

RCA
Radiolas
REG. U. S. PATENT OFFICE
Radiotrons
REG. U. S. PATENT OFFICE
and
Accessories



NOTICE

The apparatus and devices which, or the use of which, are covered by patents are sold only under certain specified license set forth in a notice attached permanently to the said apparatus and devices, or if this is impracticable on account of size, then on tags or wrappers attached to the said apparatus and devices or on the cartons containing the same. This license notice is as follows:

In connection with devices it sells, Radio Corporation of America has rights under patents having claims (a) on the devices themselves, and (b) on combinations of the devices with other devices or elements, as for example in various circuits and hook-ups.

The sale of this device carries a license under the patent claims of (a), but only for (1) talking machine uses, (2) radio amateur uses, (3) radio experimental uses, and (4) radio broadcast reception; and only where no business features are involved.

The sale does not carry a license under patent claims of (b) except only (1) for legitimate renewals and repairs in apparatus and systems already licensed for use under such patent claims on combinations, (2) for assembling by amateurs and experimenters, and not by others, with other licensed parts or devices, or with parts or devices made by themselves, but only for their own amateur and experimental radio uses where no business features are involved, and not for sale to or for use by others, and (3) for use with licensed talking machines and licensed radio broadcast receiving devices; and only where no business features are involved.



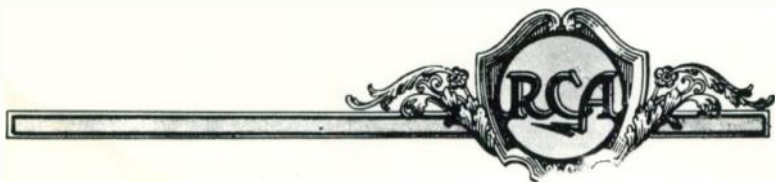
This Printing 1983
AMR Publishing Co.
P.O. Box 3194
Seattle, Washington 98114

Meeting the Responsibility of Leadership

IN conformity with its policy of introducing new radio developments when there is a commercial or practical need for technical improvement, The Radio Corporation of America makes announcements herewith which are of the utmost importance to radio broadcast listeners.

Following the conviction that broadcast transmission will be continually improved, The Radio Corporation of America has designed its Radiolas to take into account the transmitting conditions of many years hence. Both the present and the new types of Radiolas therefore have wide "acoustical" bands considerably in excess of the tonal range of the average radio transmitter, and wide enough to take care of any developments of the future.

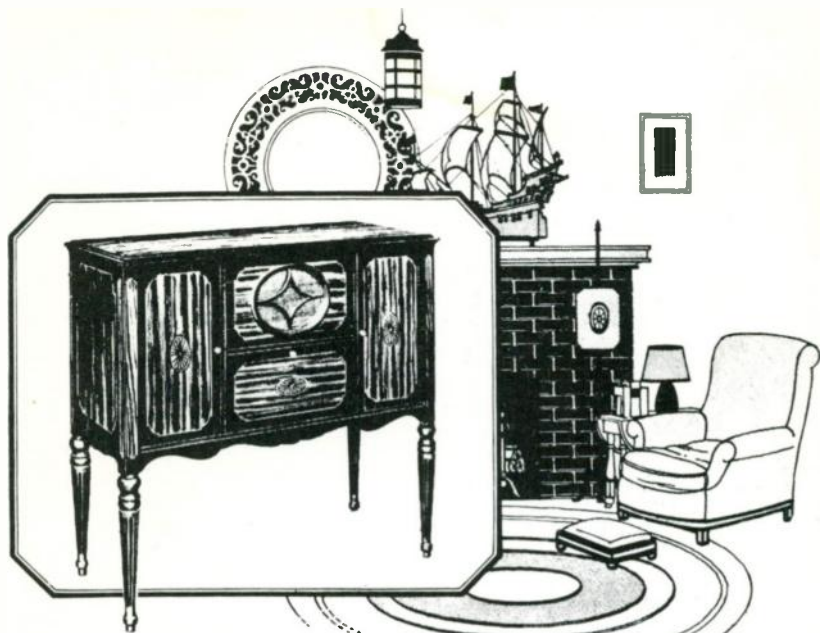
Thus, the purchaser of a Radiola is assured of continuity of performance and of having secured a broadcast receiver of permanent value, not likely to be rendered obsolete by any over-night development either in radio transmission or reception.





RCA
Radiolas
REG. U. S. PATENT OFFICE
Radiotrons
REG. U. S. PATENT OFFICE
and
Accessories





RCA-Radiola 30

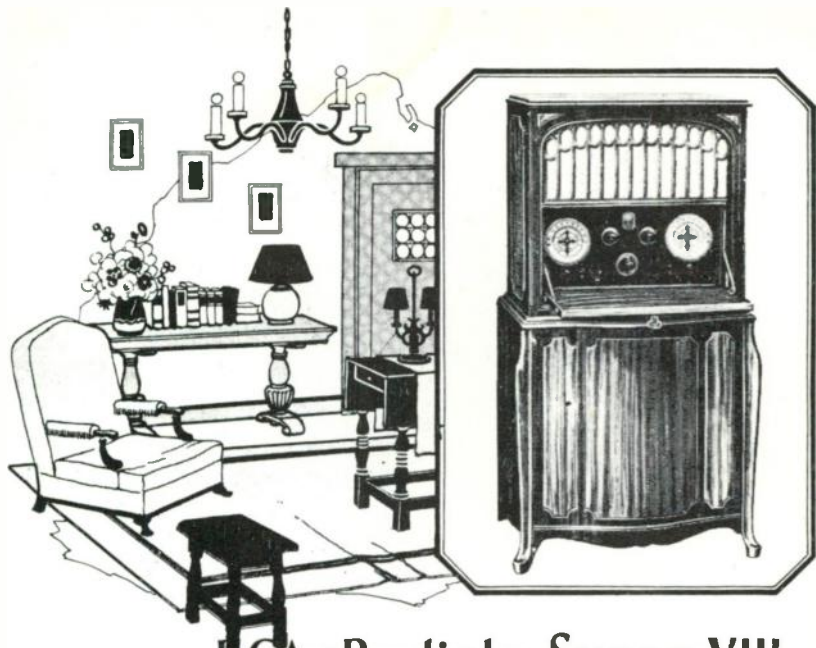
AS well as being a masterpiece of the cabinetmaker's art, Radiola 30 is a de luxe Super-Heterodyne which represents the highest development in receiving sets. Its eight-tube radio unit embraces not only the famous Super-Heterodyne circuit but also includes two tuned radio frequency circuits which greatly increase both sensitivity and selectivity.

Radiola 30 is operated entirely from 110 volt, 40-45 or 50-75 cycle, alternating house current. There are no batteries to be installed or renewed. The beautiful cabinet contains everything necessary for operation including an efficient loop antenna and one of the new power driven RCA Cone Loudspeakers.

In Radiola 30 there is also the feature of *uni-control*. The "Station selectors" take the form of two drums calibrated in kilocycles. Stations can be tuned in by operating both drums separately or as a unit for they are connected by a light friction clutch.

RADIOLA 30, complete, ready for A.C. operation as specified \$575.00

RADIO CORPORATION OF AMERICA



RCA Radiola Super-VIII

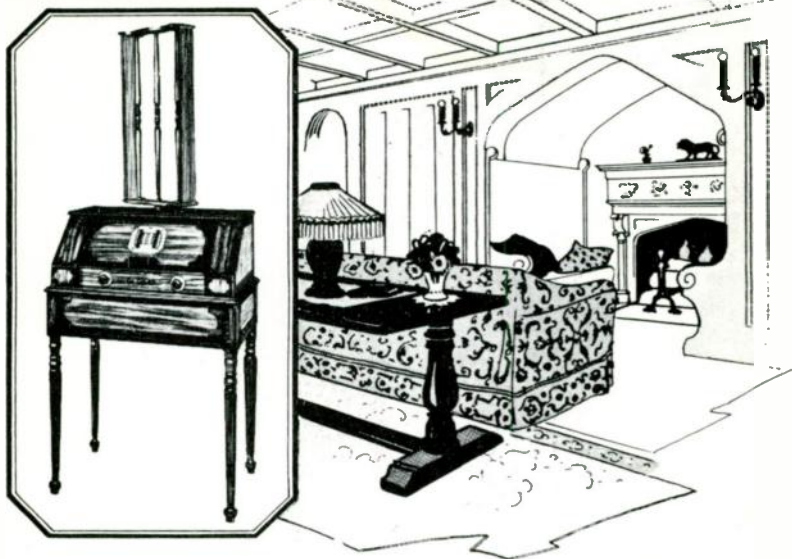
RADIOLA SUPER-VIII is a six-tube, second harmonic, RCA Super-Heterodyne, equipped with the famous Doublette RCA Loudspeaker and housed in a handsome upright cabinet. Fitted with Radiotron UX-120, the dry battery power amplifier tube, volume and quality of reproduction have been materially improved, placing it among the leaders of the completely self-contained sets.

Radiola Super-VIII is particularly adapted for areas local to broadcasting stations where an extremely high degree of selectivity is imperative and where it is often impossible to erect an antenna. An efficient loop antenna, easily rotated by a panel control knob, is built within the cabinet.

Radiola Super-VIII is dry battery operated and, like all RCA Super-Heterodynes, requires no external wiring. It is a complete, self-contained set of unusual refinement, assuring continuity of performance and stable operation.

**RADIOLA SUPER-VIII, with all Radiotrons and UR-556
adapter for Radiotron UX-120..... \$340.00**

NEW YORK · CHICAGO · SAN FRANCISCO



RCA Radiola 28

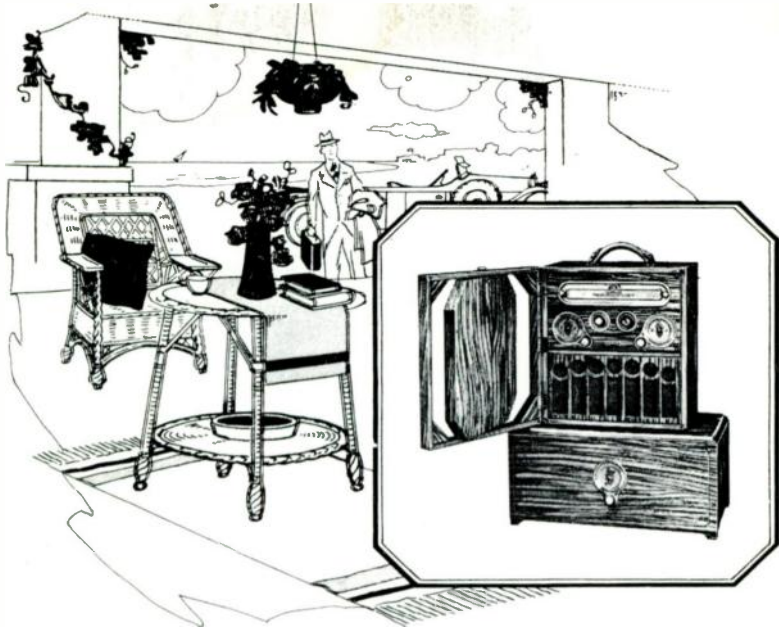
*R*ADIOLA 28 is a desk model of the new RCA eight-tube Super-Heterodyne,—the same circuit that is employed in Radiola 30.

It is equipped with the dry battery power Radiotron UX-120 which provides ample volume without distortion.

This eight-tube Radiola embraces not only the famous Super-Heterodyne circuit, but also includes two tuned radio frequency circuits ahead of the Super-Heterodyne circuit which greatly increase both sensitivity and selectivity. Radiola 28 filters out interfering signals with an efficiency never before attained and at the same time increases the range of reception. Art and engineering of today offer no advantages for attaining perfect reception which are not embodied in Radiola 28.

RADIOLA 28, with Radiotrons (less batteries and loud-speaker)	\$260.00
RADIOLA 28, with RCA Loudspeaker Model UZ-1325	278.00
RADIOLA 28, with RCA Loudspeaker Model 100	295.00
RADIOLA 28, with RCA Loudspeaker Model 102	400.00
RADIOLA 28, with RCA Loudspeaker Model 104	535.00

RADIO CORPORATION OF AMERICA



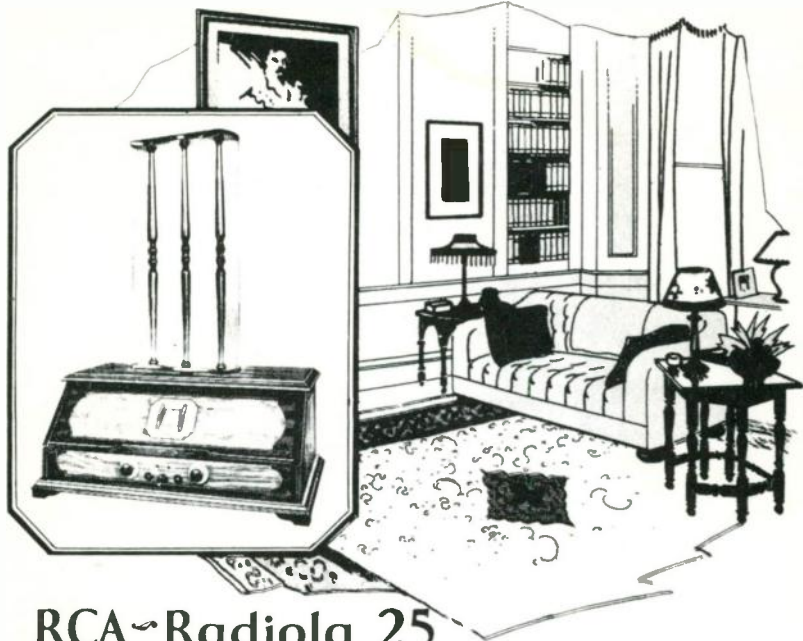
RCA~Radiola 26

RADIOLA 26, the popular portable Super-Heterodyne, meets particular requirements not met by any other type of radio receiver. It was designed for loop and outdoor antenna operation and for both portable and home use.

Radiola 26 is a complete and self-contained portable six-tube Super-Heterodyne which can be carried from place to place and will provide reception over great distances. Its weight including batteries is only 42 pounds. Inasmuch as it is a home set as well as a portable, it is always furnished with a Home Battery Box which provides space for full-sized batteries, which are more economical for home use where weight is no determining factor. For reception over unusual distances in home use, an antenna coupler is built into the Home Battery Box. This device renders the sensitive Super-Heterodyne even more sensitive and enables reception over exceptional distances.

RADIOLA 26, with Radiotrons, self-contained Loop Antenna, built-in Loudspeaker, and Home Battery Box, with Antenna Coupler, complete and self-contained (less batteries) \$225.00

NEW YORK • CHICAGO • SAN FRANCISCO



RCA Radiola 25

RADIOLA 25 is a second-harmonic, six-tube Super-Heterodyne. This circuit has already demonstrated that it meets every demand of the broadcast listener with respect to selectivity, range, tone and volume. Radiola 25 is equipped with the new Radiotron UX-120, dry battery, power amplifier, thus giving volume in excess of the average storage-battery operated receiver. The new RCA uni-control mechanism is employed in this Radiola, allowing sensitive tuning by rotating the two selector drums either as a unit or separately.

As in the case of all Radiola Super-Heterodynes, no antenna is required. The loop is mounted directly on top of the cabinet and is readily rotated to take advantage of directional effect.

RADIOLA 25, with Radiotrons (less batteries)	\$165.00
RADIOLA 25, with RCA Loudspeaker Model UZ-1525.....	185.00
RADIOLA 25, with RCA Loudspeaker Model 100.....	200.00
RADIOLA 25, with RCA Loudspeaker Model 102.....	305.00
RADIOLA 25, with RCA Loudspeaker Model 104.....	440.00

RADIO CORPORATION OF AMERICA



RCA-Radiola 20

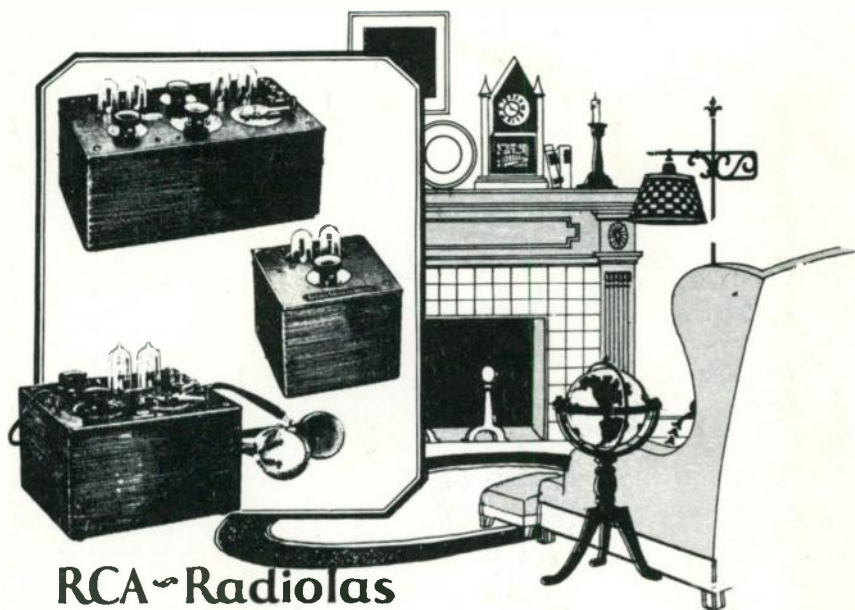
RADIOLA 20 is a five-tube, balanced, tuned radio frequency receiver with the additional feature of variable regeneration in the detector circuit. It is dry battery operated and uses four Radiotrons UX-199 and one dry battery power Radiotron UX-120.

The predominating features of this set are extreme sensitivity and greater selectivity than that obtained by the usual type of five-tube circuit. The set is adapted for use with aerials of various lengths. Radiola 20 is equipped with the uni-control method of tuning for local stations. Vernier tuning controls are provided for use in reception over more than ordinary distances.

As it is equipped with the new dry battery power Radiotron UX-120, Radiola 20 provides full, undistorted volume.

RADIOLA 20, with Radiotrons	\$115.00
RADIOLA 20, with RCA Loudspeaker Model UZ-1325	153.00
RADIOLA 20, with RCA Loudspeaker Model 100	150.00
RADIOLA 20, with RCA Loudspeaker Model 104	390.00

NEW YORK • CHICAGO • SAN FRANCISCO



RCA Radiolas III, III-A and Amplifier

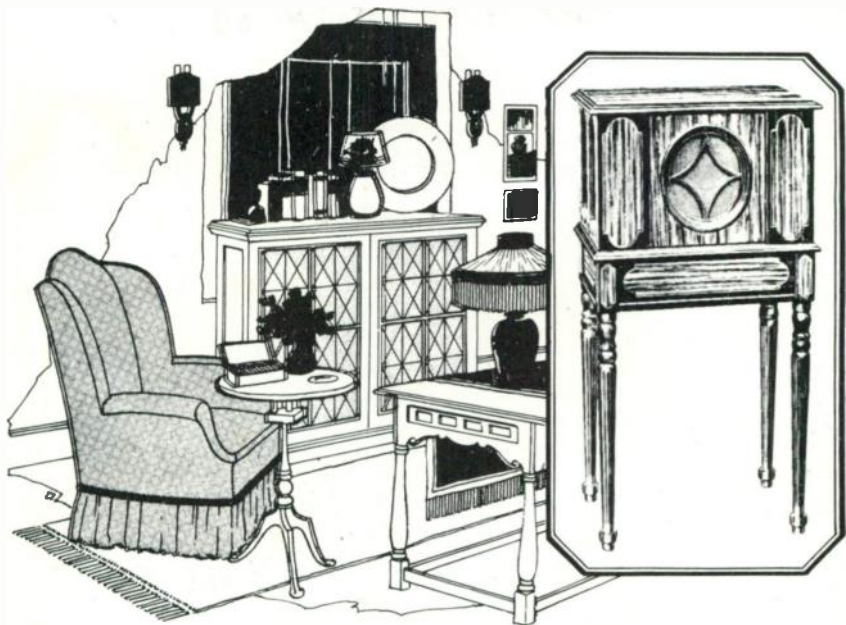
RADIOLA III is a two-tube receiver and has been aptly termed the "personal" Radiola for it is eminently adapted to one's personal and private use. It is a standard and truly practical Radiola having the very fine quality of workmanship and efficiency characteristic of RCA.

For Radiola III owners who wish to obtain loudspeaker volume from distant stations, Radiola Balanced Amplifier is provided.

Radiola III-A, which is a combination of Radiola III and Balanced Amplifier in one unit, is available for those who wish to purchase a reliable, high quality loudspeaker operating receiver, in the most economical form.

RADIOLA III-A, less accessories	\$35.00
RADIOLA III-A, with Radiotrons and headphones	49.50
RADIOLA III-A, with Radiotrons, headphones and RCA Loudspeaker Model UZ-1325	67.50
RADIOLA III, less accessories	15.00
RADIOLA III, with Radiotrons and headphones	24.50
RADIOLA BALANCED AMPLIFIER, less Radiotrons	18.00
RADIOLA BALANCED AMPLIFIER, with Radiotrons	23.00

RADIO CORPORATION OF AMERICA



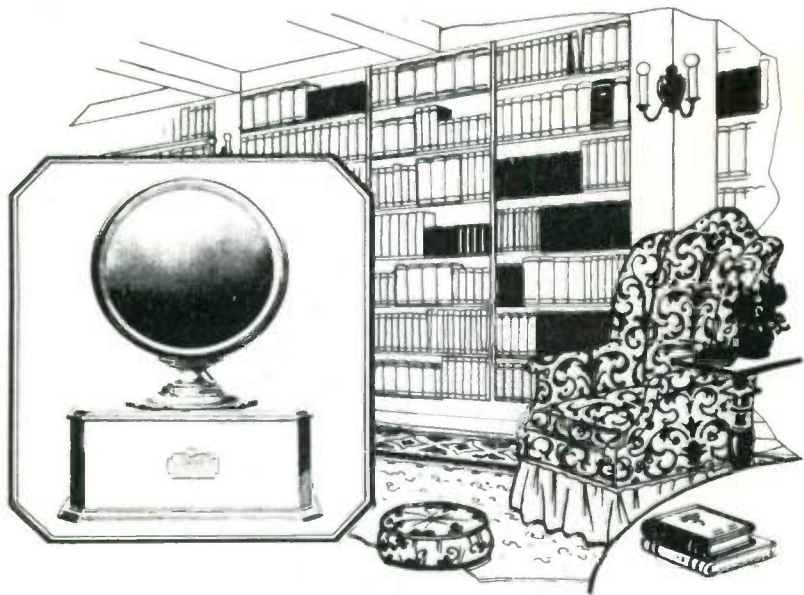
RCA~Loudspeaker 104

*A*COUSTIC perfection and Radiola Loudspeaker Model 104 go hand in hand. There is nothing even remotely like this loudspeaker for it provides distortionless reproduction at volume equal to that of an orchestra as it would be heard within the concert hall, or it may be toned down almost to a whisper. Speech is reproduced with an unimpeachable clarity.

But Model 104 is even more than a marvelous loudspeaker. It is equipped with a rectifier-power-amplifier unit which takes ordinary alternating house-current of 110 volts at 40-45 or 50-75 cycles, rectifies it, smooths it out and supplies it at an automatically regulated voltage to the power amplifier Radiotron (UX-210) of the loudspeaker. Its Rectifier can be used in conjunction with the proper "AC Package," which may be purchased separately, to energize Radiolas 25 or 28, thus doing away with all batteries—"A," "B," and "C." Without the use of the "AC Package," it can be connected to do away with "B" batteries only of any receiver.

**RCA LOUDSPEAKER MODEL 104, with all necessary
Radiotrons and Rectrons..... \$275.00**

NEW YORK • CHICAGO • SAN FRANCISCO



RCA Loudspeaker 102

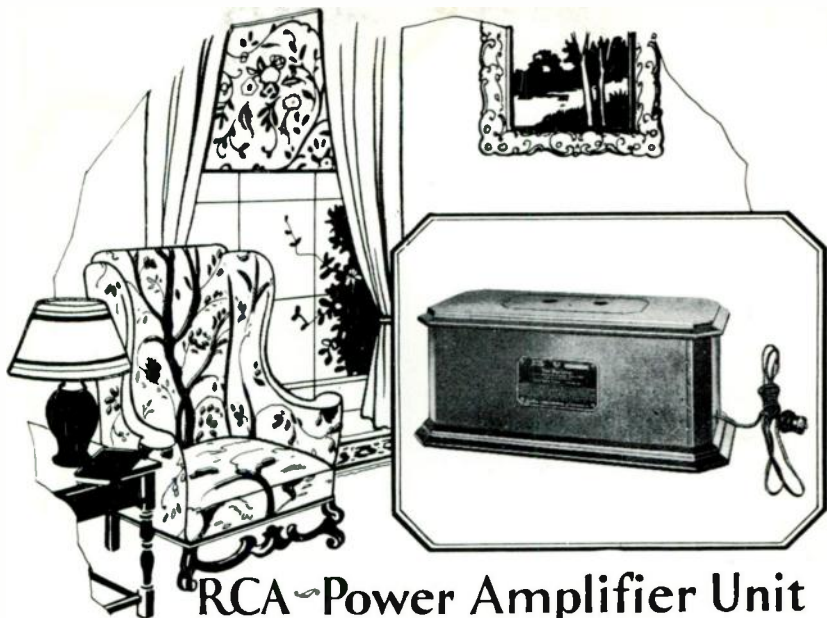
THIS is another development of the Radio Corporation of America designed for broadcast listeners who desire improved tone quality and volume from present-day types of broadcast receivers. Model 102 possesses very fine tonal qualities with exceptional volume. The maximum volume obtainable is greatly in excess of that secured from the ordinary types of loudspeakers.

Very pleasing mellowness and clarity of tone are realized in Model 102. It may be connected to the first audio stage of any Radiola or any other type of high grade broadcast receiver.

Model 102 Loudspeaker is supplied with a rectifier-power-amplifier unit, termed "RCA Power Amplifier Unit Model AP-935," which operates the super-power amplifier Radiotron UX-210 from 110 volt, 40-60 cycle, AC lighting circuits.

**RCA LOUDSPEAKER MODEL 102, with Radiotron UX-210
and Rectron UX-216-B. \$140.00**

RADIO CORPORATION OF AMERICA



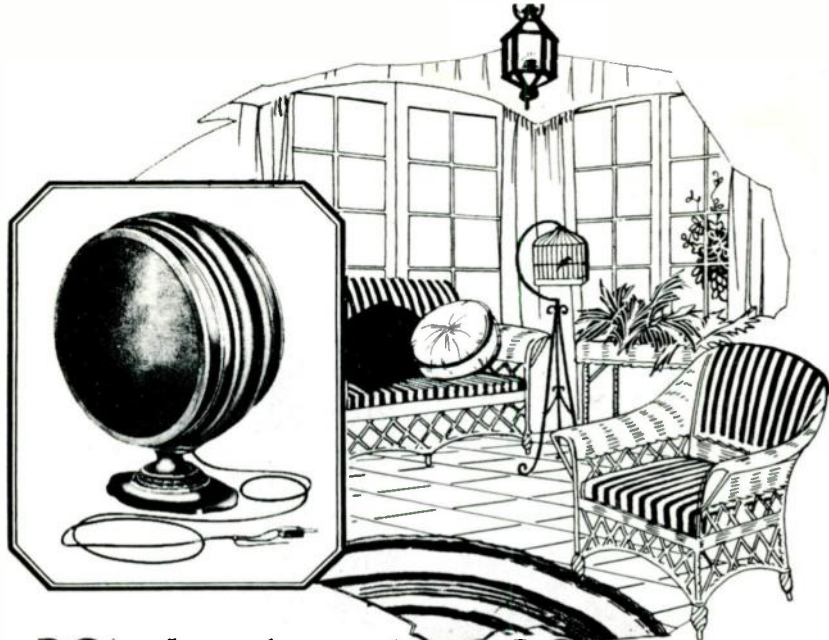
RCA Power Amplifier Unit (Uni-Rectron)

THE owner of a broadcast receiver who desires increased volume and improved loudspeaker reproduction will find the RCA Power Amplifier Unit the most highly perfected alternating current power-driven amplifier yet developed.

The RCA Power Amplifier Unit is the same rectifier-power-amplifier unit that is included in the Model 102 Loudspeaker. It may be connected to the first audio stage of any type of high grade broadcast receiver, and any type loudspeaker, to supply a stage of super-power amplification, operated from a 110 volt, 40-60 cycle alternating current source. The result is a tremendous increase in volume, and a marked improvement in tone quality. This device marks a distinct advance in the art of radio reproduction. Formerly great volume could only be obtained with an accompanying great decrease in quality. The RCA Power Amplifier Unit delivers at an exceptional volume, a quality far superior to that obtainable without it.

**RCA POWER AMPLIFIER UNIT, MODEL AP-935 with
Radiotron UX-210 and Rectron UX-216-B. \$105.00**

NEW YORK · CHICAGO · SAN FRANCISCO



RCA~Loudspeaker 100

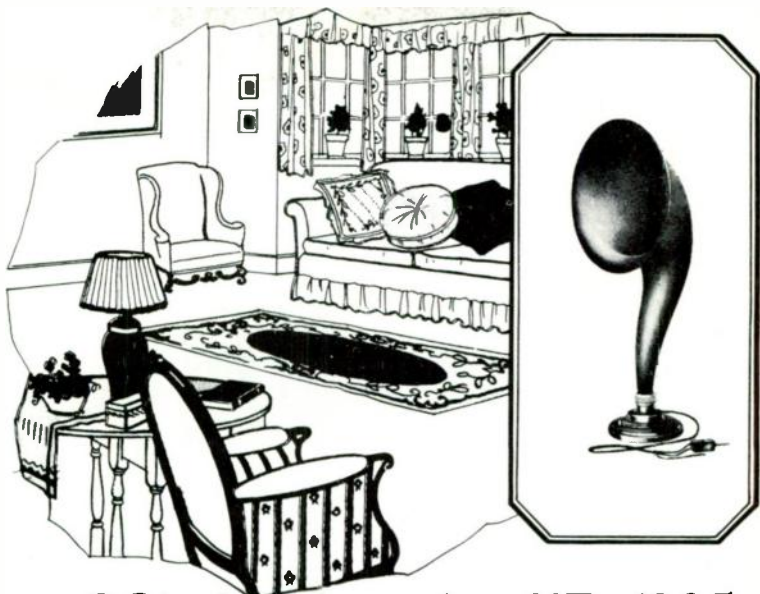
*I*N keeping with its reputation for leadership, the Radio Corporation of America has developed this radically new type of Loudspeaker for direct use with either dry battery or storage battery operated receivers.

Model 100 Cone Loudspeaker is a component part of the Model 102, and provides the same excellent tonal quality, at a slightly lower volume. Unusually high volume is obtained without distortion when the Model 100 is used with such modern radio receivers as Radiola 20, Radiola 25 and Radiola 28, or receivers of similar output. This loudspeaker reproduces as exact tones many musical frequencies which ordinarily are reproduced only as noise. These are the frequencies which are necessary to re-create voice and music with natural fullness and purity.

Model 100 Cone Loudspeaker will be appreciated by music lovers and those to whom precise reproduction of the program transmitted from the broadcast station is the prime consideration.

RCA LOUDSPEAKER MODEL 100..... \$35.00

RADIO CORPORATION OF AMERICA



RCA~Loudspeaker UZ-1325

UNIVERSALLY declared to give the most faithful reproduction among loudspeakers of the horn type, Model UZ-1325 is standard in the low priced field.

In operation the effects of its improved construction are easily distinguished. To listen to the UZ-1325 is a decided pleasure.

The range of acoustical frequencies of Model UZ-1325 is considerably greater than that of the average horn type of loudspeaker. The sturdy construction of its horn and base, its extra large and powerful magnet, and its precise electric and mechanical construction insure years of perfect service with ordinary care.

The diaphragm is rust proof and of correct weight and balance. It is protected by a screen from dirt and dust. An adjusting lever affords the listener a most simple means of adjustment. In fact, none of the characteristic RCA refinements of workmanship has been omitted.

RCA LOUDSPEAKER MODEL UZ-1325..... \$18.00

NEW YORK • CHICAGO • SAN FRANCISCO



RCA "B" Battery Eliminator (Duo-Rectron)

THIS new "B" battery eliminator has been perfected as a result of a long series of investigations of the technical requirements of a device to supply plate voltages from a 110 volt, 40-75 cycle, AC source. Taps are provided giving plate voltages of $22\frac{1}{2}$, 45, 90, and 135 volts.

As usual, RCA has gone further than merely to design a "B" battery eliminator. The marked falling off of voltage, characteristic of most devices of this kind when they are under load, has been scientifically corrected. The voltage supply to the receiver is maintained constant under variations in voltage of the AC supply line by means of the Voltage Regulating Radiotron UX-874. The user may employ one or all of the voltage outlets with the same fine results.

Through a special design of the filter system, alternating current hum has been eliminated. Thus, RCA presents a unit which can supply the necessary plate voltages of practically any existing type of radio broadcast receiver.

RCA "B" Battery Eliminator MODEL AP-937 with Radiotron UX-874 and Rectron UX-213. \$65.00

RADIO CORPORATION OF AMERICA

RCA Radiotrons

POWER-AMPLIFIERS



**Radiotron
UX-120**

The Radiotron UX-120 is a power-amplifier Radiotron for use only in the last stage of audio frequency amplification of dry-battery operated sets.

It is employed in the well-known Radiolas mentioned previously in these pages.

Owners of Radiola Super-VIII, Radiola Super-Heterodyne semi-portable and Radiolas III and III-A will find an improvement in the volume and tone quality of their receivers by the addition of this Radiotron. Your dealer can advise you of details.

Radiotron UX-120 . . . \$2.50

**Radiotron
UX-171**

The Radiotron UX-171 is a power-amplifier Radiotron for use in the last stage of audio frequency only. This Radiotron occupies a place in power output between the Radiotron UX-112 and the Radiotron UX-210.

The filament may be operated either from the storage battery or from alternating current.

The use of this Radiotron in the last stage of a storage battery receiver enables the handling of greater volume without distortion.



Radiotron UX-171 . . . \$6.00



**Radiotron
UX-112**

The Radiotron UX-112 is a storage battery operated Power Amplifier. It is particularly designed for use in the last stage of audio frequency amplification where

it will give pure quality at greater volume.

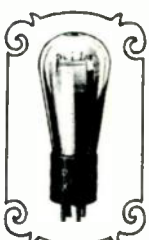
This Power Amplifier Radiotron amplifies and passes to the loudspeaker undistorted signals already brought to great intensity by the preceding Radiotrons. Only a Power Radiotron can do this.

Radiotron UX-112 . . . \$6.50

**Radiotron
UX-210**

The Radiotron UX-210 is a super-power amplifier Radiotron. It is designed for use only in the last stage of audio frequency amplification. It may be operated from an 8-volt storage battery or from properly transformed alternating current.

This is the most powerful receiving Radiotron made. It is used in the RCA Power Amplifier Unit, the Loudspeaker Models 102 and 104, and the Radiola 30.



Radiotron UX-210 . . . \$9.00

NEW YORK • CHICAGO • SAN FRANCISCO

RCA Radiotrons

DETECTORS

Radiotron UX-200-A

The Radiotron UX-200-A is a super-sensitive detector tube and is particularly sensitive on weak signals. This Radiotron uses the same filament voltage and current as the Radiotron UX-201-A and also employs the same plate voltage which the latter uses for detection.

The placing of this Radiotron in the detector socket of a storage battery set in most instances increases the volume on weak signals from distant stations to the extent of the addition of one stage of radio frequency amplification.

Radiotron UX-200-A \$5.00

Radiotron UX-200

Radiotron UX-200 is a very sensitive detector tube for the storage battery set. It is the oldest member of the Radiotron family.

Radiotron UX-200 \$2.50

DETECTOR-AMPLIFIERS

Radiotrons WD-11 and WX-12

The Radiotrons WD-11 and WX-12 are dry battery Radiotrons, designed to be used as detectors, radio frequency amplifiers or audio frequency amplifiers.

These Radiotrons are electrically identical and differ only in the mechanical construction of their bases. The WX-12 is equipped with the Standard UX Base.

The WD-11 Radiotron was the first dry-cell tube produced. It is still a very popular and widely used detector-amplifier.

Radiotrons WD-11 and WX-12 \$2.50

Radiotrons UV-199 and UX-199

These are the economical dry-cell Radiotrons, highly efficient as detectors, radio frequency amplifiers or audio frequency amplifiers.

Radiotrons UV-199 and UX-199 differ only in the mechanical construction of their bases; they are identical electrically.

Due to the extreme A battery economy, these Radiotrons are pre-eminently suited for use in portable radio receivers, as well as for the home type of receiver.

Radiotrons UV-199 and UX-199 \$2.25

Radiotron UX-201-A

The Radiotron UX-201-A is the standard, all-purpose storage battery Radiotron. It may be used as a detector, as a radio frequency amplifier and as an audio frequency amplifier.

It is equipped with the famous "XL" filament which gives both long life and "A" battery economy. Ruggedness of construction and dependability are other important features.

Radiotron UX-201-A \$2.00

RADIO CORPORATION OF AMERICA

Radiotrons and Rectrons

RECTIFIERS

Rectron UX-213

Rectron UX-213 is a full-wave rectifying tube, with "XL" filament, for use in specially designed "B" battery eliminator circuits.

This Rectron is part of the equipment of the RCA "B" Battery Eliminator.

Rectron UX-213..... \$6.00

Rectron UX-216-B

Rectron UX-216-B is a half-wave rectifying tube of a 65 milliampere capacity. It is equipped with the long-life "XL" filament and is particularly designed to give long and uninterrupted service.

One UX-216-B Rectron is used in the RCA Power Amplifier Unit.

Rectron UX-216-B..... \$7.50

SPECIAL RADIOTRONS

Radiotron UV-877

The UV-877 Radiotron is a protective tube which is placed in "B" battery circuits of radio receivers. It protects the elements of the set, and in certain cases the tubes, in the event there is a "short" in the "B" battery circuit.

Radiotron UV-877..... \$1.75

Radiotron UX-874

The Radiotron UX-874 is a voltage regulator tube used in the RCA "B" Battery Eliminator and in the Loudspeaker Model 104.

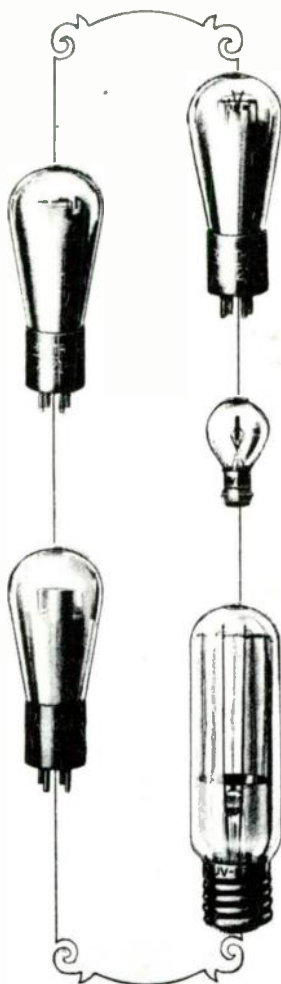
This Radiotron is designed to maintain constant the plate or "B" voltage fed to Radiotrons in the receiver.

Radiotron UX-874..... \$5.50

Radiotrons UV-876 and UV-886

The Radiotrons UV-876 and UV-886 are ballast tubes for maintaining constant current supply to Radiola 30 and RCA Loudspeaker 104, regardless of normal variations in the voltage of the house lighting circuit. For 50-75 cycle lighting circuits these models require Radiotron UV-876 and for 40-45 cycle sources they require Radiotron UV-886.

Radiotrons UV-876 and UV-886..... \$6.50

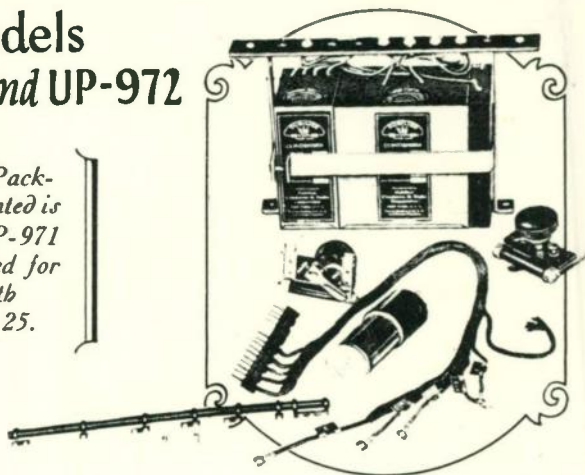


NEW YORK • CHICAGO • SAN FRANCISCO

The AC Packages

Models UP-971 and UP-972

The AC Package illustrated is Model UP-971 as supplied for use with Radiola 25.



IN order that the "A" and "C" batteries as well as the "B" batteries may be eliminated when Radiola 25 or Radiola 28 is operated with RCA Loudspeaker Model 104, the installation of one of the AC Packages is essential. The AC Packages consist of the group of accessories required to convert Radiola 25 or Radiola 28 for complete alternating current operation from the Model 104 Loudspeaker.

The AC Package Model UP-971 must be used with Radiola 25 and Model 104 Loudspeaker, while Radiola 28 and Model 104 Loudspeaker require Model UP-972. It is recommended that the user of RCA Loudspeaker 104 and Radiola 25 or 28 arrange with an RCA Authorized Dealer to install the AC Package. When the AC Package installation is made it is completely concealed from view within the Radiola, part of it occupying the space provided for batteries.

AC PACKAGE MODEL UP-971 for Radiola 25.....	\$35.00
AC PACKAGE MODEL UP-972 for Radiola 28.....	35.00

RADIO CORPORATION OF AMERICA