

# THE PULSE OF RADIO™ COMPARATIVE RATINGS GUIDE™

'89  
FALL EDITION  
SUMMER DATA

THE INTEREP  RADIO STORE

DURPETTI & ASSOCIATES

GROUP W RADIO SALES

HNWH

MAJOR MARKET RADIO

McGAVREN GUILD RADIO

TORBET RADIO

*Radio's Only Full-Service Marketing Company*

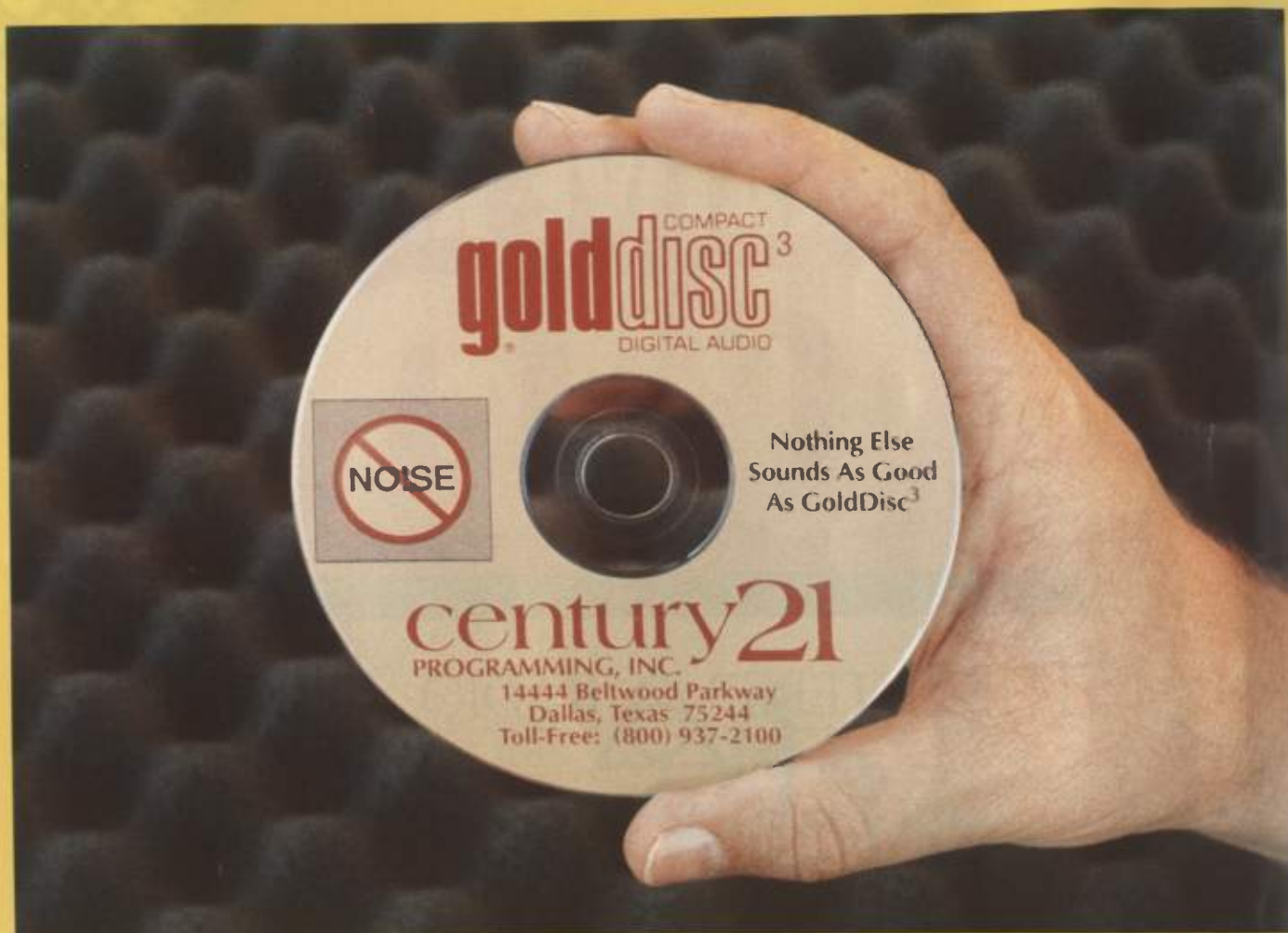
## The Interrep Radio Store Office Locations

Atlanta  
Boston  
Charlotte  
Chicago

Dallas  
Denver  
Detroit  
Houston

Los Angeles  
Minneapolis  
New York  
Philadelphia

Portland  
San Francisco  
Seattle  
St. Louis



## The Fastest Format Improvement Ever!

The clearest, cleanest classics come from **Century 21**! Call for a free demo proving that GoldDisc<sup>3</sup> Compact Discs are better than "record store" oldies!

**GoldDisc<sup>3</sup>** is **Century 21's** new and improved third edition *radio* CD oldies. You benefit from the latest research, larger libraries, no tape hiss, no surface noise, "clean" lyrics, hit "45" lengths, expanded dynamic range, superior sonics, and a 3-year replacement guarantee.

Century 21's new secret is **NoNOISE™**. It's in

our \$103-a-minute digital remastering computers that work miracles on oldies. **NoNOISE™** gets rid of hiss, hum, clicks and pops without getting rid of any music!

Call now for our free sample CD. Hear for yourself why 1,000 stations—plus most of the national program producers and satellite networks—use Century 21's Compact Discs for the *best* quality music.

**(800) 937-2100**

FAX: (214) 392-2121

**century21**  
PROGRAMMING, INC.

14444 Beltwood Parkway  
Dallas, Texas 75244-3228



# The Pulse Of Radio Comparative Ratings Guide Fall '89 Edition

Based On Summer '89 Arbitron and Birch Data

The following pages contain ***The Pulse of Radio Comparative Ratings Guide***, Fall '89 Edition, featuring Summer '89 data, an extensive effort by *The Pulse* and Strata Marketing, with the cooperation of Arbitron Ratings Co. and Birch Radio.

*The Pulse of Radio Comparative Ratings Guide* is a station-by-station comparison of the Summer '89 Arbitron and Birch 12-plus shares in the top 75 Arbitron Radio markets measured this past summer. Each graph represents Arbitron and Birch shares for the top 10 Arbitron-ranked stations. Markets are listed alphabetically.

The Guide has been produced with data provided by Strata Marketing, a Chicago-based firm serving the broadcast industry. Strata writes and markets computer software for station ratings analyses and qualitative sales presentations.

Arbitron uses a diary-keeping system, while Birch samples households by telephone interviews. Both processes involve hours of research, compilation and computation of data.

Each graph contains a chart showing the stations' shares and a percentage of difference between Arbitron and Birch.

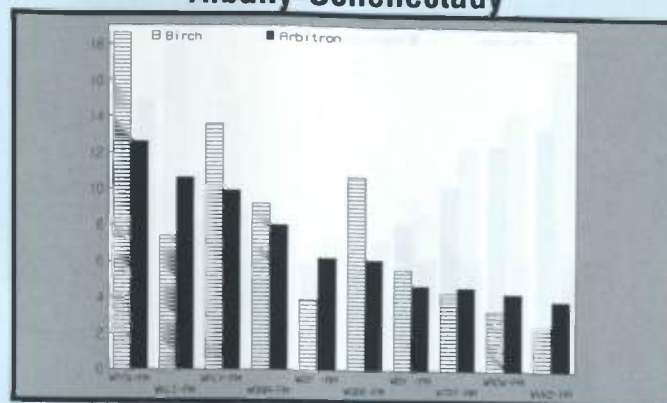
The graphs read from left to right. The first bar is the Birch share, the second is the Arbitron share. Look at the table to determine the share-per-station by ratings service, then the percent-share difference.

The graph allows station executives to compare numbers side-by-side and to compare ratings of stations in other markets with similar formats. *The Pulse of Radio Comparative Ratings Guide* is published quarterly and reflects data for markets according to the availability of ratings information.

*The Pulse* acknowledges the cooperation of Arbitron Ratings Co. and Birch Radio, and the efforts of Bruce Johnson and Roger Skolnik of Strata Marketing.

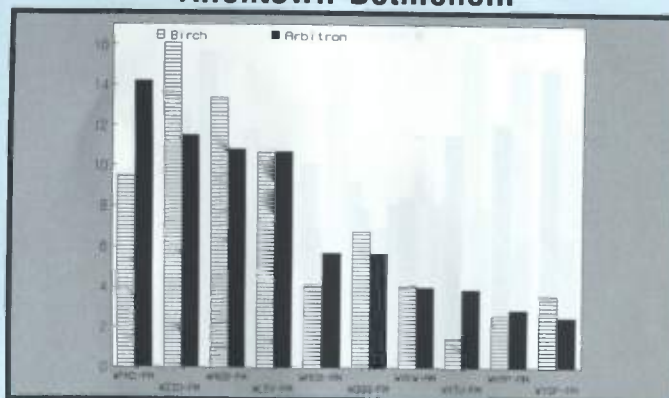
The Pulse Of Radio  
1216-D U.S. Highway 1  
North Palm Beach, FL 33408 407-625-3774

## Albany-Schenectady



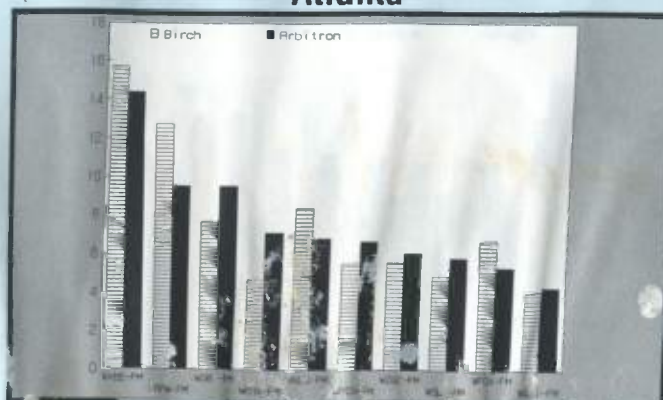
Ranked on: AqShr Su89	AqShr Bir Su89	AqShr ARB Su89	AqShr % Diff	Ranked on: AqShr Su89	AqShr Bir Su89	AqShr ARB Su89	AqShr % Diff		
1	WPYX-FM	14.6	12.6	-32.3	6	WQSK-FM	10.7	6.1	-43.0
2	WKLI-FM	7.4	10.6	43.2	7	WGY-FM	5.6	4.7	-16.1
3	WFLY-FM	13.6	9.9	-27.2	8	WTRY-AM	4.3	4.0	-7.0
4	WGNA-FM	9.2	8.0	-13.0	9	WRDQ-FM	3.3	4.3	30.3
5	WGY-AM	3.9	4.2	59.0	10	WKZ-FM	2.5	3.9	56.0

## Allentown-Bethlehem



Ranked on: AqShr Su89	AqShr Bir Su89	AqShr ARB Su89	AqShr % Diff	Ranked on: AqShr Su89	AqShr Bir Su89	AqShr ARB Su89	AqShr % Diff		
1	WFME-FM	9.5	14.2	49.5	5	WQDQ-FM	6.5	5.7	-16.2
2	WZZD-FM	16.1	11.5	-28.6	7	WXXW-AM	4.1	4.6	12.4
3	WABF-FM	13.4	10.8	-19.4	8	WKUP-FM	1.5	2.9	160.0
4	WLEV-FM	10.7	10.7	0.0	9	WKAP-AM	2.6	2.9	11.5
5	WABF-AM	4.1	5.7	39.0	10	WYSP-FM	3.6	2.5	-30.6

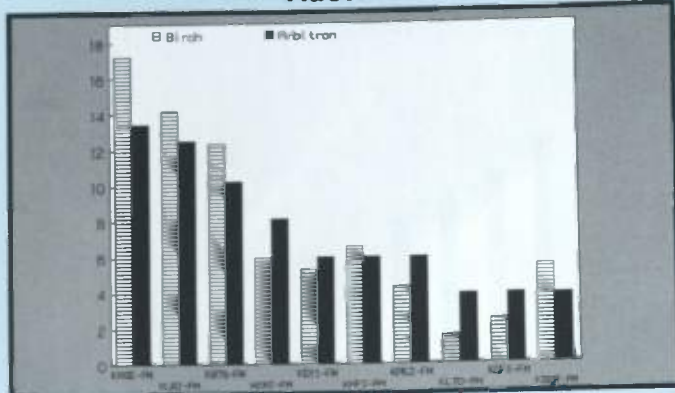
## Atlanta



Ranked on:	AqShr B <sup>1</sup> Su89	AqShr B <sup>2</sup> Su89	AqShr B <sup>3</sup> Su89	Ranked on:	AqShr B <sup>1</sup> Su89	AqShr B <sup>2</sup> Su89	AqShr B <sup>3</sup> Su89		
1	WEEZ-FM	15.7	14.4	-8.3	6	WPCJ-FM	5.5	5.6	20.0
2	WAPN-FM	12.9	9.6	-25.6	7	WPCJ-FM	5.6	6.1	8.9
3	WABF-FM	11.1	11.1	0.0	8	WPCJ-FM	4.9	5.6	18.4
4	WPCJ-FM	8.3	8.3	0.0	9	WPCJ-FM	4.7	5.1	20.9
5	WPCJ-FM	4.4	4.4	0.0	10	WPCJ-FM	4.1	4.3	4.9

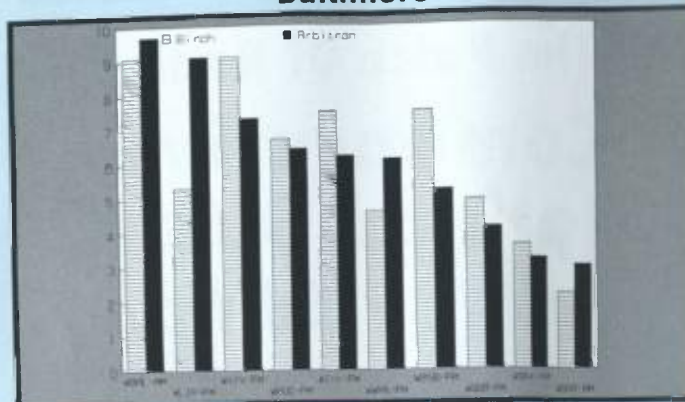


## Austin



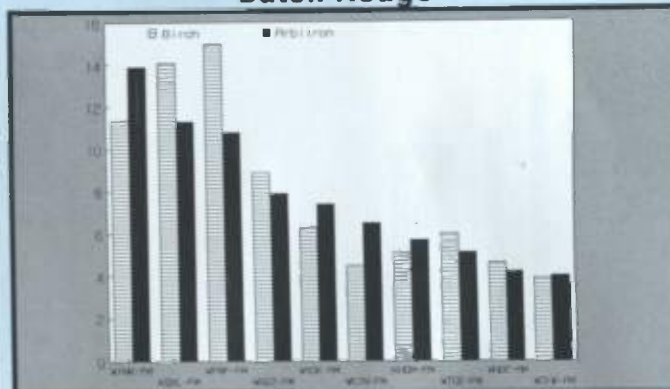
Ranked on:	AqShr	AqShr	AqShr	Ranked on:	AqShr	AqShr	AqShr
AqShr Su89	Bir Su89	ARB Su89	% Diff	AqShr Su89	Bir Su89	ARB Su89	% Diff
1 KASE-FM	17.2	13.4	-22.0	5T KHFI-FM	6.6	6.0	-9.1
2 KLBJ-FM	14.2	12.5	-12.0	5T KPEZ-FM	4.3	6.0	39.5
3 KBTZ-FM	12.3	10.2	-17.1	8T KLTD-FM	1.6	3.9	143.8
4 KXMX-FM	6.0	8.1	35.0	8T KDFX-FM	2.5	3.9	56.0
5T KXYI-FM	5.3	6.0	13.2	10T KGSF-FM	5.5	3.8	-30.9

## Baltimore



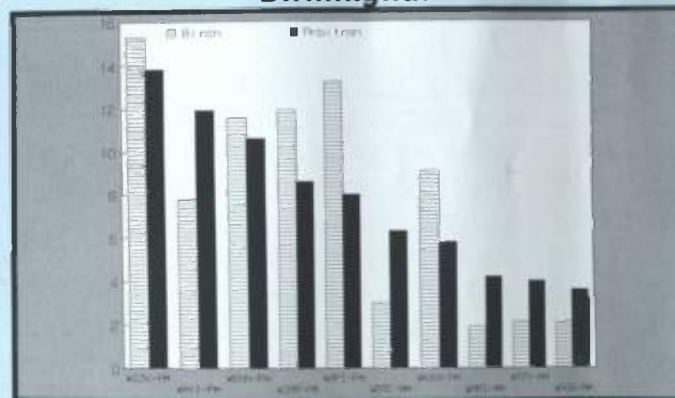
Ranked on:	AqShr	AqShr	AqShr	Ranked on:	AqShr	AqShr	AqShr
AqShr Su89	Bir Su89	ARB Su89	% Diff	AqShr Su89	Bir Su89	ARB Su89	% Diff
1 WBAL-AM	9.1	9.7	6.6	6 WMMX-FM	4.6	6.1	32.6
2 WLIF-FM	5.3	9.1	71.7	7 WBSB-FM	7.5	5.2	-30.7
3 WKYV-FM	9.1	7.3	-19.8	8 WOSB-FM	4.9	4.1	-16.3
4 WPOC-FM	6.7	6.4	-4.5	9 WGRX-FM	3.5	3.2	-11.1
5 WYYY-FM	7.5	6.2	-17.3	10 WBGH-AM	2.2	3.0	36.4

## Baton Rouge



Ranked on:	AqShr	AqShr	AqShr	Ranked on:	AqShr	AqShr	AqShr
AqShr Su89	Bir Su89	ARB Su89	% Diff	AqShr Su89	Bir Su89	ARB Su89	% Diff
1 WYWK-FM	11.4	13.9	21.9	6 WKJN-FM	4.5	6.5	44.4
2 KOLX-FM	14.1	11.3	-19.9	7 KHDM-FM	5.1	5.7	11.8
3 WFMF-FM	15.0	10.8	-28.0	8 WTGE-FM	6.0	5.1	-15.0
4 WGGZ-FM	8.9	7.9	-11.2	9 WNDG-FM	4.6	4.2	-8.7
5 WKCK-AM	8.3	7.4	-17.5	10 WCKW-FM	3.9	4.0	2.6

## Birmingham



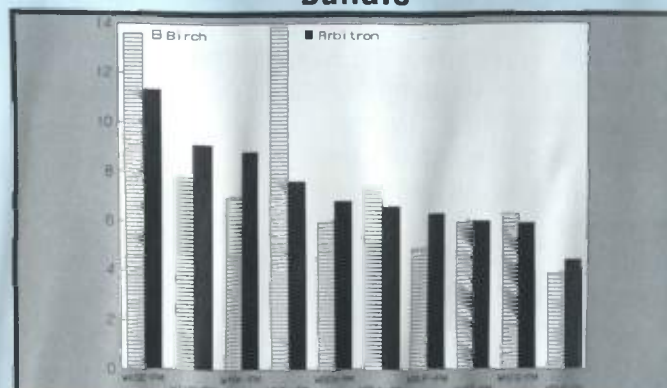
Ranked on:	AqShr	AqShr	AqShr	Ranked on:	AqShr	AqShr	AqShr
AqShr Su89	Bir Su89	ARB Su89	% Diff	AqShr Su89	Bir Su89	ARB Su89	% Diff
1 WZZK-FM	15.3	13.8	-9.8	6 WRCR-AM	3.9	6.3	110.0
2 WMLJ-FM	7.8	7.9	52.6	7 WROX-FM	9.1	5.8	-36.3
3 WENH-FM	11.6	10.6	-8.6	8 WATV-AM	1.5	4.2	121.1
4 WZLH-FM	11.9	8.8	-27.7	9 WATV-AM	2.1	4.0	90.5
5 WAPI-FM	13.2	8.0	-39.4	10 WAGG-AM	2.1	3.6	71.4

## Boston



Ranked on:	AqShr	AqShr	AqShr	Ranked on:	AqShr	AqShr	AqShr
AqShr Su89	Bir Su89	ARB Su89	% Diff	AqShr Su89	Bir Su89	ARB Su89	% Diff
1 WKSZ-FM	9.1	8.6	-12.1	6 WJZB-FM	3.4	5.2	52.9
2 WRKO-AM	5.5	6.6	13.8	7 WODS-FM	5.0	4.9	-4.0
3 WZLX-FM	5.5	5.8	16.4	8 WSNH-FM	3.5	4.6	27.6
4 WRCH-FM	6.4	5.5	-14.1	9 WNDX-FM	3.3	4.5	26.4
5 WBSZ-AM	6.4	5.4	-15.6	10 WRCH-AM	4.7	4.4	-6.4

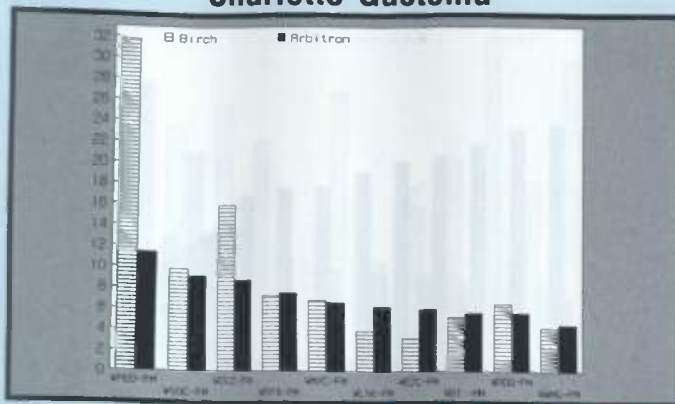
## Buffalo



Ranked on:	AqShr	AqShr	AqShr	Ranked on:	AqShr	AqShr	AqShr
AqShr Su89	Bir Su89	ARB Su89	% Diff	AqShr Su89	Bir Su89	ARB Su89	% Diff
1 WSKE-FM	13.5	11.3	-16.3	6 WBLX-FM	7.3	6.8	-6.8
2 WJYE-FM	9.1	15.7	71.4	7 WBUF-FM	4.9	8.3	28.6
3 WYRK-FM	7.0	8.6	22.9	8 WYTF-FM	6.0	6.0	0.0
4 WUHF-FM	12.9	7.6	-41.9	9 WMLL-FM	6.3	5.9	-6.3
5 WBEH-AM	6.0	6.1	1.7	10 WHDH-FM	3.9	4.4	12.8

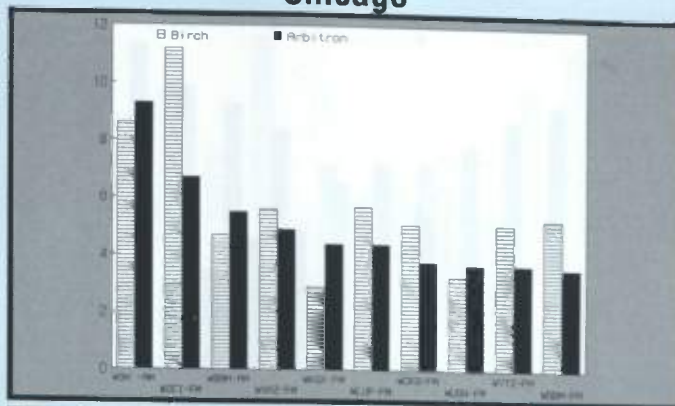


## Charlotte-Gastonia



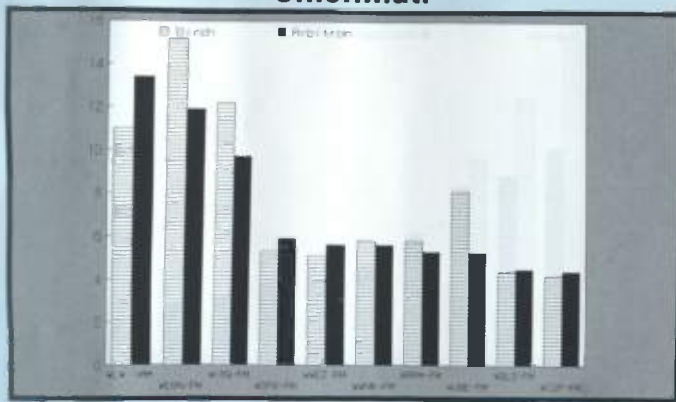
Ranked on: AqShr Su89		AqShr Bir Su89	AqShr ARB Su89	AqShr % Diff	Ranked on: AqShr Su89		AqShr Bir Su89	AqShr ARB Su89	AqShr % Diff
1	WPEG-FM	11.8	11.4	-3.4	6	WLYN-FM	3.9	62	59.0
2	WSOC-FM	9.8	9.1	-7.1	7	WEZO-FM	3.2	60	87.5
3	WKCF-FM	15.9	8.7	-45.3	8	WBT-AM	5.2	55	7.7
4	WRFX-FM	7.2	7.5	4.2	9	WRDQ-FM	5.5	56	-13.8
5	WMGQ-FM	6.8	6.6	-2.9	10	WMMG-FM	4.2	43	7.1

## Chicago



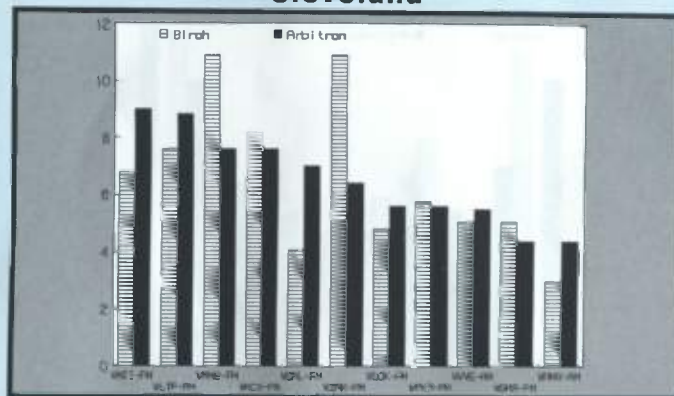
Ranked on: AqShr Su89	AqShr Bir Su89	AqShr ARB Su89	AqShr % Diff	Ranked on: AqShr Su89	AqShr Bir Su89	AqShr ARB Su89	AqShr % Diff
1 WGN-AM	8.6	9.0	8.1	57 WLUP-FM	5.7	4.4	-22.8
2 WGCI-FM	11.2	6.7	-40.2	7 WCKG-FM	5.1	3.8	-25.6
3 WBBM-AM	4.7	5.5	17.0	8T WUSN-FM	3.3	3.7	12.1
4 WVAZ-FM	5.8	4.9	-12.5	9T WYZZ-FM	5.1	3.7	-27.5
57 WQDX-FM	2.9	4.4	51.7	10 WBBM-FM	5.3	3.6	-32.1

## Cincinnati



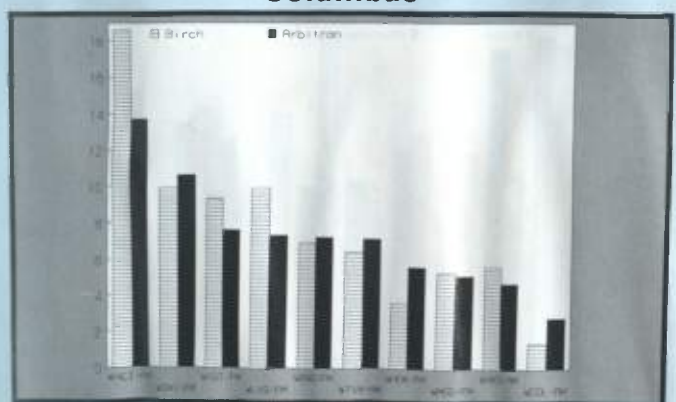
Ranked on: AqShr Su89	AqShr Bir Su89	AqShr ARB Su89	AqShr % Diff	Ranked on: AqShr Su89	AqShr Bir Su89	AqShr ARB Su89	AqShr % Diff		
1	WLW-AM	11.0	13.4	21.8	5	WNNK-FM	5.8	5.6	-3.4
2	WEFN-FM	15.2	11.9	-21.7	7	WIRM-FM	5.8	5.3	-8.6
3	WKRG-FM	12.2	9.7	-20.5	7	WUBE-FM	8.1	5.3	-34.6
4	WDRB-FM	5.3	5.9	11.3	9	WBLZ-FM	4.4	4.5	2.3
5	WNCX-FM	5.1	5.6	9.8	10	WLZF-FM	4.2	4.4	4.8

## Cleveland



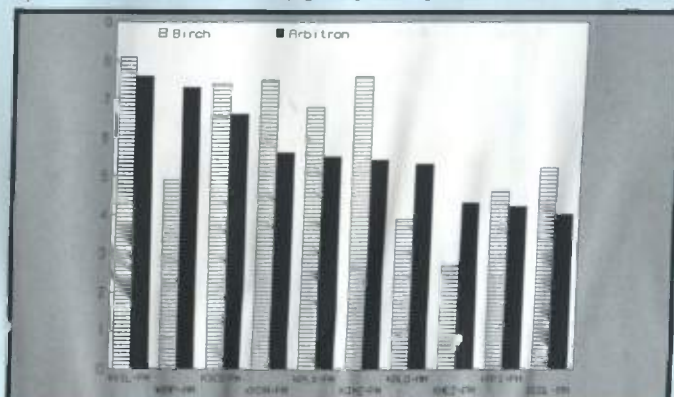
Ranked on: AqShr Su89	AqShr Bir Su89	AqShr ARB Su89	AqShr % Diff	Ranked on: AqShr Su89	AqShr Bir Su89	AqShr ARB Su89	AqShr % Diff
1 WJW-FM	6.8	9.0	32.4	6 WZAK-FM	10.9	6.4	-41.3
2 WLTY-FM	7.6	8.8	15.6	7 WQOK-FM	4.9	5.6	16.7
3 WNNK-FM	10.9	7.6	-30.3	7 WYPR-FM	5.8	5.8	-0.4
4 WNCX-FM	8.2	7.8	-7.3	9 WWWE-AM	5.1	5.3	7.0
5 WQAL-FM	4.1	7.0	70.7	10 WGAH-FM	5.1	4.4	-13.7
				10 WYAM-AM	3.0	4.4	46.7

## Columbus



Ranked on: AqShr Su89	AqShr Bir Su89	AqShr ARB Su89	AqShr % Diff	Ranked on: AqShr Su89	AqShr Bir Su89	AqShr ARB Su89	AqShr % Diff		
1	WNCX-FM	18.6	13.7	26.3	6	WTVN-AM	4.4	7.1	10.9
2	WDRB-FM	9.9	10.6	7.1	7	WQOK-FM	3.8	5.6	55.6
3	WQOK-FM	9.3	7.6	-18.3	8	WMMG-FM	5.0	5.1	-2.8
4	WVGT-FM	10.9	7.1	-35.3	9	WYZZ-AM	5.8	4.7	-16.1
5	WDRB-FM	5.9	7.2	20.3	10	WYZZ-AM	5.8	2.8	-100.0

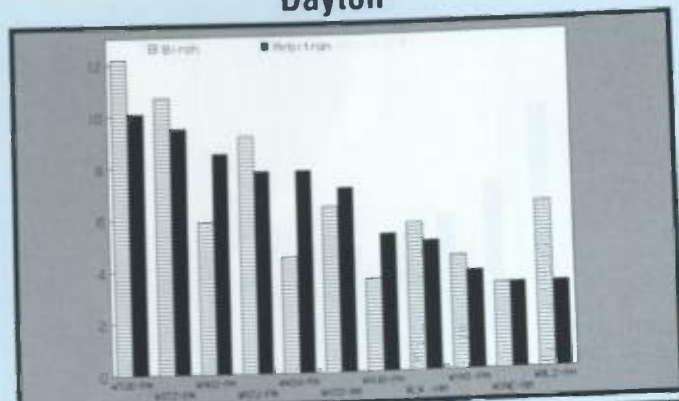
## Dallas-Ft. Worth



Ranked on: AqShr Su89	AqShr Bir Su89	AqShr ARB Su89	AqShr % Diff	Ranked on: AqShr Su89	AqShr Bir Su89	AqShr ARB Su89	AqShr % Diff	
1	KVIL-FM	8.1	7.8	-3.7	6	KJLW-FM	7.6	5.4
2	WBAP-AM	4.9	7.3	49.0	7	KRLD-AM	3.0	5.3
3	KSCS-FM	7.4	6.8	-8.1	8	KMEZ-FM	2.7	4.3
4	KKDA-FM	7.5	5.6	-25.3	9	KHYI-FM	4.6	4.7
5	KPLX-FM	6.8	5.5	-19.1	10	KEGL-FM	5.7	4.0

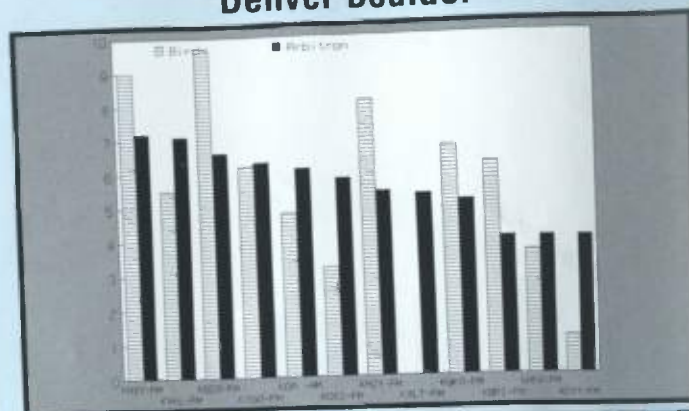


## Dayton



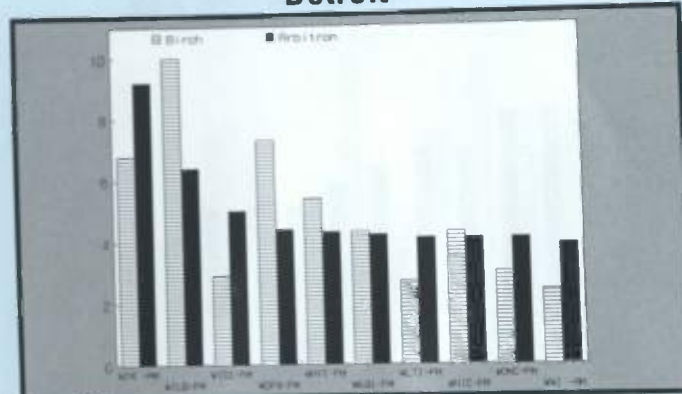
Ranked on: AqShr Su89	AqShr Bir Su89	AqShr ARB Su89	AqShr % Diff	Ranked on: AqShr Su89	AqShr Bir Su89	AqShr ARB Su89	AqShr % Diff	
				6	WHIO-AM	6.4	7.1	10.9
1	WTUE-FM	12.2	16.1	7	WUJD-FM	3.6	5.3	47.2
2	WGTE-FM	10.7	9.5	8	WLW-AM	5.7	5.0	-12.1
3	WHIO-FM	5.9	6.5	9	WYMU-FM	4.4	3.8	-13.6
47	WAZU-FM	0.2	7.8	107	WORE-AM	3.3	3.3	0.0
47	WWSN-FM	4.5	7.8	107	WOLZ-FM	6.4	3.3	-48.4

## Denver-Boulder



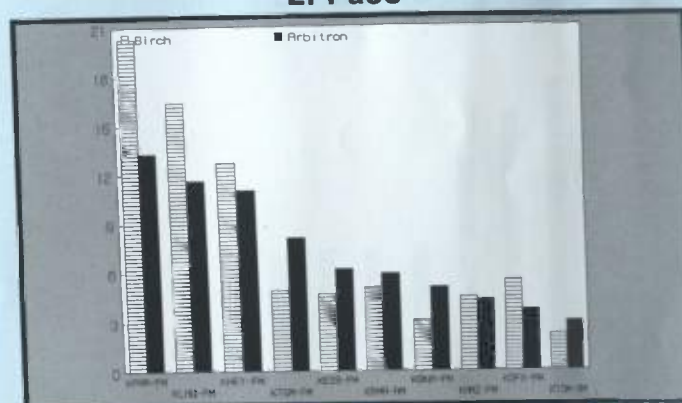
Ranked on: AqShr Su89	AqShr Bir Su89	AqShr ARB Su89	AqShr % Diff	Ranked on: AqShr Su89	AqShr Bir Su89	AqShr ARB Su89	AqShr % Diff
1 KKXY-FM	9.0	7.2	-20.0	7 KAZY-FM	8.1	5.4	-33.3
2 KXKL-FM	5.5	7.1	29.1	8 KXLT-FM	6.0	3.3	-45.0
3 KBCC-FM	9.7	8.6	-12.0	9 KQKS-FM	6.7	5.1	-23.9
4 KYGO-FM	6.2	6.3	1.6	10T KBPI-FM	6.2	4.0	-35.5
5 KDA-AM	4.8	6.1	27.1	10T KNFX-FM	3.5	4.0	11.7
6 KDSH-FM	3.2	5.8	81.3	10T KSYF-FM	1.1	4.0	263.6

## Detroit



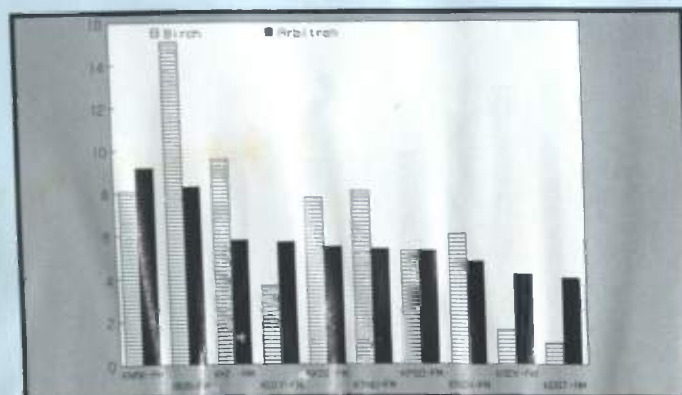
Ranked on: AqShr Su89				Ranked on: AqShr Su89			
	AqShr Btr Su89	AqShr ARB Su89	AqShr % Diff		AqShr Btr Su89	AqShr ARB Su89	AqShr % Diff
1	WJH-FM	6.8	35.3	6	WKQ-FM	4.3	-2.3
2	WJLB-FM	10.0	-36.0	7	WLTH-FM	2.7	51.9
3	WKQI-FM	2.9	72.4	7	WNCV-FM	4.9	-4.7
4	WQFS-FM	7.3	-39.7	7	WDMC-FM	3.0	36.7
5	WYFF-FM	5.4	-20.4	10	WVJL-AM	2.4	52.5

## El Paso



Ranked on: AqShr Su89	AqShr BIR Su89	AqShr ARB Su89	AqShr % Diff	Ranked on: AqShr Su89	AqShr BIR Su89	AqShr ARB Su88	AqShr % Diff
1 KPR-FM	20.3	13.3	-34.3	6 KAMA-AM	5.1	5.9	15.7
2 KLAQ-FM	16.4	11.6	-29.3	7 KBNA-FM	3.1	5.1	64.5
3 KHEY-FM	12.7	11.0	-13.4	8 KAME-FM	4.5	4.3	-4.4
4 KTSN-FM	4.9	8.1	65.3	9 KDFX-FM	5.3	3.7	-32.7
5 KEZB-FM	4.7	6.2	31.9	10 KTSN-FM	2.2	3.0	36.4

## Fresno



	Ranked on: AqShr Su89	AqShr 2tr Su89	AqShr ARB Su89	AqShr % Diff	Ranked on: AqShr Su89	AqShr 2tr Su89	AqShr ARB Su89	AqShr % Diff
1	KYAN-PA	8	92	16	6	KYAN-PA	5.1	33.3
2	BOB	10	83	0	7	KESH-FM	5.3	0.0
3	KAMJ	9	88	8	8	KRCH-FM	4.8	21.3
4	KH	3	77	1	9	KMEX-AM	4.3	162.5
5	?	7	85	10	10	KZT-AM	4.0	300.0

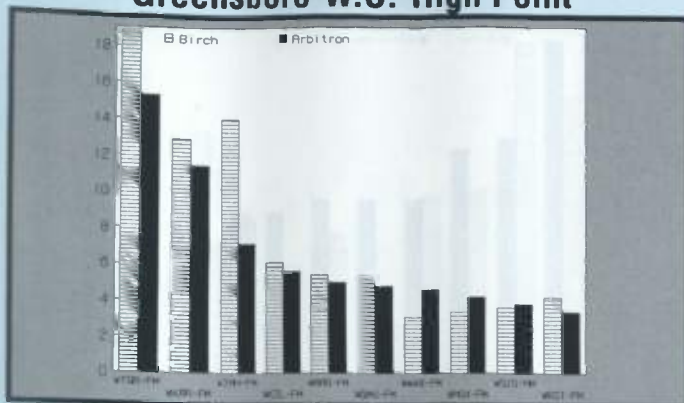
## Grand Rapids



Ranked on:		AqShr	AqShr	AqShr	Ranked on:		AqShr	AqShr	AqShr
AqShr Su89		Bir Su89	ARB Su89	% DIF	AqShr Su89		Bir Su89	ARB Su89	% DIF
1	WGND-FM	10.3	10.6	2.9	6	WLAV-FM	10.6	5.8	-45.3
2	WOOD-FM	8.2	10.2	64.5	7	WKI (I-FM)	8.1	5.6	-30.9
3	WJHT-FM	8.0	7.8	14.7	77	WSDX-FM	5.6	5.6	0.0
4	WQDZ-FM	7.4	7.0	5.4	9	WOOD-AM	7.6	5.8	-23.6
5	WJFM-FM	7.3	6.1	23.0	10	WMUS-FM	3.7	4.2	13.5

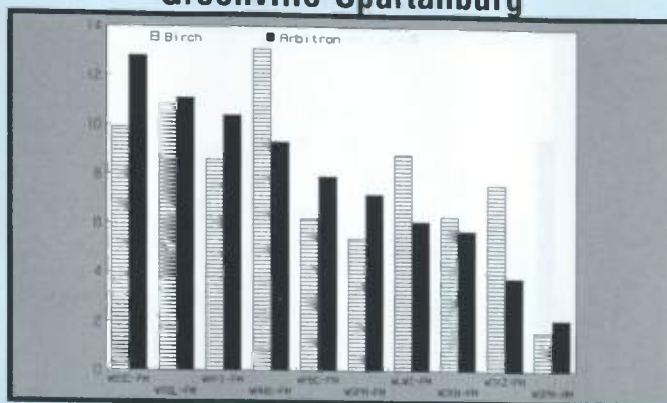


## Greensboro-W.S.-High Point



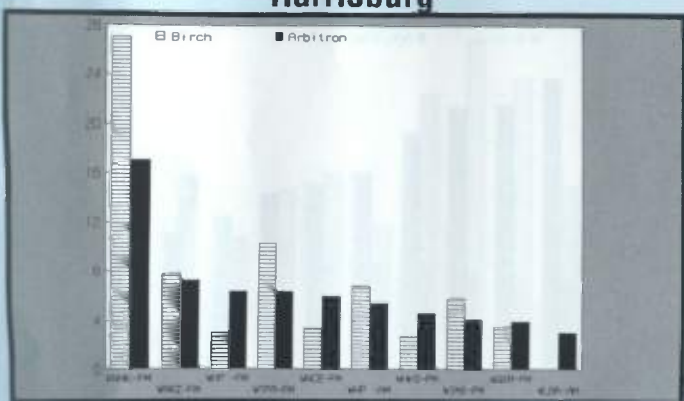
Ranked on:	AqShr	AqShr	AqShr	Ranked on:	AqShr	AqShr	AqShr
AqShr Su89	Bir Su89	ARB Su89	% Diff	AqShr Su89	Bir Su89	ARB Su89	% Diff
1	WTOR-FM	15.5	15.5	6	WOMG-FM	5.4	4.8
2	WKRR-FM	12.5	11.5	7	WWAB-FM	3.1	4.5
3	WJMH-FM	14.0	11.0	8	WAGX-FM	3.4	4.2
4	WKZL-FM	6.1	5.6	9	WSJB-FM	3.5	3.8
5	WMAG-FM	5.4	5.4	10	WKSJ-FM	4.2	3.4

## Greenville-Spartanburg



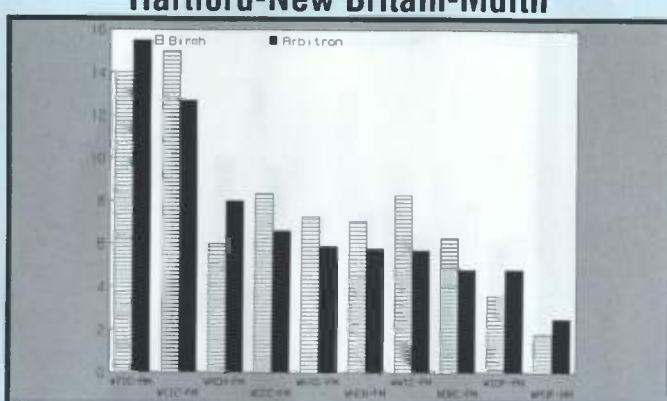
Ranked on:	AqShr	AqShr	AqShr	Ranked on:	AqShr	AqShr	AqShr
AqShr Su89	Bir Su89	ARB Su89	% Diff	AqShr Su89	Bir Su89	ARB Su89	% Diff
1	WESC-FM	9.3	12.8	6	WSPA-FM	5.4	7.2
2	WSSL-FM	10.9	11.1	7	WLWZ-FM	8.8	6.1
3	WMYI-FM	8.6	10.4	8	WCKN-FM	6.3	5.7
4	WANS-FM	13.1	9.3	9	WCKZ-FM	7.6	3.8
5	WFBC-FM	6.2	7.9	10	WSPA-AM	1.6	2.1

## Harrisburg



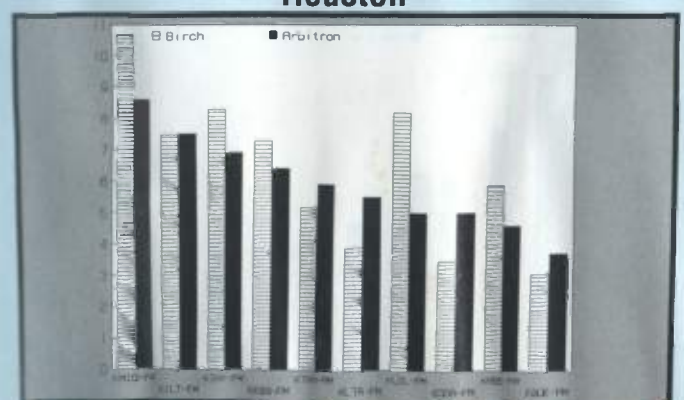
Ranked on:	AqShr	AqShr	AqShr	Ranked on:	AqShr	AqShr	AqShr
AqShr Su89	Bir Su89	ARB Su89	% Diff	AqShr Su89	Bir Su89	ARB Su89	% Diff
1	WHP-FM	27.1	17.0	6	WHP-AM	8.8	5.4
2	WPKZ-FM	7.8	7.2	7	WPKS-FM	2.7	4.6
3	WHP-AM	3.0	6.3	8	WHP-AM	5.3	4.1
4	WHP-FM	10.3	6.3	9	WQXA-FM	3.5	3.3
5	WHCE-FM	3.4	6.0	10	WLBR-AM	0.0	3.0

## Hartford-New Britain-Mdln



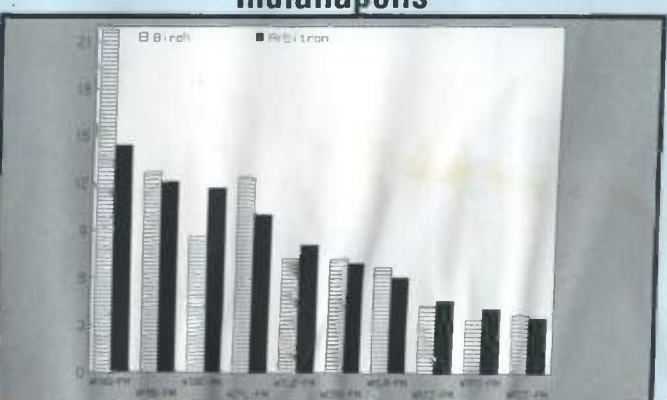
Ranked on:	AqShr	AqShr	AqShr	Ranked on:	AqShr	AqShr	AqShr
AqShr Su89	Bir Su89	ARB Su89	% Diff	AqShr Su89	Bir Su89	ARB Su89	% Diff
1	WTIC-AM	14.0	15.5	6	WHCH-FM	7.1	5.8
2	WTIC-FM	15.0	12.7	7	WVYZ-FM	8.3	5.7
3	WHCH-FM	6.0	8.0	8	WDHC-FM	6.3	4.8
4	WCCC-FM	8.4	8.6	9	WVCF-FM	3.6	4.8
5	WKSS-FM	7.3	5.9	10	WPOR-AM	1.8	2.5

## Houston



Ranked on:	AqShr	AqShr	AqShr	Ranked on:	AqShr	AqShr	AqShr
AqShr Su89	Bir Su89	ARB Su89	% Diff	AqShr Su89	Bir Su89	ARB Su89	% Diff
1	KLTH-FM	10.7	8.6	6	KLTH-FM	3.8	5.5
2	KLTH-FM	7.5	7.5	7	KLTH-FM	3.2	5.8
3	KLTH-FM	6.9	6.9	8	KLTH-FM	3.5	5.8
4	KLTH-FM	6.4	5.9	9	KLTH-FM	3.5	5.8
5	KLTH-FM	5.9	13.5	10	KLTH-FM	3.5	5.8

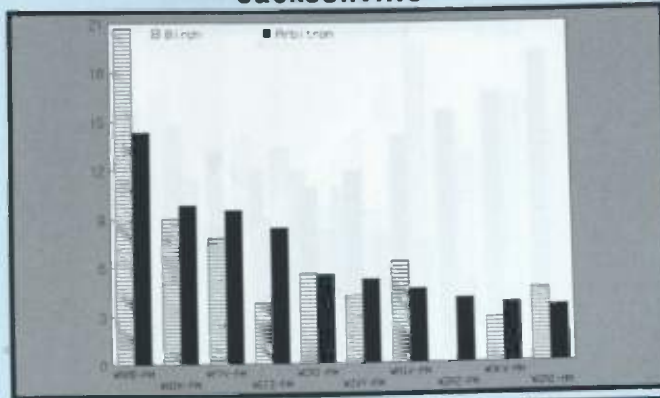
## Indianapolis



Ranked on:	AqShr	AqShr	AqShr	Ranked on:	AqShr	AqShr	AqShr
AqShr Su89	Bir Su89	ARB Su89	% Diff	AqShr Su89	Bir Su89	ARB Su89	% Diff
1	WFBO-FM	21.8	14.4	6	WFMS-FM	7.2	6.7
2	WFMS-FM	12.7	12.1	7	WBIC-AM	6.7	6.7
3	WBIC-AM	8.6	11.7	8	WZPL-FM	4.2	4.2
4	WZPL-FM	12.4	10.0	9	WZPL-FM	3.4	3.4
5	WTCL-FM	7.3	8.1	10	WZPL-FM	3.7	3.7

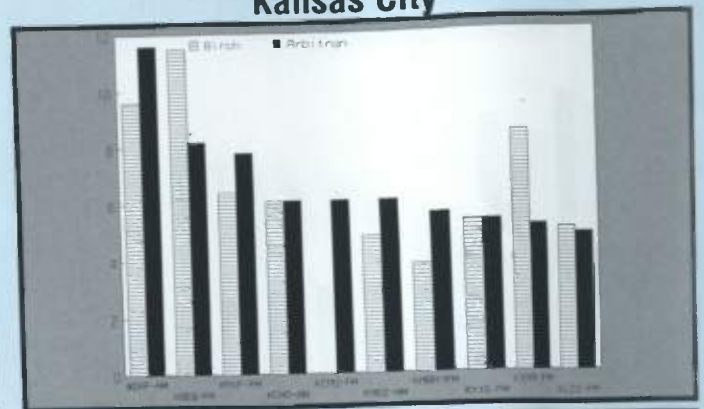


## Jacksonville



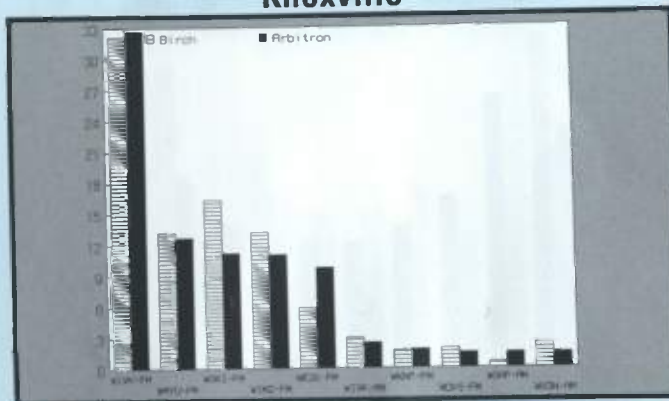
Ranked on: AqShr Su89	AqShr Bir Su89	AqShr ARB Su89	AqShr % Diff	Ranked on: AqShr Su89	AqShr Bir Su89	AqShr ARB Su89	AqShr % Diff
1. WAFB-FM	20.7	14.3	-6.4	6. WYVY-FM	4.2	5.2	1.0
2. WQKX-FM	9.0	9.6	0.6	7. WAFB-FM	6.3	4.6	-1.7
3. WYVY-FM	7.8	9.5	1.7	8. WZAZ-FM	0.0	4.0	4.0
4. WEJZ-FM	3.8	0.4	-4.8	9. WQKX-FM	2.8	3.7	0.9
5. WCRJ-FM	5.6	5.5	-0.1	10. WZAZ-FM	4.5	3.5	-1.1

## Kansas City



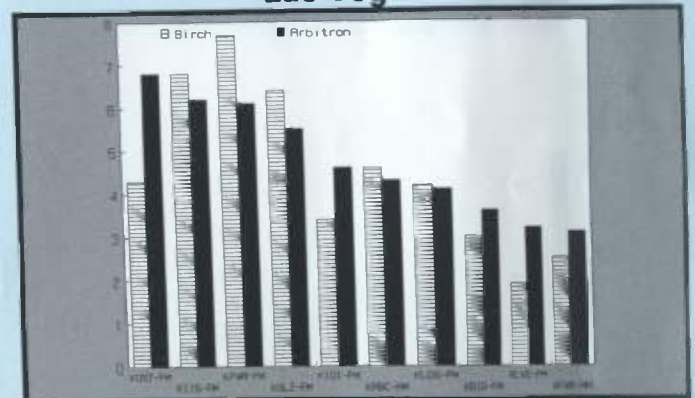
Ranked on: AqShr Su89	AqShr Bir Su89	AqShr ARB Su89	AqShr % Diff	Ranked on: AqShr Su89	AqShr Bir Su89	AqShr ARB Su89	AqShr % Diff
1. WDAF-AM	9.6	11.6	20.8	41. KMBZ-AM	4.8	6.1	27.1
2. KREQ-FM	11.5	8.2	-29.7	7. KMBZ-FM	3.8	5.8	47.4
3. KFAF-FM	6.4	7.8	21.9	8. KYYZ-FM	5.3	5.3	0.0
41. KCMO-AM	6.1	6.1	0.0	9. KOKR-FM	8.4	5.1	-39.3
41. KCMO-FM	0.0	6.1	100.0	10. KLSI-FM	5.0	4.9	-1.0

## Knoxville



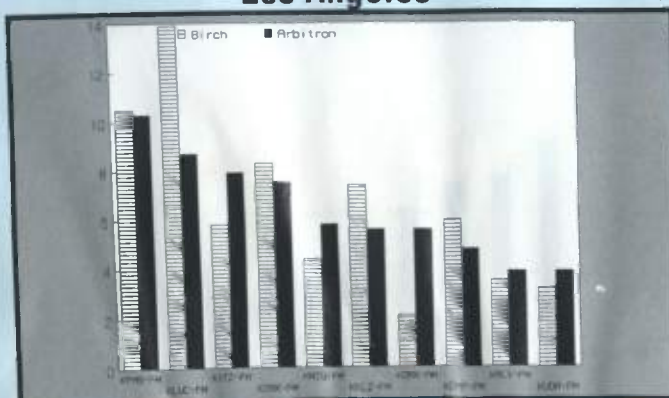
Ranked on: AqShr Su89	AqShr Bir Su89	AqShr ARB Su89	AqShr % Diff	Ranked on: AqShr Su89	AqShr Bir Su89	AqShr ARB Su89	AqShr % Diff
1. WYVY-FM	32.2	32.7	1.6	5. WYVY-AM	2.9	2.5	-13.8
2. WMYU-FM	13.2	12.7	-3.8	7. WKNE-FM	1.7	1.8	5.9
3. WQKX-FM	16.3	11.2	-31.3	81. WKKS-FM	1.9	1.5	-21.1
4. WMAZ-FM	13.2	11.0	-16.7	81. WQAP-AM	0.6	1.5	150.0
5. WEZK-FM	5.9	9.7	64.4	81. WKDN-AM	2.4	1.5	-37.5

## Las Vegas



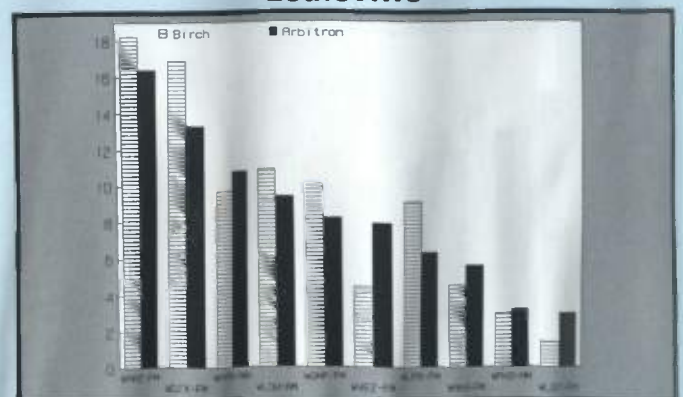
Ranked on: AqShr Su89	AqShr Bir Su89	AqShr ARB Su89	AqShr % Diff	Ranked on: AqShr Su89	AqShr Bir Su89	AqShr ARB Su89	AqShr % Diff
1. KNS-FM	10.5	10.3	-1.9	61. KKLZ-FM	7.4	5.6	-24.3
2. KLUC-FM	13.9	8.7	-37.4	61. KORK-AM	2.1	5.6	166.7
3. KXTZ-FM	5.8	7.9	36.2	8. KOMP-FM	6.0	4.8	-20.0
4. KMYK-FM	8.3	7.5	-9.6	91. KRLV-FM	3.5	3.9	11.4
5. KMQZ-FM	4.4	5.8	31.8	91. KJDA-FM	3.2	3.9	21.9

## Los Angeles



Ranked on: AqShr Su89	AqShr Bir Su89	AqShr ARB Su89	AqShr % Diff	Ranked on: AqShr Su89	AqShr Bir Su89	AqShr ARB Su89	AqShr % Diff
1. KOST-FM	4.3	5.8	58.1	6. KABC-AM	4.8	4.3	-6.5
2. KHS-FM	6.8	6.2	-8.0	7. KLOS-FM	4.2	4.1	-2.4
3. KPWR-FM	7.7	6.1	-20.8	8. KRIG-FM	3.0	3.6	20.0
4. KOLZ-FM	6.1	5.5	-14.1	9. KLUZ-FM	1.9	3.2	68.4
5. KJOL-FM	3.4	4.6	35.3	10. KPWR-AM	4.3	4.3	0.0

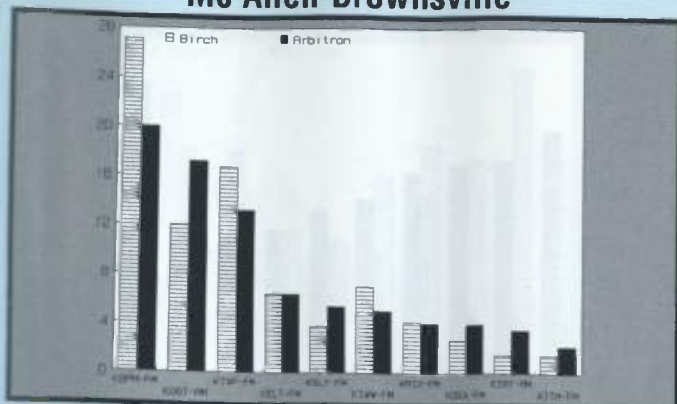
## Louisville



Ranked on: AqShr Su89	AqShr Bir Su89	AqShr ARB Su89	AqShr % Diff	Ranked on: AqShr Su89	AqShr Bir Su89	AqShr ARB Su89	AqShr % Diff
1. WAMZ-FM	18.2	16.4	-9.9	6. WVEZ-FM	4.4	7.9	79.5
2. WDJX-FM	16.9	13.3	-21.3	7. WRS-FM	9.1	6.3	-30.8
3. WHAS-AM	9.7	10.8	11.3	8. WRKA-FM	4.5	5.6	24.4
4. WLOU-FM	10.6	9.4	-13.3	9. WAGV-FM	3.0	3.2	6.7
5. WQMF-FM	10.1	8.2	-18.8	10. WLSY-FM	1.4	3.0	114.3

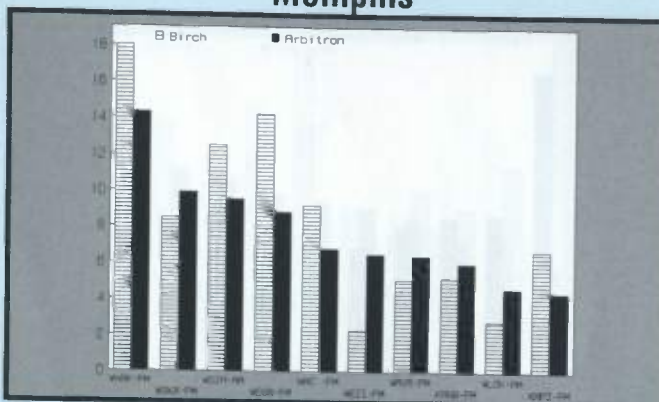


## Mc Allen-Brownsville



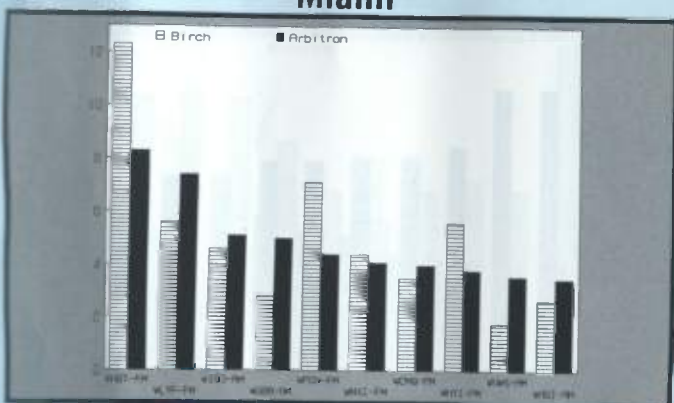
Ranked on: AqShr Su89	AqShr Bir Su89	AqShr ARB Su89	AqShr % Diff	Ranked on: AqShr Su89	AqShr Bir Su89	AqShr ARB Su89	AqShr % Diff
1 KQFM-FM	27.1	20.0	-26.2	6 KQVW-FM	7.0	5.1	-27.1
2 KQST-FM	12.9	17.2	43.8	7 KQDX-FM	4.2	4.1	-2.4
3 KQUL-FM	16.7	13.2	-21.0	8 KQST-FM	2.7	4.0	48.1
4 KQTL-FM	6.4	6.4	0.0	9 KQRT-FM	1.5	3.5	133.3
5 KQVW-FM	3.8	5.4	42.1	10 KQTH-FM	1.5	2.2	46.7

## Memphis



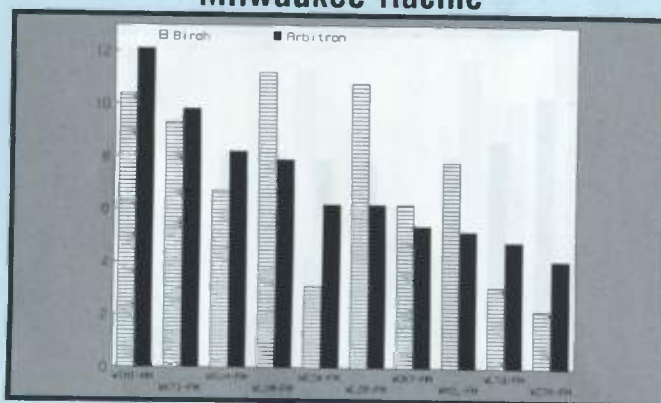
Ranked on: AqShr Su89	AqShr Bir Su89	AqShr ARB Su89	AqShr % Diff	Ranked on: AqShr Su89	AqShr Bir Su89	AqShr ARB Su89	AqShr % Diff
1 WWSB-FM	18.0	14.3	-20.8	6 WWSB-FM	2.3	6.5	182.6
2 WWSB-FM	8.5	9.9	16.5	7 WWSB-FM	5.1	6.4	25.3
3 WWSB-FM	12.5	9.5	-24.0	8 WWSB-FM	5.2	6.0	15.4
4 WWSB-FM	14.2	8.8	-38.0	9 WWSB-FM	2.8	4.6	64.3
5 WWSB-FM	9.2	6.8	-26.1	10 WWSB-FM	6.7	4.4	-34.3

## Miami



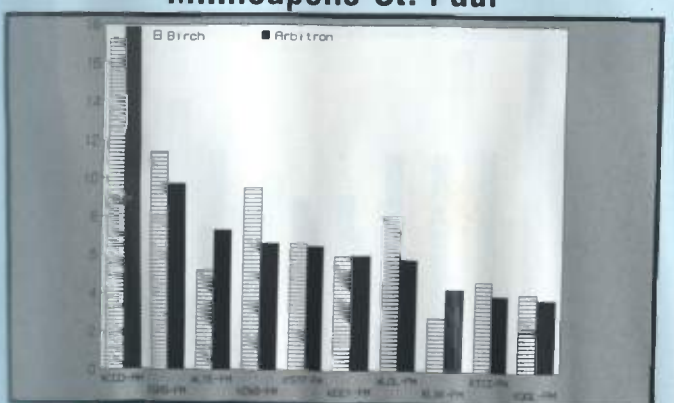
Ranked on: AqShr Su89	AqShr Bir Su89	AqShr ARB Su89	AqShr % Diff	Ranked on: AqShr Su89	AqShr Bir Su89	AqShr ARB Su89	AqShr % Diff
1 WWSB-FM	12.3	8.3	-32.5	6 WWSB-FM	4.4	4.1	-6.8
2 WWSB-FM	5.8	7.4	32.1	7 WWSB-FM	3.5	4.0	14.3
3 WWSB-FM	4.6	5.1	10.9	8 WWSB-FM	5.6	3.8	-32.1
4 WWSB-FM	2.8	5.0	78.6	9 WWSB-FM	1.8	3.0	100.0
5 WWSB-FM	7.1	4.4	-36.0	10 WWSB-FM	2.7	3.5	29.6

## Milwaukee-Racine



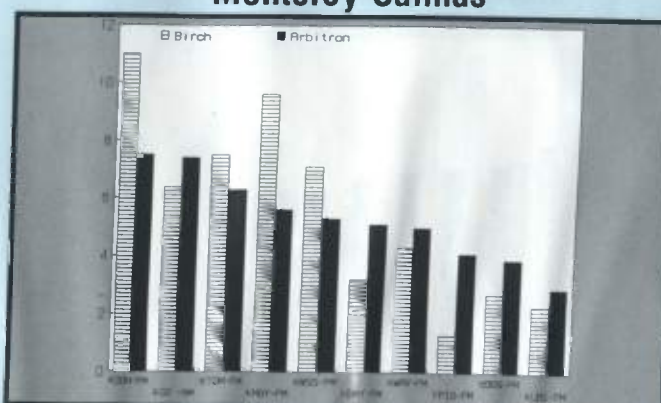
Ranked on: AqShr Su89	AqShr Bir Su89	AqShr ARB Su89	AqShr % Diff	Ranked on: AqShr Su89	AqShr Bir Su89	AqShr ARB Su89	AqShr % Diff
1 WWSB-FM	10.4	12.1	16.3	5 WWSB-FM	10.8	6.2	-42.6
2 WWSB-FM	8.3	8.8	5.4	7 WWSB-FM	6.2	5.4	-12.8
3 WWSB-FM	6.7	8.2	22.4	8 WWSB-FM	7.8	5.2	-33.3
4 WWSB-FM	11.2	7.9	-29.5	9 WWSB-FM	3.1	4.6	54.8
5 WWSB-FM	3.1	6.2	100.0	10 WWSB-FM	2.2	4.1	86.4

## Minneapolis-St. Paul



Ranked on: AqShr Su89	AqShr Bir Su89	AqShr ARB Su89	AqShr % Diff	Ranked on: AqShr Su89	AqShr Bir Su89	AqShr ARB Su89	AqShr % Diff
1 WWSB-FM	17.3	17.9	3.5	9 WWSB-FM	6.0	6.0	0.0
2 WWSB-FM	11.4	8.7	-14.9	7 WWSB-FM	8.0	5.8	-27.5
3 WWSB-FM	5.2	7.3	40.4	8 WWSB-FM	2.8	4.3	53.6
4 WWSB-FM	6.8	6.8	0.0	9 WWSB-FM	4.7	4.0	-14.9
5 WWSB-FM	6.8	6.5	-1.3	10 WWSB-FM	4.1	3.8	-7.3

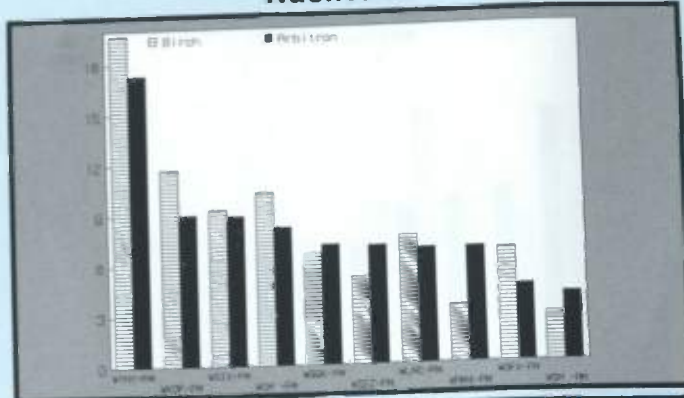
## Monterey-Salinas



Ranked on: AqShr Su89	AqShr Bir Su89	AqShr ARB Su89	AqShr % Diff	Ranked on: AqShr Su89	AqShr Bir Su89	AqShr ARB Su89	AqShr % Diff
1 WWSB-FM	11.0	7.5	-31.8	6 WWSB-FM	3.2	5.1	59.4
2 WWSB-FM	6.4	7.4	15.6	7 WWSB-FM	4.3	5.0	16.3
3 WWSB-FM	7.5	8.0	6.7	8 WWSB-FM	1.5	4.1	215.4
4 WWSB-FM	8.6	5.6	-34.7	9 WWSB-FM	2.7	3.9	44.4
5 WWSB-FM	7.1	5.3	-25.4	10 WWSB-FM	2.3	2.9	26.1

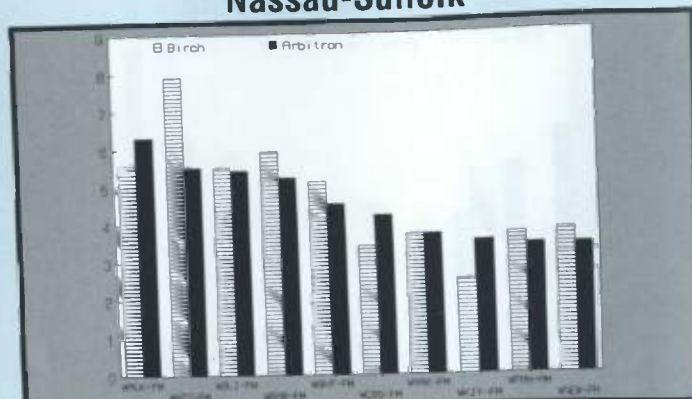


## Nashville



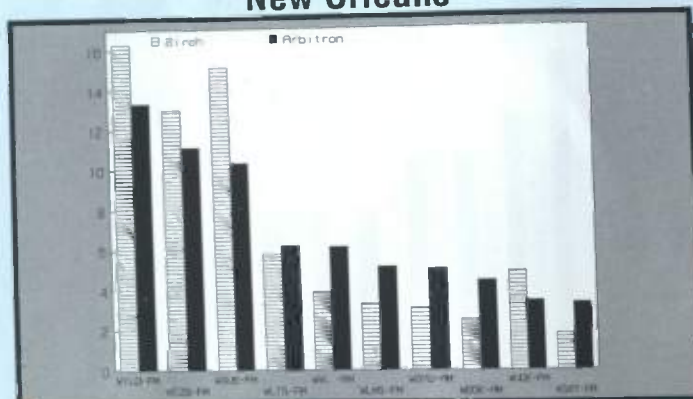
Ranked on: AqShr Su89	AqShr Bir Su89	AqShr ARB Su89	AqShr % Diff	Ranked on: AqShr Su89	AqShr Bir Su89	AqShr ARB Su89	AqShr % Diff
1 WYHY-FM	19.7	17.3	-2.4	6 WZLZ-FM	5.2	7.0	1.8
2 WQDE-FM	11.7	9.0	-2.7	7 WLAG-FM	7.6	6.6	-0.8
3 WSM-FM	9.3	8.9	-0.4	7 WRMX-FM	3.4	6.8	3.4
4 WSM-FM	10.3	8.2	-2.1	9 WGFY-FM	6.7	4.5	-2.2
5 WQOK-FM	6.6	7.1	0.5	10 WSM-AM	2.9	4.0	1.1

## Nassau-Suffolk



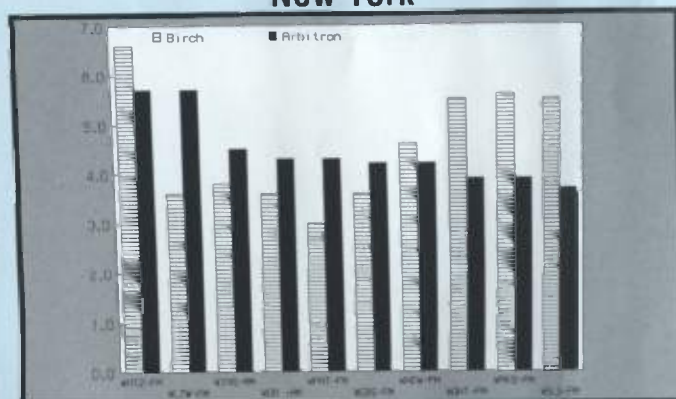
Ranked on: AqShr Su89	AqShr Bir Su89	AqShr ARB Su89	AqShr % Diff	Ranked on: AqShr Su89	AqShr Bir Su89	AqShr ARB Su89	AqShr % Diff
1 WALK-FM	5.6	6.3	12.5	6 WBS-FM	3.4	4.2	23.5
2 WHTZ-FM	7.9	5.5	-30.4	7 WYRK-FM	3.7	3.7	0.0
3 WBLI-FM	5.5	5.4	-1.8	8 WKY-FM	2.5	3.5	40.0
4 WBS-FM	5.0	5.2	11.9	9 WYAN-FM	3.7	3.4	-8.1
5 WQHT-FM	5.1	4.5	-11.8	10 WNEU-FM	3.8	3.4	-10.5

## New Orleans



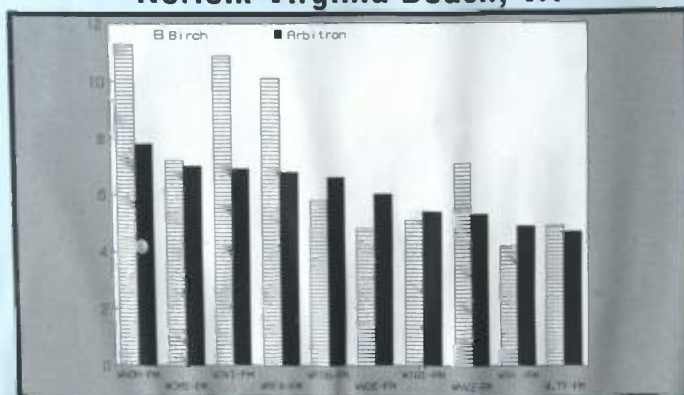
Ranked on: AqShr Su89	AqShr Bir Su89	AqShr ARB Su89	AqShr % Diff	Ranked on: AqShr Su89	AqShr Bir Su89	AqShr ARB Su89	AqShr % Diff
1 WYLD-FM	16.3	13.3	-18.4	6 WLMG-FM	3.3	5.1	54.5
2 WZLZ-FM	13.0	11.1	-14.6	7 WBYU-AM	3.1	5.0	61.3
3 WQDE-FM	15.1	10.3	-31.8	8 WBOB-AM	2.5	4.4	76.0
4 WLTG-FM	5.8	6.2	6.9	9 WNOE-FM	4.9	3.4	-30.6
5 WWL-AM	3.9	6.1	56.4	10 WQXY-FM	1.8	3.3	83.3

## New York



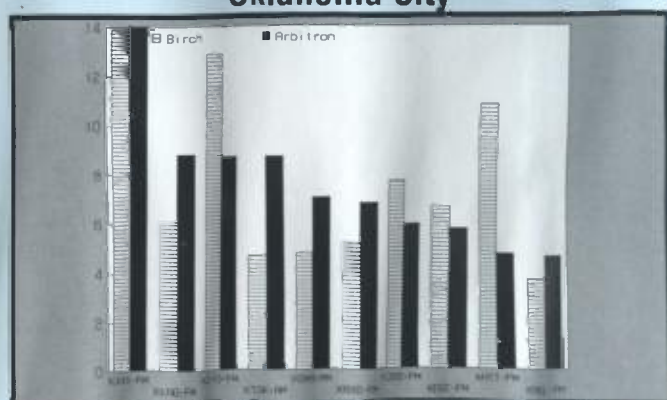
Ranked on: AqShr Su89	AqShr Bir Su89	AqShr ARB Su89	AqShr % Diff	Ranked on: AqShr Su89	AqShr Bir Su89	AqShr ARB Su89	AqShr % Diff
1 WHTZ-FM	6.6	5.7	-13.6	6 WBS-FM	3.8	4.2	10.7
2 WLTW-FM	3.0	5.7	58.3	7 WNEU-FM	4.6	4.2	-8.7
3 WINS-AM	3.8	4.5	18.4	8 WQHT-FM	5.5	3.9	-29.1
4 WOR-AM	3.6	4.3	19.4	9 WWS-FM	5.6	3.9	-30.4
5 WPAI-FM	3.0	4.3	43.3	10 WLS-FM	5.5	3.7	-32.7

## Norfolk-Virginia Beach, VA



Ranked on: AqShr Su89	AqShr Bir Su89	AqShr ARB Su89	AqShr % Diff	Ranked on: AqShr Su89	AqShr Bir Su89	AqShr ARB Su89	AqShr % Diff
1 WDR-FM	1.3	7.8	-81.0	6 WQDE-FM	4.0	6.0	25.0
2 WMS-FM	5.0	7.0	-28.6	7 WQXI-FM	5.1	5.4	5.9
3 WQXI-FM	10.0	5.9	-56.7	8 WNVZ-FM	2.1	5.3	25.4
4 WAFX-FM	10.0	6.8	-32.7	9 WQHT-FM	4.9	4.9	0.0
5 WQOK-FM	3.5	7.8	12.9	10 WLTW-FM	4.0	4.7	17.5

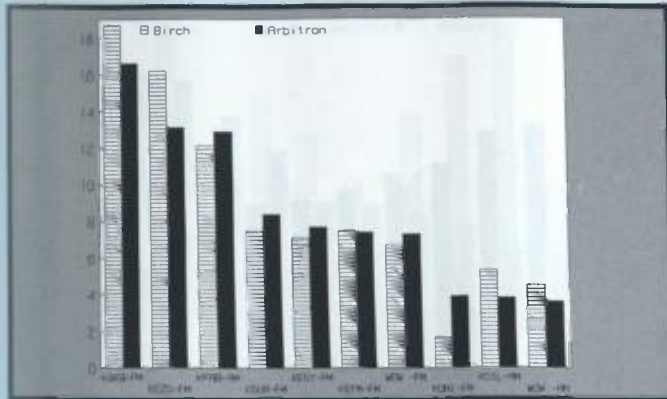
## Oklahoma City



Ranked on: AqShr Su89	AqShr Bir Su89	AqShr ARB Su89	AqShr % Diff	Ranked on: AqShr Su89	AqShr Bir Su89	AqShr ARB Su89	AqShr % Diff
1 KXOK-FM	13.9	14.0	0.7	6 KXOK-FM	5.2	6.8	30.8
2 KXNG-FM	5.1	8.8	43.3	7 KZBS-FM	7.7	5.9	-23.4
3 KXJO-FM	12.0	8.7	-27.5	8 KXOK-FM	6.6	5.7	-13.6
4 KXOK-AM	4.7	8.7	85.1	9 KAT-FM	10.0	4.7	-53.5
5 KOMA-AM	4.0	7.0	75.0	10 KM-FM	3.7	4.6	24.3

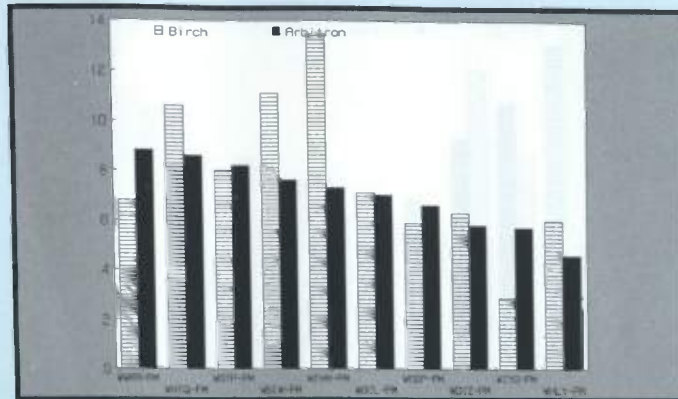


## Omaha



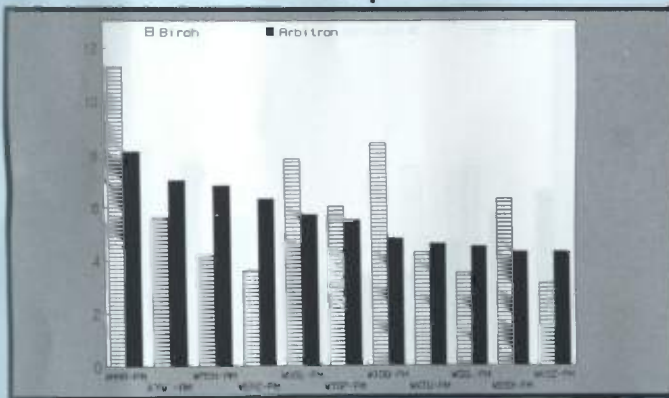
Ranked on:	AqShr	AqShr	AqShr	Ranked on:	AqShr	AqShr	AqShr
AqShr Su89	Bir Su89	ARB Su89	% Diff	AqShr Su89	Bir Su89	ARB Su89	% Diff
1 KDKB-FM	18.7	16.6	-11.2	6 KEFM-FM	7.5	7.4	-1.3
2 KETZ-FM	16.2	13.1	-19.1	7 WOW-FM	6.7	7.3	9.0
3 KFAB-AM	12.1	12.9	6.6	8 KOMJ-FM	1.7	3.9	128.4
4 KQDR-FM	7.5	8.4	12.0	9 KOIL-AM	5.3	3.8	-29.3
5 KESY-FM	7.1	7.7	8.5	10 WOW-AM	4.5	3.6	-20.0

## Orlando



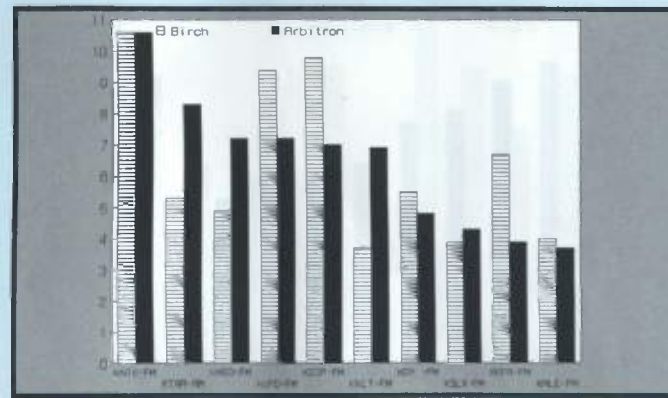
Ranked on:	AqShr	AqShr	AqShr	Ranked on:	AqShr	AqShr	AqShr
AqShr Su89	Bir Su89	ARB Su89	% Diff	AqShr Su89	Bir Su89	ARB Su89	% Diff
1 WWSA-FM	6.8	8.6	25.4	6 WOCL-FM	7.1	7.0	-1.4
2 WFTQ-FM	10.6	8.6	-18.9	7 WOSP-FM	5.9	6.6	11.9
3 WSTF-FM	8.0	8.2	2.5	8 WQZ-FM	8.3	5.8	-29.9
4 WBW-FM	11.1	7.6	-31.5	9 WUVO-FM	2.9	5.7	96.6
5 WJHM-FM	13.5	7.3	-45.9	10 WHLY-FM	5.0	4.6	-8.0

## Philadelphia



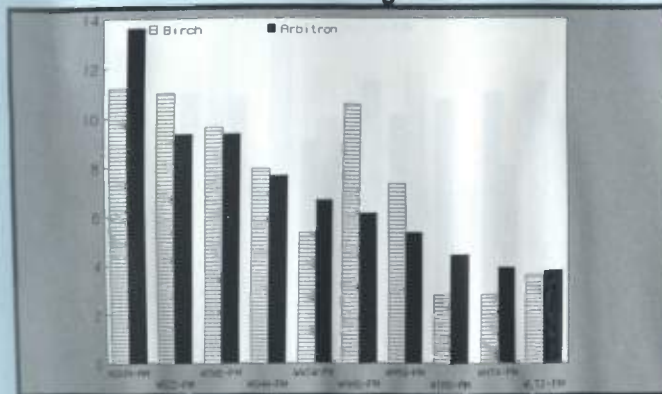
Ranked on:	AqShr	AqShr	AqShr	Ranked on:	AqShr	AqShr	AqShr
AqShr Su89	Bir Su89	ARB Su89	% Diff	AqShr Su89	Bir Su89	ARB Su89	% Diff
1 WMMR-FM	11.3	8.1	-28.3	6 WYSP-FM	6.0	5.5	-8.3
2 KYW-AM	5.5	7.0	25.0	7 WQQ-FM	8.4	4.8	-42.9
3 WPEN-AM	4.2	6.8	61.9	8 WXTU-FM	4.3	4.6	7.0
4 WEAZ-FM	3.6	6.3	75.0	9 WQGL-FM	3.5	4.5	28.6
5 WUSL-FM	7.8	5.7	-26.9	10 WEGX-FM	6.3	4.3	-31.7
				10 WKSE-FM	3.1	4.3	38.7

## Phoenix



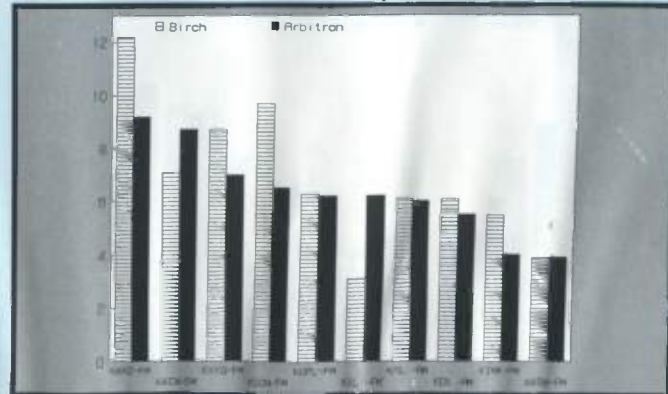
Ranked on:	AqShr	AqShr	AqShr	Ranked on:	AqShr	AqShr	AqShr
AqShr Su89	Bir Su89	ARB Su89	% Diff	AqShr Su89	Bir Su89	ARB Su89	% Diff
1 KQJL-FM	10.6	10.6	0.0	6 KQJL-FM	3.7	6.9	86.5
2 KTAR-AM	5.3	8.3	56.6	7 KQY-FM	5.5	4.8	-12.7
3 KMEQ-FM	4.9	7.2	46.9	8 KSLX-FM	3.9	4.3	10.3
4 KUPD-FM	9.4	7.7	-23.4	9 KQFR-FM	6.7	3.9	-41.8
5 KZPZ-FM	9.8	7.0	-28.6	10 KMLE-FM	4.0	3.7	-7.5

## Pittsburgh



Ranked on:	AqShr	AqShr	AqShr	Ranked on:	AqShr	AqShr	AqShr
AqShr Su89	Bir Su89	ARB Su89	% Diff	AqShr Su89	Bir Su89	ARB Su89	% Diff
1 KDKA-AM	18.2	13.6	-24.7	6 WAMO-FM	10.5	6.1	-41.9
2 WREZ-FM	11.9	9.3	-21.8	7 WMYG-FM	7.3	5.3	-27.4
3 WQVE-FM	9.6	9.3	-3.1	8 WVAS-AM	2.8	4.4	57.1
4 WQVE-FM	7.9	7.9	0.0	9 WHTX-FM	2.9	3.9	33.3
5 WQVE-FM	5.3	6.8	28.3	10 WJF-FM	3.5	3.8	8.6

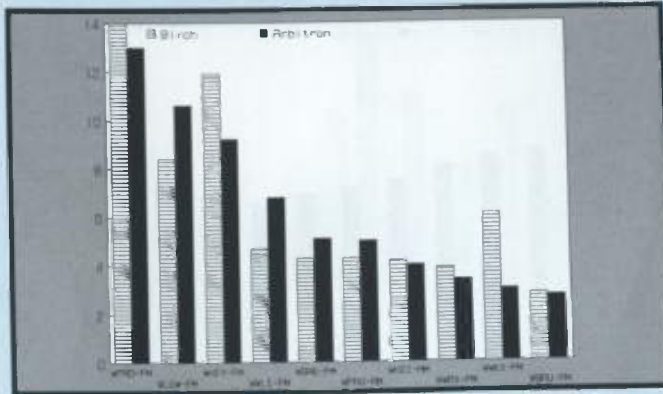
## Portland, OR



Ranked on:	AqShr	AqShr	AqShr	Ranked on:	AqShr	AqShr	AqShr
AqShr Su89	Bir Su89	ARB Su89	% Diff	AqShr Su89	Bir Su89	ARB Su89	% Diff
1 KRRZ-FM	12.2	9.2	-24.6	51 KOL-FM	3.1	6.2	100.0
2 KQOW-FM	7.1	8.7	22.5	7 KOL-AM	6.1	6.0	-1.6
3 KQYO-FM	8.7	7.0	-19.5	8 KEX-AM	6.1	5.5	-9.8
4 KQON-FM	8.7	8.5	-2.3	9 KINK-FM	5.5	4.0	-27.3
5 KULP-FM	5.3	6.2	16.9	10 KQSN-FM	3.9	3.4	-12.8

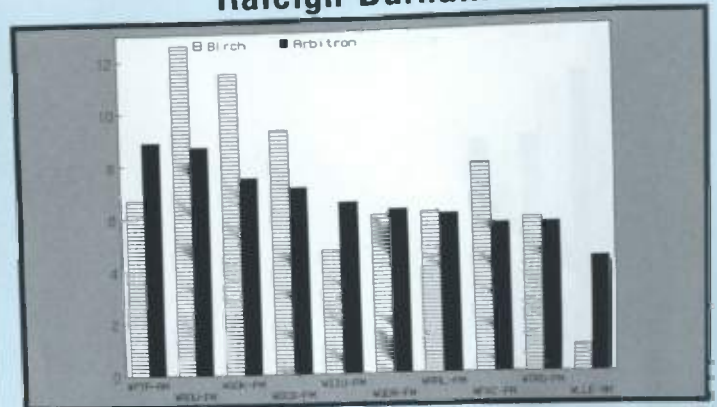


## Providence-Warwick



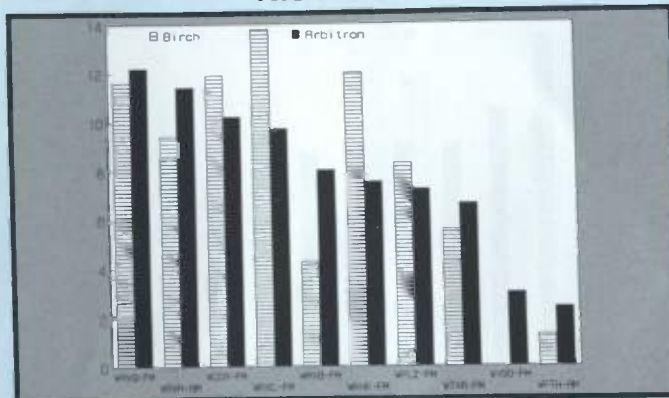
Ranked on:	AqShr	AqShr	AqShr	Ranked on:	AqShr	AqShr	AqShr
AqShr Su89	Bir Su89	ARB Su89	% Diff	AqShr Su89	Bir Su89	ARB Su89	% Diff
1 WPRI-FM	14.0	13.0	-7.1	6 WPRO-AM	4.2	5.8	16.3
2 WUPV-FM	8.4	10.6	26.2	7 WHUJ-AM	4.2	4.0	-4.8
3 WEEA-FM	11.9	9.2	-22.7	8 WWRX-FM	3.9	3.4	-12.8
4 WEEA-FM	4.7	6.8	44.7	9 WWOX-FM	6.1	3.0	-50.8
5 WEEA-FM	4.3	5.1	18.6	10 WBRU-FM	2.8	2.7	-3.6

## Raleigh-Durham



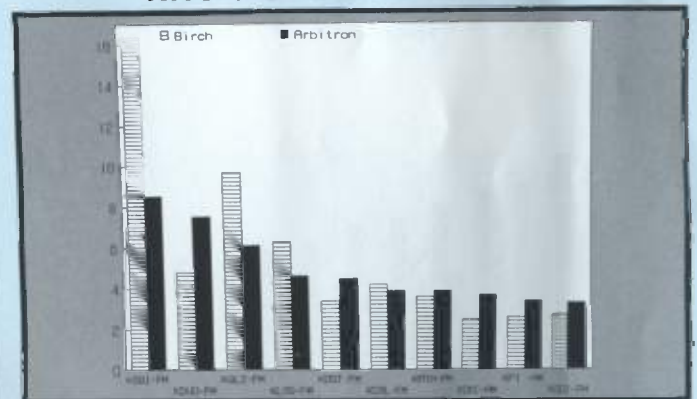
Ranked on:	AqShr	AqShr	AqShr	Ranked on:	AqShr	AqShr	AqShr
AqShr Su89	Bir Su89	ARB Su89	% Diff	AqShr Su89	Bir Su89	ARB Su89	% Diff
1 WPTV-FM	6.7	8.9	32.8	6 WDRB-FM	6.0	6.2	3.3
2 WDRB-FM	12.6	8.7	-31.0	7 WRAL-FM	6.1	6.0	-1.6
3 WOCB-FM	11.5	7.5	-34.8	8 WFXB-FM	7.9	5.6	-29.1
4 WOCB-FM	9.3	7.1	-23.7	9 WTRG-FM	5.8	5.6	-3.4
5 WZZL-FM	4.7	6.5	36.3	10 WLEA-AM	1.0	4.3	330.0

## Richmond



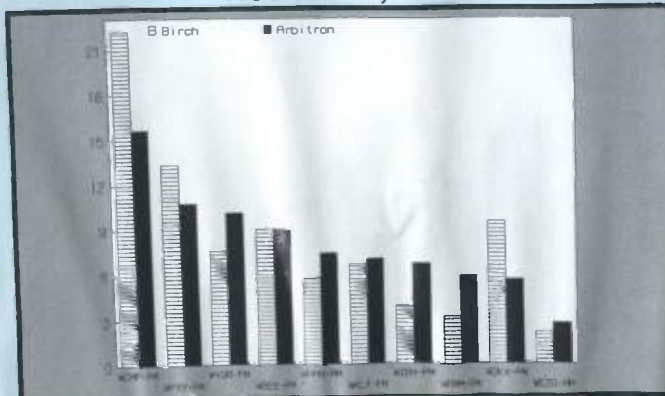
Ranked on:	AqShr	AqShr	AqShr	Ranked on:	AqShr	AqShr	AqShr
AqShr Su89	Bir Su89	ARB Su89	% Diff	AqShr Su89	Bir Su89	ARB Su89	% Diff
1 WVIR-FM	11.6	12.2	5.2	6 WKIN-FM	12.0	7.5	-37.5
2 WIVA-AM	9.4	11.4	21.3	7 WPLZ-FM	8.3	7.2	-13.3
3 WDCX-FM	11.9	10.2	-14.3	8 WTVR-FM	5.6	6.6	17.9
4 WROL-FM	13.8	9.7	-29.7	9 WVGO-FM	0.0	3.0	100.0
5 WMAZ-FM	4.3	9.0	86.0	10 WFTL-AM	1.3	2.4	84.6

## Riverside-San Bernardino



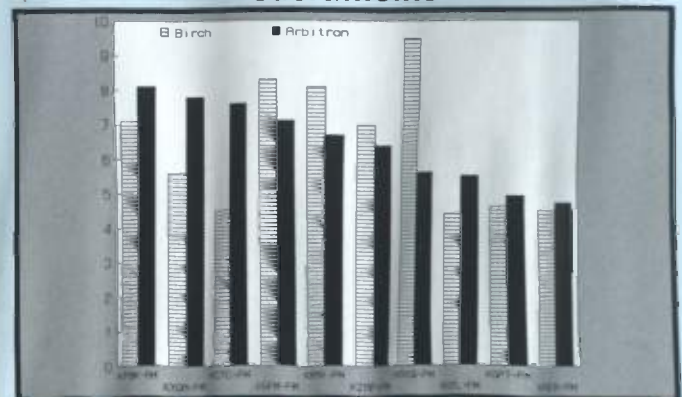
Ranked on:	AqShr	AqShr	AqShr	Ranked on:	AqShr	AqShr	AqShr
AqShr Su89	Bir Su89	ARB Su89	% Diff	AqShr Su89	Bir Su89	ARB Su89	% Diff
1 KGGI-FM	16.4	8.5	-48.2	10 KCAL-FM	4.2	3.9	-7.1
2 KDUO-FM	4.8	7.5	56.2	11 KRTH-FM	3.8	3.9	8.3
3 KOLZ-FM	9.7	6.1	-37.1	8 KCKC-AM	2.5	3.7	48.0
4 KLOS-FM	6.3	4.6	-27.0	9 KFI-AM	2.6	2.4	-30.8
5 KOST-FM	3.4	4.5	32.4	10 KDDJ-FM	2.7	3.3	22.2

## Rochester, NY



Ranked on:	AqShr	AqShr	AqShr	Ranked on:	AqShr	AqShr	AqShr
AqShr Su89	Bir Su89	ARB Su89	% Diff	AqShr Su89	Bir Su89	ARB Su89	% Diff
1 WCMF-FM	20.0	15.0	-25.0	6 WGLX-FM	6.7	7.0	0.3
2 WPKY-FM	13.0	10.7	-17.7	7 WSHM-FM	3.9	6.7	71.8
3 WQDR-FM	7.0	10.1	44.3	8 WMMF-FM	3.2	5.9	84.4
4 WPEC-FM	9.0	9.0	0.0	9 WIKX-FM	8.5	5.6	-33.9
5 WHAM-AM	4.0	7.4	85.0	10 WZLZ-AM	2.1	2.7	28.6

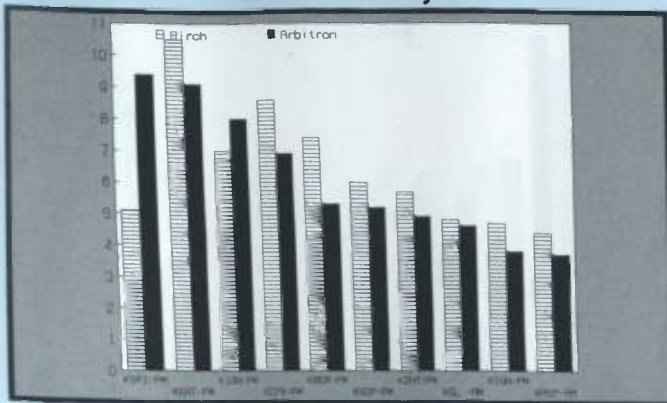
## Sacramento



Ranked on:	AqShr	AqShr	AqShr	Ranked on:	AqShr	AqShr	AqShr
AqShr Su89	Bir Su89	ARB Su89	% Diff	AqShr Su89	Bir Su89	ARB Su89	% Diff
1 KFBK-AM	7.1	8.1	14.1	6 KZAP-FM	7.0	6.4	-8.6
2 KXOA-FM	5.6	7.8	39.3	7 KROQ-FM	9.5	5.6	-41.1
3 KQDF-FM	5.0	7.0	40.0	8 KNYL-FM	4.4	5.5	25.0
4 KSPR-FM	8.3	7.1	-14.5	9 KQRT-FM	4.8	4.9	2.1
5 KRAI-FM	8.1	6.7	-17.3	10 KAERTL	4.5	4.7	4.4

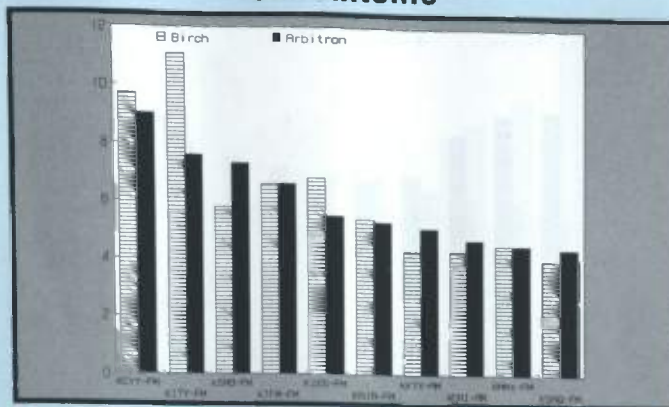


## Salt Lake City



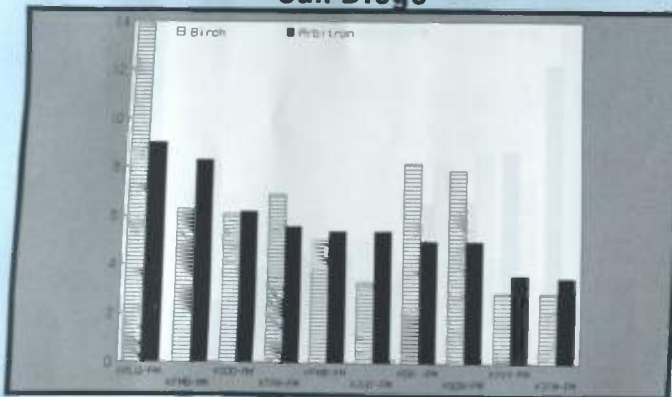
Ranked on:	AqShr	AqShr	AqShr	Ranked on:	AqShr	AqShr	AqShr
AqShr Su89	Bir Su89	ARB Su89	% Diff	AqShr Su89	Bir Su89	ARB Su89	% Diff
1 KSL-FM	5.1	9.4	84.3	6 KSL-FM	6.0	5.2	-13.3
2 KKAT-FM	10.5	9.1	-13.3	7 KSL-FM	5.7	4.9	-14.0
3 KJZZ-FM	7.6	5.0	-34.4	8 KSL-FM	4.8	4.5	-6.3
4 KJZZ-FM	8.6	6.0	-30.1	9 KJZZ-FM	4.7	3.8	-19.1
5 KJZZ-FM	7.4	5.3	-28.4	10 KJZZ-FM	4.4	3.7	-15.9

## San Antonio



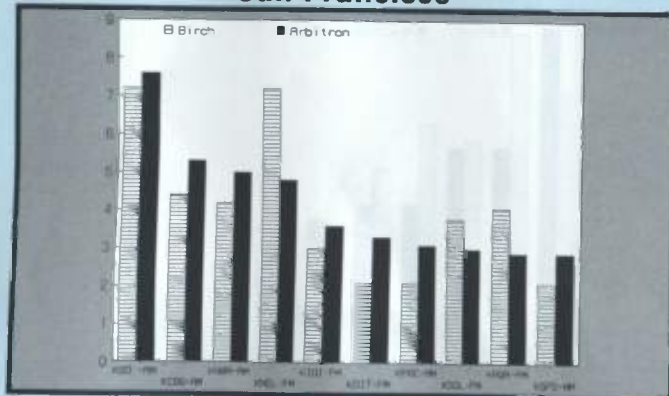
Ranked on:	AqShr	AqShr	AqShr	Ranked on:	AqShr	AqShr	AqShr
AqShr Su89	Bir Su89	ARB Su89	% Diff	AqShr Su89	Bir Su89	ARB Su89	% Diff
1 KJZZ-FM	9.7	9.9	2.2	6 KJZZ-FM	5.4	5.3	-1.9
2 KJZZ-FM	11.1	7.8	-30.6	7 KJZZ-FM	4.3	5.1	18.6
3 KJZZ-FM	5.8	7.3	25.9	8 KJZZ-FM	4.3	4.7	9.3
4 KJZZ-FM	6.6	6.6	0.0	9 KJZZ-FM	4.5	4.5	0.0
5 KJZZ-FM	6.8	5.5	-19.1	10 KJZZ-FM	4.0	4.4	10.0

## San Diego



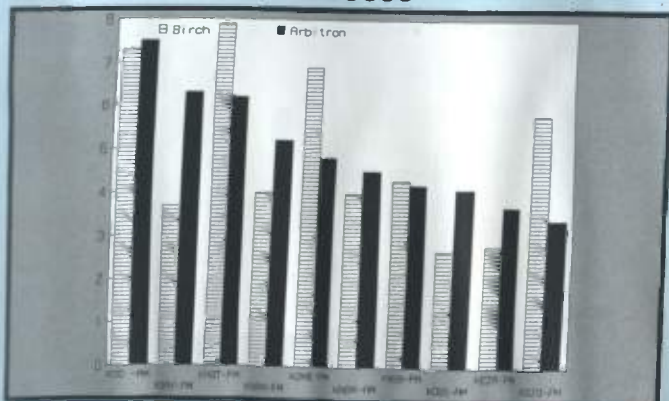
Ranked on:	AqShr	AqShr	AqShr	Ranked on:	AqShr	AqShr	AqShr
AqShr Su89	Bir Su89	ARB Su89	% Diff	AqShr Su89	Bir Su89	ARB Su89	% Diff
1 KJZZ-FM	13.9	9.0	-35.3	5 KJZZ-FM	3.3	5.4	63.6
2 KJZZ-FM	6.3	8.3	31.7	6 KJZZ-FM	8.2	5.0	-39.0
3 KJZZ-FM	6.1	6.2	1.6	7 KJZZ-FM	7.8	5.0	-36.7
4 KJZZ-FM	6.9	5.8	-15.8	8 KJZZ-FM	2.9	3.8	31.0
5 KJZZ-FM	5.1	5.4	5.9	9 KJZZ-FM	2.9	3.5	20.7

## San Francisco



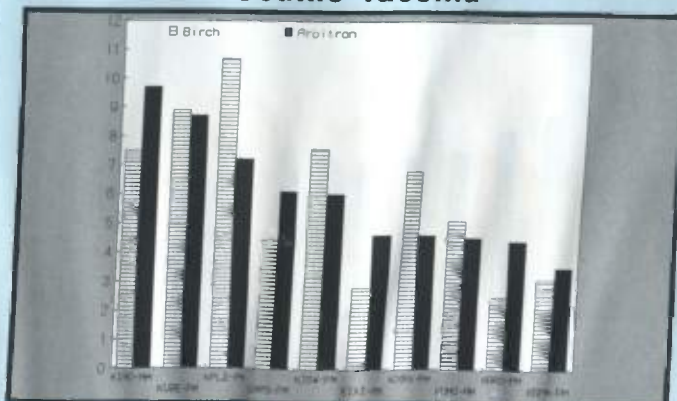
Ranked on:	AqShr	AqShr	AqShr	Ranked on:	AqShr	AqShr	AqShr
AqShr Su89	Bir Su89	ARB Su89	% Diff	AqShr Su89	Bir Su89	ARB Su89	% Diff
1 KJZZ-FM	7.2	7.8	5.6	6 KJZZ-FM	2.1	3.3	57.1
2 KJZZ-FM	4.4	5.3	20.5	7 KJZZ-FM	2.1	3.1	47.6
3 KJZZ-FM	4.2	5.0	19.0	8 KJZZ-FM	3.8	3.0	-21.1
4 KJZZ-FM	7.2	4.8	-33.3	9 KJZZ-FM	4.1	2.9	-29.3
5 KJZZ-FM	3.0	3.6	20.0	10 KJZZ-FM	2.1	2.9	38.1

## San Jose



Ranked on:	AqShr	AqShr	AqShr	Ranked on:	AqShr	AqShr	AqShr
AqShr Su89	Bir Su89	ARB Su89	% Diff	AqShr Su89	Bir Su89	ARB Su89	% Diff
1 KJZZ-FM	5.3	7.5	2.7	6 KJZZ-FM	4.0	4.5	12.5
2 KJZZ-FM	3.7	6.3	70.3	7 KJZZ-FM	4.3	4.2	-2.3
3 KJZZ-FM	7.8	6.2	-21.5	8 KJZZ-FM	2.7	4.1	51.9
4 KJZZ-FM	4.2	5.2	24.0	9 KJZZ-FM	2.8	3.7	32.1
5 KJZZ-FM	6.2	4.0	-35.5	10 KJZZ-FM	5.0	3.4	-32.0

## Seattle-Tacoma



Ranked on:	AqShr	AqShr	AqShr	Ranked on:	AqShr	AqShr	AqShr
AqShr Su89	Bir Su89	ARB Su89	% Diff	AqShr Su89	Bir Su89	ARB Su89	% Diff
1 KJZZ-FM	7.5	9.7	29.3	6 KJZZ-FM	2.8	4.6	64.3
2 KJZZ-FM	8.9	8.7	-2.2	7 KJZZ-FM	4.8	4.6	-4.2
3 KJZZ-FM	10.7	7.2	-32.7	8 KJZZ-FM	5.1	4.5	-11.8
4 KJZZ-FM	4.4	6.1	38.6	9 KJZZ-FM	2.4	4.4	75.0
5 KJZZ-FM	7.8	6.0	-23.1	10 KJZZ-FM	3.1	3.5	12.9

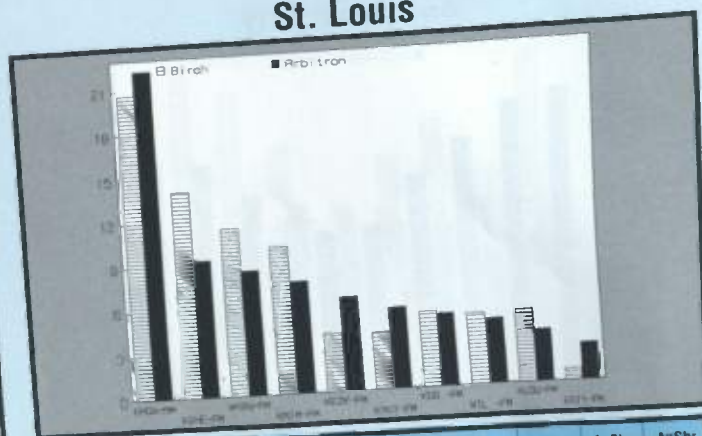


## Springfield, MA



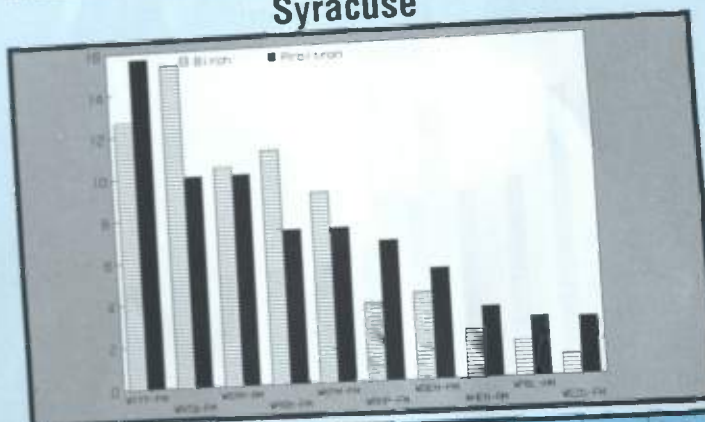
Ranked on: AqShr Su89				AqShr Bir Su89	AqShr ARB Su89	AqShr % Diff	Ranked on: AqShr Su89		AqShr Bir Su89	AqShr ARB Su89	AqShr % Diff
1	WAGY-FM	13.6	10.7	-21.3	6	WRCH-FM	4.5	6.1	35.5		
2	WYIC-FM	11.1	10.5	-5.4	7	WMAS-AM	3.1	4.0	29.0		
3	WYNN-FM	10.1	9.7	-4.0	8	WCCC-FM	2.9	3.1	6.9		
4	WMAS-FM	7.4	8.0	8.1	9	WWYZ-FM	3.2	3.0	-6.3		
5	WYNN-AM	6.6	7.8	18.2	10	WHMP-FM	3.4	2.9	-14.7		

## St. Louis



Ranked on: AqShr Su89				AqShr Bir Su89	AqShr ARB Su89	AqShr % Diff	Ranked on: AqShr Su89		AqShr Bir Su89	AqShr ARB Su89	AqShr % Diff
1	KMOX-AM	20.7	22.3	1.0	6	KYKY-FM	3.0	5.5	1.0		
2	KSHE-FM	14.0	9.3	-4.7	7	KSD-FM	5.1	4.9	-0.2		
3	WKBO-FM	11.4	8.5	-2.9	8	WIL-FM	4.8	4.4	-0.4		
4	KJAM-FM	10.0	7.6	-2.4	9	KLOU-FM	4.9	3.5	-1.4		
5	KEZZ-FM	4.0	6.4	2.4	10	KRUY-FM	0.8	2.5	1.7		

## Syracuse



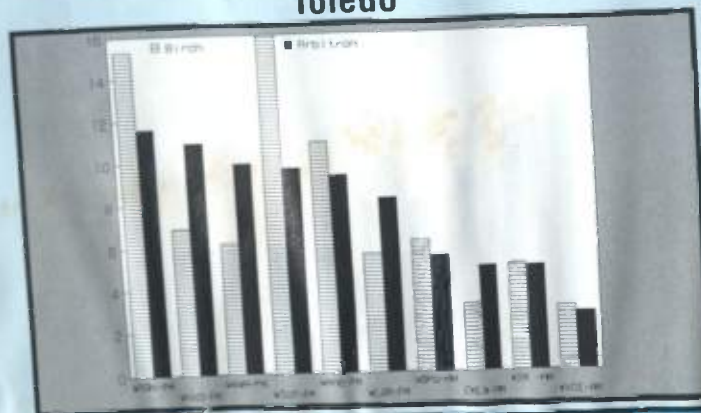
Ranked on: AqShr Su89	AqShr Bir Su89	AqShr ARB Su89	AqShr % Diff	Ranked on: AqShr Su89	AqShr Bir Su89	AqShr ARB Su89	AqShr % Diff		
1	WYNY-FM	12.7	15.7	23.6	6	WRHP-FM	3.7	6.6	78.4
2	WTNQ-FM	15.4	10.0	-35.1	7	WSEN-FM	4.1	5.2	26.6
3	WYSR-AM	10.4	10.0	-3.8	8	WHEN-AM	2.3	3.3	43.5
4	WAGZ-FM	11.1	7.3	-34.2	9	WFBL-AM	1.7	2.8	64.7
5	WQFM-FM	9.0	7.3	-18.9	10	WEZG-FM	1.0	2.7	170.0

## Tampa-St. Petersburg



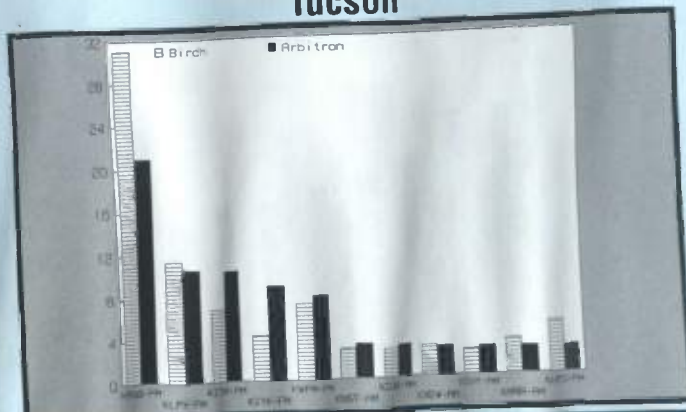
Ranked on: AqShr Su89		AqShr Bir Su89	AqShr ARB Su89	AqShr % Diff	Ranked on: AqShr Su89		AqShr Bir Su89	AqShr ARB Su89	AqShr % Diff
1	WRBQ FM	15.9	13.9	-12.6	6	WFLA-AM	3.9	5.0	28.2
2	WYNN FM	6.5	9.9	36.5	7	WUSA-FM	4.5	5.0	11.1
3	WQYK FM	9.8	7.5	-23.5	8	WNL-FM	6.6	4.4	-33.3
4	WYLF FM	9.3	7.4	-20.4	9	WYNN-FM	3.1	2.8	-9.7
5	WDUV FM	3.7	6.2	67.6	10	WDAE-AM	2.3	2.6	13.0
					11	WFLZ-FM	3.8	2.5	-34.6

## Toledo



Ranked on: AqShr Su89				Ranked on: AqShr Su89					
	AqShr Bir Su89	AqShr ARB Su89	AqShr % Diff		AqShr Bir Su89	AqShr ARB Su89	AqShr % Diff		
1	WRON-FM	15.3	11.6	-24.2	6	WLOR-FM	3.6	8.2	46.4
2	WRON-FM	10.3	10.9	58.8	7	WSPD-AM	6.2	5.3	-13.3
3	WRON-FM	6.1	9.8	59.7	8	OKLW-AM	3.2	4.9	53.1
4	WRON-FM	10.3	9.7	-47.0	9	WJW-AM	5.0	4.9	-2.0
5	WRON-FM	10.3	9.3	-14.7	10	WVO-AM	2.0	2.7	-26.0

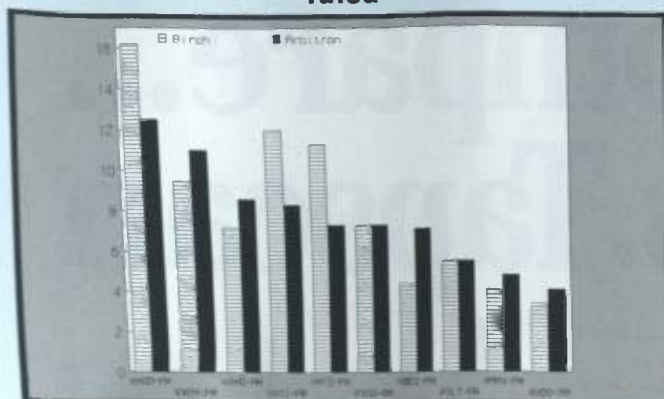
## Tucson



Ranked on: AqShr Su89	AqShr Bir Su89	AqShr ARB Su89	AqShr % Diff	Ranked on: AqShr Su89	AqShr Bir Su89	AqShr ARB Su89	AqShr % Diff		
1	KRQQ-FM	31.1	20.9	-32.8	6	KNST-AM	2.8	3.2	14.3
2	KLPX-FM	11.4	10.5	-7.9	7	KCUB-AM	2.7	3.0	11.1
3	KJIM-FM	6.8	10.3	51.5	8	KKEW-AM	2.9	2.8	-3.4
4	KJYK-FM	4.3	6.9	107.0	9	KGVY-AM	2.4	2.7	12.5
5	KWFM-FM	7.2	7.9	9.7	10	KARR-AM	3.2	2.5	-21.9
					11	KUPD-FM	4.0	2.5	-47.9

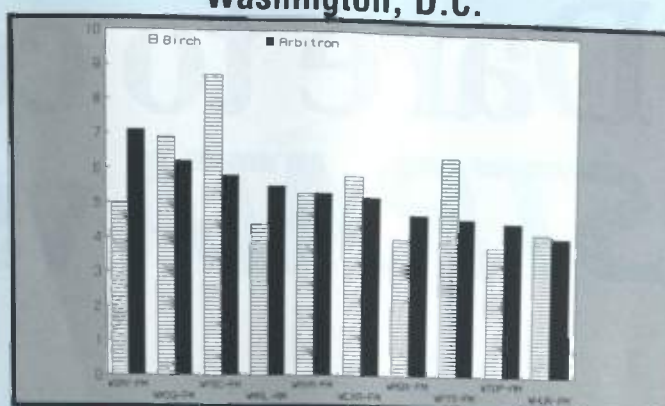


## Tulsa



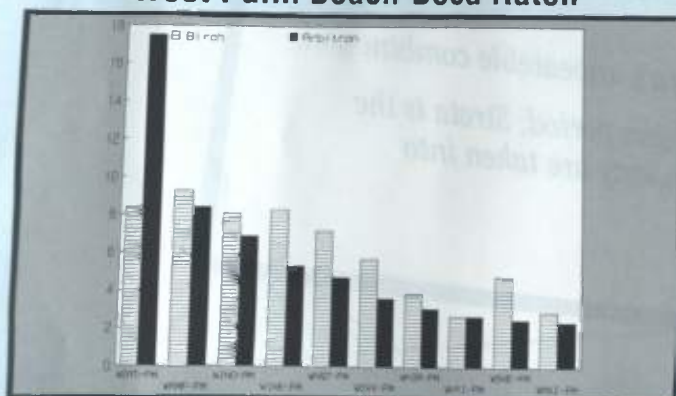
Ranked on: AqShr Su89	AqShr Bir Su89	AqShr ARB Su89	AqShr % Diff	Ranked on: AqShr Su89	AqShr Bir Su89	AqShr ARB Su89	AqShr % Diff
1 KMOO-FM	16.2	12.5	-22.8	5 KVOO-AM	7.3	7.3	0.0
2 KWEN-FM	9.5	11.0	15.0	7 KBZZ-FM	4.4	7.1	61.4
3 KRMG-AM	7.2	8.6	19.4	8 KYLT-FM	5.5	5.5	0.0
4 KAYI-FM	12.0	8.3	-30.8	9 KRAY-FM	4.1	4.8	17.1
5 KMYZ-FM	11.3	7.3	-35.4	10 KVOO-FM	3.4	4.1	20.6

## Washington, D.C.



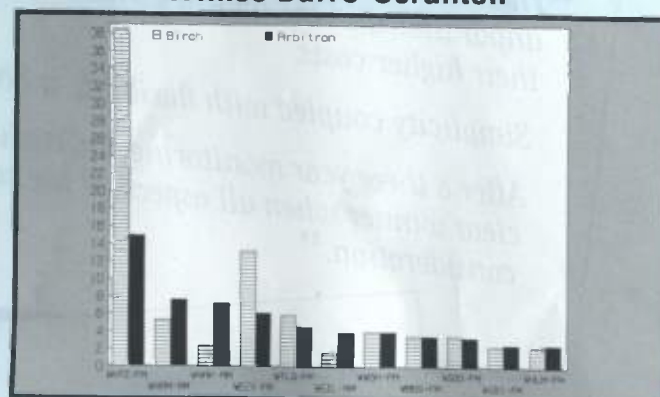
Ranked on: AqShr Su89	AqShr Bir Su89	AqShr ARB Su89	AqShr % Diff	Ranked on: AqShr Su89	AqShr Bir Su89	AqShr ARB Su89	AqShr % Diff
1 WDAY-FM	5.6	7.1	42.6	6 WQXR-FM	5.6	5.2	-10.3
2 WJLA-FM	6.9	6.2	-10.1	7 WJLA-FM	4.0	4.7	17.5
3 WPGC-FM	8.7	5.0	-33.3	8 WKYS-FM	6.4	4.6	-28.1
4 WMAL-AM	4.4	5.5	25.0	9 WTOP-AM	3.8	4.5	18.4
5 WAVA-FM	5.3	5.3	0.0	10 WHUR-FM	4.2	4.1	-2.4

## West Palm Beach-Boca Raton



Ranked on: AqShr Su89	AqShr Bir Su89	AqShr ARB Su89	AqShr % Diff	Ranked on: AqShr Su89	AqShr Bir Su89	AqShr ARB Su89	AqShr % Diff
1 WJAT-FM	8.4	17.5	108.3	6 WQVW-FM	5.7	3.6	-36.8
2 WJMF-FM	9.3	8.4	-9.7	7 WQGR-FM	3.9	3.1	-20.5
3 WJNO-AM	8.1	6.9	-14.8	8 WYH-FM	2.7	2.7	0.0
4 WJRK-FM	6.3	5.3	-16.1	9 WJHE-FM	4.8	2.5	-47.9
5 WJOT-FM	7.2	4.7	-34.7	10 WJXJ-FM	2.8	2.4	-17.2

## Wilkes Barre-Scranton



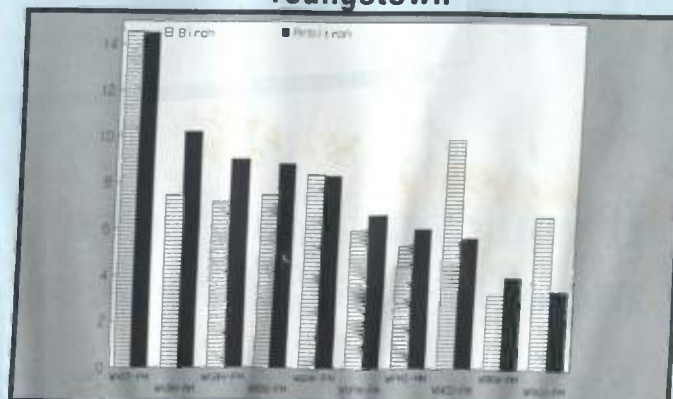
Ranked on: AqShr Su89	AqShr Bir Su89	AqShr ARB Su89	AqShr % Diff	Ranked on: AqShr Su89	AqShr Bir Su89	AqShr ARB Su89	AqShr % Diff
1 WKYZ-FM	18.5	14.9	-19.5	6T WJLA-AM	1.7	4.0	135.3
2 WAFM-AM	5.3	7.6	43.4	6T WWSH-FM	4.0	4.0	0.0
3 WNAK-AM	2.4	7.3	204.2	8 WWSG-FM	3.5	3.5	0.0
4 WJZX-FM	13.2	6.1	-53.8	9 WJSD-FM	3.6	3.4	-5.6
5 WTLQ-FM	5.9	4.6	-22.0	10T WJLA-AM	2.4	2.6	8.3
				10T WJLM-FM	2.5	2.6	4.0

## York



Ranked on: AqShr Su89	AqShr Bir Su89	AqShr ARB Su89	AqShr % Diff	Ranked on: AqShr Su89	AqShr Bir Su89	AqShr ARB Su89	AqShr % Diff
1 WYCF-FM	12.5	17.8	24.4	6 WGTI-FM	6.1	7.0	14.4
2 WYBN-AM	10.3	9.7	-5.8	7 WQXA-FM	6.3	5.3	-15.7
3 WYBN-FM	14	9.2	-34.3	8 WQXA-FM	7.3	3.6	-50.7
4 WYCF-FM	12.5	9.2	-26.4	9 WYCF-FM	5.1	2.9	-43.1
5 WYCF-FM	12.5	7.5	-39.2	10 WQOC-FM	1.5	2.2	46.7

## Youngstown



Ranked on: AqShr Su89	AqShr Bir Su89	AqShr ARB Su89	AqShr % Diff	Ranked on: AqShr Su89	AqShr Bir Su89	AqShr ARB Su89	AqShr % Diff
1 WYCF-FM	14.0	14.5	0.7	6 WYFM-FM	1.1	6.6	10.0
2 WYBN-AM	7.5	11.2	36.0	7 WYFM-AM	5.1	6.0	13.7
3 WYBN-FM	7.2	10	25.0	8 WYCF-FM	9.9	5.6	-43.4
4 WYBN-FM	7.5	11.2	36.0	9 WYCF-FM	3.2	4.0	25.0
5 WYBN-FM	7.4	11.2	36.0	10 WYCF-FM	3.4	3.4	-48.5



# Dare to compare... **STRATA** vs. Tapscan<sup>TM</sup>

**Bruce Hoban**  
VP Research Systems Development  
Katz Radio Group

*"Their track record for on-site training and customer service is unparalleled in the industry. This unqualified level of service justifies their higher costs.*

*Simplicity coupled with flexibility is Strata's unbeatable combination.*

*After a three year monitoring and evaluation period, Strata is the clear winner when all aspects of the company are taken into consideration."*

**John Kijowski**  
General Sales Manager  
KUSA/KSD-FM, St. Louis

**Bob Rowe**  
National Sales Manager

*"After trying [the] Tapscan SuperGrid<sup>TM</sup> and Strata's RadioCalc for a three month period, the results are conclusive. Strata's RadioCalc is superior!"*

**If you don't have three years – or even three months – ask for a demonstration today.**

**Experience the difference!**

**STRATA**

Strata Marketing, Inc. 540 N. Lake Shore Drive, Chicago, Illinois 60611 (312) 222-1555