

ROCK ■ AIRPLAY Monitor

• We Listen To Radio •

November 7, 1997 \$4.95 Volume 4 • No. 45

ROCK HIGHLIGHTS

MAINSTREAM

#1

DAYS OF THE NEW

Touch, Peel And Stand (OUTPOST/GEFFEN)

★★★ AIRPOWER ★★★

SAMMY HAGAR • *Both Sides Now (THE TRACK FACTORY/MCA)*
SOUNDGARDEN • *Bleed Together (A&M)*

GOING FOR AIRPLAY

HURRICANE #1 • *Step Into My World (SIRE/WARNER BROS.)*
JOAN JETT & THE BLACKHEARTS • *Everyday People (BLACKHEART/MERCURY)*
METALLICA • *The Memory Remains (ELEKTRA/EEG)*
POWERMAN 5000 • *Neckbone (DREAMWORKS/GEFFEN)*
RAGE AGAINST THE MACHINE • *The Ghost Of Tom Joad (EPIC)*
TALK SHOW • *Everybody Loves My Car (ATLANTIC)*
WIDE MOUTH MASON • *My Old Self (ATLANTIC)*

MODERN

#1

CHUMBAWAMBA

Tubthumping (REPUBLIC/UNIVERSAL)

★★★ AIRPOWER ★★★

MARCY PLAYGROUND • *Sex & Candy (MAMMOTH/CAPITOL)*
THE WALLFLOWERS • *Three Marlenas (INTERSCOPE)*

GOING FOR AIRPLAY

BJORK • *Bachelorette (ELEKTRA/EEG)*
GUS GUS • *Polyesterday (4AD/WARNER BROS.)*
JOAN JETT & THE BLACKHEARTS • *Everyday People (BLACKHEART/MERCURY)*
ABRA MOORE • *Don't Feel Like Cryin' (ARISTA AUSTIN/ARISTA)*
FINLEY QUAYE • *Sunday Shining (550 MUSIC)*
RAGE AGAINST THE MACHINE • *The Ghost Of Tom Joad (EPIC)*
TALK SHOW • *Everybody Loves My Car (ATLANTIC)*

TRIPLE A

#1

BLUES TRAVELER

Most Precarious (A&M)

★★★ AIRPOWER ★★★

SARAH MCLACHLAN • *Sweet Surrender (ARISTA)*

Classic Rock Hits Record Heights, Modern Flat, According To National Arbs

by Sean Ross

Classic rock and R&B stations continued to show record growth. Top 40, which can usually expect some help from teens in the summer, posted its best numbers in several years, due to gains in adult listening. Country seems to have leveled. And modern rock remained flat overall but showed upper-demo gains, leading one to wonder how, exactly, that format is feeling the impact of the growth of modern AC.

Those were some of the highlights of Airplay Monitor and Billboard's exclusive national Arbitron ratings for the summer '97 book. The numbers are based on a composite of Arbitron's year-round measurement markets.

News/talk stations held at 15.6% of national listening this summer, followed by AC, the perennial music-format ratings leader, which was off slightly, 14.8-14.6. R&B was up 11.0-11.4, opening up a 1-share lead over former third-place country, which held at a 10.4. Top 40 was up 8.8-9.0, its best 12-plus number since summer '95. Album rock slipped 7.0-6.8 but held sixth place. It was followed by oldies (flat at 6.3), Spanish (6.3-6.2), showing its first slippage in nearly two

years, classic rock (4.6-4.9), modern rock (flat at 4.1), and adult standards (3.5-3.4).

Because this was a summer book, there were certain things you'd expect to find that did, in fact, materialize. Certain formats got a 12-plus boost in middays as a result of redistributed teen listening, among them top 40 (7.4-8.2), R&B (8.7-9.5), and modern (3.4-3.7). The difference, however, was that the usual teen boost in middays wasn't always accompanied by a crash in other dayparts. R&B was down at night (17.8-17.2) but flat in mornings (9.5) and up in afternoons (10.9-11.2). Top 40 was off in mornings (7.9-7.6) but up at night (11.6-11.8) and in afternoons (9.4-9.5).

In fact, the most interesting thing about top 40's continued comeback is that it's not being driven by the younger end. Top 40 was down very slightly with teens (28.9-28.8), offsetting a teen jump of more than a share in the spring, suggesting that any impact from Spice Girls/Hanson/Backstreet Boys mania probably took place then. And while top 40's overall 12-plus gain only puts the format back where it was two years ago, top 40's gain in the 25-54 demo (7.2-7.5) gives

Continued on page 5

They shattered all records with a three-month reign at the top of the metal charts...

They graduated to headliner status after blowing away concert audiences opening for Iggy, Rollins Band, Anthrax, Powerman 5000, and The Nixons...

They brought you a "BLACK" October...

and now SEVENDUST is breaking!

"For active rockers, it's great for the core audience and it's something you can turn up real loud! It's working great for us on the air and phones!" - John Osterlind/WAAF

"They are one of the best undiscovered rock groups out right now. The band appeals to 18-24's and 25-30's." - Mike Stern/KXTE

"Top 5 phones first week - need I say more? No need for Q-Tips, this will melt your earwax!" - Robyn Land/WRAT

KILO (#1 Phones)

Top phones at WXRK, WRAT, WJRR, WAAF!

WXRK (K-ROCK) - New York sales jump over 100 units first week after add

KXTE - 27x/week - consistent Top 100 market sales

WAAF - 14x/week - 250 units moved in last two weeks in Boston

KISS - 10x/week - sales increase 500% after one week!

Soundscan up to 2000 pcs/week!

National TV ads on MTV, Howard Stern/E!, Comedy Central, and USA.

45 stations spinning including WXRK, WRCX, WAAF, WKLS, 93X, WXTB, KRXQ, WLZR, WAZU, KISS, WJRR, WMFS, KXTE, WRAT, KRZR, KILO

NEW THIS WEEK AT: WRIF, WNOR, WKLQ, WZAT

Produced by Mark Mendoza and Jay Jay French for Rebellion Music

TVT Records 23 E. 4th St. New York, NY 10003
Tel: 212 979 6410 Fax: 212 979 6489 www.tvtrecords.com



© 1997 TVT Records. It's called commitment - look into it.



**radio found her #1 hit
"four leaf clover."
NOW, they've
discovered
the follow-up.**

"Abra Moore's somebody who's going to be around for a while. She's not some one-hit wonder; and that's something I'm concerned about at this format--that we remain artist-driven, and not song-driven, which has hurt us in the past"

**—Leslie Fram
99X/Atlanta**

**"Don't Feel Like Cryin'
has always been our pick.
It sounds great on the air, and
shows us a musical feel and
style that's different from
Four Leaf Clover,
but every bit as
great! And it's still
unmistakably**

ABRA!!!

**"A ROCK-SOLID
FOLLOW-UP!!
THE GIRL SINGS
LIKE A BIRD!!!"**

**—Jody Denberg
KGSR/Austin**

—KEVIN MANNION KZON/PHOENIX

**"Don't Feel Like Cryin'
is so full of Abra's
personality! You can
touch her, you can feel
her positive energy,
you can see her...
In fact, I see her
devilish smile in my
mind when she sings!"**

—Julie Stoeckel KLLC/San Francisco

"My girlfriend loved *Four Leaf Clover*, so I gave her the full CD. She played *Don't Feel Like Cryin'* back to me, joyous and overwhelmed with its great lyric and fun melody. I instantly loved it too... and we're gonna run with it!!!"

—Kevin Welch KFXD/Boise

abra moore don't feel like cryin'
from her arista austin album *strangest places*

**ARISTA
austin**

© 1997 Arista Records, Inc., a unit of BMG Entertainment Management: Tim Neece Produced by Mitch Watkins Mixed by Jack Joseph Puig www.abramoore.com

World Radio History

KDGE Loses Folger; KZPS' Mixon Exits

Changes in Dallas see modern KDGE PD Joel Folger exiting the station. John Larson, who remains as VP of programming for KDGE and classic rock sister KZPS, will continue to oversee both stations. KZPS night jock Chaz Mixon also exits.

MANAGEMENT/BUSINESS

OM Warren Cosford exits the CHUM Group's Detroit stations, including modern CIMX (89X) and triple-A CIDR (the River). CIDR/89X OM Murray Brookshaw will concentrate on the PD job at 89X with Vinnie Cannova taking an APD role. Canadian MD Wendy Duff is now PD of CIDR. MD Anne DeLisi will have an expanded role, working with Duff.

With Cumulus taking over album WGLF Tallahassee, Fla., its market manager, John Hill (who oversees co-owned R&B, top 40, and AC outlets), will be GM for that station, too. Kim McAllister remains as WGLF's GSM.

Mercury Broadcasting, owner of WUFX/WEDG Buffalo, N.Y., enters into a joint sales agreement with crosstown modern CKEY (the Planet).

PROGRAMMING: LET X = MOSCHITTA

Modern WQXA Harrisburg, Pa., PD John Moschitta is now PD at modern WDXD Pittsburgh, replacing Ali Castellini, who stays on-air.

Triple-A trimulcast KXXP/KXXU/KXXR (Zone) Minneapolis has been granted new calls KZNX/KZNT/KZNR to go with a new image. KXXR, incidentally, migrates down the dial to the newly rekindled active 93X. The new Zone lineup reunites former KREV (Rev 105) morning men Brian Oake and Steve Nelson. Former KEGE (the Edge) middayer Wendy Wilson keeps that role at Zone, Rev refugee Thorn takes afternoons, and former Edge overnigher Dean-na Kelly is in nights.

Here's To Good Trends ...



Album WRCX Chicago afternoon host Lou Brutus has once again commissioned a limited-edition microbrew for his listeners to quaff during Oktoberfest. Says Brutus, "After years of getting listeners drunk on my charm, now I can just get them drunk." Rejected slogans: "A beer should be like a lover: It should go down easy" and "Lou-in-Brau: It's a lot easier to swallow than my show."

Former modern KTBB Houston PD Cruze takes the PD seat at modern WFNX Boston. He starts Nov. 17, replacing Bill Glasser. Cruze was most recently in mornings at modern adult KKPX (the Planet) Houston.

Cromwell Group director of programming Bryan Krysz will exit that post Nov. 30.

Modern KGDE Omaha, Neb., PD Lynn Barstow is named PD at modern KMYZ Tulsa, Okla., replacing Paul Krieger.

Album WRCN Long Island, N.Y., PD Ralph Tortora exits. . . Triple-A WRLT Nashville PD Jessie Scott exits. Reach her at 615-783-0740. She's replaced by Jane Crossman, last PD of WEBK Killington, Vt.

GM Ruth Choate adds PD duties at modern KNSX St. Louis, replacing Jim Atkinson.

Album WCIZ Watertown, N.Y., PD/morning man J.P. Hastings exits to be PD/middays at album WOUR Utica, N.Y. WCIZ APD/MD/afternoon Johnny Keegan moves to mornings and becomes

acting PD. Night jock Marc Isaccs takes afternoons with P/T Eddie Cornell now in nights.

With album WYNF Sarasota, Fla., PD/MD Eric Stevens gone, Jacor transfers Ron Michaels to the station as interim PD/afternoons from nights at album WXTB Tampa, Fla. Back at home, Ricker gets Michaels' night slot, and Max Logan goes to afternoons from the same at modern WDXD Pittsburgh, as Scott Ledger departs.

With modern adult KLLY Bakersfield, Calif., PD Russ Davidson gone, his duties will be split by middayer Mark McKay, now the OM, and afternooner Jason Griffin, who gets the MD gig.

FORMATS: EDGING TO MODERN AC?

Modern WXEG Dayton, Ohio, now a Jacor property, changes musical focus, sanding off the darker edge of modern for a more hit-oriented focus, though PD Jeff Stevens says that Nirvana and Pearl Jam stay in the mix. Meanwhile, P/T Ryan Kriegbaum gets the night shift.

KNNC Austin, Texas, ends its modern simulcast of KROX for classic rock as "the Hawk."

Abilene, Texas, gets a new classic hits outlet, as KROW signs on under Dwayne Alexander, who remains PD of country sister KEAN-FM. Morning man Tim Kelly formerly was P/T on KEAN-FM. Jason Reynolds, from all-sports KEAN-AM, joins for middays. KEAN-FM overnigher Wayne Randall will do afternoons on KROW.

Classic rock WMJB Janesville, Wis., flips to rhythmic top 40 as WKPO (Power 105.9). PD Chris Modell and morning man Matt Miller exit.

AC WEZI Harrisonburg, Va., flips to classic rock as Bob 103.3 under consultant Bill Hennes. Top 40 sister WQPO (Q101) p.m. driver Buzz Berry is now PD/mornings for the new station.

In a world of Alices, meet "Jane." Jacobs Media's Dave Beasing flips top 40 WZSK (the Shark) Ocean City, Md., and Christian WDNO to simulcast modern adult as Jane. Jim McHue, former newsman at rock sister WZBH (the Beach), is PD.

PEOPLE: CARTER REPLACES PARENTEAU ON WBCN

Modern WBCN Boston afternoon vet Mark Parenteau is leaving the shift to explore other opportunities. Evening jock Nik Carter inherits the coveted post, as PD Oedipus embarks on a national search for a new night jock. T&Rs only.

Album WWDC (DC101) Washington, D.C., gives Dave Zyck the lead role in the morning show, replacing Will Pendarvis. Zyck had been doing voice work for the station.

Album KLOL Houston adds the syndicated Lex and Terry show for nights.

P/T Armando Bellmas adds the title APD for programming at modern WNCW Asheville, N.C.

Album KIL0 Colorado Springs, Colo., APD/MD/afternoons Peg Pollard exits. PD Rich Hawk is looking for her replacement.

After a very long search, album KATS Yaki-

Few FCC Changes Seen Under Kennard

by Bill Holland

Insiders expect few major changes at the FCC under new Chairman William E. Kennard, whose appointment was confirmed by the Senate Oct. 29.

Kennard, a Democrat, is expected to be cautious in his approach to the deregulation policies favored by the Republican-dominated Congress. However, observers expect his personal style to be less confrontational than that of outgoing Chairman Reed Hundt, who announced his resignation earlier this year.

Kennard served as the FCC's general counsel for four years. In May, he was named an FCC commissioner by President Clinton to replace departing Commissioner James Quello.

Also confirmed are new FCC Commissioners

Harold Furchtgott-Roth, former chief economist for the House Commerce Committee; Michael Powell, a Justice Department attorney and son of retired Gen. Colin Powell; and Gloria Tristani, who served on the New Mexico Public Service Commission. Commissioner Susan Ness is still serving out her term.

Senate Commerce Committee Chairman Sen. John McCain, R-Ariz., says that "for the first time in history" the commission's majority will be of African-American or Hispanic descent. "This reflects both the inclusiveness we aspire to as a society and the freshness we hope a reconstituted FCC will pursue in its regulatory approach."

Bill Holland is Washington, D.C., bureau chief for Billboard.



PERSONNEL FILE

BY STEVE GRAYBOW

212-536-5361 • sgraybow@billboard.com

Cohen Caps Off Columbia Years

Columbia senior director of alternative promotion Jon Cohen exits. . . Revolution adds Buddy Deal for Southwest regional duties and taps David Jafri, formerly of the label's sales department, to handle artist development and tour marketing.

Former Priority Southeast regional Peggy Miles takes the same territory for V2. . . MCA taps Rudy Provencio for college promotion chores and special projects. . . Former MCA promotion reps Ken Williams and Trish Merello join DreamWorks in Chicago and L.A., respectively.

Seymour Stein's Sire Records Group will be the distributor for Sonic Youth guitarist Thurston Moore's label venture k/e/y records, as well as New York indie Blackbird Recording Co., according to Billboard Bulletin. Blackbird had been distributed by Elektra. . . Moonshine Music establishes a new division, Overamerica, which will promote and organize tours for techno acts.

Look for the Airwalk tour this spring, a joint venture between Airwalk footwear and sports/music marketing company On Board Entertainment. Three alternative bands to be announced will play music venues and snowboard festivals around the country; a winner and guest in each market will be picked to join the tour for a week. . . Metallica's Nov. 11 free concert will take place at Philadelphia's CoreStates Complex parking lot. . . Drummer Bill Berry has left R.E.M. The remaining band members will continue as a trio, utilizing additional musicians for albums and tours.

The first completely new Queen song in six years, "No One But You (Only the Good Die Young)," will be included in the band's upcoming compilation "Queen Rocks." Vocals were handled by Brian May and Roger Taylor, marking the first Queen single since Freddie Mercury's death that doesn't feature either the late singer or a guest vocalist. . . MCA act Live raised more than \$75,000 for LIFEbeat, the T.J. Martell Foundation, AmFar, and the Memorial Sloan-Kettering Brain Cancer Research Center from sales of a limited-edition tour poster and a 25-cent surcharge on tickets.

Museum Pieces?



The Museum of Television and Radio's third Radio Festival kicked off with a gala opening-night party Oct. 27. Representatives from all around the New York radio dial were in attendance, including, from left, WABC's Curtis Sliwa; WNEW's Dave Herman and Dennis Elsas; WOR's John Gambling; WXXY's Adrienne Austen; WCBS-FM's Dan Ingram; WQHT's Lisa G.; CBS Radio Networks' Gil Gross; WCBS-FM's Bill Brown; WQEW's Chuck Leonard; WCBS-FM's Bobby Jay, Don K. Reed, and Dan Daniel; WNEW's Marty Martinez; WAXQ's Maria Milito; former WDBZ talent Abby Bonell; and WABC's Mike Gallagher.

ma, Wash., PD Ron Harris adds morning duties to his repertoire, replacing Dave and Tom.

Triple-A WKZE-FM Sharon, Conn., MD Leslie Ritter exits the post to focus on her band. P.m. driver Andrew DiGiovanni gets MD duties; middayer Michael Wright moves to evenings and is assistant MD. Also, former triple-A WFUV New

York host Ben Soper joins for P/T, as does Tom Camp from nearby WVIP Mount Kisco, N.Y.

With modern WRZX Indianapolis middayer Ace Cosby back on sister album WFBQ, night jock Adam Ritz takes the midday shift.

Classic rock KKLZ Las Vegas gives traffic reporter Kim Kelly her own shift: afternoons.

M Street Format Monitor**All Rock Formats Up In October Tally**

RANK		The M Street FORMAT MONITOR Copyright M Street Corp. 1997	STATION COUNT		
THIS MONTH	LAST MONTH		OCT. '97	SEPT. '97	NET GAIN OR LOSS
1	1	Country	2,498	2,505	-7
2	2	News/Talk	1,111	1,114	-3
3	3	Adult Contemporary	905	917	-12
4	4	Oldies	757	745	12
5	5	Religion (Music)	650	647	3
6	6	Adult Standards	549	545	4
7	7	Spanish	475	474	1
8	8	Religion (Talk)	411	411	0
9	9	Classic Rock/Hits	410	405	5
10	10	Soft AC/Easy Listening	394	394	0
11	11	Top-40/Mainstream/Rhythm	355	355	0
12	12	Mainstream Rock	262	261	1
13	13	Top-40/Adult	257	253	4
14	14	Sports	221	213	8
15	15	R&B Adult/Oldies	179	182	-3
16	16	R&B	169	168	1
17	17	Miscellaneous	162	160	2
18	18	Modern Rock	140	143	-3
19	19	Triple-A	95	94	1
20	20	Jazz	91	92	-1
21	21	Modern AC	66	61	5
22	22	Classical	44	44	0
Total commercial operating stations			10,201	10,183	
Stations off the air			146	150	

M Street Corp., is a Nashville-based provider of radio station information to the radio and music industries. Call 615-865-1525 for more information.

Satisfying Their Need For Creed

Above, album WRIF Detroit APD Dave Wellington, right, was a part of the rock crowd gathered to see the McGathy rock showcase at the 1997 Billboard/Airplay Monitor Radio Seminar. Longpigs, Creed, and Kenny Wayne Shepherd provided the music. After the set, Creed front man Scott Stapp, left, stopped by to meet Wellington. Below, Bill McGathy and members of Creed share a moment with WXTB (98 Rock) Tampa, Fla., OM Brad Hardin. Shown, from left, are Creed's Brian Marshall, Hardin, Stapp, and McGathy.

**CHEET SHEET** BY MARK MARONE

212-536-5051 • mmarone@billboard.com

U.K. Hit Sets Pop Eyes On Olive

Not so many years ago, an electronic keyboard had a limited range of features. You pushed one button for a canned bossa nova beat and another for a simple waltz. Now, with MIDI programming and sampling, the range of possibilities is staggering, and not only in the obvious ways—the electronic keyboard is even threatening to make singer-wanted ads a thing of the past.

For a singer, **Tim Kellett** of British trip-hop outfit **Olive** had to look no further than the keyboard he heard in a friend's band. Having recently left **Simply Red** after a nine-year stint, Kellett agreed to play some gigs with his old college band, **Durutti Column**, and found himself increasingly enamored with a female vocal run through the band's keyboard. The intriguing voice, Kellett found out, belonged to **Ruth-Ann Boyle**, a bar worker who wished to become a nurse. The band's bass player, at his family's request, had taped Boyle and sampled her vocal for the song. Kellett took things from there. "I called her up and said, 'Look, you've got a lovely voice, and it would definitely work with what [Olive is] doing. Why don't you try working on some of these songs?' Luckily she agreed," says Kellett.

With Kellett at the helm, writing songs with keyboardist **Robin Taylor-Firth**, Olive's vision of smooth-sounding trip-hop was realized. Boyle's sweet and dreamy voice, reminiscent of **Every-**



OLIVE

thing But The Girl and the Beautiful South and, at times, **Sade**, has the ingredients for cross-format appeal. After breaking in dance clubs, Olive is being well received at both modern and rhythmic top 40s with the British hit "You're Not Alone."

Set in a sparse, trippy electronic groove, the song was written from the viewpoint of an incessant traveler. "Not that I knew it at the time, but it was probably sub-consciously written because I've been away quite a lot in my life. I've had to leave my wife and kids for what I do," says Kellett, referring to his years of touring with **Simply Red**. "It's a reassurance that they'll still be there when we get back, and then maybe the relationship will have grown after a bit of separation. I was trying to be positive about a thing that can be quite negative, I suppose."

Kellett says Olive's modern electronic pop has different roots than his former band. "Simply Red was very influenced by American black music. [Olive has] a more English sound," he says. "When I write melodies, I don't refer back to that music, although I really like it. I don't feel like it's coming naturally out of me because I'm an English sort of person with quite a classical background." Kellett did share **Simply Red** singer **Mick Hucknall's** affinity for pop tunes with dub/reggae-flavored rhythm tracks, which is the one thing from those days that he says he's incorporated into Olive.

These days with Olive, Kellett is part of a largely British style of music that is making inroads in the U.S. And as the small but burgeoning genre of trip-hop continues to expand, so will its embrace of the technology. "I think most people make records in the same way today; it's all very computer-based with not a lot of playing these days," says Kellett. "Now we get interesting sounds and build things up in the studio." So much for the old days.

RADIO CONCERT MONITOR

DATE	CALL LETTERS	EVENT	SCHEDULED TO APPEAR
Nov. 26	WPLY Philadelphia	FEASTival: Philadelphia Music Night	G. Love & Special Sauce, Huffamoose, Mercy River
Nov. 27	WPLY	FEASTival: Ska Night	Pie Tasters, Save Ferris, Specials
Nov. 29	WPLY	FEASTival: The Big Night	Cure, Love Spit Love, Sneaker Pimps
Dec. 1	WMRQ Hartford, Conn.	Jingle Bell Jam	Everclear, K's Choice, Longpigs, Veruca Salt
Dec. 4	KOME San Jose, Calif.	Almost Acoustic Christmas	TBA
Dec. 6	KBBT Portland, Ore.	2nd Acoustic Christmas Show	Devlins, dog's eye view, Sarah McLachlan, Abra Moore
Dec. 9	KNRK Portland, Ore.	Third Annual Snowjob	Cure, Everclear, Ben Harper, Save Ferris

To include your station's concert information in **Rock Concert Monitor**, call **Marc Schiffman** at 212-536-5065, fax 212-536-5286, or E-mail mschiffman@billboard.com

EDITOR IN CHIEF: HESTON HOSTEN
 EDITOR: SEAN ROSS
 MANAGING EDITOR: MARC SCHIFFMAN
 MAINSTREAM ROCK/TRIPLE A CHART MANAGER: ANTHONY COLOMBO
 MODERN ROCK CHART MANAGER: MARK MARONE
 MODERN ADULT CHART MANAGER: STEVE GRAYBOW
 WRITER/REPORTER: DANA HALL
 CHART PRODUCTION MANAGER: MICHAEL CUSSON
 ASST. CHART PRODUCTION MANAGER: ALEX VITOUJIS
 EDITORIAL PRODUCTION MANAGERS: BARRY BISHIN, MARCIA REPINSKI
 EDITORIAL PRODUCTION: MADELINE CARROLL, SUSAN CHICOLA,
 MARC GIAQUINTO, SARAH JOHNSON, MARIA MANLICIC
 COPY EDITOR: CARL ROSEN
 ADVERTISING PRODUCTION MANAGER: LYDIA MIKULKO
 ASSOC. ADVERTISING PRODUCTION MANAGER: CINDIE WEISS
 ADVERTISING ART DIRECTOR: RAY CARLSON
 ADVERTISING PRODUCTION ARTIST: SHIRA HALFON

GENERAL MANAGER: JON GUYNN
 ACCOUNT MANAGER: JEFF SOMERSTEIN
 ADVERTISING SERVICES MANAGER: ALYSE ZIGMAN
 SALES ASSISTANTS: EVELYN ASZODI, ERICA BENGTONSON

EDITORIAL ADVISER: TIMOTHY WHITE
 PRODUCTION DIRECTOR: MARIE GOMBERT
 DIRECTOR OF MARKETING: ELISSA TOMASETTI
 CIRCULATION DIRECTOR: JEANNE JAMIN



PRESIDENT: HOWARD LANDER
 SENIOR VP/GENERAL COUNSEL: GEORGINA CHALLIS
 VICE PRESIDENTS: KAREN OERTLEY, ADAM WHITE
 DIRECTOR OF STRATEGIC DEVELOPMENT: KEN SCHLAGER
 BUSINESS MANAGER: JOELLEN SOMMER

©1997 BPI Communications
 1515 Broadway, New York, NY 10036 212-764-7300
 For subscriptions call: 800-722-2346

Airplay Monitor reporting panels are based solely on a station's musical content.

Classic Rock Hits Record Heights, Modern Flat, According To National Arbs

Continued from page 1

the format its best number in that cell since spring '93. In 35-64, the format was up 4.4-4.8, its best number there since spring '92.

And, by the way, top 40 scored those adult rebounds despite the fact that there were three rap records that charted this summer at mainstream top 40, a format that hasn't made room for more than one or two such tracks since the hip-hop backlash of the early/mid-'90s. All of which suggests that when the right hip-hop track is part of a balanced diet, something top 40 excelled at this summer for the first time in years, adults don't find "Men In Black" so, er, alienating.

The strength of current hip-hop product, and its increased presence at R&B, also helped that format overall (including mainstream and adult outlets) to its best-ever numbers. Not all the news was good for R&B. It got less of a midday boost and more of a night hit than last summer, but it also went on to record numbers with teens (24.0-25.5), in 18-34 (14.3-14.8), and in 35-64 (8.8-9.0).

Two program notes on R&B's rise: First, it probably reflects, at least in part, the redeployment of several major-market crossover outlets, most notably KPWR [Power 106] Los Angeles and KMEL San Francisco, to the mainstream R&B column following their continued evolution over the past year. Second, even adult R&B outlets [aka urban ACs] were up a tenth in middays with the kids out of school, again suggesting that listeners use adult R&B stations as a second R&B button, not as an alternate format choice.)

AC: WHICH ADULTS ARE LEAVING?

Adult contemporary traditionally takes a hit in summer when the teen/youth format phenomenon drives its midday numbers down. This summer's two-tenths of a share drop was less noticeable than last year's half-share decline. And while the format was down in middays (17.3-16.7), it was off more last year (17.2-16.3).

As AC becomes more contemporary and, perhaps, less adult, it continues to see erosion at the upper end, similar to what country experienced immediately after the peak years of the young country movement. AC was off most sharply in 25-54 (17.3-17.0) and 35-64 (16.6-16.3). It was off a tenth in 18-34 and with teens. That might lead you to believe that not every 25-54 listener is sanguine about some of those surprisingly edgy modern crossovers, but you could as easily conclude that top 40 is reclaiming some of its adults, who went to AC either by choice or—in

markets that had no top 40 for many years—by necessity.

While the growth of the adult modern format over the past year has been noticeable in AC's young-end numbers, it's hard to tell exactly who's being affected most by it. Modern rock stations were flat this summer, celebrating their first full year at a 4.1 share. Modern was down sharply with teens (10.7-9.9) but up or stable in 18-34 (7.6-7.7), in 25-54 (3.7-3.8), and with 18-plus women (2.6-2.8). So while modern AC may be stunting modern rock's growth, it's hardly decimating modern rock in the demos that one would expect to be most vulnerable to modern AC.

There are a couple of possible implications here. One is that the success of the singer/songwriter acts may be driving adults not just to modern AC but to modern rock. As for the teens, maybe they're the ones gravitating to modern AC, since it's so close to top 40 these days. (Or maybe some of the more rock-oriented younger demos objected to the somewhat less guitar-driven feel of the format.)

While modern rock has been flat for the last year, it began the fall book with several highly publicized format changes (or "modifications") that sent several stations back to (or at least toward) the mainstream rock camp. That's the only potential encouragement for album rock stations, which again were off slightly after a spring rebound. The format is also under a 10 share with 18-plus men (10.0-9.7) for only the second time in recent memory. It also had upper-end losses (8.6-8.3 in 25-54; 5.2-5.0 in 35-54).

WHERE CLASSIC ROCK LIVES

A year ago, many people expected modern to become the new mainstream rock format, with classic rock to become a dwindling niche. Surprise! Besides a record 12-plus share, classic rock had its best-ever numbers in 25-54 (6.5-6.9) and 35-64 (5.2-5.6), giving classic its biggest-ever lead on mainstream rock in that demo. Classic rock was also up sharply in all dayparts.

Country stayed flat in all dayparts except mornings, where it was up 10.4-10.5. This summer found country with a very downtempo music mix, but it's hard to see a consistent demo pattern as a result. Teens were up (6.7-7.0), 18-34 went 9.6-9.5, 25-54 was up 10.7-10.8, and 35-64—the demo where country has suffered the most erosion in recent years—spent its third straight book at an 11.9.

MONITOR PROFILE

Rock 105 Gets The Led Out, Again; Pays Moore Attention To Its Heritage

When David Moore became PD of heritage rocker WFYV (Rock 105) Jacksonville, Fla., that station was in transition. Lex Staley had resigned his PD duties, and his Lex and Terry morning show moved from Jacksonville to Dallas, where it's now simulcasting back to WFYV from KTXQ (Q102).

A year later, WFYV has survived its period of flux, up 8.6-8.7 12-plus in the summer Arbitrons. And Moore, who was a classic rock veteran at WOCT Baltimore, WGFX Nashville, and others before a brief detour to country radio, says the music has stabilized, too.

WFYV "was playing more currents and was a little more newer and current than it needed to be," he says. "I took the station to a more classic base. It's a Van Halen, AC/DC, Led Zeppelin, Pink Floyd, Lynyrd Skynyrd station. It's hard, but it's familiar. It's fairly classic leaning."

New music from Sammy Hagar, AC/DC, and Ozzy Osbourne are fair game, as is "the occa-

and Jaguars member. "From our ratings and what research shows, people know they're gone and are no longer local, but they don't care."

And unlike other syndicated shows that may have never set foot in a host market, "the great thing is that Lex is the former [WFYV] PD and had success with it, so he has a good sense of what's needed," says Moore. "It's not been a problem at all. It's a big show, and they know what they're doing. Even when they do things I don't like, there are times when I have to trust their instincts. They're right more than not."

Promotionally, WFYV is giving away \$10,000 when it plays its 2-millionth song. "This money giveaway is an experiment," he says. "I'm not sure that contesting is the answer, unless it has a lifestyle tie-in or entertainment value." But Moore likes that the contest ties in with WFYV's heritage and reinforces the music position.

He also likes how it can get people talking about other elements of the station besides Lex and Terry. "One challenge, and I think a lot of Howard Stern stations know this, is when your morning show can get so huge that it obscures the rest of the station. That hasn't happened with Rock 105," says Moore.

Next up is a rock memorabilia auction to benefit the Nielsen Organ Transplant Foundation. afternoon jock Rick Tracy has a liver transplant himself, and, Moore notes, the charity aspect provides good balance. Rock 105 "has an abrasive morning show. We talk a lot about breasts and beer here. It's nice to have something to counteract that a little bit." The event will feature a free show from Mighty Joe Plum. Other promotions find them tying in with the Jaguars—giving away tickets to each home game and broadcasting from most of them. "The market doesn't have a decent amphitheater, so we don't get a lot of concerts, but when we do get concerts, we make a big deal of it, do the afternoon show out there live," and maintain a street presence.

Across the street, Moore sees modern WPLA as struggling. "With the advent of modern AC, a lot of alternative stations are scratching their heads," he says. "They're not left with a lot of wiggle room... if they've got a rock station on one end and a modern adult on the other."

The squeeze players in Jacksonville are WFYV and its top 40 sister, WAPE, which, Moore says, "covers the modern adult territory and is filling the void of the modern AC." That leaves WPLA "fighting a couple of battles. It's pretty tough to compete with us in terms of our morning show, and it's pretty tough to compete with WAPE and the strength of that station." And Moore thinks it's only a matter of time before someone else in the market discovers modern adult. He sees enough weak stations that "someone will do something in next six to eight months," he says. "If that happens, WPLA is going to be hurt."

On the other end of the potential heritage rock squeeze play lies an Arrow station (WWRR) and even WTLK, which has added classic rock on weekends. Moore calls WWRR "musically all over the road," going from Naked Eyes to the Rolling Stones, but, he adds, it has an audience. "There could be people in our audience who are here for Lex and Terry [who migrate to Arrow because] we're too hard for them in the rest of the day."

"Any station this big has a target on its back," he says. "It's going to be tough for anyone to beat us with our morning show. They're certainly going to have to do it on a song-by-song basis, and that's going to be tough, too. Anyone who takes us on, it's going to be rough. The flanker attacks we've had, luckily, have been a little misguided." **MARC SCHIFFMAN**



David Moore
Program Director
WFYV Jacksonville

'Anyone who takes us on, it's going to be rough'

sional alternative hit, like Tonic or matchbox 20. But they have to be rock songs and palatable. There are times when that can be a difficult call to make... We can be hard, but as soon as it seems to become at all alternative, that seems to be a problem. I'm not even sure what the dividing line is."

Here's a sample hour on WFYV: Led Zeppelin, "Stairway To Heaven"; Jackyl, "Locked And Loaded"; Pink Floyd, "On The Turning Away"; Jethro Tull, "Skating Away (On The Thin Ice Of A New Day)"; Queensryche, "Sign Of The Times"; ZZ Top, "La Grange"; Rush, "Limelight"; Live, "All Over You"; Steppenwolf, "Magic Carpet Ride"; and Def Leppard, "Foolin'."

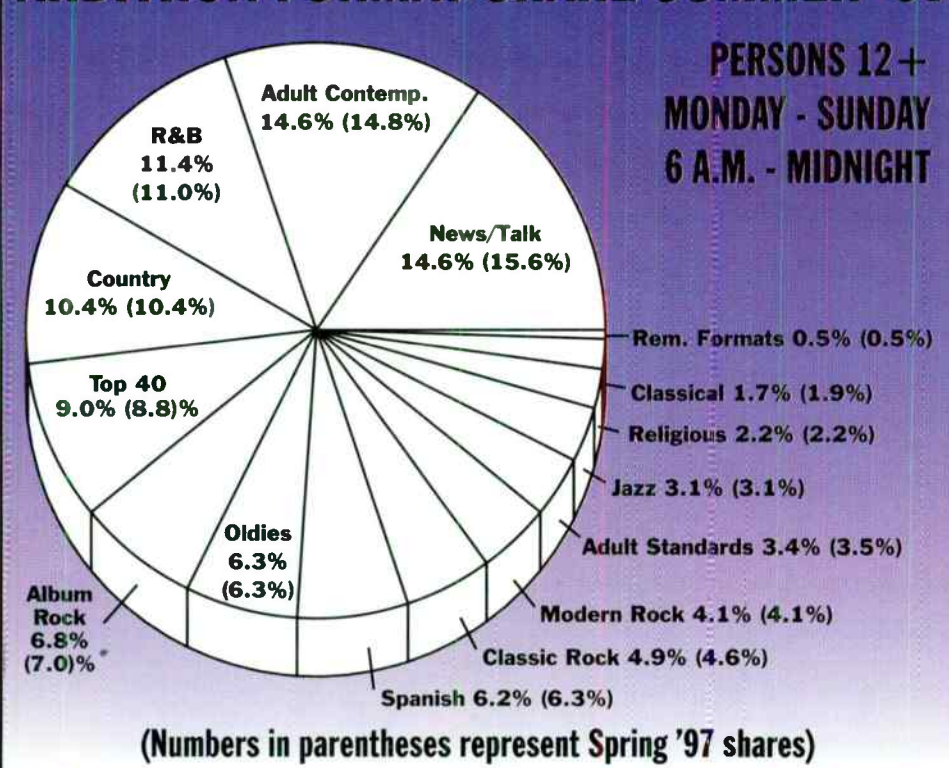
With the music in place, Moore sought to plug Rock 105 in to its heritage. That meant bringing back such former benchmarks as "Twofer Tuesday," "Get The Led Out," and "Southern Fix At Six." To reinforce its music position, he says, "we paid more attention to weekend programming and highlighting our big artists, like AC/DC."

Since his arrival in Jacksonville, one of the biggest changes in the market was the launch of hot talk FM WTLK, which features market morning legend Greaseman and Don and Mike. "I was a little concerned that the Greaseman was coming back in the market... but he hasn't made an impact at all," says Moore.

What has had an impact on the station? "A big part of our success is that we have a great morning show," he says. The thought of syndicated local heroes Lex and Terry back into the market had caused some nail-biting early on, but Moore happily reports that the show is enjoying its best numbers ever, leading in 25-54, with a 2-1 ratio over the No. 2 morning show.

"We were worried that the local angle would be lost," he says. "We've been able to combat that with a lot of appearances" and by maintaining such local contributors as a sportscaster

ARBITRON FORMAT SHARE SUMMER '97



GREATEST GAINERS

Strongest Increase In Airplay This Week

MAINSTREAM ROCK

INCREASE
IN PLAYS

LED ZEPPELIN • <i>The Girl I Love</i> (ATLANTIC)	+602
WRXC +22, KILQ +21, KCAL +21, WMMR +20, KUFO +18, WONE +18, WZMT +17, WTPA +17, KRZZ +16, WRXL +16	
SOUNDGARDEN • <i>Bleed Together</i> (A&M)	+237
WRXL +14, WKLQ +14, KBPI +11, KUPD +10, WXTB +9, KEZO +9, WRQC +8, KUFO +8, KLBJ +8, WNOR +8	
JANE'S ADDICTION • <i>So What!</i> (WARNER BROS.)	+150
WMFS +16, KBPI +13, WKLQ +10, WZAT +9, WZTA +9, WARQ +8, WSTZ +8, KILQ +7, WWDC +7, KRAD +6	
AC/DC • <i>Dirty Eyes</i> (EASTWEST/EEG)	+136
WIXV +10, KTUX +10, WTFX +9, KUPD +9, WDHA +8, KFRQ +8, WIOT +8, KEZO +8, KOMP +8, KRAB +8	
OZZY OSBOURNE • <i>Back On Earth</i> (EPIC)	+136
KRAB +18, KFRQ +15, WVRK +11, WDHA +10, WZZO +9, WXRC +9, WPLR +9, WLZR +9, WZTA +8, WRDU +6	
BLACK LAB • <i>Wash It Away</i> (DGC/GEFFEN)	+99
KXUS +10, WZTA +8, WEBN +8, KEGL +8, KMBY +7, WAPL +7, KRXQ +7, KUFO +6, WRCX +6, KRZR +6	
TOOL • <i>Forty Six & 2</i> (FREEWORLD)	+98
KNCN +9, WTFX +8, WSTZ +8, WJRR +8, WZMT +7, KUFO +7, KRXQ +7, WVRK +6, KILQ +6, KTUX +6	
JOHN MELLENCAMP • <i>Without Expression</i> (MERCURY)	+94
WONE +12, KQRS +11, WBAB +10, WKLC +9, WFBQ +9, KEZO +7, KMOD +7, WZZO +6, KRZZ +6, WKQQ +6	
MATCHBOX 20 • <i>3 AM</i> (LAVA/ATLANTIC)	+84
WONE +19, WZZO +13, KEZO +10, WKLS +10, WARQ +7, WCKW +7, WMMR +7, KTYD +5, WZTA +5, KUFO +5	
SISTER HAZEL • <i>Happy</i> (UNIVERSAL)	+72
KEZO +12, WARQ +11, KQRS +10, WSTZ +9, WBAB +7, WAFX +6, WEZX +6, KRAD +5, KFRQ +3, WKLQ +3	

MODERN ROCK

INCREASE
IN PLAYS

THIRD EYE BLIND • <i>How's It Going To Be</i> (ELEKTRA/EEG)	+350
WNNX +24, KTbz +20, WXEG +19, WLIR +18, KTEG +17, WRXQ +17, KAEP +15, WQXA +15, KPNT +14, KZNX +13	
MARCY PLAYGROUND • <i>Sex & Candy</i> (MAMMOTH/CAPITOL)	+274
KCXX +22, KNDD +21, WKRL +14, WENZ +14, WPBZ +13, KTOZ +11, KKND +10, KFMA +10, KNRK +10, WXDX +9	
JANE'S ADDICTION • <i>So What!</i> (WARNER BROS.)	+260
CIMX +29, KTbz +17, WROX +16, KJEE +14, CFNY +13, XHRM +13, KFTE +12, WPLA +12, KTEG +12, WBTZ +11	
SOUNDGARDEN • <i>Bleed Together</i> (A&M)	+234
WBTZ +21, KLZR +17, KNRX +15, WRXQ +13, KJEE +12, WRZX +12, WBZU +11, WPBZ +11, KICT +11, WBRU +11	
BUSH • <i>Mouth</i> (TRAUMA/INTERSCOPE/HOLLYWOOD)	+197
WXNR +22, WCYY +22, KNRK +14, KTOZ +13, KCXX +12, KLZR +12, KMYZ +11, WKDF +11, KJEE +10, WPLA +10	
SELF • <i>Kiddies</i> (SPONGEBATH/DREAMWORKS)	+193
KFRR +23, KNDD +19, KITS +19, KDGE +16, KCXX +11, KTCL +11, KTOZ +10, KROQ +9, KNRK +8, WBCN +7	
DAYS OF THE NEW • <i>Touch, Peel And Stand</i> (OUTPOST/GEFFEN)	+190
KMYZ +16, WMRQ +14, WBRU +13, KFRR +11, KWOD +11, KOME +11, KPOI +10, WBZU +9, KPNT +9, KNDD +9	
SPACE MONKEYS • <i>Sugar Cane</i> (FACTORY/CHINGON/INTERSCOPE)	+157
WBRU +20, WXEG +19, WKDF +15, WMRQ +14, KJEE +11, WCYY +11, WEND +11, KLZR +8, CFNY +7, KROX +6	
SARAH MCLACHLAN • <i>Sweet Surrender</i> (ARISTA)	+132
WPLY +12, WHFS +12, KTOZ +10, KFTE +9, WXDX +9, KENZ +8, KROX +8, KTEG +8, WRXQ +8, WCYY +7	
BECK • <i>Deadweight</i> (LONDON/ISLAND)	+115
KZON +18, KROQ +15, WKQX +13, KNRK +10, WFNX +9, WCYY +8, KEDJ +8, CIMX +8, WWCD +8, WKRL +6	

VIDEO PLAYLISTS

MOST PLAYED ROCK TRACKS



	TW	LW
1 Sugar Ray, Fly	32	37
2 Matchbox 20, Push	28	36
3 Sarah McLachlan, Building A Mystery	28	34
4 Paula Cole, I Don't Want To Wait	25	28
5 Jewel, Foolish Games	25	30
6 Smash Mouth, Walkin' On The Sun	23	9
7 The Rolling Stones, Anybody Seen My Baby?	23	25
8 Fleetwood Mac, Silver Springs	21	30
9 Third Eye Blind, Semi-Charmed Life	21	23
10 Fiona Apple, Criminal	15	16
11 Elton John, Something About The Way You Look Tonight	14	15
12 Sheryl Crow, Home	13	15
13 Jamiroquai, Alright	13	15
14 Billy Joel, Hey Girl	13	15
15 Savage Garden, I Want You	10	10
16 Duncan Sheik, Barely Breathing	9	11
17 No Doubt, Don't Speak	9	10
18 The Wallflowers, One Headlight	9	11
19 The Cardigans, Lovefool	9	7
20 U2, Please	8	7
21 Duran Duran, Electric Barbarella	8	10
22 Shawn Colvin, You And The Mona Lisa	7	9
23 The Wallflowers, Three Marlenas	7	7
24 Elton John, I'm Still Standing	6	5
25 Jewel, You Were Meant For Me	6	8
26 Sting, I'm So Happy I Can't Stop Crying	6	5
27 Shawn Colvin, Sunny Came Home	6	6
28 Paula Cole, Where Have All The Cowboys Gone?	6	7
29 Kami Lyle, Polka Dots	6	9
30 The Verve Pipe, The Freshmen	5	10



	TW	LW
1 The Rolling Stones, Anybody Seen My Baby?	22	27
2 Radiohead, Karma Police	20	24
3 Chumbawamba, Tubthumping	20	24
4 The Verve, Bitter Sweet Symphony	19	24
5 David Bowie, I'm Afraid Of Americans	18	0
6 Days Of The New, Touch, Peel And Stand	18	11
7 Goldfinger, This Lonely Place	17	4
8 Oasis, Don't Go Away	17	16
9 Green Day, Hitchin' A Ride	17	17
10 Beck, Deadweight	17	3
11 Smash Mouth, Walkin' On The Sun	13	28
12 Imani Coppola, Legend Of A Cowgirl	12	13
13 Marilyn Manson & Sneaker Pimps, Long Hard Road Out Of Hell	12	10
14 Sublime, Doin' Time	11	10
15 Everclear, Everything To Everyone	11	9
16 The Wallflowers, Three Marlenas	9	14
17 Bush, Mouth	9	13
18 The Sundays, Summertime	9	12
19 Cornershop, Brimful Of Asha	9	8
20 The Offspring, I Choose	8	8
21 Death In Vegas, Dirt	8	11
22 Blink 182, Dammitt (Growing Up)	7	6
23 MxPx, Chick Magnet	6	6
24 Red Hot Chili Peppers, Under The Bridge	5	2
25 Jewel, You Were Meant For Me	4	1
26 Matchbox 20, 3 Am	4	4
27 The Mighty Mighty Bosstones, The Impression That I Get	4	4
28 Jimmie's Chicken Shack, High	4	5
29 Guns N' Roses, Welcome To The Jungle	4	3
30 Nirvana, Smells Like Teen Spirit	3	1
31 Pearl Jam, Jeremy	3	1
32 Beck, Loser	3	2
33 Beastie Boys, Sabotage	3	5
34 The Smashing Pumpkins, Tonight, Tonight	3	0
35 Jewel, Foolish Games	3	4
36 Beck, Where It's At	3	1
37 Dave Matthews Band, Crash Into Me	3	2
38 Sublime, What I Got	3	4
39 Beck, The New Pollution	3	0
40 Matchbox 20, Push	3	3

TRIPLE-A

INCREASE
IN PLAYS

LISA LOEB • <i>I Do</i> (GEFFEN)	+44
WXLE +10, KXPT +10, WBOS +9, WKOC +5, WVRV +4, WHPT +4, WTTT +3, WXRV +3, WJBX +2, KFOG +2	
MATCHBOX 20 • <i>3 AM</i> (LAVA/ATLANTIC)	+43
CIDR +10, WJBX +9, KBCO +9, KKZN +5, WKOC +5, WDOD +4, WRLT +4, WHPT +2, WXLE +1, KXPT +1	
SISTER HAZEL • <i>Happy</i> (UNIVERSAL)	+38
WJBX +18, WTTT +11, WDOD +3, WVRV +3, WXLE +2, WBOS +2, WHPT +1	
B.B. KING WITH TRACY CHAPMAN • <i>The Thrill Is Gone</i> (MCA)	+31
CIDR +10, KXPT +6, KMTT +5, KKZN +2, KPIG +2, WNCS +2, KINK +1, WHPT +1, WXRV +1, WXRT +1	
BEHAN JOHNSON • <i>World Keeps Spinning</i> (RCA)	+29
WXLE +13, WTTT +8, WKOC +8, CIDR +5, WNCS +5, KTCZ +3, WBOS +2, WMAX +1, WHPT +1	
SHERYL CROW • <i>Tomorrow Never Dies</i> (A&M)	+29
WMAX +20, KFOG +3, WXRT +3, KMTT +1, WHPT +1, WXRV +1	
THE ROLLING STONES • <i>Saint Of Me</i> (VIRGIN)	+24
WMAX +13, CIDR +7, KKZN +5, KBCO +3, KINK +2, WTTT +2, WKOC +2, WNCS +2, WXRV +2, KXPT +1	
THE VERVE • <i>Bitter Sweet Symphony</i> (VC/HUT/VIRGIN)	+24
WRLT +11, CIDR +6, WNCS +3, WBOS +3, WJBX +1, WXLE +1, WXRV +1	
SARAH MCLACHLAN • <i>Sweet Surrender</i> (ARISTA)	+21
WJBX +13, WRLT +5, WKOC +5, WXLE +3, WTTT +3, KTCZ +3, WXRT +2, KKZN +1, WMAX +1, CIDR +1	
THE CURE • <i>Wrong Number</i> (ELEKTRA/EEG)	+20
WJBX +18, WRLT +10, WDOD +1	



A Zeppelin song like this was unheard of...until now

LED ZEPPELIN



THE GIRL I LOVE

Recorded live June 16, 1969

One of two soon-to-be-classic songs
never before on any studio album

From the highly-anticipated

BBC

SESSIONS

Over 2½ hours of live classics
Compiled and mastered by Jimmy Page



IN STORES NOVEMBER 18



www.atlantic-records.com

THE ATLANTIC GROUP ©1997 Atlantic Recording Corp. A Time Warner Company.

World Radio History

POWER PLAYLISTS

For Week Ending November 2, 1997



Radio Data Systems logo and text: Playlists supplied by Broadcast Data Systems' Radio Data Service...

Main content table with 16 columns representing radio stations (KBPI, WLZR, WBZX, WJRR, WRDU, KQRC, WBAB, KISS, KUPD, WIMZ, WPMYX, KIOZ, WCCC, KUFO, WDHA, KRXX, WROQ, KATT, KDKB, WLWQ, WNOR, WCKW, WTFX, WTUE) and their respective power playlists.



POWER PLAYLISTS

For Week Ending November 2, 1997



Playlists supplied by Broadcast Data Systems' Radio Track service. Songs ranked by number of plays in monitored week. Playlists are listed in order of TSA weekly cumes, beginning with the highest-cumming station. Cumes are updated twice weekly following the release of the Spring and Fall Arbitron surveys. The number of stations shown each week varies depending upon space.

Grid of 48 radio station playlists (e.g., WEGR, WCMF, WIOT, WFYV, KLAQ, WKLQ, WPLR, WXRA, WBLM, KMJX, KEZO, WZZO, WAPL, KCAL, WROV, KMOD, KLBK, WKQQ, KBER, WTPA, WAQX, KLPX, WZMT, WRXL) with columns for station name, PD, MD, and song lists with TW and LW ratings.



SONG ACTIVITY REPORTS



For Week Ending November 2, 1997

Detailed song tracking information for the last 3 weeks for all songs showing increased play this week. Total plays and gain do not include video play. Markets listed in order of population.

Table with 12 columns: AC/DC, BLACK LAB, FAITH NO MORE, SAMMY HAGAR, THE JASON BONHAM BAND. Each column contains song titles, station codes, and play counts for various markets.

Table with 12 columns: KISS, KULA SHAKER, LED ZEPPELIN, LIVE, MATCHBOX 20. Each column contains song titles, station codes, and play counts for various markets.

SONG ACTIVITY REPORTS

For Week Ending November 2, 1997



Detailed song tracking information for the last 3 weeks for all songs showing increased play this week. Total plays and gain do not include video play. Markets listed in order of population.

Main table containing song activity reports for artists like MEGADETH, OASIS, OZZY OSBOURNE, THE ROLLING STONES, KENNY WAYNE SHEPHERD BAND, SOUNDGARDEN, TOOL, THE WALLFLOWERS, and YES. Each entry includes station codes, play counts, and chart positions.

POWER PLAYLISTS



AIRPLAY Monitor For Week Ending November 2, 1997

Playlists compiled by Broadcast Data Systems' Radio Track service...

KOME San Jose PD: Jay Taylor Table with 30 rows of song and chart data.

KTBZ Houston PD: Am Trapp MD: David Sadoff Table with 30 rows of song and chart data.

CIMX Detroit Prgm. Mngr.: Murray Brookshaw PD/MD: Vince Cannova Table with 30 rows of song and chart data.

KPNT St. Louis PD: Allan Fee MD: Adam Potts Table with 30 rows of song and chart data.

WXDX Pittsburgh PD: Ali Castellini MD: Lenny Diana Table with 30 rows of song and chart data.

KEDJ Phoenix PD: Shellie Hart APD/MD: Chris Patyk Table with 30 rows of song and chart data.

WLIR Long Island PD: Jeff Levine Mus. Coor.: Lynda Lopez Table with 30 rows of song and chart data.

XTRA San Diego PD: Bryan Schock MD: Chris Muckley Table with 30 rows of song and chart data.

WMRQ Hartford PD: Jay Beau Jones MD: Dave Hill Table with 30 rows of song and chart data.

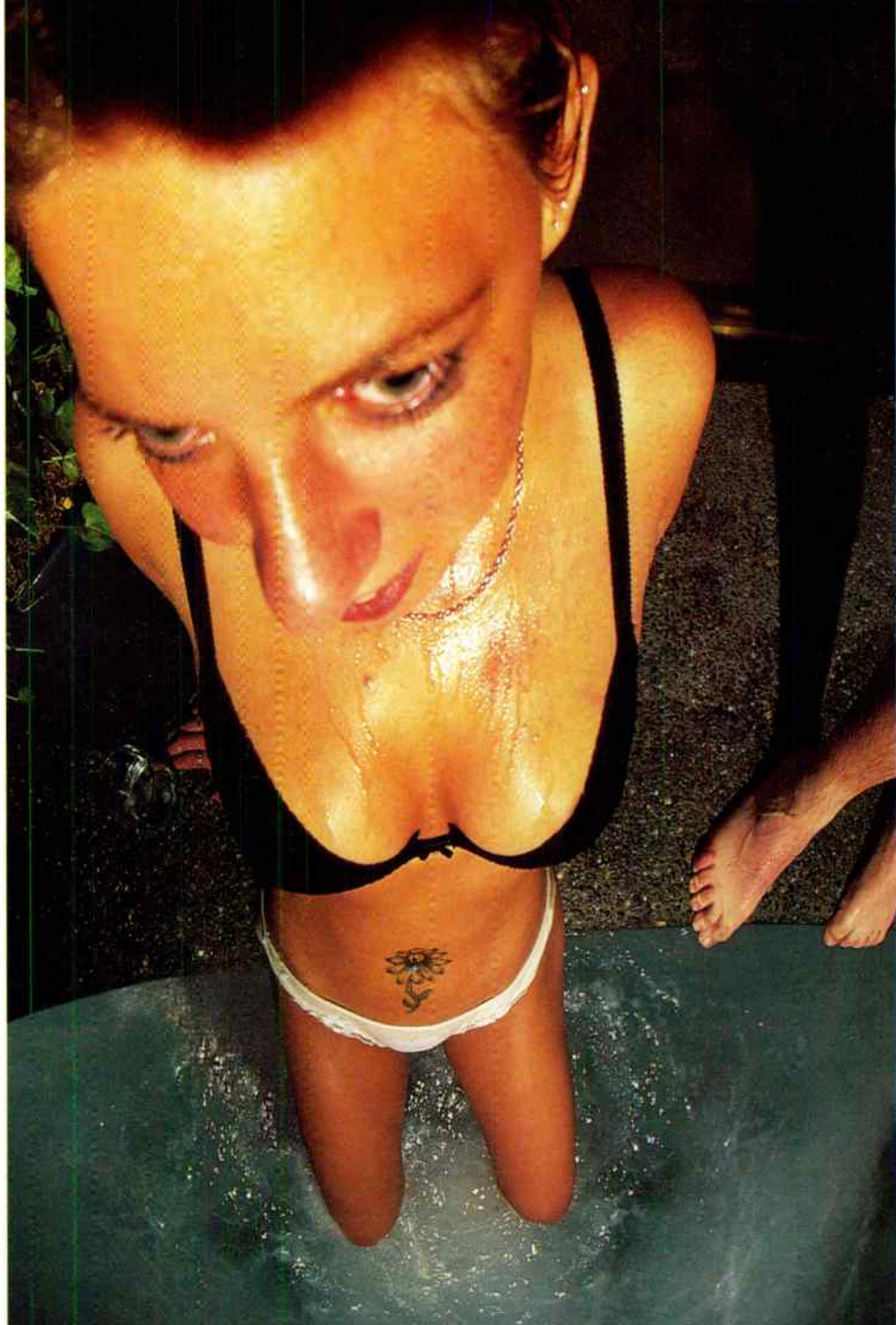
WENZ Cleveland PD/MD: Sean Robertson Table with 30 rows of song and chart data.

WKDF Nashville PD: Kidd Redd MD: Sheri Sexton Table with 30 rows of song and chart data.

KXPK Denver PD: Gary Schoenwetter APD/MD: Eric Schmidt Table with 30 rows of song and chart data.

deftones around the fur

"my own summer" (shove it) the first single



ALBUM DEBUTS AT: Best Buy #4, Musicland #27, Wherehouse #14, Newbury Comics #3, National Record Mart #10, Transworld #34, Zia #1, Camelot #26, The Wall #29, Peaches #19, Heavy Metal Shop #1, Vintage Vinyl #1, Tower Mesa #1, Tower San Diego #1, Tower Sacramento #1

produced by terry dale and deftones. career direction: warren entner and john vassiliou for w.e.m. www.deftones.com. ©1997 Maverick Recording Company.

POWER PLAYLISTS

For Week Ending November 2, 1997



Playlists supplied by Broadcast Data Systems... Radio Track service...

Grid of 48 radio station playlists (WRZZ, KWOD, KZON, XHRM, WQBK, WEND, WQXA, WLUM, WNVE, WFNX, KZNZ, WBRU, WEDG, KCCX, WGRD, KNRK, KENZ, KXRK, WPBZ, WAQZ, WROX, KTCL, KXTE, KNRX) with columns for station name, PD, MD, and song lists with airplay counts.



Aphex Twin. Come To Daddy.

31001.

Sire Records.

**Trade Advertisement.
Airplay Monitor.
Full Page; Black & White.**



120 Minutes



Amp




12 Angry Viewers WINNER



Heavy

**11 Debut Billboard
New Artist Chart**

 
www.warp-net.com
© 1997 Sire Records.

THE NIGHT'S GOING TO BE ANYTHING BUT SILENT.

A VERY SPECIAL CHRISTMAS 3



16 Christmas Classics

Mary J. Blige ■ Blues Traveler ■ Tracy Chapman
Chris Cornell w/ Eleven ■ Sheryl Crow ■ Enya
Hootie & The Blowfish ■ Jonny Lang ■ Dave Matthews
Natalie Merchant ■ No Doubt ■ Rev Run and
The Christmas All Stars featuring Mase, Puff Daddy,
Snoop Doggy Dogg, Salt n' Pepa, Onyx, and Keith Murray
The Smashing Pumpkins ■ Patti Smith
Sting ■ Steve Winwood

Special thanks to the AFM for their contribution.

Now available at all record stores.

www.veryspecial.org



AFL-CIO COMPANY

POWER PLAYLISTS

AIRPLAY
Monitor

For Week Ending
November 2, 1997

WDGE

Providence PD: Brent Petersen
MD: John Allers

	TW	LW
1 Green Day, Hitchin' A Ride	38	39
2 Everclear, Everything To Everyone	37	38
3 Our Lady Peace, Superman's Dead	37	37
4 Days Of The New, Touch, Peel And Stand	36	39
5 Oasis, Don't Go Away	36	32
6 Foo Fighters, Everlong	35	36
7 Chumbawamba, Tubthumping	33	21
8 Matchbox 20, 3 AM	22	17
9 The Refreshments, Good Year	22	19
10 Tonic, Soldier's Daughter	21	19
11 Megadeth, Almost Honest	21	19
12 Creed, My Own Prison	21	16
13 Jimmie's Chicken Shack, High	20	19
14 Bush, Mouth	20	21
15 Live, Rattlesnake	20	20
16 Barenaked Ladies, Brian Wilson	20	19
17 Letters To Cleo, Anchor	19	18
18 Smash Mouth, Walkin' On The Sun	18	39
19 The Wallflowers, Three Marlenas	18	21
20 Soundgarden, Bleed Together	18	13
21 Jane's Addiction, So What!	17	21
22 AC/DC, Dirty Eyes	15	0
23 Faith No More, Ashes To Ashes	14	0
24 Tool, Forty Six & 2	14	1
25 Goldfinger, This Lonely Place	14	1
26 311, What Was I Thinking	13	13
27 Limp Bizkit, Counterfeit	12	10
28 Rage Against The Machine, The Ghost Of	11	0
29 Seven Mary Three, Cumbersome	11	12
30 Veruca Salt, Volcano Girls	11	8

KMYZ

Tulsa PD: Paul Krieglger
MD: Greg Kacsack

	TW	LW
1 Everclear, Everything To Everyone	37	24
2 Days Of The New, Touch, Peel And Stand	37	21
3 Chumbawamba, Tubthumping	35	23
4 Foo Fighters, Everlong	35	21
5 Bush, Mouth	33	22
6 Sublime, Don't Time	32	16
7 Smash Mouth, Walkin' On The Sun	31	28
8 Seven Mary Three, Lucky	25	25
9 Oasis, Don't Go Away	23	11
10 Live, Rattlesnake	17	12
11 Green Day, Hitchin' A Ride	17	16
12 Third Eye Blind, How's It Going To Be	17	9
13 Mighty Mighty Bosstones, The Rascal King	16	10
14 Matchbox 20, 3 AM	16	13
15 Jars Of Clay, Crazy Times	15	10
16 Save Ferris, Come On Eileen	15	8
17 Goldfinger, This Lonely Place	14	10
18 Our Lady Peace, Superman's Dead	13	23
19 The Cure, Wrong Number	13	11
20 Blur, Song 2	13	10
21 Longpigs, On And On	13	12
22 Caroline's Spine, Sullivor	13	6
23 Space Monkeys, Sugar Cane	12	9
24 Third Eye Blind, Graduate	12	29
25 The Offspring, I Choose	12	12
26 The Verve, Bitter Sweet Symphony	12	6
27 Snoop Doggy Dog W/Rage Against, Bounce	12	13
28 The Wallflowers, Three Marlenas	11	6
29 Sneaker Pimps, 6 Underground	11	9
30 Tool, Forty Six & 2	11	7

KKND

New Orleans MD: Rod Ryan

	TW	LW
1 Days Of The New, Touch, Peel And Stand	47	43
2 Smash Mouth, Walkin' On The Sun	46	44
3 Sublime, Wrong Way	45	42
4 Sugar Ray, Fly	42	43
5 Foo Fighters, Everlong	41	46
6 Chumbawamba, Tubthumping	38	19
7 Oasis, O' You Know What I Mean?	24	45
8 Faith No More, Ashes To Ashes	19	17
9 Green Day, Hitchin' A Ride	18	17
10 Creed, My Own Prison	18	21
11 The Verve, Bitter Sweet Symphony	18	20
12 Cowboy Mouth, Jenry Sings	18	15
13 Our Lady Peace, Clumy	18	18
14 Matchbox 20, Push	17	15
15 Catherine Wheel, Odious	17	17
16 The Tea Party, Temptation	17	17
17 Big Weck, The Dal	17	15
18 Jimmie's Chicken Shack, High	17	20
19 Blink 182, Dammn	17	13
20 Life Of Agony, Weeds	17	18
21 Everclear, Everything To Everyone	16	20
22 Filter & The Crystal Method, (Can't You)	16	18
23 Bush, Mouth	16	18
24 Live, Rattlesnake	16	17
25 Moist, Resurrection	16	16
26 The Offspring, I Choose	16	19
27 Seven Mary Three, Lucky	16	15
28 K's Choice, A Sound That Only You Can	15	15
29 Foo Fighters, My Hero	15	16
30 Marcy Playground, Sex & Candy	14	4

KCXX

Riverside/San Bernardino MD: Bruce Pulley

	TW	LW
1 Green Day, Hitchin' A Ride	35	30
2 Everclear, Everything To Everyone	34	40
3 Marcy Playground, Sex & Candy	33	11
4 Chumbawamba, Tubthumping	33	39
5 Fiona Apple, Criminal	33	31
6 The Sundays, Summertime	32	40
7 Days Of The New, Touch, Peel And Stand	31	25
8 Smash Mouth, Walkin' On The Sun	31	26
9 Dance Hall Crashers, Lost Again	26	26
10 Save Ferris, Come On Eileen	26	25
11 Creed, My Own Prison	24	20
12 Duran Duran, Electric Barbarella	23	17
13 Oasis, Don't Go Away	23	23
14 Sugar Ray, Fly	23	30
15 Goldfinger, This Lonely Place	22	18
16 Sublime, Wrong Way	21	18
17 Sublime, Don't Time	21	23
18 Bush, Mouth	18	6
19 Third Eye Blind, How's It Going To Be	17	17
20 Third Eye Blind, Graduate	17	19
21 Jars Of Clay, Crazy Times	16	20
22 The Wallflowers, Three Marlenas	15	20
23 Local H, Bound For The Floor	15	13
24 Foo Fighters, Big Me	14	11
25 Bick-O-Nine, My Town	14	29
26 Reel Big Fish, Sell Out	13	15
27 Matchbox 20, Push	13	12
28 Self, Kuddes	13	2
29 Blur, Song 2	13	14
30 The Smashing Pumpkins, 1979	13	10

KROX

Austin PD: Sara Trexler
APD/MD: Lloyd "LA" Hocutt

	TW	LW
1 Marcy Playground, Sex & Candy	41	40
2 Chumbawamba, Tubthumping	39	38
3 Everclear, Everything To Everyone	38	33
4 The Sundays, Summertime	35	34
5 CornerShop, Brimful Of Asha	30	29
6 The Verve, Bitter Sweet Symphony	29	26
7 Green Day, Hitchin' A Ride	28	33
8 Foo Fighters, Everlong	26	23
9 Smash Mouth, Walkin' On The Sun	26	21
10 Matchbox 20, 3 AM	25	22
11 Sarah McLachlan, Sweet Surrender	25	17
12 Forest For The Trees, Dream	24	23
13 Oasis, Don't Go Away	24	25
14 Sugar Ray, Fly	23	28
15 Goldfinger, This Lonely Place	23	21
16 Third Eye Blind, Graduate	22	17
17 Fiona Apple, Criminal	22	35
18 Days Of The New, Touch, Peel And Stand	21	23
19 Sister Hazel, All For You	19	20
20 Bush, Mouth	19	13
21 Meredith Brooks, Bitch	18	16
22 Prodigy, Breathe	17	18
23 Seven Mary Three, Lucky	17	19
24 Beck, Deadweight	17	16
25 Ben Folds Five, Brick	17	16
26 Third Eye Blind, Semi-Charmed Life	17	16
27 Matchbox 20, Push	16	13
28 The Cure, Wrong Number	16	15
29 Abra Moore, Don't Feel Like Cryin'	16	16
30 Creed, My Own Prison	15	15

KEDG

Las Vegas PD: John Griffin
MD: Freddy Snakeskin

	TW	LW
1 Chumbawamba, Tubthumping	41	40
2 Prodigy, Breathe	40	35
3 Green Day, Hitchin' A Ride	38	39
4 Days Of The New, Touch, Peel And Stand	34	39
5 Foo Fighters, Everlong	29	22
6 David Bowie, I'm Afraid Of Americans	29	27
7 Bush, Mouth	28	40
8 Duran Duran, Electric Barbarella	28	24
9 Everclear, Everything To Everyone	27	25
10 The Offspring, I Choose	26	26
11 Jane's Addiction, So What!	25	22
12 The Cure, Wrong Number	25	30
13 Soundgarden, Bleed Together	20	22
14 Oasis, Don't Go Away	19	20
15 Blink 182, Dammn	19	21
16 Sublime, Don't Time	18	26
17 Our Lady Peace, Superman's Head	18	15
18 KMFDM, Megalomaniac	18	20
19 Third Eye Blind, Graduate	17	27
20 Filter & The Crystal Method, (Can't You)	17	23
21 Smash Mouth, Walkin' On The Sun	16	18
22 Save Ferris, Come On Eileen	15	18
23 Goldfinger, This Lonely Place	15	12
24 Longpigs, On And On	15	19
25 U2, Please	14	15
26 Baby Bird, You're Gorgeous	14	1
27 Seven Mary Three, Lucky	12	14
28 311, I've Never	12	6
29 Tonic, Soldier's Daughter	11	18
30 Naked, Mann's Clothes	11	11

WXEG

Dayton PD: Jeff Stevens
MD: Alan Rance

	TW	LW
1 Oasis, Don't Go Away	47	41
2 Smash Mouth, Walkin' On The Sun	46	40
3 Chumbawamba, Tubthumping	44	45
4 Fiona Apple, Criminal	44	40
5 The Sundays, Summertime	43	41
6 Everclear, Everything To Everyone	41	42
7 Longpigs, On And On	41	42
8 Imant Copola, Legend Of A Cowgirl	30	28
9 Duran Duran, Electric Barbarella	29	29
10 Sarah McLachlan, Sweet Surrender	29	28
11 Seven Mary Three, Lucky	29	29
12 The Wallflowers, Three Marlenas	28	29
13 Matchbox 20, 3 AM	27	27
14 Paula Cole, I Don't Want To Wait	27	27
15 Goldfinger, This Lonely Place	27	27
16 Ben Folds Five, Brick	26	20
17 Letters To Cleo, Anchor	25	20
18 The Verve, Bitter Sweet Symphony	25	24
19 Sugar Ray, Fly	24	21
20 The Cure, Wrong Number	24	25
21 Bush, Mouth	22	18
22 K's Choice, A Sound That Only You Can	22	18
23 Sneaker Pimps, 6 Underground	21	24
24 Green Day, Hitchin' A Ride	21	19
25 Third Eye Blind, How's It Going To Be	19	0
26 Space Monkeys, Sugar Cane	19	0
27 Mighty Mighty Bosstones, The Impression	16	15
28 Our Lady Peace, Superman's Dead	16	21
29 Meredith Brooks, Bitch	14	27
30 K's Choice, Not An Addict	14	14

WPLA

Jacksonville PD: Jim Randall
MD: Greg Brady

	TW	LW
1 Smash Mouth, Walkin' On The Sun	38	38
2 Fiona Apple, Criminal	34	32
3 Jimmie's Chicken Shack, High	33	33
4 Sugar Ray, Fly	32	34
5 Foo Fighters, Everlong	32	33
6 Sublime, Wrong Way	31	34
7 Oasis, Don't Go Away	30	34
8 Green Day, Hitchin' A Ride	29	17
9 311, Prisoner	24	12
10 Sarah McLachlan, Building A Mystery	23	35
11 Chumbawamba, Tubthumping	23	13
12 Mighty Mighty Bosstones, The Rascal King	23	20
13 Less Than Jake, Dopeman	22	13
14 Lazlo Bane, Overkill	22	21
15 Letters To Cleo, Anchor	21	16
16 Everclear, Everything To Everyone	21	19
17 Our Lady Peace, Superman's Dead	19	20
18 The Sundays, Summertime	19	19
19 The Cure, Wrong Number	19	19
20 Third Eye Blind, Semi-Charmed Life	15	11
21 The Offspring, I Choose	15	9
22 Live, Rattlesnake	15	18
23 Collective Soul, Listen	14	15
24 Tonic, If You Could Only See	14	10
25 Tonic, Soldier's Daughter	13	12
26 The Verve, Bitter Sweet Symphony	13	5
27 Blur, Song 2	13	13
28 Soundgarden, Bleed Together	12	2
29 Jane's Addiction, So What!	12	0
30 Reel Big Fish, Sell Out	12	12

WCYY

Portland, ME PD: Herb Ivy
MD: Brian James

	TW	LW
1 Bush, Mouth	42	20
2 Everclear, Everything To Everyone	42	37
3 Mighty Mighty Bosstones, The Rascal King	41	38
4 Oasis, Don't Go Away	40	38
5 Smash Mouth, Walkin' On The Sun	39	38
6 Foo Fighters, Everlong	38	41
7 Green Day, Hitchin' A Ride	38	41
8 The Sundays, Summertime	38	40
9 Fiona Apple, Criminal	38	39
10 Chumbawamba, Tubthumping	38	39
11 Days Of The New, Touch, Peel And Stand	31	25
12 Longpigs, On And On	31	28
13 Matchbox 20, 3 AM	30	20
14 The Wallflowers, Three Marlenas	30	26
15 Seven Mary Three, Lucky	29	30
16 U2, Please	29	27
17 Goldfinger, This Lonely Place	29	31
18 The Offspring, I Choose	29	30
19 The Cure, Wrong Number	28	14
20 Sublime, Don't Time	26	33
21 Live, Rattlesnake	23	22
22 Jane's Addiction, So What!	21	12
23 Space Monkeys, Sugar Cane	21	10
24 The Verve, Bitter Sweet Symphony	20	21
25 Letters To Cleo, Anchor	18	23
26 Jimmie's Chicken Shack, High	17	12
27 Blink 182, Dammn	16	13
28 Save Ferris, Come On Eileen	16	14
29 Beck, Deadweight	13	5
30 Sarah McLachlan, Sweet Surrender	13	6

KFRR

Fresno PD: Don O'Neal
AMD: Andy Winford

	TW	LW
1 Chumbawamba, Tubthumping	35	39
2 Smash Mouth, Walkin' On The Sun	34	36
3 Foo Fighters, Everlong	34	36
4 Everclear, Everything To Everyone	31	39
5 Green Day, Hitchin' A Ride	30	31
6 Oasis, Don't Go Away	30	30
7 The Sundays, Summertime	29	29
8 The Cure, Wrong Number	28	26
9 Bush, Mouth	28	27
10 Fiona Apple, Criminal	25	32
11 Self, Kuddes	22	0
12 Our Lady Peace, Superman's Dead	22	22
13 Third Eye Blind, Graduate	22	22
14 Matchbox 20, 3 AM	22	10
15 Sugar Ray, Fly	21	24
16 The Wallflowers, Three Marlenas	21	5
17 Matchbox 20, Push	20	17
18 Mighty Mighty Bosstones, The Rascal King	20	27
19 Sneaker Pimps, 6 Underground	19	24
20 Sublime, Wrong Way	19	24
21 Blur, Song 2	17	19
22 The Wallflowers, The Difference	17	19
23 Sarah McLachlan, Building A Mystery	17	21
24 Tonic, If You Could Only See	17	22
25 Depeche Mode, It's No Good	16	16
26 Days Of The New, Touch, Peel And Stand	16	5
27 Cake, The Distance	14	11
28 Collective Soul, Listen	13	13
29 Jewel, Foolish Games	13	17
30 Mighty Mighty Bosstones, The Impression	13	10

WWCD

Columbus PD: Jane Purcell
MD: Andy Davis

	TW	LW
1 The Sundays, Summertime	30	32
2 Sarah McLachlan, Sweet Surrender	29	29
3 Everclear, Everything To Everyone	26	18
4 Oasis, Don't Go Away	26	18
5 Mighty Mighty Bosstones, The Rascal King	18	30
6 The Verve, Bitter Sweet Symphony	17	15
7 Lisa Loeb, I Do	17	20
8 The Wallflowers, Three Marlenas	17	18
9 The Cure, Wrong Number	17	20
10 Imant Copola, Legend Of A Cowgirl	17	20
11 Sugar Ray, Fly	17	16
12 Abra Moore, Four Leaf Clover	16	16
13 Paula Cole, I Don't Want To Wait	16	18
14 Sublime, Santana	16	14
15 Forest For The Trees, Dream	16	19
16 Jars Of Clay, Crazy Times	16	20
17 Collective Soul, Blame	15	12
18 Fiona Apple, Criminal	15	15
19 Sheryl Crow, Home		



★ ★ ★ AIRPOWER ★ ★ ★
(Minimum 1,100 detections for the first time)

<p>Total Plays/Gain</p> <p>MARCY PLAYGROUND 1128/274 <i>Sex & Candy (Mammoth/Capitol)</i> Total Stations: 65/Chart Move: 25-16 Heavy (30+ plays): 11 KCXX, KNDD, KNRK, KOMF, KROQ, KROX, WENZ, WKDF, WNNX, XHRM, XTRA Medium (15-29): 23 CIMX, KCCX, KDGE, KICT, KITS, KJEE, KLZR, KPNT, KTCL, KTEG, KWOD, KZON, WAQZ, WAVF, WBRU, WBTZ, WBZU, WFNX, WGRD, WHFS, WPLY, WQBK, WRXK Light (Under 15): 31 New Airplay This Week: 11 CFNY, KFMA, KFTE, KKND, KTOZ, KXPK, WKRL, WPBZ, WRXQ, WXDX, WXZZ</p>	<p>Total Plays/Gain</p> <p>THE WALLFLOWERS 1108/70 <i>Three Marlenas (Interscope)</i> Total Stations: 69/Chart Move: 20-17 Heavy (30+): 4 KAEP, WCYY, WEQX, WPBZ Medium (15-29): 39 CIMX, KCHZ, KCXX, KENZ, KFMA, KFRR, KFTE, KHTY, KITS, KJEE, KKDM, KLZR, KNRX, KPNT, KROQ, KTEG, KTOZ, KZON, WAQZ, WBRU, WDGE, WENZ, WGRD, WHFS, WKDF, WKQX, WLUM, WPLT, WPLY, WQBK, WQXA, WROX, WRXQ, WWCD, WXDX, WXEG, WXNR, WXRK, XHRM Light (Under 15): 26 New Airplay This Week: 4 KCHZ, KFMA, KFRR, KICT</p>
---	---

AIRPOWER BOUND

Total Plays/Gain

LONGPIGS 1079/4
On And On (Mother/Island)
Total Stations: 75/Chart Move: 19-19
Heavy (30+ plays): 4 KFTE, KWOD, WCYY, WXEG
Medium (15-29): 33 CFNY, KCCX, KEDG, KENZ, KFMA, KICT, KJEE, KLZR, KNRX, KPNT, KTEG, KTOZ, KZON, WAQZ, WAVF, WBTZ, WBZU, WEDG, WEND, WENZ, WEQX, WFNX, WGRD, WKDF, WKRL, WMRQ, WNNX, WNVE, WROX, WRXQ, WXNR, XHRM, XTRA
Light (Under 15): 38
New Airplay This Week: 2 KCXX, KZNN

LIVE 1007/68
Rattlesnake (Radioactive/MCA)
Total Stations: 61/Chart Move: 23-21
Heavy (30+): 2 WQXA, WXNR
Medium (15-29): 34 KCCX, KFTE, KICT, KJEE, KKND, KLZR, KMYZ, KNDD, KNRX, KOMF, KPNT, KTBTZ, KTEG, KTOZ, KXRX, KZON, WBRU, WBTZ, WBZU, WCYY, WDGE, WEDG, WEND, WENZ, WEQX, WNNX, WPBZ, WPLA, WPLY, WQBK, WRXQ, WRZX, WXDX, XHRM
Light (Under 15): 25
New Airplay This Week: 4 KEDJ, KTCL, WKRL, WXEG

SEVEN MARY THREE 1005/14
Lucky (Mammoth/Atlantic)
Total Stations: 52/Chart Move: 21-22
Heavy (30+): 8 KCCX, KTBTZ, WEND, WENZ, WKDF, WQXA, WRXQ, WXDX
Medium (15-29): 24 KDGE, KICT, KKND, KMYZ, KNRX, KPNT, KPOI, KROX, KTOZ, KZON, WBZU, WCYY, WEDG, WEQX, WGRD, WKRL, WLUM, WNNX, WNVE, WPBZ, WRXR, WRZX, WXEG, WXNR
Light (Under 15): 20
New Airplay This Week: 2 WNNX, WROX

THIRD EYE BLIND 903/350
How's It Going To Be (Elektra/EEG)
Total Stations: 59/Chart Move: 37-24
Heavy (30+): 5 CIMX, KOMF, KROQ, KWOD, KZNN
Medium (15-29): 28 KAEP, KCXX, KDGE, KFTE, KITS, KJEE, KLYY, KMYZ, KNDD, KNRK, KTBTZ, KTEG, KTOZ, KZON, WBRU, WGRD, WHFS, WKQX, WLIR, WLUM, WMRQ, WNNX, WPLT, WPLY, WQXA, WRXQ, WXEG, XHRM
Light (Under 15): 26
New Airplay This Week: 19 CFNY, KAEP, KCCX, KDGE, KEDG, KEDJ, KKND, KLZR, KNRX, KPNT, KTBTZ, KTEG, WEQX, WKRL, WNNX, WQXA, WRXQ, WXEG, XTRA

JANE'S ADDICTION 892/260
So What! (Warner Bros.)
Total Stations: 69/Chart Move: 32-25
Heavy (30+): 4 CIMX, KXTE, WFNX, XHRM
Medium (15-29): 19 CFNY, KCCX, KEDG, KJEE, KLZR, KOMF, KTBTZ, KTCL, KTEG, KXRX, WBCN, WBTZ, WCYY, WDGE, WKQX, WKRL, WNNX, WROX, XTRA
Light (Under 15): 46
New Airplay This Week: 19 KDGE, KFMA, KFTE, KHTY, KICT, KNRK, KNRX, KROQ, KTBTZ, KTOZ, WBZU, WEDG, WEND, WENZ, WMRQ, WPLA, WROX, WRZX, WXNR

SARAH MCLACHLAN 761/132
Sweet Surrender (Arista)
Total Stations: 59/Chart Move: 33-28
Heavy (30+): 0
Medium (15-29): 26 CIMX, KAEP, KENZ, KFMA, KFTE, KITS, KLYY, KNRK, KNRX, KROQ, KROX, KTEG, KTOZ, KWOD, KXPK, KXRX, KZNN, KZON, WBTZ, WEQX, WHFS, WNNX, WPLT, WWCD, WXEG, XHRM
Light (Under 15): 33
New Airplay This Week: 6 KKDM, KMYZ, WHFS, WPLY, WRXQ, WXDX

BECK 738/115
Deadweight (London/Island)
Total Stations: 51/Chart Move: 34-29
Heavy (30+): 1 WFNX
Medium (15-29): 29 KCCX, KCHZ, KDGE, KFMA, KFTE, KHTY, KITS, KJEE, KKDM, KLZR, KNDD, KNRK, KOMF, KROQ, KROX, KTCL, KXRX, KZON, WAVF, WBRU, WBTZ, WENZ, WHFS, WKQX, WLUM, WXDX, WXNR, XHRM, XTRA
Light (Under 15): 21
New Airplay This Week: 7 CIMX, KEDJ, KTBTZ, KTEG, KZON, WCYY, WWCD

BLINK 182 725/-2
Dammit (Growing Up) (Cargo/MCA)
Total Stations: 53/Chart Move: 29-30
Heavy (30+): 0
Medium (15-29): 23 CIMX, KCCX, KEDG, KEDJ, KFMA, KHTY, KITS, KKND, KLZR, KNDD, KTCL, WBTZ, WBZU, WCYY, WENZ, WFNX, WKQX, WPBZ, WROX, WRZX, XHRM, XTRA
Light (Under 15): 30
New Airplay This Week: 4 KCCX, KFRR, KROX, WGRD

SUBLIME 707/-26
Doin' Time (Gasoline Alley/MCA)
Total Stations: 53/Chart Move: 28-31
Heavy (30+): 3 KMYZ, WBRU, WKQX
Medium (15-29): 23 CIMX, KCCX, KCXX, KEDG, KEDJ, KFMA, KLZR, KNDD, KNRX, KOMF, KPOI, KTCL, KTOZ, KWOD, KXTE, KZON, WAQZ, WCYY, WEQX, WFNX, WMRQ, WNNX, XHRM
Light (Under 15): 27

SPACE MONKEYS 683/157
Sugar Cane (Factory/Chingon/Interscope)
Total Stations: 56/Chart Move: 39-32
Heavy (30+): 2 KWOD, WLIR
Medium (15-29): 20 KCHZ, KDGE, KITS, KJEE, KNDD, KNRK, KTOZ, WBRU, WBTZ, WCYY, WENZ, WHFS, WKDF, WKRL, WLUM, WMRQ, WROX, WXEG, XHRM, XTRA
Light (Under 15): 34
New Airplay This Week: 9 CFNY, KJEE, KLZR, KPOI, WBRU, WEND, WKDF, WRZX, WXEG

U2 629/-8
Please (Island)
Total Stations: 53/Chart Move: 31-35
Heavy (30+): 1 WPBZ
Medium (15-29): 13 KAEP, KFMA, KFTE, KJEE, KTEG, KTOZ, WAVF, WCYY, WEDG, WENZ, WEQX, WRXR, WXNR
Light (Under 15): 39
New Airplay This Week: 2 WKRL, WPLA

SOUNDGARDEN 582/234
Bleed Together (A&M)
Total Stations: 52/Chart Move: Debut 37
Heavy (30+): 1 KXTE
Medium (15-29): 13 CFNY, KEDG, KJEE, KLZR, KNDD, KNRX, WBRU, WBTZ, WDGE, WNNX, WROX, WXRK, XTRA
Light (Under 15): 38
New Airplay This Week: 18 KCCX, KICT, KLZR, KTBTZ, KTCL, KTEG, KTOZ, WBTZ, WBZU, WEND, WENZ, WPBZ, WPLA, WPLY, WRXQ, WRXR, WRZX, WXDX

CORNERSHOP 531/102
Brimful Of Asha (Luaka Bop/Warner Bros.)
Total Stations: 57/Chart Move: Debut 39
Heavy (30+): 1 KROX
Medium (15-29): 15 CIMX, KFTE, KITS, KJEE, KLYY, KLZR, KOMF, KROQ, KTCL, WBTZ, WBZU, WENZ, WHFS, WROX, XHRM
Light (Under 15): 41
New Airplay This Week: 4 KDGE, WCYY, WFNX, WROX

RADIOHEAD 518/57
Karma Police (Capitol)
Total Stations: 53/Chart Move: Debut 40
Heavy (30+): 1 WBTZ
Medium (15-29): 12 CIMX, KFTE, KITS, KJEE, KNRK, KTCL, WEND, WENZ, WNVE, WRZX, XHRM, XTRA
Light (Under 15): 40
New Airplay This Week: 4 WCYY, WMRQ, WRXQ, WXDX

CHART BOUND

BEN FOLDS FIVE 446/36
Brick (550 Music)
Total Stations: 41
Heavy (30+): 1 KFTE
Medium (15-29): 12 KDGE, KFMA, KJEE, KLZR, KROX, KXRX, WEND, WENZ, WNNX, WRXQ, WWCD, WXEG
Light (Under 15): 28
New Airplay This Week: 3 WFNX, WKDF, WLUM

G. LOVE & SPECIAL SAUCE 361/93
Stepping Stones (Okeh/Epic)
Total Stations: 37
Heavy (30+): 1 WFNX
Medium (15-29): 8 WBTZ, WBZU, WENZ, WEQX, WNNX, WPLY, WROX, XHRM
Light (Under 15): 28
New Airplay This Week: 3 KCHZ, KLZR, KZNN

CREED 341/54
My Own Prison (Wind-up)
Total Stations: 23
Heavy (30+): 1 WQXA
Medium (15-29): 11 KCXX, KFTE, KICT, KKND, KNRX, KROX, KTOZ, KXTE, WBCN, WDGE, WXRK
Light (Under 15): 11
New Airplay This Week: 3 KFTE, WEND, WXNR

JIMMIE'S CHICKEN SHACK 277/18
High (Rocket/A&M)
Total Stations: 21
Heavy (30+): 1 WPLA
Medium (15-29): 6 KICT, KKND, KXTE, WCYY, WDGE, WROX
Light (Under 15): 14
New Airplay This Week: 3 KJEE, KPNT, WXRK

OLIVE 260/17
You're Not Alone (RCA)
Total Stations: 26
Heavy (30+): 0
Medium (15-29): 8 KJEE, KKDM, KROQ, KTCL, KWOD, WFNX, WPLT, XHRM
Light (Under 15): 18
New Airplay This Week: 1 KEDJ

LOVE SPIT LOVE 257/97
Fall On Tears (Maverick/Warner Bros.)
Total Stations: 37
Heavy (30+): 0
Medium (15-29): 6 KROQ, KZON, WHFS, WNNX, WWCD, XHRM
Light (Under 15): 31
New Airplay This Week: 8 KFTE, KROQ, KXPK, WEQX, WFNX, WHFS, WPBZ, WPLY

★ SELF 252/193
Kiddies (Spongebath/DreamWorks)
Total Stations: 35
Heavy (30+): 0
Medium (15-29): 6 KDGE, KFRR, KITS, KNDD, KROQ, KTOZ
Light (Under 15): 29
New Airplay This Week: 12 KCCX, KCXX, KDGE, KFRR, KITS, KJEE, KNDD, KNRK, KROX, KTCL, KTOZ, WBCN

BARENAKED LADIES 235/5
Brian Wilson (Reprise)
Total Stations: 19
Heavy (30+): 1 WPLT

MOST NEW STATIONS

JANE'S ADDICTION <i>So What! (Warner Bros.)</i>	19
THIRD EYE BLIND <i>How's It Going To Be (Elektra/EEG)</i>	19
SOUNDGARDEN <i>Bleed Together (A&M)</i>	18
SELF <i>Kiddies (Spongebath/DreamWorks)</i>	12
MARCY PLAYGROUND <i>Sex & Candy (Mammoth/Capitol)</i>	11

No. Of Stations

Medium (15-29): 4 KAEP, KENZ, WDGE, WNNX
Light (Under 15): 14
New Airplay This Week: 1 WNNX

311 225/62
Beautiful Disaster (Capricorn/Mercury)
Total Stations: 24
Heavy (30+): 0
Medium (15-29): 4 KDGE, KJEE, KOMF, WKQX
Light (Under 15): 20
New Airplay This Week: 2 KHTY, KZNN

SNEAKER PIMPS 205/11
Spin Spin Sugar (Clean Up/Virgin)
Total Stations: 28
Heavy (30+): 0
Medium (15-29): 6 KNDD, KOMF, KXRX, WFNX, WHFS, XTRA
Light (Under 15): 22
New Airplay This Week: 1 WBRU

PRODIGY 185/49
Smack My Bitch Up (XL Mute/Maverick/Warner Bros.)
Total Stations: 42
Heavy (30+): 0
Medium (15-29): 1 WHFS
Light (Under 15): 41
New Airplay This Week: 5 KFMA, KNDD, KNRK, KXTE, XHRM

TOOL 178/51
Forty Six & 2 (Freeworld)
Total Stations: 21
Heavy (30+): 0
Medium (15-29): 2 KXTE, WBZU
Light (Under 15): 19
New Airplay This Week: 4 KROX, KXRX, WDGE, WQXA

DEATH IN VEGAS 176/23
Dirt (Time Bomb)
Total Stations: 28
Heavy (30+): 0
Medium (15-29): 3 KROQ, WFNX, WNNX
Light (Under 15): 25
New Airplay This Week: 2 KITS, WLUM

PORTISHEAD 176/13
All Mine (Go! Beat/London/Island)
Total Stations: 24
Heavy (30+): 1 XHRM
Medium (15-29): 4 CFNY, KITS, KTCL, WFNX
Light (Under 15): 19
New Airplay This Week: 3 CIMX, KJEE, WPBZ

STEREOPHONICS 163/41
Traffic (V2)
Total Stations: 32
Heavy (30+): 0
Medium (15-29): 1 KEDJ
Light (Under 15): 31
New Airplay This Week: 2 KFTE, WLIR

LISA LOEB 163/5
I Do (Geffen)
Total Stations: 9
Heavy (30+): 2 KENZ, KZON
Medium (15-29): 4 KAEP, KZNN, WEQX, WWCD
Light (Under 15): 3
New Airplay This Week: 1 WAQZ

FOO FIGHTERS 135/28
My Hero (Roswell/Capitol)
Total Stations: 12
Heavy (30+): 0
Medium (15-29): 5 KITS, KKND, KROQ, WBTZ, WXRK
Light (Under 15): 7
New Airplay This Week: 1 WBTZ

DEFTONES 133/1
My Own Summer (Shove It) (Maverick/Warner Bros.)
Total Stations: 37
Heavy (30+): 0
Medium (15-29): 0
Light (Under 15): 37

★ A3 126/51
Ain't Goin' To Go (Elemental/Geffen)
Total Stations: 12
Heavy (30+): 0
Medium (15-29): 3 KTCL, KZNN, WENZ
Light (Under 15): 9
New Airplay This Week: 3 WBZU, WEQX, WRXQ

★ BABY BIRD 112/69
You're Gorgeous (Atlantic)
Total Stations: 25
Heavy (30+): 0
Medium (15-29): 0
Light (Under 15): 25
New Airplay This Week: 8 KEDG, KFTE, KHTY, KROX, KWOD, WLUM, WPLT, XTRA

★ REEL BIG FISH 111/62
She Has A Girlfriend Now (Mojo/Universal)
Total Stations: 18
Heavy (30+): 0
Medium (15-29): 1 KPNT
Light (Under 15): 17
New Airplay This Week: 7 KCXX, KEDJ, KNRK, KTOZ, KWOD, WKRL, WPLY

KMFDM 110/5
Megalomaniac (Wax Trax1/TVT)
Total Stations: 21
Heavy (30+): 0
Medium (15-29): 1 KEDG
Light (Under 15): 20
New Airplay This Week: 1 WROX

★ RAGE AGAINST THE MACHINE 108/105
The Ghost Of Tom Joad (Epic)
Total Stations: 22
Heavy (30+): 0
Medium (15-29): 2 KXRX, KXTE
Light (Under 15): 20
New Airplay This Week: 8 KNDD, KXRX, KXTE, WBCN, WBRU, WDGE, WFNX, WXRK

★ BETH ORTON 105/25
She Cries Your Name (Dedicated)
Total Stations: 12
Heavy (30+): 0
Medium (15-29): 2 WBTZ, XHRM
Light (Under 15): 10
New Airplay This Week: 2 WAVF, WBZU

★ DAVID BOWIE 101/34
I'm Afraid Of Americans (Virgin)
Total Stations: 24
Heavy (30+): 0
Medium (15-29): 1 KEDG
Light (Under 15): 23
New Airplay This Week: 3 CIMX, KROQ, WBCN

SONG ACTIVITY REPORTS

For Week Ending November 2, 1997



Detailed song tracking information for the last 3 weeks for all songs showing increased play this week. Total plays and gain do not include video play. Markets listed in order of population.

Grid of song activity reports for artists: 311 Beautiful Disaster, BARENAKED LADIES, BECK, BEC, BEN FOLDS FIVE, BUSH, 1649/197. Each entry includes station codes, week numbers, and play counts.

Grid of song activity reports for artists: CHUMBAWAMBA, CORNERSHOP, CREED, THE CURE, DAYS OF THE NEW. Each entry includes station codes, week numbers, and play counts.

Grid of song activity reports for artists: EVERCLEAR, G. LOVE & SPECIAL SAUCE, JANE'S ADDICTION, JIMMIE'S CHICKEN SHACK, LIVE. Each entry includes station codes, week numbers, and play counts.



SONG ACTIVITY REPORTS



Detailed song tracking information for the last 3 weeks for all songs showing increased play this week. Total plays and gain do not include video play. Markets listed in order of population.

For Week Ending November 2, 1997

LONGPIGS On And On (Mother/Island) Total Stations: 75 Chart Move: 19-19

LOVE SPIT LOVE 257/97 Fall On Tears (Maverick/Warner Bros.) Total Stations: 37 Chart Move: 25-16

MARCY PLAYGROUND 1128/274 Sex & Candy (Mammoth/Capitol) Total Stations: 65 Chart Move: 25-16

MATCHBOX 20 3 AM (Lava/Atlantic) Total Stations: 69 Chart Move: 12-13

SARAH MCLACHLAN 761/132 Sweet Surrender (Arista) Total Stations: 59 Chart Move: 33-28

OLIVE 260/17 You're Not Alone (RCA) Total Stations: 26 Chart Move: Debut 40

RADIOHEAD 518/57 Karma Police (Capitol) Total Stations: 53 Chart Move: Debut 40

SELF 252/193 Kiddies (Spongebath/DreamWorks) Total Stations: 35 Chart Move: 21-22

SEVEN MARY THREE 1005/14 Lucky (Mammoth/Atlantic) Total Stations: 52 Chart Move: 21-22

SNEAKER PIMPS 205/11 Spin Spin Sugar (Clean Up/Virgin) Total Stations: 28 Chart Move: 21-22

SOUNDGARDEN 582/234 Bleed Together (A&M) Total Stations: 52 Chart Move: Debut 37

SPACE MONKEYS 683/157 Sugar Cane (Factory/Chingon/Interscope) Total Stations: 56 Chart Move: 39-32

THIRD EYE BLIND 903/350 How's It Going To Be (Elektra/EEG) Total Stations: 59 Chart Move: 37-24

THE VERVE 1485/105 Bitter Sweet Symphony (VC/Hut/Virgin) Total Stations: 72 Chart Move: 20-17

THE WALLFLOWERS 1108/70 Three Marlenas (Interscope) Total Stations: 69 Chart Move: 20-17

POWER PLAYLISTS

WXRT Chicago VP/Programming: Norm Winer MD: Patty Martin

KFOG San Francisco PD: Paul Marszalek APD/MD: Briff Evans

WBOS Boston PD: Jim Herron MD: Cliff Nash

KTCZ Minneapolis PD: Lauren MacLeash MD: Jane Fredericksen

WHPT Tampa PD: Chuck Beck

WVRV St. Louis MD: Mike Richter

KBCO Denver PD: Dave Benson MD: Scott Arbough

KMTT Seattle SM: Chris Mays MD: Dean Carlson

CIDR Detroit PD: Murray Brookshaw MD: Ann Delisi

KKZN Dallas APD: Spike

KINK Portland, OR PD: Deanis Constantine APD: Anita Garlock

WXRV Boston PD: Joanne Doody MD: Mike Mullaney

Main chart table with columns: THIS WEEK, LAST WEEK, WKS. ON CHART, TITLE/LABEL/PROMOTION LABEL, ARTIST, TW, LW, DETECTIONS

MODERN ADULT

MODERN ADULT chart table with columns: THIS WEEK, LAST WEEK, WKS. ON CHART, TITLE/LABEL/PROMOTION LABEL, ARTIST, TW, LW, DETECTIONS

Records showing an increase in detections over the previous week, regardless of chart movement. A record which has been on the chart for more than 20 weeks will not receive a bullet, even if it registers an increase in detections.

**BLINK
★182★**

"Dammit"

(Growing Up)



CARGO
MUSIC

MCA

From The New Album *Dude Ranch*

**WATCH OUT DAMMIT
ROCK IS JUST STARTING!**

NEW AT:
KIOZ KRAD WSTZ
KFRQ KTUX WTKX
 WCPR

ON OVER 75 STATIONS THIS WEEK!

30 MODERN ROCK MONITOR

TOP 5 PHONES AT:
KROQ WFNX
Q101 WENZ
89X XHRM
KEDJ 91X

**ON TOUR
WITH LESS THAN JAKE**

OVER 100,000 UNITS SCANNED, "DAMMIT!"

Produced by Mark Trombino Mixed by Tom Lord-Alge Management: Rick Devoe

<http://www.blink182.com> Get AMPed at MCA Online: www.mcarecords.com

WorldRadioHistory

M
TV
MUSIC TELEVISION
ACTIVE

