

TOP 40 AIRPLAY Monitor

• We Listen To Radio •

January 27, 1995 \$ 4.95 Volume 3 • No. 5

TOP 40 HIGHLIGHTS

MAINSTREAM

#1

BOYZ II MEN

On Bended Knee (MOTOWN)

★ ★ ★ AIRPOWER ★ ★ ★

NO RECORDS QUALIFIED FOR AIRPOWER THIS WEEK

NEW RELEASES

BAHA MEN • *Sunny Day (ATLANTIC)*
HUEY LEWIS & THE NEWS • *Little Bitty Pretty One (ELEKTRA/EEG)*
THE MIGHTY RAW • *Go Go Power Rangers (ATLANTIC)*
NIRVANA • *The Man Who Sold The World (DGC/GEFFEN)*
SUBWAY (FEATURING 702) • *This Lil' Game We Play (BIV 10/MOTOWN)*
VAN HALEN • *Don't Tell Me (What Love Can Do) (WARNER BROS.)*
VICTORIA WILLIAMS • *You R Loved (ATLANTIC)*

RHYTHM-CROSSOVER

#1

TLC

Creep (LAFACE/ARISTA)

★ ★ ★ AIRPOWER ★ ★ ★

SOUL FOR REAL • *Candy Rain (UPTOWN/MCA)*

NEW RELEASES

CHAMP MC • *Sista's Betta Recognize (ELEKTRA/EEG)*
SUBWAY (FEATURING 702) • *This Lil' Game We Play (BIV 10/MOTOWN)*

ADULT

#1

EAGLES

Love Will Keep Us Alive (GEFFEN)

★ ★ ★ AIRPOWER ★ ★ ★

HOOTIE & THE BLOWFISH • *Hold My Hand (ATLANTIC)*

NEW RELEASES

BLESSID UNION OF SOULS • *I Believe (EMI)*
LONDONBEAT • *Come Back (RADIOACTIVE)*
THE MANHATTAN TRANSFER FEAT. FRANKIE VALLI • *Let's Hang On (ATLANTIC)*
BONNIE RAITT • *You Got It (ARISTA)*
CHRIS REA • *Fool (If You Think It's Over) (ELEKTRA/EEG)*
TAKE 6 • *You Can Never Ask Too Much Of Love (REPRISE)*

PUBLISHER: MICHAEL ELLIS
DIRECTOR OF CHARTS: DAVE ELLIOTT
TOP 40/ADULT CHART MANAGER: STEVEN GRAYBOW
NEWS EDITOR: PHYLLIS STARK
CHART PRODUCTION MANAGER: MICHAEL CUSSON
ASST. CHART PRODUCTION MANAGER: PAUL PAGE
EDITORIAL PRODUCTION MANAGER: BARRY BISHIN
ASSOC. EDITORIAL PRODUCTION MANAGER: MARCIA REPINSKI
EDITORIAL PRODUCTION: MARC GIACQUINTO, MORRIS KLEGMAN
ADVERTISING PRODUCTION MANAGER: LYDIA MIKULKO
ADVERTISING PRODUCTION ASST.: CINDEE WEISS
ADVERTISING ART DIRECTOR: RAY CARLSON
CIRCULATION MANAGER: JEANNE JAMIN

NATIONAL ADVERTISING MANAGER: JON GYNN
ADVERTISING SALES: NANCY BOWMAN, JACK FULMER
ADVERTISING SERVICES MGR.: MICHELE JACANGILO
SALES ASSISTANTS: EVELYN ASZODI, ERICA BENGTSON,
DOUG FERGUSON, ALYSE ZIGMAN

EDITORIAL ADVISER: TIMOTHY WHITE
PRODUCTION DIRECTOR: MARIE GOMBEERT
DIRECTOR OF MARKETING: ELISSA TOMASETTI
DIRECTOR OF RESEARCH: JANE RANZMAN

BILLBOARD MUSIC GROUP
PRESIDENT: HOWARD LANDER

© 1995 BPI Communications, 1515 Broadway, New York, NY 10036
212-536-5039 For subscriptions call 800-722-2346

Tom Jones

featuring
TORI AMOS



I WANNA GET BACK WITH YOU

GOING FOR ADDS FEBRUARY 6 & 7!

Written by Diane Warren



THE
ATLANTIC
GROUP

"As splendid as pop should be."

-Rolling Stone

ELEPHANT

I Love Saturday

IMPACTING POP RADIO NOW!

**EARLY MAJOR MARKETS!
KRBE · HOUSTON
Q99 · SALT LAKE CITY
WAHC · COLUMBUS
KIMN · DENVER
AND A DOZEN MORE!**

LP SALES OVER 400,000!

"Great record. I couldn't wait to get it on the air and when I did, instant reaction."

Joe Kelly · WAHC, Columbus

"I love 'I LOVE SATURDAY' We really need more records like this."

Terri McCormick · WTWR, Toledo

The new single and video from I Say I Say I Say.

Produced by Martyn Ware

On Elektra compact discs and  cassettes.

Monitor **BIGGEST GAINERS**



Strongest Increase In Airplay This Week

TOP 40/MAINSTREAM

INCREASE
IN PLAYS

MELISSA ETHERIDGE • If I Wanted To (ISLAND)	+591
WIOQ +25, WNTQ +24, WWSR +22, WYHY +20, WSTW +19, WTWR +19, KUTQ +19, KKRD +19, KHTY +18, WKRZ +18	
SHERYL CROW • Strong Enough (A&M)	+500
WKXJ +27, KHTY +25, WIOQ +23, KBFM +21, WZYP +21, WFLY +19, KMXV +18, KUTQ +18, WPXY +16, KKRD +15	
DIONNE FARRIS • I Know (COLUMBIA)	+401
WBZZ +29, WNTQ +23, WHYI +20, KKRD +20, WYHY +19, WNVZ +19, WWSR +18, KKLD +18, KBFM +16, WZYP +16	
GREEN DAY • When I Come Around (A&M/REPRISE)	+293
WPLY +18, WKRZ +18, KRBE +14, KISF +13, KHFI +13, WXXX +12, WNVZ +12, WFMF +10, WPXY +10, WRVQ +10	
R.E.M. • Bang And Blame (WARNER BROS.)	+281
WYCR +20, WZJM +18, WFLY +18, WKSS +16, KHFI +16, KMXV +15, WNTQ +15, WHOT +14, KRQQ +14, WHHY +12	
JAMIE WALTERS • Hold On (ATLANTIC)	+242
WWSR +22, WNVZ +22, WYCR +20, WSTW +18, WZPL +15, WZNY +14, WTWR +14, WPRO +11, KKLD +11, WXLK +9	
WEEZER • Buddy Holly (DGC/GEFFEN)	+206
KISF +29, KHTY +13, WDCG +13, KRBE +13, KDWB +11, WIOQ +11, WHHY +10, WZYP +10, WNNK +10, KKMG +9	
EAGLES • Love Will Keep Us Alive (GEFFEN)	+167
WKCI +22, KHHT +15, KJYO +15, WHHY +14, WAHC +13, WFLY +12, WZYP +10, WDJX +9, WNNK +8, WXKB +7	
MARTIN PAGE • In The House Of Stone And Light (MERCURY)	+153
KHTY +18, WHYI +16, WNOK +14, WZYP +13, WWCK +11, WXKB +10, KHHT +10, KKRD +8, WAPE +8, WDDJ +7	
PEARL JAM • Better Man (EPIC)	+149
WZJM +30, WAHC +20, WKBQ +17, WBHT +15, KRBE +14, WYHY +12, WNOK +9, WHHY +7, WXKB +6, KRQQ +5	

• TOP 40 TOPICS •

by Dave Elliott

Last week, we introduced the new "total plays to date" feature in the Song Activity Reports section of Monitor. As mentioned, the "TP" column can help radio stations and record companies better gauge if sufficient market airplay has taken place to start looking for sales. It can also help radio stations in deciding music rotations by comparing call-out research information with "total plays to date" info.

Here are some additional ways "TP" info can help each week: "TP" gives you the most stable view of a record each week, because you are looking at long-term, trended information that is more reliable in making music rotation decisions. In addition to gauging exposure levels within any given market, you can use the "TP" column to see which stations in each market broke a record, and how much exposure it takes before other stations (within the market and across America) come on-board. This can help uncover national trends as to what stations pave the way on certain kinds of records. Additionally, you can see patterns emerge with certain stations. For example, you can see WHTZ and KUTQ are airplay leaders with similar patterns on records by Green Day, R.E.M., and Veruca Salt. WBBM is already leading the "TP" column in detections on Lil Suzy and Real McCoy, compared with WQHT, which has high "TP" numbers on Method Man and The Notorious B.I.G.

In summary, "total plays to date" is one compact statistic you can scan each week, providing you with the industry's largest database of real music information.

TOP 40/RHYTHM-CROSSOVER

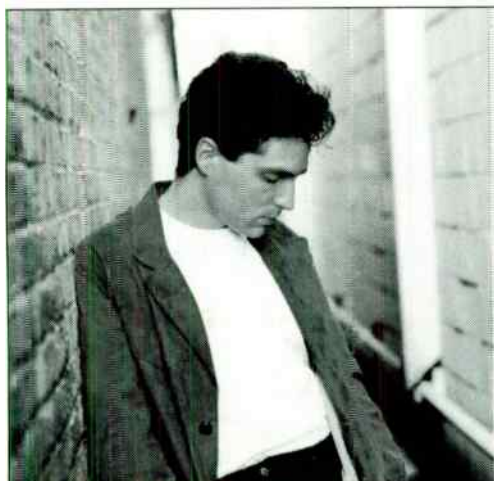
INCREASE
IN PLAYS

SOUL FOR REAL • Candy Rain (UPTOWN/MCA)	+289
KDON +52, WHJX +36, WJMN +29, KZHT +26, WWKX +23, KYLD +20, WJJS +17, XHTZ +17, KCAQ +16, KZFM +16	
IMMATURE • Constantly (MCA)	+182
KKSS +31, WJJS +19, WQHT +17, KLUC +16, WHJX +16, WWKX +13, KUBE +12, KYLD +11, KBOS +11, KHQT +11	
BROWNSTONE • If You Love Me (MJJ/EPIC)	+154
WJMH +29, KDON +28, WJMN +20, KHQT +17, KPRR +16, WHJX +9, KZFM +7, WERQ +7, KBXX +7, KZHT +5	
BRANDY • Baby (ATLANTIC)	+153
WWKX +26, KGGI +26, KYLD +17, KBOS +15, WQHT +14, KJYK +13, WHJX +12, WHHH +11, KDON +9, KBXX +8	
BOYZ II MEN • Water Runs Dry (MOTOWN)	+129
KYLD +29, KBXX +22, KPRR +20, WBBM +16, KDON +13, KLUC +11, KCAQ +9, KHQT +8, KMEL +8, WPGC +7	
REAL MCCOY • Run Away (ARISTA)	+128
WJMN +27, KZHT +22, KJYK +17, KZFM +13, KUBE +13, KCAQ +12, KBOS +10, KYLD +8, KPRR +7, KLUC +6	
MADONNA • Take A Bow (MAVERICK/SIRE/WARNER BROS.)	+113
KJYK +42, KLUC +22, KYLD +17, KUBE +16, KZFM +13, KKXX +11, XHTZ +7, KDON +6, WJJS +4, KGGI +4	
ADINA HOWARD • Freak Like Me (EASTWEST/EEG)	+106
WJMN +24, KZHT +14, WHHH +11, KBXX +11, KJYK +10, WWKX +10, WERQ +9, WPGC +7, KLUC +4, WFLZ +4	
SPANISH FLY • Daddy's Home (UPSTAIRS)	+96
KPRR +25, KMEL +18, KYLD +16, KHQT +16, KTFM +7, KBXX +6, WPOW +5, XHTZ +3, KPWR +2	
CAPLETON • Tour (SIGNET)	+78
WQHT +35, WPGC +22, WERQ +7, KBXX +6, KMEL +4, KJYK +1, WHJX +1, XHTZ +1, KPWR +1	

TOP 40/ADULT

INCREASE
IN PLAYS

MADONNA • Take A Bow (MAVERICK/SIRE/WARNER BROS.)	+171
WTMX +14, KMZQ +14, KEZR +14, WIVY +13, WLHT +12, WRQX +12, KTHT +11, WIOG +10, WMXN +10, WPLJ +9	
MARTIN PAGE • In The House Of Stone And Light (MERCURY)	+133
WIVY +21, WBLI +18, WBT +17, WIMX +16, WVAF +12, WQLH +12, WJDX +10, WMXN +10, KPLZ +10, WPLJ +10	
GLORIA ESTEFAN • Everlasting Love (EPIC)	+131
WZPK +17, WMXL +16, KTHT +15, WEZF +14, WMXV +14, WKQI +10, WRQX +9, WPLJ +8, WMXN +7, WBLI +7	
EAGLES • Love Will Keep Us Alive (GEFFEN)	+83
WKTI +20, KMZQ +15, KGBY +15, WAHR +12, WBLI +12, KVUU +10, WMTX +8, WPLJ +8, KGBX +6, WYYY +5	
TOM PETTY • You Don't Know How It Feels (WARNER BROS.)	+80
WMXQ +17, WKTI +15, WRQX +15, WCSO +14, WPLJ +11, WMTX +7, WBLI +6, WQLH +4, WMXN +4, WZPK +2	
DES'REE • You Gotta Be (550/EPIC)	+79
WMTX +16, WPLJ +14, WTMX +13, WMC +12, WIOG +10, WKQI +10, WARM +8, WJDX +7, WBLI +7, WMXV +6	
MELISSA ETHERIDGE • If I Wanted To (ISLAND)	+78
WZPK +19, WPLJ +15, WKQI +11, WKTI +11, WRQX +9, WBLI +7, WIMX +1, KGBY +1, KYKY +1, WKDD +1	
BOYZ II MEN • On Bended Knee (MOTOWN)	+76
WLHT +13, KYIS +12, KGBY +11, WKQI +9, KGBX +8, KEZR +6, WIVY +6, WDEF +5, KMZQ +5, KTHT +5	
HOOTIE & THE BLOWFISH • Hold My Hand (ATLANTIC)	+73
WMXL +12, WMC +12, WPLJ +11, KISN +8, WKRQ +8, WCSO +7, KYKY +7, WTFM +6, WSSX +5, WMTX +4	
PATTY SMYTH • Look What Love Has Done (MCA)	+70
WGSY +24, KISN +13, WMXV +10, WVAF +8, KPLZ +8, WTFM +4, WJDX +3, WYYY +3, WLHT +2, KGBX +1	



"NOTHING LEFT BEHIND US"

ALREADY ON 50 STATIONS INCLUDING:

WNCI WKTI
WTIC WKQI

Richard
Marx

OVER 1300 SPINS AT ADULT CONTEMPORARY

Ⓜ TOP 40/ADULT AIRPLAY

THE NEXT HIT SINGLE FROM THE PLATINUM ALBUM PAID VACATION

SEE RICHARD PERFORM LIVE ON "THE DAVID LETTERMAN SHOW" FEBRUARY 14.

PRODUCED AND ARRANGED BY RICHARD MARX DIRECTION: THE LEFT BANK ORGANIZATION ©1995 CAPITOL RECORDS, INC.



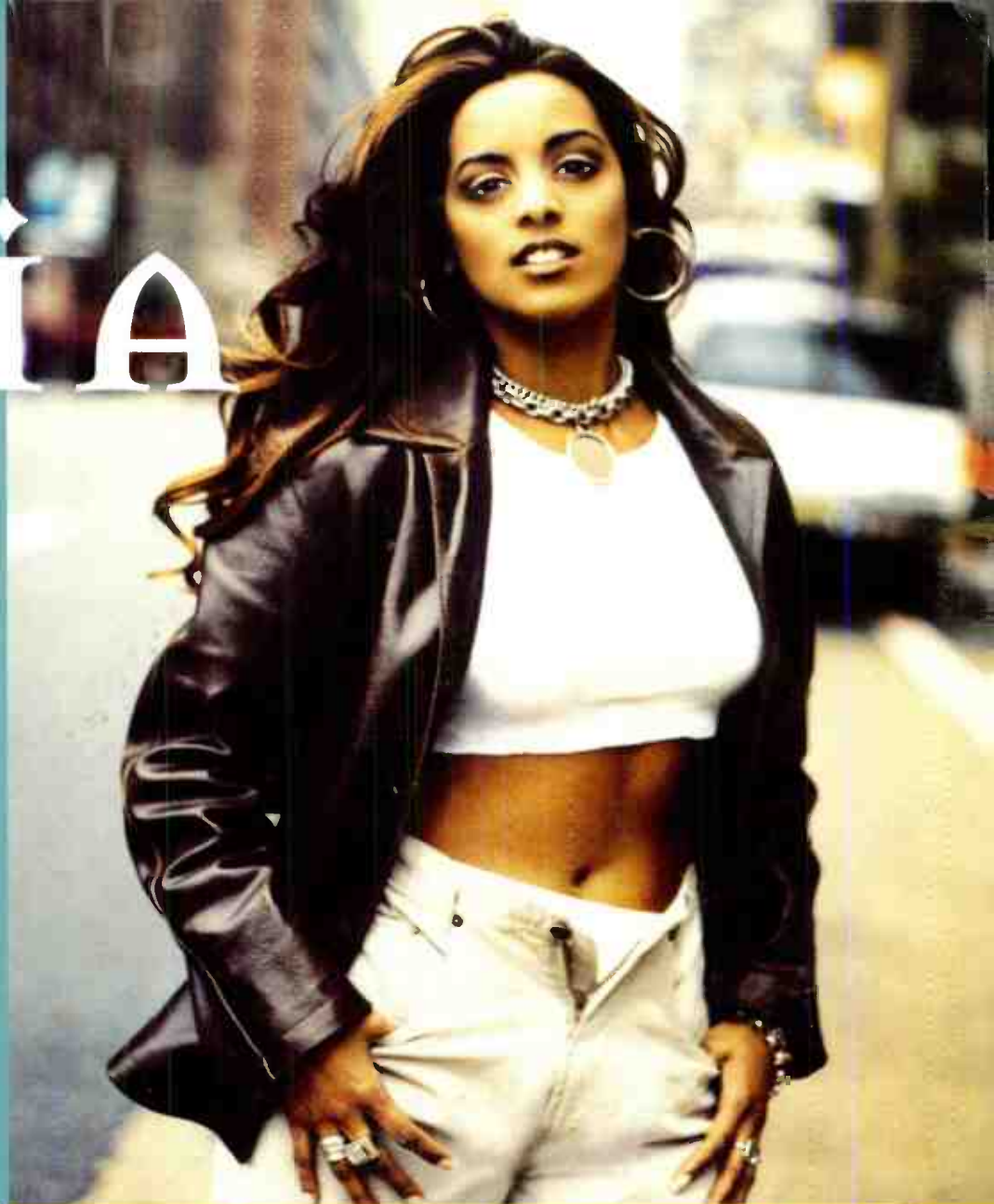
how i love him CYTHIA

2.9 MILLION LISTENERS!
OVER 185 SPINS!

ROTATIONS STARTING

B96	CHICAGO
HOT 97.7	SAN JOSE
POWER 96	MIAMI
KTFM	SAN ANTONIO
KKXX	BAKERSFIELD
KBFM	CORPUS CHRISTI
WOVV	WEST PALM
KPRR	EL PASO

& MANY MORE IN THE MIX!



george lamond

IT'S ALWAYS YOU

NOW OVER 1.7
MILLION LISTENERS!

ROTATIONS STARTING

B96	CHICAGO
POWER 96	MIAMI
KTFM	SAN ANTONIO
KPRR	EL PASO

& MANY MORE IN THE MIX!



World Radio History

Contact Mike Becce at 212.388.8307
or Joey Gardner at 212.388.8363



Monitor POWER PLAYLISTS

Playlists supplied by Broadcast Data Systems' Radio Track service...

FOR WEEK ENDING JANUARY 22, 1995

TOP 40 / MAINSTREAM

TOP 40 / RHYTHM - CROSSOVER

Grid of 16 radio station playlists including WBZZ, WFLZ, KUBE, KGGI, WTIC, KISS 95.7, Z100, FM 102, 92Q, Z90, and others.

Grid of 16 radio station playlists including WTIC, KISS 95.7, Z100, FM 102, 92Q, Z90, and others.

Grid of 16 radio station playlists including KFR, WNCI, WZPL, KTFM 102.7, HOT 97.7, and WJMH.

Detailed song tracking information for the last 3 weeks for all songs showing the number of stations, total plays and gain do not include video play Markets listed in order of population.

TOP 40 / MAINSTREAM

Grid of song activity reports for artists including UNLIMITED, BRANDY, TONI BRAXTON, BROWNSTONE, and CORONA. Each entry includes station counts, chart positions, and regional breakdowns.

Grid of song activity reports for artists including SHERYL CROW, DES'REE, ANDRU DONALDS, PETE DROGE, and EAGLES. Each entry includes station counts, chart positions, and regional breakdowns.

Grid of song activity reports for artists including MELISSA ETHERIDGE, DIONNE FARRIS, FLAMING LIPS, GIN BLOSSOMS, and GREEN DAY. Each entry includes station counts, chart positions, and regional breakdowns.

Monitor **SONG ACTIVITY REPORTS**

For Week Ending January 22, 1995

Broadcast Data Systems
Detailed song tracking information for the last 3 weeks for all songs showing increased play this week. Total plays are in order of population.

TOP 40 MAINSTREAM

HOOTIE & THE BLOWFISH 2529/131

Hold My Hand (Atlantic)

Total Stations: 78 Position On Chart: 5

Station	TP	Station	TP
MTV	103	Ral./Dur.	39
WHTZ	32 24	Austin	38 40
KHS	19 18 17	Richmond	1 1 10
WIDQ	40 35 32	Scranton	29 27 156
WPLY	47 44 46	Scranton	39 37 21 33

JADE 1900/132

Every Day Of The Week (Giant)

Total Stations: 71 Position On Chart: 13

Station	TP	Station	TP
MTV	3 3 3	Ral./Dur.	4 5 113
WHTZ	2 1 1	Austin	KHFI 44 42 43 692
KHS	25 23 3	Richmond	WRVQ 40 27 29 159
WIDQ	5 38 40	Scranton	WFLY 42 42 42 497
WPLY	1 1 1	Scranton	WBHT 3 1 14

FREEDY JOHNSTON 1009/69

Bad Reputation (Elektra/EGG)

Total Stations: 73 Position On Chart: 33

Station	TP	Station	TP
MTV	6 4 6	Ral./Dur.	WDCG 2 4 5 113
WHTZ	9 2 2	Austin	KHFI 44 42 43 692
KHS	3 3 4	Richmond	WRVQ 40 27 29 159
WIDQ	1 1 1	Scranton	WFLY 42 42 42 497
WPLY	22 17 19	Scranton	WBHT 3 1 14

INI KAMOZE 2461/14

Here Comes The Hotstepper (Columbia)

Total Stations: 74 Position On Chart: 6

Station	TP	Station	TP
MTV	7 4 3	Ral./Dur.	WDCG 33 32 29 379
WHTZ	19 17 2	Austin	KHFI 66 65 70 598
KHS	62 63 62	Richmond	WRVQ 46 37 27 242
WIDQ	1 1 1	Scranton	WFLY 57 57 59 656
WPLY	1 1 1	Scranton	WBHT 65 64 52 479

MADONNA 2922/116

Take A Bow (Maverick/Sire/WB)

Total Stations: 76 Position On Chart: 4

Station	TP	Station	TP
MTV	16 19 17	Ral./Dur.	WDCG 36 37 34 247
WHTZ	40 39 38	Austin	KHFI 39 38 29 157
KHS	54 56 53	Richmond	WRVQ 31 28 25 250
WIDQ	39 41 37	Scranton	WFLY 53 51 37 107
WPLY	1 1 1	Scranton	WBHT 21 20 26 153

PEARL JAM 1091/149

Better Man (Epic)

Total Stations: 60 Position On Chart: 30

Station	TP	Station	TP
MTV	1 1 1	Ral./Dur.	WDCG 4 1 3 58
WHTZ	60 64 62	Austin	KHFI 44 44 41 256
KHS	1 1 1	Richmond	WRVQ 16 14 12 66
WIDQ	47 44 46	Scranton	WFLY 15 13 8 27
WPLY	47 44 46	Scranton	WBHT 35 20 9 78

CE C PENITON 637/137

Keep Givin' Me Your Love (Columbia)

Total Stations: 44 Position On Chart: 137

Station	TP	Station	TP
MTV	1 1 1	Ral./Dur.	WDCG 4 1 3 58
WHTZ	60 64 62	Austin	KHFI 44 44 41 256
KHS	1 1 1	Richmond	WRVQ 16 14 12 66
WIDQ	29 29 17	Scranton	WFLY 15 13 8 27
WPLY	29 29 17	Scranton	WBHT 35 20 9 78

TOM PETTY 2161/110

You Don't Know How It Feels (Warner Bros.)

Total Stations: 76 Position On Chart: 11

Station	TP	Station	TP
MTV	28 32 31	Ral./Dur.	WDCG 57 56 39 284
WHTZ	44 41 38	Austin	KHFI 1 1 1 3
KHS	3 3 3	Richmond	WRVQ 16 14 12 66
WIDQ	36 29 27	Scranton	WFLY 25 23 33 88
WPLY	36 29 27	Scranton	WBHT 66 63 64 383

R.E.M. 1837/281

Bang And Bump (Warner Bros.)

Total Stations: 77 Position On Chart: 14

Station	TP	Station	TP
MTV	30 39 34	Ral./Dur.	WDCG 7 8 8 54
WHTZ	11 17 15	Austin	KHFI 17 1 1 18
KHS	3 4 2	Richmond	WRVQ 16 14 12 66
WIDQ	40 32 10	Scranton	WFLY 30 12 1 43
WPLY	40 32 10	Scranton	WBHT 27 19 1 124

REAL MCCOY 509/79

Run Away (Arista)

Total Stations: 38 Position On Chart: 79

Station	TP	Station	TP
MTV	1 1 1	Ral./Dur.	WDCG 23 11 8 42
WHTZ	2 2 1	Austin	KHFI 63 64 60 250
KHS	7 2 2	Richmond	WRVQ 6 6 2 6
WIDQ	1 1 1	Scranton	WFLY 2 2 1 2
WPLY	1 1 1	Scranton	WBHT 2 2 1 2

TLC 1812/131

Creep (LaFace/Arista)

Total Stations: 70 Position On Chart: 15

Station	TP	Station	TP
MTV	33 39 28	Ral./Dur.	WDCG 14 15 13 161
WHTZ	6 4 7	Austin	KHFI 17 14 1 32
KHS	32 28 27	Richmond	WRVQ 9 9 8 30
WIDQ	35 44 41	Scranton	WFLY 41 41 36 261
WPLY	35 44 41	Scranton	WBHT 39 37 27 156

JAMIE WALTERS 797/242

Hold On (Atlantic)

Total Stations: 53 Position On Chart: 39

Station	TP	Station	TP
MTV	1 1 1	Ral./Dur.	WDCG 9 8 6 96
WHTZ	1 1 1	Austin	KHFI 1 1 1 3
KHS	1 1 1	Richmond	WRVQ 16 14 12 66
WIDQ	1 1 1	Scranton	WFLY 15 13 8 27
WPLY	1 1 1	Scranton	WBHT 35 20 9 78

WEEZER 1443/206

Buddy Holly (DGC/Geffen)

Total Stations: 76 Position On Chart: 19

Station	TP	Station	TP
MTV	33 30 28	Ral./Dur.	WDCG 13 13 13
WHTZ	49 40 37	Austin	KHFI 1 1 1 3
KHS	3 1 1	Richmond	WRVQ 16 14 12 66
WIDQ	12 1 1	Scranton	WFLY 26 25 19 115
WPLY	12 1 1	Scranton	WBHT 30 22 20 99

WILLI ONE BLOOD 716/92

Whiney, Whiney (RCA)

Total Stations: 48 Position On Chart: 40

Station	TP	Station	TP
MTV	1 1 1	Ral./Dur.	WDCG 14 13 8 56
WHTZ	1 1 1	Austin	KHFI 14 13 8 56
KHS	1 1 1	Richmond	WRVQ 16 14 12 66
WIDQ	1 1 1	Scranton	WFLY 26 25 19 115
WPLY	1 1 1	Scranton	WBHT 30 22 20 99

VANESSA WILLIAMS 1318/81

The Sweetest Days (Wing/Mercury)

Total Stations: 72 Position On Chart: 22

Station	TP	Station	TP
MTV	19 15 18	Ral./Dur.	WDCG 11 8 3 129
WHTZ	2 1 1	Austin	KHFI 2 2 2 7
KHS	3 3 3	Richmond	WRVQ 16 14 12 66
WIDQ	1 1 1	Scranton	WFLY 20 13 1 89
WPLY	1 1 1	Scranton	WBHT 2 1 1 5



TOP 40 RHYTHM-CROSSOVER

Table 1: Song activity reports for 69 BOYZ (Kitty Kitty), AALIYAH (Age Ain't Nothing But A Number), ALL-4-ONE (She's Got) Skillz, MARY J. BLIGE (I'm Goin' Down), and BONE THUGS N HARMONY (Foe Tha Love Of \$).

Table 2: Song activity reports for BOYZ II MEN (Water Runs Dry), BRANDY (Baby), BROWNSTONE (If You Love Me), CHANGING FACES (Foolin' Around), and CORONA (The Rhythm Of The Night).

Table 3: Song activity reports for CYNTHIA (How I Love Him), ADINA HOWARD (Freak Like Me), ICE CUBE (What Can I Do?), IMMATURE (Constantly), and K7 (Move It Like This).

Table 4: Song activity reports for LIL SUZY (Promise Me), LIVIN' JOY (Dreamer), MADONNA (Take A Bow), MAX-A-MILLION (Fat Boy), and THE NOTORIOUS B.I.G. (Big Poppa).

Table 5: Song activity reports for CE PENENSON (Keep Givin' Me Your Love), REAL MCCOY (Run Away), JON SECADA (Mental Picture), SOUL FOR REAL (Candy Rain), and SPANISH FLY (Daddy's Home).

Table 6: Song activity reports for SUBWAY (This Lil' Game We Play), TLC (Creep), TLC (Red Light Special), CRYSTAL WATERS (What I Need), and WILLI ONE BLOOD (Whiney).

TOP 40 ADULT

Grid of 40 song activity reports for various artists including 4 P.M., Blessid Union of Souls, Boyz II Men, Eagles, Gloria Estefan, Melissa Etheridge, Dionne Farris, Gin Blossoms, Amy Grant/Vince Gill, Hootie & The Blowfish, Huey Lewis & The News, Madonna, Richard Marx, Martin Page, Tom Petty, Real McCoy, Jon Secada, Bob Seger/Silver Bullet Band, Patty Smyth, Luther Vandross, John Waite, Vanessa Williams, and others. Each report includes station names, play counts, and chart positions.

Monitor TOP 40/ADULT AIRPLAY



DETECTIONS

BDS IMPACT

AIRPOWER (Minimum 500 detections for the first time)

Total Plays/Gain

HOOTIE & THE BLOWFISH 572/73
Hold My Hand (Atlantic)
 Total Stations: 32/Position On Chart: 20
 Heavy (30+ plays): 3 WKTI, WPLJ, WRQX
 Medium (15-29): 18 KISN, KPLZ, KVVU, KYKY, WBLI, WCSO, WIMX, WIOG, WKDD, WKQI, WKRQ, WMTX, WMXN, WMXQ, WMXV, WQLH, WSSX, WZPK
 Light (Under 15): 11
 New Airplay This Week: 2 WMXL, WTFM

AIRPOWER BOUND

Total Plays/Gain

4 P.M. 388/64
Sukiyaki (Next Plateau/London/Island)
 Total Stations: 25/Position On Chart: 25
 Heavy (30+ plays): 2 WIMX, WIVY
 Medium (15-29): 10 KTHT, KYIS, WBLI, WIOG, WKRQ, WKTI, WMJQ, WMTX, WQLH
 Light (Under 15): 14
 New Airplay This Week: 6 WAHR, WALK, WBLI, WJDX, WSSX, WTFM

HUEY LEWIS & THE NEWS 347/19
Little Bitty Pretty One (Elektra/EEG)
 Total Stations: 26/Position On Chart: 27
 Heavy (30+): 1 WIVY
 Medium (15-29): 10 KGBY, KYIS, WARM, WCSO, WIMX, WKDD, WKTI, WMXL, WSSX, WZPK
 Light (Under 15): 15
 New Airplay This Week: 2 WLHT, WVAF

LUTHER VANDROSS 330/69
Always And Forever (LV/Epic)
 Total Stations: 31/Position On Chart: 31
 Heavy (30+): 2 KTHT, WMJQ
 Medium (15-29): 7 KGBX, KPLZ, WARM, WDEF, WJDX, WYYY, WZPK
 Light (Under 15): 22
 New Airplay This Week: 3 KISN, KMZQ, KPLZ

TOM PETTY 282/80
You Don't Know How It Feels (Warner Bros.)
 Total Stations: 16/Position On Chart: 33
 Heavy (30+): 2 WCSO, WMXQ
 Medium (15-29): 7 WIMX, WKDD, WKTI, WMXN, WPLJ, WRQX, WZPK
 Light (Under 15): 7
 New Airplay This Week: 3 WBLI, WMTX, WRQX

PATTY SMYTH 281/70
Look What Love Has Done (MCA)
 Total Stations: 22/Position On Chart: 34
 Heavy (30+): 0
 Medium (15-29): 9 KISN, KPLZ, WARM, WCSO, WEZF, WGSY, WMJQ, WTMX, WZPK
 Light (Under 15): 13
 New Airplay This Week: 3 WJDX, WMXV, WVAF

GIN BLOSSOMS 236/17
Allison Road (A&M)
 Total Stations: 16/Position On Chart: 36
 Heavy (30+): 0
 Medium (15-29): 9 WIMX, WIOG, WKDD, WKTI, WMXL, WMXN, WMXV, WSSX, WZPK
 Light (Under 15): 7

GLORIA ESTEFAN 206/131
Everlasting Love (Epic)
 Total Stations: 16/Position On Chart: 37
 Heavy (30+): 0
 Medium (15-29): 8 KTHT, WEZF, WKQI, WMXL, WMXV, WPLJ, WRQX, WZPK
 Light (Under 15): 8
 New Airplay This Week: 10 KTHT, WARM, WBLI, WEZF, WKQI, WMXL, WMXN, WMXV, WVAF, WZPK

CHART BOUND

Total Plays/Gain

JOHN WAITE 148/12
How Did I Get By Without You (Imago)
 Total Stations: 13
 Heavy (30+): 0
 Medium (15-29): 4 KISN, WBT, WKTI, WZPK
 Light (Under 15): 9
 New Airplay This Week: 1 WMXV

BOB SEGER/SILVER BULLET BAND 130/23
In Your Time (Capitol)
 Total Stations: 11
 Heavy (30+): 0

MOST NEW AIRPLAY THIS WEEK

GLORIA ESTEFAN 10
Everlasting Love (Epic)

4 P.M. 6
Sukiyaki (Next Plateau/London/Island)

DIONNE FARRIS 5
I Know (Columbia)

SHERYL CROW 4
Strong Enough (A&M)

MELISSA ETHERIDGE 4
If I Wanted To (Island)

Medium (15-29): 4 WCSO, WEZF, WTMX, WZPK
 Light (Under 15): 7

REAL MCCOY 127/14
Another Night (Arista)
 Total Stations: 10
 Heavy (30+): 0
 Medium (15-29): 4 KTHT, KXYQ, WIMX, WIOG
 Light (Under 15): 6

DIONNE FARRIS 116/61
I Know (Columbia)
 Total Stations: 9
 Heavy (30+): 0
 Medium (15-29): 4 WBLI, WKTI, WRQX, WZPK
 Light (Under 15): 5
 New Airplay This Week: 5 WBLI, WIMX, WKDD, WMXN, WRQX

MELISSA ETHERIDGE 104/78
If I Wanted To (Island)
 Total Stations: 12
 Heavy (30+): 0
 Medium (15-29): 3 WKTI, WPLJ, WZPK
 Light (Under 15): 9
 New Airplay This Week: 4 WBLI, WKQI, WRQX, WZPK

BLESSID UNION OF SOULS 90/28
I Believe (SBK/EMI)
 Total Stations: 4
 Heavy (30+): 1 WKRQ
 Medium (15-29): 2 WIMX, WZPK
 Light (Under 15): 1
 New Airplay This Week: 1 WZPK

SHERYL CROW 79/44
Strong Enough (A&M)
 Total Stations: 12
 Heavy (30+): 0
 Medium (15-29): 1 WMXQ
 Light (Under 15): 11
 New Airplay This Week: 4 WAHR, WBLI, WMTX, WMXQ

THIS WEEK	LAST WEEK	WEEKS ON	TITLE/LABEL	ARTIST	DETECTIONS	
					TW	LW
			★ ★ ★ NO. 1 ★ ★ ★			
1	1	8	LOVE WILL KEEP US ALIVE	GEFFEN 2 weeks at No. 1 EAGLES	1225	1142
2	5	6	TAKE A BOW	MAVERICK/SIRE/WARNER BROS. MADONNA	1122	951
3	4	14	YOU GOTTA BE	550 MUSIC DES'REE	1112	1033
4	3	11	THE SWEETEST DAYS	WING/MERCURY VANESSA WILLIAMS	1098	1069
5	2	20	I'M THE ONLY ONE	ISLAND MELISSA ETHERIDGE	1095	1120
6	8	10	IN THE HOUSE OF STONE AND LIGHT	MERCURY M. PAGE	966	833
7	7	23	I'LL MAKE LOVE TO YOU	MOTOWN BOYZ II MEN	946	922
8	6	17	ALWAYS	MERCURY BON JOVI	936	945
9	15	8	ON BENDED KNEE	MOTOWN BOYZ II MEN	811	735
10	11	11	HOUSE OF LOVE	A&M AMY GRANT WITH VINCE GILL	809	788
11	14	11	NOTHING LEFT BEHIND US	CAPITOL RICHARD MARX	792	744
12	9	40	IF YOU GO	SBK/EMI JON SECADA	759	814
13	13	37	WILD NIGHT	MERCURY JOHN MELLENCAMP	676	747
14	16	15	WHEN WE DANCE	A&M STING	663	705
15	21	10	MENTAL PICTURE	SBK/EMI JON SECADA	660	573
16	10	19	TURN THE BEAT AROUND	CRESCENT MOON G. ESTEFAN	660	812
17	17	24	CIRCLE OF LIFE	HOLLYWOOD ELTON JOHN	655	702
18	18	41	COME TO MY WINDOW	ISLAND MELISSA ETHERIDGE	646	642
19	12	22	ALL I WANNA DO	A&M SHERYL CROW	629	773
			★ ★ ★ AIRPOWER ★ ★ ★			
20	23	7	HOLD MY HAND	ATLANTIC HOOTIE & THE BLOWFISH	572	499
21	19	18	SECRET	MAVERICK/SIRE/WARNER BROS. MADONNA	533	633
22	22	26	LUCKY ONE	A&M AMY GRANT	470	535
23	25	22	I'LL STAND BY YOU	SIRE/WARNER BROS. PRETENDERS	419	429
24	24	16	PICTURE POSTCARDS FROM L.A.	SBK/EMI J. KADISON	408	448
25	31	7	SUKIYAKI	NEXT PLATEAU/LONDON/ISLAND 4 P.M.	388	324
26	29	11	MISSING YOU	COLUMBIA STEVE PERRY	354	367
27	30	6	LITTLE BITTY PRETTY ONE	ELEKTRA/EEG H. LEWIS/NEWS	347	328
28	26	15	ONCE IN A LIFETIME	COLUMBIA MICHAEL BOLTON	343	400
29	27	13	ONLY ONE ROAD	550 MUSIC CELINE DION	339	395
30	28	25	WHEN CAN I SEE YOU	EPIC BABYFACE	337	381
31	34	4	ALWAYS AND FOREVER	LV/EPIC LUTHER VANDROSS	330	261
32	32	23	WHISPER YOUR NAME	COLUMBIA HARRY CONNICK, JR.	294	308
33	37	2	YOU DON'T KNOW HOW IT FEELS	WARNER BROS. T. PETTY	282	202
34	36	3	LOOK WHAT LOVE HAS DONE	MCA PATTY SMYTH	281	211
35	33	23	DECEMBER 1963	CURB FOUR SEASONS	259	300
36	35	6	ALLISON ROAD	A&M GIN BLOSSOMS	236	219
37	NEW		EVERLASTING LOVE	EPIC GLORIA ESTEFAN	206	75
38	39	26	UNTIL I FALL AWAY	A&M GIN BLOSSOMS	197	172
39	40	7	LIVING IN DANGER	ARISTA ACE OF BASE	166	168
40	NEW		MISHALE	METRO BLUE/CAPITOL ANDRU DONALDS	164	165

Records showing an increase in detections over the previous week, regardless of chart movement. A record which has been on the chart for more than 20 weeks will not receive a bullet, even if it registers an increase in detections. Airpower awarded to those records which attain 500 detections for the first time. If two records are tied in number of plays, the record being played on more stations is placed first. Records below the top 20 are removed from the chart after 26 weeks. ©1994, Billboard/BPI Communications.

Airpower awarded to those records which attain 500 detections for the first time. New airplay lists those stations registering six or more detections per week on a record for the first time. ★ Initial impact: records registering 75 or more total detections for the first time.

WHIGFIELD

"I think it's such a smash that I not only played it in Nashville, but I brought it with me to Boston."
 —John Ivy, WXKS, Boston

SATURDAY NIGHT

"Sounds great on the air. A perfect balance record."
 —Cruze, WKBQ, St. Louis



MOVE IT LIKE THIS

from the gold album SWING BATTA SWING

"If you're looking for your next INI KAMOZE, play K-7, it's #1 across the board!" CHARLES CHAVEZ, MD - KTFM

DEBUTS #38 MONITOR RHYTHM CROSSOVER CHART
CHARTED #12 MOST REQUESTED
"TOP 20 DOUBLE PLAY" - (UNITED STATIONS)

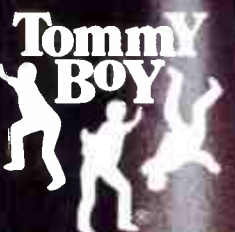
295 PLAYS!
2.8 MILLION TOP 40 LISTENERS!

NEW ACTION:

KYLD	SAN FRANCISCO
KLUC	LAS VEGAS
KKXX	BAKERSFIELD
WJMN	BOSTON

MAJOR ROTATION:

KTFM	SAN ANTONIO	74X
KHQT	SAN JOSE	58X
WWKX	PROVIDENCE	51X
WPOW	MIAMI	41X
KPRR	EL PASO	15X



#1 MOST ADDED AT AAA!
 #1 MOST ADDED AT ALTERNATIVE!
 #1 MOST ADDED AT ALBUM ROCK!
 OVER 200,000 ADVANCE ORDERS!

12 - 10 Modern Rock
 32 - 20 Album Rock / 529 - 838 Spins!

SIMPLE MINDS



SHE'S A RIVER

from the new album

GOOD NEWS FROM THE NEXT WORLD

Produced by Keith Forsey & Simple Minds

Worldwide representation: Clive Banks for **CBI**

ALREADY ON:

Z100	WHYT
KROQ	WKSE
WSTW	WENZ
B97	WLUM
99X	KRBE
WABB	KRQT
WGRD	LIVE 105
WWCK	AND MORE!

ON TOUR

2/9 LOS ANGELES CA	2/22 CLEVELAND OH
2/10 SAN DIEGO CA	2/23 TORONTO ONT
2/11 SAN JOSE CA	2/25 BOSTON IMA
2/13 SEATTLE WA	2/26 NEW YORK CITY NY
2/15 SALT LAKE CITY UT	2/27 WASHINGTON DC
2/16 DENVER CO	3/1 ATLANTA GA
2/18 MINNEAPOLIS MN	3/4 HOUSTON TX
2/19 CHICAGO IL	
2/21 DETROIT MI	

AND MORE!
 dates subject to change



©1995 Virgin Records Ltd.

Monitor TOP 40 AIRPLAY



DETECTIONS

JANUARY 16—22, 1995

Compiled from a national sample of airplay supplied by Broadcast Data Systems' Radio Track service to Top 40 Airplay Monitor. 79 top 40/mainstream and 32 top 40/rhythm-crossover stations are electronically monitored 24 hours a day, 7 days a week. Songs ranked by number of detections. ©1994, Billboard/BPI Communications.

THIS WEEK	LAST WEEK	WKS. ON CHART	TOP 40/MAINSTREAM		DETECTIONS		
			TITLE/LABEL/DISTRIBUTING LABEL	ARTIST	TW	LW	
			*** No. 1 ***				
1	1	13	ON BENDED KNEE MOTOWN 5 weeks at No. 1	BOYZ II MEN	3439	3548	
2	2	22	ANOTHER NIGHT ARISTA	REAL MCCOY	3268	3377	
3	3	18	ALWAYS MERCURY	BON JOVI	3101	3154	
4	4	8	TAKE A BOW MAVERICK/SIRE/WARNER BROS.	MADONNA	2922	2806	
5	7	15	HOLD MY HAND ATLANTIC	HOOTIE & THE BLOWFISH	2529	2398	
6	5	13	HERE COMES THE HOTSTEPPER COLUMBIA	INI KAMOZE	2461	2447	
7	6	13	SUKIYAKI NEXT PLATEAU/LONDON/ISLAND	4 P.M.	2412	2424	
8	8	24	I'M THE ONLY ONE ISLAND	MELISSA ETHERIDGE	2297	2377	
9	10	11	THE RHYTHM OF THE NIGHT EASTWEST/BEG	CORONA	2255	2112	
10	9	21	YOU GOTTA BE 550 MUSIC	DES'REE	2240	2142	
11	11	9	YOU DON'T KNOW HOW IT FEELS WARNER BROS.	TOM PETTY	2161	2051	
12	14	6	WHEN I COME AROUND A&M/REPRISE	GREEN DAY	1948	1655	
13	12	12	EVERY DAY OF THE WEEK GIANT	JADE	1900	1768	
14	17	5	BANG AND BLAME WARNER BROS.	R.E.M.	1837	1556	
15	13	7	CREEP LAFACE/ARISTA	TLC	1812	1681	
16	16	26	100% PURE LOVE MERCURY	CRYSTAL WATERS	1523	1609	
17	15	15	YOU WANT THIS VIRGIN	JANET JACKSON	1504	1642	
18	18	11	ZOMBIE ISLAND	THE CRANBERRIES	1489	1493	
19	24	5	BUDDY HOLLY DGC/GEFFEN	WEEZER	1443	1237	
20	21	16	ALLISON ROAD A&M	GIN BLOSSOMS	1393	1372	
21	22	9	MISHALE METRO BLUE/CAPITOL	ANDRU DONALDS	1359	1251	
22	23	11	THE SWEETEST DAYS WING/MERCURY	VANESSA WILLIAMS	1318	1237	
23	38	2	STRONG ENOUGH A&M	SHERYL CROW	1303	803	
24	19	25	ALL I WANNA DO A&M	SHERYL CROW	1302	1388	
25	36	2	I KNOW COLUMBIA	DIONNE FARRIS	1232	831	
26	20	26	I'LL MAKE LOVE TO YOU MOTOWN	BOYZ II MEN	1229	1388	
27	25	24	I'LL STAND BY YOU SIRE/WARNER BROS.	PRETENDERS	1161	1232	
28	29	9	GET READY FOR THIS RADIKAL/CRITIQUE	2 UNLIMITED	1152	1101	
29	26	19	INTERSTATE LOVE SONG ATLANTIC	STONE TEMPLE PILOTS	1131	1165	
30	33	2	BETTER MAN EPIC	PEARL JAM	1091	942	
31	28	20	NEW AGE GIRL ICHIBAN	DEADEYE DICK	1050	1135	
32	31	10	MENTAL PICTURE SBK/EMI	JON SECADA	1028	1030	
33	27	18	SECRET MAVERICK/SIRE/WARNER BROS.	MADONNA	1026	1155	
34	34	4	BAD REPUTATION ELEKTRA/EEG	FREEDY JOHNSTON	1009	940	
35	32	5	I BELONG TO YOU LAFACE/ARISTA	TONI BRAXTON	1008	981	
36	30	26	DECEMBER 1963 (OH, WHAT A NIGHT) CURB	FOUR SEASONS	934	1033	
37	NEW		IF I WANTED TO ISLAND	MELISSA ETHERIDGE	893	302	
38	35	16	LIVING IN DANGER ARISTA	ACE OF BASE	811	908	
39	NEW		HOLD ON ATLANTIC	JAMIE WALTERS	797	555	
40	NEW		WHINEY, WHINEY (WHAT REALLY DRIVES ME CRAZY) RCA	WILLI ONE BLOOD	716	624	

THIS WEEK	LAST WEEK	WKS. ON CHART	TOP 40/RHYTHM-CROSSOVER		DETECTIONS		
			TITLE/LABEL/DISTRIBUTING LABEL	ARTIST	TW	LW	
			*** No. 1 ***				
1	1	14	CREEP LAFACE/ARISTA 2 weeks at No. 1	TLC	1738	1716	
2	2	17	ON BENDED KNEE MOTOWN	BOYZ II MEN	1594	1652	
3	3	11	BEFORE I LET YOU GO INTERSCOPE	BLACKSTREET	1452	1525	
4	5	17	I WANNA BE DOWN ATLANTIC	BRANDY	1242	1353	
5	4	19	HERE COMES THE HOTSTEPPER COLUMBIA	INI KAMOZE	1200	1371	
6	6	23	ANOTHER NIGHT ARISTA	REAL MCCOY	1123	1189	
7	7	10	THE RHYTHM OF THE NIGHT EASTWEST/EEG	CORONA	1004	983	
8	11	6	IF YOU LOVE ME MJJ/EPIC	BROWNSTONE	945	791	
9	12	8	TAKE A BOW MAVERICK/SIRE/WARNER BROS.	MADONNA	859	746	
10	9	10	I MISS YOU ARISTA	N II U	843	884	
11	10	11	IF YOU THINK YOU'RE LONELY NOW MERCURY	K-CI HAILEY OF JODECI	838	865	
12	14	7	CONSTANTLY MCA	IMMATURE	832	650	
13	13	6	RED LIGHT SPECIAL LAFACE/ARISTA	TLC	783	731	
14	8	16	YOU WANT THIS VIRGIN	JANET JACKSON	777	919	
			*** AIRPOWER ***				
15	23	3	CANDY RAIN UPTOWN/MCA	SOUL FOR REAL	688	399	
16	16	14	EVERY DAY OF THE WEEK GIANT	JADE	539	616	
			*** AIRPOWER ***				
17	24	3	RUN AWAY ARISTA	REAL MCCOY	521	393	
18	17	26	I'LL MAKE LOVE TO YOU MOTOWN	BOYZ II MEN	517	570	
19	15	12	SHAME HOLLYWOOD/JIVE	ZHANE	502	640	
20	18	9	I BELONG TO YOU LAFACE/ARISTA	TONI BRAXTON	501	530	
21	27	3	WATER RUNS DRY MOTOWN	BOYZ II MEN	498	369	
22	31	4	BABY ATLANTIC	BRANDY	497	344	
23	19	18	TOOTSEE ROLL RIP-IT	69 BOYZ	487	513	
24	22	5	I'M GOIN' DOWN UPTOWN/MCA	MARY J. BLIGE	484	430	
25	21	8	DON'T SAY GOODBYE GIRL QWEST/WARNER BROS.	TEVIN CAMPBELL	437	453	
26	20	23	SUKIYAKI NEXT PLATEAU/LONDON/ISLAND	4 P.M.	423	475	
27	32	8	PROMISE ME METROPOLITAN	LIL SUZY	413	335	
28	26	10	FOOLIN' AROUND SPOILED ROTTEN/BIG BEAT/ATLANTIC	CHANGING FACES	398	379	
29	35	3	BIG POPPA BAD BOY/ARISTA	THE NOTORIOUS B.I.G.	355	280	
30	30	3	YOU GOTTA BE 550 MUSIC	DES'REE	348	360	
31	29	20	PLAYAZ CLUB CHRYSALIS/EMI	RAPPIN' 4-TAY	346	360	
32	38	2	KITTY KITTY RIP-IT	69 BOYZ	331	258	
33	37	2	WHAT I NEED MERCURY	CRYSTAL WATERS	319	267	
34	28	13	BE HAPPY UPTOWN/MCA	MARY J. BLIGE	313	360	
35	36	2	FAT BOY S.O.S.	MAX-A-MILLION	305	275	
36	34	2	WHINEY, WHINEY (WHAT REALLY DRIVES ME CRAZY) RCA	WILLI ONE BLOOD	300	283	
37	25	17	SECRET MAVERICK/SIRE/WARNER BROS.	MADONNA	292	381	
38	NEW		MOVE IT LIKE THIS TOMMY BOY	K7	282	239	
39	33	13	PRACTICE WHAT YOU PREACH A&M	BARRY WHITE	272	317	
40	39	12	THE SWEETEST DAYS WING/MERCURY	VANESSA WILLIAMS	261	245	

Records showing an increase in detections over the previous week, regardless of chart movement. A record which has been on either chart for more than 20 weeks will not receive a bullet, even if it registers an increase in detections. Airpower awarded to those records which attain 1500 detections (mainstream) or 500 detections (rhythm) for the first time. If two records are tied in number of plays, the record being played on more stations is placed first. Records below the top 20 are removed from the charts after 26 weeks.

THE CRANBERRIES "ODE TO MY FAMILY"

LP OVER 2.5 MILLION!
NOW OVER 770 COMBINED SPINS!

IN ROTATION AT:
KROQ KRBE
WHYT WPLY
WPST

#11 MONITOR
MODERN ROCK TRACK

MGMT: LEFT BANK ORGANIZATION ISLAND

PORTISHEAD

"SOUL TIMES (NOBODY LOVES ME)"

NOW OVER 900 COMBINED SPINS!

HEARD ON: Q101 33x
WLUM 30x
WHYT 64x

IN ROTATION AT:
KRBE
WABB
WGRD

9 - 6 MONITOR MODERN ROCK
#1 ARTIST BILLBOARD'S HEATSEEKERS
60 - 43 SOUNDSCAN SALES IN L.A.

BUZZ CLIP