

TOP 40 AIRPLAY Monitor

• We Listen To Radio •

January 23, 1998 \$4.95 Volume 6 • No. 4

TOP 40 HIGHLIGHTS

MAINSTREAM

#1

SAVAGE GARDEN

Truly Madly Deeply (COLUMBIA)

*** AIRPOWER ***

BILLIE MYERS • Kiss The Rain (UNIVERSAL)

SARAH MCLACHLAN • Sweet Surrender (ARISTA)

GOING FOR AIRPLAY

ALLURE • Last Chance (TRACK MASTERS/CRAVE)

AQUA • Turn Back Time (MCA)

CORNERSHOP • Brimful Of Asha (LUAKA BOP/WARNER BROS.)

RHYTHMIC TOP 40

#1

K-CI & JOJO

All My Life (MCA)

*** AIRPOWER ***

CELINE DION • My Heart Will Go On (550 MUSIC)

PUFF DADDY & THE FAMILY (FEAT. THE NOTORIOUS B.I.G. & MASE) • Been Around The World (BAH BOY/ARISTA)

CROSSOVER

#1

USHER

Nice & Slow (LAFACE/ARISTA)

*** AIRPOWER ***

SWV • Rain (RCA)

MARY J. BLIGE • Seven Days (MCA)

MARIAH CAREY (FEAT. BONE THUGS-N-HARMONY) • Breakdown (COLUMBIA)

GOING FOR AIRPLAY

ALLURE • Last Chance (TRACK MASTERS/CRAVE)

ADULT TOP 40

#1

SMASH MOUTH

Walkin' On The Sun (INTERSCOPE)

*** AIRPOWER ***

NO RECORDS QUALIFIED FOR AIRPOWER THIS WEEK

ADULT CONTEMPORARY

#1

CELINE DION

My Heart Will Go On (550 MUSIC)

*** AIRPOWER ***

SAVAGE GARDEN • Truly Madly Deeply (COLUMBIA)

GOING FOR AIRPLAY

CORNERSHOP • Brimful Of Asha (LUAKA BOP/WARNER BROS.)

DARYL HALL JOHN OATES • The Sky Is Falling (PUSH)

LOUIE SEZ • Cold To The Touch (RCA)

BARBRA STREISAND • If I Could (COLUMBIA)

Celine, LeAnn Have Modern AC Again Contemplating That Line In The Sand

by Kevin Carter

Throughout its brief history, the modern adult format has been split between PDs who feel the format should remain carefully focused on artists with a modern rock image, or at least a neutral one, and those who feel modern AC is in danger of becoming too narrow in scope if it ignores megahits from nonmodern artists.

Recently, that debate has been reopened because of perceptions of a product shortage on the part of some PDs and two mainstream pop smashes, LeAnn Rimes' "How Do I Live" and Celine Dion's "My Heart Will Go On."

At its peak last November, "How Do I Live" was receiving 283 plays a week from modern adult reporters. Dion's single, meanwhile, was last week's greatest gainer at modern adult radio. The week's third-greatest gainer was

"Truly Madly Deeply" by Savage Garden, an act that wouldn't pass muster with most modern PDs but saw modern adult success with "I Want You."

The issue of modern adult's boundaries has made for some unusual market situations. When new modern AC WKSI Greensboro, N.C., signed on, heritage adult top 40 outlet WKZL moved quickly to block. Now, WKSI is the station that will accommodate a "How Do I Live," while WKZL is more tightly drawn.

On one side of the "line in the sand" debate is KFMB-FM (Star 100.7) San Diego OM/PD Tracy Johnson, whose station became a modern AC poster child despite the fact that its PD has always viewed it as a hot AC in a modern-friendly market. "Predetermining what your audience expects from your station is a dangerous thing," he says.

Continued on page 5

Lutricia McNeal... It's Real "Ain't That Just The Way"

Aug. '96 SWEDEN
released and went to (1)

March '97 NETHERLANDS
released and went to (2)

May '97 GERMANY
released and went to (5)

July '97 SWITZERLAND
released and went to (3)

July '97 AUSTRIA
released and went to (2)

Sept. '97 UK
released and went to (6)

Dec. '97 USA
released to radio and retail

Jan. '98 NEW YORK
WKTU #11 Most Played
WBLI Top 10 requests

PHILADELPHIA
"Top 5 requests, early call-out
shows incredible hit potential."
- Jay Towers, WIOQ

TOLEDO
"Phones are Top 10 with all
demo females, huge sales."
- Bill Michaels, WVKS

Airplay Monitor Rhythmic Top 40 (38) - (31) Crave.

imani coppola



legend of a cowgirl

from "CHUPACABRA"



Bill Richards, Bill Richards Radio Consulting
"Research shows this is a hit that was missed. It deserves to come back & we are trumpeting its return."

THE RETURN OF THE LEGEND

Rob Roberts, WHYI
"This truly is a mass appeal hit song that took a minute to research. We are now 400+ total spins & continue to see top research & requests from our core."

Dan Bowen, STAR94
"We almost gave up...But we're glad we didn't. Top 10 callout overall, showing 3.9 out of 4.0 for two weeks in a row with Star listeners."

BJ Harris, WFLZ
"We've played this over 600x and research continues to grow. 35 plays per week. This is the definition of a hit."

Jeff Kapugi, KSLZ
"This is a smash that constantly researches (#7 overall) in callout. 45 plays a week. If you're not playing this, you're missing a song you can own."



COLUMBIA

Produced by Michael Mangini
Executive Producer: Ross Elliot
Management: David Sonenberg
for DAS Communications Ltd.

www.imani-coppola.com

"Columbia" Reg. U.S. Pat. & Tm.
Off. Marca Registrada./© 1998
Sony Music Entertainment Inc.

Re-added at:
WALC
WSHE

THE
BOX

Hundreds Worship Big Giant Head Shrine



In another in a series of wacky morning DJ stunts, WKRQ (Q102) Cincinnati morning funsters Brian Douglas, left, and John Jay, right, apparently using valuable time that should have been spent on show prep, designed and built a shrine to their idol, talk-show hostess Rosie O'Donnell, constructed entirely of jellybeans. (O'Donnell's head shown actual size.)

Suspicious Fire Singes Feather's Car

Coincidence or random act of vandalism? Only four months in town, and just days after his debut book (5.5-8.8) hit the streets, rhythmic top 40 KISV (Kiss 94.1) Bakersfield, Calif., PD Mark Feather was wrapping up a staff meeting when the fire department arrived on the scene. Seems someone had entered the employee parking lot, doused Feather's car with gasoline, and set it ablaze. Luckily, a nearby business owner saw the flames and quickly extinguished the fire. Arson officials are investigating.

BIG RELAUNCH FOR WNSR

After another in a series of big-budget Chancellor launch parties (this time at the Renaissance Hotel in Times Square), WNSR New York becomes adult top 40 "Big 105" under PD Adam Goodman. Here's the lineup: Danny Bonaduce in mornings, with current sidekick Jackie Puritan; Karen Carson moves from afternoons to mid-days; former morning co-host Doug O'Brien moves to afternoons, followed by Beth Bacall (wife of WKTU p.m. driver Broadway Bill Lee), who's upped from P/T; Brian Key will do overnights. The station slogans: "The best mix of the '80s and '90s" and "The New York mix that picks you up and keeps you going."

According to VP of programming Steve Streit, here's a typical hour: Gloria Estefan, "Turn The Beat Around"; Sugar Ray, "Fly"; Celine Dion, "Because You Loved Me"; Dan Hartman, "I Can Dream About You"; Des'ree, "You Gotta Be"; Blues Traveler, "Run Around"; Melissa Etheridge, "Come To My Window"; OMC, "How Bizarre"; Men At Work, "Down Under"; Shawn Colvin, "Sunny Came Home"; Genesis, "Throwing It All Away"; and Madonna, "Holiday."

TOP 40 VET GOES COUNTRY

WNCI Columbus, Ohio, GM Dave Robbins adds GM duties for sister country WCOL FM and N/T WFII, replacing current WCOL GM (and former top 40 programmer) Dave Van Stone, who becomes GM at rival sports/oldies combo WBNS-AM-FM.

PROGRAMMING: STAN DELIVERS

Stan Atkinson, PD of Clear Channel's Grand Rapids, Mich., combo, AC WOOD-FM and top 40 WVTI (196), heads to the long-vacant PD slot at soft AC WLTQ Milwaukee. Packages to Clear Channel VP of programming John Rob-

erts in Austin, Texas, whose KHFI welcomes Zak Michaels from the Jacor Cincinnati cluster as commercial production director, replacing Mike McKay, now doing afternoons.

Modern adult KQMB (Star 102.7) Salt Lake City hires Mark Waldi for PD/mornings from mornings at AC KCIX Boise, Idaho.

Modern adult KBBT (the Beat) Portland, Ore., PD Michael Newman exits. Dave Numme, PD of sister KUFO, is handling the Beat for now. Newman will continue to consult his former station, rhythmic KDON Salinas, Calif., while awaiting his next gig. Call 503-579-1728.

Rob Farina, PD of CHUM Group's N/T and adult top 40 combo CFRA/CKKL Ottawa, Ontario, is the new PD of adult top 40 CHUM-FM Toronto, replacing new GM Brad Phillips.

AC WMMX Dayton, Ohio, PD Mary Franco, who just closed on a new house this week, has left the building. Franco, who also programmed crosstown WGTZ, is available now at 937-320-9670 or 937-434-2203. OM Jeff Ballentine regains PD responsibilities for both WMMX and R&B sister WBTT (the Beat). Down the hall, 20-year station vet Tom Carroll, OM of sister rock WTUE and modern WXEG, also exits.

AC KESY Omaha, Neb., becomes modern-leaning hot AC Star 104.5 under Kurt Owens, PD of jazz sister KOSJ, who will oversee both operations. The KESY calls and format move to KOSJ (97.7), as Star 104.5 becomes KSRZ.

After a year with the company, veteran programmer Jay Stone (ex-KIKI Honolulu) is named to the newly created position of program consultant, overseeing the three Honolulu properties of Jerry Clifton's New Planet Radio: hot AC KRTR (Crater 96), oldies KGMZ, and top 40 KXME (Xtreme Radio @ 104.3), where MD/afternoons Jamie Hyatt is upped to interim PD. Stone needs a night jock on Xtreme to replace Big Mama, who exits.

A deal was still brewing at press time for Duncan Payton, PD of hot AC KRUZ Santa Barbara, Calif., to be named PD of modern AC KMXB (Mix 94.1) Las Vegas, replacing Mike Marino.

PEOPLE: STOECKEL ADDS STRIPES

KLLC (Alice@97.3) San Francisco MD Julie Stoeckel adds APD stripes.

WPOW (Power 96) Miami PD Kid Curry inks twin-brother mixers DJ Richie Rich and DJ Ray, formerly of WJHM (102 Jamz) Orlando, Fla., for late nights as the Babalu Bad Boys, replacing Dimas Martinez, now doing nights at WKTU New



TOP 40 TOPICS BY SEAN ROSS

212-536-5264 • sross@billboard.com

Dion: Her Chart-Appeal Will Go On

Even before Celine Dion was through with the singles from her last album, there was a backlash forming in some quarters. A year ago, shortly after an awards-show performance, I recall having dinner with some civilian friends who launched, unprompted, into a tirade about Dion—particularly her heavily emotive performance style and how overexposed they felt she was. Later that night, we ended up at a card game with more friends who needed only the mention of Dion's name to unleash a nearly identical set of complaints.

Even at peak form, Dion was exhibiting the warning signs of Michael Bolton-ization, the condition where so much damage has been done to a mainstream pop artist's image that it doesn't matter how good his or her next record is. Some artists release the wrong singles during their hit streak and, while still garnering airplay, create a festering resentment that doesn't hurt them until much later. Dion, however, was probably penalized for nothing more than her own ubiquitousness.

At least that was the case until "Tell Him" came out last year. PDs who viewed adult top 40 as defined by Sugar Ray and matchbox 20 were poised to consign Dion to soft AC limbo, and by releasing a lush MOR duet with Barbara Streisand, Dion seemed to provide them with the ammunition. After the decision not to keep working "Tell Him" at top 40, or to issue it as a commercial single, I asked one major programmer what his reaction was to "My Heart Will Go On." "It's an AC record," he said. "She's an AC artist." And Billboard's Chuck Taylor, an avid Dion fan, recalls hearing many similar PD comments at the Airplay Monitor Radio Seminar last fall.

Having a No. 1 album, as Dion did on the Jan. 17 Billboard 200 chart, won't always reverse that sort of perception—Bolton continued to chart hit albums well after his troubles had started at radio. But sales combined with a hit song in a blockbuster movie have done a lot to change radio's mind. For the last two weeks, "My Heart Will Live On" has posted huge single-week gains at mainstream top 40, some of which is probably due to some PDs who'd initially resisted Dion catching up with the audience.

At the rate at which we turn cynical about artists these days, there's almost nobody who's immune from some sort of attack on artist-image grounds. In late fall, there were PDs who expressed concern that Hanson and Spice Girls were already negatives from an image standpoint, despite the fact that their current singles were high-request items. So anybody whose appeal is considered too adult or too

young is vulnerable. Then there are the artists who are consistent forces at R&B but have to fight with each new single as if they had never crossed over before and the artists who've just broken through with one mega-hit who are immediately labeled one-hit wonders.

So even as PDs gripe about "disposable music," it's true that most artists established enough to have any artist image—in someone's eyes—an artist-image problem to go with it. The only current exception at mainstream top 40 may be matchbox 20, since "3 AM" made itself too big to ignore, even before PDs were done with "Push," meaning that there wasn't any real opportunity for the usual round of "but the last one is still so big, and I'm not sure if they're an artist" objections to take place.

Programmers would argue that they're not the ones who've turned on Dion or Hanson or Spice Girls or any other act. They'd attribute that action to their audience. And as the opening story illustrates, some backlash has occurred, at least anecdotally. That notwithstanding, "I Will Come To You" and "Spice Up Your Life" were, despite PDs' trepidations, huge phone records. And album sales for the acts in question remain formidable. Even if the first Spice Girls album was bigger, "Spiceworld" was still a No. 6 album. No artist with a top 10 album, or, in Dion's case, a No. 1 album, is universally disliked. At worst, a huge-selling act is polarized, and polarization didn't keep anyone off Aqua's "Barbie Girl"—at least initially.

So is the solution to not only stop bashing veteran artists but to start giving them the benefit of the doubt because they are, after all, familiar? WXKS-FM (Kiss 108) Boston does pretty well with that policy, but for most stations it might be enough to set the artist-image issue aside for a while, rather than allowing it to obscure a song's other merits.

As for Dion's future prospects, her album cut "To Love You More" has floated around top 40 and AC as a secret-weapon record for two years, proving that she's still an artist who appeals to actives, even without a hit movie attached. Down the line, I know a lot of industry folks who'd love to see her venture back into the uptempo dance or pop world next time around. Even if she doesn't, the success of "How Do I Live"—essentially a Dion ballad, regardless of who sang it—suggests that the audience's appetite for big production ballads never wavers. Then again, the audience's demands for dance, R&B, and modern rock have been surprisingly stable, too. Only radio's perception of those tastes and the record industry's ability to satisfy them ever change.

York. Felix Sama recently moved up to nights from late nights at Power 96.

Former WPGC-FM Washington, D.C., midday host Cristina Kelly is now doing P/T on top 40 sister WXYV Baltimore. Also, WXYV PD Dr. Dave Ferguson is once again the voice of WPGC.

AC WSNY (Sunny 95) Columbus, Ohio, brings Mark Bingaman, last with KQMB, back to town for MD/afternoons, replacing Bob Nunnally. PD Chuck Knight still has middays open.

Clear Channel's new top 40, KQAR (Q100) Little Rock, Ark., sets its air staff. PD Billy Surf will do afternoons, while Rob Tanner from WZOQ (Zoo 92) Lima, Ohio, teams with Patti Hatchett from WEGR (Rock 103) Memphis for mornings. Lindi Vaughn transfers from overnights at KHFI to middays; Chase (aka Pat) Murphy arrives from nights at KIXY San Angelo, Texas, for the same shift; and market native Shea Wells is doing overnights. Meanwhile, at WRVQ

(Q94) Richmond, Va., morning producer Travis Dylan is sharing Surf's former MD duties with P/T Paul Madison, who's also covering nights.

Modern adult WMBX (Mix 102.3) West Palm Beach, Fla., makes P/T Chrissy Cavotta official in nights, replacing Scott Davidson, now doing afternoons. . . WWXM (Mix 97.7) Myrtle Beach, S.C., midday jock Doug Kelly exits for a TV career and his own production biz.

WNND (Windy 100) Chicago hires Shannon Babcock to fill the long-vacant promotion director slot. Babcock was most recently senior manager of marketing and corporate sponsorship at Sport and Social Clubs of the U.S.

WWZZ (Z104) Washington, D.C., night jock Jojo Morales exits. Call 703-502-7931 or E-mail z104jojo@aol.com.

Chancellor AC KBIG Los Angeles needs an experienced morning producer. Packages to VP of programming Steve Streit.



WHAT'S NEWS

by Theda Sandiford-Waller

212-536-5053 • theda@billboard.com

Island Set To Sign Sigerson

MUSICAL CHAIRS: By the time you read this, the ink should be dry on Davitt Sigerson's new contract as chairman of Island Records. Look for A&M Associated Labels head Johnny Barbis to return to Island as president. With the new leadership in place, expect a few staff announcements in the coming weeks.

Walt Disney Music Group has finally announced a chairman, longtime artist manager Bob Cavallo, who handles Alanis Morissette and Green Day. Despite having recently re-upped with Disney's Hollywood Records, senior VP of promotion John Fagot will exit the label in February. Columbia L.A. local Dan Hubbard will replace Fagot at Hollywood. Former Geffen rock national Ted Volk heads to Disney's Mammoth Records as senior VP.

MCA promotes Paul Orescan to VP/marketing director. . . Sorry to report that Ichiban has laid off 12 of its 30 staffers, including VP of pop promotion Randy Saad. He can be reached at 770-804-9112. . . Mike Rittberg segues from A&M to Warner Bros. as VP of rock promotion. . . Former Geffen promo dude Alex Coronfly heads to Reprise as national director of triple-A promotion.

RCA names former Radioactive national alternative promotion director John DiMaio national manager of alternative promotion. . . William Marion joins Sire's promotion department based in Atlanta. . . Former EMI staffer Scott Gordon lands at N2K Encoded Music as national promotion director. . . Geffen hires promo vet Tom Bobak for Baltimore/D.C. promo chores and also hires former A&M Chicago local Sharon LePere. . . Danny Yarbrough succeeds Paul Smith as chairman of Sony Music Distribution. Yarbrough was president of Sony Music Distribution. . . Val Starr leaves McClusky to join the indie promotion company Rotations as senior VP/director of operations. . . Former RCA VP of national promotion Geary Tanner can be reached at 203-655-8501 or via E-mail at gtanner255@aol.com.

Congratulations to Virgin senior VP Michael Plen and wife Catharina on the Jan. 13 birth of their son, Everett Masters Plen, who weighed in at 5 pounds 9 ounces.

MCA's Bobby Shaw will be the featured DJ at the Roxy's grand reopening Jan. 24 in New York.

IN INK: Columbia inks a P&D deal with New Jersey-based rap indie Roc-A-Bloc Records. The label was founded by producer David Willis (aka SKI), who was once a member of the group Original Flavor. The first release will be by the Sporty Thiev\$ Street Cinema in April.

DID YOU KNOW: Despite showing up on countless worst-dressed lists, Mary J. Blige is starting her own clothing line, which she calls "MJB New York". . . Novelist Elmore Leonard will feature Aerosmith in his next book, "Be Cool." Leonard wrote "Get Shorty" and "Run Punch," adapted by Quentin Tarantino into "Jackie Brown". . . Fiona Apple will perform the title song to the "Godzilla" movie that will be released in the spring. Apple's dad is actor Brandon Maggart, who was seen in "The World According To Garp". . . Shawn Colvin is expecting a baby in August.

The Monkees' Michael Nesmith is developing a script based on "The Hitchhiker's Guide To The Galaxy" for Hollywood Pictures. . . Elton John's "Candle In The Wind 1997" and Puff Daddy's "I'll Be Missing You" were not eligible for the Grammys' song of the year category because both tracks are rewrites of old songs. . . Stanford University recently offered a free academic seminar on the music of Bob Dylan. Meanwhile, the University of Wyoming is offering a course on the life of Tupac Shakur. . . Miramax Films has purchased the distribution rights to Master P's film comedy about a South Central L.A. cell-phone scam, "I Got The Hook Up." Master P's first self-financed film, "I'm Bout It," sold 250,000 copies as a straight-to-video release.

Jock Dyes Shirt To Match Cheeks



KRBE Houston midday personality Michele Fisher, center, appears to have that special glow that only an Aerosmith love sandwich can provide. Pictured, from left, are Aerosmith's Joe Perry and Steven Tyler, Fisher, and Aerosmith's Brad Whitford and Tom Hamilton.

RADIO CONCERT MONITOR

DATE	CALL LETTERS	EVENT	SCHEDULED TO APPEAR
Jan. 24	WALC St. Louis	First Anniversary	Chantal Kreviazuk, Billie Myers
Jan. 30	WPOW (Power 96) Miami	Hialeah Spring Fest	Kinsu, Brian McKnight, Jay 'Z, more
Jan. 31	WKTU New York	Saturday Night Fever 20th Anniversary	Bee Gees, Yvonne Elliman, KC & the Sunshine Band, Kool & the Gang, Tavares, Denny Terio, Trampmps, more
Feb. 14	WIOQ (Q102) Philadelphia	Broken Hearts Ball	TBA

Let us monitor your event! Kevin Carter: 213-525-2303 or E-mail KCarter@billboard.com

Puff Daddy Knows The Way To San Jose



A bunch of otherwise-semi-sane West Coast radio folks loitering on a San Jose, Calif., sidewalk on their way to see Puff Daddy. Pictured, from left, are KCAQ (Q104.7) Oxnard, Calif., PD Dan Garite and wife Erica; Arista's Joe Reichling; XHTZ (Z90) San Diego MD Dale Soliven and air talent Big Daddy; KCAQ's DJ Devine; KHTY Santa Barbara, Calif., marketing director Jeff Miller; and KCAQ MD Jacque James.

Malibu Barbie Built Like Brick Dreamhouse



On the way to the store for a loaf of bread, MCA recording act Aqua was nice enough to stop by and say hi to WNKS (Kiss 95.1) Charlotte, N.C., PD Brian Bridgman. Pictured, from left, are Aqua's René Dif, Søren Rasted and Lene Nystrøm, Bridgman, and Aqua's Claus Norreen.

EDITOR: SEAN ROSS
 MANAGING EDITOR: KEVIN CARTER
 DIRECTOR OF CHARTS: THEDA SANDIFORD-WALLER
 ASSOCIATE DIRECTOR OF CHARTS: STEVEN GRAYBOW
 WRITER/REPORTER: DANA HALL
 CHART PRODUCTION MANAGER: MICHAEL CUSSON
 ASST. CHART PRODUCTION MANAGER: ALEX VITOUIS
 EDITORIAL PRODUCTION MANAGERS: BARRY BISHIN, MARCIA REPINSKI
 EDITORIAL PRODUCTION: SUSAN CHICOLA, MARC GIAQUINTO
 SARAH JOHNSON, MARIA MANLICJIC
 COPY EDITOR: CARL ROSEN
 ADVERTISING PRODUCTION MANAGER: LYDIA MIKULKO
 ASSOC. ADVERTISING PRODUCTION MANAGER: CINDEE WEISS
 ART DIRECTOR: RAY CARLSON
 ADVERTISING PRODUCTION ARTIST: SHIRA HALFON

GENERAL MANAGER: JON GUYNN
 ACCOUNT MANAGERS: JEFF SOMERSTEIN, SHARON WHITE
 ADVERTISING SERVICES MANAGER: ALYSE ZIGMAN
 SALES ASSISTANTS: EVELYN ASZODI,
 ERICA BENGITSON, CANDACE GIL

EDITORIAL ADVISER: TIMOTHY WHITE
 PRODUCTION DIRECTOR: MARIE GOMBERT
 DIRECTOR OF MARKETING: ELISSA TOMASETTI
 CIRCULATION DIRECTOR: JEANNE JAMIN



PRESIDENT: HOWARD LANDER
 SENIOR VP/GENERAL COUNSEL: GEORGINA CHALLIS
 VICE PRESIDENTS: KAREN OERTLEY, ADAM WHITE
 DIRECTOR OF STRATEGIC DEVELOPMENT: KEN SCHLAGER
 BUSINESS MANAGER: JOELLEN SOMMER

©1998 BPI Communications
 1515 Broadway, New York, NY 10036 212-764-7300
 5055 Wilshire Blvd., 7th floor, Los Angeles, CA 90036 213-525-2300
 For subscriptions call: 800-722-2346

Airplay Monitor reporting panels are based solely on a station's musical content.

Celine, LeAnn Have Modern AC Again Contemplating That Line In The Sand

Continued from page 1

"There's the old saying that you can't get hurt by what you don't play, but this format, ideally, should be compelling and interesting enough to selectively lead your audience into the future, which means taking the occasional musical chance.

"I see stations niching themselves too far into this modern adult box when there may not be a box there to begin with or the box may not be large enough to attract a mainstream, mass-appeal audience," Johnson adds. "I see many stations potentially leaving a lot of shares on the table, trying to duplicate the success of others by mirroring their playlist."

"Not only should we not worry about staying too hip, but occasionally we should purposely step outside the box and play something that could open new avenues for us," says KLLC (Alice 97.3) San Francisco PD Louis Kaplan. Last year, Alice played "The Holy River" by ♣. "It was different, and it opened up the opportunity to play ♣ again if we wanted to, without freaking out our audience," he says. "The problem is, the narrower we tend to get, the easier it becomes to clam up. It's important for us to take the occasional educated gamble. Artists like 311 and Sublime blazed the trail for the Sugar Rays of the world. We can't survive just on a diet of Sarah McLachlan, Shawn Colvin, and Indigo Girls."

WALC (Alice@104.1) St. Louis PD Bob Davis, who got a lot of attention last fall for playing Robyn's "Show Me Love," thinks many modern adult PDs second-guess themselves too much. "These stations are targeting women, and many of them happen to be programmed by men, who are concerned about stuff that men are concerned about," he says. "Women like the new Savage Garden song. It speaks to them. They also like Robyn, and they also like 'Interstate Love Song' by Stone Temple Pilots. Why ignore something if it works?"

Jacobs Media consultant Dave Beasing believes that "some PDs in this format are setting a standard that their audience may not agree with. Some seem to be more worried about the reaction of their peers rather than their audience. [But] it does worry me to see some modern adult PDs who come from a more mainstream top 40 background still applying the 'play the hits' philosophy a little too literally to modern adult, because they run the risk of becoming perceived as the second or third top 40 rather than the first-choice modern adult."

"Modern adult is not a department store like top 40. We're the jeans store next door," Beasing says. "If we tried to carry the full line of products, we would become another department store. You risk becoming perceived as the third or fourth department store, and, if you've been to the mall lately, the third or fourth department store isn't doing very well."

"A record may test well with your audience, but remember, that's only a quantitative measurement, not qualitative; i.e., does it fit? 'Stairway To Heaven' and 'Forever And Ever, Amen' probably also test with your core," he adds.

AN ISSUE OF TITANIC PROPORTIONS

When discussing what allegedly "fits" at modern adult, somehow it never takes very long for Celine Dion's name to come up. Dion was at issue when KYSR (Star 98.7) Los Angeles experimented with one of her recurrences last year. Now, her latest single, "My Heart Will Go On," happens to be an emotional touchstone, prominently featured in this season's female mega-movie, "Titanic." Let the hand-wringing begin.

KFMB's Johnson is not only playing "My Heart Will Go On" but has produced a custom version complete with movie dialogue drops, à la last year's Jerry Maguire Remix of Bruce Springsteen's "Secret Garden." As we speak, Star's version is spinning an unprecedented 80-plus times a week and racking up more than 60% of KFMB's total weekly requests.

"In this case, it was time to forget the song and forget the artist," Johnson says. "We wanted to create an emotional attachment to our listeners, to relate to them on their level, and right now, nothing relates to them more than this movie. [However], when you play any record 75 times a

week, no matter what it sounds like, it affects the sound and the perception of your station. It's important how the air talent presents any song that's considered out of the ordinary and what you program around that song."

Beasing suggests his clients play "My Heart" as a morning-drive feature, tying it in with the success of the movie. "Tracy Johnson did the right thing by creating a soundtrack version and thus, capitalizing on the event, avoided the situation of just dropping the album version of the record into a 30-minute music sweep, trying to convince yourself it fits in with everything else," he says.

Consultant Randy Lane reports that, although his client stations aren't playing Dion, many have begun fielding requests for that song based on its event status.

"We have the Celine argument at least once a month," says Kaplan. "She's definitely our 'line in the sand' artist, but, based on the 'Titanic' exposure, we're taking a second look at that situation."

"It's tough, because you become something different when you play certain records, and any big image artist is bound to carry some baggage, both good and bad," adds Kaplan. "When you decide to play a certain artist, you think, 'People are going to hear this and maybe think something about my station that they may not have thought before, whether they find that's good or bad or just different.'"

IMAGE IS NOTHING?

Artist image is an issue even for those PDs who are willing to bend the rules a little. WALC's Davis has avoided playing Dion or Elton John. "I didn't even play the Jerry Maguire Remix of 'Secret Garden,'" he says. He also won't play Hanson or Spice Girls, whom he considers too young-skewing. "Ideally, I like to play artists who have some sort of rock pedigree or an alternative background."

So why Robyn and Savage Garden? "They're pop artists who aren't already painted as mainstream AC artists like Celine," he says, "which doesn't take anything away from her and doesn't rule out ever playing that or any other record."

Musical leeway for modern adult stations is, according to Lane, often defined by the texture of the individual marketplace. "Some can be more pop than others, like KZZP Phoenix, a modern-leaning AC that's about 90% modern adult but is playing some pop songs," he says. Another important consideration: the frequency's history. "You would have an easier time with pop and adult titles if your modern adult station evolved from a traditional AC rather than a completely different format."

SHORTAGE, WHAT SHORTAGE?

The modern adult musical landscape is markedly different now than just six months ago, says Lane. "Some of the uniqueness of the format's music has waned, mainly due to the fact that much of it has now been assimilated into other, mass-appeal, hit-oriented formats like AC and top 40," he says. "During the first year of the existence of modern adult, you'd see modern rock hiding from the very songs that they now play."

Beasing doesn't think the product pipeline is drying up. "There's plenty of product available for modern adult that's appropriate," he says. "You have to expand this format without borrowing from existing formats. You must be aware of fresh sounds like Alana Davis, Loreena McKennett, and Barenaked Ladies—artists not already owned by somebody else or, more important, carrying excess baggage."

Beasing also cites the modern adult format opening up audience acceptability to new sounds like ska, à la the Mighty Mighty Bosstones. Top 40 inevitably ends up borrowing most of this cool stuff, but if modern adult gets there first, it's still able to use it. For example, he says, "Are You Jimmy Ray" by Jimmy Ray is as pure pop-, top 40-sounding as anything out there, but if you sit back and allow product like this to be exposed by a pop station first, you lose. Be aware of what's available."

"This audience has always been a moving target," says KFMB's Johnson. "Call them musical cycles or evolving tastes, listeners don't stand still, and the station that does will find itself falling behind."

MONITOR PROFILE

Waitekus Turns Belief In Old-Fashioned Top 40 Into A 10 Share In The Quad Cities

I've always believed in the top 40 format," says Tony Waitekus, PD of WHTS (All Hit 98.9) Davenport, Iowa, where he's currently sitting in second place 12-plus after a four-book trend that has taken him 6.3-7.4-8.3 to his current 10 share, just behind sister country WLLR. Waitekus, widely known in the industry as a guy who doesn't move around a lot, arrived in the Quad Cities in May '96 after 19 years at top 40 WCIL Carbondale, Ill., 17 of those as PD. That was followed by a brief stint as MD and later PD of crosstown rock outlet WTOO.

"We've all seen top 40 go in and out of favor, and not so much with the audience, but with many GMs and PDs who chose to jump on bandwagons rather than look at their own audience," Waitekus says. "The new information age we're living in has done nothing but exacerbate false trends. Somebody somewhere writes an article that may contain some degree of truth, and, thanks to E-mail, faxes, and overnight services, information now has the ability to

in the Midwest who can still sing the old WLS Chicago jingles to this day. There's a distinct difference between hype and having a well-produced sound."

Pesky issues like perceived artist image have no place in the mind of pop music aficionado Tony Waitekus. "Thank God for artists like Hanson, Spice Girls, and Robyn," he says of chart-topping acts of that ilk that have been the subject of ongoing intra-industry derision. "It's another classic case of everybody hates them but the audience." In the case of programmers feeling forced or embarrassed to play certain artists, Waitekus has a solution: "If you're not passionate about the music you're playing, what are you doing in this format? If a PD and the jocks can't be passionate, how in God's name can you expect your audience to be? Passion is infectious and, when transmitted to your audience, is an important ingredient of top 40's success. Any true top 40 programmer does not paint themselves into a corner. I know what I have to do—play the hits."

With that thought firmly embedded, here's a recent 3 p.m. hour on All Hit 98.9: Alanis Morissette, "You Learn"; Savage Garden, "Truly Madly Deeply"; Salt 'N' Pepa, "Shoop"; Aerosmith, "Pink"; Hanson, "Where's The Love"; Smash mouth, "Walkin' On The Sun"; She Moves, "Breaking All The Rules"; Lisa Loeb, "I Do"; Ace Of Base, "All That She Wants"; Chumbawamba, "Tubthumping"; Cardigans, "Lovefool"; Monica, "For You I Will"; Billie Myers, "Kiss The Rain"; and Stone Temple Pilots, "Interstate Love Song."

After kicking off morning drive with the syndicated Bob and Tom show, Waitekus hits the air for his two-hour, low-sweat, PD shift. Station vet Cori Stone handles 11 a.m.-3 p.m., followed by Malibu Mark Manuel. "Mark basically does a morning show in the afternoon and does an embarrassing amount of show prep," says Waitekus, who relies on MD/night jock "Red Hot" Brian Scott as his right-hand man. Overnights is covered by local fave Bryan Ross and a cast of weekenders that includes Kevin Walker, Cory Degroot, Joni Abbott, and Bret Carey. When asked if he does regular aircheck sessions with his staff, Waitekus laughs and says, "It all depends on whether the aircheck machine in the studio is working that week." The bottom line: "The hallways are buzzing because this staff cares about winning. They believe in themselves and in this station, and that makes all the difference in the world."

A large piece of the WHTS brain trust is consultant Mark St. John of Zapoleon Media Strategies. "We talk every week, and I feel that he trusts my instincts," says Waitekus. "We're able to talk freely without intimidating each other. I don't think we could have a better working relationship."

As a 20-year-plus student of radio, Waitekus has seen trends come and go. "I understand that a radio station has now become a commodity to be bought and sold among large corporations," he says. "Everything today comes down to getting ratings and making money, and that's still totally dependent on the people you have at the local level. Despite everything else, people have always been and will continue to be our most important asset."

KEVIN CARTER



Tony Waitekus
Program Director
WHTS Davenport, Iowa

'Passion is infectious and an important ingredient of top 40's success'

snowball into a perceived truth that, upon closer examination, may not be true at all." One of those supposed truths, he adds, was the death of mainstream top 40. "First we heard top 40 was rap, then it was alternative, then hot AC, then dance, then it was dead. Golly gee-whiz, a year later it comes roaring back, and it's not because the audience was so fickle; it's because station management was."

WHTS, owned by Segue Communications (nice, radio-friendly name), was formerly top 40 WPXR and managed to pull a 6.3 share in Waitekus' first book. The station is operating under an LMA with the market-dominant Quad City Radio Group, owner of country WLLR (No. 1); classic hits KCQQ (tied for No. 2); oldies KUUL (7.6 share); N/T WOC-AM (7.3); and hot AC KMXG (6.2), which is tied with sister adult standards WKBK (6.2). As the mass-appeal top 40, WHTS has become the emotional centerpiece of the group. "Everybody shares with us," he says. "We're the department store."

When Waitekus arrived, "the jocks here were all very good, so I made no changes there. What I did think we needed were better production elements to give us more of a produced sound," he says. And at the height of the stripped-down, "No-Hype '90s," Waitekus expelled a breath of fresh air by enthusiastically commissioning a, gulp, new jingle package. "I still believe that there is no tool as powerful as using music to sell your station name," he says. "I guess some people just don't understand the power of a musical logo. Ask anybody

Strongest Increase In Airplay This Week

MAINSTREAM	INCREASE IN PLAYS
CELINE DION • My Heart Will Go On (550 MUSIC)	+1276
WDJX +46, WWHT +40, KHKS +33, KSLZ +32, KZZU +31, WRVQ +30, WFLZ +29, KKMG +28, WKCI +28, KZHT +28	
JIMMY RAY • Are You Jimmy Ray? (EPIC)	+646
KZZU +33, WKSZ +29, WGTZ +26, WFLY +24, KBKS +23, WDJX +23, WZPL +20, WWHT +19, KRUF +19, WWSR +19	
ALL SAINTS • I Know Where It's At (LONDON/ISLAND)	+510
WGTZ +26, KSLZ +24, KKMG +22, WBLI +20, WKSZ +18, WWSR +17, WAEB +16, WQSL +15, WJBQ +15, WVKX +14	
BILLIE MYERS • Kiss The Rain (UNIVERSAL)	+496
WGTZ +38, KKMG +20, WXIS +19, WDJX +19, KKRZ +19, WWSR +18, WNNK +18, KRUF +17, WAEB +17, KHOM +16	
'N SYNC • I Want You Back (RCA)	+465
WKSZ +27, KZQZ +25, KQKQ +22, KHOM +21, WXIS +21, KIIS +18, WKSS +17, WXXL +17, WWZZ +16, WNNK +15	
K-CI & JOJO • All My Life (MCA)	+323
KZQZ +27, WKSZ +20, WZJM +16, WYCR +15, WXXB +14, KRUF +12, WQSL +12, KHKS +12, WHYI +12, KRQQ +12	
SPICE GIRLS • Too Much (VIRGIN)	+307
WDJX +27, WVKX +22, WAPE +21, WFLY +18, KKRZ +16, WSSX +15, KRBE +15, WDDJ +14, WHYI +14, WZYP +13	
LOREENA MCKENITT • The Mummers' Dance (QUINLAN ROAD/WARNER BROS.)	+258
WBHT +24, WGTZ +20, KSMB +17, WDCG +15, WWSR +13, XHTQ +12, WQZG +10, KJYO +10, KBKS +9, WXLK +9	
GREEN DAY • Time Of Your Life (Good Riddance) (REPRISE)	+226
WQSL +30, WGTZ +25, KSLZ +14, WWHT +12, WBLI +12, KHOM +10, KMXV +9, WNNK +9, KKLQ +9, WAEB +7	
SAVAGE GARDEN • Truly Madly Deeply (COLUMBIA)	+222
WXYV +31, WGTZ +30, WFLY +28, WJBQ +18, WVKX +15, KZQZ +14, KHKS +14, KKMG +13, WNCI +13, WLAN +11	

RHYTHMIC TOP 40	INCREASE IN PLAYS
CELINE DION • My Heart Will Go On (550 MUSIC)	+308
KSFM +40, WDRQ +31, KIKI +29, WIOQ +29, WBBM +29, KZFM +25, WFHN +22, WNVZ +19, KGGI +18, WPOW +18	
MARIAH CAREY (FEATURING BONE THUGS-N-HARMONY) • Breakdown (COLUMBIA)	+188
KIKI +35, KQMQ +32, XHTZ +29, KLUC +28, WHHH +16, WFHN +16, KKSS +11, KDGS +9, KZFM +6, WWXX +6	
USHER • Nice & Slow (LAFACE/ARISTA)	+168
WIKJ +60, WJJS +24, KSFM +20, KZFM +18, WPOW +12, WJMN +11, WNVZ +10, KOHT +8, XBOS +7, KQKS +7	
ALL SAINTS • I Know Where It's At (LONDON/ISLAND)	+128
KSFM +29, KZFM +25, KOHT +24, KGGI +15, WIKJ +10, WFHN +9, WKTU +7, KUBE +7, WIOQ +7, KTFM +5	
BRIAN MCKNIGHT • Anytime (MERCURY)	+121
KSFM +31, KTFM +19, WJJS +17, KOHT +15, WPOW +14, WJMN +13, KCAQ +6, KIKI +3, KGGI +3, KDGS +2	
NEXT • Too Close (ARISTA)	+118
WJMN +26, KBOS +23, KYLZ +14, WHHH +12, KKSS +11, KCAQ +10, WWXX +9, WJJS +8, KGGI +6, KQKS +6	
SWV • Rain (RCA)	+108
KYLZ +30, KQKS +27, KOHT +14, WHHH +13, WIKJ +9, KCAQ +6, KGGI +5, WJJS +3, KKSS +2, XHTZ +1	
PUFF DADDY & THE FAMILY • Been Around The World (BAD BOY/ARISTA)	+106
WWXX +28, KUBE +27, WIKJ +25, KIKI +16, KQMQ +13, WFHN +13, KLUC +10, WNVZ +9, KZFM +8, WPOW +5	
DESTINY'S CHILD • No, No, No (COLUMBIA)	+91
KBOS +17, KOHT +12, WIKJ +11, KKFR +10, KYLZ +9, WHHH +9, KQKS +8, WNVZ +7, KYLD +6, KZFM +5	
SAVAGE GARDEN • Truly Madly Deeply (COLUMBIA)	+86
WIKJ +40, KPRR +19, WIOQ +15, KZFM +7, WDRQ +7, KDON +3	

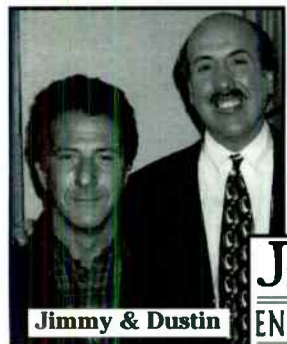
CROSSOVER	INCREASE IN PLAYS
SWV • Rain (RCA)	+325
KYLZ +30, WQHT +29, KQKS +27, WBHU +25, WJBT +25, WERC +17, KRRQ +14, WJMJ +14, WHHH +13, WGZB +13	
MARY J. BLIGE • Seven Days (MCA)	+273
WJMH +44, WJMJ +22, WCKX +20, WJMI +17, WPEG +17, WERC +16, WQOK +16, WKKV +13, WIZF +13, WGZB +12	
MISSY "MISDEMEANOR" ELLIOTT (FEAT. 702 & MAGOO) • Beep Me 911 (EASTWEST/EEG)	+265
WJMH +43, WJMI +26, WERC +20, WQOK +15, WBHU +14, WPHI +14, WROU +14, WPEG +12, WQUE +12, KRRQ +11	
MARIAH CAREY (FEATURING BONE THUGS-N-HARMONY) • Breakdown (COLUMBIA)	+260
KIKI +35, KQMQ +32, WQUE +31, XHTZ +29, KLUC +28, WJMI +23, WJBT +19, WWWZ +18, WHHH +16, WIZF +12	
BRIAN MCKNIGHT • Anytime (MERCURY)	+193
WQOK +22, WJJS +17, WCKX +15, KBXX +15, WPHI +14, WJMJ +14, WJLB +14, WPOW +14, WJMN +13, WERC +11	

MODERN ADULT	INCREASE IN PLAYS
EDWIN MCCAIN • I'll Be (LAVA/ATLANTIC)	+158
WTMX +37, KAMX +32, WPLL +24, WXLE +19, KVSR +18, WPTE +9, WSHE +9, KZZP +8, WBOS +5, WVRV +3	
BEN FOLDS FIVE • Brick (550 MUSIC)	+145
WTIC +28, WALC +20, WBOS +18, WLNK +17, WBMX +11, WXLE +8, KBBT +8, WDCG +8, WLIR +8, KTNP +7	
CELINE DION • My Heart Will Go On (550 MUSIC)	+128
WMXB +37, KDMX +29, KALC +24, WTIC +16, KFMB +13, KZZP +7, WLNK +6, KMXB +2, WMTX +2	
LOREENA MCKENITT • The Mummers' Dance (QUINLAN ROAD/WARNER BROS.)	+114
KOZN +28, WXLE +19, WPTE +15, WDCG +15, KZZO +8, KFMB +8, WPLT +7, KKPN +6, WTIC +6, KAMX +5	
PAULA COLE • Me (IMAGO/WARNER BROS.)	+108
KBBT +24, KAMX +23, WBMX +17, KOZN +12, WKZL +11, WPLT +6, KVSR +5, WPTE +3, WWCD +2, WPLL +2	

ADULT TOP 40	INCREASE IN PLAYS
CELINE DION • My Heart Will Go On (550 MUSIC)	+374
WMXB +37, KDMX +29, WQAL +24, WMLX +22, WKQI +22, WVMX +20, WRQX +17, WOMX +16, WTIC +16, WKTI +16	
JIMMY RAY • Are You Jimmy Ray? (EPIC)	+228
WAKS +24, WPLJ +23, KTNP +21, KPLZ +21, KVSR +19, KHMX +19, WEZB +17, WKQI +16, WQLH +12, WBAM +11	
SAVAGE GARDEN • Truly Madly Deeply (COLUMBIA)	+150
WMXB +21, KSMG +17, KMXB +17, WTIC +17, WVTY +15, WAEV +12, KSTP +11, KVUU +9, KVSR +8, KYSR +5	
LOREENA MCKENITT • The Mummers' Dance (QUINLAN ROAD/WARNER BROS.)	+145
KOZN +28, WPTE +15, WEZB +12, WAKS +9, KBEE +8, KZZO +8, KYKY +8, WKDD +8, KFMB +8, KKPN +6	
THIRD EYE BLIND • How's It Going To Be (ELEKTRA/EEG)	+144
WAEV +21, KOZN +18, WALC +18, KBBT +14, WVTY +12, KPLZ +11, KAMX +9, WPTE +9, KLLC +7, WKDD +7	

ADULT CONTEMPORARY	INCREASE IN PLAYS
CELINE DION • My Heart Will Go On (550 MUSIC)	+205
KIMN +18, WJDX +18, KSFI +17, WAHR +17, WLAC +17, WRRM +13, KESZ +11, KTDY +9, KGBY +8, WBEB +7	
JOHN TESH FEAT. JAMES INGRAM • Give Me Forever (I Do) (GTSP/MERCURY)	+162
WBBQ +17, KGBY +13, WTCB +12, WRRM +12, WLIT +11, KKCW +10, KEZK +9, WGSY +7, WLIF +7, WRCH +6	
SAVAGE GARDEN • Truly Madly Deeply (COLUMBIA)	+138
KEZK +15, WTCB +12, KGBY +9, KLYF +9, WJDX +8, WDEF +7, WMGS +7, WRMF +7, WRVF +7, KIMN +5	
VANESSA WILLIAMS • Oh How The Years Go By (MERCURY)	+99
WASH +24, KBIG +17, WDEF +14, WGSY +12, WLAC +12, WTCB +9, KISC +6, WMGS +5, KIMN +4, KESZ +4	
BACKSTREET BOYS • As Long As You Love Me (JIVE)	+76
KBIG +17, WINK +15, KTDY +11, WDEF +8, WALK +4, WAHR +4, WLIF +4, WLTS +3, WMJQ +3, WYJB +2	
SHANIA TWAIN • You're Still The One (MERCURY)	+76
WMJQ +16, WDEF +8, WMGS +8, WLIT +7, WLIF +7, WLTE +7, WRCH +6, KISC +6, WTCB +3, WLTW +3	

There is only one way to bring your listeners Hollywood's hottest news!



Jimmy Carter
Hollywood
ENTERTAINMENT REPORT

It's what they want... It's what you need... Secure market exclusivity today!

Make your station the place listeners come to for the entertainment gossip they're dying to hear!

- Live Call-Ins
- Custom Promos
- Custom Reports
- Local Sponsorship Opportunities
- Available Monday - Friday



JONES RADIO NETWORK™

Call Michael Henderson Director of Affiliate Sales 303-784-8700

POWER PLAYLISTS

For Week Ending January 18, 1998



WHTZ New York PD: Tom Poleman APP: Kid Kelly MD: Paul Bryant. Playlist for Z100 station.

KIIS Los Angeles PD: Dan Kiele APD/MD: Tracy Austin. Playlist for KIIS station.

KISS 108 Boston PD: John Ivey APD/MD: Kid David Corey AMD: Skip Kelly. Playlist for KISS 108 station.

KRBE Houston PD: John Peake APD: Scott Sparks MD: Jay Michaels. Playlist for KRBE station.

KISS 106.1 Dallas OM: John Cook PD: Mr. Ed Lambert MD: John Reynolds. Playlist for KISS 106.1 station.

Z104 Washington, DC PD: Dale O'Brian APD/MD: Ron Ross. Playlist for Z104 station.

STAR 94 Atlanta PD: Dan Bowen MD: J.R. Ammons. Playlist for STAR 94 station.

WFLZ Tampa OM: B.J. Harris APD/MD: Domino. Playlist for WFLZ station.

KDWB Minneapolis PD: Rob Morris APD/MD: Rich Davis. Playlist for KDWB station.

B94 Pittsburgh OM: Keith Clark PD: David Edgar MD: Laura Lilley. Playlist for B94 station.

Y100 Miami PD: Rob Roberts APD: Al Chio MD: Deidre Poyner. Playlist for Y100 station.

KISS 95.7 Hartford PD: Jay Beau Jones MD: Mike McGowan. Playlist for KISS 95.7 station.

WPST Trenton Sr. VP/Pgm: Michelle Stevens PD: Dave McKay MD: Andy West. Playlist for WPST station.

WNCI Columbus PD: John Dimick APD/MD: Neal Sharpe. Playlist for WNCI station.

Q102 Cincinnati PD: Bill Klapproth. Playlist for Q102 station.

Z100 Portland PD: Ken Benson APD/MD: Tommy Austin. Playlist for Z100 station.

WYII Miami PD: Rob Roberts APD: Al Chio MD: Deidre Poyner. Playlist for WYII station.

WYII Miami PD: Rob Roberts APD: Al Chio MD: Deidre Poyner. Playlist for WYII station.

POWER PLAYLISTS

For Week Ending January 18, 1998



Playlists supplied by Broadcast Data Systems... Station names are listed in order of their... Broadcast Date Systems

Grid of 20 radio station playlists including MIX 93.3, JAMMIN' 92, XL106.7, ALICE 106, PRO-FM, G105, KISS 95.1, WZPL, MIX 104.1, KISS 106, WBLI, KJ103, THE RIVER, WXYV, WIXX, KISS 98.5, KHFI, and WKRZ. Each station listing includes song titles, artist names, and a TW/LW column.

AIRPLAY Monitor SONG ACTIVITY REPORTS



For Week Ending January 18, 1998

Detailed song tracking information for the last 3 weeks for all songs showing increased play this week. Total plays and gain do not include video play. Markets listed in order of population.

Table for MATCHBOX 20, 3 AM (Lava/Atlantic), 3528/141. Includes station data and chart move.

Table for SARAH MCLACHLAN, Sweet Surrender (Arista), 1530/167. Includes station data and chart move.

Table for LOREENA MCKENITT, The Mummers' Dance (Quinn Road/Warner Bros.), 1366/258. Includes station data and chart move.

Table for LUTRICIA MCNEAL, Ain't That Just The Way (Crave), 522/43. Includes station data and chart move.

Table for BILLIE MYERS, Kiss The Rain (Universal), 1904/496. Includes station data and chart move.

Table for N SYNC, I Want You Back (RCA), 828/465. Includes station data and chart move.

Table for NU FLAVOR, Heaven (Reprise), 1620/1. Includes station data and chart move.

Table for JIMMY RAY, Are You Jimmy Ray? (Epic), 1261/646. Includes station data and chart move.

Table for SAVAGE GARDEN, Truly Madly Deeply (Columbia), 4673/222. Includes station data and chart move.

Table for SISTER HAZEL, Happy (Universal), 816/13. Includes station data and chart move.

Table for WILL SMITH, Gettin' Jiggy Wit It (Columbia), 1292/111. Includes station data and chart move.

Table for SPICE GIRLS, Too Much (Virgin), 788/307. Includes station data and chart move.

Table for THIRD EYE BLIND, How's It Going To Be (Elektra/EEG), 1776/92. Includes station data and chart move.

Table for UNCLE SAM, I Don't Ever Want To See You Again (Stonycreek/Epic), 731/96. Includes station data and chart move.

Table for USHER, You Make Me Wanna... (LaFace/Arista), 3602/54. Includes station data and chart move.



POWER PLAYLISTS

For Week Ending January 18, 1998



Playlists supplied by Broadcast Data Systems' Radio Track service. Songs ranked by number of plays in monitored week. Playlists are listed in order of TSA weekly cume, beginning with the highest-cumulative station. Cumes are updated twice weekly following the release of the Spring and Fall Arbitron surveys. The number of stations shown each week varies depending upon space.

Table with 12 columns representing radio stations: WKTU, B96, Q102, JAM'N 94.5, WILD 94.9, POWER 96, WDRQ, KUBE, KGGI, FM102, KTFM, POWER 92, Z90, KS107.5, B95, POWER 102, Z104, KLUC. Each column contains a list of songs and their corresponding chart positions.

ALL SAINTS



I Know Where It's At

Debut **(35)** Monitor Rhythmic Top 40
GREATEST GAINER AIRPLAY

Debut **(32)** Monitor Mainstream Top 40
GREATEST GAINER AIRPLAY

Debut **35*** R&R CHR

Audience Over 11.8 Million

Already On:

WKTU
KIIS
KGGI
B96
WIOQ

KZQZ
WJMN
WWZZ
KHYS
WZJM

KDWB
WFLZ
KUBE
POWER 96
Y100

KSFM
WXYV
KHTS
WKSS
WXLL

KTFM
WNVZ
& MANY MORE

**121,000 SINGLES IN STORE 1/13-
LP ALREADY DOUBLE PLATINUM IN U.K.**



12 ANGRY VIEWERS



©1997 London Records 90 Ltd.

RHYTHMIC TOP 40

POWER PLAYLIST'S

AIRPLAY
Monitor

For Week Ending
January 18, 1998

Playlists supplied by Broadcast Data Systems' Radio Track service. Songs ranked by number of plays in monitored week. Playlists are listed in order of TSA weekly sums, beginning with the highest-ranking station. Curves are updated twice yearly following the release of the Spring and Fall Arbitron surveys. The number of stations shown each week varies depending upon space.



I94

KIKI
Honolulu

PD: Alan Oda
MD: Richie AQUI

	TW	LW
1 Janet, Together Again	64	68
2 Uncle Sam, I Don't Ever Want To See You	61	63
3 Boyz II Men, A Song For Mama	60	58
4 K-Ci & Jojo, All My Love	58	62
5 Will Smith, Gettin' Jiggy Wit It	58	60
6 Born Jamaicans, Send My Love/Send One Y	58	66
7 Somethin' For The People, My Love Is The	51	66
8 Destiny's Child, No, No, No	51	51
9 Da Real One, U Like Pina Colada	48	47
10 Mariah Carey, Breakdown	48	13
11 Kai, Say You'll Stay	47	68
12 Shaggy, Sexy Body Girls	46	48
13 Billy Lawrence, Up & Down	44	57
14 Allure, Last Chance	44	43
15 Hanson, I Will Come To You	43	48
16 Celine Dion, My Heart Will Go On	43	14
17 L'Ann Rimes, How Do I Live	40	41
18 Faceless, Best Thing In My Life	37	38
19 N-Trance feat. Rod Stewart, Do Ya Think	27	44
20 Dru Hill, 5 Steps	27	21
21 Rome, Crazy Love	24	22
22 Lutricia McNeal, Ain't That Just The Way	24	18
23 Puff Daddy, Been Around The World	22	6
24 Wyclef Jean, Gone Till November	21	18
25 Queen P, All My Love	19	25
26 Usher, Nice & Slow	18	26
27 Kimsu, The Hop	15	15
28 Somethin' For The People, All I Do	12	0
29 Magoos And Timbaland, Luv 2 Luv U	12	10
30 Los Umbrellos, No Tongo Dnoro	11	12
31 Mark Morrison, Return Of The Mack	11	14
32 Chumbawamba, Tubthumping	11	34
33 Backstreet Boys, Quit Playing Games	10	5
34 Backstreet Boys, As Long As You Love Me	10	42
35 Angelina, The Tide Is High	10	9
36 The Notorious B.I.G., Mo Money Mo Problems	10	9
37 Mary J. Blige, Everything	10	8
38 Usher, You Make Me Wanna	10	8
39 Nu Flavor, Sweet Sexy Thing	9	7
40 Sugar Ray, Fly	9	9

HOOSIER 96.3

WFFF
Indianapolis

PD: Scott Wheeler
MD: Carl Frye

	TW	LW
1 K-Ci & Jojo, All My Love	54	54
2 Usher, You Make Me Wanna	54	57
3 Janet, Together Again	51	51
4 Uncle Sam, I Don't Ever Want To See You	49	52
5 Destiny's Child, No, No, No	48	37
6 LSG, My Body	46	48
7 Missy "Misdemeanor" Elliott, Sock It 2 M	44	54
8 K.P. & Envy, Swing My Way	42	42
9 Will Smith, Gettin' Jiggy Wit It	42	43
10 Magoos And Timbaland, Luv 2 Luv U	41	42
11 Janet, Together Again	41	42
12 Queen P, All My Love	38	36
13 Mariah Carey, Breakdown	38	22
14 Somethin' For The People, My Love Is The	38	35
15 Erick Sermon, Keith Murray & Redman, Rapper's	36	33
16 Backstreet Boys, As Long As You Love Me	35	36
17 Erykah Badu, Tyrone	35	38
18 Total, What About Us	35	35
19 Robyn, Show Me Love	34	35
20 Boyz II Men, A Song For Mama	34	27
21 Mary J. Blige, A Dream	29	30
22 Brian McKnight, Anytime	27	31
23 Jon B., Are U Still Down	26	33
24 Mase, Feel So Good	23	26
25 Dru Hill, 5 Steps	22	26
26 SWV, Right	21	8
27 Spice Girls, Too Much	18	0
28 Mariah Carey, Honey	17	16
29 Dru Hill, We're Not Making Love No More	17	18
30 The Notorious B.I.G., Mo Money Mo Problems	15	16
31 Master P, Make 'em Say Ugh	15	12
32 Busta Rhymes, Dangerous	14	7
33 Salt-N-Pepa, R U Ready	13	13
34 Wyclef Jean, Gone Till November	13	10
35 Nu Flavor, Heaven	13	13
36 K.P. & Envy, Swing My Way	13	2
37 Next, Too Close	12	0
38 Mary J. Blige, Everything	12	14
39 Allure, All Cried Out	12	14
40 Missy "Misdemeanor" Elliott, The Rain	12	11

KIX 106

WWXK
Providence

MD: Sandy B.

	TW	LW
1 Usher, Nice & Slow	91	92
2 K-Ci & Jojo, All My Love	90	90
3 Janet, Together Again	84	96
4 Puff Daddy, Been Around The World	84	96
5 Dru Hill, We're Not Making Love No More	82	84
6 Erick Sermon, Keith Murray & Redman, Rapper's	42	48
7 Queen P, All My Love	41	39
8 Will Smith, Gettin' Jiggy Wit It	41	45
9 Jagged Edge, Gotta Be	40	22
10 Boyz II Men, A Song For Mama	39	19
11 Erykah Badu, Tyrone	38	36
12 Rakim, Guess Who's Back	38	45
13 Jay-Z, (Always Be My) Sunshine Sunshine	35	36
14 Backstreet Boys, As Long As You Love Me	32	32
15 Kai, Say You'll Stay	31	36
16 K.P. & Envy, Swing My Way	30	38
17 Mase, What You Want	29	13
18 LSG, My Body	27	62
19 Puff Daddy, It's All About The Benjamins	27	29
20 Next, Too Close	26	17
21 Mase, Feel So Good	25	31
22 Busta Rhymes, Put Your Hands Where My Eye	24	28
23 Allure, All Cried Out	24	21
24 Next, Butta Love	23	26
25 Missy "Misdemeanor" Elliott, Sock It 2 M	22	28
26 Mary J. Blige, A Dream	22	22
27 Uncle Sam, I Don't Ever Want To See You	21	64
28 Wyclef Jean, Gone Till November	21	21
29 Latasha, Freak It	21	26
30 Busta Rhymes, Dangerous	20	24
31 Changing Faces feat. Jay-Z, All Of My Da	20	6
32 Aaliyah, The One I Gave My Heart To	19	23
33 Total, What About Us	17	19
34 LL Cool J, Father	16	23
35 Debra Michaels, How Do I Live	16	14
36 Lutricia McNeal, Ain't That Just The Way	16	15
37 Lil' Suzy, Memories	15	17
38 Glenivina, Only When Ur Lonely	14	15
39 SWV, Lose My Cool	13	5
40 Destiny's Child, No, No, No	13	10

KQMQ

KQMQ
Honolulu

PD: Kimo Akane
MD: Kathy Nakagawa
MC: Eric "Kool E." Bunda

	TW	LW
1 K-Ci & Jojo, All My Love	62	63
2 Celine Dion, My Heart Will Go On	59	51
3 Will Smith, Gettin' Jiggy Wit It	53	50
4 Boyz II Men, A Song For Mama	50	53
5 Uncle Sam, I Don't Ever Want To See You	50	52
6 Kai, Say You'll Stay	49	49
7 Hanson, I Will Come To You	48	48
8 Janet, Together Again	47	40
9 Diana King, L-L-Lies	40	43
10 Rome, Crazy Love	39	30
11 Mase, Feel So Good	38	33
12 LSG, My Body	37	31
13 Usher, Nice & Slow	37	38
14 Missy "Misdemeanor" Elliott, Sock It 2 M	36	31
15 Mariah Carey, Breakdown	36	4
16 Na Leo Piliwhana, The Rest Of Your Life	32	20
17 Total, What About Us	32	35
18 Somethin' For The People, My Love Is The	28	50
19 Aqua, Lollipop	27	26
20 Puff Daddy, Been Around The World	24	11
21 Destiny's Child, No, No, No	21	28
22 N-Town, They Like It Slow	20	28
23 Spice Girls, Too Much	20	20
24 Puff Daddy, It's All About The Benjamins	20	18
25 Queen P, All My Love	20	16
26 Los Umbrellos, No Tongo Dnoro	18	17
27 Spice Girls, Say You'll Be There	17	28
28 Nastyboy Kick, Down For Yours	16	12
29 Robyn, Show Me Love	16	28
30 LaAnn Rimes, How Do I Live	16	7
31 Usher, You Make Me Wanna	16	18
32 Backstreet Boys, As Long As You Love Me	16	28
33 Inej, Love You Down	16	16
34 The Notorious B.I.G., Mo Money Mo Problems	16	16
35 Born Jamaicans, Send My Love/Send One Y	16	15
36 Tony Toni Tone, Let's Get Down	14	16
37 Babyface, This Is For The Lover In You	14	14
38 SWV, Can We	14	13
39 Bone Thugs-N-Harmony, If I Could Teach T	14	12
40 Spice Girls, Wannabe	14	12

KKSS

KKSS
Albuquerque

PD: Tony Manero
MD: Jackie James

	TW	LW
1 K-Ci & Jojo, All My Love	75	81
2 LSG, My Body	74	77
3 Usher, Nice & Slow	73	69
4 Uncle Sam, I Don't Ever Want To See You	70	77
5 Mary J. Blige, A Dream	58	14
6 K.P. & Envy, Swing My Way	58	43
7 Erick Sermon, Keith Murray & Redman, Rapper's	43	52
8 Missy "Misdemeanor" Elliott, Sock It 2 M	43	58
9 Usher, You Make Me Wanna	42	53
10 Dru Hill, 5 Steps	40	34
11 Nastyboy Kick, Lost In Love	38	35
12 Magoos And Timbaland, Luv 2 Luv U	37	31
13 Mase, Feel So Good	35	35
14 Wyclef Jean, Gone Till November	31	31
15 Jon B., Are U Still Down	31	35
16 Robyn, Show Me Love	30	19
17 Will Smith, Gettin' Jiggy Wit It	28	24
18 Destiny's Child, No, No, No	28	32
19 Mase, What You Want	27	14
20 Aaliyah, Hot Like Fire	26	12
21 Somethin' For The People, My Love Is The	25	40
22 Puff Daddy, Been Around The World	21	20
23 Puff Daddy, Can't Nobody Hold Me Down	20	21
24 Lil' Kim, Not Tonight	20	23
25 112, Only You	20	27
26 The Notorious B.I.G., Mo Money Mo Problems	20	19
27 Nastyboy Kick, Down For Yours	20	20
28 Puff Daddy & Faith Evans, I'll Be	18	23
29 Backstreet, No Diggity	18	24
30 Busta Rhymes, Dangerous	16	26
31 Next, Too Close	16	5
32 Rome, I Belong To You	15	20
33 Backstreet, Don't Leave Me	15	17
34 Inej, Love You Down	15	19
35 Busta Rhymes, Put Your Hands Where My Eye	14	13
36 The Notorious B.I.G., Going Back To Cali	14	3
37 Changing Faces, G.H.E.T.T.O.U.T.	13	17
38 The Notorious B.I.G., Hypnotize	12	12
39 Allure, All Cried Out	12	17
40 Aaliyah, If Your Girl Only Knew	11	8

KKXX

KKXX
Bakersfield

PD: Chris Squires
MD: Tony Manes

	TW	LW
1 Robyn, Show Me Love	66	62
2 Backstreet Boys, As Long As You Love Me	66	67
3 Usher, You Make Me Wanna	65	64
4 Will Smith, Gettin' Jiggy Wit It	55	46
5 Mariah Carey, Honey	48	45
6 Janet, Together Again	48	43
7 Somethin' For The People, My Love Is The	47	55
8 Inej, Love You Down	44	40
9 Allure, All Cried Out	42	52
10 Boyz II Men, A Song For Mama	41	36
11 The Notorious B.I.G., Mo Money Mo Problems	40	40
12 Nu Flavor, Heaven	40	42
13 Mary J. Blige, Everything	38	38
14 Mase, Feel So Good	36	39
15 Los Umbrellos, No Tongo Dnoro	35	38
16 Missy "Misdemeanor" Elliott, Sock It 2 M	34	39
17 Backstreet Allstars, I Like It	32	31
18 Spice Girls, Say You'll Be There	31	34
19 Backstreet Boys, Quit Playing Games	31	29
20 Will Smith, Men In Black	31	26
21 Robyn, Do You Know What It Takes	30	31
22 Mark Morrison, Return Of The Mack	29	37
23 Erick Sermon, Keith Murray & Redman, Rapper's	29	16
24 K-Ci & Jojo, All My Love	29	16
25 Nu Flavor, Sweet Sexy Thing	28	29
26 Usher, You Make Me Wanna	28	16
27 Uncle Sam, I Don't Ever Want To See You	28	16
28 Puff Daddy & Faith Evans, I'll Be	28	31
29 Backstreet, Don't Leave Me	28	27
30 Boyz II Men, 4 Seasons Of Loneliness	27	36
31 The Notorious B.I.G., Hypnotize	27	27
32 Puff Daddy, Can't Nobody Hold Me Down	26	24
33 Aaliyah, The One I Gave My Heart To	26	24
34 La Beacha, Be My Lover	19	14
35 Lutricia McNeal, Ain't That Just The Way	16	13
36 Glenivina, Pony	15	10
37 Babyface, This Is For The Lover In You	13	9
38 Quad City DJ's, C'mon N' Ride It	12	14
39 Freak Nasty, Dr. Dip	12	15
40 George Michael, Fastlove	12	14

Z95

KZFM
Corpus Christi

PD: Ed Ocanas

	TW	LW
1 Erykah Badu, Tyrone	64	50
2 Uncle Sam, I Don't Ever Want To See You	63	62
3 LSG, My Body	63	61
4 Backstreet Boys, As Long As You Love Me	61	59
5 Usher, You Make Me Wanna	59	59
6 K-Ci & Jojo, All My Love	59	51
7 Chumbawamba, Tubthumping	54	53
8 Celine Dion, My Heart Will Go On	47	22
9 Sugar Ray, Fly	45	59
10 Usher, Nice & Slow	43	25
11 Somethin' For The People, My Love Is The	38	43
12 Kai, Say You'll Stay	36	29
13 Janet, Together Again	35	32
14 Savage Garden, Truly Madly Deeply	34	27
15 Spice Girls, Spice Up Your Life	32	3
16 Fruit De La Passion, Tic Tac Tac	29	24
17 Robyn, Show Me Love	28	29
18 Lutricia McNeal, Ain't That Just The Way	28	19
19 Boyz II Men, A Song For Mama	26	28
20 All Saints, I Know Where It's At	25	1
21 Hanson, I Will Come To You	25	30
22 Brian McKnight, Anytime	24	26
23 Destiny's Child, No, No, No	22	17
24 Diana King, L-L-Lies	20	18
25 Rome, Crazy Love	20	16
26 Master P, I Miss My Homies	19	17
27 Will Smith, Gettin' Jiggy Wit It	19	21
28 Gina G, Ooh Aah... Just A Little Bit	17	17
29 OMC, How Bizarre	17	15
30 The Notorious B.I.G., Mo Money Mo Problems	16	28
31 Inej, Love You Down	16	19
32 Meredith Brooks, Blotch	16	17
33 Erick Sermon, Keith Murray & Redman, Rapper's	16	21
34 Robyn, Do You Know What It Takes	15	14
35 Will Smith, Men In Black	15	14



AIRPOWER
(Minimum 500 detections for the first time)

<p>CELINE DION 638/308 <i>My Heart Will Go On (550 Music)</i> Total Stations: 18/Chart Move: 31-16 Heavy (40+ plays): 9 KIKI, KLUC, KPRR, KQMQ, KSFM, KTFM, KZFM, WBBM, WKTU Medium (20-39): 4 WDRQ, WFHN, WIOQ, WNVZ Light (Under 20): 5 New Airplay This Week: 4 KGGI, WDRQ, WIOQ, WPOW</p>	<p>PUFF DADDY & THE FAMILY 567/106 <i>Been Around The World (Bad Boy/Arista)</i> Total Stations: 26/Chart Move: 22-18 Heavy (40+): 3 WJMN, WKXJ, WWKX Medium (20-39): 8 KCAQ, KDGS, KIKI, KKSS, KOKS, KQMQ, KUBE, KYLZ Light (Under 20): 15 New Airplay This Week: 1 WNVZ</p>
--	--

AIRPOWER BOUND

Total Plays/Gain

K.P. & ENVYI 472/11
Swing My Way (EastWest/EEG)
Total Stations: 18/Chart Move: 24-22
Heavy (40+ plays): 4 KKSS, KYLZ, WHHH, WKXJ
Medium (20-39): 7 KDGS, KOHT, KQKS, KSFM, KYLD, WBBM, WWKX
Light (Under 20): 7
New Airplay This Week: 1 WJJS

MARIAH CAREY 471/188
Breakdown (Columbia)
Total Stations: 20/Chart Move: 39-23
Heavy (40+): 2 KIKI, KLUC
Medium (20-39): 10 KBOS, KQMQ, KUBE, WBBM, WFHN, WHHH, WJJS, WJMN, WNVZ, XHTZ
Light (Under 20): 8
New Airplay This Week: 4 KKSS, KQMQ, KZFM, WWKX

QUEEN PEN 462/51
All My Love (Lil' Man/Interscope)
Total Stations: 24/Chart Move: 27-24
Heavy (40+): 2 KQKS, WWKX
Medium (20-39): 9 KCAQ, KDON, KGGI, KKFR, KOHT, KQMQ, WHHH, WPOW, XHTZ
Light (Under 20): 13
New Airplay This Week: 1 KBOS

LEANN RIMES 375/-5
How Do I Live (Curb)
Total Stations: 18/Chart Move: 29-29
Heavy (40+): 3 KIKI, KLUC, WBBM
Medium (20-39): 5 KPRR, KSFM, KTFM, WKTU, WPOW
Light (Under 20): 10

WYCLEF JEAN 333/39
Gone Till November (Ruffhouse/Columbia)
Total Stations: 20/Chart Move: 36-30
Heavy (40+): 2 KQKS, XHTZ
Medium (20-39): 5 KIKI, KKSS, KOHT, WJJS, WWKX
Light (Under 20): 13

LUTRICIA MCNEAL 329/42
Ain't That Just The Way (Crave)
Total Stations: 17/Chart Move: 38-31
Heavy (40+): 0
Medium (20-39): 8 KDGS, KGGI, KIKI, KZFM, WDRQ, WFHN, WIOQ, WKTU
Light (Under 20): 9

MASE (FEAT. TOTAL) 321/58
What You Want (Bad Boy/Arista)
Total Stations: 20/Chart Move: Debut 33
Heavy (40+): 1 KYLZ
Medium (20-39): 7 KDGS, KKFR, KKSS, KYLD, WJMN, WWKX, XHTZ
Light (Under 20): 12
New Airplay This Week: 1 KLUC

ALL SAINTS 309/128
I Know Where It's At (London/Island)
Total Stations: 17/Chart Move: Debut 35
Heavy (40+): 1 KUBE

Total Plays/Gain

DRU HILL 298/34
We're Not Making Love No More (LaFace/Arista)
Total Stations: 10/Chart Move: Debut 37
Heavy (40+): 4 KSFM, KUBE, WKXJ, WWKX
Medium (20-39): 1 WJJS
Light (Under 20): 5

LOS UMBRELLOS 294/21
No Tengo Dinero (Flex/EMI/Virgin)
Total Stations: 15/Chart Move: 40-39
Heavy (40+): 0
Medium (20-39): 5 KQXK, KLUC, KPRR, KSFM, WFHN
Light (Under 20): 10
New Airplay This Week: 3 KLUC, WDRQ, WNVZ

BUSTA RHYMES 293/-6
Dangerous (Elektra/EEG)
Total Stations: 25/Chart Move: 34-40
Heavy (40+): 1 KDGS
Medium (20-39): 5 KKFR, KYLZ, WKXJ, WWKX, XHTZ
Light (Under 20): 19
New Airplay This Week: 2 WJJS, WNVZ

CHART BOUND

Total Plays/Gain

SPICE GIRLS 292/40
Too Much (Virgin)
Total Stations: 14
Heavy (40+): 0
Medium (20-39): 7 KLUC, KQMQ, KSFM, KTFM, KZFM, WFHN, WNVZ
Light (Under 20): 7
New Airplay This Week: 4 KIKI, KZFM, WBBM, WHHH

SMASH MOUTH 272/36
Walkin' On The Sun (Interscope)
Total Stations: 12
Heavy (40+): 2 WFHN, WKXJ
Medium (20-39): 3 KDON, KTFM, WDRQ
Light (Under 20): 7

SAVAGE GARDEN 270/86
Truly Madly Deeply (Columbia)
Total Stations: 11
Heavy (40+): 3 KDON, WFHN, WKXJ
Medium (20-39): 3 KZFM, WDRQ, WIOQ
Light (Under 20): 5
New Airplay This Week: 2 KPRR, WKXJ

DRU HILL 264/9
5 Steps (Island)
Total Stations: 13
Heavy (40+): 2 KDGS, KKSS
Medium (20-39): 5 KIKI, KOHT, KTFM, WHHH, XHTZ
Light (Under 20): 6
New Airplay This Week: 1 KYLD

MOST NEW STATIONS

	No. Of Stations
NEXT <i>Too Close (Arista)</i>	8
ALL SAINTS <i>I Know Where It's At (London/Island)</i>	7
BRIAN MCKNIGHT <i>Anytime (Mercury)</i>	5
'N SYNC <i>I Want You Back (RCA)</i>	5
SWV <i>Rain (RCA)</i>	5

BORN JAMERICANS 247/20
Send My Love/Send One Your Love (Delicious Vinyl)
Total Stations: 11
Heavy (40+): 4 KIKI, KYLD, KYLZ, XHTZ
Medium (20-39): 0
Light (Under 20): 7
New Airplay This Week: 1 KDGS

BRIAN MCKNIGHT 245/121
Anytime (Mercury)
Total Stations: 18
Heavy (40+): 0
Medium (20-39): 6 KCAQ, KDGS, KSFM, KTFM, KZFM, WHHH
Light (Under 20): 12
New Airplay This Week: 5 KOHT, KSFM, WJJS, WJMN, WPOW

ROME 232/-6
Crazy Love (Grand Jury/RCA)
Total Stations: 12
Heavy (40+): 0
Medium (20-39): 6 KIKI, KOHT, KQMQ, KZFM, WJJS, XHTZ
Light (Under 20): 6

MARY J. BLIGE 230/16
A Dream (Arista)
Total Stations: 8
Heavy (40+): 2 KKSS, KYLZ
Medium (20-39): 3 KKFR, WHHH, WWKX
Light (Under 20): 3

WC FROM WESTSIDE CONNECTION 215/39
Just Clownin' (Payday/FFRR/Island)
Total Stations: 16
Heavy (40+): 0
Medium (20-39): 4 KCAQ, KDON, KKFR, XHTZ
Light (Under 20): 12
New Airplay This Week: 1 WHHH

NEXT 210/118
Too Close (Arista)
Total Stations: 13
Heavy (40+): 0
Medium (20-39): 4 KBOS, WJMN, WWKX, XHTZ
Light (Under 20): 9
New Airplay This Week: 8 KBOS, KCAQ, KKSS, KQKS, KYLZ, WHHH, WJJS, WJMN

MILITIA 169/11
Burn (Red Ant)
Total Stations: 11
Heavy (40+): 2 KYLD, WKXJ
Medium (20-39): 1 XHTZ
Light (Under 20): 8

★ SWV 148/108
Rain (RCA)
Total Stations: 12
Heavy (40+): 1 KQKS
Medium (20-39): 2 KYLZ, WHHH
Light (Under 20): 9
New Airplay This Week: 5 KCAQ, KGGI, KOHT, KYLZ, WKXJ

SNOOP DOGGY DOGG FEAT. JD 144/-6
We Just Wanna Party With You (Columbia)
Total Stations: 8
Heavy (40+): 1 KKFR
Medium (20-39): 2 KYLD, KYLZ
Light (Under 20): 5

RAKIM 139/-4
Guess Who's Back (Universal)
Total Stations: 12
Heavy (40+): 0
Medium (20-39): 3 KKFR, WWKX, XHTZ
Light (Under 20): 9
New Airplay This Week: 1 KOHT

FRUIT DE LA PASSION 119/18
Tic Tac Tac (Warlock)
Total Stations: 6
Heavy (40+): 0
Medium (20-39): 2 KTFM, KZFM
Light (Under 20): 4
New Airplay This Week: 1 WKTU

KIM SANDERS 114/-5
Jealousy (Dancin' Music/Island)
Total Stations: 8
Heavy (40+): 0
Medium (20-39): 2 WFHN, WJJS
Light (Under 20): 6

AALIYAH 110/23
Hot Like Fire (Blackground/Atlantic)
Total Stations: 4
Heavy (40+): 1 KYLZ
Medium (20-39): 2 KKSS, KYLD
Light (Under 20): 1

THE NOTORIOUS B.I.G. 96/1
Going Back To Call (Bad Boy/Arista)
Total Stations: 13
Heavy (40+): 0
Medium (20-39): 2 KKFR, KOHT
Light (Under 20): 11
New Airplay This Week: 1 KKSS

AMBER 95/-5
One More Night (Tommy Boy)
Total Stations: 6
Heavy (40+): 0
Medium (20-39): 3 WDRQ, WIOQ, WKTU
Light (Under 20): 3

★ SOMETHIN' FOR THE PEOPLE 94/59
All I Do (Warner Bros.)
Total Stations: 4
Heavy (40+): 1 KUBE
Medium (20-39): 1 KDGS
Light (Under 20): 2
New Airplay This Week: 3 KCAQ, KIKI, KUBE

TOO SHORT 86/17
I Need A Freak (Priority)
Total Stations: 4
Heavy (40+): 1 KKFR
Medium (20-39): 1 KYLZ
Light (Under 20): 2

ALLURE 85/19
Last Chance (Track Masters/Crave)
Total Stations: 7
Heavy (40+): 1 KIKI
Medium (20-39): 1 KLUC
Light (Under 20): 5
New Airplay This Week: 2 KLUC, KPRR

★ MACK 10 FEAT. ICE CUBE & SNOOP DOGGY DOG 84/50
Only In California (Priority)
Total Stations: 14
Heavy (40+): 0
Medium (20-39): 0
Light (Under 20): 14
New Airplay This Week: 1 KYLZ

SNEAKER PIMPS 84/4
Spin Spin Sugar (Clean Up/Virgin)
Total Stations: 6
Heavy (40+): 1 WPOW
Medium (20-39): 1 KTFM
Light (Under 20): 4

★ 'N SYNC 81/75
I Want You Back (RCA)
Total Stations: 6
Heavy (40+): 0
Medium (20-39): 1 KDON
Light (Under 20): 5
New Airplay This Week: 5 KDGS, KDON, KPRR, WFHN, WNVZ

★ PRINCE BE, KY-MANI & JOHN F 75/25
Movin' On Up (Gee Street/V2)
Total Stations: 5
Heavy (40+): 0
Medium (20-39): 2 KQKS, XHTZ
Light (Under 20): 3
New Airplay This Week: 1 KUBE

SHAGGY 71/4
Sexy Body Girls (Virgin)
Total Stations: 10
Heavy (40+): 1 KIKI
Medium (20-39): 0
Light (Under 20): 9
New Airplay This Week: 2 KCAQ, WWKX

★ MASTER P 57/18
Make 'Em Say Uhh! (No Limit/Priority)
Total Stations: 10
Heavy (40+): 0
Medium (20-39): 0
Light (Under 20): 10
New Airplay This Week: 2 KCAQ, WPOW

★ JAY-Z FEATURING BLACKSTREET 56/25
The City Is Mine (Roc-A-Fella/Daf Jam/Mercury)
Total Stations: 8
Heavy (40+): 0
Medium (20-39): 1 XHTZ
Light (Under 20): 7
New Airplay This Week: 1 KDGS

★ LSG 53/18
Curious (EastWest/EEG)
Total Stations: 7
Heavy (40+): 0
Medium (20-39): 1 KSFM
Light (Under 20): 6
New Airplay This Week: 1 WWKX

★ BACKSTREET BOYS 53/17
Everybody (Backstreet's Back) (Jive)
Total Stations: 3
Heavy (40+): 0
Medium (20-39): 1 WDRQ
Light (Under 20): 2

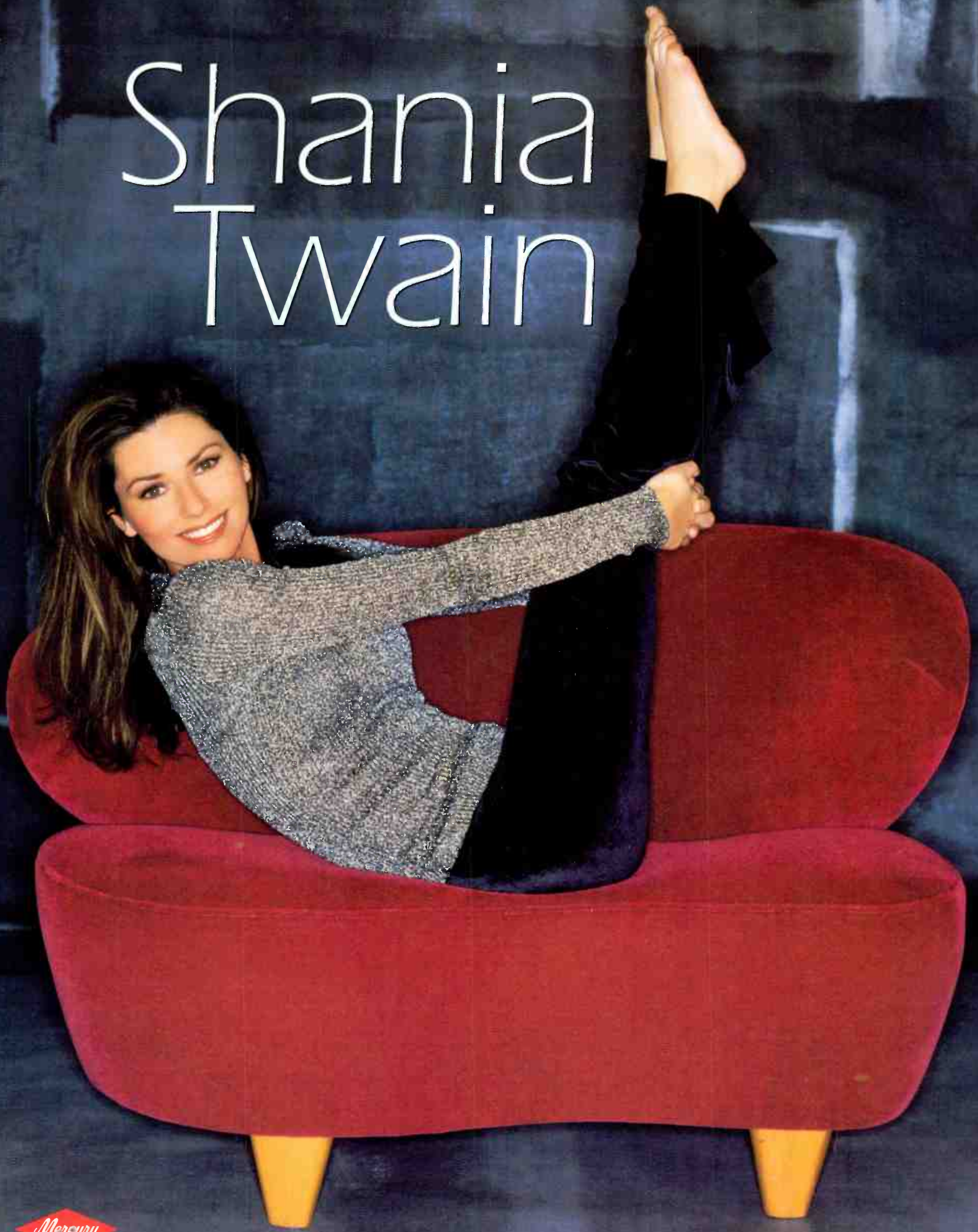
★ SYLK-E. FYNE FEATURING CHILL 52/50
Romeo And Juliet (RCA)
Total Stations: 2
Heavy (40+): 1 KYLZ
Medium (20-39): 0
Light (Under 20): 1
New Airplay This Week: 1 KYLZ

★ WILL SMITH 51/5
Just The Two Of Us (Columbia)
Total Stations: 1
Heavy (40+): 1 KUBE
Medium (20-39): 0
Light (Under 20): 0

★ BIG PUNISHER 50/4
I'm Not A Player (Loud/RCA)
Total Stations: 5
Heavy (40+): 0
Medium (20-39): 1 XHTZ
Light (Under 20): 4

Airpower awarded to those records which attain 500 detections for the first time. New airplay lists those stations registering six or more detections per week on a record for the first time. ★ Initial impact: records appearing on this page for the first time.

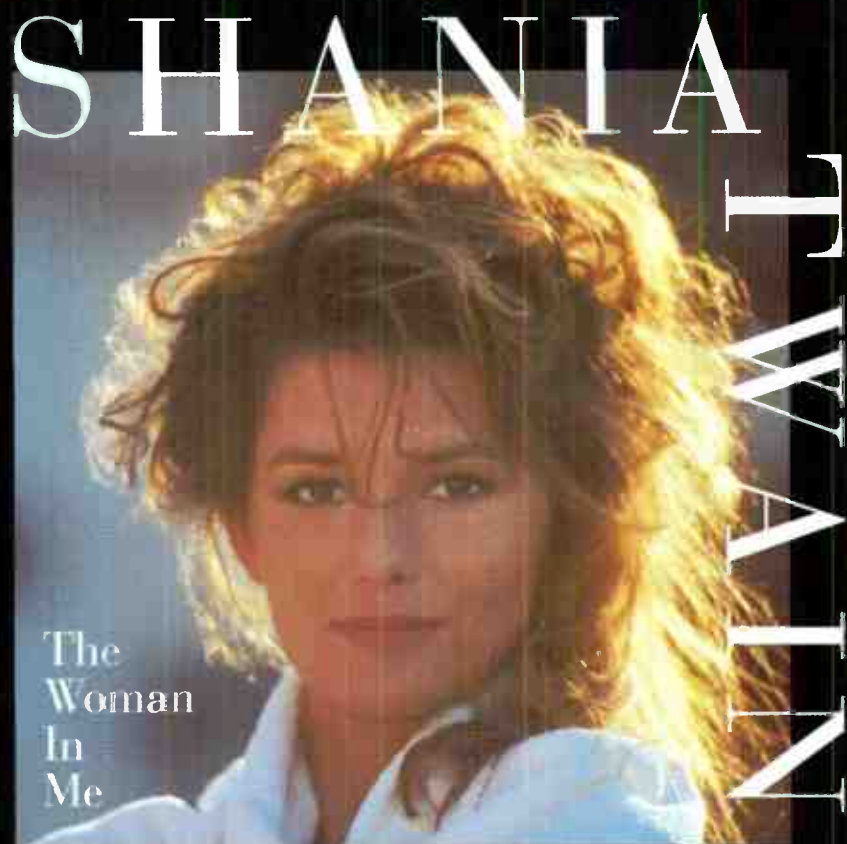
Shania Twain



a PolyGram company Jon Landau Management • Produced by Robert John "Mutt" Lange

World Radio History

RIAA Certified



Diamond status
Over 10 million
units in 3 years

3.5 million in
2 months



SONG ACTIVITY REPORTS



Detailed song tracking information for the last 3 weeks for all songs showing increased play this week. Total plays and gain do not include video play. Markets listed in order of population.



For Week Ending January 18, 1998

Table for ALL SAINTS: 309/128. Includes station data for BET, MTV, WKTU, etc.

Table for MARY J. BLIGE: 230/16. Includes station data for BET, MTV, WKTU, etc.

Table for BORN JAMERICANS: 247/20. Includes station data for BET, MTV, WKTU, etc.

Table for BOYZ II MEN: 942/67. Includes station data for BET, MTV, WKTU, etc.

Table for MARIAH CAREY (FEAT. BONE THUGS-N-HARMONY): 471/188. Includes station data for BET, MTV, WKTU, etc.

Table for DESTINY'S CHILD: 657/91. Includes station data for BET, MTV, WKTU, etc.

Table for CELINE DION: 638/308. Includes station data for BET, MTV, WKTU, etc.

Table for DRU HILL: 264/9. Includes station data for BET, MTV, WKTU, etc.

Table for DRU HILL: 298/34. Includes station data for BET, MTV, WKTU, etc.

Table for JANET: 947/61. Includes station data for BET, MTV, WKTU, etc.

Table for WYCLEF JEAN: 333/39. Includes station data for BET, MTV, WKTU, etc.

Table for K-CI & JOJO: 1576/83. Includes station data for BET, MTV, WKTU, etc.

Table for K.P. & ENVYI: 472/11. Includes station data for BET, MTV, WKTU, etc.

Table for LOS UMBRELLOS: 294/21. Includes station data for BET, MTV, WKTU, etc.

Table for MASE (FEAT. TOTAL): 321/58. Includes station data for BET, MTV, WKTU, etc.

Table for BRIAN MCKNIGHT: 245/121. Includes station data for BET, MTV, WKTU, etc.

Table for LUTRICIA MCNEAL: 329/42. Includes station data for BET, MTV, WKTU, etc.

Table for MILITIA: 169/11. Includes station data for BET, MTV, WKTU, etc.

Table for NEXT: 210/18. Includes station data for BET, MTV, WKTU, etc.

Table for PUFF DADDY & THE FAMILY: 567/106. Includes station data for BET, MTV, WKTU, etc.

Table for QUEEN PEN: 462/51. Includes station data for BET, MTV, WKTU, etc.

Table for SAVAGE GARDEN: 270/86. Includes station data for BET, MTV, WKTU, etc.

Table for ERICK SERMON, KEITH MURRAY & REDMAN: 693/59. Includes station data for BET, MTV, WKTU, etc.

Table for SMASH MOUTH: 272/36. Includes station data for BET, MTV, WKTU, etc.

Table for WILL SMITH: 1063/8. Includes station data for BET, MTV, WKTU, etc.

Table for SPICE GIRLS: 292/40. Includes station data for BET, MTV, WKTU, etc.

Table for SWV: 148/108. Includes station data for BET, MTV, WKTU, etc.

Table for UNCLE SAM: 1259/11. Includes station data for BET, MTV, WKTU, etc.

Table for USHER: 1221/168. Includes station data for BET, MTV, WKTU, etc.

Table for WC FROM WESTSIDE CONNECTION: 215/39. Includes station data for BET, MTV, WKTU, etc.

CROSSOVER

POWER PLAYLISTS

For Week Ending January 18, 1998



Playlists supplied by Broadcast Data Systems' Radio Track service. Songs ranked by number of plays in monitored week. Playlists are listed in order of TSA weekly cum, beginning with the highest-cumming station. Cues are updated twice weekly following the release of the Spring and Fall Arbitron surveys. The number of stations shown each week varies depending upon space.

HOT 97		POWER 106		THE BEAT		WGCI		POWER 99		WPGC	
WQHT	PD: Steve Smith	KPWR	PD: Michelle Mercer	KKBT	PD: Michelle Santosuosso	WGCI	PD: Elroy R.C. Smith	WUSL	OM: Helen Little	WPGC	PD: Jay Stevens
New York	APD/MD: Tracy Cloherty	Los Angeles	MD: Damian Young	Los Angeles	APD: Mariama Snider	Chicago	APD/MD: Jay Allen	Philadelphia	MD: Glenn Cooper	Washington, DC	APD: Bob Holmcrans
MC: Deenen Womack										MD: Maurice De Voe	
TW	LW	TW	LW	TW	LW	TW	LW	TW	LW	TW	LW
1	Lord Tariq & Peter Gunz, Deja Vu	1	2Pac, I Wonder If Heaven Got A Ghetto	1	W.C., Just Clownin'	1	LSG, My Body	1	Brian McKnight, Anytime	1	Brian McKnight, Anytime
2	Busta Rhymes, Dangerous	2	Somethin' For The People, My Love Is The	2	Erykah Badu, Tyrone	2	Ol' School, Am I Dreaming	2	Mary J. Blige, Seven Days	2	SWF, Rain
3	Mary J. Blige, Seven Days	3	Erick Sermon, Keith Murray & Redman, Rapper's	3	LSG, My Body	3	2Pac, I Wonder If Heaven Got A Ghetto	3	Busta Rhymes, Dangerous	3	LSG, My Body
4	The Notorious B.I.G., Nasty Boy	4	Puff Daddy, Sonoma	4	Total, What About Us	4	Janet, Get Lonely	4	Dru Hill, 5 Steps	4	Usher, Nice & Slow
5	Total, What About Us	5	Snoop Doggy Dogg Feat. J. Lo, We Just Wanna	5	Jon B., Are U Still Down	5	Erykah Badu, Tyrone	5	Usher, Nice & Slow	5	Usher, Nice & Slow
6	Boyz II Men, A Song For Mama	6	Mac 10, Only In California	6	Usher, You Make Me Wanna	6	Usher, Nice & Slow	6	Usher, Nice & Slow	6	Usher, Nice & Slow
7	SWF, Rain	7	W.C., Just Clownin'	7	W.C., Just Clownin'	7	Mariah Carey, Breakdown	7	LL Cool J, 4,3,2,1	7	LL Cool J, 4,3,2,1
8	Mary J. Blige, A Dream	8	Az, Has Nature And Dr. Dre, Phori: Tap	8	Queen Pen, All My Love	8	Brian McKnight, Anytime	8	Next, Butta Love	8	Next, Butta Love
9	Dru Hill, 5 Steps	9	Queen Pen, All My Love	9	Busta Rhymes, Put Your Hands Where My	9	Usher, You Make Me Wanna	9	Usher, You Make Me Wanna	9	Usher, You Make Me Wanna
10	LL Cool J, 4,3,2,1	10	Total, What About Us	10	Mary J. Blige, Seven Days	10	Mary J. Blige, Seven Days	10	Usher, You Make Me Wanna	10	Usher, You Make Me Wanna
11	Dru Hill, We're Not Making Love No More	11	LSG, My Body	11	Janet, Get Lonely	11	Janet, Get Lonely	11	LSG, My Body	11	LSG, My Body
12	Destiny's Child, No, No, No	12	Ice Cube, We Be Cubbin'	12	Erykah Badu, Tyrone	12	Usher, You Make Me Wanna	12	Usher, You Make Me Wanna	12	Usher, You Make Me Wanna
13	Mic Geronimo, Nothin' Move But The Money	13	Snoop & Kurupt, Ride On	13	Somethin' For The People, My Love Is The	13	Uncle Sam, I Don't Ever Want To See You	13	Uncle Sam, I Don't Ever Want To See You	13	Uncle Sam, I Don't Ever Want To See You
14	Usher, Nice & Slow	14	Mac 10 And Timbaland, Luv 2 Luv U	14	Erick Sermon, Keith Murray & Redman, Rapper's	14	Busta Rhymes, Put Your Hands Where My	14	Busta Rhymes, Put Your Hands Where My	14	Busta Rhymes, Put Your Hands Where My
15	Rakim, Guess Who's Back	15	Brian McKnight, Anytime	15	Brian McKnight, Anytime	15	Destiny's Child, No, No, No	15	Destiny's Child, No, No, No	15	Destiny's Child, No, No, No
16	Davina, So Good	16	Next, Butta Love	16	Outkast, In Due Time	16	Mary J. Blige, I Can Love You	16	Mary J. Blige, I Can Love You	16	Mary J. Blige, I Can Love You
17	Mase, What You Want	17	Mase, What You Want	17	Total, What About Us	17	Mary J. Blige, I Can Love You	17	Mary J. Blige, I Can Love You	17	Mary J. Blige, I Can Love You
18	Erykah Badu, Tyrone	18	Ice Cube, We Be Cubbin'	18	Janet, Get Lonely	18	Janet, Get Lonely	18	Janet, Get Lonely	18	Janet, Get Lonely
19	Missy "Missdeamona" Elliott, Beep Me 911	19	Jay-Z, The City Is Mine	19	Janet, Get Lonely	19	Janet, Get Lonely	19	Janet, Get Lonely	19	Janet, Get Lonely
20	Erick Sermon, Keith Murray & Redman, Rapper's	20	Queen Pen, All My Love	20	Queen Pen, All My Love	20	Queen Pen, All My Love	20	Queen Pen, All My Love	20	Queen Pen, All My Love
21	Mac 10 And Timbaland, Luv 2 Luv U	21	Mac 10 And Timbaland, Luv 2 Luv U	21	Mac 10 And Timbaland, Luv 2 Luv U	21	Mac 10 And Timbaland, Luv 2 Luv U	21	Mac 10 And Timbaland, Luv 2 Luv U	21	Mac 10 And Timbaland, Luv 2 Luv U
22	Mase, Feel So Good	22	Mac 10, Backyard Boogie	22	Mac 10, Backyard Boogie	22	Mac 10, Backyard Boogie	22	Mac 10, Backyard Boogie	22	Mac 10, Backyard Boogie
23	Wyclef Jean, Gone Till November	23	Mac 10, Backyard Boogie	23	Mac 10, Backyard Boogie	23	Mac 10, Backyard Boogie	23	Mac 10, Backyard Boogie	23	Mac 10, Backyard Boogie
24	Queen Pen, All My Love	24	Mac 10, Backyard Boogie	24	Mac 10, Backyard Boogie	24	Mac 10, Backyard Boogie	24	Mac 10, Backyard Boogie	24	Mac 10, Backyard Boogie
25	LSG, My Body	25	Mac 10, Backyard Boogie	25	Mac 10, Backyard Boogie	25	Mac 10, Backyard Boogie	25	Mac 10, Backyard Boogie	25	Mac 10, Backyard Boogie
26	Uncle Sam, I Don't Ever Want To See You	26	Mac 10, Backyard Boogie	26	Mac 10, Backyard Boogie	26	Mac 10, Backyard Boogie	26	Mac 10, Backyard Boogie	26	Mac 10, Backyard Boogie
27	Lox, If You Think I'm Jiggy	27	Mac 10, Backyard Boogie	27	Mac 10, Backyard Boogie	27	Mac 10, Backyard Boogie	27	Mac 10, Backyard Boogie	27	Mac 10, Backyard Boogie
28	SWF, Can We	28	Mac 10, Backyard Boogie	28	Mac 10, Backyard Boogie	28	Mac 10, Backyard Boogie	28	Mac 10, Backyard Boogie	28	Mac 10, Backyard Boogie
29	Dru Hill, We're Not Making Love No More	29	Mac 10, Backyard Boogie	29	Mac 10, Backyard Boogie	29	Mac 10, Backyard Boogie	29	Mac 10, Backyard Boogie	29	Mac 10, Backyard Boogie
30	Puff Daddy & Faith Evans, I'll Be	30	Mac 10, Backyard Boogie	30	Mac 10, Backyard Boogie	30	Mac 10, Backyard Boogie	30	Mac 10, Backyard Boogie	30	Mac 10, Backyard Boogie



BDS IMPACT

AIRPOWER

(Minimum 700 detections for the first time)

SWV 879/325, MARY J. BLIGE 809/273, MARIAH CAREY 771/260. Includes station counts and airplay details for each act.

AIRPOWER BOUND

Total Plays/Gain

PUFF DADDY & THE FAMILY 684/78, MISSY ELLIOTT 490/265, WYCLEF JEAN 474/7. Includes station counts and airplay details.

MARY J. BLIGE 809/273, MARY J. BLIGE 809/273, MARY J. BLIGE 809/273. Includes station counts and airplay details.

WYCLEF JEAN 474/7, WYCLEF JEAN 474/7, WYCLEF JEAN 474/7. Includes station counts and airplay details.

WYCLEF JEAN 474/7, WYCLEF JEAN 474/7, WYCLEF JEAN 474/7. Includes station counts and airplay details.

MASTER P 455/6, MASTER P 455/6, MASTER P 455/6. Includes station counts and airplay details.

SOMETHIN' FOR THE PEOPLE 430/81, SOMETHIN' FOR THE PEOPLE 430/81, SOMETHIN' FOR THE PEOPLE 430/81. Includes station counts and airplay details.

LL COOL J 408/34, LL COOL J 408/34, LL COOL J 408/34. Includes station counts and airplay details.

CHART BOUND

Total Plays/Gain

OL' SKOOL 391/140, OL' SKOOL 391/140, OL' SKOOL 391/140. Includes station counts and airplay details.

2PAC FEAT. ERIC WILLIAMS 387/46, 2PAC FEAT. ERIC WILLIAMS 387/46, 2PAC FEAT. ERIC WILLIAMS 387/46. Includes station counts and airplay details.

MILITIA 342/6, MILITIA 342/6, MILITIA 342/6. Includes station counts and airplay details.

WC FROM WESTSIDE CONNECTION 341/58, WC FROM WESTSIDE CONNECTION 341/58, WC FROM WESTSIDE CONNECTION 341/58. Includes station counts and airplay details.

THE NOTORIOUS B.I.G. 292/94, THE NOTORIOUS B.I.G. 292/94, THE NOTORIOUS B.I.G. 292/94. Includes station counts and airplay details.

JAY-Z FEAT. BLACKSTREET 256/160, JAY-Z FEAT. BLACKSTREET 256/160, JAY-Z FEAT. BLACKSTREET 256/160. Includes station counts and airplay details.

SOMETHIN' FOR THE PEOPLE 430/81, SOMETHIN' FOR THE PEOPLE 430/81, SOMETHIN' FOR THE PEOPLE 430/81. Includes station counts and airplay details.

THE LOX 256/4, THE LOX 256/4, THE LOX 256/4. Includes station counts and airplay details.

LORD TARIQ & PETER GUNZ 254/65, LORD TARIQ & PETER GUNZ 254/65, LORD TARIQ & PETER GUNZ 254/65. Includes station counts and airplay details.

Table with 2 columns: Station Name, No. Of Stations. Includes entries like NEXT, JODY WATLEY, JAY-Z FEAT. BLACKSTREET, LORD TARIQ & PETER GUNZ, SWV.

LSG 247/131, LSG 247/131, LSG 247/131. Includes station counts and airplay details.

SNOOP DOGGY DOGG FEAT. JD 241/8, SNOOP DOGGY DOGG FEAT. JD 241/8, SNOOP DOGGY DOGG FEAT. JD 241/8. Includes station counts and airplay details.

ICE CUBE 221/155, ICE CUBE 221/155, ICE CUBE 221/155. Includes station counts and airplay details.

MYSTIKAL 194/73, MYSTIKAL 194/73, MYSTIKAL 194/73. Includes station counts and airplay details.

QUEEN PEN 189/6, QUEEN PEN 189/6, QUEEN PEN 189/6. Includes station counts and airplay details.

CELINE DION 186/73, CELINE DION 186/73, CELINE DION 186/73. Includes station counts and airplay details.

MCX 160/69, MCX 160/69, MCX 160/69. Includes station counts and airplay details.

Main table with 12 columns: Rank, This Week, Last Week, Weeks On, Title/Imprint/Promotion Label, Artist, TW, LW. Contains top 40 records.

Records showing an increase in detections over the previous week, regardless of chart movement. A record which has been on the chart for more than 20 weeks will not receive a bullet, even if it registers an increase in detections.

SMASH MOUTH 148/12, JODY WATLEY 132/108, LEANN RIMES 146/19, SPICE GIRLS 128/26, SYLK-E. FYNE FEAT. CHILL 142/67. Includes station counts and airplay details.



SONG ACTIVITY REPORTS



For Week Ending January 18, 1998

Detailed song tracking information for the last 3 weeks for all songs showing increased play this week. Total plays and gain do not include video play. Markets listed in order of population.

Table with 12 columns: Artist, Title, Total Stations, Chart Move, and a grid of market data (City, Station, IP, etc.) for MARY J. BLIGE, BUSTA RHYMES, MARIAH CAREY, DESTINY'S CHILD, and DRU HILL.

Table with 12 columns: Artist, Title, Total Stations, Chart Move, and a grid of market data for MISSY "MISDEMEANOR" ELLIOTT, JANET, K-CI & JOJO, K.P. & ENVYI, and MASE (FEAT. TOTAL).

Table with 12 columns: Artist, Title, Total Stations, Chart Move, and a grid of market data for MASTER P, BRIAN MCKNIGHT, NEXT, PUFF DADDY & THE FAMILY, and QUEEN PEN.

Table with 12 columns: Artist, Title, Total Stations, Chart Move, and a grid of market data for WILL SMITH, SWV, TIMBALAND AND MAGOO, UNCLE SAM, and USHER.

MONITOR ADULT PANELS

ADULT TOP 40 (66)

Akron, Ohio	WKDD	Milwaukee	WKTI
Albuquerque, N.M.	KKOB	Minneapolis	WMYX
Austin, Texas	KPEK	Montgomery, Ala.	KSTP
Baltimore	KAMX	New Orleans	WBAM
Boston	WWMX	New Orleans	WEZB
Charleston, W.Va.	WBMX	New York	WNSR
Charlotte, N.C.	WVAF	Norfolk, Va.	WPLJ
Chicago	WLNK	Omaha, Neb.	WPTE
Cincinnati	WTMX	Orlando, Fla.	WWDE
Cleveland	WVMX	Philadelphia	KTNP
Colorado Springs, Colo.	WVMX	Phoenix	WOMX
Dallas	WVAF	Pittsburgh	WSHE
Dayton, Ohio	WQAL	Portland, Ore.	WYXR
Des Moines, Iowa	KVUU	Providence, R.I.	KZZP
Detroit	KDMX	Raleigh, N.C.	WVTV
El Paso, Texas	WMMX	Richmond, Va.	KBBT
Fresno, Calif.	KSTZ	St. Louis	WSNE
Green Bay, Wis.	WKQI	Sacramento, Calif.	WRAL
Greensboro, N.C.	KSHI	Saginaw, Mich.	WMXB
Hartford, Conn.	KVSR	Salt Lake City	KYKY
Honolulu	WQLH	San Antonio, Texas	WALC
Houston	WKZL	San Diego	KZZO
Indianapolis	WTIC	San Francisco	WIOG
Kansas City	KSSK	Savannah, Ga.	KBEE
Las Vegas	KHMV	Seattle	KISN
Lexington, Ky.	KKPN	Tampa, Fla.	KSMG
Little Rock, Ark.	KOZN	Washington, D.C.	KFMB
Los Angeles	KMXB		KLLC
Memphis	WMXL		WAEV
Miami	KURB		KPLZ
	KYSR		WAKS
	WMC		WMTX
	WPLL		WRQX

ADULT CONTEMPORARY (56)

Albany, N.Y.	WYJB	Lafayette, La.	KTDY
Albuquerque, N.M.	KMGH	Las Vegas	KMZQ
Augusta, Ga.	WBBQ	Long Island, N.Y.	WALK
Baltimore	WLIF	Los Angeles	KBIG
Buffalo, N.Y.	WMJQ	Miami	KOST
Burlington, Vt.	WEZF	Minneapolis	WFLC
Chattanooga, Tenn.	WDEF	Montgomery, Ala.	WLTE
Chicago	WLIT	Nashville	WMXS
Cincinnati	WNND	New Orleans	WLAC
Cleveland	WRRM	New York	WLTS
Columbia, S.C.	WDOK	Philadelphia	WLTW
Columbus, Ga.	WTCB	Phoenix	WBEB
Dallas	WGSY	Pittsburgh	KESZ
Denver	KVIL	Portland, Ore.	WSHH
Des Moines, Iowa	KIMN	Roanoke, Va.	KKCW
Fresno, Calif.	KOSI	Sacramento, Calif.	WSLQ
Ft. Myers, Fla.	KLYF	Salt Lake City	KBGY
Grand Rapids, Mich.	KTHH	San Francisco	KSFI
Greensboro, N.C.	WINK	San Jose, Calif.	KIOI
Greenville, S.C.	WLHT	Seattle	KEZR
Harrisburg, Pa.	WMAG	Spokane, Wash.	KLSY
Hartford, Conn.	WMIY	Springfield, Mo.	KISC
Huntsville, Ala.	WARM	St. Louis	KGBX
Jackson, Miss.	WRCH	Toledo, Ohio	KEZK
Johnson City, Tenn.	WAHR	Washington, D.C.	WRVF
Kansas City	WJDX	West Palm Beach, Fla.	WASH
	WTFM	Wilkes Barre, Pa.	WRMF
	KUDL		WMGS

MODERN ADULT (40)

Albany, N.Y.	WXLE	Los Angeles	KYSR
Albuquerque, N.M.	KPEK	Miami	WPLL
Austin, Texas	KAMX	Montgomery, Ala.	WBAM
Boston	WBMX	Norfolk, Va.	WPTE
Charlotte, N.C.	WBOS	Omaha, Neb.	KTNP
Chicago	WLNK	Orlando, Fla.	WSHE
Columbus, Ohio	WTMX	Phoenix	KZON
Dallas	WWCD	Portland, Ore.	KZZP
Denver	KDMX	Raleigh, N.C.	KBBT
Detroit	KALC	Richmond, Va.	WDCG
Ft. Myers, Fla.	KXPK	Sacramento, Calif.	WMXB
Fresno, Calif.	WPLT	Salt Lake City	KZZO
Greensboro, N.C.	WJJB	San Diego	KENZ
Hartford, Conn.	KVSR	San Francisco	KFMB
Houston	WKZL	Spokane, Wash.	KLLC
Kansas City	WTIC	St. Louis	KAEP
Las Vegas	KKPN	Tampa, Fla.	WALC
Long Island, N.Y.	KOZN		WVRV
	KMXB		WHPT
	WLIR		WMTX

ADULT TOP 40

POWER PLAYLISTS

AIRPLAY
Monitor

For Week Ending
January 18, 1998

WPLJ		WNSR	
New York		New York	
VP/Pgm: Tom Cuddy PD: Scott Shannon		PD: Adam Goodman	
TW LW		TW LW	
1	Smash Mouth, Walk On The Sun	33	15
2	Chumbawamba, Tubthumping	32	18
3	Paula Cole, I Don't Want To Wait	30	14
4	Robyn, Show Me Love	24	11
5	Janet, Together Again	24	10
6	Celine Dion, My Heart Will Go On	24	15
7	Sarah McLachlan, Sweet Surrender	22	14
8	Lisa Loeb, I Do	22	13
9	Elton John, Something About The Way You	21	11
10	Savage Garden, Truly Madly Deeply	20	12
11	Matchbox 20, 3 Am	19	12
12	Sugar Ray, Fly	17	8
13	Mariah Carey, Butterfly	16	13
14	Bryan Adams, Back To You	16	9
15	Meredith Brooks, What Would Happen	15	12
16	The Wallflowers, One Headlight	12	6
17	Third Eye Blind, Semi-Charmed Life	12	4
18	Matchbox 20, Push	11	7
19	Savage Garden, I Want You	11	4
20	The Verve Pipe, The Freshmen	10	6
21	Duncan Sheik, Barely Breathing	9	7
22	Fiona Apple, Criminal	9	5
23	Sister Hazel, All For You	9	6
24	Third Eye Blind, How's It Going To Be	9	8
25	Loreena McKennitt, The Mummers' Dance	9	7
26	Alana Davis, 32 Flavors	9	7
27	John Lennon, Nobody Told Me	8	1
28	Jewel, You Were Meant For Me	8	5
29	Shawn Colvin, Sunny Came Home	8	5
30	Harry Connick, Jr., Let's Just Kiss	8	0
1	Celine Dion, My Heart Will Go On	47	32
2	Elton John, Something About The Way You	45	45
3	Paula Cole, I Don't Want To Wait	45	30
4	Smash Mouth, Walk On The Sun	43	46
5	Savage Garden, Truly Madly Deeply	43	41
6	Matchbox 20, 3 Am	41	35
7	Matchbox 20, Push	40	44
8	Sugar Ray, Fly	39	47
9	Lisa Loeb, I Do	38	36
10	Billie Myers, Kiss The Rain	36	33
11	LeAnn Rimes, How Do I Live	35	33
12	Third Eye Blind, Semi-Charmed Life	35	34
13	Sister Hazel, All For You	35	35
14	Chumbawamba, Tubthumping	35	44
15	Loreena McKennitt, The Mummers' Dance	35	33
16	Sarah McLachlan, Sweet Surrender	28	27
17	Jimmy Ray, Are You Jimmy Ray?	25	2
18	Backstreet Boys, As Long As You Love Me	25	2
19	Green Day, Time Of Your Life	25	25
20	Bryan Adams, Back To You	24	26
21	Blessid Union Of Souls, Light In Your Eye	17	24
22	Jewel, Foolish Games	16	22
23	The Wallflowers, One Headlight	13	19
24	The Cardigans, Lovelool	11	8
25	Amy Grant, Takes A Little Time	9	4
26	No Doubt, Don't Speak	9	8
27	Sarah McLachlan, Building A Mystery	9	12
28	Shawn Colvin, Sunny Came Home	9	6
29	Meredith Brooks, Bitch	9	9
30	Monroes, What Do All The People Know	8	7

STAR 104.5		Q95.5		MIX 107.3	
Philly		Detroit		Washington, DC	
PD: Kurt Johnson APD/MD: Kim Ashley		PD: Rick Gillette MD: Fred Buchalter		PD: Steve Kosbau MD: Carol Parker	
TW LW		TW LW		TW LW	
1	LeAnn Rimes, How Do I Live	26	32	1	Sugar Ray, Fly
2	Loreena McKennitt, The Mummers' Dance	24	25	2	Smash Mouth, Walk On The Sun
3	Elton John, Something About The Way You	23	30	3	LeAnn Rimes, How Do I Live
4	Jewel, Foolish Games	23	24	4	Chumbawamba, Tubthumping
5	Celine Dion, My Heart Will Go On	22	12	5	Lisa Loeb, I Do
6	Savage Garden, Truly Madly Deeply	22	29	6	Paula Cole, I Don't Want To Wait
7	Chumbawamba, Tubthumping	21	20	7	Matchbox 20, Push
8	Paula Cole, I Don't Want To Wait	21	28	8	Elton John, Something About The Way You
9	Smash Mouth, Walk On The Sun	19	19	9	Sister Hazel, All For You
10	Sugar Ray, Fly	19	20	10	Savage Garden, Truly Madly Deeply
11	Third Eye Blind, Semi-Charmed Life	19	22	11	Third Eye Blind, Semi-Charmed Life
12	Bryan Adams, Back To You	17	13	12	Matchbox 20, 3 Am
13	Matchbox 20, Push	16	19	13	Bryan Adams, Back To You
14	Matchbox 20, 3 Am	16	15	14	Sarah McLachlan, Sweet Surrender
15	Jewel, You Were Meant For Me	14	12	15	Celine Dion, My Heart Will Go On
16	Journey, When You Love A Woman	14	16	16	The Wallflowers, One Headlight
17	OMC, How Bizarre	13	11	17	Jewel, Foolish Games
18	Backstreet Boys, Quit Playing Games	11	11	18	Jewel, You Were Meant For Me
19	Lisa Loeb, I Do	11	19	19	Alanis Morissette, Ironic
20	Cheap Trick, The Flame	11	9	20	Fun Factory, I Wanna B With U
21	Peter Gabriel, In Your Eyes	10	9	21	The Cardigans, Lovelool
22	Rod Stewart, Young Turks	10	7	22	OMC, How Bizarre
23	Tracy Chapman, Fast Car	10	6	23	Shawn Colvin, Sunny Came Home
24	Bruce Springsteen, Sweet Garden	10	12	24	No Doubt, Don't Speak
25	Tracy Chapman, Give Me One Reason	9	9	25	Alanis Morissette, Head Over Feet
26	Sheryl Crow, If It Makes You Happy	9	9	26	R. Kelly, I Believe I Can Fly
27	The Wallflowers, One Headlight	9	9	27	Hootie & The Blowfish, Only Wanna Be With U
28	Genesis, Misunderstanding	9	7	28	Mariah Carey, Always Be My Baby
29	UB40, Red Red Wine	9	6	29	Alanis Morissette, You Learn
30	Rod Stewart, Forever Young	9	8	30	Duncan Sheik, Barely Breathing

MIX 96.5		KS95		MIX 106.5	
Houston		Minneapolis		Baltimore	
PD: Lorrin Palagi APD/MD: Rich Anhorn		PD: Todd Fisher MD: Leighton Peck		PD: Greg Carpenter	
TW LW		TW LW		TW LW	
1	Savage Garden, Truly Madly Deeply	50	50	1	The Verve Pipe, The Freshmen
2	Tonic, If You Could Only See	50	34	2	Tonic, If You Could Only See
3	Sugar Ray, Fly	49	49	3	Matchbox 20, 3 Am
4	Elton John, Something About The Way You	49	50	4	Smash Mouth, Walk On The Sun
5	Robyn, Show Me Love	49	30	5	Elton John, Something About The Way You
6	Smash Mouth, Walk On The Sun	49	50	6	Sister Hazel, All For You
7	Amy Grant, Takes A Little Time	48	48	7	Sugar Ray, Fly
8	Matchbox 20, 3 Am	35	48	8	Chantal Kreviazuk, Surrounded
9	Lisa Loeb, I Do	34	32	9	Chumbawamba, Tubthumping
10	Billie Myers, Kiss The Rain	33	25	10	Lisa Loeb, I Do
11	Sundays, Summertime	33	35	11	Billie Myers, Kiss The Rain
12	Celine Dion, My Heart Will Go On	32	35	12	Green Day, Time Of Your Life
13	Backstreet Boys, Quit Playing Games	32	31	13	Third Eye Blind, Semi-Charmed Life
14	Bryan Adams, Back To You	31	34	14	Toad The Wet Sprocket, Crazy Life
15	Savage Garden, To The Moon And Back	31	31	15	Paula Cole, I Don't Want To Wait
16	Texas, Say What You Want	30	31	16	Bryan Adams, Back To You
17	Third Eye Blind, Semi-Charmed Life	29	33	17	Indigo Girls, Shame On You
18	Alana Davis, 32 Flavors	27	25	18	LeAnn Rimes, How Do I Live
19	Aqua, Turn Back Time	26	24	19	The Wallflowers, One Headlight
20	Sarah McLachlan, Sweet Surrender	26	24	20	Sarah McLachlan, Sweet Surrender
21	Loreena McKennitt, The Mummers' Dance	25	25	21	Alana Davis, 32 Flavors
22	Amanda Marshall, Fall From Grace	24	23	22	Sister Hazel, Happy
23	Backstreet Boys, As Long As You Love Me	24	28	23	Dave Matthews Band, Crash Into Me
24	Jimmy Ray, Are You Jimmy Ray?	23	4	24	Jewel, Foolish Games
25	Sister Hazel, All For You	20	9	25	Sarah McLachlan, Building A Mystery
26	Matchbox 20, Push	20	33	26	Duncan Sheik, Barely Breathing
27	Chumbawamba, Tubthumping	19	42	27	Ti Tuesday, Voices Carry
28	No Doubt, Don't Speak	18	22	28	Third Eye Blind, Semi-Charmed Life
29	Everything But The Girl, Missing	18	24	29	Counting Crows, A Long December
30	New Order, Bizarre Love Triangle	18	20	30	No Doubt, Don't Speak

Q104		STAR 101.5		KYKY	
Cleveland		Seattle		St. Louis	
PD: Mary Ellen Kachinske MD: Steve Brown		OM: Rob Dunlop PD: Kent Phillips		PD: Smokey Rivers MD: Greg Hewitt	
TW LW		TW LW		TW LW	
1	Sister Hazel, All For You	48	48	1	Savage Garden, Truly Madly Deeply
2	Chumbawamba, Tubthumping	45	44	2	Paula Cole, I Don't Want To Wait
3	Sugar Ray, Fly	43	44	3	Elton John, Something About The Way You
4	Elton John, Something About The Way You	43	38	4	Celine Dion, My Heart Will Go On
5	Amy Grant, Takes A Little Time	42	37	5	Robyn, Show Me Love
6	Matchbox 20, 3 Am	39	30	6	LeAnn Rimes, How Do I Live
7	Paula Cole, I Don't Want To Wait	38	43	7	Sister Hazel, All For You
8	Celine Dion, My Heart Will Go On	34	10	8	Bryan Adams, Back To You
9	Lisa Loeb, I Do	33	28	9	Sarah McLachlan, Sweet Surrender
10	Blessid Union Of Souls, Light In Your Eye	31	35	10	Backstreet Boys, As Long As You Love Me
11	Savage Garden, Truly Madly Deeply	31	29	11	Chumbawamba, Tubthumping
12	Billie Myers, Kiss The Rain	30	33	12	Third Eye Blind, Semi-Charmed Life
13	Chantal Kreviazuk, Surrounded	30	30	13	Amy Grant, Takes A Little Time
14	Sundays, Summertime	29	27	14	Sugar Ray, Fly
15	Sarah McLachlan, Sweet Surrender	29	30	15	Lisa Loeb, I Do
16	Dave Matthews Band, Crash Into Me	27	24	16	Jewel, Foolish Games
17	Smash Mouth, Walk On The Sun	26	26	17	Everything But The Girl, Missing
18</					

POWER PLAYLISTS

AIRPLAY Monitor
For Week Ending
January 18, 1998

MIX 105.1
WOMX Orlando PD: David Isreal MD: Tim Baldwin

	TW	LW
1 Sister Hazel, All For You	33	30
2 Paula Cole, I Don't Want To Wait	31	31
3 Shawn Colvin, Sunny Came Home	30	30
4 Celine Dion, My Heart Will Go On	27	11
5 Amy Grant, Takes A Little Time	26	22
6 Third Eye Blind, Semi-Charmed Life	25	21
7 Elton John, Something About The Way You	22	22
8 LeAnn Rimes, How Do I Live	22	27
9 The Wallflowers, One Headlight	21	24
10 Backstreet Boys, Out Playing Games	21	15
11 No Doubt, Don't Speak	19	13
12 Chumbawamba, Tubthumping	19	21
13 Jude Cole, Baby, It's Tonight	16	12
14 R.E.M., Losing My Religion	15	29
15 Hanson, Mmmmbop	15	14
16 Martin Page, In The House Of Stone And L	15	12
17 Bodeans, Closer To Free	14	12
18 Natalie Merchant, Wonder	14	12
19 Collective Soul, The World I Know	14	12
20 Sheryl Crow, Everyday Is A Winding Road	14	12
21 Seal, Crazy	14	11
22 Jon Secoska, Just Another Day	13	11
23 Paula Cole, Where Have All The Cowboys G	13	9
24 Spin Doctors, Little Miss Can't Be Wrong	13	11
25 The Cardigans, Lovefool	13	13
26 Melissa Etheridge, I'm The Only One	13	11
27 Lonestar, I've Been Thinking About You	13	12
28 Go West, Faithful	13	12
29 Go West, King Of Wishful Thinking	13	11
30 Donna Lewis, I Love You Always Forever	13	13

94WKTI
WKTI Milwaukee PD: Danny Clayton APD/MD: Leonard Peace

	TW	LW
1 Celine Dion, My Heart Will Go On	46	30
2 Chumbawamba, Tubthumping	45	46
3 Third Eye Blind, Semi-Charmed Life	45	47
4 Sugar Ray, Fly	45	46
5 Smash Mouth, Walkin' On The Sun	44	42
6 Paula Cole, I Don't Want To Wait	41	42
7 LeAnn Rimes, How Do I Live	36	29
8 Amy Grant, Takes A Little Time	29	24
9 Loreena McKennitt, The Mummers' Dance	27	25
10 Lisa Loeb, I Do	27	30
11 Sarah McLachlan, Sweet Surrender	27	27
12 Matchbox 20, 3 Am	26	9
13 Savage Garden, Truly Madly Deeply	25	20
14 Indigo Girls, Shame On You	25	20
15 Alana Davis, 32 Flavors	22	22
16 Shania Twain, You're Still The One	21	5
17 Billie Myers, Kiss The Rain	20	23
18 Blessed Union Of Souls, Light In Your Ey	19	22
19 OMC, How Bizarre	15	12
20 Duncan Sheik, Barely Breathing	15	16
21 The Wallflowers, One Headlight	14	12
22 No Doubt, Don't Speak	14	18
23 Robyn, Show Me Love	14	14
24 Sister Hazel, All For You	13	16
25 Tonic, If You Could Only See	13	10
26 Sheryl Crow, Everyday Is A Winding Road	12	13
27 Robyn, Do You Know What It Takes	11	11
28 Shawn Colvin, Sunny Came Home	11	17
29 Backstreet Boys, Out Playing Games	11	14
30 Jimmy Ray, Are You Jimmy Ray?	11	0

MIX 101.5
WRAL Raleigh PD/MD: Steve Reynolds

	TW	LW
1 Tonic, If You Could Only See	65	62
2 Smash Mouth, Walkin' On The Sun	64	63
3 Chumbawamba, Tubthumping	64	62
4 Sugar Ray, Fly	64	64
5 Matchbox 20, 3 Am	63	64
6 Fleetwood Mac, Silver Springs	62	61
7 Amy Grant, Takes A Little Time	60	61
8 Lisa Loeb, I Do	34	25
9 Third Eye Blind, Semi-Charmed Life	33	34
10 Paula Cole, I Don't Want To Wait	33	33
11 Elton John, Something About The Way You	33	28
12 The Verve Pipe, The Freshmen	29	40
13 Sister Hazel, All For You	29	30
14 Indigo Girls, Shame On You	29	30
15 Sarah McLachlan, Building A Mystery	29	33
16 Jewel, Foolish Games	28	29
17 Matchbox 20, Push	27	25
18 Duncan Sheik, Barely Breathing	26	27
19 Hootie & The Blowfish, Tucker's Town	25	23
20 The Wallflowers, One Headlight	25	31
21 Hootie & The Blowfish, I Go Blind	24	25
22 Dishwalla, Counting Blue Cars	24	21
23 Dave Matthews Band, Crash Into Me	24	25
24 Natalie Merchant, Jealousy	24	24
25 Shawn Colvin, Sunny Came Home	24	27
26 Sheryl Crow, A Change Would Do You Good	23	22
27 Bodeans, Closer To Free	23	25
28 Sheryl Crow, If It Makes You Happy	22	22
29 Sheryl Crow, Everyday Is A Winding Road	22	23
30 Jann Arden, Insensitive	21	21

KISN 97
KISN Salt Lake City PD: Burke Allen MD: Brian deGeus

	TW	LW
1 Savage Garden, Truly Madly Deeply	42	38
2 Chumbawamba, Tubthumping	41	43
3 LeAnn Rimes, How Do I Live	41	42
4 Paula Cole, I Don't Want To Wait	41	39
5 Celine Dion, My Heart Will Go On	39	37
6 Backstreet Boys, Out Playing Games	39	44
7 Jewel, Foolish Games	37	35
8 Amy Grant, Takes A Little Time	37	30
9 Elton John, Something About The Way You	35	35
10 Sister Hazel, All For You	30	31
11 Blessed Union Of Souls, Light In Your Ey	29	29
12 Loreena McKennitt, The Mummers' Dance	27	29
13 Sugar Ray, Fly	26	25
14 Mariah Carey, Butterfly	25	27
15 Third Eye Blind, Semi-Charmed Life	24	28
16 Savage Garden, I Want You	24	28
17 Lisa Loeb, I Do	24	15
18 Bryan Adams, Back To You	20	23
19 No Mercy, Where Do You Go	18	23
20 Doanna Lewis, I Love You Always Forever	18	22
21 Robyn, Show Me Love	16	24
22 Hootie & The Blowfish, I Go Blind	16	16
23 Mariah Carey, Always Be My Baby	16	19
24 No Doubt, Don't Speak	16	17
25 Shawn Colvin, Sunny Came Home	15	12
26 Duncan Sheik, Barely Breathing	14	21
27 Journey, When You Love A Woman	14	14
28 Go West, King Of Wishful Thinking	14	14
29 Toni Braxton, Un-Break My Heart	13	13

MIX 99.1
WMMX Milwaukee PD/MD: Brian Kelly APD: Jim Morales

	TW	LW
1 Indigo Girls, Shame On You	46	32
2 Sugar Ray, Fly	41	43
3 Paula Cole, I Don't Want To Wait	40	45
4 LeAnn Rimes, How Do I Live	44	47
5 Celine Dion, My Heart Will Go On	35	28
6 Amy Grant, Takes A Little Time	32	35
7 Savage Garden, Truly Madly Deeply	28	32
8 Smash Mouth, Walkin' On The Sun	27	26
9 Lisa Loeb, I Do	25	30
10 Third Eye Blind, Semi-Charmed Life	24	16
11 Matchbox 20, Push	22	16
12 The Wallflowers, One Headlight	19	22
13 Gina G, Ooh Aah... Just A Little Bit	17	14
14 Sheryl Crow, A Change Would Do You Good	16	19
15 Alanis Morissette, Ironic	16	13
16 Sister Hazel, All For You	16	17
17 Sheryl Crow, Everyday Is A Winding Road	16	16
18 Backstreet Boys, Out Playing Games	16	19
19 OMC, How Bizarre	16	23
20 Blue Swede, Hooked On A Feeling	15	13
21 Alanis Morissette, Head Over Heels	15	12
22 No Mercy, Where Do You Go	15	16
23 Spice Girls, You'll Be There	15	15
24 Mariah Carey, Always Be My Baby	15	11
25 Hanson, Mmmmbop	15	14
26 Del Amitri, Roll To Me	14	14
27 Hootie & The Blowfish, I Go Blind	14	15
28 Chumbawamba, Tubthumping	14	14
29 Jewel, You Were Meant For Me	13	12

THE RIVER
WVTY Pittsburgh PD: Chris Shebel MD: Scott Alexander

	TW	LW
1 Lisa Loeb, I Do	38	37
2 Sugar Ray, Fly	38	36
3 Smash Mouth, Walkin' On The Sun	37	38
4 Chumbawamba, Tubthumping	37	35
5 Sarah McLachlan, Sweet Surrender	37	25
6 Matchbox 20, 3 Am	36	37
7 Paula Cole, I Don't Want To Wait	35	38
8 Green Day, Time Of Your Life	35	21
9 Third Eye Blind, How's It Going To Be	31	19
10 Meredith Brooks, What Would Happen	28	24
11 Billie Myers, Kiss The Rain	27	24
12 Chantal Kreviazuk, Surrounded	27	26
13 The Wallflowers, Three Marienas	27	34
14 Sister Hazel, All For You	27	29
15 Fiona Apple, Criminal	27	26
16 Jewel, Foolish Games	26	24
17 Third Eye Blind, Semi-Charmed Life	26	38
18 Dave Matthews Band, Crash Into Me	26	24
19 Ben Folds Five, Brick	25	25
20 Tonic, If You Could Only See	25	23
21 Sunclays, Summertime	25	29
22 Matchbox 20, Push	24	22
23 Verve, Bitter Sweet Symphony	24	23
24 Alanis Davis, 32 Flavors	24	21
25 Sarah McLachlan, Building A Mystery	23	25
26 Loreena McKennitt, The Mummers' Dance	23	23
27 Indigo Girls, Shame On You	23	19
28 Barenaked Ladies, Brian Wilson	23	0
29 Sister Hazel, Haggy	20	20
30 Savage Garden, Truly Madly Deeply	15	0

STAR 95.7
WMTX Tampa PD: Chuck Morgan MD: Frank Brinsley

	TW	LW
1 Smash Mouth, Walkin' On The Sun	53	49
2 Lisa Loeb, I Do	52	55
3 Sugar Ray, Fly	51	51
4 Tonic, If You Could Only See	50	51
5 Matchbox 20, 3 Am	48	44
6 Chantal Kreviazuk, Surrounded	47	44
7 Meredith Brooks, What Would Happen	47	44
8 Paula Cole, I Don't Want To Wait	47	48
9 Billie Myers, Kiss The Rain	45	44
10 Third Eye Blind, How's It Going To Be	45	39
11 Loreena McKennitt, The Mummers' Dance	44	40
12 Sundays, Summertime	43	45
13 Alana Davis, 32 Flavors	39	35
14 Sister Hazel, All For You	34	34
15 Savage Garden, Truly Madly Deeply	33	31
16 Ben Folds Five, Brick	30	29
17 Sarah McLachlan, Sweet Surrender	29	31
18 Verve, Bitter Sweet Symphony	25	26
19 Dave Matthews Band, Crash Into Me	23	33
20 Green Day, Time Of Your Life	23	23
21 Matchbox 20, Push	22	32
22 Collective Soul, She Said	22	9
23 Barenaked Ladies, The Old Apartment	20	19
24 Jimmy Ray, Are You Jimmy Ray?	18	7
25 The Cardigans, Lovefool	16	15
26 Sarah McLachlan, Building A Mystery	16	16
27 Lauren Christy, Magazine	15	23
28 The Verve Pipe, The Freshmen	15	14
29 Sarah McLachlan, Possession	15	21
30 The Wallflowers, One Headlight	13	10

WENS
WENS Indianapolis PD: Greg Dunkin MD: Jim Cernone

	TW	LW
1 Sister Hazel, All For You	42	42
2 Sugar Ray, Fly	42	41
3 Paula Cole, I Don't Want To Wait	40	41
4 Amy Grant, Takes A Little Time	40	41
5 Jewel, Foolish Games	30	28
6 John Mellencamp, Without Expression	27	30
7 Tonic, If You Could Only See	29	29
8 Lisa Loeb, I Do	29	28
9 Elton John, Something About The Way You	29	30
10 Fleetwood Mac, Silver Springs	28	30
11 Backstreet Boys, Out Playing Games	28	28
12 Dave Matthews Band, Crash Into Me	28	30
13 Blessed Union Of Souls, Light In Your Ey	28	28
14 Sarah McLachlan, Building A Mystery	27	30
15 The Wallflowers, One Headlight	25	23
16 Sheryl Crow, A Change Would Do You Good	24	24
17 LeAnn Rimes, How Do I Live	23	25
18 Shawn Colvin, Sunny Came Home	23	24
19 Duncan Sheik, Barely Breathing	22	23
20 Paula Cole, Where Have All The Cowboys G	21	18
21 Savage Garden, I Want You	20	24
22 Savage Garden, Truly Madly Deeply	19	19
23 Matchbox 20, 3 Am	18	20
24 Third Eye Blind, Semi-Charmed Life	18	21
25 Mariah Carey & Boyz II Men, One Sweet Da	16	12
26 Sarah McLachlan, Sweet Surrender	16	18
27 Journey, When You Love A Woman	15	15
28 Merrill Bainbridge, Mouth	15	14
29 Sophie B. Hawkins, As I Lay Me Down	15	13
30 Collective Soul, December	15	15

KISS FM
WAKS Tampa PD: Mason Dixon MD: Rico Blanco

	TW	LW
1 Celine Dion, My Heart Will Go On	45	37
2 Smash Mouth, Walkin' On The Sun	44	42
3 Janet, Together Again	43	42
4 Savage Garden, Truly Madly Deeply	41	43
5 Robyn, Show Me Love	41	41
6 John Mellencamp, Without Expression	30	29
7 Matchbox 20, 3 Am	35	25
8 Elton John, Something About The Way You	31	34
9 Backstreet Boys, As Long As You Love Me	30	38
10 Loreena McKennitt, The Mummers' Dance	27	18
11 Billie Myers, Kiss The Rain	27	24
12 Jimmy Ray, Are You Jimmy Ray?	26	2
13 Sugar Ray, Fly	22	17
14 LeAnn Rimes, How Do I Live	21	37
15 Alanis Morissette, Ironic	19	22
16 Chumbawamba, Tubthumping	19	18
17 Lisa Loeb, I Do	17	11
18 Bryan Adams, Back To You	16	12
19 Jewel, Foolish Games	15	16
20 Blessed Union Of Souls, Light In Your Ey	12	15
21 Sister Hazel, All For You	12	20
22 Boyz II Men, A Song For Mama	12	6
23 Duncan Sheik, Barely Breathing	11	37
24 Gary Barlow, So Help Me Girl	11	12
25 The Wallflowers, One Headlight	11	9
26 Sister Sara, Life Song	11	16
27 The Cardigans, Lovefool	10	9
28 Celine Dion, River Deep, Mountain High	9	10
29 Babyface, How Came, How Long	9	18
30 Shania Twain, You're Still The One	9	0

MAGIC 105
KSMG San Antonio PD: Ardy Holt MD: Darla Thomas

	TW	LW
1 LeAnn Rimes, How Do I Live	41	42
2 Elton John, Something About The Way You	40	42
3 Sarah McLachlan, Building A Mystery	40	38
4 Paula Cole, I Don't Want To Wait	37	41
5 Lisa Loeb, I Do	30	21
6 Jewel, Foolish Games	28	28
7 Chumbawamba, Tubthumping	26	20
8 Duncan Sheik, Barely Breathing	26	25
9 Backstreet Boys, Out Playing Games	24	26
10 Celine Dion, My Heart Will Go On	23	21
11 Shawn Colvin, Sunny Came Home	23	26
12 Bryan Adams, Back To You	20	19
13 Chantal Kreviazuk, Surrounded	20	21
14 The Wallflowers, One Headlight	19	16
15 John Mellencamp, Without Expression	19	20
16 Savage Garden, Truly Madly Deeply	19	2
17 No Doubt, Don't Speak	18	18
18 Goo Goo Dolls, Name	17	18
19 Billie Myers, Kiss The Rain	17	10
20 Elton John, Candle In The Wind	17	10
21 Sarah McLachlan, Possession	17	10
22 Jewel, You Were Meant For Me	15	17
23 Hanson, Mmmmbop	15	14
24 Collective Soul, The World I Know	14	19
25 Fiona Apple, Criminal	12	12
26 Phil Collins, It's In Your Eyes	11	18
27 Dishwalla, Counting Blue Cars	11	11
28 Savage Garden, I Want You	11	10
29 Tracy Chapman, Give Me One Reason	11	11
30 Journey, If I Should Break Your Heart	11	10

FM100
WMC Memphis PD: Russ Morley MD: Bruce Wayne

	TW	LW
1 Celine Dion, My Heart Will Go On	44	34
2 Blessed Union Of Souls, Light In Your Ey	40	49
3 Sister Hazel, All For You	38	23
4 Elton John, Something About The Way You	37	45
5 Lisa Loeb, I Do	37	45
6 Backstreet Boys, Out Playing Games	30	32
7 Amy Grant, Takes A Little Time	29	38
8 Bryan Adams, Back To You	29	30
9 Billie Myers, Kiss The Rain	27	28
10 Savage Garden, Truly Madly Deeply	27	30
11 Chumbawamba, Tubthumping	25	16
12 Sarah McLachlan, Sweet Surrender	22	24
13 Paula Cole, I Don't Want To Wait	22	19
14 LeAnn Rimes, How Do I Live	20	12
15 Robyn, Show Me Love	20	9
16 The Wallflowers, One Headlight	19	18
17 Third Eye Blind, Semi-Charmed Life	19	20
18 Matchbox 20, 3 Am	19	18
19 Loreena McKennitt, The Mummers' Dance	18	19
20 Duncan Sheik, Barely Breathing	17	19
21 Savage Garden, I Want You	15	16
22 Jewel, Foolish Games	16	13
23 Chantal Kreviazuk, Surrounded	16	17
24 Shania Twain, You're Still The One	15	6
25 John Mellencamp, Without Expression	14	15
26 Sheryl Crow, A Change Would Do You Good	13	11
27 Gin Blossoms, Follow You Down	13	12
28 Dishwalla, Counting Blue Cars	13	10
29 Do Talk, Just Between You And Me	13	13
30 Paula Cole, Where Have All The Cowboys G	13	13

WSNE
WSNE Providence APD/MD: Jack Casey

	TW
--	----

BDS IMPACT

★ ★ ★ **AIRPOWER** ★ ★ ★
 (Minimum 700 detections for the first time)

NO RECORDS QUALIFIED FOR AIRPOWER THIS WEEK

AIRPOWER BOUND

Total Plays/Gain

MEREDITH BROOKS 696/54

What Would Happen (Capitol)

Total Stations: 41/Chart Move: 28-26

Heavy (30+ plays): 11 KAMX, KBBT, KCPN, KMXB, KOZN, KTNP, WMTX, WMBX, WPLL, WPTE, WTMX

Medium (15-29): 10 KLLC, KYSR, KZZO, WEZB, WKDD, WQAL, WQLH, WSHE, WSNE, WVTY

Light (Under 15): 20

New Airplay This Week: 1 KBEE

BEN FOLDS FIVE 683/108

Brick (550 Music)

Total Stations: 28/Chart Move: 30-27

Heavy (30+): 10 KAMX, KBBT, KOZN, KPEK, KPLZ, KYSR, WBMX, WKZL, WMTX, WVIC

Medium (15-29): 11 KLLC, KTNP, KYSR, KZZO, KZZP, WALC, WBAM, WLNK, WPTE, WSHE, WVTY

Light (Under 15): 7

New Airplay This Week: 2 WLNK, WVIC

BRYAN ADAMS 680/22

Back To You (A&M)

Total Stations: 41/Chart Move: 27-28

Heavy (30+): 3 KHMx, KZZP, WEZB

Medium (15-29): 21 KDMX, KISN, KPEK, KPLZ, KSMG, KURB, KUUU, KYKY, WAKS, WBMX, WIOG, WKDD, WMC, WMLL, WPLJ, WQLH, WRQX, WVIC, WVAE, WVMX, WYXR

Light (Under 15): 17

New Airplay This Week: 3 KYSR, WVMX, WVMX

SISTER HAZEL 614/-24

Happy (Universal)

Total Stations: 38/Chart Move: 29-29

Heavy (30+): 6 KAMX, KCPN, KOZN, KPEK, WPTE, WSHE

Medium (15-29): 15 KBBT, KFMB, KPLZ, KUUU, KZZO, KZZP, WBMX, WKDD, WLNK, WMBX, WPLL, WQAL, WQLH, WVTY, WVMX

Light (Under 15): 17

THE VERVE 586/24

Bitter Sweet Symphony (VC/Hut/Virgin)

Total Stations: 28/Chart Move: 31-30

Heavy (30+): 8 KAMX, KBBT, KFMB, KOZN, KPEK, KYSR, WBAM, WBMX

Medium (15-29): 13 KHMx, KCPN, KLLC, KPLZ, KTNP, KYSR, KZZP, WKZL, WLNK, WMTX, WPTE, WSHE, WVTY

Light (Under 15): 7

New Airplay This Week: 1 KYSR

BLESSID UNION 466/-21

Light In Your Eyes (Capitol)

Total Stations: 30/Chart Move: 32-31

Heavy (30+): 3 KZZP, WMC, WQAL

Medium (15-29): 14 KDMX, KISN, KLLC, KURB, WAEV, WENS, WKDD, WTKI, WMMX, WVMX, WMLL, WPLJ, WQLH, WVMX

Light (Under 15): 13

New Airplay This Week: 2 WAKS, WVMX

ROBYN 464/55

Show Me Love (RCA)

Total Stations: 20/Chart Move: 34-32

Heavy (30+): 7 KHMx, KSII, KYKY, WAKS, WALC, WEZB, WQLH

Medium (15-29): 7 KISN, KURB, WAEV, WKDD, WKQI, WMC, WMLL

Light (Under 15): 6

New Airplay This Week: 2 WAEV, WSNE

BACKSTREET BOYS 380/92

As Long As You Love Me (Jive)

Total Stations: 22/Chart Move: 37-33

Heavy (30+): 5 KSII, WAKS, WEZB, WKQI, WQLH

Medium (15-29): 6 KHMx, KYKY, WIOG, WKDD, WMLL, WPLJ

Light (Under 15): 11

New Airplay This Week: 5 KBEE, WAEV, WIOG, WMMX, WPLJ

JIMMY RAY 377/228

Are You Jimmy Ray? (Epic)

Total Stations: 24/Chart Move: Debut 34

Heavy (30+): 1 KYSR

Medium (15-29): 13 KDMX, KHMx, KPLZ, KTNP, KYSR, KUUU, KZZP, WAKS, WBAM, WEZB, WKQI, WMTX, WPLJ

Light (Under 15): 10

New Airplay This Week: 10 KHMx, KPLZ, KTNP, KYSR, WAKS, WEZB, WTKI, WPLJ, WQLH, WVIC

EDWIN MCCAIN 284/127

I'll Be (Lava/Atlantic)

Total Stations: 17/Chart Move: Debut 38

Heavy (30+): 4 KAMX, WBAM, WPLL, WTMX

Medium (15-29): 4 KYSR, WKZL, WLNK, WSHE

Light (Under 15): 9

New Airplay This Week: 4 KYSR, KZZP, WPTE, WTMX

BARENAKED LADIES 284/58

Brian Wilson (Reprise)

Total Stations: 11/Chart Move: Debut 39

Heavy (30+): 4 KLLC, KOZN, KTNP, WBMX

Medium (15-29): 5 KAMX, KBBT, WPTE, WSHE, WVTY

Light (Under 15): 2

New Airplay This Week: 1 WVTY

CHART BOUND

Total Plays/Gain

LAUREN CHRISTY 239/47

Magazine (Mercury)

Total Stations: 15

Heavy (30+): 0

Medium (15-29): 9 KTNP, KYSR, KUUU, WIOG, WKDD, WMTX, WMBX, WQLH, WTMX

Light (Under 15): 6

New Airplay This Week: 2 WIOG, WTMX

JANET 197/23

Together Again (Virgin)

Total Stations: 16

Heavy (30+): 4 KSII, WAKS, WEZB, WQLH

Medium (15-29): 2 WKDD, WMLL

Light (Under 15): 10

LONGPIGS 179/-1

On And On (Mother/Island)

Total Stations: 9

Heavy (30+): 1 KZZO

Medium (15-29): 6 KAMX, KLLC, WBAM, WMBX, WPTE, WSHE

Light (Under 15): 2

THE PISTOLEROS 152/23

My Guardian Angel (Hollywood)

Total Stations: 9

Heavy (30+): 2 KCPN, WPLL

Medium (15-29): 3 KMXB, KTNP, KZZP

Light (Under 15): 4

New Airplay This Week: 1 WBMX

MOST NEW STATIONS No. Of Stations

JIMMY RAY 10

Are You Jimmy Ray? (Epic)

PAULA COLE 6

Me (Imago/Warner Bros.)

BACKSTREET BOYS 5

As Long As You Love Me (Jive)

MARCY PLAYGROUND 148/47

Sex And Candy (Capitol)

Total Stations: 10

Heavy (30+): 2 KFMB, WSHE

Medium (15-29): 2 KCPN, WPLL

Light (Under 15): 6

New Airplay This Week: 3 KOZN, WBAM, WMTX

BARENAKED LADIES 144/18

The Old Apartment (Reprise)

Total Stations: 6

Heavy (30+): 2 KAMX, WBMX

Medium (15-29): 3 KTNP, WKZL, WMTX

Light (Under 15): 1

BIG HEAD TODD & THE MONSTERS 144/1

Please Don't Tell Her (Revolution)

Total Stations: 6

Heavy (30+): 2 WPTE, WTMX

Medium (15-29): 3 KTNP, WKZL, WMBX

Light (Under 15): 1

BEHAN JOHNSON 123/16

World Keeps Spinning (RCA)

Total Stations: 9

Heavy (30+): 0

Medium (15-29): 4 KLLC, KPLZ, KYSR, WQLH

Light (Under 15): 5

New Airplay This Week: 2 WKQI, WMTX

★ **PAULA COLE 116/113**

Me (Imago/Warner Bros.)

Total Stations: 12

Heavy (30+): 0

Medium (15-29): 3 KAMX, KBBT, WBMX

Light (Under 15): 9

New Airplay This Week: 6 KAMX, KBBT, KOZN, KPLZ, WBMX, WKZL

USHER 93/12

You Make Me Wanna... (LaFace/Arista)

Total Stations: 5

Heavy (30+): 2 KSII, WQLH

Medium (15-29): 0

Light (Under 15): 3

New Airplay This Week: 1 WAKS

RICHARD MARX & DONNA LEWIS 82/7

At The Beginning (Atlantic)

Total Stations: 10

Heavy (30+): 1 KSSK

Medium (15-29): 1 WVAE

Light (Under 15): 8

New Airplay This Week: 1 WWDE

EVERCLEAR 81/9

Everything To Everyone (Capitol)

Total Stations: 5

Heavy (30+): 0

Medium (15-29): 2 KPEK, KZZO

Light (Under 15): 3

New Airplay This Week: 1 WPTE

DARYL HALL JOHN OATES 79/8

Promise Ain't Enough (Push)

Total Stations: 4

Heavy (30+): 1 KSSK

Medium (15-29): 1 WWDE

Light (Under 15): 2

New Airplay This Week: 1 KURB

THIS WEEK	LAST WEEK	WEEKS ON	TITLE/IMPRINT/PROMOTION LABEL	ARTIST	TW	LW	DETECTIONS	
			★ ★ ★ No. 1 ★ ★ ★					
	1	21	WALKIN' ON THE SUN INTERSCOPE	SMASH MOUTH	2279	2248		
(2)	5	13	3 AM LAVA/ATLANTIC	MATCHBOX 20	2156	2062		
3	2	17	TUBTHUMPING REPUBLIC/UNIVERSAL	CHUMBAWAMBA	2103	2228		
4	3	28	I DON'T WANT TO WAIT IMAGO/WARNER BROS.	PAULA COLE	2045	2198		
5	4	24	FLY LAVA/ATLANTIC	SUGAR RAY	1998	2134		
(6)	6	13	I DO GEFEN	LISA LOEB	1985	1981		
7	7	40	ALL FOR YOU UNIVERSAL	SISTER HAZEL	1564	1619		
(8)	10	10	TRULY MADLY DEEPLY COLUMBIA	SAVAGE GARDEN	1561	1411		
9	8	31	IF YOU COULD ONLY SEE POLYDOR/A&M	TONIC	1536	1579		
(10)	11	11	SWEET SURRENDER ARISTA	SARAH MCLACHLAN	1472	1333		
11	9	39	SEMI-CHARMED LIFE ELEKTRA/EEG	THIRD EYE BLIND	1325	1482		
(12)	13	12	KISS THE RAIN UNIVERSAL	BILLIE MYERS	1285	1214		
(13)	24	3	MY HEART WILL GO ON 550 MUSIC	CELINE DION	1285	911		
(14)	16	7	THE MUMMERS' DANCE QUINLAN ROAD/WARNER BROS.	LOREENA MCKENITT	1208	1063		
(15)	17	12	HOW'S IT GOING TO BE ELEKTRA/EEG	THIRD EYE BLIND	1204	1060		
16	14	19	SOMETHING ABOUT THE WAY YOU LOOK TONIGHT ROCKET/A&M	ELTON JOHN	1123	1143		
17	12	30	PUSH LAVA/ATLANTIC	MATCHBOX 20	1053	1258		
(18)	22	6	TIME OF YOUR LIFE (GOOD RIDDANCE) REPRIS	GREEN DAY	1000	915		
(19)	25	14	SURROUNDED COLUMBIA	CHANTAL KREVIUZUK	936	898		
20	19	50	ONE HEADLIGHT INTERSCOPE	THE WALLFLOWERS	915	983		
21	20	10	32 FLAVORS ELEKTRA/EEG	ALANA DAVIS	906	937		
22	21	23	TAKES A LITTLE TIME A&M	AMY GRANT	899	932		
23	18	16	SUMMERTIME DGC/GEFFEN	THE SUNDAYS	895	1021		
24	23	22	HOW DO I LIVE CURB	LEANN RIMES	842	912		
25	26	23	CRIMINAL CLEAN SLATE/WORK	FIONA APPLE	720	833		
(26)	28	7	WHAT WOULD HAPPEN CAPITOL	MEREDITH BROOKS	696	642		
(27)	30	5	BRICK 550 MUSIC	BEN FOLDS FIVE	683	575		
(28)	27	7	BACK TO YOU A&M	BRYAN ADAMS	680	658		
29	29	8	HAPPY UNIVERSAL	SISTER HAZEL	614	638		
(30)	31	6	BITTER SWEET SYMPHONY VCHUT/VRGIN	THE VERVE	586	562		
31	32	9	LIGHT IN YOUR EYES CAPITOL	BLESSID UNION	466	487		
(32)	34	10	SHOW ME LOVE RCA	ROBYN	464	409		
(33)	37	2	AS LONG AS YOU LOVE ME JIVE	BACKSTREET BO				

ADULT TOP 40

ADULT CONTEMPORARY

BEN FOLDS FIVE 683/108 Brick (550 Music) Total Stations: 28 Chart Move: 30-27

MEREDITH BROOKS 696/54 What Would Happen (Capitol) Total Stations: 41 Chart Move: 28-26

CELINE DION 1285/374 My Heart Will Go On (550 Music) Total Stations: 46 Chart Move: 24-13

BRYAN ADAMS 490/59 Back To You (A&M) Total Stations: 40 Chart Move: 17-15

BACKSTREET BOYS 225/76 As Long As You Love Me (Jive) Total Stations: 20 Chart Move: 30-27

GREEN DAY 1000/85 Time Of Your Life (Good Riddance) (Reprise) Total Stations: 47 Chart Move: 25-18

CHANTAL KREVIASZUK 936/38 Surrounded (Columbia) Total Stations: 43 Chart Move: 25-19

LISA LOEB 1985/4 I Do (Geffen) Total Stations: 63 Chart Move: 6-6

BLESSID UNION 297/27 Light In Your Eyes (Capitol) Total Stations: 31 Chart Move: 24-22

CELINE DION 1397/205 My Heart Will Go On (550 Music) Total Stations: 55 Chart Move: 3-1

MATCHBOX 20 2156/94 3 AM (Lava/Atlantic) Total Stations: 63 Chart Move: 5-2

SARAH MCLACHLAN 1472/139 Sweet Surrender (Arista) Total Stations: 53 Chart Move: 11-10

LORENA MCKENITT 1208/145 The Mummers' Dance (Quinn Road/Warner Bros.) Total Stations: 56 Chart Move: 16-14

KENNY G 594/10 Loving You (Arista) Total Stations: 51 Chart Move: 13-11

LISA LOEB 219/47 I Do (Geffen) Total Stations: 14 Chart Move: 28-28

BILLIE MYERS 1285/71 Kiss The Rain (Universal) Total Stations: 57 Chart Move: 13-12

SAVAGE GARDEN 1561/150 Truly Madly Deeply (Columbia) Total Stations: 51 Chart Move: 10-8

THIRD EYE BLIND 1204/144 How's It Going To Be (Elektra/EEG) Total Stations: 56 Chart Move: 17-15

KENNY LOGGINS 127/9 Now That I Know Love (Columbia) Total Stations: 13 Chart Move: 23-17

SAVAGE GARDEN 424/138 Truly Madly Deeply (Columbia) Total Stations: 36 Chart Move: 23-17

BDS IMPACT

AIRPOWER

Savage Garden 424/138

Truly Madly Deeply (Columbia)

Total Stations: 36/Chart Move: 23-17
Heavy (21+ plays): 9 KGBY, KLSY, WALK, WINK, WJDX, WMJQ, WMXS, WRMF, WRVF
Medium (14-20): 5 KEZK, KEZR, KLYF, WGSY, WLTS
Light (Under 14): 22
New Airplay This Week: 5 KEZK, KLYF, WDEF, WMGS, WTCC

AIRPOWER BOUND

CHART BOUND

Blessid Union 297/27

Light In Your Eyes (Capitol)

Total Stations: 31/Chart Move: 24-22
Heavy (21+ plays): 4 KLYF, WGSY, WMJQ, WRMF
Medium (14-20): 4 WDOK, WMGS, WMXS, WRVF
Light (Under 14): 23
New Airplay This Week: 2 WALK, WYJB

Backstreet Boys 225/76

As Long As You Love Me (Jive)

Total Stations: 20/Chart Move: 30-27
Heavy (21+): 2 WMJQ, WRVF
Medium (14-20): 6 KBIG, WALK, WINK, WLTS, WMGS, WMXS
Light (Under 14): 12
New Airplay This Week: 4 KBIG, KTDY, WDEF, WINK

Lisa Loeb 219/47

I Do (Geffen)

Total Stations: 14/Chart Move: 28-28
Heavy (21+): 2 WGSY, WJDX
Medium (14-20): 7 KEZR, KLYF, WLTS, WMJQ, WMXS, WTCC, WTFM
Light (Under 14): 5
New Airplay This Week: 2 WLTS, WMJQ

John Tesh feat. James Ingram 203/162

Give Me Forever (I Do) (GTSP/Mercury)

Total Stations: 31/Chart Move: Debut 29
Heavy (21+): 0
Medium (14-20): 5 KGBY, WBBO, WLIT, WRRM, WTCC
Light (Under 14): 26
New Airplay This Week: 14 KEZK, KGBY, KKCW, WBBO, WDOK, WEZF, WGSY, WLIF, WLTE, WMYI, WRCH, WRRM, WSHH, WTCC

Kenny Loggins 127/9

Now That I Know Love (Columbia)

Total Stations: 13
Heavy (21+): 2 WAHR, WINK
Medium (14-20): 3 WGSY, WMXS, WTCC
Light (Under 14): 8
New Airplay This Week: 1 WLHT

Sarah McLachlan 125/36

Sweet Surrender (Arista)

Total Stations: 8
Heavy (21+): 2 KEZR, WJDX
Medium (14-20): 1 KTDY
Light (Under 14): 5
New Airplay This Week: 3 KTDY, WRVF, WTCC

Ray Vega 117/40

Even More (BNA/RCA Nashville)

Total Stations: 26
Heavy (21+): 0
Medium (14-20): 0
Light (Under 14): 26
New Airplay This Week: 4 WBEB, WLAC, WLHT, WYJB

Shania Twain 110/76

You're Still The One (Mercury)

Total Stations: 16
Heavy (21+): 0
Medium (14-20): 14
Light (Under 14): 14
New Airplay This Week: 10 KISC, WDEF, WLIF, WLIT, WLTE, WLTW, WMGS, WMJQ, WRCH, WTCC

Leann Rimes 105/21

You Light Up My Life (Curb)

Total Stations: 26
Heavy (21+): 0
Medium (14-20): 0
Light (Under 14): 26
New Airplay This Week: 1 WGSY

Loreena McKennitt 91/30

The Mummers' Dance (Quinlan Road/Warner Bros.)

Total Stations: 9
Heavy (21+): 1 WMJQ

MOST NEW STATIONS

John Tesh feat. James Ingram 14

Give Me Forever (I Do) (GTSP/Mercury)

Shania Twain 10

You're Still The One (Mercury)

Fleetwood Mac 5

Landslide (Reprise)

Savage Garden 5

Truly Madly Deeply (Columbia)

Medium (14-20): 2 KIMN, KKCW
Light (Under 14): 6
New Airplay This Week: 3 WJDX, WLTS, WRMF

Samantha Cole 80/3

Without You (Universal)

Total Stations: 12
Heavy (21+): 0
Medium (14-20): 1 KTDY
Light (Under 14): 11

Boyz II Men 77/3

A Song For Mama (Motown)

Total Stations: 19
Heavy (21+): 0
Medium (14-20): 1 KTDY
Light (Under 14): 18

Fleetwood Mac 63/47

Landslide (Reprise)

Total Stations: 9
Heavy (21+): 0
Medium (14-20): 1 WDOK
Light (Under 14): 8
New Airplay This Week: 5 KKCW, WDOK, WMGS, WMXS, WTCC

John Mellencamp 62/-1

Without Expression (Mercury)

Total Stations: 3
Heavy (21+): 2 WGSY, WMJQ
Medium (14-20): 1 WMXS
Light (Under 14): 0

Janet 58/18

Together Again (Virgin)

Total Stations: 10
Heavy (21+): 1 WASH
Medium (14-20): 1 KGBY
Light (Under 14): 8
New Airplay This Week: 1 KLSY

Matchbox 20 51/26

3 AM (Lava/Antarctic)

Total Stations: 7
Heavy (21+): 0
Medium (14-20): 2 KLYF, KTDY
Light (Under 14): 5
New Airplay This Week: 1 KEZR

Table with columns: THIS WEEK, LAST WEEK, WEEKS ON, TITLE/IMPRINT/PROMOTION LABEL, ARTIST, TW, LW. Includes songs like 'My Heart Will Go On', 'Something About The Way You Look Tonight', etc.

Records showing an increase in detections over the previous week, regardless of chart movement. A record which has been on the chart for more than 20 weeks will not receive a bullet, even if it registers an increase in detections.

ADULT CONTEMPORARY POWER PLAYLISTS

Grid of 12 radio station playlists including 106.7 LITE FM, KOST, KBIG, 93.9 LITE FM, B101, WINDY 100, K101, KVIL, SOFT ROCK 97.1, WDOK, WLTE, and COAST 97.3.

Airpower awarded to those records which attain 400 detections for the first time. New airplay lists those stations registering six or more detections per week on a record for the first time.



POWER PLAYLISTS

STAR 98.7		MIX 101.9		MIX 98.5	
KYSR PD: Angela Perelli Los Angeles APD/MD: Chris Ebbott		WTMX PD: Barry James Chicago APD/MD: Jaime Kartak		WBMX PD: Greg Strassell Boston MD: Michelle Buczynski	
TW	LW	TW	LW	TW	LW
1	64	1	46	1	46
2	59	2	45	2	45
3	63	3	43	3	44
4	62	4	43	4	43
5	61	5	43	5	43
6	65	6	42	6	42
7	42	7	42	7	42
8	44	8	42	8	42
9	43	9	41	9	41
10	43	10	41	10	41
11	44	11	41	11	41
12	43	12	41	12	41
13	43	13	41	13	41
14	41	14	41	14	41
15	41	15	41	15	41
16	42	16	41	16	41
17	41	17	41	17	41
18	41	18	41	18	41
19	41	19	41	19	41
20	41	20	41	20	41
21	41	21	41	21	41
22	41	22	41	22	41
23	41	23	41	23	41
24	41	24	41	24	41
25	41	25	41	25	41
26	41	26	41	26	41
27	41	27	41	27	41
28	41	28	41	28	41
29	41	29	41	29	41
30	41	30	41	30	41

ALICE 97.3		MIX 102.9		PLANET 96.3	
KLLC PD: Louis Kaplan San Francisco APD/MD: Julie Stoekel		KDMX PD: Jimmy Seal Dallas MD: Lisa Thomas		WPLT PD: Garrett Michaels Detroit MD: Alex Tear	
TW	LW	TW	LW	TW	LW
1	42	1	53	1	48
2	44	2	53	2	48
3	39	3	52	3	47
4	39	4	52	4	46
5	37	5	45	5	45
6	37	6	45	6	44
7	32	7	46	7	43
8	35	8	46	8	43
9	31	9	44	9	43
10	29	10	44	10	43
11	29	11	44	11	43
12	27	12	44	12	43
13	29	13	44	13	43
14	29	14	44	14	43
15	24	15	44	15	43
16	24	16	44	16	43
17	24	17	44	17	43
18	24	18	44	18	43
19	24	19	44	19	43
20	24	20	44	20	43
21	24	21	44	21	43
22	24	22	44	22	43
23	24	23	44	23	43
24	24	24	44	24	43
25	24	25	44	25	43
26	24	26	44	26	43
27	24	27	44	27	43
28	24	28	44	28	43
29	24	29	44	29	43
30	24	30	44	30	43

WBOS		ALICE 104		THE PLANET	
WBOS PD: Jim Herron Boston MD: Cliff Nash		WALC PD: Bob Davis St. Louis APD/MD: Tommy Mattern		KKPN PD: Mike Marino Houston MD: Donna McCoy	
TW	LW	TW	LW	TW	LW
1	39	1	82	1	53
2	39	2	82	2	54
3	38	3	83	3	53
4	38	4	83	4	53
5	36	5	67	5	49
6	33	6	66	6	45
7	25	7	66	7	45
8	25	8	66	8	45
9	21	9	55	9	43
10	21	10	55	10	43
11	21	11	55	11	43
12	21	12	55	12	43
13	21	13	55	13	43
14	21	14	55	14	43
15	21	15	55	15	43
16	21	16	55	16	43
17	21	17	55	17	43
18	21	18	55	18	43
19	21	19	55	19	43
20	21	20	55	20	43
21	21	21	55	21	43
22	21	22	55	22	43
23	21	23	55	23	43
24	21	24	55	24	43
25	21	25	55	25	43
26	21	26	55	26	43
27	21	27	55	27	43
28	21	28	55	28	43
29	21	29	55	29	43
30	21	30	55	30	43

STAR 100.7		96.5 TIC		THE ZONE	
KFMB OM/PD: Tracy Johnson San Diego MD: Greg Simms		WVIC OM: Steve Salhany Hartford MD: David Simpson		KZZO PD: Carmy Ferreri Sacramento MD: Dave Daniels	
TW	LW	TW	LW	TW	LW
1	58	1	47	1	60
2	58	2	47	2	60
3	53	3	48	3	59
4	54	4	44	4	59
5	52	5	44	5	59
6	48	6	44	6	59
7	48	7	44	7	59
8	43	8	43	8	59
9	43	9	43	9	59
10	41	10	43	10	59
11	41	11	43	11	59
12	41	12	43	12	59
13	41	13	43	13	59
14	41	14	43	14	59
15	41	15	43	15	59
16	41	16	43	16	59
17	41	17	43	17	59
18	41	18	43	18	59
19	41	19	43	19	59
20	41	20	43	20	59
21	41	21	43	21	59
22	41	22	43	22	59
23	41	23	43	23	59
24	41	24	43	24	59
25	41	25	43	25	59
26	41	26	43	26	59
27	41	27	43	27	59
28	41	28	43	28	59
29	41	29	43	29	59
30	41	30	43	30	59

THIS WEEK	LAST WEEK	WKS. ON CHART	DETECTIONS	
			TW	LW
★★★ NO. 1 ★★★				
1	1	15	3 AM LAVA/ATLANTIC	1701
2	2	22	WALKIN' ON THE SUN INTERSCOPE	1600
3	3	14	I DO GEFFEN	1348
4	4	19	TUBTHUMPING REPUBLIC/UNIVERSAL	1344
5	8	12	SWEET SURRENDER ARISTA	1150
6	9	12	HOW'S IT GOING TO BE ELEKTRA/EEG	1064
7	6	34	IF YOU COULD ONLY SEE POLYDOR/A&M	1203
8	5	26	FLY LAVA/ATLANTIC	1251
9	11	7	THE MUMMERS' DANCE QUINLAN ROAD/WARNER BROS.	984
10	10	7	TIME OF YOUR LIFE (GOOD RIDDANCE) REPRISE	1054
11	7	27	I DON'T WANT TO WAIT IMAGOWARNER BROS.	1169
12	20	6	BRICK 550 MUSIC	757
13	15	13	SURROUNDED COLUMBIA	860
14	13	40	ALL FOR YOU UNIVERSAL	871
15	12	10	32 FLAVORS ELEKTRA/EEG	908
16	17	9	BITTER SWEET SYMPHONY VC/HUT/VIRGIN	832
17	18	11	KISS THE RAIN UNIVERSAL	811
18	16	19	SUMMERTIME DGC/GEFFEN	854
19	14	25	CRIMINAL CLEAN SLATE/WORK	871
20	19	39	SEMI-CHARMED LIFE ELEKTRA/EEG	790
21	21	8	HAPPY UNIVERSAL	638
22	22	5	WHAT WOULD HAPPEN CAPITOL	510
★★★ AIRPOWER ★★★				
23	23	3	TRULY MADLY DEEPLY COLUMBIA	442
24	25	2	SEX AND CANDY CAPITOL	399
25	NEW		I'LL BE LAVA/ATLANTIC	214
26	28	5	BRIAN WILSON REPRISE	326
27	24	18	LEGEND OF A COWGIRL COLUMBIA	403
28	NEW		MY HEART WILL GO ON 550 MUSIC	203
29	27	4	ON AND ON MOTHER/ISLAND	327
30	30	2	CRAZY LIFE COLUMBIA	300

Records showing an increase in detections over the previous week, regardless of chart movement. A record which has been on the chart for more than 20 weeks will not receive a bullet, even if it registers an increase in detections. Airpower awarded to those records which attain 500 detections for the first time. If two records are tied in number of plays, the record being played on more stations is placed first. ©1998, Billboard/BPI Communications.

KZZP		PLANET 103.5		WLIR	
KZZP PD: Dan Persigehl Phoenix MD: Dave Cooper		WPLL PD: Rob Roberts Miami APD: Robert Archer		WLIR PD: Jeff Levine Long Island Mus. Coord: Lynda Lopez	
TW	LW	TW	LW	TW	LW
1	46	1	46	1	46
2	47	2	46	2	46
3	47	3	46	3	46
4	46	4	46	4	46
5	46	5	46	5	46
6	47	6	46	6	46
7	47	7	46	7	46
8	47	8	46	8	46
9	46	9	46	9	46
10	46	10	46	10	46
11	46	11	46	11	46
12	46	12	46	12	46
13	46	13	46	13	46
14	46	14	46	14	46
15	46	15	46	15	46
16	46	16	46	16	46
17	46	17	46	17	46
18	46	18	46	18	46
19	46	19	46	19	46
20	46	20	46	20	46
21	46	21	46	21	46
22	46	22	46	22	46
23	46	23	46	23	46
24	46	24	46	24	46
25	46	25	46	25	46
26	46	26	46	26	46
27	46	27	46	27	46
28	46	28	46	28	46
29	46	29	46	29	46
30	46	30	46	30	46

THIS WEEK	LAST WEEK	WKS. ON CHART	MAINSTREAM		DETECTIONS		
			TITLE/IMPRINT/PROMOTION LABEL	ARTIST	TW	LW	
			★★★★ NO. 1 ★★★★★				
1	2	13	TRULY MADLY DEEPLY COLUMBIA 1 week at No. 1	SAVAGE GARDEN	4673	4451	
2	1	17	TUBTHUMPING REPUBLIC/UNIVERSAL	CHUMBAWAMBA	4452	4855	
3	3	18	WALKIN' ON THE SUN INTERSCOPE	SMASH MOUTH	4222	4253	
4	9	5	MY HEART WILL GO ON 550 MUSIC	CELINE DION	4086	2810	
5	4	13	AS LONG AS YOU LOVE ME JIVE	BACKSTREET BOYS	4084	4026	
6	5	19	SHOW ME LOVE RCA	ROBYN	3722	3857	
7	7	15	YOU MAKE ME WANNA... LAFACE/ARISTA	USHER	3602	3548	
8	8	10	3 AM LAVA/ATLANTIC	MATCHBOX 20	3528	3387	
9	6	23	FLY LAVA/ATLANTIC	SUGAR RAY	3378	3796	
10	10	12	TOGETHER AGAIN VIRGIN	JANET	2810	2654	
11	12	13	I DO GEFFEN	LISA LOEB	2609	2575	
12	13	26	I DON'T WANT TO WAIT IMAGO/WARNER BROS.	PAULA COLE	2280	2493	
13	11	22	ALL CRIED OUT TRACK MASTERS/CRAVE	ALLURE FEATURING 112	2213	2610	
14	14	29	PUSH LAVA/ATLANTIC	MATCHBOX 20	2142	2237	
15	15	27	IF YOU COULD ONLY SEE POLYDOR/A&M	TONIC	2079	2137	
16	16	11	WHAT WOULD HAPPEN CAPITOL	MEREDITH BROOKS	2028	1963	
17	20	6	TIME OF YOUR LIFE (GOOD RIDDANCE) REPRISE	GREEN DAY	2009	1783	
			★★★★ AIRPOWER ★★★★★				
18	28	5	KISS THE RAIN UNIVERSAL	BILLIE MYERS	1904	1408	
19	21	7	BACK TO YOU A&M	BRYAN ADAMS	1824	1781	
20	19	17	LOVE YOU DOWN SO SO OEF/COLUMBIA	INOJ	1816	1810	
21	23	9	HOW'S IT GOING TO BE ELEKTRA/EEG	THIRD EYE BLIND	1776	1684	
22	24	9	HEAVEN REPRISE	NU FLAVOR	1620	1619	
23	18	25	HOW DO I LIVE CURB	LEANN RIMES	1578	1822	
			★★★★ AIRPOWER ★★★★★				
24	31	6	SWEET SURRENDER ARISTA	SARAH MCLACHLAN	1530	1363	
25	26	18	MO MONEY MO PROBLEMS BAD BOY/ARISTA THE NOTORIOUS B.I.G. (FEAT. PUFF DADDY & MASE)		1467	1461	
26	29	9	LIGHT IN YOUR EYES CAPITOL	BLESSID UNION	1452	1402	
27	30	7	PINK COLUMBIA	AEROSMITH	1418	1374	
28	27	10	MY LOVE IS THE SHHH! WARNER BROS. SOMETHIN' FOR THE PEOPLE FEATURING TRINA & TAMARA		1375	1444	
29	34	5	THE MUMMERS' DANCE QUINLAN ROAO/WARNER BROS.	LOREENA MCKENNITT	1366	1108	
30	33	5	GETTIN' JIGGY WIT IT COLUMBIA	WILL SMITH	1292	1181	
31	NEW		ARE YOU JIMMY RAY? EPIC	JIMMY RAY	1261	615	
32	NEW		I KNOW WHERE IT'S AT LONDON/ISLAND	ALL SAINTS	1225	715	
33	25	16	CRIMINAL CLEAN SLATE/WORK	FIONA APPLE	1137	1505	
34	37	8	32 FLAVORS ELEKTRA/EEG	ALANA DAVIS	1073	1026	
35	35	21	4 SEASONS OF LONELINESS MOTOWN	BOYZ II MEN	957	1100	
36	38	12	SOMETHING ABOUT THE WAY YOU LOOK TONIGHT ROCKET/A&M	ELTON JOHN	904	1010	
37	32	15	BREAKING ALL THE RULES GEFFEN	SHE MOVES	889	1200	
38	40	3	FEEL SO GOOD BAD BOY/ARISTA	MASE	884	886	
39	NEW		I WANT YOU BACK RCA	'N SYNC	828	363	
40	NEW		HAPPY UNIVERSAL	SISTER HAZEL	816	803	

THIS WEEK	LAST WEEK	WKS. ON CHART	RHYTHMIC TOP 40		DETECTIONS		
			TITLE/IMPRINT/PROMOTION LABEL	ARTIST	TW	LW	
			★★★★ NO. 1 ★★★★★				
1	1	9	ALL MY LIFE MCA 2 weeks at No. 1	K-CI & JOJO	1576	1493	
2	2	22	YOU MAKE ME WANNA... LAFACE/ARISTA	USHER	1348	1456	
3	4	12	I DON'T EVER WANT TO SEE YOU AGAIN STONECREEK/EPIC	UNCLE SAM	1259	1248	
4	7	6	NICE & SLOW LAFACE/ARISTA	USHER	1221	1053	
5	3	19	MY LOVE IS THE SHHH! WARNER BROS. SOMETHIN' FOR THE PEOPLE FEATURING TRINA & TAMARA		1099	1306	
6	5	14	MY BODY EASTWEST/EEG	LSG	1068	1161	
7	6	10	GETTIN' JIGGY WIT IT COLUMBIA	WILL SMITH	1063	1055	
8	9	15	TOGETHER AGAIN VIRGIN	JANET	947	882	
9	11	11	A SONG FOR MAMA MOTOWN	BOYZ II MEN	942	875	
10	8	14	SOCK IT 2 ME EASTWEST/EEG MISSY "MISDEMEANOR" ELLIOTT FEATURING DA BRAT		929	1016	
11	12	13	AS LONG AS YOU LOVE ME JIVE	BACKSTREET BOYS	819	820	
12	10	19	FEEL SO GOOD BAD BOY/ARISTA	MASE	816	879	
13	14	9	RAPPER'S DELIGHT PRIORITY ERICK SERMON, KEITH MURRAY & REDMAN		693	634	
14	13	19	SHOW ME LOVE RCA	ROBYN	664	761	
15	19	6	NO, NO, NO COLUMBIA	DESTINY'S CHILD	657	566	
			★★★★ AIRPOWER ★★★★★				
16	31	2	MY HEART WILL GO ON 550 MUSIC	CELINE DION	638	330	
17	16	37	MO MONEY MO PROBLEMS BAD BOY/ARISTA THE NOTORIOUS B.I.G. (FEAT. PUFF DADDY & MASE)		576	586	
			★★★★ AIRPOWER ★★★★★				
18	22	6	BEEN AROUND THE WORLD PUFF DADDY & THE FAMILY (FEAT. THE NOTORIOUS B.I.G. & MASE)		567	461	
19	17	23	ALL CRIED OUT TRACK MASTERS/CRAVE	ALLURE FEATURING 112	545	586	
20	15	7	TUBTHUMPING REPUBLIC/UNIVERSAL	CHUMBAWAMBA	535	617	
21	18	25	HEAVEN REPRISE	NU FLAVOR	532	585	
22	24	4	SWING MY WAY EASTWEST/EEG	K.P. & ENVYI	472	461	
23	39	3	BREAKDOWN COLUMBIA MARIAH CAREY (FEATURING BONE THUGS-N-HARMONY)		471	283	
24	27	7	ALL MY LOVE LIL' MAN/INTERSCOPE	QUEEN PEN	462	411	
25	20	18	FLY LAVA/ATLANTIC	SUGAR RAY	431	530	
26	21	12	ARE U STILL DOWN YAB YUM/550 MUSIC	JON B.	414	494	
27	23	4	LUV 2 LUV U BLACKGROUND/ATLANTIC	TIMBALAND AND MAGOO	394	461	
28	26	13	WHAT ABOUT US ARISTA	TOTAL	376	414	
29	29	12	HOW DO I LIVE CURB	LEANN RIMES	375	380	
30	36	3	GONE TILL NOVEMBER RUFFHOUSE/COLUMBIA	WYCLEF JEAN	333	294	
31	38	2	AIN'T THAT JUST THE WAY CRAVE	LUTRICIA MCNEAL	329	287	
32	28	5	SAY YOU'LL STAY TIOAL WAVE/GEFFEN	KAI	326	384	
33	NEW		WHAT YOU WANT BAD BOY/ARISTA MASE (FEATURING TOTAL)		321	263	
34	30	8	FATHER DEF JAM/MERCURY	LL COOL J	312	368	
35	NEW		I KNOW WHERE IT'S AT LONDON/ISLAND	ALL SAINTS	309	181	
36	25	22	4 SEASONS OF LONELINESS MOTOWN	BOYZ II MEN	300	452	
37	NEW		WE'RE NOT MAKING LOVE NO MORE LAFACE/ARISTA	DRU HILL	298	264	
38	32	18	PUT YOUR HANDS WHERE MY EYES COULD SEE ELEKTRA/EEG	BUSTA RHYMES	296	317	
39	40	16	NO TENGO DINERO FLEX/EMI/VIRGIN	LOS UMBRELLOS	294	273	
40	34	3	DANGEROUS ELEKTRA/EEG	BUSTA RHYMES	293	299	

Records showing an increase in detections over the previous week, regardless of chart movement. A record which has been on either chart for more than 20 weeks will not receive a bullet, even if it registers an increase in detections. Airpower awarded to those records which attain 1500 detections (mainstream) or 500 detections (rhythm) for the first time. If two records are tied in number of plays, the record being played on more stations is placed first. Records below the top 20 are removed from the chart after 26 weeks.

TONIC "OPEN UP YOUR EYES"

MODERN ROCK MONITOR (40) - (33)

EYE OPENERS

New ADULT MIXES at Radio NOW!!

WXRK/New York 16x
WBCN/Boston 19x

Q101/Chicago 26x
WPLY/Philly 25x

New video coming this MONTH!!

TF/ADULT TF ADD DATE: JANUARY 26, 27

From the PLATINUM (scanned) album LEMON PARADE



MUN RE
NUMBER ONE BANK DE REPAR

ON REVE
number ONE LE#1 38e

71
77
HAITI
17
97

12
10

POP 12/69
Vente pour 7695
Haiti
60 St. Domingue
20
60-70



The On tour now.
Rolling
Saint Stones
Of
Me

The new single from the platinum album
Bridges To Babylon

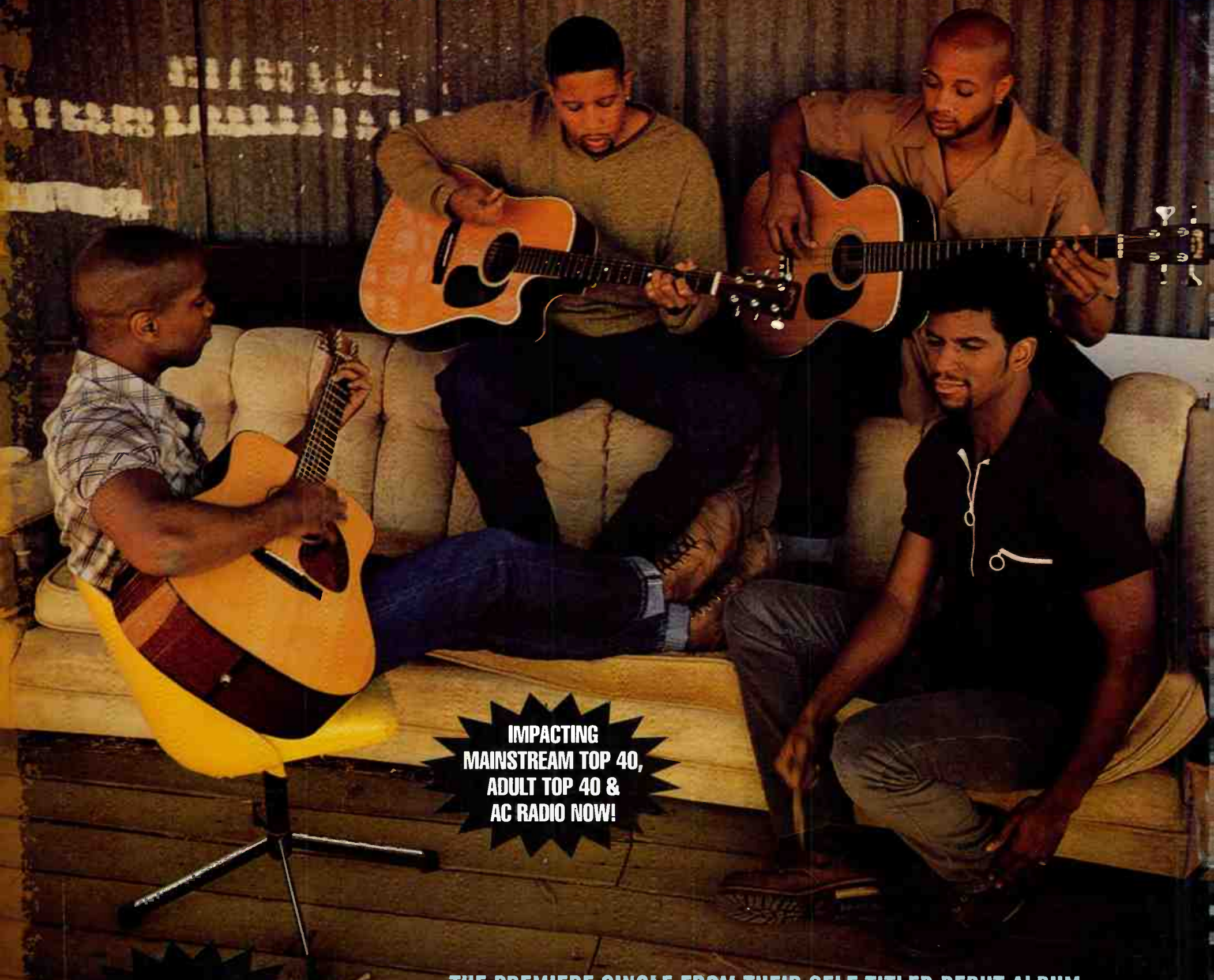
Produced by
The Dust Brothers and The Glimmer Twins
Executive Producers:
Don Was and The Glimmer Twins

©1998 Promotone B.V. issued under exclusive license to
Virgin Records America, Inc.
"Rolling Stones" and Tongue and Lip Design are
Trademarks of Musidor B.V.
AOL Keyword: Stones www.the-rolling-stones.com



DAKOTA MOON

A PROMISE I MAKE



**IMPACTING
MAINSTREAM TOP 40,
ADULT TOP 40 &
AC RADIO NOW!**

**ALREADY COMMITTED:
KISS 108 - BOSTON!**

THE PREMIERE SINGLE FROM THEIR SELF-TITLED DEBUT ALBUM

Produced by Mike More and Andrew Logan for 9 Grounds Productions, Inc.
Executive Producers: Mike More, Andrew Logan, Fred Goldring
Management: Aaron Walton for Aaron Walton Entertainment, Inc.
On Elektra compact discs and cassettes. www.elektra.com
www.dakotamoon.com

