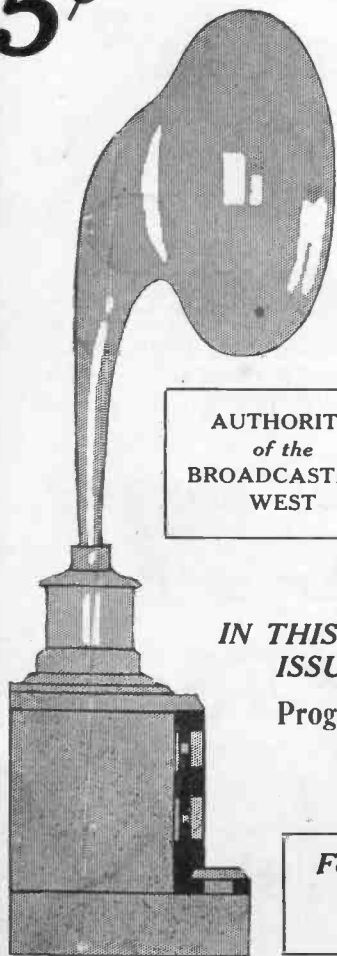


BROADCAST PROGRAM

5¢

for PACIFIC COAST



AUTHORITY
of the
BROADCASTING
WEST

IN THIS
ISSUE—

Programs KPO, KFI, KLX, KHJ, KFBK, KRE,
KZM, KGW, WBAP, WOC, WDAF, WHB

And all the worth while broadcast news



HERBERT E. METCALF—In private life Sales Manager of Magnavox Company, in the broadcasting world, official announcer at Station KPO. Mr. Metcalf is also one of our well known local radio engineers.

For week of—

April 29th to May 5th



Have You Given Your Crystal Buying Proper Attention?

A crystal that is easily damaged, quickly deteriorates with use, does not keep its sensitive contacts and requires constant attention during reception is not worth its price at any cost.

Radio-Argentite

has been produced with the idea of eliminating these faults, so that those desiring to receive local broadcasting with crystal sets can do so with assurance that they will not have to constantly "hunt" for a sensitive point.

A Valuable Asset to the New Reflex Circuit

Insist on Radio-Argentite

75c

At all dealers. Contained
in a sealed box with cat-
whisker and screw for
mounting.

75c

The H. Earle Wright Co.

914 S. Flower Street
LOS ANGELES, CAL.

DISTRIBUTORS

131-133 Eighth Street
SAN FRANCISCO, CAL.

The Home of "Radio Center"

BROADCAST PROGRAM

PUBLISHED WEEKLY BY

PACIFIC RADIO PUBLISHING CO., Inc.

Pacific Building, San Francisco

Telephone Douglas 136

Published Under the Auspices of PACIFIC RADIO TRADE ASSOCIATION

Vol. 1

San Francisco, April 28, 1923

No. 23

ALL BROADCAST WAVELENGTHS CHANGED

AT a recent meeting of the Central California broadcasters, Colonel J. F. Dillon, supervisor of radio for the Sixth District, announced that on and after May 15 new wavelength allocations would be used by the several stations as follows:

231 meters—A new station to be installed by Roberts Electric Company at Marysville, California.

234 meters—Herrold Laboratories, San Jose, California.

244 meters—Richmond Radio Company, Richmond, California.

252 meters—Herald, Modesto, California.

268 meters—Gould and Portable Wireless Telephone Company, Stockton.

278 meters—Hotel Claremont and Berkeley Gazette, Berkeley, California.

283 meters—Kimball-Upson, Sacramento, California.

360 meters—Examiner, San Francisco; Warner Brothers, Tribune and Hotel Oakland, Oakland, California.

423 meters—Hale Brothers, San Francisco, California.

509 meters—Mercantile Trust Company of California, San Francisco.

Wherever two or more stations use the same wavelength it will be necessary for them to divide the time. No immediate change is contemplated in time schedules except that the Hotel Claremont station will be on Monday, instead of Sunday night.

The following wavelengths have already been assigned to Southern California stations:

280 meters—Pasadena.

395 meters—Times, Los Angeles.

469 meters—Earle C. Anthony, Los Angeles.

535 meters—The new station now under construction at San Diego.

In view of the fact that the requirement of the Association of Authors and Composers requires a license to be held by each broadcaster using their copyrighted productions, the San Francisco Examiner has decided not to use musical programs. The other local broadcasters have not yet determined their course of action. The license fee runs as high as \$2000 a year.

Colonel Dillon also announced that the broadcasters would make no audible experiments or tests between the hours of 10:00 a. m. and 12:00 midnight. He emphasized the necessity for each station keeping accurately on its own wavelength.

N O W

IN OUR NEW LOCATION

1403 Bush Street

(Corner Polk and Bush, San Francisco)

*Every day in every way the world
is growing smaller and smaller
through radio*

*Every day in every way WE are
growing larger and larger through
radio*

We invite you to visit our new store and inspect our line of superior
radio equipment

ALL OF THE REAL GOOD RADIO
SETS ARE CARRIED IN STOCK

An Exclusive Radio Store

Miller-Taylor Radio Co.

C. E. MILLER

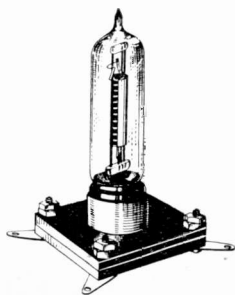
Phone Prospect 6575

H. M. TAYLOR



PEARL NOSSACK WHITCOMB

Mrs. Whitcomb will conduct the operetta "El Rancho Del Rey" over Radio Station KPO Saturday evening, May 5. The opera holds a particular interest for all Californians as the story is of early Spanish history. The scene is laid in San Mateo on the old Spanish grant, the Ranch of the King.



CANADIAN PEANUT TUBES

1½ Volt. Size 5⁄8 by 2½ inch

PRICE \$7.50

SOCKET, \$1.25

SUPPLY LIMITED

Orders Filled in Rotation

U. C. BATTERY & ELECTRIC CO.

2158 University Ave.

Berkeley, Cal.

Radio Trouble Doctor

Quick Repairs on Receiving Sets

Large or small sets, with tubes or crystals, repaired in your home or at my own shop, quickly and at very little cost. Fifteen years' experience in radio. Satisfactory work and helpful instruction guaranteed, efficiency increased. Receiving sets only.

H. S. LEWIS

PHONE MARKET 8298

1255 Market Street, SAN FRANCISCO

RADIO SUPPLIES

Sold here for less than elsewhere. Come in and get our prices
and convince yourself.

CLEVELAND RADIO SUPPLY

2306 BROADWAY

OAKLAND, CALIFORNIA

Broadcast Programs Free

Each \$10 Purchase, Six Months' Subscription

Every Complete Set, One Year's Subscription

Complete Radio Sets from \$10 to \$500

Built or installed—or let us show you how to build and install your own.

Bring or send your radio problems to us; no charge for this service.

Mail orders promptly attended to.

ELECTRIC MOTOR AND MACHINE COMPANY

Phone Douglas 1263

407-409 Stockton Street, San Francisco

RICHMOND RADIO SHOP

Sole Owner, FRANK T. DOEING

421 MacDonald Avenue, Richmond, California

SCHEDULES FOR SUNDAY, APRIL 29, 1923

7:00 to 7:30 a. m.—
 KUS—Los Angeles, City Dye Works
 WOC—Davenport, Palmer Sch. Chiropractic
 9:00 to 10:00 a. m.—
 KUO—San Francisco, Examiner
 WBAP—Fort Worth, Texas, Star-Telegram
 10:00 to 10:30 a. m.—
 KJS—Los Angeles, Bible Institute
 KHJ—Los Angeles, Times
 10:00 to 11:00 a. m.—
 KLX—Oakland, Tribune,
 KFBK—Sacramento, Kimball-Upson
 KFI—Los Angeles, Earle C. Anthony
 10:30 to 11:00 a. m.—
 KJO—Stockton, C. O. Gould
 WBAP—Fort Worth, Texas, Star-Telegram
 11:00 to 11:30 a. m.—
 KFI—Los Angeles, Earle C. Anthony
 11:00 a. m. to 12:00 m.—
 KPO—San Francisco, Hale Brothers
 KTW—Seattle, First Presbyterian Church
 11:30 a. m. to 12:00 m.—
 WOC—Davenport, Palmer Sch. Chiropractic
 12:00 m. to 12:30 p. m.—
 KPO—San Francisco, Hale Brothers
 12:00 m. to 1:00 p. m.—
 KLS—Oakland, Warner Brothers
 KJS—Los Angeles, Bible Institute
 WHB—Kansas City, Sweeny Auto School
 1:00 to 1:30 p. m.—
 KJS—Los Angeles, Bible Institute
 1:00 to 2:00 p. m.—
 KXD—Modesto, Herald
 2:00 to 3:00 p. m.—
 KWG—Stockton, Portable Wireless
 KUO—San Francisco, Examiner
 KGO—Altadena, Radio Laboratory
 WDAF—Kansas City, Star
 3:00 to 4:00 p. m.—
 KTW—Seattle, First Presbyterian Church
 KUO—San Francisco, Examiner
 KFHH—Santa Barbara, Fallon & Co.
 3:30 to 4:00 p. m.—
 KDYS—Great Falls, Montana, Tribune
 4:00 to 5:00 p. m.—
 KFI—Los Angeles, Earle C. Anthony
 KTW—Seattle, First Presbyterian Church
 WOC—Davenport, Palmer Sch. Chiropractic
 5:00 to 5:30 p. m.—
 KUO—San Francisco, Examiner
 WOC—Davenport, Palmer Sch. Chiropractic
 5:30 to 6:00 p. m.—
 WDAF—Kansas City, Star
 KMJ—Fresno, San Joaquin L. & P. Co.
 KRE—Berkeley, Maxwell Electric Co.
 WOC—Davenport, Palmer Sch. Chiropractic
 6:00 to 6:30 p. m.—
 KJS—Los Angeles, Bible Institute
 KNJ—Roswell, N. M., Public Service Co.
 6:00 to 7:00 p. m.—
 WDAF—Kansas City, Star
 WVX—Ft. Douglas, Utah, U. S. Government
 KSD—St. Louis, Post Dispatch
 KRE—Berkeley, Maxwell Electric Co.
 WOC—Davenport, Palmer Sch. Chiropractic
 WHB—Kansas City, Sweeny Auto School
 7:00 to 7:30 p. m.—
 KRE—Berkeley, Maxwell Electric Co.
 KFBC—San Diego, W. K. Azbill
 KFDB—San Francisco, Mercantile Trust Co.
 7:00 to 8:00 p. m.—
 WDAF—Kansas City, Star
 KSD—St. Louis, Post Dispatch
 WVX—Ft. Douglas, Utah, U. S. Government
 KLZ—Denver, Reynolds Radio Co.
 KGW—Portland, Oregonian

WHB—Kansas City, Sweeny Auto School
 7:30 to 8:00 p. m.—
 KTW—Seattle, First Presbyterian Church
 8:00 to 9:00 p. m.—
 WDAF—Kansas City, Star
 KSD—St. Louis, Post Dispatch
 KFBC—San Diego, W. K. Azbill
 KJS—Los Angeles, Bible Institute
 KFI—Los Angeles, Earle C. Anthony
 KTW—Seattle, First Presbyterian Church
 KFBK—Sacramento, Kimball-Upson
 KHJ—Los Angeles Times
 8:30 to 9:00 p. m.—
 KWH—Los Angeles, Examiner—
 CFCB—Vancouver, B. C., Marconi Co.
 9:00 to 9:30 p. m.—
 KWH—Los Angeles, Examiner—
 CFCB—Vancouver, B. C., Marconi Co.
 KTW—Seattle, First Presbyterian Church
 9:00 to 10:00 p. m.—
 WDAF—Kansas City, Star
 KSD—St. Louis, Post Dispatch
 KFBC—San Diego, W. K. Azbill
 KFI—Los Angeles, Earle C. Anthony
 KFBK—Sacramento, Kimball-Upson
 KHJ—Los Angeles Times
 10:00 to 11:00 p. m.—
 WDAF—Kansas City, Star
 KSD—St. Louis, Post Dispatch
 KFI—Los Angeles, Earle C. Anthony

For
Better Results
Use

EVEREADY

**“A” and “B”
BATTERIES**

with your
Radio Set

Manufactured on the Pacific Coast by

NATIONAL CARBON CO.
(INCORPORATED)

**599 Eighth Street
San Francisco, California**

A Truly Wonderful Radio Loud Speaker

The One You Will Eventually Buy

THE **TRUTONE** SENIOR
TRADE MARK

NO METALLIC VIBRATION



SWEET, MELLOW TONES
ARTISTIC QUALITY PRICE

A marvel of construction—beautiful crystalline enamel finish—NON-METALLIC HORN. A perfect TRUE TONE REPRODUCER.

This horn contains a built-in loud speaker of a newly improved type, with heavy mica diaphragm, which brings this loud speaker to a perfection without parallel in the radio field. For long distance work use the TRUTONE SR. with two stages and be satisfied.

The TRUTONE SR. marks a revolutionary change in the construction of radio amplifying horns. Manufactured from Seamless Non-metallic Composition and having a wooden tone chamber in the base, each tone coming from the TRUTONE horn is soft, true, clear and resonant and with a maximum volume of sound.

THE TONAL QUALITY IS TRUE.

The complete Loud Speaker stands thirty-two inches high; fourteen-inch Bell

Ask for a demonstration. Sold by all first-class radio dealers.

PRICE

\$25.00

Complete
with
6 Ft. Cord

SADLER MANUFACTURING CO.

86 Fourth Street, San Francisco, California

PROGRAMS FOR SUNDAY, APRIL 29, 1923

PROGRAM FOR KPO Hale Brothers Radio Station San Francisco, California

11:00 a. m. to 12:30 p. m.—
The Leighton Cafeteria Orchestra; George
Von Hagel, director.
Soloist, Miss Rita Mansfield, lyric soprano.
Morning (from "Peer Gynt").....Grieg
Orchestra
Selections from "Parsfal" (sacred music
drama Wagner
Orchestra
In Heavenly Love Abiding.....Lassen
Miss Rita Mansfield
Selection of Songs.....Schubert
Orchestra
The PenitentBeardsley van de Water
Miss Rita Mansfield
Kamennoi OstrowRubinstein
Ave MariaBach-Gounod
Orchestra

PROGRAM FOR KLX The Oakland Tribune Oakland, California

10:00 to 11:00 a. m.—
Vocal and instrumental
Polonaise Militaire
Rock of Ages
Souvenir
My Old Kentucky Home
In a Bird Store
Elegie
I Need Thee Every Hour
Roses of Picardy
Love, Here Is My Heart
Sherzo
Amor Mio
Bacio

PROGRAM FOR WBAP The Star-Telegram Fort Worth, Texas

9:00 to 10:15 a. m.—
Complete services of the First Methodist
Church. Rev. J. W. Bergin, pastor; Will
Foster, organist.
1:30 to 2:30 p. m.—
Concert.

PROGRAM FOR KFI

Earl C. Anthony, Los Angeles, Cal.
10:00 to 11:00 a. m.—
Full church services by all denominations
co-operating through Church Federation.
Rev. J. A. Steveson, executive secretary.
4:00 to 5:00 p. m.—
Full musical vesper service, under direction
of Mrs. William Mabree, national chairman
of church music, National Federation of
Music Clubs, 321 Van Ness avenue
Industrial choruses under direction Anton-
ette Ruth Sabel, director bureau of indus-
trial music, Chamber of Commerce.
8:00 to 9:00 p. m.—
Packard Girls Concert Club.
10:00 to 11:00 p. m.—
Theron Bennett and his Packard Six Or-
chestra every Sunday.

PROGRAM FOR KHJ Los Angeles Times Los Angeles, California

10:00 a. m.—
Sacred service.
8:00 p. m.—
De luxe program—vocal, instrumental music
and readings.

PROGRAM FOR KRE Berkeley Gazette—Maxwell Elec. Co. Berkeley, California

5:30 to 7:30 p. m.—
Mrs. Anna M. McIntyre, soprano; Mrs.
Floribelle Cleffins, second soprano; Mrs.
Ruth A. Hergert, first alto; Mrs. Bertha
Prentise, second alto; Mrs. R. Burke, accom-
panist.
Carmena, Waltz Song.
Rose of My Heart.
Kentucky Babe.
Sweetest Story Ever Told.
Also Spencer Rathberg's Orchestra in a
medley of poplar selections.

PROGRAM FOR KFBK Kimball-Upson Company Sacramento, California

10:00 to 11:00 a. m.—
Cruch services by all denominations
through co-operation with the Sacramento
Church Federation.



Rechargeable Radio "B" Batteries

24 Volt Special....\$ 8.40
24 Volt 10.75
48 Volt 20.50

"A" Batteries

40 Hour up....\$14.80 up

JULIUS BRUNTON & SONS CO
SAN FRANCISCO

GOTTSCHALK

LOUD SPEAKER



THE PRICE

\$22

Complete
with six-foot cord.

Dealers are invited
to write for territory
and trade prices.

THE GOTTSCHALK LOUD SPEAKER

"The Reproducer that has won a reputation"

Note These Features:

Powerful volume producing mica diaphragm.

Element applied with special attachment device to horn base.

Requires no battery. Plugs in like a head-set.

No delicate parts to wear or replace.

Super-sensitive on long distance signals. Non-metallic horn.

Note: Mica diaphragms are the recognized standard for musical reproduction by all phonograph manufacturers. Felt-padded base; it will handle the output of a radio set with ease.

RESULTS OBTAINED BY THE ABOVE DIAPHRAGM are—Volume plus resonance, tone sweet and clear, no rattle or squeaks.

**"THE MOST FOR THE MONEY
And An Honest Guarantee"**

IMPORTANT NOTICE: This truly marvelous Loud Speaker carries the fullest guarantee of the manufacturer. If it does not work better than any other loud speaker of equal price, return it to us and we will refund your money.

**DON'T FAIL TO ASK YOUR
DEALER TO DEMONSTRATE
THE GOTTSCHALK**

Gottschalk Electric & Mfg. Co.

992 Howard Street

SAN FRANCISCO

SCHEDULES FOR MONDAY, APRIL 30, 1923

7:00 to 7:30 a. m.—

KUS—Los Angeles, City Dye Works

9:00 to 10:00 a. m.—

KUO—San Francisco, Examiner

10:00 to 11:00 a. m.—

KFDB—San Francisco, Mercantile Trust Co.

WOC—Davenport, Palmer Sch. Chiopracitic

10:30 to 11:00 a. m.—

KDZE—Seattle, Rhodes Co.

WHB—Kansas City, Sweeny Auto School

11:00 to 11:30 a. m.—

KFDB—San Francisco, Mercantile Trust Co.

KUS—Los Angeles, City Dye Works

11:30 a. m. to 12:00 m.—

KLS—Oakland, Warner Brothers

KUS—Los Angeles, City Dye Works

12:00 m. to 1:00 p. m.—

WHB—Kansas City, Sweeny Auto School

12:30 p. m. to 1:00 p. m.—

KLS—Oakland, Warner Brothers

KHJ—Los Angeles, Times

1:00 to 1:30 p. m.—

KHJ—Los Angeles, Times

1:00 to 2:00 p. m.—

KQW—San Jose, Herrold Laboratories

WOC—Davenport, Palmer Sch. Chiopracitic

1:30 to 2:30 p. m.—

WDAF—Kansas City, Star

2:00 to 3:00 p. m.—

KUS—Los Angeles, City Dye Works

KFDB—San Francisco, Mercantile Trust Co.

KFAV—Venice, Cal., Abbott-Kinney

2:30 to 3:30 p. m.—

KUO—San Francisco, Examiner

KFHJ—Santa Barbara, Fallon & Co.

WMAQ—Chicago Daily News

3:00 to 4:00 p. m.—

KFBK—Sacramento, Kimball-Upson

KZN—Salt Lake City, Deseret News

3:30 to 4:00 p. m.—

KLX—Oakland, Tribune

KDZE—Seattle, Rhodes Co.

KGW—Portland, Oregonian

WOC—Davenport, Palmer Sch. Chiopracitic

4:00 to 4:30 p. m.—

KLX—Oakland, Tribune

KDZE—Seattle, Rhodes Co.

KFAW—Santa Ana, Radio Den

4:00 to 5:00 p. m.—

KWG—Stockton, Portable Wireless

KFEC—Portland, Meier & Frank

WDAF—Kansas City, Star

KDYX—Honolulu, Star-Bulletin

4:30 to 5:30 p. m.—

KPO—San Francisco, Hale Brothers

5:00 to 6:00 p. m.—

KJO—Stockton, C. O. Gould

GGG—Portland, Hallock & Watson

WWJ—Detroit, Evening News

WBAP—Fort Worth, Texas, Star-Telegram

KUO—San Francisco, Examiner

WOC—Davenport, Palmer Sch. Chiopracitic

KGU—Honolulu, The Advertiser

WHB—Kansas City, Sweeny Auto School

5:30 to 6:00 p. m.—

KFD—Seattle, Wash., V. I. Craft

KFAT—Eugene, Oregon, Pac. Radio Co.

6:00 to 6:30 p. m.—

KUO—San Francisco, Examiner

KSD—St. Louis, Post Dispatch

KWH—Los Angeles, Examiner

KGU—Honolulu, The Advertiser

6:00 to 7:00 p. m.—

KFRK—Sacramento, Kimball-Upson

KDYL—Salt Lake City, Telegram

WDAF—Kansas City, Star

KSD—St. Louis, Post Dispatch

WWJ—Detroit, Evening News

KMO—Tacoma, Wash., Love Electric Co.

WOC—Davenport, Palmer Sch. Chiopracitic

6:30 to 7:00 p. m.—

KXD—Modesto, Herald

KFEC—Portland, Meier & Frank

KZM—Oakland, Hotel Oakland

KFI—Los Angeles, Earle C. Anthony

KFFA—San Diego, R. O. Sheldon

KFAW—Santa Ana, Radio Den

WFAA—Dallas, News

7:00 to 7:30 p. m.—

KLX—Oakland, Tribune

KFI—Los Angeles, Earle C. Anthony

WWJ—Detroit, Evening News

KGW—Portland, Oregonian

GGG—Portland, Hallock & Watson

KHJ—Los Angeles, Times

KDPT—San Diego, Southern Electric Co.

KFHJ—Santa Barbara, Fallon & Co.

KFAW—Santa Ana, Radio Den

KZN—Salt Lake City, Deseret News

WFAA—Dallas, News

WDAF—Kansas City, Star

KSD—St. Louis, Post Dispatch

WOC—Davenport, Palmer Sch. Chiopracitic

7:30 to 8:00 p. m.—

KZN—Salt Lake City, Deseret News

GGG—Portland, Hallock & Watson

KJR—Seattle, Wash., V. I. Craft

KDYS—Great Falls, Montana, Tribune

KFAE—Denver, Western Radio Co.

WOC—Davenport, Palmer Sch. Chiopracitic

KFAE—Pullman, Wash., State College

WBAP—Fort Worth, Texas, Star-Telegram

8:00 to 8:30 p. m.—

KZN—Salt Lake City, Deseret News

KJR—Seattle, Wash., V. I. Craft

KFAE—Pullman, Wash., State College

WBAP—Fort Worth, Texas, Star-Telegram

8:00 to 9:00 p. m.—

KXD—Modesto, Herald

KFDB—San Francisco, Mercantile Trust Co.

KDYM—San Diego, Savoy Theatre

KHJ—Los Angeles, Times

KFI—Los Angeles, Earle C. Anthony

CFCB—Vancouver, B. C., Marconi Co.

KGW—Portland, Oregonian

KDYS—Great Falls, Montana, Tribune

KSD—St. Louis, Post Dispatch

KFAT—Eugene, Oregon, Pac. Radio Co.

8:30 to 9:00 p. m.—

KDZE—Seattle, Rhodes Co.

KFAW—Santa Ana, Radio Den

9:00 to 9:30 p. m.—

KFAW—Santa Ana, Radio Den

CFCB—Vancouver, B. C., Marconi Co.

9:00 to 10:00 p. m.—

KFDB—San Francisco, Mercantile Trust Co.

KJO—Stockton, C. O. Gould

KFI—Los Angeles, Earle C. Anthony

KDYM—San Diego, Savoy Theatre

KDZE—Seattle, Rhodes Co.

KSD—St. Louis, Post Dispatch

KWH—Los Angeles, Examiner

KGW—Portland, Northwest Radio Co.

KFHJ—Santa Barbara, Fallon & Co.

KHJ—Los Angeles, Times

KDYX—Honolulu, Star-Bulletin

10:00 to 11:00 p. m.—

KFI—Los Angeles, Earle C. Anthony

WDAF—Kansas City, Star

KGU—Honolulu, The Advertiser

11:00 p. m. to 12:00 midnight—

KGW—Portland, Oregonian

If you cannot call in person Order by Mail from the largest radio supply house in the West!

Batteries	Our Special
1½ volt Peanut Dry Cells.....	\$ 0.45
Eveready 43 volt, tapped.....	3.75
Eveready 22½ volt, tapped.....	2.50
Eveready 22½ volt small, no taps....	1.90
Edison Radio A Batteries, 150 am- pere size, 6 volt.....	25.00

Binding Posts	
Phone type, ea.....	\$ 0.03
Bakelite Top Posts, ea.....	.05
Switch Contacts, doz.....	.25

Condensers	
3 Plate Variable Vernier.....	\$ 1.50
43 Plate Acme Variable Condensers	1.50
43 Plate Signal Condensers, cap. .001	3.35
23 Plate Vernier Variable Condensers	3.00
34 Plate Dayton Variable Condenser, capacity .001.....	3.30
11 Plate Signal.....	2.00
63 Plate Var. Condensers, cap. .0015	3.25
43 Plate Variable Condensers, Bake- lite ends, cap. .001.....	2.25
Crosley Variable, cap. .001.....	1.50
Flewelling Condenser Banks.....	.95

Dials	
Electro 3-in. dia., 3/16 and ¼ shaft.....	\$ 0.50
Nickel Dials, 3-in. dia.....	.50
2-in. Moulded Rheostat Dials.....	.40
Moulded Bakelite, 3-in. Dials.....	.65

Headsets	
Manhattan, 2,000 ohm.....	\$ 4.75
Manhattan, 3,000 ohm.....	5.75
Federal Headsets.....	5.75
Phone Cords—double.....	.75
Phone Cords—single.....	.45
Dictograph.....	7.00
Kellogg.....	6.50

Jacks	
Federal—1421, open circuit.....	\$ 0.60
Federal—1422, single circuit.....	.60
Federal—1423, double circuit.....	.85
Federal—1435, automatic.....	.75
Filament Control Coryjacks, open cir- cuit.....	.45
Filament Control Coryjacks, double circuit.....	.50
Lightning Arresters.....	.90

Phone Plugs	
Pilot Plug.....	\$ 0.65
Cory plugs.....	.80

A. F. Amplifying Transformers	
Thorlanson Amp. Transformers.....	\$ 2.50
General Radio Amp. Transformers.....	4.25
Acme Amp. Transformers.....	4.25
All American—3 to 1 ratio.....	4.25
5 to 1 ratio.....	4.75
10 to 1 ratio.....	4.75

Radio Frequency Transformers	
Radio Corporation UV 1714.....	\$ 6.50
Erla Transformers, 1st, 2nd & 3rd.....	4.00

In order to
introduce
our service
to the
thousands of
radio fans
we offer you
these
supplies
at unusually
attractive
prices.

▲ ▲

We guarantee
mail
deliveries
on same day
that your
orders are
received.

Rheostats	Our Special
Paragon Rheostats.....	\$ 0.90
Framingham Vernier Rheostats.....	1.25
Framingham Rheostats.....	.65
Cutler Hammer Rheostats—Vernier....	1.25
Framingham Potentiometers.....	1.25
Special Fil. Rheostats.....	.25

Switches	
I. C. Bearing Switches, 1½-in. & 1-in. radius.....	\$ 0.40
Republic 1-in. & 1½-in. radius.....	.25
Remler Switches, 1-in. radius.....	.40
S. P. D. T. Aerial Switches.....	1.75
Series Parallel Switches.....	.50

Tube Sockets	
Peanut Tube Sockets—Wilmaco.....	\$ 0.50
Peanut Tube Sockets—Naalil.....	.60
Peanut Tube Adapters.....	.65
Peanut Tube Sockets—General Radio.....	.65
V. T. Sockets, Kellogg, Bakelite.....	.60
V. T. Sockets, Gen. Radio.....	1.10
V. T. Sockets, Signal.....	.95
V. T. Sockets, Crosley.....	.30

Variometers	
Moulded Variometers, Columbia.....	\$ 4.90
Moulded Variometers, Remler.....	6.25

Variocouplers	
Remler Variocouplers.....	\$ 4.85
Columbia Variocouplers.....	4.25
Long Distance Coils (bank wound).....	6.50
(All Wave Couplers 150 to 2600 Meters)	

Vacuum Tubes	
Radiotron Detector UV 200.....	\$ 4.40
Radiotron Amplifier UV 201.....	5.75
Cunningham Amplifier C-301.....	5.75
Cunningham Detector C-300.....	4.40

Spaghetti	
3-ft. lengths Spaghetti, fits No. 14 wire, length.....	\$ 0.25
Solderet Soldering Irons.....	1.35
Skinderviken Buttons.....	.95
Antennae Wire, 14 gauge copper, per C.....	.40
Flewelling Circuit Diagrams sent on request. (Send Stamp.)	

Hydrometers.....	.75
Eureka Clips, ea.....	.08
General Elect. Crystal Sets.....	13.00
Peanut Tube Detector Panels.....	4.50
Series Parallel Switches.....	.50
Loose Couplers, Signal, Type R-24.....	4.80
Loose Couplers, Signal, Type R-23.....	6.75
Loose Couplers, Signal, Type R-22.....	8.55
Tuning Coils, Signal, Type R-27.....	4.25
Remler Sliders, ¼-in.....	.20

SPECIAL—Wilmaco Long Distance	
Midget Set.....	25.00
Good for One Thousand Miles— 150 to 800 Meters Wave Length.	

THREE
STORES

WARNER BROS.

THREE
STORES

350 Market Street San Francisco 428 Market Street
Oakland—Twenty-second and Telegraph Avenue

If you are unable to call for a copy of our big radio bulletin, be sure to send for your copy.
Write to any of our three stores.

PROGRAMS FOR MONDAY, APRIL 30, 1923

PROGRAM FOR KHJ Los Angeles Times Los Angeles, California

12:30 to 1:15 p. m.—
News items and. Music.
6:45 to 7:30 p. m.—
Children's hour. Music and bedtime story by
"Uncle John."
8:00 to 10:00 p. m.—
El Monte Chamber of Commerce presents
program of vocal and instrumental music
and readings.

PROGRAM FOR WBAP The Star-Telegram Fort Worth, Texas

5:15 to 6:00 p. m.—
Sin Fein Syncopators Orchestra. (Y. M. C.
announcer.)
7:30 to 8:30 p. m.—
Concert by orchestra of Hubbard, Texas.
(G. C. A. announcer.)

PROGRAM FOR WOC The Palmer School of Chiropractic, Davenport, Iowa

10:00 a. m.—
Chimes concert
12:00 m.—
Closing stocks and markets
1:30 p. m.—
Educational talk by C. A. Russell
3:45 p. m.—
Chimes concert
4:35 p. m.—
Sandman's visit
5:00 p. m.—
Artist musical program. Edwin Swindell,
musical director. Program furnished by
Art Young's Ohio Orchestra of Cleveland, O.
6:00 p. m.—
Educational Lecture: "Your Servants, the
Utilities," by Joe Carmichael, director of
Iowa Committee on Public Utility Infor-
mation.
6:30 p. m.—
Educational Lecture: "The Tri-Cities of
the U. S. A.," by E. E. Buffum, a Rock Is-
land newspaper man.

PROGRAM FOR KLX The Oakland Tribune Oakland, California

3:30 to 4:30 p. m.—
Music
7:00 to 7:30 p. m.—
Code Practice.

PROGRAM FOR KFBK Kimball-Upson Company Sacramento, California

3:00 to 4:00 p. m.—
Selected organ numbers from the T. & D.
Theatre. Educational features.
6:00 to 6:45 p. m.—
Educational features; United States Govern-
ment agricultural bulletins; weather fore-
cast; code practice; baseball scores.

PROGRAM FOR KFAE State College, Pullman, Washington

7:30 to 8:30 p. m.—
"The Future of Russia," by Prof. C. H.
Woody.
"The Fireless Cooker," by M. Minerva Law-
rence.
Poultry Pointers
Music

PROGRAM FOR WHB Sweeny Auto & Electrical School Kansas City, Missouri

10:30 to 11:00 a. m.—
Popular musical concert.
12:00 m. to 1:00 p. m.—
Ladies' hour program of classical music.
5:00 to 5:30 p. m.—
Children's program. Bedtime stories, etc.

PROGRAM FOR WDAF Kansas City Star

1:30 to 2:30 p. m.—
Concert.
4:00 to 5:00 p. m.—
Educational features and musical program.
6:00 to 7:30 p. m.—
Concert.
9:45 to 11:00 p. m.—
Nighthawk Frolic, Coon-Sanders Orchestra.

PROGRAM FOR KZM Hotel Oakland Oakland, California

6:45 to 7:00 p. m.—
News bulletins furnished by the Oakland
Tribune, and final ball scores.

PROGRAM FOR KFI Earle C. Anthony, Inc. Los Angeles, California

6:45 to 7:30 p. m.—
Peter Rabbit and His Friends.
Los Angeles Chamber of Commerce; M. M.
Rathbun, publicity director.
Junior Music Clubs of Southern California;
Mrs. Ella W. Duffield, associate chairman,
1015 South Manhattan.
10:00 to 11:00 p. m.—
Hollywood Chamber of Commerce; Mrs. J.
J. Carter, chairman program committee,
1801 LaBrea

PROGRAM FOR KGW The Morning Oregonian Portland, Oregon

3:30 to 4:00 p. m.—
Woman's program
7:00 to 7:30 p. m.—
Oregon Agricultural College Extension
Course lecture.
8:00 to 9:00 p. m.—
Concert
11:00 to 12:00 p. m.—
Regular semi-weekly meeting of the Hoot
Owls.

???? Questions and Answers ???? ?

Editor's Note: The publishers of Broadcast Program have been in receipt of many questions to be answered in this little magazine. Space prohibits us from publishing all of them. We will, hereafter, select a half dozen of the most timely questions and answer them in these pages. Other questions will be answered by mail, free of charge. You need not be a subscriber to take advantage of this service.

Question: I have a Westinghouse Aeriola that I use for local broadcasting. This set works all right on the low wave binding post but the 400-meter stations do not come in at all. When I put the aerial on the high wave post I can not get any signals. Where is my trouble?—Lathrop Herold, San Jose.

Answer: Surely you must have a broken or shorted connection somewhere. We would advise you to take it to an RC dealer and have him repair it for you. The trouble will be of a minor nature only and you can probably remedy it yourself if you carefully go over all connections, etc.

Question: In a previous issue of Broadcast Program, in an article on "How to Plan Your Set," the writer states that a cardboard salt box can be used for making a loose coupler. What can I do to reinforce the paper tube so that it will be firm enough to take the winding?—S. C., Piedmont.

Answer: Bake the tube in a good insulating varnish and allow it to dry well. This will strengthen the tube considerably as well as increasing its insulating properties. A few good coats of insulating varnish applied with a brush will be a good substitute for a baked varnish.

Herrold Laboratories, San Jose

ANNOUNCE THE OPENING OF

Their New Store, 113 East Santa Clara Street

The Largest Radio Store, with the Best Radio Stock, West of Chicago

WRITE—PHONE—WIRE

TWO STORES:

113 East Santa Clara Street

SAN JOSE, CAL.

467 South First Street

KENNEDY EQUIPMENT KENNEDY-SELECTIVITY

Ease of control, long distance reception, elimination of interference and the utmost pleasure and satisfaction in its use are assured with a KENNEDY receiver

*Arrange with your dealer for a demonstration.
Or write us direct for further information.*

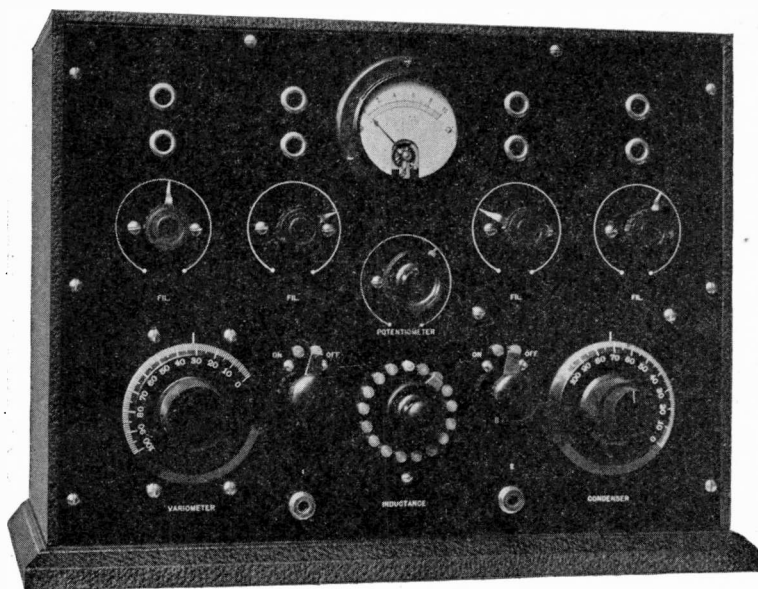
THE COLIN B. KENNEDY COMPANY, 159 New Montgomery St., SAN FRANCISCO

SCHEDULES FOR TUESDAY, MAY 1, 1923

- 7:00 to 7:30 a. m.—
 KUS—Los Angeles, City Dye Works
 9:00 to 10:00 a. m.—
 KUO—San Francisco, Examiner
 10:00 to 11:00 a. m.—
 KFDB—San Francisco, Mercantile Trust Co.
 10:30 to 11:00 a. m.—
 KDZE—Seattle, Rhodes Co.
 WHB—Kansas City, Sweeny Auto School
 11:00 to 11:30 a. m.—
 KFDB—San Francisco, Mercantile Trust Co.
 KFAV—Venice, Cal., Abbott-Kinney
 11:30 a. m. to 12:00 m.—
 KFAV—Venice, Cal., Abbott-Kinney
 KLS—Oakland, Warner Brothers
 KGW—Portland, Oregonian
 12:00 m. to 12:30 p. m.—
 KUS—Los Angeles, City Dye Works
 12:00 m. to 1:00 p. m.—
 KLS—Oakland, Warner Brothers
 WHB—Kansas City, Sweeny Auto School
 12:30 p. m. to 1:00 p. m.—
 KHJ—Los Angeles Times
 1:00 to 1:30 p. m.—
 KWH—Los Angeles, Examiner—
 1:00 to 2:00 p. m.—
 KQW—San Jose, Herrold Laboratories
 WBAP—Forth Worth, Tex., Star-Telegram
 WOC—Davenport, Palmer Sch. Chiropractic
 1:00 to 2:00 p. m.—
 WDAF—Kansas City, Star
 1:30 to 2:30 p. m.—
 WDAF—Kansas City, Star
 2:00 to 3:00 p. m.—
 KFDB—San Francisco, Mercantile Trust Co.
 2:30 to 3:30 p. m.—
 KUO—San Francisco, Examiner
 KFIIJ—Santa Barbara, Fallon & Co.
 WMAQ—Chicago Daily News
 3:00 to 4:00 p. m.—
 KFBK—Sacramento, Kimball-Upson
 KZN—Salt Lake City, Deseret News
 3:30 to 4:00 p. m.—
 KLX—Oakland, Tribune
 KDZE—Seattle, Rhodes Co.
 KGW—Portland, Oregonian
 WOC—Davenport, Palmer Sch. Chiropractic
 4:00 to 4:30 p. m.—
 KLX—Oakland, Tribune
 KDZE—Seattle, Rhodes Co.
 KFAW—Santa Ana, Radio Den
 KUS—Los Angeles, City Dye Works
 4:00 to 5:00 p. m.—
 KWG—Stockton, Portable Wireless
 KFCB—Portland, Meier & Frank
 WDAF—Kansas City, Star
 KDYX—Honolulu, Star-Bulletin
 WDAF—Kansas City, Star
 4:30 to 5:30 p. m.—
 KPO—San Francisco, Hale Brothers
 5:00 to 6:00 p. m.—
 KGG—Portland, Hallock & Watson
 KWH—Los Angeles, Examiner—
 WWJ—Detroit, Evening News
 KJR—Seattle, Wash., V. I. Craft
 KJQ—Stockton, C. O. Gould
 KUO—San Francisco, Examiner
 KSD—St. Louis, Post Dispatch
 WMAQ—Chicago Daily News
 KGU—Honolulu, The Advertiser
 WHB—Kansas City, Sweeny Auto School
 WBAP—Forth Worth, Texas, Star-Telegram
 5:30 to 6:00 p. m.—
 KFAT—Eugene, Oregon, Pac. Radio Co.
 6:00 to 6:30 p. m.—
 KFBK—Sacramento, Kimball-Upson
 KQY—Portland, Stubbs Electric Co.
 KMO—Tacoma, Wash., Love Electric Co.
 KGU—Honolulu, The Advertiser
 6:00 to 7:00 p. m.—
 KUO—San Francisco, Examiner
 KDYL—Salt Lake City, Telegram
 KUS—Los Angeles, City Dye Works
 WFAA—Dallas, News
 WWJ—Detroit, Evening News
 WDAF—Kansas City, Star
 WHB—Kansas City, Sweeny Auto School
 6:30 to 7:00 p. m.—
 KXD—Modesto, Herald
 KZM—Oakland, Hotel Oakland
 KFAV—Venice, Cal., Abbott-Kinney
 KFI—Los Angeles, Earle C. Anthony
 WFAA—Dallas, News
 7:00 to 7:30 p. m.—
 KFAV—Venice, Cal., Abbott-Kinney
 KFI—Los Angeles, Earle C. Anthony
 WWJ—Detroit, Evening News
 KLX—Oakland, Tribune
 KHJ—Los Angeles, Times
 KDPT—San Diego, Southern Electric Co.
 WFAA—Dallas, News
 KFHIJ—Santa Barbara, Fallon & Co.
 7:00 to 8:00 p. m.—
 KZN—Salt Lake City, Deseret News
 KFAF—Denver, Western Radio Co.
 KSD—St. Louis, Post Dispatch
 WMAQ—Chicago Daily News
 WHB—Kansas City, Sweeny Auto School
 7:30 to 8:00 p. m.—
 KGG—Portland, Hallock & Watson
 WBAP—Forth Worth, Texas, Star-Telegram
 KHQ—Seattle, Washington, L. Wasmer
 KGW—Portland, Oregonian
 WBAP—Forth Worth, Texas, Star-Telegram
 8:00 to 8:30 p. m.—
 KZN—Salt Lake City, Deseret News
 KHQ—Seattle, Washington, L. Wasmer
 WBAP—Forth Worth, Texas, Star-Telegram
 8:00 to 9:00 p. m.—
 KPO—San Francisco, Hale Brothers
 KDPT—San Diego, Southern Electric Co.
 KFI—Los Angeles, Earle C. Anthony
 KWG—Stockton, Portable Wireless
 KLX—Oakland, Tribune
 KMJ—Fresno, San Joaquin L. & P. Co.
 KSD—St. Louis, Post Dispatch
 KHJ—Los Angeles Times
 8:30 to 9:00 p. m.—
 KJR—Seattle, Wash., V. I. Craft
 KWH—Los Angeles, Examiner—
 CFCB—Vancouver, B. C., Marconi Co.
 9:00 to 9:30 p. m.—
 KJR—Seattle, Wash., V. I. Craft
 CFCB—Vancouver, B. C., Marconi Co.
 9:00 to 10:00 p. m.—
 KFI—Los Angeles, Earle C. Anthony
 KPO—San Francisco, Hale Brothers
 WDAF—Chicago, Drake Hotel
 KWH—Los Angeles, Examiner—
 KDPT—San Diego, Southern Electric Co.
 WFAA—Dallas, News
 KSD—St. Louis, Post Dispatch
 KHJ—Los Angeles, Times
 KFHIJ—Santa Barbara, Fallon & Co.
 KDYX—Honolulu, Star-Bulletin
 9:30 to 10:00 p. m.—
 KYG—Portland, Radio Service Bureau
 10:00 to 11:00 p. m.—
 KFI—Los Angeles, Earle C. Anthony
 WDAF—Chicago, Drake Hotel
 KGU—Honolulu, The Advertiser
 WDAF—Kansas City, Star

AT LAST—

THE COMBINATION YOU HAVE BEEN LOOKING FOR



One step Radio Frequency, Detector, and two step Audio Frequency.

All mounted in an elegant leatherette finished cabinet (kodak finish).

In this instrument is produced the highest degree of selectivity and radio frequency amplification, thereby bringing in the most distant stations clearly and with ample volume.

Let us convince you. Arrange for a demonstration in your own home.

SOLE DISTRIBUTORS

Lee Electric Shop

1138 Sutter St.

(Between Polk and Larkin Sts)

San Francisco

Phone Prospect 5778

PROGRAMS FOR TUESDAY, MAY 1, 1923

PROGRAM FOR KPO

Hale Brothers Radio Station
San Francisco, California

8:00 to 10:00 p. m.

Frances Wright Woodbridge, lyric soprano;
Adelaide Paxton, violinist; Walter Frank
Wenzel, pianist.

Air de Beatrix (from "Etienne Marcel")

.....St. Saens

A Lonely Maiden Roaming.....Branscombe

Unto Thy Heart (with violin obligato)

.....Allitsen

Soaring Schumann

Why? Schumann

Melody, E. Flat.....Rubinstein

Walter Frank Wenzel

Introduction and Rondo Capriccioso....

.....St. Saens

Accompanied by Henriette Lichtenstein

The Danza Chadwick

The Zephyr (Mexican Folk Song).....

My Love Is a Muleteer.....Di Noguero

Frances Wright Woodbridge, soprano

Arabesque No. 2.....Debussy

Gayotte Sgambati

Polichinelle Rochmanineff

Walter Frank Wenzel

Chanson Arabe Kreisler

La Gitana Kreisler

Adelaide Paxton

The San' Man's Song.....McKinney

The Night Wind.....Farley

Elf and Fairy.....Densmore

Frances Wright Woodbridge

PROGRAM FOR KGW

The Morning Oregonian
Portland, Oregon

11:30 a. m.—

United States Weather forecast (485 meters)

3:30 to 4:00 p. m.—

Woman's Program for child training.

7:30 p. m.—

United States Weather forecast (485 meters)

PROGRAM FOR KFBK

Kimball-Upson Company
Sacramento, California

3:00 to 4:00 p. m.—

Selected organ numbers from the T. & D.

Theatre. Educational features.

6:00 to 6:45 p. m.—

Educational features; auto and outing in-
formation; weather forecast; code practice;
baseball scores.

PROGRAM FOR WHB

Sweeny Auto & Electrical School
Kansas City, Missouri

10:30 to 11:00 a. m.—

Popular musical concert.

12:00 m. to 1:00 p. m.—

Ladies' hour program of classical music.

5:00 to 5:30 p. m.—

Children's program. Bedtime stories, etc.

6:00 to 8:00 p. m.—

Regular evening concert.

PROGRAM FOR WDAF

Kansas City Star

1:30 to 2:30 p. m.—

Concert.

4:00 to 5:00 p. m.—

Educational features and musical program.

6:00 to 7:30 p. m.—

Concert.

9:45 to 11:00 p. m.—

Nighthawk Frolic, Coon-Sanders Orchestra.

PROGRAM FOR KHJ

Los Angeles Times
Los Angeles, California

12:30 to 1:15 p. m.—

News Items. Music.

6:45 to 7:30 p. m.—

Children's Hour.

Music and bedtime story by "Uncle John."

8:00 to 10:00 p. m.—

"May Day" party given by "Uncle John to
juvenile entertainers who have appeared
at KHJ.

PROGRAM FOR WBAP

The Star-Telegram
Fort Worth, Texas

5:00 to 6:00 p. m.—

Concert by Mrs. Pearl Calhoon Davis, so-
prano; and E. Clyde Whitlock, violinist.
(Y. M. C. announcer.)

7:30 to 8:30 p. m.—

Concert by the Gainesville, Texas, orches-
tra, under the auspices of the Chamber of
Commerce; C. C. Shell, director. (Y. M. C.
announcer.)

PROGRAM FOR WOC

The Palmer School of Chiropractic,
Davenport, Iowa

8:55 a. m.—

Time signals (485 meters).

10:00 a. m.—

Chimes concert

12:00 m.—

Closing stocks and markets.

1:30 p. m.—

Educational talk by F. C. Walker.

3:45 p. m.—

Chimes concert.
(No broadcasting on Tuesday evening by
agreement of Tri-City Stations.)

PROGRAM FOR KLX

The Oakland Tribune
Oakland, California

3:30 to 5:15 p. m.—

Baseball scores.

7:00 to 7:30 p. m.—

Tribune news bulletins and music.

8:00 to 8:30 p. m.—

Piano concert by Elsa Phennig Kaulbar-
ska Musgrave, the internationally famous
Polish concert pianist.

8:30 to 9:00 p. m.—

Vocal concert by J. E. Deegan, baritone
tenor of Portland, Oregon; accompanied at
the piano by Mrs. Deegan:

Your SmileFoster

I Miss You So.....Beaumont

Keep on Hopin'.....Maxwell

Resignation.....Baro Roma (Oakland composer)

Tommy, LadMargetson

PROGRAM FOR KFI

Earle C. Anthony, Inc.
Los Angeles, California

6:45 to 7:30 p. m.—

Peter Rabbit and His Friends.

Los Angeles County Medical Society; Dr.
William Duffield, sponsor, Auditorium
Building

Juener Music Clubs.

8:00 to 9:00 p. m.—

Eagan School.

10:00 to 11:00 p. m.—

Hollywood Opera Reading Club; Mrs. Loren
B. Curtis, president, 1622 Vista; Dr. Frank
Nagel, lecturer, 1141 El Centro.

SCHEDULES FOR WEDNESDAY, MAY 2, 1923

- 7:00 to 7:30 a. m.—
KUS—Los Angeles, City Dye Works
- 9:00 to 10:00 a. m.—
KUO—San Francisco, Examiner
- 10:00 to 11:00 a. m.—
KFDB—San Francisco, Mercantile Trust Co.
WOC—Davenport, Palmer Sch. Chiropractic
- 10:30 to 11:00 a. m.—
KDZE—Seattle, Rhodes Co.
WFAA—Dallas, News
WHB—Kansas City, Sweeny Auto School.
- 11:00 to 11:30 a. m.—
KFDB—San Francisco, Mercantile Trust Co.
- 11:30 a. m. to 12:00 m.—
KLS—Oakland, Warner Brothers
- 12:00 m. to 12:30 p. m.—
KUS—Los Angeles, City Dye Works
- 12:30 p. m. to 1:00 p. m.—
KHJ—Los Angeles Times
- 12:00 m. to 1:00 p. m.—
KLS—Oakland, Warner Brothers
WHB—Kansas City, Sweeny Auto School.
- 1:00 to 1:30 p. m.—
KWH—Los Angeles, Examiner—
- 1:00 to 2:00 p. m.—
KQW—San Jose, Herrold Laboratories
WRAP—Forth Worth, Tex., Star-Telegram
WOC—Davenport, Palmer Sch. Chiropractic
- 2:00 to 3:00 p. m.—
KFDB—San Francisco, Mercantile Trust Co.
KFAV—Venice, Cal., Abbott-Kinney
- 2:30 to 3:30 p. m.—
KUO—San Francisco, Examiner
WMAQ—Chicago Daily News
KFHJ—Santa Barbara, Fallon & Co.
- 3:00 to 4:00 p. m.—
KFBK—Sacramento, Kimball-Upson
KDZE—Seattle, Rhodes Co.
KZN—Salt Lake City, Deseret News
- 3:30 to 4:00 p. m.—
KLX—Oakland, Tribune,
KGW—Portland, Oregonian
- 4:00 to 4:30 p. m.—
KDZE—Seattle, Rhodes Co.
KFAV—Santa Ana, Radio Den
KLX—Oakland, Tribune,
- 4:00 to 5:00 p. m.—
KWG—Stockton, Portable Wireless
KFEC—Portland, Meier & Frank
WOC—Davenport, Palmer Sch. Chiropractic
KDYX—Honolulu, Star-Bulletin
- 4:30 to 5:30 p. m.—
KPO—San Francisco, Hale Brothers
- 5:00 to 6:00 p. m.—
KJQ—Stockton, C. O. Gould
KGG—Portland, Hallock & Watson
KUO—San Francisco, Examiner
WOC—Davenport, Palmer Sch. Chiropractic
WMAQ—Chicago Daily News
KGU—Honolulu, The Advertiser
WRAP—Forth Worth, Tex., Star-Telegram
WHB—Kansas City, Sweeny Auto School.
- 5:30 to 6:00 p. m.—
WDAF—Kansas City, Star
KWH—Los Angeles, Examiner—
WWJ—Detroit, Evening News
KJR—Seattle, Wash., V. I. Craft
KFAT—Eugene, Oregon, Pac. Radio Co.
- 6:00 to 6:30 p. m.—
KFBK—Sacramento, Kimball-Upson
KWH—Los Angeles, Examiner—
KUO—San Francisco, Examiner
KUS—Los Angeles, City Dye Works
KGU—Honolulu, The Advertiser
WOC—Davenport, Palmer Sch. Chiropractic
- 6:00 to 7:00 p. m.—
KDYL—Salt Lake City, Telegram
KSD—St. Louis, Post Dispatch
WDAF—Kansas City, Star
KFFA—San Diego, R. O. Sheldon
WWJ—Detroit, Evening News
KMO—Tacoma, Wash., Love Electric Co.
- 6:30 to 7:00 p. m.—
KXD—Modesto, Herald
KZM—Oakland, Hotel Oakland
- 7:00 to 7:30 p. m.—
KLX—Oakland, Tribune,
KFI—Los Angeles, Earle C. Anthony
WWJ—Detroit, Evening News
KSD—St. Louis, Post Dispatch
WDAF—Kansas City, Star
KDYS—Great Falls, Montana, Tribune
KZN—Salt Lake City, Deseret News
KFAF—Denver, Western Radio Co.
KHJ—Los Angeles, Times
KDPT—San Diego, Southern Electric Co.
KFHJ—Santa Barbara, Fallon & Co.
WMAQ—Chicago Daily News
- 7:30 to 8:00 p. m.—
KZN—Salt Lake City, Deseret News
KGG—Portland, Hallock & Watson
KFAF—Denver, Western Radio Co.
KDYS—Great Falls, Montana, Tribune
WRAP—Forth Worth, Tex., Star-Telegram
KSD—St. Louis, Post Dispatch
WDAF—Kansas City, Star
WMAQ—Chicago Daily News
KFAE—Pullman, Wash., State College
WRAP—Forth Worth, Tex., Star-Telegram
- 8:00 to 8:30 p. m.—
KZN—Salt Lake City, Deseret News
KFDB—San Francisco, Mercantile Trust Co.
KFAE—Pullman, Wash., State College
WRAP—Forth Worth, Tex., Star-Telegram
- 8:00 to 9:00 p. m.—
KDZE—Seattle, Rhodes Co.
KFI—Los Angeles, Earle C. Anthony
KDYM—San Diego, Savoy Theatre
KHJ—Los Angeles, Times
KGW—Portland, Oregonian
KDYS—Great Falls, Montana, Tribune
KUO—San Francisco, Examiner
KFBK—Sacramento, Kimball-Upson
KQW—San Jose, Herrold Laboratories
KSD—St. Louis, Post Dispatch
WDAF—Kansas City, Star
WOC—Davenport, Palmer Sch. Chiropractic
KFAT—Eugene, Oregon, Pac. Radio Co.
- 8:30 to 9:00 p. m.—
KFAW—Santa Ana, Radio Den
CFCB—Vancouver, B. C., Marconi Co.
- 9:00 to 9:30 p. m.—
CFCB—Vancouver, B. C., Marconi Co.
KDYS—Great Falls, Montana, Tribune
- 9:00 to 10:00 p. m.—
KFI—Los Angeles, Earle C. Anthony
KDYM—San Diego, Savoy Theatre
KDZE—Seattle, Rhodes Co.
KRE—Berkeley, Maxwell Electric Co.
KFDB—San Francisco, Mercantile Trust Co.
KJQ—Stockton, C. O. Gould
KGG—Portland, Hallock & Watson
KFHJ—Santa Barbara, Fallon & Co.
KHJ—Los Angeles, Times
KDYX—Honolulu, Star-Bulletin
- 10:00 to 11:00 p. m.—
KFI—Los Angeles, Earle C. Anthony
KGU—Honolulu, The Advertiser

PROGRAMS FOR WEDNESDAY, MAY 2, 1923

PROGRAM FOR KHJ Los Angeles Times Los Angeles, California

12:30 to 1:15 p. m.—
News items. Music.

6:45 to 7:30 p. m.—
Children's Hour.

8:00 to 10:00 p. m.—
Soldiers' program by Post War Service
League of Hollywood.

PROGRAM FOR WOC The Palmer School of Chiropractic, Davenport, Iowa

8:55 a. m.—

Time signals (485 meters)

9:00 a. m.—

Weather and river forecast (485 meters)

9:05 a. m.—

Opening market quotations

10:00 a. m.—

Chimes concert

12:00 m.—

Closing stocks and markets

1:30 p. m.—

Educational talk by D. K. Kirk

4:35 p. m.—

Sandman's visit

5:00 p. m.—

Pipe organ concert by E. John Richards,
organist; Edna Sonnevill, soloist.

6:00 p. m.—

Educational lecture, sixth of a series on
"Americanism," under the auspices of the
Masonic Service Association. (Speaker to be
announced.)

8:00 p. m.—

Artist musical program. Edwin Swindell
musical director. Return engagement of
the Davenport Zither Club; A. K. Fahrner,
director.

Immediately following the late musical
program "Tourists' Road Report."

PROGRAM FOR WBAP The Star-Telegram Fort Worth, Texas

5:00 to 6:00 p. m.—

Concert by Mrs. Prigmore and Oscar Web-
ster, with other artists.

7:30 to 8:30 p. m.—

Concert by the Euterpean Club of Fort
Worth. (G. C. A. announcer.)

PROGRAM FOR KLX The Oakland Tribune Oakland, California

3:30 to 5:15 p. m.—

Baseball scores.

7:00 to 7:30 p. m.—

Reserved for amateur talent.

PROGRAM FOR KZM Hotel Oakland Oakland, California

6:45 to 7:00 p. m.—

News bulletins furnished by the Oakland
Tribune, and final ball scores.

PROGRAM FOR KFI Earle C. Anthony, Inc. Los Angeles, California

6:45 to 7:30 p. m.—
Peter Rabbit and His Friends,
Nick Harris Detective Stories; Pantages
Building.

Junior Music Clubs.

10:00 to 11:00 p. m.—

Wa-wan Club; Mrs. William Mabey, presi-
dent, 321 South Van Ness.

PROGRAM FOR KRE Berkeley Gazette—Maxwell Elec. Co. Berkeley, California

Toutjian Bros. Entertainment

9:00 to 10:00 p. m.—

"Carolana in the Morning"—Toutjian's Sere-
naders.

"Down with Booze," comedy sermon—K.
Toutjian.

"Gee But I Hate to Go Home Alone"—V.
Toutjian's Serenaders.

Piano Solo—V. Toutjian, Jr.

"He Loves It"—Comedy song by K. Toutjian,
accompanied by V. Toutjian at the piano.

Banjo Duet—F. Toutjian and Ralph Church.

"After Every Party"—V. Toutjian Sere-
naders.

Novelty Stringed Instrument Solo—Chinery.

K. Toutjian imitating Madame Gargle Gar-
gle, "I Wonder."

Popular Selections—V. Toutjian's Serenaders

PROGRAM FOR KFBK Kimball-Upson Company Sacramento, California

8:00 to 9:00 p. m. KFBK—

Program furnished by the University of
California Farm at Davis, California—Quar-
tettes, instrumental, vocal solos.

PROGRAM FOR KGW The Morning Oregonian Portland, Oregon

3:30 to 4:00 p. m.—

Children's program.

8:00 to 9:00 p. m.—

Concert of vocal and instrumental music.

PROGRAM FOR KDYL Salt Lake City Telegram

6:00 to 7:00 p. m.—

Program featuring songs, instrumental selec-
tions, short talks, phonograph music. Given
under the direction of Ray Dundas, Char-
lotte Trevillyon, Grace Price, Martha Smith
Jenson and Laurinda P. Brewerton, concert
masters.

PROGRAM FOR WHB Sweeny Auto & Electrical School Kansas City, Missouri

10:30 to 11:00 a. m.—

Popular musical concert.

12:00 m. to 1:00 p. m.—

Ladies' hour program of classical music.

5:00 to 5:30 p. m.—

Children's program. Bedtime stories, etc.

SOLD
THROUGH
JOBBER
DEALER

K & C RADIO

KUALITY
CERVICE

KILBOURNE & CLARK MFG. CO., Seattle, Washington
SAN FRANCISCO BRANCH: 591 Mission Street. Phone Sutter 40

**Increase Your Receiving
Range 100% with**

**N. & K.
6000 Ohm**

Twice the Resistance of Most
Other Phones

Radio Headset

Get All the Long Distance
Stations

Made by
NEUFELDT & KUHNKE
Kiel, Germany

**SPECIAL
INTRODUCTORY OFFER**
Our Price.....\$8.50 post paid.
Regular price.....\$14.50

Ideal
for Loud Speaker Use

C. H. Ruby
4719 YGNACIO AVENUE
OAKLAND, CALIFORNIA

GUARANTEE
Money refunded if not sat-
isfactory within five days.



THE GIBBON'S CIRCUIT

One tube set assembled but
not wired

\$32.50

with tube, phones, B battery
and aerial.

80 amp A Battery.....\$12.50

OPEN EVENINGS

**FOLLOW THE ADVENTURES-
OF THE RADIO BUG**

**CLAREMONT
RADIO SHOP**
5661 SHAFTER AVE.
OAKLAND, CAL.

SCHEDULES FOR THURSDAY, MAY 3, 1923

- 7:00 to 7:30 a. m.—
KUS—Los Angeles, City Dye Works
- 9:00 to 10:00 a. m.—
KUO—San Francisco, Examiner
- 10:00 to 11:00 a. m.—
KFDB—San Francisco, Mercantile Trust Co.
WOC—Davenport, Palmer Sch. Chiropractic
- 10:30 to 11:00 a. m.—
KDZE—Seattle, Rhodes Co.
WHB—Kansas City, Sweeny Auto School.
- 11:00 to 11:30 a. m.—
KFDB—San Francisco, Mercantile Trust Co.
KFAV—Venice, Cal., Abbott-Kinney
- 11:30 a. m. to 12:00 m.—
KFAV—Venice, Cal., Abbott-Kinney
KLS—Oakland, Warner Brothers
KGW—Portland, Oregonian
- 12:00 m. to 12:30 p. m.—
KUS—Los Angeles, City Dye Works
- 12:00 m. to 1:00 p. m.—
KLS—Oakland, Warner Brothers
WHB—Kansas City, Sweeny Auto School.
- 12:30 p. m. to 1:00 p. m.—
KHJ—Los Angeles, Times
- 1:00 to 1:30 p. m.—
KWH—Los Angeles, Examiner—
KLZ—Denver, Reynolds Radio Co.
- 1:00 to 2:00 p. m.—
KQW—San Jose, Herrold Laboratories
WBAP—Forth Worth, Tex., Star-Telegram
WOC—Davenport, Palmer Sch. Chiropractic
- 1:30 to 2:30 p. m.—
WDAF—Kansas City, Star
- 2:00 to 3:00 p. m.—
KFDB—San Francisco, Mercantile Trust Co.
KUS—Los Angeles, City Dye Works
- 2:30 to 3:30 p. m.—
KUO—San Francisco, Examiner
KFHJ—Santa Barbara, Fallon & Co.
WMAQ—Chicago Daily News
- 3:00 to 4:00 p. m.—
KFBK—Sacramento, Kimball-Upson
KZN—Salt Lake City, Deseret News
- 3:30 to 4:00 p. m.—
KDZE—Seattle, Rhodes Co.
KLX—Oakland, Tribune,
KGW—Portland, Oregonian
WOC—Davenport, Palmer Sch. Chiropractic
- 4:00 to 4:30 p. m.—
KLX—Oakland, Tribune,
KDZE—Seattle, Rhodes Co.
KFAW—Santa Ana, Radio Den
- 4:00 to 5:00 p. m.—
KWG—Stockton, Portable Wireless
KPEC—Portland, Meler & Frank
WDAF—Kansas City, Star
KDYX—Honolulu, Star-Bulletin
- 4:30 to 5:30 p. m.—
KPO—San Francisco, Hale Brothers
- 5:00 to 6:00 p. m.—
KJO—Stockton, C. O. Gould
KGG—Portland, Hallock & Watson
KFI—Los Angeles, Earle C. Anthony
WOC—Davenport, Palmer Sch. Chiropractic
WMAQ—Chicago Daily News
KGU—Honolulu, The Advertiser
WHB—Kansas City, Sweeny Auto School.
WBAP—Forth Worth, Tex., Star-Telegram
- 5:30 to 6:00 p. m.—
KUO—San Francisco, Examiner
WWJ—Detroit, Evening News
KJR—Seattle, Wash., V. I. Craft
KFAT—Eugene, Oregon, Pac. Radio Co.
- 6:00 to 6:30 p. m.—
KUO—San Francisco, Examiner
KFBK—Sacramento, Kimball-Upson
KWH—Los Angeles, Examiner—
KGU—Honolulu, The Advertiser
- 6:00 to 7:00 p. m.—
KDYL—Salt Lake City, Telegram
KSD—St. Louis, Post Dispatch
KFFA—San Diego, R. O. Sheldon
WWJ—Detroit, Evening News
WOC—Davenport, Palmer Sch. Chiropractic
WDAF—Kansas City, Star
- 6:30 to 7:00 p. m.—
KXD—Modesto, Herald
KZM—Oakland, Hotel Oakland
- 7:00 to 7:30 p. m.—
WWJ—Detroit, Evening News
KLX—Oakland, Tribune,
KHJ—Los Angeles, Times
KFI—Los Angeles, Earle C. Anthony
KDPT—San Diego, Southern Electric Co.
KFHJ—Santa Barbara, Fallon & Co
- 7:00 to 8:00 p. m.—
KZN—Salt Lake City, Deseret News
KLZ—Denver, Reynolds Radio Co.
KDYS—Great Falls, Montana, Tribune
KSD—St. Louis, Post Dispatch
WMAQ—Chicago Daily News
- 7:30 to 8:00 p. m.—
KGG—Portland, Hallock & Watson
KGW—Portland, Oregonian
KHQ—Seattle, Washington, L. Wasmer
WBAP—Forth Worth, Tex., Star-Telegram
- 8:00 to 8:30 p. m.—
KZN—Salt Lake City, Deseret News
WDAP—Chicago, Drake Hotel
KHQ—Seattle, Washington, L. Wasmer
WBAP—Forth Worth, Texas, Star-Telegram
- 8:00 to 9:00 p. m.—
KFI—Los Angeles, Earle C. Anthony
KHJ—Los Angeles, Times
KGO—Altadena, Radio Laboratory
KDYS—Great Falls, Montana, Tribune
KPO—San Francisco, Hale Brothers
KJS—Los Angeles, Bible Institute
KFBC—San Diego, W. K. Azbill
KSD—St. Louis, Post Dispatch
WDAF—Kansas City, Star
- 8:30 to 9:00 p. m.—
KFAW—Santa Ana, Radio Den
CFCB—Vancouver, B. C., Marconi Co.
- 9:00 to 9:30 p. m.—
KFAW—Santa Ana, Radio Den
CFCB—Vancouver, B. C., Marconi Co.
- 9:00 to 10:00 p. m.—
KJR—Seattle, Wash., V. I. Craft
WDAP—Chicago, Drake Hotel
KPO—San Francisco, Hale Brothers
KSD—St. Louis, Post Dispatch
WFAA—Dallas, News
KWH—Los Angeles, Examiner—
KFBC—San Diego, W. K. Azbill
KFHJ—Santa Barbara, Fallon & Co.
KHJ—Los Angeles, Times
KDYX—Honolulu, Star-Bulletin
- 10:00 to 11:00 p. m.—
KFI—Los Angeles, Earle C. Anthony
WDAP—Chicago, Drake Hotel
WDAF—Kansas City, Star
KGU—Honolulu, The Advertiser

CORYPHONE

LOUD SPEAKER

has the very quality you have wanted for so long

Its tone, scientific construction, and individuality of its appearance are the result of 26 years of telephone experience.

Coryphone "Loud Speaker" plugs in like a headset—no external battery is required.

It has an adjustable feature to compensate for individual conditions and can be used with dry cell and storage battery receiving sets.



AT THE LOWEST
PRICE ITS
QUALITY
PERMITS

\$40

Other Cory Quality Radio Telephone Equipment

CORYPHONE "MASTERTONE" SPEAKER, \$22.00	
CORYPHONE "RADIO" HEADSETS	CORYPHONE "RADIO" HEADSETS
DOUBLE RECEIVER TYPE	SINGLE RECEIVER TYPE
3200 OHMS. \$9.50	1600 OHMS. \$5.00
2000 OHMS \$8.00	1000 OHMS, \$4.25
CORYJACKS, 60c, 70c, 80c; CORYPLUGS, \$1.00 Each	

SOLD BY ESTABLISHED DEALERS EVERYWHERE

If Your Local Dealer Cannot Supply You, Send Your Order and Remittance Direct to Us.

ILLUSTRATED LITERATURE ON REQUEST

CHAS. CORY & SON, Inc.

11 MISSION STREET

SAN FRANCISCO

PROGRAMS FOR THURSDAY, MAY 3, 1923

PROGRAM FOR KPO Hale Brothers Radio Station San Francisco, California

8:00 to 10:00 p. m.—

Organ Recital—Miss Gladys Salisbury.
Contralto Soloist—Irene Hagerman, accompanied by Naomi Weaver Cannon.
Friend of Mine.....Sanderson
Thank God for a Garden.....Del Riego
A Southern Lullaby.....Nevin
A Little Bit o' Honey.....Jacobs Bond
Organ Recital—Miss Gladys Salisbury.
Marriage of Figaro.....Mozart
Cavalleria Rusticana.....Mascagni
Medley of Old Songs
Imaginary Ballet.....Coleridge-Taylor
Lelia Gordon Saling, soprano
Accompanied by Mrs. John Sammi-Lute and Mrs. Frank Howard, guitar.
La Goldrina
The Gypsy Maiden, I
When You and I Were Young, Maggie
Guitar Solo—Mrs. Howard.
Madam Soleta Myrpha (Swiss soprano)—
Group of Tyrolese Yodel Songs
Martinatta.....Leoncavallo
Le Rossignol
My Heart at Thy Sweet Voice....St. Saens
Ave Maria.....Bach-Gounod
Miss Gladys Salisbury, accompanist, organ.

PROGRAM FOR KGW The Morning Oregonian Portland, Oregon

11:30 a. m.—
United States Weather forecast (485 meters)
3:30 to 4:00 p. m.—
Woman's Program.
7:30 p. m.—
United States Weather forecast (485 meters)

PROGRAM FOR KZM Hotel Oakland Oakland, California

6:45 to 7:00 p. m.—
News bulletins furnished by the Oakland Tribune, and final ball scores.

PROGRAM FOR WDAF Kansas City Star

1:30 to 2:30 p. m.—
Concert.
4:00 to 5:00 p. m.—
Educational features and musical program.
6:00 to 7:30 p. m.—
Concert.
9:45 to 11:00 p. m.—
Nighthawk Frolic, Coon-Sanders Orchestra.

PROGRAM FOR WHB Sweeny Auto & Electrical School Kansas City, Missouri

10:30 to 11:00 a. m.—
Popular musical concert.
12:00 m. to 1:00 p. m.—
Ladies' hour program of classical music.
5:00 to 5:30 p. m.—
Children's program. Bedtime stories, etc.

PROGRAM FOR KHJ Los Angeles Times Los Angeles, California

12:30 to 1:15 p. m.—
News items. Music.
6:45 to 7:30 p. m.—
Children's Hour.
Music and bedtime story.
8:00 to 10:00 p. m.—
De luxe program featuring Frank J. Steiner, cellist and J. J. Gilbert, flutist.

PROGRAM FOR WOC The Palmer School of Chiropractic, Davenport, Iowa

8:55 a. m.—
Time signals (485 meters)
9:00 a. m.—
Weather and river forecast (485 meters)
9:05 a. m.—
Opening market quotations
10:00 a. m.—
Chimes concert
12:00 m.—
Closing stocks and markets
1:30 p. m.—
1:30 p. m.—
Educational talk by Karl G. Stephan
3:45 p. m.—
Chimes concert
4:35 p. m.—
Sandman's visit
5:00 p. m.—
Artist musical program. Edwin Swindell, musical director; Arlyn Barnard, Irwin Moynihan, Peter MacArthur, Mrs. Charles Hild, Charles Kern and Erwin Swindell.
6:00 p. m.—
Educational Lecture: "Yosemite Park," by James V. Lloyd, National Park ranger.

PROGRAM FOR WBAP The Star-Telegram Fort Worth, Texas

5:00 to 6:00 p. m.—
Concert by Roscoe Carnrike, singing negro dialect songs. (Y. M. C., announcer.)
7:30 to 8:30 p. m.—
Concert by Rex Maupin's Original Texas Hotel Orchestra. (G. C. A. announcer.)

PROGRAM FOR KLX The Oakland Tribune Oakland, California

3:30 to 5:15 p. m.—
Baseball scores.
7:00 to 7:30 p. m.—
Concert by Kornelius Bering, solo violinist.

PROGRAM FOR KFI Earle C. Anthony, Inc. Los Angeles, California

6:45 to 7:30 p. m.—
Peter Rabbit and His Friends.
Y. M. C. A. H. G. Eddy, publicity secretary.
8:00 to 9:00 p. m.—
Sherwood Music School.
9:00 to 10:00 p. m.—
Open.
10:00 to 11:00 p. m.—
Los Angeles Oratorio Society; First Congregational Church choir, John Smallman, conductor, Kramer Studios.

SCHEDULES FOR FRIDAY, MAY 4, 1923

7:00 to 7:30 a. m.—
 KUS—Los Angeles, City Dye Works
 9:00 to 10:00 a. m.—
 KUO—San Francisco, Examiner
 10:00 to 11:00 a. m.—
 KFDB—San Francisco, Mercantile Trust Co.
 WOC—Davenport, Palmer Sch. Chiropractic
 10:30 to 11:00 a. m.—
 KDZE—Seattle, Rhodes Co.
 WFAA—Dallas, News
 WHB—Kansas City, Sweeny Auto School.
 11:00 to 11:30 a. m.—
 KFDB—San Francisco, Mercantile Trust Co.
 11:30 a. m. to 12:00 m.—
 KLS—Oakland, Warner Brothers
 12:00 m. to 12:30 p. m.—
 KLS—Oakland, Warner Brothers
 KUS—Los Angeles, City Dye Works
 WHB—Kansas City, Sweeny Auto School.
 12:30 p. m. to 1:00 p. m.—
 KLS—Oakland, Warner Brothers
 KHJ—Los Angeles, Times
 KDZE—Seattle, Rhodes Co.
 WHB—Kansas City, Sweeny Auto School.
 1:00 to 1:30 p. m.—
 KWH—Los Angeles, Examiner—
 KDZE—Seattle, Rhodes Co.
 1:00 to 2:00 p. m.—
 KQW—San Jose, Herrold Laboratories
 WOC—Davenport, Palmer Sch. Chiropractic
 1:30 to 2:30 p. m.—
 WDAF—Kansas City, Star
 2:00 to 3:00 p. m.—
 KFDB—San Francisco, Mercantile Trust Co.
 KUS—Los Angeles, City Dye Works
 KFAV—Venice, Cal., Abbott-Kinney
 2:30 to 3:30 p. m.—
 KUO—San Francisco, Examiner
 KPHJ—Santa Barbara, Fallon & Co.
 WMAQ—Chicago Daily News
 3:00 to 4:00 p. m.—
 KFBK—Sacramento, Kimball-Upson
 KZN—Salt Lake City, Deseret News
 3:30 to 4:00 p. m.—
 KLX—Oakland, Tribune,
 KDZE—Seattle, Rhodes Co.
 KGW—Portland, Oregonian
 WOC—Davenport, Palmer Sch. Chiropractic
 4:00 to 4:30 p. m.—
 KUS—Los Angeles, City Dye Works
 KLX—Oakland, Tribune,
 KDZE—Seattle, Rhodes Co.
 KFAW—Santa Ana, Radio Den
 4:00 to 5:00 p. m.—
 WDAF—Kansas City, Star
 KDYX—Honolulu, Star-Bulletin
 4:30 to 5:30 p. m.—
 KPO—San Francisco, Hale Brothers
 5:00 to 6:00 p. m.—
 KGG—Portland, Hallock & Watson
 KUO—San Francisco, Examiner
 KJO—Stockton, C. O. Gould
 WOC—Davenport, Palmer Sch. Chiropractic
 WMAQ—Chicago Daily News
 KGU—Honolulu, The Advertiser
 WHB—Kansas City, Sweeny Auto School.
 WRAP—Forth Worth, Tex., Star-Telegram
 WHB—Kansas City, Sweeny Auto School.
 5:30 to 6:00 p. m.—
 WWJ—Detroit, Evening News
 KJR—Seattle, Wash., V. I. Craft
 WRAP—Forth Worth, Tex., Star-Telegram
 KFAT—Eugene, Oregon, Pac. Radio Co.
 6:00 to 6:30 p. m.—
 KUO—San Francisco, Examiner
 KFBK—Sacramento, Kimball-Upson

KWH—Los Angeles, Examiner—
 KUS—Los Angeles, City Dye Works
 KGU—Honolulu, The Advertiser
 6:00 to 7:00 p. m.—
 KSD—St. Louis, Post Dispatch
 KFFA—San Diego, R. O. Sheldon
 KMO—Tacoma, Wash., Love Electric Co.
 KDYL—Salt Lake City, Telegram
 WWJ—Detroit, Evening News
 WOC—Davenport, Palmer Sch. Chiropractic
 WHB—Kansas City, Sweeny Auto School.
 WDAF—Kansas City, Star
 6:30 to 7:00 p. m.—
 KXD—Modesto, Herald
 KZM—Oakland, Hotel Oakland
 7:00 to 7:30 p. m.—
 WWJ—Detroit, Evening News
 KLX—Oakland, Tribune,
 KHJ—Los Angeles, Times
 KFI—Los Angeles, Earle C. Anthony
 KDPT—San Diego, Southern Electric Co.
 KGW—Portland, Oregonian
 WFAA—Dallas, News
 KPHJ—Santa Barbara, Fallon & Co.
 WDAF—Kansas City, Star
 7:00 to 8:00 p. m.—
 KDYS—Great Falls, Montana, Tribune
 KZN—Salt Lake City, Deseret News
 KSD—St. Louis, Post Dispatch
 KFAF—Denver, Western Radio Co.
 WMAQ—Chicago Daily News
 WRAP—Forth Worth, Tex., Star-Telegram
 WHB—Kansas City, Sweeny Auto School.
 7:30 to 8:30 p. m.—
 KFAE—Pullman, Wash., State College
 8:00 to 8:30 p. m.—
 KZN—Salt Lake City, Deseret News
 KDZE—Seattle, Rhodes Co.
 KFAE—Pullman, Wash., State College
 WBAP—Forth Worth, Tex., Star-Telegram
 8:00 to 9:00 p. m.—
 KLS—Oakland, Warner Brothers
 KFI—Los Angeles, Earle C. Anthony
 KFDB—San Francisco, Mercantile Trust Co.
 KWG—Stockton, Portable Wireless
 KHJ—Los Angeles, Times
 KMJ—Fresno, San Joaquin L. & P. Co.
 KDYM—San Diego, Savoy Theatre
 KGW—Portland, Oregonian
 KDYS—Great Falls, Montana, Tribune
 8:30 to 9:00 p. m.—
 KFAW—Santa Ana, Radio Den
 KFAV—Venice, Cal., Abbott-Kinney
 KJR—Seattle, Wash., V. I. Craft
 CFCB—Vancouver, B. C., Marconi Co.
 9:00 to 9:30 p. m.—
 KJR—Seattle, Wash., V. I. Craft
 CFCB—Vancouver, B. C., Marconi Co.
 KFAV—Venice, Cal., Abbott-Kinney
 9:00 to 10:00 p. m.—
 KLX—Oakland, Tribune,
 KFDB—San Francisco, Mercantile Trust Co.
 KFI—Los Angeles, Earle C. Anthony
 KHJ—Los Angeles, Times
 KDYM—San Diego, Savoy Theatre
 KPHJ—Santa Barbara, Fallon & Co.
 KDYX—Honolulu, Star-Bulletin
 9:30 to 10:00 p. m.—
 KHQ—Seattle, Washington, L. Wasmer
 10:00 to 11:00 p. m.—
 KFI—Los Angeles, Earle C. Anthony
 KGU—Honolulu, The Advertiser
 11:00 p. m. to 12:00 midnight—
 KGW—Portland, Oregonian

PROGRAMS FOR FRIDAY, MAY 4, 1923

PROGRAM FOR WOC The Palmer School of Chiropractic Davenport, Iowa

8:55 a. m.—
Time signals (485 meters)
9:00 a. m.—
Weather and river forecast (485 meters)
9:05 a. m.—
Opening market quotations
10:00 a. m.—
Chimes concert
12:00 m.—
Closing stocks and markets
1:30 p. m.—
Educational talk by C. C. Flanagan.
3:45 p. m.—
Chimes concert
4:35 p. m.—
Sandman's visit
5:00 p. m.—
Musical program by the P. S. C. Orchestra
6:00 p. m.—
Educational Lecture: Second of three lectures on "Citizens' Military Training Camps." Speaker, Lieut. Col. George W. Harris, Infantry, United States Army.

PROGRAM FOR KGW The Morning Oregonian Portland, Oregon

3:30 to 4:00 p. m.—
Woman's program.
7:00 to 7:30 p. m.—
University of Oregon Extension Course lecture.
8:00 to 9:00 p. m.—
Concert
11:00 to 12:00 p. m.—
Regular semi-weekly meeting of the Hoot Owls.

PROGRAM FOR KFBK Kimball-Upson Company Sacramento, California

3:00 to 4:00 p. m.—
Selected organ numbers from the T. & D. Theatre. Educational features.
6:00 to 6:45 p. m.—
Educational features; auto and outing information; weather forecast; code practice; baseball scores.

PROGRAM FOR WDAF Kansas City Star

1:30 to 2:30 p. m.—
Concert.
4:00 to 5:00 p. m.—
Educational features and musical program.
6:00 to 7:30 p. m.—
Concert.
9:45 to 11:00 p. m.—
Nighthawk Frolic, Coon-Sanders Orchestra.

PROGRAM FOR WHB Sweeny Auto & Electrical School Kansas City, Missouri

10:30 to 11:00 a. m.—
Popular musical concert.
12:00 m. to 1:00 p. m.—
Ladies' hour program of classical music.
5:00 to 5:30 p. m.—
Children's program. Bedtime stories, etc.
6:00 to 8:00 p. m.—
Regular evening concert.

PROGRAM FOR KLX The Oakland Tribune Oakland, California

3:30 to 5:15 p. m.—
Baseball scores.
7:00 to 7:30 p. m.—
Instrumental and vocal program by pupils of Technical High School of Oakland.
9:00 to 10:00 p. m.—
Dance music by Pacific Service Employees Orchestra:

Peggy, Dear
Carolina in the Morning
Apple Sauce
After Every Party
You've Got to See Your Mama Every Night
Dearest
Honeymoon Time
Aggravating Papa
Vamping Sal
When I'm Alone With You
While the Years Roll by
Sister Kate
Lost—A Wonderful Girl
Lost Pearl
Dumb-bell
You Tell Her, I Stutter
Open Your Ahms, My Alabama

PROGRAM FOR KFI Earle C. Anthony, Inc. Los Angeles, California

6:45 to 7:30 p. m.—
Peter Rabbit and His Friends.
Junior music clubs.
10:00 to 11:00 p. m.—
Public School Music Teachers Association of Los Angeles; Arnold Wagner, president, 1063 South Oxford.

PROGRAM FOR KZM Hotel Oakland Oakland, California

6:45 to 7:00 p. m.—
News bulletins furnished by the Oakland Tribune, and final ball scores.

PROGRAM FOR KDYL

6:00 to 7:00 p. m.—
Program featuring songs, instrumental selections, short talks, phonograph music. Given under the direction of Ray Dundas, Charlotte Trevillyon, Grace Price, Martha Smith Jensen and Laurinda P. Brewerton, concert masters.

PROGRAM FOR KHJ Los Angeles Times Los Angeles, California

12:30 to 1:15 p. m.—
News items. Music.
6:45 to 7:30 p. m.—
Children's Hour.
Music and bedtime story.
8:00 to 10:00 p. m.—
De luxe program.

PROGRAM FOR WBAP The Star-Telegram Fort Worth, Texas

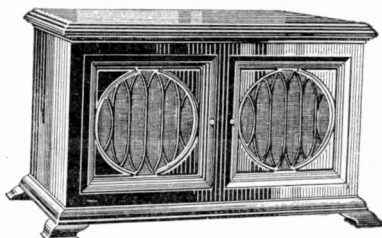
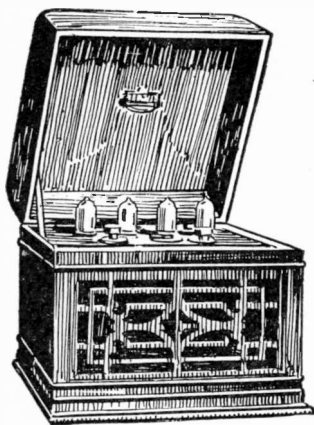
5:15 to 6:00 p. m.—
Concert by Grace Williams' Orchestra.
7:30 to 8:30 p. m.—
Concert by the College of Industrial Arts Girls Orchestra of Gainesville, Texas. (The Hird Hand, announcer.)



IT PAYS YOU

to buy your radio equipment from a concern who understands every angle of the business. When you buy from the Radio Marketing Corporation you are buying from a firm who have given the radio business their deepest study and in a position to give you the benefit of this by their service.

A Few of Our Popular Sets



EASY TERMS

Sets from \$30.00 to \$1,500.00
Peanut Tube Set Complete, \$30.00

KENNEDY

WESTINGHOUSE

GREBE

RAMARCO

RADIO MARKETING CORP.

329 Fourteenth Street, Oakland, Cal.

Oakland's Big, Reliable Radio House

SCHEDULES FOR SATURDAY, MAY 5, 1923

- 7:00 to 7:30 a. m.—
 KUS—Los Angeles, City Dye Works
 9:00 to 10:00 a. m.—
 KUO—San Francisco, Examiner
 10:00 to 11:00 a. m.—
 KFDB—San Francisco, Mercantile Trust Co.
 KJS—Los Angeles, Bible Institute
 10:30 to 11:00 a. m.—
 KDZE—Seattle, Rhodes Co.
 WFAA—Dallas, News
 WHB—Kansas City, Sweeny Auto School.
 11:00 to 11:30 a. m.—
 KFDB—San Francisco, Mercantile Trust Co.
 KFEC—Portland, Meier & Frank
 KFAV—Venice, Cal., Abbott-Kinney
 11:30 a. m. to 12:00 m.—
 KLS—Oakland, Warner Brothers
 KFEC—Portland, Meier & Frank
 KFAV—Venice, Cal., Abbott-Kinney
 KGW—Portland, Oregonian
 12:00 m. to 12:30 p. m.—
 WHB—Kansas City, Sweeny Auto School.
 KLS—Oakland, Warner Brothers
 KUS—Los Angeles, City Dye Works
 WOC—Davenport, Palmer Sch. Chiropractic
 12:30 p. m. to 1:00 p. m.—
 KLS—Oakland, Warner Brothers
 KHJ—Los Angeles, Times
 WHB—Kansas City, Sweeny Auto School.
 1:00 to 1:30 p. m.—
 KWH—Los Angeles, Examiner—
 1:00 to 2:00 p. m.—
 KQW—San Jose, Herrold Laboratories
 WBAP—Forth Worth, Tex., Star-Telegram
 1:30 to 2:00 p. m.—
 WOC—Davenport, Palmer Sch. Chiropractic
 1:30 to 2:30 p. m.—
 WDAF—Kansas City, Star
 2:00 to 3:00 p. m.—
 KFDB—San Francisco, Mercantile Trust Co.
 2:30 to 3:30 p. m.—
 KUO—San Francisco, Examiner
 KFHI—Santa Barbara, Fallon & Co.
 WMAQ—Chicago Daily News
 3:00 to 4:00 p. m.—
 KFBK—Sacramento, Kimball-Upson
 KZN—Salt Lake City, Deseret News
 3:30 to 4:00 p. m.—
 KLN—Oakland, Tribune,
 KDZE—Seattle, Rhodes Co.
 KGW—Portland, Oregonian
 KGW—Portland, Oregonian
 WOC—Davenport, Palmer Sch. Chiropractic
 4:00 to 4:30 p. m.—
 KLN—Oakland, Tribune,
 KDZE—Seattle, Rhodes Co.
 KFAW—Santa Ana, Radio Den
 4:00 to 5:00 p. m.—
 KVG—Stockton, Portable Wireless
 KFEC—Portland, Meier & Frank
 KDXY—Honolulu, Star-Bulletin
 WDAF—Kansas City, Star
 4:30 to 5:30 p. m.—
 KPO—San Francisco, Hale Brothers
 5:00 to 6:00 p. m.—
 KUO—San Francisco, Examiner
 KJO—Stockton, C. O. Gould
 KGG—Portland, Hallock & Watson
 KGU—Honolulu, The Advertiser
 WHB—Kansas City, Sweeny Auto School.
 WMAQ—Chicago, Daily News
 WOC—Davenport, Palmer Sch. Chiropractic
 5:30 to 6:00 p. m.—
 WWJ—Detroit, Evening News
 KJR—Seattle, Wash., V. I. Craft
 KFAT—Eugene, Oregon, Pac. Radio Co.
- 6:00 to 6:30 p. m.—
 KUO—San Francisco, Examiner
 KFBK—Sacramento, Kimball-Upson
 KWH—Los Angeles, Examiner—
 KUS—Los Angeles, City Dye Works
 KGU—Honolulu, The Advertiser
 6:00 to 7:00 p. m.—
 KSD—St. Louis, Post Dispatch
 KFFA—San Diego, R. O. Sheldon
 KMO—Tacoma, Wash., Love Electric Co.
 KDYL—Salt Lake City, Telegram
 WWJ—Detroit, Evening News
 WDAF—Kansas City, Star
 6:30 to 7:00 p. m.—
 KXD—Modesto, Herald
 KZM—Oakland, Hotel Oakland
 WBAP—Forth Worth, Tex., Star-Telegram
 7:00 to 7:30 p. m.—
 KLN—Oakland, Tribune,
 KHJ—Los Angeles, Times
 KFI—Los Angeles, Earle C. Anthony
 KDPT—San Diego, Southern Electric Co.
 WWJ—Detroit, Evening News
 WFAA—Dallas, News
 KFHI—Santa Barbara, Fallon & Co.
 WDAF—Kansas City, Star
 7:00 to 8:00 p. m.—
 KZN—Salt Lake City, Deseret News
 KDYS—Great Falls, Montana, Tribune
 KSD—St. Louis, Post Dispatch
 WDAF—Kansas City, Star
 WMAQ—Chicago Daily News
 7:30 to 8:00 p. m.—
 KGW—Portland, Oregonian
 KGG—Portland, Hallock & Watson
 KHQ—Seattle, Washington, L. Wasmer
 WOC—Davenport, Palmer Sch. Chiropractic
 8:00 to 8:30 p. m.—
 KZN—Salt Lake City, Deseret News
 KHQ—Seattle, Washington, L. Wasmer
 WOC—Davenport, Palmer Sch. Chiropractic
 8:00 to 9:00 p. m.—
 KPO—San Francisco, Hale Brothers
 KDPT—San Diego, Southern Electric Co.
 KFI—Los Angeles, Earle C. Anthony
 KSD—St. Louis, Post Dispatch
 KGG—Portland, Hallock & Watson
 KDYS—Great Falls, Montana, Tribune
 KHJ—Los Angeles Times
 KFAT—Eugene, Oregon, Pac. Radio Co.
 8:30 to 9:00 p. m.—
 KFAW—Santa Ana, Radio Den
 KJR—Seattle, Wash., V. I. Craft
 CFCB—Vancouver, B. C., Marconi Co.
 9:00 to 9:30 p. m.—
 CFCB—Vancouver, B. C., Marconi Co.
 9:00 to 10:00 p. m.—
 KPO—San Francisco, Hale Brothers
 KFI—Los Angeles, Earle C. Anthony
 KJR—Seattle, Wash., V. I. Craft
 KDPT—San Diego, Southern Electric Co.
 WDAP—Chicago, Drake Hotel
 WFAA—Dallas, News
 KHJ—Los Angeles Times
 KDXY—Honolulu, Star-Bulletin
 KFHI—Santa Barbara, Fallon & Co.
 9:30 to 10:00 p. m.—
 WOC—Davenport, Palmer Sch. Chiropractic
 WBAP—Forth Worth, Tex., Star-Telegram
 10:00 to 11:00 p. m.—
 KFI—Los Angeles, Earle C. Anthony
 WDAP—Chicago, Drake Hotel
 KGU—Honolulu, The Advertiser
 WBAP—Forth Worth, Tex., Star-Telegram
 WDAF—Kansas City, Star

The White House

NOTICE

RADIOLA IV TUBES and parts

CONSUME ONE-QUARTER CURRENT OF A WD11 TUBE.
VOLUME EQUAL TO A C301A OR UV201A TUBE.

Ideal for a portable set—Size of tube 1 inch by 3 inches

UV199 Tube	\$6.50	Socket for same.....	\$.75
Adapter to fit standard socket..	1.25	RCA Rheostat for controlling	
		up to three tubes.....	3.00

WD11 TUBES	\$6.50
RCA WD11 SOCKETS.....	.75

All for immediate delivery

Dress Up Your Set in an Original Kennedy Cabinet

Panel Size

6¾ inches by 8 inches.....	\$3.80	12 inches by 14 inches.....	\$ 9.90
6¾ inches by 17½ inches.....	5.95	12 inches by 19 inches.....	11.90
7½ inches by 12 inches.....	7.90		

Polished Bakelite Panels to fit in Stock

*Write or call for the new Federal Catalog illustrating Radio Frequency
hook-ups and Federal parts*

Raphael Weill & Co. Inc.

Fourth Floor

SAN FRANCISCO

CALIFORNIA

PROGRAMS FOR SATURDAY, MAY 5, 1923

PROGRAM FOR KPO Hale Brothers Radio Station San Francisco, California

8:00 to 10:00 p. m.—

Pearl Hossack Whitcomb, well-known contralto and vocal coach of San Francisco, is conducting the operetta "El Rancho del Rey" ("The Ranch of the King.") Mrs. Whitcomb is putting on this production the evenings of April 27 and 28 for the Burlingame Woman's Club and is to be broadcast over KPO May 5. The libretto is by Evelyn Wells of the San Francisco Call; music by George Bigler of Burlingame. The opera holds a particular interest for Californians as the story is of the early Spanish history; time, 1837; scene laid in San Mateo on the old Spanish grant, the Ranch of the King, where cattle were raised for the Presidio. Following are the leading characters:

Mrs. William Weinman.....Hilaria
George Nater.....Don Jose
Erwin Holton.....An Irish Sailor
Axel Larsen.....Manuel
The opera will be given in its entirety.

PROGRAM FOR WBAP The Star-Telegram Fort Worth, Texas

7:00 to 7:20 p. m.—

Review of the interdenominational Sunday School lesson by Mrs. W. F. Barnum, leader of the Barnum Bible Class of the First Methodist Church.

9:30 to 10:30 p. m.—

On Saturday and Sunday the Star-Telegram observes a silent night, courtesy to its tube set listeners wishing to try for long distance records.

PROGRAM FOR KLX The Oakland Tribune Oakland, California

3:30 to 4:30 p. m.—

Baseball scores.

7:00 to 7:30 p. m.—

Code Practice.

PROGRAM FOR WDAF Kansas City Star

1:30 to 2:30 p. m.—

Concert.

4:00 to 5:00 p. m.—

Educational features and musical program.

6:00 to 7:30 p. m.—

Concert.

9:45 to 11:00 p. m.—

Nighthawk Frolic, Coon-Sanders Orchestra.

PROGRAM FOR WHB Sweeny Auto & Electrical School Kansas City, Missouri

10:30 to 11:00 a. m.—

Popular musical concert.

12:00 m. to 1:00 p. m.—

Ladies' hour program of classical music.

5:00 to 5:30 p. m.—

Children's program. Bedtime stories, etc.

PROGRAM FOR KFBK Kimball-Upson Company Sacramento, California

3:00 to 4:00 p. m.—

Selected organ numbers from the T. & D. Theatre. Educational features.

2:30 to 4:30 p. m.—

Special program by the Sacramento Hotel Orchestra.

6:00 to 6:45 p. m.—

Educational features; auto and outing information; weather forecast; code practice; baseball scores.

PROGRAM FOR KHJ Los Angeles Times Los Angeles, California

12:30 to 1:15 p. m.—

News items. Music.

6:45 to 7:30 p. m.—

Children's Hour.

8:00 to 10:00 p. m.—

De luxe program

PROGRAM FOR WOC The Palmer School of Chiropractic, Davenport, Iowa

8:55 a. m.—

Time signals (485 meters)

8:00 a. m.—

Weather and river forecast (485 meters)

9:05 a. m.—

Opening market quotations

10:00 a. m.—

Chimes concert

12:00 m.—

Closing stocks and markets

1:30 p. m.—

Educational talk by C. C. Hall

3:45 p. m.—

Chimes concert

4:30 p. m.—

Sport news

4:35 p. m.—

Sandman's visit

5:00 p. m.—

Artist musical program. Edwin Swindell, musical director. "A Trip Through Melodie Land" (novelty.)

7:30 p. m.—

Dance program (on hour), by P. S. C. Orchestra.

PROGRAM FOR KFI Earle C. Anthony, Inc. Los Angeles, California

6:45 to 7:30 p. m.—

Peter Rabbit and His Friends.
Los Angeles County Dental Society.

Junior Music Clubs.

8:00 to 9:00 p. m.—

University of Southern California.

10:00 to 11:00 p. m.—

Packard Radio Club (male voices); Harry Coe, Ben McLaughlin and Leonard Berg; Madelyne Hardy, accompanist; Radio Central Station. Packard Building.

PROGRAM FOR KGW The Morning Oregonian Portland, Oregon

11:30 a. m.—

United States weather forecast (485 meters).

3:30 to 4:00 p. m.—

Children's program.

7:30 p. m.—

United States weather forecast (485 meters).

Broadcast Stations Heard

Mrs. A. E. Roberts, 2869 Broderick street San Francisco, reports having heard KFI, Los Angeles, on a crystal set.

Gordon Woo, 2861 Vallecito place, Oakland, heard the following in one evening on a crystal set: KGW, KTW, KJS, KFI, KFBK, KHJ.

J. E. Sexton, 601 Equitable Building, Los Angeles, reports a wonderful list, but space prevents publishing them all. Heard on a standard regenerative set: CFCB, KFBK, KPO, KLX, KDPT, WBAP, WOC, WOR, KLZ, KGW, KTW, KXD, WWJ, WOR, KZM, KLS, KRE, KSD.

Heard by Robert McDearmon, 1717 Marin avenue, Berkeley, on a home-made peanut tube detector: KGW, KFI, KQW, KJR, KZN, KMJ, KGG, KUS, KFBK, KJS, KHJ, KWG, KLX, KJJ, KTW, KFAE, KGN and KDYM.

Free...

A standard \$3.50 ADAPTOLA for receiving radio concerts through your phonograph will be given absolutely free of charge with only one subscription for six months (\$1.00).

Right now is the time to mail this coupon.

BROADCAST PROGRAM,

449 Pacific Building,

San Francisco, California.

Send me BROADCAST PROGRAM for 26 weeks and the ADAPTOLA. I enclose \$1.00.

Name

Address

.....

THIS WEEK'S SPECIALS

2 $\frac{1}{4}$ -inch Rotors\$.35
 3 $\frac{1}{4}$ -inch Rotors40
 4-inch Rotors45
 3-inch Dials, 45c; three for..... 1.00
 2 $\frac{1}{2}$ -inch Dials, 35c; three for..... .95
 New Detector and Amplifying Tubes;
 burns on four dry cells..... 4.50
 Radio Horns, as low as..... .50

Freshman's Grid and Condenser
 Variable\$1.00
 Peanut Tubes 2.00
 Spirolas 3.85
 Hydrometers75
 Spaghetti, per yard10
 Million Point Crystals, each..... .10
 Transformers 2.95

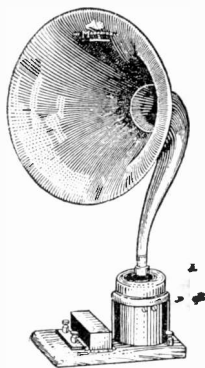
Everything in Radio at the Right Price

We Pay the Postage—No C. O. D. Orders Taken

RADIO HEADQUARTERS

7430 MONETA AVENUE

LOS ANGELES, CALIFORNIA



Magnavox Radio

The Reproducer Supreme

Type R-3 Now—

\$35.00

AT ALL GOOD RADIO DEALERS

Manufactured by—

The Magnavox Company

Oakland, California

YOUR SET

RE-BUILT—REPAIRED—RE-WIRED—TO REACH

Seattle - Denver - Los Angeles

AT A VERY REASONABLE PRICE, IS

YOUR AMBITION—OUR SPECIALTY

BOSSERMAN RADIO LABORATORIES

OPEN EVENINGS AND SUNDAYS

1520 ELLIS STREET

ELECTRIC APPLIANCE COMPANY

807-9 Mission Street, San Francisco

Jobbers of Radio Equipment and Supplies of highest quality. Dealers should send for our New Radio Catalogue No. 58R. No goods at retail.

We solicit the dealers' business only

"DX" RECEIVER

New

Improved

Guaranteed **900 miles** Range

Some of its features:

A new Tube

43 Volt "B" Battery

2000 Ohm Phones

Vernier Condenser

Vernier Variocoupler

Assembled
but
Unwired

\$32.50

COMPLETE

WIRED, \$5.00 ADDITIONAL

Write for additional information

E. M. SARGENT CO.

"An Exclusive Radio Supply House"

1200 Franklin Street

Oakland, California