

GENERAL ELECTRIC

HIGH FIDELITY MONITORING LOUDSPEAKER

MODEL JCP-10

Application: Designed for service in FM Broadcasting Stations or conventional Broadcasting stations, where high fidelity audio monitoring is desired.

An associated high fidelity monitoring amplifier is available and the amplifier may be mounted in the base for the loudspeaker. The amplifier is General Electric Model 4A19A1.

Voice Coil Impedance: 8 ohms

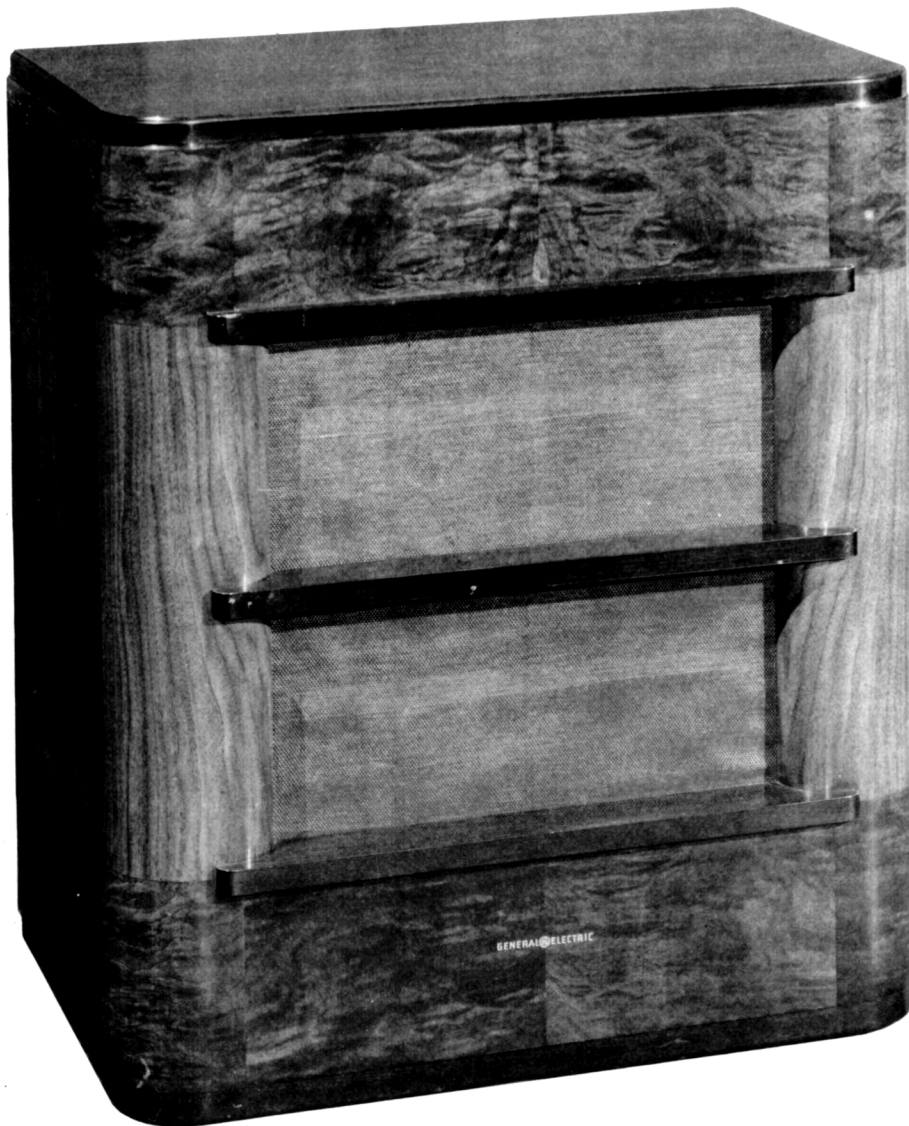
Field: Alnico permanent magnet

Frequency Response: See attached sound pressure curve

Output Capabilities: Approximately 20 watts

Dimensions: Speaker -- 29 in. high by 25 in. wide by
15 7/8 in. deep
Base ----- 23 1/8 in. high by 25 in. wide by
15 7/8 in. deep

Cabinet and Base: Wood with dark finish

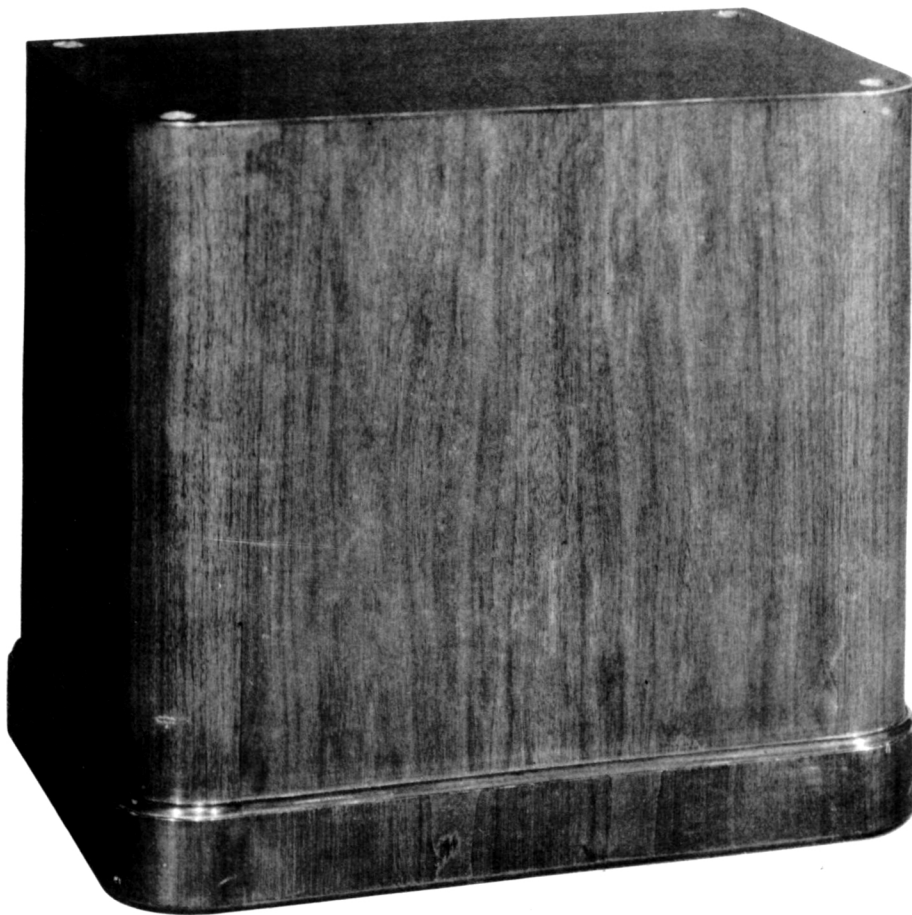


582037 G-E HIGH-FIDELITY MONITORING LOUDSPEAKER, TYPE JCP-10, FOR RADIO BROADCASTING STATION. OBLIQUE FRONT VIEW (FROM LEFT AND ABOVE).

FILING NO. 6916

654.2

4-18-41

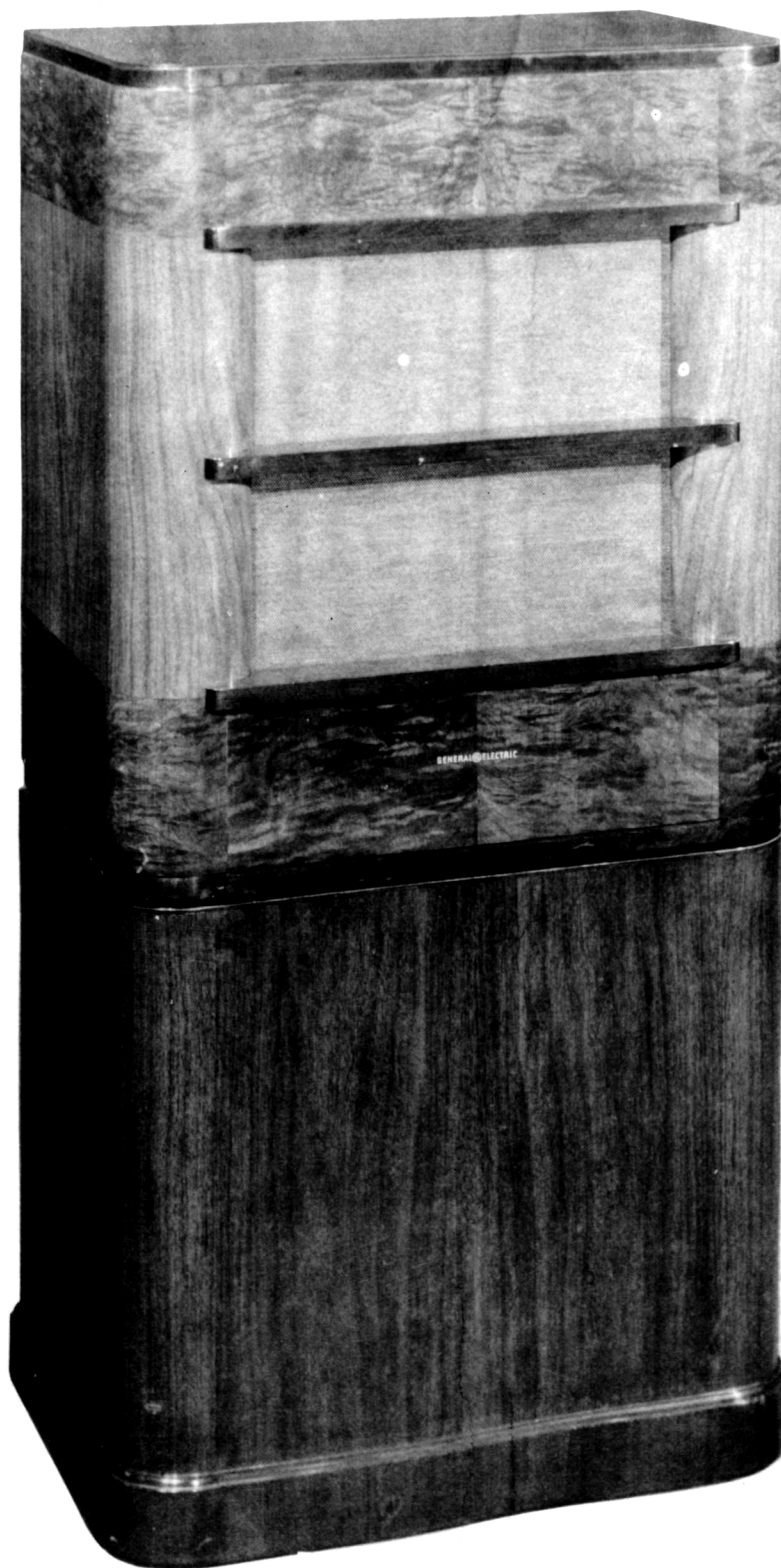


582038 BASE FOR G-E HIGH-FIDELITY MONITORING LOUDSPEAKER, TYPE JCP-10.
OBLIQUE FRONT VIEW (FROM LEFT AND ABOVE).

FILING NO.6916

654.2

4-18-41



582039 G-E HIGH-FIDELITY MONITORING LOUDSPEAKER, TYPE JCP-10, FOR RADIO BROADCASTING STATION, COMPLETE WITH BASE WHICH HOUSES MONITORING AMPLIFIER. OBLIQUE FRONT VIEW (FROM LEFT AND ABOVE).

FILING NO.6916

654.2

4-18-41

