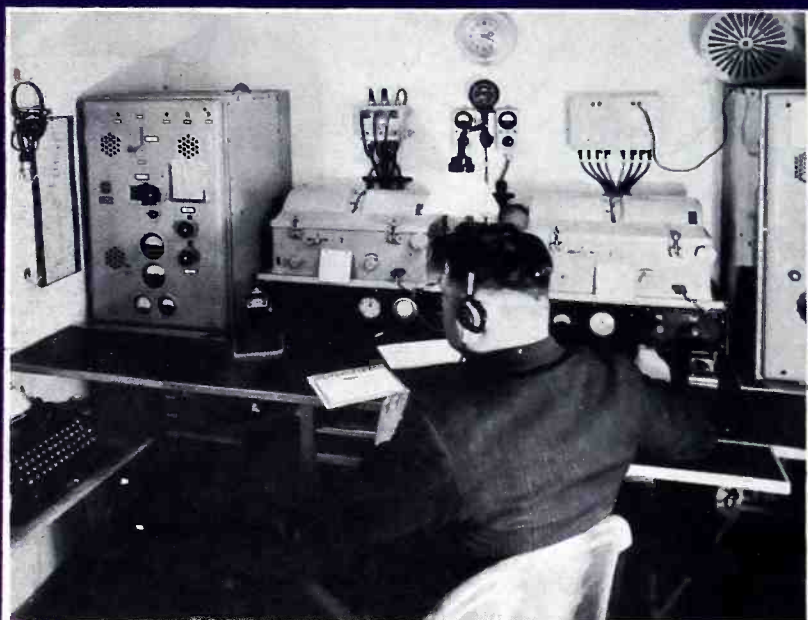


THE GLOBE CIRCLER

JUNE

1936



RADIO STATION ABOARD ZEPPELIN "HINDENBURG"
(Courtesy Aufnahme Luftschiffbau Zeppelin)

ONE
DIME

INTERNATIONAL DX'ERS ALLIANCE

DEDICATED TO REGINA JUBILEE CHAPTER

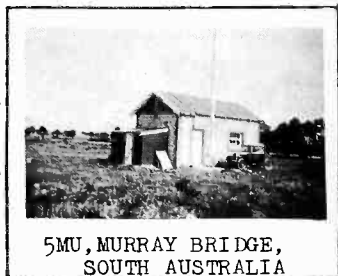
SHORT-WAVE LIST

— SHORT-WAVE NOTES

BROADCAST STATION NEWS

SPECIAL PROGRAM FROM W2XAF/W2XAD

BROADCAST STATION NEWS

5MU, MURRAY BRIDGE,
SOUTH AUSTRALIA

AUSTRIA Radio Linz, 15kW, is now broadcasting on 885kC.

DENMARK All three Danish stations now announce as "Radio Denmark".

FRANCE Agen is now broadcasting on 832 kC.. "Paris Soir" has purchased Beziers, 1429 kC, and will move it to Rueil near Paris.. Bordeaux PTT, 120kW, and PTT National station at Vierzon, 150kW, to replace Radio Paris are both under construction.. New Rennes-Bretagne station at Thourie is making preliminary tests.. Land is being purchased for Centre and Alpes-Grenoble stations.

GREECE A 100kW station at Athens, a 10kW station at Salonica, and a 5kW station at Corfu, will be erected in 12, 18 and 24 months respectively. A 25-year broadcasting monopoly has been granted a private Co.

IRELAND Northern Ireland Regional (BBC) was opened at Lisburn, on March 20. It transmits with a power of 100kW, on 977kC. This is the most powerful of the BBC medium-wave stations.

ITALY Radio Bolzano, 536kC, has increased power to 20kW.. "Radio Marconi", was recently inaugurated at Bologna.

LITHUANIA A new 50-100kW station will be built to replace the present one broadcasting at Kaunas on 155kC.

SPAIN EAJL5, 1022kC, will increase power to 4½kW soon.

TURKEY Radio Ankara is now broadcasting on 153kC.

ASIA

INDIA Latest Government radio proposals include: One central English speaking station of 150 to 500kW; Eight Regional stations for languages of that province; Short-Wave station for Delhi.

PALESTINE Radio Jerusalem, 668kC, 20kW, officially opened on March 30.

A new broadcast station will be erected at Teheran.

S.S. A site has been selected and a Xmtr ordered from England for the new Singapore station, which will be opened next year.

AUSTRALASIA

AUSTRALIA 6KG, owned by Goldfield Broadcasters, Ltd, Kalgoorlie, 1210kC was inaugurated on March 2. It has a power of 500 watts and works from 7 am to 11 a.m. EST, daily. (Mercieca).. 5MU, Murray Bridge, So. Australia (Shown in photograph), is on 13½0kC, with 100 watts power. Schedule is Mon. to Fri. 4:30am to 7:30am, Sat. to 8 am EST. Sign-off song is "Good-Night, Pretty Maiden". Opening number is, "Ah Sweet Mystery of Life". (Betty Geisel).

AFRICA

ALGERIA Radio Alger, Algeria, 94½kC, 12kW, often relays the PTT stations of France. This station will soon be greatly increased in power.

S.AFRICA All broadcasting stations have been taken over by Govt.

NORTH AMERICA

CUBA CMQ, Havana, 880kC, 500 watts, will soon increase to 5kW.. CMK, Havana, 730kC, increased to 3000 watts.. CMCF, Havana, 810kC, increased to 600 watts.. CMX, Havana, Cuba, 920kC, increased to 1000 watts.

CANADA CJAT, Trail, B.C., 910kC, increased to 1000 watts.

PUERTO RICO WKAC, San Juan, 1240kC, 1kW, now has unlimited time on air.

U.S.A. New stations authorized by the F. C. C.: Portland, Maine, 640kC, 500 watts; Champaign, Illinois, 1370kC, 100 watts; Lima, Ohio, 1210 kC, 100 watts; Chattanooga, Tenn., 1420kC, 100 watts; Salt Lake City, Utah 1500kC, 100 watts; Lewistown, Montana, 1200kC, 100 watts; Abilene, Texas, 1420kC, 100 watts; Tuscaloosa, Alabama, 1200kC, 100 watts.

Changes authorized by the F. C. C.: WNAC, Boston, Mass., 1230kC, from 2½ to 5kW power; KMED, Medford, Oregon, 250 watts, from 1310 to 1410 kC; WCAC, Storrs, Conn., 600kC, 500 watts, deleted.

EST		DX TIPS PERIODS	EST
Weekly	Tues., 1-1:30am	1300kC 1kW Los Angeles, California	KFAC
Weekly	Tues., 5:35-6pm	9530kC SW Schenectady, New York	W2XAF
Weekly	Fri., 10:30 or 11pm	980kC 50 Pittsburg, Pennsylvania	KDKA
Weekly	Sun., 1-1:15am	930kC 100W Calgary, Alta, Canada	CKAC
Weekly	Sun., 2:30-2:45am	640kC 50 Los Angeles, California	KFI

OLIVER AMLIE ISSUES CHALLENGE

Oliver Amlie, 56th & City Line Ave., Overbrook, Philadelphia, Penna, U. S. A., who established such an enviable record in consecutive reception reports to VK2ME/VK2ME and VK3LR, of Australia, now seeks to further extend his laurels by issuing an open challenge to any IDA member, to a competition to cover a certain agreed period, to see who can send in the most consecutive reports to new shortwave station, VK6WE, Perth, West Australia (9.59mc), during that period.

Amlie will use his new three tube "Dx'er", which uses a 6C6 for detector, 76 for 1st AF, and a 6B5 in the final.

If any member wishes to accept this challenge, we will be glad to carry reports on the duel in the Globe Circler.

BROADCAST RECEPTION EXPERTS

In Warren C. Reichardt and Evan B. Roberts, both of Massachusetts, IDA probably has two of the most expert and successful foreign BCB dx'ers on this continent. Lack of space prohibits a more detailed review of their respective records, but collectively they hold 249 foreign BCB veri's from 154 separate stations. These include 86 TA's 36 Aussies, 16 Japs, 14 SA's and 2 from Hawaii.

TA veri's by countries are: Austria (4), Czech (6), Danzig (1), Denmark (1), Estonia (1), Finland (1), France (14), Germany (13), Great Britain (1), Holland (1), Hungary (4), Ireland (2), Italy (8), Latvia (2), Norway (1), Poland (4), Portugal (1), Spain (5), Sweden (10), Switzerland (2), USSR (1), Africa (3). The season just past saw Evan Roberts taking the lead, with 135 foreign BCB veri's and nearly 50 reports still out. The highlights of his season's dx'ing were undoubtedly the verifying of many small Swedish stations, some having only 200 watts. Reichardt, however was the first to verify one of these fine catches. The April G.C. for 1935 carries the story of his Halmsstad, Sweden, veri'. Another fine one this season is 4IP, a 50-watter from Australia.

--by E.L. Peders, Westport, N.S.

We are sincerely grateful for very fine IDA broadcasts from BC station CHWC, SW station W2XAF and amateur station, G5NI, respectively.

BEST VERI'S REPORTED RECENTLY

XEU, Veracruz, Mexico, 250 watts.
CJRC, Winnipeg, Canada, 500 watts.
 J.L. Sullivan, Cambridge, N.Z.
LRL, Buenos Aires, Argentina.
CJCB, Sydney, N.S., Canada. 1 kW.
CMQ, Havana, Cuba. 500 watts.
VOWR, St. John's, Newfoundland. 500w.
 W.K. Walton, Sennen S.O., England.
KOSICE, Czechoslovakia. 2600 watts
 R.H. Tomlinson, Port Chester, N.Y.
WPRP, Ponce, Puerto Rico. 100 watts.
 Albert Bertholomew, Bradford, N.Y.
 Leighton Haney, Norristown, Pa.
LYA, Dunedin, N.A. 10kW.
 Joel H. Armentrout, Fitzgerald, Ga.

APRIL RECEPTION IN ENGLAND

Ronald Stansfield

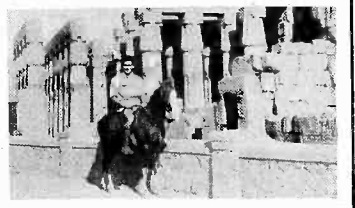
Reception was fair, but spoiled by static, which was unusually heavy for this time of the year. The only N.A.'s heard were WIOD (R5) and WOR (R3). Best South American stations in order of signal strength were: LRL, LR3, LR5, LR6, LS2, LS8, LS5, LR4, LR8, LR10 and CX26. Other Latins heard poor to fair were: WKAQ, WNEL, CMCY, LTL, PRF4, PRF6, PRG3, PRB9, PRH3 and YVIRC.

IDA PRESIDENT TO ADDRESS MEMBERS

For the first time since July, 1934, IDA President, Charles A. Morrison, will address a personal message of greetings to members in all parts of the world. This radio feature will take place on Tuesday June 9, 1936, 5:35 to 6pm EST, in a special "Mail Bag" presentation to be transmitted by General Electric stations, W2XAF (9.53) and W2XAD (15.33), of Schenectady, New York. IDA honorary member, Eugene Darlington, Director of Short-wave Activities for the General Electric Stations, will act as Master of Ceremonies.

The IDA is deeply indebted to the General Electric Co., and we feel that every member possible should listen-in on, and report reception of this broadcast to Mr Eugene Darlington, c/o Short-wave stations W2XAD/W2XAF, Schenectady, New York, U.S.A.

With
Member
Aziz
Cassis
in
Upper
Egypt



"The Globe Circler"

Subscription price \$1.25 per year anywhere.

International



Dx'ers Alliance

Published Monthly Excepting July

CHARLES A. MORRISON
EDITOR

VOLUME 4

BLOOMINGTON, ILLINOIS, U. S. A.

NO. 6

EDITORIAL

Following our annual custom, there will be no July issue of the Globe Circler. The next issue will be mailed early in August. The month of June has been reserved as a vacation period for your President so that he may recuperate before plunging into another DX season.

During this vacation period, we will have to forego answering any letters, except those enrolling new members, or otherwise of an urgent nature, however, we will sincerely appreciate your continuing to send us your DX tips and information the same as usual. This is most important.

Any announcements of wide IDA importance will be transmitted on the DX periods of W2XAF, KDKA, KFI, KFAC and CFAC.

We have a greater program of IDA activities planned for next season than ever before. There will be many changes, greater expansion, a more interesting and useful Globe Circler, new contests and Chapter activities, etc.

We need your help in this annual house-cleaning. What can we do to improve our Club and Globe Circler and our service to you? Some have suggested printing the short-wave list only on alternate months, so that the extra pages might be used for more detailed information. What do you think?

I. D. A. CHAPTERS

ALPHA (Toledo) held last meeting of season on May 23. A special talk on interference was heard. The club will re-assemble early in September. The local bulletin will be issued once a month during June, July and August.

CALGARY FOOTHILLS are displaying members' veri's in a large window in the business district. Leaders in local DX contest are: Mathews 7771 points, Maguire 7290, MacLean 3456, Barnetson 2376. Members will take turns in making talks on radio at future chapter meetings.

Calgary expects to win trophy put up by Dickenson of Regina. Chapter suggests a page in Globe Circler be allotted to interesting bits about members.

GLOBE RADIO DX'ERS (Australia) have pledged enrollment of 100 members by December. Mr. A. Preece, 61 Lipson St, Adelaide, South Australia wishes to correspond with IDA Directors and Representatives in all parts of the world. Letters regarding reception welcomed from any members anywhere. Those who report reception of Aussie stations whose reports have been verified, will be published in Australian magazines. Address your letters to above address. CENTENARY BROADCAST DX AUSTRALIAN CHAMPIONSHIP CONTEST opened March 31, and will close March 31, 1937.

DELTA (Lansing) held regular meeting at Homer Hughes' home May 6. June meeting will be held at home of Mr. Howard Eck.

JEWEL OF MEDITERRANEAN (Malta) report good dx'ing conditions, with the W2XAF special, of April 24, a great success. Mr. Trapani will soon qualify for a D.S.W. Degree. During April, Trapani received 14 veri's, Mercleca 14, Crockford 9, Preziosi 9 and Bonici 2.

RADIO FELLOWSHIP (Los Angeles) New officers are: Mel Buether, Chairman; H. Cote, Vice-chairman and Carl Haverlin, Sec-Treas. Last two meetings held at Technical Service Laboratories, where many interesting radio devices were demonstrated. A new DX Listening Post will soon be established in Palos Verdes Hills.

REGINA JUBILEE (Regina). Regular meetings held April 19 and May 3. Some progress reported in anti-QRM campaign. Mass photograph taken to celebrate first anniversary of R.J. Chapter. A large birthday cake was cut and fittingly disposed of as part of the ceremonies. A letter from RADEX, offering four fine prizes for local contest, drew enthusiastic comments.

THE CAIRO, EGYPT, Chapter will be formed shortly.

APPOINTMENTSFOREIGN REPRESENTATIVES

Algeria- Rene Fleiber, Redacteur a l 'Echo d'Alger, 122 bis, Chemin Fontaine Bleue, Alger.
New Zealand- J. L. Sullivan, Alpha St., Cambridge.

AUSTRALIAN STATE REPRESENTIVES

N.S.W. (SW)-P.J.Carrick, Clifton.
Victoria (SW)-Graham Hutchins, Maribyrnong. (1a.
Victoria (BC)-Ern.Clements, Boron-Thursaday Island, Qsld. (BC) -Ossie Clifford.
W. Australia (SW)-H.Jackson, Perth.
W. Australia (SW), Asst. -G.E.Wignall, North Perth.
Assistant Secretary to Gen.Representative-Mrs. A.E.Preece, 61 Lipson St., Port Adelaide, S.A.

STATE MANAGER

Texas- Roy E. DeMent, Plainview.

FOREIGN AFFAIRS DEPARTMENT

Elwin T.Smith, Herrah, Washington.
Robert Ludwig, Toledo, Ohio.
Art. MacLean, Calgary, Alta, Canada.

VICE PRESIDENTS

In recognition of long and loyal support of the IDA, for meritorious activity in building up the IDA and for outstanding and note worthy achievement in handling present IDA departments, we take extreme pleasure in naming the following new I.D.A. Vice-Presidents:

John DeMyer, 545 Baker St, Lansing, Michigan, Director of 6th Dist.
William Ansell, 168 Wescana St, N, Regina, Sask, Canada, Director of District 1.
James T. Spalding. 3226 Virginia Ave, Louisville, Kentucky, Director of Publicity for IDA.

IDA CONTESTS DIRECTOR

James Dickenson, 2521 Winnipeg St, Regina, Sask, Canada. Mr. Dickenson and his committee will hereafter have charge of planning rules, promoting awards, inspecting verifications, keeping records and announcing winners for all future contests. Mr. Dickenson solicits the immediate suggestions of every member, relative to IDA contests.

GENERAL CHAPTER'S SECRETARY

Lloyd Westmoreland, 2664 Garnet St Regina, Sask, Canada. We have decided to create the above office for the following reasons: to act as a General Headquarters Office for IDA Chapters; to promote new Chapters; to accept requests for and issue Chapter Charters; to seek to promote a

closer co-operation and fellowship between various Chapters; to organize various contests between chapters, and possibly to get out a small chapter's bulletin from time to time.

NEW DEGREE CERTIFICATES

After talking about it for a long time, we have at last printed a new supply of TA, TP, WW and SA degree certificates. These are artistic three-color diplomas, each measuring 7 by 11 inches, suitable for framing purposes. These will sell for 60¢ each, including postage, but for members having the old type certificates, and wishing to replace them, we will make an exchange and send you the new type for 40¢ each. We know you will admire these colorful new diplomas.

IDA standard two-color letterheads printed on 20-pound Hammermill bond, sent post-paid to your address at 100 sheets for 70¢, or 200 sheets for \$1.25 if resident of U.S., and post-paid to any part of the world for 85¢ per 100, or \$1.50 per 200 sheets. Send orders for Degree Certificates or letterheads to I.D.A. Headquarters, Bloomington, Illinois, U.S.A.

CHAPTER CHARTERS

Large, decorative, three-color Chapter Charter certificates for framing, will soon be available for each official IDA local Chapter. Chapter Secretaries, put your order in at once to General Chapter's Headquarters, c/o L. Westmoreland, 2664 Garnet St, Regina, Sask, Canada. The printing of this supply of Charters is being financed through the courtesy of the Regina Jubilee Chapter.

PUBLICITY DEPARTMENT

James T. Spalding, Publicity Director, 3226 Virginia Ave., Louisville, Kentucky, plans to revamp the entire Publicity Dept. set-up this Summer. Mr. Spalding plans to have a Publicity Manager for each North American time zone and for each important foreign country. The new line-up will permit more extensive operations and a swifter transfer of vital news tips. Mr. Spalding will be glad to consider applications for these important IDA offices of Publicity Managers. Mr. Spalding will also be glad to receive suggestions relative to more effective publicity coverage.

JUNE 9, TUES. 5:35-6pm. EST. Schenectady, New York. (15.33mc, W2XAD)
 Personal message by I. D. A. President. (9.33mc, W2XAF)
 JULY 13, MON. 6:30-7:30pm. Rome, Italy. 11.81 or 9.635 mc, 2RO
 DSW Degrees have been conferred upon Messrs. John Shanks, Irving Good-
 eve and Ray Messer.

We want short-wave news while it is sizzling hot. Do not hesitate to send in a short letter or postal when you hear a new station, change in frequency or unusual reception. Regular monthly S.W. reports should be in by the 17th of the month. Write on one side of page only, double space lines, divide items into continents and always state time used. Items of most importance are: new stations; frequency or schedule changes, commercial schedule tips, addresses, identifying signals and unusual receptions. Number of stars denotes importance of item. Four stars highest rating. How good a news reporter are you?

(E.S.T.) NORTH AMERICA-CENTRAL AMERICA (Megacycles used)
ALASKA WXE, Anchorage, uses frequency of 8.86 in Summer.
CANADA VE9DN, Drummondville, Que, being heard on 6.03mc, Sat. at 10pm.
 * CFCX, Montreal (formerly VE9DR)-6.005, relays CFCF 7am-midnight, Sunday 8am to 10pm (Stansfield, Graham, Cole)
C.R. Address of TIGPH, 5.83mc-1000 watts, is "Sr. Luis Cordero Castro, Alma Tica, Apartado 800, San Jose". TIGPH relays TIX, "La Reina del Aire" (Sholin) * TIGP, San Jose, now transmitting on approx. 6.385mc (J. Shanks, Twomey) * TIBWS, Ecos del Pacifico, Puntarenas-7.55, operates from 5-6, and 8:30-10pm and Sundays 4 to 5pm (CSWRC)
CUBA COCH, Havana-9.42R, will have new kW transmitter soon (Laul
D.R. HILA, Santiago de Los Caballeros-6.182, operates from 10:40-2:40pm and 6:40-9:40pm-- HIG, Trujillo City-6.2R, only operating Tues/Fri 6:40-8:10pm. Other days 8:10-9:40pm, except Sundays (CSWRC)
EL SAL- YSJ, San Salvador, owned by Direccion General de Telegrafos,
VADOR Telefonas y Radio Nacionales, inaugurated telephone service with U.S. on April 11. YSJ on 13.41mc. YSK or YSL on 8.19mc (Swenson, Dawson, Shanks, Eck, Rivas, Escobar, CSWRC **)
GUATE- TGS, Guatemala City, on 5.713mc, transmits Wed/Thur/Sunday,
MALA from 6 to 8pm (* L. Miller)
HAITI HH3W, Port-au-Prince-9.615, transmits from 1-2 and 7-9:30pm.
HAWAII New-KKS, Kahuku-16.03, communicates with ships. Uses old call KKP for communication with shore (*Sholin) * Hawaiian hour to CBS over KKH-7.52 and KIO-11.68, now transmitted Mondays, 11:30pm (Roberts)
 * All members in favor of Short-wave relay for KGU, write immediately to H. L. Petty, Sec. of F. C. C., Washington, D. C., before June 11, 1936.
MEXICO XBA, operated by Servicio Meteorologico Mexicano, Tacubaya, DF on 6.977mc, broadcasts weather reports from 9:30am-1pm and 7 to 8:30pm. (* Graham) * XFA2, Vera Cruz-6.54, transmits with 100 watts, from 8:15-9am, noon to 6pm and at 8pm (Thomas) XEWI, Mexico DF, heard well on first harmonic of 11.96mc. Send reports to Box 42874 (V. Smith, Graham)
NICAR- YNLE, Managua, seems to operate on 6.451 and also 6.595mc. The
AGUA schedule is 7:45 to 8:45am, 12:15 to 2:15 and 6:15 to 9:15pm
PANAMA HP5J, Panama, now gives its official frequency as 9.61mc. It transmits from 7 to 10pm and Sundays from 3 to 4pm (Jones, E.R.)
U.S.A. KWU, Dixon, Calif-15.355, works GMBJ, 11:45 to 12:15am and JVD, Nazaki-15.86, right afterwards.. KWX, Dixon-7.51, phones PLV daily at 9:45am and then calls GMBJ (* Roberts) * WLXEH, Avon, Conn., granted FCC license to re-broadcast WTIC on 63.5mc with 150w power ** New, W2XGB, Hicksville, L.I., owned by Press Wireless Inc., on 6.425mc, heard testing between 8 and 10pm, with records and news reports to study feasibility of wide news dissemination. Will test with 10kW first week in June (using special antenna making power equivalent 100kW) Reports solicited (Fox, Twomey, Smith, Cole, Graham, Roberts, Laul, Shanks, Swenson) * New Sked, of WRXK, Pittsburg: 21.5h, 8-10am; 15.21, 10am-8pm; 11.87, 6-10pm and 6.14 from 10pm to 1am (Roberts) * WRXWJ, Detroit-31.6mc, relays WWJ, from 6:15 to 12:30pm, 2-5 and 7-10pm, Sundays from 2:30 to 7:30pm. Code classes, Sundays 7-7:30pm, Tuesdays 7:30-8pm and Thurs 7:30-8pm. SWL program on Tuesdays 7 to 7:15pm (WRXWJ) * W6XKG, Los Angeles-35.6mc, has increased power from 100 to 1000 watts (FCC) * WIEI, NBC portable xmtr-2350kC, was

used aboard the "Green Diamond", streamline I. C. train for its first run between Chicago and St. Louis on Sunday, May 17.

SOUTH AMERICA

ARGENTINA LRU, Buenos Aires-15.29, transmits Spanish news daily at 7-7:30am and 11am to noon (LRU). LRU heard regularly at 3pm (Guilbert, Bonici). LRU heard regularly 9-11am (Balbi) ** LRX frequency being altered account of interference to GSC on 9.59 (LRX). LRX heard on new frequency of 9.66mc, May 8, from 8:30 to 9pm (** Balbi).... Amateurs reported: LURAB 14.13; LULEX 14.065; LU6AF 14.28; LU3BD 14.3mc.

BRAZIL PSH, Rio de Janeiro-10.2, phones CEC, Santiago, Chile-10.67, at 6:55pm daily (* Joe Miller) * Hams reported: PYLDK 14.02; PY2ET 14.05; PYLCK 14.08; PY2BA 14.12; PY2CK 14.345 and PV2AK 14.36.

CHILE CEC, Santiago-10.67, phones PSH daily 7-8:30pm (* Joe Miller) * Amateur CEIAR, Chuquicameta-14.115 heard (Roberts-Joe Miller)

COLOMBIA HJLABJ, Santa Marta, heard on 6.025mc.. HJLABP, Radiodifusora, Cartagena, operates on about 9.615mc, with 800watts power, daily from 11am to 1pm and from 5 to 11pm, Sundays 10am-1pm and 5 to 8pm. Sign off with "El Capitan March" (L. Miller, Purkey, Roberts) ** HJ2ABD, Bucaramanga-5.99, will soon change to 6.14mc, with 1kW power (Stark) * HJ4ABE, Medellin, now being heard on approx. 6.095mc (L. Miller) ** HJ2ABC--Cucuta, will soon operate on 9.58mc, with 1250 watts. Present sked is 11 am to noon and 6 to 10pm (CSWRC) * HJ5ABD, Cali, now on 6.085mc (Stark)

DUTCH-GUIANA PZ1AA, P.O. Box 150, Paramaribo, Suriname, on 14mc, heard 6-9pm (* Hock, Roberts, Schmeichel)

ECUADOR New-HCDT-6.57mc, "La Voz de Ambato", Ambato, being heard around 10-10:30pm (** Stark) ** HCLPM, Quito, on 5.725mc, broadcasts Tues days from 9 to 11pm. Will soon increase power (Graham) * Amateur HCLRF Box 186, Quito, heard on 14.265mc (Joe Miller).

PERU OAX4J, Lima-6mc, will increase power to 2kW by August 1 (Graham) ** New-OAX4K, Radio Goycochea, Lima-6.425, relays OAX4E daily from 7pm on (Rivera) ** New-OAX4P, Radiodifusora Andina Junin, Huancayo-6.122mc, with 100 watts, transmits daily from noon to 1pm and 9 to 11pm. Send reports to Radiodifusora Andina Junin, Casilla 100, Huancayo, Peru (Rivera) * Amateurs OAX4AA, Lima-14.26 and OAX4R, Lima-14.16, being heard.

VENEZUELA YV9RC, Caracas, El Valle-6.4, being heard from 8 to 9:35pm. They announce in English before sign-off (* Shanks)

EUROPE

BULGARIA LZA, Sofia-14.97, heard Sunday morning 12:30-2:30am with strong signals. Also heard 11am-1pm and 3-4pm irregularly (* DeMyer)

CZECHOSLOVAKIA New station at Podedbrady near Prague, to be completed this Summer, will broadcast on 6mc, with 34kW power (CSWRC *)

DENMARK Powerful S.W. station to be erected near Copenhagen * Amateur OZLD, Ringsted-14.135, heard here (Ansell-Regina)

ENGLAND New commercial GAD, Rugby-19.4R, calls VQG daily at 8:45am. GBT, S.S. Queen Mary, world's largest ship, left Southampton May 27, on her maiden trans-Atlantic crossing. Frequencies are: 4.1, 4.42, 8.203, 8.842, 12.34, 13.33, 16.42, 17.8mc. Telephone conversations will be in scrambled speech. Numerous broadcasts will be made from the Q.M. (Sholin, Stansfield, etc.**) * GSD-11.75, has replaced GSN in transmission 1 transmitted daily from 11:30pm to 1:30am * GMBJ, S.S. Empress of Britain, in Pacific waters, telephones on 13.21mc (Sholin)

FRANCE Construction of the new Colonial short-wave center at Noyant, near Allier near Moulins, is progressing and it is hoped to have the 2 new 100kW Xmtrs. completed this year (** Stansfield) ** FNSK, S.S. Normandie, is now on regular schedule again and may often be heard on 13.205, 8.83 or 4.41mc, working TYA-12.215 or TYA2-9.04mc (Guilbert) * TPA2-15.24, being heard at 1-2am with TPA3 (Sholin-Balbi) * Amateur FRFU-14.035mc, heard in afternoons irregularly.

GERMANY World's largest zeppelin, "The Hindenburg", left Friedrichshafen on May 7, for Lakehurst, N.J. to inaugurate first trans-Atlantic passenger and mail service. Transmitter DEKKA heard on 4.04, 5.8 and 10.29mc. Also heard on about 14.80mc, contacting W2XAD (** Trepani, Roberts, Mueller, L. Miller, Dilg, Morrison) ** DHIV, S.S. Reliance, in Pacific waters, heard contacting San Francisco and Kahuku on 13.22mc (Sholin) * DJB, Zeesen-15.2, transmitting a special N.A. hour on Sundays 11am-noon. ** Following stations will carry Olympic relays to U. S: DZH 14.46, DZE 12.13, DZB 10.042 and DZA 9.675mc (Frost) * DJR, Zeesen-15.34, being

1 to 1:30am irreg (Balbi) * DZE, Zeesen-12.13, being heard 5-7pm irreg (*Messer (Shanks-Twomey)

ICELAND TFJ, Reykjavig-12.235, has resumed its Sunday 1:40-2pm Skeds
ITALY Rome Schedules moved up one hour. English news comes on at
5pm daily now. 2R0, 11.81mc, now broadcasting afternoon schedule (Rome
* Amateurs IKS-14.05 and 14.37, and 11TKM 14.35, reported (ers.
LITHUANIA Will install a short-wave transmitter for American listen-
NETHER- PCJ, Eindhoven-9.59mc, now transmitting Sun, 7 to 8pm and Wed
LANDS nesdays 7 to 10pm with Ex. programs for North and South Amer-
ica (* Derlington, Balbi, Shanks, Graham, Startz, Cole) * Amateurs PAOFB-
14.33, PAOIDW, 14.01 and PAORP 14.06, being heard early evenings.

SWEDEN Radio Stockholm, Stockholm-7.12, reported broadcasting Sets,
from 8-11am (* Stokes)

SWITZER- HB9B, Radio Club Basel, Postfach Basel 1-7.022, is transmit-
LAND ting, Wednesdays from 4 to 4:30 pm (* Davies) * HB9B also
heard in early mornings on 14.045mc * Amateurs HB9A, Zuerich-14.11 and
HB9J, Zuerich-14.08 reported (Joe Miller)

U.S.S.R. RT2, Irtutk-14.57, heard May 1, 12-12:30am (** Balbi) * RKI,
Moscow-15.04mc, phones daily 12 to 1am (Balbi) * RNE, Moscow-12mc, trans-
mits daily 3-6pm, Sundays 6-7am and 10-11am, Wed 6-7am (Boyle)

YUGO- New-Radio Beograd, Belgrade-6.09mc, with 1kW, transmits
SLAVIA from 2 to 3:45am, 7 to 8:30am and 11:30 to 1:45pm daily.

Announcements made in several languages. Address reports to Bureau Cen-
tral de Presse, Poste Emmetteur a Ondes Courtes, Belgrade II (***) Gregg)

ASIA-AUSTRALASIA

AUSTRALIA VK2ME, Sydney-9.59mc, Sked for June: Sun, 12-2, 5-9 and 11:30
am to 1:30pm. Sked for July: Sun, 12-2, 4:30-8:30am, 11:30am to 1:30pm...
New station, VK6ME, Applecross near Perth, West Australia, will start to
operate on 9.59mc, during July. Power will be 15kW (** H. Jackson, Sho-
lin, Stansfield, Mercieca) * Hams still coming in well 1-7am. Some of
best are VK2RB, 14, 7XL, 14.01, 2BK, 14.09, 2AP, 14.09, 7JB, 14.1, 2TC, 14.1
5JC, 14.125, 3BK, 14.16, 2RH, 14.3 and 2NO, 14.3mc.

CHINA Nanking will have new 35kW transmitter tuneable to four
spot frequencies between 14 and 100m. Directional antenna array will be
used (* Stansfield) * CQN, Macau-9.665, is being heard Mon/Fri 7-8:30am
EST, with English and Portuguese announcements (Rivera, Purkey, Joe Mil-
ler, Sholin) * XGOX, Nanking, is relaying XGOA, from 6:30 to 8:30am daily
on approximately 9.51mc (Twomey, Balbi, Rivera) * ZBW, Hong Kong-8.75, has
English news at 8:30am (Calgary Chapt) * XQJ, 15.785, contacts JVD, Na-
zaki near 9:30pm and 11 to 12pm (Savage, Joe Miller) * Amateur VS6AQ, Hong
Kong, 14.202mc, being heard 5:30 to 6am (DeMyer)

FIJI'S VPD, Suva, still announces as 13.075, but is actually being
heard on about 13.11mc. Reception much better on this frequency (Sholin)

F.INDO- FZR3, Saigon-16.2mc, is being heard calling FTK, 15.88mc, at
CHINA 6am and 7am irregularly (* Joe Miller)

INDIA VUB is now broadcasting on 5 meters also (* Stansfield)

JAPAN JFZC, S.S. Chichibu Maru, in Pacific waters, phones Dixon, Man-
ila, Kahuku and Dixon. Phones Dixon near 1 am on about 13.32mc (Sholin)
* JVE, Nazaki-15.66, heard at 6:15am (Joe Miller) * Nazaki stations JVG-
14.91 and JVL-11.66, heard with musical programs between 10:30 and 11:30
pm and 2-3am (Balbi, Purkey) * JVH, Nazaki-14.6, talks with TPA2, 15.24, on
Tu/Th/Sat at 6:30am (X. DX) * JVM, Nazaki-10.74, gives English news at
4:55-5am daily. Gives time signals at 7:30am (D1lg) * Amateurs-J2KJ 14
.27, J2LL 14.27, J2FI 14.29 and J2LE 14.24mc, heard in San Francisco be-
tween 12:30-1am PST (Sholin)

JAVA PLE, Bandoeng-18.82, contacts KWU at 6:55pm nightly.. FMA,
Bandoeng-19.345mc, has been sending music around 8:15am irregularly..
PMC, Bandoeng-18.12, PLK, Bandoeng-14.48, and YCP, Balikpapan, Borneo-8.575
are D.E.I. phones that work irregularly (Kolibonso) * YDB-9.65, PLP-11
and PMN-10.26mc, relay NIROM network 5:30-10am, Sun 4:30-10am (Walmsley)
* YDE2, Solo-4.81, being heard 5:30-5:45am PST irreg * Amateur PKLMX, Bat
avia-14.087, reported heard well in early mornings (Joe Miller, Sholin)
** PNI, Macassar, Celebes-8.775, phones PLV between 4 and 5am Mondays. Al-
so about 5:25am irreg (Joe Miller)

MANCHUKUO Commercial stations are: TDC 13.9R, TDA 6.763, TDB 10.105,
TDD 5.83, TDE 10.065, TDF 5.97, TDG 7.57, TDH 13.53 and TDI 15.905 (ER
NEW GUINEA VJZ, Rabaul-13.88mc, being heard at irregular hours.. VK9MI
heard on 11.71mc (* Young)

N.Z. ZLTH, Wellington-11, phones VLJ-9.75, 1:30-3:30am (J. Miller)
PERSIA A short-wave station will be built at Teheran this year.
P.I. KBB, Manila-R.71, commercial station, is owned by Philippine
 Long Distance Telephone Co. Address reports to F. J. Oclassen, Supt. Radio-
 phone Dept. (*Sholin) ** April 4, KZRM, Radio Manila-Manila, began trans-
 mitting on 6.14mc. Also heard testing on frequency of 9.99mc, probably
 through facilities of KAZ. Are broadcasting from 5-7am irregularly and
 will be on regular schedule soon (Walmsley, Sholin, Rivera, Laul) * Ama-
 teurs KALAK-14.16, KALAN-14.21 and KALME-14.1, heard 5:30 to 7:30am
 (DeMyer, Joe Miller) -Miller)
SUMATRA YBG, Medan-10.43, works PLV, 5:30 to 6:30am daily (** Joe-
SYRIA A powerful S. W. transmitter will soon be erected at Homs,
 to the north east of Beyrouth.
U.S.S.R. ROU, Omsk-14.79mc, heard at 7:30am (Joe Miller *) ** RSZ,
 Irkutsk-8.77mc, heard at 4pm (Joe Miller) * RVL5, Khabarovsk-4.25, has
 an English program every odd day of month at 11:15pm. Reports should be
 addressed to Far East Radio Station, RVL5, Radio Committee, Khabarovsk.

AFRICA

BEL. CONGO OPL, Leopoldville-20.04mc, heard Sunday 10-10:30am (J. Miller)
CANARIAS EHZ, El Tablero-10.37 and EDN, Madrid-10.07, heard phoning
 at 5:28am (** Joe Miller) * Amateurs EBAQ-14, EBAF-14.05, Santa Cruz
 de Tenerife, EABLW-Apartado 99, Las Palmas-14.07, EAPAJ-La Laguna, Tener
 ife-14.035, EABAT-14.07, EABAS-14.125 and EABAL-Las Palmas-14.3, being
 heard fine from 6:30pm to early mornings (Roberts, DeMyer, Schmeichel,
 Eck, Swenson, Joe Miller, etc.)
EGYPT SUZ, Cairo-13.81, phones London daily at 3:30pm (*Stokes) **
 Amateurs SUBMA, Alexandria-14.085, 80 watts; SULCH, Cairo-14.3, 300 watts;
SULRK, Port Said-14.260, 20 watts, heard in evenings or early mornings.
 (E. Peters, Joe Miller, Swenson, Wallin)
KENYA VQG, Nairobi-15.275mc, works GAD, Rugby, at 7 to 8am (*Miller)
VQ7LO, Nairobi-6.081mc, heard good 4:30-8pm GMT (Guilbert, France)
S. AFRICA ZSS, Capetown-18.89mc, works London 6-10am (CDXR *)
SPANISH New station heard one evening testing modulation on 6.05.
MOROCCO They announced in Spanish, French and English (**C. Gregg)

CQ

5 METERS

CQ

NEWS FLASH

The Douglas Radio Lab. offers to Bona Fide I.D.A. members for the next 30 days only, a special 10% discount on any equipment described here.

1 TUBE, 5 METER RECEIVER

An inexpensive 5 meter recvr. for the ham or beginner looking for a permanent or portable installation. This extremely selective recvr. is recommended for mobile work this summer. This recvr. uses a super-regenerative circuit, making it extremely sensitive on the 5 meter band. Range 25 to 50 miles.

*Complete receiver with 5 meter coils, wired and tested, with black crystalline cabinet, less tubes and batteries,

\$4.37

Uses 76,56 or 27.

Subject to discount

Mounting clamp for mobile \$0.36

2 TUBE, 5 METER RECEIVER

A two tube 5 meter receiver employing a super-regen. circuit that can be used with a magnetic speaker on almost all stations heard. Uses a 56 or 27 and 47 transformer coupled amplifier. A smooth vol. control is connected across the secondary of the transformer.

Receiver wired and tested, in crystalline cabinet, less tubes and power supply, ready to go.

\$8.40

Subject to discount

DOUGLAS RADIO LAB.
110 WAYLAND STREET,
ROXBURY, MASS., U.S.A.

SHORT-WAVE BROADCASTING STATIONS

NOTE: Complete list including commercial stations was published in the April Globe Circler. For Amateur notes consult Short-wave News.

DIAL	METERS	MEGS	CALL	STATION	TIME	E.S.T.
13.92-	21.54	W8XK	Pittsburg, Penna.	8-10am		
13.94	21.52	W2XE	Wayne, New Jersey.	6:30am to noon.		13M
13.97	21.47	GSH	Daventry, England.	6-8:45am		
16.86	17.79	GSG	Daventry, England.	6-8:45am, 9am-noon.		
16.87	17.78	W3XAL	Boundbrook, N.J.	8am-4pm.		
16.88	17.77	PHI	Huizen, Holland.	7-10:10am, Sun. 1-2pm.		16M
16.89	17.76	W2XE	Wayne, New Jersey.			
16.89	17.76	DJE	Zeesen, Germany.	8:05-11am to East Asia.		
19.52	15.37	HAS3	Budapest, Hungary.	Sunday 9-10am.		
19.55	15.34	DJR	Zeesen, Germany.	1:30-3:30am to South Asia		
19.57	15.33	W2XAD	Schenectady, New York	10am-2pm.		
19.60	15.31	GSP	Daventry, England.	6-8pm.		
19.62	15.29	LRU	Buenos Aires, Argen.	7-7:30am, 11am-N'n, 3-4pm.		
19.63	15.28	DJQ	Zeesen, Germany.	12:30-3:50, 3:55-7am.		
19.64	15.27	W2XE	Wayne, New Jersey.	Noon to 4pm		
19.66	15.26	GSI	Daventry, England.	12:15-4pm.		
19.67	15.25	W1XAL	Boston, Mass.	Irregular on this freq.		19
19.68	15.243	TPA2	Pontoise, France.	4:55-10am.		
19.71	15.22	PCJ	Eindhoven, Holland.	Wed/Sun 6:10-10:10am.		
19.72	15.21	W8XK	Pittsburgh, Penna.	10am-8pm		(N.A.)
19.74	15.20	DJB	Zeesen, Germany.	3:50-7am, Sun 11am-N'n to-		
19.76	15.18	GSO	Daventry, England.			
19.82	15.14	GSP	Daventry, England.	9am-n'n, 3:40-5:45pm		
19.84	15.12	HVJ	Vatican City, Italy	10:30-10:45am, Sat 10-1010		
19.85	15.11	DJL	Zeesen, Germany.	5:45-7:30am to So. Asia.		
19.89	15.083	RKI	Moscow, U.S.S.R.	Sunday 10-11am & irreg.		
20.04	14.97	LZA	Sofia, Bulgaria.	Sun 12:30-2:30am, 11am-N'n		
20.55	14.60	JVH	Nazaki, Japan.	12-1am etc.		
21.61	13.88	VJZ	Rabaul, New Guinea.			
22.00	13.636	SPW	Babice, Poland.	Mon/Wed/Fri 11:30am-12:30		
22.88	13.11	VPD	Suva, Fiji's.	12:37-1:30am ex. Sunday.		
24.52	12.235	TFJ	Reykjavik, Iceland.	Sunday 1:40-2pm. (10-11am		
25.00	12.00	RNE	Moscow, U.S.S.R.	3-6pm, Wed/Sun 6-7am, Sun-		
25.09	11.955	ETB	Addis Abeba, Ethiopia			
25.23	11.88	TPA3	Pontoise, France.	1-4am, 10:15-5:05pm.		
25.27	11.87	W8XK	Pittsburgh, Penna.	5-10pm.		
25.29	11.86	GSE	Daventry, England.			
25.31	11.85	DJP	Zeesen, Germany.	Noon to 2pm to Africa.		
25.36	11.83	W2XE	Wayne, New Jersey.	4-9pm.		25M
25.36	11.83	W9XAA	Chicago, Illinois.	Days irregularly		
25.38	11.82	GSN	Daventry, England.	(N'n, 1:30-5pm.		
25.40	11.81	2R04	Rome, Italy.	7:15-8, 8:15-9:15am, 11am-		
25.42	11.80	HJ4ABA	Medellin, Colombia.	Not heard at present.		
25.43	11.79	DJO	Zeesen, Germany.	3-4:20pm to Africa.		
25.43	11.79	W1XAL	Boston, Mass.	5:30-6:30pm, Sun 3:30-7pm.		
25.51	11.77	DJD	Zeesen, Germany.	11:35-4:20pm, 4:50-10:45pm		
25.53	11.75	GSD	Daventry, England.	10:30am-N'n, 12:15-5:45pm,		
				6-8, 9-11pm, 11:30pm-1:30a		
25.60	11.72	CJRX	Winnipeg, Canada.	7-12pm, S 4pm-10, Su 3-9:30		
25.63	11.71	TPA4	Pontoise, France.	5:15-9:15, 9:45pm-12 mid.		
25.26	11.875	YDB	Soerabaja, Java.	5:30-10am, Sat to 11am.		
27.27	11.00	PLP	Bandoeng, Java.	5:30-10am, irreg to 11am		
27.39	10.955	HS8PJ	Bangkok, Siam.	Monday 8-10am. (Thur 4-5pm		
27.93	10.74	JVM	Nazaki, Japan.	1:50-7:40am, Tu/F 2-3, Mon-		
28.12	10.67	CEC	Santiago, Chile.	7-7:15pm. Sun/Thur 8:30-9		
28.14	10.66	JVN	Nazaki, Japan.	12-1am, Mon/Thur 4-5pm?		
29.04	10.33	ORK	Ruyselede, Belgium.	1:30-3pm. (Sumatra.		
29.24	10.26	PMN	Bandoeng, Java.	5:30-10am, irreg to 11am		
29.50	10.17	HS8PJ	Bangkok, Siam.	Monday 8-10am irregular.		
30.01	9.99	KAZ	Manila, P.I.	Relays XZRM 5-7am irreg.		
30.43	9.86	EAQ	Madrid, Spain.	5:15-9:30pm, Sat 1-3pm.		
31.04	9.666	CQN	Macau, China.	Mon/Fri 7-8:30am.		
31.06	9.66	LRX	Buenos Aires, Argen.	Heard testing here.		

31.09	9.65	CT1AA	Lisbon, Portugal	Tues/Thurs/Sat 3-6pm.
31.09	9.65	YDB	Soerabaja, Java.	5:30-10am, irreg to 11am.
31.13	9.635	2R03	Rome, Italy.	5-6:30pm except Sunday.
31.20	9.615	HH3W	Port-au-Prince, Haiti	1-2, 7-8:30pm. (5-8pm.)
31.20	9.615	HJ1ABP	Cartagena, Colombia	11am-1pm and 5-11pm, Sunday
31.22	9.61	HP5J	Panama City, Panama	11:45am-1:15pm, 7-10pm.
31.25	9.60	CB960	Santiago, Chile.	11am-1pm, 9-11pm.
31.27	9.595	HBL	Geneva, Switzerland.	Sat 5:30-6:15pm.
31.28	9.59	PGJ	Findhoven, Holland.	Sun 7-8pm, Wed 7-10pm.
31.28	9.59	VK6ME	Perth, W. Australia.	Will be operating soon. (pm)
31.28	9.59	VK2ME	Sydney, Australia.	Sun 12-2, 5-9am, 11:30am-130
31.28	9.59	W3XAU	Philadelphia, Penna.	11am-7pm.
31.31	9.58	HJ2ABC	Cucuta, Colombia.	Will operate here soon. 31M
31.32	9.58	GSC	Daventry, England.	6-8, 9-11pm.
31.32	9.58	VK3LR	Melbourne, Australia	3:30-7:30am except Sunday.
31.35	9.57	W1XK	Springfield, Mass.	6am-mid, Sun 7am-midnight.
31.36	9.565	VUB	Bombay, India.	Tues 1:30am-12:30pm, Thurs
				12am-12:30pm irreg. (10:45p
				12:30-3, 8:05-11am, 4:50-
				Testing here irregularly.
				12:30-3:50, 8:05-11am, 4:50-
				10:45pm daily.
				4pm to midnight.
31.48	9.53	W2XAF	Schenectady, N.Y.	5-8am, 11am-6pm, Sun 3-8am.
31.48	9.53	LKJ1	Jeloy, Norway.	Rumored testing here.
31.48	9.53	F3LCD	Saigon, F. Indo-China	Irregular in evenings.
31.51	9.52	XEFT	Veracruz, Mexico.	11:30pm-1:30am, 12:15-5:45p
31.55	9.51	GSB	Daventry, England.	4-7am except Sundays.
31.55	9.51	VK3ME	Melbourne, Australia	6:30-8:30am, Sun 7:30-9:35a
31.55	9.51	XG0X	Nanking, China.	Mon/Wed/Fri N'n-2, 8-11pm.
31.55	9.51	HJU	Buenaventura, Colom.	4:45-5:45pm except Sundays
31.58	9.50	PRF5	Rio de Janeiro, Braz	Evenings irregular. (6am.
31.58	9.50	HI5E	Trujillo City, D.R.	8-9pm, 10-12pm, Sat 10pm-Sun
31.75	9.45	TGWA	Guatemala, Guatemala	10-N'n, 4-6, 9-10pm.
31.80	9.428	COCH	Havana, Cuba.	12:45-2:15, 6:15-7:15pm.
32.26	9.30	YNGU	Managua, Nicaragua.	Sunday 6-7pm.
32.88	9.125	HAT4	Budapest, Hungary.	7-11:30pm except Monday.
33.53	8.948	HCJB	Quito, Ecuador.	Sa/Sun/Tues/Wd/Fri 6-10am.
34.26	8.75	ZBW	Hongkong, China.	Mon/Thurs 4-7am, Sat 9-11pm
				8-9pm and irregular.
34.66	8.665	C09JQ	Camaguey, Cuba.	7:45-10:15pm Ex. Sunday.
34.92	8.59	YNVA	Managua, Nicaragua.	8-11pm.
35.69	8.404	HC2CW	Guayaquil, Ecuador.	10am-1pm, 6-11pm.
36.63	8.19	XEME	Merida, Yucatan, Mex.	6:19-11:19pm.
38.24	7.845	HC2JSB	Guayaquil, Ecuador.	Sat 5:30-6:15pm.
38.47	7.797	HBP	Geneva, Switzerland.	3:15-4:15, 7:30-9:45pm etc.
39.70	7.56	EABAB	Tenerife, Canarias.	5-6, 8:30-10pm, Sun 4-5pm.
39.74	7.55	TI8WS	Puntarenas, C.R.	Monday 11:30pm-midnight.
39.87	7.52	KKH	Kahuku, Hawaii.	Tu/Fri 2-3pm.
39.92	7.51	JVP	Nazaki, Japan.	9-10pm.
40.00	7.50	YNLAT	Granada, Nicaragua.	Sunday 6-8pm.
40.65	7.38	XEGR	Mexico, D.F.	12:10-2:40pm, 6:10-8:10pm.
41.15	7.29	HI1J	San P. de Macoris, DR	Wed/Sat 2:45-4:45pm.
41.80	7.18	CR6AA	Lobito, Angola, Afr.	Tues/Fri 11pm-midnight.
42.13	7.12		Papeete, Tahiti.	Rumored testing 8-11am.
42.13	7.12		Stockholm, Sweden.	Tues/Sat 8-9pm.
42.25	7.10	HKE	Bogota, Colombia.	4:45-8:45pm, Sun 7:45-10am.
42.40	7.08	VP3MR	Georgetown, B. Guiana	Sunday 11:10am-12:10pm.
42.40	7.08	P11J	Dordrecht, Holland.	Wednesday 4-4:30pm.
42.73	7.02	HB9B	Basel, Switzerland.	Tues/Th/Sa 2:40-4:40pm, M/
42.97	6.996	PZH	Paramaribo, D. Guiana	W/F 5:40-7:40pm, 8:40-10:40
				6-7:40pm.
43.02	6.977	HI3C	La Romana, D.R.	Evenings irreg. (am.
43.48	6.90	HI2D	Trujillo City, D.R.	Tues/Fri 12:15-2pm, Sun 3-4
44.02	6.814	HIH	San Pedro, D.R.	8:30-10:30pm ex. Sunday.
44.12	6.80	HCETC	Quito, Ecuador.	Heard from 7 to 8:15pm.
44.12	6.80	HI7P	Trujillo City, D.R.	
44.44	6.75	JVT	Nazaki, Japan.	
44.51	6.74	HC1TQ	Quito, Ecuador.	Sunday 5:15-7:15pm.

44.71	6.71	TIEP	San Jose, C.R.	7-10:30pm except Sundays.
44.98	6.67		Madrid, Spain.	Testing 5-7pm. (11:15pm)
45.05	6.66	HC2RL	Guayaquil, Ecuador.	Sun 5:45-7:45pm, Tu 9:20-
45.25	6.63	HIT	Trujillo City, D.R.	12:10-1:40pm, 5:40-8:40pm.
45.31	6.62	PRADO	Riobamba, Ecuador.	Thurs 9:20-11:40pm.
45.66	6.57	HCDT	Ambato, Ecuador.	Heard around 10pm.
45.76	6.555	HI4D	Trujillo City, D.R.	4:40-7:40pm ex. Sunday.
45.80	6.55	TIRCC	San Jose, C.R.	N'n-2, 6-7pm, Thur 6-11pm
46.01	6.52	YV6RV	Valencia, Venezuela.	5:30-9:30pm.
46.08	6.51	HIL	Trujillo City, DR.	5:40-7:40pm.
46.30	6.48	HI8A	Trujillo City, D.R.	5:40-7:40pm.
46.51	6.451	HJ4ABC	Ibague, Colombia.	8-10pm except Sundays.
46.51	6.451	YNLF	Managua, Nicaragua.	7:45-8:45am, 6:15-9:45pm.
46.51	6.451	HI4V	Trujillo City, D.R.	6-8pm.
46.60	6.44	HJ1ABB	Barranquilla, Colom.	6-10pm ex. Sunday.
46.70	6.425	VE9AS	Fredericton, N.B.	Thurs 10:30pm-1:30am.
46.70	6.425	OAX4K	Lima, Peru.	7 p.m. daily.
46.70	6.425	W2XGB	Hicksville, L.I., NY.	Testing 8-10pm irreg.
46.69	6.425	W3XL	Boundbrook, N.J.	N.B.C. experimental.
46.79	6.412	HI1S	Puerto Plata, D.R.	5:40-7:40pm.
46.88	6.40	YV9RC	El Valle, Venezuela.	8-9:35pm.
46.98	6.385	TIPG	San Jose, C.R.	6-11:15pm.
47.00	6.383	HI3U	Santiago d.l.C.D.R.	5:40-7:40pm. (Sunday.
47.02	6.38	YV1RC	Caracas, Venezuela.	11am-1pm, 5:30-9:30pm ex.-
47.20	6.357	HRP1	San Pedro Sula, Hon.	7-9pm except Sundays.
47.50	6.316	HIZ	Trujillo City, D.R.	5-7:40pm except Sundays.
47.62	6.30	YV12RM	Maracay, Venezuela.	5:30-8:30pm except Sunday
47.77	6.28	HIG	Trujillo City, D.R.	7:10-8:40am, 12:40-2:10pm, 8:10-9:40pm except Sunday
47.85	6.27	C09WR	Sancti Spiritus, Cuba	4-6, 9-11pm.
48.08	6.24	HI8Q	Trujillo City, D.R.	5:40-7:40pm.
48.11	6.235	HRD	La Ceiba, Honduras.	8-11pm, Sun 1pm-1am.
48.15	6.23	OAX4G	Lima, Peru.	7-11pm, Wed to 11:30pm.
48.53	6.181	HI1A	Santiago, D.R.	10:40am-2:40pm, 6:40-9:40p
48.62	6.17	XEXA	Mexico, D.F.	8-8:30am, 6-11:15pm.
48.62	6.17	HJ3ABF	Bogota, Colombia.	7-11pm except Sunday.
48.70	6.16	VPB	Colombo, Ceylon.	
48.70	6.16	YV3RC	Caracas, Venezuela.	3:30-10pm.
48.78	6.15	CB615	Santiago, Chile.	11am-1pm, 7-10pm. (10:30pm
48.78	6.15	CJ90	Winnipeg, Canada.	7-mid, Sat 4pm-1am, S 3pm-
48.78	6.15	HI5N	Santiago, D.R.	6-7am, N'n-2pm, 6-9:30pm.
48.78	6.15	COKG	Santiago, Cuba.	8-9am, 11am-2pm, 5-9pm.
48.81	6.147	ZEB	Bulawayo, S. Rhodesia	Tu/F 12:15-3:15pm, M 11am- N'n, Th 10am-Nn, Su 3:30-6a
48.82	6.145	HJ5ABC	Cali, Colombia.	7-10pm.
48.86	6.140	W8XK	Pittsburgh, Penna.	10pm-1am.
48.86	6.140	KZRM	Manila, Phillipines	5-7am irregular. 49M
48.86	6.140	HJ2ABD	Bucaramanga, Colom.	Will be here soon.
48.89	6.137	CR7AA	Laurenco, Mozambique	12:45-3pm, Sun 8-10:30am.
48.90	6.135	HJ4ABP	Medellin, Colombia.	8-11pm.
48.90	6.135	CHNX	Halifax, N.S., Canada	Relays CHNS irregularly.
48.94	6.13	ZGE	Kuala Lumpur, F.M.S.	Sun/Tues/Fri 6:40-8:40am.
48.94	6.13	COCD	Havana, Cuba.	11am-12 Mid, Sun 5-11pm.
48.94	6.13	TGXA	Guatemala, Guatemala	6pm-midnight irreg.
48.98	6.125	HJ3ABX	Bogota, Colombia.	6-11:30pm except Sundays.
49.00	6.122	OAX4P	Lima, Peru.	Noon-1pm, 9-11pm.
49.02	6.12	W2XE	Wayne, New Jersey.	9-10pm.
49.02	6.12	XEFT	Veracruz, Mexico.	11am-4pm, 7:30-12pm, etc.
49.10	6.11	HJ4ABB	Manizales, Colombia.	8-10pm except Sundays.
49.11	6.109	VUC	Calcutta, India.	Sat 9:35pm-Sun 2:05am, Sun 7:05-10:35, dly 1:35a-1120
49.18	6.10	W3XAL	Boundbrook, N.J.	Mon/Wed/Sat 4pm-midnight.
49.18	6.10	W9XF	Chicago, Illinois.	Su/T/Th/F 8pm-1am, M/W/S 7 am-7pm, 10pm-12:30am.
49.20	6.097	ZTJ	Johannesburg, S. Afr	11:45-12:30am, 3:30-7am etc
49.22	6.095	HJ4ABE	Medellin, Colombia.	7:30-10:30pm.
49.26	6.09	CRCX	Bowmanville, Ontario	5:30-11:30pm, Sun 3-11:30p
49.26	6.09		Belgrade, Yugoslavia	2-3:45am, 7-8:30am, 11:30a -5pm.-

49.27	6.085	2R01	Rome, Italy.	Used in winter.
49.27	6.085	HJ5ABD	Cali, Colombia.	7-10pm.
49.31	6.081	VQ7LO	Nairobi, Kenya, Afr	5:45-6:15am ex. Sat/Sun et
49.34	6.08	HP5F	Colon, Panama.	11:45am-1:15pm, 7-10:30pm.
49.34	6.08	W9XAA	Chicago, Illinois.	6:30am-midnight, Sun 8am-
49.34	6.08		Pereira, Colombia.	9:30-11am, 6:30-9:30pm
49.34	6.08	ZHJ	Penang, F.M.S.	6:40-8:40am ex. Sunday
49.34	6.08	CP5	La Paz, Bolivia.	8-9:30pm.
49.35	6.079	DJM	Zeesen, Germany.	7:30-9:30pm to N.A.
49.42	6.072	OER2	Vienna, Austria.	9am-5pm, Sat 9am-6pm.
49.42	6.07	VE9CS	Vancouver, B.C. (2w)	6-7:30pm, Sun 1:45pm-1am.
49.46	6.065	HJ4ABH	Manizales, Colombia.	6-7:45pm.
49.50	6.06	OXY	Skamlebaek, Denmark.	1-6:30pm, Sun 11am-7pm.
49.50	6.06	W3XAU	Philadelphia, Penna.	7-10pm.
49.50	6.06	W8XAL	Cincinnati, Ohio.	6:30am-7pm, 10pm-12:30am, Su 7am-7pm, 10pm-12:30am.
49.55	6.055	XEUW	Veracruz, Mexico.	7-12pm, Sun 2-3, 4-5am.
49.59	6.05	HJ3ABD	Bogota, Colombia.	7-11:30pm except Sunday.
49.59	6.05	HI9B	Santiago, D.R.	11am-9pm, Sun 12:15-1:15am
49.65	6.04	W4XB	Miami, Florida.	N'n-2:30pm, S/Tu/T 9:15- 10:30pm, M/W/F/S 8:30-10:30
49.65	6.04	HJ1ABG	Barranquilla, Colom	6:30-10pm except Sunday.
49.65	6.04	WLXAL	Boston, Mass.	Tu/Th 7-9pm.
49.75	6.03	HP5B	Panama City, Panama	8-10:30pm.
49.75	6.03	VE9CA	Calgary, Alta, Canada	9am-midnight.
49.77	6.028	PRAB	Pernambuco, Brazil.	4-4:45, 6-8pm.
49.79	6.025	HJ1ABJ	Santa Marta, Colom.	6-10pm.
49.83	6.02	DJC	Zeesen, Germany.	11:35am-4:20pm to Africa
49.85	6.018	ZHI	Singapore, S.S.	Sat 10:40pm-1:10am, Mon/Wd /Thur 5:40-8:10am.
49.88	6.015	HJ3ABH	Bogota, Colombia.	4-11pm, Sun 4-9pm. (11:30pm
49.92	6.01	COCO	Havana, Cuba.	7:55am-7pm, Sun 8-10pm, Sat
49.92	6.01	FIU	Tanarive, Madagascar	Heard 9-10am irreg.
49.95	6.005	CFCX	Montreal, Canada.	7am-mid, Sun 8am-10:15pm.
49.95	6.005	HP5K	Panama City, Panama.	8:30-10am, 1-2, 7-10pm.
50.00	6.00	XEBT	Mexico D.F.	10am-1:15am.
50.00	6.00	OAX4J	Lima, Peru.	7-11pm.
50.00	6.00	ZEC	Salisbury, S. Rhodesia	Tu/F 12:15-3:15pm, M 11am Nn, Th 10am-Nn, Su 3:30-6am
50.00	6.00	RV59	Moscow, U.S.S.R.	Winter channel. (10:10pm.
50.17	5.98	HIX	Trujillo City, D.R.	4:40-5:40pm, Tu/Fri 8:10-
50.17	5.98	XEWI	Mexico, D.F.	8pm-midnight.
50.18	5.975	HJ2ABC	Cucuta, Colombia.	6:30-9pm ex. Sun-See 9.58.
50.26	5.969	HVJ	Vatican City, Italy	2-2:15pm, Sunday 5-5:15am.
50.29	5.966	HJ1ABC	Quibdo, Colombia.	5-6pm, Sunday 3-5pm.
50.42	5.95	HJN	Bogota, Colombia.	8:30-10:30pm ex. Sunday.
50.51	5.94	TG2X	Guatemala, Guatemala	Sat/Mon 4-6, 9-10:30pm.
50.68	5.91	HH2S	Port-au-Prince, Haiti	7:30-9:30pm except Sun.
50.85	5.90	YV8RB	Barquisimeto, Venez.	5:30-9:30pm except Sun.
50.97	5.885	HCK	Quito, Ecuador.	Mon/Fri 8:45-10:45pm.
51.07	5.875	HRN	Tegucigalpa, Honduras	6:30-8, 8:30-10pm.
51.15	5.865	HI1J	San Pedro, D.R.	11:40am-1:40pm, 6:10-8:40p
51.28	5.85	YV5RMO	Maracaibo, Venezuela.	
51.46	5.83	TIGPH	San Jose, C.R.	N'n-2pm, 7-11pm ex. Sunday
51.72	5.80	YV2RC	Caracas, Venezuela.	5:15-9:30pm.
51.90	5.78	OAX4D	Lima, Peru.	Wed/Sat 9-11:30pm.
51.99	5.77	HJ4ABD	Medellin, Colombia.	8-11pm except Sunday.
52.40	5.725	HCLPM	Quito, Ecuador.	Tuesdays 9-11pm.
52.45	5.72	YV1ORSC	San Cristobal, Ven.	5:30-12pm ex. Sunday.
52.51	5.713	TGS	Guatemala, Guatemala	Wed/Thurs/Sun 6-8pm.
54.30	5.525	TI5HH	San Ramon, C.R.	Testing around midnight.
58.03	5.17	PMY	Bandoeng, Java.	4:30-10:30am, 5:30-7:30pm
62.37	4.81	YDE2	Solo, Java.	5:30-10am relays NIROM
62.63	4.79	VE9BK	Vancouver, B.C.	7-9pm, 11pm-1am.
65.22	4.60	HG2ET	Guayaquil, Ecuador.	Wed/Sat 8:19-10:19pm.
70.65	4.25	RV15	Khararovsk, U.S.S.R.	1:30-11:30am.
74.96	4.00	CT2AJ	Ponta Delgada, Azores	Wed/Sat 5-7pm. (5:45pm.
98.70	3.04	YDA	Tandjongpriok, Java.	5:30-10am, 10:30pm-1:30am

New Aerial

To Help Catch Those "DX" Signals



PATTERSON ALL-WAVE ANTENNA

Presenting! Walter McMenamy's special Patterson All-Wave Antenna, the result of extensive research to discover the most suitable antenna to take advantage of the unusual sensitivity and selectivity of the Patterson receiver.

This is not a cheap antenna, but will pay real dividends in increasing excellence of reception. Best materials used throughout. Wire is #10 baked enamel. Insulators of 7" pyrex.

Patterson owners will be surprised at the improvement in reception on all bands.

Endorsed by the Patterson factory.

Direct all inquiries regarding the antenna to the address below.

This is a strictly custom-built antenna, designed primarily for Patterson owners. However this aerial can also be adapted to use with any other receiver as well.

When ordering be sure and specify make and model of your receiver and whether it is wired for a doublet antenna or not.

Net Price...\$16.66 delivered in U.S.A.

The DX Radio Sales Co. --- Distributors
Cable Address "DEEX" WYoming 0429 P. O. BOX 291
BEVERLY HILLS, CALIFORNIA, U.S.A.