



# D X MONITOR

PUBLISHED BY  
THE INTERNATIONAL RADIO CLUB OF AMERICA

Volume 12, Number 33, July 5, 1975

**CONVENTIONS AND OTHER DX-GET-TOGETHERS THIS SUMMER**

First Annual Midwest DXers Rap and Bull Symposium -- June 21. Sponsored by the Great Lakes and Grand River DX Associations. (GLDXA/GRDXA). The meeting will deal with all facets of DX, scrutinize QSLs, and discuss the future of GLDXA's "Newsmemo." For more information, write Bill Whitacre, 2609 Devonshire, Lansing, MI 48910.

RADIO USA - SCADS Information given me today by Don Johnson (SPEEDX) says that the planned Radio USA/SCADS convention has been cancelled. There will be no meeting in Redondo Beach.

Worldwide TV-FM DX Association (WTFDA) August 1-3, annual convention at Lighthouse Point, just north of Fort Lauderdale, FL. Program and recreational activities. For registration and information on hotels, motels, and camping facilities, contact Ken Simon, WTFDA Convention Chairman, 528 Pilgrim Road, West Palm Beach, FL 33405. Send a SASE for reply.

International Radio Club of America (IRCA). August 8-10, at Neil House Motor Hotel, 41 South High Street, Columbus, OH. Registration and banquet fee, \$12. Contact Randy Minnehan, P.O. Box 3312, Columbus, OH 43210 for information. Rooms are: single, \$16; doubles, \$12 and \$13 per person; triple, \$9 per person.

National Radio Club (NRC) August 15-17, at Ramada Inn, Bradley International Airport, Windsor Locks, CT (7 miles north of Hartford, CT). Program, tours, auction, equipment display, films. Registration, \$15 per person. Rooms are: single, \$19; double, \$25; triple, \$30. Registration deadline for rooms is July 31 through the committee. Send SASE for registration and registration forms, to Ron Musco, 16 Chestnut Drive, Windsor Locks, CT 06095.

Association of North American Radio Clubs (ANARC), August 22-24 at Maison du Radio Canada (headquarters of Radio Canada International), Montreal, Quebec, Canada. Accommodations at the Windsor Hotel, 1170 Peel Street, Montreal. Singles, \$21.60; doubles \$28.62; triple, \$37.26. Hotel reservation deadline is July 21st convention committee. Tours, reception by RCI, talks, banquet. Registration fee, \$10; banquet, \$11 payable in advance. Banquet speaker will be Basil "Pip" Duke, former RCSWC President. Write to ANARC Convention Committee, 5766 McAleer Ave., Montreal, Quebec, Canada H4W 2H1 for information.

Northern California DXers (NORCAL) August 29-September 1 (Labor Day weekend) at El Rancho Inn, 1100 El Camino Real, Millbrae, CA 94030 (415-588-2912). Rooms are: single, \$16; double, \$20; triple, \$24. Registration fee of \$1 to cover refreshments and door prizes. Technical sessions, equipment displays, quizzes, auction, etc. Just minutes from the San Francisco International airport, with courtesy car available. Advance registration unnecessary. For further information, write Rick Heald, 17412 Rolando Ave., Castro Valley, CA 94546.

Even though you might not be able to make it IRCA's Convention, try to make it to one of the get-togethers in your part of the country. You'll find that you'll really enjoy it; you'll meet a lot of friendly people and probably learn a lot about DXing.

## Geomagnetic Indices

May 14-20	11	3	27	16	10	17	28
May 21-27	11	11	8	5	10	19	12
May 28-June 3	6	12	6	4	21	24	13

Radio conditions are likely to become unsettled again about 15-17 June and 28-30 June.

## BROADCASTING

### INFORMATION

Michael G. Worst, 4618 Fremont N., #104, Seattle, WA 98103

KUAM	610	10kw	10kw	Arana, Guam	to lkw	0000-0600
new	670	5kw	1kw	Dillingham, Alaska	granted	KDLG
WKVE	800	250w		Cave City, Ky.	start	operation
WXEW	840	250w		Yabucoa, P.R.	"	"
KRRV	910	1kw		Sherman, Texas	requests	KIKM
KTOT	1050	250w		Big Bear Lake, Calif.	granted	KBBV
KANC	1080	10kw		Anchorage, Alaska	start	operation
WGUF	1130	500w		Gulfport, Miss.	"	"
KGMC	1150	1kw		Englewood, Colo.	requests	KWBZ
new	1230	40w	40w	Franklin, N.W.T.	granted	CBQO
					also add	local programs
new	1250	5kw		Forsyth, Mont.	requests	KIKC
KOL	1300	5kw	5kw	Seattle, Wash.	"	KMPS
KX1W	1320	1kw		Clayton, Mo.	"	KADI
KGPC	1340	1kw	250w	Grafton, N.D.	granted	KXPO
WWOC	1400	1kw	250w	Portsmouth, Va.	"	WPCE
new	1500	500w		Wharton, Texas	CP, fax of	KANI
new	1530	1kw	250-CH	Huntingdon, Tenn.	CP	
new	1600	1kw		Marshall, Ark.	granted	KCGS

I thought I would try listing the power the same as the NNRC has been doing, with the day power in the left column and the night power in the right column, and see how it goes over.

## The Inside Story -

EDXR - 462	"Rays of Justice" - 465
WDXR - 463	DX Contests - 466
EDXF - 464	RFS Voodoo List - 470
CDXF - 464	Convention '75 - 471
WDXF - 464	Ad-Visor - 472
DXWW - 467	
DXWW2 - 469	

Notes from HQ\*\*

The third edition of the FM Atlas and Station Directory is now hot off the press. Some 4000 FM stations are listed from Panama to Greenland, including program formats, powers, frequencies, antenna heights etc. I have the second edition and it is a very useful book to have around any DX shack. You can order the latest edition from: FM Atlas Bruce F. Elving, Publisher, PO Box 24, Adolph, MN, 55701. Cost is \$2.50, or \$3.25 first class mail.

## Geomagnetic Indices

June 4 - 10	13	13	10	7	4	7	4
June 11 - 17	21	26	19	10	12	17	11
June 18 - 24	13	11	6	8	6	3	2

eastern dx  
roundup

Editor: Mike Milock,  
Box 533  
Lorain, OH 44052

DEADLINES: 7/21; 8/25; 9/8; 9/15

- 600 CFCH ON, NORTH BAY 0313 6/1 w/ad for North Bay Odeon Drive-In. (DRB-ON)
- WCAO MD, BALTIMORE 2300 6/7 up o/mess w/ID, "WCAO, Baltimore, with Hit-to-Hit Music." (DRB-ON)
- WTAC MI, FLINT 2137 6/8 w/pop mx, ad, PSA, wx, fair. (DRB-ON)
- 790 WMC ? TN, MEMPHIS 6/2 tentative: garbled ID 0245 u/ TTer (KGHL r/c?) had rr mx, another garbled ID 0252 w/TTer gone now. 0255 local (?) nx started, ending 0300 w/ "For 24 Hrs Nx, this is Bill Hall" and another garbled ID sounding like WMC. No location in IDs, but nx had mention of a NJ auto accident which would be kind of wierd on a TN stn. (unless someone from TN was in it....mrm) No positive IDs, all 3 were messed up by TT, static burst or weak sig. WAEB messed up could sound like WMC; repeated tape replay of ID tends toward WMC, but that's what I want to hear, hi. No CKSO/CHIC QRM, poor WTAR o/u. Format and annrcr fit? What's WAEB format? I can't get them here but rarely. (RCM-PQ)
- 850 WJW OH, CLEVELAND 5/18 2158, ID into Mutual Nx, on top. (DHM-PA)
- 860 WLBG SC, LAURENS, 1kHz TT hrd 0201 after no show of KWRP r/c. TT off and on, progressively lower Hz TT each time til 0212 ID w/loc. Nothing else hrd to 0220 t/out. 850-CKVL splash heavy at times, unID (Dom. Rep?) o/u/TT. This 6/3.(RCM-PQ)
- 910 CBO ON, OTTAWA good w/ID and s/off 0112 5/25, said s/on 0700, played "O Canada". (PRM-NJ)
- 940 WGRP PA, GREENVILLE 1900-1910 5/21 dominant before CBM f/in, w/UIP Nx, local nx, wx, slop from WBEN. (DRB-ON)
- WINZ FL, MIAMI 0213 6/1 w/pop mx on the "Alan Michael Show" (DRB-ON)
- CJGX SK, YORKTON 0230-0241 6/1 in & out of WINZ w/MoR mx, TCS, several "GX Radio" IDs. (DRB-ON)
- 1090 CHR8 PQ, LONGUEUIL-ST. JEAN 5/15 1943, FF & EE pops, FF ancrr, u/WBAL. (DHM-PA)
- CKKW ON, KITCHENER 5/26, 0006 on top w/no QRM. WBAL off. ID as "from the Twin Cities of Kitchener and Waterloo," nx, then rel. pgm. (DHM-PA)
- 1190 GHTN PE, CHARLOTTETOWN 0113-0125 5/19 w/MoR mx, wx, tx u/WOVO OC, killed @ 0125 when WOWO came on the air. (DRB-ON)
- 1310 WCAM NJ, CAMDEN good w/rock 5/25 on Bob Charger Show 0215-0414 when CFGM took over, as usual here. Request Line # given, DJ said now NSP.(PRM-NJ)
- 1320 WHHO NY, HORNELL 5/18 2028 on top w/s/off.(DHM-PA)
- 1330 WASA MD, HARVE DE GRACE 5/25 1955 on top WEOB w/light mx, local weather, ID on hour.(DHM-PA)
- WLAT SC, CONWAY 0559 6/9 strong o/WFBC w/s/on mentioning Mutual affiliation & "good mx" format, then SSB. (SF-TN) (Stephen, RGM would like to know if you could help him on his 790 unID above. Does he have WMC?.....mrm)
- 1340 WENT NY, GLOVERSVILLE 6/6 fair-good o/GY mess 0532 w/nx & wx, ID 0534. (RCM-PQ)
- WTWN VT, ST. JOHNSBURY 6/6 fade in o/mess w/ID 2312 after nx, wx, sports, then s/off w/SSB 0231½. (RCM-PQ)
- 1360 WIXZ PA, McKEESPORT 6/8 up w/promo & ID 2242, country mx. (DRB-ON)
- WEBB MD, BALTIMORE 5/17 2010 s/off hrd @ 2015, IDs as "B'casting for Baltimores Black Citizens." On top. (DHM-PA)
- 1370 WFEA NH, MANCHESTER 5/26 0000 ID hrd u/WSPD w/WSAY off. (DHM-PA)
- WSAY NY, ROCHESTER 6/5 ETing w/ID 0450 thru unID TT (WTKY r/c?) & WSPD. Heavy static QRM.(RCM-PQ)
- 1390 KHOB NM, HOBBS fair u/WVON/WROA w/"Good Morning" & 2 ET IDs 0201 6/2; another ID 0213 but no modulation noted in between. Dominant WCSC was off NSP sked for some lovely reason.(SF-TN)
- WEOK NY, FOUGHKEEPSIE, Testing, simulcast w/FM w/Cat Stevens, Loggins & Messina mx 0100-0115+ on 6/2. (PRM-NJ)
- 1400 WEST PA, EASTON good w/no sign of WSTC w/ID, Ray Charles song 0746 5/29. (PRM-NJ)
- 1410 WDOV DE, DOVER 5/18 2014 on top w/fishing details for Del. Bay, then ID. (DHM-PA)
- WIKI VA, CHESTER 5/18 2013 on top of WDOV for s/off. (DHM-PA)

- 1420 CKPT ON, PETERBOROUGH 6/9 0152 fair and alone w/rr, WHK off. (SF-TN)
- 1440 CFGO ON, OTTAWA 5/19 0211 w/pop mx, ads. (DRB-ON)
- 1450 WENZ VA, HIGHLAND SPRINGS 6/4 fade in on top w/ID & loc. 0358 very clear, then rr mx. (RCM-PQ)
- WQSN SC, CHARLESTON strong on 6/16 ET w/various pitches of TT; slow, "non-professional" voice ID 0222. (SF-TN)
- 1520 WKVI IN, KNOX 5/11 2000, TENTATIVE u/WKBW w/s/off, ID as "W ?? I" (or Y), pwr as 250 watts given, other details not hrd. They do s/off this time per maps. Consider my best catch.(DHM-PA)
- 1550 WSER MD, ELKTON 5/14, 2013 s/off, mixing w/others incl. WKBA. (DHM-PA)
- 1560 KKAA SD, ABERDEEN 6/8 fair-good signal thru CKLM splash, ID 0333 & promo for "Radio Active Nx." Phone # 229-1560, "KK-double A" IDs, c&w mx. Static high. Heard again much better 0300 6/13 w/CKLM off w/rare SP on a Friday. (RCM-PQ)
- 1570 WFLR NY, DUNDEE 5/13, 1855 ID hrd in jumble. Claims to be "The Sound of the Seventies". Reminds me of a neighbor, hi! (DHM-PA)
- WTOW MD, TOWSON 5/13 1855 end of Rel. pgm by Rev. McIntire, ID, into local rel. amnts, on top briefly. (DHM-PA)
- WLSC SC, LORIS, poor u/XERF/WYTI w/s/on annrcmt at 0600 6/4. (SF-TN)
- 1580 WHEX PA, COLUMBIA 6/13 ETing poor w/ID 0301 using TT. (RCM-PQ)
- 1590 WEEZ PA, CHESTER 5/25, 0600 on top w/ID as "People Power Radio". (DHM-PA)
- WGGO NY, SALAMANCA 6/9 2100 w/s/off ann., no SSB. (DRB-ON)
- 1600 WGIV NC, CHARLOTTE good o/u/KATZ w/r&b 0245 6/17. (SF-TN)

- PER THE LIST:
- 860 WAMI AL, OPF 6/11 2nd Wed r/c exlnt w/full ID (loc., pwr, add, etc.) 0502 & several more IDs every 3 min, w/DT in between. (RCM-PQ)
- 960 KFVS MO, CAPE GIRARDEAU 6/6 1st Fri r/c fair w/TT o/u/CKWS pest, surprise w/ID surfacing fairly clear 0114 and off. (RCM-PQ)
- 980 WFHG VA, BRISTOL 6/6 1st Fri r/c w/mx, ID 0225 & a couple more to 0234 phon. ID s/off. Pesty CKGM nulled on my new 1 day old loop.(RCM-PQ)
- 1240 WRTA PA, ALTOONA 6/6 0132-40 fair o/WROV w/r/c-TT, IDs at beginning & end. (SF-TN)
- 1360 WHGB VA, HARRISONBURG 6/6 1st Fri r/c fair-poor 0005 t/in w/TT, poor but readable ID 0015. 0/u/ WDRG. (RCM-PQ)
- WFLW KY, MONTICELLO fair u/WSAI w/ID 0430 6/14 at end of r/c-TT. (SF-TN)
- 1410 WHLN KY, HARLAN poor/fair o/WUNI/WFXC w/long ID 0046 6/10 at end of r/c. TT 0030-37, 0042-44, otherwise OC w/no IDs noted. Dominant WING off. (SF-TN)
- 1470 WJDY MD, SALISBURY 5/26 0015 o/u/ much QRM w/TT and IDs. (DHM-PA)
- 1550 WSHN MI, FREMONT 6/7 1st Sat r/c used Tigers BB from FM sister stn on r/c 0114 ID to 0148 t/out. (RCM-PQ)
- 1580 KCHA IA, CHARLES CITY 6/14 2nd Sat r/c using TT, ID 0148. Mex. QRM & another TTer. CKLM-1570 splash a problem. (RCM-PQ)
- 1600 WTYM MA, EAST LONGMEADOW fair u/KATZ w/ID 0207 6/9 at end of unlisted r/c-TT. Nothing heard before 0205. (SF-TN)

- ALSO FOR JUNE:
- 1st WED: 1070 WFLI TN M (RCM-PQ)
- 1st THUR: 900 WLSI KY T (RCM-PQ)
- 1st FRI: 900 WGOK AL T (RCM-PQ)
- 1580 WAMY MS dt (RCM-PQ)
- 2nd MON: 990 WCAZ IL T (RCM-PQ)

- CONTRIBUTORS AND SUCH:
- (PRM)-Paul Mount/471 Emerson Ave., Teaneck NJ 07666/Ameco R-5 w/40' LW
- (DHM)-Don Moore/Box 6, Milesburg PA 16853/XCR-30 & 60' LW
- (RCM)-Richard Mayhew/266 Dufferin Rd., Valleyfield PQ, J6S 1Z7/
- (DRB)-David Ball/62 Lexfield Ave., Downsview ON M3M 1M5/ DX-150A & SM-2
- (SF)-Stephen Francis/1620 Lodge St., Alcoa TN 37701/ Realistic TRF
- Real fine job this month, especially in the frequency check section. Not much DX done here, to much QRM from static. I will keep trying, though! Keep DXing and keep reporting to all your respective columns! 73 to all until next month!

Mike

# western dx roundup

July 5, 1975

Deadlines: July 23, August 27

Reporters for this issue:

- (JC) Jack Carlton-3810 Greenbrier Dr.-Boise, ID
- (NHP) Nick Hall-Patch-3272 Alder St.-Victoria, BC  
Hybrid console rx, spiral loop
- (JFO) Jon Orren 529 N.E. 83rd St.-Seattle, WA  
Hallicrafters s-120, SM-1  
(JFO\*) indicates DX using a HQ-150, SM-1  
(JFO-DX) indicates DX using a Realistic  
DX-150, SM-1
- (bp) Bruce Portzer-7021 Sandpoint Way N.E #215-  
HQ-180A, SM-2 Seattle, WA

\*\*\*\*\*

- 610 CKYL AB, Peace River 6/9 0409 w/C&W and an ad for a Peace River eatery. DJ gave an ID in an accent closer to the deep south than Canada's north. Pair strength but not too clear. KFRC nulled.
- 670 KBOI ID, Boise lost their main (NHP-BC) tower in an electrical storm 6/2 shortly after 1400 and returned to the air using 10 kw nondirectional on one of the three remaining towers 6/2 1650. CE says they reduce power below 10 kw nights to protect WMAQ. They expect a replacement tower 6/23 and hope to be back up to full power by the first week of July. S/off still 0205 nightly.
- 720 \*KDWN\* NV, Las Vegas 5/6 on ET without (JC-ID) TT and mx, live ID 0651. (JFO\*-WA)
- 800 \*CKOK\* BC, Penticton 6/2 0409 ID "CKOK" etc. ET similiar to that of CKOO-1240. (JFO)
- 860 LPRT BC, 6/1 0402 GSQ/CBU. When does CFPR s/off? (JFO-WA) (0315 according to NRC Domestic Log.-NH)
- 910 \*KCJB\* ND, Minot 5/26 0111 tuned in for r/c per the list 0110, called stn and had break out in 1KC TT at 0111 for ID. ND #5. U/KIXI. (JFO\*-WA)
- 910 CFJC BC, Kamloops 6/17 0418 had wx ment. 1300, spot for drive-in restaurant, nice ID, C&W mx. (JFO-DX-WA)
- 1030 KCTA TX, Corpus Christi 6/5 0650-0700 in like a local w/SS religion, EE ID at 0700 & into EE religion. Obviously s/on before LSR which I work out at 0715. (NHP-BC)
- 1060 KUPD AZ, Tempe 5/26 0454 ID for KUPD, KUPD-FM, temperature as 79°. Into rr song, CFON off. Also noted MMs 6/2 & 6/16.
- 1060 CFON AB, Calgary noted off MM's (JFO\*-WA) 5/12 & 5/26, but left on OC. KUPD noted dominating 5/26, either they or WHOE on 5/12. New SP? (bp-WA)
- 1190 ?KEZY? CA, Anaheim probably the one at 0710 6/15. PDT TCs, C&W & IDs sounding like K-E-Y (E & Z run together?). Quite weak and only fair readability. KEX off. (NHP-BC)
- 1220 CJOC AB, Lethbridge 6/23 0440 good steady signal somewhat mangled by CKDA OC. Countryish mx, jingle ID. CKDA back on 0533. Don't you hate 50kw NSP locals?
- 1230 ?KRDR? OR, Gresham 6/23 0525 NRC Log (NHP-BC) says this is off MM, but pretty clear ID and looped right. Had to loop out CKDA OC for any intelligibility. (NHP)
- 1230 CKQR BC, Castlegar 5/26 0400 "QR" SID hrd u/KWYZ wx. (JFO\*-WA)
- 1240 KMBY CA, Monterrey s/off 0530 5/26. (bp-WA)
- 1240 KSON CA, San Diego fair w/C&W 0531 5/26. Much wanted. (bp-WA) 5/26 0554 w/ID C&W, Ai nx. Usually dominant KMBY & KROY faded out. (JFO\*-WA)
- 1240 KVNI ID, Coeur D'Alene 5/31 0100 w/s/off u/KXLE, Unid w/Ac nx. Which station looping (peaking) east is likely to have Ac nx at this time? (JFO-WA)
- 1240 KWIK ID, Pocatello fair o/u KROY & CKOO ET 0710 5/26 w/Ai nx and C&W. (bp-WA)
- 1240 \*CKOO\* BC, Osoyoos 5/26 ET ID'ed as "This is OK-double-O Radio, 1240 on your dial serving you w/mx and info. 24 hr. a day." Also gave IDs for CKOK, CKGF & CKSP. No TT. (JFO\*-WA)

- 1240 ???? ?? 6/2 0329 during promo gave ID for CKPY, CKY or CKGY, PDT TC and into "Midnight Special" rr or MOR mx pgm. Canadian Twin lists do not show stn here. Any ideas? (JFO-WA) (No idea-NH)
- 1260 KWIQ WA, Moses Lake 6/20 0000 quick ment. of call during weak s/off u/KMOM rr mx. (JFO-DX-WA)
- 1260 ???? ?? SSB s/on 0630 6/16, then Christopher Thought For The Day & "Midnight at the Oasis". S/on annct. apparently before SSB. All alone but soon faded into noise. KYA off. Ideas? (bp-WA)
- 1290 KCUB AZ, Tucson 6/16 0330 K-cub promo for rock concert. KOL off until 0600
- 1300 KOL WA, Seattle has applied (JFO-DX) for call change to KMPS, "Compass Radio" w/switch to C&W. Still rr as of 6/21. (bp-WA)
- 1310 WIFE IN, Indianapolis 6/16 0400 brief "WIFE Radio" promo caught in KNOX fade. (JFO-DX-WA)
- 1310 KNOX ND, Grand Forks 6/16 0357 nx, ID, fair strength. 1st time hrd. (JFO-DX)
- 1340 \*KBTA\* AR, Batesville a real shock w/f/c 0238-0250 5/4. Breaks for ID 0240 & 0245. Called CE & had him put breaks in tone 0243 to confirm it was them.
- 1340 KMAK CA, Fresno 6/10 0500 loud (bp-WA) ID "K-M-A-K" atop GY mess. KMEL s/off at 0300 now. (JFO-WA)
- 1340 KMEL WA, Wenatchee former NSP peat now has 0300 s/off, apparently daily. Hooray. ?? Who IDs as "Mid-Columbia" (bp) Radio, K---, 134"? KMEL or KOTY? Rcvd 6/2 0110. (NHP-BC) (KIHR!-NH)
- 1350 WSLR OH, Akron 6/16 0530 "WSLR" ID faded up thru Unid. (JFO-DX-WA)
- 1350 LPRT BC, 5/26 0324 a CBC pgm, possibly CBC Focus, hrd in passing. (JFO\*-WA)
- 1350 ???? ?? 6/16 0530 MoR or rr format, promo for \$50,000 give-away contest. Faded during K--- ID, when WSLR came in faintly w/ID. Antenna pointed eastward.
- 1430 CKFH ON, Toronto 6/9 0458 in&out (JFO-DX) of mud w/ads, IDs & nx battling w/two others, both Unid. My first ON. (NHP)
- 1440 KPRO CA, Toyland 6/1 0315 PSA for Riverside agency, K-PRO ID. CFOP s/off 0300. (JFO)
- 1440 KPUR TX, Amarillo 5/26 0629 caught ID between rr records, mixed w/KEWI. (JFO\*)
- 1450 \*KAWT\* AZ, Douglas w/f/c 0319 5/4 way u/CKSP et al. (bp-WA)
- 1470 KRBC TX, Abilene 5/26 0655 w/spot, ID, Ac nx. 0700 relig. pgm w/invitation to write to Abilene P.O. Box. (JFO\*-WA)
- 1470 KDHN TX, Dimmit 5/26 0714 w/ID, spots. When is s/on? (JFO\*-WA) (0600 local time, or LSR if earlier.-NH)
- 1480 ???? BC, 5/26 0351 Ment. of Prince George, PDT TC caught in passing. // CJCI. This is LPRT. What is call, power, location? (JFO\*-WA) (Either Fort St. James or Granisle, B.C.; 50 w; call letters not assigned at this time.-NH)
- 1540 KZAM WA, Bellevue ex-KBES, gegan using these calls either 4/28 or 4/29. (bp)
- 1550 KRGO UT, Salt Lake City 6/16 0800 s/on weak u/Unid rr, then a complete mess w/one clear ID at 0304. (NHP-BC)

Keep your eye on the deadlines stated at the beginning of the column now that we're monthly. Otherwise, your tips may take over a month to appear in WDXR. Good level of support this issue, with a lot of good tips. 73

SEE  
COLUMBUS  
OHIO'S CAPITAL

Larry Flegle - 1004 E. Pownhattan - Tampa, FL 33604  
I am writing this from MS where I'm spending 2 weeks vacation. Last I met IRCAer Mike Heppe. We had a good long conversation on DXing & equipment. I plan to see Mike's DXing station before I leave. On 6/5 I attended high school graduation of Allen Napier, Jr. Allen graduated 3rd in a class of almost 500 & has won a scholarship to college. Speaking of graduations, I rec'd my B.A. in Broadcasting from the U. of S. Florida on 6/15. (Congratulations-Brh) Not much listening done lately, however we are making some big plans for the fall months. Well, I'd better close for now. Hope to see some of you in Columbus. 73s.

Tom Sundstrom - PO Box 205 - Willingboro, NJ 08046  
No MW DX on this front, just one verie from CFCY-630-PEI. Now have my Novice amateur radio license-WN2AYA. I'd be interested in setting up skeds w/ IRCA hams who will venture into the Novice bands. A Heath DX-35 xmtr & HG-10 VFO have been added to cover 10, 15, 40, and 80 meters. Perhaps we can swap late-breaking tips, etc. 73.

David Ball - 62 Lexfield Ave.  
Downsview, Ontario, Canada M3M 1M5

Some nice late-season DX in here recently (CHTN, CJGX, etc.), see EDXR. This activity has been "spurred on" by the 75-76 Domestic Contest. It is my 1st contest, so the main objective is just to rake up as many points as possible, and simultaneously log some newbies. Best of luck to all participants; looks like a good'un. Recent veries include CHTN, CFGO, KKAAs (what a verie!), WIRE, WGRP, & WGGG. Looking forward to checking out some Maritine stations while down there the last 3 weeks of Aug. Unfortunately I won't be able to make a convention. To all, particularly contest participants, remember: Summer DX LIVES. 73.

Editor: John Zondlo

**central dx forum** 608 N. Martin  
Muncie, IN 47303

ATTENTION: In the August DXM you will find a new address for CDXF. For further details, check my report below- jz.

Mike Knitter-275 Lee Dr.-BAFB, SD 57706

Hi Dx'ers. First off, let me welcome my dad to the club, WELCOME. Now onto the business side of things. Here in SD on the 14th heard WIZM and WWWE, both new for me, both were very clear. The past 3 weeks haven't been too bad for dx'ing, however only 3 new stations logged. I've also started to tape the stations I hear, so far approximately 125 out of the 271 are taped. By the way, before I forget, also heard CJME, same day as the other two. On the issue of raising the dues, I think a questionnaire should be sent to all the members so that the opinions of all will be known to SDPC, this way the SDPC can then set the dues according to what the membership says, or at least have a place to start. Also this way, those that don't give their opinions won't have nothing to argue about when the dues are raised, or whatever. Well enuf said. By the way, make sure you members vote. (Club dues are set by the BoD, not by SDPC, Mike. By the way, please put your name and address with your report- jz)

Wayne Murphy-1411 Phyllis Ave.-Louisville, KY 40215

Hi again. CX have been crummy lately, with most DX reserved for GYs & contest loggings. Sold the SX-99 I bought from Jim Nail to a potential BCB DX'er (Charles Powell -- 6006 Whispering Hills Dr., Louisville. Send sample bulletin, HQ) but unfortunately he seems to be leaning towards SW. Jim had the best rx in town for one week, then John Harris bought an HQ-180A at a nearby hamfest. John payed a little more, but the rx had obviously been better taken care of and probably had less mileage on it. This makes a total of 6 Hammarlunds in town (two 180s, a 150 and three

129Xs). We're also trying to get a beverage set up somewhere. NRC'er John Hoogerheide in Brandenburg seems to have a nice lay of land, and we'll probably get down there before the summer's out to check it out. Will definitely be in Columbus next month, hope to meet many DX'ers there. Won't be able to make Hartford, it's just too far away. I'd like to request all who will be there to vote for LOUISVILLE as the site of the 1976 NRC convention. With a central location and an active membership, I feel we can get the job done. Good DX to all this summer, if that's possible. 73.

John Zondlo-608 N. Martin-Muncie, IN 47303

Greetings. As I mentioned at the beginning of the column, the August DXM will have a new address for me. I'll be graduating from Ball State in August, and after that I have no idea where I will be living. So I reckon you'll all have to bear with me while I get myself all together. Hope to see many of you at the Columbus convention. Randy Minnehan has some interesting things planned, so come expecting to thoroughly enjoy yourself. BCB DX around here has proven interesting, with many winter-like openings. My primary DX interest during the summer is FM-TV, which has proven to be fairly profitable so far. Well, I reckon I'll see y'all in a month or so.....

**western dx forum**

EDITOR: RICK HEALD  
17412 ROLANDO AVE.  
CASTRO VALLEY, CA  
94546

ERIC C. RITTENHOUSE-77 Linaria Wy-Menlo Park, CA 94025

Hi all! Three Forums in a year may be too much strain, but at least this will get RtH off my back for another month, hi. (Wait 'til Winter, Eric-RtH) Had a great time at BARFCAL or NORF or whatever it was o/Memorial Day weekend. I got to meet some of the people I've corresponded with and read about and in general had a lot of fun. I brought my HQ-160 and some good DX was actually logged. At 0430 PDT most of Millbrae (two dogs and a chicken-RtH) was probably awakened by my shouts of glee at ID'ing KOKY 1440 Little Rock, AR for a new state. I'll probably be attending NORBARF II (whatever) over Labour Day weekend and it already looks like it'll be good. On the issue of raising dues I am very much opposed to any cut in the number of DXM's per year. Many tips in DXM are already nearly too old to be useful and if we start skipping issues during the season much of the "hot" information will have little value as anything other than history. The necessary \$3.50 increase is really not too great if spread over an entire year. Most young members could find odd jobs in a month to pay this \$3.50 if the quality of their club is important to them. Perhaps we could have a sliding scale which would give a break to young or unemployed members. The damage that will be done by cutting the number of Bulletins is far greater than the damage that raising dues will cause. I think more people will want to be in a great club costing \$13.00 than a good club costing \$11.50. Getting back to DX it looks like the TPs have just about dropped out for the Summer, except the 1040 CC which still seems to be in every few days. I have hrd it in every month of the yr except July and that's because I never looked for it then. Summer should not be given up as a DX season. Some great catches can be made on SRS if you can stand a little static. MM 6/23 was a bonus day w/local NSP'ers KYA 1260 and KNEW 910 both off. KNEW off to 0655 letting me ID my 2nd AR stn, KARN 920 around 0615. CJVI 900 was also off all AM. On 1260 I hrd KWRH bombing in around 0727 for my 4th SD tnx to RtH's phone tip. CKXL 1140 also had one of its rare SP's but nothing other than WRVA and an un-ID'ed TTer were hrd. (I still think it was CKXL T'ing-RtH). I guess I've gone the limit again so will s/off for now and say 73 and good DX de ERC.

Greetings! At the time of this writing, I've just returned from a weekend in Yosemite & its outlying areas. In Merced, shortly before LSS, KLOK's signal was noted w/the groundwave & skywave interfering w/each other. Also, KCBQ was giving KLOK some 50kw competition, hi. KLOK puts about a .7 mv/m daytime groundwave signal into Merced. In Modesto, it's about a 1mv/m daytime groundwave signal. To my surprise while in Merced, KWIP 1580 gave me more spurious trouble than KYOS, including a strong KWIP image on 670. (Twas your rx, Bill. Double the IF frequency, or 1580-910=670 - RH). Somehow, KXRX 1500 puts out an amazingly strong skip signal during the several hrs after LSR. KXRX's strong skip signal was noted @ 0710PDT in Yosemite, roughly 100 min. after LSR. KXRX on skip still noted in @ 0800PDT fair, while in Yosemite. I think very highly of Jack London's fine attitude of his family being more important than any job! (DJ, KDWN- RH). As I explained to Rick Heald on a Memorial Day phone call, KLOK was operating on 10kw days during the week before Memorial Day. Eric G. Norberg, PD @ KEX told me that while he was in Palm Springs for KMPC business, he was amazed @ KXRX's strong skip signal. Rick Heald's reception of KMBY from AK was interesting. The verie appeared in the NRC News. (I'm still trying to figure out how that and all those DU veries got there-RH). Apparently the QSL files @ KMBY have been cleaned out since that date, since Eric while PD @ KMBY never saw the letter in the file while he was there. (That was at least 8 yrs ago-RH). Eric informed me that he's been corresponding w/the fellow who did most of the work of the NRC Pattern book, and the majority of the objections were multiple frequencies per page and lack of circles for nondirectionals. He decided to use two scales, and intends to do it again in the new edition forthcoming this year. His idea now is to make all stations 10kw & over at the smaller scale. He feels pages will be too cluttered w/big patterns at normal scale, and has a point in indicating that some important details on the pattern shape would be off the page, and thus not shown. His calculations show that a 5kw stn @ 550 should have an almost identical .5mv/m daytime coverage radius as a 50kw stn on 1580 (actually the 550 stn would go about 3 mi further, groundwave). Jim Hall, DJ for KYOS 1480 informs me that right now they're operating on about 1/3 power & 1 tower. They had a tower blow over during a storm last Winter.

MARC J STEINER-13224 S. Spinning Av-Gardena, CA 90242

Meetings and incantations to all who read this. I had no idea that I would back back so soon to the pages of the SUPERB, INCOMPARABLE WDXF. If anyone took offense to me calling KRIG Odessa, TX a "rotten pain in the drain station" it was only in jest. I am humbly sorry if I offended anyone. I have been having pretty mediocre (means lousy, hi) DX lately. I am waiting to construct my 3' spiral loop, which should help the old DX considerably. I am thinking of getting a new rx and putting the Guardian on standby. Oh, before leaving, in here, could you please define the following abbrs: AN, SP, MM (All Night, Silent Period, Monday morning-Rth). Someone might make good on a write-up of all the abbreviations used. (If not in your Kit when you joined IRCA, sheet may have been out of print, you might drop a note to HQ for a re-print-Rth). If anyone knows of some good ND, SD, KS, AR & MO stns, and how I could pull in a few, pls drop a line to the above address. Tnx much & 73. (Marc, KS-WREN 1250 MM after 0230 PDT, WIBW 580; AR-KARN 920, KOKY 1440; MO-KMOX 1120, KCMO-810; ND-all mine were TESTS or ET's; SD-KKAA 1560, in theory nulled to 95% of USA, hrd by 95% of USA, so much for theory, hi- Rth)

RICK HEALD-17412 Rolando Av-Castro Valley, CA 94546. Phone (415) 278-5032 before 2200 PDT

Howdy! Have now joined ranks of the 11% unemployed in CA. Took my vacation pay, made 10 day trip to the NW, SW WA coast to my folk's QTH, then for a long weekend in Vancouver, B.C., w/ex-IRCA Thee Donnelly, WD at CJVB 1470. Many thnx to Derek Ford for the AN MM DX session, 06/09. Amazing to hear the SAME stuff on a MM 850 mi. from my QTH!! That's like Chicago-New Orleans or NYC-Jacksonville, and logging the same things. Slight changes

such as the AN Canadians, etc. And even up there, local pest, KNBR slopping over onto XETRA. I think it's time we all pooled resources and bought a couple hours on KNBR for them to turn off their transmitter!! Parent's place would be ideal for a beverage. Top end of peninsula is 1/4 mi wide, and beverage would go from bay to ocean across salt marshes! Had about 6 phone conversations w/the Hardys, never did get to see them, though came as close as same town, though they were elsewhere at the time. Next time. Also good visit w/Bill Northam and phone call w/Astoria's Dave Williams. MM DX for 06/23 approached a MM 10 yrs ago. See EGR's comments for details, the phone system works out quite well, a la Seattle. Cx MM started out toward the EC, at 0300 WHAM was clobbering the KLOK sloop, our best indication of an EC opening, but by 0400 that was gone, and 0500, 0600 rolled by w/NO SRS s/ons, and nothing until KWYR 1260 s/on @ 0700 and like a local. Last time heard at least 8 yrs ago from Alaska. Please keep Labour Day weekend in mind, gang. Lots planned for beautiful downtown Millbrae. Should start late Saturday afternoon, wind up with a DX' pedtion MM. And we promise to have more going on this time, hi. Though the NL was relatively high this last MM, remember, compared to many areas of this country, it was really quiet for Summertime. LA catches can be had throughout the Summer, and SRS is often quite good, so DX, and let me hear from y'all. 73

Radio News for November, 1928

"Rays of Justice" Continued from last issue

of light which sought him out; his features twisted into a typical Diavolo sneer, and as clearly as if in a sub-title, the watching world read the words the thin lips shaped: "Folled again! Cur-r-rse you, Harold Dare!"

"The basis of my latest plot," said Dandy Diavolo in a public statement an hour later, as he was being swiftly transported in a cabin plane to Los Angeles, where the agents of justice awaited him, "was discovered by Hertz half a century ago, when he discovered that ultra-violet light facilitated the passage of a spark across a gap. It was later found that this was due to ionization of the air, and that the effect was intensified if waves of still higher frequency were used. In order to put the Wolf Creek line out of commission, I set up a bank of powerful X-ray tubes in the valley below a tower on the Wolf Creek line. The beams of X-rays thus projected upon the insulators ionized the air so that the high voltage easily jumped across over the insulators, which were already under severe electrical stress, as indicated by the corona. No matter how large an insulator had been placed on this tower, the current would still have broken it down. Only the long arm of coincidence saved Harold Dare, as always, from the working of my plot."

"What have you to say as to the way in which the plot was folled, Mr. Dare?" asked a reporter.

"To set at rest the fears of my public regarding the skeletons which were seen upon the tower, let me first assure them that they saw merely ordinary X-ray pictures of the linemen at work, exactly as if taken by a doctor's X-ray. The photoelectric cell used in the television responded to the X-rays from Diavolo's tubes, which, traveling on through the linemen, threw shadows upon the television field. When the lights were on, these shadows were too faint to be seen, but when the power was accidentally disconnected, they came into prominence. Let me merely remind my public that this episode reiterates the great truth taught by every Dare super-special: namely, that in the end, right will inevitably triumph over wrong, and evil-doing will receive its just punishment. The long arm of coincidence is merely the agent of justice, which, acting also through the hand of Fate, always finally catches the wrong-doer in the clutch of circumstance. This time Dandy Diavolo has gone a step too far. Retribution has overtaken him, and during the next score or more of years when he will sit in the stone cells of the penitentiary, he will have abundant time to meditate upon the truth of this statement."

A faint glow appeared about the ends of the insulators. Momentarily it grew. A tongue of light darted out from the cable, then spat across to the corona shield and vanished. A flickering halo encircled the tips of the insulators, gradually spreading into a luminous cone. Then suddenly a band of flame ripped across the gap. With a report as of a cannon, two huge insulators plunged downward. Two heavy cables swung sinuously out against the tower; two bursts of flame, a shower of drops of molten copper, and the line was dead.

"Lights!" cried Dare. From the truck which had been backed to the edge of the cliff, two huge searchlights suddenly shot long shafts of light downward into the depths of the valley below; and where two accusing fingers pointed, the world saw a group of swarthy, evil-faced men gathered about a truck almost entirely screened from view by the surrounding shrubbery. Even as they leaped to their feet, a dozen stalwart men slipped out of the darkness on all sides, guns in hand, and the benchmen looked into a circle of menacing muzzles. With one accord they raised their hands heavenward.

The operator of the television adjusted his instrument for a close-up. Upon television screens everywhere, a group of strange instruments and glass tubes of peculiar shapes were seen to cover the truck; and in the foreground glared the crook, evil features of Dandy Diavolo. He shook his fist toward the brilliant beam

AM-Radio Casts in Stereo

Baltimore

A Baltimore radio station has begun experimental AM-stereo broadcasts.

WTBR is the first U.S. radio station to broadcast in AM-stereo, already widely used in Mexico.

Reuters

May 5, 1975

San Francisco Chronicle, From: Vern Maxham San Francisco, Ca.

# DX CONTESTS --

Dr. Michel Breger, 7217 Creekside, Austin, Texas 78752.

Congratulations to the winners of last year's contest. The average showing was very good. Certificates for all the winners should be in the mail soon.

## SCAVENGER HUNT CONTEST

1st Prize	Kemper, Colorado	50.9	points
2nd Prize	Rittenhouse, Cal	46.7	points
3rd Prize	Nancy Hardy, Wa.	36.6	points
4th Prize	Bill Hardy, Wa.	35.6	points
5th Prize	Fader, N.Y.	32.0	points
(Tie)	Kramer, Ill.	32.0	points
7.	Portzer, Wa.	26.0	points
Tie	Scully, Cal.	26.0	points
9.	Wheeler, Pa.	25.1	points
10.	Abraham, Mich.	15.0	points
11.	Gill, N.Y.	14.2	points
12.	Bradley, Col.	14.0	points
13.	Hogan, Ind.	12.0	points
14.	Dildine, Va.	9.0	points
15.	Schatz, Fla.	3.0	points.

The wooden spoon goes to Ron Schatz, who didn't even enter the contest, but got 3 points for good suggestions.

## DOMESTIC/FOREIGN CONTEST

### PROFESSIONAL DIVISION

PLACE	NAME	TOTAL	DOM	FOR
1st Prize	Forth, Ill.	546	396	150
2nd Prize	Kramer, Ill.	513	448	65
3rd Prize	Abraham, Mich.	465	225	240
No Prize	Breger, Texas	330	180	150
4th Prize	Moss, Texas	322	152	170
5th Prize	Portzer, Wash.	278	168	110
6.	Mayhew, Que.	219	164	55
7.	Williams, Or.	213	63	150
8.	Sherman, Minn.	200	200	0
9.	Bill Hardy, Wa.	196	156	40
Tie	Nancy Hardy, Wa.	196	156	40
11.	Hendricks, Ill.	164	164	0
12.	Wheeler, Pa.	150	136	14
13.	Erickson, Ca.	148	140	8
14.	Hogan, Ind.	136	124	12
15.	Parsons, Ont.	132	72	60
16.	Buehler, Mo.	128	128	0
Tie	Scully, Ca.	128	108	20
18.	Godwin, Or.	86	0	86
19.	Flegle, Fla.	20	0	20
20.	Gill, N.Y.	5	5	0
21.	Moore, Mass.	4	0	4

### Special Prizes:

Best Domestic Performance: Robert Kramer, Ill.  
Best Foreign Performance: Larry Abraham, Mich.

Forth and Kramer both obtained 300 points in the domestic section before the end of the contest. For them the contest started again with the first additional station counting 1 point etc. For the 2nd 300 points they were allowed to log only daytimers or graveyarders. Furthermore, these stations should be new stations for the contest.

### AMATEUR DIVISION

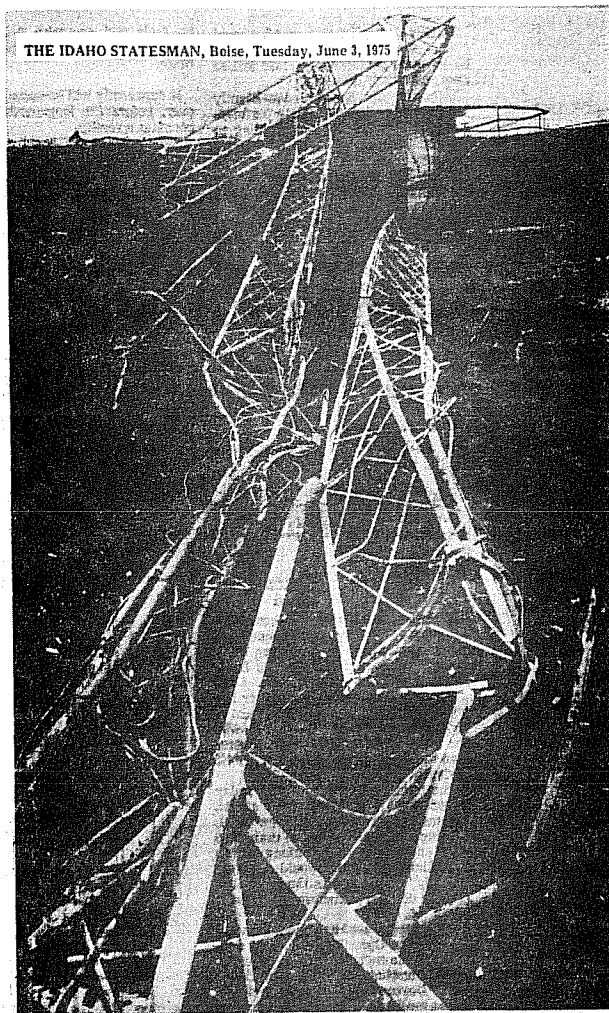
1st Prize	Rittenhouse, Ca.	492	192	300 (1)
2nd Prize	Fader, N. Y.	262	168	94
3.	Meredith, Ga.	105	105	0
4.	Bradley, Col.	88	88	0

Eric Rittenhouse submitted 45 foreign stations, which is especially impressive!

### NEW CONTESTS

No further responses for a Mexican Contest have been received. Consequently the idea is shelved. With the previous good participation in the Domestic Contests it might be possible to have regional contests, e.g. Southern Contest; only for DXers in the states bordering Mexico. Any suggestions?

see yall .....centexdx.....michel



THE IDAHO STATESMAN, Boise, Tuesday, June 3, 1975

KBOI RADIO'S FALLEN TRANSMITTER TOWER

... static electricity cut a guy wire

## By 'Backwards Lightning'

# KBOI Radio Tower Felled

One of KBOI Radio's towers crashed to the ground shortly after noon Monday at the transmitter station on South Cloverdale Road, station officials said.

The tower fell as the result of an electrical storm, although it was not actually struck by lightning, a station engineer said.

"Static electricity arced across one of the insulators and severed a guy wire," said Warren Bassford, engineer on duty at the transmitter site when the tower fell.

While it appears that lightning has struck, another engineer explained, what actually happens is that the tower acts as a lightning rod. When an electrically charged cloud passes over, the charge is drawn out of

the earth, goes up the tower and neutralizes the charge in the cloud, he said. Instead of cloud-to-ground lighting, it's ground-to-cloud.

The storm, which caused thunder to rumble around overhead during early afternoon Monday, brought with it scattered hail, heavy spells of rain and gusty winds. No other damage was reported in the Boise area.

National Weather Service officials reported that .18 of an inch of rain fell in a 45-minute period early in the afternoon. Total rain for the day was .35 of an inch.

The fallen tower, 357 feet tall, was reduced to crumpled wreckage draped across the ground and part of a building. The engineer said it caused a little damage to the building.

It was the main one of four towers. The other three, still standing, enabled the station to return to the air at 2:50 p.m., after being off the air for nearly two hours.

KBOI will be broadcasting at 10 kilowatts on a non-directional basis, Bassford said. He could give no prediction when a new tower could be obtained. He said the Salt Lake City firm which supplied the original towers is now out of business.

The weather service said the thundershowers, part of the normal weather pattern for this time of year, would continue through Monday night and taper off today. They were caused by a surge of moisture into the area.

Jack Charlton of Boise ID. reports that he talked with the CE of KBOI/670 Monday, 6-23, and that KBOI was expecting a new main tower to arrive that day. (KBOI's main tower felled in an electrical storm 6/2/75, see clipping elsewhere in DXM) The CE, Milt Daniel says KBOI is running 10 kw daytimes, (non-directional into one of the remaining three towers), and he says they have to reduce power nights to protect WMAQ. He didn't specify what power level they reduce to at night. He said they felt they would be back up to full power the first week in July. If EC members receive this in time, they might try for KBOI at 0205 EDT MM's at KBOI s/off time, with WMAQ supposedly off MM only from 0200-0600 EDT. (Info from Jack Charlton, via Bill Hardy)



**DX**  
**Worldwide**



BRUCE PORTZER,

Editor

Deadlines 6/26, 7/2h  
All times GMT

Bruce Portzer - 7021 Sand Point Way N.W., #215 - Seattle, WA 98115  
(206) 522-2521, evenings before 2200

Greetings. Conditions still seem pretty good, judging by the number of tips this time. For instance.....

**PAN AMERICAN DX ROUNDUP**

- 540 COLOMBIA, Bogotá, HJKA, 0800 3/3 fair o/u WDAK s/on w/ SS MOR & mentions of Horizonte & RCN. 8th city on 540
- 575 COSTA RICA, San José heard fairly well 0530 (Francis) 5/6 w/R. Musical ID in SS. Aurora was strong that nite & LA's were really booming in! (Rittenhouse, Calif.)
- 540 NICARAGUA, Managua, YNOW fair-poor 5/6 1020 w/Managua ment. by OM & weak but clear Corporacion ID (Rittenhouse)
- 625 COSTA RICA, San José, TIXE good w/organ mx & Omega IDs 0255 4/5 (Keeney, Kansas)
- 645 PARAGUAY, Coronel Oviedo a big surprise w/fair signal fighting through KNER \$#%# 5/6 063h w/R. Caaguazú ID. Has had carrier & occasional audio all year but never anything resembling an ID. Without a doubt my best IA ever and one of my best overall. Sounds like more than 5 kw (Rittenhouse, Calif.)
- 655 EL SALVADOR, San Salvador, YSS poor-good 0500 5/6 w/R. Nacional de El Salvador ID o/KNER garbage (Rittenhouse).
- 660 VENEZUELA, Coro, YVNA hrd 5/6 1015 w/mx pgm & Ondas de los Médanos ID u/murderous KNER slop. Wonder if KNER is a Communist anti-DXer plot?(Rittenhouse, Calif.)
- 700 COLOMBIA, Cali, HJCX, R. Sutatenza ID 1000 h/28 (Keeney)
- JAMAICA, Montego Bay, JBC poor w/EE relig pgm u/WJW/HJCX 0954 h/28. Much wanted country #30. (Keeney, Kansas)
- 710 MEXICO, Empalme, Son., XEFS, R. Amistad hrd here most evenings, often clobbering KMPC/KIRO. 75 WRTH lists them as Guaymas/250w-N, but stn gives location as near-by Empalme & pwr as 1 kw. (Korn, San Francisco)
- 760 COLOMBIA, Barranquilla, HJAJ fair w/LV de Barranquilla ID & lively SS mx. Sometimes o/WJR/GMCI 1116 5/17 (Keeney, Kansas)
- 780 HONDURAS, San Pedro Sula, HRWN fair/good o/a fading WBRN w/NA & s/on 103h h/21. IDed as R. Norte & "HRN". (Francis, Tennessee)
- 810 COLOMBIA, Bogotá, very strong o/CHOR et al during KGO SP 5/12 0908 w/SS talk & Sutatenza ments (Rittenhouse)
- 825 COSTA RICA, San Jose, TIOS surprisingly even w/WCCO w/pop mx & Titapia IDs by YL 044h h/10. (Keeney, Kansas)
- 840 PANAMA, Panama, HOLBO, R. Libertad in very well 0800 5/26 w/female ID & TC. Followed by female promo which was bracketed by an inst. recording of "I Know a Place". Taped, reported. (Korn, San Francisco)
- 850 COLOMBIA, Bogotá, HJKC 0856 5/26 or at least I figure it was them mentioning CARACOL network and with no other Colombians on the freq. (Korn, San Francisco)
- 850 URUGUAY, Montevideo, CX16, R. Carve s/on hrd 0900 5/26 o/HJKC. S/on amnt consisted of (in order) what sounded like a hymn, then "CX16 -- R. Carve de Montevideo", ment of ANDEBU, pwr as "cincuenta mil watts en antena, then rave MW & SW freqs., address, TC, 2 descending chimes, followed by a singing promo which included "Carve" at least 3 times. Really a luck-out on my part as I had no idea that stn would s/on at this time; I was only trying to get a solid ID out of HJKC at the time. My first DSA. Taped & reported. (Korn, Calif.) (Great catch! bp)
- 860 PANAMA, Chitre, HOL55 logged w/IDs as R. Reforma 1026, 1032, & 1041 5/26. (Korn, San Francisco)
- 880 CUBA, Pinar del Rio, R. Enciclopedia Nacional dominating w/piano & lite cl mx 0913 5/17. What are call letters on this one? (Keeney, Kansas) (CMAF - bp)
- 880 PERU, Lima, OBZLN, noted 6/3 w/ID sounding like R. Union at 0800, checked 6115 kHz S.W. to be sure & found they were playing the same song. (Bytheway, Seattle)
- 890 PANAMA, David, HOL81 gud o/WLS 0930 h/5 w/SS mx & ID by YL (Keeney, Kansas)
- 910 CUBA, Camaguey, GMB rose briefly above WGAF/KGLC w/NA at s/on 0930 5/18. (Francis, Tenn.)
- 945 HONDURAS, Tegucigalpa, HRYW fair-good w/piano mx 0608 h/1h (Keeney, Kansas)
- 970 MEXICO, Mexico, D.F., XEFD, R. Tres way u/WAVE/WJWV 0645-0706 5/29 w/light EE rock & that whoop-whoop-whoop-whoop IS that penetrates ORM like a TT. (Francis)
- 1005 COLOMBIA, Neiva, HJDP, R. Colocol assumed the weak SS in noise 0930 5/12 (Peterson, San Francisco)
- 1010 MEXICO, Ensenada, XRDY good 0828 6/2 w/spot for Ensenada & lively mx. Faded u/XEHL around 0835. (Bytheway, Wash.)

July 5, 1975

- 1040 BRAZIL, São Paulo, PRG2, R. Tupi fair 0650-0700 6/1 w/PP mx & ads. Good ID 0700. Not as good as Globo (Keeney)
  - 1040 COLOMBIA, Barranquilla, HJAJ hrd w/mx & male ID as R. Tropical 0925 5/11; taped. (Korn, San Francisco)
  - 1055 COLOMBIA, El Espinal, LV del Centro. HJFZ nailed down 1000 5/12, thanks to the great IRCA Foreign Log! Signal weak & much noise--summer is here! (Peterson)
  - 1070 COLOMBIA, Bogotá, HJCG, R. Santa Fe weak but largely alone in WIBC silence w/lively mx & IDs 0721-26 6/2. (Francis, Tenn.)
  - 1100 ANTIGUA, St. Johns, ZDK poor u/WJWV w/R&B 0257 5/16
  - 1180 BRAZIL, Rio de Janeiro, R. Globo w/exc. signals S-9 most of time 0849-0900 5/4 w/PP mx, ads. & mx. Many ments. of Globo. Also hrd w/very good signal 6/1 w/PP comedy 0611. S-8 signal for about 15 min. Has anybody ever verified them? (Keeney, Kansas) (I'm still waiting after 3 mos.; others have received a card - bp)
  - 1155 EL SALVADOR, La Unión, YSCF fair o/R-Slop w/pop mx 0412 6/2 (Keeney, who also submitted ZDK-1100 above)
  - 1180 CHILE, Santiago, CBL18, R. Portales excellent signal at times. Caught apparent s/on 1015 5/12 w/those very distinctive deep chimes, 3 notes in same sequence as the NBC net tones, played 3 times. Those chimes really cut the crud! Signal was pretty ragged by 1030 but great again by 1045 w/some KEX slop. ID is just "Portales". Lots of lively mx & spots during the 1000 hour. At 1103 "76 Trombones" theme mx leading into mx (nat'l & world). (I believe they call this mxcast "Revista de la Mañana" bp) Periodically hrd vibrations followed by TCs which were 2 min slow. Theme again at 1113 and ID. Did not hear chimes at any other time but s/on--prob best time to try for this (1015). Those w/KEX probs. might try SM instead of MM. Best bet for Chile. (Peterson, San Francisco) --- NBC tones pierced through the noise 1100 5/19. I guess 76 Trombones followed but wasn't clear enuf to tell! Bits of mx noted later. TODDLAR stns would also have NBC IS but don't believe they have any outlets on 1180, so likely this. (Portzer, Seattle). --- NBC tones noted during nx 1107 5/19 after tip from bp (Bytheway, Seattle).
  - 1180 COLOMBIA, Neiva, finally hrd 1012-1030 5/19 w/fair-good signal. Mostly talk w/occasional vocal mx, mention of Surcolombia at 1028:30 (Portzer, Wash.)
  - 1180 MEXICO, México, XEPR, R. Felicidad fair w/weak ORM from Globo 0830 6/1. SS MOR & TC. (Keeney, Kansas)
  - 1190 COLOMBIA, Bogotá, R. Cordillera finally hrd w/ID & chimes o/u KLIP 1002 5/25 during KEX SP. (Portzer)
  - 1265 ST. KITTS, Basseterre, R. Paradise first time noted here in the clear since March w/Sunday devotions till 0537 s/off 5/18. (Keeney, Kansas)
  - 1400 MEXICO, Ensenada, XEFP likely the SS noted 1135-1140 5/12 o/KONG. Too late for much else & XEs all over the dial by then. (Rittenhouse, San Francisco)
  - 1483 UNID SS noted w/fair-poor sig 0949-1005 5/19. Seemed to play every type of IA mx imaginable & had what sounded like an ID as R. Ensenada or Ranchinata or similar 0955. Wonder who this could be.... (Portzer, Seattle)
  - 1560 CUBA, Cárdenas, GMBB w/TCs, ticks & mx poor-fair u/KKAA 0922 h/16. That's some 250 watts! (Keeney, Kansas)
- PACIFIC DX ROUNDUP**
- 640 HAWAII, Honolulu, KORL hrd w/usual teletalk MMs h/21&28. On 7/28 KORL o/HJ w/gud signal. (Keeney, Kansas)
  - 660 NEW ZEALAND, Wellington, 2YQ, this pest assumed to be the symphonic mx looping Southwest 09h2 5/26 while DXing from Lake Cushman, h0 ml. west of Seattle. Interesting catch in that there are numerous high ridges beginning 2-3 miles to the SW. This and a reception of h2B-10h0 in July 1972 from the same spot leave me with doubts about the effects/significance of "skyline blockage" (Portzer)
  - 760 HAWAII, Honolulu, KGU?? Something hrd u/WJR/KFMB h/16 1230 w/Mor. Who is Ae mx here? h/19 1239 I thought I hrd "This is KGU" ID but replay of tape revealed nothing (Keeney, Kans.) (KFMB is the Ae sta here, per 75 Broadcasting yearbook, KGU is NBC/NBS - bp)
  - 760 NEW ZEALAND, Auckland, IYA my first DU in fairly good w/talk on inflation and/or unemployment. Taped for a solid 20 min 1040-1100. At 105h they were way on top of weak WJR. Was KGU off? I was looking for them! Got the NZBC pips u/WJR ID at 1100 5/19 (KGU s/off M1 is 1000 the last I checked - bp). Back again SM 6/1, M1 6/2. 6/1 1051 faded o/KFMB w/cl mx. Pips hrd thru Beach Boys song 1100. 6/2 1057 I woke up just in time, they were in alone w/a comedy pgm. Pips at 1100 almost blew my headphones off! Should be widely hrd in the midwest (Keeney)
  - 830 HAWAII, Honolulu, KIRI noted 0852 5/26 w/what sounded like the Dr. Demento Show u/WCCO (Korn, San Francisco) (Has to be the Dr. Demento Show, nothing else could possibly resemble it, hi - bp)
  - 840 AUSTRALIA, Rockhampton, hRK finally IDed 5/6 1200 w/ADC pips & ID in accented EE. 700 was noted poorly that

84h AM w/no other DU traces detectable. Aussie #2 IDed. GILBERT & ELLICE ISLANDS, Tarawa, VSZ1 hrd good 0820 576 w/YL in Vernacular. Wish someday I could hear this long emuf for a rpt. Always has big carrier but seldom reaches audible level. (Rittenhouse, last two)

INTERNATIONAL QSL ROUNDUP

890 COLOMBIA, Bogotá, IW de Bogotá sent brief but specific v/l & pennant in 3 weeks for h/18 reception. v/s German Tobon Martinez, Gerente. (Korn, San Francisco)

CONDITIONS were excellent to S. America & Down under, judging by the above reports, on 5/26. SA & DU reception appears to have been good at other times during May & June, also. I have some comments on this past season from a couple of people but will hold off till next time on that. In the meantime, try for some transequatorial stations: Deep South America, Australia/NZ, and subsaharan Africa. It's winter down there, you know....

Congrats to Father Jack on his new job. Grant will have a tough act to follow as FJP has done an excellent job these past two years. Another change comes at this time as we elect new club officers. My own imression of this year's election is that we aren't at each others throats this time. Hopefully, this means our candidates will stick to the main issue of how we can improve the club and not resort to mud-slinging, and that we as members will elect as leaders those who in the past have demonstrated a willingness to contribute to the club as editors, workers on club projects, etc.

Anyway, so much for the soapbox. This issue's contributors were:

- Phil BYTHEWAY, Seattle, Wash., HQ-150, SM-1
- Stephen FRANCIS, Alcoa, Tenn., Realistic TRF
- Rob KENNY, Lawrence, Kansas, HA-230, h' box loop
- Jim KORN, San Francisco, Calif., Fisher 90-T, h' spiral loop
- Art PETERSON, San Pablo, Calif., HQ-180, SM-1
- Bruce PORTZER, Seattle, Wash., HQ-180A, SM-2
- Eric RITTENHOUSE, Menlo Park, CA. HQ-160, SM-2

Till July, 73 and don't let the static getcha down.

**DX**

**Worldwide**



BRUCE PORTZER,  
Editor

Deadline 7/24  
All times GMT

Bruce Portzer - 7021 Sandpoint Way NE, #215 - Seattle, WA 98115  
Phone - (206) 522-2521, evenings until 2200 PDT

First a couple of offbeat items ---

ALASKA. Pending FCC approval, a network of 50 watt IPRTs will be built along the road to the North Slope. Not sure what the programming will be. The Seattle Times indicated they would carry CBS pgms, so maybe they'll relay KFRB-900 (ed)

INTERNATIONAL WATERS. Abie Nathan and his "Peace Ship" are still at it. Nathan applied for a permit to sail through the Suez Canal 6/5 but was turned down by the Egyptian gov't. He then tried sailing through without permission but was turned back and given a naval escort back into international waters. (Paraphrased from Seattle Times article 6/12 or so. See also Denzil Baker's 1540 rpt below).

REPORT FROM BRAZIL. Claudio Moraes, Florianopolis, Brasil sends the following:

- 550 VENEZUELA, Caracas, R. Mundial hrd here h/27 0800 and h/28 0115-0200 w/mx & TCs "hora Hundial, 10 y 1 minuto" o/u CWL, R. Colonia both times. Regular.
- 830 VENEZUELA, Los Teques, R. Sensación hrd here 5/6 0120 w/the fading of the Argentine stns w/ads & ID, "Credito Caro", "R. Sensación". Regular.
- 870 COLOMBIA, Ibagué, IW del Tolime hrd 5/4 0100 w/IRA QRM, w/mx & ads, ID's, & TOBELAR mentions. Regular.
- 860 PARAGUAY, Caacupe, R Cordillera 5/h 0100-0200 w/R. Mundial (PRA3-bp) & "Cordillera Show". Regular. (Wish they were a regular for me-bp)
- 1190 COLOMBIA, Bogotá, R. Cordillera, 5/8 0800 w/fading of R. Antártida, Buenos Aires, w/ID "somos TOBELAR, somos R Cordillera...En R. Cordillera las 3 y 5 minutos".
- 1250 HONDURAS, R. ---- w/ID 0430 5/3 w/ID & ment'd freqs 1250 5025 & FM. Nx pgm "NotiJuy" (sic) 0500-0600. (Seems to be HQ, R. Snyana, which has SW // on 6125 - bp)
- 1290 USA, Unid 5/3 0430-0600 w/talk show & 0600-0700 w/mx Regular & free on the frequency.

1350 USA, San Antonio, KOME (should be KCOR-bp). Regular in SS 5/3 0455 w/mx "Manzanillo", nx 0500, wx 0515. "La temperatura en San Antonio es de 73 grados, Unidad 87, cielo nublado".

Other stations hrd: CFGO-1440 Ottawa, July 7h, WLCY & WAOK-1380 in 7/7h. Unid R. Familiar-1050, R. Vision-1310. & R. IW de --- 1340-RCN-Colombia

REPORT FROM SOUTH AFRICA. Another country south of the Equator is heard from. Denzil Baker of Durban, S. Africa reports:

Conditions here are good but haven't really heard anything out of the ordinary. Most of the stations which can be heard here I no longer count as DX. The only thing that makes some of them special is operating times have in a few cases been altered. Haven't heard any U.S. stations lately though I expect them to come through during August/September. Somehow in this part of the world, DX seems to be best during March/April & Aug/Sept. Could be due to the equinox which occurs at that time.

- 790 SINGAPORE, R. Singapore hrd here 6/12 at 1630 w/lite mx & gud signal.
- 998 RHODESIA, Gwelo, RBG African Service noted 6/12 back on this frequency w/talk in Shona & xirt signal.
- 1000 AUSTRALIA, Perth, 6PM hrd 6/15 1430 w/commis & pop mx. Fair/gud signal w/some slight QRM.
- 1000 BRAZIL, Sao Paulo, R. Record noted 6/14 w/mx. Poor/Fair signal (time? bp)
- 1010 PHILIPPINES, location unkn, DXXX has been noted as early as 1115 recently. At close down at 1500, slogan given as "Double Ten on your Radio". Amnt at close down is given in EE & lists operations from 5 AM to 11 PM Philippine time (2300-1500 GMT) w/a pwr of 20kw. Signs off w/Philippine NA. Unable to get location due to weak signal & QRM. Not listed in WRTH. (Any ideas CAT? bp)
- 1030 PAKISTAN, Milton, R. Pakistan noted 6/12 1747 w/ID in EE & mx. Had fair signal w/QRM.
- 1210 CHINA, P.R., R. Peking noted 6/12 1809 w/nx commentary on Rhodesia or S. Africa in EE. Very weak.
- 1502 MALAGASY, Tananarive, RTM Network II hrd 6/14 at 1444 w/FF amts & songs. Gud signal. Listed in WRTH as from 1500.
- 1540 INT. WATERS, Voice of Peace hrd 6/4 at 1831 w/ID, freq amnt, pop mx. Signal hrd in S. Africa was fair-good w/fading & QRM. Broadcasting from Mediterranean, proceeding to Suez canal.
- 1546 GREAT BRITAIN, London, R. Capital hrd 6/13 at 0222 w/ pop mx & commis, weak signal.
- 1554 FRANCE, Nice, ORTF France Inter hrd 6/14 at 0226 w/ songs in FF. Gud w/QRM.

PAN AMERICAN DX ROUNDUP

- 540 MEXICO, San Luis Potosi, XEWA good w/ m & f in dialog & Mexican mx. Many IDs & "Hora Nacional" 0430 6/2 (Lobel, San Diego)
- 700 COLOMBIA, Cali, HJGX, R. Sutatenza 6/2 1030-1100 lots of talk, a little mx, & 2-note door chimes. Finally a R. Sutatenza ID & chimes in middle of song 1100. Slow fade from unreadable to fair. Mucho QRM. (Hall-Patch, B.C.)

PACIFIC DX ROUNDUP

- 660 ? UNID, 6/13 1130-1200 classical mx, EE ancr (British accent) "The Country (?) Program" at 1200. 6/14 1100-1215 nx followed by talk pgm & inst mx 1204. 6/15 1200 ments of. "stns 1, 2, 3, & 4." Who? Australia seems unlikely w/my rx & 2YC is off at 1100 according to WRTH. Strength nil to vry weak, long fades & vry poor readability. (Hall-Patch, B.C.) (2YC most likely-bp)

DOMESTIC INTERNATIONAL ROUNDUP

- 1550 CA, San Francisco, KKHI 0615-1657 6/2 w/pgm from Radio Nederland transcription service. Pgm was classical mx. After this was nx at 0650, wx & s/off. (Lobel, San Diego)

That does it for a largely foreign dominated issue this time. Thanks to the following hardy souls who braved the static:

Denzil BAKER, Durban, S. Africa - Trio 9R59DS. Super 125 ant. Nick HALL-PATCH, Victoria, B.C. - Hybrid Console rx, spiral loop Albert LOBEL, El Cajon, CA - DX-150, Sanserino loop Claudio R. MORAES, Florianopolis, Brazil

An interesting bunch. No two are from the same country! Till next month, 73 and best of summer DX.





CHARLES A. TAYLOR, Editor

939 EASTERN AVE.

INDIANAPOLIS, IN 46201

DXWW II, 28 5 July 1975 Phone: 317 638 4166; daily  
2330 to 0300 GMT, except Saturday and Sunday 1300 to  
0300 GMT.

Some time has past since updaters and latest broad-  
cast info have been presented, so much info has been  
held over. This number of DXWW II, news items are to  
be divided according to geographical regions. Your  
comments are invited. Now to news from the world of ---  
DX:

#### AFRICA

**Angola:** Radio Clube do Huambo exchanges its listed  
frequency, 1151 kHz, for 1162 kHz, after 1900 GMT (DX  
Corner, Radio RSA, 4-16, via Glenn Hauser)

**Cabinda:** Voz de Cabinda has moved from 1570 to 1586;  
power is much greater than 5 kW, and it is signing off  
later than before. Also on 1586 is Emissora da Liber-  
dade, ex-A Voz de Lunda (Richard Ginbey, on R. RSA DX  
Corner, 4-23, via Hauser)

**Republic of S. Africa:** According to Denzil Baker of  
Durban, the South African Broadcasting Corporation  
has no intention of replacing Lourenço Marques Radio  
with the Happy Days Radio mentioned in an earlier  
DXWW II. "I can only assume that Rádio Clube Moçambi-  
que and SABC will continue to co-operate after Mozam-  
bique receives its independence late next month" (i.e.  
June—ed), writes Denzil, who adds that according to  
a local newspaper, the English and Afrikaans medium  
wave service of the SABC at Capetown, Port Elizabeth,  
and Johannesburg will continue until the end of 1976.

**Swaziland:** (SWNS 5-75) According to a QSL from Swazi  
Music Radio, they use a 50 kW Continental transmitter  
on 1376 kHz. Sked is 1600-2200.

#### AMERICAS

**Brazil:** (SCDX B1328) According to a news item in a Rio  
de Janeiro paper, the Brazilian Ministry of Communica-  
tions announced that Rádio Nacional Brasil's power on  
MW (probably PRL8, 980 kHz, Brasília—ed) will be in-  
creased to 600 kW so that the station may reach the  
entire territory of Brazil, especially N. Brazil,  
where foreign broadcasts are well received, but not  
domestic ones. (Gilberto A. Santos)

**Panamá:** The 1120 station (listed WRTH 75 as R. Mon-  
tunita) is now R. Continente (R. Finland's FINN DX,  
4-22, via Hauser)

**Sint Maarten:** PJD2, V. of Sint Maarten, is now on  
1300 kHz (FINN DX, 4-22, via Glenn Hauser)

**Virgin Islands.** The construction permit for WRRR,  
1090 kHz, is to be changed to 1290 kHz. This station  
is not listed in WRTH 75. (World Radio Bulletin #46)

#### ASIA

**Cyprus:** (SCDX B1328) The low-powered Radio Bayrak II,  
listed on 1500 kHz, 500 Watts, is now on 1475 kHz.  
(Berd Bluman, Tel Aviv, Israel).

**Iraq:** R. Baghdad is being heard on 1038 kHz, with  
1000 kW beamed toward North Africa. Power may even be  
greater than a megawatt (BBC World Radio Club 4-16,  
via Glenn Hauser)  
(SCDX B1327) A new super-power station with 2000 kW  
is located in Babylon, Iraq. The transmissions are  
beamed towards N. Africa. (Bengt Ericson, Växjö,  
Sweden)

**Israel:** Resumed summer time (GMT plus 3h) on 4-20,  
which means all home services sign on and off an hour  
earlier. (Glenn Hauser)

**Malaysia, Fed. of:** According to a governmental source  
in the Philippines, who wishes to remain unidentified,  
Sandakan-1475 is being used to broadcast propaganda  
to Moslem separatist insurrectionists on the island of  
Mindanao. This transmitter is heard very clearly  
throughout the Philippines. According to the source,  
the Philippine government has taken no action to pro-  
test the broadcasts. (ed.)

**Philippines:** According to Denzil Baker of Durban, Rep.  
of S. Africa, VOA-1140 Poro Point, La Union is closing  
down at 1500 GMT. According to VOA Frequency Schedule  
J1975, the operations of this outlet have been cut  
back from 1100-1700 to 1200-1500. VOA-1140 has been  
relaying solely the Vietnamese program to Indochina.

July 5, 1975

According to List of Standard Radio Stations of the  
Telecommunications Control Bureau in Quezon City  
(Philippines), the Poro Point outlet on 1140 kHz has  
been assigned the callsign DWVA. I would like to re-  
quest anyone who can hear this outlet to check at 1500  
closedown to see of this stations is actually using  
this callsign. (ed.)

**Republic of Korea:** The shifts in frequency of HLKA-710  
reported last DX season, termed "drift", apparently are  
not drift but intentional shifts in frequency serving  
to sidestep reported attempted jamming to this station  
by the Democratic People's Republic of Korea. The  
phenomenal drift of DPRK-677 appears to be just that,  
drift. (ed.)

**Republic of Viet Nam:** Among the many changes is the  
reversion to GMT plus 7 time, matching Hanoi, rather  
than GMT plus 8, as mentioned on a newscast (Glenn  
Hauser)

#### EUROPE

**France:** (SCDX B1323) Usage of ORTF domestic AM trans-  
mitters has been revised. France Inter is being broad-  
cast on 164, 539, 1070, 1160, 1241, 1484, 1493, 1554,  
and 1594 kHz. France Culture can be heard on 602, 674,  
710, 791, 836, 863, 944, 1205, 1277, 1349, 1376, and  
1403 kHz. On weekdays the first hour of France Culture  
is devoted to the foreign workers for programmes in  
Portuguese at 0500, Arabic at 0515, Yugoslav at 0530,  
Spanish at 0540, and Turkish 0550-0600 (Jean-Paul  
Joanno, Chatou, France) (emphasis is mine, everyone  
take note, otherwise we'll be receiving a rash of  
"unIDed Portuguese, Arabic, Spanish, etc., etc"  
reports this coming DX season—ed.)

**Great Britain:** (SCDX B1323) Another local station will  
begin testing in Reading later this year on 1430 kHz  
and 97 MHz. (David Kenny) The BBC local station,  
Radio London, has got a new transmitter of 50 kW on  
1457 kHz. (Per Ericsson, Sundryberg, from a visit to  
London). Also the IBA news station in London has com-  
missioned a new transmitter on 1151 kHz. Since March 4  
it operates in parallel with the old transmitter on  
719 kHz for three months. (Per Ericsson)

#### Oceania

**Australian Off-Shore Waters:** (SWNS 5-75) According to  
a Gold Coast Mirror report, Australia will have its  
first offshore pirate by the end of the year. It will  
be aboard a 150-ton ocean-going vessel cruising "from  
Moreton Bay to the Gold Coast—outside the three-mile  
limit. Two Gold Coast businessmen are believed to be  
financing the project. The pirate station will have a  
minimal crew and the pre-recorded programs, lasting  
24 hours, will be made in Brisbane".

**Hawaii:** KIOE-1080, ex-KHAI-1090, has closed down  
(Arthur Cushen's April report via Glenn Hauser)

**New Zealand:** Of my previous relay of Cushen report on  
new university stations. The slogans given visibly in  
SCDX 3-18 are R. Bosem (or R. Bosom? strikeover); on  
950, and R. Randy on 1270. Both 100 Watts (G. Hauser).

#### CLANDESTINE

Radio Portugal has announced that two clandestine sta-  
tions are installed in Spain. One of them has commenced  
broadcasts from a place close to the Portuguese border  
on MW. The station belongs to the E.L.P., i.e. the  
Exército de Libertação Portuguesa—in English, the Por-  
tuguese Liberation Army. The address given by the sta-  
tion is P. O. Box 1134, Madrid, Spain, which is the  
same address as of Don Mariano S.A. de Sánchez Couisa,  
head of Cristo Rey in Spain

#### PUBLICATIONS

(SCDX B1328) A Portuguese-English DX Vocabulary for 7  
IRCs, and a Spanish-English DX Vocabulary for 5 IRCs,  
by airmail, are offered by Mr. B.L. Ranade, E-304, P.O.  
Dhuvaran Power Station, Gujarat, 388610, India.

The Australian Radio DX Club now changes the bulletin  
Australian DX News to offset printing. Sample copies  
obtainable from Australian Radio DX Club, P.O. Box 227,  
Box Hill, Victoria 3128, Australia

How to Listen to the World, to be published this summer  
by WRTH, has been cancelled permanently. Reasons given  
were the increase in prices for ink, paper, and print-  
ing. Some articles which had been intended for publi-  
cation in HTL 75, will be published in WRTH 76 instead.  
(ed., from newsletter received from Billboard Publi-  
cations, London, and letter from Jens M. Frost)

That about winds it up for this number of DXWW II. If anyone calls into question my association of Philip-pines with Asia rather than Oceania, be advised that I haven't ironed out country/area associations yet. Until next number of DXWW II, 73 *Charlie*

# RFS VOODOO LIST

BROADCASTING STATIONS OF HAÏTI  
Compiled by Ronald F. Schatz  
Second Edition Corrected to March 1975

660	R. Lumière	20	Port-au-Prince	relig.
720	R. Lumière	5	L'Artibonite	relig.
740	R. Lumière	5	Pignon	relig.
760	R. Lumière	5	Les Cayes	relig.
780	R. Lumière	5	Jérémie	relig.
840	R. 4VEH	10	Cap-Haitien	relig.
880	R. Nationale	0.4	Port-au-Prince	not hrd
895	R. Artibonite	1	Gonaïves	
910	R. Nouveau-Monde	10	Port-au-Prince	some SS
930	R. Variété	0.2	Gonaïves	status unk
056	R. Carillon	0.3	Port-au-Prince	
990	R. Cacique	0.3	Port-au-Prince	
1035	R. 4VEH	10	Cap-Haitien	
1080	Voix de la Révolution		Duvaliériste	temp. off
		1	Port-au-Prince	
1110	R. Citadelle	1	Cap-Haitien	
1146	R. Caraïbes	1	Port-au-Prince	
1190	La Voix de'Avé Marie		Jérémie	status unk
		0.15		
1210	R. Progrès	5	Port-au-Prince	
1250	Rdiffusion Haïtienne		Port-au-Prince	
		0.2		
1280	R. Métropole	10	Port-au-Prince	
	(FM 100 MHz)			some EE, SS
1330	R. Haïti-Inter	10	Port-au-Prince	
				some EE, SS
1385	R. Port-au-Prince	1	Port-au-Prince	
1430	M B C	1	Port-au-Prince	
1465	La Voix du Nord	0.1	Cap-Haitien	not hrd
1475	La Voix du Peuple	0.75	Port-au-Prince	not hrd
1500	R. Sélect	0.35	Port-au-Prince	relig.

Station powers are largely based on ground-wave reception conditions from Elias Piña and Monte Cristi in the Dominican Republic.

Radio Sélect (1500), reported off the air by some authorities, operates on a very limited schedule with religious programming.

Use of callsigns is extremely rare, so were not included. The majority tend to represent the owner's initials.

-30-

American Top 40 International as of June, 1974.

Copyright by Watermark, Inc.

Contributed by Eric Fader, to whom DXWW II tnx go out.

All times are local.

kHz	Station	Location	Sked codes
530	3UL	Warragul, Victoria	(7)2000,(1)1300
610	R. Guardian	Port of Spain, Trinidad	unk
640	HLKC	Seoul, R. of Korea	(7)2310
670	R. Fabulosa	Guatemala, Guatemala	(7)2015-0210
800	5RM	Riverland, S. Aust.	(7)0900
880	3YB	Warrnambool, Victoria	unk
940	2ZA	Palmerston, N. Z.	(5)2100, (1)1500
970	1ZN	Whangarei, N.Z.	unk
1050	H.K. Commcl.	Hong Kong	(1)1530
1130	2ZM	Wellington, N.Z.	(7)1400
1160	3ZC	Timaru, N.Z.	(7)2000,(2&4)1630-1800
1180	3KZ	Melbourne, Victoria	(1)1200
1200	5KA	Adelaide, S. Aust.	(7)1715
1240	1XX	Whakatane, N.Z.	unk
1250	JOTF	Sapporo, Japan	unk
1260	3SR	Shepparton, Victoria	(1)1400
1290	3XA	Christchurch, N.Z.	(1)1600

1310	1ZH	Hamilton, N.Z.	(1)0900-1000,1500-1600 1830-1930
1370	2ZP	New Plymouth, N.Z.	unk
1376	R. Swazi Mus.	Mbabane, Swaziland	(1)1400
1420	JORF R.Kanto	Yokohama, Japan	unk
1450	5AU	Spencer Gulf, S. Aust.	unk
1480	1XH	Auckland, N.Z.	(1)0600,(4)2200

Sked Code: (1)Su;(2)Mo;(4)We;(7)Sa. Time shown is opening time for program. Since program is 3 hours in duration, normally, with locally inserted spots, stations on which AT40I closing time is three hours after opening have no shown closing time. If closing time is more than three hours after opening time, due to many spots, closing time is shown after opening time.

From Charles A. Woottan, Bethesda, Maryland comes the first of what I hope will be many articles recounting DX-related adventures abroad. Thanks to Charlie!

## GIBRALTAR BROADCASTING CORPORATION

On 11 April 1973 I visited the Gibraltar Broadcasting Corporation (GBC) at Wellington Front, Gibraltar. It is housed, along with a television studio, in an old barrack edifice which once served as a powder magazine. The building dates back to about 1780, roughly the time Admiral Rooke took Gibraltar. The interior no longer resembles a store-house of war materials, but that of an efficiently-run broadcast house.

I spent a little over an hour with the Chief Engineer, Mr. T. G. Black, who pointed out the main items of interest.

Gibraltar Broadcasting, Ltd., managing agents for the GBC, is owned by one of the world's foremost millionaires, Lord Thompson of Fleet, who currently resides in London. The GBC administers the station in all policy matters.

The station enjoys the partial financial support of the government, but the government has no controlling interest in the station in any form. The remaining support comes from the community in the form of limited advertising, and the revenue gleaned from the licensing of all radio and TV receivers within Gibraltar. There is little industry in Gib, so the advertising must come from the larger businesses, of which there are not many. The multitudinous smaller businesses have not yet fully realized the need to advertise on a national scale, probably due to the size of Gibraltar.

The output of the radio and television is partly home originated. In other words, a large amount of programming is centred around local events, such as children's programs, talk shows, and an occasional band. The news items are mainly compiled from the BBC World Service.

The main radio studio soundproof control rooms have homebrew consoles which remote control the turntable, four EMI transcoders, and the keying control lines to the transmitters. Also accessible are two AR-88 MF receivers and a newer Redifon R-145 receiver, from which the latest in world events is gleaned, plus an off-the-air monitor.

There are two 15-year-old Redifon G176 transmitters and one Redifon G78 2kW transmitter located in the same building, of which two are on standby. The power output on this frequency of 1484 kHz varies from 0.5 to 1 kW depending on requirements at the time. The antenna is a 130-foot mast, non-directional, located atop the building.

The hours of the station are from 0700-2300 GMT. The Chief Engineer will be glad to accept reception reports, providing they are accurate and true, plus answer any queries concerning this station.

Survey Collectors Although I do not actively collect surveys, there are many ICAers that do. An ex-member Jerry Peterson wandered into HQ a couple of weeks back, brought by the Rock Guide we ran. He would be interested in hearing from SCers as he has many "traders." His address is: 14616 Fairburn St., Poway, CA 92064. He is with KCB here.

# CONVENTION '75!

July 5, 1975

International Radio Club of America  
 Convention Registration Form  
 8, 9, 10 August 1975, Columbus, Ohio

1975 IRCA Convention  
 Columbus, Ohio

This registration form must be used (or photocopy) by all who wish to attend. This form will also assure hotel reservations with the Neil House in downtown Columbus.

Name: \_\_\_\_\_

Address: \_\_\_\_\_

Mode of arrival: \_\_\_ car \_\_\_ plane \_\_\_ bus \_\_\_ train

Date of arrival: \_\_\_\_\_ Date leaving: \_\_\_\_\_

Room preference (please cheque one):

- \_\_\_ 1 person (single bed).....\$18.00 per person
- \_\_\_ 1 person (double bed).....\$24.00 per person
- \_\_\_ 2 persons (2 single beds)...\$13.00 per person
- \_\_\_ 2 persons (1 double bed)...\$13.00 per person
- \_\_\_ 3 or 4 persons (dorm style)\$ 8.00 per person

Number of days staying at hotel: \_\_\_\_\_

We will handle room placement unless otherwise requested. If you have a roommate (wife, friends, etc.), please list:

Banquet entrees selection (please cheque one):

- \_\_\_ Roast half chicken
- \_\_\_ Roast young tom turkey
- \_\_\_ Baked sugar cured ham, w/fruit sauce
- \_\_\_ Roast loin of pork
- \_\_\_ Braised beef steak, swiss style
- \_\_\_ Boned breast of chicken, cordon bleu

Only one of the above entrees will be served to the whole group... the most popular choice will be the banquet entrees.

If you wish not to attend the banquet, please cheque this box and a refund will be sent to you.

The entrees selection above includes an already chosen appetizer, two vegetables, salad and dessert.

Payment for the convention registration and banquet must be made in advance, and must accompany this form. The fee is \$10.00; please make cheques and money orders out to the "IRCA Convention Committee", and mail with this form to:

Randy V. Minnehan  
 P. O. Box 3212 (O.S.U.)  
 Columbus, OH 43210

Deadline for registration is Saturday, 2 August '75. If there are any problems or questions, please feel free to write Randy, or phone anytime between 7 pm and midnight EDT at (614) 279-4342. Confirmations of registration fees and room reservations will be sent.

Please do not make room reservations on your own... these are special rates and your room will cost less by letting us handle the arrangements.

Signature: \_\_\_\_\_

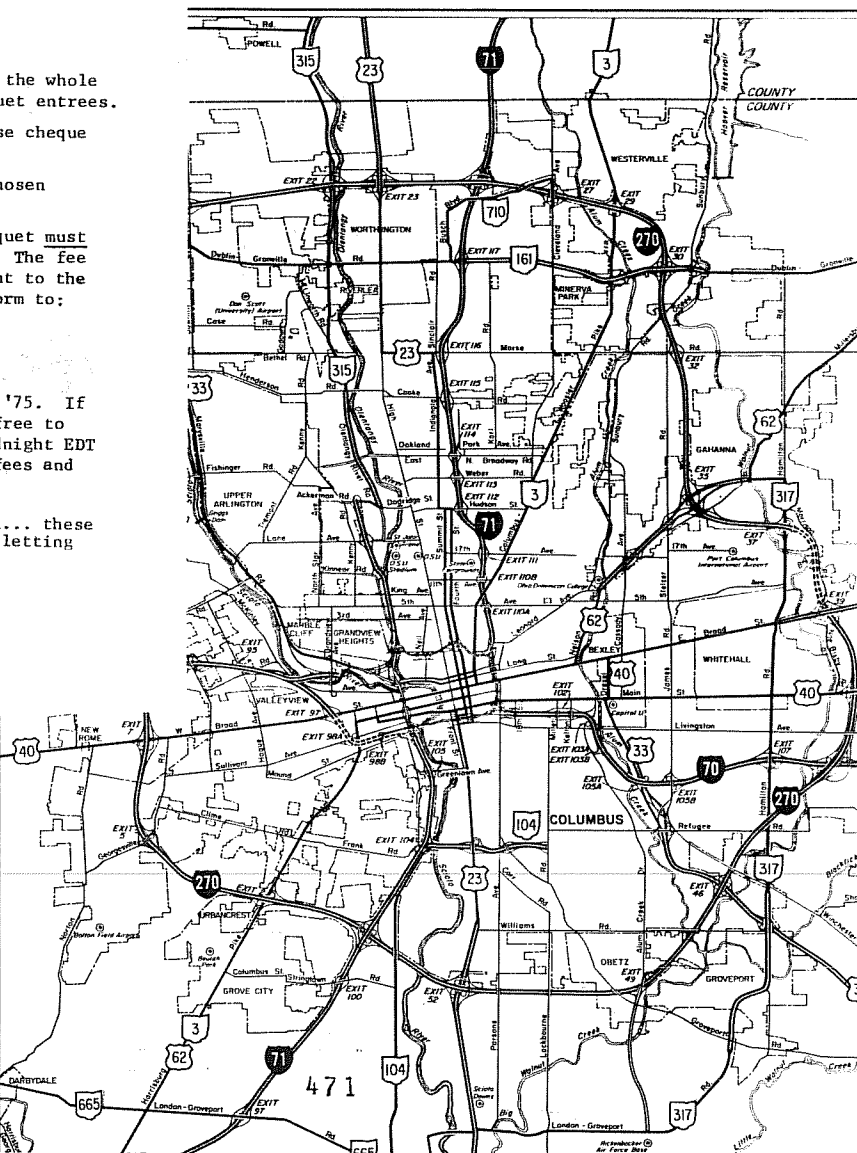
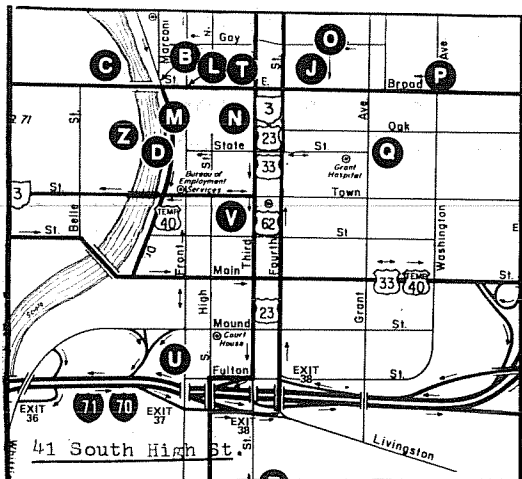
Date: \_\_\_\_\_

The 1975 IRCA annual convention will be held this 8, 9, 10 August '75 at the Neil House Hotel in downtown Columbus, Ohio. Now is the time to make plans to attend this big DX get-together in central Ohio. Some of the top names in DX-ing will be attending, and due to the large concentration of DXers in this region, this Columbus convention promises to be one of the largest DX conventions yet! Several DX seminars are being drawn up, and it will be a fun filled busy weekend for all. I'm sure all those who have attended a past IRCA convention will agree that these get-togethers are simply fantastic. At last you will get to meet the faces behind the names you see in the **DXM**.

Anyone with items for the annual auction who will not be attending, please send them directly to Randy Minnehan. This convention is open to everyone, so bring your local DX friends along!

See you in August!

*Randy V. Minnehan*  
 P.O. Box 3212 (O.S.U.)  
 Columbus, OH 43210



# Sale of WLW marks end to broadcasting era

The sale of WLW-T, the "For Sale" sign on WLW radio and the liquidation of Avco Broadcasting, (nee Crosley) came as a bitter, heartbreaking blow to me when the sad news was announced on Monday.

I sensed that the hand writing was on the wall when Avco sold the Indianapolis and Columbus stations, but I had hoped against hope that it wouldn't be the total wipe-out of the country's oldest, and greatest regional broadcasting company.

**THANK GOD**, Powel Crosley Jr., James D. Shouse and Robert Dunville didn't live to see the monumental work they did in building Crosley Broadcasting go down the drain because Avco Corporation, which bought Crosley, decided to get out of the broadcasting business.

From 1922, when Powel Crosley Jr. put WLW on the air, Crosley Broadcasting made broadcasting history, beginning with its 50,000-watt, clear channel station. At one time, WLW's signal blanketed the world with 500,000 watts, experimentally. Peter Grant and "Moon River" went to the ends of the earth.

**WLW FED PROGRAMS** to NBC's Blue Network (later ABC) back in the '30s and '40s and some of the most famous names in radio aired shows from the Arlington Street studios—Red Barber, Ramona, Eddie Albert, Virginia Payne, Red Skelton, Little Jack Little, The Mills Brothers, The Williams Brothers with little Andy, Durward Kirby, Lula Belle and Scotty and Smilin' Ed McConnell.

Did you know that the soap operas started on WLW when P&G wanted to find out if continuing stories on radio would sell soap? That's why they're called soap operas.

WLW was the most powerful and popular radio station in the Midwest, so when television came along Jim Shouse and Bob Dunville set out to cover the same Midwest area on TV. To that end, Crosley Broadcasting built four TV stations—V Cincinnati (1948) followed by Dayton, Columbus and Indianapolis—to duplicate WLW's mid-west coverage.

**WITH WLW-T** as its Flagship station, Crosley Broadcasting began a regional network with Ruth Lyons's "50-50 Club." Later came "The Paul Dixon Show" and both were gold mines for Crosley. Paul's death was a sad blow to Avco, but Bob Braun took over "50-50 Club" when Ruth retired and the

show remains the top-rated regional daytime show in TV.

John T. Murphy, who has headed Avco Broadcasting since the demise of Shouse and Dunville, is a top-notch broadcasting executive and has expanded the regional network's news, public affairs and programming, adding such personalities as Phil Donahue to the roster. He has seen to it that his stations offered highquality broadcasting on all levels. I hope John continues in local broadcasting.

The breakup of this truly great Midwest TV and radio combine marks the end of 53 years of broadcasting history, over a half-century in which radio and TV have become so much a part of our lives.

I don't know what changes will come about now that this era has ended, but I salute the men and women who contributed so much over the years to Crosley-Avco Broadcasting.

**THE BROADCASTING** company which has bought WLW-T is Multimedia Broadcasting Co., of Greenville, S.C., which operates TV stations in Greenville, N. C., Knoxville, Tenn., Macon, Ga., and Winston-Salem.

I was curious as to the kind of TV operation run by Multimedia so I phoned my friend, Frank Weirich, TV editor of the Knoxville News-Sentinel, to ask him.

"Multimedia operates Knoxville's WBIR-TV, a CBS affiliate, which is the No. 2 TV station in Knoxville," said Frank. "They do a good job for a country town, but very little local programming except for news, public affairs, a movie and a morning hillbilly show. Mostly the station airs network programming."

The Cincinnati Post, Wednesday, June 11, 1975



By Mary Wood

472

## the AD-VISOR

247 N. FIRST ST., APT. 27

EL CAJON

CA 92021

ALBERT S. LOBEL, Editor

**COLDLINE:** (714) 440-2544 (How can red be cold?)

Latest on your editor's proposed move is that it may not be afterall; chances of employment have greatly improved here. If I don't move there will still be an address change as I will be getting a post office box. **WATCH FOR MORE DETAILS!**

## TRADE!

WBHP bumper stickers. Yours for another bumper sticker in trade. Only 15 to trade! (TB)

## sale!

QST magazines, 1940 - 1975, \$50.00. Must be picked up in Hammond, IN vicinity. Or will donate to licensed ham radio club; pick up only. (DEE)

Two transistor antenna amplifier. Can be used on most any loop antenna. Needs some work, no schematic is included. **PRICE:** \$3.00, includes shipment with-in the U.S.; add 50¢ for shipment to Canada (no checks please). A really great deal -- cost me \$12.50 when new. Just have no use for it anymore. (ASL) **REDUCED AGAIN!**

WHERE SELLER AND BUYER MEET

(TB) Tom Butas, 5612 Alta Dena Drive, Huntsville AL 35802

(DEE) Donald E. Erickson, 6059 Essex Street, Riverside CA 92504.

(ASL) **YOUR GREAT EDITOR.** ADDRESS AND COLDLINE ABOVE!



### THE INTERNATIONAL RADIO CLUB OF AMERICA

A non-profit club devoted to listening to distant radio stations on the broadcast band (525-1610 kHz)

IRCA is a member of ANARC, the Association of North American Radio Clubs.

**OFFICERS:** President: Richard C. Evans, Box 392, New Buffalo, MI 49117 (616-469-3866). Secretary-Treasurer: Carl Dabelstein, 3300 N. 56th St., Lincoln, NE 68507. Board of Directors: Father Jack Pejza (Chairman), Bob Foxworth, Nancy Hardy, Percy Kesteven, Ed Krejny, Bill Nittler, John Zondlo.

**DX MONITOR:** The official magazine of IRCA, published 34 times a year; weekly from November to March, 3 times in October, semi-monthly in April, May and September, and monthly in June, July and August.

**MEMBERSHIP AND SUBSCRIPTION RATES:** Membership only, \$2.00 per year. Membership and Subscription, \$9.50 per year. Airmail to U.S. and CANADA, \$13.00; to CENTRAL and SOUTH AMERICA, \$20.00; to EUROPE and AFRICA, \$25.00; to OCEANIA and ASIA, \$30.00. Sample copies, 50¢ or 2 International Reply Coupons. Make all checks and money orders payable to "IRCA." Members outside the U.S. use Canadian Postal Money Orders or International Money Orders payable in U.S. funds. Send all funds for membership, subscriptions, as well as changes of address to Poway address.

**PUBLISHING STAFF:** Executive Editor: Publisher: Grant Manning (714-566-1264). Albert Lobel, Randy Seaver, Dave Stroup, Fred McClelland.

Permission is granted to publish, broadcast, or otherwise reproduce any of the material in DX MONITOR (except for items which acknowledge that they appear by permission from other sources, or material which is copyrighted), providing credit is given to DX MONITOR and the author or contributor if listed.

Opinions appearing in DX FORUMS are those of the contributors and do not necessarily reflect those of IRCA, the publishing staff, or the DX FORUM Editors.

IRCA publishes the IRCA Foreign Logs, listing over 1500 foreign stations heard on the BCB from North America. Vol. 3, \$3.50; Vol. 2 and 3, \$5.25; all three volumes, \$6.75. IRCA also has an extensive list of reprints of articles and other features which have appeared in DX MONITOR over the years. Send a self-addressed, stamped envelope to the Poway address for a copy of the list. IRCA stationery: 70 sheets for \$2.00; 100 for \$2.75. Rubber stamp of IRCA emblem, \$3.00.

# IRCA

INTERNATIONAL



RADIO CLUB

International Radio Club of America  
12536 Arabian Way, Poway, CA 92064

ADDRESS CORRECTION REQUESTED



Dave Williams 17A  
Box 615, Hwy. 101  
Astoria, OR 97103

USAirmail