



DX Monitor

Devoted Exclusively to
Broadcast Band DXing

February 20, 1982

Volume 19, Number 23

Issue Number 610

In This Issue

The IRCA Technical Column	2	History of KP0J-Portland	14
Graveyard DX Records	5	Central DX Roundup	15
Sports Networks	6	Eastern DX Roundup	16
Eastern DX Forum	10	DX Worldwide West	17
Western DX Forum	??	DX Worldwide East	??
Western DX Roundup	12	Mexican List Updater	19

No sign of Western DX Forum or DXWW-East as of press time, possibly because of the 2/15 postal holiday. I may slip one or both into the bulletin before I run it over to the printer's, so don't be surprised if the above table of contents doesn't quite match what's inside....

DX Calendar

Mon Mar 1 WHND-560, Monroe, MI, will test 0300-0400 EST w/any or all of the following: mx, TTs, tone sweeps, tapes of continuous IDs, jingles. Will be nondirectional 0300-0320, silent 0320-0330, directional NNE 0330-0400. Positive details will be required for verification. Send reports to Fred R. Vobbe, WHND Transmitter Site, 5305 Vineyard, Monroe, MI 48161. Arranged by Frank Merrill.

What's Happening?

Lots of things happening this week, such as.....

CONTEST WINNERS

Congratulations to Bill Harms, who won the clear channel daytimers contest, and Randy Tomer, who won the graveyard stations contest. Bill reported 37 daytimers on clear channel frequencies in the December and January issues (most of them from Spokane); honorable mention in this contest goes to Lee Groves w/28 stns, Jim Albrecht w/27, Don Kaskey w/18, and Robert Kramer and Todd Skaine w/15 each. Randy reported a total of 18 graveyard channel stns during this period, beating out runner-ups Bill Harms w/11 and Rboert Wien w/8. As an interesting sidelight, most of the clear channel daytimers were reported by eastern and midwest DXers, while most of the graveyarders were reported by west coast DXers.

1982 WORLD RADIO TV HANDBOOK

The 1982 WRTVH is now out. Those who placed prepublication orders through Don Erickson should have theirs by now. Don has also put out a catalog for his Century Print Shop, featuring publications from various DX clubs, the ARRL, Tab Books, Sams, etc., most of them dealing with DXing or electronics. If you don't have a copy, send an SASE to Don at 6059 Essex Street, Riverside, CA 92504-1599.

PEN PAL WANTED

A 16 year old Finnish DX listener would like DX penpals from the U.S. He is interested in MW & SW DXing and uses a Kenwood R-1000. His address is: Mr. Raimo Makela, Outokummuntie 55 L, 28330 Pori 33, Finland.

MORE HALF PAGE ARTICLES WANTED

Thanks to all of you who have written short ($\frac{1}{2}$ page or so) articles for use as filler material. They've been interesting and useful. We always have a need for such things to slip into these hallowed pages, so any short articles on stations, receivers, book reviews, DXing (domestic or foreign), etc. are greatly appreciated. Likewise, interesting and timely newspaper articles are appreciated here and many of them even make it into DX Monitor.



the irca technical column

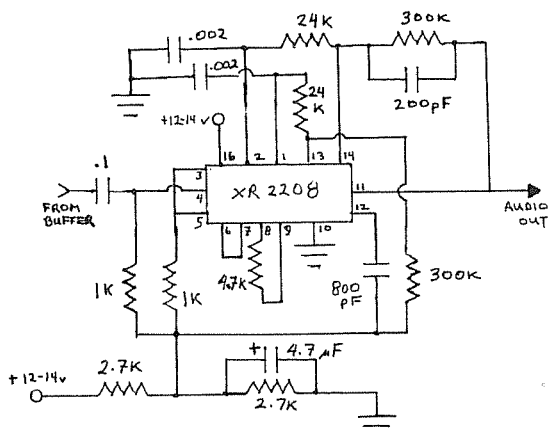
Editor: Nick Hall-Patch
1538 Amphion St.
Victoria, B.C. V8R 4Z6
Canada

MORE SYNCHRONOUS AM DETECTORS

Some time back in this column (DXM #554, Aug 10/80; also reprinted in A DXer's Technical Guide, pp 85-87), a device known as a "Phase-locked loop (PLL) synchronous detector" was described. For the basics of synchronous detection, please refer to that article. Unfortunately, just as it was written, Signetics stopped producing the NE-561 IC that was used in the sample circuit. So far as I know, there is now no way to build a PLL synchronous detector using just one IC.* There is, however, another type of synchronous detector which uses just one IC, but it does not use a PLL.

Put simply, synchronous AM detection is the combining in a mixer of the desired AM signal with a waveform which is the same frequency and phase as the incoming AM carrier. Among the mixing products will be the audio

with which the AM carrier was modulated back at the transmitter. After suitable filtering, this audio can then be fed to amplifiers to drive headphones or a speaker. In the first synchronous detector to be described here (see left), there is no external signal generated to simulate the AM carrier. Instead, the signal is developed within the IC, an XR2208 multiplier. In this IC, signal fed to either input can be amplified (amount of amplification is determined by external resistors for each channel), then combined. The AM signal from the IF amp is fed to both sections of the IC; one section is operated in the linear mode (determined by

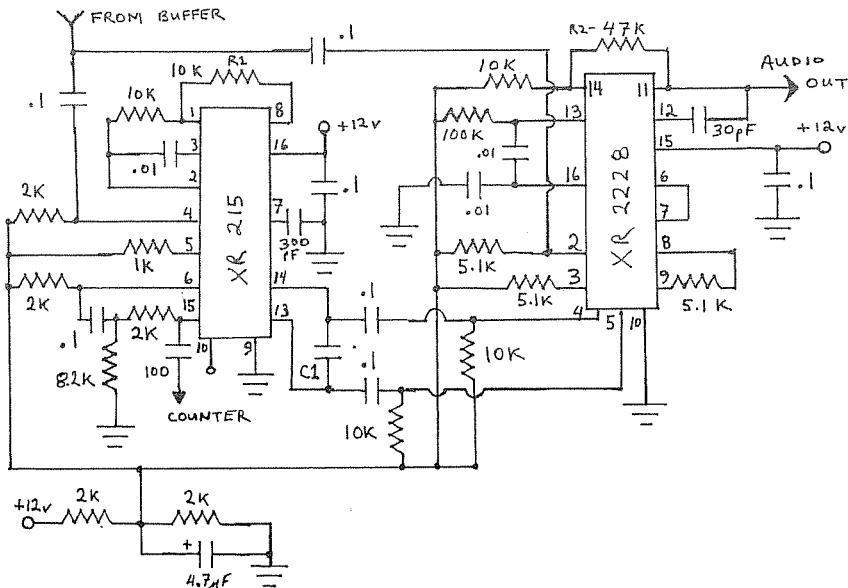


the 4.7 k resistor between pins 8 and 9), but the other section terminals (pins 6 and 7) are shorted together which causes the incoming AM signal to be amplified so much that it is limited (its peaks are chopped off). All this amplification results in a waveform which approximates the carrier in frequency and phase. The waveform is mixed with the AM signal to produce the desired audio. The IC also contains an op-amp, but its principal purpose is to convert the multiplier's differential output to the single ended output needed to drive most audio amps. Incidentally, this circuit is quite similar in principle to the "synchrophase" AM detector used in the Drake R7. Also, the XR2228 IC used below can be used instead of the XR2208 in this circuit; see the XR2228 data sheet for the different pin-out needed.

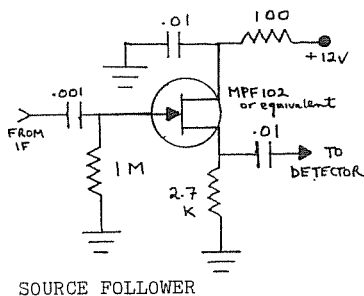
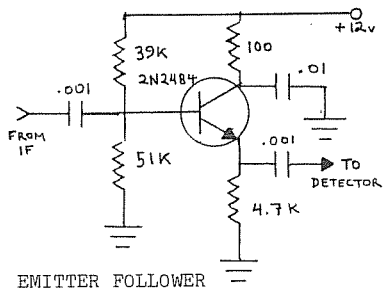
The next circuit (see below) is the XR215/XR2228 PLL synchronous detector from Exar data sheets, as built by E.H. Grossman some time ago. This uses the same principle as the NE561 circuit, and is quite a bit more forgiving of poor AGC in the receiver than the XR2208 circuit. The XR215 phase locked loop IC locks onto the signal carrier from the receiver's IF output. In this IC, the voltage controlled oscillator (VCO) free running frequency is determined by C1. A 470 pF capacitor will put the VCO pretty close to 455 kHz. If you need to decrease the free running frequency, add capacitance to C1 (use a trimmer in parallel). If you need to increase the frequency, put a 10 k trimpot between pin 10 and ground, and adjust this for the desired frequency. This circuit has quite a wide capture range, at least 420-480 kHz, so fine adjustment may not be necessary. On the other hand, you may find that fine-tuning the VCO frequency results in better handling of a wide range of signal strengths by this circuit; the PLL will be less likely to unlock on weak signals. If you have a frequency counter, the VCO's frequency of operation can be sampled at pin 15. Even without a counter however, you will probably know when the PLL locks up with the carrier, as the signal strength of the demodulated audio increases

considerably and becomes clearer. FM demodulation is available (through a suitable low pass filter) at pin 8 if you're liable to be receiving such broadcasts, and R1 can be increased up to 100 k for greater audio output.

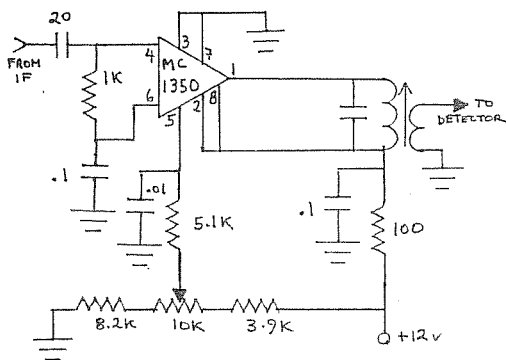
The output from the PLL is taken from across the timing capacitor C1 and applied to pins 4 and 5 of the XR2228 multiplier IC, while the desired AM signal is applied at pin 2. The signals are amplified and mixed and the resulting audio from pin 16 is filtered and amplified in an op-amp in the IC. R2 can be varied from 10-100 k to provide some audio gain control for the demodulated AM available at pin 11. The XR215, XR2228 and XR2208 are all available from Ancrona, P.O. Box 2208, Culver City, CA 90230. The prices are in the 3 to 5 dollar range each, and the company has a minimum \$10 order with \$2 shipping and handling.



The input signal to these detectors comes from the last transformer of your receiver's IF stage; note that your receiver must have a separate envelope detector and IF amplifier in order to use the detector circuits. If you are using a transistorized receiver, the secondary of the last IF transformer is usually untuned and could be connected directly to the input of the synchronous detector. It's better however to use a buffer amplifier between the two to avoid loading down the IF transformer, and to allow continued use of the receiver's envelope detector. An emitter follower, as shown below, will act fine as a buffer (circuit from Phil Bytheway). The buffer should be mounted close to the IF transformer, and could be powered from the receiver. In vacuum-tube type receivers, the final IF transformer usually has a tuned secondary and is of much higher impedance than the IF secondary of transistorized receivers. A source (FET) or cathode (tube) follower would be the circuit to use here to avoid loading down the IF transformer. A sample FET circuit is below.



If you're not happy with the idea of adding another circuit to your receiver innards, simply attach a 20 pF capacitor between the top of the IF transformer secondary and a jack at the back of the receiver--use minimal distance between capacitor and transformer, shielded wire between the capacitor and jack. Then build an amplifier using the MC1350 IC as



shown at left. This amplifier has plenty of gain (so wire it carefully) but it makes up for the weak signal available through the 20 pF cap. The output transformer in this circuit could be a J.W. Miller 8812, although Ambit International in the U.K. has similar transformers costing a lot less. The 10 k potentiometer is a gain control, as this amplifier will limit if run wide open. When the amp is connected between the receiver's IF and the synchronous detector, adjust this control for best sounding audio on weak signals. If your receiver has really good AGC action, then this control could be a trimpot, and just be set

once. If your receiver AGC effect is mainly on stronger signals, then the gain control of this amp will have to be a front panel one, as some variation may be needed from signal to signal.

A word here about AGC. For best results with synchronous detectors I feel that a receiver should have a fast AGC (both attack and decay) that is effective on weak signals as well as strong. I suspect that many cheaper receivers don't really meet these standards. With the XR2208 detector, poor AGC action will be evidenced by sudden drops in signal strength during a fade, or disappearance of the signal altogether for brief periods (when the envelope detector would show a noise or splatter burst, for example). In the XR215/2228 circuit, bouts of reduced signal strength or a scratchy sounding het indicates that the PLL is not staying locked in. That would show that the receiver doesn't have a steady enough IF output signal strength due to poor AGC action. This is particularly annoying when trying to log a station with a fast strong SAH on it. The PLL could unlock every time the SAH bottoms out, reducing readability. Generally, fine tuning of the VCO free-running frequency in the XR215/2228 circuit will compensate for all but the poorest AGC systems, however. A possible solution to a weak AGC could be to use the MC1350 buffer amplifier above and apply AGC to it. I've read that the MC1330 detector IC can provide AGC for the MC1350, but don't know how effective it is, nor have I seen a sample circuit. If anyone knows of such a circuit, please let me know. There is an AGC circuit for the MC1350 in Solid State Design for the Radio Amateur from the ARRL, but it's fairly complex.

After all this, what sort of improvement can be expected in the readability of your DX signals? First, it must be noted that synchronous detectors are not a cure-all for receiver ills; they won't compensate for poor receiver sensitivity, signal handling or AGC; there may be an apparent selectivity improvement, but this is of the same order as a low-pass audio filter. However, a signal which is near the noise level can become more readable using these detectors. Signals suffering from phase distortion (which render distorted audio using envelope detectors) can also become clearer; on MW such signals are generally ones which arrive at your antenna via both skywave and groundwave. Phase distortion is much more common on SW, and though not a SW DXer, I have found that some SW broadcasts become less distorted when a synchronous detector is used. It seems that good receiver AGC is particularly important when demodulating phase distorted signals.

However, if a weak or phase distorted signal suffers from noise bursts such as sideband splatter or electrical storm noise, the synchronous detector won't sound much better than an envelope detector. Unfortunately, my major interference on MW is splatter covering up DX signals, so the detector can't often work to best advantage. In some cases, sideband noise is dulled a bit by the detector, but generally bursts of splatter serve only to throw the PLL out of lock for a split second. I did once manage to dig out KIKI-830 from under some strong local electrical noise, while the envelope

detector showed mostly noise. The synchronous detector seems to work best on continuous amplitude noise interference, preferably of a low level, such as background atmospheric noise, though it seems rare now that a weak signal has only the atmospheric noise level to contend with, without splatter or local electrical noise also.

I don't feel that everyone should replace the envelope detector in his receiver (though with decent AGC the synchronous detector does everything the envelope detector does), but for tight spots it may be useful to be able to switch in a synchronous detector to see if you can get enough extra readability for an ID on a weak DX signal. Running the envelope detector output to one channel, and the synchronous detector to another channel of a stereo amp yields quite a depth to the desired signal also.

Incidentally, Derek Claridge has tried using the XR215/2228 circuit tapped off the emitter of Q24 in his R1000 and feels that exalted carrier technique using the receiver's BFO gives as good a result if not better. With my homebrew equipment, I haven't found this to be the case however. In conclusion, if you're an avid experimenter with a reasonable receiver, try the synchronous AM detector and see what it can do for your DX, and let us know the results. Bi-aural reception (upper sideband to one audio channel, lower sideband to another) is possible with a more complex synchronous detector circuit, but I don't know when I'll find the time for that!

* from Sheldon Remington comes this late word: "Larry Magne announced 1-3-82 on R. Canada International that a new IC chip is expected shortly which will be a self-contained PLL synchronous detector designed specifically for AM signals. No other info was given, however."

---looks like the technical column has had another success in influencing IC manufacturers. Rule: anything said about IC's in the technical column will shortly be proved wrong by an IC manufacturer. Plenty more stuff on hand for the column--enough for another receiver issue at least, I would think. Wait for it.-----73, NHP

Late word: Those who have seen Chuck Hutton's article on digital readout for the TRF in the Jan. 11/82 DX News may be wondering where to get the MM5430 chip. Jim Hill, 3801 Palos Verdes Drive North, Palos Verdes Estates, CA 90274 has found a source, but there's a minimum order of five IC's. The price is \$7.50 plus sales tax and any postage needed for each chip. If you want to help Jim make up the necessary minimum, write to him at the above address. He says he can get the 2N3819 also needed in the circuit for 80¢ plus tax.

GRAVEYARD RECORDS Editor: Mark Strickert, PO Box 931, San Francisco CA 94101-0931

Hello! I am the new editor of "Graveyard Records". With luck, I should at least try to be nearly as competent at previous editor Miel Wolfish was. I've typed and edited columns for several DX clubs in the last 3 years, but this is my first for a "major" club.

A brief background on "What it's all about": GRAVEYARD RECORDS lists each station on the "Graveyard", or Local Service frequencies (1230, 1240, 1340, 1400, 1450, 1490) and the DXer who has reported hearing each from the farthest distance from each station's transmitter.

In the first columns, I will list each station's record holder from the information on hand here now, that being what Mr. Wolfish received and forwarded to Seattle. I figure that, for the most part, the records would be current through 1/81. After running lists for all 6 frequencies, this column will begin running records for all receptions from 1/1/81 or later, and also, separately, any older records not reported by the time that frequency is run. Thus, it's a good idea to send older loggings in now. First deadlines for the new set of records will be announced after a regular "rhythm" of columns is established. Hopefully, all this will attract a little more interest, especially with younger and/or less veteran DXers.

In sending in potential records, please send in this fashion: Each logging in order by frequency, state and city; what you approximate the distance to be; date of reception; location reception was made from. Also, if known, give your latitude & longitude co-ordinates, or your distance & direction from nearest fair-sized city (Aha--my World Almanac would be good for something, hi). If you do not choose to send in every logging from each frequency, please also send your total heard, and also taped and/or verified if you wish, for each graveyard frequency from each major DXing location used.

Until a less gruesome apartment is found, the schedule will be a bit erratic, tho the "new" listings should be showing by November. In the meantime, the "old" 1230 will show in 3-4 weeks, and 1240 not long after, and so on. Please do send any comments/ideas/suggestions/etc. to the above PO Box. Thank You!! 73 & Good GY from where conditions are truly dead...

Sports Networks

Dave Yocis
190 McDonel - MSU
East Lansing MI 48825

My apologies for not getting this out sooner - hope this info is still current enough for you.

SYMBOLS: *-Daytimer. &-Daytimer w/CP for fulltime. #-Specified Hours
 +-AM/PM Simulcast Flagship stations are underlined.

NATIONAL BASKETBALL ASSOCIATION

We do not have complete information for the following teams: Atlanta, Denver, Houston, Los Angeles, Milwaukee, Portland, San Antonio, and Utah. I'm currently trying to get full network lists out of these people - I'll pass along any success.

ATLANTA HAWKS Chet Wright.

750 WSB--GA			
BOSTON CELTICS Johnny Most, Rick Weitzman.			
550 WDEV-VT	930 WNNH-NH	1270 WSPR-MA	1410 WPOP-CT
610 WIOD-FL	970 WYNZ-ME	1280 WABK-ME*	1440 WFTQ-MA
WGIR-NH	1230 WINP-CT	WEIM-MA	1450 WOXC-ME
630 WPRO-RI	1240 WHAT-MA	1290 WKNE-NH	1480 WTHI-IN
680 WRKO-MA	WPTN-NH	1340 WBRK-MA	WSAR-MA
910 WABI-ME	1250 WARE-MA	1380 WBBX-NH	1490 WTVL-ME

Plus 2 PM and "WQVR, Southbridge MA," a mystery.

CHICAGO BULLS Jim Durham, J. J. Jackson.

1280 WMRO-IL	1320 WKAN-IL	1390 WVON-IL	1410 WRML-IL*
--------------	--------------	--------------	---------------

Plus 2 PM. Sunday games in Chicago are carried on WGGI-PM, not WVON.

CLEVELAND CAVALIERS Paul Porter, Gus Johnson

1760 WBBG-OH only. No net.

DALLAS MAVERICKS Dave Barnett, Bob Cohen.

820 WBAP-TX only. No net.

DENVER NUGGETS Bob Martin, Irv Brown.

850 KOA--CO

DETROIT PISTONS Paul Carey.

760 WJR--MI only. No net. Some games transferred to WNIC-1310.

GOLDEN STATE WARRIORS Bill King.

680 KNBR-CA only. No net.

HOUSTON ROCKETS Gene Peterson.

740 KTRH-TX only. No net.

INDIANA PACERS Bob Lamey

1070 WIBC-IN	1300 WHLT-IN*	1440 WPGW-IN*	1520 WSVL-IN*
1240 WHEU-IN	1340 WBIW-IN	1460 WOCH-IN*	1540 WBNL-IN*

Plus 9 additional PM.

KANSAS CITY KINGS Neil Funk.

810 KCMO-MO only. No net. 8 games transferred to KJLA-1190.

LOS ANGELES LAKERS Chick Hearn, Keith Erickson.

570 KLAC-CA Net includes WVIC-94.9-MI!

MILWAUKEE BUCKS Jim Irwin (all), Jon McGlocklin (home only)

620 WTMJ-WI plus net unknown.

NEW JERSEY NETS Joe Tait, Al Menendez.

620 WVNJ-NJ	1420 WLNA-NY&	1450 WCTC-NJ	1600 WWRL-NY
-------------	---------------	--------------	--------------

1300 WING-NJ (Plus 2 PM)

NEW YORK KNICKS Marv Albert, Richie Guerin

1130 WNEW-NY. No net.

PHILADELPHIA '76ERS Matt Gudkas, Andy Musser.

1210 WCAU-PA only. No net.

PHOENIX SUNS Al McCoy, Joe Gilmartin, Dick Van Arsdale, Dave Tunell.

630 KTAR-AZ	1230 KAAA-AZ	1400 KTUC-AZ	1450 KNOT-AZ
-------------	--------------	--------------	--------------

1150 KCKY-AZ

PORTLAND TRAIL BLAZERS Bill Schonley

1190 KEX--OR.

SAN ANTONIO SPURS Sam Smith

1200 WOAI-TX.

SAN DIEGO CLIPPERS Jerry Cross.

600 KOGO-CA only. No net.

SEATTLE SUPERSONICS Bob Blackburn.

560 KPQ--WA	920 KXLY-WA	1280 KIT--WA	1450 KBKW-WA
710 KIRO-WA	1240 KXLE-WA	1340 KOTY-WA	1490 KTEL-WA

UTAH JAZZ "Hot Rod" Huntley

1160 KSL--UT

WASHINGTON BULLETS Mel Proctor.

1500 WTOP-DC only. Carries 68 of 82 games.

NATIONAL HOCKEY LEAGUE

Again, several teams/stations have not answered our questionnaires. These are: Colorado, Edmonton, Los Angeles, Montreal, NY Islanders, Pittsburgh, Quebec, St. Louis, Toronto, Washington. Several of these will wind up having "no net."

BOSTON BRUINS Bob Wilson, Johnny Bucyk

610 WIOD-FL	1240 WHAI-MA+	1300 WPNH-NH*+	1450 WRKD-ME
WGIR-NH	WOCB-MA	1310 WORC-MA	WKRI-RI
850 WEAT-FL	WPTN-NH	1340 WHOU-ME+	WTSA-VT
920 WHJJ-RI	WWON-RI	WNBH-MA	1460 WBET-MA
930 WNNH-NH	WSKI-VT	WBRK-MA+	1490 WTVL-ME+
970 WYNZ-ME	1250 WARE-MA	1390 WPLM-MA+	WHAV-MA+
980 WCAP-MA	1280 WABK-ME*	1400 WLTN-NH	WMRC-MA
1230 WQDY-ME+	WEIM-MA		1510 WITS-MA
WMOG-NH+			
WERT-RI			
WJOY-VT			

(Plus 2 additional FM)

BUFFALO SABRES Rick Jeanneret

550 WGR--NY 1240 WJTN-NY

CALGARY FLAMES Peter Maher, Doug Barkley.

810 CHQR-AB only. No net.

CHICAGO BLACK HAWKS Pat Foley.

500 WIND-IL only. No net.

COLORADO ROCKIES Announcer unknown

850 KOA--CO

DETROIT RED WINGS Bruce Martyn, Sid Abel.

700 WJR--MI only. No net.

EDMONTON OILERS Rod Phillips, Ken Brown.

1260 CFRN-AB

HARTFORD WHALERS Chuck Kaiton.

1080 WTIC-CT only. No net.

LOS ANGELES KINGS Bob Miller, Pete Weber.

600 KOGO-CA

MINNESOTA NORTH STARS Al Shaver, Ted Robinson

610 KDAL-MN	1230 KCHS-MN	1250 WBRF-MN	1490 KOZY-MN
1140 KROC-SD	1240 WJON-MN	1480 KAUS-MN	1500 KSTP-MN

(Plus 5 FM)

MONTREAL CANADIENS

English language broadcasts on CFMT-600&6005SW, probably with a net, and some games on CBM-940. French language on CBM-690, and a net with this also. That's all we have at the moment.

NEW YORK ISLANDERS Jean Potvin, ??

570 WMCA-NY. Net unknown, includes WALK-97.5FM-NY

NEW YORK RANGERS Marv Albert, Sal Messina

1130 WNEW-NY only. No net.

PHILADELPHIA FLYERS Gene Hart, Bob Taylor

610 WIOD-FL	1270 WLBR-PA	1440 WMVB-NJ*	1460 WCMB-PA
WTP--PA	1310 WLOB-ME	1450 WILM-DE	1580 WRDI-NJ*+
1230 WCMC-NJ+	1350 WHWH-NJ	WIIN-NJ	(no other FM)
WEEX-PA	1390 WLAN-PA		

PITTSBURGH PENGUINS Announcer unknown

1410 KQV--PA

QUEBEC NORDIQUES Andre Cote, Michel Villeneuve

1280 CKCV-PQ and net. This is FF only - No EE coverage.

ST. LOUIS BLUES Dan Kelly, Gus Kyle.

1170 KMOX-MO

TORONTO MAPLE LEAFS Bill Hewitt, Ron Hewat

1430 CJCL-ON and net including CHYR-710/730.

VANCOUVER CANUCKS Jim Robson, Tom Larscheid, Al Davidson

550 CFJC-BC	920 CKCQ-BC	1270 CHWK-BC	1410 CFCL-BC
560 CKNL-BC	940 CJIB-BC	1280 CHQB-BC	1440 CFCP-BC
CHTK-BC	980 CKNW-BC	1340 CKCR-BC	1450 CKSP-BC
570 CKWL-BC	1070 CFAX-BC	CIVH-BC	CHBV-BC
580 CKXR-BC	1230 CFVB-BC	1350 CJDC-BC	1480 CHLD-BC
590 CPTK-BC	CKTK-BC	1370 CIFJ-BC	1490 CFWB-BC
610 CJAT-BC	1240 CKGO-BC	CHPQ-BC	CKBV-BC
620 CJCI-BC	CKOO-BC	1400 CKGR-BC	1500 CKAY-BC
630 CKOV-BC	CKBX-BC	CFLD-BC	1570 CHUB-BC

WASHINGTON CAPITALS Ron Weber

1500 WTOP-DC

WINNEPEG JETS Ken Nicolson, Curt Kielback

680 CJOB-ME	950 CFAM-MB	1240 CFAK-ON	1400 CKSI-ON
800 CPOB-ON	1220 CJRB-MB	1250 CHSM-MB	1450 CKHD-ON
900 CKDK-ON	CJRL-ON	1340 CKIG-ON	1490 CKEF-ON

Plus "CERE, Red Lake" and "CKLQ, Brandon," unknown to me.

COLLEGE BASKETBALL

CBS has contracted with Jim Host & Associates and the NCAA to broadcast up to 15 games in February and March and into the NCAA playoffs. This moves from NBC, where it had been the last few years.

Local college coverage: Many of the teams and stations which sent college football listings sent the basketball lists too. I haven't done any additional work on rounding up new lists from other schools. Some of the college FB stuff didn't get out last fall; if you have any questions, please write me and I'll try to answer them.

AIR FORCE FALCONS Gene Benson, Joe Cullinane

1140 KMMZ-WY*	1300 KVOR-CO	1400 KARR-MT	1490 KOJO-WY
1150 KWBZ-CO	1340 KYCN-WY	1480 KPUB-CO*	1530 KUUY-WY
1270 KIML-WY	1360 KRKK-WY	(Plus 1 FM)	

ALABAMA CRIMSON TIDE Doug Layton, Jimmy Bank

1230 WTBC-AL and network unknown.

ARIZONA WILDCATS Kent Derdivanis, Les Josephson, Bob Jacobsen.

940 KMGX-AZ and 13-station network, unknown.

ARIZONA STATE SUN DEVILS Tom Dillon, Butch Metcalf, Len Johnson

960 KARZ-AZ and net unknown.

BOISE STATE BRONCOS Paul J. Schnieder, Bpb Rosenthal

670 KBOI-ID	1240 KPLI-ID	1310 KLIX-ID	(Plus 2 FM)
-------------	--------------	--------------	-------------

BRIGHAM YOUNG COUGARS Paul James

1160 KSL--UT and 7 PM SCA across the country

CALIFORNIA GOLDEN BEARS Joe Starkey

510 KGO--CA and net, unknown.

CENTRAL WASHINGTON Bob Hardt.

1240 KYLE-WA only. Sometimes KMWX-1460 is added for playoff games.

COLORADO BUFFALOES Jim Kithcart

1490 KBOL-CO only.

COLORADO STATE RAMS Al Trask

1410 KCOL-CO only.

CLEMSON TIGERS Jim Phillips, Tim Burnett

1330 WFBC-SC at net, unknown.

CONNECTICUT HUCKLES Marty Clickman, Wayne Norman (tentative list)

610 WSNG-CT	1360 WDRC-CT	1400 WILI-CT	1590 WQQW-CT
-------------	--------------	--------------	--------------

FLORIDA GATORS Bob Leach, Otis Boggs, Bill Koss

850 WRUF-FL and net unknown.

FRESNO STATE BULLDOGS Phil Woodward, Jim Wilson, Arlen Bellah

580 KMJ--CA only. No net.

FULLERTON STATE TITANS John Rebensort

1370 KWRM-CA (Plus 1 FM)

GEORGIA BULLDOGS Phil Shaeffer

960 WRFC-CA and net unknown.

HUMBOLDT STATE LUMBERJACKS Announcer unknown

980 KINS-CA only. No net.

HAWAII RAINBOW WARRIORS Jim Leshey, Alan Elconin

760 KGU--HI only. No net.

IDAHO VANDALS Bob Curtis

103.9 KRPL-FM-ID and net, unknown

IDAHO STATE BENGALS Jim Fox, Glenn Alford, announcer TBA

790 KBRV-ID*	970 KAYT-ID*	1340 KXTC-ID	1400 KIGO-ID
--------------	--------------	--------------	--------------

960 KSRA-ID*	1240 KWKI-ID+	KACH-ID	(plus 1 FM)
--------------	---------------	---------	-------------

KANSAS STATE Steve Physioc, John Kadlic

580 WIBW-KS and net, unknown

LOUISVILLE CARDINALS Van Vance, Jack Tennant

840 WHAS-KY+ only. No net.

MARYLAND TERRAPINS Johnny Holiday

610 WIOD-FL	1010 WCST-WV**	1350 WZIX-PA	1470 WTTR-MD**
-------------	----------------	--------------	----------------

WHPL-VA	1050 WMSG-MD*	1370 WKIK-MD*	1490 WARK-MD
---------	---------------	---------------	--------------

630 WMAL-DC	1240 WCEM-MD+	1430 WNAV-MD	1590 WETT-MD
-------------	---------------	--------------	--------------

930 WFMD-MD	1300 WPER-MD	1450 WTHU-MD	WCBG-PA
-------------	--------------	--------------	---------

960 WSBY-MD	1330 WASA-MD+	(plus 4 FM)	
-------------	---------------	-------------	--

MASSACHUSETTS Joe Fennessey, Ray Ellenbrook

1240 WHAI-MA	1400 WHMP-MA	1600 WIXY-MA
--------------	--------------	--------------

MICHIGAN STATE SPARTANS (Chokers?)

Feed A: Announcers unknown

600 WTAC-MI	930 WBCN-MI	1270 WXYZ-MI	1380 WPHM-MI
-------------	-------------	--------------	--------------

790 WSCW-MI	1230 WCUZ-MI	1280 WPHY-MI*	1430 WBRB-MI
-------------	--------------	---------------	--------------

Feed B: WILS-1320 only. (plus 5 FM)

MINNESOTA GOLDEN GOPHERS:

Feed A: Ray Christeneau 830 WCCO-MN only. No net.

Feed B: Gary Wilcox 1010 WMIN-MN* plus net, unknown

Feed C: FM only

MONTANA GRIZZLIES Bill Schwanke

1340 KYLT-MT perhaps alone, perhaps with a network.

MONTANA STATE BOBCATS Dean Alexander, Bruce Parker
1090 KBOZ-MT and net, unknown
NEVADA-LAS VEGAS REBELS Kevin O'Brien, Fred Gallagher
1140 KMJJ-NV only. No net.

NEW MEXICO LOBOS Mike Roberts
770 KOB--NM only. No net.

NEW MEXICO STATE AGGIES Greg Flakus

1230 KOTS-NM	1270 KINN-NM*	1340 KISL-NM	1400 KCHS-NM
(plus 4 FM, including flagship KASK-103.1)			
<u>NORTH CAROLINA TAR HEELS</u> Woody Durham, Jim Heavner			
560 WGAT-NC	1050 WWGP-NC*	1280 WSAT-NC	1420 WVOT-NC
630 WMFD-NC	1080 WEWO-NC*	1300 WSYD-NC	1440 WBUY-NC
780 WBBO-NC*	1110 WBT--NC	1340 WJRI-NC	1450 WIZS-NC
810 WKBC-NC*	1150 WGBR-NC	WTSE-NC	1470 WBIQ-NC
	WCEC-NC*	1230 WSKY-NC	WAIR-NC
880 WRRZ-NC*	WCBT-NC	1360 WCHL-NC	1600 WKXQ-NC
960 WPTC-NC	1240 WJNC-NC	1400 WSiC-NC	(plus 10 FM)
		WLSE-NC	

NOTRE DAME FIGHTING IRISH

Feed A: Nationwide coverage via Mutual. Tony Roberts, Jon Gibbons

Feed B: WSBT-960 only. Lynn Thornton, Jerry Bleck

Feed C: FM only.

OKLAHOMA STATE Bob Barry

930 WKY--OK and 7 station net, unknown

OHIO STATE BUCKEYES Chuck Underwood, Vince Chickarella

610 WTVN-OH and net, unknown

OREGON DUCKS Warren Swain

590 KUGN-OR and net, unknown

OREGON STATE BEAVERS Darrell Aune, Jim Howe

940 KGRL-OR*	1260 KCYX-OR	1340 KLJR-OR	1390 KSLM-OR
1190 KEX--OR	1290 KUMA-OR	1360 KOHU-OR	1450 KEED-OR
1230 KRNS-OR#	1300 KHUG-OR*	1370 KAST-OR	KLBM-OR
1240 KFLY-OR	1310 KNPT-OR	1380 KBCH-OR*	1490 KBKR-OR
	(Plus 2 FM)		1590 KTLI-OR

PACIFIC TIGERS Will Watson, Denis Willens

1280 KJOY-CA only. No net.

PACIFIC LUTHERAN LUTES Steve Thomas

1400 KTNT-WA only. No net. (tentatively)

PITTSBURGH PANTHERS Bill Hillgrive, Dick Grant

1250 WTAE-PA and possible net, unknown

PORTLAND(OR) PILOTS 1480 KAAR-OR

PURDUE BOILERMAKERS

Feed A: John DeCamp. WBAA-920 and net, unknown

Feed B: Henry Rosenthal. WASK-1450 only.

ST. MARY'S GAELS Ned Butler

1480 KWUN-CA only. No net.

SAN DIEGO STATE AZTECS Ted Leitner

760 KFMB-CA only. No net.

SAN FRANCISCO DONS Hank Greenwald

680 KNBR-CA only. Games tape-delayed in case of conflict w/NBA Warriors.

SAN JOSE STATE SPARTANS Hal Ramey

740 KCBS-CA only.

SANTA CLARA BRONCOS Chuck Thomas,

1500 KXRK-CA only.

SOUTHERN CALIFORNIA (USC) TROJANS Tom Kelly

1580 KDAY-CA only. No net.

STANFORD CARDINALS Ron Barr

560 KSFO-CA only. No net.

SYRACUSE ORANGEMEN Doug Logan.

570 WSyr-NY and net, unknown.

TEXAS-EL PASO MINERS Jon Teicher, Rick Chavez

1380 KTSM+ only. No net,

VANDERBILT 1510 WLAC-TN and net, unknown

VIRGINIA CAVALIERS Mac McDonald, Todd Turner

870 WFLO-VA*+	1240 WT0N-VA	1340 WHAP-VA	1520 WEIM-VA*+
930 WLLL-VA*	1270 WHEO-VA*	1350 WFLS-VA*+	1530 WFIC-VA*
960 WFIR-VA	1280 WYVE-VA*	1380 WLRV-VA*	1560 WSBV-VA*
990 WNRV-VA*	1300 WKCY-VA*	WTVR-VA	1570 WJMA-VA*
1010 WMEV-VA*	1310 WEEL-VA	1420 WDDY-VA*	WSWV-VA*+
1070 WINA-VA	1330 WBTM-VA	1490 WAYB-VA	1600 WCPK-VA*
1190 WBDY-VA*+		(Plus 9 FM)	

WAKE FOREST Gene Overby, Bobby Cox

600 WSJS-NC and net, unknown.

WASHINGTON HUSKIES Bob Rondeau, Gary Johnson, Rick Meeder

1000 KOMO-WA and net, unknown

Continued on Page 16

EASTERN DX FORUM

215-368-8067

RICHARD EVANS
P.O. Box 1294

NORTH WALES, PA 19454

Niel Wolfish, 15 Donwoods Grove, Toronto, Ontario M4N 2X4

January is drawing to a close and I've been fairly active around the dials at SSS. 18 new stations so far in 1982 to put me at 850 heard and 450 verified. Latest verie was from WHEO for DX Test. 1540, 1560, 1580 and 1600 have been the dwelling spot for my SSS sessions. Most of the success has been on 1540, where 2 NC, 1 Ga & 1 Md station have been added to give me 26 on 1540, behind 1490 (28), 1550 (32) and 1580 (35). Disappointments of the '81-'82 season have been 1500 and 1530, where I expected some good SSS action like in '80-'81. So far, 1370, 1390 and 1540 have been the best this season. Will have to see what February holds in store. All interested bumper and window stickér collectors write me if you wish to trade with me. 73's for now.

Karl V. Jeter, 3590-C Clubhouse Circle East, Decatur, Georgia 30032

Greetings to all. Looks like this winter will be one for all of us everywhere to remember! Even Atlanta got socked, with what the local media dubbed "Snow Jam '82". That moniker came about due to some 16000+ autos abandoned on the freeway system by Southern drivers unaccustomed to that type of driving. I was one of the lucky ones: my usual 1 1/2-hour commute only took 1 1/2 hours, hi! Best of all, I was unable to get to work for 3 days, so guess what I got to do a lot of!! Lately, 640 kHz has been a lot of fun w/the departure of the Cuban. I've logged Guadeloupe, and am working on the various LA's there now: only one problem, that darn "pest", KFI, hi. But it's almost true, as KFI is now a pre-midnight regular here. It has been hrd here once as early as 2100 EST on 1/25 as I was tuning for Guadeloupe. Got an interesting reply from a CPC letter recently to WKBA-1550 Vinton, Va. The CE said that he "tested periodically for xmtr maintenance", but would not consider a "regular testing schedule"?? I guess he misunderstood my request altogether, as I asked only for a one-shot-deal that would be tied in w/any "regular" testing they might be doing. Oh well...he also stated that he would verify all correct reports w/a SASE. Question time: Does anyone know if a large metal desk within a few feet of a 4' altaz loop affect the loop adversely? Recently, due to necessity caused by a furniture-shuffling, I had to set my gear on such a desk. Several weeks later, I notice my loop no longer peaks sharply & has lost some gain as well. Any ideas? That'll do it for now...73's.

Jim Surin, 236 East Morningside Avenue, Lombard, Illinois 60148

Hello to all! Once again it's the one who rose the question, "Why is Lombard the Lilac Capital of the world?" I enjoy adding up how many stations I get every month and always strive for a new total to surpass the previous month. The most I have received in a month was 23 last August. To most veteran DXers, it sounds like a skimpy number, but to me, it is something to be proud of. Referring to a previous Forum that I wrote, Illinois is the second state as far as IRCA is concerned, there will be two more from "the lilac capital" joining, my nephew and his friend. This will bring the Lombard total to four and Illinois up to 31! On the network beat, WRMN-1410 Elgin, has a large two-minute announcement about the station joining Mutual. On the reincarnation portion of my Forum, WPRZ was also heard with a OC all day (RK-CDXR, 16 January) heard over WRRR null. About the 23 January edition by rce, what format did WMAQ have before 1975, Top 40? (See my Forum--rce) And did WIND go news/talk in 1978? My memory sure goes fast, hi. I can remember WCFL going EZL in 1975, then to news/talk in 1978. I have also noticed that WAIT has been running low power during the 14-18 December week. Were they trying out a new transmitter for possible reduced nighttime power? Hope not. Also noticed WOWO signal weaker than normal. DXing on the weekend of 22-24 January has been a rotten experience, especially with all the CBS stations carrying the Super Bowl. I like foot ball, but why couldn't they just record the Super Bowl and replay it during the lunch hour or when I'm at school. In my next forum, an announcement about a contest involving WKDC: the one who best describes the stations format in 100 words or more, hi. 73's.

Philip Boersma, 15570 Cleveland, Spring Lake, Michigan 49456

Since the subject of religious radio has been brought up in these pages recently, and since I used to work at a Christian radio station

(Boersma, cont...) (WKJR-1520), I thought I'd throw in my 2¢ worth. First, as with any other format, Christian radio can be good, bad, or mediocre. Just as every rocker out there is not of the caliber of WPLJ or WBCN, so also are there some allegedly "Christian" formatted stations which give that format a bad name. These stations generally run blocks of preachers, are not too picky about what philosophies are uttered in these programs (one 50kwer who shall remain unnamed here used to run virulently anti-Semitic programming in its "gospel" block), these stations are the type most often parodied by the secular media. If one examines the management of these stations, one will see that in most cases they are run by people who simply want to make easy bucks--and don't give a hoot about the message. There are, however, many good, professional Christian stations out there--staffed by people who care about what goes out over the air, who are not "kooks", and whose dedication to their beliefs is unquestionable. These stations are often highlighted by a high level of involvement in their communities, aggressive news and public affairs, and minimal "preaching" programs--and what programs of this variety they do have are carefully chosen and monitored for content; they are not of the "send \$5 and get an autographed picture of Jesus" variety. In short, as in any other business, in Christian radio there are real professionals and crackpot frauds. The latter usually are spotted immediately and lose credibility quickly. And in case you were wondering, WKJR is an excellent station, dedicated people, who really care about their audience. I have no complaints with their format...73s.

Bill Coleman, Jr., 114 Circle Drive, Rocky Mount, North Carolina 27801 919-443-3551 after 2300 best daily. Greetings to all. Well seems like the Cuban has dropped English programming on 1160 kHz. It was on from 0000 till 0500. Do we really miss hearing it, NO! Heard the WOMP-1290 Bellaire, Ohio test, on 2/1/82, hrd it real good on 1kw and just as good as on 500 watts, but I was getting too much of WHIO-Dayton. My name was mentioned as the first caller, then one from Chicago, Robert ????. Hey, I'm still interested in exchanging air checks of illegal pirate stations. Does anyone have any of the new Radio Caroline, or the Voice of Peace???? Speaking of pirates, I heard the NYC pirate back on the air on 1/31/82, on 1615 kHz, sounded like same guy who ran WFAT. Was giving out phone # 212-352-9906, and taking phone calls on air. WRITE soonest if you want to exchange recordings of pirates. I know there has to be a few of you out there that's interested in just listening to them. DX Tips still wanted also, call prepaid, best after 2300 919-443-3551.73.

Richard C. Evans, P. O. Box 1294, North Wales, Pennsylvania 19454 This is being typed early, due to a Sat. deadline in Seattle this time around (President's Day on Monday). Almost missed it, and a good FGBMFI meeting Monday evening means this is being typed at 0100 Tuesday 2/9. Jim Surin, as I recall, WMAQ-670 was MoR, with emphasis on standards being their format before they went C&W in 1975. They were basically my normally station for listening to from 1968 to 1975, with WJJD-1160 being mixed with it for preference from 1970 on. During 1966-1968, I tended to listen to WIND-560 quite a bit. After acid rock came in in 1967, I lost all appetite for rock, so I know WMAQ was not a Top 40 stn. Phil, I remember when WKJR's sister station, WKPR-1420, coming on the air in Kalamazoo, so I am familiar with the chain. They are indeed fine stations. The convention bids look interesting. Too bad, St. Louis didn't bother to put down the dates they were offering. Tentative plans are for me to be in Springfield, Mo. in August, and I should be able to tie it in with the Rock Island convention if they get it. I have no idea in regards to St. Louis. For Glen Kippel and others, I did not like typing Mike Brooker's Forum the other week, but I feel I do not have the right to reject Forums just because I don't agree with the contents of it. I did however cut a portion of the Forum (where the three dots are) because I felt it was misleading and could not be proved if I asked for proof. I still feel that way on the cut portion. (My interjected comments into that forum were not on Christian formats in general as much as to say that I feel preachers are not doing their job, and that if they were to preach the Word from the pulpits like they should, there would not be the need for all the radio preachers we have now.--And as I type this, I am listening to some good gospel music on FM, hi.) Enough said about formats on radio; let's get back to discussing DX since this is a DX club...Was up MM 2/8 long enough to log the WFLS-1350 VA DX Test, having seen it in DX News. In weak, but enough for a marginal report. PTL.

WESTERN

Nancy Hardy
2301 Pacific Avenue
Aberdeen, WA 98520

DX ROUNDUP

All times are
Eastern Local

Phone for hot WDXR tips: (206) 532-6827 till 10:30pm(PT) --no collect calls

DEADLINES: Thursdays 2/18, 2/25, 3/4, 3/11, 3/18, 4/1, 4/15, 5/13, 6/10, --
REPORTERS FOR THIS ISSUE:

- (pb) Phil Bytheway-9722 Mary N.W.-Seattle, WA 98117
R-390A/URR, 2x4 foot "wedge" w/single-ended FET pre-amp
(BH) Bill Hardy-2301 Pacific Ave.-Aberdeen, WA 98520
FR3-7, SM-1
(WJH) Bill Harms-P.O. Box 7428-Provo, UT 84602 TRF
(WJH-UTR) DX'ing at Rock Canyon w/TRF, 2000' Beverage
(SMM&MB) Steve Mittman & Mark Bixby-DX'ing in Banff, AB
(121km/75 mi. west of Calgary & 19km/12mi. NE of BC line)
TRF

OF SPECIAL INTEREST:

- 1420 KSCR WA, Renton now on the air w/RS. Hrd 2/3 2024 w/talk, spots, &
"South County Radio wx..." Quick s/off anncet. 2030. Dominating
channel, if Centralia-Chehalis was there it was not audible.
Left carrier on 'til 2032. (pb-WA) (Format?--NH)
1470 KBXN UT, Tremonton new stn on the air since 1/25. C&W mx and "Golden
Spike Country" slogans. Reception is difficult here in Provo
due to KONI-1480 slop. They are audible w/a fairly good signal
if KONI s/off early or if they s/on late on SM. (WJH-UT)
1480 CKTR AB, Edmonton Th 1/28 2357 Chinese programming w/"Edmonton" ment.
Weak "CKTR, Edmonton, Alberta" ID in EE 0000. How long has this
been on the air? No listing in NRC; CP listed in VJ (no call).
***** (SMM&MB-AB)
560 ?KPQ? WA, Wenatchee Su 1/24 2340 assumed w/"Q-56" ID; into rock mx.
Good signal. (SMM&MB-AB)
570 KVI WA, Seattle Th 1/28 0823 fair w/quickie ID hrd in passing,
"... and that's KVI sports..." (SMM&MB-AB)
580 ?CKUA? AB, Edmonton Sa 1/30 1552 fair midday at Lake Louise, AB (55km/
34 mi. NW of Banff) w/jazz program. (SMM-AB)
600 KGEZ MT, Kalispell Fr 1/29 2359 fair w/lady singing, then "This is
KGEZ, Kalispell," into CBS nx at 0000. (SMM&MB-AB)
610 KONA WA, Kennewick-Richland-Pasco went NSP as of 1/1/82, per their
engineer. 0300-0800 is automated. Still MOR mx, Ai net. (BH-WA)
620 ?KWAL? ID, Wallace Fr 1/29 0829 hrd tail end of s/on anncet, then U.S.
Nat'l Anthem; into pop mx, then lost. NRC lists KWAL s/on at
this time. Do they s/on this way? (SMM&MB-AB)
KTW OR, Portland Fr 1/29 0835 fair w/local wx, ID, into "Ventura
Highway." Fighting it out w/CKCK. (SMM&MB-AB)
CKCK SK, Regina Th 1/28 0836 good w/clear ID, then list of local
schools closed. Into Eddie Rabbit (pop format). (SMM&MB-AB)
630 KIDO ID, Boise Th 1/28 0836 momentarily o/CKOV w/a bit of mx, then
ID. Quickly lost to CKOV. (SMM&MB-AB)
CHED AB, Edmonton Sa 1/30 1550 midday at Lake Louise, AB w/pop mx.
"Ched" ment. during DJ patter, then ads for Southwest Waterbeds
and Volvo dealer in Edmonton. Fair signal. (SMM-AB)
CKOV BC, Kelowna Wed 1/27 0005 "OV" ID, temp., into C&W mx. Th 1/28
0835 poor w/"This is Larry McDivitt (?)..on OV Country." (SMM&MB)
640 ?KFI? CA, Los Angeles Th 1/28 0004 barely hrd "50 Ways to Leave your
Lover;" completely gone seconds later. Signal was utterly
faint--on the outer limits of perception. Had been trying for
this stn all week. Is there no escaping this pest, hi? (SMM&MB)
680 KNBR CA, San Francisco Wed 1/27 0903 poor w/pop mx, ID & PST TC.
Absolutely no sign of them the night before (despite extensive
trying!). (SMM&MB-AB)
730 KBOY OR, Medford 1/28 1943 local ads & nx. Fair w/CKLG GRM. (WJH-UTR)
CKLG BC, Vancouver Su 1/24 2343 fair w/"Vancouver's Office Top 20
Countdown--on LG-73." (SMM&MB-AB)
740 CBX AB, Edmonton Th 1/28 0841 w/Diana Ross. CBC report on possible
agricultural improvements (i.e., ideas) followed. Strong
signal. (SMM&MB-AB)
770 KXA WA, Seattle 1/28 0300 ID & nx. Amazingly strong signal actually
stronger than KOB at peaks. (WJH-UT)
790 CFCW AB, Camrose Th 1/28 0848 w/sports report on cross country
skiing at Goldbar. Into C&W song. (SMM&MB-AB)
800 ~~CKOK BC, Penticton MW 1/25 0004 poor w/very strange sound effects!~~
~~Faded up w/ID, and into Don McLean's "American Pie." (SMM&MB-AB)~~
~~CHAB SK, Moose Jaw Wed 1/27 0019 good w/"Saskatchewan's Super 8,"~~
~~into Journey song.~~

800 CKQR EC, Penticton MM 1/25 0024 poor w/very strange sound effects! Faded up w/ID, and into Don McLean's "American Pie." (SMM&MB)

CHAB SK, Moose Jaw Wed 1/27 0019 good w/"Saskatchewan's Super 8," into Journey song. (SMM&MB-AB)

810 CHQR AB, Calgary MM 1/25 0015 harness racing results till 0019, then ment. of racing results every racing day at 10:15pm. Into oldies. Sun 1/31 1329 w/"Here Comes the Sun," then man said "We're CHQR--the voice of the Calgary plains." Ment. of multi-car pile-up near Banff. (We passed it by. There were about 20 cars off the road--all w/AB license plates!). (SMM&MB-AB)

860 CBXB AB, Banff LPRT of CBR-1010 Calgary. XLNT signal of course. (See CBR for details). (SMM&MB-AB)

900 CJVI EC, Victoria Wed 1/27 0025 "Garden City Suzuki" spot. (SMM&MB)

910 KKSX WA, Vancouver finally hrd "KKSX..." ment. 1/14 0300 after many weeks of trying. Station #1500! Mixing w/CJDV in good KIXI null. Seemed to have rock mx w/woman anncr. Into nx after ID, may have been AI nx. (pb-WA) (AI is still on KEX-1190. KKSX is on a 24 hr. satellite network & their nx comes from that.--NH)

CJDV AB, Drumheller Sa 1/30 1620 strong midday at Lake Louise, AB w/"The new 91" IDs. C&W format. Frequent ment. "Calgary." (SMM)

920 KITN WA, Olympia (all day while visiting Olympia), they have changed formats to pop mx pending a call change to KQEU. Uses legal ID only on the hour during local nx, sneaking in "KITN Olympia" just before wx. Gives no call letters rest of hour, just slogan "The New 92." Once their call change is officially granted I suspect they will use "KQ92" slogans, based on numerous reader-boards around town saying "Welcome all-new KQ92 AM radio." Still uses assorted Mutual & Ae newscasts. (BH-WA)

930 CJCA AB, Edmonton Sa 1/30 1624 midday at Lake Louise, AB w/1959 song, followed by local wx, Lincoln-Mercury ad, & another 1950's song. (SMM-AB)

950 ?KMTX? MT, Helena MM 1/25 0034 assumed w/btfl mx. Strong signal. (SMM& MB)

KJR WA, Seattle MM 1/25 0032 fair in KMTX null w/ID, into rock mx. (SMM&MB-AB)

960 CFAC AB, Calgary Wed 1/27 2010 jingle "C-F-A-C spells CASH!" Into C&W following local ads. (SMM&MB-AB)

1010 CBR AB, Calgary Wed 1/27 1958 fair w/ID's only as "CBC 1010." Promo for "As it Happens" coming up at 6:30, 7:00 in Newfoundland. Into "News at 6 from CBC" at 2000. (SMM&MB-AB)

1060 CFCN AB, Calgary Th 1/28 0013 fair to good w/sports nx. Promo 0019 for the "CFCN Early Risers Club" to win a free breakfast from MacDonald's. (Wow, hi!). Pop format. (SMM&MB-AB)

1090 KING WA, Seattle Th 1/28 0023 caller ment. that 3 words in the EE language end in "GRY." One is "hungary," another is "angry," & he didn't know the third. Into rock mx w/"R. King--AM 1090" ID. Some unID rock QRM. (SMM&MB-AB)

1140 CKXL AB, Calgary Su 1/24 2353 good w/Van Halen special. Wed 1/27 1956 "XL Radio" ID, then spots for Skier's Sport Shop & Chinook Center. Into "Tainted Love" by Soft Cell. Fair to good. Su 1/31 1500 beginning of "The Weekend Special--songs that scored twice" (different artists). (SMM&MB-AB)

1150 *KIMM* SD, Rapid City hrd f/c 1/18 0235-0238 in KAYO null. Tone on at 0235, ran 3 min. then off. Called stn to verify it was them. This f/c is aired only in Jan./July as the stn calibrates its frequency counter then. All other months frequency checked during RS. This hrd w/mucho interference from CKIQ & a little KAYO. (pb-WA)

1160 KSL UT, Salt Lake City Th 1/28 0032 unexpectedly poor w/ID & TC. Gone seconds later! (SMM&MB-AB)

1230 ---- AB, Banff sign at entrance to park ment. stns on 1230 & 1490. Noted OC here all week. (Nothing listed in various logs). (SMM& MB)

1240 KSUE CA, Susanville 1/28 2000 ID into network (?) nx. Atop momentarily. (WJH-UTR)

1250 KSHI CA, Twentynine Palms 1/23 1811 local ads & frequent IDs. Good o/QRM. (WJH-UTR)

?KWSU? WA, Pullman Tu 1/26 2343 assumed w/classical mx. Poor to fair. (SMM&MB-AB)

1260 CFRN AB, Edmonton Tu 1/26 2345 fair to good w/soccer (Edmonton Drillers vs Vancouver Whitecaps); ment. of halftime score. Sa 1/30 1631 midday at Lake Louise, AB w/pop mx, into "CFRN Weekend Report." (SMM&MB-AB)

1270 CHAT AB, Medicine Hat 1/27 0001 ment. of Medicine Hat Dodgers losing soccer game. (SMM&MB-AB)

- 1300 KMFS WA, Seattle Tu 1/26 2122 talk about upcoming boat show in Seattle, then PST TC, into C&W mx. (SMM&MB-AB)
 CJME SK, Regina Tu 1/26 2357 "Music Radio CJME," followed by ad for Landmark Inn. Then "Here's Toronto on CJME!" & into rock song.
- 1320 KXRO WA, Aberdeen Tu 1/26 2126 good w/"Chuckie's (SMM&MB-AB) in Love," then "K-X-R-O" ID. Got this one yet, Nancy? (SMM&MB) (It's my official "WDXR-typing" station!--NH)
- 1330 KUPL OR, Portland Tu 1/26 2115 fair w/block of WOYL songs, Followed at 2132 w/ad for First Interstate Bank. Then, "This is the Music of Your Life on KUPL, Radio 1330." Wx for Portland area at 2133. (SMM&MB-AB)
- 1410 CFUN BC, Vancouver Tu 1/26 2107 fair w/song "I Love Rock & Roll," then "14 C-Fun" slogan. (SMM&MB-AB)
- 1450 KJUN WA, Puyallup logged call change (ex-KRPM) 1/17 1724, w/C&W mx. Into nx at 1730 "KJUN, 1450 news..." In the clear w/a little slop from 1460. (pb-WA)
- 1490 ---- AB, Banff OC noted here all week. Sounded // to 1230. (SMM&MB) (During the summer there are TIS stations in PF on 1230 and EE on 1490. Two locations for each--the east park entrance & Banff townsite. We reported these last fall.--NH)
- 1500 CKAY BC, Duncan Wed 1/27 0034 call letter ID, fair to good; into pop mx. (SMM&MB-AB)
- 1530 KFBK CA, Sacramento Fr 1/29 2300 surprisingly loud w/NBC nx. Afterwards, "KFBK" jingle & into tele-talk show. Fading nil to strong. Not here the night before! (SMM&MB-AB)
- 1550 ?KVAN? WA, Vancouver Sa 1/30 0800-0835 fair w/C&W mx. Kept insisting on fading whenever there was DJ patter. Finally hrd a "Vancouver ment. & a "... Super Radio" slogan. (SMM&MB-AB) (I changed this to tentative because Steve reported them as KGAR!--NH)
- 1590 KZOK WA, Seattle MM 1/25 0036 w/"You're listening to 16 KZOK w/the best of the gold." Oldies format, which sounds remarkably like 16 KWOW. (SMM&MB-AB)

UNID's:

- 570 Sa 1/30 1602 midday at Lake Louise, AB w/Canadian nx. IDs only as "CK Radio." Pop mx format. Had ads & PSA's for things in Kimberly, Bampher (spelling?), and Grand Brook. Is this CKSW?? (SMM-AB) (Sounds like you had CKEK in Cranbrook. Kimberly BC is nearby. Bill tentatively hrd this midday at Banff last August.--NH)
- 1470 Chinese hrd here, much stronger than 1480 CKTR (not //). A couple of days they were noted completely off! No listing anywhere for this one. Who? (SMM&MB-AB) (CJVB?--NH)
- Deadline for the Anniversary Issue WDXR will be 3/11. That's not too far away! So DX, and report!

May 8, 1951

HISTORY OF KPOJ - PORTLAND OREGON JOURNAL

1330 kilocycles, 5000 watts.

The antecedents of KPOJ were KFJR, KTBR and KALE. Here follows the sequence of events which contributed to the background and history of the station as it exists today:

In 1923, Ashley C. Dixon received a license, in the State of Montana, for a station to be operated under the call letters KFJR. In May, 1925, KFJR was moved to Eastmoreland, in Portland. In 1927, KFJR moved to the Lumbermen's Building, Portland, and broadcast from there until January 1, 1937.

In the fall of 1925, the station KTBR, owned by M. E. Brown, came into the picture, as the Federal Communications Commission permitted KTBR to have one-half of the time on KFJR's wave length. In 1927, KTBR operated from the Weatherly Building, Portland.

In August of 1932 the call letters "KALE" first came into use - KALE was incorporated. This came about because of the purchase, first, of KTBR by the Journal, Charles W. Meyers and C. Roy Hunt. At a later time, these three owners acquired KFJR. There was, therefore, one period when KALE was on a part-time basis. Also, KOIN, an affiliate of the Columbia Broadcasting System, and KALE were jointly owned and operated by the JOURNAL (Simon Winch acting for the newspaper), Charles W. Meyers and C. Roy Hunt, sharing offices and studio

CENTRAL DX ROUNDUP

Robert Kramer
6416 N. Richmond
Chicago, IL 60645

UNIDED, SPECIAL, CHANGES, et. al.

1190 WERU WI SUN PRAIRIE, 1/17 1658 poor W/HOYL & ID: "WERU Sun Prairie it's 4 o'clock" into nx. JA-WI.

All da Rest

580 KFXD ID NAMPA, 1/21 1919 fair w/female & ID, sports & ment. Nampa. JS-IL
1180 WKKE MS PEARL, 1/25 1711 poor W/HI from WAIT, male anc. "Music you can dance to", then wx. JS-IL
920 CKCY ON SAULT STE. MARIE, 1/24 0201 good W/C&W mx, then ID & nx, ment. FM stp. JS-
1190 WJES SC JOHNSTON, 1/28 1745 poor W/SID then S/Off ment. 1kw, no SSB. JA-WI
1220 WAXO TN LEWISBURG, 1/27 1755 fair W/C&W mx & S/Off SSB on piano. JA-WI
1230 KADA OK ADA, 1/26 2358 fair W/C&W mx, wx & ID. JA-WI
1250 KBRF MN FERGUS FALLS, 1/18 1806 fair-poor UPI nx, then spot & lcl nx. JS-IL
1280 CJJD ON HAMILTON, 1/24 0219 good T40 oldies & male anc W/IDs. JS-IL JA-WI
CJSL SK ESTEVEN, 1/29 1750 poor-fair W/C&W mx "S1" slogan & full ID, some WZLW slop//
1260 WWDG DC WASHINGTON, 1/19 1846 poor W/female DJ, T40 mx. JS-IL
KCBX MO SPRINGFIELD, 1/24 2135 W/T40 & cash call contest. JS-IL
1380 WQHK IN FT. WAYNE, 1/21 1854 fair W/female anc W/nx, wx all local. JS-IL
KCNW KS FAIRWAY, 1/31 2201 poor W/spiritual pgm, ID & ment. of K.C. JS-IL
1400 WBAT IN MARION, 1/31 2106 poor in CY garbage W/address of lcl church in Marion, rel. pgm. JS-IL
1910 WING OH DAYTON, 1/22 2148 fair W/C&W mx & IDs, NBA scores. JS-IL
1520 KRSS SD SIOUX FALLS, 1/30 1812 poor W/lcl spot & nx. JA-WI
1600 WARU IN PERU, 1/31 1745 poor W/ID & school closings then S/Off. JS-IL

Deuces Wild

JA.... Jim Albrecht 3313 N. Weil St. Milwaukee, WI 53212
(RF-2200)
JS.... Jim Surin 236 E. Morningside Ave. Lombard, IL 60148
(RF-4900, Ferrite Coil, LW)

Sorry about the misplaced items above. I have a sprained neck & when I sorted them I put 1260 after 1280. Guess it happened because I can barely turn my head. Little DX done the past 2 weeks. I just got a pay TV unscrambler (homemade of course) & a video cassette recorder. These new toys are currently receiving primary attention. 73.

facilities on the mezzanine of the New Heathman Hotel. The KALE transmitter remained at Sylvan, on KOIN's property, until June of 1948. In September, 1937, KALE became affiliated with the Mutual-Don Lee Broadcasting System.

In 1944, because of the duopoly decision rendered by the FCC - which prohibited a single owner from operating more than one radio station - it was necessary for KALE and KOIN to be separated. At that time, KALE was purchased outright by the Portland Oregon Journal and the offices and studios were moved to the Studio Building, later known as the 919 Taylor Street Building.

In June of 1948 the station call letters were changed from KALE to KPOJ - the P O J being for Portland Oregon Journal, and in August of that same year the studios and offices were moved to the Odd Fellows Building, 1019 Southwest 10th Avenue.

The present location of our transmitter, which was ready for service in June of 1948, is at Mount Scott, 8½ airline miles from Portland (Route 1, Box 2433, Portland 66).

KPOJ-FM (98.7 megacycles, Channel 254, 44,000-watts ERP) went on the air in June, 1948.

R. W. Brown
R. W. Brown
General Manager
KPOJ

EASTERN DX ROUNDUP

Bob Lazar

1711 Wainwright Dr.

Reston, VA 22090

Deadlines: Tuesdays 2/23, 3/2, 3/9, 3/16, 3/30, 4/13, 5/11

- 730 WLOR GA Thomasville, 2/3 1829 fair-good w/ Mr. Bill, s/off. (RAL-VA)
 WMTK KY Vancleve, 2/3 1815 good w/ long newscast, s/off over rlg
 organ mx. Went of Sun. sked 1200-1600. (RAL-VA)
 780 WCKB NC Dunn, 2/1 1759 fair w/ local nx w/ f, s/off anmt by m. (RAL)
 810 WQIZ SC St. George, 2/3 1800 good, way o/ WGY w/ gospel mx, s/off ment
 "WQIZ Gospel Radio." (RAL-VA)
 890 WHNC NC Henderson, 1/19 1517 had local nx & wx, "Here is the wx for
 Henderson & vicinity." Also had other mentions of NC. Fair
 o/ WLS. (LG-WV)
 900 WLSI KY Pikeville, 1/19 1519 C&W mx, also nx, wx by m. Fair o/ QRM.
 940 WKGM VA Smithfield, 1/16 1700 had ID "Serving VA w/ 1000 watts of power,
 this is WKGM, Smithfield." Very fluttery sig. (LG-WV, last 2)
 1000 WTAK AL Huntsville, 2/4 1744 fair w/ "Take Ten" slogan, ad for TV nx,
 Howard Cosell. (RAL-VA)
 WKBQ NC Garner, 2/4 1746 poor w/ promo, PSA, Anne Murray song. Better
 at 1800 s/off. (RAL-VA)
 1230 WKYG WV Parkersburg, 1/16 1716 C&W mx. Good strength but fluttery. (LG)
 1240 WHIZ OH Zanesville, 1/16 1719 pop mx & R&R. Had PSA about heat conser-
 vation. Moderate strength & fluttery signal. (LG-WV)
 1250 CHWO ON Oakville, 2/1 0415 good w/ fades playing albums, "...music
 continues all night on CHWO." (BC-VT)
 1270 WTSN NH Dover, 1/30 1633 in very good w/ QSB, contest promo & contemp
 mx. (BC-VT)
 1290 WKNE NH Keene, 2/1 0935 in very good w/ typical AM pgmning. (BC-VT)
 1320 WEET VA Richmond, 1/13 1635 fair w/ QSB. C&W mx, ment of Petersburg
 but also several ID's heard. (BC-VT)
 1350 WNLK CT Norwalk, 1/13 2013 fair "WNLK w/ the Beatles." (BC-VT)
 CKAR ON Oshawa, 1/25 0143 fair w/ "Billie Joe...on CKAR" & ment of FM
 affiliate. (BC-VT)
 1400 WPQZ WV Clarksburg, 1/16 1741 pop mx, variable signal, fading in & out.
 Lots of QRM. (LG-WV)
 WKWK WV Wheeling, 1/17 1546 R&R mx. Fluttery but good. (LG-WV)
 1450 WPAR WV Parkersburg, 1/16 1623 pop mx, very strong signal w/ some
 QRM. (LG-WV)
 1490 WMOA OH Marietta, 1/16 1723 pop mx stn, had Chipmunks singing. Good
 signal w/ some QRM. (LG-WV)

DX test

- 1290 WOMP OH Bellaire, 2/1 0347 WNEF predominant on freq but finally during
 WNEF fade caught code ID "WOMP Bellaire, Ohio" & another at
 0351. (BC-VT)

Eastern DXers

- BC - Bob Curtis, 17 Cobbleview Dr., Colchester, Vermont 05446
 (SP-600, longwire)
 LG - Lee Groves, Rt. 1, Box 35, Friendly, WV 26146
 (GE 3-5206A)
 RAL - Bob Lazar, 1711 Wainwright Dr., Reston, VA 22090
 (Yaesu FRG-7, GE Superadio)

Sports Networks---continued from page 9

WASHINGTON STATE COUGARS Bob Robertson
 1250 KWSU-WA#e and net to be announced.

WEBER STATE WILDCATS

Feed A: Dave Walsh, Brent Hancock.

1430 KLO--UT only.

Feed B: Don Spainhower, John Peterson

1490 KJQN-UT only.

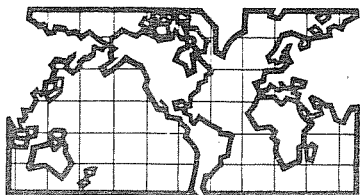
WYOMING COWBOYS Gerry Gallup

1240 KPBC-WY and net to be announced.

CREDITS: Bill Hardy, Rich Segalas, Ken Onyschuk, George Walton, Tim Cronin,
 stations and teams/schools.

ADVANCE BASEBALL INFO: Philadelphia Phillies move to WCAU-1210.

UPDATES, CORRECTIONS, ADDITIONS, COMMENTS, GRIPES, ETC. - Please direct
 them to me. Tune around a couple nights and send in what you hear -
 your locals are somebody else's DX!



DX WORLDWIDE - WEST

Pat Martin - Editor

P.O. Box 843, Seaside, Oregon 97138

(503) 861-3185 -- deadline Tuesday

Brian Vernon came up with a lot of good catches this week. Not too much here to report, but DU conditions seem to be slightly improving. On with the reporters and reports:

TRANS-ATLANTIC DX ROUNDUP (THE BIG ONE!!!)

- 173 U.S.S.R., Kaliningrad, 1/7 at 0208 YL w/piano and exercise type pgm //236. (BV)
 227 POLAND, Konstantynow-1/10 0055 class. mx, 0100 6 pips, YL ancr, good w/Minchumina, Alaska beacon QRM. (BV)
 657 EAST GERMANY, Burg-B.R. 1/27 0519 male w/road cx in CG. (BV)
 U.S.S.R., Murmansk-1/8 C601 male and female w/talk, poor, 1/29-0312 YL w/RR talk, good (BV)
 702 NORWAY, Vadsø, 1/26 C545 male w/slow tk // 675, 131h, good, 1h45 fair. (BV)
 738 POLAND, Poznan-1/26, 0608 George Benson mx, C610 YL and Male ancrs, xInt //819 poor (BV)
 801 WEST GERMANY, Minchen-Jsmaning-B.R. 1/26, 0518, beer garden mx, then YL ancr o/u USSR (BV)
 t JORDAN, Amman-1/10 1808, YL AA singing, poor. (BV)
 U.S.S.R., Leningrad-1/8 0558-YL ancr, ment. Leningrad, couple of times, maybe local pgm (BV)
 810 SCOTLAND, R. Scotland-Westerglen 1/26 C612 male w/EEC rpt., then talk about cold wx, killing farmers pests. (BV)
 819 POLAND, Warszawa-1/26 0556-BeeGees "Stayin' Alive", C600 male ancr. Js Andorra back here yet? Not noted this season. (BV)
 873 WEST GERMANY, Frankfurt-AFN, 1/26 0551, male ancr with school bus delays and road cx, topping USSR briefly (BV)
 954 CZECHOSLOVAKIA, Brno-C517 1/28 accordion dance mx, good. (BV)
 963 FINLAND, Turku-1/28 0515 YL ancr, then piano mx, clas. style, fair. (BV)
 999 t U.S.S.R., Moldavia SSR, Kishinev-1/28 0511 YL then male RR talk, 1/29 0331, male w/RR (BV)
 1008 HOLLAND, Flevoland-1/28 C648 male w/talk and Amsterdam ment. (BV)
 1026 AUSTRIA, Linz, etc. ORF-1/26 C627 YL w/GG talk (BV)
 U.S.S.R., unk. 1/27 0259 Mayak I.S. 0300 pips OM in RR talk, fair, clear (BV)
 1035 PORTUGAL, Lisbon-1/27 0600, 3 vy high pitch pips, miss one, then another high pip. ID then OM w/mx, good. (BV)
 U.S.S.R., Estonia SSR, Tallinn-1/27 USSR anthem, 0233 band mx, presumed Estonian anthem, good. (BV)
 IRAQ, Babylon-1/29 0316 male and female chorus sang same tune at diff. times, AA type, 0318 Western inst. mx, w/male then female w/talk 0320 AA singing by male, vy good signal. Topping Estonia for quite a while, nice tape. (BV)
 1044 EAST GERMANY, Burg-1/26-0626 male w/intro to Beatles record, local-like sig. (BV)
 1062 TURKEY, Diyarbakir-1/27 0301, YL w/talk // 1017. (BV)
 DENMARK, Kalundborg-1/28, C633 "If I had words" EE record, C634 male ancr, w/intro to "Speedy Gonzales in Danish. (BV)
 1080 POLAND, Katowice-1/28 0506 EE mx, "Hello, hello also ment. in other Eur. languages, massive sig. topping KANC // 1206. (BV)
 1089 ENGLAND, Brookmans Park, 1/27-0752 rr mx, //1053, both good. (BV)
 t U.S.S.R., Krasnodar-1/28 0308 OM then YL, RR talk. (BV)
 1125 t LIBYA, El Beida-1/27 0236 male w/AA talk, almost 100% sure was //1251. (BV)
 1134 YUGOSLAVIA, Tovarnik-1/27-0303.50 male w/end of talk, Sofia ment. piano mx, followed. (BV)
 1143 U.S.S.R., Kaliningrad-1/27 0204 noted on EE service // 1323, 1h54. (BV)
 1179 SWEDEN, Horby-1/26 0531 male ancr, then another w/talk. (BV)
 1215 ENGLAND, Washford-1/6 0751, cricket game noted in progress. (BV)
 1287 CZECHOSLOVAKIA, Litomyšl, 1/28 0500 male ancr, w/talk ment. of R. Praha, xInt. (BV)
 UNID, 1/27 0133 cont. i KHZ TT w/single pip, then double pips, every other 12 sec., noted past 0136 w/this. (BV)
 1296 ENGLAND, Orfordness-BBC 1/28 0608 YL w/prob. Polish talk on WS (BV)
 1314 NORWAY, Stavanger-1/28 0557 noted w/IS big carrier. (BV)
 1323 EAST GERMANY, Naven-1/27 0202 noted on EE serv. //1143, 1h49, 1/29 again w/EE ser. 0341 // 1h49. R. Moscow. (BV)
 1350 t U.S.S.R., Armenia SSR, Yerevan-1/9 1621 plus, trid. jazz pgm, 1628 YL w/RR sounding tlk, 1629 silence 1630 male ancr, QRM from JOER, only USSR listed. (BV)
 1359 EAST GERMANY, Berlin-1/27 0213, YL w/GG singing. (BV)
 1386 U.S.S.R., Kaliningrad-1/27 0215 ballads and inst. mx 0229 Mayak IS, 0230 OM ancr, xInt vy good sig. of late here. (BV)
 1402a LIBYA, Tripoli, 1/28 0543 male w/AA singing noted for quite a while. (BV)
 1413 QAN, Masirah Is. BEC-1/9 1612 YL w/Hindi talk 1614.5 carrier cut, 1614.40 OM w/ment. of Londener BBC 1615 Chimes "Salun and talk by OM (Persian listed), then YL xInt sig. noted 1700 w/WS nx in EE (BV)
 1440 LUXEMBOURG, Marnach-1/28 seemed to be having xmtr problems, after 0200 couple of vy short S.P. and seemed to be on reduced power till 0244, then back to normal. (BV)
 SAUDI ARABIA, Damman-1/28 0300 ancr (male) 0302.20 male w/AA singing, foll. Lux s/off, fair sig. 1/29 0303 male AA singing, good. (BV)

- 11458 ENGLAND, Radio Manchester, 1/27 0709 OM w/wx ment. of next mx at 0730, 0710 Up and About pgm, poor. (BV)
ENGLAND, R. London-1/27 0730 YL w/wx then promo for Rush Hour on R. London. (BV)
- 11481 UNITED ARAB EMIRATES, Dubai-1/9 at 1740 AA singing, massive sig. (BV)
- 11485 ENGLAND, Unids 1/28 0616 jingle??? "---- you on 202 (meters)" OM w/rail strike mx, topping Norway briefly. (BV)
NORWAY, Svalbard, Longyearbyen 1/28 0603 male w/tlk //630, station seemed to put a big hum on 11485. (BV)
- 11494 U.S.S.R., Leningrad-1/27 0231 noted w/EE service // 1143, 1323-noted at 0200 w/freq. only 227 meters ment. MW-1/29 0300 again noted only 227 meters ment. on MW again, still w/EE ser. 0341. (BV)
UNID, 1/29-0300 anthem s/on 0303 YL w/tlk sounded like "transmitting this transmitter? then lost to USSR EE serv. only Kenya s/on at this time!! (BV) (Good luck on finding out this one. Kenya is 5 KWT-PM)
- 1503 POLAND, Stargard Szczecinski-1/9 noted w/EE service 1634-1656 IS noted 1659, only TA carrier across dial at the time, good FE opening. (BV)
- 1521 CZECHOSLOVAKIA, Kosice-1/27 0126 rr mx, 0130 six pips, OM w/tlk, prob. mx (BV)
U.S.S.R., unk. 1/27-0129 Mayak IS noted w/Czech. 0130 YL w/tlk. (BV)
- 1548 SCOTLAND, R. Forth-Edinburgh-1/28 0556 rr mx, 0600 R. Forth "Where your news comes from" bunch of BBC locals seemed to blossom, firch 0629 after relaying R. Two net, but no ID's caught. (BV)
- 1602 t EAST GERMANY, Unk. 1/27 0248 inst. mx, then YL anc'r seemed to be // 1044, but not 100% sure. (BV)

PAN-AMERICAN DX ROUNDUP

- 640 GUATEMALA, Guatemala City-TGW, fair-good w/maimba mx, ment. of Guatemala 1125-1/25, w/XFI off. (BP-Wa)
- 670 UNID, Prob. Mexican w/Ranchera and Mariachi mx 1115-1140 1/25 w/10 sec. of barn-yard sounds (dog, cow, horse, rooster, etc) after each song! Fair o/u WMAK, no ID's hrd. (BP-Wa)
- 1160 t CUBA, 1/5 0727 male SS singer, noted 0733 male w/SS talk, the only CA station noted here this season, apart from Mexicans. (BV)

TRANS-PACIFIC DX ROUNDUP

- 182 U.S.S.R., Petropavlovsk-1/11 1847-OM w/tlk, fair. (BV)
- 191 U.S.S.R., Blagoveshchensk, 1/11-1845-orch. mx, good. (BV)
- 227 t MONGOLIA, Ulan Bator-1/4, 1259.5 UNID chime IS, then YL and OM anc's, audio too muddy for good copy. (BV)
- 936 U.S.S.R., Unk. 1/8-1612 male w/opera singing // 155, 182, TF's. (BV)
- 1017 CHINA, Jilin PHS-1/11-1639 OM w/tlk before audience, maybe a play or pantomime. (BV)
- 1026 AUSTRALIA, MacKay-MK-1/11 1715 male w/product of the month. "Mellow h-M-K" ID, ballad type mx, still fair at 1738. (BV)
- 1188 SOUTH KOREA, Incheon-HAKX-1559 male w/tlk o/instr. mx, 1600 Oriental mx, 1601 s/off, then carrier out, on 1/11. (BV)
- 1197 AUSTRALIA, Southport-133-1/10 1651 rr mx then S.I.D. "Radio Double G" rr mx, fair (BV)
JAPAN, Unk. 1/11 1819 male w/JJ tlk // HBC-1287, etc. (BV)
- 1224 UNID, 1/9 1719 male w/oriental tlk net sounding audio. (BV)
- 1233 t JAPAN, Aomori-JOGR 1/11 1742, YL anc's then rr mx, //1242 "all night people" net, also 1113, 1440, 1485. (BV)
- 1269 JAPAN, Obihiro-JOHW, 1/11 1818, male w/tlk // HBC-1287, 126C, 1278, 1197 (underlined not listed. (BV)
- t CHINA, Taiyuan (listed), 1/9 1731 YL w/CC tlk, vry wavey signal. (BV)
- 1287 JAPAN, Sapporo-JOHR-1/11-YL w/JJ tlk, then ballad mx, good sig. (1201 noon LT) (BV)
- 1386 AUSTRALIA, Adelaide-5AA, 1/11 1730 EZL mx "Both sides now" 1731, OM w/TC, "One minute past four" "Kisses for me" inst., seems automated (BV) (I believe they are, same format last time I hrd 5AA.PM)
- 1422 JAPAN, Yokohama-JORF-1/10 1722 clas. mx, 1724 OM w/JORF ID, repeated then rr mx, prob. testing. (BV)
- 1476 U.S.S.R., Vladivostok-1/11 1959-FS IS, 2000 OM and YL w/CC tlk, poor (noon LT) (BV)
- 1566 AUSTRALIA, Wangaratta-3NE, fair to good w/CZW mx, "Someone could lose a Heart Tonight, Eddie Rabbit, at 1017 on 2/5. Best hrd in a while, "3NE" ID after song. (PM-Or)

VERIES:

- 760 MEXICO, Guadalajara-XEZZ sent v/l in SS and postcard in 1 month for SS report and cassette v/s Teresa Morales, Programacion. (BP-Wa)
- 963 FINLAND, Oy Yleisradio Ab., letter and card v/s E.J. Hawkins. (BV)
- 1485 NORWAY, Svalbard-Norsk Riksringkasting, letter verie v/s Thor Ormestad. (BV)
- 1610 ANGUILLA, Caribbean Beacon sent vq, brochure, postcard and rel. leaflet in 2 months Arrived 2 weeks after postmark date (supposedly airmail) and obviously water damaged, vq and brochure were stuck together and had to be steamed apart!!! (BP-Wa)

THANKS TO THESE REPORTERS:

BP-Wa Bruce Portzner-6546 19NE-Seattle, Washington 98115
 HQ-180, 1 ft. loop
 BV-Y Brian Vernon-General Del.-Elsa, Yukon, CANADA
 FRG 7000, DX 300, 5 Bev.
 FM-Qr Yer Editor
 E.H. Scott (RBO-2)
 600 ft. 1w, Ground System.

The following are apparent changes in Mexican station information from what was listed in the IRCA FOREIGN LOG, Ninth Edition, pages 57-68. Where slogans are listed, they would appear to supersede those previously listed:

580 XEHP Estudio 5-80	1290 XEDA Hours: 12-6
590 XEFD Hours: 13-4	XENX here, ex-1270; hours 12-8
630 XETK "TK Radio Hits"	XE1Y Super Onda; hours 13-23
690 XEN Hours: 12-6	1310 XEHJ Hours 12-1
710 XEDP Hours: 13-1	XEV8 Radio V-B
740 XEEJ is listed back on 650; don't	XEPO R.Voz
know if they turned in the CP	1320 XESR Hours: 14-8
XEFZ 1kw, 24h (prob. 1/.5)	XEUH R. U-H
750 XEQF Hours: 12-4	1340 XERLK Radio Miled
790 XERPC Hours: 12-8	XEYR listed on 1390, 1kw ???
XERC Canal 79	XEPX LV del Angel
800 XEAN Ocotlan. Hours: 13-1	XERP8 LV de Victoria
810 XEIN Hours: 12-5	1350 XEJY La Y, Griega del Valle, canal 1350
840 XE10 Voz Amiga. Back on air.	1360 XED1 Hours 11-7, ex-AN
850 XEFZ Hours: 11-3	XE1K Hours: 13-1
860 XEMO Uni Radio	XELS Hours: 12-1
XENW La Estacion del Silbidito	1380 XEKT listed 1360. Would someone in So. Cal.
920 XEOP La Campeona	please check this out? Thanks-PT
XEMJ delete R.Popular	XEVD Hours: 12-5
XEOK El Radiazo Mexicano	XEGW R.Tropical
XEBH has SW, 11820kHz	1400 XEWJ LV de Tamazula
950 XEFA Hours: 11-7	XEFS R.Matamoros
960 XEKS on 13-6	1420 XEEY. Listed as Xalpa, but slogan listed as
XE1Q R.Felicidad	R.Jalpa. Semanticists note--PT.
970 XEQX delete La Campeona	1430 XERAC Radio Rac; 24h
990 XEBC Hours: 12-6	XETT just plain R.Tlaxcalteca
1010 XEWS delete R.Fiesta	XEHW Rosario is now XEHC8
1040 XEJAQ R.Felicidad	1450 XEARE La Nueva Voz de Ojinaga
1080 XEXK "Tu Conexion"	XEGC Onda 14-50
1090 XEOD "La Tropical Juvenil"	XEPP Hours: 12-6
1140 XEXF R.Felicidad	1460 XELX R.Zitacuaro, La Grande
XETE R.Manantial; Hrs: 12-1	1520 XEVUC Hours: 12-6
1150 XEXP Radio X-P	XEEH Radio Joya (delete other slogans)
XERTM Hours: 12-3	1530 XESD Radio Silao
1160 XE1U listed on 990 ???	1550 XEDV Hours: 13-1
1170 XEZS delete Radio Hit	1560 XEFAJ is 20kw. Studios Mexico City. R.15-60.
1180 XEYV Radio Amor	Slogan listed as "R.Consentida" but this
1190 XESOL Jornada Musical	hasn't been reported. (XEVIP formerly here
1240 XEWG Hours: 12-6	went to FM 3/1/81).
XEREY R. Reyna	1580 XEAF R.Hits
1250 XEMG Hours: 12-4	XENQ 5kw
XEDK 24h	XEVAB Hours: 12-4
XETF has SW, 9545kHz	XEUY Hours: 11-5
1260 XEZH Jornada Musical de Irapuato	1590 XEART listed as Jojutla, Hours: 12-1
1270 XEAZ 24h	XEPT R.Misantla
XEGL La Pionera	1600 XEAE Hours: 14-4
XENY Radio Gesy	XERTP Hours: 12-1

No frequencies listed for XEAVR Veracruz, Ver., or XEOB Pichucalco, Chih. This information comes from Medios, the Mexican version of SRDS, Dec. '81/Jan. '82 edition, and is only as up to date as stations' submitted information allows...

DX WORLDWIDE EAST

Neil Kazaross, Editor
518 E. Grand Avenue
El Segundo, CA 90245
(213)322 3119

TRANS ATLANTIC DX ROUNDUP

- 531 ALGERIA Ain Beida 0149 Jan 28 AA moaning, violins, pr-fr; much weaker than //549. (Connelly-MA)
- 549 ALGERIA Oran 0147 Jan 28 AA talk // 891, v.gd. (Connelly-MA)
- 648 HET audible against WAB Feb 6 0200 (Smith-VA)
- 774 SPAIN synchros 0155 Jan 28 "Oye como Va" by Santana (Connelly-MA)
- 891 ALGERIA 0146 Jan 28 AA talk, xint (Connelly-MA)
- 1467 HET Feb 5 2200 v.strong audible het against 1470. Sounds OJ. (Smith)
- 1470 HET audible against 1460 Feb 6 0132 (Smith-VA)
- 1521 SAUDI ARABIA Juba 0200 Jan 28 jamming WAB; audio, however, was fragmentary & chopped up by severe "ITS-slop". (Connelly-MA)

PAN AMERICAN DX ROUNDUP

- 525-t COSTA RICA Cartago TICAL noted w/ss male antr, ss MOR mx 0503-0515 (No ID so tentative) Jan 22. (Healy-RI) Nice to hear from you Craig. Welcome to DXW-W!!! TICAL is the only thing here-ed
- 535 GRENADA Mourne Rouge 0140 Jan 28 ss talk then "Stand By Your Man" by Tammy Wynette- at good level. (Connelly-MA) Noted on late w/ sporting event (cricket?) in ss 0620-0625 Feb 1 (Healy-RI)
- 540 MEXICO San Luis Potasi ABMA w/ "La hora de Mexico" pgm, apparent s/off (Carrier cut) @ 0459 Feb 1. (Healy-RI)
- 540 VENEZUELA Villa del Rosario YVOV R. Perija ID hrd at 0315 Feb 2 weak but dominating. (Smith-VA)
- 555 ST KITTS Basseterre ZIZ 0150 Jan 28 disco, DJ w/ reverb, then "Just the Way You Are" by Billy Joel, xint. (Connelly-MA)
- 640 GUATEMALA Guatemala TGM LV de Guatemala w/ marimba mx & IDs around 0147-0155 Feb 1, pr-fr w/ Guadeloupe & YVQO. (Wolfish-ON)
- 640 VENEZUELA Puerto La Cruz YVQO Ondas Portenas dominating 0100-0240 Feb 1 w/ LA mx, ID's & spots. QRM from Guatemala & Guadeloupe (NW-ON)
- 640 GUADELOUPE Arnouville FR3 0220 FF tx by OM 0226 s/off w/ "La Marseille" fol'd by bits of instr mx, pr-fr w/ YVQO on Feb 1. (Wolfish-ON)
- Hey, Niel, I bet you miss the Cuban - hi -ed
- 670 VENEZUELA Caracas YVLL R. Rumbos ID w/ lots of chimes Feb 2 0336 operating // 4970 kHz, smothering WMAQ. (Smith-VA)
- 690 CUBA assume Santa Clara-ex-630w/ Cuban ID & typical M/F format in SS, v.strong 0636-0639 Feb 1. (Healy-RI)
- 699 DOMINICAN REPUBLIC Valverde 0152 Jan 28 blasting YVWH/HJLA w/ raucous. (Connelly-MA)
- 730 COLOMBIA Bogota HJCU complete ID: slogan, call (Twice!) & location @ 0525. Good modulation, splashing 725 & 735 Feb 4. (Healy-RI) Also hrd w/ R. Melodia ID & mx from William Tell Feb 6 0030. Strong & on top. (Smith-VA)
- 750 VENEZUELA Caracas YVKY Many R. Caracas ID's Feb 6 0045. R. Sandino not present, a regular here. (Smith-VA) 0405 JA 31 local-like o/WSB w/ "I Can't Go for That" by Hall & Oates / R. Caracas-Maxima ID "Too Much Information" by the Police: better rock than US AM stns. (MJ, MX Critic- hi -ed, - MA)
- 770 UNID somebody in British accented ss here u/ WABC, mixing w/ a ss stn..R. Jamaica-prob 0643-0647 Feb 1. (Healy-RI) Sure sounds like Jamaica, which, incidently, is quite a nice catch w/ WABC on -ed.
- 778 UNID "R. Comerana" (sp?) ID @ 0650 & 0650 Feb 1 SS MOR mx also. 774/775 hets & WBBM splash 0650-0705. (Healy-RI) Sounds a lot like R.Sonorama off freq. from 780 -ed.
- 780 COLOMBIA Cali HJZG accordion mx o/u Juba 0156 Jan 28. (Connelly-MA) Has any body hrd R.Almirante ex-1200 listed here in ARTH?-ed
- 810 COLOMBIA Bogota HJCY 0158 Jan 28 sutatenza ID loud, then "Mundo Noticias" pgm (Connelly-MA) Feb 6 0055. Astonishingly strong, stronger than any local. WGY absent, or down for the count. (Smith)
- 820 CUBA R. Ciudad de Habana ID Feb 6 0058. Very strong & alone, a very classy stn, xint atste in mx (Smith-VA)
- 880.2 UNID awful growl on WBB (from a Cuban ?) during good LA ex.0159 Jan 28. (Connelly-MA)
- 890 COLOMBIA Bogota HJLE wls falls victim to another killer Colombian Feb 6 0100. Several Bogota refs then some really steamy SS Barry Manilow-type ss love talk/mx. Must be Fri nite. Blasting in S9 plus (Smith-VA)

- 910 CUBA Camaguey R.Cadena Agremonite Feb 2 0226 Strong & on top w/ ID said very slowly 2 times. (Smith-VA)
- 940 MEXICO Mexico City AEQ ID @ 0523 "... La Capital Mexicana" "Equis-eh coo". Later on TRF "Equis-eh-coo R-R-Radio" SID @ 0549, many commercials. Very "cityish" polished sound. Clear & over every thing 0458-0549 Feb 2. (Healy-RI)
- 1124+ COSTA RICA noted w/ EE & SS mx, SS ancer too much WNEW buckshot for ID 05150540 Feb 3. (Healy-RI)
- 1170 HAITI Port au Prince 4VRS community singing in FF w/ children. Quite charming Feb 3 0210. ALSO 0230 w/ French OM but strange sounding FF. Has WVA QRT-hi-hi (Smith-VA)
- 1224+ COSTA RICA TIPJ Partial ID hrd @ 0500".... Hota" carrier cut 0503 Feb 3. This their s/off time? (Yes, per WRTN-ed) (Healy-RI)
- 1428.5 UNID het against WENE/WNUK Jan 28. (Connelly-MA)
- 1500 MEXICO Mexico XERH 0110-0150 Feb 1 dominating 1500 w/ talk show & then LA mx & ads, gd o/ wTOP. (Wolfish-ON)
- 1530 CUBA Moron u/WKY w/ "Territorio libre en America" etc. New Cuban for me # 53. Feb 2 0130. (Smith-VA)
- 1555 JAYMAN ISLANDS R. Jayman 0107-0126 w/ Dolly Parton special, fr signal on Feb 1. (Wolfish-ON) Yes, she is quite special !! -ed 0425 Jan 31 "Music of Your Life"-type old tunes, then R. Jayman ID at s/off: audio very distorted! (Connelly-MA) sound man was dreaming about Dolly Parton at the time! -ed.
- 1580 ANTIGUA VOA pgmg. very strong, alone Feb 2 0135 have hrd strong het from 1579 lately. Is this Cuba's answer to VOA?? (Smith-VA) I don't think Cuba would jam a EE VOA. Cuba is also several hundred miles from the targeted Caribbean audiences. If this is a jammer I'd think it's from Grenada which suffers from heavy Cuban influence. 1579 may also be the ever wandering Cadena Agremonite outlet from 1580, although w/ 250 watts it'll take real good ex for this to be strong -ed.

CONTRIBUTORS

Mark Connelly DXing from the Boston waterfront w/ car rx, whip w/tuner.
 Niel Wolfosh 15 Donwoods Grove, Toronto, ON M4N 2X4- FRG-7, SM2, superadio, 30' LW.
 Gardner Smith 6907 Fern lane, Annandale, VA 22030- HQ145X & 80meter dipole
 S.Craig Healy Box 182 Cumberland, RI 02864 R390A, 120' LW, TRF

The CCCC on this thing gets worse & worse. (I type them 5 times to make them that dark!) LA's were quite good in late Jan. & early Feb. So long from your sorry editor.

73's - KAZ -

Avez-vous Votre Foreign Log?

More than 100 pages long, the Foreign Log will include information on thousands of medium wave stations in over a hundred countries. This information will include:

- Summaries, in frequency order, of the schedules, ID methods, programming, times and locations heard, and other information on the several hundred stations reported to DXM recently.
- Information on hundreds of other stations, gleaned from various other BCB publications.
- Lists of stations in Mexico, China, and South Korea, fully updated as of September, 1981.
- Tables of great circle bearings and distances from Atlanta, Boston, Chicago, Denver, Houston, Los Angeles, and Seattle, to 141 foreign cities.
- Tables of sunrise and sunset times for foreign DXers.
- Lists of foreign stations carrying American Country Countdown and American Top Forty.
- And other useful information.

To reserve your copy of the Foreign Log, send \$5.50 cash, check, or money order to the IRCA Goody Factory, P.O. Box 17088, Seattle, WA 98107. (Non-IRCA/NRC member price: \$6.50)



Western DX Forum

★★★★

IRCA—Serving the Broadcast Band DX'er Since 1964

Editor: Ric Heald, P.O. Box 4861, Santa Rosa, CA 95402-4861 (707) 865-1260

1981/2 Deadlines—Weekly on *Wednesday*, 10 Days Prior to Publication Date
(Note: Tuesday Deadlines Prior to U.S. 3-Day Weekends)

MIKE HARDESTER, P.O. BOX 1565, SAN MARCOS, CA 92069-0540

Received a letter from KJNP 1170 concerning their DX Test of 29 September (last year) and while the test was aired as planned, the following was mentioned in the letter: "We do operate a directional antenna, which has a deep null oriented to the southeast, so it is not too likely that we would be heard without exceptionally sensitive receiving equipment or very peculiar propagation conditions." This would seem to coincide with the pattern as printed in the NRC Canadian American Night Pattern Book which shows their lobe to be northwest. They did mention their only confirmation of being received on the Test as being "Two confirmations from clubs in the Chicago area." Very 73 de Mike. (Thanks Mike. You've answered a question that this Board member and the prez had-RtH.)

W. GEORGE ELLIOTT, c/o CKOK, 33 CARMi AVE., PENTICTON, BC V2A 3G4

Hiya! Hope evrything in DX-land isn't nulled in your locals. Not too much happening on this end of the 49th.

Old news: Worked ANer 0000-0600 01 January. First ANer since I left CKOV. The show I did was a simulcast on CKOR-FM, CKSP, CKOO and CKOO-1. I did a little something during the shift to add a little color. I made phone cut-ins with other stations in the Province and pumped the fact that drinking and driving don't mix. I called CKEG, CKOV, CKCQ, CHIM (FM), CJAT, CKDA, CJIB and CJAZ (FM). I think the little rap we did on the air went over well.

Not much DX done over here. Did get a reception report from bp for CKOO-1. He should have his reply by now.

Radio news around town: BBM's have been back for some time. CKOK is doing fine. No sign of new CIGV-FM on results because they went on the air during survey period. I hear that CKIQ waxed my old CKOV in Kelowna. That breaks my heart. . . (sarcasm). Word has it that CKSP will move to new studios and start broadcasting there by this weekend (30 January). The new studios are just down the block and across the street from 'SPs present set up.

That's all for now. Good DX and 73 de WGE.

BILL HARDY, 2301 PACIFIC AVE., ABERDEEN, WA 98520

A few people have asked when the next IRCA Almanac will come out. As many of you know, I'm head of the Almanac project. I'll have to co-ordinate the timetable with Bruce and Phil and the printers in Seattle, but as of now, fall '82 looks good.

But first, let me ask this. Do you, as DX'ers and IRCA members, want or need a new edition of the IRCA Almanac?

True, the first two Almanacs were popular, sold well, and made a little money for the club. And I hope they've been useful. Lately, I haven't used mine much, simply because I haven't DX'ed that much. But the few times I've wanted to ID an unID, for myself or for Nancy, I've found such things as the network listing, slogans, broadcasting updaters and sports network handy.

But there is a lot of work involved in putting an Almanac together. If we publish Volume 3 next fall, I figure most of my spare time in August, September and October will have to go into the project.

For one thing, I'm behind on both DXM scanning and AM-FM log updating. That's two or three weeks of work right there. Also, there are many new satellite-distributed networks and it will take some letter-writing to track them all down. So before I get started, I want to be sure I'm not spending a lot of time on something that will benefit only a handful of people.

I have asked for input a few times, but either your letters aren't reaching me or you're not writing them, hi.

So I'll ask again. Do you want or need a new edition of the IRCA Almanac this year? If so, which parts of it do you use the most and want improved and/or updated? Which parts could be left out? Any ideas for new sections? Most importantly, any new volunteers to help with the editing and typing?

I want and need your comments. Write me or call prepaid (206) 532-6827 between 6PM and 10.30PM PLT, or write your opinions in a forum. 73 de BH.

STEVE MC GREEVY, 45 ELDA DR., SAN RAFAEL, CA 94903

I finally after years of DX'ing using longwires and random wires, built a three-foot loop and am pleased with results. It's vastly superior to all my longwires, not only for domestic DX'ing, but especially trans-Pacific and Latin DX'ing. I'm able to null all the clears and now hear numerous Latin stations making their way underneath. After KRVN and XEPNK s/off, with WCBS nulled, CMAB Cuba and another Spanish station is heard (R. Union?) (This sounds ignorant, but I know it as that "bloody Nicaraguan," hi-RtH.) Other LAs on 1040, 870, 890, 830, 640, 660, etc. Pointing it in the direction of TPs (northwest), HLAZ 1566 reduced, yes reduced KPMC and the 1570 Canadians to pitiful hets with loud RR talk and gospel/religious music. I know lots of you use loops and are wondering what the big deal is. I also know probably many DX'ers are using ransom wires and don't know what they are missing, like I was. Loops are very easy to construct, as I got two 42-inch poles, drilled small holes three-eighths inches apart, cut a notch in each pole and lash them together to form a cross. Then wind 24-gauge insulated wire through the holes about 30 turns (taught) and connected to a mini 365 pF variable tuning capacitor across the two wire ends (in parallel) and a lead-in to the receiver. I attached a one-meter-long for the stand and a rubber band to a hook in my ceiling for tension to keep it standing. The only disadvantage is that I can't tilt the loop in this setup, but it'll do for now. (Why didn't you simply send for plans from the Goodie Factory, Steve? And what about the one-turn tuning wire?-RtH.)

Local super pest KFAX can be partially nulled to reveal a country station (KREX?). (Or maybe WWWE if they're not WUSA by now-RtH.) Ric, you say you can't null San Jose stations at your location? KLOK, KXRX, KLIV, KEEN, KNTA can all be nulled nearly completely at this location. (They can be nulled, but not well, Steve. I think you're nulling groundwave at night, and they're coming in on skip or combination ground/skip at night here-RtH.) Daytime dial: KUKI with KRE nulled, KOBO with K-PEST nulled and KESE with KROY nulled. I can even null very local KTIM almost to nil. KBOI is fair with KNBR slop nulled daytime.

Ric, for the DX'er who doesn't have a loop or know how to build one, a special loop issue of DXM would be interesting and useful. I'm for Sheldon's idea of a loop issue. (We've had one, but believe some time ago-RtH.) I forgot to mention I had to remove several turns in order to get the loop to tune 540-1600. 73.

TERRY A. KLAISEK, 9720 VICKIE PL., ST. LOUIS, MO 63136 (314) 868-7274 ppd.

Rob Harrington, are you alive? If so, please forum. Same goes for Tim Nounan, Rich Eddie, Rick Overmann and Rob Girardi. Jef Jaisun, stop eating your zuchinnis and forum.

Now the wards person in IRCA in Alabama is lazy. I sent for 13 awards way back in August and no awards. Well, guess who will be going to Alabama in April? Yup, me. My awards had better be here soon or my visit may be unpleasant, hi. Produce or resign. This is a club for active people.

Good DX to all including Rick Overmann. (Continued from last week-RtH.)

ROB HARRINGTON, 3181 S. YORK ST., ENGLEWOOD, CO 80110

Hello. Just found night site of KLDK. It's quite distant. To get there, east on 6th Avenue from I-225 about ten miles, 6th becomes Gun Club Rd. Another half mile to Jewell, east on Jewell 3.7 miles; you'll see the seven towers on the right. Slow down and look for a very badly marked side road, Arapacoe Country road 83. South on 83 for 1.3 miles. You're now at the site. (Glad to know, Rob. I've always wanted to visit them, hi-RtH.)

Have gotten questions regarding my CPC Hotline. It's in operation from 0610 to 0700 GMT for information on scheduled tests in the next six days. If none are scheduled, line will not be answered. For last-minute hot tips, phone between 0450 and 0555 GMT. Any tips in DXM will not be given out unless requested. Service is in effect until 06 April, Saturday nights (Sunday GMT).

Am trying to update my files. Need to know who wrote me while traveling on a bus to Hammond asking if I was going to be in Louisville. Dated back on 01 July 1980. Who are you?

My dimmer switch interference continues. Neighbor has outside lights controlled by a dimmer and it's run NSP. I've asked him to shut them off. I guess the only way to get rid of the problem is to move to an apartment, probably within 90 days. 73. (Rob, are you serious? Apartments are notorious for noise. That's like going from the pan into the fire, hi-RtH.)

THE INTERNATIONAL RADIO CLUB OF AMERICA

A non-profit organization devoted to the hobby of listening to distant radio stations on the AM broadcast band (510 to 1630 Khz).. IRCA is a member of ANARC, the Association of North American Radio Clubs.

OFFICERS, President--Don Kaskey, 465 Burnett, Apt. 1, San Francisco, CA 94131. Secretary-Treasurer--Rich Segalas, Board of Directors--Phil Bytheway, Nick Hall-Patch, Ric Heald, Ernie Cooper, Jef Jaisum, Bruce Portzer, Niel Wolfish.

MEMBERSHIP DUES: \$16.50 First Class to the U.S.A., Canada, and Mexico. \$20.00 Air Mail to the rest of the world via Canada. Air mail direct from the U.S.: \$25.00 to Central America, Caribbean, Colombia, and Venezuela; \$30.00 to the rest of the world. Sample copies cost 50¢ each or three International Reply Coupons. Make checks and money orders payable to I.R.C.A. Persons living outside the U.S. should send checks or money orders payable in U.S. funds.
DUES AND ADDRESS CHANGES should be sent to Rich Segalas, P.O. Box 26254, San Francisco, CA 94126.

DX MONITOR, the official bulletin of the IRCA, is published 34 times a year; weekly from October to March, twice in September and April, and monthly from May to August.
PUBLISHING STAFF, Bruce Portzer (editor-in-Chief, phone(206)-522-2521), Evelyn Portzer, Nick Hall-Patch, Jef Jaisum, and Phil Bytheway.

THE IRCA GOODIE FACTORY. The IRCA Almanac, Foreign Logs, reprints, and other materials are available for nominal charges. For a complete list, write to P.O. Box 17088, Seattle, WA 98107.

Unless otherwise noted, permission is granted to publish, broadcast, or otherwise reproduce non-copyrighted material appearing in DX Monitor, provided credit is given to IRCA and the original contributor.

Opinions expressed in DX Monitor are those of the contributors and do not necessarily reflect those of the IRCA, its publishing staff, editors, or officers.

DX Monitor is printed by Save-on Printing, Seattle, WA.

IRCA

**P.O BOX 21074
SEATTLE, WA 98111**

U.S.A.

First Class

D.A. Nyholm 1983

**2071 Cedar Street
San Carlos, CA 94070**

FIRST CLASS MAIL
U.S. POSTAGE
PAID
Seattle, WA
Permit No. 601