

ANNAPOLIS BROADCASTING CORPORATION



WANN

"Maryland's Capital Station"

CHURCH CIRCLE AND SCHOOL STREET
P. O. BOX 749, ANNAPOLIS, MARYLAND

January 8, 1947

Mr. Norman L. Maguire
185 Williams Street
Glastonbury, Connecticut

Dear Mr. Maguire:

We acknowledge with pleasure your report on reception of WANN equipment test broadcast. We have checked the details reported by you, and find them accurate.

Thank you for your good wishes, and your very fine report.

Very truly yours,

ANNAPOLIS BROADCASTING CORP.

Morris H. Blum

Morris H. Blum,
President

MHB:mc

THE CHESAPEAKE RADIO CORPORATION
ANNAPOLIS * * * MARYLAND
RADIO STATION WASL

March 10, 1947

Mr. Norman L. Maguire
185 Williams Street
Glastonbury, Connecticut

Dear Mr. Maguire:

This will verify your reception of
radio station W A S L on December 16, 1946.

Thank you very much for your
cooperation.

Yours very truly,

THE CHESAPEAKE RADIO CORPORATION



Joseph Griscom,
Chief Engineer

JG/jlm

WBAL

THE WBAL BROADCASTING COMPANY • BALTIMORE

FEBRUARY 25, 1937

MR. NORMAN MAGUIRE
101 HOPE STREET
STAMFORD, CONN.

DEAR MR. MAGUIRE:

THIS IS TO ACKNOWLEDGE YOUR REPORT OF DECEMBER 18,
1936, AND TO CONFIRM YOUR RECEPTION OF WBAL ON
1060 KILOCYCLES OF DECEMBER 18, 1937.

YOUR REPORT HAS BEEN CHECKED AGAINST THE STATION
LOG OF DECEMBER 18TH, AND WE ARE GLAD TO CERTIFY
THAT YOUR REPORT OF RECEPTION WAS FOUND TO BE
CORRECT.

WE TRUST YOU WILL CONTINUE TO LISTEN TO AND ENJOY
OUR PROGRAMS.

WITH EVERY BEST WISH, WE ARE

VERY TRULY YOURS,

THE WBAL BROADCASTING COMPANY

WBAL

THE WBAL BROADCASTING COMPANY • BALTIMORE

June 26, 1940

Mr. Norman L. Maquire
101 Hope Street
Stamford, Conn.

Dear Mr. Maquire:

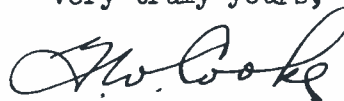
This will acknowledge your reception report of
June 20, 1940 reporting reception of the following WBAL programs in
your area:

EDST

- 10:00 P. M. "WBAL, Baltimore."
Description of Louis-Godoy Fight.
- 10:33 P. M. "WBAL, Baltimore" - announcement between
rounds -- continuation of description of
fight
- 10:45 P. M. "Baltimore's Powerful Voice, WBAL".

Thanking you for your interest and the information
contained in your report, I am

Very truly yours,



G. W. Cooke
CHIEF ENGINEER

GWC:DS

Dear DX'ers:

This will confirm your logging of WBCC
on 2-25-47
operating simultaneously on 1120 and 1420 Kc. We
were using .250 KW on 1120 Kc and 1.0 KW on 1420 Kc,
both transmitters being terminated into the same
antenna.

Our assigned frequency is 1120 Kc but we
were selected by the Federal Communications Commission
to conduct allocation tests and to determine whether
or not 30 Kc separation of stations in the same locality
was feasible. Our 1420 Kc frequency being 30 Kc re-
moved from local WWDC which operates on 1450 Kc.

Thanking you for your interest, we remain,

Yours truly,
RADIO STATION WBCC

Vernon V. Story
Vernon V. Story
Director of Engineering

VVS:r

THE MONUMENTAL RADIO COMPANY

MEMBER BASIC NET WORK
COLUMBIA BROADCASTING SYSTEM



811 W. LANVALE STREET
BALTIMORE, MARYLAND

February twenty-first

1

9

3

9

Mr. Norman L. Maguire
Room 211, Sec. IIA,
Richard's House,
Lehigh University
Bethlehem, Pennsylvania

Dear Mr. Maguire:

We are very glad to have your card
advising that you tuned in WCAO on Monday,
February 20 between 5:08 and 5:18 pm when you heard
the Varieties program.

Your reception has been verified with
our station log. The Varieties program is a
local one broadcast from our studios.

You may be sure we appreciate your
interest and we hope you will find it possible
to tune in WCAO quite often in the future.

Very truly yours,

Mary W. Lewis

Program Department

1

WCMD

1240 ON YOUR DIAL

● CAMBRIDGE, MARYLAND

June 15, 1949

Mr. Norman L. Maguire
21 Vista Way
Port Washington, New York

Dear Mr. Maguire:

This is to confirm your report of reception of WCMD at 3:00 a.m. E.D.T. on June 7, 1949. WCMD operates on 1240 KC with a power of 100 watts.

Equipment:

Collins	-	300 G Xmetr.
OSC	-	6 F 6
Buffer	-	6 L 6
Int. Amp.	-	Pr. 807's
Mon.	-	Pr. 810's
P.A.	-	Pr. 810's
Ant.	-	150 ft. vertical series fed.

I sincerely appreciate your interest and report.

Yours very truly,

IRVING MARKHAM
CHIEF ENGINEER

IM:bbr

WCUM

1490 KILOCYCLES

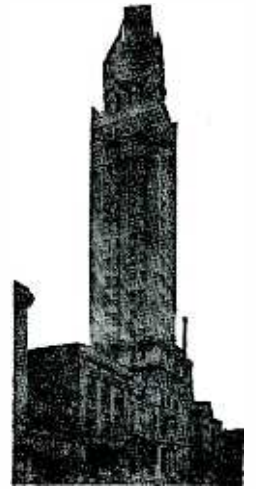
A KARL F. STEINMANN ENTERPRISE

MEMBER THE COLUMBIA BROADCASTING SYSTEM

WILLIAMS ROAD AND
EAST CITY LINE
P.O. BOX 360
CUMBERLAND, MD.

TELEPHONE 5400
TELETYPEWRITER SERVICE
CUMBERLAND, MD. 31
BALTIMORE A 57

June 8, 1949



TOWER BUILDING

Mr. Norman L. Maguire
21 Vista Way
Port Washington, New York

Dear Mr. Maguire:

Thank you for your reception report of June 4th, 1949.

We are happy to say that your information checks with our log.

Hope you will be hearing us on the air soon again.
Our staff sends to you our best wishes.

Cordially,

William Leach
B.S.

William Leach
Acting Station Manager

WL/bjs

W F M D

**MONOCACY
BROADCASTING
COMPANY**

WINCHESTER HALL
FREDERICK, MD.

PHONE 1466

February 27, 1941

Mr. Norman L. Maguire,
101 Hopè Street,
Stamford, Conn.

Dear Mr. Maguire:

We are in receipt of your letter dated February 17th and after checking over our log are pleased to verify your report of reception between the hours of 4.45-5.12 $\frac{1}{2}$ PM on that date. WFMD has no "veries" and we trust this letter will serve the purpose you desire.

WFMD operates on a frequency of 900 KC with a power of 500 watts from 6.30 AM (8.00AM) Sundays and signs off at various times after 9.00 PM. During the month of February we change to directional operation at 5.45 PM and for this purpose we use two 257 foot towers; with a single tower alone for daytime transmission. Our directional system is so designed that W F M D transmits a minimum signal in the directions of WBEN Buffalo NY, and WJAX Jacksonville Fla., which operate on the same frequency as us. Our studios are located at the above address, while our transmitter is situated 2 $\frac{1}{2}$ miles from Frederick on a farm 1/2 mile off U. S. Route 340.

Please accept our thanks for your report and interest in our behalf.

Very truly yours,

John A. Fels
John A. Fels,
Chief Engineer.

1370 KILOCYCLES

WMHI Radio

500 WATTS

Musical Heights, Inc.

BRADDOCK HEIGHTS, MD.

23 March-63-February 63

MAILING ADDRESS
ROUTE 5, FREDERICK, MD.

TELEPHONE
MONUMENT 2-2148

Dear Norman:

So glad to hear from the state of New Mexico...another state gets chalked up on my map. Things are beginning to look a little brighter for the Western Half of the U.S.A. Must still get Utah, Nevada, N. & S. Dakota, Washington, Oregon and then the Western Half of USA is complete with the exception of Hawaii and Alaska. Someday....

Glad to report your report is reported correctly! I'm amazed that we had S-4-6 in there...that's most unusual. Our best so far has been an S-3 in Amarillo, Texas. As you can see, when you superimpose our ~~sketch~~ coverage map on a USA map, we swing down your way, but also, swing more towards Louisiana than N.Mex. WLTC packs a beautiful signal west. I am finding this out through the many reports I've received.

THANK YOU...FOR YOUR RECEPTION REPORT DATED February 18, 1963.
WE ARE PLEASED TO KNOW THAT YOU HAVE HEARD WMHI IN YOUR AREA. THIS IS TO VERIFY YOUR REPORT THAT WMHI WAS IN OPERATION AT THE TIMES YOU INDICATED.

BELOW IS A ROUGH SKETCH OF OUR COVERAGE MAP INDICATING BOTH PRIMARY AND SECONDARY CONTOURS AND SOME OF THE CITIES WITHIN OUR SERVICE AREA.

WMHI OPERATES WITH A POWER OUTPUT OF 500 WATTS INTO A 2-TOWER DIRECTIONAL ARRAY ON 1370 KCS. OUR DAYTIME STATION SIGNS OFF AT LOCAL SUNSET, BUT WE HAVE ESTABLISHED THE FOLLOWING SIGN-ON TIMES:

MONDAY MORNING IS OUR REGULARLY SCHEDULED DX BROADCAST.

TUESDAYS THRU SATURDAYS 5:00AM
SUNDAYS ~~7:15am~~-0700
1st MONDAY OF MONTH ~~4:00am~~-0445
2ND, 3RD, 4TH, 5TH MONDAY 4:45AM
(ALL E.S.T.) no 5th monday dxcasts.

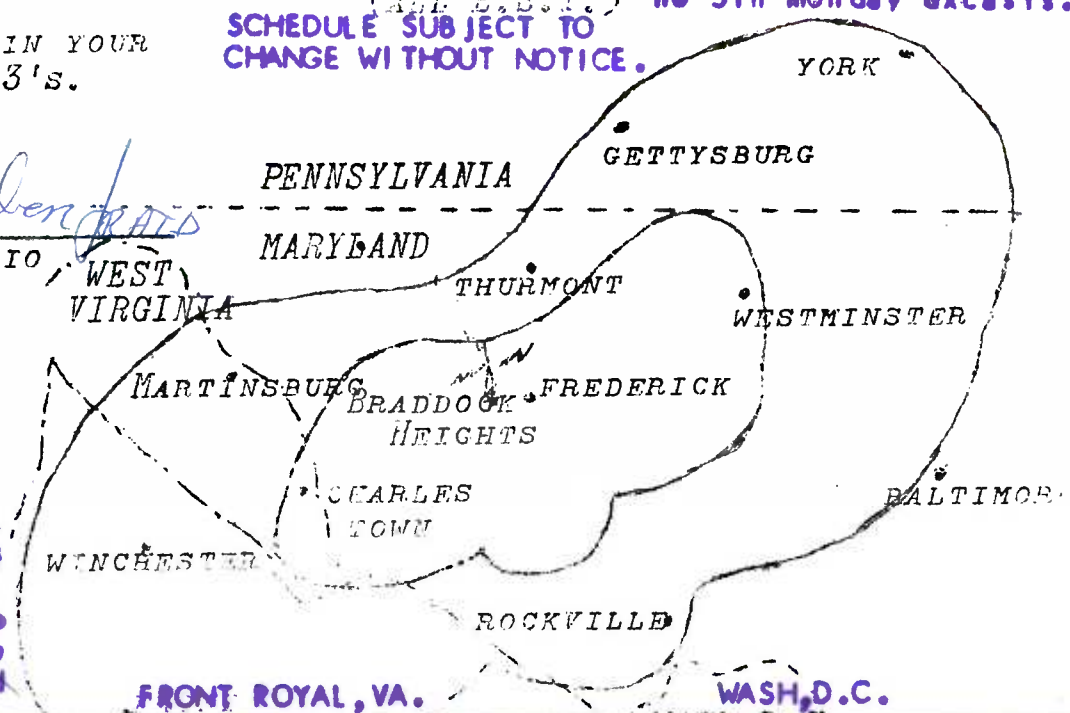
BEST OF LUCK IN YOUR DX'ING AND '73'S.

SCHEDULE SUBJECT TO CHANGE WITHOUT NOTICE.

Byrd E. Nauden
WMHI RADIO

SPECIAL DXCAST ON 4 MARCH FOR CDXC (canadian dx club) FROM 0430-0500.

Enclosed you will find a bit of information about the National Radio Club. Perhaps you will be interested



Norman -

23 March 63 - February 63

member!

Dear Norman:
So glad to hear from the state of New Mexico... Another state gets
called up on my map. Things are beginning to look a little brighter for
the Western Hill of the U.S.A. West still got Utah, Nevada, Id. & Dakota.
Washington, Oregon and then the Western Hill of U.S. is complete with the
exception of Hawaii and Alaska. Someday...
Glad to report your report is reported correctly. I'm amazed that we
had 2-4-6 in there... that's most unusual. Our best so far has been an
2-3 in Amarillo, Texas. As you can see, when you superimpose our 2-4-6's
coverage map on a USA map, we wind down your way but also, wind more
towards Louisiana than N.Mex. WJC makes a beautiful signal west. I am
finding this out through the many reports I've received.

about PK
just pass your
Best of luck

February 18, 1963.

MEMORANDUM

Preyor

-----0442
-----0700

no 2th Monday excerts.
///

SCHEDULE SUBJECT TO
CHANGE WITHOUT NOTICE.

SPECIAL EXCPT ON
4 MARCH FOR CDXC
(Canadian club)
FROM 0430-0500.

Enclosed you
will find a bit of
information about
the National Radio
Club. Perhaps you
will be interested

Radio Station WPGC
1421 Southern Ave S.W.
Washington, 19, D.C.

October 3 19 60

Mr. Norman L. Maguire

1420 Columbia Drive N. E.

Albuquerque, New Mexico

Dear DX'er ,

we are pleased to confirm your reception of Radio Station WPGC broadcasting on
August 29, 19 60 from 0617 am to 0630 am .

WPGC studios are located at Bradbury Heights , Maryland. This is at the southeast boundry
line that seperates Washington D.C. and the state of Maryland.

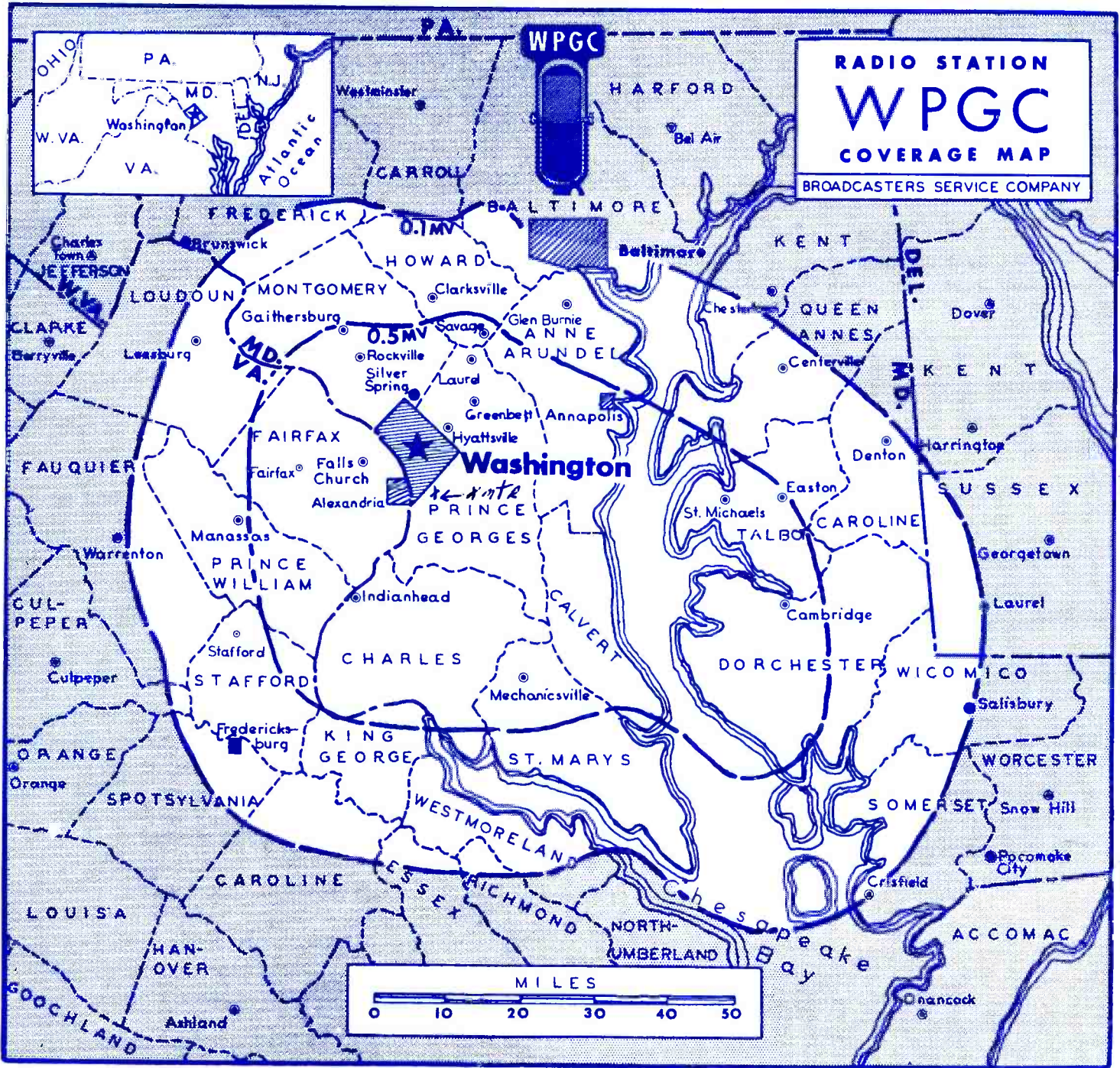
WPGC transmitter is located at Oakland , Maryland. This is one mile east of the WPGC
studios.

The WPGC transmitter is a Radio Corporation of America , Type BTA-10H. Our antenna system
consists of two vertical , uniform cross-section , guyed , series excited steel towers.
These towers are 165 feet (or 95.5 electrical degrees on 1580 Kc.) high. They are spaced
233.45 feet (or 135 electrical degrees on 1580 Kc.) from each other on a line bearing 20
degrees from true north. Our maximum signal is beamed 130 degrees from true north.

Sincerely Yours,

C. J. Farrell xmtx

WASHINGTON'S ONLY 10,000 WATT STATION



NOW 10,000 WATTS-- *THE MOST POWERFUL INDIE IN WASHINGTON & MARYLAND!*

WPGC Market Data	
POPULATION (Metropolitan Area)	2,108,772
RADIO HOMES	525,413
FARM RADIO HOMES	19,302
AUTOMOBILE RADIOS	499,657
GROSS INCOME (\$)	3,602,296
RETAIL STORES	8,624
RETAIL SALES (\$)	2,794,882



WASHINGTON 19, D. C.
JQrdn 8-6677

ASSOCIATED BROADCASTING CORPORATION

W T B O

CUMBERLAND, MD.

February 26, 1941

FRANK D. BECKER

PRESIDENT-GENERAL MGR.

CLEAR CHANNEL

800 KILOCYCLES-250 WATTS

Mr. Norman L. Maguire
101 Hope Street
Stamford, Conn.

Dear Mr. Maguire:

We have your letter of February 16, and the report therein.

We are pleased to advise that the schedule you sent is in accord with our log for that date, and thus to verify your report.

Thank you very much for your letter.

Cordially yours,

Charles Ray Sine
Charles Ray Sine
Chief Engineer
ASSOCIATED BROADCASTING
CORPORATION

CRS:ILE