



# *Delco*

**RADIOS FOR 1941**

**A GENERAL MOTORS VALUE**



*Delco*

**R A D I O S**

**F O R**

**1 9 4 1**

**A G E N E R A L M O T O R S V A L U E**





## DELCO MODEL R-1180

### CABINET

An achievement in beauty of design and advanced construction. Built of highly figured, costly walnut veneers, carefully matched and hand rubbed to a richly lustrous finish.

The upper side panels are of butt walnut. The top and front panels are of warmly colored heart walnut.

At the top of the side panels a decorative band has been added for contrast.

The lower sides of the cabinet are of heart walnut wrap-around construction. Grille splats are walnut veneered, the center splat is gracefully designed and finished in walnut.

### DIMENSIONS

Height 42 $\frac{1}{4}$ "; Width 29"; Depth 16 $\frac{5}{16}$ ".

### TUNING RANGE

Four bands—540-1600, 1600-4000, 5800-13000, 31 meter band, 9400 to 9800 kes. Covering standard broadcast, American and foreign, police, amateur and aviation plus spread band across entire dial on 31 meter band.

### TUBE COMPLEMENT

2-6SK7, 1-6SA7, 2-6SF5, 1-6H6, 4-6K6GT, 1-5U4G, 1-6U5.

### FEATURES

12 tubes, including tuning eye indicator • American and improved foreign reception, amateur, aviation and police calls • Delco built-in, rotatable Magnascope loop aerial • Separate built-in aerial for foreign reception • Powerful (double) push-pull audio system producing superlative tone and greater undistorted volume. (12 watts power output.) • Radio frequency stage signal booster for maximum sensitivity • Twelve-inch super electro-dynamic speaker • Tone control, four separate tone selections • Iron core stabilized I. F. transformers • Automatic bass compensation • Plug-in connection for record player, television or frequency modulation attachment • Large four-color, edge lighted, glass dial with special 31 meter spread band scale, for easier and more positive foreign tuning • Automatic electric tuning, 3 stabilized station buttons • 15:1 Ratio tuning for accurate manual station selection • Underwriters' approval • 105-125 volt, 50-60 cycle, AC operation.





The utmost in beauty of design and advanced construction. For extreme fidelity in tone reproduction and distinction in home furnishing.



## DELCO MODEL R-1179

### CABINET

A modernly styled console in which the beauty of design is enhanced by the use of carefully selected mahogany and walnut veneers.

The top end panels are built of solid woods so designed as to create a pleasing louvered effect.

The top, of center matched heart walnut, is gracefully rolled in a continuous piece to form the front panel.

The lower sides and front end rails are of highly figured heart walnut at the top of which a mahogany band has been used to obtain a blending of color tones.

Center grille splat is of walnut finish with a decorative design at each end finished in Queensland maple.

### DIMENSIONS

Height 40"; Width  $28\frac{3}{8}$ "; Depth  $15\frac{7}{16}$ ".

### TUNING RANGE

Three bands—540-1600, 1600-4000, 5800-18000 kcs. Covering standard broadcast, American and foreign police, amateur and aviation calls.

### TUBE COMPLEMENT

2-6SK7, 1-6SA7, 1-6H6, 2-6SF5, 2-6F6G, 1-5Y3G.

### FEATURES

9 tubes • American and improved foreign reception, amateur, aviation and police calls • Delco built-in rotatable Magnascope loop aerial • Separate built-in aerial for foreign reception • Push-pull audio system, for greater power output and finer tone • Radio frequency stage signal booster for maximum sensitivity • Twelve-inch super electro-dynamic speaker • Tone control—four separate tone selections • Iron core stabilized I. F. transformers • Automatic bass compensation • Plug-in connection for record player, television or frequency modulation attachment • Large four-color, edge lighted, glass dial • Automatic electric tuning, 6 stabilized station buttons • Underwriters' approval • 105-125 volt, 50-60 cycle, AC operation.





**A striking piece in any home setting. Tone quality and reception are the finest for maximum enjoyment of all programs.**



## DELCO MODEL R-1178

### CABINET

A smartly modern console cabinet distinctive in design. The wrap-around construction is used as in the higher priced models.

The top is of heart walnut with an ornamental scroll effect on the front edge that adds a pleasingly decorative touch.

The front panel is heart walnut with a band of mahogany at the lower edge.

Sides and front end rails are also heart walnut.

The base being of a darker shade of walnut creates a harmonious two-tone effect.

### DIMENSIONS

Height 38 $\frac{1}{4}$ " : Width 25 $\frac{3}{4}$ " : Depth 13 $\frac{3}{8}$ ".

### TUNING RANGE

Two bands—540-1600, 5800-18000 kes. Covers standard broadcast, American and foreign short wave stations.

### TUBE COMPLEMENT

2-6SK7, 1-6SA7, 1-6SQ7, 1-6K6GT, 1-5Y3G.

### FEATURES

6 tubes • American and foreign reception • Delco built-in Magnascope aerial • Separate built-in aerial for foreign reception • Radio frequency stage signal booster for maximum sensitivity • Twelve-inch electro-dynamic speaker • Tone control—3 separate tone selections • Iron core stabilized I. F. transformers • Automatic bass compensation • Plug-in connection for record player, television, or frequency modulation attachment • Large four-color, edge lighted, glass dial • Automatic electric tuning—6 stabilized station buttons • Underwriters' approval • 105-125 volts, 50-60 cycle, AC operation.





Another console set of beauty in appearance and perfection in tone.





## DELCO MODEL R-1186

### CABINET

An outstanding example of the modern furniture designing art, constructed of figured walnut and other woods hand rubbed to a lustrous finish. Side panels of heart walnut are rounded in smoothly flowing lines to form the front end rails.

The front panel is of highly figured heart walnut with a V matched Sapli veneer center.

The lid inside and out, also the control panel, are of heart walnut.

The decorative grille work in two-tone walnut finish adds the final touch to this modern cabinet styling.

### DIMENSIONS

Height 34"; Width 30"; Depth 16 $\frac{1}{8}$ ".

### TUNING RANGE

Two bands—540-1600, 5800-18000 kcs. Covering standard broadcast, American and foreign short wave stations.

### TUBE COMPLEMENT

1-6SA7, 1-6SK7, 1-6SQ7, 1-6SF5, 2-6K6GT, 1-5Y3G.

### FEATURES

7 tubes • American and foreign reception • Delco built-in Magnascope aerial • Separate built-in aerial for foreign reception • Pull-push audio system for greater power output and finer tone • Twelve-inch super electro-dynamic speaker • Tone control—four separate tone selections • Iron core stabilized I. F. transformers • Automatic bass compensation • Four-color, edge lighted, glass dial • Automatic push-button tuning—6 station buttons.

### SUMMARY OF RECORD PLAYER FEATURES

Smooth action automatic record changer for 10 or 12-inch records—capacity seven 12-inch records or eight 10-inch records. Top needle loading tone arm • Tone control—four separate tone selections • Illuminated record player compartment • On and off jeweled indicator • Automatic tone compensation especially designed for record reproduction.





**A luxurious Delco Combination Console for all true music lovers. Unexcelled reproduction from the airways or from records.**





## DELCO MODEL R-1185

**CABINET**—For those who enjoy recorded music and are critical in their cabinet tastes, here is a smart, modern, table model that will meet the most exacting demands. The cabinet is constructed of selected walnut. The wrap-around ends and front panel are of heart walnut with a decorative border around the cabinet above and below the control panel. The dial and speaker opening are framed in dark-toned walnut, bordered with a narrow gold line.

The lid is of heart walnut on both sides, the same kind of wood is also used for the motor board. Adequate cabinet space is provided for playing either ten or twelve-inch records without using a slotted back and with the lid closed. This feature adds greatly to the enjoyment of the record reproduction, especially at low volume level.

**DIMENSIONS**—Height  $10\frac{11}{16}$ " ; Width  $16\frac{3}{8}$ " ; Depth  $13\frac{3}{8}$ " .

**TUNING RANGE**—540 to 1600 kcs. providing reception for all standard broadcasts.

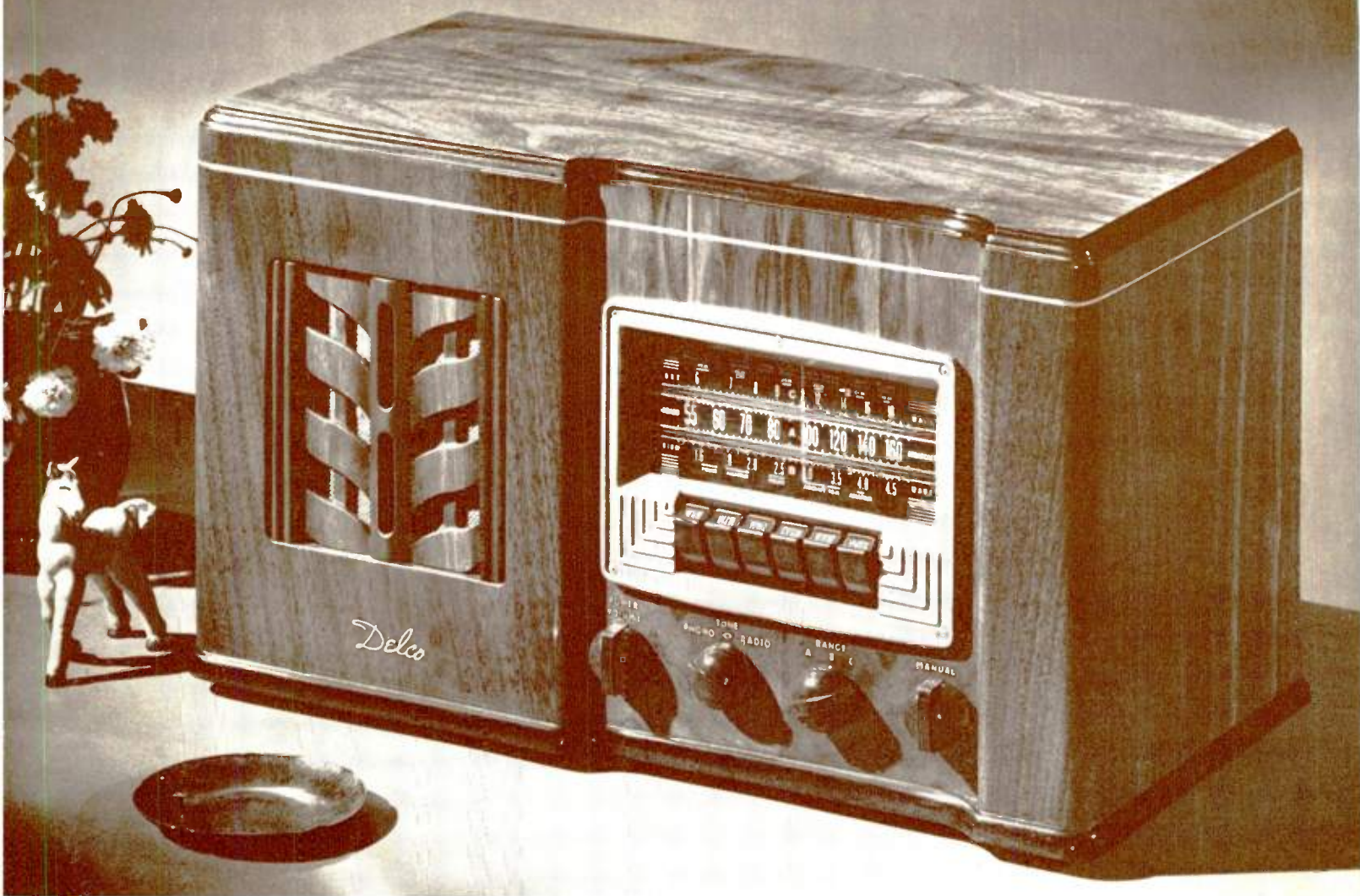
**TUBE COMPLEMENT** — 1-12SK7, 1-12SA7, 1-12SQ7, 1-50L6GT, 1-35Z5GT.

**FEATURES**—5 new low-drain tubes • Beam power tube • Delco built-in Magnascope aerial • Permanent magnet dynamic speaker • Tone control—two separate tone selections for either radio or record reproduction • Constant speed—self-starting motor • Plays either ten or twelve-inch records • Special audio circuit for record reproduction • Sensitive crystal pick-up • Needle hook holder and needle cup.

The ideal table set for combining radio reception and record playing. Tone quality and performance exceptional. A rare value.







## DELCO MODEL R-1177

**CABINET**—Designed for the discriminating buyer who wants the best radio available in a table cabinet. The beauty of this cabinet lies in the smoothly simple lines of the design.

The top is of beautifully grained heart walnut. The ends, front and front panel are also of heart walnut with a solid walnut front end rail. A narrow gold stripe around the top part of the cabinet adds a note of distinction to the simple design.

The speaker opening is partially concealed by a newly designed grille overlay that adds a musical touch to the design.

**DIMENSIONS**—Height 10 $\frac{1}{8}$ "; Width 17 $\frac{7}{8}$ "; Depth 9 $\frac{3}{16}$ ".

**TUNING RANGE**—Three bands—540-1600, 1600-4500, 5800-18000 kcs. Covering standard broadcast.

American and foreign short wave stations plus police, amateur and aviation calls.

**TUBE COMPLEMENT**—2-6SK7, 1-6SA7, 1-6SQ7, 1-6F6G, 1-5Y3G.

**FEATURES** — American and foreign reception, amateur, aviation and police calls • Delco built-in Magnascope aerial • Separate built-in aerial for foreign reception • Six-inch electro-dynamic speaker • Tone control—3 separate tone selections • Iron core stabilized I. F. transformers • Automatic bass compensation • Plug-in connection for record player, television or frequency modulation attachment • Four-color, edge lighted, glass dial • Automatic push-button tuning—6 station buttons • Underwriters' approval • 105-125 volt, 50-60 cycle, AC operation.

**A magnificent table model having all the principal features of the console sets. Extremely sensitive with high selectivity.**



## DELCO MODEL R-1176

**CABINET**—A handsome cabinet in modern styling. The top, of center matched heart walnut, is gracefully rolled to form the instrument panel. Sides are of solid wood finished in rich walnut. The speaker opening is concealed by walnut finished grille splats of one-piece construction.

**DIMENSIONS**—Height 10 $\frac{3}{8}$ "; Width 16 $\frac{1}{4}$ "; Depth 8 $\frac{7}{8}$ ".

**TUNING RANGE** — Two bands — 540-1600, 5800-18000 kes. Covering standard broadcast, American and foreign short wave stations.

**TUBE COMPLEMENT**—1-12SK7, 1-12SA7, 1-12SQ7, 1-50L6GT, 1-35Z5GT.

**FEATURES**—5 tubes • Standard broadcast, American and foreign short wave stations • Delco built-in Magnascope aerial • Separate built-in aerial for foreign reception • Permanent magnet dynamic 5-inch speaker • Tone control—bass and treble position • Iron core stabilized I. F. transformers • Connection for record player, television or frequency modulation attachment • Four-color, edge lighted, glass dial • Automatic tuning, using 6 newly designed "push down" buttons • Underwriters' approval • 110 volts, AC or DC operation.

Modern in style and has the same refinements of tone and performance as the larger models.







## DELCO MODEL R-1175

**CABINET**—A new and unusually fine design in a moderately priced model. Beautiful woods rubbed to a highly lustrous finish.

The roll-over top and ends are of heart walnut. The front panel of center matched heart walnut is decorated by a frame of solid mahogany.

**DIMENSIONS**—Height  $9\frac{1}{16}$ "; Width 14"; Depth  $7\frac{3}{8}$ ".

**TUNING RANGE**—540-1600 kcs. Providing reception for all standard broadcasts.

**TUBE COMPLEMENT**—2-12SK7, 1-12SA7, 1-12SQ7, 1-35L6GT, 1-35Z5GT.

**FEATURES**—6 tubes • Beam power tube • Delco built-in Magnascope aerial • Radio frequency stage signal booster for maximum sensitivity • Permanent magnet dynamic 5-inch speaker • Tone control—bass and treble position • Iron core stabilized I. F. transformers • Automatic tuning, using five newly designed "push down" buttons • Large four-colored dial • Underwriters' approval • 110 volts, AC or DC operation.

Attractive in appearance and offering unusual power and distance range in a table set. Full clear tone.



## DELCO MODEL R-1174

**CABINET**—Beautiful as a jewel case. The top, front panel and wrap-around ends are of highly grained oriental wood. A narrow black stripe around the top lends a decorative effect to the tasteful simplicity of the cabinet.

A fluted grille of harmonizing two-tone finish is used to conceal the speaker opening.

**DIMENSIONS**—Height 7 $\frac{7}{8}$ "; Width 12 $\frac{1}{16}$ "; Depth 6 $\frac{1}{2}$ ".

**TUNING RANGE**—540-1600 kcs. Providing reception for all standard broadcasts.

**TUBE COMPLEMENT**—1-12SK7, 1-12SA7, 1-12SQ7, 1-50L6GT, 1-35Z5GT.

**FEATURES**—5 tubes • Beam power tube • Delco built-in Magnascope aerial • Permanent magnet dynamic 5-inch speaker • Iron core stabilized I. F. transformers • Automatic tuning, using 5 newly designed "push down" buttons • Large four-colored dial • Underwriters' approval • 110 volt, AC or DC operation.

A set pleasing to the eye and ear. Distinctive styling, ample volume and power, life-like tone.







## DELCO MODEL R-1173

**CABINET**—A cabinet in step with modern styling trends. The top, of heart walnut, is gracefully rolled to form the cabinet ends. The front panel, of heart walnut, is bordered with a band of butt walnut on each side and shaded at the top in a darker color tone.

**DIMENSIONS**—Height 8 $\frac{1}{4}$ "; Width 12 $\frac{5}{8}$ "; Depth 6 $\frac{1}{8}$ ".

**TUNING RANGE**—540-1600 kcs. Providing reception for all standard broadcasts.

**TUBE COMPLEMENT**—1-12SK7, 1-12SA7, 1-12SQ7, 1-50L6GT, 1-35Z5GT.

**FEATURES**—5 new low-drain tubes (double purpose tubes provide seven tube performance) • Beam power tube • Delco built-in Magnascope aerial • Permanent magnet dynamic 5-inch speaker • Iron core stabilized I. F. transformers • Large four-colored clock type dial • Underwriters' approval • 110 volts, AC or DC operation.

A table set that reflects beauty in the simplicity of its lines. Has a clear, full tone and abundant volume.



## DELCO MODEL R-1172

**CABINET**—A molded cabinet finished in ivory and styled for the most exacting buyers.

**DIMENSIONS**—Height 6 $\frac{3}{4}$ "; Width 9 $\frac{3}{4}$ "; Depth 6".

**TUNING RANGE**—540-1600 kes. Providing reception for all standard broadcasts.

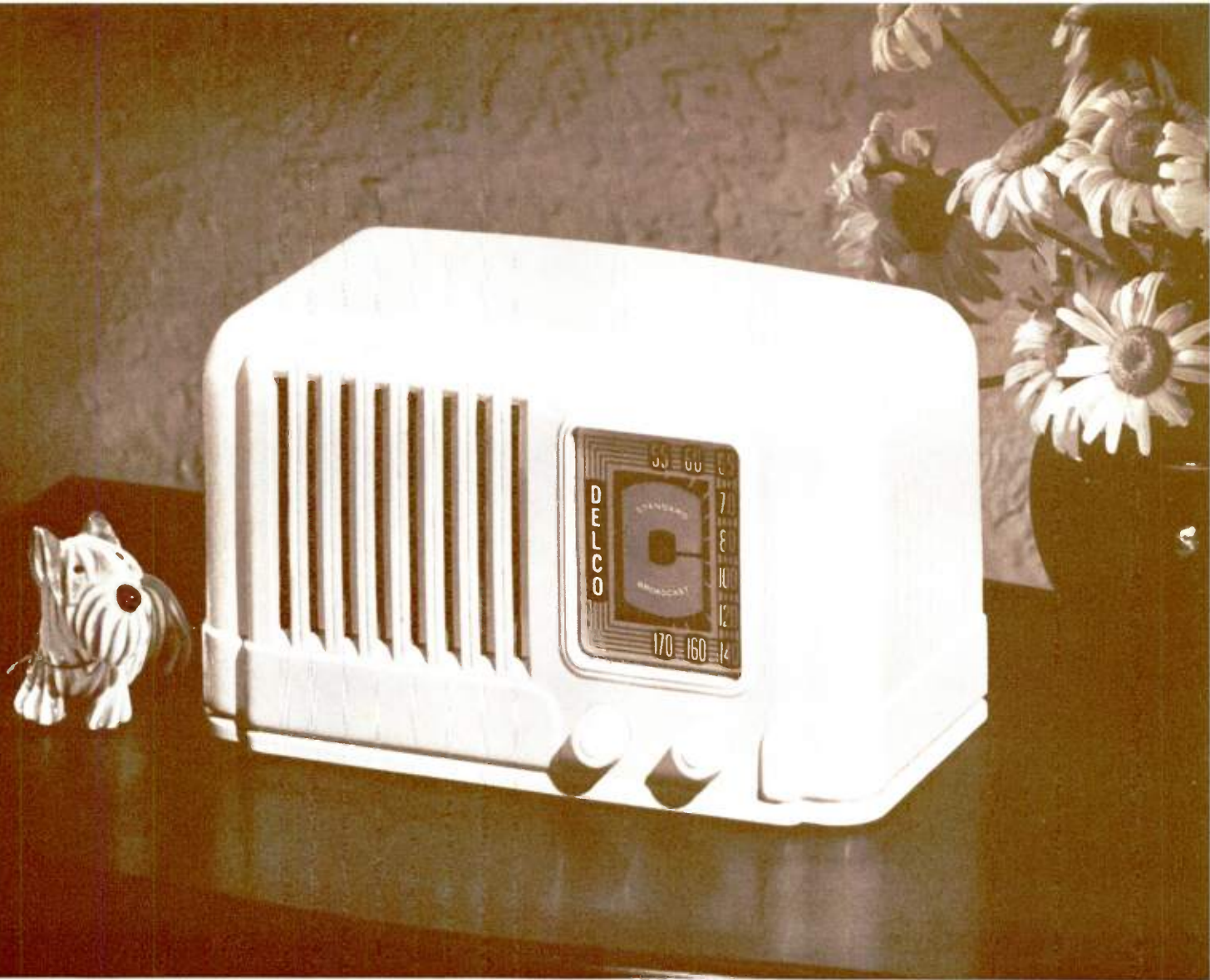
**TUBE COMPLEMENT**—1-12SK7, 1-12SA7, 1-12SQ7, 1-50L6GT, 1-35Z5GT.

**FEATURES**—5 new low-drain tubes (double purpose tubes provide seven tube performance) • Delco built-in Magnascope aerial • Permanent magnet dynamic 5-inch speaker • Iron core stabilized I. F. transformers • Large four-colored clock type dial • Underwriters' approval • 110 volts, AC or DC.

**DELCO MODEL R-1171** —Same specifications as R-1172 but finished in a warmly colored mottled mahogany.







## DELCO MODEL R-1170

**CABINET**—A compact molded cabinet, ivory finish, neatly styled, attractive in appearance, solves the problem where space is a consideration.

**DIMENSIONS**—Height  $5\frac{1}{8}$ "; Width  $8\frac{5}{8}$ "; Depth  $4\frac{1}{4}$ ".

**TUNING RANGE**—540 to 1720 kes. Providing reception for all standard broadcasts plus one police band.

**TUBE COMPLEMENT**—1-12SK 7, 1-12SA 7, 1-12SQ 7, 1-50L6GT, 1-35Z5GT.

**FEATURES**—5 new low-drain tubes • Beam power tube • Delco built-in Magnascope aerial • Sensitive electro-dynamic speaker • Easy to read 3-color glass dial • Underwriters' approval • 110 volts, AC or DC operation.

**A tiny set that saves space without losing any efficiency in performance. Popular as a second radio in the home.**



## DELCO MODEL R-1405 PORTABLE

**CABINET**—The cabinet is of luggage type construction, light in weight and attractively covered in a two-tone tan woven fabric, perfectly balanced for easy carrying.

**TUNING RANGE**—540 to 1720 kcs. Providing reception for all standard broadcasts plus one police band.

**TUBE COMPLEMENT**—1-1A7GT, 1-1N5GT, 1-1H5GT, 1-3Q5GT, 1-35Z5GT.

**BATTERIES REQUIRED**—"B" Batteries, 2-45-volt (plug in type). 482 Eveready or other manufacturers' equivalent.

"A" Battery, 1-1.5-volt (plug in type). 743 Eveready or other manufacturers' equivalent.

**BATTERY DRAIN**—"A" Battery 250 milliamperes at 1.5 volts.

"B" Battery 11.5 milliamperes.

**FEATURES**—5 tubes, using two double-purpose tubes providing seven tube performance • Delco built-in Magnascope aerial • Permanent magnet dynamic 5-inch speaker • Designed for three-way operation—batteries, 110 volt AC, or 110 volt DC • Low operating cost • A powerful superheterodyne using six tuned circuits for finer sensitivity • Positive on and off indicator.

The smart, trim "Portable" model. Today a vital part of your luggage wherever you go. Sets a new standard in performance.

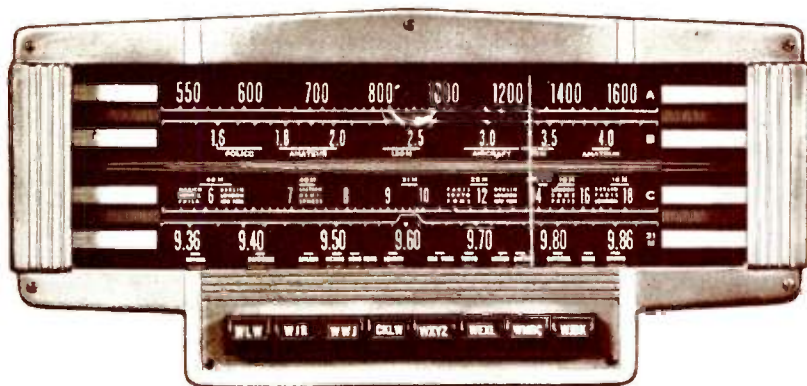
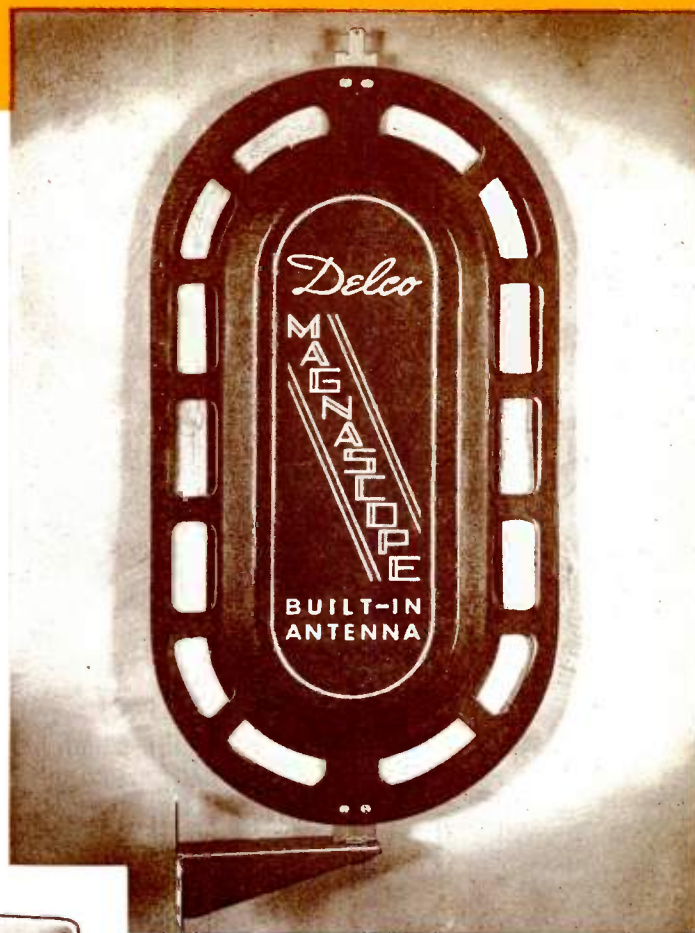




# FEATURES

## MAGNASCOPE—Built-in Aerial

All 1941 Delco Radios are equipped with the Magnascope-rotatable type on de luxe models—an improved, highly efficient, built-in “Litz” wire antenna system. The Magnascope assures superior performance and, besides, eliminates antenna and ground wires, unsightly antenna support poles and the costly installation problem. Also, because of the Magnascope the radio may be placed in any part of the room where it will appear best with the furniture, whereas usually the furniture has to be arranged around the radio.

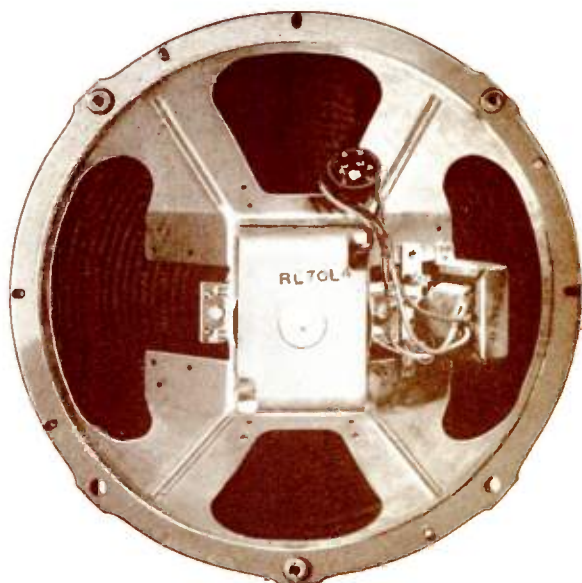


## SPREAD BAND TUNING

A new kind of tuning that brings in overseas short wave stations with the same tuning ease as local stations. The majority of European high powered short wave stations have centered their broadcasts on the 31 meter band. Spread band tuning makes it possible to concentrate the performance and obtain peak efficiency on this band. This likewise eliminates the necessity for “hair line” tuning and provides easy logging of short wave stations. Stations formerly occupying less than one-half inch of the dial have been spread to cover eight inches of the dial to make tuning easy and facilitate identification.

## SPEAKER

All 1941 Delco Console Radios and the Phonograph Combination Console model are equipped with a full 12-inch improved electro-dynamic speaker. Vital improvements give a clearer, mellow, life-like tone at all volume levels.





# **DELCO HOME RADIO**

**FOR ENTERTAINMENT — CONVENIENCE —  
BEAUTY — QUALITY . . .**

When you buy a home radio you are, to a certain extent, paying for entertainment. Therefore, it is important that you get uninterrupted reception. For trouble-free performance we suggest Delco.

Convenience is a consideration to most people when they contemplate buying a new radio—it may be weather reports they want, or perhaps the correct time, or a political speech. To some, the latest news bulletins are important. For the best in automatic push-button tuning, for your convenience, buy Delco.

Beauty of furniture design is something you have a right to expect in a home radio. Beauty of tone must be present if you are to get the maximum pleasure from your set. Harmoniously beautiful design and finish, plus finely mellow tone quality are yours when you select a Delco.

Quality in both materials and workmanship has always been the first consideration in the manufacture of Delco Home radio. It is of paramount importance to us that the name Delco—long a synonym for excellence in the automotive and appliance market—be placed only on the best obtainable in a home radio to live up to the responsibility involved when we call it a “General Motors Value.”





