

Radio Foto Log

15¢

PUBLISHED BY NATIONAL UNION RADIO CORPORATION
57 STATE STREET NEWARK, NEW JERSEY



MARTHA TILTON

Vocal Star of Benny Goodman's Swing Band



TELEVISION
IN THE HOME



PROFESSOR QUIZ



CHARLIE MCCARTHY
AND ANDREA LEEDS

*You can
play any night*
if your
**RADIO'S
RIGHT!**

CBS
FOR BEST RECEPTION

NATIONAL UNION RADIO TUBES
MUTUAL
FOR BEST RECEPTION

NATIONAL UNION RADIO TUBES
NBC
FOR BEST RECEPTION

**NEWS
COMEDY
DRAMA**

**SYMPHONY
DANCE BANDS
OPERA**

NATIONAL UNION

RADIO TUBES AND CONDENSERS

*Ask us about NEW SETS
or Call us for*

EXPERT RADIO SERVICE



Radio Foto Log

PUBLISHED BY NATIONAL UNION RADIO CORPORATION
57 STATE STREET NEWARK, NEW JERSEY

Manufacturers of National Union Radio Tubes and Parts

EDITED BY SAMUEL KAUFMAN

The Listener Always Wins

PROGRAM executives of leading radio stations and advertising agencies are ever on the alert for new ideas that will win mass audiences. The competition to win and hold listeners to air features is always keen. Keen rivalry is demonstrated between sponsors of similar wares as well as between advertisers who maintain simultaneous broadcasting schedules.

Radio editors of newspapers and magazines have often indicated that their readers disliked two stellar hours on the air at the same time inasmuch as they were forced to forego one in favor of the other and it was difficult to make a choice.

However, sponsors haven't got much choice in the matter of time. True, there are twenty-four hours to the day but most big advertisers desire the evening hours between 7 and 10 o'clock when they believe they can reach the biggest possible audiences.

Rather than the listener *losing* one good program by listening to another excellent feature on the air at the same time, he should remember that the high standard of the broadcast to which he's listening is maintained by the scheduling of a high-calibre hour on the other station or network. He's not losing anything. Rather, he's given a wider choice of program fare and the odds of giving him a program he'll enjoy are considerably in his favor.

From season to season, the main classifications of radio programs retain large followings they have earned through the years. Dance bands, comedy, drama, news, variety, classical music and other headings are never replaced. But new ideas as well as new stars do constantly pop into the radio schedules and some of them reach the high-salary and high-popularity brackets in very short time.

Audience-participation shows have been gaining larger and larger followings since they came into being on a big scale a couple of seasons back. Amateur hours, under this heading, were the opening guns in the campaign to recruit Mr. Next Door Neighbor for microphone appearances. Now the lead in audience participation has been taken by the many quiz, spelling bee and "what do you know?" features that stud program schedules.

But the heavy draw of new ideas—even the smash hits—doesn't dig into the popularity of such perennial headliners as Jack Benny, Rudy Vallee, Bing Crosby and the many other topnotch stars who helped make broadcasting the leading entertainment medium it now is.

The intriguing thing about radio listening is that it always brings surprises and thrills in new offerings as well as reliably presenting the best of the old-established stars. And listeners, through experience, know that forthcoming features are "sure things" in the way of good, wholesome entertainment.



Jack Benny Comes to Town

KNOWLEDGE IS FUN

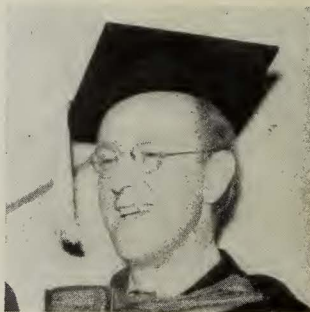
YOU may never have thought so when you went to school. But since radio quiz programs came into popularity, it's been fun indeed to participate in the "what do you know?" games. Sidewalk interviews, studio spelling and question bees, word games and even musical-guessing programs have soared the heights of radio fame, many of these features ranking among the most popular (according to surveys) on the air. One reason why the listener gets an added kick out of the quizz features is that he has the chance of participating in the mike game himself. He can test his own wits against the microphone contestants. But he must remember that he has two advantages. He can look the answer up in dictionaries, atlases and other reference books, and there is no chance of mike-fright.



"True or False?" asks Dr. Harry Hagen after he reads a statement. No, the placard-toting men are not pickets. It's customary on quiz programs to have the contestants wear their names on cards over their chests so that the master-of-ceremonies can address them.



Left to right: Max Eastman, author, humorist and raconteur, who heads the CBS Word Game; Professor Quiz (Craig Earl) paying off a winner with silver dollars, and Paul Wing, master of the NBC Spelling Bee.



Three topnotch cross-examiners: (left to right): "Uncle Jim" McWilliams of Question Bee fame; Kay Kyser, the orchestra leader who directs the musical quizz show known as the Kollege of Musical Knowledge, and Franklin P. Adams ("F. P. A.") of NBC's "Information Please."

VOX POP



THIS program, conducted by Parks Johnson and Wallace Butterworth, was one of the first of the quiz programs and claims to be the first network show of its type. The show differs from the other question-and-answer periods in that it is broadcast from public and semi-public spots and never from a studio. It used to go on the air from street corners until traffic congestion caused it to be moved into hotel lobbies, railroad terminals and the like. Passers-by, unrehearsed, are recruited from the crowd that gathers around the mike and the result is an amusing, informative quiz program which is greatly enhanced by the spontaneous humor arising from Johnson's and Butterworth's banter with their guests. Turn over to the next page and see how you would score if you happened to be selected for the Vox Pop broadcast. Parks Johnson selected the questions (and parenthetical answers) especially for readers of Radio Foto Log.

Here they are: Vox Poppers Parks Johnson and Wallace Butterworth.



Left: They're never too young to know the answer! Here's a five-year-old doing his stuff! Right: The English vicar who married the Duke and Duchess of Windsor—Rev. Robert Anderson Jardine—and a Chinese nurse meet for a session of Q's and A's with Johnson.



Even a cigar store Indian pops up at the Vox Pop mike, but we doubt whether he was interviewed. Right: Harry M. Nanos—noted for his likeness to the late Will Rogers—takes to the air with Parks and Wally.

WHAT DO YOU KNOW?

You've often had the answer while listening at home much quicker than the fellow at the mike. Here's a specimen mike quiz prepared by Parks Johnson. Try it with your family and friends and figure how you would have fared if you faced the Vox Pop mike.

QUESTIONS

1. A monkey climbing a greased pole 30 feet high goes up 3 feet in 10 seconds. He slips back 2 feet in 5 seconds. How long will it take him to reach the top?
2. Quickly: 11 is 1/6th of 3 times what number?
3. Is the half of a hundred the same as 100 divided by 1/2?
4. If you stand on your head, face to the East, in which direction is your right shoulder pointed?
5. Would it be the same if you were standing on your feet, facing East?
6. If you drive 60 miles at 20 m.p.h. going, and return at 30 m.p.h., what is your "AVERAGE" speed for the 120 miles?
7. Two candles, one will burn 4 hours and the other will burn five hours. Both are lighted simultaneously. Both are extinguished when what remains of one is exactly four times as long as what remains of the other. How long had the candles been burning?
8. If I work the first day for \$100, the second day for \$50, the third day for \$25, and so on . . . how many days will I work before I have earned \$200?
9. You have an engagement for 12 noon. Your friend phones that he must "Advance" the engagement a half hour. At what time will you meet him?
10. In 15 seconds tell me how to change a twenty-dollar bill into dollars and half-dollars so that I will have ONE MORE half-dollar than I will dollars.
11. If "This and That" plus one-half of "This and That" equals 11, how much is "This and That"?
12. If a person is consistently inconsistent, would you say that person is consistent or inconsistent?
13. If a coat is turned inside out, would the right arm still go into what was the right sleeve?
14. Would you think a "Hugger-mugger" is a loving sort of a person?
15. Which is farthest West: Detroit, Michigan—Pensacola, Florida, or Indianapolis, Indiana?
16. Honestly, DO you know how many of your own teeth you now have in your mouth?
17. A bicycle rider travels a mile in three minutes WITH the wind; he returns over the same course in four minutes AGAINST the wind. How fast could he make the mile if there were NO wind?
18. Which is the longer, a cigarette or a stick of chewing gum?
19. Is the Sahara desert flat, rolling or mountainous?
20. What abbreviations for State names make complete words?
21. I start work Monday morning at \$1 per day. You start work Tuesday morning at \$2 per day. How many days will you work before you will have earned TWICE as much as I?
22. How many times per day does the ordinary watch tick?
23. In the line: "Little Miss Muffet sat on a TUFFET" . . . what is a "tuffet"?
24. Quickly . . . count from 10 to 1, backwards.
25. How many STATES in the United States?
26. Do the words "In God we Trust" appear on all current U. S. Coins?
27. On every package of ordinary pins there appears the initials: "S. C.", "M. C." or "B. C.". What do these mean?
28. If a chicken has a gizzard what has an "Izzard"?
29. If the laundry goes out Monday morning and is returned Thursday noon, what is the minimum number of shirts a man must have in order to wear a clean shirt each morning?
30. Assume it takes 30 seconds to toast one side of a slice of bread. Now, in an old-style two-slice toaster, what's the shortest time it will take to toast THREE slices of bread on BOTH sides?

31. If Tom, Dick and Harry agree to lunch together, each bearing his own share of the cost, what about this situation. Tom brings 6 eggs; Dick brings 3 eggs; Harry brought NO eggs, but tossed 15c on the table. HOW should the 15c be divided?
32. Take an ordinary sheet of letter paper, business size. Tear it in two, and stack the halves on top of each other. Do this fifty times. How high will the stack be after the fiftieth tear and stacking?
33. A barrel has three spigots. They empty the barrel in 15, 30 and 45 minutes, respectively. If ALL are opened at the same time, how long will it take to empty the barrel?

TRICKS TRIED AGAINST DESIGNATED TIME LIMITS:

- Say Alphabet backward in 30 seconds.
Spell one's full name backward in 15 seconds.
Say months of year backward in 10 seconds.
1. 6 minutes and 55 seconds. He uses 28 upward strokes or 280 seconds; 27 back slips or 135 seconds, total 415 seconds, or 6:15.
 2. (22).
 3. No.
 4. North.
 5. No.
 6. NOT 25, but 24 miles per hour.
 7. 3 hours and 45 min.
 8. Never.
 9. Webster says "Advance" to make earlier, as an event or date, so you would meet at 11:30—though personally, I would not show up until 12:30!
 10. Fourteen halves, and 13 dollars.
 11. 7-1/3, 3/2 equals 11; 1/2 equals 1/3 of 11, or 3-2/3; 2/2, or "This and That" then equals 2 x 3-2/3, or 7-1/3.
 12. (2).
 13. No.
 14. Hugger-Mugger, according to Webster is: "privacy or secrecy about hugging or mugging", "confusion, a muddle". At any rate, NO "vacy, secrecy, or in privacy, secrecy." Or, also, "Hugger-Mugger, according to Webster is: "privacy or secrecy about hugging or mugging".
 15. Pensacola, Florida, farthest West.
 16. Estimated not one in a thousand knows.
 17. NOT 3 1/2 minutes, but 3 minutes, 26 seconds.
 18. The stick of chewing gum.
 19. The Sahara desert mountains up to 10,000 feet above sea level—see Webster's Unabridged.
 20. Ark; Ill; Ida; La; Me; Mass; Miss; Neb; Ore; O; Kent; Wash.
 21. Never.
 22. 432,000 times per 24-hour day.
 23. An old English measure, the equivalent of half-bushel. She probably sat on the inverted receptacle.
 24. Ah, ah . . . it should be 1, 2, 3, etc.
 25. Technically, forty-four States and four "Commonwealths", viz: Kentucky, Massachusetts, Pennsylvania and Virginia.
 26. NO, they do not appear on either five-cent piece, or the Indian head one-cent coin.
 27. Small, medium or Big CORKIN. Corkin being an old Scotch-English term meaning "Pin".
 28. Our alphabet . . . the letter "Z".
 29. Minimum of eleven shirts.
 30. 1 1/2 minutes, not 2 minutes. Toast one side of No. 1 and No. 2. Then toast final side of No. 1, and one side of No. 3; finally toast remaining sides of Nos. 2 and 3.
 31. TOM gets the 15c, as Harry ate 3 of Tom's 6 eggs!
 32. OVER 22 million miles high!
 33. 8-2/11ths minutes, though many without thinking will answer from 15 to 30 minutes!

ANSWERS (No fair peekin')

Mr. Next Door Neighbor Takes the Air

THE quiz programs mentioned on the preceding pages are but one of several popular forms of audience-participation shows. There are amateur hours, public forums and comedy and variety hours in which the listener is heard from by voice, applause and laughter. Audience-participation shows have gained tremendous popularity probably because listeners like to hear from Mr. Next Door Neighbor as well as from professional broadcasters.



Tickets to broadcasts are in great demand



"America's Town Meeting of the Air" has been cited as the best example of freedom of the air. Here, the listener can debate with the celebrities on the platform on topics of the day. George V. Denny, Jr., is shown at the left giving the floor to a questioner who (above) is then taking it.



Jerry Belcher (left) takes his mike right into homes of listeners. Center: Lyman Bryson (at head of table) invites "typical citizens" to dinner for the extemporaneous "People's Platform" feature of CBS. The mikes are hidden under napkins to keep the guests immune of mike-fright. Right: Major Bowes and his amateurs hold their grip on popularity. Here he is with a fellow playing two musical saws.



The applause and laughter of a typical studio audience such as the one portrayed on the right are measured by the "applause meter" shown above.





KING COMEDY STILL REIGNS

FROM the very beginning of radio entertainment, comedy has never been displaced as a smash hit classification on stations' schedules. Listeners like to laugh and the broadcasters and sponsors spare no expense in obtaining the world's best funsters. Many of the comedy stars have held their popularity through the years but declare it's a tough assignment to get new material for every broadcast.

George Burns and Gracie Allen, one of the highest-paid comedy teams in the land.



"Feud for Thought" might be the caption of the photo at the left showing Jack Benny and Fred Allen meeting. Above: "The Bee or not The Bee—that is the question" Jack seems to wonder as he raises his bow.



Left: Bob Burns, who skyrocketed to comedy stardom and who many believe comes closest to filling the philosopher-comedy role of the late Will Rogers. Above: Two of the old reliables, Al Jolson and Joe Penner. In center oval: Oliver Wakefield, the English comedian who scored favorably in his American broadcasts.



Top: Two popular comedy pairs—Marion and Jim Jordan (Fibber McGee and Molly) and (right) Stoopnagle and Budd. The latter pair, whose real names are F. Chase Taylor and Wilbur Budd Hulick, have popped up solo in recent seasons but singly or doubly, they're great fun!



Parkyakarkas (Harry Einstein), The Mad Russian (Bert Gordon) and the man who introduced both to big-time broadcasts—Eddie Cantor.



Left: Pick and Pat (Pick Malone and Pat Padgett) talk things over with their production man—Frank MacMahon.



Above: Teddy Bergman and Jack Haley who add merriment to the airwaves. Right: The Stroud Twins. Clarence brings the mike to brother Claude. The twins have scored sensationally with Charlie McCarthy.



Left: Kaltenmeyer's Kindergarten has a recess. Left to right, Professor August Kaltenmeyer (Bruce Kamman), Izzy Finkelstein (Johnny Wolf), Percy Van Schuyler (Merrill Fugit), Cornelius Callahan (Billy White) and Yohnny Yohnson (Thor Ericson). Above: Sam Hearn, better known as Schlepperman whose "Hullo, Stranzer" remark is a famous tag-line.



The movies are the source of considerable comedy material. Andy Devine and Charles Butterworth (above) are popular mike performers. Left: "Tim and Irene"—Tim Ryan and Irene Noble, do a comedy-ventriloquist routine for the camera.



Bob Hope used the air as a short cut to screen stardom after many years on the stage. He's shown at the left with his comely nemesis, Honeychile. He's known to change his mike partners from season to season, so it's not always the same Honeychile you hear. Above: Billy House, star of "The Laugh Liner" and Cal Tenny, a youngster who, like Bob Burns, has been nominated as a successor to the late Will Rogers.

KID STARS AND KID PROGRAMS

A LARGE share of each day's program schedule is devoted to features of especial appeal to youngsters. Sponsors feel that if they reach the children with good programs they are building sales for the future. Network standards for children's programs are very high and each new feature must pass a board of experts on child welfare and psychology.



Young Deanna Durbin who followed her radio success with film triumphs has earned a grown-up as well as juvenile following.



Walter Tetley, veteran child dramatic performer, who now shares time between radio and talkie mikes. Hollywood scouts signed him after his spectacular supporting roles with leading air stars. Right: Madge Tucker, director of NBC's children's features and discoverer of many talented youngsters.



Irene Wicker, radio's famous "Singing Lady". Below: Uncle Don (Donald Carney), popular children's program story-teller, singer, pianist and master-of-ceremonies.



"Jolly Bill" Steinke, conductor of a novel junior news program, and Hendrick Willem Van Loon, author and artist, who is as popular with child listeners as with grown-ups, a knack few writers or broadcasters can achieve.



A LITTLE BIT OF EVERYTHING

IT'S a standard gag around the studios that whenever a sponsor has a lot of money to spend on an airshow, he auditions all types of programs and finally winds up with a band, a comedian, a vocal star, a dramatic sketch and a master-of-ceremonies, or, in other words, a variety show. It's not always a sure-fire formula but there are many exceptional hit combinations under the heading of "Variety."



Don Ameche, popular singer, actor and master-of-ceremonies of the Chase & Sanborn Hour.



Leaders of three top-notch variety shows. Left to right: Rudy Vallee, Kate Smith and Bing Crosby, all of whom are versatile entertainers as well as program directors.



It's "Good News" to many when the program of that name hits the air. Four of its headliners are shown above: Left to right: Frank Morgan, the hesitant conversationalist of the films; Hanley Stafford, the exasperated daddy of Baby Snooks; Meredith Willson, musical director, and Robert Taylor, the movie star serving as master-of-ceremonies. Right: Ben Bernie, graduated from bandsman to program "m.c." is shown with Sophie Tucker.



Fanny Brice, veteran of the musical comedy and vaudeville stages, in her Baby Snooks characterization—a radio sensation.

DON'T BE YOURSELF!

A FEW radio entertainers have proved that it pays to follow that slogan. In recent seasons, persons who could do exceptional stunts with their voices won lucrative long-time contracts. Ventriloquism, mimicry and other vocal oddities, all of which were once thought unsuitable for the air, are now acknowledged smash-hit formulas.



That impish but lovable Charlie McCarthy and his master (?), Edgar Bergen, try out a script. Below: Bergen shows that even a ventriloquist's dummy demands a wardrobe suited to his status.



Left: Walt Disney, creator of Mickey Mouse, Donald Duck and numerous other imaginary cartoon characters who magically come to life on air programs. Center: Arthur Boran, a first-rate radio mimic who can impersonate the air's "great." Right: Tommy Riggs whose vocal creation of Betty Lou brought him nation-wide fame.

BROADCASTING STATIONS OF THE UNITED STATES

Call Letters	Location	Frequency (K C.)	Power (Watts)
KABC	San Antonio, Tex.	1420	100-250
KABR	Aberdeen, S. Dak.	1420	100
KADA	Add, Okla.	1200	100
KALB	Alexandria, La.	1210	100
KALE	Portland, Ore.	1300	1000
KAND	Corsicana, Tex.	1310	100
KANS	Wichita, Kans.	1210	100
KARK	Little Rock, Ark.	890	500-1000
KARM	Fresno, Calif.	1310	100
KASA	Elk City, Okla.	1210	100
KAST	Astoria, Ore.	1370	100
KATE	Albert Lea, Minn.	1420	250
KAWM	Gallup, N. Mex.	1500	100
KBIX	Muskogee, Okla.	1500	100
KBKR	Baker, Ore. (C.P.)	1500	100
KBND	Bend, Ore. (C.P.)	1310	100-250
KBPS	Portland, Ore.	1420	100
KBST	Big Spring, Tex.	1500	100
KBTM	Jonesboro, Ark.	1200	100
KCKN	Kansas City, Kans.	1310	100
KCMC	Texarkana, Tex.	1420	100-250
KCMO	Kansas City, Mo.	1370	100
KCRC	Enid, Okla.	1360	250
KCRJ	Jerome, Ariz.	1310	100-250
KDAL	Duluth, Minn.	1500	100
KDB	Santa Barbara, Calif	1500	100-250
KDFN	Casper, Wyo.	1440	500
KDKA	Pittsburgh, Pa.	980	50000
KDLR	Devils Lake, N. Dak.	1210	100
KDNC	Lewistown, Mont. (C.P.)	1200	100-250
KDNT	Denton, Tex.	1420	100
KDON	Monterey, Calif.	1210	100
KDTH	Dubuque, Iowa (C.P.)	1340	500
KDYL	Salt Lake City, Utah	1290	1000
KECA	Los Angeles, Calif	1430	1000-5000
KEEN	Seattle, Wash.	1370	100
KEHE	Los Angeles, Calif.	780	1000-5000
KELA	Centralia, Wash.	1440	500
KELD	N. of Eldorado, Ark	1370	100
KELO	Sioux Falls, S. Dak.	1200	100
KERN	Bakersfield, Calif.	1370	100
KEUB	Price, Utah	1420	100
KEX	Portland, Ore.	1180	5000
KFAB	Lincoln, Nebr.	770	10000
KFAC	Los Angeles, Calif	1300	1000
KFAM	St. Cloud, Minn.	1420	100
KFAR	Fairbank, Alaska (C.P.)	610	1000
KFBB	Great Falls, Mont.	1280	1000-5000
KFBI	Abilene, Kans.	1050	5000
KFBK	Sacramento, Calif	1490	5000
KFDM	Beaumont, Tex.	560	500-1000
KFDY	Brookings, S. Dak.	780	1000
KFEL	Denver, Colo.	920	500
KFEO	St. Joseph, Mo.	680	2500
KFGO	Boone, Iowa	1370	100
KFH	Wichita, Kans.	1300	1000-5000
KFI	Los Angeles, Calif.	640	50000
KFIO	Spokane, Wash.	1120	100
KFIZ	Fond du Lac, Wisc.	1420	100
KFJB	Marshalltown, Iowa	1200	100-250
KFJI	Klamath Falls, Ore.	1210	100
KFJM	Grand Forks, N. Dak.	1410	500-1000
KFJR	Portland, Ore.	1300	500
KFJZ	Fort Worth, Tex.	1370	100-250
KFKA	Greeley, Colo.	880	500-1000
KFKU	Lawrence, Kans.	1220	1000-5000
KFWF	Shenandoah, Iowa	890	500-1000
KFOR	Lincoln, Nebr.	1210	100-250
KFOX	Long Beach, Calif.	1250	1000
KFPL	Dublin, Tex.	1310	100-250
KFPW	Ft. Smith, Ark.	1210	100
KFPY	Spokane, Wash.	890	1000-5000
KFOD	Anchorage, Alaska	780	250
KFRG	San Francisco, Calif.	610	1000-5000
KFRQ	Longview, Tex.	1370	250
KFRU	Columbia, Mo.	630	500-1000
KFSB	San Diego, Calif.	600	1000
KFSG	Los Angeles, Calif.	1120	500-2500
KFUO	Clayton, Mo.	550	500-1000
KFVD	Los Angeles, Calif.	1000	1000
KFVS	Cape Girardeau, Mo.	1210	100-250
KFWB	Hollywood, Calif.	950	1000-5000
KFXD	Nampa, Idaho	1200	100-250
KFXJ	Grand Junction, Colo.	1200	100-250
KFXM	San Bernardino, Calif.	1210	100
KFUO	Clayton, Mo.	550	500
KFYU	Lubbock, Tex.	1310	100-250
KFYR	Bismarck, N. Dak.	550	1000-5000
KGA	Spokane, Wash.	1470	5000
KGAR	Tucson, Ariz.	1370	100-250
KGB	San Diego, Calif.	1330	1000
KGBU	Ketchikan, Alaska	900	500
KGBX	Springfield, Mo.	1230	500
KGCA	Decorah, Iowa	1270	100
KGCI	Coeur d'Alene, Idaho (CP)	1200	100
KGCU	Mandan, N. Dak.	1240	250
KGCX	Wolf Point, Mont.	1450	1000
KGDE	Fergus Falls, Minn.	1200	100-250
KGDY	Stockton, Calif.	1100	1000
KGDV	Huron, S. Dak.	1340	250

NOTE: C. P. after station location, indicates construction permit has been issued.

Call Letters	Location	Frequency (K C.)	Power (Watts)
KGEE	Sterling, Colo.	1200	100
KGER	Long Beach, Calif	1360	1000
KGEZ	Kalispell, Mont.	1310	100
KGFF	Shawnee, Okla.	1520	100-250
KGFI	Brownsville, Tex.	1500	100-250
KGFL	Los Angeles, Calif.	1200	100
KGFM	Roswell, N. Mex.	1370	100
KGFW	Kearney, Nebr.	1310	100
KGFX	Pierre, S. Dak.	630	200
KGHC	San Francisco, Calif.	1420	100
KGHF	Coffeyville, Kans.	1310	1000
KGHI	Albuquerque, N. Mex.	1230	1000
KGHF	Publico, Colo.	1320	500
KGHI	Little Rock, Ark.	1200	100-250
KGHL	Billings, Mont.	780	1000-5000
KGIR	Butte, Mont.	1340	1000-2500
KGIW	Alamosa, Colo.	1420	100
KGKB	Tyler, Tex.	1500	100-250
KGKL	San Angelo, Tex.	1370	100-250
KGKY	Wichita Falls, Tex.	570	250-1000
KGLG	Scottsbluff, Nebr.	1500	100-250
KGLU	Mason City, Iowa	1210	100-250
KGLU	Safford, Ariz. (C.P.)	1420	100-250
KGMB	Honolulu, Hawaii	1320	1000
KGNC	Amarillo, Tex.	1410	1000-2500
KGNF	North Platte, Nebr.	1430	1000
KGNO	Dodge City, Kans.	1340	250
KGO	San Francisco, Calif.	790	7500
KGU	Honolulu, Hawaii	750	2500
KGVL	Greenville, Tex. (C.P.)	1200	100
KGVO	Missoula, Mont.	1260	1000
KGW	Portland, Ore.	620	1000-5000
KGY	Olympia, Wash.	1210	100
KHBC	Hilo, Hawaii	1400	250
KHBB	Okmulgee, Okla.	1210	100
KHJ	Los Angeles, Calif.	900	1000-5000
KHO	Spokane, Wash.	590	1000-5000
KHSL	Chico, Calif.	1260	250
KHUB	Watsonville, Calif.	1310	250
KICA	Clovis, N. Mex.	1370	100
KID	Idaho Falls, Idaho	1320	500-1000
KIDO	Boise, Idaho	1350	1000-2500
KIDW	Lamar, Colo.	1420	100
KIEM	Eureka, Calif.	1450	500-1000
KIEV	Glendale, Calif	850	250
KIYN	Juneau, Alaska	1310	100
KIRO	Seattle, Wash.	650	250
KIT	Yakima, Wash.	1250	250-500
KITE	Kansas City, Mo.	1530	1000
KIUL	Garden City, Kans.	1210	100
KIUP	Pecos, Tex.	1420	100
KJBS	Durango, Colo.	1370	100
KJR	San Francisco, Calif.	1070	500
KJL	Seattle, Wash.	970	5000
KLH	Carlsbad, N. Mex.	1210	100
KLBM	La Grande, Ore. (C.P.)	1420	100-250
KLCN	Blytheville, Ark.	1290	100
KLO	Ogden, Utah	1400	500
KLPM	Minot, N. Dak.	1240	250
KLRA	Little Rock, Ark.	1390	1000-5000
KLS	Oakland, Calif.	1280	250
KLUF	Galveston, Tex.	1370	100
KLX	Oakland, Calif.	880	1000
KLZ	Denver, Colo.	560	1000-5000
KMA	Shenandoah, Iowa	930	1000-5000
KMAC	San Antonio, Tex.	1370	100-250
KMBC	Kansas City, Mo.	950	1000-5000
KMED	Medford, Ore.	1410	250
KMJ	Fresno, Calif.	580	1000
KMLB	Monroe, La.	1200	100-250
KMLJ	Clay Center, Nebr.	740	1000
KMO	Tacoma, Wash.	1330	1000
KMOX	St. Louis, Mo.	1090	50000
KMPC	Beverly Hills, Calif.	710	500
KMTR	Los Angeles, Calif.	970	1000
KNEL	Brady, Tex.	1570	250
KNOV	Palestine, Tex.	1420	100
KNOV	Austin, Tex.	1500	100
KOA	Los Angeles, Calif.	1050	50000
KOA	Denver, Colo.	830	50000
KOAC	Covallis, Ore.	550	1000
KOAM	Pittsburg, Kans.	790	1000
KOB	Albuquerque, N. Mex.	1180	10000
KOBH	Rapid City, S. Dak.	1370	100-250
KOCA	Kilgore, Tex.	1210	100-250
KOCY	Okiahoma City, Okla.	1310	100-250
KOH	Reno, Nev.	1380	500
KOIL	Omaha, Nebr.	1260	1000-5000
KOIN	Portland, Ore.	940	1000-5000
KOKO	La Junta, Colo.	1370	100
KOL	Seattle, Wash.	1270	1000-5000
KOMA	Okiahoma City, Okla.	1480	5000
KOMO	Seattle, Wash.	920	1000-5000
KONO	San Antonio, Tex.	1370	100
KOOS	Marshfield, Ore.	1200	100-250
KOES	Eugene, Ore.	1420	100
KOTN	Pipe Bluff, Ark.	1500	100
KOVC	Valley City, N. Dak.	1500	100-250
KOY	Phoenix, Ariz.	1390	1000
KPAE	Laredo, Tex. (C.P.)	1500	100-250

Call Letters	Location	Frequency Power (K.C.) (Watts)		Call Letters	Location	Frequency Power (K.C.) (Watts)	
KPAC	Port Arthur, Tex.	1260	500	KWOS	Jefferson City, Mo.	1310	100
KPBW	Poplar Bluffs, Mo. (C.P.)	1310	100	KWSC	Pullman, Wash.	1220	1000-5000
KPDN	Pampa, Tex.	1310	100	KWTN	Watertown, S. Dak.	1210	100
KPFA	Helena, Mont.	1210	100-250	KWTO	Springfield, Mo.	560	5000
KPLC	Lake Charles, La.	1500	100-250	KWYO	Sheridan, Wyo.	1370	100-250
KPLT	Paris, Tex.	1500	250	KXA	Seattle, Wash.	760	250-500
KPMC	Bakersfield, Calif.	1550	1000	KXL	Portland, Ore.	1420	100-250
KPO	San Francisco, Calif.	580	50000	KXO	El Centro, Calif.	1500	100
KPOF	Denver, Colo.	880	1000	KXOK	St. Louis, Mo. (C.P.)	1250	1000
KPPC	Pasadena, Calif.	1210	100	KXRO	Aberdeen, Wash.	1310	100-250
KPO	Wenatchee, Wash.	1500	100-250	KXYZ	Houston, Tex.	1440	1000
KPRC	Houston, Tex.	920	1000-5000	KYA	San Francisco, Calif.	1230	1000-5000
KQV	Pittsburgh, Pa.	1380	500	KYCA	Prescott, Ariz. (C.P.)	1500	100-250
KQW	San Jose, Calif.	1010	1000	KYOS	Merced, Calif.	1040	250
KRBA	Lufkin, Tex.	1310	100	KYSM	Mankato, Minn. (C.P.)	1500	100-250
KRBC	Abilene, Tex.	1420	100-250	KYW	Philadelphia, Pa.	1020	10000
KRBW	Bozeman, Mont. (C.P.)	1420	100-250	WAAB	Boston, Mass.	1410	500-1000
KRE	Berkeley, Calif.	1370	100-250	WAAF	Chicago, Ill.	920	1000
KRGV	Weslaco, Tex.	1260	1000	WAAT	Jersey City, N. J.	940	500
KRIC	Beaumont, Tex. (C.P.)	1420	100-250	WAAX	Omaha, Nebr.	660	500
KRIS	Corpus Christi, Tex.	1330	500	WABC	New York, N. Y.	860	50000
KRKD	Los Angeles, Calif.	1120	500-2500	WAB	Bangor, Me.	1200	100-250
KRKO	Everett, Wash.	1370	50000	WABY	Albany, N. Y.	1370	100-250
KRLC	Lewiston, Idaho	1390	250	WACO	Waco, Tex.	1420	100
KRLD	Dallas, Tex.	1040	10000	WADC	Tallmadge, Ohio	1320	1000-5000
KRLH	Midland, Tex.	1420	100	WAGA	Athens, Ga.	1450	500-1000
KRMC	Jamestown, N. Dak.	1370	100-250	WAGF	Dothan, Ala.	1370	250
KRMD	Shreveport, La.	1310	100-250	WAGM	Presque Isle, Me.	1420	100
KRNR	Roseburg, Ore.	1500	100-250	WAIM	Anderson, S. C.	1200	100
KRNT	Des Moines, Iowa	1320	1000-5000	WAIR	Winston-Salem, N. C.	1250	250
KROC	Rochester, Minn.	1310	100-250	WALA	Mobile, Ala.	1380	500-1000
KROD	El Paso, Tex. (C.P.)	1500	100	WALR	Zanesville, Ohio.	1210	100
KROW	Oakland, Calif.	930	1000	WAML	Laurel, Miss.	1310	100-250
KROY	Sacramento, Calif.	1210	100	WAPI	Birmingham, Ala.	1140	5000
KRQA	Santa Fe, N. Mex.	1310	100	WAPO	Chattanooga, Tenn.	1420	100-250
KRRV	Sherman, Tex.	1310	250	WARD	Brooklyn, N. Y.	1400	500
KRSC	Seattle, Wash.	1120	250	WASH	Grand Rapids, Mich.	1270	500
KSAC	Manhattan, Kans.	580	500-1000	WATL	Atlanta, Ga.	1370	100-250
KSAL	Salina, Kans.	1500	100-250	WATR	Waterbury, Conn.	1190	100
KSAM	Huntsville, Tex. (C.P.)	1500	100	WAVE	Louisville, Ky.	940	1000
KSCJ	Sioux City, Iowa	1330	1000-5000	WAWZ	Zarephath, N. J.	1350	500-1000
KSD	St. Louis, Mo.	550	1000-5000	WAYX	Waycross, Ga.	1200	100-250
KSEI	Pocatello, Idaho	900	250-1000	WAZL	Hazleton, Pa.	1420	100
KSFO	San Francisco, Calif.	560	1000-5000	WBAA	West Lafayette, Ind.	890	500-1000
KSL	Salt Lake City, Utah	1130	50000	WBAL	Baltimore, Md.	1060	10000
KSLW	Salem, Ore.	1370	100	WBAP	Fort Worth, Tex.	800	50000
KSO	Des Moines, Iowa	1430	500-2500	WBAX	Wilkes-Barre, Pa.	1210	100
KSOO	Sioux Falls, S. Dak.	1110	2500	WBBC	Brooklyn, N. Y.	1400	500
KSRO	Santa Rosa, Calif.	1310	250	WBBL	Richmond, Va.	1210	100
KSTP	St. Paul, Minn.	1460	10000-25000	WBBM	Chicago, Ill.	770	50000
KSUB	Cedar City, Utah	1310	100	WBBR	Brooklyn, N. Y.	1300	1000
KSUN	Lowell, Ariz.	1200	100-250	WBBS	Ponca City, Okla.	1200	100-250
KTAR	Phoenix, Ariz.	620	1000	WBGM	Bay City, Mich.	1410	500-1000
KTAT	Fort Worth, Tex.	1240	1000	WBEN	Buffalo, N. Y.	900	1000-5000
KTBC	Austin, Tex. (C.P.)	1120	1000	WBEO	Marquette, Mich.	1310	100
KTBS	Shreveport, La.	1450	1000	WBHP	Huntsville, Ala.	1200	100
KTEW	Temple, Tex.	1370	250	WBIG	Greensboro, N.C.	1440	1000
KTFI	Twin Falls, Idaho	1240	1000	WBIL	New York, N. Y.	1100	5000
KTHS	Hot Springs Natl. Pk. Ark.	1040	10000	WBLL	Clarksburg, W. Va.	1370	100
KTVC	Visalia, Calif.	1190	250	WBLY	Lima, Ohio	1210	100
KTWS	Santa Barbara, Cal.	1220	500	WBNO	New Orleans, La.	1200	100
KTKO	Oklahoma City, Okla.	1370	100	WBNS	Columbus, Ohio	1430	500-1000
KTRB	Modesto, Calif.	740	250	WBPN	New York, N. Y.	1350	1000
KTRH	Houston, Tex.	1290	1000-5000	WBNY	Buffalo, N. Y.	1370	100-250
KTRI	Sioux City, Iowa (C.P.)	1420	100-250	WABC	(See WABC-WB00)		
KTSA	San Antonio, Tex.	550	1000-5000	WBOW	Terre Haute, Ind.	1310	100-250
KTSM	El Paso, Tex.	1310	100-250	WBRB	Red Bank, N. J.	1210	100
KTUL	Tulsa, Okla.	1400	500-1000	WBRC	Birmingham, Ala.	930	1000-5000
KTW	Seattle, Wash.	1220	1000	WBRE	Wilkes-Barre, Pa.	1310	100
KUJ	Walla Walla, Wash.	1370	100	WBRK	Pittsfield, Mass.	1310	100-250
KUWA	Yuma, Ariz.	1420	100	WBRY	Waterbury, Conn.	1530	1000
KUOA	Siloam Springs, Ark.	1280	5000	WBT	Charlotte, N. C.	1080	50000
KUSD	Vermillion, S. Dak.	890	500	WBTV	Danville, Va.	1370	100-250
KUTA	Salt Lake City, Utah (C.P.)	1500	100	WBZ	Boston, Mass.	990	50000
KVCV	S. of Redding, Calif.	1200	100	WBZA	Boston, Mass.	990	1000
KVEC	San Luis Obispo, Calif.	1200	250	WCAD	Canton, N. Y.	1220	500
KVGB	Great Bend, Kans.	1370	100	WCAE	Pittsburgh, Pa.	1220	1000-5000
KVI	Tacoma, Wash.	570	1000-5000	WCAL	Northfield, Minn.	1250	1000-2500
KVNU	Logan, Utah (C.P.)	1200	100	WCAM	Camden, N. J.	1280	500
KVOA	Tucson, Ariz.	1260	1000	WCAN	Baltimore, Md.	600	500-1000
KVOD	Denver, Colo.	920	500	WCAP	Liberty Park, N. J.	1280	500
KVOE	Santa Ana, Calif.	1500	100	WCAT	Rapid City, S. Dak.	1200	100
KVOL	Lafayette, La.	1310	100	WCAU	Philadelphia, Pa.	1170	50000
KVOO	Tulsa, Okla.	1140	25000	WCAX	Burlington, Vt.	1200	100-250
KVOR	Colorado Springs, Colo.	1270	1000	WCZ	Carthage, Ill.	1070	100
KVOS	Bellingham, Wash.	1200	100	WCBA	Allentown, Pa.	1440	500
KVOX	Moorhead, Minn. (C.P.)	1310	100-250	WCBD	Chicago, Ill.	1080	5000
KVRS	Rock Springs, Wyo. (C.P.)	1370	100-250	WCBM	Baltimore, Md.	1370	100-250
KVSO	Ardmore, Okla.	1210	100-250	WCBS	Springfield, Ill.	1420	100-250
KWRG	Hutchinson, Kans.	1420	100	WCCL	Minneapolis, Minn.	910	50000
KWEW	Hobbs, N. Mex. (C.P.)	1500	100	WCFL	Chicago, Ill.	970	5000
KWJB	Stockton, Calif.	1200	100	WCHS	Charleston, W. Va.	580	500-1000
KWJB	Globe, Ariz. (C.P.)	1210	100-250	WCHV	Charlottesville, Va.	1420	100-250
KWJJ	Portland, Ore.	1080	500	WCKY	Covington, Ky.	1490	10000
KWK	St. Louis, Mo.	1350	1000-5000	WCLE	Cleveland, Ohio.	610	500
KWKH	Shreveport, La.	850	10000	WCLO	Janesville, Wisc.	1200	100-250
KWLC	Decorah, Iowa	1270	100	WCLS	Joliet, Ill.	1310	100
KWLK	Longview, Wash.	780	250	WCMI	Ashland, Ky.	1310	100-250
KWNO	Winona, Minn.	1200	250	WCNW	Brooklyn, N. Y.	1500	100-250
KWOC	Poplar Bluff, Mo.	1310	100				

NOTE: C. P. after station location, indicates construction permit has been issued.

Call Letters	Location	Frequency Power (K.C.) (Watts)		Call Letters	Location	Frequency Power (K.C.) (Watts)	
WCOA	Pensacola, Fla.	1340	500-1000	WHBI	Newark, N. J.	1250	1000-2500
WCOE	Meridian, Miss.	880	500-1000	WHBL	Sheboygan, Wisc	1300	250
WCOL	Columbus, Ohio	1210	100	WHBO	Memphis, Tenn.	1370	100
WCOF	Boston, Mass.	1120	500	WHBU	Anderson, Ind.	1210	100-250
WCOU	Lewistown, Me. (C.P.)	1210	100	WHBY	Green Bay, Wisc	1200	100-250
WCOV	Montgomery, Ala.(C.P.)	1210	100	WHDF	Calumet, Mich.	1370	100-250
WCPD	Cincinnati, Ohio	1200	100-250	WHDH	Boston, Mass.	830	1000
WCRW	Chicago, Ill.	1210	100	WHDL	Olean, N. Y.	1400	250
WCSC	Charleston, S. C.	1360	500-1000	WHDE	Portsmouth, N.H.	740	250
WCSE	Portland, Me.	940	1000-2500	WHEC	Rochester, N.Y.	1430	500-1000
WDAE	Tampa, Fla.	1220	1000-5000	WHEF	Kosciusko, Miss.	1500	100-250
WDAF	Kansas City, Mo.	610	1000-5000	WHFC	Cicero, Ill.	1420	100-250
WDAH	El Paso, Tex.	1310	100-250	WHIO	Dayton, Ohio	1260	1000-5000
WDAS	Philadelphia, Pa.	1370	100-250	WHIP	Hammond, Ind.	1480	5000
WDAY	Fargo, N. Dak.	940	1000-5000	WHJS	Bluefield, W. Va.	1410	500-1000
WDBJ	Roanoke, Va.	930	1000-5000	WHJB	Greensburg, Pa.	620	250
WDBO	Orlando, Fla.	580	1000-5000	WHK	Cleveland, Ohio	1390	1000-2500
WDEL	Wilmington, Del.	1120	250-500	WHKC	Columbus, Ohio	640	500
WDEV	Waterbury, Vt.	550	500	WHLB	Virginia, Minn.	1370	100-250
WDGY	Minneapolis, Minn.	1180	1000-5000	WHLS	Port Huron, Mich. (CP)	1370	250
WDNC	Durham, N.C.	1500	100	WHN	New York, N. Y.	1010	1000-5000
WDDO	Chattanooga, Tenn.	1080	1000-5000	WHO	Des Moines, Iowa	1000	5000
WDRC	Hartford, Conn.	1330	1000-5000	WHOM	Jersey City, N.J	1450	250
WDSM	Superior, Wisc. (C.P.)	1200	100	WHP	Harrisburg, Pa.	1430	500-1000
WDSU	New Orleans, La.	1250	1000	WIBA	Madison, Wisc.	1280	1000-5000
WDWS	Champaign, Ill.	1370	100-250	WIBG	Glenside, Pa.	970	100
WDZ	Tuscola, Ill.	1020	250	WIBM	Jackson, Mich.	1370	100-250
WEAF	New York, N. Y.	660	5000	WIBU	Poyntette, Wisc.	1210	100-250
WEAN	Providence, R. I	790	1000-5000	WIBW	Topeka, Kans.	580	1000-5000
WEAU	Eau Claire, Wisc.	1050	1000	WIBX	Utica, N. Y.	1200	100-250
WECB	Duluth, Minn.	1290	1000-5000	WICA	Ashtabula, Ohio	940	250
WEBO	Harrisburg, Ill.	1210	100-250	WICC	Bridgeport, Conn	600	500-1000
WEBR	Buffalo, N. Y.	1310	100-250	WIL	St. Louis, Mo.	1200	100-250
WEDC	Chicago, Ill.	1210	100	WILL	Urbana, Ill.	580	1000
WEED	Rocky Mount, N. C.	1420	100-250	WILM	Wilmington, Del.	1420	100
WEEL	Boston, Mass.	590	1000-5000	WIND	Gary, Ind.	560	1000-5000
WEEL	Reading, Pa.	830	1000	WINS	New York, N. Y.	1180	1000
WEEL	New Haven, Conn.	900	500	WIOD			
WELL	Battle Creek, Mich.	1420	100	WMFB	Miami, Fla.	610	1000
WEMP	Milwaukee, Wisc.	1310	100	WMP	Philadelphia, Pa.	1400	1000
WENR	Chicago, Ill.	870	5000	WIRE	Indianapolis, Ind.	1400	1000-5000
WENY	Elmira, N.Y. (C.P.)	1200	250	WIS	Columbia, S.C.	580	1000-5000
WEQA	Evansville, Ind.	1370	100-250	WISN	Milwaukee, Wisc.	1120	250-1000
WESG	Elmira, N. Y.	1040	1000	WJAC	Johnstown, Pa.	1310	100-250
WEST	Easton, Pa.	1200	100-250	WJAG	Norfolk, Nebr.	1060	1000
WEVD	New York, N.	1300	1000	WJAR	Providence, R. I	890	1000-5000
WEW	St. Louis, Mo.	760	1000	WJAS	Pittsburgh, Pa.	1230	1000-5000
WEXL	Royal Oak, Mich.	1310	50	WJAX	Jacksonville, Fla.	900	1000-5000
WFAA	Dallas, Tex.	800	5000	WJBC	Bloomington, Ill.	1200	100-250
WFAE	New York, N. Y.	1300	1000	WJBG	Detroit, Mich.	1500	100-250
WFAW	South Bend, Ind.	1200	100	WJBL	Decatur, Ill.	1200	100
WFAZ	White Plains, N. Y	1210	100	WJBO	Baton Rouge, La.	1120	500
WFBC	Greenville, S.C	1300	1000-5000	WJBW	New Orleans, La.	1200	100
WFBG	Altoona, Pa.	1310	100	WJBZ	Gadsden, Ala.	1210	100-250
WFBM	Syracuse, N.Y.	1360	1000-5000	WJDX	Jackson, Miss.	1270	1000-5000
WFBM	Baltimore, Md	1230	1000-5000	WJEC	Hagerstown, Md.	1210	50-100
WFBZ	Flint, Mich.	1270	500-1000	WJHL	Johnson City, Tenn.(CP)	1200	100-250
WFDF	Flint, Mich.	1310	100	WJIM	Lansing, Mich.	1200	100-250
WFEA	Manchester, N.H.	1340	500-1000	WJMD	Chicago, Ill.	1130	2000
WFIL	Philadelphia, Pa.	560	500-1000	WJMC	Rice Lake, Wisc.(C.P.)	1210	250
WFLA	Tampa, Fla.	620	1000-5000	WJNS	Ironwood, Mich.	1420	100
WFMD	Frederick, Md.	900	500	WJNO	West Palm Beach, Fla.	1200	100-250
WFMY	Youngstown, Ohio	1420	100	WJRD	Detroit, Mich.	750	5000
WFOR	Hattiesburg, Miss.	1370	100	WJSV	Tuscaloosa, Ala.	1200	100-250
WFOY	St. Augustine, Fla.	1210	100-250 ?	WJTN	Washington, D. C.	460	1000
WFTC	Kinston, N. C.	1200	100-250	WJTW	Jamestown, N. Y.	210	100-250
WGAL	Lancaster, Pa.	1500	100-250	WJW	Akron, Ohio.	1210	100-250
WGAN	Portland, Me. (C.P.)	640	500	WKAQ	New York, N. Y.	760	5000
WGAR	Cleveland, Ohio	1450	500-1000	WKAQ	San Juan, Puerto Rico	1240	1000
WGAU	Athens, Ga.	1310	100-250	WKAZ	East Lansing, Mich.	850	1000
WGBB	Freeport, N. Y.	1210	100	WKAT	Miami Beach, Fla.	1500	100
WGBF	Evansville, Ind.	630	500-1000	WKBG	East Dubuque, Ill	1500	100-250
WGBI	Scranton, Pa.	880	500-1000	WKBH	La Crosse, Wisc.	1380	1000
WGCM	Mississippi City, Miss.	1210	100-250	WKBK	Youngstown, Ohio	570	500
WGES	Chicago, Ill.	1360	500-1000	WKBQ	Harrisburg, Pa.	1200	100-250
WGH	Newport News, Va.	1310	100-250	WKBV	Richmond, Ind.	1500	100
WGL	Galesburg, Ill. (C.P.)	1500	250	WKBW	Buffalo, N.Y.	1480	5000
WGLV	Charleston, W.Va.(C.P.)	1500	100	WKBZ	Muskegon, Mich.	1500	100-250
WGL	Ft. Wayne, Ind.	1370	100	WKBU	Griffin, Ga.	1500	100
WGN	Chicago, Ill.	720	50000	WKCK	Sunbury, Pa.	1210	100
WGNV	Newburgh, N. Y	1210	100	WKRC	Cincinnati, Ohio	550	1000-5000
WGPC	Albany, Ga.	1420	100	WKST	New Castle, Pa. (C.P.)	1250	250
WGR	Buffalo, N. Y.	550	1000-5000	WKY	Oklahoma City, Okla.	900	1000-5000
WGRC	New Albany, Ind	1370	250	WKZO	Kalamazoo, Mich.	590	1000
WGRM	Grenada, Miss.	1210	100	WLAC	Nashville, Tenn.	1470	5000
WGST	Atlanta, Ga.	890	1000-5000	WLAK	Lakeland, Fla.	1310	100
WGTM	Wilson, N. C.	1310	100	WLAP	Lexington, Ky.	1420	100-250
WGVA	Indianapolis, Ind. (CP)	1050	1000	WLAW	Lawrence, Mass.	680	1000
WGY	Schenectady, N. Y.	790	50000	WLB	Minneapolis, Minn	1250	1000
WHA	Madison, Wisc.	940	5000	WLBC	Muncie, Ind.	1310	100-250
WHAJ	Greenfield, Mass.	1210	250	WLBI	Stevens Point, Wisc	900	5000
WHAL	Saginaw, Mich. (C.P.)	950	500	WLBZ	Bangor, Me.	620	500-1000
WHAM	Rochester, N. Y.	1150	50000	WLEU	Erie, Pa.	1420	100-250
WHAS	Louisville, Ky.	820	50000	WLH	Lowell, Mass.	1370	100-250
WHAT	Philadelphia, Pa.	1310	100	WLHU	Middleboro, Ky. (C.P.)	1210	100-250
WHAZ	Troy, N. Y.	1300	1000	WLNH	Laconia, N.H.	1310	100
WHB	Kansas City, Mo.	860	1000	WLS	Chicago, Ill.	870	50000
WHBB	Selma, Ala.	1500	100	WLTH	Brooklyn, N.Y.	1400	500
WHBC	Canton, Ohio	1200	100	WLVA	Lynchburg, Va.	1200	100-250
WHBF	Rock Island, Ill.	1210	100-250	WLW	Cincinnati, Ohio	700	50000

NOTE: C. P. after station location, indicates construction permit has been issued.

Call Letters	Location	Frequency (K.C.)	Power (Watts)	Call Letters	Location	Frequency (K.C.)	Power (Watts)
WMAL	Washington, D.C.	630	250-500	WSAR	Fall River, Mass.	1450	1000
WMAQ	Chicago, Ill.	670	50000	WSAU	Mausau, Wisc.	1370	100
WMAS	Springfield, Mass.	1420	100-250	WSAV	Savannah, Ga.	1310	100
WMAZ	Macon, Ga.	1180	1000	WSAY	Rochester, N.Y.	1210	100
WMBC	Detroit, Mich.	1420	100-250	WSAZ	Huntington, W.Va.	1190	1000
WVBO	Peoria, Ill.	1440	1000-5000	WSB	Atlanta, Ga.	740	50000
WMBF-WIOD	(See WIOD-WMBF)			WSEC	Chicago, Ill.	1210	100-250
WMBG	Richmond, Va.	1350	500	WSBT	South Bend, Ind.	1360	500
WMBH	Joplin, Mo.	1420	100-250	WSFA	Montgomery, Ala.	1410	500-1000
WMBI	Chicago, Ill.	1080	5000	WSGN	Birmingham, Ala.	1310	100-250
WMBO	Auburn, N.Y.	1310	100	WSJX	Nashville, Tenn.	1210	100-250
WMBR	Jacksonville, Fla.	1370	100-250	WSJW	Winston-Salem, N.C.	1310	100
WMBS	Uniontown, Pa.	1420	250	WSLI	Jackson, Miss. (C.P.)	1420	100-250
WMC	Memphis, Tenn.	780	1000-5000	WSM	Nashville, Tenn.	650	50000
WMCA	New York, N.Y.	570	100	WSMB	New Orleans, La.	1320	1000
WMEX	Boston, Mass.	1500	100-250	WSMK	Dayton, Ohio	1380	200
WMFO	Wilmington, N.C.	1370	100	WSNJ	Bridgeton, N.J.	1210	100
WMFF	Plattsburg, N.Y.	1310	100-250	WSOC	Charlotte, N.C.	1210	100-250
WMFG	Hibbing, Minn.	1210	100-250	WSPA	Spartanburg, S.C.	920	1000
WMFJ	Daytona Beach, Fla.	1420	100	WSPD	Toledo, Ohio	1340	1000-5000
WMFO	Decatur, Ala.	1370	100	WSPR	Springfield, Mass.	1140	500
WMFR	High Point, N.C.	1200	100	WSTP	Salisbury, N.C. (C.P.)	1500	100-250
WMIN	St. Paul, Minn.	1370	100-250	WSUI	Iowa City, Iowa	880	500-1000
WMMN	Fairmont, W. Va.	890	500-1000	WSUN	St. Petersburg, Fla.	620	1000-5000
WMPC	Lapeer, Mich.	1200	100-250	WSVA	Harrisonburg, Va.	550	500
WMPS	Memphis, Tenn.	1430	500-1000	WSVS	Buffalo, N.Y.	1370	50
WMSD	Sheffield, Ala.	1420	100	WSYB	Rutland, Vt.	1500	100
WMT	Cedar Rapids, Iowa	600	1000-5000	WSYR-WSUY	Syracuse, N.Y.	570	1000
WMAC	Boston, Mass.	1230	1000-5000	WTAD	Quincy, Ill.	900	1000
WNAD	Norman, Okla.	1010	1000	WTAG	Worcester, Mass.	580	1000
WNAX	Yankton, S. Dak.	570	1000-5000	WTAL	Tallahassee, Fla.	1310	100-250
WNBC	New Britain, Conn.	1380	250	WTAM	Cleveland, Ohio	1070	50000
WNBF	Binghamton, N.Y.	1500	100-250	WTAC	Green Bay, Wisc.	1330	1000
WNBH	New Bedford, Mass.	1310	100-250	WTAR	Norfolk, Va.	780	1000
WNBX	Springfield, Vt.	1260	1000	WTAX	College Station, Tex.	1120	500
WNBZ	Saranac Lake, N.Y.	1290	100	WTB	Springfield, Ill.	1210	100
WNEI	San Juan, Puerto Rico	1290	1000-2500	WTBO	Cumberland, Md.	800	250
WNEW	New York, N.Y.	1250	1000-2500	WTBN	Minneapolis, Minn.	1250	1000-5000
WNLC	New London, Conn.	1500	100	WTCL	Philadelphia, Pa.	1310	100
WNOX	Knoxville, Tenn.	1010	1000-5000	WTHI	Hartford, Conn.	1200	100
WNYC	New York, N.Y.	810	1000	WTIC	Hartford, Conn.	1060	50000
WDAI	San Antonio, Tex.	1190	50000	WTJS	Jackson, Tenn.	1310	100-250
WOC	Davenport, Iowa	1370	100-250	WTMJ	Milwaukee, Wisc.	620	1000-5000
WOCB	Barnstable Twp., Mass. (C.P.)	1210	100-250	WTMV	E. St. Louis, Ill.	1500	100-250
WOI	Ames, Iowa	640	5000	WTNJ	Trenton, N.J.	1280	500
WOKO	Albany, N.Y.	1430	500-1000	WTOC	Savannah, Ga.	1260	1000
WOL	Washington, D.C.	1310	100	WTOI	Toledo, Ohio	1200	100
WOLS	Florence, S.C.	1200	100	WTRC	Elkhart, Ind.	1310	100-250
WOMI	Owensboro, Ky.	1500	100-250	WVFW	Brooklyn, N.Y.	1400	500
WOMT	Manitowoc, Wisc.	1210	100	WVAE	Hammond, Ind.	1200	100
WOOD	Grand Rapids, Mich.	1270	500	WNJ	Detroit, Mich.	920	1000-5000
WOPI	Bristol, Tenn.	1500	100	WNLC	New Orleans, La.	850	10000
WOR	Newark, N.J.	710	50000	WNWL	Asheville, N.C.	570	1000
WORC	Worcester, Mass.	1280	500	WNWC	Woodside, N.C.	1500	100-250
WORK	York, Pa.	1320	1000	WNRL	Pittsburgh, Pa.	1500	100-250
WORL	Boston, Mass.	920	500	WNVA	Wheeling, W. Va.	1160	5000
WOSU	Columbus, Ohio	570	750-1000	WXYZ	Detroit, Mich.	1240	1000
WOV	New York, N.Y.	1130	1000				
WOW	Omaha, Nebr.	590	1000-5000				
WOWO	Ft. Wayne, Ind.	1160	10000				
WPAD	Paducah, Ky.	1420	100-250				
WPAP	Parkersburg, W. Va.	1420	100				
WPAX	Thomasville, Ga.	1210	100				
WPAY	Portsmouth, Ohio	1370	100				
WPEN	Philadelphia, Pa.	920	250-500				
WPG	Atlantic City, N.J.	1100	5000				
WPIC	Sharon, Pa. (C.P.)	780	250				
WPR	Mayaguez, Puerto Rico	1370	100-250				
WPRO	Providence, R.I.	630	500-1000				
WPRP	Ponce, Puerto Rico	1420	100-250				
WPTF	Raleigh, N.C.	680	5000				
WQAM	Miami, Fla.	560	1000				
WQAN	Scranton, Pa.	880	500-1000				
WQBC	Vicksburg, Miss.	1360	1000				
WQDM	St. Albans, Vt.	1390	1000				
WQXR	New York, N.Y.	1550	1000				
WRAK	Williamsport, Pa.	1370	100-250				
WRAL	Raleigh, N.C. (C.P.)	1210	100-250				
WRAW	Reading, Pa.	1310	100				
WRAX	Philadelphia, Pa.	920	250-500				
WRBL	Columbus, Ga.	1200	100-250				
WRD	Washington, D.C.	950	500-1000				
WRDO	Augusta, Me.	1370	100				
WRDW	Augusta, Ga.	1500	100-250				
WREC	Memphis, Tenn.	600	1000-5000				
WREN	Lawrence, Kans.	1220	1000-5000				
WRGA	Rome, Ga.	1500	100-250				
WRJN	Racine, Wisc.	1370	100-250				
WRNL	Richmond, Va.	880	500				
WROK	Rockford, Ill.	1410	500-1000				
WROL	Knoxville, Tenn.	1310	100-250				
WRR	Dallas, Tex.	1280	500				
WRTD	Richmond, Va.	1500	100				
WRUF	Gainesville, Fla.	830	5000				
WRVA	Richmond, Va.	1110	5000				
WSAI	Cincinnati, Ohio	1330	1000-5000				
WSAJ	Grove City, Pa.	1310	100				
WSAL	Salisbury, Md.	1200	250				
WSAN	Allentown, Pa.	1440	500				

NOTE: C. P. after station location, indicates construction permit has been issued.

CANADIAN BROADCAST STATIONS

CBF	Montreal, Que.	910	50000
CBT	Toronto, Ont.	840	50000
CBW	Lafayette, Que.	1050	5000
CBH	Hawthorne, Ont.	880	1000
CBR	Lulu Island, B.C.	1100	5000
CBF	Calgary, Alta.	950	1000
CFAR	Flin Flon, Man.	1370	100
CFCE	Montreal, Que.	600	500
CFCH	North Bay, Ont.	830	100
CFCN	Strathmore, Alta.	1050	10000
CFCD	Chatham, Ont.	630	100
CFCT	Equinault District, B.C.	1450	500
CFCH	Montreal, Que.	6095	75
CFCH	Charlottetown, P.E.I.	630	1000
CFCH	Grande Prairie, Alta.	1200	100
CFCH	North Kamloops, B.C.	880	1000
CFCH	Fredericton, N.B.	550	500-1000
CFCH	London, Ont.	730	100
CFCH	Prince Rupert, B.C.	580	50
CFCH	Saskatoon, Sask.	840	1000
CFCH	King, Ont.	690	10000
CFCH	Kingston, Ont.	1510	100
CFCH	Edmonton, Alta.	100	960
CFCH	King, Ont.	6070	1000
CFCH	Strathmore, Alta.	6030	100
CFCH	Moose Jaw, Sask.	1200	100-250
CFCH	Charlottetown, P.E.I.	1310	50
CFCH	Summerside, P.E.I.	1450	50
CFCH	Three Rivers, P.O.	1420	100
CFCH	Montreal, Que.	1120	100
CFCH	Sherbrooke, Que.	1210	100
CFCH	Saltfleet, Ont.	1010	100
CFCH	New Carlisle, Que.	960	1000
CFCH	Bedford, N.S.	930	1000
CFCH	Bedford, N.S.	6130	500
CFCH	Quebec, P.Q.	580	100
CFCH	St. John, N.B.	1120	100
CFCH	Chilliwack, B.C.	780	100
CFCH	Trail, B.C.	1010	1000
CFCH	Sacre-Coeur, P.O.	1030	1000
CFCH	Belmont View, Alta.	730	1000
CFCH	Sydney, N.S.	1210	100
CFCH	Calgary, Alta.	680	100
CFCH	Sydney, Ont.	1210	50
CFCH	Akivik, N.W.T.	6010	1000
CFCH	Sydney, N.S.	1390	100
CFCH	Yorkton, Sask.	1310	100
CFCH	Sault Ste. Marie, Ont.	1310	100
CFCH	Kirkland Lake, Ont.	1310	100
CFCH	Yarmouth, N.S.	1310	100
CFCH	Lethbridge, Alta.	960	100
CFCH	Sea Island, B.C.	630	500
CFCH	Middlechurch, Man.	630	1000

THE CURTAIN RISES

BROADCASTING is now an acknowledged branch of drama and the leading names of the stage and screen are attracted by its many opportunities as well as the fat salaries that go with appearance on a sponsored show. Radio drama is divided in two classes: Original and adapted plays are in one branch, and serial and sketch programs are in the second. As far as air audiences go, such names as Amos 'n' Andy and Myrt and Marge, made popular on the air, are just as much an attraction as the marquee names radio recruits from the footlights and kleiglits.



Edward G. Robinson and Claire Trevor, co-stars of the popular CBS serial "Big Town" are in the ranks of "regular" air performers, differing from most other big movie names who just appear on guest spots.



James Cagney and Noel Coward are caught by the studio candid cameraman. Circle: Irene Rich, who, in several seasons on the air, scored as favorably with listeners as she did with theatre and movie audiences.



Left to Right: Cecil B. De Mille, the movie director who added microphone triumphs to his megaphone hits as producer of the CBS "Radio Theatre" programs; Wallace Beery, an occasional guest star, and Jean Hersholt, portrayer of "Dr. Christian" in the radio series of that name.



The theatre's "royal family" is in constant air demand. Left to right: Lionel, Ethel and John Barrymore.



How a radio play takes the air is demonstrated by these four views from NBC's "Spy at Large" series. Upper left: The first script reading. Lines are ironed out and the cast learns story. Upper right: Director Joseph Bell gives some pointers to actresses Consuelo Lembke, Eileen Burns and Elena Karan. Lower left: The dress rehearsal with Miss Burns, Eric Dressler and Miss Lembke going through their paces. Lower right: On the air! Miss Lembke is shown reading the opening lines.



Two popular series of long standing are pictured above. Left: Four members of the cast of "One's Man's Family" which has been a radio hit since 1932. Photo shows Minetta Ellen (Fanny Barbour) with Bernice Berwin (Hazel) at left; Kathleen Wilson (Claudia) at right, and Winifred Wolfe (Teddy) below. Right: The popular team of Lum and Abner in make-up. Chet Lauck plays Lum and Norris Goff portrays Abner.



Amos 'n' Andy are shown with the only woman—and only third person—in their cast, Madaline Lee. The pair, Charles Correll (Amos) and Freeman Gosden (Andy) enact all the other characters themselves. Right: Myrt and Marge. (Myrtle Vail and Donna Damerel).



ON WITH THE DANCE!

WHETHER personal preferences go to "swing" or "sweet" music, dance music is a "must" on most listeners' tuning schedules. There are scores of headlining bands and space permits only some of the representative ones to be pictured on these two pages. Most dance bands attempt to establish an individual style to be distinctive and the demand for special arrangements of popular tunes keeps the arrangers working day and night. Many bands have stellar vocalists and instrumental soloists to enhance their offerings.



Fred Waring, head of the Pennsylvanians, a pioneer radio band. Choral offerings are his dish. Right: They don't usually call him the "king of jazz" any more but there's no doubt that he's still its master — Paul Whiteman.



Phil Spitalny and his All-Girl Orchestra, a radio act that's in great demand for stage appearances. Right: Raymond Paige. Below, left: Guy Lombardo (seated) and his versatile brothers, Leibert, Carmen and Victor. Below, right: B. A. Rolfe, radio old-timer who's still a radio big-timer.





Vincent Lopez, Peter Van Steeden and Robert Armbruster, three ace baton-wavers.



The Dorsey Brothers used to jointly conduct their own orchestra under that name but now they have separate aggregations—both highly successful. Jimmy Dorsey is at the left and Brother Tommy at the right.



Al Goodman, George Olsen and Joe Rines, all stellar bandsmen.



Left to Right: Horace Heidt, conductor of the Brigadiers, Gene Krupa, the drummer, who left Benny Goodman to head his own band, and Richard Himber, a consistent broadcaster.

BEAUTY AND THE MIKE

RADIO vies with the stage and screen in the beauty of its female stars. In the long run, radio even goes the other entertainment mediums one better; the microphone drafts the "best-lookers" as well as the best talent from the stage and cinema. And the high standard of mike beauty has brought about many screen offers for the broadcasting damsels. With television in the offing, you will soon enjoy hearing as well as seeing these decorative persons.



Elaine Bassett, an NBC dramatic performer. Left: Betty Lou Gerson, NBC actress and Alice Frost, heard on both CBS and NBC in leading dramatic roles.



Left to right: Olga Andre, NBC songstress frequently featured on shortwave programs because of her ability as a linguist; Virginia Verrill, vocalist presented on both networks and the Lane Sisters—Priscilla and Rosemary, whose air work brought about a Hollywood cinema career. Below, left to right: Wendy Barrie, who reversed the Lane Sisters formula by coming to the air from the screen; Maxine, vocalist with Phil Spitalny's All-Girl Orchestra, and Bess Johnson who plays a featured role in the CBS series "Hilltop House."





Dorothy Lamour, singing co-star of the NBC Chase & Sanborn Hour, whose picture on magazine covers is said to have nearly established a quantity record for radio artists, Ruth Warrick (right), CBS actress, shows the photographer her idea of keeping cool during a broadcast.



Betty Caine and Helen Walpole, NBC actresses, who are undoubtedly adept on figures of speech.



Gale Page, NBC singer and actress, who also used the mike as a short-cut to Hollywood fame. Right: Templeton Fox, NBC actress.

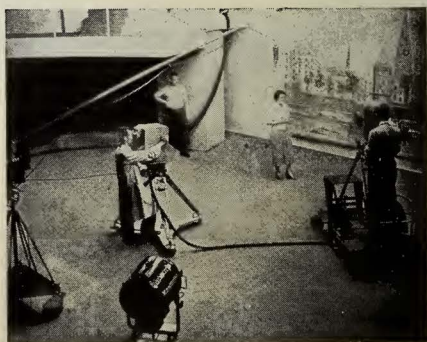


The mirror-lid of this television receiver reflects a picture measuring 12 by 14 inches off a vertically-mounted cathode-ray tube. This set was introduced to the Berlin market and is similar in many respects to models developed in American laboratories.



THERE ARE ADDED THRILLS IN SIGHT

AND sight, of course, means television. The great progress in the video art here and abroad indicates that regular television programs should be available in many parts of the country at an early date. It is certain that the new art will win wide acceptance on a mass scale and that many of the current crop of radio stars will be drafted for the television camera along with stars of the stage and screen.



No, this is not a Hollywood movie set. It is a typical European television studio. Left: This photograph reveals the excellent detail of a projection television image on a theatre-size screen ten feet high and twelve feet wide.



Preparations are under way for the introduction of public-participating television in many American cities. Gilbert Seldes and Peter C. Goldmark, respectively television program director and television engineer of the Columbia Broadcasting System, are seen at the left at the scanning panel of the network's New York video station. In the center photo they are inspecting one of ten giant transformers for the new Chrysler Building sight-and-sound station. A Columbia television studio setting of many years ago is shown at the right. The image was virtually confined to "head and shoulders" in those days. Today, however, the television camera can pick up wide-angle scenes in the manner of a movie camera.

TELEVISION BROADCAST STATIONS

LICENSEE AND LOCATION	CALL LETTERS	FREQUENCY (kc) OR GROUP*	POWER		EMISSION
			VISUAL	AURAL	
Columbia Broadcasting System, Inc., New York, N. Y.	W2XAX	B, C	50w C. P. 7500w	7500w	A4 A3
Don Lee Broadcasting System, Los Angeles Calif.	W6XAO	B, C	150w C. P. 1kw	150w	A3, A4
Farnsworth Television Incorporated of Pa., Springfield, Pa.	W3XPF	B, C	4kw	1kw	A3, A4 (C. P. only)
First National Television, Inc., Kansas City, Mo.	W9XAL	B, C	300w	150w	A3, A4
General Television Corporation, Boston, Mass.	W1XG	B, C	500w		A4
The Journal Company, Milwaukee, Wisconsin.	W9XD	B, C	500w		A4
Kansas State College of Agriculture & Applied Science, Manhattan, Kansas.	W9XAK	A	125w	125w	A3, A4 & Special
National Broadcasting Co., Inc., New York, N. Y.	W2XBS	B, C	12kw	15kw	A3, A4
National Broadcasting Co., Inc., Portable (Camden, N. J. & New York, N. Y.)	W2XBT	D (92,000 & 175000-180000)	400w	100w	A1, A2, A3, A4 & Special (C. P. only)
Philco Radio & Television Corp., Philadelphia, Pa.	W3XE	B, C	10kw	10kw	A3, A4
Philco Radio & Television Corp., Philadelphia, Pa.	W3XP	D (204000-210000)	15w		A4 & Special (C. P. only)
Purdue University, West Lafayette, Ind.	W9XC	A	1500w		A4
Radio Pictures, Inc., Long Island City, N. Y.	W2XDR	B, C	1kw	500w	A3, A4
RCA Manufacturing Co., Inc., Portable (Bldg. No. 8 of Camden Plant)	W3XAD	D (124000 to 130000)	500w	500w	A3, A4
RCA Manufacturing Co., Inc., Camden, N. J.	W3XEP	B, C	30kw	30kw	A3, A4
RCA Manufacturing Co., Inc., Portable-Mobile	W10XX	B, C	50w	50w	A3, A4
The Sparks-Withington Company, Jackson, Michigan.	W8XAN	B, C	100w	100w	A3, A4
University of Iowa, Iowa City, Iowa.	W9XK	A	100w		A4
University of Iowa, Iowa City, Iowa.	W9XUI	B, C	100w		A4
Dr. George W. Young, Minneapolis, Minnesota	W9XAT	B, C	500w		A4

*FREQUENCY GROUPS

Group A	Group B	Group C	Group D
2000 to 2100 kc	42,000 to 56,000 kc	60,000 to 86,000 kc	Any 6,000 kc frequency band above 110,000 kc excluding 400,000 to 401,000 kc.

THE SERIOUS SIDE OF RADIO MUSIC

IN this age of swing music and such dances as the Big Apple, Lambeth Walk and Yam, radio renditions are by no means confined to jitterbugs' tastes. The serious side of music is not neglected. The best symphony concerts, operas and instrumental and vocal solo bits are offered on radio schedules. Sponsors and networks spare no expense to obtain the best names in the music world.



Lily Pons, the world-famed coloratura, and her noted conductor-husband, Andre Kostelanetz.



There's beauty on the classical programs, too, as these views of Gladys Swarthout and Grace Moore adequately prove.



Arturo Toscanini, acclaimed by many experts as the greatest symphonic conductor of all time. As chief conductor of the NBC Symphony Orchestra, he has contributed greatly towards the advance of broadcast entertainment. An NBC photographer, took these candid shots of Toscanini in action.



Three popular singers of classics—Lawrence Tibbett, Margaret Speaks and Walter Cassell.



Judging by the smiles of these three stars, serious music has its bright side. Left to right: Howard Barlow, CBS conductor; Vivian Della Chiesa, NBC lyric soprano, and Erno Rapee, NBC conductor.



Mario Cozzi, NBC baritone. Left: Pierre French, conductor, who scored favorably with American listeners. Right: Frank Black, NBC conductor.



WORLD-WIDE SHORT-WAVE STATION LIST

Kc. Meters Call	Location	Kw.	Service, etc.	Kc. Meters Call	Location	Kw.	Service, etc.
400.000 0.75 W1XBG	Storrs, Conn.	0.5	Experimental	15.020 13.21 JVF	Nazaki, Japan	20.0	Phone to KWU; occ. bc.
400.500 4.95 W8XKA	Pittsburgh, Pa.	0.15	Experimental	15.505 12.35 CM43	Havana, Cuba	Tests, irr.
43.500 5.41 W8XKA	Pittsburgh, Pa.	0.1	Exp.; relays KDKA	15.500 13.27 KEM	Belina, Calif.	40.0	Phone
41.000 7.32 W2XG	New York, N. Y.	0.1	Experimental	15.475 13.29 KKL	Belina, Calif.	40.0	Phone
31.600 8.05 W1XKA	Chicopee Falls, Mass.	0.5	Experimental	15.450 13.43 IUG	Addis Ababa, Ethiopia	Phone
31.600 9.40 W3XKA	Philadelphia, Pa.	0.1	Exp.; relays KVV	15.450 13.45 XCBM	Mazatlan, Sinaloa, Mexico	Bc.; relays XEEL
31.600 9.49 W3XKA	Roshester, N. Y.	0.1	Exp.; relays WEAM	15.350 13.45 EVO	Dixie, Calif.	20.0	Phone to Hawaii, Manila
31.600 9.49 W8XKA	Pittsburgh, Pa.	Experimental	15.370 13.52 H83	Sasaboholovar, Hungary	28.0	Broadcast
31.600 9.49 W8XWJ	Detroit, Mich.	0.1	Exp.; relays WWJ	15.360 13.53 DZG	Zeesen, Germany	Phone
31.600 9.49 W8XWJ	St. Louis, Mo.	0.1	Exp.; relays KSD	15.355 13.54 KVV	Dixon, Calif.	20.0	Phone to Hawaii
31.600 11.49 OSK	Daventry, England	20.0	Broadcast	15.340 13.58 DJR	Zeesen, Germany	Broadcast
21.440 13.93 W8XK	Pittsburgh, Pa.	40.0	Bc.; relays KDKA	15.330 13.57 W2XAD	Saksachudy, N. Y.	28.0	Bc.; relays WGY
21.630 13.93 GSI	Daventry, England	15.0	Broadcast	15.320 13.58 OLREB	Podbrady, Czechoslovakia	25.0	Broadcast
21.620 13.94 W2XK	Wayne, N. J.	Bc.; relays WABC	15.210 13.60 GSP	Daventry, England	20.0	Broadcast
21.620 13.94 IZAU	Nazaki, Japan	15.200 13.65 CPT	Mafra, Bolivia	Phone
21.470 13.97 GSH	Daventry, England	20.0	15.200 13.63 DJQ	Zeesen, Germany	5-50	Broadcast
21.460 13.98 W1XAL	Boston, Mass.	5.0	Broadcast	15.200 13.68 LRU	Buenos Aires, Argentina	3.0	Bc.; relays LRI
21.460 13.99 OLRBA	Podbrady, Czechoslovakia	25.0	Broadcast	15.200 13.65 WAXE	Wayne, N. J.	15.0	Bc.; relays WABC
21.430 14.01 WEK	Lawrenceville, N. J.	20.0	Phone	15.200 13.66 GEL	Daventry, England	15.0	Broadcast
21.190 14.18 LSLA	Hurlingham, Argentina	60.0	Phone to London and Rio; day	15.200 13.67 W1XAL	Boston, Mass.	5.0	Broadcast
21.140 14.19 KB1	Manila, P. I.	10.0	Phone	15.240 13.68 TPA2	Pontoise, France	12.0	Broadcast
21.090 14.22 FSA	Marapies, Brazil	10.0	Phone; broadcast	15.230 13.70 OLRBA	Podbrady, Czechoslovakia	25.0	Broadcast
21.080 14.25 WKZ	Saverville, N. J.	10.0	Phone to England	15.220 13.71 PCJ	Habes, Holland	20.0	Experimental
21.060 14.25 KWN	Dixon, Calif.	20.0	Phone	15.210 13.72 W1XK	Pittsburgh, Pa.	40.0	Bc.; relays KDKA
21.020 14.27 L8N6	Burkham, Argentina	60.0	Phone to New York; day	15.200 13.74 D38	Zeesen, Germany	5-50	Broadcast
20.910 14.35 PSB	Marapies, Brazil	10.0	Phone	15.190 13.75 ZBW4	Hongkong, China	2.0	Broadcast
20.840 14.37 ZHY	Madrid, Spain	10.0	Phone	15.180 13.76 G60	Daventry, England	15.0	Broadcast
20.820 14.41 KSH	Bolinas, Calif.	7.0	Phone	15.170 13.85 HA	Nazaki, Japan	Broadcast
20.780 14.44 KMM	Bolinas, Calif.	40.0	Phone	15.160 13.90 OLRAC	Podbrady, Czechoslovakia	25.0	Broadcast
20.140 14.90 DWM	Nauen, Germany	Phone	15.150 13.90 YDC	Bandoeng, Java	Broadcast
19.840 14.97 OPL	Leopoldville, Belgian Congo	9.0	Phone to ORG; marraings	15.140 13.94 GEF	Daventry, England	15.0	Broadcast
19.680 14.99 DFE	Nauen, Germany	20.0	Phone to South America	15.123 13.94 RVJ	Vatican City	10.0	Broadcast
19.680 15.02 KAX	Manila, P. I.	10.0	Phone to Calif.	15.110 13.95 HA	Zeesen, Germany	5-50	Broadcast
19.620 15.14 WKN	Lawrenceville, N. J.	20.0	Phone to England	15.070 13.91 DFT	Marapies, Brazil	12.0	Phone
19.720 15.21 EAQ	Madrid, Spain	10.0	Phone to Latin America	15.055 13.95 WNC	Hindes, Florida	0.4	Phone
19.700 15.24 DPU	Nauen, Germany	Phone	15.040 13.95 RRI	Moscow, U.S.S.R.	Phone to WQG, mornings
19.660 15.24 SVU	Abschal, Egypt	8.0	Phone	15.000 23.68 WVV	Bellevue, Md.	1.0	Free, standard; Tuc. Wed.
19.460 15.31 LSF	Monte Gracia, Argentina	7.0	Phone	14.985 0.01 YSL	Son Salvador, El Salvador	Phone Mexican stations
19.520 15.37 IRP	Rome, Italy	20.0	Phone to South America	14.980 20.62 KAY	Manila, P. I.	40.0	Phone to Dixon
19.460 15.43 DWM	Nauen, Germany	Phone	14.970 20.84 LBA	Sofia, Bulgaria	Broadcast
19.340 15.51 PM	Bandoeng, Java, D. E. I.	10.0	Phone sometimes bc.	14.960 20.85 HJH	Son Salvador, El Salvador	Phone
19.320 15.58 PPU	Sepetiba, Brazil	12.0	Phone	14.935 20.89 FFE	Manapua, Brazil	Phone; broadcast
19.320 15.61 WKF	Lawrenceville, N. J.	20.0	Phone	14.910 20.12 JVG	Nazaki, Japan	10.0	Phone to Formosa; broad-
19.300 15.62 ORG	Ruyseels, Belgium	8.0	Phone	14.600 20.42 PSF	Marapies, Brazil	Phone; broadcast
19.140 15.68 LSH13	Hurlingham, Argentina	60.0	Phone to Madrid, Berlin, Paris; day	14.600 20.54 JVB	Nazaki, Japan	20.0	Phone; broadcast
19.050 15.75 JVC	Nazaki, Japan	Phone; sometimes bc.	14.590 20.56 WMN	Lawrenceville, N. J.	20.0	Phone
19.020 15.77 H83PJ	Bangkok, Siam	Broadcast	14.535 20.64 HBJ	Pragmatic, Switzerland	20.0	Phone
19.010 15.86 JVA	Nazaki, Japan	20.0	Phone to Europe; occ. bc.	14.530 20.65 LSN1	Hurlingham, Argentina	60.0	Phone to New York; morn.
18.980 15.88 ZSS	Kilohoe, S. Africa	40.0	Phone to Rugby	14.500 20.69 L8M2	Hurlingham, Argentina	60.0	Phone to Madrid, Berlin, Paris; morn., eve.
18.960 15.91 WKM	Rocky Point, N. Y.	40.0	Phone	14.480 20.72 YHA	Managua, Nicaragua	Phone to WNG
18.630 15.93 PLE	Bandoeng, Java, D. E. I.	40.0	Phone to Dixon and Nazaki	14.460 20.75 DFM	Nauen, Germany	Phone
18.620 15.98 OCI	Lima, Peru	Phone	14.460 20.78 GBW	Rugby, England	15.0	Phone
18.600 16.13 PDM	Rugby, England	40.0	Phone to WM1, WVY	14.380 21.04 VFD2	Sava, Fiji Islands	Experimental
18.545 16.18 PDM	Kootwijk, Holland	40.0	Phone	14.320 21.70 RZU	Abu Zabal, Cairo, Egypt	20.0	Phone
18.420 16.23 BBH	Pragmatic, Switzerland	20.0	Phone	14.320 21.70 SUICH	Alex, Egypt	Amateur; broadcast
18.405 16.20 POK	Kootwijk, Holland	40.0	Phone to Bandoeng	14.310 21.78 YZT	Alex, Egypt	Phone
18.240 16.34 WHI	Lawrenceville, N. J.	20.0	Phone to G4S	14.300 21.82 T2T2	Pontoise, France	12.0	Phone to U. S. A.
18.210 16.38 FZD	Saigon, French Indo-China	15.0	Phone to France	14.300 21.91 KXK	Belinas, Calif.	40.0	Phone to Japan, Java
18.270 16.42 IUE	Addis Ababa, Ethiopia	Phone	14.255 21.99 BFW	Wayne, N. J.	20.0	Broadcast
18.190 16.45 JVC	Nazaki, Japan	10.0	Phone to Java; E. I.; bc.	14.250 22.05 XHFI	Pontoise, France	Experimental; bc.
18.160 16.51 PZJ	Sepetiba, Brazil	20.0	Phone	14.215 22.62 BFG	Rugby, England	15.0	Phone
18.135 16.55 PMB	Bandoeng, Java	12.0	Phone to U. S. A.	14.200 22.72 JVI	Nazaki, Japan	10.0	Phone to Manchukuo; also bc.
18.090 16.58 TYE	Pontoise, France	40.0	Phone	14.200 22.77 YQY	Marapies, Venezuela	20.0	Phone
18.040 16.63 KQR	Belinas, Calif.	40.0	Phone	14.200 22.78	Bolinas, Calif.	Phone
18.020 16.65 KQZ	Bolinas, Calif.	40.0	Transapic phone	14.200 22.83 CG43	Manila, P. I.	40.0	Phone
17.940 16.72 WQB	Bolinas, Calif.	40.0	Phone	14.200 22.88 KBJ	S. S. Normandie	Phone
17.820 16.74 WQF	Rocky Point, N. Y.	40.0	Phone	14.190 22.91 PNSK	Cerrito, Uruguay	1.5	Phone
17.790 16.85 G8G	Daventry, England	15.0	Broadcast	14.180 22.93 CWH	Italian Ship	Phone
17.785 16.87 JZL	Nazaki, Japan	14.050 22.99	Nazaki, Japan	10.0	Phone to ships
17.760 16.87 W8XK	Pittsburgh, Pa.	40.0	Bc.; relays KDKA	14.020 23.04 JZE	Calzate, Italy	52.0	Phone
17.780 16.87 W3XAL	Bround Brook, N. J.	15.0	Broadcast; relays WJZ	14.020 23.44 JAC	Son Francisco	Time signals; 4:55-5:00 p.m.
17.760 16.87 W3XAA	Chicago, Illinois	0.5	Experimental	14.000 23.48 NFG	Rabat, Morocco	12.0	Phone to France
17.750 16.88 PHU	Huisen, Holland	Broadcast	14.000 23.53 CNE	Puerto Cabezas, Nicaragua	0.1	Phone
17.760 16.89 W2XE	Wayne, N. J.	Bc.; relays WABC	14.000 23.75 NAA	Athina, Greece	Time signals; 9:55-10:00 a.m. E. S. T.
17.760 16.89 DJE	Zeesen, Germany	5-50	Broadcast	14.230 24.41 GBU	Rugby, England	15.0	Phone
17.750 16.90 BZW	Hongkong, China	2.0	Broadcast	14.230 24.49 TYE	Pontoise, France	Phone to JVB, ships
17.740 16.90 IAC	Colombo, India	Phone; early marraings	14.225 24.62 TFJ	Reykjavik, Iceland	Broadcast
17.740 16.91 HSP	Bangkok, Siam	20.0	Phone to JVG	14.215 24.64 XHFI	Pontoise, France	Phone to U. S. A.
17.640 17.00	British Ships	Phone	14.200 24.69 GBS	Zeesen, Germany	Phone
17.620 17.12 DFB	Nauen, Germany	Phone to YVR	14.200 24.73 DZE	Kootwijk, Holland	60.0	Phone
17.490 17.16 VWX2	Kirkos, India	Phone to Rugby	14.020 24.88 PDV
17.410 17.23 W3XL	Bround Brook, N. J.	Experimental	14.000 24.95 VY8ME	Malbourne, Australia	Tests with Drummondville
17.265 17.37 DAF	Norddeich, Germany	Phone	14.000 25.00 RV58	Moscow, U.S.S.R.	20-0	Be, and phone
17.800 17.51 HASS	Szekesfeharvar, Hungary	20.0	Broadcast	14.000 25.01 IUC	Addis Ababa, Ethiopia	3.5	Phone
18.820 17.84 NAA	Arlington, Virginia	Time signals; 9:55-10:00 a.m. E. S. T.	14.000 25.01 KRQ	Bolinas, Calif.	40.0	Phone
14.665 18.00	German Ships	Phone	14.000 25.01 XHFI	Mexico, D. F., Mexico	Broadcast
14.305 18.40 PCL	Kootwijk, Holland	Phone to Bandoeng	14.000 25.01 CTG60	Pareda, Portugal	0.35	Broadcast
14.270 18.44 WLE	Lawrenceville, N. J.	20.0	Phone to Rugby	14.000 25.21 OLRA2	Podbrady, Czechoslovakia	25.0	Broadcast
14.180 18.47 KTO	Manila, P. I.	20.0	Phone to Dixon	14.000 25.22 HPS1	Aqueduct, Panama	0.05	Broadcast
14.120 18.61 IRY	Rome, Italy	40.0	Phone to KWO	14.000 25.22 XEXR	Mexico, D. F., Mexico	0.1	Broadcast
14.030 18.71 KKP	Kabuku, Hawaii	40.0	Phone	14.000 25.25 TPA3	Pontoise, France	Broadcast
14.055 18.77 KOH	Kabuku, Hawaii	40.0	Phone	14.000 25.25 W9XF	Chicago, Illinois	Bc.; relays WENR
14.050 18.81 PLG	Bandoeng, Java	Phone; afternoons	14.000 25.27 W3XK	Podbrady, Czechoslovakia	25.0	Broadcast
14.000 18.89 FTK	Ste. Assise, France	0.5	Phone to Saigon	14.000 25.29 YDB	Pittsburgh, Pa.	40.0	Bc.; relays KDKA
14.865 18.91 CEC	La Grana, Chile	Phone	14.000 25.30 GSE	Socobain, Java, D. E. I.	1.0	Broadcast
14.860 18.90 LJD	Nazaki, Japan	Phone to Shanghai	14.000 25.31 DJP	Daventry, England	20.0	Broadcast
14.810 18.97 LSV	Hurlingham, Argentina	60.0	Phone to London, Rio; morn.	Zeesen, Germany	5-50	Broadcast
13.750 19.05 JIA	Tyureki, Formosa	10.0	Phone to Nazaki
13.680 19.13 JZA	Kanjoehi, Manchukuo	20.0	Phone to Nazaki
13.590 19.16 JVE	Nazaki, Japan	10.0	Phone to PLE, P. I.; occ. bc.

Kc. Meters Call	Location	Kw.	Service, etc.	Kc. Meters Call	Location	Kw.	Service, etc.
11,840 25.34 OLRA	Poderbrady, Czechoslovakia	25.0	Broadcast	9,320 31.51 XEMF	Merida, Yucatan, Mexico	0.015	Bc.; relay XEFC
11,820 25.36 WEXA	New York, N. Y.	10.0	Bc.; relay WABC	8,420 31.51 HJABH	Armenia, Colombia	Bc.; relay HJABN
11,810 25.36 WXXA	Chicago, Illinois	0.5	Bc.; relay WCFL	8,410 31.51 GSD	Davenport, England	20.0	Broadcast
11,830 25.36 XEBR	Hermosillo, Sonora, Mexico	Bc.; relay XEBH	9,510 31.58 HJU	Buenaventura, Colombia	1.0	Broadcast
11,820 25.38 GSN	Davenport, England	20.0	Broadcast	9,510 31.58 VKME	Melbourne, Australia	5.0	Broadcast
11,820 25.40 CBNX	Toronto, Canada	0.5	Broadcast	9,504 31.57 OLRSB	Poderbrady, Czechoslovakia	25.0	Broadcast
11,810 25.40 IZRO	Rome, Italy	Broadcast	8,408 31.58 PRFS	Rio de Janeiro, Brazil	Broadcast
11,804 25.42 OAXSA	Ica, Peru	Broadcast	9,500 31.58 HJABE	Cartagena, Colombia	Broadcast
11,801 25.42 OER2	Austria, Vienna	1.5	Broadcast	9,498 31.60 XEFT	Veracruz, Ver., Mexico	02	Broadcast
11,800 25.42 JZ2	Nazaki, Japan	Broadcast	9,490 31.61 KEI	Bellman, Calif.	20.0	Phone
11,795 25.43 DJO	Zeezen, Germany	Experimental	8,400 31.61 WEF	Rocky Point, N. Y.	40.0	Phone
11,790 25.45 WJXL	Boston, Mass.	5.0	Broadcast	9,480 31.65 XEDQ	Guadalajara, Jalisco, Mexico	0.5	Bc.; relay XED
11,770 25.49 DJD	Zeezen, Germany	5-50	Broadcast	9,480 31.65 KET	Bolinas, Calif.	40.0	Phone
11,760 25.51 OLRA8	Poderbrady, Czechoslovakia	25.0	Broadcast	9,450 31.76 TGWA	Guatemala City, Guatemala	0.2	Experimental
11,750 25.53 GND	Davenport, England	20.0	Broadcast	9,441 31.78 HCZEBA	Guayaquil, Ecuador	Broadcast
11,740 25.55 HPFL	David, Panama	0.35	Broadcast	9,438 31.82 COCH	Havana, Cuba	10.0	Broadcast
11,730 25.57 PHI	Huisen, Holland	23.6	Broadcast; winter months	9,426 31.83 NAA	Arlington, Va.	Time signals; see article on time signals
11,730 25.57 CRJX	Winnipeg, Man., Canada	2.0	Bc.; relay CJRC	8,415 31.86 PLV	Bandejeng, Java, D. E. I.	20.0	Phone; sometimes bc.
11,720 25.60 TPFA	Posteize, France	12.9	Broadcast	9,360 32.06	Port de France, Martinique, F. W. I.	Broadcast
11,718 25.60 CR7BE	Leuvenne Marques, Mozambique	0.33	Broadcast	8,358 32.09 HSPJ	Bangkok, Siam	Broadcast
11,705 25.63 SM5SX	Stockholm, Sweden	Broadcast	9,336 32.16 OAXJ	Lima, Peru	Broadcast
11,680 25.68 KIO	Kahuku, Hawaii	40.0	Phone to Bellman	9,360 32.28 YNGU	Managua, Nicaragua	Broadcast
11,670 25.70 PFD	Sepetiba, Brazil	5.0	Phone	9,326 32.34 YNE	Puerto Cabezas, Nicaragua	0.1	Phone
11,660 25.73 JVL	Nazaki, Japan	10.0	Phone to Fairmont; bc.	8,325 32.37 ATJ	Siófok, Hungary	20.0	Broadcast
11,595 25.88 VRR4	Stony Hill, Jamaica	Phone to Matich, Fla.	9,046 32.17 VNY	Kierke, India	Phone to England; morning
11,548 26.00 XGR	Shanghai, China	Phone	9,040 32.19 TYA2	Pontoise, France	15.0	Phone to Algeria
11,535 26.10 VIB	Perth, Australia	1.0	Phone to Deamondville	8,960 32.48 FVA	Algiers, Algeria	Phone
11,434 26.24 COCX	Hawa, Cuba	2.0	Bc.; relay CMX	8,948 32.58 HCJB	Quito, Ecuador	0.5	Broadcast
11,430 26.25 YNE	Puerto Cabezas, Nicaragua	0.1	Phone	8,858 32.66	Brick, France	French Ships
11,385 26.35 HBO	Prangins, Switzerland	20.0	Broadcast	8,795 34.11 HKV	Bogota, Colombia	Broadcast
11,340 26.46 DAF	Norddeich, Germany	Phone	8,776 34.18 PNI	Makassar, Celebes, D. E. I.	3.0	Phone; occ. bc.
11,290 26.50 HIN	Tijuana, B. R.	Broadcast	8,710 34.40 VPD2	Manila, P. I.	Phone
11,140 26.93	German Ships	Phone	8,685 34.62 CONJG	Sava, Fiji Islands	Broadcast
11,040 27.17 HRW-	La Ceiba, Honduras	0.1	Phone	8,605 35.27 YNLQ	Managua, Nicaragua	0.5	Broadcast
11,000 27.17 CSW	Lisbon, Portugal	0.9	Broadcast	8,470 35.42	German Ships	Phone
11,000 27.27 ZLT4	Wellington, New Zealand	Broadcast	8,370 35.42 DJA	Norddeich, Germany	Phone to ships
11,000 27.27 PLP	Bandoeng, Java	3.0	Phone; occ. bc.	8,400 35.71 HCZCW	Guayaquil, Ecuador	Broadcast
10,955 27.38 HSG2	Bangkok, Siam	Phone; bc.	8,300 36.14 ZP10	Auconin, Paraguay	0.015	Broadcast
10,950 27.65 DFD	Nazari, Germany	Phone	8,280 36.19 HRW-	La Ceiba, Honduras	0.1	Phone
10,840 27.68 KWV	Dixon, Calif.	20.0	Phone to Hawaii	8,185 36.65 PSK	Manila, P. I.	Phone; bc.
10,770 27.86 GCP	Rugby, England	15.0	Phone	8,120 36.95 KAZ	Rabat, Morocco	12.0	Phone; bc.
10,740 27.93 JPM	Nazaki, Japan	20.0	Phone to U. S. A.; occ. bc.	8,025 37.24 CNR	Antofagasta, Chile	0.4	Phone
10,670 28.12 CVC	La Grania, Chile	0.5	Phone	7,991 37.68 LSLJ	Hurlingham, Argentina	5.0	Phone to Rio; night
10,660 28.14 JPN	Nazaki, Japan	20.0	Bc.; relay JOAK	7,980 37.68 JYR	Kemikawa-Cho, Japan	Broadcast
10,620 28.25 WEF	Rocky Point, N. Y.	40.0	Phone to Europe	7,969 38.12 SYX	Abu Zabal, Egypt	20.0	Phone
10,610 28.28 WEA	Rocky Point, N. Y.	40.0	Experimental	7,954 38.24 HCDJ8B	Guayaquil, Ecuador	0.5	Broadcast
10,578 28.38 FJB	Paris, France	Ther. signals; 7:55-8 p. m., E. S. T.	7,950 38.31 PCA	Kootwijk, Holland	60.0	Phone
10,535 28.48 JIB	Tyureki, Formosa	6.0	Phone to Japan	7,940 38.41 PNR	Puerto Cabezas, Nicaragua	Broadcast
10,430 28.76 YTE3	Pontoise, France	12.0	Phone to U. S. A.	7,937 38.47 HBF	Prangins, Switzerland	20.0	Broadcast
10,430 28.76 YTE3	Mudan, Szechuan, D. E. I.	3.0	Phone; occ. bc.	7,940 38.76 CEO	LaOraja, Chile	0.5	Phone
10,420 28.79 XCV	Shanghai, China	Phone	7,920 39.03 IUB	Adia Ababa, Ethiopia	Phone
10,418 28.82 KES	Bolinas, Calif.	40.0	Phone	7,920 39.06 PLP	Managua, Nicaragua	Broadcast
10,410 28.82 LSY	Monte Grande, Argentina	10.0	Phone	7,950 39.74 TSW5	Puntarenas, Costa Rica	0.12	Broadcast
10,410 28.82 PDK	Kootwijk, Holland	60.0	Phone	7,900 39.87 KKH	Kahuku, Hawaii	40.0	Phone
10,400 28.85 KIZ2	Dixon, Calif.	20.0	Phone	7,900 39.85 JVP	Nazaki, Japan	20.0	Bc.; phone
10,375 28.92 JVO	Nazaki, Japan	Phone to Manchukuo; bc.	7,870 40.16 JVP	Nazaki, Japan	10.0	Phone to Java
10,370 28.93 EAJ43	Tenerife, Canary Islands	Broadcast	7,845 40.45 WEG	Rocky Point, N. Y.	40.0	Phone
10,350 28.98 LAJ33	Caramansa, Spain	Broadcast	7,820 40.71 KEG	Kahuku, Hawaii	40.0	Phone
10,350 28.98 LAX	Monte Grande, Argentina	12.0	Phone; also bc.	7,800 40.85 XLCR	Mexico, D. F., Mexico	20.0	Broadcast
10,335 29.03 ZFD	St. George, Bermuda	1.5	Phone; mostly telegraph	7,816 41.01 YMLK	Granada, Nicaragua	Broadcast
10,348 29.03 ORK	Ruyssels, Belgium	11.0	Broadcast	7,804 41.20 HED50	Melbourne, Australia	Experimental
10,310 29.10 PFM	Sepetiba, Brazil	20.0	Phone	7,794 41.39 BNSD	Stockholm, Sweden	6.03	Broadcast
10,310 29.13 LSL	Hurlingham, Argentina	20.0	Phone to London, Rio; night	7,759 41.67 TYAM	Managua, Nicaragua	Bc.; amateur
10,290 29.16 DZM	Zeezen, Germany	Phone	7,740 41.84 EAJ4	Santa Cruz, Tamarit, C. I.	Broadcast
10,260 29.24 PMN	Bandoeng, Java, D. E. I.	3.0	Phone; occ. bc.	7,720 42.07	San Sebastian, Spain	Phone
10,260 29.27 LK33	Hurlingham, Argentina	20.0	Phone to Madrid, Berlin, Paris; night	7,717 42.80 CERAA	Lebita, Angola	0.5	Bc.; R. W., phone
10,230 29.33 CSD	Antofagasta, Chile	0.4	Phone; bc.	7,695 43.67	Port W. Africa	Broadcast
10,230 29.35 FEF	Marapica, Brazil	Phone	7,608 43.25 FOSAA	Valencia, Spain	Broadcast
10,170 29.48 RFO	Baku, U. S. S. R.	15.0	Phone to ORK	7,602 43.26 PIJ	Powert, Belize	0.1	Broadcast
10,140 29.59 OFM	Leopoldville, Belgian Congo	10.0	Phone to HQ, RNE	7,596 43.26 EAP	Dordrecht, Holland	Amateur; sometimes bc.
10,070 29.79 EDN	Madrid, Spain	10.0	Phone to HQ	7,596 43.26 EAP	Barcelona, Spain	Broadcast
10,065 29.81 TDE	Kanfochi, Manchukuo	1.5	Phone	7,590 43.26 EAP	Tetuan, Sp. Morocco	Broadcast
10,055 29.84 ZPB	St. George, Bermuda	1.5	Phone	7,590 43.26 EAP	Asmarat, Dutch Guinea	Broadcast
10,055 29.84 SUV	Abu Zabal, Egypt	20.0	Phone to Germany, England	7,590 43.26 EAP	Quito, Ecuador	0.08	Broadcast
10,042 29.87 DZB	Zeezen, Germany	Phone	7,590 43.26 EAP	Port Hedland, Australia	Broadcast
10,000 30.00 WWV	Beltville, Md.	Standard frequency	7,590 43.26 EAP	Chedid, Trujillo	0.1	Broadcast
0.990 30.03 KAZ	Manila, P. I.	40.0	Phone	7,590 43.26 EAP	Bolinas, Calif.	40.0	Phone
0.940 30.18 CSW	Lisbon, Portugal	Broadcast	7,590 43.26 EAP	Nankin, China	Broadcast
0.900 30.32 LNS2	Hurlingham, Argentina	60.0	Phone to New York; night	7,590 43.26 EAP	Trujillo, D. R.	0.025	Broadcast
0.860 30.43 EAJ	Madrid, Spain	20.0	Broadcast	7,590 43.26 EAP	Sas Pedro de Macoris, D. R.	0.15	Broadcast
0.840 30.49 JOC	Kemikawa-Cho, Japan	10.0	Bc.; tests	7,590 43.26 EAP	Nazari, Japan	20.0	Phone to U. S. A.; bc.
0.840 30.80 COCX	Havana, Cuba	Bc.; relay CMQ	7,590 43.26 EAP	Manila, P. I.	40.0	Phone
0.875 31.01 DZA	Zeezen, Germany	Phone	7,590 43.26 EAP	Bolinas, Calif.	40.0	Phone
0.875 31.02 HANR8	Lisbon, Portugal	Broadcast	7,590 43.26 EAP	San Jose, Costa Rica	Broadcast
0.865 31.04 CTRIA	Marapica, Brazil	Phone	7,590 43.26 EAP	Managua, Venezuela	0.15	Broadcast
0.860 31.06 PSJ	Buenos Aires, Argentina	5.0	Bc.; relay LRI	7,590 43.26 EAP	Trujillo, D. R.	0.2	Broadcast
0.845 31.10 HBSW	Port-au-Prince, Haiti	9.03	Broadcast	7,590 43.26 EAP	Riohama, Ecuador	Bc.; Thursdays
0.835 31.14 IZRO3	Rome, Italy	20.0	Broadcast	7,590 43.26 EAP	Amato, Ecuador	Broadcast
0.818 31.18 HJABP	Cartagena, Colombia	0.7	Broadcast	7,590 43.26 EAP	Trujillo, D. R.	Broadcast
0.810 31.22 YDQ	Soerabaya, Java, D. E. I.	1.0	Bc.; relay YDA	7,590 43.26 EAP	San Jose, Costa Rica	Broadcast
0.810 31.23 HPSJ	Manama, Bahrain	0.16	Broadcast	7,590 43.26 EAP	Tetuan, Morocco	0.2	Broadcast
0.810 31.25 CQN	Macao, Port China	Broadcast	7,590 43.26 EAP	Chedid Bolivar, Venezuela	0.25	Broadcast
0.800 31.25 CB960	Santiago, Chile	0.1	Broadcast	7,590 43.26 EAP	Managua, Nicaragua	0.1	Broadcast
0.800 31.25 RAN	Moscow, U. S. S. R.	Broadcast	7,590 43.26 EAP	Valencia, Venezuela	0.3	Broadcast
0.797 31.28 VKGME	Perth, Australia	Experimental	7,590 43.26 EAP	La Ceiba, Honduras	0.1	Phone
0.795 31.27 HBL	Prangins, Switzerland	Broadcast	7,590 43.26 EAP	Trujillo, D. R.	0.05	Broadcast
0.790 31.28 PCJ	Huisen, Holland	20.0	Exp.; broadcast	7,590 43.26 EAP	Cristo de Aranza, Venezuela	Broadcast
0.790 31.28 W3XUA	Philadelphia, Pa.	19.0	Bc.; relay WOU	7,590 43.26 EAP	Trujillo, D. R.	0.025	Broadcast
0.790 31.28 VKXME	Sydney, Australia	20.0	Broadcast	7,590 43.26 EAP	Lima, Peru	Broadcast
0.790 31.31 VKJLR	Lynchburg, Va., Australia	20.0	Broadcast	7,590 43.26 EAP	Brook Brook, N. J.	100.0	Experimental
0.790 31.31 GSC	Davenport, England	20.0	Broadcast	7,590 43.26 EAP	Santiago, D. R.	0.02	Broadcast
0.785 31.34 HJABC	Cueita, Colombia	0.25	Broadcast	7,590 43.26 EAP	San Jose, Costa Rica	1.0	Broadcast
0.780 31.35 WIKX	Millia, Mass.	10.0	Bc.; relay WBZ, WBZA	7,590 43.26 EAP	Aracua, Venezuela	0.25	Broadcast
0.765 31.36 HBL	Manila, P. I.	40.0	Broadcast	7,590 43.26 EAP	Caracas, Venezuela	0.1	Broadcast
0.765 31.36 VUB	Bombay, India	4.5	Bc.; relay	7,590 43.26 EAP	La Ceiba, Honduras	0.1	Phone
0.760 31.38 DJA	Zeezen, Germany	5-50	Broadcast	7,590 43.26 EAP	Trujillo, D. R.	0.05	Broadcast
0.760 31.38 HJABP	Barranquilla, Colombia	1.0	Broadcast	7,590 43.26 EAP	Cristo de Aranza, Venezuela	Broadcast
0.760 31.41 HREY	Port-au-Prince, Haiti	9.03	Broadcast	7,590 43.26 EAP	Trujillo, D. R.	0.025	Broadcast
0.750 31.41 OLRSB	Poderbrady, Czechoslovakia	25.0	Broadcast	7,590 43.26 EAP	Lima, Peru	Broadcast
0.740 31.47 LKJ1	Jeloy, Norway	1.0	Broadcast	7,590 43.26 EAP	Brook Brook, N. J.	100.0	Experimental
0.740 31.47 DFN	Zeezen, Germany	5-50	Broadcast	7,590 43.26 EAP	Santiago, D. R.	0.02	Broadcast
0.735 31.46 JZ2	Nazaki, Japan	40.0	Broadcast	7,590 43.26 EAP	San Jose, Costa Rica	1.0	Broadcast
0.730 31.48 W2XAF	Schenectady, N. Y.	Bc.; relay WGY	7,590 43.26 EAP	Aracua, Venezuela	0.25	Broadcast
0.725 31.49 2BW3	Hong-Kong, China	2.0	Bc.; relay ZBW	7,590 43.26 EAP	Caracas, Venezuela	0.1	Broadcast

Kc. Meters Call	Location	Kw.	Service, etc.	Kc. Meters Call	Location	Kw.	Service, etc.
6.350 47.24 YNJS	Waspook, Nicaragua	0.1	Phone	6.025 48.79 HJABJ	Santa Marta, Colombia	0.025	Broadcast
6.350 47.24 YNJS	Wapam, Nicaragua	0.1	Phone	6.020 49.83 DJC	Zeesen, Germany	5-50	Broadcast
6.357 47.20 HRP1	San Pedro Sula, Honduras	0.075	Broadcast	6.020 49.83 XEUW	Veracruz, Ver., Mexico	0.25	Broadcast
6.340 47.32 YNE	Puerto Cabezas, Nicaragua	0.1	Phone	6.015 49.88 XEWI	Mexico, D. F., Mexico	0.50	Broadcast
6.340 47.32 HIX	Trujillo, D. R.	Broadcast	6.012 49.90 HJ3ABH	Bogota, Colombia	1.2	Broadcast
6.310 47.29 JZG	Nassau, Japan	10.0	Phone to ships	6.010 49.92 VP3MR	Georgetown, British Guiana	0.25	Amateur; bo.
6.310 47.54 HIZ	Trujillo, D. R.	0.02	Broadcast	6.010 49.92 COX	Havana, Cuba	0.1	Broadcast
6.300 47.62 YV4RD	Maracay, Venezuela	0.1	Broadcast	6.010 49.92 OL2RA	Podebrady, Czechoslovakia	25.0	Broadcast
6.280 47.77 HIG	Trujillo, D. R.	0.05	Broadcast	6.005 49.96 CFCX	Montreal, Quebec	0.075	Be., relays CFCF
6.280 47.77 COHB	Sancti Spiritus, Cuba	0.15	Broadcast	6.005 49.96 VEDND	Montreal, Quebec	4.0	Broadcast
6.270 47.54 YV5RP	Caracas, Venezuela	Broadcast	6.000 49.90 HJABC	Quibdo, Colombia	1.0	Be.; relays XEB
6.260 47.92 OAXAG	Lima, Peru	Broadcast	6.000 50.00 YOI	Bucharest, Roumania	0.3	Broadcast
6.250 48.00 YV5RJ	Caracas, Venezuela	Broadcast	6.000 50.00 RV59	Moscow, U.S.S.R.	20.0	Broadcast
6.243 48.05 HIN	Trujillo, D. R.	0.75	Broadcast	6.000 50.00 TCQWA	Guatemala City, Guatemala	0.2	Broadcast
6.235 48.11 HRD	La Ceiba, Honduras	0.25	Broadcast	6.000 50.00 PQCS	Tannanar, Madagascar	Broadcast
6.225 48.19 YV1RG	Valera, Venezuela	0.2	Broadcast	5.980 50.17 HIX	Trujillo, D. R.	1.0	Broadcast
6.205 48.35 YV1RI	Coro, Venezuela	0.2	Broadcast	5.965 50.28 HVJ	Vatican City	10.0	Broadcast
6.200 48.39 XEXS	Mexico, D. F., Mexico	0.1	Broadcast	5.955 50.28 HPT	Bogota, Colombia	Broadcast
6.200 48.39 COKG	Sancti, Cuba	2.4	Be.; relays CMKB	5.955 50.04 RPT	Tashkent, U.S.S.R.	Phone
6.198 48.08 HIRQ	Ciudad, Trujillo	0.025	Broadcast	5.950 50.08 HJ2ABD	Bucaramanga, Colombia	0.1	Broadcast
6.190 48.47 HJIA	Santiago de los Caballeros	Broadcast	5.950 50.08 HPSK	Colon, Panama	Broadcast
6.164 48.67 OAXIB	Chetayu, Peru	0.05	Broadcast	5.940 50.00 TGXZ	Guatemala City, Guatemala	0.2	Police; be.
6.150 48.70 CJO	Winnipeg, Man., Canada	0.3	Be.; relays OAK1A	5.925 50.04 HJ2S	Port-au-Prince, Haiti	0.1	Be.; relays HHZT
6.150 48.76 FTAAJ	Tunis, Tunisia	Experimental	5.917 50.71 YV4RH	Valencia, Venezuela	Broadcast
6.156 48.73 YV5RD	Caracas, Venezuela	1.0	Broadcast	5.917 50.71 YV5VR	Maracay, Venezuela	Broadcast
6.150 48.78 CB615	Santiago, Chile	0.15	Broadcast	5.899 50.84 YV3HA	Barquisimeto, Venezuela	0.25	Broadcast
6.150 48.79 HJ5N	Santiago de los Caballeros	Broadcast	5.885 51.00 ZEA	Salsburg, So. Rhodesia	0.325	Broadcast
6.150 48.78 HJABU	Pereira, Colombia	0.1	Broadcast	5.885 51.02 IUA	Adia Ababa, Ethiopia	Broadcast
6.150 48.78 VEOCL	Winnipeg, Man., Canada	Broadcast	5.875 51.06 HRN	Tegucigalpa, Honduras	0.4	Broadcast
6.148 48.80 ZEB	Bulawayo, So. Rhodesia	0.325	Broadcast	5.865 51.15 HJ1J	San Pedro de Macoris, D. R.	0.04	Broadcast
6.140 48.86 WSK	Pittsburgh, Pa.	40.0	Be.; relays KDKA	5.850 51.28 YV1RB	Maracaibo, Venezuela	0.3	Broadcast
6.137 48.58 CR7AA	Lourenco Marques, Mozambique	0.33	Broadcast	5.845 51.32 KRAI	Kanarai, Hawaii	40.0	Phone
6.137 48.58 CR7AA	Mexico, D. F., Mexico	Broadcast	5.830 51.46 TDD	Shinkio, Manchukuo	Phone to Tokyo
6.137 48.58 CR7AA	Parade, Portugal	0.35	Broadcast	5.830 51.46 CWD	Montevideo, Uruguay	Phone
6.137 48.58 CR7AA	Havana, Cuba	0.2	Be.; relays CMCD	5.830 51.46 TIGPH	San Jose, Costa Rica	1.5	Phone
6.137 48.58 CR7AA	Jeloy, Norway	1.0	Broadcast	5.830 51.46 TIXZ	San Jose, Costa Rica	1.0	Broadcast
6.137 48.58 CR7AA	Georgetown, British Guiana	0.15	Broadcast	5.800 51.72 YV5RC	Caracas, Venezuela	1.0	Broadcast
6.137 48.58 CR7AA	Cuzco, Peru	Broadcast	5.800 51.72 KZGF	Manila, P. I.	Phone; occ. bo.
6.137 48.58 CR7AA	Montevideo, Uruguay	1.0	Broadcast	5.790 51.81 JYU	Nazaki, Japan	10.0	Phone to Manetuko;
6.137 48.58 CR7AA	Bogota, Colombia	Broadcast	5.780 51.90 OAX4D	Lima, Peru	20.0	also be.
6.137 48.58 CR7AA	Huancayo, Peru	Broadcast	5.780 51.90 HJ4ABD	Medellin, Colombia	Broadcast
6.137 48.58 CR7AA	Arequipa, Peru	Broadcast	5.780 51.90 HJ4ABD	Managua, Nicaragua	Broadcast
6.137 48.58 CR7AA	Bandoeng, Java, D. E. I.	1.5	Broadcast	5.780 51.90 HJ4ABD	Quito, Ecuador	Broadcast
6.137 48.58 CR7AA	Mexico, D. F., Mexico	Broadcast	5.780 51.90 HJ4ABD	Nazaki, Japan	10.0	Phone to Formosa; be.
6.137 48.58 CR7AA	Veracruz, Veracruz, Mexico	0.2	Broadcast	5.780 51.90 HJ4ABD	Guatemala City, Guatemala	0.2	Broadcast
6.137 48.58 CR7AA	Panama City, Panama	0.2	Broadcast	5.780 51.90 HJ4ABD	San Cristobal, Venezuela	0.75	Broadcast
6.137 48.58 CR7AA	Wayne, N. J.	10.0	Be.; relays WABC	5.780 51.90 HJ4ABD	Rosland, B. C., Canada	Phone; be.
6.137 48.58 CR7AA	Mexico, D. F.	Broadcast	5.780 51.90 HJ4ABD	Norddeich, Germany	Phone; be.
6.137 48.58 CR7AA	Guadalupe, Mexico	Broadcast	5.780 51.90 HJ4ABD	Puerto Cabezas, Nicaragua	0.1	Phone
6.137 48.58 CR7AA	Barranquilla, Colombia	1.0	Broadcast	5.780 51.90 HJ4ABD	San Ramon, Costa Rica	0.2	Broadcast
6.137 48.58 CR7AA	Podebrady, Czechoslovakia	25.0	Broadcast	5.780 51.90 HJ4ABD	Sverdlovsk, U.S.S.R.	15.0	Phone
6.137 48.58 CR7AA	Davenport, England	20.0	Broadcast	5.780 51.90 HJ4ABD	Monte Grande, Argentina	Phone
6.137 48.58 CR7AA	Calcutta, India	0.5	Broadcast	5.780 51.90 HJ4ABD	Bandoeng, Java, D. E. I.	0.45	Phone; be.
6.137 48.58 CR7AA	Calcutta, India	0.5	Broadcast	5.780 51.90 HJ4ABD	La Ceiba, Honduras	0.1	Phone
6.137 48.58 CR7AA	Manizales, Colombia	Broadcast	5.780 51.90 HJ4ABD	Bandoeng, Java, D. E. I.	0.6	Broadcast
6.137 48.58 CR7AA	Bound Brook, N. J.	20.0	Be.; relays WJZ	5.780 51.90 HJ4ABD	Bojinas, Calif.	40.0	Phone
6.137 48.58 CR7AA	Chicago, Illinois	5.0	Be.; relays WENR	5.780 51.90 HJ4ABD	Bojinas, Calif.	40.0	Phone
6.137 48.58 CR7AA	Belgrade, Yugoslavia	2.5	Broadcast	5.780 51.90 HJ4ABD	Hampilton, Bermuda	1.5	Phone
6.137 48.58 CR7AA	Johannesburg, S. Africa	5.0	Broadcast	5.780 51.90 HJ4ABD	Beltville, Md	1.0	Frequency Standard; Tue.
6.137 48.58 CR7AA	Medellin, Colombia	0.1	Broadcast	5.780 51.90 HJ4ABD	La Ceiba, Honduras	0.1	Phone
6.137 48.58 CR7AA	Hong-Kong, China	2.0	Be.; relays ZBW	5.780 51.90 HJ4ABD	Bandoeng, Java, D. E. I.	0.6	Broadcast
6.137 48.58 CR7AA	Ibague, Colombia	0.5	Broadcast	5.780 51.90 HJ4ABD	Bojinas, Calif.	40.0	Phone
6.137 48.58 CR7AA	Toronto, Ont., Canada	0.5	Broadcast	5.780 51.90 HJ4ABD	Bojinas, Calif.	40.0	Phone
6.137 48.58 CR7AA	Nairobi, Kenya, Africa	1.25	Broadcast	5.780 51.90 HJ4ABD	Hampilton, Bermuda	1.5	Phone
6.137 48.58 CR7AA	Penang, Straits Settlements	0.05	Broadcast	5.780 51.90 HJ4ABD	Beltville, Md	1.0	Frequency Standard; Tue.
6.137 48.58 CR7AA	La Paz, Bolivia	Broadcast	5.780 51.90 HJ4ABD	La Ceiba, Honduras	0.1	Phone
6.137 48.58 CR7AA	Chicago, Illinois	20.0	Be.; relays WCFL	5.780 51.90 HJ4ABD	Bandoeng, Java, D. E. I.	0.6	Broadcast
6.137 48.58 CR7AA	Zeesen, Germany	5-50	Experimental	5.780 51.90 HJ4ABD	Bojinas, Calif.	40.0	Phone
6.137 48.58 CR7AA	Colon, Panama	0.2	Broadcast	5.780 51.90 HJ4ABD	Bojinas, Calif.	40.0	Phone
6.137 48.58 CR7AA	Maracaibo, Venezuela	Broadcast	5.780 51.90 HJ4ABD	Hampilton, Bermuda	1.5	Phone
6.137 48.58 CR7AA	Macao, Asia	0.5	Broadcast	5.780 51.90 HJ4ABD	Beltville, Md	1.0	Frequency Standard; Tue.
6.137 48.58 CR7AA	Vancouver, B. C., Canada	0.01	Broadcast	5.780 51.90 HJ4ABD	La Ceiba, Honduras	0.1	Phone
6.137 48.58 CR7AA	Toronto, Ontario	1.0	Broadcast	5.780 51.90 HJ4ABD	Bandoeng, Java, D. E. I.	0.6	Broadcast
6.137 48.58 CR7AA	Bogota, Colombia	0.1	Broadcast	5.780 51.90 HJ4ABD	Bojinas, Calif.	40.0	Phone
6.137 48.58 CR7AA	Colombo, Ceylon	Broadcast	5.780 51.90 HJ4ABD	Bojinas, Calif.	40.0	Phone
6.137 48.58 CR7AA	Mexico, D. F., Mexico	Broadcast	5.780 51.90 HJ4ABD	Hampilton, Bermuda	1.5	Phone
6.137 48.58 CR7AA	Skamlebaek, Denmark	0.5	Broadcast	5.780 51.90 HJ4ABD	Beltville, Md	1.0	Frequency Standard; Tue.
6.137 48.58 CR7AA	Cincinnati, Ohio	10.0	Be.; relays WLW	5.780 51.90 HJ4ABD	La Ceiba, Honduras	0.1	Phone
6.137 48.58 CR7AA	Philadelphia, Pa.	10.0	Be.; relays WCAU	5.780 51.90 HJ4ABD	Bandoeng, Java, D. E. I.	0.6	Broadcast
6.137 48.58 CR7AA	Bogota, Colombia	1.0	Broadcast	5.780 51.90 HJ4ABD	Bojinas, Calif.	40.0	Phone
6.137 48.58 CR7AA	Mexico, D. F., Mexico	Broadcast	5.780 51.90 HJ4ABD	Bojinas, Calif.	40.0	Phone
6.137 48.58 CR7AA	Mexico, D. F., Mexico	Broadcast	5.780 51.90 HJ4ABD	Hampilton, Bermuda	1.5	Phone
6.137 48.58 CR7AA	Barranquilla, Colombia	0.15	Broadcast	5.780 51.90 HJ4ABD	Beltville, Md	1.0	Frequency Standard; Tue.
6.137 48.58 CR7AA	Miami Beach, Fla.	2.5	Be.; relays WIOD	5.780 51.90 HJ4ABD	La Ceiba, Honduras	0.1	Phone
6.137 48.58 CR7AA	Santiago de los Caballeros, D. R.	0.1	Broadcast	5.780 51.90 HJ4ABD	Bandoeng, Java, D. E. I.	0.6	Broadcast
6.137 48.58 CR7AA	Boston, Mass.	5.0	Broadcast	5.780 51.90 HJ4ABD	Bojinas, Calif.	40.0	Phone
6.137 48.58 CR7AA	Tandjopriok, Java, D. E. I.	10.0	Broadcast	5.780 51.90 HJ4ABD	Bojinas, Calif.	40.0	Phone
6.137 48.58 CR7AA	Medellin, Colombia	Broadcast	5.780 51.90 HJ4ABD	Hampilton, Bermuda	1.5	Phone
6.137 48.58 CR7AA	Podebrady, Czechoslovakia	25.0	Broadcast	5.780 51.90 HJ4ABD	Beltville, Md	1.0	Frequency Standard; Tue.
6.137 48.58 CR7AA	Panama, Panama	0.1	Broadcast	5.780 51.90 HJ4ABD	La Ceiba, Honduras	0.1	Phone
6.137 48.58 CR7AA	Calgary, Alberta, Canada	0.1	Be.; relays CFCN	5.780 51.90 HJ4ABD	Bandoeng, Java, D. E. I.	0.6	Broadcast
6.137 48.58 CR7AA	Masalia, Mexico	Broadcast	5.780 51.90 HJ4ABD	Bojinas, Calif.	40.0	Phone
6.137 48.58 CR7AA				5.780 51.90 HJ4ABD	Bojinas, Calif.	40.0	Phone
6.137 48.58 CR7AA				5.780 51.90 HJ4ABD	Hampilton, Bermuda	1.5	Phone
6.137 48.58 CR7AA				5.780 51.90 HJ4ABD	Beltville, Md	1.0	Frequency Standard; Tue.
6.137 48.58 CR7AA				5.780 51.90 HJ4ABD	La Ceiba, Honduras	0.1	Phone
6.137 48.58 CR7AA				5.780 51.90 HJ4ABD	Bandoeng, Java, D. E. I.	0.6	Broadcast
6.137 48.58 CR7AA				5.780 51.90 HJ4ABD	Bojinas, Calif.	40.0	Phone
6.137 48.58 CR7AA				5.780 51.90 HJ4ABD	Bojinas, Calif.	40.0	Phone
6.137 48.58 CR7AA				5.780 51.90 HJ4ABD	Hampilton, Bermuda	1.5	Phone
6.137 48.58 CR7AA				5.780 51.90 HJ4ABD	Beltville, Md	1.0	Frequency Standard; Tue.
6.137 48.58 CR7AA				5.780 51.90 HJ4ABD	La Ceiba, Honduras	0.1	Phone
6.137 48.58 CR7AA				5.780 51.90 HJ4ABD	Bandoeng, Java, D. E. I.	0.6	Broadcast
6.137 48.58 CR7AA				5.780 51.90 HJ4ABD	Bojinas, Calif.	40.0	Phone
6.137 48.58 CR7AA				5.780 51.90 HJ4ABD	Bojinas, Calif.	40.0	Phone
6.137 48.58 CR7AA				5.780 51.90 HJ4ABD	Hampilton, Bermuda	1.5	Phone
6.137 48.58 CR7AA				5.780 51.90 HJ4ABD	Beltville, Md	1.0	Frequency Standard; Tue.
6.137 48.58 CR7AA				5.780 51.90 HJ4ABD	La Ceiba, Honduras	0.1	Phone
6.137 48.58 CR7AA				5.780 51.90 HJ4ABD	Bandoeng, Java, D. E. I.	0.6	Broadcast
6.137 48.58 CR7AA				5.780 51.90 HJ4ABD	Bojinas, Calif.	40.0	Phone
6.137 48.58 CR7AA				5.780 51.90 HJ4ABD	Bojinas, Calif.	40.0	Phone
6.137 48.58 CR7AA				5.780 51.90 HJ4ABD	Hampilton, Bermuda	1.5	Phone
6.137 48.58 CR7AA				5.780 51.90 HJ4ABD	Beltville, Md	1.0	Frequency Standard; Tue.
6.137 48.58 CR7AA				5.780 51.90 HJ4ABD	La Ceiba, Honduras	0.1	Phone
6.137 48.58 CR7AA				5.780 51.90 HJ4ABD	Bandoeng, Java, D. E. I.	0.6	Broadcast
6.137 48.58 CR7AA				5.780 51.90 HJ4ABD	Bojinas, Calif.	40.0	Phone
6.137 48.58 CR7AA				5.780 51.90 HJ4ABD	Bojinas, Calif.	40.0	Phone
6.137 48.58 CR7AA				5.780 51.90 HJ4ABD	Hampilton, Bermuda	1.5	Phone
6.137 48.58 CR7AA				5.780 51.90 HJ4ABD	Beltville, Md	1.0	Frequency Standard; Tue.
6.137 48.58 CR7AA				5.780 51.90 HJ4ABD	La Ceiba, Honduras	0.1	Phone
6.137 48.58 CR7AA				5.780 51.90 HJ4ABD	Bandoeng, Java, D. E. I.	0.6	Broadcast
6.137 48.58 CR7AA				5.780 51.90 HJ4ABD	Bojinas, Calif.	40.0	Phone
6.137 48.58 CR7AA				5.780 51.90 HJ4ABD	Bojinas, Calif.	40.0	Phone
6.137 48.58 CR7AA				5.780 51.90 HJ4ABD	Hampilton, Bermuda	1.5	Phone
6.137 48.58 CR7AA				5.780 51.90 HJ4ABD	Beltville, Md	1.0	Frequency Standard; Tue.
6.137 48.58 CR7AA				5.780 51.90 HJ4ABD	La Ceiba, Honduras	0.1	Phone
6.137 48.58 CR7AA				5.780 51.90 HJ4ABD	Bandoeng, Java, D. E. I.	0.6	Broadcast
6.137 48.58 CR7AA				5.780 51.90 HJ4ABD	Bojinas, Calif.	40.0	Phone
6.137 48.58 CR7AA				5.780 51.90 HJ4ABD	Bojinas, Calif.	40.0	Phone
6.137 48.58 CR7AA				5.780 51.90 HJ4ABD	Hampilton, Bermuda	1.5	Phone
6.137 48.58 CR7AA				5.780 51.90 HJ4ABD	Beltville, Md	1.0	Frequency Standard; Tue.
6.137 48.58 CR7AA				5.780 51.90 HJ4ABD	La Ceiba, Honduras	0.1	Phone
6.137 48.58 CR7AA				5.780 51.90 HJ4ABD	Bandoeng, Java, D. E. I.	0.6	Broadcast
6.137 48.58 CR7AA				5.780 51.90 HJ4ABD	Bojinas, Calif.	40.0	Phone
6.137 48.58 CR7AA	</						



Ted Husing recruits a mowing machine to carry himself, portable relay transmitter and engineers around the lengthy fairway of a golf club while he presents a word picture of the event.



A section of the busy news department of NBC where wired material from press associations is prepared for the air. Right: A scene from the "March of Time," a pioneer news re-enactment feature.



Walter Winchell, the Broadway columnist, Lowell Thomas and Edwin C. Hill, three long-established air commentators.



It's always news when the President and the First Lady takes to the airways. The President is shown at the left in a typical railroad platform broadcast. Mrs. Roosevelt is apparently setting a record for broadcasts by Presidents' wives.

SAY IT WITH A SONG

THAT'S what sponsors believe and they do that very thing! Only they're smart enough to have talented men and women do it for them. On these pages are representative vocalists who are responsible for the tunes you hum to yourself after a night of radio listening. This branch of radio, particularly, offers big opportunities to newcomers.

The Revelers, a pioneer air quartet that's still going strong.



"Autograph please!" is the request and Lucille Manners and Lanny Ross are seen obliging.



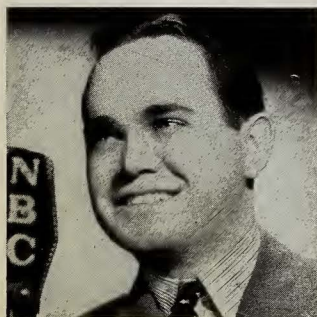
Del Casino and Loretta Clemens, whose voices are known from coast to coast.



And Harriet Hilliard and Don Ross, two more top-notch mike vocalists. Left: Recognize her! It's Martha Tilton, the girl on the cover. She's featured with Benny Goodman's Orchestra.



Songstresses Dorothy Arnold and Sylvia Froos, who have "an eye" as well as "ear" appeal.



Left to right: Claire Sherman, Jack Baker and Joan Edwards, popular network songsters. And below, left to right, are Lucy Monroe, Jane Froman and Ethel Shutta, whose voices have wide followings.



Right: A scene such as this can only occur in a dream or in a Hollywood musical talkie. In this case it's the latter. And in the foreground is Kenny Baker, the young singer who "made the grade" cinematically as well as microphonically.



YE OLDE FAMILY ALBUM

HERE are some photos from the family albums of your air favorites. Can you identify them from these photos taken when they were young? See how good your guess is before you look at the captions on the lower right.



1. He's popular as a dance conductor, singer and variety show director. He looks the same today (outside of the haircut!)



2. She's known as "The Nitwit of the Networks." She looks innocent enough here but she turned into radio's leading exponent of daffy humor.



3. These two lads used burnt cork and a Harlem dialect to gain fame.



4. This girl's name comes to mind whenever you hear "Shine on, Harvest Moon." The young man at the right scored his greatest mike success with the aid of a gong. He's pictured here as a young yachtsman making a formal (see the hat!) call on neighboring boats.



OF COURSE YOU KNEW!

1. Rudy Vallee.
2. Gracie Allen.
3. Freeman Gosden (Amos) and Charles Correll (Andy).
4. Ruth Etting and Major Bowes.

Don't
Monkey
with your
RADIO



Call us for
RADIO
SERVICE
ALL WORK
Guaranteed



We recommend...
**NATIONAL UNION : RADIO TUBES
CONDENSERS**

CALL US FOR RADIO REPAIRS

Guaranteed Work on All Makes



If your radio hums, buzzes, crackles, fades or stops playing altogether, call us!

We have scientific instruments which quickly locate radio troubles and show us exactly what must be done to cure them.

We are experts with a broad training in the science of radio repairs and are equipped to cope with problems on all makes of sets.

We use quality parts in all of our work and guarantee every job fully.

Our charges are reasonable and our service is fast.

Call us for radio repairs at any time and be assured of full satisfaction.

ALLEN ROSS

COMPLETE REPAIR SERVICE ON ALL RADIOS
SATISFACTION GUARANTEED

SILVERTON

Sycamore 7522 W

ALLAN ROSS

Radio Repair Service

Superior Ave.

Silverton, Ohio

Jefferson - 4453