

Souvenir Program



NATIONAL
BARN
DANCE



Line up for



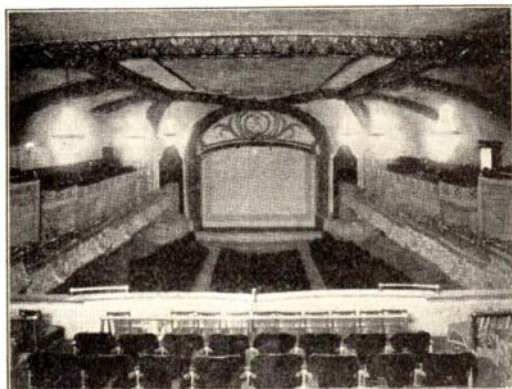
FELLOWS! These big delicious Curtiss Candy bars have got what it takes. There's a real taste thrill in every one of them. From the first nibble to the last luscious bite they're good all the way through and good for you too . . . They're all rich in Dextrose—the sugar your body uses directly for energy. They give you that quick extra pep you need for camp activity. Step up today and name your choice!



CURTISS CANDY CO., OTTO SCHNERING, PRESIDENT CHICAGO

MAPLE CITY FOUR Al, Art, Fritz and Pat
 PAT BUTTRAM "Alabama's Pride and Joy"
 HAYLOFT QUARTET "The Old Songs"
 Paul Nettinga; Dean Reed; Bob Speaker; John Neher
 HAYLOFT TRIO Verne, Lee and Mary
 THE PRAIRIE SWEETHEARTS Essie and Kay
 HOOSIER HOT SHOTS Novelty Four
 "Hezzie" (Paul) Trietsch; Kenneth Trietsch; Otto Ward; Frank Kettering
 ANN, PAT AND JUDY The Three Graces
 HENRY BURR The Dean of Ballad Singers
 HENRY HORNSBUCKLE Merle Housh
 HOOSIER SODBUSTERS Harmonica Duo—Reggie Cross; Howard Black
 BOB BALLANTINE "Harmonica Virtuoso"
 THE OCTETTE Glenn, LaVelle, Harold, Leslie, Tom, Earl, DeWayne and Les
 GRACE WILSON "The Girl with a Million Friends"
 JOHN BROWN WLS Staff Pianist
 CHRISTINE "Our Little Swiss Yodeler"
 BILL O'CONNOR—IRISH TENOR Singing Your Favorite Ballads
 GUY COLBY AND THE WLS SQUARE DANCERS Exhibition Square Dances
 THE RANGERS Ozzie Westley; Clyde Moffett; Harry Sims
 "RUSTY" GILL Singer of Sweet Songs
 "UNCLE EZRA" Owner, Operator, Chief Announcer Station EZRA, Rosedale
 WLS ORCHESTRA Herman Felber, Director
 EDDIE ALLAN "The Dixie Harmonica King"
 "SKIP" FARRELL Popular Ballads
 LUCILLE LONG Songs You Love
 CHUCK ACREE The Talkative Oklahoman
 GRAND FINALE ENTIRE COMPANY

WLS, the Prairie Farmer Station, Chicago, is owned and operated by the Agricultural Broadcasting Company, operating on 50,000 watts, 870 kilocycles.
Burridge D. Butler, President **Harold Safford, Program Director**
Glenn Snyder, Manager **Al Boyd, Production Manager**
Thomas L. Rowe, Chief Engineer



Interior view of the theater.

CHARLES LAPKA, Manager

Eighth Street Theater

This theater is for rent, sales conventions, home talent plays, etc.

Phone HARRison 6834

Program Program

NATIONAL BARN DANCE

FIRST SHOW 7:30 to 9:30 p.m. DST
ALL TIME IS CURTISS Candy Time Buy Baby Ruth Candy
SECOND SHOW 10:00 to 12:00 p.m. DST

Masters of Ceremonies:

PAT BUTTRAM **JOE KELLY** **JACK HOLDEN**
GEORGE MENARD **HOWARD BLACK**

WLS welcomes you to the National Barn Dance—a feature that millions of radio listeners in the United States and Canada have enjoyed since April, 1924. Not only does the Barn Dance reach the WLS audience, but the hour from 8:00 to 9:00 goes on a coast-to-coast NBC network of 63 stations. So many desired to witness the performances that the Barn Dance "moved" to the Eighth Street Theater in March, 1932. The entertainers who appear before you have become favorites of the air because they are just "home folks," striving to do their best to lighten your cares by bringing you wholesome fun and entertainment. They hope that you will enjoy their show from the ringing of the first cowbell until "Good Night Ladies."

PRESENTATION OF ACTS **ENTIRE COMPANY**
PRAIRIE RAMBLERS AND PATSY MONTANA Old-Time Songs and Melodies
 Chick Hurt; Jack Taylor; "Salty" Holmes; Alen Crockett; Patsy Montana
DeZURIK SISTERS Caroline and Mary Jane
ARKANSAS WOODCHOPPER Arkie
LULU BELLE "The Belle of the Barn Dance"
"SKYLAND SCOTTY" WISEMAN Singer of Mountain Folk Songs
GEORGE GOEBEL "Singing Cowboy"
EVELYN, "OUR LITTLE MAID" Evelyn Overstake



HAMLINS WIZARD OIL

Known for over 60 years

The old faithful, always on the job to relieve pain from sore muscles, lame back or any other muscular aches and pains, where external application is required.

Sold At All DRUG STORES!

The ALKA-SELTZER NATIONAL BARN DANCE Coast-to-Coast

BROADCAST FROM WLS EVERY

SATURDAY P.M.
63 NBC STATIONS

9:00-10:00 p. m. **EDST**
WJZ . . . New York City
WBZ . . . Boston
WBZA . . . Springfield
WFIL . . . Philadelphia
WEAN . . . Providence
WICC . . . Bridgeport
WEBR . . . Buffalo
KDKA . . . Pittsburgh
WJTN . . . Jamestown
WHAM . . . Rochester
WSYR . . . Syracuse

8:00 to 9:00 p. m. **EST**
WBAL . . . Baltimore
WMAL . . . Washington
WSPD . . . Toledo
WXYZ . . . Detroit
WLW . . . Cincinnati
WHK . . . Cleveland
WOOD . . . Grand Rapids
WRTD . . . Richmond
WTAR . . . Norfolk

9:00 - 10:00 p. m. **CST**
KWK . . . St. Louis
WMT . . . Cedar Rapids
KSO . . . Des Moines
KOIL . . . Omaha
WREN . . . Kansas City
WAVE . . . Louisville
WTCN . . . Minn.-St. Paul
WDAY . . . Fargo
WBRC . . . Birmingham
WMC . . . Memphis
WBCB . . . Superior
KTHS . . . Hot Springs
KGNC . . . Amarillo
KMA . . . Shenandoah
WKY . . . Oklahoma City
KTBS . . . Shreveport
KARK . . . Little Rock
KVOO . . . Tulsa
WJDX . . . Jackson
WGBF . . . Evansville
WBOW . . . Terre Haute

8:00 - 9:00 p. m. **CDST**
WLS . . . Chicago

7:00 to 8:00 p. m. **CST**
WSB . . . Atlanta
WSMB . . . New Orleans
WBAP . . . Dal.-Ft. Worth
KPRC . . . Houston
WOAI . . . San Antonio

8:00 to 9:00 p. m. **MST**
KTAR . . . Phoenix
KGHL . . . Billings
KGIR . . . Butte
KDYL . . . Salt Lake City
KOB . . . Albuquerque
KOA . . . Denver
KPFA . . . Helena
KSEI . . . Pocatello
KTPI . . . Twin Falls
KIDO . . . Boise
KVOA . . . Tucson

7:00 to 8:00 p. m. **PST**
KPO . . . San Francisco
KFI . . . Los Angeles
KFW . . . Portland
KOMO . . . Seattle
KHQ . . . Spokane



BARN DANCE CAST

Seated on Floor of Stage (left to right): Possum Tuttle; Evelyn Overstake; Pat Butt-ram; Jack Holden; So-phia Germanich; Lu-cille Long; Joe Kelly; George Goebel; Elleen Jensen; Hoosier Sod-busters (Reggie and Howard); Tom Rowe; Christine; Howard Chamberlain; Jimmie Daugherty.

Seated on Bales of Hay, first row (left to right): Ford Rush; Ralph Emerson; Paul Nettinga; Jack Eliot; Phil Kalar; Wm. Rach-erbaumer (Rocky); Lee, Verne and Mary; Uncle Ezra; Lulu Belle; Scotty; Mar-garet Dempsey; Helen Jensen; Pa and Ma Smithers; Red Foley.

Standing, third row (left to right): Hoosier Hot Shots (Gabe, Ken, Hezzie and Frank); Grace Wilson; Prairie Ramblers (Jack, Chick, Patsy Montana, Tex, Salty); Henry Horns-buckle; Chuck & Ray; Bill O'Connor; Pete Lund.

Standing, fourth row (left to extreme right of stage): Walt Wade; Glenn Snyder; Margaret Sweeney; John Brown; Three Neighbor Boys; Max Terhune; Maple City Four (Pat, Art, Al and Fritz); Eddie Allan; Oscar Morgan; Tom Owen; Otto and His Novelodeons (Bill, Ken, Otto, Zeb, Bud-dy); Bill Vickland; Arkie; John Lair; Hill-toppers (Tommy, Don, Ernie); Roy Knapp; Al Boyd; Harold Saf-ford; George Biggar.

Standing, last row (left to right): Glenn Taffinger; Lavelle Car-ter; Leslie Clucas; Tom Blanchard; Tumble Weed; Romaine Low-dermilk; Leslie Dole; Earl Johnson; De-wayne Carnes; Harold Townsend; Jack Erm-attinger; Square Dan-cers.

In Hayloft: Square Dancers.

BE WISE--Alkalize with ALKA-SELTZER

Whenever you want prompt, pleasant relief from the discomfort of a headache, an upset stomach, distress after meals, acid indigestion, a cold, or that miserable "morning-after" feeling, call Alka-Seltzer to the rescue. Just dissolve one or two of these modern, effervescent tablets in a glass of water, then drink the refreshing, pleasant-tasting solution it makes. Do this and see how much better it makes you feel. And don't forget that it also helps overcome the excess acid condition which so often accompanies our everyday aches and pains.

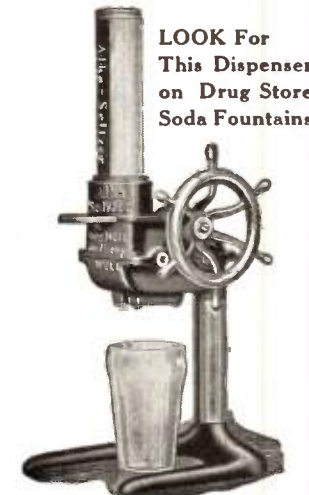
Ask for Alka-Seltzer when you want REAL relief--in a hurry.



At All Drug Stores

YOUR DRUGGIST

. . . . has Alka-Seltzer Tablets in 30 cent and 60 cent packages and any drug-gist will serve you a glass of Alka-Seltzer at his soda fountain.

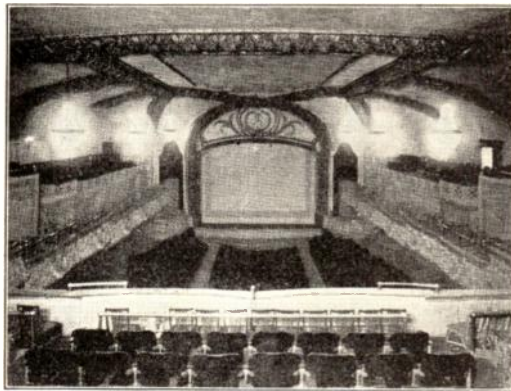


LOOK For
This Dispenser
on Drug Store
Soda Fountains

MAPLE CITY FOUR	Al, Art, Fritz and Pat
PAT BUTTRAM	"Alabama's Pride and Joy"
HAYLOFT QUARTET	"The Old Songs"
Paul Nettinga; Dean Reed; Bob Speaker; John Neher	
HAYLOFT TRIO	Verne, Lee and Mary
THE PRAIRIE SWEETHEARTS	Essie and Kay
HOOSIER HOT SHOTS	Novelty Four
"Hezzie" (Paul) Trietsch; Kenneth Trietsch; Otto Ward; Frank Kettering	
ANN, PAT AND JUDY	The Three Graces
HENRY BURR	The Dean of Ballad Singers
HENRY HORNSBUCKLE	Merle Housh
HOOSIER SODBUSTERS	Harmonica Duo—Reggie Cross; Howard Black
BOB BALLANTINE	"Harmonica Virtuoso"
THE OCTETTE	Glenn, LaVelle, Harold, Leslie, Tom, Earl, DeWayne and Les
GRACE WILSON	"The Girl with a Million Friends"
JOHN BROWN	WLS Staff Pianist
CHRISTINE	"Our Little Swiss Yodeler"
BILL O'CONNOR—IRISH TENOR	Singing Your Favorite Ballads
GUY COLBY AND THE WLS SQUARE DANCERS	Exhibition Square Dances
THE RANGERS	Ozzie Westley; Clyde Moffett; Harry Sims
"RUSTY" GILL	Singer of Sweet Songs
"UNCLE EZRA"	Owner, Operator, Chief Announcer Station EZRA, Rosedale
WLS ORCHESTRA	Herman Felber, Director
EDDIE ALLAN	"The Dixie Harmonica King"
"SKIP" FARRELL	Popular Ballads
LUCILLE LONG	Songs You Love
CHUCK ACREE	The Talkative Oklahoman
GRAND FINALE	ENTIRE COMPANY

WLS, the Prairie Farmer Station, Chicago, is owned and operated by the Agricultural Broadcasting Company, operating on 50,000 watts, 870 kilocycles.

Burridge D. Butler, President
Glenn Snyder, Manager
Harold Safford, Program Director
Al Boyd, Production Manager
Thomas L. Rowe, Chief Engineer



Interior view of the theater.

CHARLES LAPKA, Manager

Eighth Street Theater

This theater is for rent, sales conventions, home talent plays, etc.

Phone HARRison 6834

Program Program

NATIONAL BARN DANCE

FIRST SHOW 7:30 to 9:30 p.m. DST

ALL TIME IS
CURTISS Candy Time
Buy Baby Ruth Candy

SECOND SHOW 10:00 to 12:00 p.m. DST

Masters of Ceremonies:

PAT BUTTRAM	JOE KELLY	JACK HOLDEN
GEORGE MENARD		HOWARD BLACK

WLS welcomes you to the National Barn Dance—a feature that millions of radio listeners in the United States and Canada have enjoyed since April, 1924. Not only does the Barn Dance reach the WLS audience, but the hour from 8:00 to 9:00 goes on a coast-to-coast NBC network of 63 stations. So many desired to witness the performances that the Barn Dance "moved" to the Eighth Street Theater in March, 1932. The entertainers who appear before you have become favorites of the air because they are just "home folks," striving to do their best to lighten your cares by bringing you wholesome fun and entertainment. They hope that you will enjoy their show from the ringing of the first cowbell until "Good Night Ladies."

PRESENTATION OF ACTS	ENTIRE COMPANY
PRAIRIE RAMBLERS AND PATSY MONTANA	Old-Time Songs and Melodies
Chick Hurt; Jack Taylor; "Salty" Holmes; Alen Crockett; Patsy Montana	
DeZURIK SISTERS	Caroline and Mary Jane
ARKANSAS WOODCHOPPER	Arkie
LULU BELLE	"The Belle of the Barn Dance"
"SKYLAND SCOTTY" WISEMAN	Singer of Mountain Folk Songs
GEORGE GOEBEL	"Singing Cowboy"
EVELYN, "OUR LITTLE MAID"	Evelyn Overstake



HAMLINS WIZARD OIL

Known for over 60 years

The old faithful, always on the job to relieve pain from sore muscles, lame back or any other muscular aches and pains, where external application is required.

Sold At All DRUG STORES!

The ALKA-SELTZER NATIONAL BARN DANCE Coast-to-Coast

BROADCAST FROM WLS EVERY SATURDAY P.M. 63 NBC STATIONS

9:00-10:00 p.m. **EDST**
WJZ . . . New York City
WBZ . . . Boston
WBZA . . . Springfield
WFIL . . . Philadelphia
WEAN . . . Providence
WICC . . . Bridgeport
WEHR . . . Buffalo
KDKA . . . Pittsburgh
WJTN . . . Jamestown
WHAM . . . Rochester
WSYR . . . Syracuse

8:00 to 9:00 p.m. **EST**
WBAL . . . Baltimore
WMAL . . . Washington
WSPD . . . Toledo
WXYZ . . . Detroit
WLW . . . Cincinnati
WHK . . . Cleveland
WOOD . . . Grand Rapids
WRTD . . . Richmond
WTAR . . . Norfolk

9:00-10:00 p.m. **CST**
KWK . . . St. Louis
WMT . . . Cedar Rapids
KSO . . . Des Moines
KOIL . . . Omaha
WREN . . . Kansas City
WAVE . . . Louisville
WTCN . . . Minn.-St. Paul
WDAY . . . Fargo
WBRC . . . Birmingham
WMC . . . Memphis
WEBC . . . Superior
KTIS . . . Hot Springs
KGNC . . . Amarillo
KMA . . . Shenandoah
WKY . . . Oklahoma City
KTBS . . . Shreveport
KARK . . . Little Rock
KVOO . . . Tulsa
WJDX . . . Jackson
WGBF . . . Evansville
WBOW . . . Terre Haute

8:00-9:00 p.m. **CDST**
WLS . . . Chicago

7:00 to 8:00 p.m. **CST**
WSB . . . Atlanta
WSMB . . . New Orleans
WBAP . . . Dal.-Ft. Worth
KPRC . . . Houston
WOAI . . . San Antonio

8:00 to 9:00 p.m. **MST**
KTAR . . . Phoenix
KGHL . . . Billings
KGIR . . . Butte
KDYL . . . Salt Lake City
KOB . . . Albuquerque
KOA . . . Denver
KPFA . . . Helena
KSEI . . . Pocatello
KTFI . . . Twin Falls
KIDO . . . Boise
KVOA . . . Tucson

7:00 to 8:00 p.m. **PST**
KPO . . . San Francisco
KFI . . . Los Angeles
KGW . . . Portland
KOMO . . . Seattle
KHQ . . . Spokane



BARN DANCE CAST

Seated on Floor of Stage (left to right): Possum Tuttle; Evelyn Overstake; Pat Buttram; Jack Holden; Sophia Germanich; Lucille Long; Joe Kelly; George Goebel; Eileen Jensen; Hoosier Sodbusters (Reggie and Howard); Tom Rowe; Christine; Howard Chamberlain; Jimmie Daugherty.

Seated on Bales of Hay, first row (left to right): Ford Rush; Ralph Emerson; Paul Nettinga; Jack Eliot; Phil Kalar; Wm. Racherbaumer (Rocky); Lee, Verne and Mary; Uncle Ezra; Lulu Belle; Scotty; Margaret Dempsey; Helen Jensen; Pa and Ma Smithers; Red Foley.

Standing, third row (left to right): Hoosier Hot Shots (Gabe, Ken, Hezzie and Frank); Grace Wilson; Prairie Ramblers (Jack, Chick, Patsy Montana, Tex, Salty); Henry Hornsbuckle; Chuck & Ray; Bill O'Connor; Pete Lund.

Standing, fourth row (left to extreme right of stage): Walt Wade; Glenn Snyder; Margaret Sweeney; John Brown; Three Neighbor Boys; Max Terhune; Maple City Four (Pat, Art, Al and Fritz); Eddie Allan; Oscar Morgan; Tom Owen; Otto and His Novelodeons (Bill, Ken, Otto, Zeb, Buddy); Bill Vickland; Arkie; John Lair; Hilltoppers (Tommy, Don, Ernie); Roy Knapp; Al Boyd; Harold Safford; George Biggar.

Standing, last row (left to right): Glenn Taffinger; Lavelle Carter; Leslie Clucas; Tom Blanchard; Tumble Weed; Romaine Lowdermilk; Leslie Dole; Earl Johnson; DeWayne Carnes; Harold Townsend; Jack Ermatinger; Square Dancers.

In Hayloft: Square Dancers.

BE WISE--Alkalize with ALKA-SELTZER

Whenever you want prompt, pleasant relief from the discomfort of a headache, an upset stomach, distress after meals, acid indigestion, a cold, or that miserable "morning-after" feeling, call Alka-Seltzer to the rescue. Just dissolve one or two of these modern, effervescent tablets in a glass of water, then drink the refreshing, pleasant-tasting solution it makes. Do this and see how much better it makes you feel. And don't forget that it also helps overcome the excess acid condition which so often accompanies our everyday aches and pains.

Ask for Alka-Seltzer when you want REAL relief--in a hurry.



At All Drug Stores

YOUR DRUGGIST

... has Alka-Seltzer Tablets in 30 cent and 60 cent packages ... and any druggist will serve you a glass of Alka-Seltzer at his soda fountain.



LOOK For
This Dispenser
on Drug Store
Soda Fountains

Meet JOHN MONTGOMERY

President,

Montgomery Motor
Sales Company

2300 West Madison Street



Livest FORD, MERCURY
and LINCOLN ZEPHYR
Dealer in Chicago.



You can't go wrong if you let Mont-
gomery bid on your next car deal . . .

Phone MONroe 5900.

Finest Line of Used Cars in Chicago



*Complete Ford, Mercury and Lincoln
Zephyr Service . . . Genuine Factory Parts*

MONTGOMERY MOTOR SALES CO.
2300 W. MADISON ST. - CHICAGO, ILLINOIS

MURPHY'S

BIG PRIZE CONTEST

121 VALUABLE PRIZES

- 1—ALLIS-CHALMERS 2-PLOW TRACTOR
- 1—ALLIS-CHALMERS ALL-CROP HARVESTER
- 1—1939 OLDSMOBILE 60 TWO DOOR SEDAN
- 1—PURE BRED BELGIAN STUD COLT
- 1—PURE BRED GUERNSEY BULL CALF
- 1—SET (4) GILLETTE TACITURN TIRES & TUBES
- 2—MORRIS B. SACHS NORTHERN SEAL FUR COATS
- 1—DRI-GAS STOVE & TWO DRUMS OF DRI-GAS
- 1—HEAVY DUTY ABC FARM WASHER
- 3—8-TUBE STEWART-WARNER CONSOLE RADIOS
- 1—WALSH NO-BUCKLE HARNESS
- 3—ROGERS OVERLAID SILVERWARE SETS (50 PIECES)
- 3—94-PIECE DINNERWARE SETS
- 50—MURPHY'S FEED, 1 BAG

BIG PRIZES FOR BOYS AND GIRLS

- 1—SHETLAND PONY, WITH SADDLE AND BRIDLE
- 10—MEAD CRUSADER BICYCLES
- 20—BOB FELLER'S BASEBALL GLOVES
- 20—WESTFIELD WRIST WATCHES

HOW TO WIN: Complete information regarding this easy, simple contest is given every Saturday night on the Murphy Jamboree program at 8:00 p. m. CST over WLS, Chicago, and at 8:30 p. m. CST over WHO, Des Moines. Be sure to tune in these stations and learn how you may win one of these generous, worthwhile prizes. After you've heard how easy it is to win, you'll want to send in several entries. And of course, the more entries you send in, the better your chances are.

But hurry! This contest opens May 13, 1939, and closes midnight July 31, 1939. So don't delay. Listen to the Murphy radio program over WLS or WHO and get the complete details before it's too late.

THE MURPHY PRODUCTS COMPANY
BURLINGTON, WISCONSIN

NOTICE: If you have any farmer friends who you think would be interested in winning one of these generous prizes, tear out this page and send it to them or write them about this contest.