

Radio Foto Log

15¢

PUBLISHED BY NATIONAL UNION RADIO CORPORATION
57 STATE STREET NEWARK, NEW JERSEY



MARTHA TILTON

Vocal Star of Benny Goodman's Swing



TELEVISION
IN THE HOME



PROFESSOR QUIZ



CHARLIE MCCARTHY
AND ANDREA LEEDS

*You can
play any night*
if your
**RADIO'S
RIGHT!**

CBS
FOR BEST RECEPTION

NATIONAL UNION RADIO TUBE'S
MUTUAL
FOR BEST RECEPTION

NATIONAL UNION RADIO TUBE'S
NBC
FOR BEST RECEPTION

**NEWS
COMEDY
DRAMA**

**SYMPHONY
DANCE BANDS
OPERA**



NATIONAL UNION

RADIO TUBES AND CONDENSERS

Ask us about **NEW SETS**
or Call us for

EXPERT RADIO SERVICE



Radio Foto Log

PUBLISHED BY NATIONAL UNION RADIO CORPORATION
57 STATE STREET NEWARK, NEW JERSEY

Manufacturers of National Union Radio Tubes and Parts

EDITED BY SAMUEL KAUFMAN

The Listener Always Wins

PROGRAM executives of leading radio stations and advertising agencies are ever on the alert for new ideas that will win mass audiences. The competition to win and hold listeners to air features is always keen. Keen rivalry is demonstrated between sponsors of similar wares as well as between advertisers who maintain simultaneous broadcasting schedules.

Radio editors of newspapers and magazines have often indicated that their readers disliked two stellar hours on the air at the same time inasmuch as they were forced to forego one in favor of the other and it was difficult to make a choice.

However, sponsors haven't got much choice in the matter of time. True, there are twenty-four hours to the day but most big advertisers desire the evening hours between 7 and 10 o'clock when they believe they can reach the biggest possible audiences.

Rather than the listener *losing* one good program by listening to another excellent feature on the air at the same time, he should remember that the high standard of the broadcast to which he's listening is maintained by the scheduling of a high-calibre hour on the other station or network. He's not losing anything. Rather, he's given a wider choice of program fare and the odds of giving him a program he'll enjoy are considerably in his favor.

From season to season, the main classifications of radio programs retain large followings they have earned through the years. Dance bands, comedy, drama, news, variety, classical music and other headings are never replaced. But new ideas as well as new stars do constantly pop into the radio schedules and some of them reach the high-salary and high-popularity brackets in very short time.

Audience-participation shows have been gaining larger and larger followings since they came into being on a big scale a couple of seasons back. Amateur hours, under this heading, were the opening guns in the campaign to recruit Mr. Next Door Neighbor for microphone appearances. Now the lead in audience participation has been taken by the many quiz, spelling bee and "what do you know?" features that stud program schedules.

But the heavy draw of new ideas—even the smash hits—doesn't dig into the popularity of such perennial headliners as Jack Benny, Rudy Vallee, Bing Crosby and the many other topnotch stars who helped make broadcasting the leading entertainment medium it now is.

The intriguing thing about radio listening is that it always brings surprises and thrills in new offerings as well as reliably presenting the best of the old-established stars. And listeners, through experience, know that forthcoming features are "sure things" in the way of good, wholesome entertainment.



Jack Benny Comes to Town

KNOWLEDGE IS FUN

YOU may never have thought so when you went to school. But since radio quizz programs came into popularity, it's been fun indeed to participate in the "what do you know?" games. Sidewalk interviews, studio spelling and question bees, word games and even musical-guessing programs have soared the heights of radio fame, many of these features ranking among the most popular (according to surveys) on the air. One reason why the listener gets an added kick out of the quizz features is that he has the chance of participating in the mike game himself. He can test his own wits against the microphone contestants. But he must remember that he has two advantages. He can look the answer up in dictionaries, atlases and other reference books, and there is no chance of mike-fright.



"True or False?" asks Dr. Harry Hagen after he reads a statement. No, the placard-toting men are not pickets. It's customary on quiz programs to have the contestants wear their names on cards over their chests so that the master-of-ceremonies can address them.



Left to right: Max Eastman, author, humorist and raconteur, who heads the CBS Word Game; Professor Quiz (Craig Earl) paying off a winner with silver dollars, and Paul Wing, master of the NBC Spelling Bee.



Three topnotch cross-examiners: (left to right): "Uncle Jim" McWilliams of Question Bee fame; Kay Kyser, the orchestra leader who directs the musical quizz show known as the Kollege of Musical Knowledge, and Franklin P. Adams ("F. P. A.") of NBC's "Information Please."



VOX POP

THIS program, conducted by Parks Johnson and Wallace Butterworth, was one of the first of the quiz programs and claims to be the first network show of its type. The show differs from the other question-and-answer periods in that it is broadcast from public and semi-public spots and never from a studio. It used to go on the air from street corners until traffic congestion caused it to be moved into hotel lobbies, railroad terminals and the like. Passers-by, unrehearsed, are recruited from the crowd that gathers around the mike and the result is an amusing, informative quiz program which is greatly enhanced by the spontaneous humor arising from Johnson's and Butterworth's banter with their guests. Turn over to the next page and see how you would score if you happened to be selected for the Vox Pop broadcast. Parks Johnson selected the questions (and parenthetical answers) especially for readers of Radio Foto Log.

Here they are: Vox Poppers Parks Johnson and Wallace Butterworth.



Left: They're never too young to know the answer! Here's a five-year-old doing his stuff! Right: The English vicar who married the Duke and Duchess of Windsor—Rev. Robert Anderson Jardine—and a Chinese nurse meet for a session of Q's and A's wit!: Johnson.



Even a cigar store Indian pops up at the Vox Pop mike, but we doubt whether he was interviewed. Right: Harry M. Nanos—noted for his likeness to the late Will Rogers—takes to the air with Parks and Wally.

WHAT DO YOU KNOW?

You've often had the answer while listening at home much quicker than the fellow at the mike. Here's a specimen mike quiz prepared by Parks Johnson. Try it with your family and friends and figure how you would have fared if you faced the Vox Pop mike.

QUESTIONS

1. A monkey climbing a greased pole 30 feet high goes up 3 feet in 10 seconds. He slips back 2 feet in 5 seconds. How long will it take him to reach the top?
2. Quickly: 11 is $1/6$ th of 3 times what number?
3. Is the half of a hundred the same as 100 divided by $1/2$?
4. If you stand on your head, face to the East, in which direction is your right shoulder pointed?
5. Would it be the same if you were standing on your feet, facing East?
6. If you drive 60 miles at 20 m.p.h. going, and return at 30 m.p.h., what is your "AVERAGE" speed for the 120 miles?
7. Two candles, one will burn 4 hours and the other will burn five hours. Both are lighted simultaneously. Both are extinguished when what remains of one is exactly four times as long as what remains of the other. How long had the candles been burning?
8. If I work the first day for \$100, the second day for \$50, the third day for \$25, and so on . . . how many days will I work before I have earned \$200?
9. You have an engagement for 12 noon. Your friend phones that he must "Advance" the engagement a half hour. At what time will you meet him?
10. In 15 seconds tell me how to change a twenty-dollar bill into dollars and half-dollars so that I will have ONE MORE half-dollar than I will dollars.
11. If "This and That" plus one-half of "This and That" equals 11, how much is "This and That"?
12. If a person is consistently inconsistent, would you say that person is consistent or inconsistent?
13. If a coat is turned inside out, would the right arm still go into what was the right sleeve?
14. Would you think a "Hugger-nugger" is a loving sort of a person?
15. Which is farthest West: Detroit, Michigan—Pensacola, Florida, or Indianapolis, Indiana?
16. Honestly, DO you know how many of your own teeth you now have in your mouth?
17. A bicycle rider travels a mile in three minutes WITH the wind; he returns over the same course in four minutes AGAINST the wind. How fast could he make the mile if there were NO wind?
18. Which is the longer, a cigarette or a stick of chewing gum?
19. Is the Sahara desert flat, rolling or mountainous?
20. What abbreviations for State names make complete words?
21. I start work Monday morning at \$1 per day. You start work Tuesday morning at \$2 per day. How many days will you work before you will have earned TWICE as much as I?
22. How many times per day does the ordinary watch tick?
23. In the line: "Little Miss Muffet sat on a TUFFETT" . . . what is "tuffett"?
24. Quickly . . . count from 10 to 1, backwards.
25. How many STATES in the United States?
26. Do the words "In God we Trust" appear on all current U. S. Coins?
27. On every package of ordinary pins there appears the initials: "S. C.", "M. C." or "B. C.". What do these mean?
28. If a chicken has a gizzard what has an "Izzard"?
29. If the laundry goes out Monday morning and is returned Thursday noon, what is the minimum number of shirts a man must have in order to wear a clean shirt each morning?
30. Assume it takes 30 seconds to toast one side of a slice of bread. Now, in an old-style two-slice toaster, what's the shortest time it will take to toast THREE slices of bread on BOTH sides?

31. If Tom, Dick and Harry agree to lunch together, each bearing his own share of the cost, what about this situation. Tom brings 6 eggs; Dick brings 3 eggs; Harry brought NO eggs, but tossed 15c on the table. HOW should the 15c be divided?
32. Take an ordinary sheet of letter paper, business size. Tear it in two, and stack the halves on top of each other. Do this fifty times. How high will the stack be after the fiftieth tear and stacking?
33. A barrel has three spigots. They empty the barrel in 15, 30 and 45 minutes, respectively. If ALL are opened at the same time, how long will it take to empty the barrel?

TRICKS TRIED AGAINST DESIGNATED TIME LIMITS:

Say Alphabet backward in 30 seconds.

Spell one's full name backward in 15 seconds.

Say months of year backward in 10 seconds.

33. ing will answer from 15 to 30 minutes;
32. 8-2/11ths minutes, though many without think-
31. 6 eggs;
30. TOM gets the 15c, as Harry ate 3 of Tom's
29. ing sides of Nos. 2 and 3.
28. No. 1 and No. 2. Then toast final side of
27. 1 1/2 minutes, not 2 minutes. Toast one side of
26. Minimum of eleven shirts.
25. Our alphabet . . . the letter "Z".
24. Small, medium or Big (HOKKIN, Cockin being
23. an old Scotch-English term meaning "Pin".
22. piece, or the Indian Head one-cent coin.
21. NO, they do not appear on either five-cent
20. Pennsylvania and Virginia.
19. monewalib", viz: Kentucky, Massachusetts,
18. Technically, forty-four States and four "Com-
17. Ah, ah . . . it should be 1, 2, 3, etc.!
16. bushel. The probably sat on the inverted
15. An old English measure, the equivalent of half-
14. 432,000 times per 24-hour day.
13. Never.
12. (Arc) O; Kent; Wash.
11. Ark; Ill; Ida; La; Me; Mass; Miss; Neb;
10. Unabridged.
9. 10,000 feet above sea level—see Webster's
8. The Sahara desert contains mountains up to
7. The stick of chewing gum.
6. of the seven!
5. You forget the wind HELEFED him only 3 of
4. NOT 3 1/2 minutes, but 3 minutes, 26 seconds.
3. Estimated not one in a thousand knows.
2. Pensacola, Florida, farthest West.
1. these days;
0. privacy or secrecy about hugging or mugging
- "continuation, a muddle". At any rate, NO
- any, secrecy, or in privacy, secrecy." (Dr. also,
- Hugger-Mugger, according to Webster is: "pri-
- No.
- (?)
- 2 x 3-2/3, or 7-1/3.
- or 3-2/3; 2/2, or "This and That" then equals
- 7-1/3. 3/2 equals 1 1/2 equals 1 1/3 of 11.
- Fourteen halves, and 13 dollars.
- 12:30!
- though or personally, I would not show up until
- event or date", so you would meet at 11:30—
- Webster says "Advance; to make earlier, as an
- Never.
- 3 hours and 45 min.
- NOT 25, but 24 miles per hour.
- No.
- No.
- North.
- No.
- (22).
- seconds, total 415 seconds, or 6:15.
- surges or 280 seconds; 27 back stops or 135
- 6 minutes and 55 seconds. He uses 28 upward

ANSWERS (No fair peek!)

Mr. Next Door Neighbor Takes the Air

THE quiz programs mentioned on the preceding pages are but one of several popular forms of audience-participation shows. There are amateur hours, public forums and comedy and variety hours in which the listener is heard from by voice, applause and laughter. Audience-participation shows have gained tremendous popularity probably because listeners like to hear from Mr. Next Door Neighbor as well as from professional broadcasters.



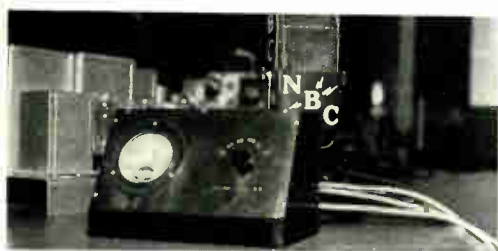
Tickets to broadcasts are in great demand



"America's Town Meeting of the Air" has been cited as the best example of freedom of the air. Here, the listener can debate with the celebrities on the platform on topics of the day. George V. Denny, Jr., is shown at the left giving the floor to a questioner who (above) is seen taking it.



Jerry Belcher (left) takes his mike right into homes of listeners. Center: Lyman Bryson (at head of table) invites "typical citizens" to dinner for the extemporaneous "People's Platform" feature of CBS. The mikes are hidden under napkins to keep the guests immune of mike-fright. Right: Major Boves and his amateurs hold their grip on popularity. Here he is with a fellow playing two musical saws.



The applause and laughter of a typical studio audience such as the one portrayed on the right are measured by the "applause meter" shown above.





KING COMEDY STILL REIGNS

FROM the very beginning of radio entertainment, comedy has never been displaced as a smash hit classification on stations' schedules. Listeners like to laugh and the broadcasters and sponsors spare no expense in obtaining the world's best funsters. Many of the comedy stars have held their popularity through the years but declare it's a tough assignment to get new material for every broadcast.

George Burns and Gracie Allen, one of the highest-paid comedy teams in the land.



"Feud for Thought" might be the caption of the photo at the left showing Jack Benny and Fred Allen meeting. Above: "The Bee or not The Bee—that is the question" Jack seems to wonder as he raises his bow.



Left: Bob Burns, who skyrocketed to comedy stardom and who many believe comes closest to filling the philosopher-comedy role of the late Will Rogers. Above: Two of the old reliables, Al Jolson and Joe Penner. In center oval: Oliver Wakefield, the English comedian who scored favorably in his American broadcasts.



Top: Two popular comedy pairs—Marion and Jim Jordan (Fibber McGee and Molly) and (right) Stoopnagle and Budd. The latter pair, whose real names are F. Chase Taylor and Wilbur Budd Hulick, have popped up solo in recent seasons but singly or doubly, they're great fun!



Parkyakarkas (Harry Einstein), The Mad Russian (Bert Gordon) and the man who introduced both to big-time broadcasts—Eddie Cantor.



Left: Pick and Pat (Pick Malone and Pat Padgett) talk things over with their production man—Frank MacMahon.



Above: Teddy Bergman and Jack Haley who add merriment to the airwaves. Right: The Stroud Twins. Clarence brings the mike to brother Claude. The twins have scored sensationally with Charlie McCarthy.



Left: Kaltenmeyer's Kindergarten has a recess. Left to right, Professor August Kaltenmeyer (Bruce Kamman), Izzy Finkelstein (Johnny Wolf), Percy Van Schuyler (Merrill Fugit), Cornelius Callahan (Billy White) and Johnny Johnson (Thor Ericson). Above: Sam Hearn, better known as Schlepperman whose "Hullo, Stranzer" remark is a famous tag-line.



The movies are the source of considerable comedy material. Andy Devine and Charles Butterworth (above) are popular mike performers. Left: "Tim and Irene"—Tim Ryan and Irene Noble, do a comedy-ventriloquist routine for the camera.



Bob Hope used the air as a short cut to screen stardom after many years on the stage. He's shown at the left with his comely nemesis, Honeychile. He's known to change his mike partners from season to season, so it's not always the same Honeychile you hear. Above: Billy House, star of "The Laugh Liner" and Cal Tenny, a youngster who, like Bob Burns, has been nominated as a successor to the late Will Rogers.

KID STARS AND KID PROGRAMS

A LARGE share of each day's program schedule is devoted to features of especial appeal to youngsters. Sponsors feel that if they reach the children with good programs they are building sales for the future. Network standards for children's programs are very high and each new feature must pass a board of experts on child welfare and psychology.

Young Deanna Durbin who followed her radio success with film triumphs has earned a grown-up as well as juvenile following.



Walter Tetley, veteran child dramatic performer, who now shares time between radio and talkie mikes. Hollywood scouts signed him after his spectacular supporting roles with leading air stars. Right: Madge Tucker, director of NBC's children's features and discoverer of many talented youngsters.



"Jolly Bill" Steinke, conductor of a novel junior news program, and Hendrick Willem Van Loon, author and artist, who is as popular with child listeners as with grown-ups, a knack few writers or broadcasters can achieve.



Irene Wicker, radio's famous "Singing Lady". Below: Uncle Don (Donald Carney), popular children's program story-teller, singer, pianist and master-of-ceremonies.



A LITTLE BIT OF EVERYTHING

IT'S a standard gag around the studios that whenever a sponsor has a lot of money to spend on an airshow, he auditions all types of programs and finally winds up with a band, a comedian, a vocal star, a dramatic sketch and a master-of-ceremonies, or, in other words, a variety show. It's not always a sure-fire formula but there are many exceptional hit combinations under the heading of "Variety."



Don Ameche, popular singer, actor and master-of-ceremonies of the Chase & Sanborn Hour.



Leaders of three top-notch variety shows. Left to right: Rudy Vallee, Kate Smith and Bing Crosby, all of whom are versatile entertainers as well as program directors.



It's "Good News" to many when the program of that name hits the air. Four of its headliners are shown above: Left to right: Frank Morgan, the hesitant conversationalist of the films; Hanley Stafford, the exasperated daddy of Baby Snooks; Meredith Willson, musical director, and Robert Taylor, the movie star serving as master-of-ceremonies. Right: Ben Bernie, graduated from bandsman to program "m.c." is shown with Sophie Tucker.

DON'T BE YOURSELF!

A FEW radio entertainers have proved that it pays to follow that slogan. In recent seasons, persons who could do exceptional stunts with their voices won lucrative long-time contracts. Ventriloquism, mimicry and other vocal oddities, all of which were once thought unsuitable for the air, are now acknowledged smash-hit formulas.



That impish but lovable Charlie McCarthy and his master (?), Edgar Bergen, try out a script. Below: Bergen shows that even a ventriloquist's dummy demands a wardrobe suited to his status.



Fanny Brice, veteran of the musical comedy and vaudeville stages, in her Baby Snooks characterization—a radio sensation.



Left: Walt Disney, creator of Mickey Mouse, Donald Duck and numerous other imaginary cartoon characters who magically come to life on air programs. Center: Arthur Boran, a first-rate radio mimic who can impersonate the air's "great." Right: Tommy Riggs whose vocal creation of Betty Lou brought him nation-wide fame.

Call Letters	Location	Frequency (K.C.)	Power (Watts)	Call Letters	Location	Frequency (K.C.)	Power (Watts)
KABC	San Antonio, Tex.	1420	100-250	KGEK	Sterling, Colo.	1200	100
KABR	Aberdeen, S. Dak.	1420	100	KGER	Long Beach, Calif.	1380	1000
KADA	Ada, Okla.	1200	100	KGEZ	Kalispell, Mont.	1310	100
KALB	Alexandria, La.	1210	100	KGFF	Shawnee, Okla.	1420	100-250
KALE	Portland, Ore.	1300	1000	KGFI	Brownsville, Tex.	1500	100-250
KAND	Corsicana, Tex.	1310	100	KGFI	Los Angeles, Calif.	1200	100
KANS	Wichita, Kans.	1210	100	KGFL	Roanoke, N. Mex.	1370	100
KARK	Little Rock, Ark.	890	500-1000	KGFW	Kearney, Nebr.	1310	100
KARM	Fresno, Calif.	1310	100	KGFX	Pierre, S. Dak.	630	200
KASA	Elk City, Okla.	1210	100	KGGC	San Francisco, Calif.	1420	100
KAST	Astoria, Ore.	1370	100	KGGF	Coffeyville, Kans.	1010	1000
KATE	Albert Lea, Minn.	1420	250	KGGM	Albuquerque, N. Mex.	1230	1000
KAWM	Gallup, N. Mex.	1500	100	KGHF	Pueblo, Colo.	1320	500
KBIX	Muskogee, Okla.	1500	100	KGHI	Little Rock, Ark.	1200	100-250
KBKR	Baker, Ore. (C.P.)	1500	100	KGHL	Billings, Mont.	780	1000-5000
KBND	Bend, Ore. (C.P.)	1310	100-250	KGIR	Butte, Mont.	1340	1000-2500
KBPS	Portland, Ore.	1420	100	KGIW	Alamosa, Colo.	1420	100
KBST	Big Spring, Tex.	1500	100	KGKB	Tyler, Tex.	1500	100-250
KBTM	Jonesboro, Ark.	1200	100	KGKL	San Angelo, Tex.	1370	100-250
KCKN	Kansas City, Kans.	1310	100	KGKO	Wichita Falls, Tex.	570	250-1000
KCMC	Texarkana, Tex.	1420	100-250	KGKY	Scottsbluff, Nebr.	1500	100-250
KCMO	Kansas City, Mo.	1370	100	KGLO	Macomb, Ill.	1210	100-250
KCRC	Enid, Okla.	1360	250	KGLU	Safford, Ariz. (C.P.)	1420	100-250
KCRJ	Jerome, Ariz.	1310	100-250	KGMB	Honolulu, Hawaii	1320	1000
KDAL	Duluth, Minn.	1500	100	KGMC	Amarillo, Tex.	1410	1000-2500
KDD	Santa Barbara, Calif.	1500	100-250	KGND	North Platte, Nebr.	1430	1000
KDFN	Casper, Wyo.	1440	500	KGNO	Dodge City, Kans.	1340	250
KOKA	Pittsburgh, Pa.	990	50000	KGO	San Francisco, Calif.	790	7500
KDLR	Devils Lake, N. Dak.	1210	100	KGO	Honolulu, Hawaii	750	2500
KDNC	Lewistown, Mont. (C.P.)	1200	100-250	KGVL	Greenville, Tex. (C.P.)	1200	100
KDNT	Denton, Tex.	1420	100	KGVD	Missoula, Mont.	1260	1000
KDON	Monterey, Calif.	1210	100	KGW	Portland, Ore.	620	1000-5000
KDTH	Dubuque, Iowa (C.P.)	1340	500	KGY	Olympia, Wash.	1210	100
KDYI	Salt Lake City, Utah	1230	1000	KHBC	Hilo, Hawaii	1210	250
KCCA	Los Angeles, Calif.	1430	1000-5000	KHBC	Okmulgee, Okla.	1210	100
KEEN	Seattle, Wash.	1370	100	KHJ	Los Angeles, Calif.	900	1000-5000
KEHE	Los Angeles, Calif.	780	1000-5000	KHO	Spokane, Wash.	590	1000-5000
KELA	Centralia, Wash.	1440	500	KHSL	Chico, Calif.	1260	250
KELD	N. of Eldorado, Ark.	1370	100	KHUB	Watsonville, Calif.	1310	250
KELO	Sioux Falls, S. Dak.	1200	100	KICV	Clovis, N. Mex.	1370	100
KERN	Bakersfield, Calif.	1370	100	KID	Idaho Falls, Idaho	1320	500-1000
KEUB	Price, Utah	1420	100	KIDO	Boise, Idaho	1350	1000-2500
KEX	Portland, Ore.	1180	5000	KIDW	Lamar, Colo.	1420	100
KFAB	Lincoln, Nebr.	770	10000	KIEW	Eureka, Calif.	850	500-1000
KFAC	Los Angeles, Calif.	1300	1000	KIEY	Glendale, Calif.	850	250
KFAM	St. Cloud, Minn.	1420	100	KINY	Juneau, Alaska	1310	100
KFAR	Fairbank, Alaska (C.P.)	610	1000	KIRO	Seattle, Wash.	650	250
KFBB	Great Falls, Mont.	1280	1000-5000	KIT	Yakima, Wash.	1250	250-500
KFBI	Abilene, Kans.	1050	5000	KITE	Kansas City, Mo.	1530	1000
KFBK	Sacramento, Calif.	1490	5000	KIUL	Garden City, Kans.	1210	100
KFDW	Beaumont, Tex.	560	500-1000	KIUN	Pecos, Tex.	1420	100
KFDY	Brookings, S. Dak.	780	1000	KIUP	Durango, Colo.	370	100
KFEL	Denver, Colo.	920	500	KJBS	San Francisco, Calif.	1070	500
KFEO	St. Joseph, Mo.	680	2500	KJR	Seattle, Wash.	970	5000
KFGO	Boone, Iowa	1370	100	KLAH	Carlsbad, N. Mex.	1210	100
KFH	Wichita, Kans.	1300	1000-5000	KLBW	La Grande, Ore. (C.P.)	1420	100-250
KFI	Los Angeles, Calif.	640	50000	KLCN	Blytheville, Ark.	1290	100
KFIO	Spokane, Wash.	1120	100	KLO	Ogden, Utah	1400	500
KFIZ	Fond du Lac, Wisc.	1420	100	KLPW	Minot, N. Dak.	1240	250
KFJB	Marshalltown, Iowa	1200	100-250	KLRA	Little Rock, Ark.	1390	1000-5000
KFJI	Klamath Falls, Ore.	1210	100	KLS	Oakland, Calif.	1280	250
KFJM	Grand Forks, N. Dak.	1410	500-1000	KLUF	Galveston, Tex.	1370	100
KFJR	Portland, Ore.	1300	500	KLX	Oakland, Calif.	880	1000
KFJZ	Fort Worth, Tex.	1370	100-250	KLZ	Denver, Colo.	560	1000-5000
KFKA	Greeley, Colo.	880	500-1000	KMA	Shenandoah, Iowa	930	1000-5000
KFKU	Lawrence, Kans.	1220	1000-5000	KMAC	San Antonio, Tex.	1370	100-250
KFNF	Shenandoah, Iowa	890	500-1000	KMBC	Kansas City, Mo.	950	1000-5000
KFOR	Lincoln, Nebr.	1210	100-250	KMED	Medford, Ore.	1410	250
KFOX	Long Beach, Calif.	1310	100-250	KMJ	Fresno, Calif.	580	1000
KFPL	Dublin, Tex.	1210	100	KMLB	Monroe, La.	1200	100-250
KFPW	St. Smith, Ark.	890	1000-5000	KMJ	Clay Center, Nebr.	740	1000
KFPY	Spokane, Wash.	890	1000-5000	KMO	Tacoma, Wash.	1330	1000
KFOO	Anchorage, Alaska	780	250	KMOX	St. Louis, Mo.	1090	50000
KFRG	San Francisco, Calif.	610	1000-5000	KMPK	Beverly Hills, Calif.	710	500
KFRD	Longview, Tex.	1370	250	KMTR	Los Angeles, Calif.	570	1000
KFRU	Columbia, Mo.	630	500-1000	KNEL	Brady, Tex.	1500	250
KFSB	San Diego, Calif.	800	1000	KNET	Palestine, Tex.	1420	100
KFSG	Los Angeles, Calif.	1120	500-2500	KNOW	Austin, Tex.	1500	100
KFYD	Clayton, Mo.	1000	500-1000	KNX	Los Angeles, Calif.	1050	50000
KFYV	Los Angeles, Calif.	1210	100-250	KOA	Denver, Colo.	830	50000
KFVS	Cape Girardeau, Mo.	950	1000-5000	KOAC	Corvallis, Ore.	550	1000
KFWB	Hollywood, Calif.	1200	100-250	KOAM	Pittsburg, Kans.	790	1000
KFXD	Nampa, Idaho	1200	100-250	KOB	Albuquerque, N. Mex.	1180	10000
KFXJ	Grand Junction, Colo.	1200	100-250	KOBH	Rapid City, S. Dak.	1370	100-250
KFXM	San Bernardino, Calif.	1210	100	KOCA	Kilgore, Tex.	1210	100-250
KFUO	Clayton, Mo.	550	500	KOCY	Oklahoma City, Okla.	1310	100-250
KFYD	Lubbock, Tex.	1310	100-250	KOH	Reno, Nev.	1380	500
KFYR	Bismarck, N. Dak.	550	1000-5000	KOIH	Omaha, Nebr.	1260	1000-5000
KGA	Spokane, Wash.	1470	5000	KOIN	Portland, Ore.	940	1000-5000
KGAR	Tucson, Ariz.	1370	100-250	KOKO	La Junta, Colo.	1370	100
KGB	San Diego, Calif.	1330	1000	KOL	Seattle, Wash.	1270	1000-5000
KGBU	Ketchikan, Alaska	900	500	KOMA	Oklahoma City, Okla.	1480	5000
KGBX	Springfield, Mo.	1230	500	KOMO	Seattle, Wash.	920	1000-5000
KGCA	Decorah, Iowa	1270	100	KONO	San Antonio, Tex.	1370	100
KGCI	Coeur d'Alene, Idaho (CP)	1200	100	KOOS	Marshfield, Ore.	1200	100-250
KGCU	Mandan, N. Dak.	1240	250	KORE	Eugene, Ore.	1420	100
KGCX	Wolf Point, Mont.	1450	1000	KOTN	Pine Bluff, Ark.	1500	100
KGDE	Fergus Falls, Minn.	1200	100-250	KOVN	Valley City, N. Dak.	1500	100-250
KGDW	Stockton, Calif.	1100	1000	KOY	Phoenix, Ariz.	1390	1000
KGDY	Huron, S. Dak.	1340	250	KPAB	Laredo, Tex. (C.P.)	1500	100-250

NOTE: C. P. after station location, indicates construction permit has been issued.

Call Letters	Location	Frequency Power (K.C.) (Watts)	Call Letters	Location	Frequency Power (K.C.) (Watts)
KPAC	Port Arthur, Tex.	1260 500	KNOS	Jefferson City, Mo.	1310 100
KPBM	Poplar Bluffs, Mo. (C.P.)	1310 100	KWSC	Pullman, Wash.	1220 1000-5000
KPDN	Pampa, Tex.	1310 100	KWTN	Watertown, S. Dak.	1210 100
KPFA	Helena, Mont.	1210 100-250	KWTO	Springfield, Mo.	560 5000
KPLC	Lake Charles, La.	1500 100-250	KWYO	Sheridan, Wyo.	1370 100-250
KPLT	Paris, Tex.	1500 250	KXA	Seattle, Wash.	760 250-500
KPMC	Bakersfield, Calif.	1550 1000	KXL	Portland, Ore.	1420 100-250
KPO	San Francisco, Calif.	680 50000	KXO	El Centro, Calif.	1500 100
KPOF	Denver, Colo.	880 1000	KXOK	St. Louis, Mo. (C.P.)	1250 1000
KPPC	Pasadena, Calif.	1210 100	KXRO	Aberdeen, Wash.	1310 100-250
KPO	Wenatchee, Wash.	1500 100-250	KXYZ	Houston, Tex.	1440 1000
KPRC	Houston, Tex.	920 1000-5000	KYA	San Francisco, Calif.	1230 1000-5000
KQV	Pittsburgh, Pa.	1380 500	KYCA	Prescott, Ariz. (C.P.)	1500 100-250
KQW	San Jose, Calif.	1010 1000	KYOS	Merced, Calif.	1040 250
KRBA	Lufkin, Tex.	1310 100	KYSM	Mankato, Minn. (C.P.)	1500 100-250
KRBC	Abilene, Tex.	1420 100-250	KYW	Philadelphia, Pa.	1020 10000
KRBM	Bozeman, Mont. (C.P.)	1420 100-250	WAAB	Boatton, Mass.	1410 500-1000
KRE	Berkeley, Calif.	1370 100-250	WAAP	Chicago, Ill.	920 1000
KRGV	Weslaco, Tex.	1260 1000	WAAT	Jersey City, N. J.	940 500
KRIC	Beaumont, Tex. (C.P.)	1420 100-250	WAAB	Omaha, Nebr.	680 500
KRIS	Corpus Christi, Tex.	1330 500	WABC-		
KRKD	Los Angeles, Calif.	1120 500-2500	WB00	New York, N. Y.	880 50000
KRKO	Everett, Wash.	1370 50000	WAB	Bangor, Me.	1200 100-250
KRLC	Lewiston, Idaho	1390 250	WABY	Albany, N. Y.	1370 100-250
KRLD	Dallas, Tex.	1040 10000	WACO	Waco, Tex.	1420 100
KRLH	Midland, Tex.	1420 100	WADC	Tallmadge, Ohio	1320 1000-5000
KRMC	Jamestown, N. Dak.	1370 100-250	WAGA	Athens, Ga.	1450 500-1000
KRMD	Shreveport, La.	1310 100-250	WAGF	Dothan, Ala.	1370 250
KRNR	Roseburg, Ore.	1500 100-250	WAGM	Presque Isle, Me.	1420 100
KRNT	Des Moines, Iowa	1320 1000-5000	WAIM	Anderson, S. C.	1200 100
KROC	Rochester, Minn.	1310 100-250	WAIR	Winston-Salem, N. C.	1350 250
KROD	El Paso, Tex. (C.P.)	1500 100	WALA	Mobile, Ala.	1290 1000-1000
KRW	Oakland, Calif.	930 1000	WALB	Zanesville, Ohio.	1210 100
KRDY	Sacramento, Calif.	1210 100	WAML	Laurel, Miss.	1310 100-250
KPOA	Santa Fe, N. Mex.	1310 100	WAPI	Birmingham, Ala.	1140 5000
KRRV	Sherman, Tex.	1310 250	WAPO	Chattanooga, Tenn.	1420 100-250
KRSC	Seattle, Wash.	1120 250	WARD	Brooklyn, N. Y.	1400 500
KSAC	Manhattan, Kans.	580 500-1000	WASH	Grand Rapids, Mich.	1270 500
KSAL	Salina, Kans.	1500 100-250	WATL	Atlanta, Ga.	1370 100-250
KSAM	Huntsville, Tex. (C.P.)	1500 100	WATR	Waterbury, Conn.	1190 100
KSCJ	Sioux City, Iowa	1330 1000-5000	WAVE	Louisville, Ky.	940 1000
KSD	St. Louis, Mo.	650 1000-5000	WAWZ	Zarephath, N. J.	1350 500-1000
KSEI	Pocatello, Idaho	900 250-1000	WAYX	Waycross, Ga.	1200 100-250
KSFO	San Francisco, Calif.	580 1000-5000	WAZL	Hazleton, Pa.	1420 100
KSL	Salt Lake City, Utah	1130 50000	WBAA	West Lafayette, Ind.	890 500-1000
KSLM	Salem, Ore.	1370 100	WBAL	Baltimore, Md.	1060 10000
KSO	Des Moines, Iowa	1430 500-2500	WBAP	Fort Worth, Tex.	800 50000
KSOO	Sioux Falls, S. Dak.	1110 250	WBAX	Wilkes-Barre, Pa.	1210 100
KSRO	Santa Rosa, Calif.	1310 250	WBBC	Brooklyn, N. Y.	1400 500
KSTP	St. Paul, Minn.	1460 10000-25000	WBBL	Richmond, Va.	1210 100
KSUB	Cedar City, Utah	1310 100	WBDM	Chicago, Ill.	770 50000
KSUN	Lowell, Ariz.	1200 100-250	WBDR	Brooklyn, N. Y.	1300 1000
KTAR	Phoenix, Ariz.	620 1000	WBZ	Ponca City, Okla.	1200 100-250
KTAT	Fort Worth, Tex.	1240 1000	WBCH	Bay City, Mich.	1410 500-1000
KTBC	Austin, Tex. (C.P.)	1120 1000	WBEN	Buffalo, N. Y.	900 1000-5000
KTBS	Shreveport, La.	1450 1000	WBEO	Marquette, Mich.	1310 100
KTEM	Temple, Tex.	1370 250	WBHP	Huntsville, Ala.	1200 100
KTFI	Twin Falls, Idaho	1240 1000	WBIG	Greensboro, N.C.	1440 1000
KTHS	Hot Springs Natl. Pk. Ark.	1040 10000	WBIL	New York, N. Y.	1100 5000
KTNC	Viaalia, Calif.	1190 250	WBLL	Clarksburg, W. Va.	1370 100
KTWS	Santa Barbara, Cal.	1220 500	WBLY	Lima, Ohio	1210 100
KTKK	Oklahoma City, Okla.	1370 100	WBNO	New Orleans, La.	1200 100
KTRB	Modesto, Calif.	740 250	WBNS	Columbus, Ohio	1430 500-1000
KTRH	Houston, Tex.	1290 1000-5000	WBNY	New York, N. Y.	1350 1000
KTRI	Sioux City, Iowa (C.P.)	1420 100-250	WBNY	Buffalo, N. Y.	1370 100-250
KTSA	San Antonio, Tex.	650 1000-5000	WABC	(See WABC-WB00)	
KTSM	El Paso, Tex.	1310 100-250	WBOW	Terre Haute, Ind.	1310 100-250
KTUL	Tulsa, Okla.	1400 500-1000	WBRR	Red Bank, N. J.	1210 100
KTW	Seattle, Wash.	1220 1000	WBRC	Birmingham, Ala.	930 1000-5000
KUJ	Walla Walla, Wash.	1370 100	WBRE	Wilkes-Barre, Pa.	1310 100
KUMA	Yuma, Ariz.	1420 100	WBRR	Pittsfield, Mass.	1310 100-250
KUOA	Siloam Springs, Ark.	1280 5000	WBRY	Waterbury, Conn.	1530 1000
KUSD	Vermillion, S. Dak.	890 500	WBT	Charlotte, N. C.	1080 50000
KUTA	Salt Lake City, Utah (C.P.)	1500 100	WBTM	Danville, Va.	1370 100-250
KVCV	S. of Redding, Calif.	1200 100	WBZ	Boston, Mass.	990 50000
KVEC	San Luis Obispo, Calif.	1200 250	WBZA	Boston, Mass.	990 1000
KVGB	Great Bend, Kans.	1370 100	WCAD	Canton, N. Y.	1220 500
KVI	Tacoma, Wash.	570 1000-5000	WCAC	Pittsburgh, Pa.	1220 1000-5000
KVNU	Logan, Utah (C.P.)	1200 100	WCAL	Northfield, Minn.	1250 1000-2500
KVOA	Tucson, Ariz.	1260 1000	WCAM	Camden, N. J.	1280 500
KVOD	Denver, Colo.	920 500	WCAP	Baltimore, Md.	600 500-1000
KVOE	Santa Ana, Calif.	1500 100	WCAT	Asbury Park, N. J.	1200 500
KVOL	Lafayette, La.	1310 100	WCAT	Rapid City, S. Dak.	1200 100
KV00	Tulsa, Okla.	1140 25000	WCAU	Philadelphia, Pa.	1170 50000
KVOR	Colorado Springs, Colo.	1270 1000	WCAX	Burlington, Vt.	1200 100-250
KVOS	Bellingham, Wash.	1200 100	WCAX	Carthage, Ill.	1070 100
KVOX	Moorhead, Minn. (C.P.)	1310 100-250	WCBA	Allentown, Pa.	1440 500
KVRS	Rock Springs, Wyo. (C.P.)	1370 100-250	WCBD	Chicago, Ill.	1080 5000
KVSO	Ardmore, Okla.	1210 100-250	WCBM	Baltimore, Md.	1370 100-250
KWRG	Hutchinson, Kans.	1420 100	WCBS	Springfield, Ill.	1420 100-250
KWEH	Hobbs, N. Mex. (C.P.)	1500 100	WCCO	Minneapolis, Minn.	810 50000
KWG	Stockton, Calif.	1210 100	WCFB	Chicago, Ill.	970 5000
KWJB	Globe, Ariz. (C.P.)	1210 100-250	WCHS	Charleston, W. Va.	580 500-1000
KWJJ	Portland, Ore.	1360 500	WCHV	Charlottesville, Va.	1420 100-250
KWK	St. Louis, Mo.	1350 1000-5000	WCKY	Covington, Ky.	1490 10000
KWKH	Shreveport, La.	850 10000	WCLE	Cleveland, Ohio.	610 500
KWLC	Decorah, Iowa	1270 100	WCLO	Janesville, Wisc.	1200 100-250
KWLL	Longview, Wash.	780 250	WCLS	Joliet, Ill.	1310 100
KWNO	Winona, Minn.	1200 250	WCMI	Ashland, Ky.	1310 100-250
KWOC	Poplar Bluff, Mo.	1310 100	WCNW	Brooklyn, N. Y.	1500 100-250

NOTE: C. P. after station location, indicates construction permit has been issued.

Call Letters	Location	Frequency Power (K.C.) (Watts)	Call Letters	Location	Frequency Power (K.C.) (Watts)
WCOA	Pensacola, Fla.	1340 500-1000	WHBI	Newark, N. J.	1250 1000-2500
WCOC	Meridian, Miss.	880 500-1000	WHBL	Sheboygan, Wisc	1300 250
WCOL	Columbus, Ohio	1210 100	WHBO	Memphis, Tenn.	1370 100
WCOP	Boston, Mass.	1120 500	WHBU	Anderson, Ind.	1210 100-250
WCOU	Lewistown, Me. (C.P.)	1210 100	WHBY	Green Bay, Wisc	1200 100-250
WCOV	Montgomery, Ala. (C.P.)	1210 100	WHDF	Calumet, Mich.	1370 100-250
WCPO	Cincinnati, Ohio	1200 100-250	WHDH	Boston, Mass.	930 1000
WCRW	Chicago, Ill.	1210 100	WHDL	Olean, N. Y.	1400 250
WCSC	Charleston, S. C.	1380 500-1000	WHEB	Portsmouth, N.H.	740 250
WCSS	Portland, Me.	940 1000-2500	WHEC	Rochester, N.Y.	1430 500-1000
WDAE	Tampa, Fla.	1220 1000-5000	WHFF	Kosciusko, Miss.	1500 100-250
WDAF	Kansas City, Mo.	610 1000-5000	WHFC	Cicero, Ill.	1420 100-250
WDAH	El Paso, Tex.	1310 100-250	WHIO	Dayton, Ohio	1260 1000-5000
WDAS	Philadelphia, Pa.	1370 100-250	WHIP	Hammond, Ind.	1480 5000
WDAY	Fargo, N. Dak.	940 1000-5000	WHIS	Bluefield, W. Va.	1410 500-1000
WDBJ	Roanoke, Va.	930 1000-5000	WHJB	Greensburg, Pa.	620 250
WDBO	Orlando, Fla.	580 1000-5000	WHKC	Cleveland, Ohio	1390 1000-2500
WDEL	Wilmington, Del.	1120 250-500	WHKL	Columbus, Ohio	640 500
WDEV	Waterbury, Vt.	550 500	WHLB	Virginia, Minn.	1370 100-250
WDGY	Minneapolis, Minn.	1180 1000-5000*	WHLS	Port Huron, Mich. (CP)	1370 250
WDNC	Durham, N.C.	1500 100	WHNN	New York, N. Y.	1010 1000-5000
WDOD	Chattanooga, Tenn.	1120 1000-5000	WHO	Des Moines, Iowa	1000 50000
WDRC	Hartford, Conn.	1330 1000-5000	WHOM	Jersey City, N.J.	1450 250
WDSM	Superior, Wisc. (C.P.)	1200 100	WHP	Harrisburg, Pa.	1430 500-1000
WDSU	New Orleans, La.	1250 1000	WHIS	Madison, Wisc.	1280 1000-5000
WDWS	Champaign, Ill.	1370 100-250	WHBG	Glenside, Pa.	970 100
WDZ	Tuscola, Ill.	1020 250	WHBM	Jackson, Mich.	1370 100-250
WEAF	New York, N. Y.	680 50000	WHBU	Povnetto, Wisc.	1210 100-250
WEAN	Providence, R. I.	780 1000-5000	WHBW	Topeka, Kans.	580 1000-5000
WEAU	Eau Claire, Wisc.	1050 1000	WHBX	Utica, N. Y.	1200 100-250
WEBC	Duluth, Minn.	1290 1000-5000	WHCA	Ashtabula, Ohio	940 250
WEBO	Harrisburg, Ill.	1210 100-250	WHCC	Bridgeport, Conn	600 500-1000
WEBR	Buffalo, N. Y.	1310 100-250	WHL	St. Louis, Mo.	1200 100-250
WEDC	Chicago, Ill.	1210 100	WHLL	Urbana, Ill.	580 1000
WEED	Rocky Mount, N. C.	1420 100-250	WHLM	Wilmington, Del.	1420 100
WEEI	Boston, Mass.	590 1000-5000	WHND	Gary Ind.	560 1000-5000
WEEU	Reading, Pa.	830 1000	WHNS	New York, N. Y.	1180 1000
WELI	New Haven, Conn.	900 500	WHOD		
WELL	Battle Creek, Mich.	1420 100	WHBF	Miami, Fla.	610 1000
WEMP	Milwaukee, Wisc.	1310 100	WIP	Philadelphia, Pa.	610 1000
WENR	Chicago, Ill.	870 50000	WIRE	Indianapolis, Ind.	1400 1000-5000
WENY	Elmira, N.Y. (C.P.)	1200 250	WIS	Columbia, S.C.	580 1000-5000
WEQA	Evansville, Ind.	1370 100-250	WISN	Milwaukee, Wisc.	1120 250-1000
WESG	Elmira, N. Y.	1040 100	WJAC	Johnstown, Pa.	1310 100-250
WEST	Easton, Pa.	1200 100-250	WJAG	Norfolk, Nebr.	1060 1000
WEVD	New York, N. Y.	1300 1000	WJAR	Providence, R. I.	890 1000-5000
WEW	St. Louis, Mo.	760 1000	WJAS	Pittsburgh, Pa.	1290 1000-5000
WEXL	Royal Oak, Mich.	1310 50	WJAX	Jacksonville, Fla.	900 1000-5000
WFAA	Dallas, Tex.	800 50000	WJBC	Bloomington, Ill.	1200 100-250
WFAB	New York, N. Y.	300 1000	WJBK	Detroit, Mich.	1500 100-250
WFAM	South Bend, Ind.	1200 100	WJBL	Decatur, Ill.	1200 100
WFAS	White Plains, N. Y.	1210 100	WJBO	Baton Rouge, La.	1120 500
WFBC	Greenville, S.C.	1300 1000-5000	WJBW	New Orleans, La.	1200 100
WFBL	Altoona, Pa.	1310 100	WJBY	Gadsden, Ala.	1210 100-250
WFBM	Syracuse, N.Y.	1360 1000-5000	WJDX	Jackson, Miss.	1270 500-1000
WFBT	Indianapolis, Ind.	1230 1000-5000	WJEJ	Hagerstown, Md.	1210 50-100
WFBZ	Baltimore, Md.	1270 500-1000	WJHL	Johnson City, Tenn. (CP)	1200 100-250
WFDF	Flint, Mich.	1310 100	WJLM	Lansing, Mich.	1210 100-250
WFEA	Manchester, N.H.	1340 500-1000	WJJD	Chicago, Ill.	1130 20000
WFIL	Philadelphia, Pa.	560 500-1000	WJMC	Rice Lake, Wisc. (C.P.)	1210 250
WFLA	Tampa, Fla.	620 1000-5000	WJMS	Ironwood, Mich.	1420 100
WFMD	Frederick, Md.	900 500	WJNO	West Palm Beach, Fla.	1200 100-250
WFVJ	Youngstown, Ohio	1420 100	WJNR	Detroit, Mich.	750 50000
WFOR	Hattiesburg, Miss.	1370 100	WJRD	Tuscaloosa, Ala.	1200 100-250
WFOY	St. Augustine, Fla.	1210 100-250 ?	WJSV	Washington, O. C.	1460 10000
WFTC	Kinston, N. C.	1200 100-250	WJTN	Jamestown, N. Y.	1210 100-250
WGAL	Lancaster, Pa.	1500 100-250	WJW	Akron, Ohio.	1210 100-250
WGAN	Portland, Me. (C.P.)	640 500	WJZ	New York, N. Y.	760 50000
WGAR	Cleveland, Ohio	1450 500-1000	WKAO	San Juan, Puerto Rico	1240 1000
WGAU	Athens, Ga.	1310 100-250	WKAR	East Lansing, Mich.	850 1000
WGBB	Freeport, N. Y.	1210 100	WKAT	Miami Beach, Fla.	1500 100
WGBF	Evansville, Ind.	630 500-1000	WKBB	East Oubuque, Ill	1380 100-250
WGBI	Scranton, Pa.	880 500-1000	WKBH	La Crosse, Wisc.	1380 1000
WGCM	Mississippi City, Miss.	1210 100-250	WKBN	Youngstown, Ohio	670 500
WGES	Chicago, Ill.	1360 500-1000	WKBO	Harrisburg, Pa.	1200 100-250
WGH	Newport News, Va.	1310 100-250	WKBV	Richmond, Ind.	1500 100
WGIL	Galesburg, Ill. (C.P.)	1500 250	WKBW	Buffalo, N.Y.	1480 5000
WGKV	Charleston, W.Va. (C.P.)	1500 100	WKBZ	Muskegon, Mich.	1500 100-250
WGL	Ft. Wayne, Ind.	1370 100	WKEU	Griffin, Ga.	1500 100
WGN	Chicago, Ill.	720 50000	WKOK	Sunbury, Pa.	1210 100
WGNV	Newburgh, N. Y.	1210 100	WKRC	Cincinnati, Ohio	550 1000-5000
WGPC	Albany, Ga.	1420 100	WKST	New Castle, Pa. (C.P.)	1250 250
WGR	Buffalo, N. Y.	550 1000-5000	WKY	Oklahoma City, Okla.	900 1000-5000
WGRC	New Albany, Ind	1370 250	WKZO	Kalamazoo, Mich.	590 1000
WGRM	Grenada, Miss.	1210 100	WLAK	Nashville, Tenn.	1470 5000
WGST	Atlanta, Ga.	890 1000-5000	WLAL	Lakeland, Fla.	1310 100
WGTM	Wilson, N. C.	1310 100	WLAP	Lexington, Ky.	1420 100-250
WGVA	Indianapolis, Ind. (CP)	1080 1000	WLAW	Lawrence, Mass.	680 1000
WGY	Schenectady, N. Y.	790 50000	WLB	Minneapolis, Minn	1250 1000
WHA	Madison, Wisc.	940 5000	WLBZ	Muncie, Ind.	1310 100-250
WHAI	Greenfield, Mass.	1210 250	WLBZ	Stevens Point, Wisc	900 5000
WHAL	Saginaw, Mich. (C.P.)	950 500	WLBZ	Bangor, Me.	620 500-1000
WHAM	Rochester, N. Y.	1150 50000	WLEU	Erie, Pa.	1420 100-250
WHAS	Louisville, Ky.	820 50000	WLLH	Lowell, Mass.	1370 100-250
WHAT	Philadelphia, Pa.	1310 100	WLMU	Middleboro, Ky. (C.P.)	1210 100-250
WHAZ	Troy, N. Y.	1300 1000	WLNH	Laconia, N.H.	1310 100
WHB	Kansas City, Mo.	960 1000	WLS	Chillicothe, Ill.	870 50000
WHBB	Selma, Ala.	1500 100	WLTH	Brooklyn, N.Y.	1400 500
WHBC	Canton, Ohio	1200 100	WLVA	Lynchburg, Va.	1200 100-250
WHBF	Rock Island, Ill.	1210 100-250	WLW	Cincinnati, Ohio	700 50000

NOTE: C. P. after station location, indicates construction permit has been issued.

Call Letters	Location	Frequency Power (K.C.) (Watts)		Call Letters	Location	Frequency Power (K.C.) (Watts)	
WMAL	Washington, D.C.	630	250-500	WSAR	Fall River, Mass.	1450	1000
WMAQ	Chicago, Ill.	670	50000	WSAU	Wausau, Wisc.	1370	100
WMAS	Springfield, Mass.	1420	100-250	WSAV	Savannah, Ga.	1310	100
WMZ	Macon, Ga.	1180	1000	WSAY	Rochester, N.Y.	1210	100
WMBC	Detroit, Mich.	1420	100-250	WSAZ	Huntington, W.Va.	1190	1000
WVBD	Peoria, Ill.	1440	1000-5000	WSB	Atlanta, Ga.	740	50000
WMBF-WIOD	(See WIOD-WMBF)			WSBC	Chicago, Ill.	1210	100-250
WMBG	Richmond, Va.	1350	500	WSBT	South Bend, Ind.	1360	500
WMBH	Joplin, Mo.	1420	100-250	WSFA	Montgomery, Ala.	1410	500-1000
WMBI	Chicago, Ill.	1080	5000	WSGN	Birmingham, Ala.	1310	100-250
WMBR	Auburn, N.Y.	1310	100	WSIX	Nashville, Tenn.	1210	100-250
WMBR	Jacksonville, Fla.	1370	100-250	WSJS	Winston-Salem, N.C.	1310	100
WMBT	Uniontown, Pa.	1420	250	WSLI	Jackson, Miss. (C.P.)	1420	100-250
WMC	Memphis, Tenn.	780	1000-5000	WSM	Nashville, Tenn.	650	50000
WMCA	New York, N.Y.	570	1000	WSMB	New Orleans, La.	1320	1000
WMEX	Boston, Mass.	1500	100-250	WSMK	Dayton, Ohio	1380	200
WMFO	Wilmington, N.C.	1370	100	WSNJ	Bridgeton, N.J.	1210	100
WMFF	Plattsburg, N.Y.	1310	100-250	WSOC	Charlotte, N.C.	1210	100-250
WMFG	Hibbing, Minn.	1210	100-250	WSPA	Spartanburg, S.C.	920	1000
WMFJ	Daytona Beach, Fla.	1420	100	WSTP	Toledo, Ohio	1340	1000-5000
WMFO	Decatur, Ala.	1370	100	WSPR	Springfield, Mass.	1140	500
WMFR	High Point, N.C.	1200	100	WSTP	Salisbury, N.C. (C.P.)	1500	100-250
WMIN	St. Paul, Minn.	1370	100-250	WSUI	Iowa City, Iowa	880	500-1000
WMNN	Fairmont, W. Va.	890	500-1000	WSUN	St. Petersburg, Fla.	650	1000-5000
WMPC	Lapeer, Mich.	1200	100-250	WSVA	Harrisonburg, Va.	1370	50
WMPS	Memphis, Tenn.	1430	500-1000	WSVS	Buffalo, N.Y.	1500	100
WMSD	Sheffield, Ala.	1420	100	WSYB	Rutland, Vt.	570	1000
WMT	Cedar Rapids, Iowa	600	1000-5000	WSYB-WSUY	Syracuse, N.Y.	900	1000
WMAC	Boston, Mass.	1230	1000-5000	WTAD	Quincy, Ill.	580	1000
WMAD	Norman, Okla.	1010	1000	WTAG	Worcester, Mass.	1310	100-250
WMAX	Yankton, S. Dak.	570	1000-5000	WTAL	Tallahassee, Fla.	1070	50000
WMBC	New Britain, Conn.	1380	250	WTAM	Cleveland, Ohio	1330	1000
WMBF	Binghamton, N.Y.	1500	100-250	WTAR	Green Bay, Wisc.	780	1000
WMBH	New Bedford, Mass.	1310	100-250	WTAN	Norfolk, Va.	1120	500
WMBX	Springfield, Vt.	1260	1000	WTAX	College Station, Tex.	1210	100
WMBZ	Saranac Lake, N.Y.	1290	100	WTBO	Springfield, Ill.	800	250
WMEL	San Juan, Puerto Rico	1290	1000-2500	WTCT	Cumberland, Md.	1250	1000-5000
WNEW	New York, N.Y.	1250	1000-2500	WTEL	Minneapolis, Minn.	1310	100
WNLC	New London, Conn.	1500	100	WTHF	Philadelphia, Pa.	1200	100
WNXX	Knoxville, Tenn.	1010	1000-5000	WTHF	Hartford, Conn.	1060	50000
WNYC	New York, N.Y.	810	1000	WTJS	Hartford, Conn.	1310	100-250
WQAI	San Antonio, Tex.	1190	50000	WTWJ	Jackson, Tenn.	620	1000-5000
WOC	Davenport, Iowa	1370	100-250	WTWJ	Milwaukee, Wisc.	1500	100-250
WOCB	Barnstable Twp., Mass.	(C.P.)	1210	WTWV	E. St. Louis, Ill.	1280	500
WOI	Ames, Iowa	640	5000	WTNJ	Trenton, N.J.	1260	1000
WOKO	Albany, N.Y.	1430	500-1000	WTOC	Savannah, Ga.	1200	100
WOL	Washington, D.C.	1310	100	WTOL	Toledo, Ohio	1310	100-250
WOLS	Florence, S.C.	1200	100	WTRC	Elkhart, Ind.	1400	500
WOVI	Owensboro, Ky.	1500	100-250	WWFW	Brooklyn, N.Y.	1200	100
WOMT	Manitowoc, Wisc.	1210	100	WWJA	Hammond, Ind.	920	1000-5000
WOOD	Grand Rapids, Mich.	1270	500	WWJ	Detroit, Mich.	850	10000
WOPI	Bristol, Tenn.	1500	100	WWNC	New Orleans, La.	570	1000
WOR	Newark, N.J.	710	50000	WWRL	Asheville, N.C.	1500	100-250
WORC	Worcester, Mass.	1280	500	WWSW	Pittsboro, N.C.	1500	100-250
WORK	York, Pa.	1320	1000	WVVA	Wheeling, W.Va.	1160	5000
WURL	Boston, Mass.	920	500	WXYZ	Detroit, Mich.	1240	1000
WOSU	Columbus, Ohio	570	750-1000				
WOV	New York, N.Y.	1130	1000				
WOW	Omaha, Nebr.	590	1000-5000				
WOWO	St. Wayne, Ind.	1160	10000				
WPAD	Paducah, Ky.	1420	100-250				
WPAP	Parkersburg, W. Va.	1420	100				
WPAX	Thomasville, Ga.	1210	100				
WPAY	Portsmouth, Ohio	1370	100				
WPEN	Philadelphia, Pa.	920	250-500				
WPS	Atlantic City, N.J.	1100	5000				
WPIC	Sharon, Pa. (C.P.)	780	250				
WPRA	Mayaguez, Puerto Rico	1370	100-250				
WPRO	Providence, R.I.	630	500-1000				
WPTF	Ponce, Puerto Rico	1420	100-250				
WPTF	Raleigh, N.C.	680	5000				
WQAM	Miami, Fla.	560	1000				
WQAN	Scranton, Pa.	880	500-1000				
WQBC	Vicksburg, Miss.	1360	1000				
WQDM	St. Albans, Vt.	1390	1000				
WQXR	New York, N.Y.	1550	1000				
WRAK	Williamsport, Pa.	1370	100-250				
WRAL	Raleigh, N.C. (C.P.)	1210	100-250				
WRAW	Reading, Pa.	1310	100				
WRAX	Philadelphia, Pa.	920	250-500				
WRBL	Columbus, Ga.	1200	100-250				
WRC	Washington, D.C.	350	500-1000				
WRDO	Augusta, Me.	1370	100				
WRDW	Augusta, Ga.	1500	100-250				
WREC	Memphis, Tenn.	600	1000-5000				
WREN	Lawrence, Kans.	1220	1000-5000				
WRGA	Rome, Ga.	1500	100-250				
WRJN	Racine, Wisc.	1370	100-250				
WRNL	Richmond, Va.	880	500				
WROK	Rockford, Ill.	1410	500-1000				
WROL	Knoxville, Tenn.	1310	100-250				
WRR	Dallas, Tex.	1280	500				
WRTD	Richmond, Va.	1500	100				
WRUF	Gainesville, Fla.	830	5000				
WRVA	Richmond, Va.	1110	5000				
WSAI	Cincinnati, Ohio	1330	1000-5000				
WSAJ	Grove City, Pa.	1310	100				
WSAL	Salisbury, Md.	1200	250				
WSAN	Allentown, Pa.	1440	500				

NOTE: C. P. after station location, indicates construction permit has been issued.

CANADIAN BROADCAST STATIONS			
CBF	Montreal, Que.	910	50000
CBL	Toronto, Ont.	840	50000
CBM	Lafayette, Que.	1090	5000
CBO	Winnipeg, Man.	880	1000
CBW	Lulu Island, B.C.	1100	5000
CFAC	Calgary, Alta.	890	1000
CFAR	Edmonton, Alta.	1370	100
CFCA	Winnipeg, Man.	800	500
CFCH	North Bay, Ont.	930	100
CFCL	Strathmore, Alta.	1030	1000
CFCT	Edmonton, Alta.	630	100
CFCT	Edmonton District, B.C.	1450	500
CFCK	Montreal, Que.	6005	75
CFCL	Charlottetown, P.E.I.	650	1000
CFGP	Grande Prairie, Alta.	1200	100
CFJC	North Kamloops, B.C.	880	1000
CFJC	Prescott, Ont.	930	100
CFNB	Fredericton, N.B.	550	500-1000
CFPL	London, Ont.	730	100
CFPR	Prince Rupert, B.C.	540	50
CFQC	Saskatoon, Sask.	840	1000
CFRR	Winnipeg, Man.	690	1000
CFRC	Kingston, Ont.	1510	100
CFRN	Edmonton, Alta.	960	100
CFRP	King, Ont.	6030	100
CFRP	Strathmore, Alta.	670	100
CHAB	Moose Jaw, Sask.	1200	100-250
CHCK	Charlottetown, P.E.I.	1310	50
CHGS	Summerside, P.E.I.	1050	50
CHLN	Three Rivers, P.Q.	1420	100
CHLP	Montreal, Que.	1120	100
CHLT	Sherbrooke, Que.	1210	100
CHML	Saltfleet, Ont.	1030	100
CHNC	New Carlisle, Que.	960	1000
CHNS	Bedford, N.S.	930	100
CHNX	Bedford, N.S.	640	500
CHRC	Quebec, P.Q.	560	100
CHSJ	St. John, N.B.	1120	100
CHWK	Chilliwack, B.C.	780	100
CJAT	Trail, B.C.	910	1000
CJBR	Sacre-Coeur, P.Q.	1030	100
CJCA	Belmont View, Alta.	720	1000
CJCB	Sydney, N.S.	1240	1000
CJCL	Calgary, Alta.	880	100
CJCS	Stratford, Ont.	1210	50
CJCU	Akiavik, N.W.T.	1210	50
CJCY	Sydney, N.S.	6810	1000
CJGX	Yorkton, Sask.	1390	100
CJIC	Sault Ste. Marie, Ont.	1500	100
CJJK	Kirkland Lake, Ont.	1310	100
CJLS	Yarmouth, N.S.	1100	100
CJOC	Lethbridge, Alta.	960	100
CJOR	Sea Island, B.C.	600	800
CJRC	Midland, Ont.	630	1000

THE CURTAIN RISES

BROADCASTING is now an acknowledged branch of drama and the leading names of the stage and screen are attracted by its many opportunities as well as the fat salaries that go with appearance on a sponsored show. Radio drama is divided in two classes: Original and adapted plays are in one branch, and serial and sketch programs are in the second. As far as air audiences go, such names as Amos 'n' Andy and Myrt and Marge, made popular on the air, are just as much an attraction as the marquee names radio recruits from the footlights and kleiglits.



Edward G. Robinson and Claire Trevor, co-stars of the popular CBS serial "Big Town" are in the ranks of "regular" air performers, differing from most other big movie names who just appear on guest spots.



James Cagney and Noel Coward are caught by the studio candid cameraman. Circle: Irene Rich, who, in several seasons on the air, scored as favorably with listeners as she did with theatre and movie audiences.



Left to Right: Cecil B. De Mille, the movie director who added microphone triumphs to his megaphone hits as producer of the CBS "Radio Theatre" programs; Wallace Beery, an occasional guest star, and Jean Hersholt, portrayer of "Dr. Christian" in the radio series of that name.



The theatre's "royal family" is in constant air demand. Left to right: Lionel, Ethel and John Barrymore.



How a radio play takes the air is demonstrated by these four views from NBC's "Spy at Large" series. Upper left: The first script reading. Lines are ironed out and the cast learns story. Upper right: Director Joseph Bell gives some pointers to actresses Consuelo Lembke, Eileen Burns and Elena Karan. Lower left: The dress rehearsal with Miss Burns, Eric Dressler and Miss Lembke going through their paces. Lower right: On the air! Miss Lembke is shown reading the opening lines.



Two popular series of long standing are pictured above. Left: Four members of the cast of "One's Man's Family" which has been a radio hit since 1932. Photo shows Minetta Ellen (Fanny Barbour) with Bernice Berwin (Hazel) at left; Kathleen Wilson (Claudia) at right, and Winifred Wolfe (Teddy) below. Right: The popular team of Lum and Abner in make-up. Chet Lauck plays Lum and Norris Goff portrays Abner.



Amos 'n' Andy are shown with the only woman—and only third person—in their cast, Madaline Lee. The pair, Charles Correll (Amos) and Freeman Gosden (Andy) enact all the other characters themselves. Right: Myrt and Marge. (Myrtle Vail and Donna Damerel).



ON WITH THE DANCE!

WHETHER personal preferences go to "swing" or "sweet" music, dance music is a "must" on most listeners' tuning schedules. There are scores of headlining bands and space permits only some of the representative ones to be pictured on these two pages. Most dance bands attempt to establish an individual style to be distinctive and the demand for special arrangements of popular tunes keeps the arrangers working day and night. Many bands have stellar vocalists and instrumental soloists to enhance their offerings.



Fred Waring, head of the Pennsylvanians, a pioneer radio band. Choral offerings are his dish. Right: They don't usually call him the "king of jazz" any more but there's no doubt that he's still its master — Paul Whiteman.



Phil Spitalny and his All-Girl Orchestra, a radio act that's in great demand for stage appearances. Right: Raymond Paige. Below, left: Guy Lombardo (seated) and his versatile brothers, Leibert, Carmen and Victor. Below, right: B. A. Rolfe, radio old-timer who's still a radio big-timer.





Vincent Lopez, Peter Van Steeden and Robert Armbruster, three ace baton-wavers.



The Dorsey Brothers used to jointly conduct their own orchestra under that name but now they have separate aggregations—both highly successful. Jimmy Dorsey is at the left and Brother Tommy at the right.



Al Goodman, George Olsen and Joe Rines, all stellar bandsmen.



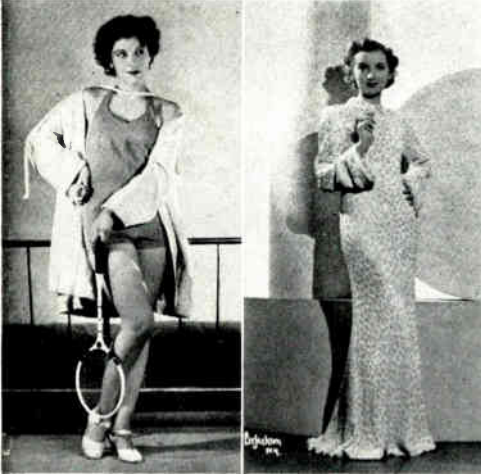
Left to Right: Horace Heidt, conductor of the Brigadiers, Gene Krupa, the drummer, who left Benny Goodman to head his own band, and Richard Himber, a consistent broadcaster.

BEAUTY AND THE MIKE

RADIO vies with the stage and screen in the beauty of its female stars. In the long run, radio even goes the other entertainment mediums one better; the microphone drafts the "best-lookers" as well as the best talent from the stage and cinema. And the high standard of mike beauty has brought about many screen offers for the broadcasting damsels. With television in the offing, you will soon enjoy hearing as well as seeing these decorative persons.



Elaine Bassett, an NBC dramatic performer. Left: Betty Lou Gerson, NBC actress and Alice Frost, heard on both CBS and NBC in leading dramatic roles.



Left to right: Olga Andre, NBC songstress frequently featured on shortwave programs because of her ability as a linguist; Virginia Verrill, vocalist presented on both networks and the Lane Sisters—Priscilla and Rosemary, whose air work brought about a Hollywood cinema career. Below, left to right: Wendy Barrie, who reversed the Lane Sisters formula by coming to the air from the screen; Maxine, vocalist with Phil Spitalny's All-Girl Orchestra, and Bess Johnson who plays a featured role in the CBS series "Hilltop House."





Ruth Warrick (right), CBS actress, shows the photographer her idea of keeping cool during a broadcast.



Betty Caine and Helen Walpole, NBC actresses, who are undoubtedly adept on figures of speech.



Gale Page, NBC singer and actress, who also used the mike as a short-cut to Hollywood fame. Right: Templeton Fox, NBC actress.



The mirror-lid of this television receiver reflects a picture measuring 12 by 14 inches off a vertically-mounted cathode-ray tube. This set was introduced to the Berlin market and is similar in many respects to models developed in American laboratories.



No, this is not a Hollywood movie set. It is a typical European television studio. Left: This photograph reveals the excellent detail of a projection television image on a theatre-size screen ten feet high and twelve feet wide.



Preparations are under way for the introduction of public-participating television in many American cities. Gilbert Seldes and Peter C. Goldmark, respectively television program director and television engineer of the Columbia Broadcasting System, are seen at the left at the scanning panel of the network's New York video station. In the center photo they are inspecting one of ten giant transformers for the new Chrysler Building sight-and-sound station. A Columbia television studio setting of many years ago is shown at the right. The image was virtually confined to "head and shoulders" in those days. Today, however, the television camera can pick up wide-angle scenes in the manner of a movie camera.

TELEVISION BROADCAST STATIONS

LICENSEE AND LOCATION	CALL LETTERS	FREQUENCY (kc) OR GROUP*	POWER		EMISSION
			VISUAL	AURAL	
Columbia Broadcasting System, Inc., New York, N. Y.	W2XAX	B, C	50w C. P. 7500w	7500w	A4 A3
Don Lee Broadcasting System, Los Angeles Calif.	W6XAO	B, C	150w C. P. 1kw	150w	A3, A4
Farnsworth Television Incorporated of Pa., Springfield, Pa.	W3XPF	B, C	4kw	1kw	A3, A4 (C. P. only)
First National Television, Inc., Kansas City, Mo.	W9XAL	B, C	300w	150w	A3, A4
General Television Corporation, Boston, Mass.	W1XC	B, C	500w		A4
The Journal Company, Milwaukee, Wisconsin.	W9XD	B, C	500w		A4
Kansas State College of Agriculture & Applied Science, Manhattan, Kansas.	W9XAK	A	125w	125w	A3, A4 & Special
National Broadcasting Co., Inc., New York, N. Y.	W2XBS	B, C	12kw	15kw	A3, A4
National Broadcasting Co., Inc., Portable (Camden, N. J. & New York, N. Y.)	W2XBT	D(92,000 & 175000-180000)	400w	100w	A1, A2, A3, A4 & Special (C. P. only)
Philco Radio & Television Corp., Philadelphia, Pa.	W3XE	B, C	10kw	10kw	A3, A4
Philco Radio & Television Corp., Philadelphia, Pa.	W3XP	D(204000-210000)	15w		A4 & Special (C. P. only)
Purdue University, West Lafayette, Ind.	W9XC	A	1500w		A4
Radio Pictures, Inc., Long Island City, N. Y.	W2XDR	B, C	1kw	500w	A3, A4
RCA Manufacturing Co., Inc., Portable (Bldg. No. 8 of Camden Plant)	W3XAD	D(124000 to 130000)	500w	500w	A3, A4
RCA Manufacturing Co., Inc., Camden, N. J.	W3XEP	B, C	30kw	30kw	A3, A4
RCA Manufacturing Co., Inc., Portable-Mobile	W10XX	B, C	50w	50w	A3, A4
The Sparks-Witbington Company, Jackson, Michigan.	W8XAN	B, C	100w	100w	A3, A4
University of Iowa, Iowa City, Iowa.	W9XK	A	100w		A4
University of Iowa, Iowa City, Iowa.	W9XUI	B, C	100w		A4
Dr. George W. Young, Minneapolis, Minnesota	W9XAT	B, C	500w		A4

*FREQUENCY GROUPS

Group A	Group B	Group C	Group D
2000 to 2100 kc	42,000 to 56,000 kc	60,000 to 86,000 kc	Any 6,000 kc frequency band above 110,000 kc excluding 400,000 to 401,000 kc.

THE SERIOUS SIDE OF RADIO MUSIC

IN this age of swing music and such dances as the Big Apple, Lambeth Walk and Yam, radio renditions are by no means confined to jitterbugs' tastes. The serious side of music is not neglected. The best symphony concerts, operas and instrumental and vocal solo bits are offered on radio schedules. Sponsors and networks spare no expense to obtain the best names in the music world.



Lily Pons, the world-famed coloratura, and her noted conductor-husband, Andre Kostelanetz.



There's beauty on the classical programs, too, as these views of Gladys Swarthout and Grace Moore adequately prove.



Arturo Toscanini, acclaimed by many experts as the greatest symphonic conductor of all time. As chief conductor of the NBC Symphony Orchestra, he has contributed greatly towards the advance of broadcast entertainment. An NBC photographer took these candid shots of Toscanini in action.



Three popular singers of classics—Lawrence Tibbett, Margaret Speaks and Walter Cassell.



Judging by the smiles of these three stars, serious music has its bright side. Left to right: Howard Barlow, CBS conductor; Vivian Della Chiesa, NBC lyric soprano, and Erno Rapee, NBC conductor.



Mario Cozzi, NBC baritone. Left: Pierre French, conductor, who scored favorably with American listeners. Right: Frank Black, NBC conductor.



WORLD-WIDE SHORT-WAVE STATION LIST

Kc. Meters Call	Location	Kw.	Service, etc.	Kc. Meters Call	Location	Kw.	Service, etc.
400.000 0.75 W1XKG	Storrs, Conn.	0.5	Experimental	15,620 10.21 JVF	Nasuki, Japan	20.0	Phone to KWU; occ. ba.
400.500 4.96 W8XKA	Pittsburgh, Pa.	0.15	Experimental	15,500 10.35 CMAS	Havana, Cuba	Tests, irr.
433.000 4.31 W2XG	Pittsburgh, Pa.	0.15	Exp.; relays KDKA	15,400 10.37 KEM	Belima, Calif.	40.0	Phone
41.000 0.50 W1XKA	New York, N. Y.	0.1	Experimental	18,475 10.59 KKL	Belima, Calif.	40.0	Phone
31.800 9.49 W3XKA	Chesapeake Falls, N. Y.	0.8	Exp.; relays WJZ	15,450 10.43 UUG	Addis Ababa, Ethiopia	Phone
31.800 9.49 W3XKA	Philadelphia, Pa.	Exp.; relays KYW	15,420 10.45 XEEM	Mazatlan, Mexico	Be.; relays XEHL
31.800 9.49 W3XKA	Rochester, N. Y.	0.1	Exp.; relays WHAM	15,420 10.45 KWO	Dibon, Calif.	20.0	Phone to Hawaii, Manila
31.800 9.49 W3XKA	Pittsburgh, Pa.	Experimental	15,370 10.53 HAM	Bohemia, Hungary	20.0	Broadcast
31.800 9.49 W3XWJ	Detroit, Mich.	Exp.; relays WWJ	15,360 10.53 DZC	Zeeun, Germany	Phone
31.800 9.49 W3XPD	St. Louis, Mo.	0.1	Exp.; relays KSD	15,360 10.54 KWO	Dibon, Calif.	20.0	Phone to Hawaii
26.100 11.49 GSK	Davenport, England	20.0	Broadcast	15,340 10.56 DJR	Zeeun, Germany	50.0	Broadcast
21.440 13.93 W3XK	Pittsburgh, Pa.	40.0	Be.; relays KDKA	15,340 10.57 W3XAD	Saksobodny, N. Y.	20.0	Be.; relays WGY
21.450 13.93 GSI	Davenport, England	15.0	Broadcast	15,330 10.58 ULRB	Podbrady, Czechoslovakia	20.0	Broadcast
24.920 12.94 W2XE	Wayne, N. J.	Be.; relays WABC	15,210 10.60 GSP	Daventry, England	20.0	Broadcast
21.520 13.04 JZM	Nasuki, Japan	15,300 10.60 CP7	La Paz, Bolivia	1.0	Phone
21,478 13.97 GSK	Davenport, England	20.0	Broadcast	15,290 10.63 DJR	Zeeun, Germany	3-50	Broadcast
21,480 13.98 W3XAL	Davenport, England	40.0	Broadcast	15,290 10.63 LRV	Buenos Aires, Argentina	3-50	Be.; relays LR1
21,480 13.98 OLROA	Podbrady, Czechoslovakia	20.0	Broadcast	15,230 10.65 W3XE	Wayne, N. J.	15.0	Be.; relays WABC
21,420 14.01 WKK	Lawrenceville, N. J.	20.0	Phone	15,200 10.66 GEL	Daventry, England	15.0	Broadcast
21,190 14.15 LSLA	Hurlingham, Argentina	60.0	Phone to London and Rio;	15,200 10.67 W3XAL	Boston, Mass.	3.0	Broadcast
			day	15,140 10.68 TFSJ	Podbrady, Czechoslovakia	20.0	Broadcast
21,140 14.19 KBI	Manila, P. I.	10.0	Phone	15,120 10.70 ULRB	Podbrady, Czechoslovakia	20.0	Broadcast
21,080 14.23 PBA	Marapian, Brazil	10.0	Phone; broadcast	15,120 10.71 PCJ	Habon, Holland	20.0	Experimental
21,040 14.28 WKA	Lawrenceville, N. J.	20.0	Phone to England	15,120 10.72 W3XK	Pittsburgh, Pa.	40.0	Be.; relays KDKA
21,040 14.31 WKA	Dixon, Calif.	20.0	Phone to Calif.	15,100 10.73 DJR	Zeeun, Germany	50.0	Broadcast
21,020 14.32 LONB	Hurlingham, Argentina	60.0	Phone to New York; day	15,100 10.75 W3XE	Hongkong, China	2.0	Broadcast
20,910 14.35 PSB	Marapian, Brazil	10.0	Phone	15,100 10.76 GEM	Daventry, England	15.0	Broadcast
20,940 14.37 LBY	Madrid, Spain	7.5	Phone to Buenos Aires	15,100 10.77 JMB	Nasuki, Japan	Broadcast
20,820 14.41 KSS	Bolinas, Calif.	5.0	Phone to Calif.	15,100 10.80 OLRC	Podbrady, Czechoslovakia	20.0	Broadcast
20,780 14.44 KMM	Bolinas, Calif.	40.0	Phone	15,100 10.80 GEM	Buenos Aires, Argentina	15.0	Broadcast
20,140 14.90 DWQ	Nauen, Germany	Phone	15,040 10.84 GEF	Daventry, England	16.0	Broadcast
20,040 14.97 OPL	Leopoldville, Belgian Congo	9.0	Phone to ORG; mornings	15,120 10.84 WJY	Valencia City	10.0	Broadcast
20,020 14.99 DFE	Nauen, Germany	Phone to South America	15,110 10.85 DSE	Zeeun, Germany	3-50	Broadcast
19,180 15.47 KAL	Nasuki, P. I.	Phone to Calif.	15,070 10.91 PSM	Podbrady, Czechoslovakia	20.0	Broadcast
18,820 15.71 WKN	Lawrenceville, N. J.	20.0	Phone to England	15,040 10.98 WNC	Hindun, Florida	0.4	Phone
19,720 15.21 EAO	Madrid, Spain	10.0	Phone to Latin America	15,040 10.95 RLI	Moscow, U.S.S.R.	20.0	Phone to WQW; mornings
18,780 15.28 DPJ	Nauen, Germany	Phone	15,000 20.0 WMY	Baltimore, Md.	1.0	Phone; standard; Tue. Wed.
18,610 15.20 SVY	Absheal, Egypt	8.1	Phone				Phone; 2-3 p.m. E. S. T.
18,490 15.31 LSF	Monte Grande, Argentina	7.0	Phone	14,985	San Salvador, El Salvador	Phones Mexican stations
18,520 15.37 IRW	Rome, Italy	20.0	Phone to South America	14,980 20.00 KAY	Manila, P. I.	40.0	Phone to Dixon
19,480 15.44 DPM	Nauen, Germany	Phone	14,970 20.04 LIA	Sofia, Bulgaria	Broadcast
19,340 15.51 PMJ	Bandoeng, Java, D. E. I.	Phone sometimes bc.	14,960 20.06 TSL	San Salvador, El Salvador	Phone
19,260 15.58 PPU	Sepetiba, Brazil	12.0	Phone	14,935 20.09 JVE	Manaus, Brazil	Phone; broadcast
19,120 15.61 WKF	Lawrenceville, N. J.	20.0	Phone	14,910 20.12 PPK	Nasuki, Japan	10.0	Phone to Formosa; broad-
18,700 15.47 ORG	Ruysselsde, Belgium	8.0	Phone				cast
19,140 15.66 LSLA1	Hurlingham, Argentina	60.0	Phone to Madrid, Berlin;	14,620 20.42 PSF	Mampigu, Brazil	Phone; broadcast
			Paris; day	14,600 20.55 JVB	Nasuki, Japan	20.0	Phone; broadcast
19,050 15.75 JVC	Nasuki, Japan	Phone; sometimes bc.	14,590 20.54 W3N	Lawrenceville, N. J.	20.0	Phone
19,020 15.77 HSPJ	Pasehek, Japan	Broadcast	14,585 20.64 HBJ	Prague, Switzerland	20.0	Phone
18,810 15.85 JVA	Nasuki, Japan	Phone to Europe; occ. bc.	14,530 20.65 LSN1	Hurlingham, Argentina	60.0	Phone to New York; morn-
18,890 15.88 ZSS	Klippeval, S. Africa	5.0	Phone to Rugby				even.
18,860 15.91 WKM	Rocky Point, N. Y.	40.0	Phone	14,500 20.69 L3M2	Hurlingham, Argentina	60.0	Phone to Madrid, Berlin;
18,830 15.93 LPL	Bandoeng, Java, D. E. I.	40.0	Phone to Dixon and Nasuki				Paris; morn., eve.
18,670 16.08 OCT	Nasuki, Japan	Phone	14,480 20.72 THA	Managua, Nicaragua	Phone to WNG
18,620 16.11 GAU	Hugby, England	15.0	Phone to WM1, VVY	14,400 20.75 DYA	Nauen, Germany	Phone
18,600 16.13 PDM	Kootwijk, Holland	40.0	Phone	14,440 20.78 GBW	Rugby, England	15.0	Phone
18,545 16.18 PCM	Kootwijk, Holland	40.0	Phone	14,380 21.46 VPDZ	Savva, P. I. Islands	Experimental
18,480 16.23 BHM	Praguen, Switzerland	20.0	Phone	14,380 21.48 HXK	Abu Zahel, Cairo, Egypt	20.0	Phone
18,465 16.20 PCK	Kootwijk, Holland	40.0	Phone to Bandoeng	14,320 21.70 SUICH	Qairi, Egypt	Amateur; broadcast
18,340 16.26 WLA	Lawrenceville, N. J.	20.0	Phone to GAS	14,310 21.78 BULZ	Abu Zahel, Egypt	8.0	Phone
18,210 16.38 FZB	Saguen, French Indo-China	15.0	Phone to France	14,300 21.80 TLEZ	Poston, France	12.0	Phone to U. S. A.
18,170 16.42 IUD	Addis Ababa, Ethiopia	Phone	14,280 21.91 KJL	Belima, Calif.	40.0	Phone to Japan, Java.
18,190 16.48 JVB	Nasuki, Japan	10.0	Phone to Java; Z. I.; bc.	14,280 22.00 BFW	Zeeun, Germany	20.0	Broadcast
18,168 16.51 PPZ	Nepetiba, Brazil	20.0	Phone	14,240 22.46 JTK	Kamukuro-Cho, Japan	Experimental; bc.
18,135 16.55 PMC	Bandoeng, Java	40.0	Phone; sometimes bc.	14,235 22.66 GBB	Rugby, England	15.0	Phone
18,090 16.58 TYE	Pontona, France	12.0	Phone to U. S. A.	14,180 22.72 JYQ	Nasuki, Japan	10.0	Phone to Manchukuo; also
18,060 16.62 RQR	Belima, Calif.	40.0	Phone				bc.
18,020 16.65 KQJ	Bolinas, Calif.	40.0	Transpacific phone	14,130 22.77 YVQ	Marapian, Venezuela	20.0	Phone
17,980 16.69 EQZ	Bolinas, Calif.	40.0	Phone	14,120 22.78	Bolima, Calif.	Phone
17,940 16.72 WQB	Rocky Point, N. Y.	40.0	Phone	14,085 23.58 COA3	Drummondville, Canada	15.0	Phone to ships
17,920 16.74 WQF	Rocky Point, N. Y.	40.0	Phone	14,080 23.60 KJL	Manila, P. I.	40.0	Phone
17,790 16.86 GSG	Daventry, England	15.0	Broadcast	14,110 23.71 PNRK	S. S. Normandie	Phone
17,785 16.87 JZL	Nasuki, Japan	Broadcast	14,100 23.83 CWH	Corrie, Uruguay	1.5	Phone
17,780 16.87 W3XK	Pittsburgh, Pa.	40.0	Be.; relays KDKA	14,050 23.99	Italian Ships	Phone
17,760 16.87 W3XAL	Broun Brook, N. J.	15.0	Broadcast; relays WJZ	14,050 24.04 JZE	Nasuki, Japan	10.0	Phone to ships
17,760 16.87 W3XAA	Chicago, Illinois	0.5	Experimental	14,045 24.12 LAC	Coltalia, Italy	52.0	Phone
17,778 16.88 PHI	Huizen, Holland	23.6	Broadcast	14,035 24.28 NFG	San Francisco	Time signals; 4:55-5:00 p.m.
17,760 16.89 W3XE	Wayne, N. J.	Be.; relays WABC	14,030 24.38 GNR	Rabat, Morocco	12.0	Phone to France
17,740 16.89 DJB	Zeeun, Germany	5-50	Broadcast	14,020 24.46 YNE	Parico Canton, Nicaragua	0.1	Phone
17,758 16.90 ZBW5	Hongkong, China	2.0	Broadcast	14,020 24.76 TAA	Archigena, Ya.	Time signals; 9:55-10:00
17,750 16.90 IAC	Coltalia, Italy	14.0	Phone; early mornings	14,020 24.81 GBU	Rugby, England	15.0	a. m. E. S. T.
17,740 16.91 HSP	Bangkok, Siam	20.0	Phone to JVA	14,020 24.93 TYB	Poston, France	Phone to JVB, ships
17,640 17.00	British Ships	Phone	14,020 25.00 KJL	Manila, P. I.	40.0	Broadcast
17,620 17.12 DFB	Nauen, Germany	Phone to YVR	14,020 25.02 TFA	Reykjavik, Iceland	Broadcast
17,480 17.16 VVY2	Kirkee, India	Phone to Rugby	14,020 25.04 TFA	Poston, France	15.0	Phone
17,310 17.33 W3XL	Boum Boon, N. J.	20.0	Experimental	14,020 25.06 GBS	Rugby, England	15.0	Phone to U. S. A.
17,260 17.37 DAF	Norddeich, Germany	20.0	Phone	14,020 25.08 DZE	Zeeun, Germany	20.0	Broadcast
17,260 17.51 HASS	Spetkefcherav, Hungary	20.0	Broadcast	14,020 24.88 PDV	Kootwijk, Holland	60.0	Phone
16,820 17.84 NAA	Arlington, Virginia	Time signals; 9:55-10:00	14,020 24.96 VIT-			
			a. m. E. S. T.	14,020 25.00 RVB	W3K3B		
16,665 18.00	German Ships	Phone	14,020 25.09 IUC	Melbourne, Australia	Tests with Drummondville
16,305 18.40 PCL	Kootwijk, Holland	Phone to Bandoeng	14,020 25.11 KKQ	Moscow, U. S. S. R.	20.0	Be. and phone
16,270 18.44 WLK	Lawrenceville, N. J.	20.0	Phone to Rugby	14,020 25.21 KXWJ	Addis Ababa, Ethiopia	3.5	Phone
16,240 18.47 KTO	Manila, P. I.	Phone to Dixon	14,020 25.21 CT100	Bolima, Calif.	40.0	Phone
16,240 18.51 IRP	Rome, Italy	Phone	14,020 25.21 OLRA	Mexico, D. F., Mexico	Broadcast
16,030 18.71 KKP	Kahuku, Hawaii	40.0	Phone to KWO	14,020 25.22 HP51	Podbrady, Czechoslovakia	25.0	Broadcast
15,985 18.77 KQH	Kabuku, Hawaii	40.0	Phone	14,020 25.22 KXCR	Aqueduct, Panama	0.05	Broadcast
15,950 18.81 PLG	Bandoeng, Java	Phone; afternoon	14,020 25.25 XZXA	Mexico, D. F., Mexico	Broadcast
15,910 18.86 TTYB	San Juan, France	20.0	Phone to Saigon	14,020 25.25 TFAJ	Mexico, D. F., Mexico	0.1	Broadcast
15,895 18.91 JCD	La Granza, Chile	0.5	Phone	14,020 25.25 W3XF	Paris, France	Broadcast
15,860 18.90 CEC	Nasuki, Japan	Phone to Shanghai	14,020 25.26 OLRC	Chicago, Illinois	Be.; relays WENR
15,810 18.97 LSL3	Hurlingham, Argentina	60.0	Phone to London, Rio; morn.	14,020 25.27 W3XK	Podbrady, Czechoslovakia	25.0	Broadcast
			and eve.	14,020 25.28 W3XK	Pittsburgh, Pa.	40.0	Be.; relays KDKA
15,750 19.05 JIA	Tyurki, Formosa	10.0	Phone to Nasuki	14,020 25.29 YDB	Sorabana, Java, D. E. I.	1.0	Phone
15,480 19.13 JZA	Kanjeshe, Manchukuo	20.0	Phone to Nasuki	14,020 25.30 GSE	Daventry, England	20.0	Broadcast
15,660 19.16 JVE	Nasuki, Japan	10.0	Phone to PLE, P. I.; occ. bc.	14,020 25.31 DJP	Zeeun, Germany	3-50	Broadcast

Kc. Meters Call	Location	Kw.	Service, etc.	Kc. Meters Call	Location	Kw.	Service, etc.
11,840 25.34 OLRA	Podebrady, Czechoslovakia	25.0	Broadcast	9,830 31.61 XSMF	Marik, Yonatan, Mexico	0 015	Bc; relays XEDC
11,830 25.36 W2XE	New York, N. Y.	10.0	Bc; relays WABC	9,830 31.61 HJ4ABH	Armenia, Colombia	Bc; relays XEDC
11,830 25.36 W9XAA	Chicago, Illinois	0.5	Bc; relays WCPL	9,830 31.66 GGB	Davenport, England	20.0	Broadcast
11,820 25.34 XE2BR	Hermosillo, Sonora, Mexico	20.0	Bc; relays XE2B	9,810 31.68 HJT	Buenaventura, Colombia	1.0	Broadcast
11,820 25.34 GSN	Davenport, England	20.0	Broadcast	9,810 31.68 YN1ME	Melbourne, Australia	20.0	Broadcast
11,810 25.40 CRXC	Toronto, Canada	0.5	Broadcast	9,804 31.47 OLRA3	Podebrady, Czechoslovakia	20.0	Broadcast
11,810 25.40 IZRO4	Rome, Italy	25.0	Broadcast	9,800 31.58 PRF3	Rio de Janeiro, Brazil	20.0	Broadcast
11,804 25.42 OAX3A	Ica, Peru	5.0	Broadcast	9,800 31.58 HJ4ABE	Cartagena, Colombia	0 05	Broadcast
11,801 25.42 IZRO4	Austria, Vienna	5.0	Broadcast	9,798 31.40 XHPT	Yonatan, Mex. Marine	0 02	Broadcast
11,800 25.42 IZJO	Nazaki, Japan	Broadcast	9,490 31.41 KEI	Bolinas, Calif.	20.0	Phone
11,795 25.43 DJJ	Zeeen, Germany	5-40	Experimental	9,490 31.41 WEF	Rocky Point, M. Y.	20.0	Phone
11,790 25.45 W1XAL	Boston, Mass.	5.0	Broadcast	9,490 31.46 XEDQ	Guadalupe, Jalisco, Mexico	0 05	Bc; relays XED
11,770 25.49 DJD	Zeeen, Germany	5-40	Broadcast	9,490 31.75 TGWA	Bolinas, Calif.	20.0	Phone
11,760 25.51 OLRA4	Podebrady, Czechoslovakia	25.0	Broadcast	9,441 31.78 HC2EBA	Guatemala City, Guatemala	0 2	Experimental
11,750 25.53 GBD	Davenport, England	20.0	Broadcast	9,436 31.82 GJRC	Guaymas, Ecuador	10.0	Broadcast
11,740 25.55 HPLM	David, Panama	0 25	Broadcast	9,436 31.83 NAA	Havana, Cuba	10.0	Broadcast
11,730 25.57 PHJ	Huizen, Holland	0 25	Broadcast; winter months	9,415 31.66 PLV	Arlington, Va.	Time signals; see article on time signals
11,730 25.57 CJLX	Winnipeg, Man., Canada	2.0	Bc; relays CJRC	9,390 32.06	Bandung, Java, D. E. I.	30.0	Phone; sometimes bc.
11,720 25.60 TPA4	Pensacola, Fla.	2.0	Broadcast	9,390 32.06	Fort de France, Martinique, F. W. I.	Broadcast
11,715 25.60 CR7BH	Lourdes, Mar-a-Lago, Massabesett	0 25	Broadcast	9,390 32.06	Bangkok, Siam	Broadcast
11,705 25.63 SM5SX	Stockholm, Sweden	Broadcast	9,390 32.06	Managua, Nicaragua	Broadcast
11,680 25.66 KJO	Kahului, Hawaii	0 0	Phone to Bolinas	9,390 32.06	Puerto Cabezas, Nicaragua	0.1	Phone
11,571 25.71 PPQ	Sepolia, Brazil	5.0	Phone	9,390 32.06	Stokodolov, Hungary	20.0	Broadcast
11,440 25.73 JVL	Nazaki, Japan	20.0	Phone to Bolinas; bc.	9,390 32.06	Kirtlen, India	Phone to England; mornings
11,595 25.81 VRR	Stony Hill, Jamaica	20.0	Phone to Bolinas, Fla.	9,390 32.06	Paris, France	Phone to Algeria
11,495 26.00 XGR	Shanghai, China	20.0	Phone	9,390 32.06	Algeria, Algeria	Phone
11,435 26.24 COCX	Flairville, Australia	Phone to Dumasville	9,390 32.06	Quito, Ecuador	0 5	Broadcast
11,430 26.25 YVE	Puerto Cabezas, Nicaragua	0.1	Bc; relays CMX	9,390 32.06	British Bmpa, French Ships	Phone
11,385 26.35 HBF	Prangins, Switzerland	20.0	Broadcast	9,390 32.06	Bogota, Colombia	Phone
11,340 26.48 DAF	Norddeich, Germany	Phone	9,390 32.06	Makassar, Celebes, D. E. I.	2.0	Phone; oct. bc.
11,280 26.58 HBN	Trujillo, D. R.	0 75	Phone	9,390 32.06	Mazilia, P. I.	Phone
11,140 26.93	German Ships	Phone	9,390 32.06	Sera, Fiji Islands	Broadcast
11,040 27.17 HRW	La Ceiba, Honduras	0.1	Phone	9,390 32.06	Camaguey, Cuba	Broadcast
11,040 27.17 CSR	Lisbon, Portugal	5.0	Broadcast	9,390 32.06	Managua, Nicaragua	0.5	Broadcast
11,000 27.27 ZLT4	Wellington, New Zealand	Broadcast	9,390 32.06	German Ships	Phone
11,000 27.27 PLP	Bandung, Java	3.0	Phone; oct. bc.	9,390 32.06	Norddeich, Germany	Phone to ships
10,935 27.38 HSQ2	Bangkok, Siam	Phone; bc.	9,390 32.06	Guaymas, Ecuador	0 015	Broadcast
10,850 27.63 DFL	Nazari, Germany	Phone	9,390 32.06	Amsterdam, Paraguay	Broadcast
10,840 27.68 KWP	Dixon, Ohio	20.0	Phone to Hawaii	9,390 32.06	La Ceiba, Honduras	0.1	Phone
10,770 27.86 GCV	Rugby, England	15.0	Phone	9,390 32.06	Managua, Brazil	Phone; bc.
10,740 27.93 JVN	Nazaki, Japan	20.0	Phone to U. S. A.; oct. bc.; relays JOA K	9,390 32.06	Mazilia, P. I.	Phone to Dixon, Calif.
10,670 28.12 CEC	La Gracia, Chile	0.5	Phone	9,390 32.06	Rabat, Morocco	13.0	Phone; bc.
10,660 28.14 JVN	Nazaki, Japan	20.0	Bc; relays JOA K	9,390 32.06	Antofagasta, Chile	0 4	Phone
10,620 28.23 WEF	Rocky Point, N. Y.	40.0	Phone	9,390 32.06	Northampton, Argentina	80.0	Phone to Rio; night
10,610 28.28 WEA	Rocky Point, N. Y.	40.0	Phone	9,390 32.06	Kemulawa, Cebu, Japan	20.0	Phone
10,578 28.36 FVB	Paris, France	Experimental	9,390 32.06	Abu Zabal, Egypt	20.0	Phone
10,535 28.48 JIB	Tyureki, Formosa	6.0	Phone to Japan	9,390 32.06	Guaymas, Ecuador	0.5	Broadcast
10,430 28.76 TYES	Pontlevoy, France	12.0	Phone to B. S. A.	9,390 32.06	Northampton, Argentina	80.0	Phone
10,430 28.76 YBG	Medan, Sumatra, D. E. I.	Phone; oct. bc.	9,390 32.06	Puerto Cabezas, Nicaragua	20.0	Phone
10,420 28.76 XGW	Shanghai, China	20.0	Phone	9,390 32.06	Prangins, Switzerland	20.0	Phone
10,410 28.82 KES	Bolinas, Calif.	20.0	Phone	9,390 32.06	La Gracia, Chile	0.5	Phone
10,410 28.82 LSY	Monte Grande, Argentina	18.0	Phone	9,390 32.06	Abu Zabal, Egypt	20.0	Phone
10,410 28.82 PDK	Dixon, Ohio	20.0	Phone	9,390 32.06	Managua, Nicaragua	Broadcast
10,400 28.83 KEZ	Dixon, Ohio	40.0	Phone	9,390 32.06	Puntarenas, Costa Rica	0 13	Broadcast
10,375 28.92 JVO	Nazaki, Japan	10.0	Phone to Massachusetts; bc.	9,390 32.06	Kahului, Hawaii	40.0	Phone
10,370 28.93 EAJ43	Tenerife, Canary Islands	Broadcast	9,390 32.06	Nazaki, Japan	20.0	Phone; to Java
10,350 29.08 PJ33	Medan, Sumatra, D. E. I.	Phone; oct. bc.	9,390 32.06	Rocky Point, M. Y.	40.0	Phone
10,350 29.08 LSX	Medan, Sumatra, D. E. I.	Phone; oct. bc.	9,390 32.06	Kahului, Hawaii	40.0	Phone
10,335 29.03 ZFD	St. George, Bermuda	1.5	Phone; mostly telegraph	9,390 32.06	Medan, D. F. Mexico	20.0	Broadcast
10,340 29.03 ORK	Raymuela, Brazil	11.0	Phone	9,390 32.06	Guaymas, Ecuador	Broadcast
10,310 29.10 PFI	Sepolia, Brazil	Phone	9,390 32.06	Adelaide, Australia	Experimental
10,300 29.15 LK13	Medan, Sumatra, D. E. I.	Phone to London, Rio; night	9,390 32.06	Stockholm, Sweden	0 05	Broadcast
10,290 29.16 DZC	Zeeen, Germany	Phone	9,390 32.06	Barcelona, Spain	Broadcast
10,240 29.64 PMN	Bandung, Java, D. E. I.	3.0	Phone; oct. bc.	9,390 32.06	Managua, Nicaragua	Bc; amateur
10,260 29.72 LK13	Burlington, Argentina	63.0	Phone to Madrid, Bortia, Rio	9,390 32.06	San Juan, Puerto Rico, C. I.	Broadcast
10,230 29.83 CEC	Antofagasta, Chile	0.4	Phone; bc.	9,390 32.06	San Sebastian, Spain	Broadcast
10,230 29.83 PSH	Marapen, Brazil	Phone; bc.	9,390 32.06	La Ceiba, Honduras	0.1	Phone
10,230 29.83 RIG	Baku, U.S.S.R.	Phone	9,390 32.06	Trujillo, D. R.	0 05	Broadcast
10,210 29.88 OY4A	London, England	18.0	Phone to GRK	9,390 32.06	Cristo de Aranza, Venezuela	Broadcast
10,190 29.76 RIR	TMA, U.S.S.R.	4.0	Phone to GRK, RNE	9,390 32.06	Trujillo, D. R.	0 025	Broadcast
10,070 29.70 KDN	Madrid, Spain	10.0	Experimental	9,390 32.06	Trujillo, D. R.	0 025	Broadcast
10,065 29.81 TDE	Kangdoli, Manchukuo	20.0	Phone to JVO	9,390 32.06	Trujillo, D. R.	0 025	Broadcast
10,055 29.84 ZCJ	St. George, Bermuda	5.0	Phone	9,390 32.06	Trujillo, D. R.	0 025	Broadcast
10,045 28.84 SYD	Abu Zabal, Egypt	20.0	Phone to Germany, England	9,390 32.06	Trujillo, D. R.	0 025	Broadcast
10,042 29.87 DZB	Zeeen, Germany	Phone	9,390 32.06	Trujillo, D. R.	0 025	Broadcast
10,030 30.00 WVW	Belleville, Md.	Standard frequency	9,390 32.06	Trujillo, D. R.	0 025	Broadcast
9,990 30.03 KAZ	Mazilia, P. I.	40.0	Phone	9,390 32.06	Trujillo, D. R.	0 025	Broadcast
9,940 30.18 CSW	Lisbon, Portugal	Phone	9,390 32.06	Trujillo, D. R.	0 025	Broadcast
9,890 30.32 LSN2	Burlington, Argentina	0 0	Phone to New York; night	9,390 32.06	Trujillo, D. R.	0 025	Broadcast
9,840 30.43 EAG	Madrid, Spain	20.0	Broadcast	9,390 32.06	Trujillo, D. R.	0 025	Broadcast
9,840 30.49 JYS	Kemulawa, Cebu, Japan	10.0	Bc; test	9,390 32.06	Trujillo, D. R.	0 025	Broadcast
9,740 30.86 COCQ	Havana, Cuba	Bc; relays CMQ	9,390 32.06	Trujillo, D. R.	0 025	Broadcast
9,735 31.01 DZA	Zeeen, Germany	Phone	9,390 32.06	Trujillo, D. R.	0 025	Broadcast
9,670 31.02 TI4NRH	Berodia, C. R.	Broadcast	9,390 32.06	Trujillo, D. R.	0 025	Broadcast
9,665 31.04 CT1AA	Lisbon, Portugal	Broadcast	9,390 32.06	Trujillo, D. R.	0 025	Broadcast
9,660 31.06 PFI	Marapen, Brazil	5.0	Phone	9,390 32.06	Trujillo, D. R.	0 025	Broadcast
9,660 31.06 LRX	Buenos Aires, Argentina	2.0	Bc; relays LRI	9,390 32.06	Trujillo, D. R.	0 025	Broadcast
9,645 31.10 H3W3	Puerto-Arino, Haiti	0 05	Broadcast	9,390 32.06	Trujillo, D. R.	0 025	Broadcast
9,635 31.14 IZBO3	Rome, Italy	20.0	Broadcast	9,390 32.06	Trujillo, D. R.	0 025	Broadcast
9,635 31.18 HJ4ABP	Cartagena, Colombia	6.7	Broadcast	9,390 32.06	Trujillo, D. R.	0 025	Broadcast
9,610 31.22 YDB	Sorabaja, Java, D. E. I.	1.0	Bc; relays YDA	9,390 32.06	Trujillo, D. R.	0 025	Broadcast
9,605 31.22 PPSJ	Panama, Panama	10.0	Broadcast	9,390 32.06	Trujillo, D. R.	0 025	Broadcast
9,600 31.25 CQN	Macao, Port China	Broadcast	9,390 32.06	Trujillo, D. R.	0 025	Broadcast
9,600 31.25 CR960	Santiago, Chile	Broadcast	9,390 32.06	Trujillo, D. R.	0 025	Broadcast
9,600 31.25 RKN	Moscow, U.S.S.R.	Broadcast	9,390 32.06	Trujillo, D. R.	0 025	Broadcast
9,587 31.26 VK6ME	Perth, Australia	Experimental	9,390 32.06	Trujillo, D. R.	0 025	Broadcast
9,585 31.27 HBL	Prangins, Switzerland	20.0	Broadcast	9,390 32.06	Trujillo, D. R.	0 025	Broadcast
9,580 31.28 PCJ	Elson, Holland	Broadcast	9,390 32.06	Trujillo, D. R.	0 025	Broadcast
9,580 31.28 W3XAU	Philadelphia, Pa.	10.0	Bc; relays WGAU	9,390 32.06	Trujillo, D. R.	0 025	Broadcast
9,580 31.28 VK2ME	Sydney, Australia	20.0	Broadcast	9,390 32.06	Trujillo, D. R.	0 025	Broadcast
9,580 31.31 K3LRL	Lyndhurst, Vt., Australia	20.0	Broadcast	9,390 32.06	Trujillo, D. R.	0 025	Broadcast
9,580 31.31 GSC	Davenport, England	20.0	Broadcast	9,390 32.06	Trujillo, D. R.	0 025	Broadcast
9,575 31.34 HJ4ABC	Cartagena, Colombia	0 25	Broadcast	9,390 32.06	Trujillo, D. R.	0 025	Broadcast
9,570 31.35 W1XK	Mazilia, Mex.	10.0	Bc; relays W2B, WBEA	9,390 32.06	Trujillo, D. R.	0 025	Broadcast
9,565 31.36 PVB	0.1	Broadcast	9,390 32.06	Trujillo, D. R.	0 025	Broadcast
9,565 31.36 VUB	Bombay, India	4.5	Broadcast	9,390 32.06	Trujillo, D. R.	0 025	Broadcast
9,560 31.38 DIA	Zeeen, Germany	5.0	Broadcast	9,390 32.06	Trujillo, D. R.	0 025	Broadcast
9,560 31.38 HJ4ABB	Barranquilla, Colombia	1.0	Broadcast	9,390 32.06	Trujillo, D. R.	0 025	Broadcast
9,561 31.41 HRZY	Port-au-Prince, Haiti	0 03	Broadcast	9,390 32.06	Trujillo, D. R.	0 025	Broadcast
9,560 31.41 OLRA3	Podebrady, Czechoslovakia	25.0	Broadcast	9,390 32.06	Trujillo, D. R.	0 025	Broadcast
9,540 31.47 LK13	Jeloy, Norway	1.0	Broadcast	9,390 32.06	Trujillo, D. R.	0 025	Broadcast
9,540 31.47 DYN	Zeeen, Germany	5-40	Broadcast	9,390 32.06	Trujillo, D. R.	0 025	Broadcast
9,535 31.46 JZJ	Nazaki, Japan	Broadcast	9,390 32.06	Trujillo, D. R.	0 025	Broadcast
9,530 31.48 W2XAF	Schenectady, N. Y.	40.0	Bc; relays WGY	9,390 32.06	Trujillo, D. R.	0 025	Broadcast
9,525 31.49 ZBWS	Hong-Kong, China	2.0	Bc; relays ZBW	9,390 32.06	Trujillo, D. R.	0 025	Broadcast

Kc. Meters Call	Location	Kw.	Service, etc.	Kc. Meters Call	Location	Kw.	Service, etc.
6,350 47.24 YN15	Waspoak, Nicaragua	0.1	Phone	6,025 49.70 HJ1ABJ	Santa Marta, Colombia	0.025	Broadcast
6,350 47.24 YN17	Wapam, Nicaragua	0.1	Phone	6,020 49.83 DJC	Zoezen, Germany	5-50	Broadcast
6,357 47.20 HRP1	San Pedro Sula, Honduras	0.075	Broadcast	6,020 49.83 XEUW	Veracruz, Ver., Mexico	0.1	Broadcast
6,340 47.32 YNE	Puerto Cabezas, Nicaragua	0.1	Phone	6,015 49.88 XEWI	Mexico, D. F., Mexico	0.25	Broadcast
6,340 47.32 HIX	Trujillo, D. R.	0.1	Broadcast	6,015 49.90 HJ1ABH	Bogota, Colombia	0.1	Broadcast
6,340 47.32 JZG	Nazaki, Japan	10.0	Phone to ships	6,010 49.92 VP2MR	Georgetown, British Guiana	0.25	Amateur; bc.
6,310 47.54 HIZ	Trujillo, D. R.	0.02	Broadcast	6,010 49.92 CNGO	Havana, Cuba	0.25	Broadcast
6,300 47.62 YV4RD	Maracay, Venezuela	0.1	Broadcast	6,010 49.92 OLR2A	Podebrady, Czechoslovakia	25.0	Broadcast
6,280 47.77 HIG	Trujillo, D. R.	0.05	Broadcast	6,005 49.98 CFCX	Montreal, Quebec	0.075	Be., relays CFCF
6,240 47.77 COHB	Sancti Spiritus, Cuba	0.15	Broadcast	6,005 49.96 VEDN	Montreal, Quebec	4.0	Broadcast
6,270 47.84 YVSRP	Caracas, Venezuela	0.1	Broadcast	6,003 49.97 XEUB	Mexico, D. F., Mexico	1.0	Be.; relays XEB
6,260 47.92 OXA4G	Lima, Peru	0.1	Broadcast	6,000 50.00 HJ1ABC	Quibdo, Colombia	0.1	Broadcast
6,250 48.05 YVSRJ	Caracas, Venezuela	0.1	Broadcast	6,000 50.00 YOI	Bucharest, Roumania	0.1	Broadcast
6,243 48.05 HIN	Trujillo, D. R.	0.75	Broadcast	6,000 50.00 RV59	Moscow, U.S.S.R.	20.0	Broadcast
6,238 48.11 HRD	La Ceiba, Honduras	0.25	Broadcast	6,000 50.00 TGWA	Guatemala City, Guatemala	0.2	Broadcast
6,225 48.18 YVIRG	Valera, Venezuela	0.2	Broadcast	6,000 50.00 FIQA	Tananarive, Madagascar	0.1	Broadcast
6,205 48.35 YVIRI	Coro, Venezuela	0.2	Broadcast	5,980 50.17 HIX	Trujillo, D. R.	1.0	Broadcast
6,200 48.39 XEKS	Mexico, D. F., Mexico	0.1	Broadcast	5,969 50.26 HVJ	Vatican City, R.	10.0	Broadcast
6,200 48.39 COKG	Santiago, Cuba	2.4	Be.; relays CMKB	5,955 50.38 HJN	Bogota, Colombia	0.1	Broadcast
6,198 48.08 HIRQ	Ciudad, Trujillo	0.025	Broadcast	5,955 50.04 RPT	Tashkent, U.S.S.R.	1.0	Phone
6,190 48.47 HIIA	Santiago de los Caballeros, D. R.	0.05	Broadcast	5,950 50.08 HJ2ABD	Bucaramanga, Colombia	0.1	Broadcast
6,164 48.67 OAX1B	Chilayo, Peru	0.3	Be.; relays OAK1A	5,940 50.50 HPGX	Colon, Panama	0.1	Broadcast
6,150 48.70 CJRO	Winnipeg, Man., Canada	0.3	Be.; relays CJRC	5,940 50.50 TG2X	Guatemala City, Guatemala	0.2	Police; bc.
6,150 48.78 FT4AJ	Tunja, Venezuela	0.1	Broadcast	5,925 50.64 HJ2S	Port-au-Prince, Haiti	0.1	Be.; relays HJ2T
6,156 48.73 YVSRD	Caracas, Venezuela	1.0	Broadcast	5,925 50.71 YV4RH	Valencia, Venezuela	0.1	Broadcast
6,150 48.78 CB615	Santiago, Chile	0.15	Broadcast	5,917 50.71 YV15RV	Maracay, Venezuela	0.1	Broadcast
6,150 48.78 H15N	Santiago de los Caballeros, D. R.	0.1	Broadcast	5,899 50.84 YV3RA	Barquisimeto, Venezuela	0.25	Broadcast
6,150 48.78 HJ4ABU	Pereira, Colombia	0.1	Broadcast	5,882 51.00 ZEA	Salisbury, So. Rhodesia	0.325	Broadcast
6,150 48.78 V9CCL	Winnipeg, Man., Canada	0.1	Broadcast	5,880 51.02 IDA	Addis Ababa, Ethiopia	0.1	Phone
6,148 48.80 ZEB	Bulawayo, So. Rhodesia	0.325	Broadcast	5,875 51.05 HRN	Psiquipala, Honduras	0.1	Broadcast
6,140 48.86 W8XK	Pittsburgh, Pa.	40.0	Be.; relays KDKA	5,865 51.15 HJLJ	San Pedro de Macoris, D. R.	0.04	Broadcast
6,137 48.88 CR7AA	Mozaambique	0.33	Broadcast	5,850 51.28 YV1RB	Maracaibo, Venezuela	0.3	Broadcast
6,133 48.91 XEXA	Mexico, D. F., Mexico	0.1	Broadcast	5,846 51.32 KRO	Kahuku, Hawaii	40.0	Phone
6,132 48.92 CTIGO	Parade, Portugal	0.35	Broadcast	5,850 51.46 CWD	Montevideo, Uruguay	0.1	Phone to Tokyo
6,130 48.94 COXU	Havana, Cuba	0.2	Be.; relays CMCD	5,830 51.46 TCIPIH	(Cerrito)	1.5	Phone
6,130 49.04 LKJ1	Jeloy, Norway	0.1	Broadcast	5,830 51.49 TIX2	San Jose, Costa Rica	1.0	Broadcast
6,130 49.04 VP3BO	Georgetown, British Guiana	0.15	Broadcast	5,800 51.72 YV3RC	San Jose, Costa Rica	0.5	Broadcast
6,128 48.96 OAX7A	Cuzco, Peru	1.0	Broadcast	5,800 51.72 ZGZF	Manila, P. I.	1.0	Phone; ooc. bc.
6,125 48.98 CX1A	Montevideo, Uruguay	1.0	Broadcast	5,790 51.81 JVVU	Nazaki, Japan	10.0	Phone to Manchukuo; also bc.
6,122 49.01 HJ3ABX	1-guta, Colombia	0.1	Broadcast	5,780 51.90 OAX4D	Lima, Peru	20.0	Broadcast
6,122 49.01 OAX4P	1-uacayo, Peru	0.1	Broadcast	5,780 51.90 HJ4ABD	Medellin, Colombia	0.1	Broadcast
6,122 49.02 YV4S	Arequipa, Peru	1.5	Broadcast	5,738 52.10 YNOP	Managua, Nicaragua	0.1	Broadcast
6,120 49.02 XE1PW	Bandoeng, Java, D. E. I.	1.5	Broadcast	5,738 52.31 HCPM	Quito, Ecuador	0.3	Broadcast
6,120 49.02 NEFT	Veracruz, Veracruz, Mexico	0.12	Broadcast	5,730 52.36 JVVU	Nazaki, Japan	10.0	Phone to Formosa; bc.
6,120 49.02 HJF2	Panama City, Panama	0.2	Broadcast	5,713 52.51 TGS	Guatemala City, Guatemala	0.2	Broadcast
6,117 49.04 FMZ	Wayne, N. J.	10.0	Be.; relays WABC	5,710 52.54 YV2RA	San Cristobal, Venezuela	0.75	Broadcast
6,115 49.06 XFCU	Mexico, D. F., Mexico	0.1	Broadcast	5,705 52.58 CFIH	Roseland, B. C., Canada	0.1	Phone; bc.
6,115 49.06 HJ4AB	Guadalajara, Mexico	1.0	Broadcast	5,670 52.91 DAP	Nordkirk, Germany	0.1	Phone
6,115 49.06 HJ4BB	Barraquilla, Colombia	1.0	Broadcast	5,555 54.00 YNE	Puerto Cabezas, Nicaragua	0.1	Phone
6,110 49.10 GSE	Podebrady, Czechoslovakia	25.0	Broadcast	5,550 54.53 TSHH	San Ramon, Costa Rica	0.2	Broadcast
6,110 49.10 V9HIX	Davenport, England	20.0	Broadcast	5,490 54.64 ROJ	Sverdlovsk, U.S.S.R.	15.0	Phone
6,109 49.10 VUC	Halifax, N. S., Canada	0.2	Be.; relays CHNS	5,435 55.19 LSH	Monte Grande, Argentina	0.1	Phone
6,106 49.11 HJ4AB	Calcutta, India	0.5	Broadcast	5,415 55.40 PMY	Bandoeng, Java, D. E. I.	0.45	Phone; bc.
6,106 49.11 HJ4AB	Manitoba, Colombia	0.1	Broadcast	5,170 58.03 HRW	La Ceiba, Honduras	0.1	Phone
6,106 49.18 W8XK	Bound Brook, N. J.	20.0	Be.; relays WJZ	5,140 58.37 PMY	Bandoeng, Java, D. E. I.	0.6	Broadcast
6,100 49.20 YTC	Chicago, Illinois	6.0	Be.; relays WENR	5,110 58.71 KIKB	Bolinas, Calif.	40.0	Phone
6,098 49.20 ZTJ	Belgrade, Yugoslavia	2.5	Broadcast	5,105 58.78 KEC	Bolinas, Calif.	40.0	Phone
6,097 49.20 HJ4AB	Johannesburg, S. Africa	5.0	Broadcast	5,025 59.70 ZFA	Hamilton, Bermuda	1.5	Phone
6,090 49.26 ZHW2	Medellin, Colombia	0.1	Broadcast	5,000 60.00 WVV	Bellville, Md	1.0	Frequency Standard; Tus. Wed., Fri., noon, 1 p.m. E. S. T.
6,090 49.26 HJ4ABC	Hong-Kong, China	2.0	Be.; relays ZBW	5,000 60.00 ZUD	Pretria, S. Africa	5.0	Experimental
6,090 49.26 CRXK	Ibague, Colombia	0.5	Broadcast	4,975 60.30 GBC	Rugby, England	5.0	Phone to ships
6,085 49.30 HJ4ABD	Toronto, Ont., Canada	0.5	Broadcast	4,820 62.24 GDW	Rugby, England	15.0	Phone to U. S.
6,083 49.32 VQ7LO	Nairobi, Kenya, Africa	1.25	Broadcast	4,795 62.56 V9BKB	Vancouver, B. C.	0.25	Broadcast
6,080 49.34 ZHU	Penang, Straits Settlements	0.05	Broadcast	4,753 63.11 WOX	Lawrenceville, N. J.	20.0	Phone
6,080 49.34 CFS	La Paz, Bolivia	0.1	Broadcast	4,735 63.41 WQJ	Ocean Gate, N. J.	20.0	Phone
6,060 49.34 W8XAA	Chicago, Illinois	20.0	Be.; relays WCFL	4,610 65.08 YN17	Wapam, Nicaragua	0.1	Phone
6,079 49.35 DJM	Zoezen, Germany	8-50	Experimental	4,610 65.08 YN15	Waspoak, Nicaragua	0.1	Phone
6,075 49.38 HJF5P	Colon, Panama	0.2	Broadcast	4,610 65.08 YNE	Puerto Cabezas, Nicaragua	0.1	Phone
6,075 49.38 YV1H1	Maracaibo, Venezuela	0.1	Broadcast	4,610 65.08 YN16	Boon, Nicaragua	0.1	Phone
6,073 49.37 CQJ	Macao, Asia	0.5	Broadcast	4,605 65.16 HRW	La Ceiba, Honduras	0.1	Phone
6,070 49.42 YV3S	Vancouver, B. C., Canada	0.1	Broadcast	4,600 65.22 HC2ET	Guayaquil, Ecuador	0.4	Broadcast
6,070 49.42 CFXR	Toronto, Ontario	1.0	Broadcast	4,465 69.19 CFA2	Drummondville, P. Q.	15.0	Phone
6,070 49.42 HJ3ABF	Bogota, Colombia	0.1	Broadcast	4,355 68.89 IAC	Canada	5.0	Phone
6,067 49.45 VFB	Colombo, Ceylon	0.1	Broadcast	4,273 70.21 RV15	Khabarovsk, U.S.S.R.	20.0	Broadcast
6,065 49.46 X8XR	Mexico, D. F., Mexico	0.1	Broadcast	4,107 72.05 HJ3B	Quito, Ecuador	0.5	Broadcast
6,060 49.50 OXY	Skamleick, Denmark	0.1	Broadcast	4,100 72.17 LKJ1	Jeloy, Norway	1.0	Experimental
6,060 49.50 W8XAL	Cincinnati, Ohio	10.0	Be.; relays WLW	4,097 73.23 WND	Hialeah, Fla.	0.4	Phone
6,060 49.50 W8XAU	Philadelphia, Pa.	10.0	Be.; relays WCAU	4,002 74.77 CT2AJ	San Miguel, Azores	0.5	Amateur; bc.
6,060 49.59 HJ4AB	Bogota, Colombia	1.0	Broadcast	4,000 75.00 CT3XQ	Funchal, Madeira	0.1	Broadcast; exp.
6,050 49.59 XEFP	Mexico, D. F., Mexico	0.1	Broadcast	3,175 94.48 YN15	Wapam, Nicaragua	0.1	Phone
6,045 49.62 XETW	Mexico, D. F., Mexico	0.1	Broadcast	3,175 94.48 YN16	Boon, Nicaragua	0.1	Phone
6,042 49.65 HJ4ABG	Barraquilla, Colombia	0.15	Broadcast	3,170 94.48 YN16	Puerto Cabezas, Nicaragua	0.1	Phone
6,040 49.67 W4XB	Miami Beach, Fla.	2.5	Be.; relays WTOD	3,800 78.95 ZP11	Auncon, Paraguay	0.1	Broadcast
6,040 49.67 HJ4B	Caballeron, D. R.	0.1	Broadcast	3,770 75.56 HJ4B	Basle, Switzerland	0.1	Broadcast
6,040 49.67 W1XAL	Boston, Mass.	5.0	Broadcast	3,525 81.11 HJ4BQ	Lausanne, Switzerland	0.1	Broadcast
6,040 49.67 YDA	Tadongprik, Java, D. E. I.	10.0	Broadcast	3,376 88.83 HJ43	Barranquilla, Colombia	0.1	Phone
6,033 49.72 HJ4ABP	Medellin, Colombia	0.1	Broadcast	3,330 92.88 YV2V	D. E. I.	20.0	Broadcast
6,030 49.75 OLR2B	Podebrady, Czechoslovakia	25.0	Broadcast	3,010 98.68 YDA	Tadongprik, Java, D. E. I.	10.0	Broadcast
6,030 49.75 HJ5B	Panama, Panama	0.1	Broadcast				
6,030 49.75 V8CA	Calgary, Alberta, Canada	0.1	Be.; relays CFCN				
6,030 49.75 XEB4	Manatlan, Mexico	0.1	Broadcast				



Fine quality radio tone depends on fine quality radio tubes and parts . . . Insist on . . . NATIONAL UNION TUBES and PARTS to get the most out of your set.



Ted Husing recruits a mowing machine to carry himself, portable relay transmitter and engineers around the lengthy fairway of a golf club while he presents a word picture of the event.

BROADCASTING THE NEWS

WITH greater speed than newspapers can be published and distributed, radio supplies the public with news flashes throughout the day. In addition to news bulletins, there are stellar commentators who interpret the events of the day editorially. News re-enactment programs are also popular; actors and actresses with expert mimicking ability bring to life the stories of the headlines.



A section of the busy news department of NBC where wired material from press associations is prepared for the air. Right: A scene from the "March of Time," a pioneer news re-enactment feature.



Walter Winchell, the Broadway columnist, Lowell Thomas and Edwin C. Hill, three long-established air commentators.



It's always news when the President and the First Lady takes to the airways. The President is shown at the left in a typical railroad platform broadcast. Mrs. Roosevelt is apparently setting a record for broadcasts by Presidents' wives.

SAY IT WITH A SONG

THAT'S what sponsors believe and they do that very thing! Only they're smart enough to have talented men and women do it for them. On these pages are representative vocalists who are responsible for the tunes you hum to yourself after a night of radio listening. This branch of radio, particularly, offers big opportunities to newcomers.

The Revelers, a pioneer air quartet that's still going strong.



"Autograph please!" is the request and Lucille Manners and Lanny Ross are seen obliging.



Del Casino and Loretta Clemen, whose voices are known from coast to coast.



And Harriet Hilliard and Don Ross, two more top-notch mike vocalists. Left: Recognize her! It's Martha Tilton, the girl on the cover. She's featured with Benny Goodman's Orchestra.



Songstresses Dorothy Arnold and Sylvia Froos, who have "an eye" as well as "ear" appeal.



Left to right: Claire Sherman, Jack Baker and Joan Edwards, popular network songsters. And below, left to right, are Lucy Monroe, Jane Froman and Ethel Skutta, whose voices have wide followings.



Right: A scene such as this can only occur in a dream or in a Hollywood musical talkie. In this case it's the latter. And in the foreground is Kenny Baker, the young singer who "made the grade" cinematically as well as microphonically.



YE OLDE FAMILY ALBUM

HERE are some photos from the family albums of your air favorites. Can you identify them from these photos taken when they were young? See how good your guess is before you look at the captions on the lower right.



1. He's popular as a dance conductor, singer and variety show director. He looks the same today (outside of the haircut!)



2. She's known as "The Nitwit of the Networks." She looks innocent enough here but she turned into radio's leading exponent of daffy humor.



3. These two lads used burnt cork and a Harlem dialect to gain fame.



4. This girl's name comes to mind whenever you hear "Shine on, Harvest Moon." The young man at the right scored his greatest mike success with the aid of a gong. He's pictured here as a young yachtsman making a formal (see the hat!) call on neighboring boats.



OF COURSE YOU KNEW!

1. Rudy Vallee.
2. Gracie Allen.
3. Freeman Gosden (Amos) and Charles Correll (Andy).
4. Ruth Etting and Major Bowes.

**Don't
Monkey
with your
RADIO**



**Call us for
RADIO
SERVICE
ALL WORK
*Guaranteed***



We recommend
**NATIONAL UNION RADIO TUBES
CONDENSERS**

CALL US FOR RADIO REPAIRS

Guaranteed Work on All Makes

If your radio hums, buzzes, crackles, fades or stops playing altogether, call us!

We have scientific instruments which quickly locate radio troubles and show us exactly what must be done to cure them.

We are experts with a broad training in the science of radio repairs and are equipped to cope with problems on all makes of sets.

We use quality parts in all of our work and guarantee every job fully.

Our charges are reasonable and our service is fast.

Call us for radio repairs at any time and be assured of full satisfaction.



Spencer Electric Company

Spencer, Wisconsin