

# Radio Foto Log

15¢

PUBLISHED BY NATIONAL UNION RADIO CORPORATION  
57 STATE STREET NEWARK, NEW JERSEY



MARTHA TILTON  
Vocal Star of Benny Goodman's Swing Band



TELEVISION  
IN THE HOME



PROFESSOR QUIZ



CHARLIE McCARTHY  
AND ANDREA LEEDS

*You can  
play any night  
if your*  
**RADIO'S  
RIGHT!**

**CBS**

NATIONAL UNION RADIO TUBES  
**MUTUAL**  
FOR BEST RECEPTION

**NEWS  
COMEDY  
DRAMA**

NATIONAL UNION RADIO TUBES  
**NBC**  
FOR BEST RECEPTION

**SYMPHONY  
DANCE BANDS  
OPERA**

**NATIONAL UNION**

**RADIO TUBES AND CONDENSERS**

*Ask us about NEW SETS  
or Call us for*

**EXPERT RADIO SERVICE**





# Radio Foto Log

PUBLISHED BY NATIONAL UNION RADIO CORPORATION  
57 STATE STREET NEWARK, NEW JERSEY

Manufacturers of National Union Radio Tubes and Parts

EDITED BY SAMUEL KAUFMAN

## The Listener Always Wins

**P**ROGRAM executives of leading radio stations and advertising agencies are ever on the alert for new ideas that will win mass audiences. The competition to win and hold listeners to air features is always keen. Keen rivalry is demonstrated between sponsors of similar wares as well as between advertisers who maintain simultaneous broadcasting schedules.

Radio editors of newspapers and magazines have often indicated that their readers disliked two stellar hours on the air at the same time inasmuch as they were forced to forego one in favor of the other and it was difficult to make a choice.

However, sponsors haven't got much choice in the matter of time. True, there are twenty-four hours to the day but most big advertisers desire the evening hours between 7 and 10 o'clock when they believe they can reach the biggest possible audiences.

Rather than the listener *losing* one good program by listening to another excellent feature on the air at the same time, he should remember that the high standard of the broadcast to which he's listening is maintained by the scheduling of a high-calibre hour on the other station or network. He's not losing anything. Rather, he's given a wider choice of program fare and the odds of giving him a program he'll enjoy are considerably in his favor.

From season to season, the main classifications of radio programs retain large followings they have earned through the years. Dance bands, comedy, drama, news, variety, classical music and other headings are never replaced. But new ideas as well as new stars do constantly pop into the radio schedules and some of them reach the high-salary and high-popularity brackets in very short time.

Audience-participation shows have been gaining larger and larger followings since they came into being on a big scale a couple of seasons back. Amateur hours, under this heading, were the opening guns in the campaign to recruit Mr. Next Door Neighbor for microphone appearances. Now the lead in audience participation has been taken by the many quiz, spelling bee and "what do you know?" features that stud program schedules.

But the heavy draw of new ideas—even the smash hits—doesn't dig into the popularity of such perennial headliners as Jack Benny, Rudy Vallee, Bing Crosby and the many other topnotch stars who helped make broadcasting the leading entertainment medium it now is.

The intriguing thing about radio listening

is that it always brings surprises and thrills in new offerings as well as reliably presenting the best of the old-established stars. And listeners, through experience, know that forthcoming features are "sure things" in the way of good, wholesome entertainment.



Jack Benny Comes to Town

# KNOWLEDGE IS FUN

**YOU** may never have thought so when you went to school. But since radio quizz programs came into popularity, it's been fun indeed to participate in the "what do you know?" games. Sidewalk interviews, studio spelling and question bees, word games and even musical-guessing programs have soared the heights of radio fame, many of these features ranking among the most popular (according to surveys) on the air. One reason why the listener gets an added kick out of the quizz features is that he has the chance of participating in the mike game himself. He can test his own wits against the microphone contestants. But he must remember that he has two advantages. He can look the answer up in dictionaries, atlases and other reference books, and there is no chance of mike-fright.



"True or False?" asks Dr. Harry Hagen after he reads a statement. No, the placard-toting men are not pickets. It's customary on quizz programs to have the contestants wear their names on cards over their chests so that the master-of-ceremonies can address them.



Left to right: Max Eastman, author, humorist and raconteur, who heads the CBS Word Game; Professor Quiz (Craig Earl) paying off a winner with silver dollars, and Paul Wing, master of the NBC Spelling Bee.



Three topnotch cross-examiners: (left to right): "Uncle Jim" McWilliams of Question Bee fame; Kay Kyser, the orchestra leader who directs the musical quizz show known as the Kollege of Musical Knowledge, and Franklin P. Adams ("F. P. A.") of NBC's "Information Please."



## VOX POP

**T**HIS program, conducted by Parks Johnson and Wallace Butterworth, was one of the first of the quiz programs and claims to be the first network show of its type. The show differs from the other question-and-answer periods in that it is broadcast from public and semi-public spots and never from a studio. It used to go on the air from street corners until traffic congestion caused it to be moved into hotel lobbies, railroad terminals and the like. Passers-by, unrehearsed, are recruited from the crowd that gathers around the mike and the result is an amusing, informative quiz program which is greatly enhanced by the spontaneous humor arising from Johnson's and Butterworth's banter with their guests. Turn over to the next page and see how you would score if you happened to be selected for the Vox Pop broadcast. Parks Johnson selected the questions (and parenthetical answers) especially for readers of Radio Foto Log.

Here they are: Vox Poppers Parks Johnson and Wallace Butterworth.



Left: They're never too young to know the answer! Here's a five-year-old doing his stuff! Right: The English vicar who married the Duke and Duchess of Windsor—Rev. Robert Anderson Jardine—and a Chinese nurse meet for a session of Q's and A's wit! Johnson.



Even a cigar store Indian pops up at the Vox Pop mike, but we doubt whether he was interviewed. Right: Harry M. Nanos—noted for his likeness to the late Will Rogers—takes to the air with Parks and Wally.



# WHAT DO YOU KNOW?

You've often had the answer while listening at home much quicker than the fellow at the mike. Here's a specimen mike quiz prepared by Parks Johnson. Try it with your family and friends and figure how you would have fared if you faced the Vox Pop mike.

## QUESTIONS

1. A monkey climbing a greased pole 30 feet high goes up 3 feet in 10 seconds. He slips back 2 feet in 5 seconds. How long will it take him to reach the top?
2. Quickly: 11 is 1/6th of 3 times what number?
3. Is the half of a hundred the same as 100 divided by 1/2?
4. If you stand on your head, face to the East, in which direction is your right shoulder pointed?
5. Would it be the same if you were standing on your feet, facing East?
6. If you drive 60 miles at 20 m.p.h. going, and return at 30 m.p.h., what is your "AVERAGE" speed for the 120 miles?
7. Two candles, one will burn 4 hours and the other will burn five hours. Both are lighted simultaneously. Both are extinguished when what remains of one is exactly four times as long as what remains of the other. How long had the candles been burning?
8. If I work the first day for \$100, the second day for \$50, the third day for \$25, and so on . . . how many days will I work before I have earned \$200?
9. You have an engagement for 12 noon. Your friend phones that he must "Advance" the engagement a half hour. At what time will you meet him?
10. In 15 seconds tell me how to change a twenty-dollar bill into dollars and half-dollars so that I will have ONE MORE half-dollar than I will dollars.
11. If "This and That" plus one-half of "This and That" equals 11, how much is "This and That"?
12. If a person is consistently inconsistent, would you say that person is consistent or inconsistent?
13. If a coat is turned inside out, would the right arm still go into what was the right sleeve?
14. Would you think a "Hugger-mugger" is a loving sort of a person?
15. Which is farthest West: Detroit, Michigan—Pensacola, Florida, or Indianapolis, Indiana?
16. Honestly, DO you know how many of your own teeth you now have in your mouth?
17. A bicycle rider travels a mile in three minutes WITH the wind; he returns over the same course in four minutes AGAINST the wind. How fast could he make the mile if there were NO wind?
18. Which is the longer, a cigarette or a stick of chewing gum?
19. Is the Sahara desert flat, rolling or mountainous?
20. What abbreviations for State names make complete words?
21. I start work Monday morning at \$1 per day. You start work Tuesday morning at \$2 per day. How many days will you work before you will have earned TWICE as much as I?
22. How many times per day does the ordinary watch tick?
23. In the line: "Little Miss Muffet sat on a TUFFET" . . . what is a "tuffet"?
24. Quickly . . . count from 10 to 1, backwards.
25. How many STATES in the United States?
26. Do the words "In God we Trust" appear on all current U. S. Coins?
27. On every package of ordinary pins there appears the initials: "S. C.", "M. C." or "B. C.". What do these mean?
28. If a chicken has a gizzard what has an "Izzard"?
29. If the laundry goes out Monday morning and is returned Thursday noon, what is the minimum number of shirts a man must have in order to wear a clean shirt each morning?
30. Assume it takes 30 seconds to toast one side of a slice of bread. Now, in an old-style two-slice toaster, what's the shortest time it will take to toast THREE slices of bread on BOTH sides?

31. If Tom, Dick and Harry agree to lunch together, each bearing his own share of the cost, what about this situation. Tom brings 6 eggs; Dick brings 3 eggs; Harry brought NO eggs, but tossed 15c on the table. HOW should the 15c be divided?
32. Take an ordinary sheet of letter paper, business size. Tear it in two, and stack the halves on top of each other. Do this fifty times. How high will the stack be after the fiftieth tear and stacking?
33. A barrel has three spigots. They empty the barrel in 15, 30 and 45 minutes, respectively. If ALL are opened at the same time, how long will it take to empty the barrel?

## TRICKS TRIED AGAINST DESIGNATED TIME LIMITS:

- Say Alphabet backward in 30 seconds.  
Spell one's full name backward in 15 seconds.  
Say months of year backward in 10 seconds.
1. 6 minutes and 55 seconds; He uses 28 upward strokes or 280 seconds; 27 back strokes or 135 seconds, total 415 seconds, or 6:15.
  2. (22).
  3. No.
  4. North.
  5. No.
  6. NOT 25, but 24 miles per hour.
  7. 3 hours and 45 min.
  8. Never.
  9. Webster says "Advance to make earlier, as an event or date", so you would meet at 11:30—though personally, I would not show up until 12:30!
  10. Fourteen halves, and 13 dollars.
  11. 7-1/3, 3/2 equals 11 1/2 equals 1/3 of 11, or 3-2/3; 2/2, or "This and That" then equals 2 x 3-2/3, or 7-1/3.
  12. (1).
  13. No.
  14. Hugger-Mugger, according to Webster but "privacy or secrecy about hugging or mugging" (these days).
  15. Pensacola, Florida, farthest West.
  16. Estimated not one in a thousand knows.
  17. NOT 3 1/2 minutes, but 3 minutes, 26 seconds. You forgot the wind HELPED him only 3 of the 7 minutes, while it HINDERED him four of the seven!
  18. The stick of chewing gum.
  19. The Sahara desert contains mountains up to 10,000 feet above sea level—see Webster's Unabridged.
  20. Ark; Ill; Ida; La; Me; Mass; Miss; Neb; Nev; Kent; Wash.
  21. Never.
  22. 432,000 times per 24-hour day.
  23. An old English measure, the equivalent of half-bushel. She probably sat on the inverted receptacle.
  24. Ah, ah . . . it should be 1, 2, 3, etc.
  25. Technically, forty-four States and four "Commonwealths", viz: Kentucky, Massachusetts, Pennsylvania and Virginia.
  26. NO, they do not appear on either five-cent piece, or the Indian Head one-cent coin.
  27. Small, medium or Big CORNIN. Cornin being an old Scotch-English term meaning "Pin".
  28. Our alphabet . . . the letter "Z".
  29. Minimum of eleven shirts.
  30. 1 1/2 minutes, not 2 minutes. Toast one side of No. 1 and No. 2. Then toast final side of No. 1, and one side of No. 3; finally toast remaining side of No. 2 and 3.
  31. (TOM gets the 15c, as Harry ate 3 of Tom's 6 eggs)
  32. OVER 22 million miles high!
  33. ing will answer from 15 to 30 minutes!

## ANSWERS ('No fair peekin')

# Mr. Next Door Neighbor Takes the Air

**T**HE quiz programs mentioned on the preceding pages are but one of several popular forms of audience-participation shows. There are amateur hours, public forums and comedy and variety hours in which the listener is heard from by voice, applause and laughter. Audience-participation shows have gained tremendous popularity probably because listeners like to hear from Mr. Next Door Neighbor as well as from professional broadcasters.



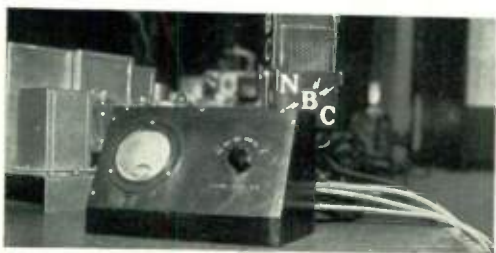
Tickets to broadcasts are in great demand



"America's Town Meeting of the Air" has been cited as the best example of freedom of the air. Here, the listener can debate with the celebrities on the platform on topics of the day. George V. Denny, Jr., is shown at the left giving the floor to a questioner who (above) is seen taking it.



Jerry Belcher (left) takes his mike right into homes of listeners. Center: Lyman Bryson (at head of table) invites "typical citizens" to dinner for the extemporaneous "People's Platform" feature of CBS. The mikes are hidden under napkins to keep the guests immune of mike-fright. Right: Major Bowes and his amateurs hold their grip on popularity. Here he is with a fellow playing two musical saws.



The applause and laughter of a typical studio audience such as the one portrayed on the right are measured by the "applause meter" shown above.







George Burns and Gracie Allen, one of the highest-paid comedy teams in the land.

## KING COMEDY STILL REIGNS

**F**ROM the very beginning of radio entertainment, comedy has never been displaced as a smash hit classification on stations' schedules. Listeners like to laugh and the broadcasters and sponsors spare no expense in obtaining the world's best funsters. Many of the comedy stars have held their popularity through the years but declare it's a tough assignment to get new material for every broadcast.



"Feud for Thought" might be the caption of the photo at the left showing Jack Benny and Fred Allen meeting. Above: "The Bee or not The Bee—that is the question" Jack seems to wonder as he raises his bow.



Left: Bob Burns, who skyrocketed to comedy stardom and who many believe comes closest to filling the philosopher-comedy role of the late Will Rogers. Above: Two of the old reliables, Al Jolson and Joe Penner. In center oval: Oliver Wakefield, the English comedian who scored favorably in his American broadcasts.





Top: Two popular comedy pairs—Marion and Jim Jordau (Fibber McGee and Molly) and (right) Stoopnagle and Budd. The latter pair, whose real names are F. Chase Taylor and Wilbur Budd Hulick, have popped up solo in recent seasons but singly or doubly, they're great fun!



Parkyakarkas (Harry Einstein), The Mad Russian (Bert Gordon) and the man who introduced both to big-time broadcasts—Eddie Cantor.



Left: Pick and Pat (Pick Malone and Pat Padgett) talk things over with their production man—Frank MacMahon.



Above: Teddy Bergman and Jack Haley who add merriment to the airwaves. Right: The Stroud Twins. Clarence brings the mike to brother Claude. The twins have scored sensationally with Charlie McCarthy.



Left: Kaltenmeyer's Kindergarten has a recess. Left to right, Professor August Kaltenmeyer (Bruce Kamman), Izzy Finkelstein (Johnny Wolf), Percy Van Schuyler (Merrill Fugit), Cornelius Callahan (Billy White) and Yohnny Yohnson (Thor Ericson). Above: Sam Hearn, better known as Schlepperman whose "Hullo. Stranzer" remark is a famous tag-line.



The movies are the source of considerable comedy material. Andy Devine and Charles Butterworth (above) are popular mike performers. Left: "Tim and Irene"—Tim Ryan and Irene Noblette, do a comedy-ventriloquist routine for the camera.



Bob Hope used the air as a short cut to screen stardom after many years on the stage. He's shown at the left with his comely nemesis, Honeychile. He's known to change his mike partners from season to season, so it's not always the same Honeychile you hear. Above: Billy House, star of "The Laugh Liner" and Cal Tenny, a youngster who, like Bob Burns, has been nominated as a successor to the late Will Rogers.



## KID STARS AND KID PROGRAMS

**A** LARGE share of each day's program schedule is devoted to features of especial appeal to youngsters. Sponsors feel that if they reach the children with good programs they are building sales for the future. Network standards for children's programs are very high and each new feature must pass a board of experts on child welfare and psychology.

Young Deanna Durbin who followed her radio success with film triumphs has earned a grown-up as well as juvenile following.



Walter Tetley, veteran child dramatic performer, who now shares time between radio and talkie mikes. Hollywood scouts signed him after his spectacular supporting roles with leading air stars. Right: Madge Tucker, director of NBC's children's features and discoverer of many talented youngsters.



Irene Wicker, radio's famous "Singing Lady". Below: Uncle Don (Donald Carney), popular children's program story-teller, singer, pianist and master-of-ceremonies.



"Jolly Bill" Steinke, conductor of a novel junior news program, and Hendrick Willem Van Loon, author and artist, who is as popular with child listeners as with grown-ups, a knack few writers or broadcasters can achieve.



## A LITTLE BIT OF EVERYTHING

**I**T'S a standard gag around the studios that whenever a sponsor has a lot of money to spend on an airshow, he auditions all types of programs and finally winds up with a band, a comedian, a vocal star, a dramatic sketch and a master-of-ceremonies, or, in other words, a variety show. It's not always a sure-fire formula but there are many exceptional hit combinations under the heading of "Variety."



Don Ameche, popular singer, actor and master-of-ceremonies of the Chase & Sanborn Hour.



Leaders of three top-notch variety shows. Left to right: Rudy Vallee, Kate Smith and Bing Crosby, all of whom are versatile entertainers as well as program directors.



It's "Good News" to many when the program of that name hits the air. Four of its headliners are shown above: Left to right: Frank Morgan, the hesitant conversationalist of the films; Hanley Stafford, the exasperated daddy of Baby Snooks; Meredith Willson, musical director, and Robert Taylor, the movie star serving as master-of-ceremonies. Right: Ben Bernie, graduated from bandsman to program "m.c." is shown with Sophie Tucker.



# THE CURTAIN RISES

**B**ROADCASTING is now an acknowledged branch of drama and the leading names of the stage and screen are attracted by its many opportunities as well as the fat salaries that go with appearance on a sponsored show. Radio drama is divided in two classes: Original and adapted plays are in one branch, and serial and sketch programs are in the second. As far as air audiences go, such names as Amos 'n' Andy and Myrt and Marge, made popular on the air, are just as much an attraction as the marquee names radio recruits from the footlights and kleiglits.



Edward G. Robinson and Claire Trevor, co-stars of the popular CBS serial "Big Town" are in the ranks of "regular" air performers, differing from most other big movie names who just appear on guest spots.



James Cagney and Noel Coward are caught by the studio candid cameraman. Circle: Irene Rich, who, in several seasons on the air, scored as favorably with listeners as she did with theatre and movie audiences.



Left to Right: Cecil B. De Mille, the movie director who added microphone triumphs to his megaphone hits as producer of the CBS "Radio Theatre" programs; Wallace Beery, an occasional guest star, and Jean Hersholt, portrayal of "Dr. Christian" in the radio series of that name.



The theatre's "royal family" is in constant air demand. Left to right: Lionel, Ethel and John Barrymore.

# BROADCASTING STATIONS of THE UNITED STATES

Call Letters	Location	Frequency (K.C.)	Power (Watts)
KABC	San Antonio, Tex.	1420	100-250
KABR	Aberdeen, S. Dak.	1420	100
KADA	Ada, Okla.	1200	100
KALB	Alexandria, La.	1210	100
KALE	Portland, Ore.	1300	1000
KAND	Corsicana, Tex.	1310	100
KANS	Wichita, Kans.	1210	100
KARK	Little Rock, Ark.	890	500-1000
KARW	Fresno, Calif.	1310	100
KASA	Elk City, Okla.	1210	100
KAST	Astoria, Ore.	1370	100
KATE	Albert Lea, Minn.	1420	250
KAWM	Gallup, N. Mex.	1500	100
KBIX	Muskogee, Okla.	1500	100
KBKR	Baker, Ore. (C.P.)	1500	100
KBND	Bend, Ore. (C.P.)	1310	100-250
KBPS	Portland, Ore.	1420	100
KBST	Big Spring, Tex.	1500	100
KBTD	Jonesboro, Ark.	1200	100
KCKN	Kansas City, Kans.	1310	100
KCMC	Texasarkana, Tex.	1420	100-250
KCMO	Kansas City, Mo.	1370	100
KCRC	Enid, Okla.	1360	250
KCRJ	Jerome, Ariz.	1310	100-250
KDAL	Duluth, Minn.	1500	100
KDB	Santa Barbara, Calif.	1500	100-250
KDFN	Casper, Wyo.	1440	500
KDKA	Pittsburgh, Pa.	980	50000
KDLR	Devils Lake, N. Dak.	1210	100
KDNC	Lewistown, Mont. (C.P.)	1200	100-250
KDNT	Denton, Tex.	1420	100
KDON	Monterey, Calif.	1210	100
KDTH	Dubuque, Iowa (C.P.)	1340	500
KDYL	Salt Lake City, Utah	1290	1000
KECA	Los Angeles, Calif.	1430	1000-5000
KEEN	Seattle, Wash.	1370	100
KEHE	Los Angeles, Calif.	780	1000-5000
KELA	Centralia, Wash.	1440	500
KELD	N. of Eldorado, Ark.	1370	100
KELO	Sioux Falls, S. Dak.	1200	100
KERN	Bakersfield, Calif.	1370	100
KEUB	Price, Utah	1420	100
KEX	Portland, Ore.	1180	5000
KFAB	Lincoln, Nebr.	770	10000
KFAC	Los Angeles, Calif.	1300	1000
KFAM	St. Cloud, Minn.	1420	100
KFAR	Fairbank, Alaska (C.P.)	610	1000
KFBB	Great Falls, Mont.	1280	1000-5000
KFBI	Abilene, Kans.	1050	5000
KFBK	Sacramento, Calif.	1490	5000
KFDW	Beaumont, Tex.	560	500-1000
KFDY	Brookings, S. Dak.	780	1000
KFEL	Denver, Colo.	920	500
KFEO	St. Joseph, Mo.	680	2500
KFGO	Boone, Iowa	1370	100
KFH	Wichita, Kans.	1300	1000-5000
KFI	Los Angeles, Calif.	640	50000
KFIO	Spokane, Wash.	1120	100
KFIZ	Fond du Lac, Wisc.	1420	100
KFJB	Marshalltown, Iowa	1200	100-250
KFJI	Klamath Falls, Ore.	1210	100
KFJM	Grand Forks, N. Dak.	1410	500-1000
KFJR	Portland, Ore.	1300	500
KFJZ	Fort Worth, Tex.	1370	100-250
KFKA	Greeley, Colo.	880	500-1000
KFKU	Lawrence, Kans.	1220	1000-5000
KFNF	Shenandoah, Iowa	680	500-1000
KFOR	Lincoln, Nebr.	1210	100-250
KFOK	Long Beach, Calif.	1250	1000
KFPL	Dublin, Tex.	1310	100-250
KFPW	Ft. Smith, Ark.	1210	100
KFPY	Spokane, Wash.	890	1000-5000
KFOO	Anchorage, Alaska	780	250
KFRG	San Francisco, Calif.	610	1000-5000
KFRD	Longview, Tex.	1370	250
KFRU	Columbia, Mo.	630	500-1000
KFSD	San Diego, Calif.	680	100-250
KFSG	Los Angeles, Calif.	1120	500-1000
KFUO	Clayton, Mo.	550	500-1000
KFVJ	Los Angeles, Calif.	1000	1000
KFVS	Cape Girardeau, Mo.	1210	100-250
KFWB	Hollywood, Calif.	950	1000-5000
KFXD	Nampa, Idaho	1200	100-250
KFXJ	Grand Junction, Colo.	1200	100-250
KFXM	San Bernardino, Calif.	1210	100
KFUO	Clayton, Mo.	550	500
KFYU	Lubbock, Tex.	1310	100-250
KFYR	Bismarck, N. Dak.	550	1000-5000
KGA	Spokane, Wash.	1470	5000
KGAR	Tucson, Ariz.	1370	100-250
KGB	San Diego, Calif.	1330	1000
KGBU	Ketchikan, Alaska	900	500
KGBX	Springfield, Mo.	1230	500
KGCA	Decorah, Iowa	1270	100
KGCI	Coeur d'Alene, Idaho (CP)	200	100
KGCU	Mandan, N. Dak.	1240	250
KGCX	Wolf Point, Mont.	1450	1000
KGDE	Fergus Falls, Minn.	1200	100-250
KGDM	Stockton, Calif.	1100	1000
KGDY	Huron, S. Dak.	1340	250

NOTE: C. P. after station location, indicates construction permit has been issued.

Call Letters	Location	Frequency (K.C.)	Power (Watts)
KGEK	Stirling, Colo.	1200	100
KGER	Long Beach, Calif.	1360	1000
KGEZ	Kalispell, Mont.	1310	100
KGFF	Shawnee, Okla.	1420	100-250
KGFJ	Brownsville, Tex.	1500	100-250
KGFJ	Los Angeles, Calif.	1200	100
KGFL	Roswell, N. Mex.	1370	100
KGFV	Kearney, Nebr.	1310	100
KGFX	Pierre, S. Dak.	630	200
KGGC	San Francisco, Calif.	1420	100
KGGF	Coffeyville, Kans.	1010	1000
KGGW	Albuquerque, N. Mex.	1230	1000
KGHF	Pueblo, Colo.	1320	500
KGHI	Little Rock, Ark.	1200	100-250
KGHL	Billings, Mont.	780	1000-5000
KGIR	Butte, Mont.	1340	1000-2500
KGIW	Alamosa, Colo.	1420	100
KGKB	Tyler, Tex.	1500	100-250
KGKL	San Angelo, Tex.	1370	100-250
KGKO	Wichita Falls, Tex.	570	250-1000
KGKY	Scottsbluff, Nebr.	1500	100-250
KGLD	Mason City, Iowa	1210	100-250
KGLU	Safford, Ariz. (C.P.)	1420	100-250
KGMB	Monolulu, Hawaii	1320	1000
KGNC	Amarillo, Tex.	1410	1000-2500
KGNF	North Platte, Nebr.	1430	1000
KGNO	Dodge City, Kans.	1340	250
KGO	San Francisco, Calif.	790	7500
KGU	Monolulu, Hawaii	750	2500
KGVJ	Greenville, Tex. (C.P.)	1200	100
KGYO	Missoula, Mont.	1260	1000
KGW	Portland, Ore.	620	1000-5000
KGY	Olympia, Wash.	1210	100
KHBC	Hilo, Hawaii	1400	250
KHBS	Oklawaha, Okla.	1210	100
KHJ	Los Angeles, Calif.	900	1000-5000
KHO	Spokane, Wash.	580	1000-5000
KHSL	Chico, Calif.	1280	250
KHUB	Watsonville, Calif.	1310	250
KICA	Clovis, N. Mex.	1370	100
KID	Idaho Falls, Idaho	1320	500-1000
KIDO	Boise, Idaho	1350	1000-2500
KIDW	Lamar, Colo.	1420	100
KIEW	Eureka, Calif.	1450	500-1000
KIEV	Glendale, Calif.	850	250
KINY	Juneau, Alaska	1310	100
KIRO	Seattle, Wash.	650	250
KIT	Yakima, Wash.	1250	250-500
KITE	Kansas City, Mo.	1530	1000
KIUL	Garden City, Kans.	1210	100
KIUN	Pecos, Tex.	1420	100
KIUP	Durango, Colo.	1370	100
KJBS	San Francisco, Calif.	1070	500
KJR	Seattle, Wash.	970	5000
KLAH	Carlsbad, N. Mex.	1210	100
KLBM	La Grande, Ore. (C.P.)	1420	100-250
KLCN	Blytheville, Ark.	1290	100
KLO	Ogden, Utah	1400	500
KLPM	Minot, N. Dak.	1240	250
KLRA	Little Rock, Ark.	1390	1000-5000
KLS	Oakland, Calif.	1280	250
KLUF	Galveston, Tex.	1370	100
KLX	Oakland, Calif.	880	1000
MLZ	Denver, Colo.	560	1000-5000
KMA	Shenandoah, Iowa	930	1000-5000
KMAC	San Antonio, Tex.	1370	100-250
KMBC	Kansas City, Mo.	950	1000-5000
KMED	Medford, Ore.	1410	250
KMJ	Fresno, Calif.	580	1000
KMLB	Monroe, La.	1200	100-250
KMMJ	Clay Center, Nebr.	740	1000
KMO	Tacoma, Wash.	1330	1000
KMOX	St. Louis, Mo.	1090	50000
KMPC	Beverly Hills, Calif.	710	500
KMTR	Los Angeles, Calif.	570	1000
KNEL	Brady, Tex.	1500	250
KNET	Palestine, Tex.	1420	100
KNOW	Austin, Tex.	1500	100
KNX	Los Angeles, Calif.	1050	50000
KOA	Denver, Colo.	830	50000
KOAC	Corvallis, Ore.	550	1000
KOAM	Pittsburg, Kans.	780	1000
KOB	Albuquerque, N. Mex.	1180	1000
KOBH	Rapid City, S. Dak.	1370	100-250
KOCA	Kilauea, Ix.	1210	100-250
KOCY	Oklahoma City, Okla.	1310	100-250
KOH	Reno, Nev.	1380	500
KOIL	Omaha, Nebr.	1260	1000-5000
KOIN	Portland, Ore.	940	1000-5000
KOKO	La Junta, Colo.	1370	100
KOL	Seattle, Wash.	1270	1000-5000
KOMA	Oklahoma City, Okla.	1480	5000
KOMO	Seattle, Wash.	920	1000-5000
KONO	San Antonio, Tex.	1370	100
KOOS	Marshfield, Ore.	1200	100-250
KORE	Eugene, Ore.	1420	100
KOTN	Pine Bluff, Ark.	1500	100
KOVV	Valley City, N. Dak.	1500	100-250
KOY	Phoenix, Ariz.	1390	1000
KPAB	Laredo, Tex. (C.P.)	1500	100-250



Call Letters	Location	Frequency Power (K.C.) (Watts)	
KPAC	Port Arthur, Tex.	1260	500
KPBM	Poplar Bluffs, Mo.(C.P.)	1310	100
KPDN	Pampa, Tex.	1310	100
KPFA	Helena, Mont.	1210	100-250
KPLC	Lake Charles, La.	1500	100-250
KPLT	Paris, Tex.	1500	250
KPMC	Bakersfield, Calif.	1650	1000
KPO	San Francisco, Calif.	680	50000
KPOF	Denver, Colo.	880	1000
KPPC	Pasadena, Calif.	1210	100
KPO	Wenatchee, Wash.	1500	100-250
KPRC	Houston, Tex.	920	1000-5000
KQV	Pittsburgh, Pa.	1380	500
KQW	San Jose, Calif.	1010	1000
KRBA	Lufkin, Tex.	1310	100
KRBC	Abilene, Tex.	1420	100-250
KRBM	Bozeman, Mont. (C.P.)	1420	100-250
KRE	Berkeley, Calif.	1370	100-250
KRGV	Weslaco, Tex.	1260	1000
KRIC	Beaumont, Tex. (C.P.)	1420	100-250
KRIS	Corpus Christi, Tex.	1330	500
KRKD	Los Angeles, Calif.	1120	500-2500
KRKO	Everett, Wash.	1370	50000
KRLC	Lewiston, Idaho	1390	250
KRLD	Dallas, Tex.	1040	10000
KRLH	Midland, Tex.	1420	100
KRMC	Jamestown, N. Dak.	1370	100-250
KRMD	Shreveport, La.	1310	100-250
KRMR	Roseburg, Ore.	1500	100-250
KRNT	Des Moines, Iowa	1320	1000-5000
KROC	Rochester, Minn.	1310	100-250
KROD	El Paso, Tex. (C.P.)	1500	100
KROW	Oakland, Calif.	930	1000
KROY	Sacramento, Calif.	1210	100
KPOA	Santa Fe, N. Mex.	1310	100
KRRV	Sherman, Tex.	1310	250
KRSC	Seattle, Wash.	1120	250
KSAC	Manhattan, Kans.	580	500-1000
KSAL	Salina, Kans.	1500	100-250
KSAM	Huntsville, Tex.(C.P.)	1500	100
KSCJ	Sioux City, Iowa	1330	1000-5000
KSD	St. Louis, Mo.	650	1000-5000
KSEI	Pocatello, Idaho	900	250-1000
KSFO	San Francisco, Calif	560	1000-5000
KSL	Salt Lake City, Utah	1130	50000
KSLM	Salem, Ore.	1370	100
KSO	Des Moines, Iowa	1430	500-2500
KSOO	Sioux Falls, S. Dak.	1110	2500
KSOR	Santa Rosa, Calif.	1310	250
KSTP	St. Paul, Minn.	1460	10000-25000
KSUB	Cedar City, Utah	1310	100
KSUN	Lowell, Ariz.	1200	100-250
KTAR	Phoenix, Ariz.	620	1000
KTAT	Fort Worth, Tex.	1240	1000
KTBC	Austin, Tex. (C.P.)	1120	1000
KTBS	Shreveport, La.	1460	1000
KTEM	Tempe, Tex.	1370	250
KTFI	Twin Falls, Idaho	1240	1000
KTHS	Hot Springs Natl.Pk.Ark.	1040	10000
KTHC	Visalia, Calif.	1190	250
KTHC	Santa Barbara, Cal.	1220	500
KTHC	Oklahoma City, Okla.	1370	100
KTDK	Modesto, Calif.	740	250
KTRB	Houston, Tex.	1290	1000-5000
KTRI	Sioux City, Iowa (C.P.)	1420	100-250
KTSA	San Antonio, Tex.	650	1000-5000
KTSM	El Paso, Tex.	1310	100-250
KTUL	Tulsa, Okla.	1400	500-1000
KTW	Seattle, Wash.	1220	1000
KUJ	Walla Walla, Wash.	1370	100
KUMA	Yuma, Ariz.	1420	100
KUOA	Siloam Springs, Ark	1260	5000
KUSD	Vermillion, S. Dak.	890	500
KUTA	Salt Lake City, Utah (CP)	1500	100
KVCV	S. of Redding, Calif.	1200	100
KVEC	San Luis Obispo, Calif.	1200	250
KVGB	Great Bend, Kans.	1370	100
KVI	Tacoma, Wash.	570	1000-5000
KVNU	Logan, Utah (C.P.)	1200	100
KVOA	Tucson, Ariz.	1260	1000
KVOD	Denver, Colo.	920	500
KVOE	Santa Ana, Calif	1500	100
KVOL	Lafayette, La	1310	100
KVOR	Tulsa, Okla.	1140	25000
KVOS	Colorado Springs, Colo	1270	1000
KVOX	Bellevue, Wash.	1200	100
KVRS	Moorhead, Minn.(C.P.)	1310	100-250
KVSO	Rock Springs, Wyo.(C.P.)	1370	100-250
KVRG	Ardmore, Okla.	1210	100-250
KWRG	Hutchinson, Kans.	1420	100
KWEW	Hobbs, N.Mex. (C.P.)	1500	100
KWG	Stockton, Calif.	1200	100
KWJB	Globe, Ariz. (C.P.)	1210	100-250
KWJJ	Portland, Ore.	1060	500
KWK	St. Louis, Mo.	1350	1000-5000
KWKH	Shreveport, La.	850	10000
KWLC	Decorah, Iowa	1270	100
KWLK	Longview, Wash.	780	250
KWNO	Winona, Minn.	1200	250
KWOC	Poplar Bluff, Mo.	1310	100

NOTE: C. P. after station location, indicates construction permit has been issued.

Call Letters	Location	Frequency Power (K.C.) (Watts)	
KWOS	Jefferson City, Mo.	1310	100
KWSC	Pullman, Wash.	1220	1000-5000
KWTN	Watertown, S. Dak.	1210	100
KWTO	Springfield, Mo.	560	5000
KWYO	Sheridan, Wyo.	1370	100-250
KXA	Seattle, Wash.	760	250-500
KXL	Portland, Ore.	1420	100-250
KXO	El Centro, Calif.	1500	100
KXOK	St. Louis, Mo. (C.P.)	1250	1000
KXRO	Aberdeen, Wash.	1310	100-250
KXYZ	Houston, Tex.	1440	1000
KYA	San Francisco, Calif.	1230	1000-5000
KYCA	Prescott, Ariz.(C.P.)	1500	100-250
KYOS	Merced, Calif.	1040	250
KYSM	Mankato, Minn. (C.P.)	1500	100-250
KYW	Philadelphia, Pa.	1020	10000
WAAB	Boston, Mass.	1410	500-1000
WAAF	Chicago, Ill.	920	1000
WAAT	Jersey City, N. J.	940	500
WAAN	Omaha, Nebr.	660	500
WABC	New York, N. Y.	860	50000
WBOO	Bangor, Me.	1200	100-250
WAB	Albany, N. Y.	1370	100-250
WABY	Waco, Tex.	1420	100
WACO	Tallmadge, Ohio	1320	1000-5000
WADC	Athens, Ga.	1450	500-1000
WAGF	Dothan, Ala.	1370	250
WAGM	Presque Isle, Me.	1420	100
WAIM	Anderson, S. C.	1200	100
WAIR	Winston-Salem, N. C.	1260	250
WALA	Mobile, Ala.	1380	500-1000
WALR	Zanesville, Ohio.	1210	100
WAML	Laurel, Miss.	1310	100-250
WAPI	Birmingham, Ala.	1140	5000
WAPO	Chattanooga, Tenn.	1420	100-250
WARD	Brooklyn, N. Y.	1400	500
WASH	Grand Rapids, Mich.	1270	500
WATL	Atlanta, Ga.	1370	100-250
WATR	Waterbury, Conn.	1190	100
WAYE	Louisville, Ky.	940	1000
WAYZ	Zarephath, N. J.	1350	500-1000
WAYX	Waycross, Ga.	1200	100-1000
WAZL	Hazleton, Pa.	1420	100
WBAA	West Lafayette, Ind.	890	500-1000
WBAL	Baltimore, Md.	1080	10000
WBAP	Fort Worth, Tex.	800	50000
WBAX	Wilkes-Barre, Pa.	1210	100
WBBC	Brooklyn, N. Y.	1400	500
WBBL	Richmond, Va.	1210	100
WBDM	Chicago, Ill.	770	50000
WBRR	Brooklyn, N. Y.	1300	1000
WBZ	Ponca City, Okla.	1200	100-250
WBGM	Bay City, Mich.	1410	500-1000
WBEN	Buffalo, N. Y.	900	1000-6000
WBEO	Marquette, Mich	1310	100
WBHP	Huntsville, Ala.	1200	100
WBIG	Greensboro, N.C.	1440	1000
WBIL	New York, N. Y.	1100	5000
WBKL	Clarksburg, W. Va.	1370	100
WBLY	Lima, Ohio	1210	100
WBNO	New Orleans, La.	1200	100
WBNS	Columbus, Ohio	1430	500-1000
WBXN	New York, N. Y.	1350	1000
WBXY	Buffalo, N. Y.	1370	100-250
WABC	(See WABC-WBOO)		
WBOW	Terre Haute, Ind.	1310	100-250
WBRR	Red Bank, N. J.	1210	100
WBRC	Birmingham, Ala.	930	1000-5000
WBRE	Wilkes-Barre, Pa.	1310	100
WBRL	Pittsfield, Mass.	1310	100-250
WBRY	Waterbury, Conn.	1630	1000
WBST	Charlotte, N. C.	1080	50000
WBTV	Danville, Va.	1370	100-250
WBZ	Boston, Mass.	990	50000
WBZ	Boston, Mass.	990	1000
WCAD	Canton, N. Y.	1220	500
WCAE	Pittsburgh, Pa.	1220	1000-5000
WCAL	Northfield, Minn.	1250	1000-2500
WCAM	Camden, N. J.	1280	500
WCAO	Baltimore, Md.	600	500-1000
WCAP	Asbury Park, N. J.	1280	500
WCAT	Rapid City, S. Dak.	1200	100
WCAU	Philadelphia, Pa.	1170	50000
WCAX	Burlington, Vt.	1200	100-250
WCAY	Carthage, Ill.	1070	100
WCBA	Allentown, Pa.	1440	500
WCBD	Chicago, Ill.	1080	5000
WCBM	Baltimore, Md.	1370	100-250
WCBS	Springfield, Ill.	1420	100-250
WCCC	Minneapolis, Minn.	810	50000
WCFL	Chicago, Ill.	970	5000
WCBS	Charleston, W. Va.	580	500-1000
WCHV	Charlottesville, Va.	1420	100-250
WCKY	Covington, Ky.	1490	10000
WCLE	Cleveland, Ohio.	610	500
WCLO	Janesville, Wisc.	1200	100-250
WCMS	Joilet, Ill.	1310	100
WCMI	Ashland, Ky.	1310	100-250
WCNW	Brooklyn, N. Y.	1500	100-250

Call Letters	Location	Frequency Power (K.C.) (Watts)		Call Letters	Location	Frequency Power (K.C.) (Watts)	
WCOA	Pensacola, Fla.	1340	500-1000	WHBI	Newark, N. J.	1250	1000-2500
WCOC	Meridian, Miss.	880	500-1000	WHBL	Sheboygan, Wisc	1300	250
WCOL	Columbus, Ohio	1210	100	WHBQ	Memphis, Tenn.	1370	100
WCOP	Boston, Mass.	1120	500	WHBU	Anderson, Ind.	1210	100-250
WCOU	Lewistown, Me. (C.P.)	1210	100	WHBY	Green Bay, Wisc	1200	100-250
WCOV	Montgomery, Ala. (C.P.)	1210	100	WHDF	Calumet, Mich.	1370	100-250
WCPO	Cincinnati, Ohio	1200	100-250	WHDH	Boston, Mass.	930	1000
WCRW	Chicago, Ill.	1210	100	WHDL	Olean, N. Y.	1400	250
WCSC	Charleston, S. C.	1360	500-1000	WHEB	Portsmouth, N.H.	740	250
WCSS	Portland, Me.	940	1000-2500	WHEC	Rochester, N.Y.	1430	500-1000
WDAE	Tampa, Fla.	1220	1000-5000	WHEF	Kosciusko, Miss.	1500	100-250
WDAF	Kansas City, Mo.	610	1000-5000	WHFC	Cicero, Ill.	1420	100-250
WDAH	El Paso, Tex.	1310	100-250	WHIO	Dayton, Ohio	1260	1000-5000
WDAS	Philadelphia, Pa.	1370	100-250	WHIP	Hammond, Ind.	1480	5000
WDAY	Fargo, N. Dak.	940	1000-5000	WHJS	Bluefield, W. Va.	1410	500-1000
WDBJ	Roanoke, Va.	930	1000-5000	WHJB	Greensburg, Pa.	620	250
WDBO	Orlando, Fla.	560	1000-5000	WHK	Cleveland, Ohio	1390	1000-2500
WDEL	Wilmington, Del.	1120	250-500	WHKC	Columbus, Ohio	640	500
WDEV	Waterbury, Vt.	550	500	WHLB	Virginia, Minn.	1370	100-250
WDGY	Minneapolis, Minn.	1180	1000-5000	WHLS	Port Huron, Mich. (CP)	1370	250
WDNC	Durham, N.C.	1000	100	WHN	New York, N. Y.	1010	1000-5000
WDOD	Chattanooga, Tenn.	1280	1000-5000	WHO	Des Moines, Iowa	1000	50000
WDRG	Hartford, Conn.	1300	1000-5000	WHOM	Jersey City, N.J.	1450	250
WDSM	Superior, Wisc. (C.P.)	1200	100	WHP	Harrisburg, Pa.	1430	500-1000
WDSU	New Orleans, La.	1250	1000	WHBA	Madison, Wisc.	1280	1000-5000
WDSW	Champaign, Ill.	1370	100-250	WHBG	Glenside, Pa.	970	100
WDZ	Tuscola, Ill.	1020	250	WHBJ	Jackson, Mich.	1370	100-250
WEAF	New York, N. Y.	660	50000	WHBU	Poyntette, Wisc.	1210	100-250
WEAU	Providence, R. I.	780	1000-5000	WHBW	Topeka, Kans.	580	1000-5000
WEBC	Eau Claire, Wisc.	1050	1000	WHBX	Utica, N. Y.	1200	100-250
WEBO	Duluth, Minn.	1290	1000-5000	WICA	Ashtabula, Ohio	940	250
WEBO	Harrisburg, Ill.	1210	100-250	WICC	Bridgeport, Conn	600	500-1000
WEBR	Buffalo, N. Y.	1310	100-250	WILL	St. Louis, Mo.	1200	100-250
WEBC	Chicago, Ill.	1210	100	WILL	Urbana, Ill.	580	1000
WEED	Rocky Mount, N. C.	1420	100-250	WILM	Wilmington, Del.	1420	100
WEEL	Wind, Mass.	590	1000-5000	WIND	Gary, Ind.	560	1000-5000
WEEU	Reading, Pa.	830	1000	WINS	New York, N. Y.	1180	1000
WEHI	New Haven, Conn.	900	500	WIOD			
WEHL	Battle Creek, Mich.	1420	100	WMBF	Miami, Fla.	610	1000
WEHP	Milwaukee, Wisc.	1310	100	WIP	Philadelphia, Pa.	610	1000
WENR	Chicago, Ill.	870	50000	WIRE	Indianapolis, Ind.	1400	1000-5000
WENY	Elmira, N.Y. (C.P.)	1200	250	WIS	Columbia, S.C.	580	1000-5000
WEOA	Evansville, Ind.	1370	100-250	WISN	Milwaukee, Wisc.	1120	250-1000
WESG	Elmira, N. Y.	1040	1000	WJAC	Johnstown, Pa.	1310	100-250
WEST	Easton, Pa.	1200	100-250	WJAG	Norfolk, Nebr.	1060	1000
WEVD	New York, N.	1300	1000	WJAR	Providence, R. I.	890	1000-5000
WEW	St. Louis, Mo.	760	1000	WJAS	Pittsburgh, Pa.	1290	1000-5000
WEXL	Royal Oak, Mich.	1310	50	WJAX	Jacksonville, Fla.	900	1000-5000
WFAA	Dallas, Tex.	800	50000	WJBC	Bloomington, Ill.	1200	100-250
WFAB	New York, N. Y.	1300	1000	WJBK	Detroit, Mich.	1500	100-250
WFAM	South Bend, Ind.	1200	100	WJBL	Decatur, Ill.	1200	100
WFAS	White Plains, N. Y.	1210	100	WJBO	Baton Rouge, La.	1120	500
WFBC	Greenville, S.C.	1300	1000-5000	WJBW	New Orleans, La.	1200	100
WFBG	Altoona, Pa.	1310	100	WJBY	Gadsden, Ala.	1210	100-250
WFBL	Syracuse, N.Y.	1360	1000-5000	WJDX	Jackson, Miss.	1270	1000-5000
WFBM	Indianapolis, Ind.	1230	1000-5000	WJED	Hagerstown, Md.	1210	50-100
WFBR	Baltimore, Md.	1270	500-1000	WJHL	Johnson City, Tenn. (CP)	1200	100-250
WFDF	Flint, Mich.	1310	100	WJIM	Lansing, Mich.	1210	100-250
WFEA	Manchester, N.H.	1340	500-1000	WJJD	Chicago, Ill.	1130	20000
WFIL	Philadelphia, Pa.	560	500-1000	WJMC	Rice Lake, Wisc. (C.P.)	1210	250
WFLA	Tampa, Fla.	620	1000-5000	WJMS	Ironwood, Mich.	1420	100
WFMD	Frederick, Md.	900	500	WJNO	West Palm Beach, Fla.	1200	100-250
WFMJ	Youngstown, Ohio	1420	100	WJR	Detroit, Mich.	750	50000
WFOR	Hattiesburg, Miss.	1370	100	WJRD	Tuscaloosa, Ala.	1200	100-250
WFOY	St. Augustine, Fla.	1210	100-250	WJSV	Washington, D. C.	1460	10000
WFTC	Kinston, N. C.	1200	100-250	WJTN	Jamestown, N. Y.	1210	100-250
WGAL	Lancaster, Pa.	1500	100-250	WJW	Akron, Ohio.	1210	100-250
WGAN	Portland, Me. (C.P.)	640	500	WJZ	New York, N. Y.	760	50000
WGAR	Cleveland, Ohio	1450	500-1000	WKAO	San Juan, Puerto Rico	1240	1000
WGAU	Athens, Ga.	1310	100-250	WKAR	East Lansing, Mich.	850	1000
WGBB	Freeport, N. Y.	1210	100	WKAT	Miami Beach, Fla.	1500	100
WGBF	Evansville, Ind.	630	500-1000	WKBB	East Dubuque, Ill	1500	100-250
WGBI	Scranton, Pa.	880	500-1000	WKBN	La Crosse, Wisc.	1380	100
WGCM	Mississippi City, Miss.	1210	100-250	WKBN	Youngstown, Ohio	570	500
WGES	Chicago, Ill.	1360	500-1000	WKBO	Harrisburg, Pa.	1200	100-250
WGH	Newport News, Va.	1310	100-250	WKBV	Richmond, Ind.	1500	100
WGIL	Galesburg, Ill. (C.P.)	1500	250	WKBW	Buffalo, N.Y.	1480	5000
WGVV	Charleston, W.Va. (C.P.)	1500	100	WKBY	Muskegon, Mich.	1500	100-250
WGL	Ft. Wayne, Ind.	1370	100	WKEU	Griffin, Ga.	1500	100
WGN	Chicago, Ill.	720	50000	WKOK	Sunbury, Pa.	1210	100
WGNV	Newburgh, N. Y.	1210	100	WKRC	Cincinnati, Ohio	550	1000-5000
WGNC	Albany, Ga.	1420	100	WKST	New Castle, Pa. (C.P.)	1250	250
WGR	Buffalo, N. Y.	550	1000-5000	WKY	Oklahoma City, Okla.	980	1000-5000
WGRG	New Albany, Ind	1370	250	WKZO	Kalamazoo, Mich.	590	1000
WGRM	Grenada, Miss.	1210	100	WLAK	Nashville, Tenn.	1470	5000
WGST	Atlanta, Ga.	890	1000-5000	WLAK	Lakeland, Fla.	1310	100
WGTM	Wilson, N. C.	1310	100	WLAP	Lexington, Ky.	1420	100-250
WGVA	Indianapolis, Ind. (CP)	1050	1000	WLAW	Lawrence, Mass.	680	1000
WGEN	Schenectady, N. Y.	790	5000	WLBC	Minneapolis, Minn	1250	1000
WHA	Madison, Wisc.	940	5000	WLBC	Muncie, Ind.	1310	100-250
WHA1	Greenfield, Mass.	1210	250	WLBI	Stevens Point, Wisc	900	5000
WHA1	Saginaw, Mich. (C.P.)	950	500	WLBI	Bangor, Me.	620	500-1000
WHAM	Rochester, N. Y.	1150	50000	WLBZ	Erie, Pa.	1420	100-250
WHAS	Louisville, Ky.	820	50000	WLEU	Lowell, Mass.	1370	100-250
WHAT	Philadelphia, Pa.	1310	100	WLHU	Middleboro, Ky. (C.P.)	1210	100-250
WHAZ	Troy, N. Y.	1300	1000	WLHN	Laconia, N.H.	1310	100
WHB	Kansas City, Mo.	960	1000	WLS	Chicago, Ill.	870	50000
WHBB	Selma, Ala.	1500	100	WLTH	Brooklyn, N.Y.	1400	500
WHBC	Canton, Ohio	1200	100	WLVA	Richburg, Va.	1200	100-250
WHBF	Rock Island, Ill.	1210	100-250	WLW	Cincinnati, Ohio	700	50000

NOTE: C. P. after station location, indicates construction permit has been issued.



Call Letters	Location	Frequency Power (K.C.) (Watts)		Call Letters	Location	Frequency Power (K.C.) (Watts)	
WMAL	Washington, D.C.	630	250-500	WSAR	Fall River, Mass.	1450	1000
WMAQ	Chicago, Ill.	670	50000	WSAU	Wausau, Wisc.	1370	100
WMAS	Springfield, Mass.	1420	100-250	WSAV	Savannah, Ga.	1310	100
WMAZ	Macon, Ga.	1180	1000	WSAY	Rochester, N.Y.	1100	100
WMBC	Detroit, Mich.	1420	100-250	WSAZ	Huntington, W.Va.	1190	1000
WVBD	Peoria, Ill.	1440	1000-5000	WSB	Atlanta, Ga.	740	50000
WMBF-WID	(See WID-WMBF)			WSBC	Chicago, Ill.	1210	100-250
WMBG	Richmond, Va.	1350	500	WSBT	South Bend, Ind.	1360	500
WMBH	Joplin, Mo.	1420	100-250	WSFA	Montgomery, Ala.	1410	500-1000
WMBI	Chicago, Ill.	1080	5000	WSGN	Birmingham, Ala.	1310	100-250
WMBO	Auburn, N.Y.	1310	100	WSIX	Nashville, Tenn.	1210	100-250
WMBR	Jacksonville, Fla.	1370	100-250	WSJS	Winston-Salem, N.C.	1310	100
WMBS	Uniontown, Pa.	1420	250	WSLI	Jackson, Miss. (C.P.)	1420	100-250
WMC	Memphis, Tenn.	780	1000-5000	WSM	Nashville, Tenn.	650	50000
WMCA	New York, N.Y.	570	1000	WSMB	New Orleans, La.	1320	1000
WMEX	Boston, Mass.	1500	100-250	WSMK	Dayton, Ohio	1380	200
WMFO	Wilmington, N.C.	1370	100	WSNJ	Bridgeton, N.J.	1210	100
WMFF	Plattsburg, N.Y.	1310	100-250	WSOC	Charlotte, N.C.	1210	100-250
WMFG	Hibbing, Minn.	1210	100-250	WSPA	Spartanburg, S.C.	920	1000
WMFJ	Daytona Beach, Fla.	1420	100	WSPD	Toledo, Ohio	1340	1000-5000
WMFO	Decatur, Ala.	1370	100	WSPR	Springfield, Mass.	1140	500
WMFR	High Point, N.C.	1200	100	WSTP	Salisbury, N.C. (C.P.)	1500	100-250
WMIN	St. Paul, Minn.	1370	100-250	WSUI	Iowa City, Iowa	880	500-1000
WMNN	Fairmont, W. Va.	890	500-1000	WSUN	St. Petersburg, Fla.	620	1000-5000
WMPC	Lapeer, Mich.	1200	100-250	WSVA	Harrisonburg, Va.	550	500
WMPS	Memphis, Tenn.	1430	500-1000	WSVS	Buffalo, N.Y.	1370	50
WMSD	Sheffield, Ala.	1420	100	WSYB	Rutland, Vt.	1500	100
WMT	Cedar Rapids, Iowa	600	1000-5000	WSYR-WSYU	Syracuse, N.Y.	570	1000
WNAC	Boston, Mass.	1230	1000-5000	WTAD	Quincy, Ill.	900	1000
WNAD	Norman, Okla.	1010	1000	WTAG	Worcester, Mass.	580	1000
WNAX	Yankton, S. Dak.	570	1000-5000	WTAL	Tallahassee, Fla.	1310	100-250
WNBC	New Britain, Conn.	1380	250	WTAM	Cleveland, Ohio	1070	50000
WNBF	Binghamton, N.Y.	1500	100-250	WTAC	Green Bay, Wisc.	1330	1000
WNBH	New Bedford, Mass.	1310	100-250	WTAR	Norfolk, Va.	780	1000
WNBX	Springfield, Vt.	1260	1000	WTAW	College Station, Tex.	1120	500
WNBZ	Saranac Lake, N.Y.	1290	100	WTAX	Springfield, Ill.	1210	100
WNEL	San Juan, Puerto Rico	1290	1000-2500	WTBO	Cumberland, Md.	800	250
WNEW	New York, N.Y.	1250	1000-2500	WTCT	Minneapolis, Minn.	1250	1000-5000
WNLC	New London, Conn.	1500	100	WTEL	Philadelphia, Pa.	1310	100
WNOX	Knoxville, Tenn.	1010	1000-5000	WTHT	Hartford, Conn.	1200	100
WNYC	New York, N.Y.	810	1000	WTIC	Hartford, Conn.	1060	50000
WQAI	San Antonio, Tex.	1190	50000	WTJS	Jackson, Tenn.	1310	100-250
WOC	Davenport, Iowa	1370	100-250	WTWJ	Milwaukee, Wisc.	620	1000-5000
WOCB	Barnstable Twp., Mass. (C.P.)	1210	100-250	WTWV	E. St. Louis, Ill.	1500	100-250
WOI	Ames, Iowa	640	5000	WTNJ	Trenton, N.J.	1280	500
WOKO	Albany, N.Y.	1430	500-1000	WTOC	Savannah, Ga.	1260	100
WOL	Washington, D.C.	1310	100	WTOI	Toledo, Ohio	1200	100
WOLS	Florence, S.C.	1200	100	WTRC	Elkhart, Ind.	1310	100-250
WOMI	Owensboro, Ky.	1500	100-250	WVFW	Brooklyn, N.Y.	1400	500
WOMT	Manitowoc, Wisc.	1210	100	WWAE	Hammond, Ind.	1200	100
WOOD	Grand Rapids, Mich.	1270	500	WWJ	Detroit, Mich.	920	1000-5000
WOPI	Bristol, Tenn.	1500	100	WWL	New Orleans, La.	850	10000
WOR	Newark, N.J.	710	50000	WWNC	Asheville, N.C.	570	1000
WORC	Worcester, Mass.	1280	500	WWRL	Woodsie, N.Y.	1500	100-250
WORK	York, Pa.	1320	1000	WWSV	Pittsburgh, Pa.	1500	100-250
WORL	Boston, Mass.	920	500	WWVA	Wheeling, W.Va.	1160	5000
WOSU	Columbus, Ohio	570	750-1000	WXYZ	Detroit, Mich.	1240	1000
WOV	New York, N.Y.	1130	1000				
WOV	Omaha, Nebr.	590	1000-5000				
WOWO	St. Wayne, Ind.	1160	10000				
WPAD	Paduac, Ky.	1420	100-250				
WPAP	Parkersburg, W. Va.	1420	100				
WPAX	Thomasville, Ga.	1210	100				
WPAY	Portsmouth, Ohio	1370	100				
WPEN	Philadelphia, Pa.	920	250-500				
WPG	Atlantic City, N.J.	1100	5000				
WPIC	Sharon, Pa. (C.P.)	780	250				
WPRA	Mayaguez, Puerto Rico	1370	100-250				
WPRO	Providence, R.I.	630	500-1000				
WPRP	Ponce, Puerto Rico	1420	100-250				
WPTF	Raleigh, N.C.	680	5000				
WQAM	Miami, Fla.	560	1000				
WQAN	Scranton, Pa.	880	500-1000				
WQBC	Vicksburg, Miss.	1360	1000				
WODW	St. Albans, Vt.	1390	1000				
WOXR	New York, N.Y.	1550	1000				
WRAC	Williamsport, Pa.	1370	100-250				
WRAL	Raleigh, N.C. (C.P.)	1210	100-250				
WRAY	Reading, Pa.	1310	100				
WRAX	Philadelphia, Pa.	920	250-500				
WRBL	Columbus, Ga.	1200	100-250				
WRC	Washington, D.C.	950	500-1000				
WRDO	Augusta, Me.	1370	100				
WRDW	Augusta, Ga.	1500	100-250				
WREC	Memphis, Tenn.	600	1000-5000				
WREN	Lawrence, Kans.	1220	1000-5000				
WRGA	Rome, Ga.	1500	100-250				
WRJN	Racine, Wisc.	1370	100-250				
WRNL	Richmond, Va.	880	500				
WROK	Richmond, Ill.	1410	500-1000				
WROL	Knoxville, Tenn.	1310	100-250				
WRR	Dallas, Tex.	1280	500				
WRTO	Richmond, Va.	1500	100				
WRUF	Gainesville, Fla.	830	5000				
WRVA	Richmond, Va.	1110	5000				
WSAI	Cincinnati, Ohio	1330	1000-5000				
WSAJ	Grove City, Pa.	1310	100				
WSAL	Salisbury, Md.	1200	250				
WSAN	Allentown, Pa.	1440	500				

NOTE: C. P. after station location, indicates construction permit has been issued.

#### CANADIAN BROADCAST STATIONS

CBF	Montreal, Que.	910	50000
CEL	Toronto, Ont.	940	50000
CEB	LaPrairie, Que.	1310	500
CBO	Waltham, Ont.	980	1000
CBR	Lulu Island, B.C.	1100	5000
CBF	Calgary, Alta.	880	1000
CFBS	Flin Flon, Man.	1320	100
CFCE	Montreal, Que.	600	500
CFCH	New York, Ont.	890	100
CFCH	Strathmore, Alta.	1010	10000
CFCO	Chatham, Ont.	630	100
CFCT	Esquimaux District, B.C.	1450	500
CFCT	Montreal, Que.	6000	75
CFCT	Charlottetown, P.E.I.	630	1000
CFGP	Grande Prairie, Alta.	1200	100
CFJC	North Kamloops, B.C.	880	1000
CFJC	Prescott, Ont.	930	100
CFNR	Fredericton, N.B.	550	500-1000
CFPL	London, Ont.	730	100
CFPR	Prince Rupert, B.C.	580	50
CFPS	Saskatoon, Sask.	940	1000
CFRB	King, Ont.	690	10000
CFRC	Kingston, Ont.	1510	100
CFRN	Edmonton, Alta.	960	100
CFRN	King, Ont.	6770	1000
CFVP	Strathmore, Alta.	6030	100
CHAB	Woose Jaw, Sask.	1200	100-250
CHCK	Charlottetown, P.E.I.	1210	100
CHGS	Summerside, P.E.I.	1450	50
CHLN	Three Rivers, P.Q.	1420	100
CHLP	Montreal, Que.	1120	100
CHLT	Sherbrooke, Que.	1210	100
CHML	Salisbury, Ont.	1010	100
CHNC	New Carlisle, Que.	960	1000
CHNS	Bedford, N.S.	630	1000
CHNS	Bedford, N.S.	6130	500
CHRC	Quebec, P.Q.	580	100
CHSJ	St. John, N.B.	1120	100
CHWK	Orillia, Ont.	780	100
CJAT	Trail, B.C.	910	1000
CJBR	Sacre-Coeur, P.C.	1030	1000
CJCA	Belmont View, Alta.	730	1000
CJCB	Sydney, N.S.	1240	1000
CJCI	Calgary, Alta.	690	100
CJCS	Stratford, Ont.	1210	50
CJCU	Albany, N.W.T.	1210	100
CJCY	Sydney, N.S.	6610	1000
CJGX	Yorkton, Sask.	1390	100
CJHS	Sault Ste. Marie, Ont.	1500	100
CJHL	Kirkland Lake, Ont.	1210	100
CJIS	Yarmouth, N.S.	1310	100
CJOC	Lethbridge, Alta.	960	100
CJOD	Sea Island, B.C.	800	500
CJRC	Middechurch, Man.	630	1000

## DON'T BE YOURSELF!

**A** FEW radio entertainers have proved that it pays to follow that slogan. In recent seasons, persons who could do exceptional stunts with their voices won lucrative long-time contracts. Ventriloquism, mimicry and other vocal oddities, all of which were once thought unsuitable for the air, are now acknowledged smash-hit formulas.



That impish but lovable Charlie McCarthy and his master (?), Edgar Bergen, try out a script. Below: Bergen shows that even a ventriloquist's dummy demands a wardrobe suited to his status.



Fanny Brice, veteran of the musical comedy and vaudeville stages, in her Baby Snooks characterization—a radio sensation.



Left: Walt Disney, creator of Mickey Mouse, Donald Duck and numerous other imaginary cartoon characters who magically come to life on air programs. Center: Arthur Boran, a first-rate radio mimic who can impersonate the air's "great." Right: Tommy Riggs whose vocal creation of Betty Lou brought him nation-wide fame.





How a radio play takes the air is demonstrated by these four views from NBC's "Spy at Large" series. Upper left: The first script reading. Lines are ironed out and the cast learns story. Upper right: Director Joseph Bell gives some pointers to actresses Consuelo Lembke, Eileen Burns and Elena Karan. Lower left: The dress rehearsal with Miss Burns, Eric Dressler and Miss Lembke going through their paces. Lower right: On the air! Miss Lembke is shown reading the opening lines.



Two popular series of long standing are pictured above. Left: Four members of the cast of "One's Man's Family" which has been a radio hit since 1932. Photo shows Minetta Ellen (Fanny Barbour) with Bernice Berwin (Hazel) at left; Kathleen Wilson (Claudia) at right, and Winifred Wolfe (Teddy) below. Right: The popular team of Lum and Abner in make-up. Chet Lauck plays Lum and Norris Goff portrays Abner.



Amos 'n' Andy are shown with the only woman—and only third person—in their cast, Madaline Lee. The pair, Charles Correll (Amos) and Freeman Gosden (Andy) enact all the other characters themselves. Right: Myrt and Marge. (Myrtle Vail and Donna Damers!).



## ON WITH THE DANCE!

**W**HETHER personal preferences go to "swing" or "sweet" music, dance music is a "must" on most listeners' tuning schedules. There are scores of headlining bands and space permits only some of the representative ones to be pictured on these two pages. Most dance bands attempt to establish an individual style to be distinctive and the demand for special arrangements of popular tunes keeps the arrangers working day and night. Many bands have stellar vocalists and instrumental soloists to enhance their offerings.



Fred Waring, head of the Pennsylvanians, a pioneer radio band. Choral offerings are his dish. Right: They don't usually call him the "king of jazz" any more but there's no doubt that he's still its master — Paul Whiteman.



Phil Spitalny and his All-Girl Orchestra, a radio act that's in great demand for stage appearances. Right: Raymond Paige. Below, left: Guy Lombardo (seated) and his versatile brothers, Leibert, Carmen and Victor. Below, right: B. A. Rolfe, radio old-timer who's still a radio big-timer.







Vincent Lopez, Peter Van Steeden and Robert Armbruster, three ace baton-wavers.



The Dorsey Brothers used to jointly conduct their own orchestra under that name but now they have separate aggregations—both highly successful. Jimmy Dorsey is at the left and Brother Tommy at the right.



Al Goodman, George Olsen and Joe Rines, all stellar bandmen.



Left to Right: Horace Heidt, conductor of the Brigadiers, Gene Krupa, the drummer, who left Benny Goodman to head his own band, and Richard Himber, a consistent broadcaster.

## BEAUTY AND THE MIKE

**R**ADIO vies with the stage and screen in the beauty of its female stars. In the long run, radio even goes the other entertainment mediums one better; the microphone drafts the "best-lookers" as well as the best talent from the stage and cinema. And the high standard of mike beauty has brought about many screen offers for the broadcasting damsels. With television in the offing, you will soon enjoy hearing as well as seeing these decorative persons.



Elaine Bassett, an NBC dramatic performer. Left: Betty Lou Gerson, NBC actress and Alice Frost, heard on both CBS and NBC in leading dramatic roles.



Left to right: Olga Andre, NBC songstress frequently featured on shortwave programs because of her ability as a linguist; Virginia Verrill, vocalist presented on both networks and the Lane Sisters—Priscilla and Rosemary, whose air work brought about a Hollywood cinema career. Below, left to right: Wendy Barrie, who reversed the Lane Sisters formula by coming to the air from the screen; Maxine, vocalist with Phil Spitalny's All-Girl Orchestra, and Bess Johnson who plays a featured role in the CBS series "Hilltop House."







Dorothy Lamour, singing co-star of the NBC Chase & Sanborn Hour, whose picture on magazine covers is said to have nearly established a quantity record for radio artists, Ruth Warrick (right), CBS actress, shows the photographer her idea of keeping cool during a broadcast.



Betty Caine and Helen Walpole, NBC actresses, who are undoubtedly adept on *figures of speech*.



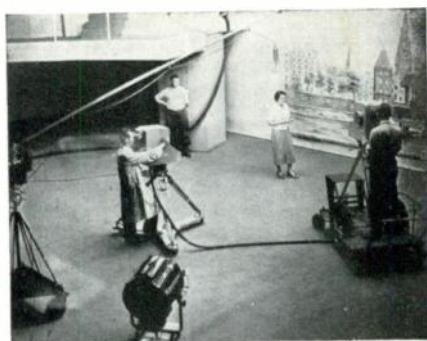
Gale Page, NBC singer and actress, who also used the mike as a short-cut to Hollywood fame. Right: Templeton Fox, NBC actress.



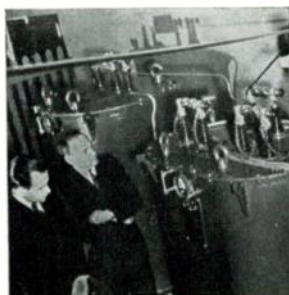
The mirror-lid of this television receiver reflects a picture measuring 12 by 14 inches off a vertically-mounted cathode-ray tube. This set was introduced to the Berlin market and is similar in many respects to models developed in American laboratories.

## THERE ARE ADDED THRILLS IN SIGHT

**A**ND sight, of course, means television. The great progress in the video art here and abroad indicates that regular television programs should be available in many parts of the country at an early date. It is certain that the new art will win wide acceptance on a mass scale and that many of the current crop of radio stars will be drafted for the television camera along with stars of the stage and screen.



No, this is not a Hollywood movie set. It is a typical European television studio. Left: This photograph reveals the excellent detail of a projection television image on a theatre-size screen ten feet high and twelve feet wide.



Preparations are under way for the introduction of public-participating television in many American cities. Gilbert Seldes and Peter C. Goldmark, respectively television program director and television engineer of the Columbia Broadcasting System, are seen at the left at the scanning panel of the network's New York video station. In the center photo they are inspecting one of ten giant transformers for the new Chrysler Building sight-and-sound station. A Columbia television studio setting of many years ago is shown at the right. The image was virtually confined to "head and shoulders" in those days. Today, however, the television camera can pick up wide-angle scenes in the manner of a movie camera.



# TELEVISION BROADCAST STATIONS

LICENSEE AND LOCATION	CALL LETTERS	FREQUENCY (kc) OR GROUP*	POWER		EMISSION
			VISUAL	AURAL	
Columbia Broadcasting System, Inc., New York, N. Y.	W2XAX	B, C	50w C. P. 7500w	7500w	A4 A3
Don Lee Broadcasting System, Los Angeles Calif.	W6XAO	B, C	150w C. P. 1kw	150w	A3, A4
Farnsworth Television Incorporated of Pa., Springfield, Pa.	W3XPF	B, C	4kw	1kw	A3, A4 (C. P. only)
First National Television, Inc., Kansas City, Mo.	W9XAL	B, C	300w	150w	A3, A4
General Television Corporation, Boston, Mass.	W1XG	B, C	500w		A4
The Journal Company, Milwaukee, Wisconsin.	W9XD	B, C	500w		A4
Kansas State College of Agriculture & Applied Science, Manhattan, Kansas.	W9XAK	A	125w	125w	A3, A4 & Special
National Broadcasting Co., Inc., New York, N. Y.	W2XBS	B, C	12kw	15kw	A3, A4
National Broadcasting Co., Inc., Portable (Camden, N. J. & New York, N. Y.)	W2XBT	D (92,000 & 175000-180000)	400w	100w	A1, A2, A3, A4 & Special (C. P. only)
Philco Radio & Television Corp., Philadelphia, Pa.	W3XE	B, C	10kw	10kw	A3, A4
Philco Radio & Television Corp., Philadelphia, Pa.	W3XP	D (204000-210000)	15w		A4 & Special (C. P. only)
Purdue University, West Lafayette, Ind.	W9XG	A	1500w		A4
Radio Pictures, Inc., Long Island City, N. Y.	W2XDR	B, C	1kw	500w	A3, A4
RCA Manufacturing Co., Inc., Portable (Bldg. No. 8 of Camden Plant)	W3XAD	D (124000 to 130000)	500w	500w	A3, A4
RCA Manufacturing Co., Inc., Camden, N. J.	W3XEP	B, C	30kw	30kw	A3, A4
RCA Manufacturing Co., Inc., Portable-Mobile	W10XX	B, C	50w	50w	A3, A4
The Sparks-Withington Company, Jackson, Michigan.	W8XAN	B, C	100w	100w	A3, A4
University of Iowa, Iowa City, Iowa.	W9XK	A	100w		A4
University of Iowa, Iowa City, Iowa.	W9XUI	B, C	100w		A4
Dr. George W. Young, Minneapolis, Minnesota	W9XAT	B, C	500w		A4

## \*FREQUENCY GROUPS

Group A	Group B	Group C	Group D
2000 to 2100 kc	42,000 to 56,000 kc	60,000 to 86,000 kc	Any 6,000 kc frequency band above 110,000 kc excluding 400,000 to 401,000 kc.

## THE SERIOUS SIDE OF RADIO MUSIC

**I**N this age of swing music and such dances as the Big Apple, Lambeth Walk and Yam, radio renditions are by no means confined to jitterbugs' tastes. The serious side of music is not neglected. The best symphony concerts, operas and instrumental and vocal solo bits are offered on radio schedules. Sponsors and networks spare no expense to obtain the best names in the music world.



Lily Pons, the world-famed coloratura, and her noted conductor-husband, Andre Kostelanetz.



There's beauty on the classical programs, too, as these views of Gladys Swarthout and Grace Moore adequately prove.



Arturo Toscanini, acclaimed by many experts as the greatest symphonic conductor of all time. As chief conductor of the NBC Symphony Orchestra, he has contributed greatly towards the advance of broadcast entertainment. An NBC photographer took these candid shots of Toscanini in action.





Three popular singers of classics—Lawrence Tibbett, Margaret Speaks and Walter Cassell.



Judging by the smiles of these three stars, serious music has its bright side. Left to right: Howard Barlow, CBS conductor; Vivian Della Chiesa, NBC lyric soprano, and Erno Rapee, NBC conductor.



Mario Cozzi, NBC baritone. Left: Pierre French, conductor, who scored favorably with American listeners. Right: Frank Black, NBC conductor.



# WORLD-WIDE SHORT-WAVE STATION LIST

Kc. Meters Call	Location	Kw.	Service, etc.	Kc. Meters Call	Location	Kw.	Service, etc.
400.000 0.75 W1XPG	Storrs, Conn.	0.5	Experimental	15.620 18.21 JVF	Namaki, Japan	20.0	Phone to KWU; occ. bc.
400.500 4.96 W8XKA	Pittsburgh, Pa.	0.15	Experimental	15.506 15.35 CMA3	Havana, Cuba	40.0	Tests; irr.
43.600 5.41 W3XKA	Pittsburgh, Pa.	0.15	Exp.; relays KDKA	15.400 19.37 KEM	Belinas, Calif.	40.0	Phone
41.000 7.22 W2XG	New York, N. Y.	0.5	Experimental	15.475 19.39 KKL	Belinas, Calif.	40.0	Phone
21.800 8.50 W1XKA	Chicopee Falls, Mass.	0.5	Experimental	15.450 19.43 IUG	Addis Ababa, Ethiopia	.....	Phone
31.600 9.49 W3XKA	Philadelphia, Pa.	.....	Exp.; relays KYW	15.400 19.45 XDM0	Matanzas, Matanzas, Mexico	.....	Be.; relays XEHL
31.800 9.49 W8XAI	Rochester, N. Y.	0.1	Exp.; relays WHAM	15.370 19.43 HAM	Manila, Philippines	20.0	Phone to Hawaii, Manila
31.800 9.49 W8XKA	Pittsburgh, Pa.	.....	Experimental	15.360 19.43 DZG	Zeezon, Germany	.....	Phone
31.800 9.49 W2XWJ	Detroit, Mich.	0.1	Exp.; relays WWJ	15.360 19.44 KWW	Duess, Calif.	20.0	Phone to Hawaii
39.900 9.49 W9XPD	St. Louis, Mo.	0.1	Exp.; relays KSD	15.340 19.45 DJR	Zeezon, Germany	20.0	Phone
26.100 11.49 GSK	Daventry, England	20.0	Broadcast	15.330 19.57 WJXAD	Sobremonte, N. Y.	20.0	Be.; relays WGY
21.400 13.55 W3XK	Pittsburgh, Pa.	40.0	Be.; relays KDKA	15.320 19.56 OLRIS	Podolsky, Czechoslovakia	20.0	Broadcast
21.400 13.05 GSI	Daventry, England	15.0	Broadcast	15.310 19.56 GSP	Daventry, England	20.0	Broadcast
21.380 13.94 W2XE	Wayne, N. J.	.....	Be.; relays WABC	15.300 19.60 CP7	LaFae, Bolivia	.....	Phone
21.380 13.94 JZM	Nasaki, Japan	20.0	Broadcast	15.290 19.63 JTA	Buenos Aires, Argentina	5-50	Broadcast
21.470 13.97 GSH	Daventry, England	20.0	Broadcast	15.290 19.63 LRU	Wayne, N. J.	3.0	Be.; relays LRI
21.400 13.05 W3XAL	Belinas, Calif.	20.0	Broadcast	15.280 19.64 WAXE	Wayne, N. J.	15.0	Be.; relays WABC
21.450 13.99 OLRRA	Podolsky, Czechoslovakia	25.0	Broadcast	15.280 19.64 GSH	Daventry, England	15.0	Broadcast
21.630 14.01 W3KA	Lawrenceville, N. J.	20.0	Phone	15.280 19.67 WJXAL	Boston, Mass.	5.0	Broadcast
21.190 14.18 LEL	Hurlingham, Argentina	60.0	Phone to London and Rio; day	15.240 19.68 TPA2	Pontinas, France	12.0	Broadcast
21.140 14.19 KBI	Manila, P. I.	10.0	Phone	15.230 19.70 OLRJA	Podolsky, Czechoslovakia	20.0	Broadcast
21.080 14.22 PBA	Marapies, Brazil	10.0	Phone; broadcast	15.230 19.73 WJXAL	Hurlingham, Argentina	40.0	Be.; relays KDKA
21.040 14.25 WKA	Lawrenceville, N. J.	20.0	Phone	15.230 19.74 DIB	Zeezon, Germany	5-50	Broadcast
21.040 14.25 WKA	Duron, Calif.	20.0	Phone	15.190 19.75 W2W4	Bongshan, China	2.0	Broadcast
21.020 14.27 LBN6	Murkingham, Argentina	60.0	Phone to New York; day	15.180 19.76 ORO	Daventry, England	.....	Broadcast
20.910 14.25 PSB	Marapies, Brazil	10.0	Phone	15.180 19.78 JZK	Podolsky, Czechoslovakia	20.0	Broadcast
20.840 14.37 CBY	Madrid, Spain	40.0	Phone to Buenos Aires	15.180 19.80 YDC	Daventry, England	.....	Broadcast
20.840 14.41 KSS	Belinas, Calif.	7.5	Phone	15.140 19.84 G87	Daventry, England	10.0	Broadcast
20.780 14.44 KMM	Belinas, Calif.	40.0	Phone	15.130 19.85 JTA	Wayne, N. J.	5-50	Broadcast
20.140 14.90 DWG	Nauen, Germany	.....	Phone	15.070 19.91 FPD	Manapies, Brazil	12.0	Phone
20.640 14.97 OPL	Leopoldville, Belgian Congo	9.0	Phone to ORG; mornings	15.064 19.98 WNC	Hurlingham, Argentina	20.0	Phone
20.600 14.99 DFB	Nauen, Germany	20.0	Phone to Calif.	15.050 20.00 WWV	Beltville, Md.	1.0	Phone; standard; Tue., Wed., Fri., 2-3 p.m. E. S. T.
19.850 15.02 KAX	Manila, P. I.	20.0	Phone to Latin America	14.985 ..... YSL	San Salvador, El Salvador	.....	Phone
19.820 15.14 WKN	Lawrenceville, N. J.	20.0	Phone	14.980 20.00 KAY	San Salvador, El Salvador	40.0	Phone
19.720 15.21 EAQ	Madrid, Spain	10.0	Phone	14.970 20.04 LSA	Soda, Bulgaria	.....	Broadcast
19.700 15.28 DJD	Nauen, Germany	20.0	Phone	14.900 20.06 YLH	San Salvador, El Salvador	.....	Phone
19.680 15.31 SFV	Abassaki, Egypt	6.1	Phone	14.935 20.09 FBL	Manapies, Brazil	.....	Phone; broadcast
19.680 15.31 SFV	Monte Grande, Argentina	7.0	Phone	14.910 20.12 JVG	Nasaki, Japan	10.0	Phone to Formosa; broadcast
19.520 15.37 IRW	Roma, Italy	20.0	Phone to South America	14.930 20.42 FSP	Manapies, Brazil	.....	Phone; broadcast
19.440 15.42 DRW	Nauen, Germany	40.0	Phone to South America	14.900 20.58 JVB	Nasaki, Japan	20.0	Phone; broadcast
19.440 15.51 PBA	Bandoeng, Java, D. E. I.	20.0	Phone; sometimes bc.	14.890 20.58 WMN	Lawrenceville, N. J.	20.0	Phone
19.320 15.58 PPU	Sepetiba, Brazil	12.0	Phone	14.880 20.64 HBU	Pontinas, Switzerland	20.0	Phone
19.320 15.61 WKP	Lawrenceville, N. J.	20.0	Phone	14.830 20.65 LBN1	Hurlingham, Argentina	60.0	Phone to New York; mora., eve.
19.320 15.62 ORG	Ruysseels, Belgium	9.0	Phone	14.830 20.62 FSP	Hurlingham, Argentina	60.0	Phone to Madrid, Berlin, Paris; day
19.140 15.82 LMS4	Murkingham, Argentina	60.0	Phone; sometimes bc.	14.800 20.75 YMA	Manapies, Brazil	.....	Phone
19.050 15.75 JVC	Nasaki, Japan	.....	Broadcast	14.800 20.75 DHB	Namaki, Germany	15.0	Phone
19.020 15.77 H88FJ	Bangkok, Man	20.0	Phone to Europe; occ. bc.	14.440 20.78 OJZ	Stevs, Fiji Islands	.....	Experimental
18.960 15.86 JVA	Klipheuef, S. Africa	3.0	Phone to Rugby	14.350 21.44 VJZ	Abu Zabal, Cairo, Egypt	20.0	Phone
18.980 15.88 ZSS	Rocky Point, N. Y.	40.0	Phone	14.320 21.70 SVICH	Osire, Egypt	.....	Amateur; broadcast
18.980 15.91 WKM	Bandoeng, Java, D. E. I.	40.0	Phone	14.310 21.78 BUL	Abu Zabal, Egypt	12.0	Phone
18.920 15.93 PLE	Bandoeng, Java, D. E. I.	15.0	Phone to Dizon and Nasaki	14.280 21.80 FJZ	Belinas, Calif.	40.0	Phone to U. S. A.
18.840 16.08 OCI	Rugby, England	15.0	Phone to WMI, VVY	14.280 21.80 FJZ	Wayne, Poland	20.0	Broadcast
18.800 16.13 PDM	Kootwijk, Holland	40.0	Phone	14.280 21.80 FJZ	Kampukono-Chu, Japan	15.0	Experimental; bc.
18.465 16.18 PCM	Kootwijk, Holland	40.0	Phone	14.280 21.80 FJZ	Nasaki, Japan	10.0	Phone to Manchukuo; also bc.
18.460 16.23 HBR	Prangins, Swissland	20.0	Phone to GAG	14.237 22.47 YVQ	Manapies, Venezuela	20.0	Phone
18.460 16.26 PCK	Kootwijk, Holland	40.0	Phone to France	14.230 22.78	Drummondville, Canada	15.0	Phone
18.340 16.36 WLA	Lawrenceville, N. J.	20.0	Phone to Jax; E. I.; bc.	14.230 22.88 CMA3	Manila, P. I.	40.0	Phone
18.310 16.38 FZB	Saguen, French Indo-China	15.0	Phone	14.210 23.17 FNRK	S. S. Normandie	.....	Phone
18.270 16.42 IUD	Aden Ababa, Ethiopia	10.0	Phone	14.140 23.23 CWH	Carrie, Uruguay	1.5	Phone
18.190 16.46 JVF	Nasaki, Japan	20.0	Phone	14.090 23.96	Nasaki, Japan	10.0	Phone to ships
18.164 16.51 PPZ	Sepetiba, Brazil	20.0	Phone	14.020 24.04 JZE	Celinas, Italy	52.0	Phone
18.135 16.55 PMC	Bandoeng, Java	40.0	Phone; sometimes bc.	14.020 24.04 JZE	San Francisco	.....	Time signals; 4:55-5:00 p.m. E. S. T.
18.090 16.58 TYE	Pontinas, France	12.0	Phone to U. S. A.	14.020 24.10 GBU	Rugby, England	15.0	Phone
18.040 16.68 KQR	Belinas, Calif.	40.0	Phone	14.020 24.10 TYB	Pontinas, France	.....	Phone to JVI, ships
18.020 16.65 KQJ	Belinas, Calif.	40.0	Transpacific phone	14.020 24.10 TYB	Belinas, France	.....	Broadcast
17.980 16.69 KQJ	Belinas, Calif.	40.0	Phone	14.020 24.10 TYB	Rugby, England	15.0	Phone to U. S. A.
17.940 16.72 W2E	Rocky Point, N. Y.	40.0	Phone	14.020 24.10 TYB	Kootwijk, Holland	60.0	Phone
17.940 16.72 W2E	Rocky Point, N. Y.	40.0	Phone	14.020 24.10 TYB	Manapies, Australia	.....	Tests with Drummondville
17.920 16.86 GSG	Daventry, England	15.0	Broadcast	14.020 24.10 TYB	Manapies, U.S.S.R.	20.0	Be. and phone
17.735 16.87 JZL	Nasaki, Japan	.....	Broadcast	14.020 24.10 TYB	Addis Ababa, Ethiopia	3.5	Phone
17.730 16.87 W3XK	Pittsburgh, Pa.	.....	Be.; relays KDKA	14.020 24.10 TYB	Belinas, Calif.	40.0	Phone
17.730 16.87 W3XAL	Brook Brook, N. J.	15.0	Broadcast; relays WJZ	14.020 24.10 TYB	Manapies, D. F. Mexico	.....	Broadcast
17.730 16.87 W3XAA	Chicago, Illinois	0.5	Experimental	14.020 24.10 TYB	Parade, Portugal	0.35	Broadcast
17.730 16.88 PHJ	Huizen, Holland	23.6	Be.; relays WABC	14.020 24.10 TYB	Podolsky, Czechoslovakia	25.0	Broadcast
17.730 16.89 W2XE	Wayne, N. J.	5-50	Broadcast	14.020 24.10 TYB	Aqueduct, Panama	0.05	Broadcast
17.680 16.89 DJF	Zeezon, Germany	2.0	Broadcast	14.020 24.10 TYB	Manapies, D. F. Mexico	25.0	Broadcast
17.755 16.90 ZBW5	Hongkong, China	2.0	Broadcast	14.020 24.10 TYB	Manapies, D. F. Mexico	0.1	Broadcast
17.750 16.90 IAC	Cotano, Italy	14.0	Phone; early mornings	14.020 24.10 TYB	Pontinas, France	.....	Broadcast
17.740 16.91 HSP	Bangkok, Man	20.0	Phone to JVG	14.020 24.10 TYB	Be.; relays WENR	.....	Broadcast
17.620 17.00	British Ship	.....	Phone to YVR	14.020 24.10 TYB	Podolsky, Czechoslovakia	40.0	Be.; relays KDKA
17.480 17.12 DFB	Kirkos, India	.....	Phone to Rugby	14.020 24.10 TYB	Pontinas, France	.....	Broadcast
17.410 17.33 W2XL	Sound Brook, N. J.	20.0	Experimental	14.020 24.10 TYB	Rugby, England	15.0	Phone
17.355 17.37 DAF	Nordosk, Germany	20.0	Broadcast	14.020 24.10 TYB	Kootwijk, Holland	60.0	Phone
17.380 17.51 BAS5	Sakofshervar, Hungary	.....	Time signals; 9:55-10:00 a.m. E. S. T.	14.020 24.10 TYB	Manapies, Australia	.....	Tests with Drummondville
18.620 17.84 NAA	Arlington, Virginia	.....	Phone	14.020 24.10 TYB	Manapies, U.S.S.R.	20.0	Be. and phone
18.665 18.00	German Ship	.....	Phone to Bandoeng	14.020 24.10 TYB	Addis Ababa, Ethiopia	3.5	Phone
18.305 18.40 PCL	Kootwijk, Holland	20.0	Phone to Rugby	14.020 24.10 TYB	Belinas, Calif.	40.0	Phone
18.270 18.44 WLK	Lawrenceville, N. J.	20.0	Phone to Dizon	14.020 24.10 TYB	Manapies, D. F. Mexico	.....	Broadcast
18.240 18.47 KTO	Manila, P. I.	40.0	Phone to KWO	14.020 24.10 TYB	Parade, Portugal	0.35	Broadcast
18.120 18.61 IRY	Rome, Italy	40.0	Phone	14.020 24.10 TYB	Podolsky, Czechoslovakia	25.0	Broadcast
18.030 18.71 KRP	Kakubu, Hawaii	40.0	Phone	14.020 24.10 TYB	Aqueduct, Panama	0.05	Broadcast
18.985 18.77 KQH	Kakubu, Hawaii	40.0	Phone	14.020 24.10 TYB	Manapies, D. F. Mexico	0.1	Broadcast
18.950 18.81 PLG	Bandoeng, Java	40.0	Phone; afterwards	14.020 24.10 TYB	Pontinas, France	.....	Broadcast
18.850 18.89 FTK	Sak. Assien, France	30.0	Phone to Saigon	14.020 24.10 TYB	Be.; relays WENR	.....	Broadcast
18.985 18.91 CEC	La Grana, Chile	0.5	Phone	14.020 24.10 TYB	Podolsky, Czechoslovakia	40.0	Be.; relays KDKA
18.920 18.90 JVD	Nasaki, Japan	.....	Phone to Shanghai	14.020 24.10 TYB	Pontinas, France	.....	Broadcast
18.910 18.97 LSL3	Hurlingham, Argentina	60.0	Phone to London, Rio; mora., eve.	14.020 24.10 TYB	Rugby, England	15.0	Phone
15.750 19.05 JIA	Tyureki, Formosa	10.0	Phone to Nasaki	14.020 24.10 TYB	Kootwijk, Holland	60.0	Phone
15.680 19.13 JZA	Kanabshi, Manchukuo	20.0	Phone to Nasaki	14.020 24.10 TYB	Manapies, Java, D. E. I.	1.0	Be.; relays KDKA
15.960 19.16 JVE	Nasaki, Japan	10.0	Phone to PLE, P. I.; occ. bc.	14.020 24.10 TYB	Daventry, England	20.0	Broadcast



Kc. Meters Call	Location	Kw.	Service, etc.	Kc. Meters Call	Location	Kw.	Service, etc.
11,840 25.34 OLR4A	Podebrady, Czechoslovakia	25.0	Broadcast	6,330 31.51 XEMF	Merida, Yucatan, Mexico	0 015	Bc.; relay: XEPC
11,830 25.36 WX2E	New York, N. Y.	10.0	Bc.; relay: WABC	6,330 31.51 HJ4ABH	Armenia, Colombia	20.0	Bc.; relay: HJ4ABH
11,830 25.36 WX2AA	Chicago, Illinois	0.5	Bc.; relay: WCPL	6,310 31.55 GEB	Buenaventura, Colombia	20.0	Broadcast
11,820 25.38 XE8R	Hermosillo, Sonora, Mexico	20.0	Broadcast	6,310 31.58 HJU	Melbourne, Australia	5.0	Broadcast
11,820 25.38 GSN	Daventry, England	20.0	Broadcast	6,310 31.48 VK3ME	Podebrady, Czechoslovakia	25.0	Broadcast
11,810 25.40 CRXC	Toronto, Canada	25.0	Broadcast	6,300 31.45 PFI	Rio de Janeiro, Brazil	0 00	Broadcast
11,810 25.40 I2R04	Rome, Italy	25.0	Broadcast	6,300 31.56 HJ1ABE	Quilagua, Colombia	20.0	Broadcast
11,804 25.42 OAXSA	Ica, Peru	.....	Broadcast	6,290 31.60 XEFT	Veracruz, Ver. Mexico	02	Broadcast
11,801 25.42 OER2	Austria, Vienna	1.5	Broadcast	6,290 31.61 WEF	Bolton, Calif.	20.0	Phone
11,790 25.42 J2J	Nagasaki, Japan	.....	Broadcast	6,290 31.65 XEDQ	Gundalajaya, Malaya	40.0	Phone
11,795 25.43 DJO	Zeevoer, Germany	5-50	Experimental	6,280 31.65 KET	Mexico	0 5	Bc.; relay: XED
11,790 25.45 WJXAL	Boston, Mass.	5-50	Broadcast	6,280 31.75 TGWA	Bolinas, Calif.	40.0	Phone
11,770 25.49 DJD	Zeevoer, Germany	5-50	Experimental	6,441 31.78 HC2EBA	Guatemala City, Guatemala	0 2	Experimental
11,760 25.51 OLR4B	Podebrady, Czechoslovakia	25.0	Broadcast	6,438 31.82 COCH	Guayaquil, Ecuador	10.0	Broadcast
11,750 25.53 GMD	Daventry, England	20.0	Broadcast	6,438 31.85 NAA	Havana, Cuba	10.0	Broadcast
11,740 25.55 HPAL	Buaid, Panama	0 25	Broadcast	6,415 31.86 PLV	Arlington, Va.	.....	Time signals; see article on time signals
11,720 25.57 PFI	Hulsen, Holland	20.0	Broadcast; winter months	6,390 37.06	Bandung, Java, D. E. I.	80.0	Phone; sometimes bc.
11,720 25.57 CJRX	Winnipeg, Man., Canada	2.0	Broadcast	6,390 37.06	Port de France, Martinique	.....	Broadcast
11,720 25.60 TPA4	Posteier, France	17.0	Broadcast	6,350 32.06 H8P1	Bangkok, Siam	.....	Broadcast
11,718 25.60 CR7BH	Leourene Marques, Mozambique	0.38	Broadcast	6,330 32.16 OAXK	Lima, Peru	.....	Broadcast
11,705 25.63 SM3X	Stockholm, Sweden	.....	Broadcast	6,300 32.24 YNG	Managua, Nicaragua	.....	Broadcast
11,680 25.68 KIO	Kahuku, Hawaii	40.0	Phone to Bolinas	6,285 32.54 YH7A	Puerto Cabezas, Nicaragua	0 1	Phone
11,670 25.71 PPQ	Sepetiba, Brazil	5.0	Phone	6,285 32.57 YH7A	Stockholm, Hungary	20.0	Broadcast
11,660 25.73 JVL	Nagasaki, Japan	10.0	Phone to Panama; bc.	6,285 32.57 YH7A	Kirtos, India	.....	Broadcast
11,595 25.88 VBR4	Stony Hill, Jamaica	.....	Phone to Miami, Fla.	6,285 32.57 YH7A	Poston, France	15.0	Phone to Algeria; morning
11,540 26.00 XGR	Shanghai, China	20.0	Phone to Diamondville, N. Y.	6,285 32.57 YH7A	Algiers, Algeria	.....	Phone
11,495 26.10 VIZ-3	Parkville, Australia	1.0	Bc.; relay: CMX	6,285 32.57 YH7A	British Ship, French Ship	0 5	Broadcast
11,435 26.12 COCK	Havanna, Cuba	0 1	Phone	6,285 32.57 YH7A	Bogota, Colombia	.....	Broadcast
11,430 26.35 YNE	Puerto Cabezas, Nicaragua	20.0	Broadcast	6,285 32.57 YH7A	Mahamur, Calcutta, D. E. I.	2.0	Phone; ooc. bc.
11,385 26.35 HEO	Prangins, Switzerland	1.0	Phone	6,285 32.57 YH7A	Manila, P. I.	20.0	Phone to Dixon, Calif.
11,340 26.45 DAF	Nordesch, Germany	.....	Phone	6,285 32.57 YH7A	Sava, Fiji Islands	.....	Phone
11,280 26.59 HIN	Trujillo, D. R.	0 75	Broadcast	6,285 32.57 YH7A	Canaguay, Cuba	0 20	Broadcast
11,140 26.83	German Ships	.....	Phone	6,285 32.57 YH7A	Managua, Nicaragua	0 5	Broadcast
11,040 27.17 HRW	La Ceiba, Honduras	0 1	Phone	6,285 32.57 YH7A	German Ship	.....	Phone
11,040 27.17 CSW	Lisbon, Portugal	5.0	Broadcast	6,285 32.57 YH7A	Nordesch, Germany	.....	Phone to ships
11,000 27.27 ELT4	Wellington, New Zealand	.....	Phone; ooc. bc.	6,285 32.57 YH7A	Guayaquil, Ecuador	0 015	Broadcast
10,955 27.38 HSG2	Bandung, Java	.....	Phone; bc.	6,285 32.57 YH7A	Asuncion, Paraguay	.....	Broadcast
10,955 27.65 DFL	Bangkok, Siam	.....	Phone	6,285 32.57 YH7A	La Ceiba, Honduras	0 1	Phone
10,840 27.56 KVV	Nuesen, Germany	.....	Phone	6,285 32.57 YH7A	Managua, Brazil	.....	Phone; bc.
10,770 27.66 GCP	Dixon, Calif.	20.0	Phone to Hawaii	6,285 32.57 YH7A	Manila, P. I.	20.0	Phone to Dixon, Calif.
10,740 27.93 JVM	Rugby, England	15.0	Phone to U. S. A.; ooc. bc.; relay: JOAK	6,285 32.57 YH7A	Rabat, Morocco	12.0	Phone; bc.
10,670 28.12 CEC	Nagasaki, Japan	0 5	Phone	6,285 32.57 YH7A	Amoy, China	0 4	Phone
10,660 28.14 JVN	Rocky Point, N. Y.	20.0	Phone to U. S. A.; ooc. bc.; relay: JOAK	6,285 32.57 YH7A	Hurlingham, Argentina	.....	Broadcast
10,620 28.25 WEF	Rocky Point, N. Y.	20.0	Phone to U. S. A.; ooc. bc.; relay: JOAK	6,285 32.57 YH7A	Kemihawa, Cho, Japan	5.0	Broadcast
10,610 28.28 WEA	Paris, France	.....	Time signals; 7:30-8 p. m., R. S. T.	6,285 32.57 YH7A	Abu Zabal, Egypt	.....	Phone
10,578 28.35 FYB	Tyurki, Formosa	4.0	Phone to U. S. A.	6,285 32.57 YH7A	Guayaquil, Ecuador	0 5	Broadcast
10,430 28.76 TYG	Posteier, France	12.0	Phone to U. S. A.	6,285 32.57 YH7A	Kootenai, Holland	.....	Phone
10,430 28.76 YBS	Modan, Sumatra, D. E. I.	3.0	Phone; ooc. bc.	6,285 32.57 YH7A	Puerto Cabezas, Nicaragua	0 1	Phone
10,420 28.78 XGW	Shanghai, China	20.0	Phone	6,285 32.57 YH7A	Prangins, Switzerland	20.0	Broadcast
10,410 28.82 KES	Bolinas, Calif.	40.0	Phone	6,285 32.57 YH7A	La Ceiba, Chile	0 5	Phone
10,410 28.82 LRS	Monte Grande, Argentina	12.0	Phone	6,285 32.57 YH7A	Adela, Bolivia, Bhopia	.....	Broadcast
10,410 28.82 PDK	Hurlingham, Argentina	60.0	Phone	6,285 32.57 YH7A	Managua, Nicaragua	0 12	Broadcast
10,400 28.85 KEE	Dixon, Calif.	20.0	Phone	6,285 32.57 YH7A	Panama, Costa Rica	40.0	Phone
10,370 28.92 JVO	Nagasaki, Japan	10.0	Phone to Marabou; bc.	6,285 32.57 YH7A	Nagasaki, Japan	40.0	Phone
10,370 28.93 EAJ43	Tenerife, Spanish Islands	.....	Broadcast	6,285 32.57 YH7A	Nagasaki, Japan	10.0	Phone
10,350 28.98 BAJ33	Cannara, Spain	.....	Broadcast	6,285 32.57 YH7A	Rocky Point, N. Y.	40.0	Phone
10,230 28.98 LKX	Monte Grande, Argentina	12.0	Phone; also bc.	6,285 32.57 YH7A	Kahuku, Hawaii	40.0	Phone
10,230 29.03 EFD	St. George, Bermuda	1.5	Phone; security telegraph	6,285 32.57 YH7A	Nagasaki, Japan	10.0	Phone
10,230 29.03 ORK	Stockholm, Sweden	11.0	Broadcast	6,285 32.57 YH7A	Nagasaki, Japan	10.0	Phone
10,210 29.10 PFM	Sepetiba, Brazil	20.0	Phone	6,285 32.57 YH7A	Rocky Point, N. Y.	40.0	Phone
10,200 29.12 LRL	Hurlingham, Argentina	60.0	Phone to London, Rio; night	6,285 32.57 YH7A	Kahuku, Hawaii	40.0	Phone
10,190 29.18 DZC	Zeevoer, Germany	.....	Phone; ooc. bc.	6,285 32.57 YH7A	Manila, P. I.	20.0	Broadcast
10,180 29.84 PMN	Bandung, Java, D. E. I.	3.0	Phone to Madrid, Bolivia	6,285 32.57 YH7A	Guayaquil, Ecuador	0 03	Broadcast
10,180 29.87 LMR3	Hurlingham, Argentina	60.0	Phone; night	6,285 32.57 YH7A	Adela, Australia	.....	Experimental
10,120 29.93 CED	Antofagasta, Chile	0 4	Phone; bc.	6,285 32.57 YH7A	Stockholm, Sweden	0 03	Broadcast
10,120 29.93 PFI	Managua, Brazil	.....	Phone; bc.	6,285 32.57 YH7A	Stockholm, Sweden	0 03	Broadcast
10,110 29.95 RQM	Dakar, Senegal	.....	Phone to Dakar	6,285 32.57 YH7A	Stockholm, Sweden	0 03	Broadcast
10,110 29.95 RQM	Leopoldville, Belgian Congo	25.0	Phone to Dakar	6,285 32.57 YH7A	Stockholm, Sweden	0 03	Broadcast
10,090 29.98 RIR	Tyurki, Formosa	4.0	Phone to Dakar	6,285 32.57 YH7A	Stockholm, Sweden	0 03	Broadcast
10,070 29.98 RIR	Madrid, Spain	20.0	Phone to Dakar	6,285 32.57 YH7A	Stockholm, Sweden	0 03	Broadcast
10,065 29.81 TDE	Kanagawa, Manchukuo	20.0	Phone to JVO	6,285 32.57 YH7A	Stockholm, Sweden	0 03	Broadcast
10,065 29.84 ZVB	St. George, Bermuda	1.5	Phone	6,285 32.57 YH7A	Stockholm, Sweden	0 03	Broadcast
10,065 29.84 ZVB	Abu Zabal, Egypt	20.0	Phone to Germany, England	6,285 32.57 YH7A	Stockholm, Sweden	0 03	Broadcast
10,042 29.87 DZC	Zeevoer, Germany	.....	Phone	6,285 32.57 YH7A	Stockholm, Sweden	0 03	Broadcast
10,030 30.00 WVV	Bolinas, Md.	.....	Standard frequency	6,285 32.57 YH7A	Stockholm, Sweden	0 03	Broadcast
9,990 30.03 KAZ	Manila, P. I.	.....	Broadcast	6,285 32.57 YH7A	Stockholm, Sweden	0 03	Broadcast
9,940 30.18 CSW	Lisbon, Portugal	.....	Broadcast	6,285 32.57 YH7A	Stockholm, Sweden	0 03	Broadcast
9,890 30.32 LSN2	Hurlingham, Argentina	60.0	Phone to New York; night	6,285 32.57 YH7A	Stockholm, Sweden	0 03	Broadcast
9,840 30.42 EAO	Madrid, Spain	20.0	Broadcast	6,285 32.57 YH7A	Stockholm, Sweden	0 03	Broadcast
9,840 30.49 JYS	Kemihawa, Cho, Japan	.....	Broadcast	6,285 32.57 YH7A	Stockholm, Sweden	0 03	Broadcast
9,740 30.80 COCQ	Havana, Cuba	.....	Bc.; relay: CMQ	6,285 32.57 YH7A	Stockholm, Sweden	0 03	Broadcast
9,675 31.01 DZA	Zeevoer, Germany	.....	Phone	6,285 32.57 YH7A	Stockholm, Sweden	0 03	Broadcast
9,670 31.02 T4VNR	Hervilla, C. R.	.....	Broadcast	6,285 32.57 YH7A	Stockholm, Sweden	0 03	Broadcast
9,665 31.04 CTIAA	Lisbon, Portugal	.....	Broadcast	6,285 32.57 YH7A	Stockholm, Sweden	0 03	Broadcast
9,660 31.06 PSJ	Managua, Brazil	.....	Phone	6,285 32.57 YH7A	Stockholm, Sweden	0 03	Broadcast
9,640 31.10 HEG8	Buenos Aires, Argentina	5.0	Bc.; relay: LRI	6,285 32.57 YH7A	Stockholm, Sweden	0 03	Broadcast
9,625 31.14 H809	Port-au-Prince, Haiti	0 08	Broadcast	6,285 32.57 YH7A	Stockholm, Sweden	0 03	Broadcast
9,618 31.18 HJ1ABP	Rome, Italy	20.0	Broadcast	6,285 32.57 YH7A	Stockholm, Sweden	0 03	Broadcast
9,610 31.22 YDZ	Cartagena, Colombia	0 7	Bc.; relay: YDA	6,285 32.57 YH7A	Stockholm, Sweden	0 03	Broadcast
9,605 31.23 HFAJ	Soerabaya, Java, D. E. I.	1.0	Broadcast	6,285 32.57 YH7A	Stockholm, Sweden	0 03	Broadcast
9,600 31.23 CQN	Panama, Panama	0 10	Broadcast	6,285 32.57 YH7A	Stockholm, Sweden	0 03	Broadcast
9,600 31.25 CB90	Manco, Port China	.....	Broadcast	6,285 32.57 YH7A	Stockholm, Sweden	0 03	Broadcast
9,600 31.25 RAN	Santiago, Chile	.....	Broadcast	6,285 32.57 YH7A	Stockholm, Sweden	0 03	Broadcast
9,597 31.28 VK6ME	Moscow, U.S.S.R.	.....	Broadcast	6,285 32.57 YH7A	Stockholm, Sweden	0 03	Broadcast
9,595 31.27 HBL	Perth, Australia	.....	Experimental	6,285 32.57 YH7A	Stockholm, Sweden	0 03	Broadcast
9,590 31.28 PFI	Prangins, Switzerland	20.0	Broadcast	6,285 32.57 YH7A	Stockholm, Sweden	0 03	Broadcast
9,590 31.28 WX3AU	Hulsen, Holland	20.0	Bc.; relay: WAOA	6,285 32.57 YH7A	Stockholm, Sweden	0 03	Broadcast
9,590 31.28 VK2ME	Philadelphus, Pa.	10.0	Bc.; relay: WAOA	6,285 32.57 YH7A	Stockholm, Sweden	0 03	Broadcast
9,580 31.31 VK3LR	Sydney, Australia	20.0	Broadcast	6,285 32.57 YH7A	Stockholm, Sweden	0 03	Broadcast
9,580 31.31 GSN	Lynchburg, Vir., Australia	20.0	Broadcast	6,285 32.57 YH7A	Stockholm, Sweden	0 03	Broadcast
9,575 31.34 HJ2ABC	Daventry, England	0 25	Broadcast	6,285 32.57 YH7A	Stockholm, Sweden	0 03	Broadcast
9,570 31.35 WIKX	Cuenca, Colombia	10.0	Bc.; relay: WBZ, WBEA	6,285 32.57 YH7A	Stockholm, Sweden	0 03	Broadcast
9,565 31.38 P2B	Mulla, Mass.	0 1	Broadcast	6,285 32.57 YH7A	Stockholm, Sweden	0 03	Broadcast
9,565 31.38 VIB	Bombay, India	4.5	Broadcast	6,285 32.57 YH7A	Stockholm, Sweden	0 03	Broadcast
9,560 31.38 DJA	Zeevoer, Germany	5.0	Broadcast	6,285 32.57 YH7A	Stockholm, Sweden	0 03	Broadcast
9,560 31.38 HJ1ABP	Barranquilla, Colombia	1.0	Broadcast	6,285 32.57 YH7A	Stockholm, Sweden	0 03	Broadcast
9,561 31.41 HR2Y	Port-au-Prince, Haiti	0 03	Broadcast	6,285 32.57 YH7A	Stockholm, Sweden	0 03	Broadcast
9,550 31.41 OLR2A	Podebrady, Czechoslovakia	25.0	Broadcast	6,285 32.57 YH7A	Stockholm, Sweden	0 03	Broadcast
9,540 31.47 LKJ1	Jeloy, Norway	1.0	Broadcast	6,285 32.57 YH7A	Stockholm, Sweden	0 03	Broadcast
9,540 31.47 DJN	Zeevoer, Germany	5-50	Broadcast	6,285 32.57 YH7A	Stockholm, Sweden	0 03	Broadcast
9,535 31.46 WZAF	Nagasaki, Japan	40.0	Bc.; relay: WGY	6,285 32.57 YH7A	Stockholm, Sweden	0 03	Broadcast
9,525 31.49 ZBW3	Schenectady, N. Y.	2.0	Bc.; relay: ZBW	6,285 32.57 YH7A	Stockholm, Sweden	0 03	Broadcast
	Hong-Kong, China	2.0	Bc.; relay: ZBW	6,285 32.57 YH7A	Stockholm, Sweden	0 03	Broadcast

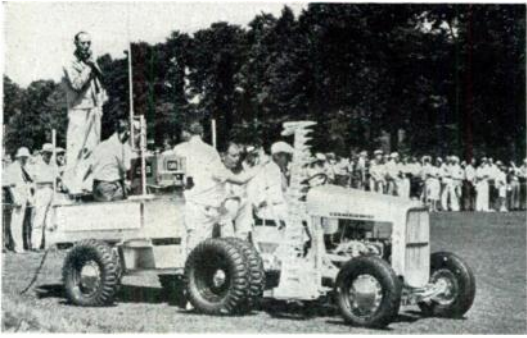
Kc. Meters Call	Location	Kw.	Service, etc.	Kc. Meters Call	Location	Kw.	Service, etc.
6,350 47.24 YNJ5	Waspoak, Nicaragua	0.1	Phone	6,025 49.79 HJ1ABJ	Santa Marta, Colombia	0.025	Broadcast
6,350 47.24 YNJ7	Wapam, Nicaragua	0.1	Phone	6,020 49.83 DJC	Zeeven, Germany	5-60	Broadcast
6,357 47.20 HRP1	San Pedro Sula, Honduras	0.075	Broadcast	6,020 49.83 XEUW	Venezuela, Ver., Mexico	.....	Broadcast
6,360 47.32 YNE	Puerto Cabezas, Nicaragua	0.1	.....	6,015 49.88 XEWI	Mexico, D. F., Mexico	0.25	Broadcast
6,340 47.35 HIX	Trujillo, D. R.	.....	Broadcast	6,015 49.83 HJABH	Bogota, Colombia	0.25	Broadcast
6,350 47.39 JZQ	Namaki, Japan	.....	Phone to ships	6,010 49.92 VP3MR	Georgetown, British Guiana	0.25	Amateur; be.
6,310 47.54 HIZ	Trujillo, D. R.	0.02	Broadcast	6,010 49.92 COCO	Havana, Cuba	0.25	Broadcast
6,300 47.62 YVARD	Maracaibo, Venezuela	0.1	Broadcast	6,010 49.92 OLIZA	Podebrady, Czechoslovakia	25.0	Broadcast
6,290 47.77 HIG	Trujillo, D. R.	0.05	Broadcast	6,035 49.96 CPXK	Montreal, Quebec	0.075	Be, relays CFCF
6,280 47.77 COHB	Sancti Spiritus, Cuba	0.15	Broadcast	6,005 49.96 VE9DN	Montreal, Quebec	4.0	Broadcast
6,270 47.84 YVSRP	Caracas, Venezuela	.....	Broadcast	6,003 49.97 XEBT	Mexico, D. F., Mexico	1.0	Be; relays XEB
6,260 47.92 OAX4G	Lima, Peru	.....	Broadcast	6,000 50.00 HJ1ABC	Quibdo, Colombia	0.1	Broadcast
6,250 48.00 YV9EG	Caracas, Venezuela	.....	Broadcast	6,000 50.00 VOI	Bucaramanga, Roumania	0.1	Broadcast
6,243 48.05 HIN	Trujillo, D. R.	0.75	Broadcast	6,000 50.00 RV99	Moscow, U.S.S.R.	20.0	Broadcast
6,235 48.11 HRD	La Ceiba, Honduras	0.25	Broadcast	6,000 50.00 TGWA	Guatemala City, Guatemala	0.2	Broadcast
6,225 48.10 YVIRG	Valera, Venezuela	0.2	.....	6,000 50.00 FIQA	Tananariva, Madagascar	.....	Broadcast
6,200 48.35 YVIRI	Coco, Venezuela	.....	Broadcast	5,980 50.17 HIX	Trujillo, D. R.	1.0	Broadcast
6,200 48.39 XEXS	Mexico, D. F., Mexico	0.1	Broadcast	5,969 50.28 HJV	Vaticana City	10.0	Broadcast
6,200 48.39 COKG	Santiago, Cuba	2.4	Be; relays CMKB	5,955 50.38 HJN	Bogota, Colombia	.....	Broadcast
6,198 48.08 HIRG	Ciudad, Trujillo	0.025	Broadcast	5,955 50.04 RPT	Tashkent, U.S.S.R.	1.0	Phone
6,190 48.47 HIIA	Santiago de los Caballeros	.....	Broadcast	5,950 50.08 HJ2ABD	Bucaramanga, Colombia	0.1	Broadcast
	D. R.	0.05	Broadcast	5,950 50.08 HPSK	Colon, Panama	.....	Broadcast
6,164 48.67 OAX1B	Chicalay, Peru	0.3	Be; relays OAKIA	5,940 50.50 TG2X	Port-au-Prince, Haiti	0.2	Police; be.
6,150 48.70 CJO	Winnipeg, Man., Canada	.....	Be; relays CJRC	5,925 50.64 HBSS	Valencia, Venezuela	0.1	Be; relays HHZT
6,150 48.78 FT4J	Tunis, Tunisia	.....	Experimental	5,917 50.71 YV4RH	Maracaibo, Venezuela	.....	Broadcast
6,150 48.73 YV9RD	Caracas, Venezuela	1.0	Broadcast	5,917 50.71 YV1SRV	Maracaibo, Venezuela	0.25	Broadcast
6,150 48.78 CB815	Santiago, Chile	0.15	Broadcast	5,899 50.84 YV3RA	Barquisimeto, Venezuela	0.325	Broadcast
6,150 48.78 HJ5N	Santiago de los Caballeros, D. R.	0.1	Broadcast	5,882 51.00 ZEA	Salisbury, So. Rhodesia	.....	Phone
6,150 48.78 HJ4ABU	Pereira, Colombia	.....	Broadcast	5,880 51.02 UJA	Addis Ababa, Ethiopia	.....	Phone
6,150 48.78 VEXCL	Winnipeg, Man., Canada	0.1	Broadcast	5,870 51.06 HRN	Trujillo, D. R.	.....	Broadcast
6,148 48.80 ZEB	Bulawayo, So. Rhodesia	0.325	Broadcast	5,865 51.15 HJ1J	San Pedro de Macoris, D. R.	0.04	Broadcast
6,140 48.88 W8XE	Pittsburgh, Pa.	40.0	Be; relays KDEA	5,850 51.28 YV1RB	Maracaibo, Venezuela	0.8	Broadcast
6,137 48.88 CR7AA	Lourenco Marques, Mozambique	0.35	Broadcast	5,845 51.32 KRB	Kabuku, Hawaii	40.0	Phone
		.....	Broadcast	5,830 51.46 TDD	Shinkin, Manchukuo	.....	Phone to Tokyo
6,133 48.91 XEXA	Mexico, D. F., Mexico	.....	Broadcast	5,830 51.46 CWD	Montevideo, Uruguay (Cerrito)	1.5	Phone
6,122 48.92 CTIGO	Paredo, Portugal	0.35	Broadcast	5,830 51.46 TIOFH	San Jose, Costa Rica	1.0	Broadcast
6,130 48.94 COCD	Havana, Cuba	0.2	Be; relays CMCD	5,830 51.00 TIX2	San Jose, Costa Rica	0.5	Broadcast
6,120 48.94 LKJ1	Heloy, Norway	1.0	Broadcast	5,800 51.72 YV5RC	Caracas, Venezuela	1.0	Broadcast
6,130 48.94 VP3BG	Georgetown, British Guiana	0.15	Broadcast	5,800 51.72 KZGF	Manila, P. I.	.....	Phone; oec. be.
6,128 48.96 OAX7A	Cusco, Peru	.....	Broadcast	5,790 51.81 JTV	Namaki, Japan	10.0	Phone to Manchukuo; also be.
6,125 48.98 CX4A	Montevideo, Uruguay	1.0	Broadcast				
6,122 49.01 HJ3ABX	Noyata, Colombia	.....	Broadcast	5,780 51.90 OAX4D	Lima, Peru	20.0	Broadcast
6,122 49.01 OAX4P	Huancayo, Peru	.....	Broadcast	5,780 51.90 HJ4ABD	Medellin, Colombia	.....	Broadcast
6,122 49.01 OAX6A	Arequipa, Peru	.....	Broadcast	5,748 52.10 YNOP	Managua, Nicaragua	.....	Broadcast
6,120 49.02 YDA5	Bandoeng, Java, D. E. I.	1.5	Broadcast	5,743 52.31 HC1PM	Quito, Ecuador	.....	Broadcast
6,120 49.02 NEFW	Mexico, D. F., Mexico	.....	Broadcast	5,730 52.36 JYV	Namaki, Japan	10.0	.....
6,120 49.02 XEFT	Venezuela, Venezuela, Mexico	.....	Broadcast	5,713 52.51 TQ9	Guatemala City, Guatemala	0.2	Broadcast
6,120 49.02 HP5Z	Panama City, Panama	0.2	Broadcast	5,710 52.54 YV2RA	San Cristobal, Venezuela	0.75	Broadcast
6,115 49.06 XE2U	Wayne, N. J.	10.0	Be; relays WABC	5,705 52.56 CFU	Rosinlad, B. C., Canada	.....	Phone; be.
6,117 49.04 NEUZ	Mexico, D. F.	.....	Broadcast	5,670 52.91 DAP	Norddeich, Germany	.....	Phone; be.
6,115 49.06 XE2U	Barranquilla, Colombia	1.0	Broadcast	5,655 54.00 YNE	Puerto Cabezas, Nicaragua	0.1	Phone
6,115 49.06 OL2RC	Podebrady, Czechoslovakia	25.0	Broadcast	5,600 54.55 TISHH	San Ramon, Costa Rica	0.2	Broadcast
6,110 49.10 USL	Darveny, England	20.0	Broadcast	5,498 54.54 ROI	Sverdlovsk, U.S.S.R.	15.0	Phone
6,110 49.10 V9E9H	Bailaf, N. S. C., Canada	0.2	Be; relays CENS	5,435 55.19 LSH	Monte Grand, Argentina	0.5	Phone
6,108 49.10 VUC	Calcutta, India	0.5	Broadcast	5,415 55.40 PMY	Bandoeng, Java, D. E. I.	15.0	Phone; be.
6,108 49.11 HJ4ABB	Manizales, Colombia	.....	Broadcast	5,170 56.05 HRW.			
6,100 49.18 W3XAL	Bound Brook, N. J.	20.0	Be; relays WJZ				
6,100 49.18 W9XP	Chicago, Illinois	5.0	Be; relays WENR	5,140 58.37 FMV	La Ceiba, Honduras	0.1	Phone
6,100 49.20 YTC	Belgrade, Yugoslavia	2.5	Broadcast	5,110 58.71 KIKB	Bandoeng, Java, D. E. I.	0.6	Broadcast
6,098 49.20 ZTJ	Johannesburg, S. Africa	5.0	Broadcast	5,105 58.76 KEC	Bolinas, Calif.	40.0	Phone
6,097 49.20 HJ4ABE	Medellin, Colombia	0.1	Broadcast	5,025 58.70 ZFA	Bolinas, Calif.	40.0	Phone
6,090 49.26 ZB7F	Ibagu, Colombia	.....	Broadcast	5,000 60.00 WWV	Hamilton, Bermuda	1.5	Phone
6,090 49.26 HJ4ABC	Toronto, Ont., Canada	0.5	Broadcast		Belleville, Md.	1.0	Frequency Standard; Tue. Wed., Fri.; noon, 1 p.m. E.S.T.
6,090 49.26 CRXC		.....	Broadcast	5,000 60.00 ZUD	Pretoria, S. Africa	.....	Experimental
6,085 49.30 HJ5ABD		.....	Broadcast	4,975 60.30 GBC	Rugby, England	5.0	Phone to ships
6,083 49.32 VQ7LO	Nairobi, Kenya, Africa	1.0	Broadcast	4,820 62.24 GDW	Rugby, England	15.0	Phone to U.S.
6,080 49.34 ZHJ	Penang, Straits Settlements	0.05	Broadcast	4,795 62.56 VEBK	Vancouver, B. C.	0.25	Broadcast
6,080 49.44 CP5	La Paz, Bolivia	.....	Broadcast	4,783 63.11 WOY	Lawrenceville, N. J.	20.0	Phone
6,079 49.43 W9XAA	Chicago, Illinois	20.0	Be; relays WCFL	4,753 63.11 WOO	Ocean Gate, N. J.	20.0	Phone
6,079 49.33 DJM	Zeeven, Germany	5-50	Experimental	4,610 63.08 YNJ7	Wapam, Nicaragua	0.1	Phone
6,073 49.38 HP5P	Colon, Panama	.....	Broadcast	4,610 63.08 YNJ5	Waspoak, Nicaragua	0.1	Phone
6,073 49.38 YV1RD	Maracaibo, Venezuela	.....	Broadcast	4,610 63.08 YNE	Puerto Cabezas, Nicaragua	0.1	Phone
6,073 49.37 CQX	Macao, Asia	0.5	Broadcast	4,610 63.08 YNH6	Boon, Nicaragua	0.1	Phone
6,070 49.42 V6CS	Vancouver, B. C., Canada	0.01	Broadcast	4,505 63.16 HRW.			
6,070 49.42 CP3RX	Toronto, Ontario	1.0	Broadcast				
6,070 49.42 HJ3ABF	Bogota, Colombia	0.1	Broadcast	4,600 63.22 HC2ET	La Ceiba, Honduras	0.1	Phone
6,067 49.45 VPB	Colombo, Ceylon	.....	Broadcast	4,465 63.19 CFA2	Guayaquil, Ecuador	0.4	Broadcast
6,063 49.46 XEXE	Mexico, D. F., Mexico	.....	Broadcast		Canada	15.0	Phone
6,060 49.50 OXY	Skamlebek, Denmark	0.5	Broadcast	4,355 68.95 IAC	Coltano, Italy	56.0	Phone
6,060 49.50 W3XAL	Cincinnati, Ohio	10.0	Be; relays WLW	4,273 70.21 RV15	Khabarovsk, U.S.S.R.	20.0	Broadcast
6,060 49.50 HJ3ABD	Philadelphia, Pa.	10.0	Be; relays WCAJ	4,107 73.05 HC3B	Quito, Ecuador	0.5	Broadcast
6,060 49.50 HJ3ABD	Bogota, Colombia	1.0	Broadcast	4,100 73.17 LKJ1	Jeloy, Norway	1.0	Experimental
6,060 49.59 XEXF	Mexico, D. F., Mexico	.....	Broadcast	4,097 73.25 WND	Hismah, Fla.	0.4	Phone
6,048 49.63 XETW	Mexico, D. F., Mexico	.....	Broadcast	4,002 74.77 CT2AJ	San Miguel, Azores	0.5	Amateur; be.
6,043 49.65 HJ1ABQ	Barranquilla, Colombia	0.15	Broadcast	4,000 75.00 CT3AQ	Funchal, Madeira	.....	Broadcast; esp.
6,040 49.67 W4XB	Miami Beach, Fla.	2.5	Be; relays WIOD	3,175 94.48 YNJ7	Wapam, Nicaragua	0.1	Phone
6,040 49.67 H19B	Santiago de los Caballeros, D. R.	0.1	Broadcast	3,175 94.48 YNJ5	Waspoak, Nicaragua	0.1	Phone
		.....	Broadcast	3,175 94.48 YNH6	Boon, Nicaragua	0.1	Phone
6,040 49.67 W1XAL	Boston, Mass.	5.0	Broadcast	3,170 94.48 YNE	Puerto Cabezas, Nicaragua	0.1	Phone
6,040 49.67 YDA	Tandjongprik, Java, D. E. I.	10.0	Broadcast	3,800 75.95 ZPI	Ausson, Paraguay	.....	Broadcast
		.....	Broadcast	3,770 75.56 HBNB	Basle, Switzerland	.....	Broadcast
6,033 49.72 HJ4ABP	Medellin, Colombia	.....	Broadcast	3,525 85.11 HB9AQ	Lausanne, Switzerland	.....	Broadcast
6,030 49.75 OL82B	Podebrady, Czechoslovakia	25.0	Broadcast	3,378 88.83 HJ43	Barranquilla, Colombia	.....	Phone
6,030 49.75 HP5B	Panama, Panama	0.1	Broadcast	3,330 92.85 YV2V	Bandjermasin, Borneo, D. E. I.	30.0	Broadcast
6,030 49.75 V9DCA	Calgary, Alberta, Canada	0.1	Be; relays CFCN		Tandjongprik, Java, D. E. I.	10.0	Broadcast
6,030 49.75 XEBQ	Manatlan, Mexico	.....	Broadcast				



*Fine quality radio tone depends on fine quality radio tubes and parts . . . . . Insist on*

**NATIONAL UNION TUBES and PARTS**  
*to get the most out of your set.*





Ted Husing recruits a mowing machine to carry himself, portable relay transmitter and engineers around the lengthy fairway of a golf club while he presents a word picture of the event.



A section of the busy news department of NBC where wired material from press associations is prepared for the air. Right: A scene from the "March of Time," a pioneer news re-enactment feature.



Walter Winchell, the Broadway columnist, Lowell Thomas and Edwin C. Hill, three long-established air commentators.



It's always news when the President and the First Lady takes to the airways. The President is shown at the left in a typical railroad platform broadcast. Mrs. Roosevelt is apparently setting a record for broadcasts by Presidents' wives.

## SAY IT WITH A SONG

**T**HAT'S what sponsors believe and they do that very thing! Only they're smart enough to have talented men and women do it for them. On these pages are representative vocalists who are responsible for the tunes you hum to yourself after a night of radio listening. This branch of radio, particularly, offers big opportunities to newcomers.

The Revelers, a pioneer air quartet that's still going strong.



"Autograph please!" is the request and Lucille Manners and Lanny Ross are seen obliging.



Del Casino and Loretta Clemens, whose voices are known from coast to coast.



And Harriet Hilliard and Don Ross, two more top-notch mike vocalists. Left: Recognize her! It's Martha Tilton, the girl on the cover. She's featured with Benny Goodman's Orchestra.





Songstresses Dorothy Arnold and Sylvia Froos, who have "an eye" as well as "ear" appeal.



Left to right: Claire Sherman, Jack Baker and Joan Edwards, popular network songsters. And below, left to right, are Lucy Monroe, Jane Froman and Ethel Shutta, whose voices have wide followings.



Right: A scene such as this can only occur in a dream or in a Hollywood musical talkie. In this case it's the latter. And in the foreground is Kenny Baker, the young singer who "made the grade" cinematically as well as microphonically.



## YE OLDE FAMILY ALBUM

**H**ERE are some photos from the family albums of your air favorites. Can you identify them from these photos taken when they were young? See how good your guess is before you look at the captions on the lower right.



2. She's known as "The Nitwit of the Networks." She looks innocent enough here but she turned into radio's leading exponent of daffy humor.



1. This girl's name comes to mind whenever you hear "Shine on, Harvest Moon." The young man at the right scored his greatest mike success with the aid of a gong. He's pictured here as a young yachtsman making a formal (see the hat!) call on neighboring boats.



1. He's popular as a dance conductor, singer and variety show director. He looks the same today (outside of the haircut!)



3. These two lads used burnt cork and a Harlem dialect to gain fame.

## OF COURSE YOU KNEW!

1. Rudy Vallee.
2. Gracie Allen.
3. Freeman Gosden (Amos) and Charles Correll (Andy).
4. Ruth Etting and Major Bowes.



Don't  
Monkey  
with your  
RADIO



Call us for  
RADIO  
SERVICE  
ALL WORK  
*Guaranteed*



*We recommend...*

NATIONAL UNION

RADIO TUBES  
CONDENSERS



# CALL US FOR RADIO REPAIRS

*Guaranteed Work on All Makes*



If your radio hums, buzzes, crackles, fades or stops playing altogether, call us!

We have scientific instruments which quickly locate radio troubles and show us exactly what must be done to cure them.

We are experts with a broad training in the science of radio repairs and are equipped to cope with problems on all makes of sets.

We use quality parts in all of our work and guarantee every job fully.

Our charges are reasonable and our service is fast.

Call us for radio repairs at any time and be assured of full satisfaction.

**ERNEST VOORHEES**

*Your Radio Dealer*

**BRINGHURST, INDIANA**