

RADIO PROGRAMS

10c

"Around the Clock, Hour By Hour"

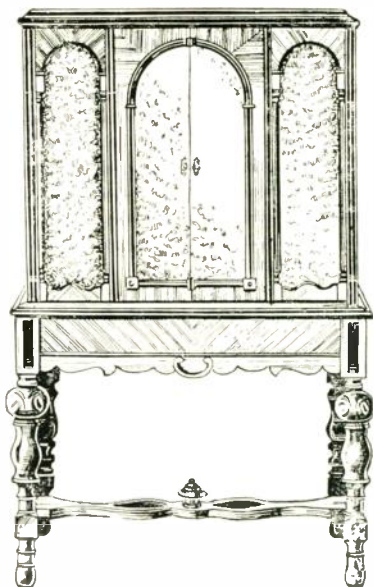
Vol. 1 Oct. 13 to 20, 1929 No. 1



The New
BOSCH

**NEW CHASSIS
NEW DYNAMIC
SPEAKER**

**Beautiful New
Cabinets
Using Three
SCREEN GRID
TUBES**



Our liberal Trade-in Allowance and
Low Monthly Payment Plan
Makes it easy for you to own a new
BOSCH

Model No. 149

Phone HUmbolt 6891

And a Bosch Radio will be installed in your Home
FOR YOUR APPROVAL

The Avalon Radio Shops
*Los Angeles Largest Exclusive
Radio Dealer*

—Five Convenient Stores—

Mention **RADIO PROGRAMS** and we will install a
Preston \$8.00 Ground, **FREE** with your New Set

Radio Programs

"Around the Clock, Hour by Hour"

Published Weekly by

RADIO PROGRAMS PUBLISHING CO.

BEacon 4659

1133 Venice Blvd.

Los Angeles, Calif.

Every Issue a Listeners Guide and Call Book

VOL. I.

OCTOBER 13, 1929

No.1

CONTENTS

Editorial	3	Programs—Hour by Hour.....	11
Radio News	4	Radio's Hall of Fame, 1st Section.....	17
News from the Studios.....	7	Football Schedule	24
Sport Section	8	Radio's Hall of Fame, 2nd Section.....	29
Theatre News	10	Station Logue	45
		Alphabetical Call List.....	46

***On Sale at Newstands at 10c Per Copy.
Subscription \$3.00 Per Year.***

*Use this Coupon and be sure of having
RADIO PROGRAMS every week.*

RADIO PROGRAMS PUB. CO.,

1133 Venice Blvd.

Los Angeles, Calif.

Please enter my subscription for **Radio Programs** for
1 year. I enclose \$3.00.

Name

Address

City and State

In La Salle Tubes you find the Secret



The Builders of this
Tube have proved to
the Radio World that
you MUST have

High Vacuum Tubes for Good Radio Reception

Manufactured under License of R C A

HIGHER QUALITY
The Result of High Vacuum

La Salle Radio Corporation

N. B. KNIGHT, Branch Manager

LOS ANGELES BRANCH

Phone WE 6498

1354 So. Hill Street

EDITORIAL



WITH this, the first issue of RADIO PROGRAMS WEEKLY, an entirely different and new radio publication is presented for the approval of the radio set owner and listener. The aim and intention of the publishers is to furnish a complete and up to the minute radio program which will be accurate, instructive and of service to those who care to choose their radio programs as they would choose any other evenings entertainment.

Any hurried glance through the contents and programs, will convince you that at last a practical, worthwhile schedule of radio entertainment has been produced. You will note that our method of listing the various features day by day and HOUR by HOUR, makes it a very easy matter to choose for yourself the outstanding program of the hour. There is no lost time looking through the programs of many stations, choose your radio program as carefully as you would choose any evenings entertainment and be assured that all the outstanding broadcasts of the day are called to your attention.

It will be of interest for all radio listeners to note that the special features incorporated in this magazine make it a practical call book and ready reference to all radio stations, both in the United States and foreign countries. Each issue will carry an up to the minute listing of all stations and pictures and stories of their featured artists. The Sports section will from week to week carry stories of the forthcoming athletic events which are to be broadcast. The Theatrical section will keep you posted on the theatre broadcast from different theatres and will review the outstanding events at the leading moving picture theatres as well as those of legitimate stage. Many other features will be incorporated which cannot help but be of interest to those who appreciate radio as it is brought to your home today.

RADIO PROGRAMS WEEKLY is to be strictly a fans magazine, endeavoring each week to bring to your home only the features which we think will be of interest to you. We sincerely trust that you will like our new magazine and realize we propose to make RADIO PROGRAMS WEEKLY the outstanding Magazine for listeners. Naturally we shall appreciate your comments and suggestions for its betterment from week to week.

RADIO

Interference—the Bugaboo of Radio

By G. R. Walters

The winter season is almost here. With it will come the lure of distant reception, the temptation to sit in a warm, comfortable room and reach out over mountains and valleys, over seas and oceans; to hurdle international boundaries; to listen and learn and be amused.

The combined imaginations of Jules Verne and Jack London guiding the hand of the greatest artist who ever touched brush to canvas, could not paint a more alluring, entrancing picture than the one which radio lays at your feet.

The performance of artists whose lives spell privation and practice, hardships and self denial, work and persistence to equip themselves for your amusement. Violins mellowed with age bringing to the intimacy of your fireside the music of masters whose bones have crumbled with the years that have passed since they wrote the scores for the generations that were to come. Lectures from the intellectuals of the living civilized world. All of this and more coming to you with the compliments of someone—broadcasting stations, hundreds of them, begging for your attention, outdoing each other in a frantic effort to receive from the listening public only good will and a portion of their patronage.

It is wonderful to know that all of these things are in the air, somewhere, and it would be more wonderful still to be able to tune them in, but, there are several obstacles in the way. Distant reception is not always possible in any location with any receiver.

Not long ago the writer flew to Los

Angeles from San Diego, arriving after dark. As we approached the city there was spread out, below us, a picture which will linger always. Millions of lights, miles and miles of wire to feed them. Thousands of signs blinking on and off; street cars creeping to and fro; homes, countless numbers of them, with switches and lights and appliances of all kinds.

Huge office buildings towering upward into the night; massive apartments with elevators and oil burning furnaces. And as we floated along toward the Glendale Airport I thought how every lamp and socket, every appliance and switch, every foot of wire inside and out of buildings, every mile of transmission line, from the generating plants perched high in the mountains, where snow and ice are turned to light and heat, is a potential source of radio interference.

Below me, I thought, are upward of two hundred thousand radio receivers bought, primarily, for amusement. The owners little realize what an enormous task it is to keep the air free from the thing we call interference. It calls for co-operation of the highest order, maintenance and construction standards revamped, since radio came, for the benefit of the radio industry, tolerance and patience from the public and extreme care from the dealers in the matter of installations.

For over two years the Interference Committee of the Radio Trades Association have been meeting to discuss ways and means to help the Radio listeners. Utilities, who are members of that committee, have subscribed both money and their services to the general plan which we are working out. The Broadcasters are doing their part by supplying programs which cannot be excelled no matter where you look nor where you fish for distant reception.

The Utilities have done and will continue to do all within their power to

build lines and maintain equipment in such a manner that they will not interfere. The responsibility of a Utility ends at the meter. Beyond that point all wire and every appliance is privately owned. For some reason the public seems to feel justified in calling a utility regardless of what may be wrong.

A tremendous number of complaints could be corrected by the proper installation of an antenna and ground. Surveys, extending over the past two years, have proven that the major portion of all interference, local in character, reaches the greatest intensity near the earth. The necessary antenna and ground system to combat this is not expensive.

If your reception is poor and you want to improve it call your dealer and ask him to explain the merits of a shielded antenna and ground. There is nothing patented about it for there is nothing to patent. We are not selling a thing because the Radio Trades Association has nothing to sell but memberships. We are only trying to bring you more enjoyment out of your radio investment and reduce complaints.

No matter where you live, irrespective of what your interference problem may be, if you are willing to spend a little money to improve reception, this installation will help, if it will not cure.

If your dealer is not familiar with these specifications, tell him to call the Radio Trades Association of Southern California, TUCKER 1171 and we will send them to him without cost together with instructions on how to install this antenna and ground—and why.

Chain Broadcasting Order Postponed by Radio Commission

Postponement of the date of the chain broadcast order which would limit duplicated operation of chain programs on cleared channels to stations more than 300 miles apart, has been ordered by the Federal Radio Commission.

The Commission, has directed the

order remain inoperative until Dec. 31, 1929.

Originally, the regulation was drafted as a suggested means of coping with the problem presented by duplication of chain programs on the listener's dial.

Programs broadcast through the Pacific network of the National Broadcasting Company can be sent in only one direction. So long as entertainment is being released from the San Francisco studios, the intricate network of wires connecting the six stations operates as the circuit stands. If a program is to be "picked up" at Seattle, Los Angeles or another point, it is necessary to make a complete reversal of the circuit. This difficult task is accomplished during the brief interlude after the announcer has said, "There will now be a brief pause for station announcements."

ANNOUNCER

Wm. J. ANDREWS

Pity the poor announcer when the Land O'Health programs are on the air!

William J. Andrews, who for more than a year has been at the "mike" during these weekly child nutrition broadcasts from the NBC San Francisco studios, not only fulfils his duties as announcer during these half hours but also acts as chief property man. Upon him falls the task of supplying every sound effect needed to suggest anything from "Soo Cow" to thunder and an avalanche. No orchestral drummer with his traps nor anyone else is in the studio to assist him.

Mechanical devices are employed by Andrews when the script calls for the noises of an airplane, thunder, code messages, an auto stage, trains, a ferry boat, a blimp, a submarine, an avalanche, wind, a duck, mining machinery, birds and fairies. Of course, not all of these are employed on any one program.

Andrews himself imitates "Soo Cow" and a lion when these are needed.

Besides supplying all of these effects, Andrews has taken the parts of about ten different characters who participate in the Land O'Health travels.

RADIO ON TRAINS

As a result of experiments showing that radio reception aboard moving railroad trains is feasible, says the United States Daily, one of the leading French railroads will equip three of its principal express trains with radio receiving sets, according to a report from Paul D. Thompson, American vice consul at Paris, made public Sept. 18 by the Federal Radio Commission.

The report was transmitted to the Department of State, and referred to the Radio Commission. It follows in full text:

A radio receiving apparatus recently functioned successfully in a moving train for the first time in France. The experiments were carried out early in August on the line of the French State Railway between Paris and Havre.

As a consequence, this railway expects to equip with radio sets three of

its principal Paris-Havre express express trains, those leaving Paris at 8 a. m., 5:05 p.m. and 7:55 p. m. A radio engineer, installed in a special cabin, will supervise the reception of the radio programs on these trains. A headpiece will be made available for each passenger, at first only in first and second class coaches, but eventually it is planned to extend this service to the third class.

A charge will be made to each user of the service varying between 10 and 20 francs (\$0.40 to \$0. 80). The programs of Radio Paris, the Eiffel Tower, Daventry, England, and other European stations may be heard by the ordinary traveler seeking to relieve the monotony of travel, while the quotations on the Paris Bourse will be made available to the business man, so far as they are broadcasted.

AVALON RADIO SHOP

The Avalon Radio Shops, a chain of Five Retail Radio Stores, operating in the Southwest portion of Los Angeles are making rapid strides in the merchandising methods for their district, featuring ten popular lines of receivers: Sparton, Majestic, Apex, Bosch, Philco, Edison, Courier's Kylelectron, Zenith, Atwater-Kent and Earl. They have a radio receiver to meet every home need and family budget.

In commenting about the progress made in the last year, A. F. WILKINS, the head of this wide awake organization says: "Service and Satisfaction is our guarantee with every radio we sell, and everything possible is done to make every buyer a permanent customer. We have a fleet of fast delivery and service cars and each is manned by efficient and courteous workmen."

This firms beginning four years ago in one corner of a Real Estate office on Avalon Blvd., as a one man shop doing repairing, has now grown to be the Largest Exclusive Retail Radio Organization in the city. Mr. Wilkins says he will continue his policy of opening branch stores throughout the city. With his large volume of business he is able to give more to the customers in the way of service to make each customer a satisfied one.

Long before daylight recently, the Hicks family of Tacoma, Wash., arose and gathered around the family loud-speaker. They listened intently, and soon they were rewarded by hearing the voice of their son, George F. Hicks of the NBC Washington studios, who had been called to Lakehurst, N. J. to assist Graham McNamee and William S. Lynch of the New York studios in broadcasting the arrival of the Graf Zeppelin from Los Angeles through a coast-to-coast network.

The Pacific Division of the National Broadcasting Company employs 1709 miles of telephone wire to transmit programs from the San Francisco studios to the half-dozen affiliated stations. This network is contacted at San Francisco, Spokane and Los Angeles with the three coast-to-coast lines which bring programs from New York, Washington, Chicago and other Eastern cities.

An olio, the second "movement" of the old-time minstrel show, will be instituted as a regular feature of the NBC Cotton Blossom Minstrels, according to Charles Marshall, producer. The show now will follow perfectly the program of the original minstrel shows, opening with a comedy and closing with a sketch.

NEWS FROM THE STUDIOS

State Audition to be Heard Over KPO

MONDAY EVENING, OCT. 21st
10:00 to 12:00 O'CLOCK

Winners of the Atwater Kent Foundation's Local Auditions will vie with each other in the State Audition which will be held at KPO, Monday Evening, October 21st, 10:00 to 12:00 o'clock. Radio fans throughout the state will be able to hear the voices that have been adjudged the best in various localities as they sing for the honor of representing the State in the District Audition which will also be held at KPO, Monday evening, Nov. 18th, 10:00 to 12:00 o'clock. Ten scholarships and \$25,000.00 in cash will be awarded to the winners of the National Audition which will be held in New York.

NOTES FROM KGW

Ted Roy, Oregon's Singing Blacksmith, who left KGW recently to study in Philadelphia, is scheduled to sing in the Atwater Kent Hour over a nationwide hookup of NBC stations in the near future.

Mrs. Sid Goodwin, wife of KGW's sport announcer, has found out how famous her husband is. The other day she went to the ball game. Sid was not there. In the box back of here were two women who punctuated their comments with "as Sid says." Finally one of them saw a man enter the next box. "Oh, there's Sid," they cried. Mrs. Goodwin listened during the rest of the game to their plans for walking right up to the man and kissing him. It began to rain, however, and Mrs. Goodwin left without seeing what happened to the poor, innocent stranger.

Radio World's Fair to Hear Model Station

The Radio Victor Corporation of America has filed an application for permission to operate temporarily a broadcasting station at the Radio World's Fair to be held in New York City throughout the week beginning Sept. 23, it was announced by the Federal Radio Commission.

The transmitter, operating on a frequency of 545 kilocycles (550 meters), would use 50 watts power. It would be installed at Madison Square Garden "for exhibition purposes," the application stated.

Paul Heitmeyer, KGW executive who ran his car some distance along the ocean floor while on his vacation, announces that the car is running again after a couple of hundred dollars worth of fixing. Most of the upholstery was dissolved by the brine.

Not to destroy any budding romances, but Max Dolin, NBC Musical Director, is married and has two handsome sons so the generous supply of "proposals" he receives from enthusiastic "fans" are quite out of order.

ELECTRO FLEX 5-TUBE ALL ELECTRIC RADIO

Genuine-Magna-Coil Speaker
SINGLE DIAL
HANDSOME MAHOGANY
SPEAKER
\$39.50

PHAIR RADIO

242-244 E. Florence Ave.
Los Angeles, Cal.
740 Pine St. Long Beach, Cal.

SPORT SECTION

SPORTS of all kinds, have always played an important part in our lives. In these days of radio those who are inclined to be interested in athletic events have considerable variety from which to choose. All major events whether of local or of National interest are brought direct to your fireside by the medium of radio. People living in this day of strain and competition in the business world need and enjoy sporting events. There are many who do not take the time or for various other reasons can not attend or participate in their favorite sports turn to the radio to partake in spirit if not physically. Through these columns each week we will call attention to the major sport broadcasts of the week.



Glen Rice

Glen Rice, "All American Football Announcer," who will broadcast the seasons football games from the Coliseum through Station KNX. Glen Rice will be remembered by many as one of the most popular football announcers on the Pacific Coast.

FOOTBALL

All the coming season's football games played at the Los Angeles Coliseum are to be broadcast over KNX in a series of programs sponsored by Walter M. Fagan, president of Pacific Wholesale, Inc. and local Sparton distributor.

"With Glen Rice, veteran and popular football announcer, at the 'mike'," says Fagan, "we anticipate a broadcast program which will bring the color and excitement of the games to the radio fans, as well as the accurate play descriptions. There are many football fans who will find themselves unable to get to the games themselves. To them we hope to bring the next best thing—a broadcast teeming with the thrills and drama of the games. I am confident that these programs will be outstanding in merit."

Sponsoring of this broadcast series by Fagan is in line with the established Pacific Wholesale program of bringing

to radio fans the more important events of Los Angeles and Southern California. Already this policy has been exemplified this year in his programs of the New Year's football game at the Pasadena Rose Bowl, the Easter Sunrise Services at Hollywood Bowl, the premiere of Mary Pickford's great talkie "Coquette" and other events of prominence.

Football enthusiasts on the Pacific Coast will hear the broadcast of Conference and other important games of the 1929 season through National Broadcasting Company stations, it was announced today by the Associated Oil Company, sponsors of these broadcasts.

Following is the schedule:

October 12—University of Southern California vs. Washington at Seattle
KOMO, KGW, KFI.

October 19—Washington vs. Washington State at Pullman, Wash.
KHQ, KOMO.

October 26—Washington vs. Oregon at Seattle.
KOMO, KGW.

October 26—University of Southern California vs. Stanford at Palo Alto.
KPO, KFI.

November 2—University of Southern California vs. California at Los Angeles.
KPO, KFI.

November 2—Oregon State vs. Washington State at Portland.
KOMO, KGW.

November 9—Stanford vs. Washington at Seattle.
KHQ, KOMO, KGO.
KOMO, KPO, KFI.

November 23—Stanford Vs. California at Palo Alto.

November 30—University of Southern California vs. Washington State at Los Angeles.
KHQ, KOMO, KFI.



Curtis Benton

Curtis Benton well known sports Announcer who is heard every Friday Night over KNX. Curtis has many devoted followers who listen to him every Friday giving description of the Fights at the American Legion Stadium.

WORLD'S SERIES WILL BE ON KHJ

The answer to a sportman's prayer will come during the days following October 8 when the details of the world's series baseball games from Wrigley Field in Chicago and the Athletics' ball park to Philadelphia will be given over station KHJ.

The scheduled games for October 8, 9, 10, 11, 12 and 14 will continue for any days needed thereafter and, according to the studio announcement, will be changed according to eastern conditions and will take the place of whatever is listed on the studio program at that time.

FOR SPARTON RADIO ~ J. E. BUSHARD

1717 W. ADAMS ST.

PHONE BE acon 2456

LIBERAL TRADE IN TERMS

THEATRES

"Cock-Eyed World" at Grauman's Chinese

"The Three Loves of Two Men" might well be another title for "The Cock Eyed World," the town's reigning sensation at Grauman's Chinese Theater.

In three different climes Sergeants Flagg and Quirt, played respectively by Victor McLaglen and Edmund Lowe, and their love calls answered. In coldest, darkest Russia, they meet Olga, the Rambling Rose; in dizzy, sparkling Coney Island they find Fanny, the flaming coquette; and in the hot, blazing Tropics they learn about love from Elenita, played by Lily Damita.

One might easily add to the large number of romances in this William-Fox-Raoul Walsh Movietone masterpiece, pointing out the two or three love affairs indulged in by El Brendel, in the role of Olsen, to say nothing of many other minor ones.

All of which may account for the large and ever increasing percentage of the fair sex who are helping to make capacity audiences at Grauman's Chinese Theater.

Its first week's run came perilously near establishing a new local record. Its appeal is universal. Men and women of every age and every walk of life are hilariously entertained by this picture with its delightful episodes, its real genuine pathos, thrills and every ingredient that goes to make it the top notch all talking entertainment on the screen to-day,

Victor McLaglen, Edmund Lowe, Lily Damita and El Brendel are co-featured and the supporting company may well be called of the all star variety, including such well known performers as Bobby Burns, Lelia Karmelly, Jean Bary, Ivan Linow, Solidad Jimenez and many others.

Hallelujah to Open at the Fox Palace

"Hallelujah" will open at Fox-Palace on October, 16.

The theater is to emerge from that which is now known as the Broadway Palace, but which theatergoers of a decade since will remember as the Orpheum. On October 6, the house will be closed for ten days. Decorators and furnishers will take possession, with an ad lib injunction which promises to evoke one of the most gorgeous downtown film houses.

The film is that much-heralded opus by King Vidor.

With its tale of the present-day South, its singing, dancing and "lovin'" negroes it will present a novelty in entertainment. Eastern critics have already commented enthusiastically on the picture, which is said to portray the plantation life of the Southern negro of today with fidelity.

The advent of this film here will be of wide interest. Mr. Vidor stepped into an untrodden path when he conceived and executed this picture, and his daring in the beginning is said to be well justified by the success of the finished film. An all-negro cast will be seen and heard in the singing-dancing numbers always expected of the race. But the tense drama and comedy moments of the picture, too, have evoked flattering comment from those critics who saw it recently in the East.

Nina Mae McKinney, vivacious 17-year-old youngster, who is said to be the "Clara Bow of her race," is an important figure in the picture, and will make a personal appearance on the occasion of the local premiere and the opening of this new house. A two-a-day policy, with reserved seats, is to be established when Fox-Palace opens its doors, and the advent of such a theatre on Broadway is attracting much attention from theatre folk generally, as well as from the fans.



SUNDAY, OCTOBER 13

8:00 A. M. to 9 A. M.

KEJK—Kelly Kar Program
 KFOX—Remote Control KGFZ
 KFQZ—Breakfast Program.
 KFVD—Popular Program
 KGER—Dick Dixon at Wurlitzer Organ
 KGEJ—Recordings
 KHLJ—Don Lee Inc. Program
 KMTR—New Idea Man's Wholesome Food
 Breakfast Club
 KTM—Records
 KFWB—The Funny Paper Man.

9:00 A. M. to 10:00 A. M.

KDYL—"Good Morning" and Old Melodies
 KEJK—Kelly Kar Co.
 KFOX—Concert Orchestra and Light Opera
 (Records)
 KFQZ—Cambria Pines Program
 KFVD—Organ Recital Program
 KGER—Dick Dixon at Wurlitzer Organ;
 9:30 Taubman Men's Bible Class
 KGEJ—Recordings
 KHLJ—Pacific States Sav. & Loan Program
 (from KFRG)
 KMTR—Tuneful Tunes
 KXX—Musical Recordings
 KTM—Watchtower Program
 KTAB—Dr. Corley.
 KFWB—Late Recordings through courtesy
 Dan Parker, the tailor.

10:00 A. M. to 11:00 A. M.

KDYL—Concert Sketches
 KEJK—Musical Program
 KFOX—L. A. Church Federation Program
 KFQZ—Organ Recital from Merithews
 KFQZ—West Pico Furniture Co. Program
 KFSO—Novelty Hour
 KFVD—Beauty Talk
 KGER—Taubman Men's Bible Class; 10:15
 Violin Music
 KGEJ—Organ Recital from KFOX
 KHLJ—Pacific States Sav. — Loan Program
 (from KFRG)
 KMTR—Tuneful Tunes
 KXX—Musical Program of Recordings
 KGW—International Bible Students
 KTAB—Bible Class.

11:00 A. M. to 12:00 A. M.

KDYL—Echoes of the Organ
 KEJK—Musical Program
 KFOX—St. Luke's Episcopal Church
 KFSO—Nash Whitewood Popular Hour
 KGER—Violin Music, 11:15 First United
 Presbyterian Church Services
 KGEJ—Studio Hour, Lella Isbell, pianist
 KHLJ—First M. E. Church of Los Angeles
 KMTR—Tuneful Tunes
 KXX—First Presbyterian Church of Holly-
 wood
 KGW—Sunnyside Congregational Services
 KTAB—Services from the Tenth Avenue
 Baptist Church.

12:00 A. M. to 1:00 P. M.

KDYL—Noon Day Rhythm

KEJK—Musical Program; 12:30 to 1:00 Pro-
 gram for Tarpezone Co.
 KFOX—St. Luke's Episcopal Church; 12:30
 Musical Program
 KFSO—Old Time Program
 KGER—12:15 Classical Music
 KGEJ—Studio Four; 12:30 Harmonay Ha-
 waiians, Gladys Parish, blues, Blanche
 Cooper, piano.
 KHLJ—First M. E. Church of Los Angeles;
 12:30 Tarpezone Trio.
 KMIC—12:30 Records
 KMTR—Rhythm Offerings
 KXX—First Presbyterian Church of Holly-
 wood; 12:30 Automobile Buyers Guide
 —Musical Program.
 KGW—Sunnyside Congregational Service to
 12:30.
 KTAB—Chapel of the Chimes.
 KFWB—Late Recordings through courtesy
 Dan Parker, the tailor.

1:00 P. M. to 2:00 P. M.

KDYL—CBS Symphonic Hour—well known
 classics by large symphony orchestra.
 KFOX—Hollywood Girls Novelty Trio.
 KFQZ—L. B. Hair Tonic Program.
 KFSO—Old Time Program to 1:30.
 KFVD—"Inspiration," the Magazine of the
 Air.
 KGER—Popular Music.
 KGEJ—Harmony Hawaiians; Gladys Par-
 ish, blues; Blanche Cooper, piano.
 KHLJ—Tarpezone Trio; 1:30 Program from
 KFRG.
 KMTR—Rhythmic Offerings.
 KXX—International Bible Students Asso.
 KTM—Bertie Kober, organist.
 KGW—1:30 Organ Recital.
 KTAB—Church of the Latter Day Saints.

2:00 P. M. to 3:00 P. M.

KTAB—Recordings.
 KDYL—CBS "Cathedral Hour"—sacred
 musical service.
 KFI—2:30 (NBC) Sunday Musical Concert.
 KFOX—Broadway cast KGEJ; 2:30 Long
 Beach Municipal Band.
 KFSO—2:30 Organ Recital from Balboa
 Park.
 KFVD—Sacred Half-hour.
 KGER—Edna Bond, popular singer; 2:30
 Long Beach Municipal Band.
 KGEJ—Harmony Hawaiians; 2:30 Long
 Beach Municipal Band.
 KHLJ—Recordings.
 KMTR—Rhythmic Offerings.
 KXX—City Park Board—KXX Rounders;
 Newman's Russian Orchestra.
 KTM—Lucy Day, soprano; Bertie Kober,
 organist; 2:30 Santa Monica Band.
 KGW—Organ Recital; 2:30 (NBC) Sunday
 Concert.
 KTAB—Santa Clara-St. Ignatius Football
 Game Broadcast from Kezar Stadium
 by Willard Kimball.

3:00 P. M. to 4:00 P. M.

KDYL—"The McKesson News Reel of the
 Air"; 3:30 Popular Period of Requests
 KEJK—Sunday Afternoon Musicale; 3:30



Choir from Church of Latter Day Saints—Dr. James Talmage, Speaker.
 KFI—(NBC) Sunday Musical Concert; 3:30 (NBC) Whittall Anglo Persians.
 KFOX—Long Beach Municipal Band.
 KFQZ—Popular Recordings.
 KFSD—Organ Concert from Balboa Park to 3:30.
 KFVD—Auburn Program.
 KGER—Long Beach Municipal Band.
 KGFJ—Long Beach Municipal Band.
 KHJ—Records; 3:15 Art Fadden (KFRC) Pianist with Personality.
 KMTR—Rhythmic Offerings.
 KNX—KNX Rounders and Robt. Newman's Russian Orchestra.
 KTM—Santa Monica Band Concert; 3:30 Special Recording Program.
 KGW—(NBC) Sunday Concert; 3:30 Whittall Anglo Persians (NBC).

4:00 P. M. to 5:00 P. M.

KDYL—4:30 CBS Our Romantic Ancestors.
 KFI—Margaret Ruth Kernan, soprano; 4:30 Lella Castbery, "Advanced Thought."
 KFOX—Organ Recital from Merithews.
 KFQZ—Calif. Aerial Transportation CO. Program.
 KFVD—De Witt Hegar's Program.
 KGER—Studio Program.
 KGFJ—Quality Serenaders.
 KHJ—Records; 4:30 Rabbi Edgar Magnin.
 KMIC—4:30 Popular Program.
 KMTR—Rhythmic Offerings.
 KNX—Robt.'s Golden State Band; 4:30 1st Radio Church of the Air.
 KTM—Special Recording Program; 4:30 Popular Records.
 KGW—Baby Boudoir; 4:15 "Book Chat"; 4:30 Studio.

5:00 P. M. to 6:00 P. M.

KDYL—Varieties; 5:30 CBS French Trio and Guest Soloists; 5:45 CBS "The World's Business"—Dr. Julius Klein.
 KFI—Genevieve Behrend "Science of Life" 5:15 (NBC) Collier Hour.
 KFOX—Studio Orchestra; 5:30 Doris, Grace and Foster—popular songs.
 KGER—Frank Waller Alline "Things Worth While"; 5:20 Vesper Hour, Mrs. Austin Trumbull, organist.
 KGFJ—Quality Serenaders.
 KHJ—Tea Time Three (from KFRC); 5:30 (CBS) Sonatron Program.
 KMIC—Popular Program.
 KMTR—Sunset Hour; 5:45 Miniature String Players.
 KNX—1st Radio Church of the Air to 5:30.
 KGW—Dental Talk; 5:15 Collier Hour (NBC).
 KTAB—Chapel of the Chimes.

6:00 P. M. to 7:00 P. M.

KTAB—Edison Hour.
 KDYL—Popular Recordings; 6:15 KDYL Artists at the Studio; 6:30 CBS Sonatron Program—Art Kahn and his Sonatrons.
 KFI—Collier Hour; 6:15 (NBC) Atwater-Kent Program.

KFOX—Em and Clem; 6:30 Std. Orchestra.
 KGER—News Bulletins, Long Beach Sun; 6:15 Bible Class; 6:45 Violin and Guitar; "Doc and Ray."
 KGFJ—Harmony Hawaii Trio.
 KHJ—(CBS) Majestic Theater of the Air.
 KMIC—Popular Program to 6:30.
 KMTR—The Miniature String Players.
 KNX—Talk by Ernest Holmes; 6:30 Dr. Curtis Abel.
 KTBI—Studio Vesper Program.
 KGW (NBC) Collier Hour; 6:15 (NBC) Atwater Kent Hour.
 KTAB—Dr. Tindall.
 KWFB—Harry Jackson and his Pig'n Whistle Entertainers by remote control.

7:00 P. M. to 8:00 P. M.

by remote control.
 KFWB—Burr McIntosh the Cheerful Phil.
 KTAB—Maria Laiolo, soprano and Jane Sargent Sands, pianist.
 KDYL—CBS "Majestic Theatre of the Air" with Wendall Hall, Redfern Hollinshead and Arnold Johnson's Orchestra.
 KFI—(NBC) Atwater Kent; 7:15 (NBC) Studebaker Champions; 7:45 (NBC) Enna Jettick Melodies.
 KFOX—Hollywood Girls.
 KGER—Hawaii Trio; 7:30 Eddie Marble request program.
 KGFJ—Studio Players.
 KHJ—First M. E. Church of Los Angeles.
 KMTR—Piano Duos; Maurice Limonick and Mildred Wade; 7:30 Symphony Program.
 KNX—Luboviski Trio; Calmon Luboviski, violinist; Claire Mellonino, pianist; Walter V. Ferner, cellist.
 KGW—(NBC) Atwater Kent Hour; 7:15 (NBC) Studebaker Hour; 7:45 Enna Jettick Melodies (NBC).
 KTAB—Tenth Ave. Baptist Church.
 KWFB—Hollywood Athletic Club orchestra oosopher.

8:00 P. M. to 9:00 P. M.

KFWB—Time Signal courtesy Bulova Watch Company.
 KDYL—CBS Arabesque—a Modern Thousand and One Nights; 8:30 CBS Around the Samovar, Russian Music.
 KFI—Packard Concert Orchestra, Pryor Moore, director.
 KFOX—Services from First Church of Christ, Scientist.
 KFSD—Seaboard Bldg. & Loan Program; 8:30 Hotel Del Coronado Orchestra.
 KFVD—Community Program.
 KGER—Eddie Marble in requests; 8:30 Janice Simmons, violin and Margaret Underhill, piano.
 KGFJ—Recordings.
 KHJ—Program from KFRC.
 KMTR—Symphony Program "Composer's Hour"; 8:30 "From Behind the Footlights", Symphony Pro-Soloist.
 KNX—First Presbyterian Church of Hollywood.
 KTBI—Church of the Open Door.



KTM—Santa Monica Band Concert
 KGW—Bakers Enna Jetticks; 8:30 Rollickers.
 KFWB—KPSN.

9:00 P. M. to 10:00 P. M.

KDYL—KDYL, Feature Artists; 9:30 CBS Choral Reverie, organ and mixed chorus.
 KEJK—Mischa Gagna Concert Trio.
 KFI—KFI Organ Ensemble.
 KFOX—Hancock Oil Co.—Distributors Nite.
 KFQZ—Two Harmony Boys, Jo and Ian.
 KFSD—Hotel Del Coronado Orchestra.
 KGER—Herbert Nixon at Wurlitzer Organ; 9:30 Sunday Nite Frolic.
 KGFJ—Recordings.
 KHJ—Program from KFRC.
 KMTR—Symphony "From Behind the Footlights"; 9:30 Mixed Quartette and Vibraphone.
 KNX—Nunn, Bush & Weldon, Shoe Co. program; 9:15 Walker's Program.
 KTBH—Church of the Open Door; 9:15 Bible Institute Gospel Service.
 KTM—Arthur Hall, tenor; Lenore Killian, contralto; Lillyan Ariel, pianist.
 KGW—Blumauer Frank; 9:30 Montag Fire-side Hour.
 KTAB—Program of Dance Recordings.
 KFWB—Bill's Ragtime Review.
 KFWB—Harmony Hour.

10:00 P. M. to 11:00 P. M.

KDYL—Studio Time; 10:30 Popular Recordings.
 KFI—Wally Perrin's Packard Dance Orchestra, Jean Dunn, Soloist.
 KFOX—Hancock Oil Co., Distributor's Nite.
 KFQZ—KFQZ String Trio.
 KFVD—Records.
 KGER—Sunday Nite Frolic; 11:30 Herbert Nixon at Wurlitzer Organ.
 KGFJ—Recordings.
 KHJ—Program from KFRC.
 KMTR—Weather Forecast and News; 10:15 Hawaiiin Program.
 KNX—Walker's Inc. Program to 10:15
 KTM—Honolulu Foursome.
 KGW—Little Symphony Orchestra.
 KTAB—Jean Ray, contralto and Arthur Shaw, Organist.
 KFWB—Home Economics talk by Prudence Penny of the Examiner.
 KFWB—Radio Varieties.

11:00 P. M. to 12:00 P. M.

KDYL—Dance Program; Signing off and Time Report at Midnight.
 KFOX—Watch Hospital KGFJ.
 KFQZ—Al Cajal (All Request Hour).
 KGFJ—Recordings
 KHJ—Wesley Tourtellotte, Organist.
 KTM—Bertie Kober, Organist.
 KGW—Estate Weather Man.
 KTAB—The Night Owl Program conducted by Willard Kimball.
 KFWB—Dale Imes' Melody Trio.

MONDAY, OCTOBER 14

7:00 A. M. to 3:00 A. M.

KOI—Eye Opener Program.
 KDYL—"Good Morning" and The Alarm Clock.
 KEJK—Frank Raefer's Exercises.
 KFI—S & W Morning Exercises.
 KFOX—"Hello Everybody"; 7:30 Early News Items.
 KFQZ—J. V. Baldwin Motor Co. program.
 KFVD—Hal Roach "Happy-Go-Lucky Trio.
 KGFJ—Breakfast Program.
 KHJ—Physical Culture Period; 7:30 Stock Exchange Reports; 7:40 Don Lee Program.
 KMTR—New Idea Man's Breakfast Club.
 KNX—7:15 "Pep & Vigor" exercises; 7:15 "Home Folks" exercises.
 KTM—Dude Ranch (Novelty Program.
 KGW—7:45 Devotional Services.
 KTAB—Rastus and Sambo—the Eye Openers.

8:00 A. M. to 9 A. M.

KOI—Program of General Interest.
 KDYL—Breakfast Program of Waltz Tunes 8:25 Weather Report; 8:30 "Top O' the Morning Program"; 8:45 Time Report; and Fifteen Minutes with the Popular Song Writers.
 KEJK—Pot O' Gold.
 KFI—Shell Happy Time from KPO.
 KFOX—Records; 8:30 Hirshfield's High Steppers.
 KFQZ—Popular Recordings.
 KFSD—8:45 Good Cheer Program.
 KFVD—Hal Roach Happy-Go-Lucky Trio.
 KGER—"Up with the Sun" Program
 KGFJ—Breakfast Program; 8:30 Gordon Smith's Shopping Guide and Request Program.
 KHJ—"Alarm Clock."
 KMIC—Rue and Her Pals; the Commanders.
 KMTR—New Idea Man's Breakfast Club; 8:57 Time Signals.
 KNX—Records; 8:15 Inspirational Talk; 8:55 Time Signals.
 KTBH—Uncle Harry's Bible Story; 8:15 Devotional Service; 8:45 Announcer's Hour.
 KTM—Bert's Request Program.
 KGW—(NBC) Shell Happy Trio.
 KTAB—Program of Recordings.

9:00 A. M. to 10:00 A. M.

KTAB—Prayer Services.
 KOI—9:45 Talk by Dr. H. Arthur.
 KDYL—News of the World; 9:15 Housewives' Program; 9:45 Mrs. Tenny, Home Economics Expert.
 KFI—Sady Nathan, Beauty Talks; 9:15 Bess Kilmer; 9:45 (NBC) Magazine of the Air.
 KFOX—Recordings; 9:30 Hawaiian Program; 9:50 Novelty Songs.
 KFQZ—Selections.
 KFSD—Morning Musical Review.



KFVD—KFVD Travelogue.
 KGER—Popular vocal music; 9:30 Devotional Period; 9:45 Joseph Bjorndahl, baritone; Dick Dixon, organist.
 KGFJ—Gordon Smith's Shopping Guide; 9:20 Rango the Mystery Man.
 KHJ—Recordings; 9:30 Julie Wintz and Mayflower Orchestra.
 KMIC—Rae and her Pals; the Commanders.
 KMTR—Mildred Kitchen; 9:15 Tuneful Tunes; 9:30 Trade and Travel; 9:45 Tuneful Tunes.
 KNX—Radio Shopping News.
 KTBI—Announcer's Hour; 9:15 Radio Bible Course; 9:45 Home-Folks Request.
 KTM—Bert's Request Program.
 KGW—News; 9:10 Oregonian Cooking School; 9:30 The Town Crier.

10:00 A. M. to 11:00 A. M.

KTAB—Recordings.
 KOL—Sessions Chimes; Studio Program.
 KDYL—Household Hints; 10:30 Ballad Time.
 KFI—(NBC) Women's Magazine of the Air; 10:15 World's Series Ball Game.
 KFOX—Organ Recital from Merithew's.
 KFQZ—Recordings.
 KFSD—Amy Lou Shopping Hour.
 KGER—Novelties; 10:15 Cline Chittick, harmonica; 10:30 Enna Jettick Twins; 10:45 Beauty Talk.
 KGFJ—Organ Recital.
 KHJ—Agnes White "At Our House"
 KMTR—Rhythmic Offerings.
 KNX—Town Crier; 10:30 Kate Brew Vaughn.
 KTBI—Home-Folks Request Hour; 10:35 Dr. John C. Page.
 KGW—Town Crier; 10:30 (NBC) Women's Magazine of the Air.
 KTAB—Dr. B. L. Corley.

11:00 A. M. to 12:00 A. M.

KDYL—Midday Organ Recital; 11:30 Songs from the Silversheet; 11:45 Farm Flashes; 11:55 Synopsis of Evening Programs; 11:58 Weather Report.
 KFI—(NBC) World Series Ball Game.
 KFOX—Beauty Talk; 11:10 Varsity Boys; 11:30 News Reports; 11:50 Varsity Boys.
 KFQZ—popular Recordings.
 KFSD—Lloyd Peck's Service Hour.
 KGER—Mulligan Stew.
 KGFJ—Recordings.
 KHJ—Noon Patterns in Print-Varsity Program CBS.
 KMTR—The Musical Treasure Chest.
 KNX—Time Signals; 11:15 Madame Marie; 11:30 Maytag "So A Tone."
 KTBI—Dr. John C. Page; 11:30 Verna Remple, Soprano.
 KGW—(NBC) Women's Magazine of the Air; 11:30 Records.
 KTAB—Barney Lewis' Tabloids of the Air.

12:00 A. M. to 1:00 P. M.

KOL—Organ Recital; 12:30 Matinee Melodies.
 KDYL—Columbia Broadcasting System.

KFI—World Series Ball Game; 12:15 Agriculture Talk and Market Reports.
 KFOX—Records.
 KFQZ—Al Cajal and Soloists.
 KFSD—Lloyd Peck's Shopping Hour to 12:30.
 KFVD—Tom Breneman the Recommendation Man; 12:30 Tom and Wash.
 KGER—Popular Music.
 KGFJ—Recordings.
 KHJ—Biltmore Hotel Concert Orchestra; 12:30 World Wide News; 12:45 Leigh Harline, organ recital.
 KMIC—Records.
 KMTR—World News Bulletins; 12:15 Modern Bits of Music.
 KTAB—Sterling Cosmopolitan Program.
 KTBI—Chimes and Scripture Readings to 12:15.
 KGW—Records.
 KFWD—Radio Varieties.

1:00 P. M. to 2:00 P. M.

KTAB—Chapel of the Chimes—Organ Recital.
 KDYL—Columbia Broadcasting System.
 KEJK—Selected Recordings.
 KFOX—Records.
 KFQZ—Records.
 KFVD—G. Allison's Radio Home Program.
 KGER—Exchange Club, Hotel Virginia; 1:30 Dick Dixon at organ.
 KGFJ—Recordings; 1:30 U. S. Marines.
 KHJ—Leigh Harline, organ recital; 1:30 Charlie Wellman.
 KMIC—Records.
 KMTR—Modern Bits of Music.
 KNX—1:30 Bookroom.
 KTBI—Musical Program; 1:15 Faculty Music Hour.
 KTM—Bertie Koher, organist.
 KGW—U. S. Market Reports to 1:15
 KTAB—Recordings.

2:00 P. M. to 3:00 P. M.

KDYL—Columbia Broadcasting System; 2:30 Afternoon Jazz Skit.
 KFI—Triolian Trio and Winnie Moore; 2:45 "Phenomena."
 KFOX—Health Talk; 2:15 Records (Sacred recordings.)
 KFQZ—Popular Recordings.
 KFVD—Bess Kilmer's Helpful Hints to Housewives.
 KGER—Hawaiian Music; 2:30 Classics.
 KGFJ—Studio Program.
 KHJ—Fada Radio Program.
 KMIC—Variety Program.
 KMTR—Timely Topics; 2:15 Spanish Program by Senorita Lujan.
 KNX—L. A. Evening Express program; Records and Announcements.
 KTBI—Visiting Pastor to 2:30.
 KTM—Lola, the Angel of the Air.
 KTAB—Arthur Shaw, KTAB Organist.
 KFWD—Art Pabst and his Banjo in old time numbers.

3:00 P. M. to 4:00 P. M.

KDYL—Varieties; 3:30 Popular Period of Requests.



KFI—3:50 Better America Federation.
 KFOX—Organ Recital; 3:30 Recordings.
 KFQZ—Selections.
 KFVD—Auburn Concert Orchestra.
 KGER—Classics; 3:30 Novelties; 3:45 "Child Psychology"—Gladys Heymon.
 KGFI—Studio Program.
 KHJ—Colonial Dames Corp. Program; 3:15 Western Air Express; 3:30 Matthew Murray, "Home Problems"; 3:45 Spanish Lesson.
 KMIC—Variety Program.
 KMTR—Little Symphonies.
 KNN—3:30 Howard Clark's Blue Monday Frolic.
 KTM—Records.
 KTAJ—Matinee Melodists, directed by Walter J. Rudolph.

4:00 P. M. to 5:00 P. M.

KOL—4:45 News Items & Weather Reports.
 KDYL—Matinee Dance Hour.
 KJJK—University of California—Lecture Courses.
 KFI—4:30 Big Brother.
 KFOX—News Reports; 4:30 Varsity Boys.
 KFQZ—Records.
 KFVD—El Dorado Program.
 KGER—"Nature Study Period"; 4:15 Novelties; 4:30 Triolian Trio.
 KGFI—Studio Program.
 KHJ—"Chasin' the Blues" program.
 KMIC—Variety Program; 4:30 Request Records.
 KMTR—The Damsant.
 KNN—Lost and Found Dept and Stock Reports; 4:30 C. P. R.'s Musical Program.
 KTM—Records.
 KGW—Organ Recital.
 KTAJ—The Home Towners.
 KFWB—Radio Varieties Programs.

5:00 P. M. to 6:00 P. M.

KDYL—Uncle Ben and the Kangaroo Club; 5:30 The Day's Popular Tunes.
 KOI—Service Programs.
 KFI—Studio Program; 5:45 Stock Market Reports.
 KFOX—Organ Recital from Merithews; 5:30 So. Hawaiian Trio.
 KFQZ—Merchants Evening Review.
 KFSD—Nightly Musical Review.
 KFVD—Timely Topics.
 KGER—Wurlitzer Organ.
 KGFI—Market Reports, Organ Recital; 5:30 Variety Program.
 KHJ—Story Man; 5:30 Don Lee Dance Band.
 KMIC—Request Records; 5:30 Hawaiians Harmony.
 KMTR—Morgan & Fields program of records; 5:15 Sunset Hour; 5:45 Herald Skit.
 KNN—Travelogue; 5:15 "Own Your Own Home" by Chet Mittendorf; 5:45 Town Crier's Amusement Tips.
 KGW—Studio Program.
 KTAJ—Brother Bob's Frolic Hour.

6:00 P. M. to 7:00 P. M.

KTAJ—Dr. Wetstone.
 KOL—Session Chimes; 6:30 Ranch Dance

Band.

KDYL—Dinner Hour Varieties.
 KFI—(NBC) Edison Records; 6:30 (NBC) General Motors Family Party.
 KFOX—Lost and Found Dept., 6:05 Studio Orchestra; 6:30 Kail Hawaiian Trio.
 KFSD—News Items; 6:15 KFSD Concert Trio.
 KGER—News Bulletins; 6:15 Shell Concert Trio; 6:45 Sportlogue.
 KGFI—Harmony Hawaiian Trio.
 KHJ—Don Lee Orchestra & Singers; 6:45 World Wide News.
 KMIC—Hawaiian Harmony; 6:30 Studio Orchestra.
 KMTR—The Miniature String Players.
 KNN—Organ Program.
 KGW—Thomas A. Edison Industries (NBC) 6:30 General Motors Family Party (NBC).

KTAJ—Twilight Hour.
 KFWB—KPSN.
 KFWB—Late Recordings.
 KFWB—Harry Jackson and his Pig'n Whistle Entertainers by remote control from Hollywood Pig'n Whistle.

7:00 P. M. to 8:00 P. M.

KOI—Donald Riste, brtnr.; Margaret Grey, pianist.
 Opera Concert.
 KDYL—Feature Artists; 7:30 CBS Grand
 KFI—(NBC) General Motors Family Party; 7:30 (NBC) Empire Builders.
 KFOX—Suvdam's Buttercream School, The Comic Strip of the Air.
 KFSD—Thearle Music Co. program.
 KGER—Diamond Hawaiian Trio; 7:30 Herbert Nixon at Wurlitzer Organ.
 KGFI—Nat Winecoff, ballads; Albert Keglovich, violinist; Blanche Cooper, pianist.
 KHJ—Chas. Sheperd's Symphony; 7:30 Silverwood's Program.
 KMIC—Studio Orchestra; 7:30 Country Jane
 KMTR—Chamber of Commerce Talk; 7:15 Symphony Orchestra and Quartette.
 KNN—Time Signals; KNN Feature Artists; 7:30 Playlet through courtesy of Overell Furniture Co.
 KTB—Dr. W. P. White; 7:30 Dr. Jamieson
 KGW—(NBC) General Motors Family Party 7:30 (NBC) Empire Builders.
 KTAJ—Don's Half Hour.
 KFWB—Julius K. Johnston at the console of the Wurlitzer Vitaphone Recording Organ by remote control from Warner Bros. Motion Picture Studios, Hollywood.
 KFWB—Jean Leonard, "Wizard of the Ivories."
 KFWB—Sports talk by R. W. Shirey, courtesy of the Hancock Oil Co.

8:00 P. M. to 9:00 P. M.

KFWB—Time Signal, courtesy Bulova Watch Company.
 KOI—Studio Program.
 KDYL—CBS Grand Opera Concert; 8:30 CBS Night Club Romance.
 KFI—(NBC) Shell Program.
 KFOX—Motors Fires Quartette.



KFSD—Studio Program; 8:30 Lena Frazer, Soprano.

KFVD—8:30 Happy-Go-Lucky Trio.

KGER—P. C. C. program.

KGBF—Studio Players; 8:30 Pastel Concert Trio.

KHJ—Monday Nite Jamboree (from KFRC)
KMIC—Country Jane; 8:30 City of Inglewood Program.

KMTR—Rio Grande Jazz Band, Baritone Soloist.

KNX—Luboviski Trio. Calmon Luboviski, violinist; Claire Mellonino, pianist; Walter V. Ferner, cellist.

KTBH—Dr. B. F. Fellman and Choir.

KTM—Musical Flyers' Dance Band; Loyce Whitman, blues; 8:30 El Camino Quintette.

KGW—Rudy Sieger's Syphomists (NBC).

KTAB—Arthur Shaw, organist and Carl Tobin, Tenor balladist.

KFWB—First National Hour, by courtesy First National Studios; Leo Forbstein and his Vitaphone Recording orchestra; First National stars and players in person under direction Helen of Hollywood.

9:00 P. M. to 10:00 P. M.

KOL—"A Little Sunshine," Ken Stuart.

KDYL—CBS Hotel Paramount Orchestra
KEJK—University of California—Lecture Courses.

9:30 CBS Abe Lyman's Californians.

KFI—(NBC) Firestone Tire & Rubber Co.

KFOX—El Patio Ballroom.

KFQZ—KFQZ String Trio.

KFSD—Ratliff's Academy of Dancing.

KFVD—Gilmore Side Show.

KGER—Herbert Nixon at Wurlitzer Organ; 9:30 Nelson's Original Half-hour.

KGFJ—Postal Concert Trio.

KHJ—Monday Nite Jamboree (KFRC).

KMIC—City of Inglewood Program; 9:30 Moscow Inn.

KMTR—Rhythm Kings; 9:30 Driscoll Prize-fight.

KNX—Feature Program; 9:30 Bremer-Tully Mfg. Co. "So-A-Tone."

KTBI—Dr. David L. Cooper.

KTM—Ocean Park Business Men's Asso. Program; 9:15 Sterns Duo; 9:30 Loyce Whitman, blues, Polly Grant Hall, pianist.

KGW—Longines Time Signals; (NBC) Firestone Program; 9:30 Bremer-Tully Program.

KTAB—Travelogue and the Pickwick Symphonette directed by Walter J. Rudolph.

KFWB—Hollywood String Quintet.

KFWB—Don Warner's Dance Orchestra.

10:00 P. M. to 11:00 P. M.

KFWB—George Olsen and his Music by remote control from the Roosevelt Hotel, Hollywood.

KOL—Sessions Chimes; Studio Program.

KDYL—World Book Man, "Something About Everything"; 10:05 Variety Program of Favorite Tunes.

KEJK—KEJK Orchestra and Nora Schiller,

KFI—Packard Concert Orchestra, Pryol Moore, director.

KFOX—El Patio Ballroom.

KFQZ—The Two Harmony Boys, Ben and Jo.

KFVD—Hal Roach Comedy Gossip.

KGER—Hungarian Gypsy Orchestra, Penny Selby, tenor, Bertha Brewster, contralto.

KGFJ—Curtis Mosby's Dixieland Blue Blowers.

KHJ—Anson Weeks' Mark Hopkins Hotel Orchestra (from KFRC).

KMIC—Moscow Inn; 10:30 Hollywood Roof.

KMTR—Paul Perrot's Laughner-Harris Orchestra.

KNX—Ted Lewis and Cocoanut Grove Orchestra.

KTM—Concert Ensemble; Lenore Killian, contralto, Will Maggnetti, baritone.

KGW—Ben Selling's Boys and Collegiates.

KTAB—The Pickwickians Dance Orchestra

KFWB—Proff Moore and His Montmartre Cafe orchestra from remote control.

11:00 P. M. to 12:00 P. M.

KFWB—George Olsen and his Music by remote control from the Roosevelt Hotel.

KDYL—Harmony in Dance and Song; 12:00 Signing off and Time Report.

KEJK—Orchestra and Soloists, Blues program.

KFI—KFI News Bureau.

KFOX—Majestic Ballroom; 11:30 Silver Spray Orchestra.

KFQZ—Rose Horwitz, Iukelete Stan, Al Cajan.

KFVD—Sebastian's Cotton Club Orchestra.

KGER—Monday Nite Novelty Hour.

KGFJ—Majestic Ballroom.

KHJ—Earl Burnett's Biltmore Dance Orchestra.

KMIC—Hollywood Roof.

KMTR—Adventures of Cholly Lung.

KNX—Ted Lewis and his Cocoanut Grove Orchestra.

KTM—Coffee Dan's Frolic; Bertie Kaber, organist, Jack Ross, tenor.

KTAB—The Night Owls conducted by Willard Kimball.

KGW—Estate Weather Man; Organ Recital

TUESDAY, OCTOBER 15

7:00 A. M. to 8:00 A. M.

KOL—Eye Opener Program.

KDYL—"Good Morning" and The Alarm Clock.

KFI—S & W Morning Exercises.

KFOX—"Hello Everybody"; 7:30 News Items.

KFQZ—J. V. Baldwin Motor Co. program.

KFVD—Hal Roach Happy-Go-Lucky Trio.

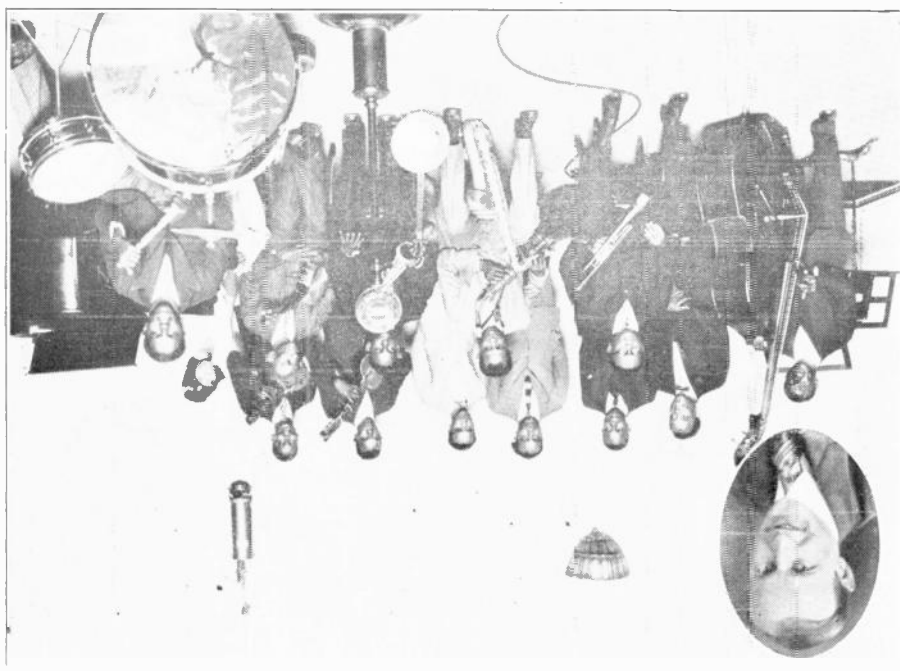
KGER—"Up With the Sun" program; 7:30 Long Beach Breakfast Club.

KGFJ—Breakfast Program.

KHJ—Physical Culture Period; 7:30 Stock Exchange reports; 7:40 Don Lee Program.

KMTR—New Idea Man's Wholesome Food

Bert Butterworth
and his Royal Order of Optimistic Doughnuts
KNX, Every Friday Night
Radio's Oldest Continuous Program
Now Playing its Fifth Year in Radio





Bertha Finch

NBC Soprano and Member of National Players



Rudy Vallee

RADIO PICTURE, "VAGABOND LOVER"



Lila Johnson

Concert Pianist—KGB San Diego



Breakfast Club.

KNX—7:15 "Pep & Vigor" Exercises; 7:30 "Home-Folks" exercises.
GTM—Dude Ranch program.
KGW—7:45 Devotional Services.
KTAB—Eye Openers with Rastus and Sambo.

8:00 A. M. to 9 A. M.

KOI—Program of General Interest.
KDYL—Breakfast Program of Waltz Tunes 8:25 Weather Report; 8:30 "Top O' the Morning Program."
KFI—Shell Happy Time From KPO.
KFOX—Records; 8:30 Hirshfeld's High Steppers.
KFQZ—Popular Recordings.
KFSD—8:30 Spanish Lesson; 8:45 Good Cheer Program.
KFVD—Hal Roach Happy-Go-Lucky Trio.
KGFJ—Breakfast Program; 8:30 Goldan Smith's Shopping Guide, Request Program.
KHJ—Early Birds.
KMIC—Rae and her Pals; The Commanders.
KMTR—New Idea Man's Breakfast Club; 8:57 Time Signals.
KNX—Record Program; 8:15 Inspirational Talk; 8:30 Time Signals.
KTBI—Uncle Harry's Bible Story; 8:15 Devotional Service; 8:45 Announcer's Hour.
KTM—Bert's Request Program.
KGW—Meeting of the Portland Breakfast Club.
KTAB—Popular Recordings.
KFWB—Radio Varieties.

9:00 A. M. to 10:00 A. M.

KTAB—Services from the Tenth Avenue Baptist Church.
KOL—9:45 Talk by Dr. Arthur of Seattle Candoris Guild.
KDYL—News of the World; 9:15 Housewives' Program; 9:45 Mrs. Tenny, Home Economics Expert.
KEJK—Adele Millar—Beauty Hints.
KFI—9:30 Bess Kilmer's Hints to Housewives; 9:45 (NBC) Washburn-Crosby.
KFOX—Organ Recital; 9:30 Hawaiian Program; 9:50 Novelty Songs.
KFQZ—Selections.
KFSD—Morning Musical Review.
KFVD—Dan Maxwell, Scotch Comedian.
KGER—Popular Music 9:30 Devotional Period; 9:45 Beauty Talk.
KGFJ—Gordon Smith's Shopping Guide; 9:30 Rango the Mystery Man.
KHJ—Breakfast Nook Philosophy; 9:30 (CBS) Julie Wintz.
KMIC—Rae and her Pals; The Commanders
KMTR—Mildred Kitchen; 9:15 Tuneful Tunes.
KNX—Georgia O. George program; 9:30 Radio Shopping News.
KTBI—Announcer's hour; 9:15 Radio Bible Course; 9:45 Rev. H. C. Kellogg.
KTM—Bert's Request Program.
KGW—News; 9:10 Oregonian Cooking School; 9:30 Town Crier; 9:45 (NBC) Washburn-Crosby Program.

KTAB—Dr. Douglas Thompson, Oakland Diet and Health Specialist.

10:00 A. M. to 11:00 A. M.

KTAB—Recordings.
KOL—Sessions Chimes; Studio Program.
KDYL—Household Hints; 10:30 Ballad Time
KFI—Sylvia's Happy Hour; 10:39 (N.C.) Women's Magazine of the Air.
KFOX—Organ Recital from Merithew's.
KFQZ—Recordings.
KFSD—Amy Lou Shopping Hour.
KGER—Popular Vocal Music; 10:15 Cline Chittick, harmonica; 10:30 Enna Jettick Twins; 10:45 Beauty Talk.
KGFJ—Organ Recital from KFOX
KHJ—Agnes White, "At Our House."
KMTR—Rhythmic Offerings.
KNX—Town Crier of the day; 10:30 Kate Brew Vaughn.
KTBI—Rev. H. W. Kellogg; 10:30 Dr. John C. Page.
KGW—Glidden; 10:15 Fels Naptha; 10:30 (NBC) Women's Magazine of the Air.
KTAB—Dr. B. L. Corley.

11:00 A. M. to 12:00 A. M.

KDYL—Midday Organ Recital; 11:30 Songs Flashes; 11:55 Synopsis of Evening Programs; 11:58 Weather Report.
KFI—(NBC) Women's Magazine of the Air; 11:30 (NBC) Duo Program.
KFOX—Beauty Talk; 11:10 Studio Orchestra; 11:30 News Reports; 11:50 Studio Orchestra.
KFQZ—Popular Recordings.
KFSD—Lloyd Peck's Service Hour.
KFVD—Marian Gay, Radio Smile Girl.
KGER—Rhythm Makers, P. C. C.
KGFJ—Recordings.
KHJ—Elvia Allman, Short Stories; 11:30 Univ. of So. Calif. "Trojan period."
KMTR—Adele Millar, Beauty Talk; 11:10 Musical Treasure Chest.
KNX—Marnola "SO-A-TONE" Program; 11:15 Talk on "Better Speech"; 11:45 Firemen's Orchestra.
KTBI—Dr. John C. Page; 11:30 Dr. We E. Edmonds.
KGW—(NBC) Women's Magazine of the Air; 11:30 Duo program to 11:45.
KTAB—Barney Lewis' Tabloid of the Air.
KFWB—Dale Iimes' Melody Trio.

12:00 A. M. to 1:00 P. M.

KOL—Organ Recital; 12:30 Kiwanis Club Luncheon.
KDYL—Columbia Broadcasting System.
KFI—Agricultural Talks & Market Reports.
KFOX—Hollywood Girls Novelty Trio.
KFQZ—Al Cajal and Soloists.
KFSD—Lloyd Peck's Service Hour to 12:30.
KFVD—Tom Brenamon, Recommendation Man; 12:30 Tom and Wash; 12:45 Dr. Dorosh Diet Question Box.
KGFJ—Recordings.
KHJ—Biltmore Hotel Concert Orchestra; 12:30 World Wide News; 12:45 Leigh Harline's organ recital.
KMIC—Records.
KMTR—World News; 12:15 Modern Bits of



Music.

KNX—Time Signals; Firemen's Orchestra to 12:30.
KTBI—Chimes and Scripture Reading to 12.15.
KTAB—Sterling Cosmopolitans.
KFWB—KPSN.

1:00 P. M. to 2:00 P. M.

KFWB—Radio Varieties.
KTAB—Chapel of the Chimes.
KDYI—Columbia Broadcasting Orchestra.
KFOX—Kiwanis Club Luncheon; 1:30 Originality Girls.
KFVD—G. Allison's Radio Home Program.
KGER—Hawaiian Music; 1:30 Dick Dixon at organ.
KGFJ—Recordings; 1:30 U. S. Marines.
KHJ—Leigh Harline's organ recital; 1:30 Charlie Wellman.
KMIC—Records.
KMTR—Modern Bits of Music.
KNX—1:30 Bookworm.
KTBI—Jack Wells, Baritone; 1:15 Bible Question Box.
KTM—Bertie Kober, organist.
KGW—U. S. Market Reports; 1:15 Musical Entertainment.
KTAB—Fanchon's Style Chat.

2:00 P. M. to 3:00 P. M.

KOI—2:45 Studio Program.
KDYI—Columbia Broadcasting System; 2:30 Afternoon Jazz Skit.
KFI—Triolian Trio and Winnie Fields Moore; 2:30 "Phenomena."
KFOX—Health Talk; 2:15 Records; 2:30 Long Beach Band.
KFQZ—Popular Recordings.
KFSD—2:30 Organ Concert from Balboa Park.
KFVD—Madame Lauro's Spanish Program.
KGER—Cortland Gilmore Sax. Conservty.; 2:30 Long Beach Municipal Band.
KGFJ—Studio Program.
KHJ—Fada Radio Program.
KMIC—Variety Program.
KMTR—Timely Topics; 2:15 Spanish Program by Senorita Lujan.
KNX—L. A. Evening Express, records and announcements at 2:30.
KTBI—Visiting Pastor to 2:30.
KTM—Lola, the Angel of the Air; 2:30 Santa Monica Band Concert.
KGW—Nik's The Wanderers.
KTAB—Arthur Shaw, organist and Mabel Payne, soprano.

3:00 P. M. to 4:00 P. M.

KFWB—Radio Varieties.
KDYI—Varieties; 3:30 Popular Period of Requests.
KFI—3:30 Wedgewood Nawell; 3:45 Leonard Van Berg.
KFOX—Organ Recital from Merithew's; 3:30 Long Beach Band.
KFQZ—Selections.
KFSD—Organ Concert from Balboa Park until 3:30.
KFVD—Auburn Concert Orchestra.

KGFJ—Organ; 3:30 Long Beach Municipal Band.
KHJ—Safety Conference; 3:15 Automobile Club of So. Calif.; 3:30 Midnight Mission; 3:45 Dr. Frank McCoy, health talk.
KMTR—Little Symphonies.
KNX—French Lessons; 3:30 Joyce Coad, Million Dollar Contest Winner.
KTM—Santa Monica Band Concert; 3:20 Records.
KGW—Musical Masters Works.
KTAB—Matinee Melodists under the direction of Walter J. Rudolph.

4:00 P. M. to 5:00 P. M.

KOI—4:45 News Items and Weather Reports.
KDYI—Matinee Dance Hour.
KFI—Artist Series, Classic program.
KFI—Dr. Miller "Human Nature Around the World," 4:30 Big Brother.
KFOX—News Reports; 4:20 Haymakers Old Time Dance Music.
KFQZ—Records.
KFVD—Eldorado Program.
KGER—Ballads; 4:30 Popular Music.
KGFJ—Studio Program.
KHJ—Matinee Melody Masters; 4:30 The Story Man.
KMIC—Variety Program; 4:30 Request Records.
KMTR—The Dansant.
KNX—Lost and Found Dept and Stock Reports; 4:30 C. P. R. Musical Program.
KTM—4:45 Tap Dancing Lesson.
KGW—Musical Masters Works.
KTAB—Home Towners.

5:00 P. M. to 6:00 P. M.

KOI—Dinner Hour Concert.
KDYI—Uncle Ben and the Kangaroo Club; 5:30 The Day's Popular Tunes.
KFI—5:15 Stock Market Reports.
KFOX—Organ Recital from Merithew's; 5:30 Hollywood Girls Trio.
KFSD—Nightly Musical Review.
KFQZ—Merchants Evening Review.
KFVD—Timely Topics.
KGER—Wurlitzer Organ.
KGFJ—Market Reports and Organ Recital; 5:30 Hollywood Girls.
KHJ—CBS Voice of Columbia.
KMIC—Request Records; 5:30 Hawaiian Harmony.
KMTR—Sunset Hour; 5:45 Herald Skit.
KNX—Travelogue; 5:15 "Own Your Home" by Chet Mittendorf; 5:45 Town Crier's Amusement Tips.
KGW—Organ Recital.
KTAB—Brother Bob's Frolic.

6:00 P. M. to 7:00 P. M.

KFWB—KPSN.
KFWB—Late Recordings.
KOL—Sessions Chimes.
KDYI—CBS United Symphony Orchestra with George Rymer, soloist; 6:30 Varieties.
KFI—Edwin August, dramatic of the Air; 6:15 Masby's Blue Blowers.

SCHEDULE OF FOOTBALL GAMES 1929 SEASON

TEAM	October 12	October 19	October 26	November 2	November 9	November 11	November 16	November 23	November 28
CALIFORNIA	Wash State at Berkeley	Pennsylvania at Philadelphia	Olympic at Berkeley	U. S. C. at Los Angeles	Montana at Berkeley		Washington at Berkeley	Stanford at Palo Alto	
CAL. AGGIES	San Jose at San Jose	Pacific at Stockton	Nevada at Reno	Loyola Nov. 1 at Sacramento		Fresno at Sacramento			Chico at Chico
CAL. TECH.	Arizona at Tuscon	U. C. L. A. at Pasadena	Whittier at Pasadena	Stanford at Palo Alto	Redlands at Pasadena		Occidental at Pasadena		San Diego at San Diego
OCCIDENTAL	Univ. of Mexico at Pasadena (Night)	U. S. C. at Los Angeles		San Diego at San Diego		Whittier at Whittier	Cal. Tech. at Pasadena	Pomona at Pomona	
OLYMPIC CLUB	Fresno at Fresno	Santa Clara at San Francisco	California at Berkeley	St. Mary's (Nov. 2) at San Francisco	St. Ignatius at San Francisco		Army (Nov. 17) at San Francisco		Seattle A. C. at Seattle
OREGON	Williamette at Eugene	Idaho at Portland	Washington at Seattle	U. C. L. A. at Eugene			O. S. C. at Eugene	Hawaii at Portland	St. Mary's at San Francisco
ORE. STATE	Columbia at Corvallis	Stanford at Palo Alto	Idaho at Corvallis	Wash. State at Portland			Oregon at Eugene	Detroit at Detroit	
POMONA		Whittier at Pomona	U. C. L. A. at Los Angeles	La Verne at Pomona	Arizona at Phoenix		San Diego at San Diego	Occidental at Pomona	
REDLANDS	San Diego at Redlands	Flagstaff Norm. at Flagstaff	La Verne at Redlands		Cal. Tech. at Pasadena			Whittier at Redlands	
ST. IGNATIUS	Santa Clara (Oct. 13) at San Francisco	California at Berkeley	St. Mary's (Oct. 27) at San Francisco	Gonzaga at Spokane	Olympic at San Francisco		Nevada at Reno	Loyola (Nov. 22) at Los Angeles	
ST. MARY'S		Gonzaga (Oct. 20) at San Francisco	St. Ignatius (Oct. 27) at San Francisco	Olympic (Nov. 3) at San Francisco	Santa Clara Nov. 10 at San Francisco		U. C. L. A. at Los Angeles	Nevada (Nov. 22) at San Francisco	Oregon at San Francisco
SAN DIEGO	Redlands at Redlands	Santa Barbara at San Diego	Submarines at San Diego	Occidental at San Diego	La Verne at Los Angeles		Pomona at San Diego		Cal. Tech. at San Diego
SANTA CLARA	St. Ignatius (Oct. 13) at San Francisco	Olympic at San Francisco		Army at San Francisco	St. Mary's (Nov. 10) at San Francisco		Stanford at Palo Alto		Loyola at Los Angeles
STANFORD	U. C. L. A. at Los Angeles	Oregon State at Palo Alto	U. S. C. at Palo Alto	Cal. Tech. at Palo Alto	Washington at Seattle		Santa Clara at Palo Alto	California at Palo Alto	
U. C. L. A.	Stanford at Los Angeles	Cal. Tech. at Pasadena	Pomona at Los Angeles	Oregon at Eugene			St. Mary's at Los Angeles		Montana at Los Angeles
U. S. C.	Washington at Seattle	Occidental at Los Angeles	Stanford at Palo Alto	California at Los Angeles	Nevada at Los Angeles		Notre Dame at Chicago	Idaho at Los Angeles	Wash. State (Nov. 30) at Los Angeles
WASHINGTON	U. S. C. at Seattle	Wash. State at Pullman	Oregon at Seattle	C. Puget Sound at Tacoma	Stanford at Seattle		California at Berkeley	Chicago at Chicago	
WASH. STATE	California at Berkeley	Washington at Pullman	Whitman at Pullman	Oregon State at Portland	Idaho at Pullman		Montana at Missoula	Gonzaga at Spokane	U. S. C. (Nov. 30) at Los Angeles
WHITTIER		Pomona at Pomona	Cal. Tech. at Pasadena			Occidental at Whittier	La Verne at Whittier	Redlands at Redlands	Arizona at Tuscon

POST SEASON GAMES

Washington State College vs Honolulu A. C. at Honolulu, December 25
 Washington State College vs University of Hawaii, at Honolulu, January 1, 1930
 University of Southern California vs Carnegie Tech, at Los Angeles, December 14
 St. Ignatius College vs Columbia at San Francisco, December 1

University of Oregon vs University of Florida at Miami, December 7
 Stanford University vs U. S. Military Academy at Palo Alto, December 28
 Army vs Navy at Berkeley, November 11
 Shrine East-West Game, Kezar Stadium, San Francisco, January 1, 1930
 Pasadena January 1, 1930—East West Teams to be selected
 Santa Clara Vs. Hawaii at Honolulu, December 14



KTM—Musical Flyers Dance Band & Soloists; 10:30 Hale Hooper, ballads and Polly Grant Hall, pianist.
 KGW—Gold Shield Concert, KOMO
 KTAB—The Pickwick Symphonette, conducted by Walter J. Rudolph.
 KFWB—Proff Moore and his Montmartre Cafe Orchestra by remote control from the Montmartre Cafe.

11:00 P. M. to 12:00 P. M.

KDYI—The Old and New in Popular Dance Music; 12:00 Signing off and Time Report.
 KFI—KFI News Bureau.
 KFOX—Majestic Ballroom; 11:30 Silver Spray Ballroom Orchestra.
 KFQZ—Anna Martin, Marjorie Foster, Al Cajal.
 KFSD—Hotel Del Coronado Orchestra.
 KFVD—Sebastian's Cotton Club Orchestra.
 KGER—Herbert Nixon at Wurlitzer Organ.
 KGFJ—Majestic Ballroom.
 KHJ—Earl Burnett's Biltmore Dance Or.
 KMIC—Hollywood Roof.
 KMTR—Adventures of Cholly Lung.
 KNX—Ted Lewis and his Coconut Grove Orchestra.
 KTM—Coffee Dan's Frolic; Bertie Kober organist; Hale Hooper, ballads.
 KGW—Estate Weather Man; Dance Band.
 KTAB—The Night Owls conducted by Don Jeffry.

WEDNESDAY, OCTOBER 16

7:00 A. M. to 8:00 A. M.

KOL—"Eye Opener" program; 7:35 Breakfast Club.
 KEJK—Frank Roefers's Exercises.
 KFOX—"Hello, Everybody"; 7:30 News Items.
 KFQZ—J. V. Baldwin Motor Co. program.
 KFVD—Hal Roach Happy-Go-Lucky Trio.
 KGFJ—Breakfast Program.
 KHJ—Physical Culture Program; 7:30 Stock Exchange Reports; 7:40 Don Lee program.
 KMTR—New Idea Man's Wholesome Food Breakfast Club.
 KNX—7:15 "Pep & Vigor" Exercises; 7:45 "Home Folks" Exercises.
 KTM—Dude Ranch Program.
 KTAB—Rastus and Sambo "The Eye Openers."
 KGW—7:45 Devotional Services.

8:00 A. M. to 9 A. M.

KOL—Breakfast Club; 8:30 Program of general interest.
 KEJK—Pot O' Gold.
 KFI—Shell Happy Time from KPO.
 KFOX—Records; 8:30 Hirshfield's High Steppers.
 KFQZ—Popular Recordings.
 KFSD—8:45 Good Cheer Program.
 KFVD—Hal Roach Happy-Go-Lucky Trio.
 KFWB—The Breakfast Club.
 KGER—"Up with the Sun" program.
 KGFJ—Breakfast Program; 8:30 Gordon

Smith's Shopping Guide.
 KHJ—Alarm Clock.
 KMIC—Rae and her Pals; The Commanders.
 KMTR—New Idea Man's Breakfast Club; 8:57 Time Signals.
 KNX—Records; 8:15 Inspirational Talk; 8:55 Time Signals.
 KTBI—Uncle Harry's Bible Story; 8:15 Devotional Services; 8:45 Announcer's Hour.
 KTM—Bert's Request Program.
 KTAB—Recordings.
 KGW—Shell Happy Time (NBC).

9:00 A. M. to 10:00 A. M.

KOL—Program of general interest; 9:45 Talk by Dr. H. Arthur.
 KEJK—New Recordings; 9:15 Health Talk; 9:55 Chapel Services.
 KFI—Bess Kilmer's Hints to Housewives; 9:15 (NBC) Women's Magazine of the Air.
 KFOX—Hirshfield's High Steppers; 9:20 9:30 Organ Recital; 9:30 Hawaiian and Novelty program.
 KFQZ—Selections.
 KFSD—Morning Musical Review.
 KFVD—Travelogue.
 KFWB—The Breakfast Club.
 KGER—Vocal Music; 9:30 Devotional Period; 9:45 Joseph Bjoindahl, baritone and Dick Dixon, organist.
 KGFJ—Gordon Smith's Shopping Guide; 9:30 Rango the Mystery Man.
 KHJ—(CBS) Columbia Noon Day Club; 9:30 (NBC) Julie Wintz.
 KMIC—Rae and Her Pals; The Commanders.
 KMTR—Mildred Kitchen, Home Economics 9:15 Tuneful Tunes.
 KNX—Georgia O. George; 9:30 Radio Shopping News.
 KTBI—Announcer's Hour; 9:15 Radio Bible Course; 9:45 Messages from the Fest Books.
 KTM—Bert's Request Program
 KTAB—Morning Prayer Service; 9:30 Recordings.
 KGW—News; 9:10 Oregonian Cooking School; 9:30 Town Crier.

10:00 A. M. to 11:00 A. M.

KOL—Sessions Chimes; Studio program
 KEJK—10:15 Jack Keefer, the Ad-Visor.
 KFI—(NBC) Women's Magazine of the Air; 10:15 (NBC) Libby, McNeill & Libby.
 KFOX—Organ Recital from Merithew's.
 KFQZ—Recordings.
 KFSD—Amy Lou Shopping Hour.
 KFWB—Prudence Penny; 10:30 Radio Varieties.
 KGER—Popular Vocal Music; 10:15 Cline Chittick, harmonica; 11:30 Fenna Jet-tick Twins; 10:45 Beauty Talk.
 KGFJ—Organ Recital from KFOX.
 KHJ—Agnes White, "At Our House."
 KMTR—Rhythmic Offerings.
 KNX—Town Crier; 10:30 Kate B. Vaughn.
 KTBI—Messages from the best books; 10:35 Dr. John C. Page.
 KTAB—Recordings; 10:30 Dr. B. L. Corley



KFOX—Lost and Found Dept.; 6:05 Hollywood Girls; 6:30 Helen Smith, pianist; 6:45 Dr. Williams, health specialist.
 KFSD—News Items; 6:15 State College Program.
 KGER—News Bulletins; 6:15 Dick Love's Entertainers; 6:45 Sportalogue.
 KGFJ—Harmony Hawaiian Trio.
 KHJ—(CBS) Old Gold Program.
 KMIC—Hawaiian Harmony; 6:30 Studio Orchestra.
 KMTR—The Miniature String Players; 6:30 Rhythm Kings.
 KNX—Organ Program.
 KGW—(NBC) Eveready Hour.
 KTAB—Dr. Wetstone.
 KTAB—Twilight Hour.
 KFWB—Harry Jackson and his Pig'n Whistle Entertainers by remote control from Hollywood Pig'n Whistle Cafe.

7:00 P. M. to 8:00 P. M.

KFWB—Hollywood Athletic Club orchestra by remote control.
 KTAB—Recordings.
 KOL—"Old Uncle Henry"—Frank Coombs.
 KDYL—CBS Paul Whiteman and his Orchestra.
 KFI—(NBC) Cliquot Club Eskimos; 7:30 (NBC) Fred Orchestradians.
 KFOX—Three Bluebirds; 7:30 Buster Wilson's Orchestra.
 KFSD—KFSD Concert Trio.
 KGER—Rhythm Makers; 7:30 Long Beach Municipal Band Concert.
 KGFJ—Charlie Davis, uke; Nat Winicoff, ballad; Blanche Cooper, piano.
 KHJ—U. S. Rubber Co. Program (chain); 7:30 Pelton Motor Program.
 KMIC—Studio Orchest.; 7:30 Country Jane.
 KMTR—The Rhythm Kings; 7:30 Evolution of the Dance.
 KNX—Time Signals; Talk by Dr. Baumgardt on Popular Science; 7:30 Allis Chalmers in Recording Program.
 KGW—Cliquot Club Eskimos; 7:30 (NBC) Earl Radio Program.
 KTAB—Earle Caldwell, popular entertainer, and Estelle Moran, pianist and singer.
 KFWB—Eskimo Pie Corporation Program.

8:00 P. M. to 9:00 P. M.

KOL—Hal Chase and Investment program.
 KDYL—KDYL—Feature Artists; 8:30 CBS Story in a Song—well known songs in dramatized form.
 KFI—(NBC) RKO Hour.
 KFOX—Long Beach Band; 8:30 Cecil Fry, Popular Songs.
 KFSD—Manuel Dehesa; 8:30 Leslie Adams.
 KFVD—8:30 Happy-Go-Lucky Trio.
 KGER—Long Beach Municipal Band Concert.
 KGFJ—Studio Players; 8:30 Pastel Concert Trio.
 KHJ—Pacific States Saving & Loan Assn. Program (chain).
 KMIC—Country Jane; 8:30 Studio Orchest. (request program).
 KMTR—Evolution of the Dance; 8:30 Feature Program.

KNX—Hercules Gasoline Co. "Tom and his Mule Hercules."
 KTM—Gilmore Circus; 8:30 Concert Ensemble, Lenore Killian, contralto.
 KGW—(NBC) Radio-Keith Orpheum.
 KTAB—Arthur Shaw, organist and Earl Tobin, tenor-balladist.
 KFWB—Margit Hegedus String Ensemble.
 KFWB—Herbert Heyes Players in 30 minute playlet.

9:00 P. M. to 10:00 P. M.

KFWB—Main Bout from Olympic Auditorium.
 KOL—Ken Stuart, "A Little Sunshine"; 9:30 Margaret Gray.
 KDYL—CBS Jesse Crawford, organist in novelty program.
 KFI—(NBC) The Parker Family; 9:30 L. A. Steamship Co. Program.
 KFOX—El Patio Ballroom.
 KFQZ—KFQZ String Trio.
 KFSD—Studio Program.
 KFVD—Auburn Concert Orchestra.
 KGER—Triolian Trio; 9:30 VFW program, Herbert Whitaker.
 KGFJ—Pastel Concert Trio.
 KHJ—L. A. Young-Spring & Wire Program (KFRC); 9:30 Raybestos Program, (KFRC).
 KMIC—Studio Orchestra; 9:30 Moscow Inn.
 KMTR—Feature Program; 9:30 Happy Harry Geise, piano and songs.
 KNX—Maytag "So-A-Tone" Program; 9:30 KNX Feature Artists.
 KTM—Musical Flyer's Dance Band, Loyce Whiteman, blues; Polly Hall, pianist; 9:30 El Camino quintette, Lenore Killian, contralto.
 KGW—Longine Time Signals; (NBC) Parker Family; 9:30 Studio Program.
 KTAB—Lullaby Lane program with the Pickwick Symphonette, Joan Ray, and Jane Sand.
 KFWB—The Edgeworth Plantation Club, through courtesy of the makers of Edgeworth Tobacco.

10:00 P. M. to 11:00 P. M.

KOL—Sessions Chimes; Studio Program.
 KDYL—World Book man, "Something About Everything"; 10:05 Musical Favorites.
 KEJK—KEJK Orchestra and Hazel Lee; 10:30 Ben Light's Three Minstrels.
 KFI—(NBC) Spotlight Review.
 KFOX—El Patio Ballroom.
 KFQZ—Esther Laurette and Laura Wheeler.
 KFSD—Ratliff's Academy of Dancing.
 KFVD—Hal Roach Comedy Gossip.
 KGER—Harmony Three, Joseph Bjoindahl, baritone; 10:30 Studio Program.
 KGFJ—Curtis Mosby and his Dixieland Blue Blowers.
 KHJ—Earl Burnett's Biltmore Dance Orchestra.
 KMIC—Moscow Inn; 10:30 Hollywood Roof.
 KMTR—Paul Perrot and Laughner-Harris Orchestra.
 KNX—Ted Lewis and Coconut Grove Orchestra.



KGW—Town Crier; 10:15 Libby, McNeill & Libby (NBC); 10:30 (NBC) Women's Magazine of the Air.

11:00 A. M. to 12:00 A. M.

KEJK—11:15 Items of Interest.
KFI—World Series Ball Game.
KFOX—Beauty Talk; 11:10 Studio Orchestra; 11:30 News Reports; 11:50 Studio Orchestra.
KFQZ—Popular Recordings.
KFSD—Lloyd Peck's Service Hour.
KFVD—Bess Kilmer's Helpful Hints to Housewives.
KFWB—Radio Varieties; 11:45 Dale Imes Melody Trio.
KGER—Rhythm Makers.
KGFJ—Recordings.
KHJ—(CBS) Patterns in Prings.
KMTR—The Musical Treasure Chest.
KNX—KNX Clinic of the Air; 11:30 F. W. Fitch Co. Program; 11:45 Marmola "SO-A-Tone" Program.
KTBI—Dr. John C. Page; 11:30 Dr. J. E. Jaderquist.
KTAB—Barney Lewis Tabloid of the Air.
KGW—Women's Magazine of Air (NBC) to 11:30.

12:00 A. M. to 1:00 P. M.

KOL—Organ Recital; 12:30 Rotary Club Luncheon.
KEJK—Musical Program.
KFI—World Series Baseball Game from Chicago.
KFOX—Hollywood Girls—Novelty Trio.
KFQZ—Al Cajal and Soloists.
KFSD—Lloyd Peck's Service Hour to 12:30.
KFVD—Tom Breneman, the Recommendation; 12:30 Tom and Wash.
KFWB—Dale Imes' Melody Trio to 12:15; 12:30 Radio Varieties.
KGER—12:45 Dr. Ralph Mitchell and Associated Dentists program.
KGFJ—Recordings.
KHJ—Biltmore Hotel Concert Orchestra; 12:30 World Wide News; 12:45 Kiwanis Club Luncheon from Biltmore Hotel.
KMIC—Records.
KMTR—World News; 12:15 Modern Bits of Music.
KNX—Time Signals; 12:30 Bell Laboratories to 12:45.
KTBI—Chimes and Scripture reading to 12:15.
KTAB—Sterling Cosmopolitans.

1:00 P. M. to 2:00 P. M.

KOL—Rotary Club Luncheon; 1:30 Matinee Melodies.
KEJK—Sleepytime Suggestions; 1:30 Royal Purifier program.
KFI—World Series Baseball Game from Chicago.
KFOX—Rotary Luncheon, 1:30 Originality Girls.
KFQZ—Records.
KFVD—G. Allison's Radio Home Program.
KFWB—Radio Varieties; 1:15 Proff Moore's Montmartre Cafe Orchestra; 1:45 Radio Varieties.

KGER—Advertising Club; 1:30 Dick Dixon at Wurlitzer Organ.
KGFJ—Recordings; 1:30 U. S. Marines.
KHJ—Kiwanis Luncheon from Biltmore Hotel; 1:30 Charlie Wellman.
KMIC—Records.
KMTR—Modern Bits of Music.
KNX—1:30 Bookworm.
KTBI—Ada and Ella Kimmell; 1:30 Rev. John A. Hubbard.
KTM—Berlie Kober, organist.
KTAB—The Chapel of the Chimes; 1:30 Recordings.
KGW—U. S. Market Reports; 1:15 Organ Recital.

2:00 P. M. to 3:00 P. M.

KOL—2:45 Studio program.
KEJK—Selected Records; 2:30 Rango the Mystery Man.
KFI—Triolian Trio and Winnie Moore; 2:30 "Phenomena."
KFOX—Health Talk; 2:15 Records; 2:30 Long Beach Band.
KFQZ—Popular Recordings.
KFSD—2:30 Organ Concert from Balboa Park.
KFWB—Radio Varieties to 2:10.
KGER—Popular Music; 2:30 Long Beach Municipal Band Concert.
KGFJ—Studio program.
KHJ—Fada Radio program.
KMIC—Variety Program.
KMTR—Timely Topics; 2:15 Spanish Lesson.
KNX—L. A. Evening Express program "Records and Announcements to 2:30.
KTBI—Visiting Pastor to 2:30.
KTM—Lola, the Angel of the Air; 2:30 Santa Monica Band Concert.
KTAB—Arthur Shaw in Organ Recital.
KGW—Organ Recital; 2:15 Musical Entertainment.

3:00 P. M. to 4:00 P. M.

KOL—Studio Program.
KEJK—"Say it With Music."
KFOX—Organ Recital from Merithew's; 3:30 Long Beach Municipal Band.
KFQZ—Selections.
KFSD—Organ Concert from Balboa Park to 3:30.
KFVD—Auburn Concert Orchestra.
KGER—Long Beach Municipal Band.
KGFJ—Studio Program.
KHJ—"Gardens"—Fred C. McNabb.
KMIC—Variety Program.
KMTR—Variety Program.
KMTR—Little Symphonies.
KNX—3:30 KNX Clinic of the Air.
KTM—Santa Monica Band Concert; 3:30 Records.
KTAB—Matinee Melodists; 3:45 Leah Kimball's Book Reviews.
KGW—(NBC) Cabin Door.

4:00 P. M. to 5:00 P. M.

KOL—Studio Program; 4:45 News Items and weather Reports.
KEJK—Univ. of Southern Calif. Lecture Courses.
KFI—4:30 Big Brother.



KFOX—News Reports; 4:20 Varsity Boys.
KFQZ—Records.
KFVD—El Dorado Program.
KFWB—4:30 Radio Varieties.
KGER—Rev. Rosina Hobday, Pyschic Readings; 4:30 Triolian Trio.
KGFJ—Studio Program.
KHJ—Matinee Melody Masters; 4:30 The Story Man.
KMTR—The Dansant.
KNX—The Dansant.
KNX—Lost and Found Dept. and Stock Reports; 4:30 CPR's Musical program.
KTM—Records.
KDYL—Matinee Dance Hour.
KTAB—Home Towners.
KGW—Organ Recital.

5:00 P. M. to 6:00 P. M.

KOL—Dinner Hour Concert.
KEJK—Bob Roe and his Southern Serenaders.
KFI—5:45 Stock Market Reports.
KFOX—Organ Recital from Merithew's; 5:30 Hollywood Girls Trio.
KFQZ—Merchant's Evening Review.
KFSD—Naughty Musical Review.
KFVD—Timely Topics.
KFWB—Radio Varieties.
KGER—Wurlitzer Organ.
KGFJ—Market Reports and Oragn; 5:30 Variety Program.
KHJ—(CBS) Voice of Columbia.
KMIC—Request Records; 5:30 Harmony Hawaiians.
KMTR—Sunset Hour; 5:45 Herald News.
KNX—Travelogue; 5:15 Chet Mittendorff's program; 5:45 Town Crier.
KDYI—Uncle Ben and the Kangaroo Club; 5:30 The Day's Popular Tunes.
KTAB—Brother Bob's Frolic Hour.
KGW—Movie Talk; 5:30 Studio.

6:00 P. M. to 7:00 P. M.

KOL—Sessions Chimes.
KFI—Wm. Dun, English Comedian; 6:30 (NBC) Palmolive Hour.
KFOX—Lost and Found; 6:05 Studio Orchestra.
KFSD—News Items; 6:15 Playcasters.
KFWB—6:20 Late Recordings; 6:30 Harry Jackson's Pig'n Whistle Entertainers.
KGER—News Bulletins; 6:15 Sunset Blue Killers; 6:45 Sportalogue.
KGFJ—Harmony Hawaiian Trio.
KHJ—Don Lee Inc. organ recital; 6:45
KMIC—Harmony Hawaiians; 6:30 Piano Memory Concert.
World Wide News.
KMTR—Miniature String Players; 6:30 Rhythm Kings.
KNX—Organ Program.
KDYL—Dinner Hour Varieties.
KTAB—Dr. Wetstone; 6:30 Twilight Hour.
KGW—Studio program; 6:30 (NBC) Palmolive program.

7:00 P. M. to 8:00 P. M.

KOL—7:15 Margaret Gray, piano.
KFI—(NBC) Palmolive Hour; 7:30 (NBC) Stromberg-Carlson.
KFOX—Hollywood Girls; 7:30 Buster Wilson's Orchestra.

KFSD—Safety Program with Concert Trio; Geo. Ballantine, tenor.
KFWB—MacMarr Stores program.
KGER—"Juvenile Problems", Police Dept.; 7:30 Long Beach Municipal Band.
KGFJ—Nat Winecoff, ballads; Albert Keglovich, violinist; Blanche Cooper, pianist.
KHJ—(CBS) Kolster program; 7:30 Don KMIC—Marie Hockings at the Organ; 7:30 Country Jane and KMIC Trio.
KMTR—Rhythm Kings; 7:30 Highlights of Grand and Light Opera.
KNX—Mr. and Mrs. Radio Skit; 7:30 Brunswick Co. courtesy program.
KDYI—KDYI Feature Artists.
KGW—(NBC) Palmolive program; 7:30 (NBC) Stromberg-Carlson program.

8:00 P. M. to 9:00 P. M.

KOL—Bridge Game; 8:30 Ban Joe and Eddy.
KFI—(NBC) Associated Oil Co., 8:30 Earl C. Anthony Inc. Program.
KFOX—Hancock Golden Trails Hour.
KFSD—Studio Program.
KFVD—Happy-Go-Lucky Trio.
KFWB—MacMarr Stores Program.
KGER—Melodies of Bygone Days.
KGFJ—Studio Players; 8:30 Pastel Concert Trio.
KHJ—Movie Club.
KMIC—Country Jane and KMIC Trio; 8:30 Hollywood Roof.
KMTR—Highlights of Grand and Light Opera; 8:30 Symphony Orchestra.
KNX—Bert Butterworth and his "Airdales"; 8:30 "Navigator Hour."
KTM—El Camino Quintet; 8:30 Service Station Four.
KDYI—(CBS) Kolster Program; 8:30 (CB
KDYI—(CBS) Kolster Program; 8:30 (CBS) Dixie Echoes.
KTAB—Arthur Shaw, organist; 8:30 Pickwick Symphonette—Mae Thompson, soprano.
KGW—(NBC) Roads to Romance; 8:30 Time Signals; 8:30 Maytag Radioette.

9:00 P. M. to 10:00 P. M.

KOL—Ken Stuart "A Little Sunshine."
KEJK—Univ. of So. California Lecture Course; 9:30 Orchestra and Frank Van Cline.
KFI—Gordon Bread Co. program; Paul Roberts and Schonberger Trio.
KFOX—El Patio Ballroom.
KFQZ—KFQZ String Trio.
KFSD—Ratliff's Academy of Dancing.
KFVD—Auburn Concert Orchestra.
KFWB—Ray Martin and Concert Orchestra; Vernon Pickard, tenor; Ina Mitchell Butler, soprano.
KGER—Herbert Nixon at Wurlitzer organ; 9:30 Marion Sevier, whistler.
KGFJ—Pastel Concert Trio.
KHJ—Chanstor & Lyon Program (KFRC); 9:30 Don Lee Symphony.
KMIC—Hollywood Roof; 9:30 Moscow Inn.
KMTR—Symphony Orchestra.
KNX—"Navigator Hour"; 9:30 KNX Feature Artists.

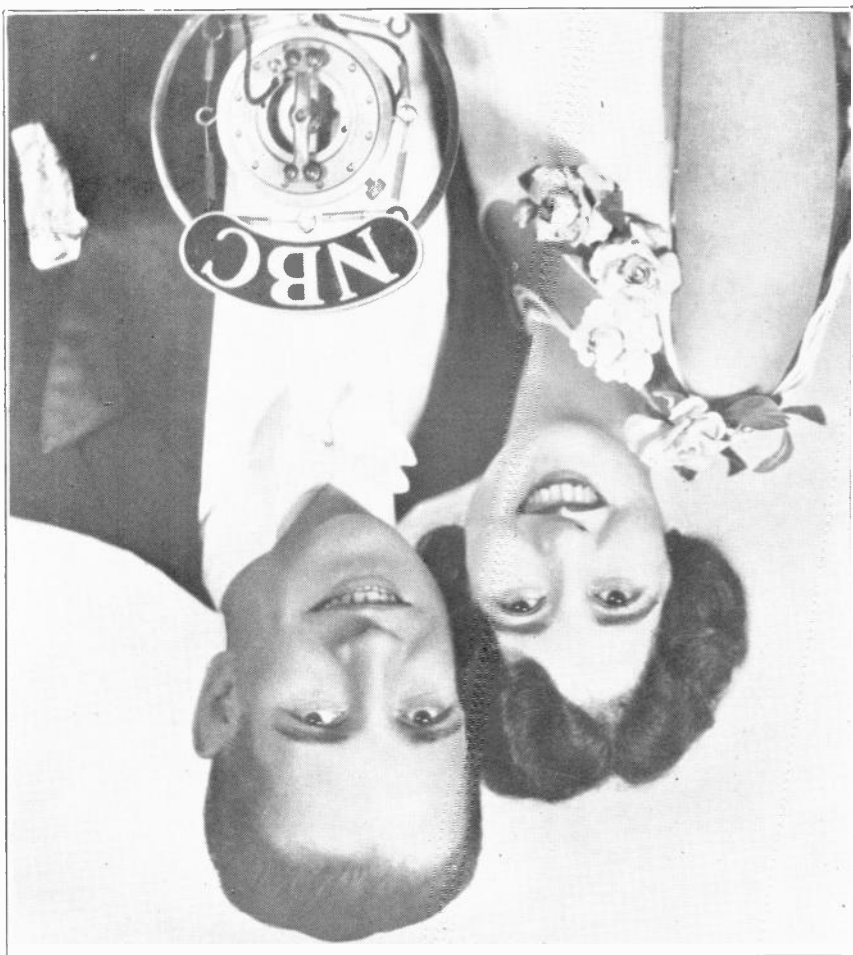


Happy-Go-Lucky Trio

and

PAUL MYERS, BARITONE

7 to 9 A. M. each week day



Jack and Ethyl

Walter P. Zandy

Associated Motor Mates

*Helen Kane*

Paramount Pictures

The original baby-talk singer who has scored such a success in New York, is in Hollywood appearing in a featured role in "Sweetie", Paramount's musical romance of campus life.



Arion Trio, NBC

Josephine Holub, Violin; Aurora Carver, Cellist;
(below) Joyce Barthelson, pianist



KTM—Bertie Kober organist; Arthur Hall, tenor; 9:30 Concert Ensemble with Lucy Day, soprano.

KDYI—Sunset Hour; 9:30 (CBS) Pancho's Orchestra.

KTAH—Pickwick Symphonette — Mae Thompson, soprano; 9:30 Melody Masters with Joan Ray, contralto.

KGW—Brunswick Hour; 9:30 Vedol Vodvil KOMO.

10:00 P. M. to 11:00 P. M.

KOL—Sessions Chimes; Studio program.

KEJK—Harwoodin Trio and Orchestra; 10:30 Ben Light and Brother Paul.

KFI—(NBC) Cotton Blossom Minstrels.

KFOX—El Patio Ballroom; 10:30 Fights from Wilmington Bowl.

KFQZ—Anna Martin, Marjorie Forster, Ukelele Stan.

KFSD—Hotel Del Coronado Orchestra.

KFVD—Hal Roach Comedy Gossip.

KFWB—Geo. Olson and Roosevelt Hotel Orchestra.

KGER—Hungarian Orchestra; Margaret Trainer, soprano and James G. McGarrigle, baritone.

KGFJ—Curtis Mosby's Dixieland Blue Blowers.

KHJ—Earl Burnett's Hotel Biltmore Dance Orchestra.

KMIC—Moscow Inn; 10:30 Larry Weldon and Hollywood Roof Orchestra.

KMTR—Paul Perrot and Laughner-Harris Orchestra.

KNX—Ted Lewis and Cocoanut Grove Orchestra.

KTM—Concert Ensemble; 10:30 Musical Flyers Dance Band, Jack Ross, tenor and Polly G. Hall.

KDYI—World Book Man; 10:05 Studio Entertainers.

KTAH—Melody Masters; 10:30 Pickwick Aviators.

KGW—Fisher Concert Orchestra from KOMO.

11:00 P. M. to 12:00 P. M.

KEJK—Request Records.

KFI—KFI News Bureau.

KFOX—Fights from Wilmington Bowl; 11:15 Silver Spray Orchestra.

KFQZ—Rose Horwitz, Al Cajal.

KFVD—Sebastian's Cotton Club Orchestra.

KFWB—Proff Moore and Mortmartre Cafe Orchestra.

KGER—Joe Lindenbaum and Cocoanut Orchestra, Breakers Hotel.

KGFJ—Majestic Ballroom.

KHJ—Earl Burnett's Hotel Biltmore Dance Orchestra.

KMIC—Hollywood Roof Orchestra.

KMTR—Adventures of Cholly Lung.

KNX—Ted Lewis and his Cocoanut Grove Orchestra.

KTM—Coffee Dan's Frolic; Bertie Kober, organist, Jack Ross, tenor.

KDYI—Dance Music.

KTAH—The Nite Owls.

KGW—Estate Weather Man; Dance Band.

KNX—9:30 Radio Shopping News.

THURSDAY, OCTOBER 17

7:00 A. M. to 8:00 A. M.

KOL—Eye Opener program.

KEJK—Frank Roeder's Exercises.

KFOX—"Hello, Everybody". News Items.

KFQZ—J. V. Baldwin Motor Co. Program.

KFVD—Hal Roach Happy-Go-Lucky Trio.

KGFJ—Breakfast Program.

KHJ—Physical Culture; 7:30 Stock Exchange Reports; 7:40 Don Lee Inc. program

KMTR—New Idea Man's Wholesome Food Breakfast Club.

KNX—7:15 "Pep & Vigor" Exercises; 7:45 "Home Folks" Exercises.

KTM—Dude Ranch Program.

KTAH—Rastus and Sambo, Eye Openers.

KGW—7:45 Devotional Services.

8:00 A. M. to 9 A. M.

KOL—Program of General Interest.

KEJK—Pot O' Gold.

KFI—Shell Happy Time from KPO.

KFOX—Records; 8:30 Hirshfield's High Steppers.

KFQZ—Popular Recordings.

KFSD—8:30 Spanish Lesson; 8:45 Good Cheer Program.

KFVD—Hal Roach Happy-Go-Lucky Trio. KGER—"Up with the Sun Program."

KGFJ—Breakfast Program; 8:30 Gordon Smith's Shopping Guide; Requests.

KHJ—Early Birds.

KMIC—Rae and her Pals; the Commanders.

KMTR—New Idea Man's Breakfast Club; 8:57 Time Signals.

KNX—Record Program; 8:15 Inspirational Talk; 8:55 Time Signals.

KTBH—Uncle Harry's Bible Story; 8:15 Devotional Service; 8:45 Announcer's Hour.

KTM—Bert's Request Program.

KTAH—Recordings.

KGW—(NBC) Shell Happy Time.

9:00 A. M. to 10:00 A. M.

KOL—Program of general interest; 9:15 Talk by Dr. H. Arthur.

Radio Dealers Financed

**ROBT. E. HOPKINS
& CO.**

417 S. Hill St. **MUTual 6282**
LOS ANGELES



KEJK—New Recordings; 955 Chapel Services.

KFI—Sadye Nathan, Beauty Talks; 9:15 Sylvia's Happy Hour; 9:45 (NBC) Washburn-Crosby.

KFOX—Hirshfield's High Steppers; 9:20 Organ Recital; 9:30 Hawaiian program.

KFQZ—Selections.

KFSD—Morning Musical Review.

KFVD—Dan Maxwell, Scotch Comedian.

KFWB—Radio Varieties.

KGER—Novelties; 9:15 Pop. Vocal Music; 9:30 Devotional Period; 9:45 Beauty Talk.

?KGFJ—Gordon Smith's Shopping Guide; 9:30 Rango the Mystery Man.

KHJ—Breakfast Nook Philosophy; 9:30 (CBS) Julie Wintz and Orchestra.

KMIC—Rae and her Pals; the Commanders. KMTR—Mildred Kitchen; 9:15 Tunesful Tunes.

KTBI—Announcer's Hour; 9:15 Radio Bible Course; 9:45 Missionary Hour.

KTM—Bert's Request Programs.

KTAB—Morning Prayer Service; 9:30 Dr. Thompson, Oakland Health Specialist.

KGW—News; 9:10 the Oregonian Cooking; 9:30 Town Crier; 9:45 Washburn-Crosby program.

10:00 A. M. to 11:00 A. M.

KOL—Sessions Chimes; Studio program.

KEJK—10:15 Jack Kiefer, the Ad-Visor.

KFI—(NBC) Women's Magazine of the Air.

KFOX—Organ Recital from Merithew's.

KFQZ—Recordings.

KFSD—Amy Lou Shopping Hour.

KFWB—Radio Varieties.

KGER—Popular Music; 10:45 Cline Chittick, harmonica; 10:30 Enna Jettick Twins; 10:15 Beauty Talk.

KGFJ—Organ Recital from KFOX.

KHJ—Agnes White "At Our House."

KMTR—Rhythmic Offerings.

KNX—Town Crier; 10:30 Kate B. Vaughn.

KTBI—Missionary Hour; 10:35 Dr. John C. Page.

KTAB—Recordings; Dr. B. L. Corley.

KGW—(NBC) Women's Magazine of the Air.

11:00 A. M. to 12:00 A. M.

KOL—Studio Program.

KEJK—11:15 Intems of Interest.

KFI—World Series Ball Game, Chicago.

KFOX—Beauty Talk; 11:10 Studio Orchestra; 11:30 News; 11:50 Studio Orchestra.

KFQZ—Popular Recordings.

KFSD—Amy Lou Shopping Hour; 11:15 Health Talk; 11:30 Lloyd Peck's Service Hour.

KFWB—Radio Varieties; 11:15 Dale Ime's Melody Trio.

KGER—Rhythm Makers.

KGFJ—Recordings.

KHJ—(CBS) Patterns in Prings.

KMTR—The Musical Treasure Chest.

KNX—Marmola "So-A-Tone" Program; 11:15 Firemen's Orchestra.

KTBI—Dr. John C. Page; 11:30 Dr. E. L. McCreery.

KTAB—Barney Lewis' Tabloid of the Air. KGW—(NBC) Standard School; 11:45 Maytag "So-A-Tone."

12:00 A. M. to 1:00 P. M.

KOL—Organ Recital; 12:30 Matinee Melodies.

KEJK—Musical Program.

KFI—World Series Ball Game, Chicago.

KFOX—Hollywood Girls, Novelty Trio.

KFQZ—Al Cajal and Soloists.

KFSD—Lloyd Peck's Service Hour to 12:30.

KFVD—Tom Breneman, Recommendation Man; 12:30 Tom and Wash.; 12:45 Dr. Dorash, Diet Question Box.

KFWB—Dale Ime's Melody Trio to 12:15 12:30 Radio Varieties.

KGFJ—Recordings.

KHJ—Biltmore Hotel Concert Orchestra; 12:30 World Wide News; 12:45 Leigh Harline in organ recital.

KMIC—Records.

KMTR—World News; Modern Bits of Music

KNX—Firemen's Orchestra to 12:30; Time Signals.

KTBI—Chimes and Scripture Reading to 12:15.

KTAB—Sterling Cosmopolitans.

KGW—Maytag "So-A-Tone"; 12:15 Barbara Gould, KGW to 12:30.

1:00 P. M. to 2:00 P. M.

KEJK—Sleepytime Suggestions; 1:30 Royal Purifier program.

KFI—World Series Ball Game, Chicago.

KFOX—"Health and Efficiency" talk; 1:15 Originality Girls.

KFQZ—Records.

KFVD—G. Allison's Radio Home Program.

KFWB—Radio Varieties.

KGER—Optimistic Shub; 1:30 Dick Dixon at organ; 1:50 Voice Clinic.

KGFJ—Recordings; 1:30 U. S. Marines.

KHJ—Leigh Harline in organ recital; 1:30 Charlie Wellman.

KMIC—Records.

KMTR—Modern Bits of Music.

KNX—1:30 Bookworm.

KTBI—Ernest Nichols, baritone; 1:15 Missionary Biography, Rev. Hunter.

KTM—Bertie Kober, organist.

KTAB—Chapel of the Chimes to 1:30.

KGW—Market Report; 1:15 Business Talk, U. S. Dept. of Commerce; 1:30 Musical Entertainment.

2:00 P. M. to 3:00 P. M.

KOL—2:45 Studio Program.

KEJK—Selected Recordings.

KFI—Triolian Trio and Winnie Moore; 2:30 "Phenomena."

KFOX—"Health Talk" Dr. Harbottle; 2:15 Records; 2:30 Long Beach Municipal Band.

KFQZ—Popular Records.

KFSD—2:30 Organ Concert from Balboa Park.

KFVD—Madame Laurio's Spanish program.

KFWB—Radio Varieties to 2:10.

KGER—Voice Clinic, David Hutton; 2:30 Long Beach Municipal Band.



KGFJ—Studio Program.
 KHJ—Fada Studio Program.
 KMIC—Variety program.
 KMTR—Timely Topics; 2:15 Spanish program by Senorita Lujan.
 KNX—L. A. Evening Express "Records and Announcements" to 2:30.
 KTBH—Visiting Pastor to 2:30.
 KTM—Lola, the Angel of the Air; 2:30 Santa Monica Band Concert.
 KGW—Musical Entertainment.

3:00 P. M. to 4:00 P. M.

KOL—Studio program.
 KEJK—Say it with Music.
 KFOX—Organ recital Merithew's; 3:30 Long Beach Municipal Band.
 KFQZ—Selections.
 KFSD—Organ Program from Balboa Park to 3:30.
 KFVD—Auburn Concert Orchestra.
 KGER—Long Beach Municipal Band Concert.
 KGFJ—Studio Program.
 KHJ—Walter Brown Murray talk on Books 3:15 Police Commission, W. G. Thorpe 3:30 H. M. Robertson talk on Dogs; 3:45 Dr. Lovell, health talk.
 KMIC—Variety Program.
 KMTR—Little Symphonies.
 KNX—3:30 French Lessons.
 KTM—Santa Monica Band Concert; 3:20 Records.
 KTAB—Matinee Melodists.
 KGW—(NBC) House of Myths.

4:00 P. M. to 5:00 P. M.

KOL—Studio program; 4:45 News Items and Weather Reports.
 KEJK—Artist Series, Classic Program.
 KFI—Big Brother.
 KFOX—News Reports; 4:30 Haymakers Old Time Dance Music.
 KFQZ—Records.
 KFVD—Eldorado Program.
 KFWB—4:30 Radio Varieties.
 KGER—Ballads; 4:30 Popular Music.
 KGFJ—Studio Program.
 KHJ—Matinee Melody Masters.
 KMIC—Variety Program; 4:30 Request records.
 KMTR—The Dansant.
 KNX—Lost and Found Dept. and Stock Reports; 4:30 C. P. R.'S Musical program.
 KTM—Records; 4:45 Tap Dancing Lesson.
 KDYL—Matinee Dance Hour.
 KTAB—Home Towners.
 KGW—Organ Recital.

5:00 P. M. to 6:00 P. M.

KOL—Dinner Hour Concert.
 KEJK—Bob Roe and his Southern Serenaders.
 KFI—5:45 Stock Market Reports.
 KFOX—Organ Recital from Merithews;
 KFQZ—Merchant's Musical Review.
 KFSD—Hollywood Girls Novelty Trio.
 KFSD—Nightly Musical Review.
 KFVD—Timely Topics.
 KFWB—Radio Varieties.
 KGER—Wurlitzer Organ.

KGFJ—Market Reports; Organ Recital; 5:30 Hollywood Girls.
 KHJ—The "Story Man; 5:30 Don Lee Inc. Dance Band.
 KMIC—Request Records; 5:30 Harmony Hawaiians.
 KMTR—Sunset Hour; 5:45 Herald News.
 KNX—Travelogue; 5:15 "Own Your Own Home" by Chet Mittendorf; 5:45 Town Crier Amusement Tips.
 KDYL—Uncle Ben and the Kangaroo Club; 5:30 The Days' Popular Tunes.
 KTAB—Brother Bob's Frolic Hour.
 KGW—(NBC) Fleischmann Program.

6:00 P. M. to 7:00 P. M.

KOL—Sessions Chimes; 6:30 Ranch Dance Band.
 KFI—Nick Harris Detective Story and program.
 KFOX—Lost and Found Dept; 6:05 Hollywood Girls Trio; 6:30 Doris, Grace and Foster, popular songs.
 KFSD—News Items; 6:15 Manuel Dehesa.
 KFWB—6:20 Late Recordings; 6:30 Harry Jackson's Pig'n Whistle Entertainers.
 KGER—News Bulletins; 6:15 Dick Love's Entertainers; 6:45 Sportologue.
 KGFJ—Harmony Hawaiian Trio.
 KHJ—Wesley Tourtellotte's organ recital, with singers; 6:45 World News.
 KMIC—Harmony Hawaiians; 6:30 Dance Band.
 KMTR—Vine St. Players; 6:35 Rhythm Kings.
 KNX—Organ program.
 KDYL—Dinner Hour Varieties.
 KTAB—Dr. Whetstone; 6:30 Twilight Hour.
 KGW—Studio Program.

7:00 P. M. to 8:00 P. M.

KOL—Frank Coombs "Old Uncle Henry."
 KFI—(NBC) Halsey Stuart; 7:30 (NBC) Standard Oil Co. program.
 KFOX—Studio Orchestra; 7:30 Buster Wilson's Orchestra.
 KFSD—Cramer's Concert Trio with John Wells.
 KFWB—Hollywood Athletic Club Orchestra 7:30 Jean Cowan; 7:45 Sports Talk.
 KGER—Rhythm Makers; 7:30 Long Beach Municipal Band Concert.
 KGFJ—Nat Winecoff, ballads; Albert Keglavich, violinist, Blanche Cooper, pianist.
 KHJ—Sierra Symphonists, Raymond Paige, conducting.
 KMIC—Old Time Numbers.
 KMTR—Rhythm Kings; 7:35 "Around the World in Music."
 KNX—Time Signals; Ichimato and Serathimato, two Nipponese Boys.
 KDYL—Baseball News; 7:15 The Montagues; 7:30 Studio Time.
 KTAB—Recordings; 7:30 Walter Rudolph's piano recital.
 KGW(NBC) Halsey Stuart; 7:30 (NBC) Standard Symphony concert.

8:00 P. M. to 9:00 P. M.

KOL—Drama. KOL Players; 8:30 Stay-young program. (KOIN)



KFI—Standard Oil Co. prog.; 8:30 (NBC) United Reproducers Corp.

KFOX—Texas Cowboys, Old Time Music; 8:30 Long Beach Municipal Band.

KFSD—Janet Stanley and Viva Crise; 8:30 Studio Program.

KFVD—8:30 Happy Go-Lucky Trio.

KFWB—The Lyric Entertainers; 8:30 Gilmore Oil Co. program by Bert Butterworth.

KGER—Lyric Radio re-broadcast from KFWB; 8:30 Long Beach Municipal Band. KGFJ—Studio Players; 8:30 Pastel Concert Trio.

KHJ—Richfield Oil Program.

KMTR—"Around the World in Music"; 8:30 the Hornets.

KNX—Lyric Radio Co. re-broadcast from KFWB; 8:30 KNX Artists.

KTM—Santa Monica Band Concert.

KDYI—8:30 (CBS) National Forum from Washington.

KTAB—India Wise Men; 8:30 Arthur Shaw, organist.

KGW—(NBC) Standard Symphony Hour; 8:30 (NBC) United Reproducers.

9:00 P. M. to 10:00 P. M.

KOL—Ken Stuart "A Little Sunshine"; Margaret Gray, piano.

KEJK—Silverwood's program; 9:30 Felipe Delgado, Spanish baritone and orchestra.

KFI—North American Bldg. & Loan Assn. program; 9:30 Harmonettes.

KFOX—Cinderella Roof Ballroom; 9:45 El Patio Ballroom.

KFQZ—KFQZ String Trio.

KFSI—Royal Hawaiians, Helen Kirkham.

KFVD—Auburn Concert Orchestra.

KFWB—"Who Killed the Caretaker?" mystery serial; 9:30 Hollywood String Quintet; Geo. Gromlick, baritone.

KGER—Triolian Trio; 9:30 Nelson's Original Half-hour.

KGFJ—Pastel Concert Trio.

KHJ—Veedol program (from KFRC); 9:30 Don Lee Symphony.

KMTR—The Hornets; 9:30 Re-creation of Prize Fights.

KNX—Rio Grande Oil Co. courtesy Program.

KTM—Pickwick Pickings Revue; KTM Feature Artists.

KDYI—(CBS) Hotel Paramount Orchestra; 9:30 (CBS) Guy Lombardo and his Royal Canadians.

KTAB—"Cocoanuts" with Estelle Moran, Herb Scharlin, Max Firestone, Lorey Wolfe, the Pickwickians Dance Orchestra.

KGW—(NBC) Memory Lane Program; 9:30 Studio.

10:00 P. M. to 11:00 P. M.

KOL—Sessions Chimes; Studio program. KEJK—Playlet; 10:30 Knoll and Lee—popular songs.

KFI(NBC) Green Room.

KFOX—El Patio Ballroom.

KFQZ—Esther Laurette, Laura Wheeler.

KFSD—Ratliff's Academy of Dancing.

KFVD—Hal Roach Comedy Gossip.

KFWB—Geo. Olson's Roosevelt Hotel Orchestra; 10:30 Proff Moore's Montmartre Cafe Orchestra.

KGER—Harmony Three; Joseph Bjorndahl baritone; 10:30 Studio program.

KGFJ—Curtis Mosby and his Dixieland Blue Blowers.

KHJ—Earl Burtnett's Biltmore Hotel Dance Orchestra.

KMIC—10:30 Hollywood Roof Orchestra.

KMTR—Paul Terrot, Laughner-Harris Orchestra.

KNX—Ted Lewis Cocoanut Grove Orchest.

KTM—Pickwick Pickings Revue.

KDYI—World Book Man; 10:05 Studio program.

KTAB—"Cocoanuts" with Pickwickians Dance Orchestra and Artists.

KGW—Associated Brass Band from KOMO

11:00 P. M. to 12:00 P. M.

KEJK—Request Record Program.

KFI—KFI News Bureau.

KFOX—Majestic Ballroom; 11:30 Silver Spray Orchestra.

KFQZ—The Two Harmony Boys, Ban and Joe.

KFSI—Hotel Del Coronado Orchestra.

KFVD—Sebastian's Cotton Club Orchestra.

KFWB—Proff Moore's Montmartre Cafe Orchestra to 11:30.

KGER—Wurlitzer Organ with Herbert Nixon.

KGFJ—Majestic Ballroom.

KHJ—Earl Burtnett's Biltmore Hotel Dance Orchestra.

KMIC—Hollywood Roof Orchestra.

KMTR—Adventures of Cholly Lung.

KNX—Ted Lewis and his Cocoanut Grove Orchestra.

KTM—Coffee Dan's Frolic.

KDYI—Musical Favorites.

KTAB—Night Owls.

KGW—Estate Weather Man; Organ recital.

FRIDAY, OCTOBER 18

7:00 A. M. to 8:00 A. M.

KOL—Eye Opener program.

KEJK—Frank Raef's Setting-up Exercises.

KFOX—"Hello, Everybody"; 7:30 News.

KFQZ—J. V. Baldwin Motor Co. program

KFVD—Hal Roach Happy-Go-Lucky Trio.

KGFJ—Breakfast Program.

KHJ—Physical Culture; 7:30 Stock Exchange Reports; 7:40 Don Lee Program.

KMTR—New Idea Man's Wholesome Food Breakfast Club.

KNX—7:15 "Pep & Vigor" Exercises; 7:45 "Home Folks" Exercises.

KTM—Dude Ranch program.

KTAB—Rastus and Sambo, the Eye-openers.

KGW—7:45 Devotional Services.

8:00 A. M. to 9 A. M.

KOL—Program of General Interest.

KEJK—Pot O' Gold.



KFI—Shell Happy Time from KPO.
 KFOX—Records; 8:30 Hirshfield's High Steppers.
 KFQZ—Popular Recordings.
 KFSD—8:45 Good Cheer program.
 KFVD—Hal Roach Happy-Go-Lucky Trio.
 KGER—"Up with the Sun" program.
 KGfJ—Breakfast program; 8:30 Gordon Smith's Shopping Guide; Requests.
 KHJ—Alarm Clock.
 KMIC—Rae and Her Pals; the Commanders.
 KMTR—New Idea Man's Breakfast Club; 8:57 Time Signals.
 KNX—Records; 8:15 Inspirational Talk; "A Menu for Sunday Dinner"; 8:55 Time Signals.
 KTBI—Uncle Harry's Bible Story; 8:15 Announcer's Hour.
 KTM—Bert's Request Program.
 KTAB—Recordings.
 KGW—(NBC) Shell Happy Time.

9:00 A. M. to 10:00 A. M.

KOL—Program of General Interest; 9:45 Talk by Dr. H. Arthur.
 KEJK—Recordings; 9:15 Health Talks.
 KFI—Bess Kilmer's Helpful Hints to Housewives.
 KFOX—Organ recital; 9:30 Hawaiian program and Novelty Songs.
 KFQZ—Selections.
 KFSD—Morning Musical Review.
 KFVD—Travelogue.
 KFWB—Harmony Hour.
 KGER—Popular Vocal Music; 9:30 Devotional Hour; 9:45 Joseph Bjorndahl, baritone.
 KGfJ—Gordon Smith's Shopping Guide; 9:30 Rango the Mystery Man.
 KHJ—Recordings; 9:45 Dr. Paul Dorah, health talk.
 KMIC—Rae and her Pals; The Commanders
 KMTR—Mildred Kitchen, Economics; 9:15 Tuncful Tunes.
 KNX—9:15 Glidden Paint Co. program; 9:30 Radio Shopping News.
 KTBI—Announcer's Hour; 9:15 Radio Bible Course; 9:45 Superintendent's Hour.
 KTM—Bert's Request Program.
 KTAB—Morning Prayer Services; 9:30 Recordings.
 KGW—News; 9:10 the Oregonian Cooking School; 9:30 Town Crier.

10:00 A. M. to 11:00 A. M.

KOL—Sessions Chimes; Studio program.
 KEJK—10:15 Jack Kiefer, the Ad-Visor.
 KFI—(NBC) Du Barry Radio Talks; 10:30 Women's Magazine of the Air. (NBC)
 KFOX—Organ recital from Merithews.
 KFQZ—Recordings.
 KFSD—Amy Lou Shopping Hour.
 KFWB—Prudence Penny; 10:30 Radio Varieties.
 KGER—Popular vocal music; 10:15 Cline Chittick, harmonica, 10:30 Enna Jet-tick Twins.
 KGfJ—Organ recital from KFOX.
 KHJ—Agnes White "At Our House."
 KMTR—Rhythmic Offerings.

KNX—Town Crier; 10:30 Madame Marie Beauty Talk; 10:45 Kate Vaughn.
 KTBI—Superintendent's Hour; 10:35 Dr. John C. Page.
 KTAB—Recordings; 10:30 Dr. B. L. Corley.
 KGW—Du Barry talk; 10:45 Town Crier; 10:30 (NBC) Women's Magazine of the Air.

11:00 A. M. to 12:00 A. M.

KOL—Studio program.
 KEJK—11:15 Items of Interest.
 KFI—(NBC) Women's Magazine of the Air; 11:30 "Mental Exercises."
 KFOX—Beauty Talk; Studio Orchestra; 11:30 News; 11:50 Studio Orchestra.
 KFQZ—Popular Recordings.
 KFSD—Amy Lou Shopping Hour; 11:15 Health Talk; 11:30 Lloyd Peck's Service Hour.
 KFVD—Bess Kilmer's Helpful Hints to Housewives.
 KFWB—Radio Varieties; 11:45 Dale Imes' Melody Trio.
 KGER—Rhythm Makers.
 KGfJ—Recordings.
 KHJ—Recordings; 11:15 Spanish Lesson; 11:30 Univ. of So. Calif. "Trojan" period.
 KMTR—The Musical Treasure Chest.
 KNX—Marmola "So-A-Tone" program at 11:15.
 KTBI—Dr. John C. Page; 11:30 Dr. J. E. Jaderquist.
 KTAB—Barney Lewis' Tabloid of the Air.
 KGW—(NBC) Women's Magazine of the Air; 11:30 Music Records.

12:00 A. M. to 1:00 P. M.

KOL—Chamber of Commerce.
 KEJK—Musical Program.
 KFI—Agriculture Talk; 12:25 Franklin L. Graves Talk.
 KFOX—Hollywood Girls, Novelty Trio.
 KFQZ—Al Caji and Soloists.
 KFSD—Lloyd Peck's Service Hour to 12:30.
 KFVD—Tom Breneman, the Recommendation Man; 12:30 Tom and Wash.
 KFWB—Dale Imes' Melody Trio to 12:15 12:30 Radio Varieties.
 KGfJ—Recordings.
 KHJ—Biltmore Hotel Concert Orchestra; 12:30 World Wide News; 12:45 Leigh Harline in organ recital.
 KMIC—Records.
 KMTR—World News; 12:15 Modern Bits of Music.
 KNX—Time Signals; 12:30 Bell Laboratories program.
 KTBI—Chimes and Scripture to 12:15.
 KTAB—Sterling Cosmopolitans.
 KGW—Music Records.

1:00 P. M. to 2:00 P. M.

KEJK—Sleepy time Suggestions; 1:30 Royal Purifier program.
 KFOX—Masonic Luncheon; Originality Girls.
 KFQZ—Records.
 KFVD—G. Allison's Radio Home program.

THE BIG THREE OF RADIO





227

The most perfect detector made — that's why SPEED 227's cost more for us to make, but not for you to buy. Burn-out proof! Fast heating — 5 seconds flat (not by words — by test!)

224

New? Not to us. In production in 1928 when demand was only experimental. While others have been announcing, we have been improving. That's what foresight and tube-making experience were able to do.

245

Perfect and in production weeks ahead of others. Very rigidly constructed — extra bracing of the elements and special anchoring of filament in the SPEED 245 give added volume and finer tone quality.

THE SPEED Tube line is, of course, complete*.
But these are the "Big Three" now — the ones you're interested in particularly, because they're the ones your customers want. Carry the quality 227's, 224's, 245's, — SPEED — and your tube business is assured.

The SPEED proposition demands the consideration of every wide-awake jobber and dealer: as a matter of good business. Work fast — write at once — franchises are going fast.



84-90 No. Ninth St., Brooklyn, N. Y.

MAKERS OF RADIO TUBES SINCE 1924

Representatives

SPEED SALES COMPANY

1321 Maple Ave., Los Angeles, Cal.



KFWB—Radio Varieties; 1:15 Proff Moore's Montmartre Cafe Orchestra; 1:15 Radio Varieties.
 KGER—Hawaiian Music; 1:30 Wurlitzer Organ.
 KGFJ—Recordings; 1:30 U. S. Marfnes.
 KHJ—Leigh Harline in organ recital; 1:30 Charlie Wellman.
 KMIC—Records.
 KMTR—Modern Bits of Music.
 KNX—1:30 Bookworms.
 KTBH—Hazel Shively, contralto; 1:30 News of Christian Work.
 KTM—Bertie Kober, organist.
 KTAH—Chapel of the Chimes; 1:30 Fan-
 chon's Style Chats.
 KGW—U. S. Market Reports to 1:15.

2:00 P. M. to 3:00 P. M.

KOL—2:45 Studio program.
 KEJK—Emerald Isle Request Program.
 KFI—Winnie Fields Moore; 2:30 "Pheno-
 mena."
 KFOF—Health Talk; 2:15 Records; 2:30
 Long Beach Municipal Band.
 KFQZ—Popular Recordings.
 KFSD—2:30 Organ recital, Balboa Park.
 KGER—Triolian Trio; 2:30 Long Beach
 Municipal Band Concert.
 KGFJ—Studio Program.
 KHJ—Fada Radio Program.
 KMIC—Variety program.
 KMTR—Timely Topics; 2:15 Spanish pro-
 gram.
 KNX—L. E. Evening Express records and
 announcements to 2:30.
 KTBH—Visiting Pastor to 2:30.
 KTM—Lola, the Angel of the Air; 2:30
 Santa Monica Band Concert.
 KTAH—Arthur Shaw's organ recital.

3:00 P. M. to 4:00 P. M.

KOL—Studio program.
 KEJK—"Say it with Music."
 KFOF—Organ recital from Merithews; 2:30
 Long Beach Municipal Band.
 KFQZ—Selections.
 KFSD—Organ Concert from Balboa Park
 to 3:30.
 KFYD—Auburn Concert Orchestra.
 KGER—Long Beach Municipal Bond Con-
 cert.
 KGFJ—Studio Program.
 KHJ—Eric Mayne, Shakespeare Readings;
 3:15 Dr. Walter Herzog's school pro-
 gram; 3:30 Council of International
 Relations.
 KMIC—Variety program.
 KMTR—Little Symphonies.
 KNX—3:30 Federation of Women's Clubs
 programs.
 KTM—Santa Monica Band Concert; 3:30
 Records.
 KTAH—Matinee Melodists.

4:00 P. M. to 5:00 P. M.

KOL—Studio program; 4:45 News Items
 and Weather Reports.
 KEJK—Artist Series—Classic Program.
 KFI—E. H. Rust, Nurseryman; 4:30 Big
 Brother.

KFOF—News Report; 4:30 Varsity Boys.
 KFQZ—Records.
 KFYD—Eldorado Program.
 KFWB—Radio Varieties.
 KGER—Ballads; 4:30 Popular Music.
 KGFJ—Studio Program.
 KHJ—Elvia Allman's "Surprise Package."
 KMIC—Variety Program; 4:30 Request re-
 cords.
 KMTR—The Dansant.
 KNX—Lost and Found Dept., Stock Re-
 ports; 4:30 C. P. R.'s musical program
 KTM—Records.
 KDYL—Matinee Dance Hour.
 KTAH—Home Towners.
 KGW—Organ Recitals.

5:00 P. M. to 6:00 P. M.

KOL—Dinner Hour Concert.
 KEJK—Bob Roe, his Southern Serenaders.
 KFI—Ruth Haddock "Essays in Song";
 5:45 Stock Market Reports.
 KFOF—Organ Recital from Merithews;
 Hollywood Girls Trio.
 KFQZ—Merchant's Evening Review.
 KFSD—Nightly Musical Review.
 KFYD—Timely Topics.
 KFWB—Radio Varieties.
 KGER—Wurlitzer Organ.
 KGFJ—Market Reports and Organ recital;
 5:30 Variety Program.
 KHJ—The Story Man; 5:30 Don Lee
 Dance Band.
 KMIC—Request Records; 5:30 Harmony
 Hawaiians.
 KMTR—Sunset Hour; 5:45 Herald News.
 KNX—Travelogue; 5:15 Own Your Own
 Home" by Chet Mitendorf; 5:30 Town
 Crier's Amusement Tips.
 KDYL—Uncle Ben and the Kangaroo; 5:30
 The Day's Popular Tunes.

6:00 P. M. to 7:00 P. M.

KOL—Sessions Chimes.
 KFI—(NBC) Interwoven Pair; 6:30 (NBC)
 Philco Theater Memories.
 KFOF—Lost and Found Dept; 6:05 Holly-
 wood Girls Novelty Trio; 6:30 Kaai
 Hawaiian Trio.
 KFSD—News Items; 6:15 KFSD Concert
 Trio with Mildred Marini.
 KFWB—6:20 Recordings; 6:30 Harry Jack-
 son's Pig'n Whistle Orchestra.
 KGER—News Bulletins; 6:15 Sunset Blue
 Killers; 6:15 Sportologue.
 KGFJ—Harmony Hawaiians Trio.
 KHJ—Wesley Tourtelle in organ recital;
 6:15 World-wide News.
 KMIC—Harmony Hawaiians; 6:30 Marie
 Hockings at the Organ.
 KMTR—Miniature String Players; 6:15
 Rhythm Kings.
 KNX—Organ program.
 KDYL—Dinner Hour Varieties.
 KTAH—Dr. Wetstone; 6:30 Twilight Hour.
 KGW—(NBC) Interwoven Stocking Pro-
 gram; Philco Theater Memories NBC

7:00 P. M. to 8:00 P. M.

KOL—Eulala Dean, vocalist, Margaret Gray,
 piano.



KFI—(NBC) Armstrong Quakers; 7:30 (NBC) The Armour Hour.
 KFOX—Four Bluebirds, Novelty Vocal and Instrumental Trio; 7:30 Buster Wilson's Orchestra.
 KFSD—Thearle Music co. program.
 KFWB—Rhythm Boys; Esther White and Lucky Wilber, harmony numbers.
 KGER—Diamond Hawaiian Trio; 7:30 Long Beach Municipal Band.
 KGEJ—Nat Winecoff, ballads; Blanche Cooper, pianist.
 KHJ—Delton Motor Program; 7:30 Desmond's program.
 KMIC—Marie Hockings at the organ; 7:30 Country Jane and KMIC Trio.
 KMTR—Black Forest Ensemble; 7:15 Rhythm Kings.
 KNN—Time Signals; Bundy and Albright program; 7:30 Pacific System Homes.
 KTHI—International Sunday School Lesson.
 KDYL—Studio program.
 KTAB—Recordings; 7:30 Studio program.
 KGW—Armstrong Quakers; 7:30 (NBC) Armour program.

8:00 P. M. to 9:00 P. M.

KOL—Hal Chase and Investment Program.
 KFI—(NBC) RCA Hour.
 KFOX—Long Beach Bootery Hour, quartette, Eva Balfour and Gene Pinkton.
 KFSD—Dan Parker's Old Time Program.
 KFVD—8:30 Happy-Go-Lucky Trio.
 KFWB—KFWB Concert Orchestra; Tudor Williams, baritone.
 KGER—Long Beach Municipal Band Concert.
 KGEJ—Studio Players, 8:30 Pastel Concert Trio.
 KHJ—Forest Lawn Continuity program.
 KMIC—Country Jane and KMIC Trio; 8:30 Hollywood Roof.
 KMTR—Rhythm Kings; 8:15 "Ring out Old Ring in the New" Vibraphone program; 8:30 Music Lovers' program.
 KNN—Royal Order of Optimistic Do-Nuts.
 KTHI—Evening School Lecture.
 KTM—El Camino quintet; 8:30 Santa Monica Band Concert.
 KDYL—Studio program; 8:30 (CBS) Jesse Crawford, organist.
 KTAB—Arthur Shaw, organist, and Carl Tobin, tenor-balladist.
 KGW—(NBC) RCA Hour.

9:00 P. M. to 10:00 P. M.

KOL—Ken Stuart, "A Little Sunshine"; 9:15 Tucker's Everstate Dance Band.
 KEJK—Terry Koechig, piano solos, songs and musical readings; 9:30 Orchestra and Tudor Williams, baritone.
 KFI—(NBC) Borden Milk program; 9:30 (NBC) Union Service Station Four.
 KFOX—Cinderella Roof Ballroom; 9:45 El Patio Ballroom.
 KFQZ—String Trio.
 KFVD—Auburn Concert Orchestra.
 KFSD—George Ballantine; 9:30 Studio Program.
 KFWB—Yascha Borowsky's Royal Russians; Tamara Shavrova, Russian Soprano.

KGER—Herbert Nixon at Wurlitzer organ; 9:30 Nelson's Original Half-hour.
 KGEJ—Pastel Concert Trio.
 KHJ—(CBS) True Story Hour.
 KMIC—Hollywood Roof... 9:30 Moscow Inn.
 KMTR—Million Dollar Cherniavsky Or.; 9:30 Favorites from Light and Comic Opera; mixed quartet.
 KNN—"Lion Tamers" by Gilmore Oil Co.; 9:45 Main Event from Hollywood Legion Stadium.
 KTHI—Studio Musical Hour.
 KTM—Concert Ensemble, Lucy Day, soprano, Arthur Hall, tenor.
 KDYL—Varieties; 9:30 "The Senator from Sanpit"; 9:55 World Book Man.
 KTAB—Pickwick Symphonette; 9:30 KTAB Mystery Play.
 KGW—Longline Time Signals, Bordens Dairy; 9:30 (NBC) Union Oil Co. program.

10:00 P. M. to 11:00 P. M.

KOL—Sessions Chimes; 10:15 Tucker's Everstate Dance Band.
 KEJK—Popular Orchestra program; 10:30 Ben Light and Brother Paul.
 KFI—(NBC) In the Parlor; 10:30 (NBC) The Nomads.
 KFOX—El Patio Ballroom.
 KFQZ—Anna Martin, Marjorie Forster and Ukelele Stan.
 KFSD—Ratliff's Academy of Dancing.
 KFVD—Hal Roach Comedy Gossip.
 KFWB—George Olson's Hotel Roosevelt Dance Orchestra.
 KGER—Hungarian Gypsy Orchestra; Perry Selby, tenor and Bertha Brewster, contralto.
 KGEJ—Curtis Mosby's Dixieland Blue Blowers.
 KHJ—Earl Burnett's Biltmore Hotel Orchestra.
 KMIC—Moscow Inn; 10:30 Hollywood Roof Dance Orchestra.
 KMTR—Paul Perrot, Laughner-Harris Orchestra.
 KNN—Main Event from Hollywood Stadium; 10:30 Ted Lewis Coconut Grove Orchestra.
 KTM—Male trio and Scott Bradley, pianist, 10:30 Musical Flyers Dance Band, Jack Ross, tenor.
 KDYL—(CBS) True Story Hour.
 KTAB—Pickwick Symphonette with Joan Ray, contralto, Doris Turner, soprano and Jane Sands, pianist.
 KGW—Dance Band, 10:30 Estate Weather Man; Hoot Owls.

11:00 P. M. to 12:00 P. M.

KEJK—Request Record Program.
 KFI—News Bureau.
 KFOX—Majestic Ballroom Orchestra; 11:30 Silver Spray Orchestra.
 KFQZ—Rose Horwitz, Al Cajal.
 KFSD—Doc Ross and Hotel Del Coronado Orchestra.
 KFVD—Sebastian's Cotton Club Orchestra.
 KFWB—Proff Moore's Montmartre Cafe Dance Orchestra.
 KGER—Joe Lindenbaum and his Coconut Grove Orchestra from Breakers Hotel



KGFJ—Majestic Ballroom.
 KHJ—Earl Burnett's Biltmore Hotel Orchestra.
 KMIC—Hollywood Roof Dance Orchestra.
 KNN—Ted Lewis and his Coconut Grove Orchestra.
 KTM—Coffee Dan's Frolic.
 KDYL—Dance Music.
 KTAB—The Night Owls.
 KGW—Hoot Owls.

SATURDAY, OCTOBER 19

7:00 A. M. to 8:00 A. M.

KOL—Eye Opener program.
 KEJK—Frank Roefer's Setting-up Exercises.
 KFOX—"Hello, Everybody"; 7:30 News Items.
 KFQZ—J. V. Baldwin Motor Co. program.
 KFVD—Hal Roach Happy-Go-Lucky Trio.
 KGFJ—Breakfast Program.
 KHJ—Physical Culture; 7:30 Stock Exchange Rpts.; 7:40 Don Lee program.
 KMTR—New Idea Man's Wholesome Food Breakfast Club.
 KNN—7:15 "Pop & Vigor" Exercises; 7:45 "Home Folks" Exercises.
 KTM—Bude Ranch program.
 KTAB—Rastus and Sambo, Eye Openers.
 KFSO—1:35 Book Review by Miss Plaister.
 KGW—7:45 Devotional Services.

8:00 A. M. to 9 A. M.

KFO—Program of General Interest.
 KEJK—Pot O' Gold.
 KFI—Shell Happy Time from KPO
 KFOX—Records; 8:15 Hirshfeld's High Steppers.
 KFQZ—Popular Recordings.
 KFSO—8:30 Spanish Lesson; 8:45 Good Cheer program.
 KFVD—Hal Roach Happy-Go-Lucky Trio.
 KGER—"Up with the Sun" Program.
 KGFJ—Breakfast Program; 8:30 Gordon Smith's Shopping Guide; Requests.
 KHJ—Early Birds.
 KMIC—Rae and her Pals; the Commanders.
 KMTR—New Idea Man's Breakfast Food Club; 8:57 Time Signals.
 KNN—Records; 8:15 Inspirational Talk; 8:55 Time Signals.
 KTM—Bert's Request Program.
 KTAB—Recordings.
 (NBC) Shell Happy Time.

9:00 A. M. to 10:00 A. M.

KOL—Program of General Interest.... 9:45 Talk by Dr. H. Arthur.
 KEJK—New Recordings; 9:15 Health Talk.
 KFOX—Hirshfeld's High Steppers; 9:20 Organ recital; 9:30 Hawaiian program.
 KFQ—Selections.
 KFSO—Morning Musical Review.
 KFVD—Dan Maxwell, Scotch Comedian.
 KFWB—Radio Varieties.
 KGER—Novelties; 9:15 Popular Music; 9:15 Joseph Bjorndahl and Dick Dixon.
 KGFJ—Gordon Smith's Shopping Guide;

9:30 Rango the Mystery Man.
 KHJ—Breakfast Nook Philosophy; 9:30 Julie Wintz; Orchestra ((CBS)).
 KMIC—Rae and her Pals; the Commanders.
 KMTR—Mildred Kitchen, economics; 9:15 Tuneful Tunes.
 KNN—Radio Shopping News.
 KTM—Bert's Request Program.
 KTAB—Morning Prayer Services; 9:30 Recordings.
 KGW—Oregonian Cooking School; 9:20 Town Crier.

10:00 A. M. to 11:00 A. M.

KOL—Session's Chimes; Children's Hour.
 KEJK—Jack Kiefer, the Ad-Visor.
 KFI—(NBC) National Farm and Home Hour.
 KFOX—Organ recital from Merithew's.
 KFQZ—Recordings.
 KFSO—Amy Lou Shopping Hour.
 KFWB—Radio Varieties.
 KGER—Pop. Music; 10:15 Cline Chittrick, harmonica; 10:30 Enna Jettick Twins; 10:45 Beauty Talk.
 KGFJ—Organ recital from KFOX.
 KHJ—Julie Wintz (CBS); 10:15 Harold Etern and His Orchestra (CBS).
 KMTR—Rhythmic Offerings.
 KNN—Town Crier; 10:30 L. A. Evening

MEN WANTED

To learn radio—Positions waiting grads. Practical and Technical Training. Classes Tues., Wed. and Fri. evenings. Enroll now for class starting Oct. 2nd. Terms to suit you.

RADIO COLLEGE of CAL.

921 West 6th Street
 Phone VA 0902



Express records and announcements.
KTAB—Recordings; 1030 Dr. B. L. Corley.
KGW—National Home Hr.; 10:45 Plummer.

11:00 A. M. to 12:00 A. M.

KEJK—Items of Interest.
KFI—(NBC) Pennsylvania-Calif. Football Game.
KFOX—Beauty Talk; 11:10 Studio Orchest.; 11:30 News Reports; 11:50 Studio Orchestra.
KFQZ—Popular Recordings.
KFSD—Amy Lou Shopping Hour; 11:15 Health Talk; 11:30 Lloyd Peck's Service Hour.
KFWB—Radio Varieties; 11:45 Dale Ime's Melody Trio.
KGER—Rhythm Makers.
KGFJ—Recordings.
KHJ—Louis Klein's harmonica program; 11:15 Recordings; 11:30 Leslie Brigham, baritone, Mona Content, pianist.
KMTR—The Musical Treasure Chest.
KTAB—Barney Lewis' Tabloid of the Air.

12:00 A. M. to 1:00 P. M.

KOL—Organ recital; 12:30 Matinee Melodies.
KEJK—Musical Program.
KFOX—Hollywood Girls Novelty Trio.
KFQZ—Al Cajal and Soloists.
KFSD—Lloyd Peck's Service Hour to 12:30
KFVD—Tom Breneman, the Recommendation Man; 12:30 Tom and Wash.
KFWB—Dale Ime's Melody Trio to 12:15; 12:30 Radio Varieties.
KGFJ—Recordings.
KHJ—Biltmore Hotel Concert Orchestra; 12:30 World Wide News; 12:45 Leigh Harline in organ recital.
KMIC—Records.
KMTR—World News; 12:15 Modern Bits of Music.
KNX—Time Signals; Bundy and Albright program; 12:30 CPR's program.
KTAB—Sterling Cosmopolitans.

1:00 P. M. to 2:00 P. M.

KOL—Nation's Melodies.
KEJK—Sleepytime Suggestions; 1:30 Royal Purifier program.
KFOX—Varsity Boys; 1:30 Originality Girls.
KFQZ—Records.
KFVD—G. Allison's Radio Home Program.
KFWB—Radio Varieties; 1:15 Proff Moore's Montmartre Cafe Orchestra.
KGER—Hawaiian Music; 1:30 Dick Dixon at Wuriltzer organ.
KGFJ—Recordings; 1:30 U. S. Marines
KHJ—Leigh Arline in organ recital; 1:30 Charlie Wellman.
KMIC—Records.
KMTR—Modern Bits of Music.
KNX—First Radio Church of the Air; 1:30 Bookworm.
KTM—Bertie Kober, pianist.
KTAB—Chapel of the Chimes to 1:30.
KGW—U. S. Market Report; 1:15 organ recital.

2:00 P. M. to 3:00 P. M.

KOL—Matinee Melodies; 2:45 Studio programs.

KEJK—Football Game from Coliseum.
KFI—U. S. C.-Occidental Football Game.
KFOX—Health Folk; 2:15 Records; 2:30 Long Beach Municipal Band.
KFQZ—Popular Recordings.
KFSD—2:30 Organ Concert from Balboa Park.
KFVD—Madame Laura's Spanish program.
KFWB—Radio Varieties; 2:15 Football Game from Coliseum.
KGER—Ballads; 2:30 Long Beach Municipal Band and Ann Meservey, pianist.
KGFJ—Studio program.
KHJ—Univ. of So. Calif.-Occidental Football Game.
KMIC—Varied program.
KMTR—Timely Topics; Spanish Program by Senorita Lujan.
KTM—Lola, the Angel of the Air; 2:30 Santa Monica Band.
KGW—Organ recital; 2:15 Musical Master Works.

3:00 P. M. to 4:00 P. M.

KOL—Studio program.
KEJK—Football Game from Coliseum.
KFI—U. S. C.-Occidental Football Game.
KFOX—Organ recital from Merithews; Long Beach Municipal Band.
KFQZ—Selections.
KFSD—Organ Concert from Balboa Park to 3:30.
KFVD—Auburn Concert Orchestra.
KFWB—Football Game from Coliseum.
KGER—Long Beach Municipal Band and Ann Meservey, pianist.
KGFJ—Studio Program.
KHJ—Univ. of So. Calif.-Occidental Football Game.
KMIC—Varied program.
KMTR—Little Symphonies.
KNX—Football Game from Coliseum.
KTM—Santa Monica Band Concert; 3:20 Records.
KTAB—Studio program.
KGW—Musical Master Works.

4:00 P. M. to 5:00 P. M.

KOL—Studio program; 4:45 News Items and weather reports.
KEJK—Football Game from Coliseum.
KFI—U. S. C.-Occidental Football Game.
KFOX—News; 4:20 Varsity Boys.
KFQZ—Records.
KFVD—Elrodado Program.
KFWB—Football Game; 4:30 Radio Varieties.
KGER—Novelties; 4:30 Edna Bond, popular singer.
KGFJ—Studio program.
KHJ—Univ. of So. Calif.-Occidental College Football Game.
KMIC—Varied program; 4:30 Request Records.
KMTR—The Dansant.
KNX—Football Game from Coliseum.
KTM—Records; 4:45 Tap Dancing Lesson.
KTAB—Home Towners.
KGW—Phil Spitalny's Orchest. 4:30 Studio program.

5:00 P. M. to 6:00 P. M.

KOL—Dinner Hour Concert.



KEJK—Bob Roe and his Southern Serenaders.

KFI—(NBC) All American Mohawk program; 5:45 Stock Market Reports.

KFOX—Organ recital from Merithews; 5:30 Hollywood Girls Trio.

KFQZ—Merchants' Evening Review.

KFSD—Nightly Musical Review.

KFVD—Timely Topics.

KFWB—Radio Varieties.

KGER—Wurlitzer Organ.

KGEJ—Market Reports and organ recital; 5:30 Hollywood Girls Trio.

KHJ—Request Records; 5:30 Organ Recital from KFRG.

KMIC—Request Records; 5:30 Harmony Hawaiians.

KMTR—Sunset Hour; 5:15 Herald Skit.

KNX—Travelogue; 5:15 "Owa Your Own Home" by Chet Mittendorf; 5:45 Town Crier's Amusement Tips.

KTAB—Brother Bob's Frolic Hour.

KGW—(NBC) All American Mohawk Corp. program; 5:30 Studio program.

6:00 P. M. to 7:00 P. M.

KOL—Sessions Chimes; Studio program; 6:30 Geo. Maddox, tenor, Margaret Gray, pianist.

KFI (NBC) General Electric Hour.

KFOX—Lost and Found Dept.; 6:05 Hollywood Girls Novelty Trio; 6:30 Motor Tires quartet.

KFSD—News Items; 6:15 Owen Clark's Orchestra.

KFWB—6:20 Recordings; 6:30 Harry Jackson's Pig'n Whistle Entertainers.

KGER—News Bulletins; 6:15 Dick Love's Entertainers; 6:45 Sportalogue.

KGEJ—Harmony Hawaiian Trio.

KHJ—(CBS) Graybar Electric program;

6:30 Wesley Tourtellatte, organist; 6:45 World-Wide News.

KMIC—Harmony Hawaiians; 6:30 Dance Band.

KMTR—Wedgwood Nowell, "Playgoer's Club"; 6:30 Rhythm Kings.

KNX—Organ program.

KTAB—Dr. Wetstone; 6:30 Twilight Hour

KGW—General Motors Program.

7:00 P. M. to 8:00 P. M.

KFI—(NBC) Lucky Strike Hour.

KFOX—Doris, Grace and Foster, popular songs; Buster Wilson's Orchestra.

KFSD—KFSD—Concert Trio.

KFWB—Bargit Hegeldus String Ensemble; Vernon Rickard, tenor.

KGER—Church Announcements; 7:05 Trio-Lian Trio; 7:30 Long Beach Band.

KGEJ—Nat Winecoff, ballads; Albert Keglovich, violinist; Charlie Davis, uke; Blanche Cooper, pianist.

KHJ—Raymond Paige and his Band.

KMIC—Dance Band to 7:30.

KMTR—The Rhythm Kings; 7:30 Eddie Nunn, Golf Talk; 7:45 "Ring Out the Old—Ring in the New" Vibraphone program.

KNX—Paramount Publix Hour (CBS).

KTAB—Recordings; 7:30 Walter Rudolph piano recital.

KGW—(NBC) Luckdy Strike Hour.

8:00 P. M. to 9:00 P. M.

KFI—(NBC) Temple Corp. program; 8:30 Earle C. Anthony program.

KFOX—Football Talks; 8:15 Long Beach Municipal Band.

KFSD—Rosie Roseman; 8:30 Blanche Wood

KFVD—Happy-Go-Lucky Trio.

KFWB—Mona Motor Oil co. program with Mona Motor Oilers and Soloists.

KGER—Long Beach Muni. Band Concert.

KGEJ—Studio Players; 8:30 Pastel Concert Trio.

KHJ—KHJ Nite Court.

KMTR—Ray and HazelJSkit; 8:30 Blue-jays.

KNX—Announcements of Los Angeles Churches; 8:05 KNX Feature Artists.

KTM—Musical Flyers Dance Band; Joyce Whitman, blues; 8:30 Santa Monica Band Concert.

KTAB—"Pickwick Follies" with Pickwickians Dance Orchestra, and Artists.

KGWJ (NBC) Temple Program; 8:30 Yale Union Laundry Program.

9:00 P. M. to 10:00 P. M.

KOL—Ken Stuart, "A Little Sunshine."

KEJK—KEJK—Radio Revue with Orchest. Harmony Trio, Blue singers and solo

Novelties.

KFI—(CBC) Nat. Laundry Owners Assn.

KFOX—Cinderella Roof Ballroom; 9:45 El Patio Ballroom.

KFQZ—KFQZ String Trio.

KFSD—Esther Rogers, Maria Rude; 9:30 Spud Freeman.

KFVD—Auburn Concert Orchestra.

KFWB—KFWB—Concert Orchestra and Soloists.

KGER—Herbert Nixon at Wurlitzer Organ; 9:30 Betty and Wanda.

KGEJ—Pastel Concert Trio.

KHJ—Chas. Shepherd's Symphonists.

KMTR—Paul Perrot, Laughner and Harris Orchestra.

KNX—KNX Feature Artists.

KTM—Mixed quartet; Scott Bradley, pianist; 9:30 Musical Flyers Band, Loyce Whitman, blues and Polly G. Hall, pianist.

KTAB—"Pickwick Follies" with Pickwick Dance Orchestra and Artists.

KGW—(NBC) sNational Laundry Owner Program; 9:30 Studio Program.

10:00 P. M. to 11:00 P. M.

KOL—Sessions Chimes; 10:30 Tucker's Everstate Dance Band.

KEJK—KEJK Radio Revue; 10:30 Dance Orchestra.

KFI—Packard Concert Orchestra, Fryor Moore.

KFOX—Doris and Clarence, Fain's Ragmuffins; 10:30 El Patio Ballroom.

KFQZ—Anna Martin, Marjorie Forster.

KFSD—Ratliff's Academy of Dancing.

KFVD—Hal Roach Comedy Gossip.

KFWB—Geo. Olson's Roosevelt Hotel Orchestra; 10:30 O'Proff Moore's Montmartre Cafe Orchestra.

KGER—Irma Jasper, violinist, Margaret

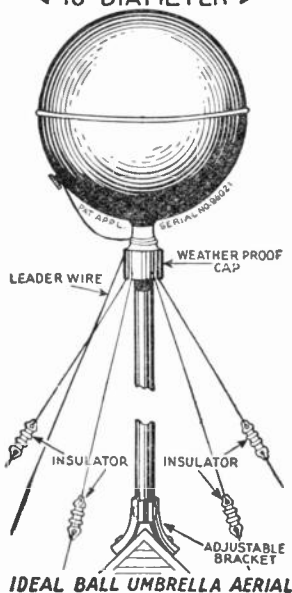


Underhill, pianist; 10:30 Studio program.
 KGFJ—Curtis Mosby's Dixieland Blue Blowers.
 KHJ—Earl Burnett's Biltmore Hotel Orchestra.
 KMIC—10:30 Hollywood Roof.
 KMTR—Paul Perrot, Laughner and Harris Orchestra.
 KTM—Concert Ensemble; Lucy Day, soprano; Arthur Hall, tenor, Will Maggini, baritone.
 KTAJ—Doris Turner, soprano; Jane Sands, pianist.
 KGW—Estate Weather Man; Dance Music.
11:00 P. M. to 12:00 P. M.
 KOI—Tucker's Everstate Dance Band.
 KBJK—Request Record Program.
 KFI—News Bureau; 11:15 KFI Midnight Frolic.

KFOX—Majestic Ballroom Orchestra; 11:30 Silver Spray Ballroom Orchestra.
 KFQZ—Esther Laurette and Lawrence Wheeler.
 KFSD—Del Coronado Hotel Dance Orchestra.
 KFVI—Sebastian's Cotton Club Orchestra.
 KFVB—Proff Moore's Montmartre Cafe Orchestra.
 KGER—Joe Lindenbaum and his Cocoanut Grove Orchestra.
 KGFJ—Majestic Ballroom.
 KHJ—Earl Burnett's Hotel Biltmore Orchestra.
 KMIC—Hollywood Roof Dance Orchestra.
 KMTR—Adventures of Cholly Lung.
 KNN—Ted Lewis and his Cocoanut Grove Orchestra.
 KTAJ—The Night Owls.
 KGW—Dance Music.

NOW! **THE PERFECT BALL** **... AERIAL**

← 10" DIAMETER →



Chromium Plated

The principal of the aerial ball has been proven as the most satisfactory method of gaining maximum efficiency from the radio set and in addition gives increased selectivity, with less static due to its being non-directional.

Another advantage of the aerial ball is its extremely attractive appearance, eliminating the usual conglomeration of aerial wires. It is simple to install and may be purchased with complete installation kit.

Prices complete with base..... **\$6.00**

Chromium Plated **\$7.00**

ESSENBEE RADIO DEVICES CO.

Frank Emmett Sales Co., Pac. Coast Rep.

324 S. San Pedro

Phone TU6367

**ASK YOUR RADIO DEALER TO SHOW
YOU THE BALL AERIAL**

STATION LOG

Kil.	Meter	Stations	Dial	Kil.	Meter	Stations	Dial
1500	199.9			1020	293.9		
1490	201.2			1010	296.9		
1480	202.6			1000	299.8		
1470	204.0			990	302.8		
1460	205.4			980	305.9		
1450	206.8			970	309.1		
1440	208.2			960	312.3		
1430	209.7			950	315.6		
1420	211.1			940	319.0		
1410	212.6			930	322.4		
1400	214.2			920	325.9		
1390	215.7			910	329.5		
1380	217.3			900	333.1		
1370	218.8			890	336.9		
1360	220.4			880	340.7		
1350	222.1			870	344.6		
1340	223.7			860	348.6		
1330	225.4			850	352.7		
1320	227.1			840	356.9		
1310	228.9			830	361.2		
1300	230.6			820	365.6		
1290	232.4			810	370.2		
1280	234.2			800	374.8		
1270	236.1			790	379.5		
1260	238.0			780	384.4		
1250	239.9			770	389.4		
1240	241.8			760	394.5		
1230	243.8			750	399.8		
1220	245.8			740	405.2		
1210	247.8			730	410.7		
1200	249.9			720	416.4		
1190	252.0			710	422.3		
1180	254.1			700	428.3		
1170	256.3			690	434.5		
1160	258.5			680	440.9		
1150	260.7			670	447.5		
1140	263.0			660	454.3		
1130	265.3			650	461.3		
1120	267.7			640	468.5		
1110	270.1			630	475.9		
1100	270.1			620	483.6		
1090	275.1			610	491.5		
1080	277.6			600	499.7		
1070	280.2			590	508.2		
1060	282.8			580	516.9		
1050	285.5			570	526.0		
1040	288.3			560	535.4		
1030	291.1			550	545.1		

WATCH RADIO PROGRAMS
for **WEEKLY SPORTING EVENTS**

ALPHABETICAL CALL LIST

Call Town

KCRC—Enid, Okla.
 KDB—Santa Barbara, Calif.
 KDKA—East Pittsburgh, Pa.
 KDILR—Devil's Lake, N. D.
 KDYL—Salt Lake City, Utah
 KEJK—Beverly Hills, Calif.
 KELW—Burbank, Calif.
 KEX—Portland, Ore.
 KFAB—Lincoln, Neb.
 KFAD—Phoenix, Ariz.
 KFBB—Havre, Mont.
 KFBBK—Sacramento, Calif.
 KFBL—Everett, Wash.
 KFDM—Beaumont, Tex.
 KFDY—Brookings, S. D.
 KFEEL—Denver, Colo.
 KFEQ—St. Joseph, Mo.
 KFGQ—Boone, Iowa
 KFHA—Wichita, Kans.
 KFHA—Gunnison, Colo.
 KFI—Los Angeles, Calif.
 KFFP—Portland, Ore.
 KFIQ—Spokane, Wash.
 KFIZ—Fond du Lac, Wis.
 KFJB—Marshalltown, Iowa
 KFJB—Oklahoma City, Okla.
 KFJI—Astoria, Ore.
 KFJM—Grand Forks, N. D.
 KFJR—Portland, Ore.
 KFJY—Fort Dodge, Ia.
 KFJZ—Fort Worth, Tex.
 KFKA—Greeley, Colo.
 KFKB—Milford, Kans.
 KFBU—Lawrence, Kans.
 KFKX—Chicago, Ill.
 KFRZ—Kirksville, Mo.
 KFLV—Rockford, Ill.
 KFLX—Galveston, Tex.
 KFMX—Northfield, Minn.
 KFNF—Shenandoah, Ia.
 KFOR—Lincoln, Neb.
 KFOX—Long Beach, Calif.
 KFPI—Dublin, Tex.
 KFPM—Greenville, Tex.
 KFPW—Siloam Springs, Ark
 KFPY—Spokane, Wash.
 KFQA—St. Louis, Mo.
 KFQD—Anchorage, Alaska
 KFQU—Holy City, Calif.
 KFQW—Seattle, Wash.
 KFQZ—Hollywood, Calif.
 KFRS—San Francisco, Calif.
 KFRU—Columbia, Ohio
 KFSO—San Diego, Calif.
 KFSG—Los Angeles, Calif.
 KFUL—Galveston, Tex.
 KFUM—Colorado Spgs, Colo.
 KFUS—St. Louis, Mo.
 KFUP—Denver, Colo.
 KFVD—Culver City, Calif.
 KFVS—Cape Girardeau, Mo.
 KFVB—Hollywood, Calif.
 KFWC—Ontario, Calif.
 KFWF—St. Louis, Mo.
 KFWI—San Francisco, Calif.

Call Town

KFWM—Oakland, Calif.
 KFND—Jerome, Idaho
 KFNF—Denver, Colo.
 KFNF—Edgewater, Colo.
 KFNR—Oklahoma City, Ok.
 KFNX—Flagstaff, Ariz.
 KFYO—Abilene, Tex.
 KFYZ—Bismarck, N. D.
 KGA—Spokane, Wash.
 KGAR—Tucson, Ariz.
 KGB—San Diego, Calif.
 KGBU—Ketchikan, Alaska
 KGBX—St. Joseph, Mo.
 KGBZ—York, Neb.
 KGCA—Decorah, Ia.
 KGCI—San Antonio, Tex.
 KGCR—Watertown, S. D.
 KGCU—Mandan, N. D.
 KGCV—Vida, Mont.
 KGDA—Dell Rapids, S. D.
 KGDE—Fergus Falls, Minn.
 KGDM—Stockton, Calif.
 KGDR—San Antonio, Tex.
 KGDY—Oldham, S. D.
 KGEF—Los Angeles, Calif.
 KGEK—Yuma, Ariz.
 KGER—Long Beach, Calif.
 KGEW—Fort Morgan, Colo.
 KGEZ—Kalispell, Mont.
 KGFF—Alva, Okla.
 KGFG—Oklahoma City, Ok.
 KGFI—Corpus Christi, Tex.
 KGFL—Los Angeles, Calif.
 KGFK—Hallock, Minn.
 KGFL—Raton, N. M.
 KGFW—Ravenna, Neb.
 KGFX—Pierre, S. D.
 KGGC—San Francisco, Calif.
 KGGE—Picher, Okla.
 KGGM—Albuquerque, N. M.
 KGHE—Pueblo, Colo.
 KGHG—McGehee, Ark.
 KGHI—Little Rock, Ark.
 KGHL—Billings, Mont.
 KGHX—Richmond, Tex.
 KGHQ—Twin Falls, Idaho
 KGIR—Butte, Mont.
 KGIW—Trinidad, Colo.
 KGIX—Las Vegas, N. M.
 KGJF—Little Rock, Ark.
 KGKB—Brownwood, Tex.
 KGKL—San Angelo, Tex.
 KGKO—Wichita Falls, Tex.
 KGKX—Sandpoint, Idaho
 KGO—Oakland, Calif.
 KGRC—San Antonio, Tex.
 KGRS—Amarillo, Tex.
 KGU—Honolulu, T. H.
 KGW—Portland, Ore.
 KGY—Lacey, Wash.
 KHJ—Los Angeles, Calif.
 KHQ—Spokane, Wash.
 KICK—Red Oak, Ia.
 KID—Idaho Falls, Idaho
 KIDO—Boise, Idaho

Call Town

KIT—Yakima, Wash.
 KJBS—San Francisco, Calif.
 KJIR—Seattle, Wash.
 KLCN—Blytheville, Ark.
 KLO—Ogden, Utah
 KLRA—Little Rock, Ark.
 KLS—Oakland, Calif.
 KLX—Oakland, Calif.
 KLZ—Dupont, Colo.
 KMA—Shenandoah, Ia.
 KMBK—Independence, Mo.
 KMED—Medford, Ore.
 KMIC—Inglewood, Calif.
 KMJ—Fresno, Calif.
 KMMJ—Clay Center, Neb.
 KMO—Tacoma, Wash.
 KMOX—St. Louis, Mo.
 KMTR—Hollywood, Calif.
 KNX—Hollywood, Calif.
 KOA—Denver, Colo.
 KOAC—Corvallis, Ore.
 KOB—State College, N. M.
 KOCW—Chickasha, Okla.
 KOH—Council Bluffs, Ia.
 KOIN—Portland, Ore.
 KOI—Seattle, Wash.
 KOMO—Seattle, Wash.
 KOOS—Marshfield, Ore.
 KORE—Eugene, Ore.
 KOY—Phoenix, Ariz.
 KPCB—Seattle, Wash.
 KPJM—Prescott, Ariz.
 KPLA—Los Angeles, Calif.
 KPO—San Francisco, Calif.
 KPOE—Denver, Colo.
 KPPC—Pasadena, Calif.
 KPQ—Seattle, Calif.
 KPRC—Houston, Tex.
 KPSS—Pasadena, Calif.
 KPWF—Westminster, Calif.
 KQW—Pittsburgh, Pa.
 KQW—San Jose, Calif.
 KRE—Berkeley, Calif.
 KRGV—Hartington, Tex.
 KRLO—Dallas, Tex.
 KRMD—Shreveport, La.
 KRSC—Seattle, Wash.
 KSAK—Manhattan, Kans.
 KSCJ—Sioux City, Ia.
 KSD—St. Louis, Mo.
 KSEI—Pocatello, Idaho
 KSL—Salt Lake City, Utah
 KSMR—Santa Maria, Calif.
 KSO—Clarinda, Ia.
 KSOO—Sioux Falls, S. D.
 KSTP—St. Paul, Minn.
 KTAH—Oakland, Calif.
 KTAH—San Antonio, Tex.
 KTAT—Ft. Worth, Tex.
 KTBI—Los Angeles, Calif.
 KTBR—Portland, Ore.
 KTBS—Shreveport, La.
 KTHS—Hot Springs, Ark.
 KTM—Santa Monica, Calif.

Call Town
 K TNT—Muscatine, Ia.
 K TSA—San Antonio, Tex.
 K TSI—Shreveport, La.
 K TUE—Houston, Tex.
 K TW—Seattle, Wash.
 K UJ—Longview, Wash.
 K UOA—Fayetteville, Ark.
 K UOM—Missoula, Mont.
 K USD—Vermillion, S. D.
 K UT—Austin, Tex.
 K VI—Tacoma, Wash.
 K VI—Seattle, Wash.
 K VO—Tucson, Ariz.
 K VO—Tulsa, Okla.
 K VOS—Bellingham, Wash.
 K WBS—Portland, Ore.
 K WCR—Cedar Rapids, Ia.
 K WEA—Shreveport, La.
 K WG—Stockton, Calif.
 K WJJ—Portland, Ore.
 K WK—St. Louis, Mo.
 K WKC—Kansas City, Mo.
 K WKH—Kenonwood, La.
 K WLC—Decorah, Ia.
 K WSC—Pullman, Wash.
 K WTC—Santa Ana, Calif.
 K WWG—Brownsville, Tex.
 K WYO—Laramie, Wyo.
 K XA—Seattle, Wash.
 K XI—Portland, Ore.
 K XO—El Centro, Calif.
 K XRO—Aberdeen, Wash.
 K YA—San Francisco, Calif.
 K YW—Chicago, Ill.
 K YWA—Chicago, Ill.
 K ZM—Hayward, Calif.
 WAAE—Chicago, Ill.
 WAAM—Newark, N. J.
 WAAT—Jersey, City, N. J.
 WAAW—Omaha, Neb.
 WABC—New York City
 WABI—Bangor, Me.
 WABO—Rochester, N. Y.
 WABZ—New Orleans, La.
 WADC—Akron, Ohio
 WAFD—Detroit, Mich.
 WAGM—Royal Oak, Mich.
 WAU—Columbus, Ohio
 WAPI—Birmingham, Ala.
 WASH—Grand Rapids, Mich.
 WBAC—Harrisburg, Pa.
 WBAL—Baltimore, Md.
 WBAP—Fort Worth, Tex.
 WBAY—Nashville, Tenn.
 WBAN—Wilkes-Barre, Pa.
 WBBC—Brooklyn, N. Y.
 WBHL—Richmond, Va.
 WBHM—Chicago, Ill.
 WBHR—Rossville, N. Y.
 WBBY—Charleston, S. C.
 WBBZ—Ponca City, Okla.
 WBCM—Bay City, Mich.
 WBCN—Chicago, Ill.
 WBNS—Boston, Mass.
 WBMS—Fort Lee, Ne J.
 WBNY—New York, N. Y.
 WBOQ—New York, N. Y.
 WBOV—Terre Haute, Ind.
 WBRC—Birmingham, Ala.
 WBRE—Wilkes Barre, Pa.
 WBRL—Tilton, N. H.
 WBSO—Wellesley Hills, Ms.
 WBT—Charlotte, N. C.
 WBZ—Springfield, Mass.
 WBZA—Boston, Mass.
 WCAC—Storrs, Conn.

Call Town
 WCAD—Canton, N. Y.
 WCAE—Pittsburgh, Pa.
 WCAH—Columbus, Ohio
 WCAJ—Lincoln, Neb.
 WCAI—Northfield, Minn.
 WCAM—Camden, N. J.
 WCAO—Baltimore, Md.
 WCAP—Ashbury Park, N. J.
 WCAT—Rapid City, S. D.
 WCAU—Philadelphia, Pa.
 WCAZ—Carthage, Ill.
 WCHA—Allentown, Pa.
 WCHD—Zion, Pa.
 WCHM—Baltimore, Md.
 WCHS—Springfield, Ill.
 WCCO—Minneapolis, Minn.
 WCDA—New York, N. Y.
 WCFI—Chicago, Ill.
 WCGU—Coney Island, N. Y.
 WCKY—Covington, Ky.
 WCLB—Long Beach, N. Y.
 WCLD—Kenosha, Wis.
 WCLS—Joliet, Ill.
 WCLA—Culver, Ind.
 WCOA—Pensacola, Fla.
 WCOB—Columbus, Miss.
 WCOH—Yonkers, N. Y.
 WCRW—Chicago, Ill.
 WCSI—Portland, Me.
 WCSO—Springfield, Ohio
 WDAE—Tampa Fla.
 WDAF—Kansas City, Mo.
 WDAQ—Amarillo, Tex.
 WDAH—El Paso, Tex.
 WDAY—Fargo, N. D.
 WDBB—Roanoke, Va.
 WDBO—Orlando, Fla.
 WDBI—Wilmington, Del.
 WDGY—Minneapolis, Minn.
 WDOO—Chattanooga, Tenn.
 WDRB—New Haven, Conn.
 WDSU—New Orleans, La.
 WDWI—Providence, R. I.
 WDWZ—Tuscola, Ill.
 WDEA—New York, N. Y.
 WEAF—Ithaca, N. Y.
 WEAN—Providence, R. I.
 WEAO—Columbus, Ohio
 WEAR—Cleveland, Ohio
 WEBC—Duluth, Minn.
 WEBE—Cambridge, Ohio
 WEBG—Harrisburg, Ill.
 WEBR—Buffalo, N. Y.
 WEBW—Beloit, Wis.
 WEDC—Chicago, Ill.
 WEDH—Erie, Pa.
 WEEH—Boston, Mass.
 WEHS—Evanston, Ill.
 WEIC—Philadelphia, Pa.
 WEMC—Berrien Spgs., Mich.
 WENR—Chicago, Ill.
 WEPS—Gloucester, Mass.
 WEVD—New York, N. Y.
 WEW—St. Louis, Mo.
 WFAA—Dallas, Texas
 WFAN—Philadelphia, Pa.
 WFBC—Knoxville, Tenn.
 WFBG—Altoona, Pa.
 WFRJ—Collegeville, Minn.
 WFRS—Syracuse, N. Y.
 WFBM—Indianapolis, Ind.
 WFBT—Baltimore, Md.
 WFDL—Flint, Mich.
 WFI—Philadelphia, Pa.
 WFIW—Hopkinsville, Ky.
 WFCJ—Akron, Ohio

Call Town
 WFKD—Philadelphia, Pa.
 WFLA—Clearwater, Fla.
 WGAI—Lancaster, Pa.
 WGBB—Freeport, N. Y.
 WGBE—Memphis, Tenn.
 WGBF—Evansville, Ind.
 WGBI—Scranton, Pa.
 WGBS—New York, N. Y.
 WGCM—Gulfport, Miss.
 WGCP—Newark, N. J.
 WGES—Chicago, Ill.
 WGH—Newport News, Va.
 WGHF—Detroit, Mich.
 WGL—Fort Wayne, Ind.
 WGRS—Minneapolis, Minn.
 WGN—Chicago, Ill.
 WGR—Buffalo, N. Y.
 WGST—Atlanta, Ga.
 WGY—Schenectady, N. Y.
 WHA—Madison, Wis.
 WHAD—Milwaukee, Wis.
 WHAM—Rochester, N. Y.
 WHAP—New York, N. Y.
 WHAS—Louisville, Ky.
 WHAZ—Troy, N. Y.
 WHB—Kansas City, Mo.
 WHBC—Canton, Ohio
 WHBD—Bellefontaine, Ohio
 WHBF—Rock Island, Ill.
 WHBI—Sheboygan, Wis.
 WHBP—Johnston, Pa.
 WHBQ—Memphis, Tenn.
 WHBU—Anderson, Ind.
 WHBY—West De Pere, Wis.
 WHDF—Calumet, Mich.
 WHDH—Gloucester, Mass.
 WHDI—Minneapolis, Minn.
 WHDL—Tupper Lake, N. Y.
 WHDC—Rochester, N. Y.
 WHFC—Cicero, Ill.
 WHIS—Bluefield, W. Va.
 WHK—Cleveland, Ohio
 WHN—New York, N. Y.
 WHO—Des Moines, Iowa
 WHF—Harrisburg, Pa.
 WIAS—Ottumwa, Ia.
 WIBA—Madison, Wis.
 WIBG—Elkins Park, Pa.
 WIBM—Jackson, Mich.
 WIBO—Chicago, Ill.
 WIBR—Steubenville, Ohio
 WIBS—Elizabeth, N. J.
 WIBU—Poynette, Wis.
 WIBW—Topeka, Kans.
 WIBX—Utica, N. Y.
 WICC—Bridgeport, Conn.
 WIL—St. Louis, Mo.
 WILI—Urbana, Ill.
 WILM—Wilmington, Del.
 WINR—Bay Shore, N. Y.
 WIOD—Miami Beach, Fla.
 WIP—Philadelphia, Pa.
 WISN—Milwaukee, Wis.
 WJAD—Waco, Tex.
 WJAG—Norfolk, Neb.
 WJAK—Marion, Ind.
 WJAR—Providence, R. I.
 WJAS—Pittsburgh, Pa.
 WJAX—Jacksonville, Fla.
 WJAY—Cleveland, Ohio
 WJAZ—Chicago, Ill.
 WJBC—LaSalle, Ill.
 WJBI—Red Bank, N. J.
 WJBK—Ypsilanti, Mich.
 WJBL—Decatur, Ill.
 WJBO—New Orleans, La.

Call Town

WJBT—Chicago, Ill.
 WJBO—New Orleans, La.
 WJBT—Chicago, Ill.
 WJBU—Lewisburg, Pa.
 WJBW—New Orleans, La.
 WJBY—Gadsden, Ala.
 WJDW—Bemory, Va.
 WJDX—Jackson, Miss.
 WJDZ—Winston-Salem, N. C.
 WJJD—Mooseheart, Ill.
 WJKS—Gary, Ind.
 WJR—Detroit, Mich.
 WJR—Detroit, Mich.
 WJSV—Mt. Vern. Hills, Va.
 WJW—Mansfield, Ohio
 WJZ—New York, N. Y.
 WKAQ—San Juan, P. R.
 WKAR—E. Lansing, Mich.
 WKAV—Laconia, N. H.
 WKBB—Joliet, Ill.
 WKBC—Birmingham, Ala.
 WKBE—Webster, Mass.
 WKBF—Indianapolis, Ind.
 WKBH—La Crosse, Wis.
 WKBI—Chicago, Ill.
 WKBN—Youngston, Ohio
 WKBO—Jersey City, N. J.
 WKBP—Battle Creek, Mich.
 WKBQ—New York, N. Y.
 WKBS—Galesburg, Ill.
 WKBV—Brookville, Ind.
 WKBW—Buffalo, N. Y.
 WKBZ—Ludington, Mich.
 WKEN—Buffalo, N. Y.
 WKJC—Lancaster, Pa.
 WKRC—Cincinnati, Ohio
 WKY—Oklahoma City, Ok.
 WLAC—Nashville, Tenn.
 WLAP—Louisville, Ky.
 WLBI—Minneapolis, Minn.
 WLBC—Muncie, Ind.
 WLBF—Kansas City, Kans.
 WLBG—Petersburg, Va.
 WLBI—Stevens Point, Wis.
 WLBU—Oil City, Pa.
 WLBN—Long Is. City, N. Y.
 WLBB—Bangor, Maine
 WLBI—Ithaca, N. Y.
 WLEX—Lexington, Mass.
 WLEY—Lexington, Mass.
 WLBI—Chicago, Ill.
 WLIT—Philadelphia, Pa.
 WLOE—Boston, Mass.
 WLS—Chicago, Ill.
 WLSI—Providence, R. I.
 WLTH—Brooklyn, N. Y.
 WLW—Cincinnati, Ohio
 WLWI—New York, N. Y.
 WMAF—Cazenovia, N. Y.
 WMAF—Dartmouth, Mass.
 WMAK—Buffalo, N. Y.
 WMAK—Washington, D. C.
 WMAN—Columbus, Ohio
 WMAQ—Chicago, Ill.
 WMAY—St. Louis, Mo.
 WWRL—Woodside, N. Y.

Call Town

WWVA—Wheeling, W. Va.
 WMAZ—Macon, Ga.
 WMBA—Newport, R. I.
 WMBD—Detroit, Mich.
 WMBD—Peoria Heights, Ill.
 WQBZ—Weirton, W. Va.
 WMBG—Richmond, Va.
 WMBH—Joplin, Mo.
 WMBI—Chicago, Ill.
 WMBJ—Pittsburgh, Pa.
 WMBI—Lakeland, Fla.
 WMBQ—Auburn, N. Y.
 WMBQ—Brooklyn, N. Y.
 WMBR—Tampa, Fla.
 WMC—Memphis, Tenn.
 WMCA—New York, N. Y.
 WMES—Boston, Mass.
 WMMN—Fairmont, W. Va.
 WMPG—Lapeer, Mich.
 WMRJ—Jamaica, N. Y.
 WMSG—New York, N. Y.
 WMT—Waterloo, Ia.
 WNAC—Boston, Mass.
 WNAD—Norman, Okla.
 WNAT—Philadelphia, Pa.
 WNAX—Yankton, S. D.
 WNBH—Binghampton, N. Y.
 WNBH—New Bedford, Mass.
 WNBK—Knoxville, Tenn.
 WNBO—Washington, Pa.
 WNBK—Memphis, Tenn.
 WNBW—Carbondale, Pa.
 WNBX—Springfield, Vt.
 WNBZ—Saranac Lake, N. Y.
 WNJ—Newark, N. J.
 WNOX—Knoxville, Tenn.
 WNRG—Greensboro, N. C.
 WNYC—New York, N. Y.
 WOAI—San Antonio, Tex.
 WOAN—Lawrenceburg, Tenn.
 WOAX—Trenton, N. J.
 WOBT—Union City, Tenn.
 WOBU—Charleston, W. Va.
 WOC—Davenport, Ia.
 WOCL—Jamestown, N. Y.
 WODA—Paterson, N. J.
 WOI—Ames, Ia.
 WOKO—Poughkeepsie, N. Y.
 WOI—Washington, D. C.
 WOMT—Manitowoc, Wis.
 WOPI—Bristol, Tenn.
 WOOD—Grand Rapids, Mich.
 WOQ—Kansas City, Mo.
 WOR—Newark, N. J.
 WORD—Chicago, Ill.
 WOS—Jefferson City, Mo.
 WOY—New York, N. Y.
 WOW—Omaha, Neb.
 WOWO—Ft. Wayne, Ind.
 WPAP—New York, N. Y.
 WPAW—Pawtucket, R. I.
 WPCC—Chicago, Ill.
 WPCB—New York, N. Y.
 WPG—Atlantic City, N. J.
 WPOE—Patchogue, N. Y.
 WPOR—Norfolk, Va.

Call Town

WPRC—Harrisburg, Pa.
 WPSC—State College, Pa.
 WPSW—Philadelphia, Pa.
 WPTF—Raleigh, N. C.
 WQAM—Miami, Fla.
 WQAN—Scranton, Pa.
 WQAO—New York, N. Y.
 WQBC—Utica, Miss.
 WRAF—La Porte, Ind.
 WRAC—Erie, Pa.
 WRBW—Reading, Pa.
 WRAX—Philadelphia, Pa.
 WRBC—Valparaiso, Ind.
 WRBI—Tifton, Va.
 WRBJ—Hattiesburg, Miss.
 WRBI—Columbus, Ga.
 WRBQ—Greenville, Miss.
 WRBT—Wilmington, N. C.
 WRBU—Gaston, N. C.
 WRC—Washington, D. C.
 WREC—Whitehaven, Tenn.
 WREN—Lawrence, Kans.
 WRHM—Minneapolis, Minn.
 WRJN—Racine, Wis.
 WRK—Hamilton, Ohio
 WRNY—New York, N. Y.
 WRR—Dallas, Tex.
 WRUF—Gainesville, Fla.
 WRVA—Richmond, Va.
 WSAI—Cincinnati, Ohio
 WSAJ—Grove City, Pa.
 WSAN—Allentown, Pa.
 WSAR—Fall River, Mass.
 WSAZ—Huntington, W. Va.
 WSB—Atlanta, Ga.
 WSHC—Chicago, Ill.
 WSBT—South Bend, Ind.
 WSDA—Brooklyn, N. Y.
 WSGH—Brooklyn, N. Y.
 WSGP—Savannah, Ga.
 WSIX—Springfield, Tenn.
 WSM—Nashville, Tenn.
 WSMB—New Orleans, La.
 WSMK—Dayton, Ohio
 WSOA—Forest Park, Ill.
 WSPD—Toledo, Ohio
 WSSH—Boston, Mass.
 WSUI—Iowa City, Ia.
 WSUN—Clearwater, Fla.
 WSVS—Buffalo, N. Y.
 WSYR—Syracuse, N. Y.
 WTAD—Quincy, Ill.
 WTAG—Worcester, Mass.
 WTAM—Cleveland, Ohio
 WTAQ—Bau Claire, Wis.
 WTAR—Norfolk, Va.
 WTAW—College Stn, Tex.
 WTAX—Streator, Ill.
 WTBO—Cumberland, Md.
 WTFI—Toccoa, Ga.
 WTIC—Hartford, Ga.
 WTMJ—Milwaukee, Wis.
 WWAE—Hammond, Ind.
 WWJ—Detroit, Mich.
 WWL—New Orleans, La.
 WWNC—Asheville, N. C.

The New
POWELL
Screen-Grid Radio

\$79⁵⁰
less tubes

\$96⁵⁰
[Complete]

EXTREMELY SELECTIVE

~

**Two Screen Grid Tubes,
Power Detector, 245-Output
Beautiful Console Cabinet
Positively no A-C Hum
At Your Nearest Dealer**

~

Powell Manufacturing Co.

LOS ANGELES
6121 S. Western Ave.
YOrk 9552

SEATTLE
909 Pike St.

SAN FRANCISCO
1270 Mission Street
Underhill 3314

"MUSIC BOX RADIOS"

Truthfully Advertised

\$ **89** ⁵⁰

COMPLETE !

*With Full Dynamic
Speaker*

6 & 7 TUBES

A. C. HUMLESS CHASSIS!

Filter Network Circuit — No Frying or Crackling
Extreme Selectivity — Remarkable Distance
Single Dial — Solid Mahogany Cabinets!

AND TONE! — Regardless of Price or Size

The MUSIC BOX Compares with America's Finest

Hear it in Your Own Home FREE!

57 DEALERS IN SOUTHERN CALIFORNIA

4 Models at

\$59.50, \$69.50, \$79.50 and \$89.50

Zaney-Gill Corporation

5914-16-18 SO. WESTERN

PLasant 3147

LOS ANGELES

