

The M Street Journal

Radio's Journal of Record

304 Park Ave. S., 7th Floor, New York, NY 10010 PHONE (212) 473-4668 FAX (212) 473-4626

EIA SOLVES AGE OLD CHICKEN AND EGG PROBLEM WITH GIFT OF ENCODERS. Here's a story with a lot of subtext: By the time you read this, the Electronic Industries Association will have announced a national program to equip 500 FM stations in the top 25 markets with Radio Broadcast Data Systems (RBDS) encoders over the next year. Philadelphia has been chosen as the test site for the campaign which will give stations RBDS software, hardware, and training at no cost. 240 stations already carry RBDS info. In addition, Arbitron has announced that it will add its research services to CouponRadio's RBDS technology test in the Miami market during the first quarter of '96. The six month test is being done in conjunction with Interep Radio Store.

GOLDILOCKS AND THE THREE URBANS. One's so hard, one is too old and one may just right, that's what WBLS, New York is hoping. The 1993 move by WBLS from an almost urban AC approach to young-end urban still has a lot of industryites shaking their heads, but WBLS now says it will head back toward urban AC, following the departure of PD Quincy McCoy. WBLS got a lot of attention recently for attacking--although not by name--urban AC rival WRKS (Kiss 98.7) as "the plantation station" in an apparent reference to its non-ethnic ownership. The alleged plantation station is, this week, teaming up with famed New York moderate, the Rev. Al Sharpton for a march on City Hall to commemorate the King assassination.

FORMAT CHANGES & UPDATES

(# change accompanies new ownership) (// simulcast)

		<u>formerly</u>	<u>becomes</u>
AZ Glendale (Phoenix)	KKFR-92.3	CHR	dance CHR
CT New London	WNLC-1510	# news, talk	WW1 - adult standards
(WNLC & soft AC WTYD are now a duopoly with full service			WICH & country WCTY)
FL Cocoa (Titusville)	WMYM-1350	news, talk	WW1 - adult standards
Immokalee (Naples)	WGCQ-92.1	silent	WW1 - adult standards
GA Helen	WHEL-105.1	WW1 - standards	WW1 - oldies
Zebulon	WEKS-92.5	new	MJR - CW "The Bear"
NE Bennington (Omaha)	KRRK-93.3	rock	new rock
NY New York	WBLS-107.5	urban	urban AC
South Bristol (Roch.)	WRQI-95.1	classic rock	new rock "The Nerve"
NC Burgaw (Wilmington)	WVBS-1470*	# silent	religion // WOTJ
Clayton (Raleigh)	WHPY-1590	# silent	religion // WOTJ
OH Cincinnati	WUBE-1230	sports	adds WW1 - Imus
OK Altus	KKVO-90.9*	religion	MGS - c. Christian
PA Clarion	WCCR-92.7	hot AC	WW1 - adult contemp.
Kane	WPSB-90.1*	new	variety // WPSU
Pittsburgh	WEPP-1080	classic country	WDSY, country // FM
Williamsport	WPGY-107.9	silent	WW1 - country
(WPGY is in an SMA with WHTO, not a duopoly as previously reported.)			
SC Bluffton (Savannah)	WLOW-106.9	adult standards	adds WW1 - standards
Columbia	WISW-1320	oldies	all news
(Local news will be from WIS-TV)			
TN Bartlett (Memphis)	WRRW-92.9	classic hits	WMFS, rock
Fairview	WPFD-850	reported silent	remains country
Milan (Jackson)	WYNU-92.3	rock CHR	adds WW1 Adult - rock
(Adult Rock n' Roll will air overnights)			
TX Denison	KDVE-FM-101.7	soft AC	adds JSN - soft AC
Paris	KGDD-1250	oldies	adds JSN - oldies
WA Silverdale (Bremerton)	KITZ-1400	# silent	country
Wilson Creek(Moses Lk)	KVYF-103.3	new	Spanish "Viva 103"

April 5, 1995 Vol. 12 No. 14

ROBERT UNMACHT and PAT McCRUMMEN, Publishers
BILL DAVIES, Associate Editor

Copyright 1995 M Street Corporation. All rights reserved. No portion of The M Street Journal may be copied, faxed, retransmitted, or reproduced in any form without the written permission of the publishers. All efforts are made to keep the data as accurate as possible. However, errors and omissions are unavoidable. Formats of stations listed reflect the analysis and groupings of M Street Corp. and may differ from the station's opinion or interpretation. ISSN 1052-7109

The M Street Journal is published weekly except the last week of December. Subscriptions are available for \$119 per year, which includes a copy of the annual M Street Radio Directory. Subscriptions are also available for \$36 per quarter. The directory is available separately for \$44.00 (price includes shipping).

NEW STATIONS: APPLICATIONS

(* non-commercial station) (& reapplication)
(+ competes with existing application)

AL 105.7+	Addison	6000 w, 328 ft	New Life Broadcasting
IA 96.1+	Madrid	6000 w, 328 ft	Boone-Story Broadcasting, Inc.
ME 89.3*	Freeport	200w(h)8000w(v)394ft	Downeast Christian Comms.
TX 91.9*	Yuma	25000 w, 213 ft	World Radio Network, Inc.

NEW STATIONS: GRANTS

FL 88.5*	Florida City	21000 w (v), 121 ft	S. Florida Educational Bcstrs.
LA 107.9	Clayton	6000 w, 328 ft	Clayton FM Partnership

TRANSLATORS/BOOSTERS/SYNCHRONOUS XMTR: APPLICATIONS

AL new-101.7*	Anniston	10 w, WYFK	Bible Broadcasting Net.
new-98.1*	Gadsden	10 w, WYFD	Bible Broadcasting Net.
new-91.1*	Troy	38 w, WAFR	American Family Assn.
CA new-103.3	Watsonville	53000 w (h), KRAY	KCTY AM & KRAY FM, Inc.
KY new-92.5*	Hillview	10 w (v), WJYL	Lou Smith Ministries
new-95.3	Richmond	38 w, WJMM-FM	Paragon Advertising
NE new-93.5	Sidney	40 w, KCFI	Friends of Christian Radio
NV new-102.7	Carson City	240 w (h), KGLE-FM	Tri-Valley Bcstg. Corp.
NC new-101.3*	Salisbury	38 w, WBFJ-FM	Triad Family Network
OR new-104.7	Ashland	250 w (v), KROG	DRB Medford License, Inc.
new-96.1	Grants Pass	250 w (v), KBOY-FM	DRB Medford License, Inc.
new-104.7	Grants Pass	250 w (v), KROG	DRB Medford License, Inc.
TN new-89.7*	Hohenwald	27 w, WAFR	American Family Assn.
UT new-91.3*	Provo	10 w, KCJH	Stockton Christian Life
VA new-103.5*	Hampton	10 w (v), WJYJ	Educational Media Corp.
new-91.3*	Jarrat	55 w (v), WJYJ	Educational Media Corp.
new-93.5*	Leesburg	10 w (v), WJYJ	Educational Media Corp.
new-102.9*	Manassas	120 w (v), WJYJ	Educational Media Corp.
new-88.1*	Standardsville	55 w (v), WJYJ	Educational Media Corp.
new-105.9*	Williamsburg	10 w (v), WJYJ	Educational Media Corp.
WI new-97.1*	Madison	13 w, WPFM	Family Educ. Bcstg.

TRANSLATORS/BOOSTERS/SYNCHRONOUS XMTR: GRANTS

CA KSOL-FM1-98.9	Pleasanton	186 w (v), KSOL	Crescent Comms. of Calif.
------------------	------------	-----------------	---------------------------

CONSTRUCTION PERMIT ACTIVITY

CA KBHR(CP)-93.3	Big Bear City	requests extension of time (4th)
KCFM(CP)-105.3	Chester	license to cover for new station
KOJJ-100.5	East Porterville	granted extension of time to increase to 6800 w
KIOQ(CP)-1030	Folsom	granted extension of time
KQEX-100.5	Rohnerville	requests extension of time to move to 100.3 MHz, change to 800 w, 1686 ft, change xmtr loc., change city of lic. to Fortuna, CA
KSJI(CP)-1120	San Martin	granted extension of time
KYHT(CP)-105.3	Yermo	granted extension of time (2nd)
CO KQXI-1550	Arvada	requests extension of time to change xmtr location to 39-39-45 104-59-58
FL WKSG(CP)-89.5*	Cedar Creek	requests extension of time
WVNM(CP)-102.7	Cedar Key	requests extension of time (3rd)
WOMX-FM-105.1	Orlando	increases to 1597 ft, changes xmtr loc. to 28-34-51 81-04-32
HI KAUI(CP)-103.3	Kekaha	requests extension of time (4th)
IA KOOO(CP)-102.3	Onawa	granted extension of time (6th)
MN KBRF-1250	Fergus Falls	requests extension of time to change to DA-2
NE KNCY-FM-105.5	Auburn	increases to 6000 w, 328 ft
KOIL-1180	Bellevue	granted extension of time to increase to 25000 w days, DA-2
NH WAEF(CP)-96.5	Bedford	requests replacement of expired CP
WMLY(CP)-104.5	Conway	requests replacement of expired CP (6th)
NY WXHD-90.1*	Mount Hope	license to cover for new station
WINS-1010	New York	granted extension of time to change to DA-2
WGNV-1200	Newburgh	granted extension of time to move to 1220 kHz, decrease to 5000 w days, 24 w nights, DA-2
WJKE-101.3	Stillwater	changes to 2900 w, 469 ft, changes xmtr location to 43-00-42 23-41-01
NC WWBG(CP)-1470	Greensboro	granted reinstatement of expired CP

CONSTRUCTION PERMIT ACTIVITY (cont'd)

OH WJZA(CP)-107.5	Columbus	requests replacement of expired CP
OR KQAK-105.7	Bend	granted replacement of expired CP to increase to 40000 w
KZTU(CP)-650	Junction City	granted reinstatement of expired CP to move to 660 KHz, increase to 550 w nights, DA-N
OR KCRF-96.7	Lincoln City	requests extension of time (7th) to increase to 30000 w, 626 ft
PA WMRE-1190	Hughesville	granted reinstatement of expired CP to move to 1200 kHz, increase to 10000 w days, 250 w nights, DA-2
WRFH(CP)-88.7*	Marietta	requests replacement of expired CP (5th)
TX KELG-1440	Elgin	requests reinstatement of expired CP to increase to 800 w days, DA-2, change city of license to Manor, TX
UT KQMB(CP)-102.7	Midvale	requests extension of time (7th)
VT WXXX-95.3	South Burlington	granted extension of time to move to 95.5 MHz, increase to 25000 w, 281 ft
VA WCQR(CP)-890	Fairlawn	granted extension of time
WVLS(CP)-89.7*	Monterey	requests extension of time
WA KWFJ(CP)-89.7*	Roy	granted extension of time

FACILITIES/PARAMETERS: APPLICATIONS

AL WWGA(CP)-107.7	Georgiana	(& reapplication) [docket number] increase to 44500 w, 535 ft, change xmtr location, class C2
AZ KMEQ-93.7	Wickenburg	move to 94.1 C3, change to 6400 w, 646 ft, [93-71]
AR KDDK-100.3	Jacksonville	change to 85000 w, 1053 ft, chg xmtr loc.
KTPA-1370	Prescott	direct measurement of antenna power
CA KORG-1190	Anaheim	increase to 20000 w days, make changes in daytime DA pattern
CT WNEZ-910	New Britain	operate xmtr by remote control
FL (CP)-105.5	St. Augustine Beach	one step application to change to class C3
GA WDEC-FM-94.3	Americus	modify CP to move to 94.7 MHz to change xmtr location
IL WOYS-100.9	Apalachicola	one step application to move to 100.5 C3
WLBK-1360	De Kalb	direct measurement of antenna power
WGNR-88.9*	Monee	increase to 81 ft, change xmtr location
KY WHIR-1230	Danville	direct measurement of antenna power
LA KVDP-89.1*	Dry Prong	increase to 4500 w
ME WMDR-1340	Augusta	direct measurement of antenna power
MD WILC-900	Laurel	operate xmtr by remote control
MI WFGE-94.3	Mackinaw City	one step application to move to 94.5 C3
MN KCRB-FM-88.5*	Bemidji	decrease to 974 ft
MS WDTL-FM-92.7	Cleveland	increase to 6000 w, 328 ft, chg xmtr loc.
MO KZPD-104.1	Ash Grove	one step application to change to class C3
(CP)-104.3	Kennett	change xmtr location
NY WYNY-103.5	Lake Success	install auxiliary antenna
WTRY-980	Troy	direct measurement of antenna power
NC WNCU(CP)-90.7*	Durham	change xmtr location and antenna support. structure height
ND KFJM-1370*	Grand Forks	direct measurement of antenna power
OK KIRC-105.9	Seminole	modify CP to move to 105.5 MHz to change to 4400 w, 383 ft, change xmtr location
PA WRLP-103.1	Russell	change to 1450 w, 469 ft, change antenna supporting structure height
WEZX-106.9	Scranton	change to 1500 w, 617 ft
TX KFXJ(CP)-92.5	Abilene	modify CP to change to 44000 w, 525 ft, change xmtr location
UT KPCW-91.9*	Park City	move to 88.5 MHz, change to 85 w, 2122 ft, change xmtr loc. and antenna supporting structure height
KXRK-96.1	Provo	one step application to move to 96.3 MHz
WI WROE-94.3	Neenah	modify CP to change to 13000 w, 459 ft

FACILITIES/PARAMETERS: GRANTS

AL WHOD-FM-94.5	Jackson	increase to 37500 w, 567 ft, class C2, [91-303]
CA KAAT-103.1	Oakhurst	increase to 500 w, 1122 ft, change xmtr location to 37-25-10 119-44-42
IL WGGH-1150	Marion	direct measurement of antenna power

FACILITIES/PARAMETERS: GRANTS (cont'd)

IA KSUI-91.7*	Iowa City	replace DA with ND antenna
KOOO(CP)-102.3	Onawa	increase to 643 ft
MD WMET-1150	Gaithersburg	operate xmtr by remote control
MS WDTL-FM-92.7	Cleveland	move to 92.9 C2, increase to 50000 w, 492 ft, change xmtr location to 33-40-25 90-40-25
NC WAHP(CP)-102.5	Southern Pines	increase to 3400 w, 436 ft, change xmtr location to 35-09-04 79-28-40, change antenna support. structure height
ND KFGO-FM-101.9	Fargo	one step application to change to class C1 (as amended), increase to 1000 ft
OK KEOK-101.7	Tahlequah	increase to 6600 w, 295 ft (as modified) class C3, change xmtr location to 35-53-43 94-57-12
TN WNUF-FM-94.1	Paris	increase to 10500 w, class C3
TX KWTR-1530	Georgetown	operate xmtr by remote control
KVPA-101.1	Port Isabel	increase to 4000 w
KSTV-FM-105.7	Stephenville	change to 90300 w, 2056 ft, class C, change xmtr location and change city of license to Decatur, TX

PROPOSED STATION TRANSFERS

(314 asset sale, 315 transfer of control, 316 reorganization)		
AK KMBQ-99.7	Wasilla	315 from KMBQ Corp. (Alaska Bcst. Comms.) to Gary E. Buell, Sr.
AR KVOM-800/101.7	Morrilton	314 from Morrilton Broadcasting Company, Inc. to KVOM, Inc.
CA KIST-1340/ KMGQ-106.3	Santa Barbara/ Goleta	316 from Channel Islands Bcstg. (Prodanovich) to Channel Islands Bcstg. (Nicassio)
KWNK-670	Simi Valley	314 from Valley Radio 670 to Sports Radio Broadcasting, Inc.
FL WFTL-1400	Fort Lauderdale	314 from Tri-Talk Radio, L.C. to Paxson Communications Corp.
WNZE-820	Largo	316 from Paxson Broadcasting of Tampa, L.P. to Paxson Tampa License L.P.
WWZN-540	Pine Hills	316 from Paxson Broadcasting of Orlando, LP to Paxson Orlando License, L.P.
WQOL-103.7	Vero Beach	314 from Pleasure Coast Media, Inc. to CRB Broadcasting of Florida, Inc.
ID KLVJ-1240/99.1	Mountain Home	314 from William Konopnicki to Valley Mountain Broadcasting, Inc.
IN WASK-FM-98.7	Battle Ground	316 from Schurz Communications, Inc. to WASK, Inc.
IA KBIZ-1240/ KTWA-92.7	Ottumwa	315 from Gillbro Comms. LP (E. Elley, trustee) to Gillbro Comms. LP (G. Gillett, Jr.)
KICD-1240/107.7	Spencer	316 from Iowa Great Lakes Bcstg Co (Sanders) to Iowa Great Lakes Bcstg (Sanders trust)
KIGL-104.9		
KS KSOK-1280/ KWKS-107.9	Arkansas City/ Winfield	314 from Cowley County Communications to Great Scott Communications, Inc.
MS WCHJ-1470/ WBKN-92.1	Brookhaven	314 from Bogue Chitto Communication Co. to Ole Brook Broadcasting, Inc.
MO KLWT-1230/ KCLQ-107.9	Lebanon	316 from Lebanon Bcstg. (Country Music Comm) to Lebanon Bcstg. (Pearson Bcstg of Lebanon)
NE KOLT-1320	Scottsbluff	316 from Tracy Corp. V to Tracy Broadcast Corporation
NC WFMC-730	Goldsboro	314 from WEG Broadcasting Corporation to New Age Communications, Inc.
WTAB-1370	Tabor City	314 from Great American Media, Ltd. Inc. to WTAB, Inc.
RI WICE-550	Pawtucket	314 from Transnet Stations, Inc. to Back Bay Broadcasters, Inc.
SC WBSC-1550	Bennettsville	314 from Big Bend Broadcasting Corp. to D-Mitch Broadcasting, Inc.
WLOW-106.9	Bluffton	314 from DHA Broadcasting, Inc. to New Adventure Communications, Inc.
TX KBUD-99.7/ KARX-95.7	Amarillo/ Claude	314 from KARX Broadcasting Corp. of Texas to West Jewell Management
VA WSOJ-100.3	Petersburg	316 from FM-100, Inc. (W. Belle/L. Jones) to FM-100, Inc. (L. Jones)

PROPOSED STATION TRANSFERS (cont'd)

WA KITI-1420/	Chehalis/	315 in Premier Broadcasters, Inc.
(CP)-95.1	Winlock	
KEDO-1400/	Longview	314 from Longview Broadcasting Co.
KLYK-105.5		to Rodney J. Etherton
WY KPGM-106.9	Casper	314 from Mongo Broadcast Group, Inc.
		to Mount Rushmore Broadcasting, Inc.

DISMISSED STATION TRANSFERS

IN WEXI-102.9	Huntington (D)	314 from ICBC Corporation
		to Pathfinder Communications Corporation

FM ALLOCATIONS: GRANTED AMENDMENTS

CO new	Estes Park	add 102.1 A, window opens May 12, closes June 12
MN new	Pequot Lakes	add 100.1 A, window opens May 12, closes June 12
KIGL	Spencer	to 104.9 C3 from A
KXAX	St. James	to 101.5 A from 104.9 A

FM ALLOCATIONS: DISMISSED AMENDMENTS

MN new	Collegetown (Denied)	add 99.9 A non-commercial
--------	----------------------	---------------------------

WASHINGTON THIS WEEK

The Commission has approved the Broadcasting Partners/Evergreen Media merger, which gives the new entity six stations in the Chicago market--four of them FM's. The Commission has granted a temporary twelve month waiver to allow the new company to divest itself of two of the FM's. Evergreen has pledged to the FCC that it will take "affirmative steps" to seek out a qualified minority buyer for at least one of the FM stations. The six stations involved are urban AC WVAZ, Oak Park; urban combo WEJM (AM), Chicago and WEJM-FM, Lansing, IL; rocker WRGX, and talk-rock WLUP-FM, both Chicago; and sports outlet WMVP, Chicago.

The Commission granted the application for assignment of the license of KNAL (AM), Victoria, TX, from Hombres Enterprises, Inc. to Withers Broadcasting Company of Texas, waiving the one-to-a-market rule under the "failed station" standard. Withers is the licensee of UHF television station KAVU, Victoria. Under the "failed station" standard, the Commission accords favorable review to one-to-a-market waiver requests involving stations that have not been operated for a substantial period of time (usually around four months) or are involved in bankruptcy proceedings.

Jones Eastern of the Outer Banks, Inc.'s WRSF, Columbia, NC, got hit with a \$12,000 fine for violation of the Commission's main studio rules. Jones Eastern had asked the FCC to relocate its studios three miles outside the station's principal contour to the site of its "auxiliary" studio in Nags Head, NC. The Mass Media Bureau denied the request, but later received a complaint alleging that WRSF was operating primarily from the Nags Head studio. After investigating the complaint, the Bureau found the staffing of the Columbia main studio inadequate because the station had failed to maintain a meaningful management and staff presence there. The Commission later denied review of the Bureau's action. In November, 1992, the Commission assessed a \$20,000 forfeiture for the violation. Jones Eastern asked the Commission to reconsider the forfeiture. The Commission upheld its earlier finding but reduced the fine to \$12,000 because the forfeiture schedule used to assess the fine was set aside last year by a U.S. Court of Appeals.

The Commission has appointed Saul T. Shapiro to Assistant Bureau Chief for Technology Policy in the Mass Media Bureau. He'll be responsible for coordination and development of policy for the Advanced Television proceedings currently under consideration by the Commission.

The FCC's weekly listing of job vacancy announcements is now available on the Internet and Fax-On-Demand. The Internet docs are available from the FCC server (ftp.fcc.gov) as \pub\Public Notices\Miscellaneous\pnmc9999 (.txt for unformatted text of .wp for Word Perfect). The fax-on-demand system number is (202) 418-2830. When you are prompted for a document number, enter 4906 for the listing. Enter the vacancy announcement number for copies of specific announcements, omitting dashes and letters. For more info, call Jordan Brinn at (202) 418-0507.

WASHINGTON THIS WEEK (cont'd)

If you're looking for something to take the wobble out of that kitchen table, the House Commerce Committee has published an updated edition of the Communications Act of 1934 and related statutes. The 518-page book called Compilation of Selected Acts Within the Jurisdiction of the Committee on Commerce: Communications Law is available for \$19.00 from the Superintendent of Documents, Government Printing Office, Washington, DC 20402. For credit card orders, call (202) 512-1800. The publication stock number is 052-070-06992-9.

ELSEWHERE

There's a duopoly changing hands in Charlotte as Jeff Trumper's Trumper Communications has agreed to sell country WTDR, Statesville, NC and soft AC WEZC, Hickory, NC to Steven Hicks' SFX Broadcasting for \$23.5 million cash. The LMA is effective immediately. Not to be left with only its stations in Lexington, KY, Trumper is buying sports outlet KISN (AM) & hot AC KISN-FM, Salt Lake City for an estimated \$5 million from Sun Mountain Broadcasting.

Crescent Communications is picking up the Commonwealth Broadcasting stations in Albuquerque and Las Vegas. The \$26.5 million deal gives them a controlling interest in AC KMZQ, Henderson, NV (Las Vegas) and sports outlet KRZY and country KRST, Albuquerque. Crescent owns churban KYLD, San Francisco and just bought urban AC KSOL and churban simulcast KYLZ, San Jose from Viacom. Commonwealth is currently programming country KOLT-FM, Santa Fe under an LMA.

"Leapfrog Radio," a company formed by Taylor Communications' Group Vice President Paul Levesque, is planning to buy Taylor's three stations in the Cape Cod, MA market. The approximately \$2 million price tag includes gold-based AC WCOD, Hyannis and new rock combo WUNX, Harwich Port and WUNZ, Falmouth. Taylor is in the process of merging his other properties in Orlando and West Palm Beach with OmniAmerica.

Noble Broadcasting is buying its LMA partner in Southern California for \$3.65 million. To give them better coverage in the L.A. area, Noble's XETRA, San Diego, has been simulcasting its sports programming on Valley Radio's KWNK, Simi Valley for a couple of years.

Interep maintains its aggressive pace this week by purchasing radio's only classical music rep firm, Concert Music Network, Inc., the parent company of Concert Music Broadcast Sales and Concert Music Network. Terms weren't disclosed. Interep now has ten separate shops.

After a six month hiatus, KDEO-FM, Honolulu returns to its freeform, listener input-driven "Radio Free Hawaii" format under an unusual LMA. Quality and Warlock Records boss Adam Levy, the son of late Roulette Records magnate Morris Levy, has LMA'ed the station from Loew Broadcasting which took KDEO-FM to classic rock format last November. In keeping with the "democratic" nature of the format, rehired staffers will decide amongst themselves who gets which shift.

KDEO's move last fall was, at least, explained by the presence of new competition. KPOI had shifted from mainstream to modern rock--the music that had been the bulk of KPOI's franchise. Lowell Weicker, Jr., says he's still negotiating with a "bunch of networks" who might be interested in fielding the former Connecticut governor and U.S. senator as the liberal answer to Rush Limbaugh, but his original intended network, New Haven-based CRN International, has pulled out of plans for a show in what Weicker describes as "a mutual parting of the ways."

M STREET BAZAAR. . .PEOPLE, PRODUCTS, AND PROGRAMMING

While WW1 pulls back on R&B programming, the ABC Radio Networks forge ahead. A day before the anniversary of the King assassination, ABC unveiled targeted newscasts for its 24-hour urban formats, The Touch (urban AC) and Urban Gold. Pam Gibson, last the overnigher for Urban Gold, will be news anchor for both formats which had previously used the news from ABC's other 24-hour formats. And ABC's Bob Kingsley has signed a five-year contract to remain as the producer-host of "American Country Countdown with Bob Kingsley. Kingsley will also produce and host the two-minute "Bob Kingsley with America's Music Makers" and three specials, including a new Christmas special.

M STREET BAZAAR (cont'd)

Another recently displaced host, Walt Love, whose countdown show fell victim to the closing of Westwood One's urban division, expects to have a new home shortly, according to the publication R&B Airplay Monitor. Meanwhile, Jamie Foster-Brown, whose "Sister To Sister" reports were WW1's other urban offering, is currently producing and distributing the show herself.

And then we wrote: "All Things Considered" host Linda Wertheimer will publish "Listening To America: Twenty-Five Years in the Life of a Nation as Heard on National Public Radio" through Houghton Mifflin on May 29. The show will revisit NPR's coverage of the major news stories of the last 25 years. Also, "ATC" will air a three day report on college life in conjunction with affiliate WUNC Chapel Hill, N.C., on April 11-13.

Great Empire Broadcasting, an early player in the Branson, Mo., boom through its nearby KTTS (AM) & FM Springfield, MO, is now offering a two hour nightly show called "76 Country Blvd.," originating from Branson's Grand Palace Theatre, which is co-owned by Kenny Rogers. KTTS personality Tom McLeod--who has also worked on three other Great Empire Branson projects--will host. The show will also be carried by affiliates of the new Branson Music Network. For info, call Don Paul at (417) 865-6614.

All the good sports are on...: CHOG (AM 640) Toronto has picked up play-by-play broadcasts for the Toronto Argonauts. And KLSX Los Angeles has become the new flagship station for the Los Angeles Raiders Radio Network.

Are you sure the classic rock boom is over? Radio Today Entertainment has expanded its weekly "Flashback" series from two to four hours. "Flashback" airs on 200 stations a week including recent additions WNEW-FM New York and WLUP Chicago. If you're interested, contact Radio Today at (212) 581-3962.

B&J Telecard, which has already done telecard projects with WPLJ New York, the National Academy of Recording Arts and Sciences, and Critique Records, branches into country with a Vince Gill Telecard project in conjunction with WWQM (Q106) Madison, Wisc., which handed out the cards to promote an upcoming Gill show. For info, call Lisa Galena at (212) 686-5983.

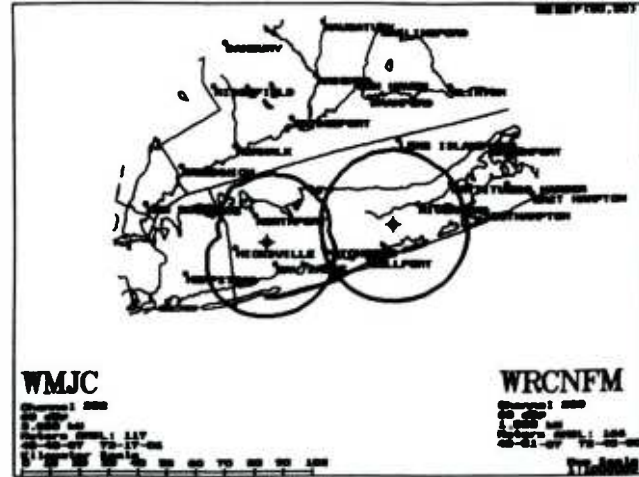
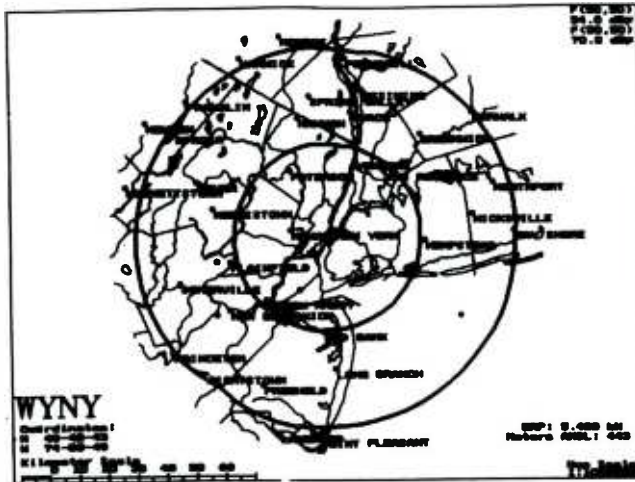
The One On One Sports Radio Network moves p.m. driver Larry Cotlar to mornings. It also taps WMVP, Chicago's Jay Mariotti & Mark Gentzkow to middays and KJR Seattle's Kevin Wall to afternoons.

The Houston-based "CompuTalk" program has been added to the Texas State Network and has officially debuted its "CompuTalk Geek-Free Global Network" home page on the Internet. Users will be able to hear shows live on the Internet as well as download previous shows and commercials and get free software from sponsors. The address is <http://www.neosoft.com/computalk>. For more info, call Tom King at (713) 968-5805.

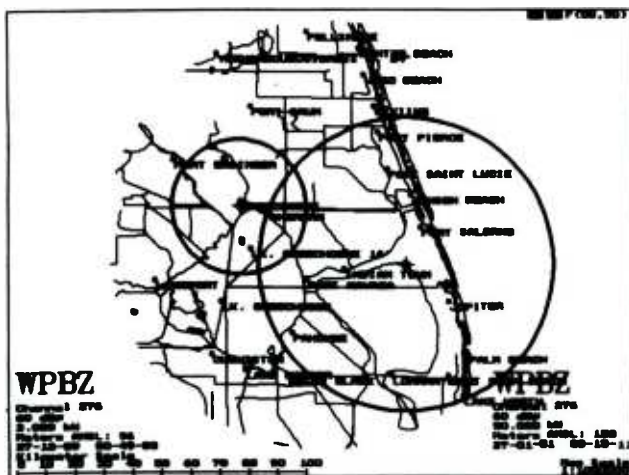
* * * *

STATION COVERAGE

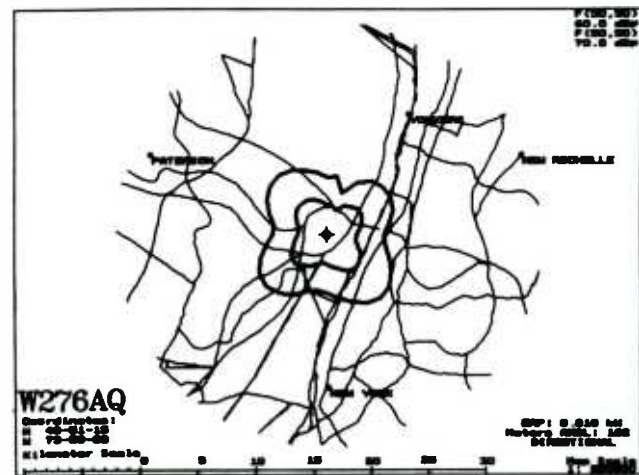
DUOPOLIES



FACILITIES UPGRADES



TRANSLATORS



Aerial view without the cost of the helicopter.

M Street Map Service

(featuring RadioSoft's FMR mapping software)

Let us show you your:

Site Location

County/City Coverage

Station vs. Competition

Construction Permits/Applications vs. Licensed Facilities

Same Day Fax Service Available

Now Available in Color

(800) 248-4242

(212) 473-4668

The M Street Journal

Radio's Journal of Record

304 Park Ave. S., 7th Floor, New York, NY 10010 PHONE (212) 473-4668 FAX (212) 473-4626

PARK DEAL MOVES FORWARD. . . The Commission has approved the sale of the Park Communications empire to Park Acquisitions, Inc., but Park must sell some of its radio stations in order for the deal to go through. The \$700 plus million deal includes a 12-month waiver of the one-to-a-market rule to operate television and radio stations that overlap in the Greenville, NC; Chattanooga, TN; and Richmond, VA markets. Therefore, Park must sell WTVR-AM & FM, Richmond; WNCT-AM & FM, Greenville, NC; and WDEF-AM & FM, Chattanooga.

WHEN OVERNIGHT WON'T DO. . . Infinity Broadcasting and VirteX have joined forces to form Musicam Express, a "new programming and information superhighway distribution service for the radio industry." According to the release, the new service uses technology that assures DAB compatibility and will allow users to instantly deliver CD-quality audio and information to radio stations via satellite and computer network file servers.

FORMAT CHANGES & UPDATES (# change accompanies new ownership) (// simulcast)

		<u>formerly</u>	<u>becomes</u>
AL Dothan	WGZS(CP)-700	new	to be southern gospel
Montgomery	WRWO-96.1	WLNE, soft AC	classic rock "Arrow"
AK Soldotna	KSLD-1140	oldies	reported silent
AZ Wickenburg	KBSZ-93.7	easy listening	new age
	(New age, not smooth jazz, Musical Starstreams host Forest is PD)		
AR Bentonville (Fayett.)	KOLZ-98.3	hot AC	CHR
CA Los Angeles	KZLA-FM-93.9	country	adds After Midnight
Ventura	KHAY-100.7	country	adds After Midnight
DE Dover	WRTX-91.7*	new	jazz // WRTI
FL Hialeah (Miami)	WACC-830	WRFM, Spanish	Spanish news & sports
Jacksonville	WCRJ-1530	country	talk
GA Ringgold (Chattanooga)	WMPZ-93.7	new	urban AC
	(WMPZ will use SMN's The Touch from 7pm to 12 mid.)		
Trenton (Chattanooga)	WBDX-102.7	contemp. Christian	adds MGS - c. Christian
IL Decatur	WDZ-1050	news, talk	adds Stan Major
IN Brownsburg	WQFE-101.9	oldies	adds JSN - oldies
Elwood	WLHN-101.7	oldies	adds SMN - oldies
Tell City	WTCJ-1230	AC, talk	talk
IA Anamosa	KLEH-1290	country	reported silent
KS Great Bend	KVGB-FM-104.3	country	JSN - soft AC
Great Bend	KVGB-1590	oldies, talk	JSN - soft AC & talk
Osage City (Topeka)	KANS-FM-92.9	# KZOC, country	JSN - oldies
Topeka (Topeka)	KWIC-99.3	SMN - oldies	SMN - adult contemp.
LA Alexandria	KZMZ-96.9	hot AC	classic rock
Berwick	KBZE-105.9	SMN - urban AC	adds ABC - Tom Joyner
New Orleans	WTIX-690	talk	adds Stan Major
	(Stan also adds WASO 730 in the same market)		
West Monroe	KMBS-1310	news, talk	adds Stan Major
MI Hudson	WMXE-102.5	new	SMN - adult contemp.
MS Meridian	WTUX-102.1	adult contemporary	WW1 - 70's oldies
Moss Point (Mobile)	WZBA-104.9	oldies	adds SMN - oldies
MO California (Jeff City)	KREL-1420	silent	SMN Real - country
Cameron	KNOZ-100.1	new	SMN - country
MT Billings	KBKO-FM-103.7	KOHZ, soft AC	country "Bob 103.7"
	(M Note: "Bob" seems to be a lot harder than "Mix" to find calls for)		
Great Falls	KEIN-1310	SMN - country	SMN - oldies
Ronan	KQRK-92.3	adult contemporary	adds JSN - soft AC
West Yellowstone	KWYS-920	country	to be WW1 - oldies

April 12, 1995 Vol. 12 No. 15

ROBERT UNMACHT and PAT McCRUMMEN, Publishers

BILL DAVIES, Associate Editor BLAKE FITCH, Administrative Assistant

Copyright 1995 M Street Corporation. All rights reserved. No portion of The M Street Journal may be copied, faxed, retransmitted, or reproduced in any form without the written permission of the publishers. All efforts are made to keep the data as accurate as possible. However, errors and omissions are unavoidable. Formats of stations listed reflect the analysis and groupings of M Street Corp. and may differ from the station's opinion or interpretation. ISSN 1052-7109

The M Street Journal is published weekly except the last week of December. Subscriptions are available for \$119 per year, which includes a copy of the annual M Street Radio Directory. Subscriptions are also available for \$36 per quarter. The directory is available separately for \$44.00 (price includes shipping).

FORMAT CHANGES & UPDATES (cont'd)

NE Grand Island	KMMJ-750	country	news, talk
NV Laughlin (Las Vegas)	KLSQ-870	silent	regional Mexican
NH Rochester	WSRI-96.7	adult alternative	adds WW1 - Imus
Rochester (Portsmouth)	WZNN-930	news	WW1 - adult standards
(WZNN is local & simulcast 6-11am with standards sister WMYF Exeter)			
NJ Atlantic City	WUSS-1490	urban	oldies, talk // WIFI
(WUSS enters into an LMA with WIFI, Florence NJ)			
Florence (Trenton)	WIFI-1460	talk	oldies, talk
Washington Township	WNJC-1360	Spanish brokered	adds oldies, talk
(WNJC now simulcasts WIFI, Florence NJ 12m-9am and 3-6pm)			
NY Elmira	WELM-1410	oldies	Prime - sports
(WELM remains oldies in morning drive)			
Little Falls (Utica)	WLFH-1230	SMN - country	SMN Real - country
Stillwater (Albany)	WJKE-101.3	adult contemporary	adds SMN - AC
NC Warrenton	WARR-1520	# silent	b. gospel, R&B oldies
OR Gresham (Portland)	KMUZ-1230	KKBK, classical	soft AC, classical
(KMUZ is soft AC by day and classical by night)			
PA Ambridge (Pittsburgh)	WMBA-1460	news, talk, sports	adds Stan Major
SC Columbia	WCOS-1400	country	WW1/CNN Headline - news
TX Houston	KENR-1070	ethnic brokered	adds oldies // WIFI
(KENR now simulcasts WIFI Florence, NJ from 12m-6am)			
Raymondville (McAllen)	KSOX-1240	oldies // FM	sports
San Antonio	KZDC-1250	KZEP, cls rock//FM	rock "KZDC Rocks"
VA Covington	WIQO-FM-100.9	SMN - AC	SMN - country
Covington	WKEY-1340	SMN - country	SMN - oldies
Pulaski	WPSK-FM-107.1	country	adds After Midnight
WV Charleston	WVSR-1240	CHR // FM	Prime - sports
WI Port Washington (Mil.)	WGLB-1560	easy listening	soft AC & smooth jazz
Port Washington (Mil.)	WGLB-FM-100.1	easy listening	soft AC & smooth jazz

NEW STATIONS: APPLICATIONS (* non-commercial station) (& reapplication)
(+ competes with existing application)

AL 105.7	Addison	2500 w, 505 ft	Eugene G. Hutchens
CA 91.1*	Redding	1800 w, 1466 ft	Christian Arts & Education Inc.
OH 93.9+	Van Wert	6000 w, 328 ft	D. Robert Eddy
TX 93.7	Uvalde	2900 w, 292 ft	US Ninety West Communications

Returned/Dismissed Applications

WA 88.9*	Friday Harbor (R)	Juan Educational Broadcasters
WI 106.7	Allouez (D)	Odon Communications Group I L.P.

NEW STATIONS: GRANTS

AR 99.9	Monticello	3000 w, 328 ft	P.Q. Gardner
KS 95.7	Sterling	6000 w, 328 ft	Ad Astra per Aspera Broadcast.
TN 88.1*	Jackson	750 w, 134 ft	American Family Association
VT 89.9*	Barre	940 w, 590 ft	Christian Ministries, Inc.

CONSTRUCTION PERMIT ACTIVITY

AZ KRIM-104.3	Payson	granted extension of time to change to 91000 w, 1164 ft
AR KEGT(CP)-103.5	Lake Village	requests extension of time (3rd)
CA KSPY(CP)-100.3	Quincy	requests extension of time (5th)
KRQR-97.3	San Francisco	decreases to 1014 ft, changes xmtr loc. to 37-51-03 22-29-51
KWQH(CP)-97.1	San Luis Obispo	granted extension of time (3rd)
DE WJTI(CP)-103.5	Bethany Beach	denied extension of time, cancelled CP, deleted call letters
WAFL-97.7	Milford	granted extension of time to increase to 6000 w, DA
FL WPSM-91.1*	Fort Walton Beach	requests extension of time to increase to 5000 w, 177 ft
WLVO(CP)-106.1	Live Oak	granted extension of time (4th)
GA WRFG-89.3*	Atlanta	increases to 100000 w, 279 ft, DA
IL WDDD-810	Johnston City	requests reinstatement of expired CP to increase to 300 w nights
WYYS-106.1	Streator	license to cover for new station
IN WOEI(CP)-88.9*	Union City	granted replacement of expired CP
IA KYAT(CP)-105.9	Keokuk	requests extension of time (2nd)
LA KTOC-FM-104.9	Jonesboro	granted extension of time (2nd) to increase to 8000 w

CONSTRUCTION PERMIT ACTIVITY (cont'd)

MA WFUB(CP)-97.3	Orange	granted extension of time (4th)
MI WAFU(CP)-103.7	Hartford	granted extension of time
WBTZ-100.9	Pinconning	increases to 2600 w
MS WYCG(CP)-105.5	Water Valley	granted extension of time
MO KLZE-95.3	Owensville	dismissed replacement of expired CP to increase to 50000 w
NJ WYRS-90.7*	Manahawkin	license to cover for new station
WMID-FM-99.3	Pleasantville	changes to 3000 w, 328 ft
NM KYRK(CP)-100.9	Eunice	cancelled CP, deleted call letters
NY WGNV-1200	Newburgh	granted extension of time to increase to 10000 w days, 2500 w nights, DA-2
(This corrects last week's listing.)		
WRLI(CP)FM-89.9*	Southampton	granted extension of time
NC WOGR-1540	Charlotte	requests extension of time to decrease to 2500 w days, DA-D
ND WLGX(CP)-106.7	Carolina Beach	requests replacement of expired CP (2nd)
KFNW-FM-97.9*	Fargo	granted extension of time to increase to 1000 ft
OK KXOO(CP)-94.3	Elk City	requests extension of time
PA WWBE-98.3	Mifflinburg	granted extension of time to change to 1400 w, 482 ft
WKVE-97.5	St. Mary's	changes to 19500 w, 800 ft
SC WRHA(CP)-105.1	Johnsonville	granted extension of time (2nd)
WJYQ-105.5	Moncks Corner	granted extension of time (3rd) to move to 105.3 MHz, increase to 20000 w
VI WDCM(CP)-92.3	Cruz Bay	granted extension of time (7th)
WA KAYO-FM-99.3	Aberdeen	granted extension of time to increase to 39000 w, 1417 ft
KAZZ-107.1	Deer Park	granted replacement of expired CP to change to 8320 w, 561 ft
KLYN-106.5	Lynden	granted extension of time to change to 68000 w, 2332 ft
KING-FM-98.1	Seattle	granted extension of time (4th) to change to 100000 w, 1046 ft
KZIZ-1560	Sumner	adds night service with 1000 w, DA-N, 3300 w critical hours

FACILITIES/PARAMETERS: APPLICATIONS

		(& reapplication) [docket number]
AZ KWFH-90.1*	Parker	decrease to 460 w, -184 ft, chg xmtr loc.
AR KDEZ-100.3	Jonesboro	modify CP to move to 100.5 MHz to change to 26000 w, 407 ft
FL WXJC-91.9*	Crystal River	change to 7900 w, 285 ft
WPSM-91.1*	Fort Walton Beach	modify CP to decrease to 79 ft
WLVF-FM-90.3*	Haines City	modify CP to change to 1200 w, 308 ft
WEDR-99.1	Miami	install auxiliary antenna system
GA WDEC-FM-94.3	Americus	modify CP to move to 94.7 MHz to change xmtr location
IN WTLC-1310	Indianapolis	direct measurement of antenna power
WSJD(CP)-100.5	Princeton	increase to 6000 w, change xmtr location
IA KDCR-88.5*	Sioux Center	increase to 495 ft, change xmtr location
KS KULY-1420	Ulysses	operate xmtr by remote control
MI WHMI-FM-93.5	Howell	change to 2600 w, 354 ft
MS WOHT-95.3	Drew	increase to 6000 w, 328 ft, chg xmtr loc.
NC WRKB-1460	Kannapolis	direct measurement of antenna power
OH WING-1410	Dayton	direct measurement of antenna power
PR WIOB-97.5	Mayaguez	increase to 50000 w
TN WKWT-104.9	Union City	change to 6000 w, 292 ft
VA WXEZ-94.1	Yorktown	change to 40000 w, 531 ft, chg xmtr loc.
WI WFFF-90.5*	Sturgeon Bay	increase to 100000 w

Returned/Dismissed Applications

MA WGFP-940	Webster (D)	direct measurement of antenna power
MS WZKS(CP)-104.1	Union (D)	change to 18000 w, 535 ft, chg xmtr loc.
NJ WYGG-88.1	Asbury Park (R)	move main studio outside 70 dBu contour

FACILITIES/PARAMETERS: GRANTS

CA KERN-1410	Bakersfield	direct measurement of antenna power
DE WAFL-97.7	Milford	increase to 6000 w, DA
FL WXCX-95.3	Homosassa Springs	increase to 6000 w, 328 ft
WNFK-105.5	Perry	change to 1600 w, 197 ft, change xmtr location to 30-06-27 83-34-00

FACILITIES/PARAMETERS: GRANTS (cont'd)

FL WLWX-95.5	Silver Springs	increase to 6000 w
IN WGBD-95.7	Attica	change to 3100 w, 433 ft, change xmtr location to 40-23-02 87-07-55
LA WYLD-FM-98.5	New Orleans	increase to 902 ft, class C1, change xmtr location to 29-58-41 89-56-26
ME WEBB-98.5	Waterville	one step application to change to class C1, increase to 63000 w
MN WJON-1240	St. Cloud	direct measurement of antenna power
MO KMRF-1510	Marshfield	increase to 1000 w days, change main studio location, change xmtr location to 37-19-09 92-57-43
NY WOKN-99.5	Southport	increase to 2650 w, 489 ft
NC WQNS-104.9	Waynesville	change to 245 w, 1581 ft
OH WSLN-98.7	Delaware	move to 98.7 MHz, change to 19 w (h), 43 ft, change xmtr location to 40-17-47 83-03-59
OR KDBX-107.5	Banks	one step application to change to class C3, increase to 6300 w, 1332 ft, chg. xmtr location to 45-31-22 122-45-07
KZTU(CP)-650	Junction City	move to 660 kHz, increase to 550 w nights, DA-N, change city of license to Eugene, OR, change xmtr location to 44-06-03 123-03-06
KGRV-700	Winston	direct measurement of antenna power
SC WCCP-FM-104.9	Clemson	increase to 6000 w
WJMX-970	Florence	increase to 10000 w days
TX KGAP-98.5	Clarksville	one step application to change to class C3, increase to 50000 w, 308 ft
WI WMMM-FM-105.5	Verona	change to 2000 w, 573 ft, change xmtr location to 42-57-32 89-29-25

CALL LETTER CHANGES (# applied for by new owners)

AL WLNE-FM-96.1	Montgomery becomes	WRWO	3-24-95	"Arrow"
WMHX-92.5	Trinity	# WWXQ	4-1-95	
AZ new-90.9*	Bisbee	KWRB	3-24-95	
KMEO-93.7	Wickenburg	KBSZ	3-24-95	
CA KJAZ-FM-92.7	Alameda	# KZSF	3-20-95	
KRGO-1220	Fowler	KQEQ	4-1-95	
KTBG(CP)-93.1	Paso Robles	KNCR	3-30-95	
KJQY-103.7	San Diego	KMKX	3-24-95	
KKHI-1510	San Rafael	KNOB	4-1-95	"Nob Hill"
CT WYSR-104.1	Waterbury	WMRQ	3-29-95	
FL WBSB-96.1	Dade City	WGUL-FM	4-1-95	
WRFM-830	Hialeah	WACC	4-3-95	
WAIB-99.9	Lafayette	WWFO	3-19-95	"The Fox"
WUMX-103.1	Tallahassee	# WAIB	3-19-95	"B-103"
GA WVEV-1420*	Decatur	WATB	3-24-95	
WMLD-1160	East Point	WERD	4-1-95	(Heritage Atlanta R&B Calls)
IL WNCY-1370	Lincoln	# WPRC	3-20-95	
WDND-105.5	Wilmington	# WYKT	4-3-95	"Cat"
IA new-104.3	Eldon	KACG	3-31-95	
KS KZOC-92.9	Osage City	# KANS-FM	4-1-95	"Kansas"
KZTO-95.7	Ottawa	# KCHZ	(requested)	
KY WAPC-99.1	Edmonton	WKNK	4-3-95	
WTTL-FM-106.9	Madisonville	WZEZ	4-1-95	
LA WNOE-1060	New Orleans	# WLNO	3-17-95	
MI WKGH-92.3	Allegan	WNTX	4-1-95	
MN KLPR(CP)-94.7	Springfield	KNSG	3-20-95	
MO KZMO-1420	California	KREL	3-24-95	
MT KOHZ-103.7	Billings	KBKO-FM	4-1-95	"Bob"
NE KYNN-101.9	Lincoln	KGDE	4-1-95	
NV KNDE-100.9	Sparks	KQNV	4-1-95	"Q-101"
NH WWEM-96.7	Rochester	WSRI	4-3-95	
NJ WJUX-88.7*	Franklin Lakes	WNJW	3-24-95	
WSKQ-620	Newark	WXLX	4-3-95	
NY WBUF-92.9	Buffalo	WSJZ	4-1-95	
WQIX-100.9	Horseheads	# WPGI	3-30-95	"Piggy 101"
WIQT-820	Horseheads	WQIX	3-30-95	
WRVW-93.5	Hudson	# WTHK	3-20-95	
NC WJOS-1540	Elkin	# WIFM	3-19-95	
WQDW-1230	Kinston	WLNR	4-3-95	
ND new-710	Bismarck	KXMR	3-31-95	

CALL LETTER CHANGES (cont'd)

OR KKBK-1230	Gresham	KMUZ	4-1-95	
PA WXXW-1470	Allentown	WKAP	3-27-95	
WECP-1080	Pittsburgh	WDSY	3-21-95	"Daisy 1080"
SC WCIG-107.1	Mullins	# WWSK	(requested)	
WNMX-106.3	Newberry	WDXZ	3-30-95	"Dixie"
SD KDDX(CP)-95.9	Belle Fourche	KZZI	4-1-95	
TN new-91.7*	Murfreesboro	WAKN	3-31-95	
new-88.3*	Murfreesboro	WAKF	3-31-95	
TX KAKS-FM-107.9	Canyon	KZRK-FM	3-30-95	"Z-Rock"
KZEP-1250	San Antonio	KZDC	4-1-95	
KDIL-106.7	Terrell Hills	# KCJZ	3-20-95	"Jazz"
VT new-91.7*	Bolton	WCMK	3-24-95	
VA WBVS(CP)-670	Claremont	# WVNS	3-28-95	
WDCK-96.5	Williamsburg	WLEE-FM	4-1-95	("Lee" as in Robert E. Lee)
WA new-93.9	Ephrata	KTBI-FM	3-24-95	
KINF-1090	Seattle	# KNWX	3-31-95	"News"

PROPOSED STATION TRANSFERS

(314 asset sale, 315 transfer of control, 316 reorganization)

AR KOUA-96.3	Mena	314	from Wendell P. Harlan to Max H. Pearson
KWDA(CP)-104.5	White Hall	315	from Bayou Broadcasting, Inc. (McGee) to Bayou Broadcasting, Inc. (Ramsey)
CA KAGA(CP)-105.9	Santa Ynez	314	from Karin H. Wood to Grape Radio
CO KQMT-101.5	Eagle	314	from Mountain High Communications, Inc. to Broadcast II, L.L.C.
CT WIHS-104.9*	Middletown	315	from Connecticut Radio Fell. (Old Board) to Connecticut Radio Fell. (New Board)
FL WACC-830	Hialeah	316	from InterAmerican Broadcasting, Inc. to New InterAmerican Broadcasting, Inc.
WVOJ-970	Jacksonville	314	from WBOM, Inc. to Spanish Broadcasting Media Corp.
IL WIBV-1260	Belleville	315	form Belleville Bcstg. Co. (Embry exec.) to Belleville Bcstg. Co. (Embry Trust)
WOPA-1200	Chicago	314	from CID Broadcasting, Inc. to WOPA-AM License Corp.
IN WWVR-105.5	West Terre Haute	316	from United Broadcasting Co., Inc. to United Broadcasting Co., Inc.
IA KSOM(CP)-96.5	Audubon	316	from Stephen O. Meredith to Meredith Communications, L.C.
KQTP-102.9	St. Marys	316	from Shawnee Bcstg. Corp. (CVC Capital) to Shawnee Bcstg. Corp. (Transtel Comms.)
KFH-1330/ KQAM-1410/ KXLK-105.3	Wichita Hayesville	315	from Pourtales Radio (Freedonia Bcstg.) to Pourtales Radio (Triathalon Bcstg. Co.)
KFH-1330/ KQAM-1410/ KXLK-105.3	Wichita Hayesville	316	from Pourtales Radio Part. to KZKX-FM, Inc.
MA WUNZ-101.1/ WUNX-93.5	Falmouth Harwich Port/	314	from J.J. Taylor Companies, Inc. to Leapfrog Radio Partnership
WCOD-106.1	Hyannis		
MI WAFU(CP)-103.7	Hartford	314	from Rural Initiatives for Shelter & Ed. to Dunes Broadcasting, Inc.
MS WONG-1150	Canton	314	from John H. Pembroke to William Truly, Jr. dba Old Communication
MO KTRX-93.5	Tarkio	314	from Kanza, Inc. to CSN International
NE KTGL-92.9/ KZKX-96.9	Beatrice/ Seward	315	from Pourtales Radio (Freedonia Bcstg.) to Pourtales Radio (Triathalon Bcstg. Co.)
KTGL-92.9 KZKX-96.9	Beatrice/ Seward	316	from Pourtales Radio Part. to KZKX-FM, Inc.
KNBQ-97.7	Nebraska City	316	from Nebraska Bcstg. Corp. (CVC Capital) to Nebraska Bcstg. Corp. (Transtel Comms.)
KNBQ-97.7	Nebraska City	314	from Nebraska Broadcasting Corp. to Henry Broadcasting Corp.
NV KMTW-1340	Las Vegas	315	from Max Radio License, Inc. to Brandon 21st Century, Ltd.
NH WLNH-FM-98.3/ WBHG-101.5	Laconia/ Meredith	316	from WLNH Radio, Inc. (McQueen, et al) to WLNH Radio, Inc. (McLean)
NJ WZVU-107.1	Long Branch	316	in K & K Radio Broadcasting L.P.

PROPOSED STATION TRANSFERS (cont'd)

NC WEGG-710/	Rose Hill	314	from Dublin County Broadcasters to RMB Broadcasting, Inc.
WBSY-104.7			
OH WVKC-92.5	Toledo	316	from Noble Bcst. of Toledo (Noble Group) to Noble Bcst. of Toledo (Noble Holdings)
OR KGZH(CP)-98.7	Nyssa	316	from Robert M. Mason to Mason Broadcasting, Inc.
TN WWTN-99.7	Manchester	314	from John C. McLemore, trustee to WSM, Inc.
TX KAHT(CP)-105.7	Idalou	316	from Triumph Communications (Brownlow) to Triumph Communications (Ramsey)
WACO-1460/99.9	Waco	315	from SBF Comms. of TX (Fassler/Lebow) to SBF Comms. of TX (Ameridata Technologies)
VA WJQI-1600/	Chesapeake/	316	invol. from Sunshine Wireless (Berlanti)
WFOG-92.9/	Suffolk/		to Sunshine Wireless (Berlanti, trustee)
WJQI-FM-92.9	Virginia Beach		
WA KSBN-1230	Spokane	315	from TCC Broadcasting Company to KSBN Radio, Inc.
WV WRRF-1130/95.3	Rainelle	314	from R.B. Company, Inc. to Faith Broadcasting Corp.

DISMISSED STATION TRANSFERS

AZ KONZ-106.3	Arizona City (D)	315	from Arizona City Bcstg. Corp (Taslitz) to Arizona City Bcstg. Corp (Saathoff)
KONZ-106.3	Arizona City (D)	316	from Arizona City Broadcasting Corp. to John Saathoff
DE WJTI(CP)-103.5	Bethany Beach (D)	314	from Jeffrey Scott to Great Scott Broadcasting
MT KHKR-FM-104.1	East Helena (D)	314	from Northwest Broadcasting, L.P. to Capital Investments, Inc.

WASHINGTON THIS WEEK

The Commission has put on hold plans to authorize new Emergency Alerting Equipment (EAS) because of several petitions that have surfaced asking for reconsideration of the technical standards for the equipment. There's no word yet on whether or not the hold will delay compliance dates with the new system for broadcasters.

The Commission has put together a videotape of an actual broadcast station inspection. The tape was produced as a public service by the Society of Broadcast Engineers Denver Chapter in partnership with the FCC Denver Field Office at a Denver television and radio station. The tape is available for presentations through Christopher Haskell at the Denver Field Office by calling (303) 969-6497.

The NAB's Radio TechCheck says the Commission has published new forms for determining RF compliance, as well as a booklet outlining the license renewal process. The booklet, entitled "License Renewal Forms and Instructions," provides fill-in-the-blank forms designed to help engineers determine if they need to file detailed information about how the station complies with the FCC's RF exposure guidelines. If you'd like more info, call the NAB's Sandra Schultz at (202) 429-5346 and ask for packet G-295.

ELSEWHERE

Computer users will have access to all kinds of radio programming via the Internet with the introduction of "RealAudio," a service from Seattle-based Progressive Networks. The system allows users to listen to network broadcasts at any time they choose, and only the portions they choose to listen to. A user purchases a special software program from Progressive to call up a menu of broadcasts they wish to listen to. The software queues up the broadcasts and plays them back over the computer's sound system without interfering with other system resources. ABC Radio and National Public Radio have already signed up to offer archived entertainment, news, and sports broadcasts. NPR will offer Morning Edition, All Things Considered, and Weekend Edition.

After five years, USA Digital Radio, the joint venture between Group W, CBS, and Gannett, has finished its testing and has chosen National Semiconductor to manufacture the chips needed for its system of in-band, on-channel (IBOC) digital audio broadcasting (DAB). The IC chips will be available soon.

WFMT, Chicago, which has been syndicating its classical format as the Beethoven Satellite Network for a number of years, is teaming up with San Francisco-based KJAZ Satellite Service to launch the KJAZ Satellite Network. The web will offer 24-hour-a-day mainstream jazz via satellite from brand new studios in Chicago. The marketing launch begins immediately to both public and commercial stations.

ELSEWHERE (cont'd)

It's been a really busy week at Arbitron. However, there is good news and bad news. The good news is that the company plans to "enrich" its sample frame in 51 markets by adding college or military group quarter populations to its pool of possible participants. Previously, sampling telephone exchanges from these type of households rarely happened. The move should help boost sampling in the younger male demos.

The bad news is that the company had to re-mail the Station Name Preview forms to everyone in the country because it used the wrong database file for its mailing. Arbitron wants you to know that the file used for diary processing is correct.

Arbitron has revised the 1996 Summer survey dates to move the "week-off" in its survey schedule from September to June. Normally, the company takes a week break between the Summer and Fall surveys. The move will allow the company to take the break "when it will do the most good for our quality-control--during the period of time we are processing the diaries from the 261-market Spring survey," Arbitron President Pierre Bouvard said in a press release. He went on to say he believes on-air jocks in continuously measured markets would prefer the time off in June rather than late September. The 1996 survey dates are:

Winter 1996	January 4 - March 27, 1996
Spring 1996	March 28 - June 19, 1996
Summer 1996	June 27 - September 18, 1996
Fall 1996	September 19 - December 11, 1996

Another Florida market leaps into Arbitron's Top 100 as the company announced it is combining the Ft. Myers and Naples-Marco Island markets. 122-ranked Ft. Myers has a 12+ pop. of 325,600. Naples-Marco Island is ranked #195 with 154,500 12+ people. The new market will be ranked #78 with a 12+ pop. of 480,100. Arbitron is also adding Jackson, TN, as a new market. Its rank is #255 with 67,700 12+ people. The two markets keeps the company's measured markets total at 261.

Arbitron has promoted three employees to management spots. Bob Michaels assumes the position of team leader, Radio Programming, Dallas. He was previously account executive, Radio Station Services. Dan Seely, also a Dallas account exec., is now southwestern manager, Radio Station Services, Dallas. Finally, Frank Stanitski, former manager of the Arbitron Radio Product Group, rejoins the company as eastern manager, Radio Station Services, New York.

CBS Radio President Nancy Widmann has been awarded the Southern California chapter of the American Women in Radio & Television's "Genii" award. The awards recognize women in their contributions toward improving the status of women in the broadcasting industry. The award Luncheon will be held Friday, April 28th at the Beverly Hilton Hotel. For info, call (310) 442-1073.

SW Networks is getting into the talk business by syndicating a three-hour weekly show by former New York Governor Mario Cuomo. The show, billed as "thought-talk," will debut this Summer covering "a wide array of political, social, and ethical topics."

SW has also signed Detroit-based Jacobs Media to help it develop its Modern Rock programming and services. SW plans to launch a modern rock/alternative format soon. Also, IQ Productions will be handling the television spot production for SW's "Smooth FM" jazz format.

Katz Media Group has rolled out its initial public offering of 5.5 million shares of common stock at \$16 per share. Of the proceeds from the sale, approximately \$75.8 million will be used to repay a portion of the financing of the acquisition, with the rest going for general corporate purposes and to reduce debt. This offering replaces a previously announced debt offering by Katz subsidiary Katz Capital Corporation.

On the heels of the EIA's announcement to equip 500 FM stations with RBDS equipment, five Philadelphia-area stations, WUSL, WIOQ, WWDB, WMGK, and WXTU, will all broadcast RBDS, beginning May 15. The five stations brings Philly's RBDS stations to 14, with more expected soon, according to the EIA release.

ELSEWHERE (cont'd)

CBS's Gil Gross has decided to get out of town for his vacation--way out of town. He'll be accompanying the U.S. Air National Guard's 109th Airlift Group to the North Pole--a training site on the Arctic Ocean, north of Greenland. The Guardsmen and Gil get to go through two days of classroom orientation, followed by two days of 30 below weather in the Arctic. The expedition takes place April 24-May 5. Gil's guest host line-up includes Democratic National Committee consultant Paul Begala, author Marianne Williamson, KFI, Los Angeles host Bill Press, Connecticut Governor Lowell Weicker, and former White House Press Secretary Dee Dee Myers.

M STREET BAZAAR. . .PEOPLE, PRODUCTS, AND PROGRAMMING

John Kobylt & Ken Chiampou, hosts of KFI, Los Angeles' "John & Ken" afternoon talk show, are offering market-exclusive interactive five minute feeds, giving an "L.A. angle" to the O.J. Simpson trial. The feeds are less-than-serious, and a good way to jazz up an otherwise tired story. For more info, call (213) 385-0101.

Steve Warren's Warren Media has released a new music scheduler package, Music 1, claiming to be the first Windows-based music software package. The package allows the user to draw format clocks on screen and fixes scheduling problems on the fly. For more info, call (512) 392-2415.

If you're tired of syndicated talk shows focusing on politics, here's something different. The Daniel Morgan Show, a weekday psychic call-in program based in Charlotte, NC, is available via satellite on a market exclusive basis. For more info, call Marc Woods at (704) 543-9626.

Rock Around the World, a nationally syndicated show popularized in the 70's, is back via the Internet. The Best of Rock Around the World will also be available soon in syndication to radio stations. At its peak, the show was heard on 160 stations and the Armed Forces Radio and Television Service. The program is now available on the Internet's World Wide Web. For more info, call Alec Bigelson at (818) 347-5335.

Paul Kagan's Radio & TV Acquisitions and Finance Seminar has added three more speakers. They are Todd Benson, Vice President, Salomon Brothers; Mark Leavitt, Managing Director, Oppenheimer & Co.; and George Sosson, President & COO, Radio Equity Partners. The seminar is May 9-10 at the Park Lane Hotel in New York City. For more info, call (408) 624-1536.

ABC Radio Networks has elevated a few people this week. Director of Advertising Lesley Halpern has been promoted to Senior Director, Marketing. Ray de la Garza has been upped from Producer of the Tom Joyner Morning Show to Executive Producer. Former WJMO, Cleveland PD Ron Davis is now the PD of the Urban Gold format. Kisi Frank joins the company as Regional Manager, Affiliate Marketing for the Southwest Region, while Lynne Christopher is named Director of Market Development.

Dick Heatherton has been appointed regional manager for the Northeast Region at Westwood One. He was most recently an air personality on Westwood's AM Only format. Ken Mellgren has been named manager of Affiliate Relations for that same region. Mellgren had been regional director of operations and news for Metro Networks.

CBS Sportscaster Jim Nantz has been tapped to host the CBS Radio Network's daily sports feature, Sportstime, beginning Monday, April 17. Sportstime is a three-and-a-half minute daily feature covering all aspects of sports. He replaces Greg Gumbel.

The NAB's Director of Media Relations, Doug Wills, is leaving the organization to join Waggener Edstrom, a Bellevue, WA PR firm. Wills will handle the corporate PR and advance technology accounts for Microsoft, serving the Washington, DC and national media outlets.

Jones Satellite Networks has promoted Margaret Johansen to Affiliate Relations Specialist. Previously, she was a sales assistant. Also, Tiffany Forney has been named Manager of Traffic and Clearance, upped from assistant manager.

Emmis Broadcasting's Revenue Development Systems has named Debbie Ophoven to Director of Sales. Ophoven was most recently New Business Director for WALK-AM & FM, Patchogue, NY (Long Island). Also, Paige Ladendorff is now a Vendor Consultant. She was New Business Director at WRKO, Boston.

* * * *

The M Street Journal

Radio's Journal of Record

304 Park Ave. S., 7th Floor, New York, NY 10010 PHONE (212) 473-4668 FAX (212) 473-4626

CHANGES AT THE BUSINESS RADIO NETWORK Colorado Springs, CO-based Business Radio Network went through quite a few changes this week as it's changed its name to SMI Business Radio. Former Southern Star Broadcasting President Bob Long will be President and CEO of SMI Multi Media Group, the parent corp. of the web. More details are on page 7.

A ROSE FOR ENTERCOM Entercom is buying its way into the Rose City by picking up Apogee Communications' classic rocker KGON, Portland, sports outlet KFX, Oregon City, and modern rock KMUZ-FM, Gresham for \$24.5 million. KMUZ-FM is currently in an LMA-to-purchase controlled by Apogee with Pacific Northwest Broadcasting. Entercom entered into an immediate LMA on KGON/KFX, and assumes the LMA with KMUZ-FM. The deal leaves Apogee with stations in only one market--Tucson.

FORMAT CHANGES & UPDATES (# change accompanies new ownership) (// simulcast)

		<u>formerly</u>	<u>becomes</u>
AL Lineville	WZZX-780	country // FM	adds talk 6am-2pm
Sheffield (M. Shoals)	WBTG-1290	MGS - c. Christian	MGS - christian CW
AR Texarkana	KYGL-106.3	new	classic rock
	(KYGL is in an LMA-to-own with country WLLI)		
CA Newport Beach (L.A.)	KBCD-103.1	jazz	hot AC
Santa Monica (L.A.)	KACD-103.1	jazz	hot AC
CO Boulder	KBKS-1490	new rock	reported silent
DE Rehoboth Beach (Sal.)	WGMD-92.7	soft AC	news, talk
FL Panama City	WGNE-590	sports	jazz
	(WGNE expects to go to SMN - adult standards in June)		
Port St. Joe (Panama)	WMTO-93.5	# jazz	country "Bubba Radio"
	(Bubba plays a country and country rock mix)		
St. Augustine (Jacks.)	WSOS-94.1	WW1 - soft AC	WW1 - adult contemp.
GA Atlanta	WIGO-1340	news, talk	urban AC // WALR
	(WIGO is in an LMA with WALR/WCNN and an SMA with WSB)		
Springfield	WSGF-103.9	WQQT, SMN - oldies	SMN - urban gold
HI Honolulu	KUMU-1500	easy // KUMU-FM	WW1 - adult standards
IL East St. Louis	WESL-1490	black gospel	urban AC
	(WESL is reportedly in an LMA-to-own with a local group)		
Normal	WIHN-96.7	# oldies	rock
	(WIHN enters in to an LMA-to-buy with Kelly Broadcasting)		
IN Covington (Danville)	WCDV-103.1	oldies	JSN - soft AC
LA Baton Rouge	WJFM-88.5*	new	religion (May 15th)
MA New Bedford	WNBH-1340	oldies	talk
MI Munising	WQXO-1400	adult standards	adds WW1 - standards
	(WQXO also adds Peoples Radio Network talk from 2-5pm)		
MN Bemidji	KKBJ-FM-103.7	# CHR	WW1 - adult contemp.
MS Hattiesburg	WXRR-104.5	# WHSY-FM, silent	classic rock
Houston (Tupelo)	WSYE-93.3	WW1 - AC	WW1 - 70's oldies
MO Cameron	KMRN-1360	# country	soft AC
NV Las Vegas	KRBO-105.1	oldies	news from AP & TV-3
North Las Vegas	KKDD-1410	KFMS, country	CSN - children's
NM Clovis	KICA-980	Spanish	talk
NY Conklin (Binghamton)	WMTT-100.5	new	classic rock "The Met"
Plattsburgh	WZBZ-1070	news, talk	gold based AC
NC Asheville	WSKY-1230	oldies, talk	talk
	(WSKY simulcasts all but morning drive with WRAQ Brevard SC)		
Waxhaw (Charlotte)	WIST-FM-106.1	new	SMN - standards // WIST
	(WIST-FM is in an LMA-to-own with WIST)		
NC Winston-Salem	WPIP-880	new	religion

April 19, 1995 Vol. 12 No. 16

ROBERT UNMACHT and PAT McCRUMMEN, Publishers

BILL DAVIES, Associate Editor BLAKE FITCH, Administrative Assistant

Copyright 1995 M Street Corporation. All rights reserved. No portion of The M Street Journal may be copied, faxed, retransmitted, or reproduced in any form without the written permission of the publishers. All efforts are made to keep the data as accurate as possible. However, errors and omissions are unavoidable. Formats of stations listed reflect the analysis and groupings of M Street Corp. and may differ from the station's opinion or interpretation. ISSN 1052-7109

The M Street Journal is published weekly except the last week of December. Subscriptions are available for \$119 per year, which includes a copy of the annual M Street Radio Directory. Subscriptions are also available for \$36 per quarter. The directory is available separately for \$44.00 (price includes shipping).

FORMAT CHANGES & UPDATES (cont'd)

OH East Liverpool	WOHI-1490	oldies	adds talk
OR Eagle Point	KZZE-1220	new	rock
PA Huntingdon (Altoona)	WLAK-103.5	# hot AC	AC // WMRF-FM "Murph"
Port Matilda	WIKN-107.9	rock CHR	reported silent
Tioga (Elmira)	WPHD-94.7	classic rock//WZMT	classic rock // WMTT
Tobyhanna	WPMR-FM-107.9	silent	CHR // WKRZ
	(WPMR-FM is in an LMA-to-own with Keymarket's WKRZ Wilkes-Barre)		
SC Brevard	WRAQ-1240	soft AC, talk	talk
	(WRAQ simulcasts all but morning drive with WSKY Asheville NC)		
Conway (Myrtle Beach)	WJXY-1050	southern gospel	WW1 - adult standards
TN Newport	WNPC-FM-92.9	country	adds SMN Real - CW
Newport	WNPC-1060	country // FM	adds SMN Real - CW
TX Crockett	KIVY-1290	standards, talk	talk
Glen Rose	KCLE-FM-92.1	country	adult contemporary
Monahans (Odessa)	KCDQ-102.1	cls rock & country	classic rock
New Boston	KEWL(CP)-95.1	new	to be oldies (June)
Odessa	KNDA-1000	silent	Spanish
VA Richlands	WGTH-540	# WRIC, AC & talk	southern gospel

NEW STATIONS: APPLICATIONS (* non-commercial station) (& reapplication)
(+ competes with existing application)

CA 101.7	Los Molinos	6000 w, 328 ft	Tehama County Comm. Bcstrs.
IL 90.1*	Carlinville	3000 w, 295 ft	Illinois Bible Institute
ME 89.3*	Freeport	8000(v), 200(h), 394ft	Downeast Christian Comms.

NEW STATIONS: ACCEPTED FOR FILING

AZ 89.1*	Dreamland	4-7-95	American Family Association
89.3*	Prescott	4-7-95	Northern Arizona University
90.7*	Show Low	4-7-95	Northern Arizona University
95.1	Winslow	4-6-95	Desert West Air Ranchers Corp.
HI 90.9*	Hanalei	4-7-95	Kekahu Foundation, Inc.
ID 107.9	Shelley	4-6-95	Woodcom, Inc.
IL 91.3*	Effingham	4-7-95	Southern Illinois University
101.3	Virginia	4-6-95	Mark J. Langston
IA 93.1	Muscatine	4-6-95	Muscatine Communications, Inc.
KS 104.1	Fredonia	4-6-95	KGGF-KUSN, Inc.
LA 98.9	Franklinton	4-6-95	Gaco Broadcasting Corp.
ME 97.7	Winter Harbor	4-6-95	Theodore Enfield
MI 103.7+	Harbor Beach	4-6-95	Jennifer & Edward Czelada
103.7+	Harbor Beach	4-6-95	Thumb Broadcasting, Inc.
MN 96.7	Bagley	4-6-95	Omega Broadcasting Co.
MT 91.9*	Hamilton	4-7-95	University of Montana
NH 90.9*	New London	4-7-95	Colby-Sawyer College
NJ 89.1*	Rio Grande	4-7-95	Mercer County Comm. College
NY 101.9	Alfred	4-6-95	Pembrook Pines Elmira, Ltd.
105.3	Grand Gorge	4-6-95	Sound of Life, Inc.
106.5	Minetto	4-6-95	Robert J. Raide
ND 105.1	Cavalier	4-6-95	Rob Ingstad Broadcasting, Inc.
OH 90.9*	Bryan	4-7-95	Public Bcstg. Found. of NW OH
91.9*	Defiance	4-7-95	Public Bcstg. Found. of NW OH
OR 102.9	Bonanza	4-6-95	B&B Broadcasting, Inc.
92.7	Burns	4-6-95	Stanley M. Swol
TN 91.7*	Cookeville	4-7-95	Nashville & Davidson County
TX 97.1	San Saba	4-6-95	Texas Country Connection, Inc.
WA 102.9	Quincy	4-6-95	Quincy Community Radio
WV 103.7	Fisher	4-6-95	James M. Cookman
107.3	Kemmerer	4-6-95	Jimmy Ray Carroll

NEW STATIONS: GRANTS

CA 106.7	Lompoc	1650 w, 1237 ft	Stuart McRae
TX 96.5	Sterling City	50000 w, 492 ft	Leonel Sanchez & Mark C. Nolte

TRANSLATORS/BOOSTERS/SYNCHRONOUS XMTR: APPLICATIONS

AK new-91.3*	Nome	188 w, KSKA	Alaska Public Telecomm.
new-88.3*	Palmer	50 w (h), KATB	Christian Broadcasting
new-88.7*	Wasilla	250 w (h), KATB	Christian Broadcasting

CONSTRUCTION PERMIT ACTIVITY

AL WRLD-FM-95.3	Valley	moves from 98.1 MHz
CA KZPO(CP)-103.3	Lindsay	granted replacement of expired CP (4th)
KMGX(CP)-107.1	Rio Dell	granted replacement of expired CP
KUKI-FM-103.3	Ukiah	granted extension of time to increase to 2700 w, 1837 ft
KGRB-900	West Covina	granted extension of time to increase to 5000 w days, 1000 w nights, DA-2
FL WAVQ(CP)-104.3	Inglis	granted extension of time
WFSW(CP)-89.1*	Panama City	requests extension of time (2nd)
LA KICR-FM-98.7	Oakdale	cancelled CP to increase to 34100 w
ME WBZN(CP)-107.3	Old Town	granted replacement of expired CP (4th)
MI WJNR-FM-101.5	Iron Mountain	increases to 100000 w, 613 ft
MS WLTD-106.3	Lexington	requests extension of time to increase to 22500 w, 689 ft
MO KRLI(CP)-97.5	Malta Bend	granted extension of time
NY WSQE(CP)-91.1*	Corning	granted extension of time
WSUF(CP)-89.9*	Noyack	granted extension of time
NC WPIP(CP)-880	Winston-Salem	dismissed license to cover for new station
OH WNUS-107.1	Belpre	granted extension of time (4th) to increase to 4700 w, 351 ft
OK KLBC-107.1	Durant	granted extension of time (2nd) to change to 6900 w, 617 ft, class C3, change xmtr loc.
KABH(CP)-95.1	Shawnee	granted extension of time
PA WAEB-790	Allentown	decreases to 3600 w days, changes xmtr location to 75-30-50 40-39-37
WHPN(CP)-88.1*	Harrisburg	granted extension of time (2nd)
SC WRLQ(CP)-106.3	Ladson	cancelled CP, deleted call letters
TN WLJQ(CP)-105.9	Colonial Heights	granted extension of time (2nd)
WUTK-FM-90.3*	Knoxville	requests extension of time (2nd) to increase to 800 w (v), 69 ft
VA WLVA-590	Lynchburg	granted extension of time to increase to 5000 w days

FACILITIES/PARAMETERS: APPLICATIONS

FL WEDR-99.1	Miami	(& reapplication) [docket number]
(CP)-105.5	St. Augustine Beach	install auxiliary antenna system
IN WSJD(CP)-100.5	Princeton	one step application to change to class C3
IA KXOF-106.3	Bloomfield	increase to 6000 w, change xmtr location
MI WHMI-FM-93.5	Howell	increase to 9000 w, 367 ft, change xmtr location, class C3, [89-264]
NE KLRB-97.3	Aurora	change to 2600 w, 354 ft
NH WKNH-91.3*	Keene	one step application to change to class C1
PR WIOB-97.5	Mayaguez	decrease to -387 ft, change xmtr location and antenna support. struct. height
SC WMAP-FM-102.3	Pageland	increase to 50000 w
TN WKWT-104.9	Union City	cancelled CP to increase to 6000 w, 292 ft
TX KENS-1160	San Antonio	change to 6000 w, 290 ft
		increase to 10000 w days, make changes in antenna system

Returned/Dismissed Applications

ME WSEW-88.5*	Sanford (Denied)	relocate main studio outside principal community
NC WPIP(CP)-880	Winston-Salem (D)	make changes in antenna system

FACILITIES/PARAMETERS: GRANTS

AL WJIA(CP)-88.5*	Guntersville	increase to 426 ft, change xmtr location to 34-25-33 86-18-20
CA KMGX(CP)-107.1	Rio Dell	increase to 3250 w, 1702 ft, class C2, change xmtr loc. to 40-30-03 124-17-10
FL WMMK-92.1	Destin	decrease to 223 ft, change xmtr location
WTPS(CP)-100.7	Quincy	increase to 6000 w, change xmtr loc. to 30-29-55 84-27-39
GA WKNH-99.3	Lumpkin	change xmtr location to 32-15-24 85-00-08, change to directional antenna
WATG(CP)-95.7	Trion	increase to 1300 w
IA QMG-FM-95.3	Independence	change to 3840 w, 410 ft, change xmtr location to 42-28-32 91-52-26, change antenna support. struc. height

FACILITIES/PARAMETERS: GRANTS (cont'd)

ME WBNZ(CP)-107.3	Old Town	increase to 436 ft, change xmtr loc. to 45-00-35 68-44-53
MD WPOC-93.1	Baltimore	install auxiliary system
WILC-900	Laurel	operate xmtr by remote control
MI WMUZ-103.5	Detroit	make changes to auxiliary system
NE KEFM-96.1	Omaha	decrease to 1410 ft
NM KAHP(CP)-103.7	Grants	decrease to 1299 ft, change xmtr loc. to 35-28-03 108-14-25
KEFE(CP)-107.5	Los Alamos	change to 25000 w, -121 ft, class C3, change xmtr loc. to 35-59-47 105-53-49
NY WRGX-107.1	Briarcliff Manor	change to 890 w, 590 ft, change xmtr location to 41-04-49 73-48-26
WSQE(CP)-91.1*	Corning	change to 3600 w, 653 ft, DA, chg. xmtr location to 42-06-20 76-52-17, class B1
OK KLBC-107.1	Durant	modify CP to change to 6900 w, 617 ft, change xmtr loc. to 34-03-56 96-29-36, class C3, [88-48]
PA WHPN(CP)-88.1*	Harrisburg	change to 540 w, 105 ft (as modified), change xmtr location to 40-15-44 76-53-11
RI WUAE(CP)-99.7	Wakefield	change to 2300 w, 535 ft, change xmtr location to 41-34-22 71-37-66, DA, change antenna support. struc. height
SC WCIG-107.1	Mullins	one step application to change to class C2

CALL LETTER CHANGES (# applied for by new owners)

AK KANH(CP)-90.3*	Anchorage	becomes	KNBA	4-7-95	
AZ KJYK-1490	Tucson		KMXZ	4-5-95	
AR KJEM-1190	Bentonville		KESE	4-7-95	
KUKB(CP)-106.3	Texarkana		KYGL	4-7-95	
CA KXHA-104.3	Shafter		KLYD	4-8-95	
CO KYBG-FM-92.1	Castle Rock		KNRX	4-10-95	"92-X"
FL WWUA(CP)-90.1*	Inverness		WJUF	4-14-95	
WOMX-950	Orlando	#	WZKD	4-7-95	
GA WQOT-103.9	Springfield		WSGF	4-7-95	
IL WZLZ-103.9	Quincy	#	WMOS	3-31-95	"The Moose"
WDND-105.5	Wilmington	#	WYKT	4-10-95	"Cat"
KS new-95.7	Sterling		KGGG	4-5-95	
KY WBND-1160	Florence		WKYN	4-10-95	
LA WLUX-1550	Port Allen	#	WPFC	4-7-95	
ME WKRH-105.9	Bath	#	WBCI	(requested)	
MD WZYQ-103.9	Braddock Heights	#	WXVR	(requested)	
MA WBPS-1060	Natick	#	WBIV	4-7-95	
MI WBTZ-100.9	Pinconning	#	WMJK	4-8-95	"Magic"
WUVE-104.5	Saginaw		WMJA	4-8-95	"Magic"
MS WHSY-FM-104.5	Hattiesburg	#	WXRR	4-10-95	
MO KESE-93.3	Seligman		KJEM	4-7-95	
NY WXEJ(CP)-100.5	Conklin		WMTT	4-14-95	"The Met"
new-103.9	Mexico		WUPN	4-14-95	
WKOJ-92.7	Middletown		WRRV	4-6-95	
WXTM-99.7	Monticello		WJUX	4-14-95	"Jukebox"
WNWX-1070	Plattsburgh		WZBZ	4-14-95	
WTRY-FM-98.3	Rotterdam	#	WYSR	(requested)	"Star"
NC WLWW-106.1	Waxhaw		WIST-FM	4-14-95	
PA WMHU-93.1	Renovo	#	WKKW	4-14-95	
TN WRRW-92.9	Bartlett		WMFS	4-10-95	"Memphis"
TX KBUD-99.7	Amarillo	#	KLLR	(requested)	
KPJN-106.3	Gonzales		KCTI-FM	4-6-95	
KBWE(CP)-95.1	New Boston		KEWL	4-14-95	
KKMY-104.5	Orange	#	KJQY	(requested)	
VA WGTH-105.5	Richlands		WGTH-FM	4-5-95	
WRIC-540	Richlands	#	WGTH	4-5-95	
WA new-95.1	Winlock		KITI-FM	4-12-95	

PROPOSED STATION TRANSFERS

(314 asset sale, 315 transfer of control, 316 reorganization)		
AL WCKS-102.7	Fruithurst	316 from Steven L. Gradick to WCKS, Inc.
AK KMBQ-99.7	Wasilla	315 from KMBQ Corp. (Alaska Bcst. Comms.) to KMBQ Corp. (Gary E. Buell, Sr.)
AR KHOX-105.3	Hoxie	314 from Mitchell Broadcasting Co., Inc. to John J. Shields

PROPOSED STATION TRANSFERS (cont'd)

AR KLRE-90.5*/ KUAR-89.1*	Little Rock	314	from Little Rock Schools/Univ. of Ark. to University of Arkansas Board of Trustees
CA KBLA-1580	Santa Monica	314	from Keymarket of Los Angeles, Inc. to River City License Partnership
IL KATZ-1600	St. Louis	316	from Noble Broadcast of St. Louis (Group) to Noble Broadcast of St. Louis (Holdings)
LA WWL-870/ WLMG-101.9	New Orleans	314	from Keymarket of New Orleans, Inc. to River City License Partnership
MD WWPL-107.1	Federalburg	316	from P.M. Broadcast Engineering, Inc. to Apex Associates, Inc.
NY WBEN-930/ WWKB-1520/WMJQ-102.5/ WKSE-98.5	Buffalo Niagara Falls	314	from Keymarket of Buffalo, Inc. to River City License Partnership
WALL-1340/ WKOJ-92.7	Middletown	314	from Atlantic Morris Broadcasting, Inc. to Crystal Communications Corp.
NC WLWW-106.1	Waxhaw	315	from Union County Comms. (J. Sigmon) to Union County Comms. (GHB of Waxhaw)
WLWW-106.1	Waxhaw	314	from Union County Communications, Inc. to GHB of Waxhaw, Inc.
PA WGBI-910	Scranton	314	from Lackazerne, Inc. to River City License Partnership
WILK-980/ WKRZ-98.5/ WGGY-101.3	Wilkes-Barre/ Scranton	314	from Keymarket of Nepa, Inc. to River City License Partnership
TN WJCE-680/ WRVR-FM-104.5	Memphis	314	from Keymarket Communications to River City License Partnership
WLAC-1510/105.9	Nashville/	314	from Keymarket of Nashville, Inc. to River City License Partnership
WJCE-FM-101.1	Russellville	316	from Russell-Fields, Inc. to Blue Bonnett Radio, Inc.
TX KEMM-92.1	Commerce	316	from American General Media of Lubbock to American General Media-Texas, Inc.
TX KKCL-98.1	Lorenzo	316	from American General Media of Lubbock to American General Media-Texas, Inc.

DISMISSED STATION TRANSFERS

TX KEMM-92.1	Commerce (D)	316	from Russell-Fields, Inc. to Blue Bonnett Radio, Inc.
--------------	--------------	-----	--

FM ALLOCATIONS: PROPOSED AMENDMENTS

CO KAFM(CP)	Grand Junction	to 100.7 C1, comments due June 5, replies June 20
NV new	Pahrump	add 95.1 A, comments due June 5, replies June 20
NC new	Fair Bluff	delete 105.3 A, comments due June 5, replies June 20

FM ALLOCATIONS: GRANTED AMENDMENTS

TX KEMM	Commerce	to 103.3 A from 92.1 A
KNES	Fairfield	to 99.1 A from 92.1 A
KDOK	Tyler	to 92.1 C3 from A

FM ALLOCATIONS: DISMISSED AMENDMENTS

CA KYHT(CP)	Yermo	to 105.3 B1 from A
-------------	-------	--------------------

WASHINGTON THIS WEEK

Attention licensees of AM, FM, and FM Translators in North Carolina and South Carolina, and licensees of FM Translators in Washington state. The FCC will be sending out renewal booklets containing the necessary information to renew the licenses of radio stations. To ensure the booklets are sent to all licensees at their official mailing address, the Commission has published a list of the official addresses for review by each station. If you haven't updated your address with the Commission, mail your corrections to the FCC, Janice Smith, Room 302, Washington, DC 20554. You can fax them to (202) 418-1411.

The FCC Field Operations Bureau's Denver office handled a call by an ex-employee who was on vacation at Lake Tahoe, NV about a traveler's information station requesting people tune to 101.5 MHz for information about lodging facilities for the North Star Ski Resort. TIS stations are only licensed for operation on 530 KHz or 1610 KHz. The San Francisco office showed up to inspect the facility, and shut it down.

The FCC has revised its information regarding how to download FCC documents over the Internet. For more info, call Jorden Brinn at (202) 418-0507 or email at jbrinn@fcc.gov.

WASHINGTON THIS WEEK (cont'd)

Reacting to rising demand for exhibit space, the NAB has announced that it will expand to the Sands Expo and Convention Center (SECC) in the 1996 Convention while retaining the use of the entire Las Vegas Convention Center (LVCC). The Sands facility will house additional NAB '96 exhibits as well as the growing MultiMedia World Conference and Exhibition, which was shoehorned into all 50,000 square feet available at the Las Vegas Hilton.

John Able, the NAB's Executive VP-Operations, commented on the convention's dramatic growth. "Since 1990, the show has increased by 270 companies, 25,000 attendees, and 150,000 net square feet of exhibit space." One Las Vegas morning drive newscast announced the convention attendance at eighty, which was soon corrected to 80,000!

Reflections of 'Vegas... from a radio standpoint.

by Bill Davies

USA Digital Radio provided a dramatic demonstration of CD quality broadcasting. Their digital audio broadcasting (DAB) R&D had begun in 1990 with the participation of CBS Radio, Gannett Broadcasting, Group W, and Xetron Corp. (both Westinghouse). In a specially equipped bus moving about town in 20 minute tours, riders with individual headsets and controls could experience the difference between regular FM and AM analog broadcasts and DAB. The In-band, On-channel (IBOC) digital technology was piggybacked on conventional signals with a five second delay for comparisons.

The FM demonstration utilized the University of Nevada's KUNV (91.5 MHz) 15 kw stereo signal augmented by a 500 watt DAB transmitter at their Black Mountain site 10 miles away. A listener noting multipath breakup while the bus was in motion could immediately switch to digital and hear the same briefly-delayed broadcast with total clarity. Monitors displayed the typical analog signal and the "weaker" DAB sidebands.

The ride for the AM demo included several trips through underpasses, but this reviewer and several adjacent passengers did not note a significant difference in either the audible signal or in the monitor during this experiment. The dramatic difference was in the audio signal itself. In contrast to mono AM, the digital signal contained the full aural spectrum and was, of course, in stereo. (Conventional AM stereo and this DAB system are not compatible.)

Many visitors - this one included - first discovered "KUSA" on car radios as the search feature surprisingly locked on 1660 KHz in the forthcoming Expanded Band. The 10 kw station was temporarily authorized for NAB '95 and was augmented by about 25 watts of digital signal. The antenna was one of six towers vacated by the former KFMS-1410 KHz (now KKDD) when it moved to a new transmitter site.

At the convention itself, a Sunday "Digital Audio Broadcasting" session moderated by reps from USA Digital Radio highlighted the basics (and advantages) of the system. It was apparent from audience participation that U.S. broadcasters, at least in these early stages of DAB experimentation, favor the IBOC concept. A BBC representative, not convinced, rather aggressively championed the competing "Eureka" system.

A Wednesday session, "Upgrading Your Radio Station - A Manager's Guide," was moderated by NAB's Barry Umansky. Twenty-two percent of commercial radio stations are already involved in a duopoly and/or LMA. The FCC officially sees the licensee as controlling the LMA, and with the first round of renewals approaching, the broadcaster must exhibit that the community's needs are being addressed.

Larry Eads of the FCC's Audio Services Division addressed the translator situation. He noted that while broadcasters may construct translators to fill "holes" within their own contours, they may provide engineering assistance but no monetary consideration to non-broadcast translator licensees carrying their signal outside the contour. Abuses by the non-broadcast owners have apparently been rampant.

Eads requested that the trade publications keep more abreast of broadcaster vs. FAA difficulties. He commented that the FAA now agrees that its EMI (Electromagnetic Radiation Interference) model may be too restrictive to FM broadcasters. It's even possible for aircraft-related frequencies to be changed to alleviate interference problems.

ELSEWHERE

With the change in ownership and management at Business Radio Network, the Don McDonald Show, now airing out of the Disney Radio Studios in Orlando, FL, will return to SMI Business Radio's programming fare after a two year hiatus. It will air from noon to 3 pm ET weekdays and 2pm to 5pm Saturdays. Long time BRN VP/programming Dave Rose is upped to EVP/General Manager. Skip Joeckel moves to EVP/Affiliate Sales. The weekday "Bill Bresnan Show" has been dropped. Other programming changes during the weekday have been scheduled, so if you'd like more info, call Skip at (719) 528-7040.

Spring Broadcasting was the successful bidder for Hartstone & Dickstein station group. Spring will pick up the eight station group for \$15.326 million. Spring has yet to do the due diligence, the court must put the transaction through an overbid procedure, and the Commission must approve the sale. The overbid procedure will permit interested parties to overbid the Spring offer by at least \$325,000 and are being accepted until Wednesday, May 17.

Talk about a quick turnaround. WIHN, Normal, IL has been sold--twice in the same day. Bell Mason Broadcasting sold the rock station (which just switched from oldies) to Cyber Communications for \$790,000. Cyber then entered into an LMA-to-purchase with Kelly Communications, which has agreed to buy the station for \$960,000, pending approval.

Inside Radio reports Orange and Rockland Utilities-owned Atlantic Morris is selling off its last station--oldies WKTU, Ocean City, NJ (Jersey Shore) to South Jersey Radio for approx. \$850,000. South Jersey already owns 70's oldies WMGM, Atlantic City, and news/talk simulcast WOND, Pleasantville, and WONZ, Hammonton, as well as a couple of local newspapers.

Premiere Radio Networks has dropped WSIX, Nashville's Gerry House morning show. House was on approx. 20 stations. Radio & Records reports House will continue with Premiere on other projects.

Evergreen's sports station in Chicago, WMVP, has picked up the rights to both the Chicago Bulls and the White Sox. It's a five year deal for \$32 million, with a five year option. Group W's WMAQ rights end at the end of this season for each team.

Katz Radio Group has formed a new company, KRG Dimensions, which will manage all of KRG's strategic marketing and sales service units. KRG Sales' Bonnie Press will oversee the new division, which is designed to superserve all of the stations under each of Katz's rep companies.

Married working couple households are the U.S.'s "Income Elite," according to a new study from the Interep Radio Store. These dual income earners are typically more affluent and upscale than any other type of household in the U.S. Their median income is around \$42,000. Nearly one-third of all dual-earner married couples earn \$75,000 or more. These couples tend to be heavier-than-average radio listeners, especially in the work place. 64% of full-time working women who have radios at work spend 54% of their time listening while 53% of professional/managerial men spend 42% of their time tuned in. The most popular formats to reach this group are oldies, classical, country, news/talk, and adult contemporary.

Paxson Communications has formed its long talked-about Infomall Cable Network, a 24-hour long-form infomercial network for cable systems. It's the second infomercial network Bud Paxson's formed after last year's IN TV network, which serves the broadcast industry. The new cable network launches August 1, 1995, and will pay cable systems \$4.00 per year per residential subscriber plus \$0.33 1/3 per month for carriage.

M STREET BAZAAR. . .PEOPLE, PRODUCTS, AND PROGRAMMING

SW Networks is entering the entertainment news business by launching SW Entertainment News, using SW's network of backstage and on-air correspondents. The service will provide news, interviews, and information on Hollywood, technology, and lifestyles on five different networks targeted at alternative, hip-hop, country, rock, and "mixed-bag", a general entertainment feed service. All services will be available both over-the-air and on-line. Former ABC News exec. Gayl Murphy has been tapped to head up the news service. For more info, call (212) 833-5400.

Eagle Productions is producing a "Branson Live," a two-hour Saturday night broadcast from the Charley Pride Theatre in Branson, MO. The show will feature a mix of live interviews, call-ins, and music. The show is being syndicated by Talk America. Call (502) 754-1380 for more info.

Broadcast Programming announces the launch of two new digital formats this Spring. Digital New AC is designed as a blend of smooth jazz and selected AC songs. There are approx. 900 songs in the library. Digital Southern Gospel programs "down home" hymns and praise melodies. Both formats are programmed day-by-day with weekly music lists on floppy disks. The libraries are available on either CD or hard drive. For more info, call BP at (800) 426-9082.

Jim Taszarek's Taz Media has launched the "News/Talk Selling" newsletter for all news, talk, sports, business, and full service stations. It covers day-to-day selling problems, sales management, and the specific sales staff challenges that come with news/talk formats. For more info, call (602) 970-4200.

With the unending rise in the popularity of talk programming, there's a new service that will transcribe talk shows. Brooklyn, NY-based Mystic Word transcribes tapes and provides computer services as well. For more info, call (212) 388-7325.

Florida liberal T.J. Walker has added a third hour to his daily program. The new time slot is 11 am to 2 pm ET weekdays. The show features call-ins, musical parodies, and humorous sketches. It's syndicated by IBN. For more info, call (813) 572-4643.

Silverman Productions announces the availability of the SilverBaby television campaign for radio stations using an up-tempo format, and were originally designed for country and oldies formats. For a demo, call (800) 747-4583.

DirectCom Networks, a division of satellite service provider United Video, is launching digital radio programming and data services broadcast directly to home dishes via satellite. The system uses the 18-inch dishes now being used by the video DSS systems to offer subscription-based "niche" audio services. No word yet on when the programming will be available.

The Morningstar Radio Network has added some staff. Former KNTL, Bethany, OK (Oklahoma City) GSM Steve Faulkner joins the Nashville office in national sales. Lisa Guidry, formerly with WQCK, Clinton, LA (Baton Rouge) joins as syndication associate. Tammy Meadows is named marketing assistant.

MediaAmerica's promotion division, which provides promotion support for syndicated radio shows and their advertising clients, changes its name this week to Promotion Development Group, Inc. As part of the company's revamp, John Zamoiski joins the company as President. Zamoiski was most recently with Don Jagoda Associates as Sr. VP/Director of Business Development.

Paragon Research's Mike Henry has been promoted to Managing Partner effective immediately. He had been Vice President since 1989 and Director of Marketing from 1986 to 1989. Paragon has also tapped Mike Henderson to Director of Sales, Larry Johnson to Research Manager, and Brian Austin to Project Coordinator.

* * * *

The M Street Journal

Radio's Journal of Record

304 Park Ave. S., 7th Floor, New York, NY 10010 PHONE (212) 473-4668 FAX (212) 473-4626

FCC GRANTS SECRET WISH: The Commission granted the transfer assignment of Secret Communication's WWNK-FM, Cincinnati to Great American TV & Radio and the related request for waiver of the one-to-a-market rule. Great American is the current licensee of WKRQ and WKRC-TV, both Cincinnati. The Commission granted the sale on the "case-by-case" standard since the Cincinnati market is not a top 25 market and neither of the stations involved is a failed station. Details are on page 7.

CHHHH-CHHHANGES: Radio stations change formats every day so M Street wondered which markets changed the most; the winners were Albuquerque with 13 changes since January 1994, and Monterey with 12. For a list of the the top 19 markets by format changes, see page 8.

FORMAT CHANGES & UPDATES (# change accompanies new ownership) (// simulcast)

		<u>formerly</u>	<u>becomes</u>
AL Montgomery	WSYA-950	# adult standards	WNZZ, AP - news, talk
AZ Kachina Village (Flag)	KFLX-105.1	silent	adult contemporary
	(KFLX is a duopoly with country KSED)		
AR Little Rock	KKYK-103.7	rock	KSYG-FM, talk
	(Imus, Dr. Laura, Leykis, Reagan, Major amd Stephan)		
Little Rock	KSYG-1010	# news, talk	will go silent (Aug.)
	(KSYG will be sold to Group W to add coverage to WINS in New York)		
CO Loveland (Ft. Collins)	KLOV-1570	oldies	AP - news, talk
FL Melbourne	WFIT-89.5*	jazz, alternative	NPR - info, jazz
Rockledge (Titusville)	WHKR-102.7	country	adds After Midnight
GA Savannah	WCHY-FM-94.1	country	adds After Midnight
IL Eureka	WIVR-98.5	# WW1 - soft AC	WW1 - oldies
IA Des Moines	KKSO-1390	country // FM	CSN - children's
KS Kansas City	KFKF-FM-94.1	country	adds After Midnight
KY Danville	WMGE-107.1	country	adds SMN Real - CW
ME Bath (Portland)	WKRH-105.9	# classic rock	silent
	(WKRH will return as WBCI-FM, the format will be religion in May)		
MO Boonville	KWRT-1370	CW-talk-standards	country
Cape Girardeau	KAPE-1550	news, talk	adds Doug Stephan
Ozark (Springfield)	KZPF-92.9	new	BCN - country
	(KZPF is in an LMA with the owner of the Branson Music Network)		
NE Fremont (Omaha)	KHUB-1340	adult standards	talk
Lincoln	KEZG-107.3	WW1 - soft AC	WW1 - adult contemp.
NV Reno	KNEV-95.5	soft AC	hot AC
ND Kindred (Fargo)	KSSZ-FM-92.7	# CHR	to be Contemp. Christ.
	(With sale KSSZ becomes KPHT "Power 92")		
OH Bellaire (Wheeling)	WOMP-FM-100.5	CHR // WRKY	CHR "The New Womp"
Springfield (Dayton)	WAZU-102.9	classic rock	WING-FM, classic hits
OR Coos Bay	KDCQ-93.5	new	SMN - oldies
Eagle Point	KZZE-106.3	new	rock
	(This corrects last week's issue)		
Eugene	KDBS-840	talk	adds Doug Stephan
PR Bayamon (San Juan)	WRSJ-1560	Spanish easy list.	AP - news
SC Conway (Myrtle Beach)	WJXY-FM-93.9	country	adds ABC - Moby
Florence	WJMX-970	talk	adds Doug Stephan
New Ellenton (Augusta)	WAJY-102.7	news, talk	WW1 - adult standards
TN Oak Ridge (Knoxville)	WNFZ-94.3	CHR	new rock
TX College Station	KEOS-89.1*	new	variety

April 26, 1995 Vol. 12 No. 17

ROBERT UNMACHT and PAT McCORMEN, Publishers
BILL DAVIES, Associate Editor BLAKE FITCH, Administrative Assistant
GERALDASCHE, Data Services Director

Copyright 1995 M Street Corporation. All rights reserved. No portion of The M Street Journal may be copied, faxed, retransmitted, or reproduced in any form without the written permission of the publishers. All efforts are made to keep the data as accurate as possible. However, errors and omissions are unavoidable. Formats of stations listed reflect the analysis and groupings of M Street Corp. and may differ from the station's opinion or interpretation. ISSN 1052-7109

The M Street Journal is published weekly except the last week of December. Subscriptions are available for \$119 per year, which includes a copy of the annual M Street Radio Directory. Subscriptions are also available for \$36 per quarter. The directory is available separately for \$44.00 (price includes shipping).

FORMAT CHANGES & UPDATES (cont'd)

TX Corpus Christi	KSIX-1230	news	news & standards
	(AP news for one half hour, then	adult standards for	a half hour)
Pampa	KGRO-1230	adult contemporary	adds JSN - AC
Plainview	KKYN-FM-103.9	country	adds After Midnight
VA Alexandria (D.C.)	WCPT-730	all news	WBZS, business news
WA Everett	KRKO-1380	talk	adds Doug Stephan
WI Oshkosh	WVCY-690*	# silent	religion // WVCY-FM
WY Gillette	KGWY-100.7	country	adds After Midnight

NEW STATIONS: APPLICATIONS (* non-commercial station) (& reapplication)
(+ competes with existing application)

CA 100.1	Ludlow	25000 w, -216 ft	KHWY (California), L.P.
CO 88.1*	Pueblo	42000 w (v), 131 ft	Colorado Christian University
FL 89.3*	Dinsmore	1000 w (v), 247 ft	Ocala Radio Ministries, Inc.
91.1*	Flagler Beach	3000 w, 313 ft	Ocala Radio Ministries, Inc.
KS 101.9	Hill City	100000 w, 810 ft	Radio, Inc.
MS 88.9*	Pascagoula	27500 w, 344 ft	Judah Broadcasting Network, Inc.
NM 90.5*	Bernalillo	127 w, 3880 ft	Family Stations, Inc.
107.1	Jal	100000 w, 371 ft	John H. Wiggins
OH 88.1*	Spencerville	2600 w, 492 ft	Taylor University, Inc.
PA 88.1*	New Berlin	550 w, 417 ft	Montrose Broadcasting Corp.
TX 96.1	Edna	12800 w, 456 ft	Hill Country Radio, Inc.
90.7*	San Perlita	117 w, 167 ft	Faith Pleases God Church Corp.

Returned/Dismissed Applications

FL 1370	Henderson (R)	George M. Arroyo
MP 101.1	Garapan, Saipan (D)	Inter-Island Communications
OR 670	Woodburn (R)	94 Country, Inc.
PR 106.5+	Culebra (D)	Lloyd Santiago-Santos
106.5+	Culebra (D)	Lourdes Rodriguez Bonet

NEW STATIONS: ACCEPTED FOR FILING

AR 90.5*	Jonesboro	4-20-95	American Family Association
HI 90.1*	Lihue	4-20-95	Hawaii Public Radio
IL 88.5*	Danville	4-20-95	Creative Flair Communications
IA 89.7*	Ottumwa	4-20-95	Grassroots Broadcasting Co.
MS 88.9*	Pascagoula	4-20-95	American Family Association
NC 91.5*	Atlantic Beach	4-20-95	Craven Community College
OR 91.1*	Grants Pass	4-20-95	American Family Association
SC 88.9*	North Myrtle Beach	4-20-95	Covenant Educational Fellow.

NEW STATIONS: GRANTS

MO 90.1*	Springfield	6000 w, 328 ft	American Family Association
MT 88.9*	Great Falls	6000 w, 243 ft	Hi-Line Radio Fellowship, Inc.
PA 90.1*	New Castle	2000 w, 236 ft	Moody Bible Inst. of Chicago
PR 106.5	Culebra	6000 w, 663 ft	Aurio A. Matos

TRANSLATORS/BOOSTERS/SYNCHRONOUS XMTR: APPLICATIONS

CA new-98.1	Concord	186 w, KBGG	Shamrock Broadcasting
new-91.7*	Newcastle	250 w, KCJH	Stockton Christian Life
CO new-100.7	Battlement Mesa	125 w, KJYE-FM	MBC Grand Broadcasting
FL new-97.7	Tallahassee	13 w, WAFT	Temple Baptist Church
new-101.9*	West Palm Beach	19 w, WMCU	Trinity Evangelical Div.
KS new-99.5*	Hutchinson	250 w, KYFW	Bible Broadcasting Net.
ME new-101.9	Machias	48 w, WQDY-FM	Mainecasters, Inc.
MS new-105.5*	Vicksburg	38 w, KYFL	Bible Broadcasting Net.
MO new-96.3*	Lebanon	250 w, KUMR	Univ. of Missouri
NM new-100.7	Taos	250 w, KAFR	Moreno Valley Bcstg.
PA new-91.9*	Grove City	38 w, WAFT	American Family Assn.
TX new-99.1*	Waco	205 w, KERA	N. Texas Public Bcstrs.
NEW-89.1*	Weslaco	197 w, KEPI	World Radio Network
VA new-98.7*	Farmville	10 w (v), WJYJ	Educational Media Corp.
new-96.5*	Flint Hill	10 w (v), WJYJ	Educational Media Corp.
new-103.5*	Virginia Beach	10 w (v), WJYJ	Educational Media Corp.
WI new-101.3*	Port Washington	13 w, WPFJ	Family Ed. Bcstg.

TRANSLATORS/BOOSTERS/SYNCHRONOUS XMTR: GRANTS

AZ K206BL-89.1*	Dreamland	10 w, WAFR	American Family Assn.
AR K244DS-96.7	Fayetteville	115 w, KREB	Vekony Communications
W205CN-88.9*	Rogers	250 w, WAFR	American Family Assn.
CA K262AD-100.3*	Bakersfield	180 w, KDUV	Community Ed. Bcstg.
FL W251AF-98.1*	Naples	226 w, WSEB	Suncoast Educ. Bcstg.
GA W207AW-89.3*	Cuthbert	38 w, WAFR	American Family Assn.
KS K217CH-91.3*	Arkansas City	250 w, WAFR	American Family Assn.
MN K231AC-95.7	New Ulm	70 w, KJLY	New Ulm Christian Radio
MS W236AC-95.1*	Greenville	80 w, KYFL	Bible Broadcasting Net.
NM K291AD-106.1*	Des Moines	116 w (h), KENW-FM	Eastern New Mexico Univ.
OK K216CZ-91.1*	Alva	250 w, WAFR	American Family Assn.
OR K283AE-98.3	Cave Junction	11 w, KLDR	Grants Pass Bcstg. Corp
K231AB-94.1*	Turner	34 w, KWAX	State of Oregon
PA W297AD-107.3*	Philadelphia	10 w, WRDV	Bux-Mont Ed. Radio Assoc.
TX K277AG-103.3	Beaumont	250 w, KRQT	Patrick Parks
WI W271AC-102.1*	Appleton/Menasha	38 w, WFFF	Family Ed. Bcstg. Corp.
WY K224CI-92.7*	Lyman	19 w (v), KCSP	Western Insp. Bcstrs.

CONSTRUCTION PERMIT ACTIVITY

AL WSTH-FM-106.1	Alexander City	changes to 85800 w, 1047 ft, changes xmtr location to 32-45-30 85-28-20
WFFX-95.7	Tuscaloosa	increases to 981 ft, changes xmtr loc. to 33-05-38 87-15-15
AZ KSAZ-580	Marana	granted extension of time to decrease to 320 w nights, DA-N
AR KOLZ-98.3	Bentonville	cancelled CP to increase to 10550 w, 499 ft, class C3, [91-124]
KDEZ-100.3	Jonesboro	requests extension of time to move to 100.5 MHz, increase to 50000 w, 403 ft
CA KAFN(CP)-94.5	Hanford	requests extension of time
KQYZ(CP)-104.9	Lemoore	requests extension of time (2nd)
KNZS(CP)-880	Montecito	granted reinstatement of expired (CP)
KSQQ-96.1	Morgan Hill	changes to 4700 w, 161 ft, changes xmtr location to 37-11-01 121-48-09
KSSJ-101.9	Shingle Springs	requests extension of time (2nd) to increase to 44000 w, 521 ft
KUKI-FM-103.3	Ukiah	granted extension of time (2nd) to increase to 2700 w, 1837 ft
CO KPVW(CP)-107.1	Aspen	requests petition for reconsideration of cancellation of CP
KVYT(CP)-106.1	Basalt	granted replacement of expired CP (2nd)
FL WYNF-107.9	Coral Cove	license to cover for new station
WTPS(CP)-100.7	Quincy	granted extension of time (2nd)
WGNE-FM-98.1	Titusville	increases to 100000 w, 476 ft, class C1
WLOQ-103.1	Winter Park	removes DA
ID KUOI-FM-89.3*	Moscow	increases to 400 w (v)
IN WZBD-92.7	Berne	increases to 4100 w
WKHY-93.5	Lafayette	changes to 6000 w, 216 ft
WTHC(CP)-95.9	Seelyville	requests extension of time
WZDM-92.1	Vincennes	increases to 4100 w
KY WCKQ-104.1	Campbellsville	increases to 17000 w, 394 ft, DA, class C3
MI WZRK-93.5	Hancock	increases to 13500 w, 456 ft, class C3, changes xmtr loc to 47-06-06 88-34-11
MN KYCR-1570	Golden Valley	amends application to delete request to change city of lic. to St. Louis Park
MO KUNQ-99.3	Houston	requests extension of time (3rd) to change to 33400 w, 604 ft
NE KISP-106.3	Blair	requests extension of time to move to 101.5 MHz, increase to 25000 w, 301 ft
NV KRNC(CP)-89.5*	Reno	requests petition for reconsideration of cancellation of CP
KZTY(CP)-620	Winchester	granted extension of time
NH WRCI-107.7	Hillsboro	changes to 580 w, 738 ft, changes xmtr location to 43-09-00 71-47-56
WLKZ-104.9	Wolfeboro	changes to 280 w, 1053 ft, changes xmtr location to 43-32-44 71-22-45
NJ WNNJ-1360	Newton	requests extension of time to increase to 2000 w days, 320 w nights, DA-2

CONSTRUCTION PERMIT ACTIVITY (cont'd)

NM KYRK(CP)-100.9	Eunice	requests petition for reconsideration of cancellation of CP license to cover for new station
KYRK-100.9	Eunice	(This station was cancelled in April, but has filed a pet for recon.)
KEFE(CP)-107.5	Los Alamos	requests extension of time
NY WGFR-92.1*	Glens Falls	moves to 92.7 MHz, changes to 13 w (h), 49 ft
WCFE-FM-91.9*	Plattsburgh	requests extension of time to move to 89.7 MHz, change to 190 w, 2204 ft
NC WECR(CP)-102.3	Beech Mountain	granted extension of time
WXQR-105.5	Jacksonville	granted extension of time to move to 105.3 MHz, increase to 19000 w, 794 ft
OH WNUS-107.1	Belpre	granted extension of time (4th) to change to 4700 w, 351 ft
WKSW-101.7	Urbana	increases to 407 ft
OK KXOO(CP)-94.3	Elk City	granted extension of time to increase to 12200 w, 470 ft
PA WHPN(CP)-88.1*	Harrisburg	granted extension of time (2nd)
SC WRLQ(CP)-106.3	Ladson	requests extension of time
SD KAEN(CP)-89.5*	Little Eagle	requests extension of time
TN WLJQ(CP)-105.9	Colonial Heights	granted extension of time (2nd)
WRMX-96.3	Murfreesboro	requests extension of time to change to 53000 w, 1273 ft
WJBZ-96.3	Seymour	increases to 2900 w
WFRQ-94.9	Waynesboro	increases to 6800 w, 622 ft, changes xmtr location to 35-08-16 87-49-43
TX KRJT-FM-100.7	Bowie	requests extension of time to change to 6250 w, 435 ft
KBYG(CP)FM-105.5	Coahoma	requests extension of time
KELG-1440	Elgin	granted reinstatement of expired CP to increase to 800 w days, change city of license to Manor, TX
KQXX-98.5	McAllen	decreases to 997 ft, changes xmtr location to 26-07-14 97-49-18
UT KKWZ-93.7	Richfield	requests extension of time (6th) to increase to 33720 w, 3029 ft
VA WREL-FM-96.7	Buena Vista	granted extension of time to increase to 10000 w, 492 ft
WSVY-FM-107.7	Windsor	increases to 5200 w, 351 ft, DA, change xmtr location to 36-51-35 76-35-59
WA KJUN(CP)FM-104.9	Eatonville	requests extension of time
KRCW(CP)-96.3	Royal City	granted replacement of expired CP (2nd)
WI WLJU(CP)-106.9	Brookfield	granted extension of time
WJLW-95.9	De Pere	requests extension of time (3rd) to increase to 25000 w, 272 ft
WMSE-91.7*	Milwaukee	increases to 3200 w, 128 ft, changes xmtr location to 43-2-44 87-54-28
WY KKNQ(CP)-104.5	Laramie	requests extension of time (3rd)

FACILITIES/PARAMETERS: APPLICATIONS

AL WTXQ-1400	Andalusia	(& reapplication) [docket number] change xmtr loc. to 31-17-19 66-28-59
WSHK-97.7	Russellville	install auxiliary antenna system
AR KWRF-860	Warren	increase to 1000 w
CA KPAY-1060	Chico	operate xmtr by remote control
KALF-95.7	Red Bluff	correct coords. to 39-55-02 122-40-10
KYCY-93.3	San Francisco	change to 44600 w, 518 ft
KAGA(CP)-105.9	Santa Ynez	change to 94 w, 2463 ft, chg xmtr loc.
CO KHNC-1360	Johnstown	increase to 5000 w days, 690 w nights, make changes in antenna system
KRGS-810	Rifle	move to 690 KHz, decrease to 970 w days 12.5 w nights
CT WXZR-98.7	East Lyme	modify CP to increase to 279 ft, change xmtr location
FL WOTS-1220	Kissimmee	increase to 110 w nights
WVIJ-91.7*	Port Charlotte	increase to 2000 w, change xmtr location
WLVJ-640*	Royal Palm Beach	direct measurement of antenna power
GA WSGF-103.9	Springfield	increase to 6000 w, 328 ft, change xmtr location and antenna support. struc ht.
IN WORX-FM-96.7	Madison	increase to 551 ft, change xmtr location and antenna support. structure height
IA KGRA-98.9	Jefferson	change xmtr coordinates

FACILITIES/PARAMETERS: APPLICATIONS (cont'd) (& reapplication) [docket number]

KS KGZF(CP)-99.5	Emporia	change xmtr location
LA KPEL-FM-107.7	Erath	move to 107.9 C1, increase to 100000 w, 584 ft, change xmtr location
ME WOZI-101.7	Presque Isle	one step application to change to 101.9 C2
MI WIKB-FM-99.1	Iron River	one step application to change to class C1
WBYY-810	Rockford	increase to 3500 w days, make changes in antenna system
MN WBOB-FM-100.3	Minneapolis	install auxiliary antenna
MT KSCY-96.7	Belgrade	one step application to change to class C2
KRSQ-101.7	Laurel	decrease to 403 ft
NE KLRB-97.3	Aurora	one step application to change to class C1
KSDZ-95.5	Gordon	one step application to change to class C1
NV KDOL-1280	Henderson	increase to 48 w nights
OR KGZH(CP)-98.7	Nyssa	increase to 829 ft, change xmtr location
SC WLOW-106.9	Bluffton	modify CP to decrease to 799 ft, class C1, change xmtr location
TN WKCV-1090	Kingsport	direct measurement of antenna power
TX KRIO-FM-94.1	Floresville	increase to 25000 w
KXYZ-1320	Houston	direct measurement of antenna power
KCUL-FM-92.3	Marshall	increase to 5800 w
UT KKWZ-93.7	Richfield	modify CP to change to 41000 w, 2883 ft change xmtr location

FACILITIES/PARAMETERS: GRANTS

AL WGZS(CP)-700	Dothan	change xmtr location to 31-26-19 85-17-22, change main studio location, make changes in antenna system
WJIA(CP)-88.5*	Guntersville	increase to 426 ft, change xmtr location to 34-25-33 86-18-25
CO KVYT(CP)-106.1	Basalt	change to 2000 w, 364 ft, change xmtr location and antenna supporting structure height
CT WNEZ-910	New Britain	operate xmtr by remote control
FL WAVQ(CP)-104.3	Inglis	change xmtr location to 29-03-03 82-40-52
IA KBBG-88.1*	Waterloo	increase to 154 ft, change xmtr location to 42-30-45 92-19-24
KY WQXE-98.5	Elizabethtown	move to 98.3 MHz, increase to 13290 w, 449 ft, class C3, change xmtr location to 37-43-19 86-02-13
LA KOJO-91.7*	Lake Charles	change to 1850 w, 417 ft
MS WWZQ-FM-105.3	Aberdeen	one step application to change to class C2, increase to 27500 w
NM KEFE(CP)-107.5	Los Alamos	change to 25000 w, -121 ft, change xmtr location to 35-59-47 105-53-49, class C3
NC WNCU(CP)-90.7*	Durham	change xmtr location and antenna support. structure height
OK KXOO(CP)-94.3	Elk City	increase to 12200 w, 470 ft
KPNC-FM-100.9	Ponca City	increase to 6000 w, 272 ft
OR KLRP-102.3	Brownsville	modify CP to change to 95000 w (h), 40000 w (v), 987 ft
SC WMYB(CP)-99.5	Socastee	change to 13500 w, 446 ft, change xmtr location to 33-49-09 78-53-50
VT WGLY-FM-103.3	Waterbury	one step application to change to class C3, increase to 3000 w, 912 ft
VA WRXL-102.1	Richmond	use former main as auxiliary
WI WEMI-91.9*	Appleton	change to 3100 w, 328 ft
WLJU(CP)-106.9	Brookfield	increase to 6000 w, 328 ft
WKAU(CP)-103.1	Kaukauna	change to 3600 w, 879 ft, change xmtr location to 44-21-32 87-59-07

PROPOSED STATION TRANSFERS

(314 asset sale, 315 transfer of control, 316 reorganization)

AL WLAY-1450/105.5	Muscle Shoals	314 from Slatton-Quick Company, Inc. to D. Mitchell Self Broadcasting, Inc.
AR KABK-97.7	Augusta	316 from Harvey Fritts, receiver to KPIK Communications, Inc.
CA KVLI-1140/104.5	Lake Isabella	316 from KVLI, Inc. (J. & J. Ridenour) to KVLI, Inc. (J. & J. Ridenour trust)
CO KBCO-1190/97.3	Boulder	315 from Noble Broadcast of Colorado, Inc. to Noble Broadcast Licenses, Inc.
KHOW-630/ KHIH-95.7	Denver	315 from Noble Broadcast of Seattle, Inc. to Noble Broadcast Licenses, Inc.

PROPOSED STATION TRANSFERS (cont'd)

CT WHCN-105.9	Hartford	316 from WHCN, Inc. to WHCN-FM, Inc.
FL WQAM-560/ WKIS-99.9	Miami/ Boca Raton	316 from Sunshine Wireless Co. (Berlanti) to Sunshine Wireless Co. (Berlanti, trustee)
WHOO-990/ WHTQ-96.5	Orlando	315 in GCI Orange II, Inc. (Orange Holdings)
WYOO-101.3	Springfield	314 in Tideline Broadcasting, Inc.
GA WRDO-96.9	Fitzgerald	314 from Graylean Broadcasting Co. to M&M Broadcasting Co.
WHFX-103.3	Waycross	314 from Teletronics, Inc. to Rowland South Georgia Radio, Inc.
ID KBF1-1450	Bonnors Ferry	315 from Radio Bonnors Ferry (Sims/Howe) to Radio Bonnors Ferry (Benefield)
IL WABT-103.9	Dundee	314 from Atlantic Morris Broadcasting, Inc. to M & M Broadcasting, Inc.
IN WOCC-1550	Corydon	314 from Radio Corydon, Inc. to M.C. Communications, Inc.
IA KCFI-1250	Cedar Falls	314 from Cedar Valley Broadcasting, Inc. to Fife Communications Company, L.C.
KZME(CP)-96.1	Hudson	314 from Donald L. Rabbitt to 1077 Meadow Lane
MD WLSL(CP)-96.9	Crisfield	314 from Hoffman Broadcasting, Inc. to Bay Broadcasting
MA WSNE-93.3	Taunton	316 from WSNE, Inc. to WSNE-FM, Inc.
MI WAKX-96.1	Holland	314 from Holland Communications, Inc. to Michigan Radio, Inc.
MO KATZ-1600/ KMJM-107.7/KNJZ-100.3	St. Louis/Alton	316 from Noble Broadcast of St. Louis, Inc. to Noble Broadcast Licenses, Inc.
NV KNIS-91.3*	Carson City	316 from Western Insp. Bcstrs. (R. Long) to Western Insp. Bcstrs. (Balkenbush)
NJ WZVU-107.1	Long Branch	316 from K & K Radio Bcstg. LP (Old Board) to K & K Radio Bcstg. LP (New Board)
NM KPWX-107.5	Clovis	314 from Taber Communications Corp. to Ricochet Communications, Inc.
NY WBLI-106.1	Patchogue	316 from WBLI, Inc. to WBLI-FM, Inc.
NC WEZC-102.9/ WTDR-96.9	Hickory/ Statesville	314 from Trumper Comm. of NC, L.P. to SFX Broadcasting of North Carolina Lic.
OH WMVO-1300/ WQIO-93.7	Mount Vernon	314 from Zeeco, Inc. to KNOX Broadcasting Corp.
OR KXUX-940/ KXIX-94.1	Bend	316 from Oak Bcstg. (Stewart Bcstg. (Stewart)) to Oak Bcstg. (Stewart Bcstg. (S. Stewart))
KSJJ-102.9	Redmond	316 from Stewart Broadcasting (Stewart-Hyams) to Stewart Broadcasting (S. Stewart)
PA WVPO-840/ WSBG-93.5	Stroudsburg	314 from Commonwealth Bcstg. (Nassau Hold.) to Commonwealth Bcstg. (Nassau Partners)
PR WEKO-930	Cabo Rojo	315 from David Ortiz Radio Corp. (D. Ortiz) to David Ortiz Radio Corp. (M. Ortiz)
SC WORG-100.3	Elloree	314 from Clarence E. Jones to Jomar of Orangeburg, Inc.
TX KXGJ(CP)-101.7	Bay City	314 from Ammerman Enterprises, Inc. to Ron Latimer
KQXX-98.5	McAllen	316 from Bravo Broadcasting Company, Inc. to Edward Gomez
WY KCSP-90.3*	Casper	316 from Western Insp. Bcstrs. (R. Long) to Western Insp. Bcstrs. (Balkenbush)

DISMISSED STATION TRANSFERS

AK KMBQ-99.7	Wasilla (R)	315 from KMBQ Corp. (Alaska Bcst. Comms.) to KMBQ Corp. (Gary E. Buell, Sr.)
	(returned per fee section)	
CO KSKE-FM-104.7	Vail (Rescinded)	314 from Debbie Varecha, receiver to QMI KSKE, Inc.
HI KLHI-FM-101.1	Lahaina (D)	316 from Dale J. Parsons, Jr. to Howard R. Green, receiver
TX KNAL-1410	Victoria (D)	316 from Hombres Enterprises, Inc. to Victoria Broadcasters, Inc.

FM ALLOCATIONS: PROPOSED AMENDMENTS

NC new	Edenton	to 102.5 C1 from C2, comments due June 12, replies June 27
WERX-FM	Edenton	to 102.5 C1 Columbia from Edenton, comments due June 12 replies June 27
new	Pine Knoll Shores	to 105.9 A from 102.5 A, comments due June 12, replies June 27

FM ALLOCATIONS: GRANTED AMENDMENTS

IL new	Knoxville	add 105.3 A, window opens May 29, closes June 13
MT new	Billings	add 105.1 A, window opens May 29, closes June 13

WASHINGTON THIS WEEK

The Commission's grant of the sale of Secret Communications' WWNK-FM, Cincinnati gives Great American TV & Radio waiver of the one-to-a-market rule based on the case-by-case standard.

Great American demonstrated that joint operation of the stations will result in significant cost savings of over \$1,000,000 annually. It also showed that the proposed combination will enhance WWNK-FM's programming and result in public service benefits. The facilities involved are comparable to others in the market. Finally, because of the number of voices in the Cincinnati market, the proposed combo will not result in undue concentration of ownership of control.

When Atlantic Records launched their experimental radio station that broadcasts short segments of their new releases in New York City's Holland Tunnel on 1510 KHz, according to Commission rules, it's signal is only supposed to go out about 100 feet. Someone from Jersey City, NJ drove through recently and found the signal could be heard for at least two miles. When the FCC questioned the promotion department at the record company, they were told that the gas station where the transmitter was located gave them permission to broadcast. This didn't fly with the Commission, and the record company will adjust the transmitter power down to where it's supposed to be.

John Nakahata has been named by Commission Chairman Reed Hundt to serve as special assistant. Prior to coming to the FCC, Nakahata was the staff director of the Subcommittee on Regulation and Government Information, Senate Committee on Governmental Affairs.

ELSEWHERE

In the wake of the Oklahoma City bombing, Westwood's G. Gordon Liddy has taken a lot of flak (pardon the expression) for his views on guns and self-defense. News-talker WCKY, Cincinnati is letting the listeners decide whether or not to keep him through a telephone vote. According to the San Jose Mercury, KCKC, San Bernardino, CA dropped him immediately after the bombing stating, "It is our opinion that the views of G. Gordon Liddy foster and encourage extremist action."

Superadio is picking up the syndication effort for Walt Love's *Gospel Traxx* and *African Americans Making History Today*. *Gospel Traxx* is a two hour modern-gospel programming featuring contemporary and traditional gospel music. *African Americans Making History Today* is a short-form daily feature showcasing African Americans discussing their accomplishments and their effect on society. For more info, call Gary Burnstein at (508) 626-2000.

American University's WAMU, Washington, DC will be syndicating the Diane Rehm show to non-commercial stations soon. Rehm has been doing 10 am to noon weekdays on the station for 15 1/2 years. The Washington Post reports stations in Philadelphia, San Antonio, Memphis, and two stations in Oregon will broadcast the show.

A west coast based Christian music network discovered an effective fund-raising technique, but don't expect other listener-supported broadcasters to emulate it. Declining to run at a deficit in a critical time in the fiscal year, the K-Love Radio Network Board pulled the web off the air about noon (Pacific Time) on Tuesday, April 25. Some affils actually went dark. That's when the calls from loyal listeners started. Within 24 hours, 85% of the required funds were pledged, and the network was back in business.

ELSEWHERE (cont'd)

NPR's weekly half-hour program on the environment, Living on Earth, begins a five-part series examining the world's endangered food supply on June 2. "How Will We Eat?" examines shrinking agricultural resources, and asks where the food for the next generations will come from. For more info, call (202) 414-2313.

The Radio Advertising Bureau has selected the roster of final round judges for this year's Radio Mercury Awards competition. The winner will be awarded half of the \$200,000 in cash to be doled out for the best radio spots of the year June 14 at the Waldorf-Astoria Hotel in New York City. The list is a who's who of creative directors and executives at the nations biggest agencies including Bozell Worldwide, Saatchi & Saatchi, TBWA, DDB Needham Worldwide, DMB&B, and McCann-Erickson, Inc.

The Radio Advertising Bureau has added Michael Muthleb to the staff to handle the VP/Marketing position in RAB's Detroit office, with responsibility for the Midwest region. Muthleb, who joins the RAB from 13 years in sales at Sports Illustrated, will work with the advertising community in Detroit and other Midwestern markets to help national advertisers and their agencies use radio more effectively.

SW Networks has signed attorney Alan Dershowitz to a two hour weekly talk show to air Sundays from 7 pm to 9 pm. The show will focus on politics and controversial issues. For more info, call (212) 833-5400.

Ron Seggi's daily entertainment-oriented talk show is being picked up for syndication by the USA Radio Network. The show originates from Universal Studios Florida and features music, film, and television celebrities. USA is also handling affiliate and advertising sales for Royal Programs' Art Laboe Sunday Special, USA's first music syndication effort. The rhythmic CHR/oldies show airs six hours Sunday evenings. For more info, call (800) 829-8111.

Seems like SW Networks and ABC Radio are in a battle this week over how many people each can promote. It has promoted Paul Goldstein from Executive Producer to VP/Programming Development. Dan Forth moves over from his MediaStar International to SW's VP/Affiliate Marketing. SW Veteran Ron Schiller is upped to VP/Engineering and Technical Operations.

ABC Radio Networks has named Karen Akerstrom Director of Business Administration. Karen comes from Westwood One Affiliate Relations. Peter Acquaviva and Pamela Young have been hired as regional managers to handle affiliate marketing. Peter comes from the Sales department at WAKC-TV, Akron, OH. Pamela was with Delta Airlines for 18 years, most recently as Senior Sales Rep. in Milwaukee. She was also nominated for a Grammy for her work as lyricist for the song "Baby Come Close" by Smokey Robinson.

Ever wonder which markets are the most formatically volatile? Which are the most stable? We did a quick tally of the number of format changes by primary market since January 1, 1994 to date. Here's what we came up with:

<u>Market</u>	<u>Number of Changes</u>
Albuquerque	13
Monterey-Salinas-Santa Cruz	12
San Francisco	10
Houston-Galveston	10
Honolulu	10
Youngstown-Warren	10
Seattle-Tacoma	9
Minneapolis-St. Paul	9
Riverside-San Bernardino	9
Greenville-Spartanburg, SC	9
Corpus Christi	9
Los Angeles	8
Chicago	8
Miami-Ft. Lauderdale-Hollywood	8
New Orleans	8
Grand Rapids	8
Bakersfield	8
Jackson, MS	8
Utica-Rome	8

The M Street Journal

Radio's Journal of Record

304 Park Ave. S., 7th Floor, New York, NY 10010 PHONE (212) 473-4668 FAX (212) 473-4626

EIA SOLVES AGE OLD CHICKEN AND EGG PROBLEM WITH GIFT OF ENCODERS. Here's a story with a lot of subtext: By the time you read this, the Electronic Industries Association will have announced a national program to equip 500 FM stations in the top 25 markets with Radio Broadcast Data Systems (RBDS) encoders over the next year. Philadelphia has been chosen as the test site for the campaign which will give stations RBDS software, hardware, and training at no cost. 240 stations already carry RBDS info. In addition, Arbitron has announced that it will add its research services to CouponRadio's RBDS technology test in the Miami market during the first quarter of '96. The six month test is being done in conjunction with Interep Radio Store.

GOLDBLOCKS AND THE THREE URBANS. One's so hard, one is too old and one may just right, that's what WBLs, New York is hoping. The 1993 move by WBLs from an almost urban AC approach to young-end urban still has a lot of industryites shaking their heads, but WBLs now says it will head back toward urban AC, following the departure of PD Quincy McCoy. WBLs got a lot of attention recently for attacking--although not by name--urban AC rival WRKS (Kiss 98.7) as "the plantation station" in an apparent reference to its non-ethnic ownership. The alleged plantation station is, this week, teaming up with famed New York moderate, the Rev. Al Sharpton for a march on City Hall to commemorate the King assassination.

FORMAT CHANGES & UPDATES	(# change accompanies new ownership)	(// simulcast)	formerly	becomes
AL Montgomery	WSYA-950	#	adult standards	WNZZ, AP - news, talk
AZ Kachina Village (Flag)	KFLX-105.1		silent	adult contemporary
	(KFLX is a duopoly with country KSED)			
AR Little Rock	KSYG-1010	#	news, talk	will go silent (Aug.)
	(KSYG will be sold to Group W to add coverage to WINS in New York)			
CO Loveland (Ft. Collins)	KLOV-1570		oldies	AP - news, talk
FL Melbourne	WFIT-89.5*		jazz, alternative	NPR - info, jazz
Rockledge (Titusville)	WHKR-102.7		country	adds After Midnight
GA Savannah	WCHY-FM-94.1		country	adds After Midnight
IL Eureka	WIVR-98.5	#	WW1 - soft AC	WW1 - oldies
IA Des Moines	KKSO-1390		country // FM	CSN - children's
KS Kansas City	KPKF-FM-94.1		country	adds After Midnight
KY Danville	WMGE-107.1		country	adds SMN Real - CW
ME Bath (Portland)	WKRH-105.9	#	classic rock	silent
	(WKRH will return as WBCI-FM, the format will be religion in May)			
MO Boonville	KWRT-1370		CW-talk-standards	country
Ozark (Springfield)	KZPF-92.9		new	BCN - country
	(KZPF is in an LMA with the owner of the Branson Music Network)			
NE Fremont (Omaha)	KHUB-1340		adult standards	talk
Lincoln	KEZG-107.3		WW1 - soft AC	WW1 - adult contemp.
NY New York	WBLs-107.5		urban	urban AC
ND Kindred (Fargo)	KSSZ-FM-92.7	#	CHR	to be Contemp. Christ.
	(With sale KSSZ becomes KPHT "Power 92")			
OH Bellaire (Wheeling)	WOMP-FM-100.5		CHR // WRKY	CHR "The New Womp"
Springfield (Dayton)	WAZU-102.9		classic rock	WING-FM, classic hits
OR Coos Bay	KDCQ-93.5		new	SMN - oldies
Eagle Point	KZZE-106.3		new	rock
	(This corrects last week's issue)			
PR Bayamon (San Juan)	WRSJ-1560		Spanish easy list.	AP - news
SC Conway (Myrtle Beach)	WJXY-FM-93.9		country	adds ABC - Moby

Sample Vol. 12 No. 23

ROBERT UNMACHT and PAT McCRUMMEN, Publishers
BILL DAVIES, Associate Editor BLAKE FITCH, Administrative Assistant
GERALD ASCHE, Data Services Director

Copyright 1995 M Street Corporation. All rights reserved. No portion of The M Street Journal may be copied, faxed, retransmitted, or reproduced in any form without the written permission of the publishers. All efforts are made to keep the data as accurate as possible. However, errors and omissions are unavoidable. Formats of stations listed reflect the analysis and groupings of M Street Corp. and may differ from the station's opinion or interpretation. ISSN 1052-7109
The M Street Journal is published weekly except the last week of December. Subscriptions are available for \$119 per year, which includes a copy of the annual M Street Radio Directory. Subscriptions are also available for \$36 per quarter. The directory is available separately for \$44.00 (price includes shipping).

FORMAT CHANGES & UPDATES (cont'd)

TX Corpus Christi	KSIX-1230	news	news & standards
	(AP news for one half hour, then	adult standards for a half hour)	
Pampa	KGRO-1230	adult contemporary	adds JSN - AC
Plainview	KKYN-FM-103.9	country	adds After Midnight
VA Alexandria (D.C.)	WCPT-730	all news	WBZS, business news
WA Everett	KRKO-1380	talk	adds Doug Stephan
WI Oshkosh	WVCY-690*	# silent	religion // WVCY-FM
WY Gillette	KGWY-100.7	country	adds After Midnight

NEW STATIONS: APPLICATIONS

(* non-commercial station) (& reapplication)
(+ competes with existing application)

CA 100.1	Ludlow	25000 w, -216 ft	KHWY (California), L.P.
CO 88.1*	Pueblo	42000 w (v), 131 ft	Colorado Christian University
FL 89.3*	Dinsmore	1000 w (v), 247 ft	Ocala Radio Ministries, Inc.
91.1*	Flagler Beach	3000 w, 313 ft	Ocala Radio Ministries, Inc.
KS 101.9	Hill City	100000 w, 810 ft	Radio, Inc.
MS 88.9*	Pascagoula	27500 w, 344 ft	Judah Broadcasting Network, Inc.
NM 90.5*	Bernalillo	127 w, 3880 ft	Family Stations, Inc.
107.1	Jal	100000 w, 371 ft	John H. Wiggins
OH 88.1*	Spencerville	2600 w, 492 ft	Taylor University, Inc.
PA 88.1*	New Berlin	550 w, 417 ft	Montrose Broadcasting Corp.
TX 96.1	Edna	12800 w, 456 ft	Hill Country Radio, Inc.
90.7*	San Perlita	117 w, 167 ft	Faith Pleases God Church Corp.

Returned/Dismissed Applications

FL 1370	Henderson (R)
MP 101.1	Garapan, Saipan (D)
OR 670	Woodburn (R)
PR 106.5+	Culebra (D)
106.5+	Culebra (D)

George M. Arroyo
Inter-Island Communications
94 Country, Inc.
Lloyd Santiago-Santos
Lourdes Rodriguez Bonet

NEW STATIONS: ACCEPTED FOR FILING

AR 90.5*	Jonesboro	4-20-95	American Family Association
HI 90.1*	Lihue	4-20-95	Hawaii Public Radio
IL 88.5*	Danville	4-20-95	Creative Flair Communications
IA 89.7*	Ottumwa	4-20-95	Grassroots Broadcasting Co.
MS 88.9*	Pascagoula	4-20-95	American Family Association
NC 91.5*	Atlantic Beach	4-20-95	Craven Community College
OR 91.1*	Grants Pass	4-20-95	American Family Association
SC 88.9*	North Myrtle Beach	4-20-95	Covenant Educational Fellow.

NEW STATIONS: GRANTS

MO 90.1*	Springfield	6000 w, 328 ft	American Family Association
MT 88.9*	Great Falls	6000 w, 243 ft	Hi-Line Radio Fellowship, Inc.
PA 90.1*	New Castle	2000 w, 236 ft	Moody Bible Inst. of Chicago
PR 106.5	Culebra	6000 w, 663 ft	Aurio A. Matos

TRANSLATORS/BOOSTERS/SYNCHRONOUS XMTR: APPLICATIONS

CA new-98.1	Concord	186 w, KBGG	Shamrock Broadcasting
new-91.7*	Newcastle	250 w, KCJH	Stockton Christian Life
CO new-100.7	Battlement Mesa	125 w, KJYE-FM	MBC Grand Broadcasting
FL new-97.7	Tallahassee	13 w, WAFT	Temple Baptist Church
new-101.9*	West Palm Beach	19 w, WMCU	Trinity Evangelical Div.
KS new-99.5*	Hutchinson	250 w, KYFW	Bible Broadcasting Net.
ME new-101.9	Machias	48 w, WQDY-FM	Mainecasters, Inc.
MS new-105.5*	Vicksburg	38 w, KYFL	Bible Broadcasting Net.
MO new-96.3*	Lebanon	250 w, KUMR	Univ. of Missouri
NM new-100.7	Taos	250 w, KAFR	Moreno Valley Bcstg.
PA new-91.9*	Grove City	38 w, WAFT	American Family Assn.
TX new-99.1*	Waco	205 w, KERA	N. Texas Public Bcstrs.
NEW-89.1*	Weslaco	197 w, KEPI	World Radio Network
VA new-98.7*	Farmville	10 w (v), WJYJ	Educational Media Corp.
new-96.5*	Flint Hill	10 w (v), WJYJ	Educational Media Corp.
new-103.5*	Virginia Beach	10 w (v), WJYJ	Educational Media Corp.
WI new-101.3*	Port Washington	13 w, WFFF	Family Ed. Bcstg.

TRANSLATORS/BOOSTERS/SYNCHRONOUS XMTR:

AZ K206BL-89.1* Dreamland
 AR K244DS-96.7 Fayetteville
 W205CN-88.9* Rogers
 CA K262AD-100.3* Bakersfield
 FL W251AF-98.1* Naples
 GA W207AW-89.3* Cuthbert
 KS K217CH-91.3* Arkansas City
 MN K231AC-95.7 New Ulm
 MS W236AC-95.1* Greenville
 NM K291AD-106.1* Des Moines
 OK K216CZ-91.1* Calva
 OR K283AE-98.3 Cave Junction
 K231AB-94.1* Turner
 PA W297AD-107.3* Philadelphia
 TX K277AG-103.3 Beaumont
 WI W271AC-102.1* Appleton/Menasha
 WY K224CI-92.7* Lyman

GRANTS

10 w, WAFR American Family Assn.
 115 w, KREB Vekony Communications
 250 w, WAFR American Family Assn.
 180 w, KDUV Community Ed. Bcstg.
 226 w, WSEB Suncoast Educ. Bcstg.
 38 w, WAFR American Family Assn.
 250 w, WAFR American Family Assn.
 70 w, KJLY New Ulm Christian Radio
 80 w, KYFL Bible Broadcasting Net.
 116 w (h), KENW-FM Eastern New Mexico Univ.
 250 w, WAFR American Family Assn.
 11 w, KLDR Grants Pass Bcstg. Corp
 34 w, KWAX State of Oregon
 10 w, WRDV Bux-Mont Ed. Radio Assoc.
 250 w, KRQT Patrick Parks
 38 w, WPFM Family Ed. Bcstg. Corp.
 19 w (v), KCSP Western Insp. Bcstrs.

CONSTRUCTION PERMIT ACTIVITY

AL WSTH-FM-106.1 Alexander City
 WFFX-95.7 Tuscaloosa
 AZ KSAZ-580 Marana
 AR KOLZ-98.3 Bentonville
 KDEZ-100.3 Jonesboro
 CA KAFN(CP)-94.5 Hanford
 KOYZ(CP)-104.9 Lemoore
 KNZS(CP)-880 Mecomito
 KSQQ-96.1 Morgan Hill
 KSSJ-101.9 Shingle Springs
 KUKI-FM-103.3 Ukiah
 CO KPWW(CP)-107.1 Aspen
 KVYT(CP)-106.1 Basalt
 FL WYNF-107.9 Coral Cove
 WTPS(CP)-100.7 Quincy
 WGNE-FM-98.1 Titusville
 WLOQ-103.1 Winter Park
 ID KUOI-FM-89.3* Moscow
 IN WZBD-92.7 Berne
 WKHY-93.5 Lafayette
 WTHC(CP)-95.9 Seelyville
 WZDM-92.1 Vincennes
 KY WCKQ-104.1 Campbellsville
 MI WZRK-93.5 Hancock
 MN KYCR-1570 Golden Valley
 MO KUNQ-99.3 Houston
 NE KISP-106.3 Blair
 NV KRNC(CP)-89.5* Reno
 KZTY(CP)-620 Winchester
 NH WRCI-107.7 Hillsboro
 WLKZ-104.9 Wolfeboro
 NJ WNNJ-1360 Newton

changes to 35800 w, 1047 ft, changes
 xmtr location to 32-45-30 85-28-20
 increases to 981 ft, changes xmtr loc.
 to 33-05-38 87-15-15
 granted extension of time to decrease
 to 320 w nights, DA-N
 cancelled CP to increase to 10550 w,
 499 ft, class C3, [91-124]
 requests extension of time to move to
 100.5 MHz, increase to 50000 w, 403 ft
 requests extension of time
 requests extension of time (2nd)
 granted reinstatement of expired (CP)
 changes to 4700 w, 161 ft, changes xmtr
 location to 37-11-01 121-48-09
 requests extension of time (2nd) to
 increase to 44000 w, 521 ft
 granted extension of time (2nd) to
 increase to 2700 w, 1837 ft
 requests petition for reconsideration
 of cancellation of CP
 granted replacement of expired CP (2nd)
 license to cover for new station
 granted extension of time (2nd)
 increases to 100000 w, 476 ft, class C1
 removes DA
 increases to 400 w (v)
 increases to 4100 w
 changes to 6000 w, 216 ft
 requests extension of time
 increases to 4100 w
 increases to 17000 w, 394 ft, DA,
 class C3
 increases to 13500 w, 456 ft, class C3,
 changes xmtr loc to 47-06-06 88-34-11
 amends application to delete request to
 change city of lic. to St. Louis Park
 requests extension of time (3rd) to
 change to 33400 w, 604 ft
 requests extension of time to move to
 101.5 MHz, increase to 25000 w, 301 ft
 requests petition for reconsideration
 of cancellation of CP
 granted extension of time
 changes to 580 w, 738 ft, changes xmtr
 location to 43-09-00 71-47-56
 changes to 280 w, 1053 ft, changes xmtr
 location to 43-32-44 71-22-45
 requests extension of time to increase
 to 2000 w days, 320 w nights, DA-2

CONSTRUCTION PERMIT ACTIVITY (cont'd)

NM	KYRK(CP)-100.9	Eunice	requests petition for reconsideration of cancellation of CP license to cover for new station
	KYRK-100.9	Eunice	(This station was cancelled in April, but has filed a pet for recon.)
	KEFE(CP)-107.5	Los Alamos	requests extension of time
NY	WGFR-92.1*	Glens Falls	moves to 92.7 MHz, changes to 13 w (h), 49 ft
	WCFE-FM-91.9*	Plattsburgh	requests extension of time to move to 89.7 MHz, change to 190 w, 2204 ft
NC	WECR(CP)-102.3	Beech Mountain	granted extension of time
	WXQR-105.5	Jacksonville	granted extension of time to move to 105.3 MHz, increase to 19000 w, 794 ft
OH	WNUS-107.1	Belpre	granted extension of time (4th) to change to 4700 w, 351 ft
	WKSX-101.7	Urbana	increases to 407 ft
OK	KXOO(CP)-94.3	Elk City	granted extension of time to increase to 12200 w, 470 ft
PA	WHPN(CP)-88.1*	Harrisburg	granted extension of time (2nd)
SC	WRLQ(CP)-106.3	Ladson	requests extension of time
SD	KAEN(CP)-89.5*	Little Eagle	requests extension of time
TN	WLJQ(CP)-105.9	Colonial Heights	granted extension of time (2nd)
	WRMX-96.3	Murfreesboro	requests extension of time to change to 53000 w, 1273 ft
	WJBZ-96.3	Seymour	increases to 2900 w
	WFRQ-94.9	Waynesboro	increases to 6800 w, 622 ft, changes xmtr location to 35-08-16 87-49-43
TX	KRJT-FM-100.7	Bowie	requests extension of time to change to 6250 w, 435 ft
	KBYG(CP)FM-105.5	Coahoma	requests extension of time
	KELG-1440	Elgin	granted reinstatement of expired CP to increase to 800 w days, change city of license to Manor, TX
	KQXX-98.5	McAllen	decreases to 997 ft, changes xmtr location to 26-07-14 97-49-18
UT	KKWZ-93.7	Richfield	requests extension of time (6th) to increase to 33720 w, 3029 ft
VA	WREL-FM-96.7	Buena Vista	granted extension of time to increase to 10000 w, 492 ft
	WSVY-FM-107.7	Windsor	increases to 5200 w, 351 ft, DA, change xmtr location to 36-51-35 76-35-59
WA	KJUN(CP)FM-104.9	Eatonville	requests extension of time
	KRCW(CP)-96.3	Royal City	granted replacement of expired CP (2nd)
WI	WLJU(CP)-106.9	Brookfield	granted extension of time
	WJLW-95.9	De Pere	requests extension of time (3rd) to increase to 25000 w, 272 ft
	WMSE-91.7*	Milwaukee	increases to 3200 w, 128 ft, changes xmtr location to 43-2-44 87-54-28
WY	KKNG(CP)-104.5	Laramie	requests extension of time (3rd)

FACILITIES/PARAMETERS: APPLICATIONS

AL	WTXQ-1400	Andalusia	(& reapplication) [docket number] change xmtr loc. to 31-17-19 66-28-59
	WSHK-97.7	Russellville	install auxiliary antenna system
AR	KWRF-860	Warren	increase to 1000 w
CA	KPAY-1060	Chico	operate xmtr by remote control
	KALF-95.7	Red Bluff	correct coords. to 39-55-02 122-40-10
	KYCY-93.3	San Francisco	change to 44600 w, 518 ft
	KAGA(CP)-105.9	Santa Ynez	change to 94 w, 2463 ft, chg xmtr loc.
CO	KHNC-1360	Johnstown	increase to 5000 w days, 690 w nights, make changes in antenna system
	KRGS-810	Rifle	move to 690 KHz, decrease to 970 w days 12.5 w nights
CT	WXZR-98.7	East Lyme	modify CP to increase to 279 ft, change xmtr location
FL	WOTS-1220	Kissimmee	increase to 110 w nights
	WVIJ-91.7*	Port Charlotte	increase to 2000 w, change xmtr location
	WLWJ-640*	Royal Palm Beach	direct measurement of antenna power
GA	WSGF-103.9	Springfield	increase to 6000 w, 328 ft, change xmtr location and antenna support. struc ht.
IN	WORX-FM-96.7	Madison	increase to 551 ft, change xmtr location and antenna support. structure height
IA	KGRA-98.9	Jefferson	change xmtr coordinates

FACILITIES/PARAMETERS: APPLICATIONS (cont'd) (& reapplication) [docket number]

KS KGZF(CP)-99.5	Emporia	change xmtr location
LA KPEL-FM-107.7	Erath	move to 107.9 C1, increase to 100000 w, 584 ft, change xmtr location
ME WOZI-101.7	Presque Isle	one step application to change to 101.9 C2
MI WIKB-FM-99.1	Iron River	one step application to change to class C1
WBYY-810	Rockford	increase to 3500 w days, make changes in antenna system
MN WBOB-FM-100.3	Minneapolis	install auxiliary antenna
MT KSCY-96.7	Belgrade	one step application to change to class C2
KRSQ-101.7	Laurel	decrease to 403 ft
NE KLRB-97.3	Aurora	one step application to change to class C1
KSDZ-95.5	Gordon	one step application to change to class C1
NV KDOL-1280	Henderson	increase to 48 w nights
OR KGZH(CP)-98.7	Nyssa	increase to 829 ft, change xmtr location
SC WLOW-106.9	Bluffton	modify CP to decrease to 799 ft, class C1, change xmtr location
TN WKCV-1090	Kingsport	direct measurement of antenna power
TX KRIO-FM-94.1	Floresville	increase to 25000 w
KXYZ-1320	Houston	direct measurement of antenna power
KCUL-FM-92.3	Marshall	increase to 5800 w
UT KKWZ-93.7	Richfield	modify CP to change to 41000 w, 2883 ft change xmtr location

Returned/Dismissed Applications

ME WSEW-88.5*	Sanford (Denied)	relocate main studio outside principal community
NC WPIP(CP)-880	Winston-Salem (D)	make changes in antenna system

FACILITIES/PARAMETERS: GRANTS

AL WGZS(CP)-700	Dothan	change xmtr location to 31-26-19 85-17-22, change main studio location, make changes in antenna system
WJIA(CP)-88.5*	Guntersville	increase to 426 ft, change xmtr location to 34-25-33 86-18-25
FL WAVQ(CP)-104.3	Inglis	change xmtr location to 29-03-03 82-40-52
IA KBBG-88.1*	Waterloo	increase to 154 ft, change xmtr location to 42-30-45 92-19-24
KY WQXE-98.5	Elizabethtown	move to 98.3 MHz, increase to 13290 w, 449 ft, class C3, change xmtr location to 37-43-19 86-02-13
LA KOJO-91.7*	Lake Charles	change to 1850 w, 417 ft
OK KXOO(CP)-94.3	Elk City	increase to 12200 w, 470 ft
KPNC-FM-100.9	Ponca City	increase to 6000 w, 272 ft
OR KLRP-102.3	Brownsville	modify CP to change to 95000 w (h), 40000 w (v), 987 ft
VT WGLY-FM-103.3	Waterbury	one step application to change to class C3, increase to 3000 w, 912 ft

CALL LETTER CHANGES (# applied for by new owners)

AK KANH(CP)-90.3*	Anchorage	becomes	KNBA	4-7-95	
AZ KJYK-1490	Tucson		KMXZ	4-5-95	
AR KJEM-1190	Bentonville		KESE	4-7-95	
KUKB(CP)-106.3	Texarkana		KYGL	4-7-95	
CA KXHA-104.3	Shafter		KLYD	4-8-95	
CO KYBG-FM-92.1	Castle Rock		KNRX	4-10-95	"92-X"
FL WWUA(CP)-90.1*	Inverness		WJUF	4-14-95	
WOMX-950	Orlando		# WZKD	4-7-95	
GA WQQT-103.9	Springfield		WSGF	4-7-95	
IL WZLZ-103.9	Quincy		# WMOS	3-31-95	"The Moose"
WDND-105.5	Wilmington		# WYKT	4-10-95	"Cat"
KS new-95.7	Sterling		KGGG	4-5-95	
MI WBTZ-100.9	Pinconning		# WMJK	4-8-95	"Magic"
WUVE-104.5	Saginaw		WMJA	4-8-95	"Magic"
MS WHSY-FM-104.5	Hattiesburg		# WXRR	4-10-95	
MO KESE-93.3	Seligman		KJEM	4-7-95	
NY WXEJ(CP)-100.5	Conklin		WMTT	4-14-95	"The Met"
new-103.9	Mexico		WUPN	4-14-95	
WKOJ-92.7	Middletown		WRRV	4-6-95	
WXTM-99.7	Monticello		WJUX	4-14-95	"Jukebox"
VA WGTH-105.5	Richlands		WGTH-FM	4-5-95	
WRIC-540	Richlands		# WGTH	4-5-95	
WA new-95.1	Winlock		KITI-FM	4-12-95	

New call letters not used (station retains old call letters)
 ND KQHK-1550 West Fargo remains KQWB

PROPOSED STATION TRANSFERS

(314 asset sale, 315 transfer of control, 316 reorganization)

AL WLAY-1450/105.5	Muscle Shoals	314	from Slatton-Quick Company, Inc. to D. Mitchell Self Broadcasting, Inc.
AR KABK-97.7	Augusta	316	from Harvey Fritts, receiver to KPIK Communications, Inc.
CT WHCN-105.9	Hartford	316	from WHCN, Inc. to WHCN-FM, Inc.
FL WQAM-560/ WKIS-99.9	Miami/ Boca Raton	316	from Sunshine Wireless Co. (Berlanti) to Sunshine Wireless Co. (Berlanti, trustee)
WHOO-990/ WHTQ-96.5	Orlando	315	in GCI Orange II, Inc. (Orange Holdings)
WYOO-101.3	Springfield	314	in Tideline Broadcasting, Inc.
GA WRDO-96.9	Fitzgerald	314	from Graylean Broadcasting Co. to M&M Broadcasting Co.
WHFX-103.3	Waycross	314	from Teletronics, Inc. to Rowland South Georgia Radio, Inc.
ID KBFI-1450	Bonnors Ferry	315	from Radio Bonnors Ferry (Sims/Howe) to Radio Bonnors Ferry (Benefield)
IL WABT-103.9	Dundee	314	from Atlantic Morris Broadcasting, Inc. to M & M Broadcasting, Inc.
IN WOCC-1550	Corydon	314	from Radio Corydon, Inc. to M.C. Communications, Inc.
IA KCFI-1250	Cedar Falls	314	from Cedar Valley Broadcasting, Inc. to Fife Communications Company, L.C.
KZME(CP)-96.1	Hudson	314	from Donald L. Rabbitt to 1077 Meadow Lane
MD WLSL(CP)-96.9	Crisfield	314	from Hoffman Broadcasting, Inc. to Bay Broadcasting
MA WSNE-93.3	Taunton	316	from WSNE, Inc. to WSNE-FM, Inc.
MI WAKX-96.1	Holland	314	from Holland Communications, Inc. to Michigan Radio, Inc.
MO KATZ-1600/ KMJM-107.7/KNJZ-100.3	St. Louis/Alton	316	from Noble Broadcast of St. Louis, Inc. to Noble Broadcast Licenses, Inc.
NM KPWX-107.5	Clovis	314	from Taber Communications Corp. to Ricochet Communications, Inc.
NY WBLI-106.1	Patchogue	316	from WBLI, Inc. to WBLI-FM, Inc.
NC WEZC-102.9/ WTDR-96.9	Hickory/ Statesville	314	from Trumper Comm. of NC, L.P. to SFX Broadcasting of North Carolina Lic.
OH WMVO-1300/ WQIO-93.7	Mount Vernon	314	from Zeeco, Inc. to KNOX Broadcasting Corp.
OR KXUX-940/ KXIX-94.1	Bend	316	from Oak Bcstg. (Stewart Bcstg. (Stewart)) to Oak Bcstg. (Stewart Bcstg. (S. Stewart))
KSJJ-102.9	Redmond	316	from Stewart Broadcasting (Stewart-Hyams) to Stewart Broadcasting (S. Stewart)
SC WORG-100.3	Elloree	314	from Clarence E. Jones to Jomar of Orangeburg, Inc.
WY KCSP-90.3*	Casper	316	from Western Insp. Bcstrs. (R. Long) to Western Insp. Bcstrs. (Balkenbush)

DISMISSED STATION TRANSFERS

AK KMBQ-99.7	Wasilla (R)	315	from KMBQ Corp. (Alaska Bcst. Comms.) to KMBQ Corp. (Gary E. Buell, Sr.)
CO KSKE-FM-104.7	Vail (Rescinded)	314	(returned per fee section) from Debbie Varecha, receiver to QMI KSKE, Inc.
TX KNAL-1410	Victoria (D)	316	from Hombres Enterprises, Inc. to Victoria Broadcasters, Inc.

FM ALLOCATIONS: PROPOSED AMENDMENTS

NC new	Edenton	to 102.5 C1 from C2, comments due June 12, replies June 27
WERX-FM	Edenton	to 102.5 C1 Columbia from Edenton, comments due June 12 replies June 27
new	Pine Knoll Shores	to 105.9 A from 102.5 A, comments due June 12, replies June 27

FM ALLOCATIONS: GRANTED AMENDMENTS

IL new	Knoxville	add 105.3 A, window opens May 29, closes June 13
MT new	Billings	add 105.1 A, window opens May 29, closes June 13

WASHINGTON THIS WEEK

The Commission granted the transfer assignment of Secret Communication's WWNK-FM, Cincinnati to Great American TV & Radio and the related request for waiver of the one-to-a-market rule. Great American is the current licensee of WKRC-TV, both Cincinnati. The Commission granted the sale on the "case-by-case" standard since the Cincinnati market is not a top 25 market and neither of the stations involved is a failed station.

Great American demonstrated that joint operation of the stations will result in significant cost savings of over \$1,000,000 annually. It also showed that the proposed combination will enhance WWNK-FM's programming and result in public service benefits. The facilities involved are comparable to others in the market. Finally, because of the number of voices in the Cincinnati market, the proposed combo will not result in undue concentration of ownership of control.

When Atlantic Records launched their experimental radio station that broadcasts short segments of their new releases in New York City's Holland Tunnel on 1510 KHz, according to Commission rules, it's signal is only supposed to go out about 100 feet. Someone from Jersey City, NJ drove through recently and found the signal could be heard for at least two miles. When the FCC questioned the promotion department at the record company, they were told that the gas station where the transmitter was located gave them permission to broadcast. This didn't fly with the Commission, and the record company will adjust the transmitter power down to where it's supposed to be.

John Nakahata has been named by Commission Chairman Reed Hundt to serve as special assistant. Prior to coming to the FCC, Nakahata was the staff director of the Subcommittee on Regulation and Government Information, Senate Committee on Governmental Affairs.

ELSEWHERE

In the wake of the Oklahoma City bombing, Westwood's G. Gordon Liddy has taken a lot of flak (pardon the expression) for his views on guns and self-defense. News-talker WCKY, Cincinnati is letting the listeners decide whether or not to keep him through a telephone vote. According to the San Jose Mercury, KCKC, San Bernardino, CA dropped him immediately after the bombing stating, "It is our opinion that the views of G. Gordon Liddy foster and encourage extremist action."

Superadio is picking up the syndication effort for Walt Love's *Gospel Traxx* and *African Americans Making History Today*. *Gospel Traxx* is a two hour modern-gospel programming featuring contemporary and traditional gospel music. *African Americans Making History Today* is a short-form daily feature showcasing African Americans discussing their accomplishments and their effect on society. For more info, call Gary Burnstein at (508) 626-2000.

American University's WAMU, Washington, DC will be syndicating the Diane Rehm show to non-commercial stations soon. Rehm has been doing 10 am to noon weekdays on the station for 15 1/2 years. The Washington Post reports stations in Philadelphia, San Antonio, Memphis, and two stations in Oregon will broadcast the show.

A west coast based Christian music network discovered an effective fund-raising technique, but don't expect other listener-supported broadcasters to emulate it. Declining to run at a deficit in a critical time in the fiscal year, the K-Love Radio Network Board pulled the web off the air about noon (Pacific Time) on Tuesday, April 25. Some affils actually went dark. That's when the calls from loyal listeners started. Within 24 hours, 85% of the required funds were pledged, and the network was back in business.

ELSEWHERE (cont'd)

NPR's weekly half-hour program on the environment, Living on Earth, begins a five-part series examining the world's endangered food supply on June 2. "How Will We Eat?" examines shrinking agricultural resources, and asks where the food for the next generations will come from. For more info, call (202) 414-2313.

The Radio Advertising Bureau has selected the roster of final round judges for this year's Radio Mercury Awards competition. The winner will be awarded half of the \$200,000 in cash to be doled out for the best radio spots of the year June 14 at the Waldorf-Astoria Hotel in New York City. The list is a who's who of creative directors and executives at the nations biggest agencies including Bozell Worldwide, Saatchi & Saatchi, TBWA, DDB Needham Worldwide, DMB&B, and McCann-Erickson, Inc.

The Radio Advertising Bureau has added Michael Muthleb to the staff to handle the VP/Marketing position in RAB's Detroit office, with responsibility for the Midwest region. Muthleb, who joins the RAB from 13 years in sales at Sports Illustrated, will work with the advertising community in Detroit and other Midwestern markets to help national advertisers and their agencies use radio more effectively.

SW Networks has signed attorney Alan Dershowitz to a two hour weekly talk show to air Sundays from 7 pm to 9 pm. The show will focus on politics and controversial issues. For more info, call (212) 833-5400.

Ron Seggi's daily entertainment-oriented talk show is being picked up for syndication by the USA Radio Network. The show originates from Universal Studios Florida and features music, film, and television celebrities. USA is also handling affiliate and advertising sales for Royal Programs' Art Laboe Sunday Special, USA's first music syndication effort. The rhythmic CHR/oldies show airs six hours Sunday evenings. For more info, call (800) 829-8111.

Seems like SW Networks and ABC Radio are in a battle this week over how many people each can promote. It has promoted Paul Goldstein from Executive Producer to VP/Programming Development. Dan Forth moves over from his MediaStar International to SW's VP/Affiliate Marketing. SW Veteran Ron Schiller is upped to VP/Engineering and Technical Operations.

ABC Radio Networks has named Karen Akerstrom Director of Business Administration. Karen comes from Westwood One Affiliate Relations. Peter Acquaviva and Pamela Young have been hired as regional managers to handle affiliate marketing. Peter comes from the Sales department at WAKC-TV, Akron, OH. Pamela was with Delta Airlines for 18 years, most recently as Senior Sales Rep. in Milwaukee. She was also nominated for a Grammy for her work as lyricist for the song "Baby Come Close" by Smokey Robinson.

Ever wonder which markets are the most formatically volatile? Which are the most stable? We did a quick tally of the number of format changes by primary market since January 1, 1994 to date. Here's what we came up with:

<u>Market</u>	<u>Number of Changes</u>
Albuquerque	13
Monterey-Salinas-Santa Cruz	12
San Francisco	10
Houston-Galveston	10
Honolulu	10
Youngstown-Warren	10
Seattle-Tacoma	9
Minneapolis-St. Paul	9
Riverside-San Bernardino	9
Greenville-Spartanburg, SC	9
Corpus Christi	9
Los Angeles	8
Chicago	8
Miami-Ft. Lauderdale-Hollywood	8
New Orleans	8
Grand Rapids	8
Bakersfield	8
Jackson, MS	8
Utica-Rome	8

The M Street Radio Directory



A Complete Guide to U.S. and Canadian Radio Stations

MARKETS

Colorado Springs

NBT max 113		ARB max 107		METRO 358,500		TSA 581,600		
Freq.	Call	City of License	Format	Share	Per.	W94	FM3	933
740	KTWK	Colorado Springs, CO	TKA				.4	.3
820	KVFR	Falcon, CO	cp-new					
850	KOA	Denver, CO	NX-TK	3.7	2100	4.2	4.1	4.5
1040	KCBR	Monument, CO	RL				.4	
1240	KRDO	Colorado Springs, CO	SX-TKA	1.2	700	.9	.7	.9
1300	KVOR	Colorado Springs, CO	NX-TK	6.5	3700	5.7	7.5	5.5
1480	KKCS	Colorado Springs, CO	CWA	.5	300	.5	.7	1.2
1480	KQRE	Manitou Springs, CO	SSe					
1530	KCMN	Colorado Springs, CO	ASA	1.4	800	1.4	2.1	2.4
1580	KWYD	Colorado Springs, CO	RL				.5	
88.7	KCME	Manitou Springs, CO	FA/JZ*					
89.7	KEPC	Colorado Springs, CO	AP*					
90.5	KTLF	Colorado Springs, CO	VA*					
91.5	KRCC	Colorado Springs, CO	NX/VA*					
92.9	KSPZ	Colorado Springs, CO	OL	7.4	4200	9.4	7.1	7.2
94.3	KILO	Colorado Springs, CO	AR	6.9	3900	7.1	6.7	6.9
95.1	KRDO-FM	Colorado Springs, CO	SA	3.9	2200	4.9	5.2	5.0
96.1	KBIQ	Fountain, CO	RC	2.1	1200	2.6	3.2	2.2
96.9	KCCY	Pueblo, CO	CW	1.1	800	1.2		
98.1	KKFM	Colorado Springs, CO	CR	8.1	4600	8.5	8.9	10.5

USA

Cincinnati

WCKY Talk [TK]
550 5000/1000w DA-2 7s 3s 3c 4c 2i
+Jacor Communications
Sister WLW also owns WEBN,
LMA controls WPPT
513-241-1550 fax 513-851-4555
1111 St. Gregory St., 45202
GM Mike Kenney PD John Phillips
SM Ed Lux
Cincinnati Arbitron 4.4% 11100p

WLW Talk/Country overnight [TKCW]
700 5000/5000w ND 6s
+Jacor Communications
Sister WEBN also owns WCKY,
LMA controls WPPT
513-241-9597 fax 513-241-5427
1111 St. Gregory St., 45202
GM David Martin PD Bill Willis
SM Rick Porter
Cincinnati Arbitron 12.8% 32700p
Dayton Arbitron 4.8% 6000p

WTSJ Religion [RL]
1050 1000/276w ND 0s
+Guardian Communications, Inc.
513-931-8080 fax 513-931-8108
800 Compton Rd., #33, 45231
GM/SM Richard David PD Steve McDaniels
Cincinnati market

WUBE Country [CWs]
1230 1000/1000w ND 6s 0c 0i
+American Media
Sister WUBE-FM also owns WYGY
513-721-1050 fax 513-421-7480
225 E. 6th St., 45202
GM George Touss PD Tim Clouston

ALL LETTERS

1230	Kingman, AZ
1130	Batesville, AR
98.9	Great Falls, MT
108.5	Huntsville, MO
870	Bethany, MO
95.5	Bethany, MO
105.9	Allamore, NE
92.7	Butte, MT
103.1	Oakhurst, CA
105.7	Avenal, CA
1080	Little Rock, AR
780	Los Angeles, CA
88.3	Little Rock, AR
95.1	Shawnee, OK
1580	Abilene, KS
97.7	Augusta, AR
980	Oakland, CA
88.1	San Francisco, CA
830	Long Island, AK
1350	Albuquerque, NM
1500	Alamo Community, NM
91.9	Great Falls, MT
97.5	Meredot, CA
91.3	Alvin, TX
103.1	Santa Monica, CA
103.9	Inglewood, CA
1340	Preston, ID

FREQUENCY

107.5 MHz

WWFG	Uniontown, AL	1430w 471R
KASH-FM	Anchorage, AK	10000w -280R
KSED	Sedona, AZ	98400w 1463R
KCRZ	Tucson, AZ	14500w 3520R
KITZ	Mountain Home, AR	100000w 656R
KPPL	Colusa, CA	28000w 633R
KGO-FM	El Centro, CA	25500w 75R
KPIG	Freedom, CA	2850w 335R
KMPH-FM	Hanford, CA	20300w 784R
KLVE	Los Angeles, CA	29500w 2998R
KRAZ	Sutter Creek, CA	1230w 514R
KWIX-FM	Lakewood, CO	100000w 1198R
WQBA-FM	Miami, FL	95000h79500w 1007R DA
WTF-FM	Omega, GA	3000w 328R
WDBN	Wrightsville, GA	6000w 328R
WGCI-FM	Chicago, IL	33000w 803R
WJOD	Galesburg, IL	6000w 328R
WZZQ	Terre Haute, IN	27500w 670R
KQDM	Des Moines, IA	50000w 492R
KSCB-FM	Liberal, KS	100000w 511R
WROK	Falmouth, KY	610w 686R
WZLK	Vega, KY	580w 722R
KCIL	Houma, LA	100000w 1355R
KOQZ	Ruston, LA	97700w 1088R
WTHH	Louisville, ME	50000w 610R
WFCC-FM	Chatham, MA	50000w 341R

CANADA

BRITISH COLUMBIA

Abbotsford

CFVR 10000/10000w DA-2 [AC-OL]
850 +Fraser Valley Bostrs, Ltd.
Sister CFSR
604-859-5277 fax 604-859-9907
2722 Allwood St., Matsqui V2T 3R8
Vancouver market

CFSR 50000w 475R [8A] 6n
104.9 +Fraser Valley Bostrs, Ltd.
Sister CFVR
604-859-5277 fax 604-859-9907
2722 Allwood St., Matsqui V2T 3R8
Vancouver market

Alert Bay

CBRY 77w -167R [VA* r:CBU-880]
106.1 +CBC English 604-862-6000

Alexis Creek

CBYU 430w 941R [VA* r:CBTK-880]
93.7 +CBC English 604-861-3781

The 1995 M Street Radio Directory is the radio industry's most complete, accurate, and affordable reference book. Now easier to read and completely revised with LMA's & poplies, ratings trends, personnel, and more. Easy to carry, easy to use, with over 25,000 updates in this 4-page, 8" by 9" softbound edition. For ordering information, see order blank on back of this page.

M STREET CORPORATION
(212) 473-4668

What is M STREET?

The **M Street Corporation** maintains the industry's most accurate, up-to-date database of all radio stations in the U.S. and its territories and Canada. From this database, we provide directories, custom reports, mailing labels, maps and consulting services for thousands of companies—from government agencies to record companies.

Unlike other companies who simply update by reviewing trade journals or sending out surveys, **M Street** goes to great lengths to maintain its data's accuracy and objectivity. First, **M Street** has a network of over 200 stringers and reporters that keep us abreast of any changes in their markets or regions—whether it's a format change, a new station on the air, or a simple phone number change. Second, the staff of **M Street** actually drives through approximately 300 markets a year, checking each station in the market against the database. Third, we actively update the database by phoning all stations.

M Street is also the source of information for the industry's other trade publications such as *Radio & Records*, *Radio Business Report*, *Inside Radio*, *Billboard*, and the *Small Market Radio Newsletter*. **M Street** is also used as a source for industry-related news by the *Wall Street Journal*, *USA Today*, *Associated Press*, *ABC News*, *American Demographics*, *New York Newsday*, and many others. **M Street** also provides data for other directories published by *Billboard Publications* and the *Country Music Association*. **M Street** also provides format data to PRS Corp. in Hong Kong. PRS developed the ID Logic™ technology that is now incorporated into car stereos manufactured by *Alpine*, *Matsushita*, and others. This system allows the user to search for stations by format, and displays call letters and city right on the radio display!

The M Street Radio Directory

The **M Street Radio Directory** is our best known publication as the authoritative source for station information. This approx. 864 page, 8" x 9" soft cover book lists addresses, phone numbers, personnel, formats, facilities, owners, markets and ratings for over 13,000 stations across the U.S. and Canada. The book is divided into four sections. The first lists stations by State and City of License. The second section is a unique listing of stations in almost 400 radio markets. These market "dial cards" list the stations in each market, their formats, frequency, call letters, and ratings. This section is most valuable for those that want a quick overview of a market, whether it's measured by Arbitron or not. The third lists all stations alphabetically by call letters. The fourth section lists them in frequency order.

The M Street Journal

M Street also publishes *The M Street Journal*, a weekly publication that is truly the industry's "Journal of Record." Although other publications may list a few changes each week, the *Journal* is the industry's only source that catalogues all format changes, call letter changes, ownership changes, new station applications and grants, station facility changes, translators, and new frequency allocations. We also summarize the week's news in an easy-to-read, newsletter format.

M Street Customized Data Services

M Street's data services are simply the best in the business. We provide mailing labels, custom reports, and databases to most of the industry's largest corporations. Data can be sorted, or "pulled," by any criteria we have on file—format, region, owner, etc. Generally, custom orders are shipped within a couple of days. Our custom database services give you access to over 100 pieces of information on every station in the U.S. and Canada. The data can be installed on your computer system to be used with your software and updated as often as you like.

M Street helps a lot of people keep track of it all. Call us. We can help you, too.

THE M STREET RADIO DIRECTORY & JOURNAL ORDER FORM

- Please enter my subscription to **THE M STREET JOURNAL** and send me the 1996 **M STREET RADIO DIRECTORY** (when published) all for \$119.00. (Subscribers may purchase additional directories below at \$28.00+\$5.00 S&H).
- Please send me ___ copies of the 1995 **M STREET RADIO DIRECTORY** (now available) at \$39.00 + \$5.00 S&H each.
- I'd like to try **THE M STREET JOURNAL** for 13 weeks at the rate of \$36.00. (quarterly subs. do not include the directory)
- Please reserve ___ copies of the 1996 **M STREET RADIO DIRECTORY** (when published) at \$39.00 + \$5.00 S&H each

NAME	<input type="checkbox"/> CHECK <input type="checkbox"/> VISA <input type="checkbox"/> MASTER CARD <input type="checkbox"/> AMERICAN EXPRESS	PHONE (IMPORTANT)
COMPANY	NAME ON CREDIT CARD	TOTAL AMOUNT
ADDRESS	CARD NUMBER	EXPIRES
CITY, ST, ZIP	BILLING ADDRESS REQUIRED	SIGNATURE

M STREET, 304 Park Ave S Floor 7, New York NY 10010 (212) 473-4668 Credit card orders call 800 248-4242