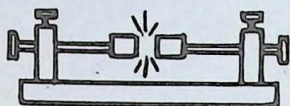
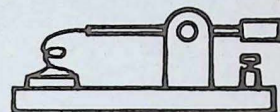


# Spark-Gap Times



Published By  
*The Old Old Timers Club*



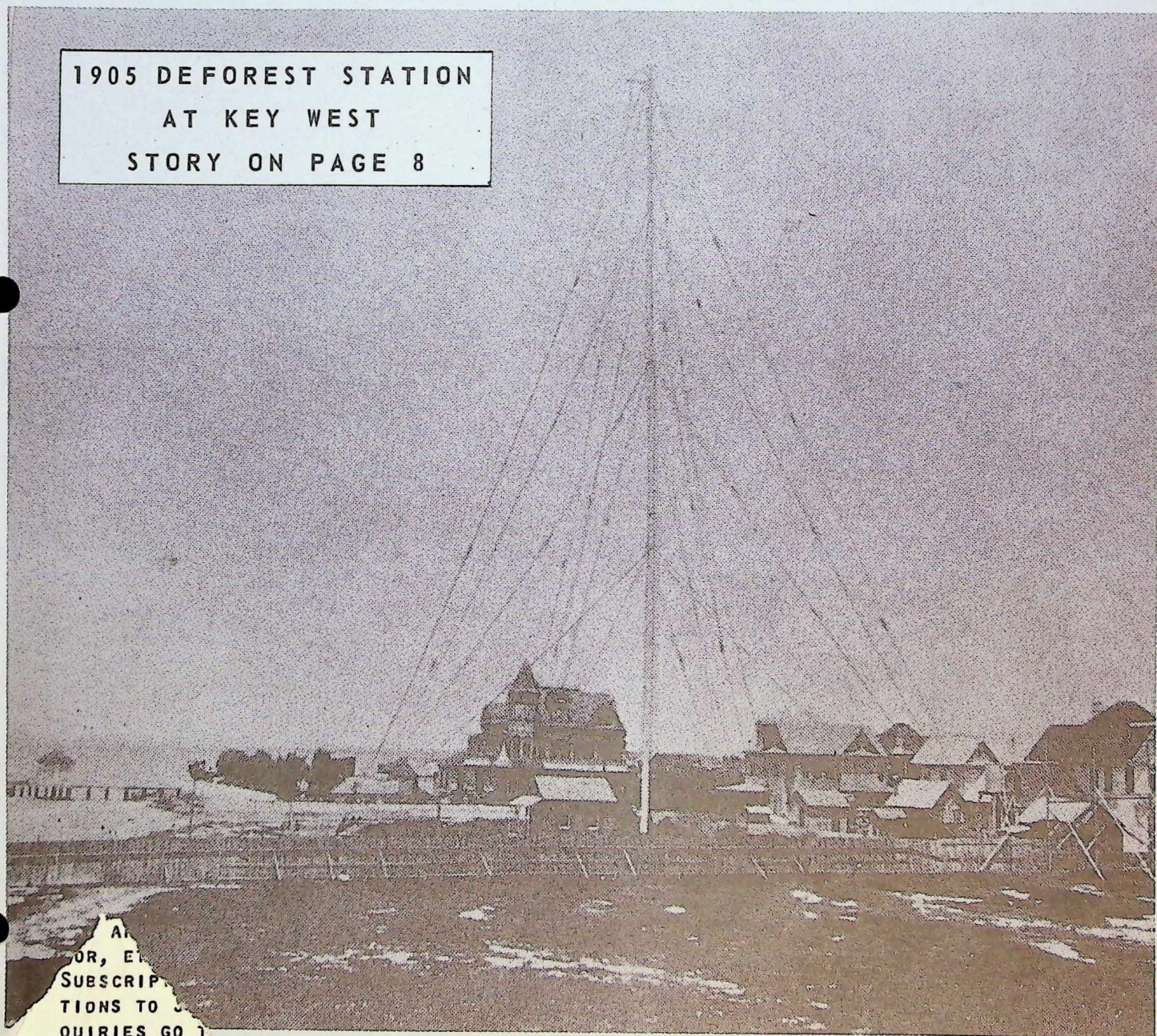
VOL. 7

LOVELL - MAINE

APRIL, 1967

NO. 38

1905 DEFOREST STATION  
AT KEY WEST  
STORY ON PAGE 8



At  
or, E  
SUBSCRIP  
TIONS TO  
QUIRIES GO 1



RATE  
CARD

**Spark Gap Times**  
BI-MONTHLY JOURNAL OF  
**Old Old Timers Club**

CLOSING  
DATES

GENERAL ADVERTISING PER INSERTION	1 TIME	2-3	4-5	6	PAID
INSIDE FRONT COVER	\$60.	\$57.	\$53.	\$50.	DEC. 1966 575
INSIDE BACK COVER	60.	57.	53.	50.	DISTRIBUTION:
BACK COVER	60.	57.	53.	50.	NEW ENGLAND 23%
FULL PAGE, INSIDE	50.	47.	43.	40.	MID. ATL. 26%
$\frac{1}{2}$ PAGE, INSIDE	30.	27.	23.	20.	SOUTHERN 16%
$\frac{1}{4}$ PAGE, INSIDE	20.	20.	18.	15.	MIDWEST 16%
$\frac{1}{8}$ PAGE, INSIDE	10.	10.	8.	5.	MTN. & CAL. 16%
$\frac{1}{16}$ PAGE, INSIDE	5.	5.	4.	3.	FOREIGN 3%

MONTH OF ISSUE	RELEASE DATE	CLOSING DATE FOR COPY
FEB.	FEB. 10	DECEMBER 20
APRIL	APR. 10	FEBRUARY 20
JUNE	JUNE 10	APRIL 20
AUGUST	AUG. 10	JUNE 20
OCTOBER	OCT. 10	AUGUST 20
DECEMBER	DEC. 10	OCTOBER 15

MECHANICAL

FULL PAGE, INCL COVER	7 $\frac{1}{4}$ " x 10"
HALF PAGE, HORIZONTAL	7" x 5"
HALF PAGE, VERTICAL	3 $\frac{3}{8}$ x 10"
QUARTER PAGE	3 $\frac{3}{8}$ x 5"
EIGHTH PAGE, HORIZ.	3 $\frac{3}{8}$ x 2 $\frac{1}{4}$ "
SIXTEENTH PAGE	3 $\frac{3}{8}$ x 1 $\frac{1}{4}$ "
CLASSIFIED ADS	3 $\frac{3}{8}$ WIDE

PAGES FACING INSIDE COVERS - \$45., FULL PAGE ONLY, 6 TIME CONTRACT.  
CLASSIFIED 10¢ WORD. MINIMUM \$3. PAYMENT, ALL COPY, NET 10 DAYS  
MEMBER'S SUBSCRIPTION \$2.50 YEAR. NON-MEMBERS \$3.00 YEAR. 50¢ COPY.  
SUBSCRIBERS: MALE. AVERAGE AGE 63: CLUB MEMBERS, APPROXIMATELY 675.

THIS SPACE TO BE SOLD  
BY ONE OF OUR MEMBERS

ADDITIONAL ADVERTISING  
SOLICITORS NEEDED IN THE  
SOUTHWEST MID-WEST SOUTH  
NEW YORK AND NEW ENGLAND

APPLY TO ADVERTISING MGR

W1BHD



# Spark Gap Times

BI-MONTHLY JOURNAL OF  
THE OLD OLD TIMERS CLUB

EUNICE R. THOMPSON  
MANAGING EDITOR  
LOVELL MAINE 04051

TECHNICAL EDITOR ..... W1PS  
ART EDITOR ..... W1GU  
INTELLIGENCE ..... W1KC  
HISTORIAN ..... W2ZI  
PUBLISHER ..... W8HR  
DISTRIBUTION MANAGER ... W8TE  
ADVERTISING MANAGER ... W1BHD  
WESTERN ADV. REP. .... W7OE  
MEMBER'S SUBSCRIPTION \$2.50  
NON-MEMBERS ..... 3.00  
DUAL ADDRESSES, EXTRA .50

SIX ISSUES ANNUALLY: FEBRUARY  
APRIL, JUNE, AUGUST, OCTOBER,  
DECEMBER. CLOSING DATE FOR AD-  
VERTISEMENTS AND TEXT MATTER,  
20TH OF 2ND MONTH PRECEDING.

## Old Old Timers Club

T. FRANK SMITH  
EXECUTIVE SECRETARY  
Box 840 CORPUS CHRISTI, TEXAS  
78403

DIRECTOR MCAULEY ..... W1KJ  
DIRECTOR HERLAND ..... W2MDB  
DIRECTOR ARMSTRONG .... W5RIH  
DIRECTOR MEYERS ..... W6MLZ  
DIRECTOR BAUMGARDNER .. W8BF  
PRESIDENT OSBORNE ..... W4MF  
VICE-PRESIDENT DUNN ... W6WPF  
TREASURER SMITH ..... W5VA  
MANAGING EDITOR SGT ... W1MPP  
TECHNICAL EDITOR SGT .. W1PS  
PUBLISHER, SGT & BB ... W8HR  
ATTORNEY & COUNSELLOR . W1TN  
STAFF ASSISTANT ..... W1GU  
HISTORIAN ..... W2ZI  
INTELLIGENCE OFFICER .. W1KC  
DISTRIBUTION MANAGER .. W8TE  
DETAILED ADDRESSES IN ROSTER

COMMUNICATIONS RELATING TO  
SGT ARTICLES, LETTERS TO EDI-  
TOR, ETC. ADDRESS TO LOVELL.  
SUBSCRIPTIONS TO SGT, APPLICA-  
TIONS TO JOIN AND GENERAL IN-  
QUIRIES GO TO CORPUS CHRISTI.

APRIL 1967

CONTENTS

PAGE 1

FLASH-OVERS	BLUE BOOK	SGT SURVEY .....	2
COMING EVENTS	RESPONSIBILITIES OF DIRECTORS		3
PRESIDENTIAL PROBLEMS	W4MF	GO LIKE SIXTY ...	4
HISTORICAL	W2ZI	DECADE MILESTONES .....	5
SURVIVING FOUNDERS AS THEY APPEAR IN BLUE BOOK			6,7
EARLY ACTIVITIES OF LEE DEFOREST GERALD TYNE			8-10
WIRELESS TELEGRAPH TRILOGY			K3AA ..... 11,12
EMISSIONS OF ALEC TRAUN KICKBACKS OF NUART CELA			. 12
ROSTER CHANGES			LISTENING POST (LIFT-OUT SECTION) 13
LISTENING POST (LIFT-OUT SECTION) .....			14-16
INTELLIGENCE W1KC			PROPOSED FUTURE ARTICLES 17-19
EXTRACTS FROM LETTERS .....			20,21
BRAIN WAVES .....			22
DIRECTORS' REPORT PUDDLE JUMPERS EGGS LAID ....			23
NET DIRECTORY			CLOCK WATCHERS GUIDE ..... 24
CLOCK WATCHERS GUIDE .....			25,26
PRE-WWI TX			GEAR PICTURE PROBLEM P.P. SURVEY .. 27
EMPLOYMENT AGENCY			SUPPLIES & SERVICES ..... 28
SGT SURVEY TABULATION			CLOCK WATCHER STATIONS ... 29





## ORIGINAL FOUNDERS PROMOTE BLUE BOOK

TWENTY YEARS AGO IN 1947 THIRTEEN AMATEURS REPRESENTING THE BUDDING STAGE OF WIRELESS Banded TOGETHER TO FORM THIS CLUB. EIGHT OF THEM HAVE SURVIVED AND THEIR PICTURES APPEAR ON PAGES 6 AND 7.

THEY WERE LED BY THE HONORABLE FOUNDER, BERT INGALLS, W1NQ, WHOSE MESSAGE TO THE CLUB 'IN THIS MEMORABLE YEAR APPEARS IN FULL ON PAGE 20.

IN THIS ISSUE OF SPARK GAP TIMES, PLANNED EXPRESSLY TO FEATURE AND MEMORIALIZE THE LIVING FOUNDERS, WE ARE ALSO USING THEM TO PORTRAY THE VIRTUES OF THE BLUE BOOK.

THE NEAREST THING TO SEEING IT, IS TO PERUSE PAGES 6 AND 7. THERE MEMBERS' PICTURES AND BIOGRAPHICAL SKETCHES APPEAR IN THE SAME FORM AS IN THE BLUE BOOK.

THE BOOK ITSELF IS A BLUE-COLORED STOUT RING BINDER WITH THE FOLLOWING COVER INSCRIPTION APPEARING IN GOLD.

THE OLD OLD TIMERS CLUB  
FOUNDED 1947  
BLUE BOOK  
OF AMATEUR WIRELESS

ON THE BINDER EDGE, ALSO APPEARING IN GOLD, IN VERTICAL TYPE, IS THE PHRASE:

O O T C BLUE BOOK

THE BINDER ITSELF, AT PRESENT PRICES, COSTS THE CLUB OVER \$3. MAILING COSTS, INCLUDING DISPATCH OF SUBSEQUENT INSERTS, AVERAGES AT LEAST 50¢ PER BUYER. THE PAPER ALONE, BEFORE PRINTING AND PUNCHING COSTS AT LEAST 50¢. TOTAL OVER \$4.

COST OF PLATES, PRINTING, ASSEMBLY, MAILING ROUTINE IS ABSORBED BY THOSE WHO WORK ON THE MONUMENTAL TASK; WE DO NOT NAME THEM LEST WE DIM THE LUSTRE OF THE ORIGINAL FOUNDERS WHOM WE HONOR IN THIS ISSUE.

OVER 400 MEMBERS HAVE NEVER SEEN THE BLUE BOOK. THE PRICE TO MEMBERS IS STILL \$3.00

## THE VOTERS SPEAK

550 SUBSCRIBERS RECEIVED IN DECEMBER A CARD ON WHICH THEY COULD INDICATE THEIR PREFERENCES FOR ARTICLES AND FEATURES TO APPEAR IN SPARK GAP TIMES.

160 CARDS HAD BEEN RETURNED TO FEBRUARY 20TH - ABOUT 30%, WHICH IS ROUGHLY EQUIVALENT TO THE TURN-OUT OF VOTERS IN AN OFF-YEAR ELECTION.

35 VOTED FOR CONTINUANCE OF SGT CONTENT EXACTLY AS IT WAS IN DECEMBER ISSUE. SOME TWO DOZEN GENERALLY COMMENDATORY LETTERS WERE RECEIVED, BUT AS THEY IGNORED THE CARD, THESE COMMENTS WERE EXCLUDED FROM THE TABULATED VOTE.

13 WANTED OUR EDITORIAL PHILOSOPHY TO BE DEADLY SERIOUS, 2 WANTED IT SERIOUS, 3 WANTED IT COMICAL AND 135 WANTED IT IN BETWEEN THE TWO EXTREMES. 7 WERE SILENT.

66 MEMBERS, OR 41% OF THOSE VOTING STATED THE MOST INTERESTING ARTICLES CONCERNED "OLD TIME" EXPERIENCES AND EQUIPMENT. THE REMAINING 59% MENTIONED ARTICLES AND FEATURES, EXCEPT FICTION, OVER THE ENTIRE SUBJECT RANGE OF THE SURVEY CARD.

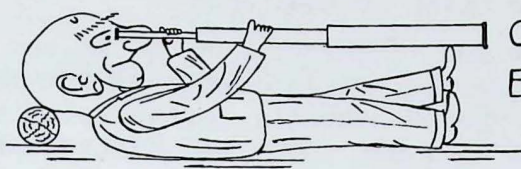
READERS WILL NOTE THAT ARTICLES IN THIS ISSUE ARE SLANTED IN THE "OLD TIME" DIRECTION. ALTHO 50% VOTED AS WANTING OR TOLERATING FICTION THAT WILL BE SOFT-PEDALLED INDEFINITELY DUE TO THE PRESSURE OF OTHER MATERIAL IN MORE POPULAR CATEGORIES AWAITING PUBLICATION.

THE 8 TOP CATEGORIES GETTING 85% OR MORE APPROVAL VOTES WERE IN THIS ORDER: MEMBER ACTIVITIES (INTELLIGENCE), PHOTOS OF MEMBERS, NEWS EVENTS, PHOTOS OF MEMBER GEAR, CARTOONS, HUMOR, LISTENING POST AND OPINIONS & IDEAS OF MEMBERS.

THE DEEPEST BOW WAS EARNED BY WIGU, OUR ART EDITOR. HE IS ABJECTLY MODEST AS AN ARTIST AND NEVER DREAMED HE WOULD MAKE 5TH PLACE. (NEITHER DID THE MANAGING EDITOR)

WE NOW HAVE A MANDATE WHICH SHOULD SERVE (PLEASE TURN TO PAGE 29)





## COMING EVENTS

### OOTC AND AWA MEMBERS SPARK COMMUNICATIONS EXHIBIT AT EXPO 67

BRUCE KELLEY, SECTY OF AWA HAS JOINED WITH THORN MAYES, W6AX IN PRODUCING THE AUDIO PART OF THE EXPO 67 COMMUNICATIONS EXHIBIT. FOUR LARGE PICTURES HAVE BEEN PAINTED TO ILLUSTRATE THE EVOLUTION OF HUMAN COMMUNICATIONS OVER THE CENTURIES.

THE FIRST SHOWS A ROMAN ATHLETE OR RUNNER CARRYING A SCROLL TELLING OF THE ASSASSINATION OF JULIUS CEASAR. THE SECOND SHOWS A MORSE TELEGRAPH OPERATOR SITTING AT HIS INSTRUMENTS, SENDING OVER LAND LINES THE NEWS OF THE ASSASSINATION OF PRESIDENT LINCOLN. THE THIRD DEPICTS THE SINKING OF THE TITANIC IN THE NORTH ATLANTIC. THE FOURTH SHOWS A COMMUNICATIONS SATELLITE RELAYING TO THE WORLD THE NEWS OF PRESIDENT KENNEDY'S ASSASSINATION.

THE CANADIAN FAIR MANAGEMENT WANTED TAPES TO PROVIDE SOUNDS APPROPRIATE TO GO WITH PICTURES TWO AND THREE AND SENT THE TEXT OF TYPICAL MESSAGES TO BE REPRODUCED, TO MEET A FEBRUARY 1ST DEADLINE.

LAND LINE MORSE MESSAGES WERE TAPED BY STUART DAVIS, W2ZH. THE QUESTION OF EMPLOYING TONES TO DIFFERENTIATE BETWEEN THE SEVERAL SHIPS WAS WORKED OUT WITH ED RASER, W2ZI AND DICK JOHNSTONE, WB6TYO. SOME TONES WERE 120 CYCLE, OTHERS 240. W6AX TAPED THEM. COMPARE THESE TONES IF YOU VISIT EXPO 67. YOU WILL IMAGINE THE TITANIC, BALTIC, CARONIA, OLYMPIC AND CARPATHIA DOCKED RIGHT THERE AT MONTREAL.

ALL THIS WORK WAS DONE WITHOUT CHARGE AND DELIVERED BEFORE FEBRUARY 1ST. THE TAPES ALSO GIVE AWA A VALUABLE PERMANENT RECORD AND IT WILL BE INCORPORATED IN A MORE COMPLETE PRESENTATION TO BE MADE AT THE SEPTEMBER 23D ANNUAL AWA MEETING AT THE FORD MUSEUM IN DETROIT. SUPPLEMENTARY MATERIAL WILL INCLUDE INSIDE HISTORICAL HIGHLIGHTS OF THE TITANIC SINKING AS REPORTED BY CHARLIE HENRY OOTC #592 AND TOM APPLEBY, W3AX AT THE LAST ANNUAL AWA MEETING IN PHILADELPHIA LAST SEPTEMBER.

## RESPONSIBILITIES OF DIRECTORS

FRANK SMITH HAS HAD GRATIFYING RESPONSE TO HIS LETTERS REQUESTING CERTAIN MEMBERS TO ALLOW THEIR NAMES TO GO ON THE BALLOT FOR THE UPCOMING ELECTION OF DIRECTORS. A NUMBER OF THESE HAVE ASKED THAT THE RESPONSIBILITIES OF DIRECTORS BE DEFINED. THESE WERE OUTLINED IN GENERAL TERMS ON PAGE 27 OF FEBRUARY SPARK GAP TIMES.

MORE SPECIFIC ACTIVITIES ARE THE FOLLOWING ITEMS SUBJECT TO DIRECTOR ACTION:

DIRECTORS NEED TO BE ON CONSTANT LOOKOUT FOR TALENT TO FILL THE OFFICES LISTED ON PAGE 27 ABOVE.

DIRECTORS MUST APPROVE PROPOSED CHANGES IN CONSTITUTION OR BY-LAWS BEFORE SUCH CHANGES ARE PRESENTED TO THE MEMBERSHIP. SEVERAL CHANGES ARE NOW BEFORE THE PRESENT DIRECTORS AWAITING THEIR DISCUSSION AND ACTION.

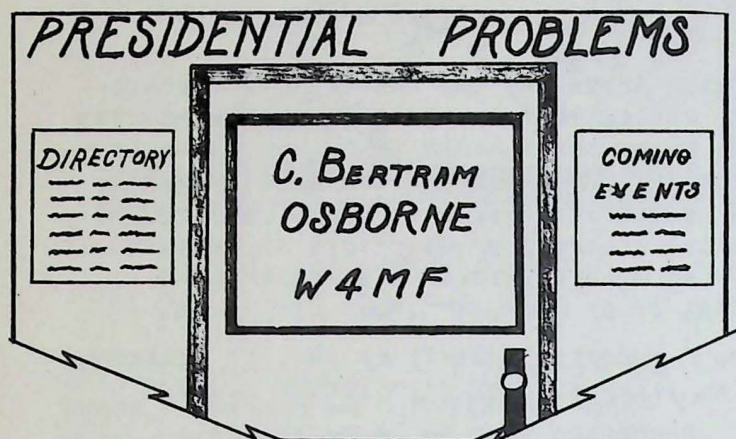
DIRECTORS ARE RESPONSIBLE FOR CLUB POLICIES AND PLANS. IF THERE ARE NO DEFINED POLICIES OR PLANS, AS AT PRESENT, THE DIRECTORS ARE RESPONSIBLE FOR CORRECTING THIS CONDITION.

THE DIRECTORS, THROUGH THEIR APPROVED POLICIES AND PLANS, ARE RESPONSIBLE FOR THE OVERALL SOUNDNESS, FINANCIAL STABILITY AND PROGRESS OF THE CLUB. IF PREVIOUSLY APPROVED PLANS DO NOT WORK OUT IT IS THE RESPONSIBILITY OF THE DIRECTORS AS LED BY THE PRESIDENT, TO MODIFY THEM.

THE DIRECTORS ARE RESPONSIBLE FOR DEFINING THE DUTIES OF EACH OFFICER AND MAKING SUCH DUTIES A MATTER OF RECORD.

THE ABOVE SHOULD CLARIFY FOR MEMBERS AND CANDIDATES ALIKE DIRECTOR DUTIES. IMPLICIT IS THE NEED FOR COMMUNICATION BETWEEN DIRECTORS. IT IS PARADOXICAL THAT SUCH COMMUNICATION, BETWEEN BASICALLY COMMUNICATION-MINDED MEN, HAS BEEN EXTREMELY POOR. THIS IS A FIRST DEFICIENCY TO BE CORRECTED. ALSO ESSENTIAL TO INTELLIGENT DIRECTOR ACTION ARE FACTS AS THEY RELATE TO THE CLUB AND THE MEMBERS. TO DISSEMINATE SUCH FACTS AND PROVIDE A DISCUSSION FORUM IS THE DUTY OF SGT.





THE PROBLEM OF PRESERVING RELICS, AS EXPLAINED IN MY FEBRUARY COLUMN, IS A CONTINUING ONE NOT QUICKLY SOLVED.

HOWEVER A SUGGESTION HAS COME IN WHEREBY WE CAN TACKLE IT IN PART AT THE GRASS-ROOTS LEVEL. IT IS THIS:

THOSE HAVING RELICS OF THE VINTAGE OF THOSE ILLUSTRATED ON THE COVER OF DEC.66 SGT COULD MOUNT THEM ON A THREE-LEGGED EASEL. THE MOUNTING SURFACE WOULD BE WALL OR PEG-BOARD TO WHICH YOUR ANCIENT TREASURES WOULD BE SECURELY WIRED OR BOLTED, LABELLED WITH APPROPRIATE DESCRIPTIONS. AT THE TOP WOULD BE YOUR NAME AS OWNER WITH OOTC AFFILIATION AND NUMBER. ON THE BACK, LESS CONSPICUOUSLY WOULD BE A LABEL GIVING YOUR FULL NAME, ADDRESS AND NAME OF NEAREST RELATIVE. IF YOU WISH THE COLLECTION PASSED ON AT YOUR DEMISE INCLUDE ON THE LABEL INSTRUCTIONS TO THAT EFFECT.

THIS EASEL SHOULD BE MADE OF SUCH DIMENSIONS THAT IT WILL LAY DOWN ON THE REAR SEAT OF A SEDAN. THIS MAKES TRANSPORT EASY IF YOU'LL LOAN YOUR RELICS FOR EXHIBITION AT CLUB MEETINGS, HAM FESTS OR OTHER AFFAIRS. HINGES ADDED TO THE LOWER PART OF THE LEGS MAKES THEM EXTENSIBLE, ADAPTING THE EXHIBIT FOR EITHER FLOOR OR TABLE MOUNT POSITION AND STILL SHORT ENOUGH TO GO ON SEDAN REAR SEAT. THE WHOLE ASSEMBLY WILL LEAVE ENOUGH FROM A \$5 BILL TO BUY YOU A LUNCH.

NOW FOR THE GIMMICK. THE FIRST FIVE OF YOU WHO MAKE UP SUCH A DISPLAY AND SEND PHOTOGRAPH AND SHORT DESCRIPTION TO ED. OF SGT WILL HAVE HIS SUBSCRIPTION EXTENDED 2 YEARS. SO YOU REALLY GET THE EASEL FREE. NOTHING SELLS TODAY UNLESS SOMETHING "FREE" IS THROWN IN. IN THIS WAY WE TRICK YOU INTO DOING SOME WORK.

## FORMULA FOR MAKING A CLUB OF 600 GO LIKE SIXTY

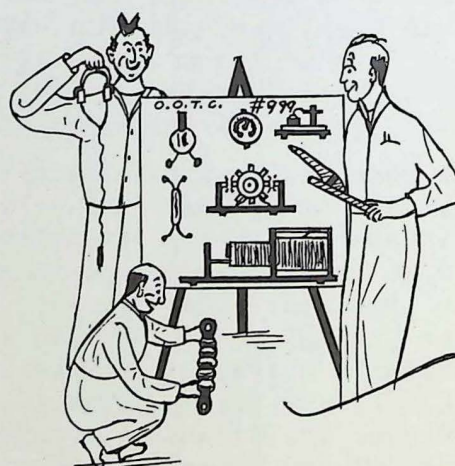
OVER A YEAR 300 MEMBERS, ABOUT HALF, PUT IN THEIR 2¢ WORTH. THIS IS EQUIVALENT TO 6 HOURS OF "WORK" ANNUALLY, REPRESENTED BY SENDING OUT CLUB QSL CARDS AND PRELIMINARY APPLICATION BLANKS, BY MENTIONING OOTC OVER THE AIR, BY ADVISING THE INTELLIGENCE OFFICER OF THEIR CURRENT ACTIVITIES, BY ANSWERING QUESTIONNAIRES, BY KEEPING UP THEIR SUBSCRIPTION TO SPARK GAP TIMES.

OVER A YEAR 12 MEMBERS PUT IN THEIR 6¢ WORTH OF WORK EQUIVALENT TO 3 HOURS PER MONTH EACH. THE 12 INCLUDE DIRECTORS, VICE-PRES., TREAS. INTELLIGENCE OFFICER, HISTORIAN, LEGAL COUNSELLOR, DISTRIBUTION MANAGER AND STAFF ASSISTANT.

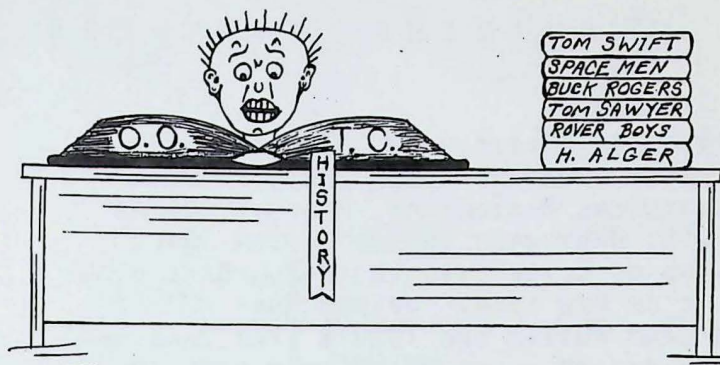
OVER A YEAR 6 MEMBERS PUT IN THEIR \$1.00 WORTH OF WORK EQUIVALENT TO 60 HOURS PER MONTH EACH. THESE 6 WOULD INCLUDE THE PRESIDENT, EXECUTIVE SECRETARY, EDITOR SGT, PUBLISHER AND ADVERTISING MANAGER AND HIS ASSISTANTS. 60 HOURS PER MONTH IS AN AVERAGE; SOME OF THESE ARE ALREADY WORKING 40 HOURS PER WEEK.

THEN THERE WOULD BE A RANDOM GROUP OF 60 INCLUDING MINOR OFFICERS, WHO WOULD UNDERTAKE SPECIAL ASSIGNMENTS SUCH AS PREPARING AN ARTICLE FOR SGT, REPRESENTING THE CLUB AT CONVENTIONS OR SHOWS, OR SUPERVISING A SPECIAL PROJECT.

THE ABOVE APPLIES THE LAW OF SIX TO MAKE OOTC GO LIKE SIXTY. AND WHY NOT? MOST OF US ARE OVER 60.







## INSTALLMENT HISTORY OF OOTC

No. 3 By Ed RASER W2ZI

IT IS INTERESTING TO NOTE THAT IN THE EARLY YEARS MUCH OF THE CLUB BUSINESS WAS CONDUCTED BY ON-THE-AIR MEETINGS. ON THE JAN. 29, '48 MEETING THE FOLLOWING STATIONS WERE PRESENT: W1LB1, W1ZE, W2UH, W2APN, W2TF, W3FJU, W3NUN, W4VA AND SECRETARY W1NQ.

CONGRATULATORY LETTER ON OOTC FORMATION FROM BILL PARKER, G6BY WAS READ BY THE SECTY AT THE FEB. 5TH MEETING. FREQUENT REGULARLY SCHEDULED QSOS ON 75 WERE HELD THOSE DAYS BETWEEN W1ZE AND G6BY IN EARLY MORNING HOURS. W1ZE WOULD REPORT THESE TO THE SUBSEQUENT OOTC MEETING AND GIVE SIGNAL REPORTS OF MEMBER STATIONS PREVIOUSLY HEARD BY G6BY. THIS BECAME ACTIVELY COMPETITIVE, EACH MEMBER HOPING HIS SIGNAL WOULD BE MENTIONED.

AT THE FEB. 26TH MEETING TWO DX REPORTS WERE READ, ONE FROM BRITISH-OCCUPIED HERFORD IN GERMANY STATING THE ENTIRE ROUND TABLE WAS HEARD THERE REGULARLY. ANOTHER FROM RECIEF, BRAZIL STATED THE SAME.

AT A LATER MEETING MEMBERS PRESENT RECORDED A VOTE OF THANKS AND IT WAS SENT TO HELEN XAVIER OF NEW BEDFORD, MASS. FOR HER DONATION OF A LARGE 400 PAGE CLOTH BOUND BOOK FOR THE CLUB MINUTES TOGETHER WITH A LOOSE-LEAF LEATHER-BOUND BOOK FOR FILING LETTERS, CLIPPINGS AND PHOTOGRAPHS FROM CLUB MEMBERS.

AT THE APRIL 8TH MEETING A VERY CLEAR BROADCAST WAS MADE BY BILL PARKER G6BY THRU W1CPI'S STATION AT WAKEFIELD, R.I. BILL EXTENDED GREETINGS TO ALL CLUB MEMBERS, ALSO FELICITATIONS TO BERT, W1NQ ON HIS BIRTHDAY. THE LAST REGULAR SEASONAL MEETING WAS HELD APRIL 29TH BEFORE THE ANNUAL SUMMER SHUT-DOWN.

APR 67

ENVELOPES FOR SGT ARE ADDRESSED TWO MONTHS BEFORE YOU RECEIVE MAGAZINE

AT THIS TIME THE MEMBERSHIP STOOD AT 41. THEY GO DOWN IN AMATEUR RADIO HISTORY AS THE FORERUNNERS AND PIONEERS OF THE GAME.

OUR FIRST SILENT KEY WAS RECORDED WITH THE PASSING OF JOHN PRESTON, W2GOX ON JULY 17, 1948. HE WAS 58, RESIDENT OF NORTHPORT, L.I., N.Y.

FOUNDER W1NQ AIRED THIS COMMENT: LET THE ENTIRE MEMBERSHIP OF 41 ACTIVE MEMBERS PRIZE THEIR PRESENT POSITION IN AMATEUR RADIO VERY HIGHLY AND DEDICATE THEIR REMAINING YEARS TOWARD THE ADVANCEMENT OF THE ART, AND THE COMRADESHIP OF THEIR FELLOWMAN AS SIGNIFIED BY THE "SHEEPSKINS" HANGING ON THE SHACK WALL.

\*\*\*\*\*

## DECADE MILESTONES IN RADIO

- 1887 - HERTZ SHOWED ELECTROMAGNETIC WAVES SIMILAR TO WAVES OF LIGHT AND HEAT.
- 1897 - FIRST MARCONI STATION ON ISLE OF WIGHT OFF ENGLAND ACHIEVED RANGE OF 14½ MILES.
- 1907 - MARCONI STATIONS AT CLIFDEN, IRELAND AND GLACE BAY, CANADA OPENED FOR LIMITED PUBLIC SERVICE.
- 1917 - FIRST QUANTITY PRODUCTION OF VACUUM TUBES WITH COATED AND TUNGSTEN FILAMENTS BY WESTERN ELEC. AND G.E.
- 1967 - RIGHT ABOUT NOW, APRIL 22 AND 23 OLD OLD TIMERS CLUB HAS BOOTH AT SWAMPSCOTT, MASS. ARRL CONVENTION WITH OOTC MEETING ON SUNDAY MORNING AT NEW OCEAN HOUSE AND JOINT LUNCH WITH QCWA SAME DAY.



## HISTORY

BY THE

STACK

BOUND VOLUMES OF  
QST FROM THE 1ST  
TO RECENTLY.

WHO WILL DO

AS WELL WITH

SGT ?

PAGE 5



# ORIGINAL AND NOW SURVIVING FOUNDERS



HUBERT E. INGALLS, WINQ, RFD EPPING, N.H. HANDLE - BERT. BORN APRIL 8, 1893. FIRST 2-WAY WIRELESS CONTACT 1908. PRESENT OCCUPATION ELECTRICAL CONTRACTOR. WENT TO SEA AS WIRELESS OPERATOR ON S.S. NANTUCKET OUT OF BOSTON 1910. TOOK OUT NEW S.S. LENAPE OF CLYDE LINE IN 1912. SAILED ON ALL PROMINENT LINES OUT OF NEW YORK. JOINED NAVY WWI AS CRM. IN THE YACHTING GAME DURING THE 1920'S (THE JAZZ AGE) SENT OUT THREE S.O.S. DISTRESS CALLS WHILE OPERATING AT SEA; ONE FIRE AND TWO COLLISIONS. FOUNDER OF OOTC AND SERVED AS SECRETARY 1947 TO JANUARY 6, 1955.



ROLAND B. BOURNE, W1ANA, EX 2BKT, 27 SULGRAVE ROAD, WEST HARTFORD, CONN. 06107. HANDLE - ROLAND. FIRST 2-WAY CONTACT 1908. BORN JAN. 5, 1895. MARINE AND SHORE OPERATOR, 1912-1914. CALLS MJZ, KKR, KKD, KYH, WSE, WIM, WCC. GRADUATE R.P.I. 1920. EE. SIGNAL CORPS, AEF 1917-1919. TOOK MAJ. E. H. ARMSTRONG'S COURSE IN WIRELESS AT SORBONNE, PARIS, 1919. WON GRAND PRIZE, TRANSATLANTIC RECEIVING CONTEST 1923. ENGINEER, RCA, RIVERHEAD, L.I. AND CHATHAM, MASS. 1921-1924. CHIEF ENGINEER, C. D. TUSKA CO., HARTFORD CONN. 1924-1925. DIR. OF RESEARCH, MAXIM SILENCER COMPANY 1925-1960 AND ITS V.P. AND TREAS. HOLDER OF 72 U.S. PATENTS. NUMEROUS ARTICLES IN QST. PRESENTLY CURATOR, MUSEUM OF AMATEUR RADIO A.R.R.L. ACOUSTIC CONSULTANT.



JOHN E. WILKINSON, W1TK. EX 1KN, 1TE, 1BVV, W1FMP. 2032 MAIN ST., WESTPORT POINT, MASS. HANDLE - WILKIE. BORN AUG. 26, 1898. FIRST 2-WAY WIRELESS CONTACT JUNE 6, 1907. PRESENT OCCUPATION - MIT STAFF - ELECTRONIC RESEARCH AND DEVELOPMENT. FIRST ON AIR USING COIL AND CALL WL. USED TO CALL NAVY SHIP AT NEWPORT NAVAL BASE WITH CALL NOK. FIRST LICENSED AS 1KN, SEPT. 1912. WIRELESS OPERATOR FOR USN 1917-1918 AT NAF, NEWPORT, R.I. WAS TREASURER OOTC. SINCE 1950 WORKED FOR LINCOLN LABORATORY - MIT - RESEARCH AND DEVELOPMENT - BACK SCATTER, RADIO PROPAGATION, ANTENNAS, FORWARD SCATTER, AURORA STUDIES, POINT-TO-POINT RADIO COMMUNICATION IN PACIFIC. RETIRED JULY 1, 1964



LELAND K. SWART, W2RBH. FERNWOOD TRAIL, MOUNTAIN LAKES, NEW JERSEY. HANDLE - LELAND. FIRST 2-WAY WIRELESS CONTACT 1908.



## CHANGES IN ADDRESS OR CALL

CALL	NO.	NAME	HANDLE	YEAR	LAST KNOWN ADDRESS	ZIP
K1BD	651	THEODORE C. BANTA	TED	1912	19 BIRCHWOOD DRIVE, GREENWICH, CONN.	06830
W1TYO	81	CHARLES E. BARRETT, JR.	DOC	1911	Box 102, FARMINGTON, CONN.	06032
W3ZA	776	LYMAN M. RUNDLETT	RUNDY	1926	2001 EYE ST., N.W., WASHINGTON, D.C.	20006
W4IA	788	EVERETT L. BATTEY	EV	1926	RFD 1, GAINESVILLE, VA.	22065
K4ZA	776	LYMAN M. RUNDLETT	RUNDY	1926	102 HICKORY ROAD, STERLING PARK, VA.	22170
K6KT	435	W. E. FRANCISCO	WALLY	1916	3015 GLENDALE BLVD., Box 39742, LOS ANGELES, CAL	90039
K6ZUO	419	VERNON W. SOUVEROFF	VERN	1923	209 BENBOW AVENUE, SAN JOSE, CALIF.	91500
W7COH	71	TOWNSEND J. RIGBY	RIG	1906	136 EAST KENT, MISSOULA, MONT.	59801
Assoc.	731	FRANK GEISEL		1919	2816 TICE CREEK DRIVE, WALNUT CREEK, CALI.	94529
(W4FEH)	239	ROBERT T. INMAN	BOB	1920	214 PARK RIDGE DRIVE, HOT SPRINGS, ARK.	71901

## NEW MEMBERS

W1ACJ	799	EDWIN W. STROM	ED	1923	98 WOODMONT STREET, WEST SPRINGFIELD, MASS.	01089
K2GIN	801	ALEXANDER M. MCGLASHAN	MAC	1926	249 CAROLINE AVE., GARDEN CITY SO., L.I., N.Y.	11530
W3BQP	797	HENRY S. CONARD	HANK	1922	P.O. Box 234, GLEN MILLS, PA.	19342
W4BPD	800	GUS M. BROWNING	GUS	1925	Rt 1 Box 161A, CORDOVA, S.C.	29039
W4KF	796	CHESTER H. YOUNG	CHECK	1923	1308 30TH STREET, SHEFFIELD, ALA.	35660
K5KAA	794	CLETUS G. FLEMING	CLETE	1923	2258 MENDEZ STREET, NEW ORLEANS, LA.	70122
W6GYH	798	C. P. CAVADINI	CAVI	1911	707 EAST HARVARD RD., BURBANK, CALIF.	91501
W6GRUS	795	JOSEPH W. BELL	JOE	1926	2285 VIRGINIA STREET, BERKELEY, CALIF.	94709
G5GH	792	CHARLES ROBERT EMARY	CHAS	1926	WESTBURY END, FINMERE, BUCKINGHAM, BUCKS,	ENGLAND

\*\*\*\*\*

SILENT KEY 1966

W5DP

No. 641

JOSEPH P. AVERNA

\*\*\*\*\*



WITH 99 NEW LISTINGS FOLLOWING, THE TOTAL LISTINGS FOR THREE ISSUES OF SPARK GAP TIMES RISES TO OVER 200. ALTHOUGH SOME STATIONS RATE SEVERAL LISTINGS IT IS SAFE TO SAY THAT ABOUT ONE THIRD OF OUR MEMBERSHIP OBSERVE REGULAR SCHEDULES ON THE AIR. THESE LISTINGS SHOULD HELP OVERCOME THE COMMUNICATIONS GAP WHICH IS ESPECIALLY PROMINENT IN OUR CLUB BECAUSE THE MEMBERSHIP IS SO SCATTERED. WITH THE INCREASED INTERCHANGE OF IDEAS AND OPINIONS OVER THE AIR THIS SHOULD LEAD TO THE FOUNDING OF SEVERAL LOCAL OOTC NETS AND ULTIMATELY TO THE ESTABLISHMENT OF REGIONAL CHAPTERS. SINGULARLY LACKING TO DATE ARE LISTINGS ON TEN AND SIX METERS. NOW THAT PROPAGATION IS IMPROVING TO FAVOR THESE BANDS THE COMMUNICATIONS GAP SHOULD BE FURTHER CLOSED BY BRINGING THE WEST AND THE EAST, AND THE MID-SECTION TO BOTH, INTO ALMOST DAILY CONTACT. LOW-POWER, OLD-FASHIONED EQUIPMENT IS STILL HIGHLY EFFECTIVE IN THESE UNCROWDED BANDS. GIVE IT A TRY.



CALL	FREQ Kcs	DAYS ON	GMT START	GMT END	MODE	POWER	ACTIVITY	AREAS BEST HEARD
W1BHD	29250	SA	0430w 0330s	0530w 0430s	AM	?	?	?
W1BHD	1815	Tu	0300w 0200s	0400w 0300s	AM	?	NET	?
W1BHD	1815	Tu	0430w 0330s	0500w 0400s	AM	?	NET	?
W1AAC	7010	Su	1600w 1500s	1800w 1700s	CW	150	CASUAL	W1,2,3,4,8,9
W1AEH	3698	DAILY	2300w 2200s	? ?	CW	?	?	?
W1AEH	3940	Th	2330w 2230s	? ?	SSB	?	?	?
K1AJ	7060	Ex SA Su	1430w 1330s	1700w 1600s	CW	500	CASUAL	W1,2,3,4,8, VE1,2,3
W1APL	3840	Su	1500w 1400s	1530w 1430s	SSB	?	SKED	?
W1AOS	3525	DAILY	1200w 1100s	1400w 1300s	CW	?	NET	?
W1HIL	3925 (5)	Mo We Fr	2145w 2045s	2245w 2145s	SSB	600	SKED	W1,2 VE1
W1HIL	50300	Su	1600w 1500s	1630w 1530s	AM	75	NET	W1
W1HIL	144800	Su	1700w 1600s	1730w 1630s	AM	75	SKED	W1
W1HIL	29100	Th	0000w 2300s	0200w 0100s	AM	125	NET	W1
W1NF	3595	We	0310w 0210s	? ?	CW	?	SKED	?
W1UE	3960	Ex Su	1300w 1200s	1400w 1300s	AM	65	NET	W1
W2BGN	3680 (5)	Mo We Fr	1400w 1300s	1500w 1400s	CW	250	?	W1,2,3,4,8
W2BGN	3965 (5)	Mo We Fr	1500w 1400s	1700w 1600s	SSB	200	?	?
W2DXX	14265	DAILY	1230w 1130s	? ?	SSB	?	SKED	?
W2IIE	3900	Su	1800w 1700s	1830w ?	SSB	150	NET	W1,2,3,8
K2IK	3850	We	1330w 1230s	1500w 1400s	?	?	?	?
K2IK	21285	Mo Th	1100w 1000s	1140w 1040s	?	?	SKED	?
W2LV	7242	Su	1400w 1300s	? ?	SSB	?	?	?
W2LV	3880	Su	1800w 1700s	? ?	SSB	?	?	?
W2MAB	3965	Su	1630w 1530s	? ?	SSB	?	?	?
W2HDB	3980	Ex SA Su	1530w 1430s	1630w 1530s	SSB	?	SKED	?
W2NA	3905	Ex Su	1830w 1730s	? ?	?	?	NET	?
W2SUR	3544	DAILY	2400w 2300s	2445w 2345s	CW	150	NET	W1,2,3 VE1,2
W2SVR	3509	DAILY	1300w 1200s	1345w 1245s	CW	150	NET	W1,2,3 VE1
W2US	14270	Mo Th	1400w 1300s	? ?	SSB	?	?	US AND EUROPE
W2VW	21340	Mo We Fr	1500w 1400s	1600w 1500s	SSB	?	?	US AND EUROPE
W2ZI	3900	DAILY	2300w 2200s	? ?	?	?	NET	?



CALL	FREQ KCs	DAYS ON	GMT START	GMT END	MODE	POWER	ACTIVITY	AREAS BEST HEARD
W3KH	21025	SA	1430w	?	CW	?	CASUAL	?
			1330s	?				
W3KH	7145	SU	1700w	?	CW	?	CASUAL	?
			1600s					
W3KH	7210	SA	1700w	?	SSB	?	CASUAL	?
			1600s					
W30Y	3610	DAILY	2345w	0015w	CW	150	NET	W1,2,3,4,8
			2245s	2315s				
W30Y	3685	TU	1500w	1530w	CW	150	SKED	W2
			1400s	1430s				
W3PL	3805	Ex SA Su	1800w	2000w	AM	100	CASUAL	W1,2,3,4,8
			1700s	1900s				
W3UXW	3505	SU	1400w	1650w	CW	1000	?	W1,2,3
			1300s	1500s				
W3UXW	3705	TH	0000w	0100w	CW	1000	?	W1,2,3,4,8
			2300s	2400s				
K3ZUH/VE4	14280	DAILY	1500w	1600w	?	?	?	?
			1500s	1600s				
W4CZ	14316	SU	1300w	1400w	SSB	?	?	?
			1300s	1400s				
K4EN	21400	SA Su	1800w	2000w	SSB	300	CASUAL	ALL EXCEPT W4
			1800s	2000s				
K4G0	3900	DAILY	1300w	?	SSB	1000	?	?
			1300s	?				
K4G0	7290	DAILY	1400w	?	SSB	1000	?	?
			1400s					
W4ZM	3915	Ex SA Su	1330w	?	?	?	?	?
			1230s	?				
W5RIH	14050	Ex SA Su	1800w	1830w	CW	500	CASUAL	ALL
			1700s	1730s				
W5RIH	7205	Ex SA Su	1900w	2000w	SSB	500	NET	W4,5,7,6
			1800s	1900s				
K4HEN	3999	DAILY	1830w	2200w	?	?	?	?
			1830s	2200s				
K4HEN	3940	SU	2100w	2300w	?	?	?	?
			2100s	2300s				
W6CBX	7268 (5)	Ex Su	1830w	1930w	SSB	?	SKED	?
			1730s	1830s				
W6CBX	3791	SU	1630w	1730w	CW	?	NET	?
			1530s	1630s				
W6CBX	3869	SU	1730w	1830w	SSB	?	NET	?
			1630s	1730s				
W6CBX	3869	Ex SA Su	0130w	0200w	SSB	?	NET	?
			0030s	0100s				
W6FAR	21050	SA	1600w	?	?	?	SKED	?
			1500s	?				
W6FB	7255	DAILY	2000w	?	LSB	?	NET	?
			1900s	?				
W6FS	3907	SU	1800w	1900w	?	?	?	?
			1700s	1800s				
W6FS	3950	SU	1700w	1800w	?	?	?	?
			1600s	1700s				
W6FS	3825	Ex Su	1700w	1800w	CW	?	?	?
			1600s	1700s				
W6FZC	7265	DAILY	1830w	1930w	SSB	?	NET	?
			1730s	1830s				
W6II	7255	DAILY	2000w	2230w	?	?	?	?
			1900s	2130s				
W6II	14315	SA	1800w	1900w	?	?	?	?
			1700s	1800s				
W6JF	3795	DAILY	0000w	0100w	CW	140	?	W6,7,5,ø
			2300s	2400s				
W6LK	3695	Ex SA Su	1530w	?	CW	?	NET	?
			1430s	?				
W6LK	1222mc	Ex SA Su	1545w	1630w	?	?	?	?
			1445s	1530s				
W6LM	3520	SA Su	1600w	?	CW	?	?	?
			1500s	?				
W6LM	7050	WE	0030w	?	CW	?	?	?
			2330s	?				
W6PLS	14070	Mo	1600w	1700w	CW	100	CASUAL	W2,4,ø
			1500s	1600s				
W6PLS	3907	SU	1800w	1900w	SSB	1000	NET	W6
			1700s	1800s				
W6PLS	3785	SU	1900w	2000w	CW	1000	NET	W6
			1800s	1900s				

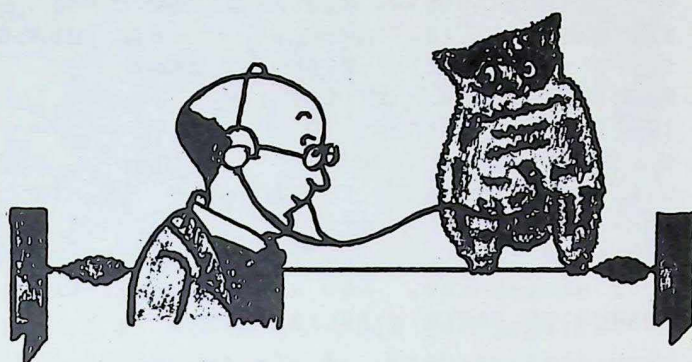


CALL	FREQ KCs	DAYS ON	GMT START	GMT END	MODE	POWER	ACTIVITY	AREAS BEST HEARD
W6YPM	14287	Ex SA Su	1700w 1600s	? ?	SSB	?	?	?
W6YPM	3885	DAILY	1630w 1530s	?	SSB	?	?	?
W6YPM	3885	DAILY	0030w 2330s	?	SSB	?	?	?
W6YPM	3850	Ex SA Su	0000w 2300s	? ?	SSB	?	?	?
W6YPM	7255	Ex SA Su	2030w 1930s	?	SSB	?	?	?
W7GOM	3860	DAILY	1530w 1430s	1630w 1530s	AM	?	?	?
W7GOM	7140	DAILY	1730w 1630s	1830w 1730s	CW	?	?	?
W70E	3640	DAILY	MONITORS THIS FREQ 0000 To 2400		CW	-	-	?
W70E	7140	DAILY	MONITORS THIS FREQ 0000 TO 2400		CW	-	-	?
K7WL	7010	DAILY	0400w 0300s	0500w 0400s	CW	?	CASUAL	?
W8FX	3663	DAILY	2300w 2200s	2345w 2245s	CW	300	NET	W1,2,3,4,8,9 VE3
W8DHF	3875	DAILY	0400w 0300s	? ?	SSB	?	?	?
W8HZA	3750	DAILY	0000w 0000s	?	CW	?	NET	?
W8JDV	50700	Mo We Fr	1515w 1415s	? ?	?	?	NET	?
W8JDV	7240	DAILY	1730w 1630s	?	?	?	?	?
W8JDV	3888	SU	1700w 1600s	?	?	?	NET	?
K8NG	21020	DAILY	1930w 1830s	2130w	CW	150	CASUAL	W6,7,5,4
K9CET	3605	DAILY	0600w 0500s	0800w 0700s	CW	350	?	?
K9CET	21300	SU	1500w 1400s	1800w 1700s	?	1000	?	?
W9DI	7273	Mo To SA	1500w 1400s	1600w 1500s	AM	100	CASUAL	W2,3,8,9
W9DI	50200	Mo To SA	0430w 0330s	0530w 0430s	AM/CW	20	CASUAL	W9
W9DI	144900	Mo To SA	1400w 1300s	1430w 1330s	AM	?	NET	W9
W9DI	3980	Ex SA Su	1500w 1600s	1600w 1700s	AM	100	?	W2,3,4,5,8,9
W9DI	3520	SA	1500w 1400s	1600w 1500s	CW	?	?	W2,3,4,5,8,9
W9SG	3520	Ex SA Su	1230w 1130s	1300w 1200s	CW	?	SKED	?
VE3IC	3800	DAILY	1600w 1600s	2200w 2200s	SSB	300	CASUAL	W1,2,3,4,5,Ø
G6BY	28495 (5)	Ex SA Su	1400w	1630w	AM	100	CASUAL	ALL Ws AND VEs

NO REPLY RE DST

OVERSEAS STATIONS PREVIOUSLY LISTED ARE ASSUMED TO MAINTAIN THEIR PUBLISHED SCHEDULES YEAR ROUND. STATIONS REPORTING FROM SOUTHERN HEMISPHERE, IF SUBJECT TO SO-CALLED DAYLIGHT SAVING TIME, SHOULD IDENTIFY THEIR OPERATING PERIODS IN TERMS OF SUMMER AND WINTER AS IT OCCURS IN THE NORTHERN HEMISPHERE AS MOST OOTC CONTACTS WILL BE IN THE LATTER. ALL STATIONS REPORTING SHOULD GIVE THEIR SUMMER AND WINTER OPERATING PERIODS EVEN IF THEY ARE IDENTICAL. STATIONS INCORRECTLY OR INADEQUATELY LISTED IN THIS OR PREVIOUS ISSUES OF SPARK GAP TIMES SHOULD REPORT ON A POST CARD THE CORRECT AND DESIRED LISTINGS FOLLOWING THE FORMAT ABOVE AS CLOSELY AS POSSIBLE. TO BE LISTED IN THE JUNE ISSUE YOUR NOTICE SHOULD REACH THE EDITOR NOT LATER THAN APRIL 23; FOR THE AUGUST ISSUE NO LATER THAN JUNE 23; FOR THE OCTOBER ISSUE NO LATER THAN AUGUST 23.





## INTELLIGENCE

UNWEPT, UNHONORED AND UNSUNG K1RTV COMPLETED AUDIT OF OOTC BOOKS FOR FOUR MONTH PERIOD ENDED OCT. 31, 1966; FOUND THEM CORRECT AS TRANSFERRED TO NEW TREASURER W5VA ON NOV. 1, 1966.

W9DI IS INTERESTED IN JOINING WITH OTHERS TO FORM A LOCAL OOTC NET ON 2 AND 6 METERS. HOW ABOUT W9AC, W9CG, W9CMG, W9DA, W9GAU, W9IX, W9NN, W9LR, W9OD, K9PZD, W9SG, W9UX, W9VJ, K9YRI GETTING TOGETHER? ALSO SOME 8'S ACROSS THE LAKE?

W1QAH CAME BACK FROM A DEER HUNT WITH A FIVE-DAY-OLD KITTEN LOST IN THE WILDERNESS. NOW HE'S RAISING SAME. NICE GOING. HOW HE CHECKED TIME OF BIRTH NOT TOLD.

W8AXR RETIRES MAY 1967 AND THEREAFTER WILL BE "ON" ALL HOURS 3880-3900SSB, 3550 3570 CW, 14270 AND 21400 SSB. A FREE GRID LEAK TO THOSE WHO QSO HIM BEFORE 6-1.

W1AYZ, A RHODE ISLAND "BROWNIE" GOT THRU THE WINTER BY TAKING A DAILY MORNING DIP IN THE SEA. ONE SUB-ZERO MORNING FOLLOWING THE DIP HE HAD TO USE PRE-HEATED COMB TO GET THRU THE ICICLES IN HIS HAIR.

W3FIU SAYS HE IS PRACTICALLY A TRAVELING SALESMAN. BOY, WHAT STORIES HE MUST HAVE. FISH FOR THEM ON 14220 SSB. HE IS "ON" IRREGULARLY.

TOO BAD THE NEWSPAPER PHOTO FROM PHILADELPHIA PUBLIC LEDGER OF APR. 23, 1923 OF OUR NEW MEMBER HENRY CONARD, THEN 3BQP IS NOT QUITE CLEAR ENOUGH TO REPRODUCE HERE, BUT HE WAS A HANDSOME TEEN-AGER HOLDING MICROPHONE BORROWED FROM A LIMOUSINE. HENRY, STARTING AT 11 YEARS HAS 20 WATT TX USING "S" TUBE RECTIFIERS.

WE'VE HEARD OF THE I.O.O.B. BUT NOW THERE IS THE OLD BUZZARDS' CLUB COMPRISING 2D AND 3D DISTRICT RETIRED HAMS MEETING ON 3905 KC WEEKDAYS AT 1830 GMT. (MAYBE 1730 AFTER MAY 1ST) W2NA AND K2BX HAVE JOINED. OOTERS INVITED TO CHECK IN.

W9FHU IS ON 7020 (10) KC EARLY MORNINGS AND LATE EVENINGS NEARLY EVERY DAY.

W8RZ, RECENT JOINEE, RETIRED MARCH 31 ST.

W7UGA HAS JOINED THE MORSE TELEGRAPH CLUB.

W2LV RETIRES FROM AMERICAN BROADCASTING MAY 1ST AND WILL RECEIVE THE NAB ENGINEERING ACHIEVEMENT AWARD FOR 1967. HE SUGGESTS EARLY HISTORY OF RADIO BE DOCUMENTED. THIS WAS WELL DONE IN A 64 PAGE BOOK ENTITLED RADIO PIONEERS (1945); DOCUMENTS DEVELOPMENTS FROM 1850 THRU 1925. ARTHUR H. LYNCH, W4DKJ, WAS ON THE EDITORIAL BOARD, COULD PROBABLY GIVE MORE INFORMATION IF NEEDED.

W5UY, WITH AN EXPLORATION COMPANY (OFF-SHORE OIL) MADE FIELD TRIPS TO VENEZUELA DURING FEBRUARY AND MARCH AND NOW IS PROBABLY AT WORK OFF VANCOUVER ISLAND, B.C.

W8JVD IS PROPRIETOR OF THE GRAY HISTORY-OF-WIRELESS MUSEUM AT MASON, OHIO. CURRENTLY HE'S WORKING UP A HISTORICAL ON CROSLY FOR THE AWA.

W2IR, NOW EDITOR-IN-CHIEF OF THE PORTIA LAW JOURNAL, IS HELPING A FRIEND TO COMPLETE A FILE OF ELECTRICAL EXPERIMENTER 1913-1915. PLEASE REMEMBER THIS DURING YOUR SPRING HOUSE-CLEANING.

K1BD AFTER A LAPSE OF 50 YEARS VISITED W2FG IN HIS NEW YORK OFFICE. CONVERSATION SUBJECT NOT REVEALED. PROBABLY TRADED HAIR TONIC FORMULAS.

W2IY, ONCE A REGULAR PARTICIPANT IN THE NORTHEAST OOTC ROUND-TABLE IS NOW LIMITED IN HIS ACTIVITIES. FORTUNATELY HE CAN STILL READ MAIL IF ADDRESSED TO 367 WEBSTER AVE., JERSEY CITY, N.J. 07307.

W2ZK CAME OFF VICTOR IN A BOUT WITH HOSPITAL AND NOW WANTS TO GET GOING ON OOTERS RECORDING PROJECT. SEE PAGE 22, FEBRUARY SPARK GAP TIMES.

W4AX, STILL ON THE GRIND UNTIL 1968, IS GENERAL COMMUNICATIONS MANAGER FOR WU AT ARLINGTON, VA. ACTIVITY INCLUDES SUPERVISION OF THE GLOBAL AUTODIN NETWORK.

(CONTINUED ON NEXT PAGE)



BELOW MAY PROBABLY BE THE FIRST "KING-SIZE" QSL CARD. IT MEASURES BEFORE REDUCTION  $5\frac{1}{4}$ " x  $8\frac{1}{2}$ ". APPARENTLY IT PICTURES STATION 8AUX OPERATED BY THE SON OF ONE D. H. VOLZER BEFORE MIGRATION TO N.M.

## DR. ELMER A. VOLZER

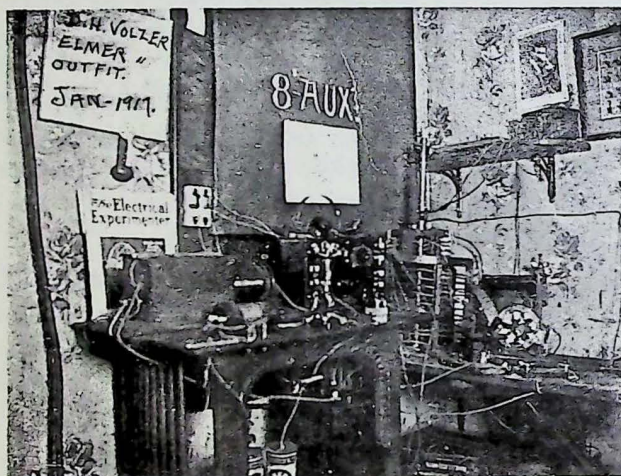
3919 Smith Ave. S. E., Albuquerque, N. M.

Bernalillo County

# W5SA

2nd Station W5KUQ, Jemez Springs, N. M.

Sandoval County



W4AZ SEEMS TO STRADDLE HIS TIME BETWEEN FLORIDA'S LIGHTHOUSE POINT AND HAWORTH, N.J. ATTENDING TO THE PROBLEMS OF HIS BROADCAST INDUSTRY CLIENTS. HE ALSO MC'S WHAT HE CALLS A "LOOSE ORGANIZATION OF RETIRED HAMS", NOW AT LARGE IN FLORIDA AND CALLED THE GOLD COASTERS AND ISSUES A NEWS LETTER FOR THEIR BENEFIT. IF YOU SHOULD TANGLE WITH THIS GANG IT WOULD BE SAFER TO BRING YOUR OWN OR ELSE A PILLOW TO FIT UNDER A GATE-LEG TABLE.

W5AQN IS MOSTLY ON NAVY MARS CW AND LOCAL EMERGENCY AND TRAFFIC NETS 3770 - 3780.

W4BA AND W4HA HAVE DAILY SKED BETWEEN 14200 AND 14350 AT UN-NAMED TIMES. HUNT.

W6YPM FLARED AS A NEW METEOR IN THE WESTERN SKY. HE GOT OUT A LETTER TO 30 OOT'S FOUND 10 AVAILABLE FOR A WEEKLY LUNCH. AT THE LAST MINUTE ONLY 4 WERE HUNGRY ENOUGH TO MAKE IT, SO THE DEAL WAS SCRUBBED. NICE TRY, ERV. HE ALSO FOUND 9 EACH INTERESTED IN FORMING AN 80 AND 40 METER NET. LET'S SEE WHAT COMES OF THAT. SGT WILL REPORT WHAT DOES AND WHAT DOESN'T WORK. ERV WAS ONCE W9FAV, MOVED TO CALIF. 1945, SALES-MANAGED PAINT COMPANIES BEFORE RETIREMENT. NOW A COLLECTOR, HAS MUSEUM OF EARLY WIRELESS GEAR.

W1BVI SENT IN COPY OF A NEWSPAPER STORY (NEWPORT R.I. DAILY NEWS) FEATURING HIS FELLOW CITIZEN BENJAMIN J. REYNOLDS WHO IN 1905 IS BELIEVED FIRST PERSON TO RECEIVE A DISTRESS CALL FROM AN AMERICAN NAVAL VESSEL. BEN WAS THEN OPERATOR AT THE NAVAL TORPEDO STATION ON GOAT ISLAND.

W5NW, SOUPY GROVES, 1ST V.P. OF ARRL AND RETIRED FROM HUMBLE OIL CO., GOT AWAY FROM IT ALL BY GOING TO SEA. WHY NOT? IF YOU'RE GOING TO RETIRE TO YOUR HOBBY NO HARM GETTING PAID FOR IT.

FRANK GEISEL #731 THREATENS TO RENEW HIS HAM LICENSE AFTER HIS APRIL 1967 RETIREMENT FROM RCA STATION KPH WHERE HE SUPERVISES 15 R/OS, 3TT OPRS AND MAINTENANCE TECHNICIANS WHO KEEP ON THE AIR 12 TX'S RANGING FROM 3 TO 20 KW.

WE HAVE 22 MEMBERS WITH TWO LETTER Z CALLS, SOME HOLDING THE SAME CALL BEFORE PREFIXES W AND K WERE ESTABLISHED. AMONG THESE IS RECENT JOINEE CHARLES J. MURRAY, W8ZA WHO WAS ISSUED 8ZA IN 1920 THE "AWARD" BEING BASED ON THE EXISTENCE OF A SEPARATE 5KW POWER SUPPLY. IT WOULD BE INTERESTING IF OTHER HOLDERS OF EARLY TWO LETTER Z CALLS WOULD SEND IN THE QUALIFICATION WHICH RULED IN THE ASSIGNMENT OF SUCH CALLS.

W5RU IS ACTIVE IN THE INTERNATIONAL MISSION RADIO ASSOCIATION. SEE ARTICLE ON PAGE 72 OF FEBRUARY 1967 CQ. WE'VE ASKED ROY TO WRITE A PIECE ON IMRA. HERE IS A CONSTRUCTIVE ACTIVITY WHICH SHOULD ATTRACT MANY OF OUR MEMBERS.

THE SAME CQ ALSO SHOWS ON PAGE 77 W1BB COMPILING CALL SIGNS WHILE CRUISING THE HIGH SEAS IN THE FAR EAST.

W1AOG WANTS TO BUY 1921 OR 1922 DEPT. OF COMMERCE CALL BOOK. HE'S BACK FROM FLA.





SAMPLES OF OUR SOUTH AMERICAN COUNTER-PARTS ARE SHOWN ABOVE. READING FROM LEFT TO RIGHT, TOP TO BOTTOM THEY ARE: LU4DA, LU7CB, LU9AN  
LU2AO, LU2WE, NO CALL, LU3AC, 5EU, 3AJ, 8AAF  
LU8DE, 8BE, 3AX, 6EU, 8AD, 6EJ, 6AK - ALL LU  
LU5BE, 1CK, 6BI, 7EL, 9DJW, 9BG - ALL LU  
W6FB DUG OUT HIS DEC. 1926 LOG WHEN HE WAS PHILLIPINE 3AA ON 40 AND FOUND HE WORKED: 6AMM, 6AZS, 6BQ, 6CCR, 6CKV, 7ALN. HE HEARD: 5KN, 6ADP, 6AKM, 6BDL, 6BJH, 6BJX, 6BKN, 6CCU, 6CLP, 6ER, 6MU, 6NX, 6OR, 6PV, 6RN, 7WB, 9CAJ, 9DKM, 9HP. ANY OF YOU BOYS NOW AROUND? WHAT DID YOU USE? SEND PHOTO OF THAT EARLY STATION, PLEASE.

WØDIB AND XYL NOW CLAIM FOOT-PRINTS IN ALL 50 STATES AFTER A 1966 TRIP TO HAWAII INCLUDING LIMOUSINE TOUR OF OAHU. EXCLUDING BEACH BEAUTIES AT WAKIKI THE HIGH SPOT INCLUDED NEW SMELLS AT THE ISLAND OF HAWAII ANTHEMIUM GARDENS.

W4ZM ATTENDED MIAMI HAMOBOREE JAN. 21, 22 AND MET THERE W1AE AND W2BA. SGT COULD HAVE USED A DISPATCH ON THIS BUT THOSE FLORIDIANS ARE SO MODEST.

W1GV IN FLORIDA FEBRUARY AND MARCH "ON" WITH W1PU MOST DAYS, 21418 (6). OCEAN TEMPERATURE 58 DEGREES DOWN THERE.

K9PZD WINDS UP SIX YEARS OF SCHOOL BOARD ACTIVITY IN APRIL BUT CONTINUES AS TREASURER OF AN ARCHITECTURAL AND ENGINEERING FIRM.

BEGINNING WITH THE FEBRYARY 1967 ISSUE THE LIBRARY OF CONGRESS WILL REGULARLY RECEIVE ALL SUBSEQUENT ISSUES OF SPARK GAP TIMES AND A COPY OF THE CLUB ROSTER BI-ANNUALLY. BLUE BOOK WILL BE FILED AND REGISTERED WHEN COMPLETED. IF EVER THERE SHOULD BE A CONGRESSIONAL INVESTIGATION OF AMATEUR RADIO, USEFUL SOURCE MATERIAL WILL BE HANDY.

APR 67

BEFORE JUMPING TOWN LEAVE SPARK GAP TIMES FORWARDING MONEY WITH P.O.

## POSSIBLE FUTURE ARTICLES FOR SGT

FESSENDEN'S 60,000 CYCLE ALTERNATOR STATION AT BRANT ROCK, MASS.

ACTIVITIES OF JOHN HAYS HAMMOND AT GLOUCESTER, MASS.

CONCLUSIONS DRAWN FROM WESTERN ELECTRICS 1920 PHONE OPERATIONS AT DEAL BEACH, N.J.

CAREER OF JACK BINNS.

PRE-BROADCAST ACTIVITIES OF FRANK CONRAD.

THE RISE AND FALL OF THE ELECTRO IMPORTING Co. (PIONEERED IN HAM MAIL-ORDER)

CAREER OF DR. GREENLEAF WHITTIER PICKARD, SK 1956. W1FUR, EARLY OOTC MEMBER.

CAREER OF LESTER SPANGENBERG, 2ZM, W2MB. SK 1958. ONCE ACTIVE NORTHERN N.J.

CAREER OF BILL HALLIGAN W9AC.

OPERATING PERSONNEL AND DESCRIPTIONS OF SHORE STATIONS ON MANHATTAN ISLAND PRIOR TO 1920.

MEMOIRS OF SHIP OPERATORS WHO COPIED PRESS FOR NEWSPAPERS PRINTED AT SEA.

OOTC MEMBERS WHO CONTRIBUTED TO QST BEFORE 1920 AND WHAT THEY WROTE ABOUT.

RESUME OF EXPERIMENTS IN INDUCTION WIRELESS, 1850 TO 1890.

PIONEERS IN COMMERCIAL TRANS-ATLANTIC RADIO TELEPHONY.

PREVIOUSLY UNPUBLISHED REPORTS AND RECORDS OF MAHLON LOOMIS, CIRCA 1872, WHO USED STATIC ELECTRICITY TO POWER PRIMITIVE WIRELESS COMMUNICATION.

THE GENESIS AND DEVELOPMENT OF SSB.

NONE OF THESE ARTICLES IS IN PREPARATION TO OUR KNOWLEDGE. THEY ARE LISTED AS SUGGESTIONS TO MEMBERS WHO HAVE SOME WRITING AND RESEARCH ABILITY. EACH ARTICLE SHOULD NOT EXCEED 350 WORDS. (LONGER ARTICLES WHICH TREAT THE SUBJECT IN AN INTERESTING MANNER COULD APPEAR IN INSTALLMENTS) PICTURES AND DIAGRAMS IN SUPPORT OF THE TEXT ARE ESPECIALLY WELCOME. NON-WRITING READERS ARE INVITED TO SUBMIT SPECIFIC SUBJECT ON WHICH THEY WOULD LIKE ARTICLES. THEY WILL BE ADDED TO THE ABOVE LIST WHICH REPRESENTS ONLY A SMALL FRACTION OF THE SUBJECTS WHICH COULD BE DEVELOPED FOR LATER ISSUES OF SGT.



## EXTRACTS from LETTERS



FROM W1NQ: "DEAR OLD OLD TIMERS - GREETINGS AND SALUTATIONS - IS THE WAY I COMMENCED MY TWO FORMER LETTERS, SO WHY NOT THE THRID. DON'T THINK I CAN BE ACCUSED OF BEING A BIG WIND-BAGGER, WITH ONLY THREE LETTERS TO THE GENERAL MEMBERSHIP IN TWENTY YEARS. ALTHO SUCH A REPUTATION WAS ESTABLISHED BY MY MANY YEARS ON THE AIR SINCE THE CLOSE OF THE LAST WAR. IT SURE IS A GRAND AND GLORIOUS FEELING TO HAVE A TORPEDO 3 CRYSTAL MIKE IN YOUR RIGHT HAND, WITH YOUR LEFT RIDING THE GAIN CONTROL, TALKING INTO 30 WATTS OF HI-FI SPEECH WHICH IS DRIVING AN HONEST TO GOODNESS 600 WATTS OF POWER, CAPABLE OF MODULATING AN 800 WATT CARRIER 100%, WHICH IS RADIATING OUT THRU TWO FULL WAVES IN PHASE (ON 75 METERS) 90 FEET ABOVE THE GROUND. I THINK THE REAL SECRET OF AMATEUR RADIO FASCINATION, IS THE FACT THAT EACH HAM OWNS HIS OWN PRIVATE SOAP-BOX AND IS DOUBLY EXCITING WHEN HE BUILDS HIS OWN GEAR.

JUST A FEW WORDS ABOUT THE PAST TWO DECADES OF OOTC HISTORY AS THIS THIRD LETTER MAY BE THE LAST. HAVE A BIRTHDAY COMING UP ON APRIL THE 8TH - AND WHEN A MAN HAS BEEN LIVING FOUR YEARS, BY GRACE, ANYTHING CAN HAPPEN. THE BELL MAY RING ANYTIME TO REPORT TO THE MASTER OF THE GOOD SHIP O.O.T.C.

IN THE FIRST EIGHT YEARS ALL CLUB BUSINESS WAS CONDUCTED OVER THE AIR AT THE REGULAR THURSDAY EVENING ROUND-TABLES. THE SECRETARY KEPT COMPLETE MINUTES OF ALL SESSIONS UP UNTIL JAN. 6, 1955.

AFTER THIS THE PRESIDENTS SEND IN REGULAR REPORTS AND COPIES OF ALL THEIR

OFFICIAL CORRESPONDENCE FOR THE OOTC ARCHIVES. FIRST, SKIPPER GREENE, W1CPI; SECONDLY, EARL E. CLINE, SR. W4PPZ, AND OUR CURRENT PRESIDENT BERT OSBORNE, W4MF. THESE THREE FINE GENTLEMEN HAVE BEEN VERY CONSCIENTIOUS AND METICULOUS IN THEIR RECORDS AND REPORTS, CONSEQUENTLY, ALL OOTC RECORDS ARE EXTREMELY SOLID RIGHT BACK TO THE EARLY FALL OF 1947.

THANKS TO MY OLD COLLEGE CHUM, PERE MAHONEY, W1TN, THE INCORPORATION PAPERS OF OOTC WERE FORMALIZED AND COMPLETED ON AUG. 2, 1966. THE OOTC ARCHIVES WERE CLOSED AS OF THIS DATE. THE CLUB NOW BECOMES BIG BUSINESS, IN A MANNER OF SPEAKING. AS PERE SO CAREFULLY EXPLAINED, THE CLUB IS NOW ASSURED ITS CONTINUITY, COHESION AND SUCCESSION THROUGH YEARS AHEAD."

W1NQ ENCLOSED WITH HIS LETTER A COPY OF THE LAST MINUTES OF THE OOTC ROUND-TABLE - THE 210TH, ON JAN. 6, 1955. THESE ARE PASSED OVER TO HISTORIAN RASER FOR INCLUSION IN HIS INSTALLMENT FOR 1955, NOT TOO MANY ISSUES AHEAD.

W9DI REPORTS GETTING CALL BOOK OF SOME 1500 HAMS IN WESTERN ELECTRIC AND BELL TELEPHONE LABS, 250 IN 9TH DISTRICT ALONE. HE THINKS A NUMBER OF THESE ELIGIBLE FOR OOTC AND VOLUNTEERS TO FIND OUT. ALSO SUGGESTS WE GO AFTER THOSE WHO STARTED 1925-1940 AND MAKE THEM SORT OF PRE-MEMBERS. PROBATIONERS, MAYBE?

W0KFW COMES UP WITH THE PHOTO BELOW DATED MAR. 9, 1917. HE DESCRIBES THE STATION AS A "REAL MESS". WEARING KNICKERBOCKERS, REPRESENTING THE JUVENILE STATUS SYMBOL OF THOSE DAYS, WILL LOOKS AS IF HE HAS JUST BEEN CAUGHT SNITCHING TIME FROM HIS HOME WORK.



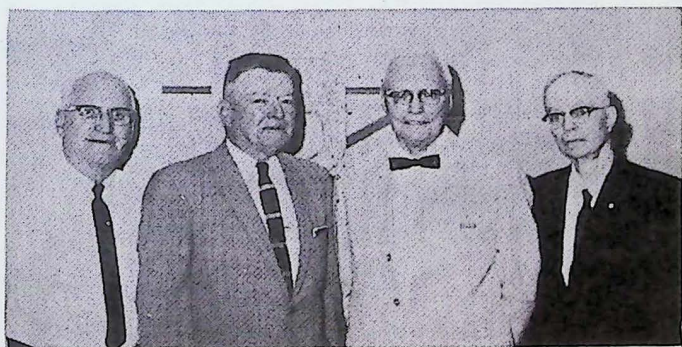


W6EA HAS A CARD BEARING LEGEND: "OOTC No. 372/9EA-K6EA." UPON PRESENTING IT HE GETS STONY STARES. EVEN HAMS STARTING 60 YEARS AGO SAY THEY NEVER HEARD OF OOTC. EVEN RADIO DEALERS IN BUSINESS TWENTY YEARS OR MORE LOOK BLANK. WHAT ARE WE DOING ABOUT IT?

THE OOTC QSL CARD IS ONE APPROACH SIMPLE ARITHMETIC. IF 100 MEMBERS SEND OUT 100 CARDS 10,000 HAMS WILL KNOW WHAT OOTC IS. IF EACH ONE OF THESE MENTIONS OOTC TO JUST ONE OTHER HAM THEN 20,000 HAMS WILL KNOW WHAT OOTC IS.

W6EA WANTS TO HANDLE SOME TRAFFIC ON 20 METERS. IMAGINE THAT. IS A TRAFFIC Famine DEVELOPING? WHO WILL WRITE AN ARTICLE ON THIS?

W3WR IN HIS LETTER OF 12-19-66 ENCLOSED COPY OF A CLIPPING FROM THE CAMDEN COURIER OF JUNE 13, 1916 TELLING OF HIS APPOINTMENT AS DIRECTOR OF THE SOUTH JERSEY RADIO ASSOCIATION AT ITS INITIAL ORGANIZATION. BILL APPEARS IN THE PHOTO BELOW, HIS HEAD FULLY UPHOLSTERED, WITH THREE FELLOW CHARTER MEMBERS 3LY, W2BQ AND 3HO AT THEIR GOLDEN JUBILEE JUNE 23, 1966.



W2BXY, AND OTHERS, WOULD LIKE A SELL & SWAP COLUMN IN SGT. ANYBODY WILLING TO HEAD THIS UP - GET THE ADS - SUBMIT THEM ALL IN ONE "BLOCK" TO THE EDITOR ON THE 10TH OF EACH ALTERNATE MONTH?

W6QV, ALSO A SWAP BOOSTER IS LOOKING FOR A PAIR OF BRANDES NAVY TYPE HEADPHONES WITH BALL JOINT IN CASE INSTEAD OF SWIVEL.

W1AOS RELAXES BY FLYING FREIGHT RUNS FROM DEEP RIVER AND WINDSOR LOCKS, CONN. TO ALBANY, N.Y. RECENTLY FLEW 5 HOURS OVER AZTEC. A VICTIM OF HIGHWAY CUT-THRU HE WAS EVICTED FROM HOMESTEAD OF 5 GENERATIONS PLUS WATER-WHEEL POWER PLANT, OF 25 KW CAPACITY.

APR 67

WALLY LELAND, NOW IN SUN CITY, ARIZONA TELLS US WE SKIDDED IN LISTING HIM AS W7WL. IT'S K7WL OF COURSE.

K2CR SUGGESTS SOLICITING GARAGE DOOR OPENER MANUFACTURER PERMA-POWER CO, 5740 NORTH TRIPP AVE., CHICAGO. HE LIKES THE OPENER'S 72 COMBINATIONS - RF PLUS AUDIO TONES. ALSO SUGGESTS THAT MEMBERS HAVING BOOKS OF INTEREST IN OUR FIELD OF COMMUNICATIONS SEND IN SHORT REVIEWS. FOLLOWING, A SAMPLE:

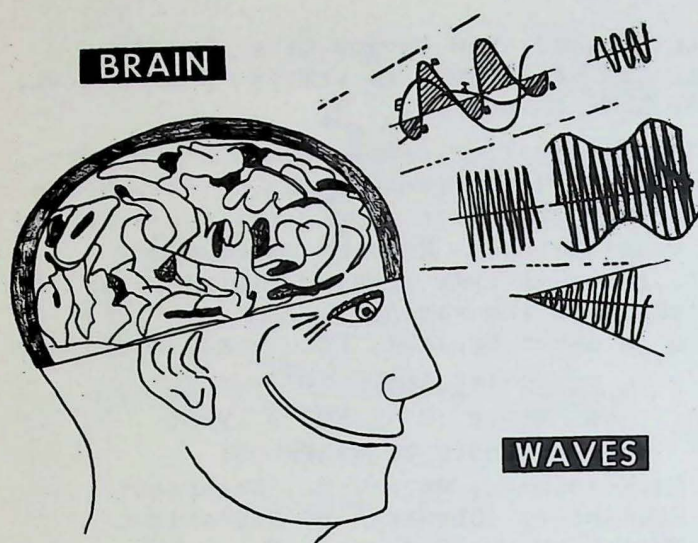
A PICTORIAL ALBUM OF WIRELESS  
AND RADIO (1905 - 1928)  
BY HAROLD S. GREENWOOD

EXPERIMENTAL, RECEIVING, BROADCAST EQUIPMENT. DOCUMENTARY HISTORICAL EDUCATIONAL. DEDICATED TO SCIENTISTS, MATHEMATICIANS, ENGINEERS, EXPERIMENTERS AND AMATEURS WHO MADE PRESENT-DAY RADIO POSSIBLE. PUBLISHED BY FLOYD CLYMER, 1268 SOUTH ALVARDO AVE., LOS ANGELES, CALIFORNIA. \$12.50

K1FF WHO OPERATES QSL PRINT ENTIRELY INDEPENDENT OF OOTC SENDS THESE REMINDERS; "I DO NOT PRINT THE SEALS OR OFFICIAL CLUB STATIONERY. I PRINT ONLY THE OOTC QSL CARDS. HOWEVER, I WILL PRINT OTHER PERSONALIZED STATIONERY FOR THE MEMBERS. CHECKS SHOULD BE MADE ONLY TO VENSON G. BLAISDELL, SR. - NOT TO OOTC. ALTHO FORMAL TEXT AND ILLUSTRATION ARE IN BLACK INK ONLY, MEMBERS CAN HAVE CHOICE OF COLORS FOR THEIR CALL LETTERS AND QTH. ON EITHER OR BOTH SIDES OF CALL LETTERS THERE IS ROOM FOR ARRL INSIGNIA AND IF MEMBER WISHES IDENTITY WITH MASONS, K OF C OR ODD FELLOWS, ETC. I WILL BE HAPPY TO ADD ANY OF THIS AT NO EXTRA COST. HOWEVER, OTHER CHANGES IN THE STANDARD SET-UP WILL COST 50¢ TO \$1 EXTRA ON WHICH I WILL QUOTE BEFORE PRINTING. BELIEVE ME, I AM NOT GETTING RICH AT CLUB MEMBER'S EXPENSE BUT I SURE ENJOY DOING THIS FOR OUR CLUB."

LU2AO SUGGESTS SOME MEMBER TRANSLATE THE SPANISH-WRITTEN SOUTH AMERICAN PAGE INTO ENGLISH SO THAT WHEN PUBLISHED IN SGT MORE MEMBERS WILL KNOW WHAT IS GOING ON DOWN THERE. ANY TAKERS? TO PATENT A RECENT INVENTION HE WILL GO TO WASHINGTON AND THEN TO NEW YORK CITY IN JULY OR AUGUST. HE ENCLOSES SAMPLE OF A COLOR PICTURE POST CARD MADE UP AS HIS QSL CARD. THIS IS FURNISHED BY HIS GOVERNMENT FREE TO ALL LU'S.





W3ENK AND W30Y SUGGEST AN ANNUAL QSO PARTY. GOOD IDEA. WHO WILL MASTER-MIND THIS PROJECT AND BE THE GRAND NATIONAL MC? SGT WILL SUPPORT IT WITH FULL PUBLICITY. DON'T PUSH AND CROWD, BOYS.

W9NN SUBMITS HOT IDEA. CHECK YOUR OLDEST QSL CARDS AGAINST OOTC ROSTER. WHERE YOU FIND A "MATCH" SEND THAT MEMBER HIS OLD CARD. HE'LL BE SURPRISED. W9NN HAS TRIED IT. JUST ANOTHER WAY TO "AMALGAMATE" OUR SCATTERED MEMBERSHIP.

W4AX WILL VISIT EXPO 67 IN EARLY JUNE WITH XYL. OUT OF THIN AIR COMES THIS SUGGESTION: FOR 20 MINUTES FOLLOWING HIGH NOON BE AT THE PROGRESS OF COMMUNICATIONS EXHIBIT (SEE PAGE 3) WEARING PROMINENTLY YOUR OOTC LAPEL PIN OR ENLARGED FACSIMILIE THEREOF. IN THAT WAY OLD OLD TIMERS WILL HAVE A FAIR CHANCE OF MEETING EACH OTHER WITHOUT PRIOR APPOINTMENT.

W6EA ASKS IF THE CLUB WILL HAVE A CAR DECAL. MAYBE YES. MAYBE NO. IF 200 OR MORE MEMBERS ORDER THE CLUB QSL CARD WE'D SAY "YES". IF ONLY A HANDFUL USE THE CARD WE'D GUESS "NO". IF ANYONE HAS A PLAN WHICH WILL INFORM 100,000 HAMS THE MEANING OF OOTC WITHOUT EXHAUSTING THE BANK ACCOUNT, LET HIM REVEAL IT. SEE W6EA'S OTHER REMARKS ON PAGE 21.

HOORAY! W8DHF OFFERS TO BE NET CONTROL FOR AN OOTC NET TO FOLLOW THE CLOSE OF OOTC ROUND TABLE BY KITZH EACH THURSDAY AT 0100 GMT (2400 BEGINNING MAY) ON 3940. HE'D LIKE A HELPER. THIS WOULD BE THE SECOND OFFICIAL OOTC NET TO COME INTO OPERATION, TO OUR KNOWLEDGE. THE ROUND TABLE IS NOW PRETTY WELL LOADED.

PAGE 22

W9SG SUGGESTS OOTERS "MEET" ON THE FOLLOWING FREQUENCIES: 3535, 3635, 7035, 7135, 14035, 14135, 21035, 21135. THE ODDS AGAINST FINDING A MEMBER AT RANDOM TIMES ON ANY ONE OF THESE FREQUENCIES MUST BE 5000 TO 1. HOWEVER YOU ARE INVITED TO TRY. SOME OF THESE FREQUENCIES, OR THOSE CLOSELY ADJACENT, ARE ALREADY USED AT SPECIFIED GMT'S AS FOLLOWS:

3535	0100-0130	VE2CP	DAILY
3540	1900- ?	W7OE	DAILY
7035	1400- ?	W8BKM	FR SA SU
7040	2100- ?	W7OE	DAILY
14050	1200-1330	W2DXX	DAILY
14050(50)	1900-2100	W2NR	DAILY
14050	0200-0700	W9OD	DAILY
21036	0300-1600	VU2JA	DAILY
21050	1600-1900	WIUE	Mo THRU FR

REMEMBER THAT THE ABOVE TIMES MAY BE EFFECTIVE ONLY THRU APRIL. IF THE STATES REPRESENTED ADOPT DAYLIGHT SAVING YOU SHOULD SUBTRACT ONE HOUR BEGINNING MAY. W9SG HIMSELF IS ON 3520. SEE PAGE 16.

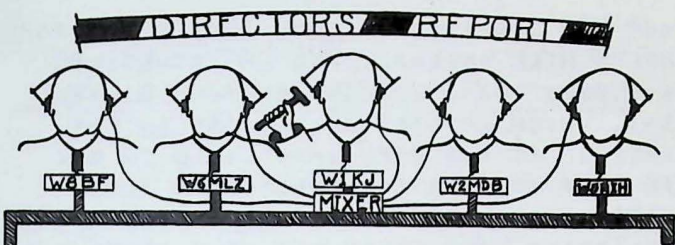
SOME EYEBROWS ARE RAISED ABOUT PUTTING MCW ON A3 BAND. W1LR SAYS HE'S BEEN DOING IT OVER THE PAST YEAR ON 51.15 MCS. WITH REVIVED ROTARY SUCH AS DESCRIBED IN FEBRUARY ISSUE. HOW ABOUT PUTTING SINE WAVE SIGNALS ON TAPE, THEN PLAYING BACK WITH RECORDER IN FRONT OF MICROPHONE ALONG WITH OPERATOR'S COMMENTARY? WOULD THAT BE TICKET-PROOF?

W1AMP SUGGESTS WE HAVE A "LOST & FOUND" DEPT. IN SGT. BOTH DECEMBER AND FEBRUARY ISSUES GAVE NAMES OF PEOPLE IN THE "LOST" CATEGORY. SO FAR NO FINDS HAVE BEEN REPORTED. WE DOUBT THE EXISTENCE OF MUCH SLEUTHING TALENT IN OOTC. TO DEVELOP THE IDEA FURTHER, SUGGESTIONS ARE INVITED. HE ALSO PROPOSED THAT WE IDENTIFY BY A SYMBOL IN THE NEXT ROSTER THOSE MEMBERS WHO WERE COMMERCIAL OR MILITARY OPERATORS. SGT WILL BUY THAT, PROVIDED THE REPORTING IS DONE EXCLUSIVELY ON THE PRE-PAID REPLY POSTCARD INCLUDED WITH THIS ISSUE. IT IS NOT PRACTICABLE TO "LIFT" AND TABULATE SUCH DATA FROM MISCELLANEOUS LETTERS. THE PRESENT TABULATION LOAD - ROSTER CHANGES, LISTENING POST, CLOCK WATCHERS, NET DIRECTORY, PUDDLE JUMPERS, 1966 PURCHASES, ETC. IS ALREADY PRODIGIOUS. WHY DON'T YOU OLD PROFESSIONAL OPERATORS DROP A POSTCARD TO THE ED. STATING WHERE YOU WERE THEN AND WHAT YOU ARE DOING NOW. YOU OPS ARE MOSTLY LOST TO EACH OTHER.

YOU'D BE SUPRISED AT NUMBER OF SGT'S RETURNED MARKED 'UNDELIVERABLE'

APR 67





SOMETIMES NO REPORT IS A CONSTRUCTIVE REPORT. SUCH IS THE CASE AS SGT GOES TO PRESS FOR APRIL. WE KNOW THAT A MAJORITY OF DIRECTORS HAVE STEAM UP IN THEIR BOILERS. THERE IS WORK TO BE DONE. BUT THE BOARD IS ON DEAD-CENTER. EACH IS LOOKING AT THE OTHER, AWAITING SOME KIND OF "SIGNAL".

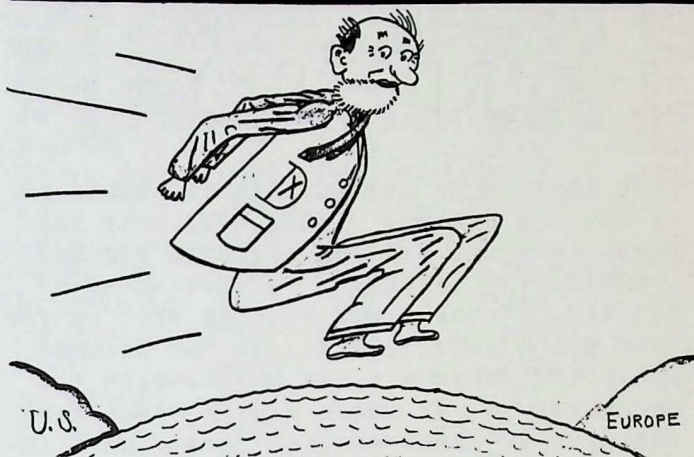
THOSE WHO HELPED IN DRAWING UP THE NEW BY-LAWS THOUGHT THAT EVERY CONTINGENCY HAD BEEN ANTICIPATED. THE FACT THAT THE BOARD COULD BE STALLED ON DEAD-CENTER, WITH STEAM IN ITS BOILERS, OCCURED TO NO ONE. SO NOW WE AWAIT SOMEONE, AND IT COULD BE A NON-ELECTED MEMBER, TO SUPPLY THE MISSING BY-LAW. THE EVENT IS REALLY CONSTRUCTIVE BECAUSE IT POINTS UP A LACK. LIKE ASSEMBLING AN AUTOMOBILE AND LEAVING OUT THE ENGINE.

SOME OF THE DIRECTORS DID ASSIST THE SECRETARY IN MAILING OUT COURTESY COPIES OF SGT TO MEMBERS UNAWARE OF CHANGES MADE IN THE MAGAZINE. OVER THE SIGNATURE OF OUR LOCAL REPRESENTATIVE EACH WAS RE-INVITED TO SUBSCRIBE OR RENEW HIS LAPSED SUBSCRIPTION, ABOUT 125 IN ALL.

ASSISTED ACTIVELY BY W1DFS AND W1KC, DIRECTOR MCAULEY COMPLETED ARRANGEMENTS FOR THE CLUB'S PARTICIPATION IN THE ARRL CONVENTION AT SWAMPSCOTT, MASS. EVEN INCLUDING PROVISION FOR CONTINGENCIES SUCH AS ILLUSTRATED BELOW.



## PUDDLE JUMPERS



THE ABOVE GAY BLADE MAY BE MAKING HIS FINAL APPEARANCE. ONLY ONE COMPLETE LOG REPORT WAS RECEIVED, THIS FROM G6BY BELOW:

WØDIB 10MTRS AM 507 W 1-23-67 G6BY  
ALSO REPORTED AS "JUMPERS" BUT WITHOUT SUPPORTING LOG DATA WERE THE FOLLOWING: W1NRQ, W2DH, VE2BG, W1BB, W1DFS, W1TK, W1ZS.

TO DETERMINE "AREAS OF INTEREST" SGT HAD TO DO SOME EXPERIMENTING. SO FAR, CONTACTS WITH OTHER OOTC MEMBERS OVERSEAS, HAVE EXCITED LITTLE INTEREST AND THIS DEPT. IS NOW ON THE VERGE OF JOINING THE OMELET READY TO SERVE BELOW.

### EGGS WE HAVE LAID

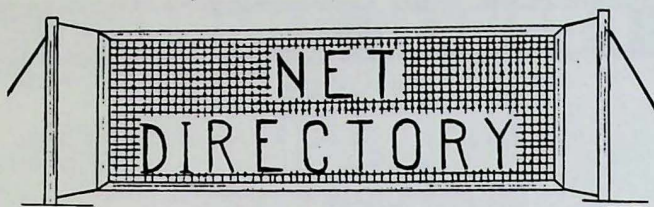
LISTENERS' REGISTRY PAGE 11 DEC. ISSUE  
WE GUESSED A SCORE OR MORE MEMBERS, HANDICAPPED, OFF-THE-AIR, WOULD BE LISTENING ONLY AT SPECIFIC TIMES AND BAND SEGMENTS. WE GUESSED WRONG.

THE POWER PACK PAGE 17 DEC. ISSUE  
WE GUESSED THAT PERHAPS 100 WOULD BE OPERATING THE FULL POWER LIMIT AND WOULD LIKE THEIR OPERATING TIMES LISTED. WE GUESSED WRONG.

MICRO MITES PAGE 12 DEC. ISSUE  
WE GUESSED THAT TWO SCORE WOULD BE TRYING OUT LOW POWER SOLID-STATE TX'S. JUST ONE SHOWED UP. APPARENTLY THAT FIELD IS FOR CBERS. WE GUESSED WRONG.

FICTION PAGE 20 DEC. ISSUE  
AS QST ONCE SPONSORED THE OLD MAN AND AS CQ HAD ITS SCRATCHI WE GUESSED THAT AN OCCASIONAL FANCIFUL ARTICLE WITH A LIGHTER TOUCH WOULD COME AS A RELIEF. WE GUESSED AT LEAST 50% WRONG ON THAT.





THIS SECTION IS ESTABLISHED IN ANSWER TO AN OBVIOUS DEMAND. PLEASE NOTE THAT THE STARTS ARE GMT AND ARE ADJUSTED FOR DAYLIGHT SAVING EFFECTIVE IN MOST AREAS BY MAY 1ST. THESE TIMES WILL BE USED IN THE JUNE AND AUGUST ISSUES. IN THE OCTOBER ISSUE THE TIMES WILL BE RE-ADJUSTED FOR REVERSION TO THE LOCAL WINTER TIMES PREVAILING. IN REPORTING NET DATA PLEASE INCLUDE SUMMER AND WINTER TIMES TO PREVENT ERRORS. FOLLOW THE FORMAT IN THE LISTENING POST. REPORT ONLY IN TERMS OF GMT. SO FEW REPORTED THE CLOSING TIME OF THESE NETS THAT IT HAS BEEN OMITTED. IF YOU WILL REPORT, WE'LL PRINT. THE MEMBERS LISTED BY CALL ARE PARTICIPANTS AND NOT NECESSARILY NET CONTROL STATIONS.

START	DAY	FREQ.	NAME	OOTER
0000	TH	3940	00TC RT AM	W1MPP
0000	TU	3558	VWOA	W3ENK
0000	DAILY	3570	W VA CW	W8HZA
0000	?	3970	EYE BANK	K2WW
0000	1ST WE	3580	AWA	W3KH
0000	Ex SA Su	3869	SARO	WB6TYO
0030	TH	3940	00TC-SSB	K1TZH
0030	Mo THRU FR	3869	SARO	W6LC
0200	TU	1815	GRAY HAIR	W1BHD
0400	TH	3930	EARN	W6LC
1100	?	3970	EYE BANK	K2WW
1100	DAILY	3525	CHICKEN	W1AOS
1200	Ex Su	3960	BARNYARD	W1UE
1200	DAILY	7225	ACME	K4ZA
1200	DAILY	3509	AM. MORSE	W2SVR
1330	Su	3810	QCWA	W1HIL
1500	Su	3810	QCWA	W2VW
1500	Su	50300	?	W1HIL
1600	SA Su	14345	S	W3KH
1600	Su	3888	QCWA	W8JDV
1630	Su	3869	SARO	W6LC
1700	Su	7225	MOB. EM.	W3ZA
1700	Su	3900	?	W2HE
1700	Su	3907	QCWA	W6PLS
1730	Ex Su	7265 (5)	Soc. Sec.	W7FZC
1730	Ex Su	3905	OLD BUZZ.	W2NA
1800	Su	3785	QCWA	W6PLS
1900	DAILY	7255	WCARS	W6FB
2300	DAILY	3680	VA CW	W4ZM
2300	DAILY	3544	AMER MORSE	W2SVR
2300	TH	29100	?	W1HIL

## CLOCK WATCHERS GUIDE

OVER 200 LISTINGS FOLLOW. INEVITABLY SOME ERRORS WILL APPEAR. THE GMT SCHEDULES HAVE BEEN ADJUSTED FOR DAYLIGHT SAVING TIME, WHICH APPLIES BY MAY 1ST IN MOST STATES. IT HAS BEEN IMPOSSIBLE TO GET RELIABLE INFORMATION CONCERNING THOSE STATES CONTINUING ON STANDARD TIME AND IN SUBMITTING DATA, VERY FEW HAVE GIVEN COMPLETE TIME INFORMATION. IF YOU ARE INCORRECTLY LISTED, WRITE THE COMPLETE AND CORRECT DATA ON A POST CARD FOLLOWING PRECISELY THE LISTENING POST FORMAT. IF YOU ARE LISTED CORRECTLY IN THE L.P. YOU WILL AUTOMATICALLY BE LISTED CORRECTLY HERE. TO MAKE THE JUNE ISSUE, DATA MUST REACH THE EDITOR BY APR. 25 - TOO SOON FOR SOME OF YOU TO COMPLY BUT THE CORRECTION WILL BE MADE ANYWAY IN THE AUGUST ISSUE.

DAYS	START-GMT-END	FREQ KCs	STATION
DAILY	0000 0030	3535	VE2CP
DAILY	0000 0400	3600	W4TE
DAILY	0000 0300	3575(25)	W2QY
Ex SA Su	0000 ?	3520	W6LM
TH	0000 0030	29400	W1PS
FR	0000 0500	14010	W2SCP
Ex SA Su	0030 0100	3869	W6CBX
DAILY	0100 ?	3540	W7OE
DAILY	0100 0600	14050	W90D
DAILY	0100 0500	7015(5)	XE1DDM
DAILY	0100 1300	14068	VU2JA
TU	0200 0300	1815	W1BHD
WE	0210 ?	3595	W1NF
DAILY	0230 ?	50600	W8JVD
DAILY	0200 1500	21036	VU2JA
DAILY	0230 0300	3868	WB6TYO
Ex TH	0300 0400	3943	W2BC
Ex SA Su	0300 0800	7240	K9YRI
DAILY	0300 0400	7010	K7WL
DAILY	0300 ?	3875	W8DHF
DAILY	0300 0400	7010	K7WL
SA	0330 0430	29250	W1BHD
TU	0330 0400	1815	W1BHD
Mo To SA	0330 0430	50200	W9DI
	0400	SEE 0000, 0100, 0200, 0300	
DAILY	0500 0700	3605	K9CET
DAILY	0500 ?	14010	VK2NS
DAILY	0500 ?	14075	VK2NS
DAILY	0530 0900	7010	W5NI
DAILY	0530 ?	7220	XE1DDM
	0600	SEE 0200, 0300, 0400	
	0700	SEE 0200, 0300, 0500	

(CONTINUED ON NEXT PAGE)



## CLOCK WATCHERS GUIDE

- CONTINUED

DAYS	START-GMT-END	FREQ KCS	STATION
Mo THRU FR	0830 1130	7010	W5BZ
DAILY	0930 ?	7022	VK2NS
Mo TH	1000 1040	21285	K21K
DAILY	1000 1030	14300	W4BU
Ex SA Su	1000 1100	3999	W4DKJ
DAILY	1000 1200	14345	KP4TL
Mo THRU FR	1100 1130	3960	K1RTV
DAILY	1100 1230	14050	W2DXX
Ex SA Su	1115 1130	7220	W4DKJ
Ex Su	1130 1200	3960	W1JLK
FR SA Su	1130 ?	3520	W8BKM
DAILY	1130 0400	3999	W3ZF
Ex SA Su	1130 ?	14307	W4DKJ
DAILY	1100 1300	3525	W1AOS
DAILY	1130 ?	14265	W2DXX
Mo THRU FR	1130 1200	3520	W9SG
Ex Su	1200 1300	3960	W1UE
WE	1230 1430	3850	K21K
DAILY	1200 1245	3509	W2SVR
Ex Su	1230 ?	3915	W4ZM
Ex Su	1200 1245	3930	W5RU
Mo WE FR	1200 1230	3520	K3AA
DAILY	1200 1330	3790	VE2BG
Ex Su	1200 1500	14330	W2APF
DAILY	1200 1500	21258	K21K/4
Ex Su	1200 2200	3940	W1AOG
TH FR SA	1200 0500	14275	K6DH
Ex SA Su	1200 1330	3960	W1QT
WE TH FR	1230 1600	3920	K2BX
Ex SA Su	1245 1340	7235	W4VG
Su	1230 1400	3930	W5RU
Su	1230 ?	3975	W1BPH
Ex SA Su	1330 1600	7060	K1AJ
DAILY	1300 ?	3900	K4GO
Su	1300 1400	14316	W4CZ
Mo WE FR	1300 1400	3680(5)	W2BGN
Su	1300 ?	7242	W2LV
Mo TH	1300 ?	14270	W2US
SA	1330 ?	21025	W3KH
Su	1300 1550	3505	W3UXW
Mo TO SA	1300 1330	144900	W9DI
Su	1300 1800	14332	W2NWF
DAILY	1300 1500	7270	W3BTR
Mo WE FR	1300 1350	14068	K3AA
SA	1300 ?	14068	*W5VA
FR SA Su	1300 ?	7035	W8BKM
Ex Su	1300 1800	3960	W1KJ
Ex SA Su	1300 1400	50015(10)	W9DI
DAILY	1300 ?	14300	K2SOE
Mo TO SA	1300 1500	3910(30)	W2GC
DAILY	1300 1430	3790	VE2BG
Mo THRU FR	1330 1530	29495(5)	G6BY

APR 67

DAYS	START-GMT-END	FREQ KCS	STATION
DAILY	1400 1600	7210	W3BA
FR SA Su	1400 1700	14075	K6VTC
Tu TH	1400 1430	14320	W8TE
SA	1400 1500	3520	W9DI
Mo TO SA	1400 1500	7273	W9DI
Su	1400 1700	21300	K9CET
Su	1400 1430	3840	W1APL
Mo WE FR	1400 1600	3965(5)	W2BGN
Mo THRU FR	1430 1530	3980	W2MDB
Mo WE FR	1400 1500	21340	W2VW
DAILY	1400 ?	7290	K4GO
Mo WE FR	1415 ?	50700	W8JDV
Ex SA Su	1400 1630	28495(5)	G6BY
Tu	1400 1430	3685	W30Y
Ex SA Su	1430 ?	3695	W6LK
Ex SA Su	1445 1530	1222mc	W6LK
DAILY	1430 1530	3860	W7GOM
Tu	1500 1900	14290(30)	W3BS
Ex SA Su	1500 1800	21050	W1UE
DAILY	1500 ?	21258	K21K/4
DAILY	1530 1600	3950	W1TOL
DAILY	1530 1600	14300	W4BU
Su	1530 1600	3950	W8KS
Mo	1500 1600	14070	W6PLS
SA	1500 ?	21050	W6FAR
Su	1500 1700	7010	W1AAC
Su	1500 1530	50300	W1HIL
Su	1530 ?	3965	W2MAB
DAILY	1500 1600	14280K3ZVH/VE4	
Su	1530 1630	3791	W6CBX
SA Su	1500 ?	3520	W6LM
DAILY	1530 ?	3885	W6YPM
DAILY	1600 2200	3800	VE3IC
Ex SA Su	1600 1700	3980	W9DI
Su	1600 ?	3888	W8JDV
Su	1600 1630	144800	W1HIL
Su	1600 ?	7145	W3KH
SA	1600 ?	7210	W3KH
Su	1630 1730	3869	W6CBX
Ex Su	1600 1700	3825	W6FS
Su	1600 1700	3950	W6FS
Ex SA Su	1600 ?	14287	W6YPM
DAILY	1630 1730	7140	W7GOM
DAILY	1630 ?	7240	W8JDV
DAILY	1600 0430	143700	W6WPF
SA Su	1600 1700	14200	W4MF
?	1600 2100	14100(20)	K6AJ
Su	1600 1630	3965	W6TMY
SA	1600 0100	14250	W7DH
Ex SA Su	1700 1730	14050	W5RIH
Ex SA Su	1700 1900	3805	W3PL
Mo WE	1700 2000	14300	W5JGK
DAILY	1700 2100	14100	WA4IHD
Ex SA Su	1700 2400	7255	W6MLZ

(CONTINUED ON NEXT PAGE)

PAGE 25



## CLOCK WATCHERS GUIDE

- CONTINUED

DAYS	START-GMT-END	FREQ KCs	STATION
Ex Su	1700 2000	3900(10)	W8BUH
DAILY	1730 1800	3950	W2RZ
Su	1700 1730	3900	W211E
Su	1700 ?	3880	W2LV
Ex Su	1730 ?	3905	W2NA
Ex Su	1730 1830	7268(5)	W6CBX
DAILY	1730 1830	7265	W6FZC
SA	1700 1800	14315	W611
DAILY	1700 1800	7145	W6FZ
Su	1700 1800	3907	W6FS
Su	1700 1800	3907	W6PLS
SA Su	1800 2000	21400	K4EN
Ex SA Su	1800 1900	7205	W5RIH
DAILY	1830 2200	3999	K4HEN
Su	1800 1900	3785	W6PLS
DAILY	1830 2030	21020	K8NG
DAILY	1800 ?	3540	W7OE
Ex SA Su	1800 ?	21380	W6VLV
DAILY	1800 2000	14050(20)	W2NR
DAILY	1800 2400	14340	K6BX
SA Su	1800 ?	14340	K4KOY
FR SA	1800 1830	14295	K3AA
Su	1800 ?	14100	W9MG
FR SA	1830 1900	21390	K3AA
FR SA Su	1900 2200	14075	LU8BAJ
DAILY	1900 ?	7255	W6BT
DAILY	1900 2100	7070	WA0APB
Su	1900 2030	3950	WB6TYO
DAILY	1900 2130	7255	W611
DAILY	1900 ?	7255	W6FB
Ex SA Su	1930 ?	7255	W6YPM
DAILY	2000 ?	3698	W1AEH
DAILY	2000 ?	7040	W7OE
Su	2000 2100	29000	W6THY
Mo We Fr	2100 2145	3925(5)	W1HIL
Su	2100 2300	3940	K4HEN
Mo We Fr	2100 2145	3925(5)	W1GAG
DAILY	2100 2300	3940	W3ST
DAILY	2100 2145	3999	W1ANA
DAILY	2100 2200	14250	W8HR
DAILY	2100 0300	14345	KP4TL
DAILY	2100 2400	3810	K10UO
Mo Th Fr	2130 2230	3870	W1MLT
Su	2130 ?	14235	*W5VA
Ex SA Su	2130 ?	3855	K1SGO
DAILY	2200 ?	14065	W7OE
DAILY	2200 2230	3698	K1TZH
Mo We Fr	2230 ?	3885	W0BUL
DAILY	2230 2330	7010(5)	K6WL
DAILY	2200 ?	3900	W2Z1
Th	2230 ?	3940	W1AEH

DAYS	START-GMT-END	FREQ KCs	STATION
DAILY	2245 2315	3610	W30Y
DAILY	2200 2245	3570	W8HZA
Th	2300 0100	29100	W1HIL
DAILY	2300 0045	3544	W2SVR
Th	2300 2400	3705	W3UXW
DAILY	2300 2400	3795	W6JF
We	2330 ?	7050	W6LM
DAILY	2330 ?	3885	W6YPM
Ex SA Su	2300 ?	3850	W6YPM
DAILY	2300 2400	3900	W2Z1
DAILY	2300 0015	3663	W8FX
DAILY	2300 0100	3950	W8HR
DAILY	2300 2400	3999	W2ZK
DAILY	2300 0500	7015	W9NN
SA Su	2300 0500	14075	KL7MF
DAILY	CONTINUOUS	3640	W7OE
DAILY	MONITORING	7140	W7OE

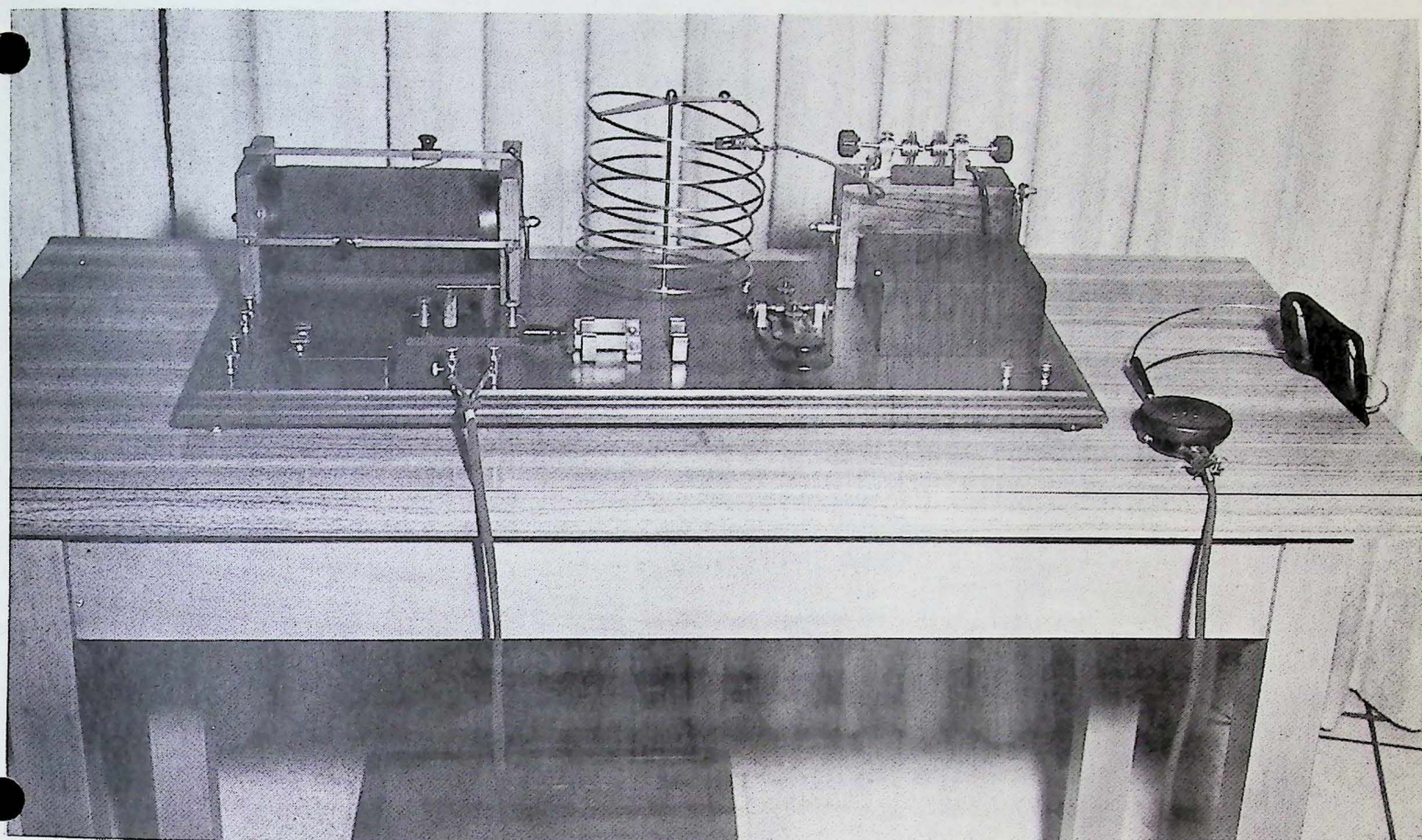
IS ALL THE ABOVE IMPRESSIVE? IT CERTAINLY DOES IMPRESS THE PERSON WHO HAD TO TABULATE AND TYPE ALL THIS. ESPECIALLY WHEN HALF OF THE DATA POURED IN A FEW DAYS BEFORE PRESS DEADLINE. HOWEVER IT SEEMS WELL WORTH THE EFFORT. IT PROVIDES A BASIS FOR INTERCOMMUNICATION BETWEEN MEMBERS. EXCEPT FOR THE NEW ORLEANS AREA OOTC GROUP MEETINGS HAVE NEVER GOT ANYWHERE. OVER-AIR CLUB MEETINGS ARE NO LONGER POSSIBLE. BUT TODAY ANY MEMBER CAN TALK TO AN OFFICER AND DISCUSS CLUB AFFAIRS. ALL BUT 4 OF THE OFFICERS LISTED ON PAGE 1 ARE LISTED ABOVE. THE LISTENING POST IDEA HAS CERTAINLY "TAKEN HOLD".

NOW TO IMPROVE IT. EVERY MEMBER CAN HELP BY REPORTING ON A POST CARD HOW HE SHOULD BE LISTED, FOLLOWING AS CLOSELY AS POSSIBLE THE LISTENING POST FORMAT. WE HAVE OVER 60 REPORTS WHICH COULD NOT BE PRINTED BECAUSE (A) THE OPERATING DAY WAS OMITTED. (B) NO FREQUENCY WAS GIVEN. (C) NO TIME WAS GIVEN. (D) SEVERAL FREQUENCIES WERE GIVEN FOR SIMULTANEOUS TIMES. OVER 55 HAVE OMITTED THE TERMINATING TIME OF THEIR OPERATING PERIOD. THIS CAN FRUSTRATE THOSE WANTING TO CONTACT YOU. NO NEED TO STATE AN EXACT TIME, IT WILL VARY IN NEARLY EVERY CASE SO GIVE AN AVERAGE OFF-AIR TIME.

POST CARD REPORTING IS IDEAL BECAUSE IT SPEEDS UP THE WORK AT THIS END AND REDUCES CHANCE OF ERRORS. WE'D RATHER GET 500 ONE-SUBJECT POST CARDS A MONTH THAN 50 LETTERS DEALING WITH SEVERAL SUBJECTS.



H E R E I T I S - Y O U V O T E D F O R I T



YOU VOTED BIG IN THE SGT SURVEY FOR PICTURES OF MEMBERS' GEAR. YOU VOTED BIG FOR EMPHASIS ON "OLD TIME". NOW IF WE COULD ONLY COMBINE IT WITH THE OWNER'S PHOTO (YOU VOTED BIG FOR SUCH) WE'D WIN THE LAST YEAR'S FRUIT CAKE. THE OWNER OF THIS OUTSTANDING "LOW-LOSS" TRANSMITTER INSISTED ON ANONYMITY. TO BE FRANK HE MIGHT HAVE BEEN IN 3-LAND IN 1920.

THIS PICTURE BUSINESS IS A PROBLEM, BOYS. THE USUAL STATION IS AN ASSEMBLAGE OF BLACK BOXES ON TABLE OR DESK, QSL CARDS AND MAPS ON WALL; CLOCK, MIKE AND GLOBE. AFTER SEEING THREE OR FOUR YOU'VE SEEN THEM ALL. IF YOU THINK THE READERS WANT THAT KIND KEEP ON SENDING THEM. SGT IS ABSOLUTELY DEPENDENT ON WHAT YOU SEND IN. HOWEVER, WE SUSPECT THAT A PICTURE, TO OUTCLASS CHEESECAKE, SHOULD SHOW YOUR RIG IN A SLOOP, TENT, CANOE, TREE-HOUSE, LAWN SHELTER, MOTORCYCLE OF SNOW-SLED. OR, ONE OF YOU, YOURSELF, HOLDING A PIECE OF GEAR YOU'VE ORIGINATED, MODIFIED OR IMPROVED ALONG WITH STORY GIVING DETAILS AND PERHAPS A SCHEMATIC.

APR 67

#### PURCHASING POWER SURVEY

TO FEBRUARY 20 ABOUT 50 MEMBERS HAVE REPORTED 1966 PURCHASES OF TANGIBLES, EACH ITEM IN EXCESS OF \$100. IF POTENTIAL ADVERTISERS COULD BELIEVE THAT THESE FIFTY INDICATED THE AVERAGE ANNUAL PURCHASING POWER OF OUR MEMBERS THEY WOULD STORM OUR GATES AND WE WOULD HAVE A DOZEN OR MORE FULL-PAGE ADVERTISEMENTS EACH ISSUE.

TO MAKE THE SURVEY ACCEPTABLE TO ADVERTISERS WE NEED ABOUT 200 REPORTS. SOME MEMBERS APOLOGIZE FOR BUYING NO RADIO GEAR IN 1966. SO WHAT? IF YOU REPRESENT A MARKET FOR POWER MOWERS, BOATS, CAMERAS, ETC., ADVERTISERS WANT TO REACH YOU NO MATTER WHAT THE NAME OF THE MAGAZINE.

SOME DOZEN REPORTS LISTED ARTICLES PURCHASED BUT MADE NO MENTION OF COST. THESE REPORTS ARE ONLY HALF USEFUL AS THE COST OF THE ITEMS HAS TO BE GUESSED AT AND ADVERTISING MEN DON'T LIKE GUESSES. IF WE COULD ONLY GET REPORTS FROM ALL MEMBERS THE PRESENT SGT WOULD LOOK LIKE A KINDERGARTEN PASTE UP COMPARED TO FUTURE ISSUES.

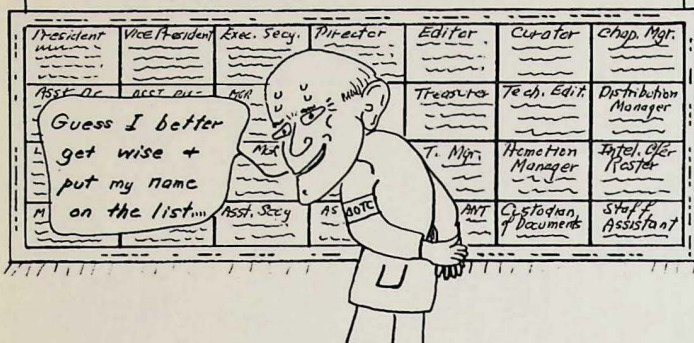
'X' ON SGT ENVELOPE CORNER MEANS YOUR SUBSCRIPTION EXPIRES NEXT MONTH

PAGE 27



## EMPLOYMENT AGENCY

VOLUNTEERS WANTED FOR POSTS AS OFFICERS OR ALTERNATES WITHIN O.O.T.C.



IMPORTANT STIRRINGS IN THE AGENCY DURING FEBRUARY SEEMED TO FORECAST BETTER TIMES AHEAD FOR OOTC. BELIEVE IT OR NOT THIRTY MEMBERS HAVE CONSENTED TO "RUN" FOR A DIRECTORSHIP AND THE NAMES OF THOSE TO APPEAR ON THE FALL BALLOT WILL PROBABLY BE PUBLISHED IN THE JUNE ISSUE.

BESIDE THE DIRECTOR PROSPECT ONE MEMBER WROTE IN THAT HE WOULD BE ABLE TO DEVOTE 7 TO 8 HOURS PER WEEK TO AN OOTC JOB. AT THE PLEASURE OF THE DIRECTORS HE COULD BE CONSIDERED FOR SEVERAL OFFICES, EVEN THE PRESIDENCY. HIS NAME HAS BEEN FORWARDED THRU CHANNELS FOR THE CONSIDERATION OF THE NEW DIRECTORS TO BE ELECTED.

COULD IT BE THAT THE OLD OLD TIMERS CLUB IS ON THE THRESHOLD OF A RENNAISSANCE?

THE PROPHETS OF DOOM SEE NO REPLACEMENT IN SIGHT AT THE END OF THE PRESENT SGT EDITOR'S TERM. NONSENSE. ONE WOULD THINK SOME SPECIAL KIND OF GENIUS IS REQUIRED TO GET OUT THIS RAG. ALL IT REQUIRES IS WORK OF THE INTENSIVE KIND FOR THREE WEEKS IN ALTERNATE MONTHS AND MORE LEISURELY ATTENTION TO CORRESPONDENCE IN BETWEEN. UNFORTUNATELY THE PATERNAL PHILOSOPHY EMANATING FROM WASHINGTON OVER THE PAST DECADE HAS MADE "WORK" A DIRTY WORD AND MANY OF THE NEW GENERATION EXPECT TO LOAF THEIR WAY TO THE GRAVE. THE VIRUS HAS INFECTED EVEN SOME ELDERS. FROM 75 TO 100 OF OUR MEMBERS ARE FULLY ABLE AND QUALIFIED TO ASSEMBLE SGT AND IF FROM THIS GROUP NO ONE CAN BE EXTRACTED THE CLUB DESERVES TO FOLD UP. ACTUALLY THERE OUGHT TO BE A WAITING LIST FOR THE EDITORSHIP NOW THAT A FORMULA HAS BEEN ESTABLISHED FOR THE GENERAL MAKE-UP OF THE MAGAZINE. BESIDES SGT NOW HAS A STAFF OF HELPING HAND EDITORS FOR THE FIRST TIME IN OUR HISTORY.

AS WE GO TO PRESS, A FEW DAYS LATE, IT IS APPARENT THAT A NEW VACANCY HAS DEVELOPED - THAT OF LISTENING POST EDITOR. THE MAGAZINE IS ALREADY PARTIALLY DEPARTMENTALIZED. EACH OF THE FOLLOWING HAS A SPECIFIC JOB TO DO - WIPS, WIGU, WIKC, WZZI, W8HR, W8TE, W18HD AND W70E.

HANDLING THE ENTRIES FOR THE LISTENING POST HAS BECOME A MAJOR TASK AND YOU CAN GUESS UPON WHOM THE LOAD HAS FALLEN. TO THOSE WHO HAVE WRITTEN IN ASKING: "WHAT CAN I DO TO HELP? - HERE IS YOUR ANSWER. WE NEED AN EDITOR WHO WILL ASSUME THE TASK OF RECEIVING ALL THE ENTRIES, TABULATING THEM AND THEN TYPING THEM ON THE FINAL PAGES EXACTLY AS THEY APPEAR ON PAGES 14, 15, 16, 24, 25, 26 OF THIS ISSUE. IN OTHER WORDS, UP TO SIX PAGES MAXIMUM - THE AVERAGE WILL BE THREE OR FOUR - WILL BE ALLOCATED TO THIS EDITOR. IN MOST ISSUES THERE WILL BE SOME UNUSED SPACE WHEREIN HE CAN PRINT SOME EDITORIALIZING ON HIS OWN. TO DISCHARGE THE TASK HE WILL HAVE TO DO INTENSIVE WORK, TOTALLING PERHAPS THIRTY HOURS, BETWEEN THE 10TH AND 15TH OF EACH ALTERNATE MONTH. HAVE WE ANY TAKERS?

\*\*\*\*\*

### O O T C SUPPLIES & SERVICES

100 OOTC LETTERHEADS 8½" x 11"	\$2.00
150 GUMMED STICKERS (OOTC SEAL)	1.00
OOTC EMBLEM, PIN OR LAPEL TYPE	2.00
OOTC BLUE BOOK, TO MEMBERS	3.00
OOTC AWARD CERTIFICATE	1.00
1913 GOV'T CALL BOOK (REPRODUCTION)	2.00
SUPPLEMENTS TO ABOVE, COMPLETE SET	3.00
E I Co & MODERN ELECTRICS CALL BOOKS	3.00
(ABOVE SET INCLUDES 1909, 10, 11)	
PACKET, FOR RECRUITING NEW MEMBERS	1.00
(ABOVE CONTAINS 50 EACH FOLDERS & PRELIMINARY APPLICATION CARDS)	

PRICES GIVEN, POSTPAID IN US. ADD 20% FOR FOREIGN ADDRESSES. REMIT TO SECTY ONLY.

### O O T C QSL CARD

100 Postpaid in USA (REGULAR STOCK)	\$2.00
100 PPD USA (LUMINOUS STOCK)	4.00

OUTSIDE USA ADD 20% TO PRICE

REMIT ONLY TO VENSON G. BLAISDELL, SR.

QSL PRINT K1FF BOX 33

MELROSE, HLDS.BR. MASS. 02177



FEATURES AND ARTICLES TENTATIVELY PLANNED FOR SPARK GAP TIMES	EXAMPLE ON PAGE	MORE EMPHASIS	LESS EMPHASIS	SAME AS DEC 66	
NEWS EVENTS	4	26	1	118	145
NOSTALGIC ARTICLES BEFORE WW I	18,23	42	11	92	145
NOSTALGIC ARTICLES AFTER WW I	-	36	17	79	132
TECHNICAL ARTICLES	6	40	29	78	147
INFO ABOUT MEMBERS' ACTIVITIES	10	48	6	99	153
OPINIONS AND IDEAS OF MEMBERS	19	31	6	106	143
BRAIN WAVES	24	15	17	100	132
CLUB OPERATIONS AND ACTIVITIES	4,6,24	16	8	109	133
CLUB HISTORY	22	14	11	110	135
LISTENING POST	15	29	10	107	146
ACTIVITIES INTERESTING OOTERS	8,17	49	6	86	141
PHOTOGRAPHS OF MEMBERS	5,17	61	4	85	150
PHOTOGRAPHS OF MEMBER'S GEAR	COVER	59	8	83	150
APPRECIATIONS	12	16	9	108	133
FICTION	20	5	50	77	132
USE OF CARTOONS	SEVERAL	31	23	101	155
USE OF HUMOR	SCATTERED	34	14	105	153

# CLOCK WATCHER STATIONS AS SELECTED FROM PAGES 24,25,26

0000 To 0100	W2QY
0100 To 0200	W90D
0200 To 0300	W8JVD
0300 To 0400	K7WL
0400 To 0500	K9YRI
0500 To 0600	K9CET
0600 To 0700	W5NI
0700 To 0800	VU2JA
0830 To 0900	W5BZ
0900 To 1000	VK2NS
1000 To 1100	KP4TL
1100 To 1200	W1AOS
1200 To 1300	W2SVR
1300 To 1400	VE2BG
1400 To 1500	K4G0
1500 To 1600	K2IK/4
1600 To 1700	W6FS
1700 To 1800	W6JF
1800 To 1900	W2NR
1900 To 2000	W6FB
2000 To 2100	W1AEH
2100 To 2200	W3ST
2200 To 2300	W8HZA
2300 To 2400	W6YPM

(CONTINUING FROM PAGE 2) - AS A GUIDE IN PLANNING AND EXECUTING FUTURE ISSUES OF SGT. ABOVE IS A REPLICA OF THE SURVEY CARD WITH ALL VOTES TABULATED IN THE VARIOUS CATEGORIES. FIGURES IN EXTREME RIGHT COLUMN REPRESENT TOTAL VOTES CAST FOR THAT CATEGORY. ON A SMALL PERCENTAGE OF CARDS SOME CATEGORIES WERE LEFT BLANK. THERE WAS ONE (1) GRIPE. THIS WAS ABSOLUTELY UNIQUE AND IS PUBLISHED EXACTLY AS RECEIVED ON PAGE 12. WE HAD PREVIOUSLY AGREED, REMEMBER, THAT WE WOULD PUBLISH BOTH SIDES OF ANY CONTROVERSY. THE VOTE:

CATEGORY	AS MUCH OR MORE	LESS EMPHASIS	MOST VOTED ON	TOTAL VOTES
MEMBER ACTIVITIES	147	6	CARTOONS	155
PHOTOS OF MEMBERS	146	4	HUMOR	153
NEWS EVENTS	144	1	MEMBERS' ACTIVITIES	153
PHOTOS OF GEAR	142	8	PHOTOS OF MEMBERS	150
HUMOR	139	14	PHOTOS OF GEAR	150
OPINIONS & IDEAS	137	6	TECHNICAL ARTICLES	147
LISTENING POST	136	10	LISTENING POST	146
OOTER ACTIVITIES	135	6	NEWS EVENTS	145
NOSTALGIC BEFORE WWI	134	11	NOSTALGIC BEFORE WWI	145
CARTOONS	132	23	MEMBERS' OPINIONS	143
CLUB OPERATIONS	125	8	OOTER ACTIVITIES	141
APPRECIATIONS	124	9	HISTORY	135
HISTORY	124	11	CLUB OPERATIONS	133
TECHNICAL	118	29	APPRECIATIONS	133
NOSTALGIC AFTER WWI	115	17	BRAIN WAVES	132
BRAIN WAVES	115	17	FICTION	132
FICTION	82	50	NOSTALGIC AFTER WWI	132

AS A SECONDARY GUIDE WE WILL KEEP IN MIND THE CATEGORIES MOST HEAVILY VOTED ON. THOSE THINGS OUR READERS GET MOST "WORKED UP" ABOUT, EITHER MORE OR LESS AS LISTED IN RIGHT COLUMN ABOVE.

THE EDITORS NOW KNOW THE CATEGORIES TO GET BUSY ON AND IMPROVE. IN GENERAL HOWEVER, SGT CAN BE NO BETTER THAN THE MATERIAL SENT IN BY THE READERS. WE HAVE NO REPORTERS, NO MECHANISM FOR GETTING MATERIAL IN. WISH US LUCK. MEMBERS' PHOTOS ONE OF THE BIG PROBLEMS. MOST OF THESE ARE ALREADY SCHEDULED FOR THE BLUE BOOK AND TO PUBLISH IN SGT WOULD BE A DUPLICATION. WISH US MORE LUCK.



# NEW

## DX

## Beam

## and

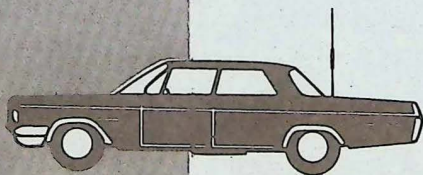
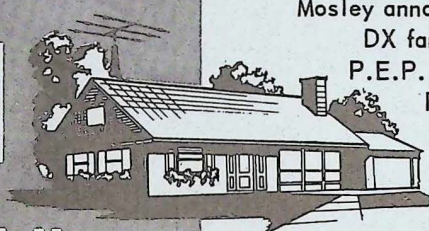
## Mobile

## Antenna

## by

## MOSLEY

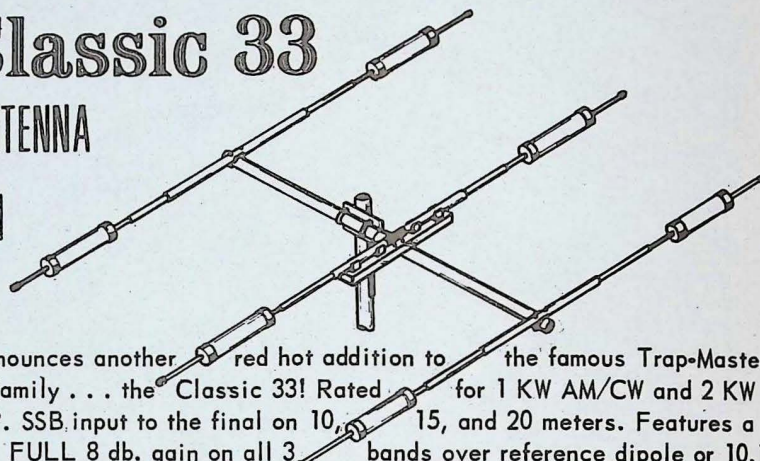
FREE: Your "Ham Shack  
Copy" of the NEW  
1967 ANTENNA CATALOG  
Write Dept. 110A



## The Classic 33

### AMATEUR ANTENNA

for 10, 15, and  
20 meters



Mosley announces another red hot addition to the famous Trap-Master DX family . . . the Classic 33! Rated for 1 KW AM/CW and 2 KW P.E.P. SSB input to the final on 10, 15, and 20 meters. Features a FULL 8 db. gain on all 3 bands over reference dipole or 10.1 db. compared to isotropic source.

The introduction of the Classic 33 means . . . now Mosley offers you a new type of balanced feed system in a beam, "Broad Band Capacitive Matching"\*. An efficient, very effective way of beam matching.

Other features you'll appreciate . . . wider spacing, longer boom of greater diameter, and an extra rugged clamping method. Put them all together and you've got a real DX'in beam! For more information on the New Classic matching system and why Mosley developed the Classic 33 . . . . . Write code 107.

\* (Pat. Pend.)



Now in the Mosley tradition of antenna excellence . . . consider the New mobile Lancer 1000 for unsurpassed mobile DX'ing! Rated for 1 KW AM and 2 KW P.E.P. SSB input to the final on 5 bands (10-75 meters).

This reasonably priced New mobile antenna offers you such outstanding features as: (1) Interchangeable coils, performance tested to take constant KW use (10 meters does not require a coil). (2) Corona Ring at antenna tip for reduction of corona effect. (3) Adjustment in whip section for antenna peaking to desired frequency. (4) Capacity coupled top whip section for maximum efficiency.

Go Mosley all the way. Go mobile! Put a mobile Lancer 1000 on your car and a Classic 33 at the home QTH. Then you're ready for uninterrupted DX'ing wherever you are. For more information write:

**Mosley Electronics, Inc.**

AD CODE NO. 110A  
4610 N. LINDBERGH BLVD., BRIDGETON, MO. 63042