

RADIO DIAL

REGISTERED

Volume I, No. 36

WEDNESDAY JANUARY 28, 1932

74

Price 5c

Meet the New Paul Whiteman



Paul Whiteman and Mrs. Whiteman, the former Margaret Livingston of the movies. This is the new streamline model Whiteman, 100 pounds lighter than before his now-celebrated diet which wasn't grapefruit. Here's the secret: He ate nothing between 6 p. m. and noon the next day.

This has been Whiteman Week in Cincinnati.

The King of Jazz took over the city as befitted a monarch of the realm of music. There was everything but a parade. The triumphs began last Friday night (January 15) when Whiteman broadcast his Pontiac Chieftain program at 10 o'clock on the NBC-WJZ network, using the studios of WCKY for the purpose. WCKY made it an occasion. "Paul Whiteman Welcome," said signs on every lift of the four flights of stairs that lead up to WCKY's studios. "Paul Whiteman Welcome" said red, and blue, and white, and green silk ribbons running northeast to southwest on evening-gowned girls and tuxedoed men who pinned roses on Whiteman and his men and Mildred Bailey, for of course Mildred was there, too. "Paul Whiteman Welcome" said more signs, and red, white and blue bunting that decorated the place.

Since that time Whiteman and his orchestra have been standing them out in the streets at the RKO-Albee, where he is demonstrating that he is one of the country's greatest showmen as well as one of its greatest musicians. In between stage shows, and from early morning until noon, he's been hearing aspirants for his favor in his "Youth of America" auditions he's been holding in search of prospective radio talent. His first "finds" played on the first Pontiac program. They were Virginia and Betty Jane Holman, 17 and 16-year-old piano prodigies whom he selected in St. Louis. Incidentally, although so young, they are finished artists, both of them, and

(Continued on page 4)

WFBE Dedicates Its New Studios Tuesday, Jan. 26

Formal dedication of the new studios of station WFBE by The Cincinnati Post will take place Tuesday (January 26), beginning at 2 p. m. and continuing until midnight with special programs.

Friends of WFBE have been invited to attend a reception at 8 p. m. in the grand ballroom of the Hotel Sinton-St. Nicholas where the studios now are located. At 8:15 p. m. officials of the newspaper will speak on the air for 15 minutes. Rae Samuels, RKO-Albee headliner, will take over the microphone at 8:30 and probably will inject some dedicatory remarks of her own into the program.

Frank Simon and the Armco Band will play a half-hour concert at 9 p. m., followed at 9:35 by songs and a brief talk by John Horgan, manager of the Sinton-St. Nicholas.

Buddy Rogers Makes Radio Debut Friday

Lily Pons Sings Opera This Week

French Soprano Will Be Heard in "Barber of Seville"

Lily Pons will be heard on the air in opera for the first time on Saturday (January 23) when she sings the role of Rosina in the "Barber of Seville." WSAI and other NBC-WEAF stations will broadcast the second and third acts from the Metropolitan performance, beginning at 3 p. m.

In the cast with Mme. Pons will be Giuseppe de Luca as Figaro; Armand Tokatyan as Count Almaviva; Pompilio Malatesta as Dr. Bartolo; Ezio Pinzio as Basilio; Alfredo Gandolfi as Florello; Henrietta Wakefield as the servant; and Giordano Paltrinieri as an official.

Mme. Pons sang on the air in the General Electric Sunday program two weeks ago, and last Sunday substituted for Lawrence Tibbett on the Firestone program. Her coloratura soprano voice was the outstanding discovery of the Metropolitan last season.

Scandinavian Prime Ministers Will Broadcast

Prime Ministers of Denmark, Norway and Sweden will speak from their respective capitals, each in his native tongue, followed later by translations, during the International broadcast on the Columbia chain Sunday (January 24) from 12 noon to 12:45 p. m. WABC (860 kc.) and KMOX (1000) will be among the stations broadcasting.

The program will be ushered in by the chimes from the tower of City Hall, Copenhagen, immediately followed by the introduction by North Winship, American Charge d'Affaires in Denmark, of Prime Minister Thorvald Stauning. At 12:15, from Oslo, Hoffman Philip, American Minister to Norway, will introduce Prime Minister Peder Kolstad. At 12:30, from Stockholm, American Minister John M. Morehead will introduce Gustav Ekman, Prime Minister of Sweden.



Buddy Rogers

Rudy Vallee To Help Veterans

Veterans of Foreign Wars, assisted by Rudy Vallee, Odette Myrtil, the United States Marine Band, and radio and stage stars, will initiate their national membership drive with a gala program Friday night (January 22) at 11:30 on WLW and other NBC-WJZ stations.

Paul Whiteman was originally scheduled to broadcast, but his RKO-Albee schedule makes it necessary for him to leave Cincinnati immediately following his Pontiac program. Miss Myrtil, French comedienne, will sing "Madelon," and Vallee's Connecticut Yankees will alternate with the Marine Band in playing songs reminiscent of the World War.

Congressman Wright Patman, Texas, congressional champion of veterans, will be the chief speaker. His subject will be "The Soldiers' Bonus." Other speakers will include Admiral Robert E. Coontz, Senior Vice-Commander of the V. F. W.; Darold D. Decoe, Commander-in-Chief; James E. van Zandt, Junior Vice-Commander, and Mrs. Dora E. Raffensperger, national auxiliary president.

Thies Orchestra Has New Program

Henry Thies fans will welcome the announcement that the Thies orchestra will be heard every Friday night at 9 o'clock on WLW in a new program advertising Dayton Thoroughbred tires. Assisting the orchestra will be Charlie Dameron.

Star Leaves Screen For Radio Work

Will Organize Orchestra, Go In Stage Show, Broadcast

Charles Rogers, "Buddy" to the movie audience—will make his radio debut for NBC Friday night (January 22) when he is guest artist on the Nestle program at 8 o'clock on NBC-WJZ stations, including WCKY.

Buddy has dropped the Charles and dropped the movies too. He's going into the new Ziegfeld show, "It Never Rains," is organizing his own orchestra, and will broadcast frequently both with the band and as a solo musician, for he plays almost every instrument. Buddy was playing trombone and leading an orchestra at the University of Kansas when his film opportunity knocked at his door and he went into Paramount's training school for moving picture players.

With Leonard Joy's orchestra, Rogers will sing "My Future Just Passed," "My Song," and "Liebestraum."

Americans Will Broadcast From Berlin Sunday

American colony life in Berlin will be portrayed in a program from the German capital which WSAI and other NBC-WEAF stations will broadcast at 4 p. m. Sunday (January 24).

Miles Bouton, dean of American newspaper correspondents in Berlin, will be master of ceremonies which will include songs by the American Students' Choir, and an address by Ewart Edmund Turner, pastor of the American Church in Berlin. Emy Jean Prouty, nine years old, will speak a little piece in behalf of the American children in Berlin. Katherine Kersting, formerly of the Chicago Civic Opera and the only American singer to have appeared in Wagner operas at Bayreuth, will direct the students in the Chorus from "Tannhaus."

Weekly RADIO DIAL

Published every Friday by the Radio Dial Publishing Co.,
22 East 12th St., Cincinnati, Ohio. Contents copyrighted.
NATALIE GIDDINGS, Editor HARVEY BERTRAM, Adv. Mgr.
Entered as second-class matter July 29, 1931, at the post office at Cincinnati, Ohio,
under the Act of March 3, 1879.

Six Months for \$1.

Single Copies 5 cents

VOL. I

WEEK ENDING JANUARY 28, 1932

No. 36

IN Re. DAILY PROGRAMS

Probably the most conspicuous development in program presentation during the past year or two has been the steady increase in features broadcast daily. Beginning with a few daring pioneers (Amos 'n' Andy started the parade, if memory serves), these have multiplied until a considerable part of the better listening hours now is given over to them. And there are indications that their number will grow still further.

As far as the sponsor is concerned, it is easy to see why this arrangement is so attractive. Repetition is, of course, advertising's big punch. Also, the daily act is pretty certain to catch more listeners than a once-a-week feature of the same aggregate length. In addition—and this is not to be overlooked—six 15-minute turns permit a far higher proportion of advertising than would be tolerated in a single 90-minute program.

But just how much the listener has benefited from the new arrangement is something else again.

True, most, as well as some of the best of the humor to be found on the air is being contributed by daily programs. However, on the musical side the tally is not nearly so impressive.

As the sponsors see it, a 15-minute show necessarily limits music to popular stuff; and in this many musicians agree. At any rate, it is becoming clear that the musical makeup of the typical daily feature is in large measure, if not chiefly, responsible for turning increasing stretches of the program schedule into a succession of audible vaudeville acts.

Is this the sort of fare on which appreciative listening thrives? Here, it seems to us, is the really pertinent angle of the matter, for the sponsor as well as the listener.

The enthusiastic response called forth by longer—and meatier, please note—features make it look as if there is a definite demand for something more than audible vaudeville. If that is the case, it follows that the daily turn should be content with dialogue, leaving music to the longer features which have space enough for something with more substance.

Far from being just a pretty theory, this whole matter is practical enough to warrant serious sponsor attention. Columbia's new booking of Howard Barlow's symphony and Toscha Seidel at 11:15 five nights a week will give them material for study.



Imagine their embarrassment! Sidney Ten Eyck and Bob Burdette, WLW announcers, find themselves teamed as a vaudeville act and as the comedy act on the Maxwell House Coffee Queen at 9 o'clock Tuesday nights (WLW). They call themselves now, "Radio's Foremost Unbalanced Minds"—which we doubt, for these two canny call-letter callers have found the secret of how to make radio audiences laugh, and keep on laughing.

Their public called them to the stage. Honest and truly, WLW has had so many calls from theaters for personal appearances of the two clowns that Ten Eyck and Burdette just had to give in. And how they hate it! (Oh yes?) Their new roles are bringing out the best in them, they say. Burdette has revealed a surprising talent with the guitar (although he seems to have developed a passion for the bass fiddle at the moment), and Ten Eyck (modestly in the background for the nonce) finds he can sing three part harmony all alone.

Ten Eyck, by the way, is no stranger to the theater, for he's been master of ceremonies for a number of the Crosley Talent Bureau's acts. The only trouble with that arrangement was that Ten Eyck got all the applause and attention.

They ran through their act in the RADIO DIAL office the other day, and no one—not even Ten Eyck and Burdette—have been the same since. They should be a riot on the stage. (Not one cent was paid for this testimonial, and we hope it does Radio's Foremost Unbalanced Minds as much good as it does us).

« PROGRAM JOTTINGS »

Pick of the Week's Programs on
Local and Out-of-Town Stations

Friday, January 22

"Bass Drum Dan," the latest variation of the Piccolo Pete theme, will be sung by the Pabst-ett Gang (Howard Trio or King's Jesters to you) at 1 p. m. on WKRC (CBS).

The Light Opera Gems program, to celebrate its second anniversary of broadcasting, at 4 p. m. on WKRC and other CBS stations will present their favorites from the various operas they have sung on the air. Among the other selections will be the duet from "Ruddigore" by Gilbert and Sullivan entitled "There Grew a Little Flower." It will be sung by Helen Nugent, former Cincinnati girl, and Crane Calder.

J. M. Barrie's dramatic fantasy, "Dear Brutus," will be played by the Radio Guild at 4:15 p. m. on WHAS (820 kc.) from the NBC-WJZ network.

The Cliquot Club Eskimos have broadcast 321 weekly programs on NBC stations in seven years on the air. At 9 p. m. Harry Reser and his men will repeat the program they played when they went on the air for the first time on December 3, 1925. WSAI will carry the program from the NBC-WJZ network. Graham McNamee who announced the first broadcast will be guest announcer on this three hundred twenty second program. In honor of the occasion, Reser will rearrange his orchestra, probably permanently, so that the baritone predominates as it did when the Eskimos were first on the air and before they adopted the night club idea they have been using recently.

Helen Gahagan, who had her picture in Radio Dial several weeks ago because she was booked to sing on the Fleischmann Hour, failed to make that appearance and will sing instead on the Pond's program at 9:30 p. m. on WSAI (NBC-WJZ).

Howard Barlow's symphony orchestra at 11:15 p. m. on WKRC and Columbia will play MacDowell's "Scotch Poem," a movement of Brahms' "Third Symphony," Beethoven's "Gondoliers" from "A Day in Venice," and "Autumn and Winter" from Glazounoff's "Ballet of the Seasons."

Saturday, January 23

Coming events in the 1932 presidential campaign cast their shadows before them in the increase of political talks on the radio. Now comes the National Democratic Forum which WKRC and other Columbia stations will broadcast at 2:30 on Saturday afternoons beginning this week (January 23) with a talk on "Pending Problems" to be given by Senator Royal S. Copeland, New York.

Station KUKU will have its final Saturday night program at 10:15 p. m. on WCKY before shifting to 5:30 p. m. Saturdays on WSAI under Blue Moon Cheese sponsorship beginning January 30.

Sunday, January 24

Reverend Donald Grey Barnhouse can be heard at WLW at 5 p. m. in a broadcast by electrical transcription. Barnhouse formerly was heard on the Columbia Network every Sunday afternoon from his church in Philadelphia.

Rufus Lopez, the reclaimed "problem child" of Thompkins Corners who took the Real Folks spotlight last week, is the inspiration for the dinner the unprivileged boys of the village will be given during the broadcast at 5 p. m. on WKRC (CBS).

Virginia Marucci, violinist, Antoinette Werner West, soprano, and Eugene Perazzo, organist, will be solo artists in the Musical Silhouettes at WLW at 6:30 p. m.

"The Three Bakers on the Radio" or "On a Kilocycle Built for Two" will be the Three Bakers outburst at 7:30 p. m. on WLW (NBC-WJZ). Our spy opines that perhaps Corey Ford writes the Three Bakers' pro-

grams. This should call forth either affirmation or denial. We'll get to the bottom of this yet.

Eddie Cantor will be back in New York for the Chase and Sanborn broadcast on WSAI (NBC-WJZ) at 8 p. m. with Jimmie Wallington and Rubinoff.

How to keep children "on time" in regular daily routine will be discussed on WKRC (CBS) by Angelo Patri at 8:45 p. m.

Monday, January 25

Calvin Coolidge's precise New England accents will be imitated by Ward Wilson in announcing the Royal Vagabonds at 6:30 p. m. on WLW (NBC-WJZ). On Wednesday night (January 27) at the same time, Wilson will impersonate Ben Bernie. WCKY takes the program on Wednesdays and Fridays.

Lawrence Tibbett will return to the Firestone program at 8:30 p. m. on WSAI (NBC-WJZ) after a week's absence while singing in Deems Taylor's opera "Colonial Ibbetson."

"Dr. Dragonette," a new mystery drama to be given by the WCKY Players in 10 installments begins at 9 p. m.

Tuesday, January 26

"Vienna, the Musical Capital" is the title given to the American School of the Air music appreciation program to be broadcast at 2:30 p. m. on WKRC (CBS). The program is inspired by the fact that most of the great classical composers lived, at one time or another, in Vienna, while Haydn, Mozart, Beethoven, Schubert and Strauss spent most of their lives there and are buried in the famous cemetery known as the Ehrengraben.

Ben Bernie believes he has found a successor to that famous "King's Orses" in "Guardsman On Parade" which he will present on his Blue Ribbon Malt program over WKRC (CBS) at 9 p. m.

Wednesday, January 27

Artells Dickson, Columbia baritone and character impersonator, will sing "Nichavo" and "That's Why Darkies Were Born" when he appears as guest artist on the Vitality Personalities broadcast on WKRC and CBS stations at 10 p. m. Freddie Rich's orchestra will play a medley of tunes from the new Broadway musical comedy burlesque of politics, "Of These I Sing," including the title song, "Who Cares," and "Love Is Sweeping the Country."

ties broadcast on WKRC and CBS stations at 10 p. m. Freddie Rich's orchestra will play a medley of tunes from the new Broadway musical comedy burlesque of politics, "Of These I Sing," including the title song, "Who Cares," and "Love Is Sweeping the Country."



Martha Wittkowska, Polish opera singer, will sing on the Alms & Doepeke program through WKRC at 8:15 Sunday night (January 24). Mme. Wittkowska sang with the Covent Garden Opera Company in London before returning to America from her European studies. In this country she has sung six seasons of contralto roles with the Cincinnati Zoo Opera Company, and with the opera companies in Philadelphia, Detroit, Chicago and St. Louis.

Another Mystery Thriller Adds Chills to Ether

Yet another mystery thriller takes the air.

This one is "The Witching Hour," which WKRC and other Columbia stations will broadcast at 5:30 p. m. Saturdays, beginning this week (January 23), when "The Vampire" will be presented.

John Dailey, Chicago radio actor, will appear every week as Dr. Stuart, lonely student of the supernatural in whose home the action of the first play unfolds. Brooks and Ross, although not claiming supernatural powers, will brighten the program with musical interludes.

Representative Fiorello H. LaGuardia, New York, will speak on "Taxes, Lobbying, and the Freedom of the Air" on WLW and NBC-WJZ at 8 p. m.

The Revelers will sing Rimsky-Korsakoff's "Song of India," and Sousa's band will play the "U. S. Field Artillery March" and Luigi's "Egyptian Ballet" on the Goodyear program at 8:30 p. m. on WSAI (NBC-WJZ).

Thursday, January 28

W. C. Fields, the comedian, takes Don Kelley to Stars' Night at the Hotel Roosevelt in Hollywood in the Radio Newsreel of Hollywood which WLW will broadcast at 6:30 p. m.

Zona Gale, author, will be guest artist with Jill and Judy at 11:45 a. m. on WENR (870 kc.) and other NBC-WJZ stations.

This Log Helps You Dial Out-of-Town Radio Stations

To simplify the tuning of chain stations, the following log of network stations is given, with each chain headed by the New York station which broadcasts its programs: (Those marked * take either NBC network.)

NATIONAL BROADCASTING COMPANY

WJZ, New York..... 760 kc.	WMAQ, Chicago..... 670 kc.
KDKA, Pittsburgh..... 980 kc.	
KYW, Chicago..... 1020 kc.	WEAF, New York..... 660 kc.
*WCKY, Covington..... 1490 kc.	*WENR, Chicago..... 870 kc.
*WENR, Chicago..... 870 kc.	WGY, Schenectady..... 790 kc.
WGAR, Cleveland..... 1450 kc.	*WHAS, Louisville..... 820 kc.
WJR, Detroit..... 750 kc.	WSAI, Cincinnati..... 1330 kc.
WLW, Cincinnati..... 700 kc.	WTAM, Cleveland..... 1070 kc.
*WLS, Chicago..... 870 kc.	WWJ, Detroit..... 920 kc.

COLUMBIA BROADCASTING COMPANY

WABC, New York..... 860 kc.	WFBM, Indianapolis..... 1230 kc.
KMOX, St. Louis..... 1090 kc.	WHK, Cleveland..... 1390 kc.
WADC, Akron..... 1320 kc.	WKRC, Cincinnati..... 550 kc.
WBBM, Chicago..... 770 kc.	WLAP, Louisville..... 1010 kc.
WCCO, Min'n'polis-St. Paul 810 kc.	WSPD, Toledo..... 1340 kc.



Grace Allen and George Burns, billed in vaudeville as "Burns and Allen," will be heard with Ray Perkins and Rudy Vallee on the Fleischmann Hour Thursday night (January 28) at 8 o'clock on WSAI and other NBC-WEAF stations.

Ray Perkins, RADIO DIAL's star columnist, who is to be a kind of permanent guest of Rudy Vallee's program for some weeks, will be part and party to the Burns and Allen sketch Thursday night.

On the stage George Burns is a high-pressure go-getter and Grace Allen is a "dumb Dora" unable to appreciate his witticisms. After two years in vaudeville, Burns and Allen decided to make their partnership permanent, and so they were married. George began his vaudeville career as a dancer and developed into a comedian. Grace was a little Irish girl with a jig and a brogue. Now her greatest claim to distinction is her baby talk. The team makes six film shorts a year in addition to their vaudeville tours.

Milton Moore is Crane & Breed Soloist Sunday

Milton Moore, who won the Mabley & Carew radio auditions on WKRC same weeks ago, is the baritone soloist on the new Crane & Breed program on the station at 2:15 p. m. Sundays. In keeping with the program name, "On Wings of Song," the orchestra and soloist feature semi-classical music and ballads of a melodious type woven into a restfully flowing concert.

Armco Band Will Play High School Contest Piece

High school bandmen all over the country will be listening to the Armco Band at WLW Monday night (January 25) at 9 o'clock to hear Frank Simon conduct his National High School Band Contest number in Class A.

William Bell, bass player of the Cincinnati Symphony, will play as a bass tuba solo "Aquarelle Polka," by T. V. Short. Bell frequently played bass horn and tuba solos on the national networks last summer when he was a member of Goldman's Band. Other numbers on the Armco program will be the Spanish march "Aguero" (Jose Franco), "Turkey in the Straw" (Guion), "A Music Box" (Liadow), and "El Capitain" march by Sousa.

Russian Cellist Plays Solo With N. Y. Philharmonic

Gregor Piatigorsky, 28-year-old Russian cellist who has appeared with great success in recital and concert tours of the United States, will broadcast with the New York Philharmonic Symphony Orchestra over WKRC and Columbia from 3 p. m. to 5 o'clock Sunday (January 24).

Piatigorsky will play with the orchestra Schumann's "Concerto for Violoncello, in A Minor." The concert will open with the first broadcast performance of Prokofieff's "The Prodigal Son." Following the intermission with its program notes by Olin Downes, the orchestra will conclude with Tschaikowsky's "Fifth Symphony, in E Minor." Bruno Walter will conduct.

If We Had Our Own Radio Station

By JACK SNOW

Announcer:

Good evening, Ladies and Gentlemen, this is Pat talking to Mike. Pardon me, I mean Microphone and we're broadcasting the Annual Shamrock Banquet from Dublin, Ireland. The chorus will now rise and sing "Hosanna."—"Hosanna Body Here Seen Kelley!"



Dusolina Giannini, who although a native of Philadelphia is known for her lyric soprano voice in Europe as well as the United States, will be the guest artist on the General Electric Circle program at 5:30 p. m. Sunday (January 25) on WSAI and other NBC-WEAF outlets.

In her radio program Sunday Miss Giannini will sing "Annie Laurie," "Songs My Mother Taught Me," "Cielito Lindo," "Just A-Wearyin' For You," "I Love You Truly," "Manella Mia," "Ave Maria."

Capper-Dill Radio Team Enlightens Women Listeners

Senators Arthur Capper, Republican of Kansas, and Clarence C. Dill, Democrat of Washington, share the broadcast at 11:30 a. m. Tuesdays on WKRC (CBS) called "Current Questions Before Congress." That is, Capper one week discusses the questions being debated in Congress, and Dill takes his turn at the microphone the next week, in one of the first programs designed to keep women informed of political, governmental and economic problems of the day. Senator Dill, father of the present radio law and author of other pending radio legislation, will speak this Tuesday (January 26).

PARDON MY Imperkinsence!

Being Some Perky Palaver From the Programs of RAY PERKINS

Hi there, Radio Dialers!



Comes the merry month of January—that gay and blithe-some post-holiday season fraught with headcolds and headaches! All that's left of Christmas is a sheaf of little papers reposing on Father's desk, each bearing Father's name with two little letters after it—Dr., which means that by this time Father needs a doctor.

In our town, Hickville-on-the-Hudson, the Automobile Show is over, but automobile traffic is still being tied up each day at the rate of 15 or 20 knots an hour. In spite of this, they are building Radio City in the heart of town. By the time it's finished nobody will be able to get to it.

Our Mr. Willy Nilly has decided to become an automobile salesman as soon as he can raise a wax moustache. He already wears spats.

Willy says at the recent Automobile Show they had a lot of trouble with the cat at Grand Central Palace. She kept hanging around the Austin exhibit and three times they caught her dragging one of the Austins down two flights of stairs to the basement.

NOTICE TO THE PUBLIC!

The radio programs I am in are put on by the advertisers solely for your benefit. It hurts them more than it does you.

While listening in, therefore, please refrain from talking, whistling, coughing, shuffling (feet or playing-cards), blowing (nose or horn), reading, writing and arithmetic. And oh yes—screaming.

Do not pound on the radio with an axe.

Firing of pistols into the loud speaker is strictly forbidden and will get you nowhere anyway.

To get the most out of my programs assume a comfortable position, relax, and think of something pleasant such as a new hat, a raise in salary, or the demise of a hitherto unknown relative, intestate.

Some listeners enjoy hanging by their toes from the picture moulding, but this requires practice and tends to scuff the tips of the shoes, rendering them unfit for wear with evening clothes.

Remember, radio listening is an art like pugilism—you have to be able to take it on the chin and grin.

The importance of the chin as a portion of the anatomy has long been overlooked. People with highly fragile chins don't get very far. A man has to use his chin nowadays for much more than growing whiskers.

In some parts of the country they refer to talking as Chin Music. My Great Aunt Pandora was an accomplished Chin Musician. Everyone called her a wonder at talking because wonders never cease.

Aunt Pandora could waggle her chin up and down vertically at such a terrific rate of speed that half the time it would be all chapped from windburn.

A lotion that I advertise on Tuesdays and Saturdays is excellent for that sort of thing. If you hear of any ladies whose chins get chapped from too much wagging tell them about our lotion. Of course none of you could be in that predicament, but you might know of someone—the lady next door, maybe.

Little Antonia Gillman, aged eight, who plays the lead in Lucky Kids (WKRC-CBS 5:45 Tuesday, Thursday, Saturday), wants to do up her hair. Her two long "pigtales" are too convenient; production managers grab them to draw her to or away from the microphone.



Frances Bowdoin

Frances Bowdoin a few weeks ago was an 18-year-old girl in the Ozarks. Still 18, she's now a radio broadcaster and at 5:15 p. m. daily, except Sunday, on WTAM (1020 kc.) and other NBC-WEAF stations she gives her impressions of and reactions to New York City and its people. Recently she announced she would give away this picture of herself and her cat with her signature and the kitty's paw print. In two days she had 15,000 requests, and they're still coming in. Frances is interviewed on the air by Wade Arnold, an Oklahoma newspaperman who now writes for NBC.

Around the Dial

By THE DIAL TWISTER

That America At Work feature (NBC over WLW, Saturday at 5:15 p. m.) has the earmarks of sound psychology. It's about time that radio did something to snap the country out of this fear spree.

British announcers must remain anonymous, even in publicity matter. Try to imagine the outraged wails from studios if that rule were clamped down on American program callers.

The sponsors of the Stebbins Boys (NBC over WSAI, Monday to Friday inclusive, at 6:45 p. m.) have their doubts about people wanting to keep on hearing this top-notch attraction. Of course a moaning baritone or a hot jazz band would be ever so much more unique. Oh, yeah?

Columbia is "pointing with pride" to the fact that it didn't repeat a single tune on its 5½-hour New Year's Eve dance program. Another case of love's labor lost.

That new series of Canadian Mounted dramas (NBC over WLW, Monday at 10 p. m.) is a guaranteed "click" if you're one of the innumerable mystery-hounds. But the premiere was spoiled by having the jury convict a murderer. The United States, of course, has outgrown that barbarous custom.

This Bath Club (CBS over WKRC, daily except Sunday at 8 p. m.) has overlooked a real bet. "Singin' In The Bathtub" is the



made-to-order theme tune, or aren't the fair ones supposed to warble while splashing? It turns out, too, that a lot of these famous beauties haven't ravishingly beautiful voices.

They say Roxy will be back on the air soon in person. The sooner the better.

Many listeners are surprised that WSAI's dropping its power from

1000 to 500 watts at sunset (5:45 p. m. these days) makes such a slight difference in volume. It's just a fine demonstration of the scientific law that you have to increase a station's power four times in order to double the volume.

Jeff Davis is doing good work over at WCKY (Monday, Wednesday



day and Saturday at 11 p. m.). He's breezy and human and interesting.

Real Folks have turned up on Columbia (WKRC, Sunday at 5 p. m.) minus "Judge Whipple" as of yore. The explanation is that the snoring jurist used to be played by Ed Whitney. But he happens to be a staff actor at NBC. Hence the new voice.

And Collier's broadcast the 10 most beautiful girls from the Scandals. At least the announcement said they were. Lacking television, any ten wall-flowers would have been just as alluring.

Paul Whiteman is fine-combing the country for new radio talent. Probably we're a hopeless case. But how about at least a fighting chance for some new program ideas?

The American Taxpayers' League program (NBC over WLW, Wednesday at 8 p. m.) finally got around to letting a mere taxpayer, instead of an official spender, speak his mind. Dr. William Gerry Morgan was the lucky one. The broadcasters could do something for their country by putting somebody like him on the air every night.

Dr. Harry Emerson Fosdick's National Vespers (NBC over WCKY, Sunday at 5 p. m.) now is broadcast under the auspices of 50 state and city church councils and federations. Here's concrete recognition of the value of religious broadcasting.

OHIO SCHOOL OF THE AIR

FRIDAY, JANUARY 22

2 p. m. Learn to Sing: "The Owl."
2:20. Health: "Sleep," Margaret Casey.
2:40. When They Were Young: "Theodore Roosevelt," Ruth Young White.

MONDAY, JANUARY 25

2 p. m. Current Events: Harrison Sayre.
2:20. Civil Government by Those Who Govern: Thomas Edmondson, director of Industrial Relations.
2:40. Nature: "The Bat."

TUESDAY, JANUARY 26

2 p. m. Literature and English: "Hamlet," Crosley Players.
2:30. Little Journeys in West Virginia.

WEDNESDAY, JANUARY 27

2 p. m. Physics: "Historical Sketch of Development of Electricity," D. A. Wells.
2:20. History Dramalog: "Hamilton-Burr Duel," Crosley Players.
2:40. Art Appreciation: "The Escaped Cow," William Vogel.

THURSDAY, JANUARY 28

2 p. m. Geography: "From New York City to Philadelphia," Dr. W. R. McConnell.
2:20 p. m. "Brazil, its Lights and Shadows," Dr. McConnell.
2:40 p. m. Stories: "The Chicks That Stayed Up Late," Mrs. Tabby Gray, "The Wolf and the Seven Little Kids," Bessie Gabbard.



It's Ruth Armstrong who plays those sparkling piano accompaniments to Bob Burdette's morning exercises at WLW. Ruth has been getting up for the early morning program for almost five years and has almost come to the point where she doesn't mind it.

Beaux Arts Ball Will Be Described

The Beaux Arts Ball, one of the most colorful events of the New York social season, will be described on the air from the Waldorf-Astoria hotel by Ted Husing at 12:30 Friday night (January 22) on WKRC and other Columbia stations. This year the ball will attempt to duplicate in costume and setting the First Inaugural Ball of the United States of America, which was held May 7, 1789.

PAUL WHITEMAN

(Continued from page 1)

have been on national networks before.

This is a new Paul Whiteman who has been visiting Cincinnati. In the first place, the hundred pounds you've been hearing about really have disappeared, along with a couple of the Whiteman chins. He's a dapper looking jazz king now, if anyone six feet two can be dapper. His clothes are perfect, and he's charming to meet and talk with. His smile is delightful and so is his voice, which he used on the air for the first time New Year's day and which is already bringing him hundreds of new fans who now feel his personality more than ever before. In the second place, he has a new wife—the former Margaret Livingston of the movies, who, red-haired and lovely, is with him on his RKO tour.

He is still experimenting with music just as he did in those days during the war when he used his 40-piece sailor band to try out his ideas on symphonic jazz. Now he's experimenting with radio and music. He won't tell you, but his manager will, that his advice taught one great moving picture company how to record music and how to manage the sound track on its talking films. He had that stunt for the Oldsmobile program of accompanying singers thousands of miles away worked out long before radio engineers would agree that it was possible.

Whiteman says he knew it was possible because he'd tried it out first by having his band

BUD, LES AND JOE



Bud, Les and Joe (from top to bottom) sing weird and haunting harmony at WCKY (they selected those adjectives from among the ones we picked out to describe them). Bud (South) is the only one of the three who is married. Les (Webb) writes the harmony for the trio and coaxes indigo chords from an over-grown ukulele to accompany them. Joe (Halpius) just sings. They are buddies on and off the air.

accompany a singer in another room. Paul couldn't see much difference between the wall of a room and the distance from Chicago to Hollywood.

(Radio Dial will continue the interview with Paul Whiteman next week with the story of his life, and how he came to be the King of Jazz.)

WCKY Takes NBC Drama Program

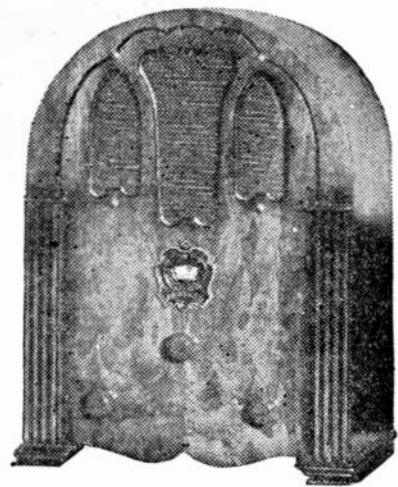
Saturday Matinee, a series of one-act plays, will be added to WCKY's schedule at 4:30 p. m., Saturday (January 23), bringing the presentation of "Land of Heart's Desire," a poetic Irish fantasy by William Butler Yeats. The plays are broadcast from the Chicago NBC studios.

Two Bands From San Francisco Play Broadcast

Two favorite San Francisco dance orchestras will share the Lucky Strike Dance with Walter Winchell chattering to their leaders across the continent in the broadcast at 10 p. m. Saturday (January 23) on WSAI and the NBC-WEAF network.

Anson Weeks and his orchestra will play from the Mark Hopkins hotel. Tom Gerun's orchestra will broadcast from the Bal Tabarin.

GREATER RADIO PERFORMANCE AND LOWER PRICE!



The Crosley
LITLFELLA

\$36³⁶
COMPLETE WITH FIVE TUBES

More For Your Money

You get more for your money in the Crosley LITLFELLA than in any other radio in the same price range. Its SUPER-HETERODYNE circuit makes it possible to tune in more stations than is possible with a receiver that is not a super-heterodyne. The new type Pentode tube offers more power and better performance than the old type tube and a Variable Mu tube takes out background noises. The Continuous (Stepless) Static and Tone Control feature enables you to bring out the mellow or brilliant tone of any program to the exact shade desired. A Crosley Dynamic Speaker assures life-like reception without tone distortion.

Compare these amazing features—and they are only a few of those incorporated in the LITLFELLA—with those found in other receivers. Then you will know that only Crosley offers you these modern radio refinements in a receiver for as little as \$36.36, complete with tubes. Why pay more for any other five-tube radio when Crosley offers you just as many tubes and better features for less money.

THE CROSLLEY DISTRIBUTING CORPORATION
DISTRIBUTORS

1329 ARLINGTON STREET CINCINNATI, OHIO

You're There With a

CROSLLEY

SPECIAL INTRODUCTORY OFFER



We need immediately 100,000 users the country over to tell their friends of the improvement of using Pentode tubes in place of 245's, particularly in sets using 245 push-pull. There is a tremendous improvement in depth of tone and set sensitivity. The improved amplification brings in weak signals. The Pentode Tube is inserted in Na-aid 954KPC adapter and the adapter put in the socket in the set. No change in wiring. Money back — Adapters list at \$1.00—But for the first ten people that order from any town we will send two adapters for \$1.00 or two pentode tubes and two adapters postpaid for \$3.00. If after trying them in your set, you are not more than pleased with the results, return your purchase anytime within five days and your money will be instantly refunded. This ad probably will not appear again. Order today.

ALDEN MANUFACTURING COMPANY
Dept. S Brockton, Massachusetts

FREE!

"Forward to Prosperity"

To the first five people making application in person for free instructions in Leathercraft, material for making one product, cost of which will not exceed \$5.00. Think of all the fine things to be made of leather. They can be made with real hand-tooled designs and at a very low cost. Therefore spare time can be made valuable.

Leathercraft Studios, Inc.
411-413 Race Street
Cincinnati, Ohio

RADIO DIAL

6 Months for

\$1.00

26 newsy
issues!

official
complete
accurate

Mail this
Coupon →

enclose
\$1

RADIO DIAL
22 E. 12th Street
Cincinnati, Ohio

Gentlemen:

Enclosed find One Dollar (\$1). Send RADIO DIAL for 6 months.

[] New Subscriber [] Renewal

Name

Address

City..... State.....

2-B

PROGRAMS FOR FRIDAY, JANUARY 22, ON THIS PAGE

WSAI (225m.—1330 kc.)

Noon—G. E. Home Circle (NBC)
12:50—Live Stock Reports
3:00—Woman's Radio Review (NBC)
4:00—Betty Moore Decorating Talk (NBC)
4:15—Crosley Dealers' Salute
4:30—Concert Program
5:15—Skippy (NBC)
5:30—Celebrated Compositions
5:45—Listerine: Russ Columbo (NBC)
6:00—Hollywood News Reel
6:15—Memory Hour
6:30—Talk by Alice Richards
6:45—Stebbins Boys (NBC)
7:00—Florists' Program: Rudolph Friml
7:15—Campbell Orchestra (NBC)
7:30—Prince Albert Program (NBC)
7:45—Trials of the Goldbergs (NBC)
8:00—Cities Service Concert, with Jessica Dragonette and Cavaliers
9:00—Clickquot Club Night Club (NBC)
9:30—Pond's Dance (NBC)
10:00—NBC Artists' Service (NBC)
10:30—RKO Theatre of the Air (NBC)
11:00—Kay Kayser's Orchestra
11:30—Sign off

WFBE (250m.—1200 kc.)

Noon—Around the Town with Frank and Larry
12:30 P. M.—How It Began
12:45—Luncheon Melodies
1:00—Studio
1:15—Story Telling Time
1:30—Slumber Songs
2:00—Charles Daunt, tenor
2:15—Mrs. Julian Schwab, bridge lessons
2:45—Elinor Hurdle, readings
3:00—Forgetmenots, music
3:15—Adelaide Apfel, piano
3:30—Marion Hemple, songs
3:45—Studio
4:00—Tito Schipa, tenor recordings
4:30—Audrey Gillespie
4:45—Bertha Mathers & Mrs. Hahn, songs
5:00—Central Vine Street Business Men's Association
5:15—The Pirates' Club
5:30—Bee Campbell, songs
5:45—Jules Sein, songs
6:00—Music Masters
6:15—Studio
6:30—Sonada's Sports Forecaster
6:35—Bag and Baggage
6:45—Max Fisher's Orchestra
7:15—Post Question Box
7:30—Sports Review, Harry Hartman
7:45—Jewell Litz and Mildred Prigge, violin and accordion
8:00—Studio
8:15—Radio Sunbeams
8:30—Bill Holland's Melodians, La Vista
9:00—The Luckey Boys, piano and banjo
9:15—Dance Time
9:30—The Wrestling Matches
11:00—Max Fisher's Californians from Chatter Box

WKRC (545m.—550 kc.)

Noon—S. C. Johnson and Son: Stanley High
12:10 P. M.—Skip and Step
12:30—Cincinnati Merchants' Program
1:00—Pabst-ett Varieties; Howard Trio (CBS)
1:15—Julia Hayes Household Hints
1:45—Studio
2:00—Cincinnati Trade School: Piano
2:15—Burck-Bauer Organ Melodies
2:30—American School of the Air (CBS)
3:00—U. S. Marine Band (CBS)
3:30—Arthur Jarrett (CBS)
3:45—Columbia Educational Features (CBS)
4:00—Light Opera Gems (CBS)
4:45—Steinberg Program
5:00—Studio
5:30—Uncle Olie Kre-Mel Gang (CBS)
5:45—Wrigley: Lone Wolf Tribe (CBS)
6:00—Pat Gillick, organ
6:15—Sport Review; Stocks; Studio
6:40—A. O. Rust: Happy Feet
6:45—Wurzberg: The German and His Parrot; Lange Time (6:59)
7:00—Wrigley: Myrt and Marge (CBS)
7:15—Cremo: Bing Crosby (CBS)
7:30—Pompeian: Boswell Sisters (CBS)
7:45—Camel Quarter-Hour: Morton Downey (CBS)
8:00—Linit: The Bath Club (CBS)
8:15—Barbasol: Singin' Sam (CBS)
8:30—March of Time (CBS)
9:00—Pillsbury Pageant (CBS)
9:30—Woodbury Co.: To the Ladies, Leon Belasco's Orchestra (CBS)
9:45—Jarman Shoe: Friendly Five Footnotes; Casey Jones (CBS)
10:00—Cafe Budapest Orchestra (CBS)
10:30—Chesterfield: Alexander Gray, Nat Shilkret Orchestra (CBS)
10:45—Studio
11:00—Weather; Time Signal; Sports Review
11:15—Howard Barlow Symphony (CBS)
11:30—Memories
11:45—George Olsen Orchestra (CBS)
Midnight—Ben Bernie's Orch. (CBS)
12:30 A. M.—Beaux Arts Ball (CBS)

WCKY (202m.—1490kc.)

Noon—Luncheon Concert
12:15 P. M.—Johnson Wax Program
12:20—Interlude
12:25—Live Stock Market Report
12:30—Farm and Home Hour (NBC)
1:30—Organ Reveries
2:00—Popular Dance Tunes
2:15—Moods Indigo
2:30—Music Masters
2:45—Princess Obolensky Youth Matinee (NBC)
3:00—Siesta Musicale
3:15—Matinee Melodies
3:45—Kapua's Hawaiians
4:00—Rhythmic Serenade (NBC)
4:15—Stars of Today
4:30—Freddy and Tom, world adventures
5:00—"Snow" Drifts, Jack Snow
5:15—Asher Sizemore and Little Jimmy
5:30—White Rose Laundry Program
5:45—Radio and Television Institute
6:00—Tommie and Willie
6:30—Royal Vagabonds with Ward Wilson (NBC)
6:45—Late Dance Tunes
7:00—Amos 'n' Andy (NBC)
7:15—Les, Bud and Joe
7:30—Parody Man
7:45—Chico 'n' Peppina
8:00—Nestle Chocolateers (NBC)
8:30—"It Pays to Advertise"
9:00—Sundodgers
9:30—Tommy Thomas Music, Club Royal
10:00—Paul Whiteman's Pontiac Chieftains (NBC)
10:30—Clara, Lu and Em (NBC)
10:45—Waves of Melody (NBC)
11:00—Coca Cola
11:15—Slumber Music (NBC)
11:30 to Midnight—Jack Denny's Orchestra (NBC)

WLW (428m.—700 kc.)

Noon—Tuxedo Fiddlers
12:15 P. M.—Pat Barnes in Person (NBC)
12:30—River Reports
12:40—Piano Solos
12:45—Market Reports
12:50—Live Stock Reports
1:00—National Farm and Home (NBC)
1:31—Netherland Orchestra: Henry Busse
2:00—Ohio School of the Air
3:00—Pat Harrington, tenor
3:15—Talk by Truman S. Morgan (NBC)
3:30—Talent Bureau Program
4:00—A. & P. Orchestra
4:30—Organ Matinee, Hershel Luecke
4:45—The Chatter
5:00—Words and Music—Joe Ries
5:15—Southern Singers Quartet
5:30—Kellogg: Singing Lady (NBC)
5:45—Little Orphan Annie (NBC)
6:00—Old Man Sunshine
6:15—Netherland Orchestra: Henry Busse
6:30—Mail Pouch: Jim Corbett
6:45—Lowell Thomas (NBC)
7:00—Amos 'n' Andy (NBC)
7:15—Threesome: vocal trio
7:30—Gibson Orchestra: Kay Kayser
8:00—Crosley Musical Mysteries
8:30—Smith Brothers (NBC)
8:45—Sisters of the Skillet (NBC)
9:00—Dayton Thoroughbreds: Henry .. Thies Orchestra
9:30—Armour Concert (NBC)
10:00—Life Savers Success Reporter: Ruth St. Denis, dancer
10:15—Netherland Orch.: Henry Busse
10:45—Bob Newhall Sports Slices
11:00—Van Camp Night Caps
11:30—Veterans of Foreign Wars (NBC)
12:30—William Stoess Orchestra (NBC)

Network Programs

6:00 P. M.—Dave Abrams' Barn Orchestra. WABC wvwa wch wad wlap
—Waldorf-Astoria Orchestra. WEAf whas (wtam wenr off 6:15)
—Raising Junior, domestic skit. WJZ kyw wgar
6:15—Peter Van Steeden's Orchestra. WJZ wenr
—Kellogg's Singing Lady. (NBC) wenr
6:25—John B. Kennedy, talk. WJZ wenr
6:30—Vaughn de Leath, with Shapiro and Shefter, piano duo. WABC wsd wvwa
—Lone Wolf Tribe, an Indian story. (CBS) wbbm wcco wfm kmox
—Rex Cole Mountaineers: hill-billy music. WEAf
—The Three Mustachios, male trio. (NBC) wenr kstp wapi
—The Royal Vagabonds, with Ward Wilson. WJZ wcky whas wmaq wapi
6:45—Ross Gorman's Biltmore Hotel Orchestra. WABC wfbm wvwa wch wlap
—The Stebbins Boys: comedy sketch. WEAf wsei wtam wgy wwj
—Lowell Thomas. WJZ wlv kdka
—Little Orphan Annie. (NBC) wenr kstp wenr wgn
7:00—Wrigley: Myrt and Marge. WABC wkrc wsd kmox wad
—"Crime": Charles Francis Coe. WEAf wwj
—Amos 'n' Andy. WJZ wlv wcky kdka wjr wgar
7:15—Cremo: Bing Crosby. WABC wkrc
—Campbell Orchestra. WEAf wsei wgy wenr
7:30—Pompeian Make-up Box: Boswell Sisters, songs. WABC wkrc wbbm wcco wfbm whk wvwa wch wad wlap
—Prince Albert Quarter Hour: Alice Joy with Orchestra. WEAf wsei wtam wgy kstp
—Snoop and Peep. WJZ wenr kdka
7:45—Camel Quarter Hour: Morton Downey, Tony Wons, orchestra. WABC wkrc wcco wfbm whk wsd kmox wvwa wch wad wlap
—The Goldbergs. WEAf wsei wtam wgy wenr wwj
—Esso Program: "Believe It or Not" Ripley, orchestra. WJZ kdka
8:00—Linit: The Bath Club, interview, male quartet, orchestra. WABC wkrc wgn wcco wfbm whk wsd kmox wad
—Cities Service Concert Orchestra, with Jessica Dragonette and Cavaliers. WEAf wsei wtam kstp kyw wwj wgy (off 8:30)
—Nestle Program: Leonard Joy's Orchestra, Buddy Rogers, guest artist. WJZ wcky kdka wls wjr wgar
8:15—Singin' Sam, the Barbasol Man. WABC wkrc wgn wcco wfbm whk wsd kmox wad
8:30—March of Time: Dramatization of Outstanding News Events. WABC wkrc wgn wcco whk wsd kmox wad
—Smith Brothers: "Trade" and "Mark," vocal duo. WJZ wls wgar wlv
8:45—Sisters of the Skillet, comedy and songs. WJZ wlv kdka wls wgar
9:00—Pillsbury Pageant: Theo. Karle, tenor; Toscha Seidel, violinist; Sam Lanin's Orchestra. WABC wkrc wgn wcco whk wsd kmox wad
—Clickquot Club: Harry Reser's Eskimos, quartet. WEAf wsei wgy wls wwj

NETWORK PROGRAMS

—Friendship Town, small town sketch. WJZ whas kdka wjr kyw kstp wgar
9:30—Jergens: To the Ladies, Leon Belasco Orchestra; Tito Guizar, tenor. WABC wkrc wgn wcco whk wsd kmox wad
—Pond's Dance: Leo Reisman Orchestra. WEAf wsei wtam wgy wenr
—Armour Program: Orchestra and vocalists. WJZ wlv whas kdka kyw wjr wgar kstp
9:45—Friendly Five Footnotes: "Casey" Jones, tenor, orchestra, tap dancer. WABC wkrc wgn wcco whk kmox
10:00—Cafe Budapest, orchestra, directed by Emery Deutsch. WABC wkrc wovo whk wsd kmox wch wlap
—NBC Artists' Service Program: Mme. Juliette Lippe, soprano, guest artist; Nellie Revel, commentator. WEAf wsei wmaq wgy wwj kyw
—Whiteman's Pontiac Chieftains. WJZ wenr wjr wgar wcky
10:30—Chesterfield: Alexander Gray, Nat Shilkret's Orchestra. WABC wkrc wovo wbbm wcco whk wsd kmox wch wad
—RKO Theatre of the Air: Stage and screen stars. WEAf wsei whas wtam wgy wenr wwj
—Clara, Lu and Em, gossip. WJZ wcky kdka kyw wjr wgar wgn
10:45—Colonel Stoopnagle and Budd. WABC wad
—Wrigley: Myrt and Marge. (CBS) wbbm wcco wlap
—Waves of Melody, orchestra and tenor. WJZ wcky kdka kyw wjr wgar
11:00—Cafe de la Paix Orchestra. WABC
—Cremo: Bing Crosby. (CBS) wgn wovo wcco kmox wlap
—Marion Harris, songs. WEAf wtam wwj
—Slumber Music, string ensemble. WJZ wjr (wcky wmaq on 11:15)
—Amos 'n' Andy. (NBC) whas wenr wmaq kstp kyw
11:15—Howard Barlow and Columbia Symphony Orchestra. WABC wkrc wovo wsd wch wad wlap
—Vincent Lopez Orchestra. WEAf (wtam wwj on 11:30)
—Prince Albert Quarter-Hour: Alice Joy, with Orchestra. (NBC) whas wenr

SELL RADIO DIAL

We want more boys to make good money in their spare time selling RADIO DIAL. Pleasant, easy work, and you'll be surprised how quick the profits grow.

Get in now and build yourself a steady trade.

J. Louis Motz News Co.
918 E. Court St., Cincinnati, Ohio
Phone CHerry 3205

Letter Box

"Please let me commend you for your recent editorial on 'Radio is Cleaning House.' This editorial mentioned jokes and songs which were not exactly fit for the home circle. I sent this editorial to one of the broadcasting systems whose entertainers have sometimes been careless along this line. Coming a little closer home now, I have noticed a few paragraphs in Radio Dial which could bear a little pruning—particularly in Ray Perkins' column recently. His remarks are witty and bright enough without anything tending towards the smutty."

Russell F. Briggs,
Macon, Ga.

Mr. Briggs' point is well taken. Radio Dial and Ray Perkins will watch themselves in the future. Mr. Briggs also sends along an article on "Doc" Brinkley, of Milford, Kans., and XER, Mexico, from the January 16 issue of Colliers'. It will be of interest to listeners already interested in the Kansas goat gland expert.

"I wonder if you will bear with me for some comments. I am one of just typical folks. There are programs on that are not boosting the radio game; even the youthful (at least some I know) are growing peevishly wearied. Why, they make one query, 'How long, oh Lord, how long?' Yet there are enough programs to keep one from no longer dialing. Is the shoddy due to informative lack upon the part of sponsors or lack of talent? Surely not the last. Some of the songs are positively so suggestively

NETWORK PROGRAMS

11:30—George Olsen Orchestra. WABC (wad wlap on 11:45)
—Camel Quarter Hour: Morton Downey, Tony Wons, orchestra. (CBS) wgn wovo
—Veterans of Foreign Wars Program. WJZ whas wenr wlv
Midnight—Ben Bernie's Orchestra. WABC wkrc wcco wsd wlap (wbbm on 12:15)
—Ralph Kirby, tenor. WEAf wtam wwj
12:05 A. M.—Coon Sanders' Orch. WEAf
12:30—Beaux Arts Ball. WABC wkrc wcco wsd wlap
—Waldorf-Astoria Orchestra. WEAf
—William Stoess and His Orchestra. WJZ wlv wenr
1:00—Roseland Ballroom Orch. WABC
1:30—Dave Abrams' Barn Orch. WABC

rotten as would make a manager of a burlesque show or cheapest vaudeville hesitate at putting it on. You know this. You also know there is so much crooning as to make one about sure the babies' cradles are being robbed. "You get them for nothing," you say? Yes, but I buy. And I believe in the game of reciprocity. I buy from the sponsors who put on good programs.

"By the way, there is a listing Tuesday at 10:15 p.m. on WJZ called Bavarian Peasant Band, that is a lilting to-be-prized melodiousness. How I wish WLW—always certain of clear reception, would include it."

L. Johnson,
Springfield, Ohio.

Louisville Listener: The Stebbins Boys broadcast at 6:45 p.m. eastern time on WSAI, WGY, WTAM, and other NBC-WEAF stations in the eastern time zone, and at 6:45 p.m. central time on KYW, WOC, WMC, WSB, WSMB, WDAF and other NBC-WEAF stations in the central time zone. Similarly, Amos 'n' Andy broadcast at 7 p.m. eastern time, and at 10 p.m. central time for Louisville, Chicago and stations west of there. The Prince Albert program is broadcast at 7:30 p.m. eastern time, at 10:15 p.m. central time, and at 10:45 p.m. (Continued on page 6)

Tony Wons, believe it or not, gets almost as many missives from flappers as from older folk.

Tune in on



"FRIENDSHIP TOWN"

FRIDAY, 9:00 P. M., E.S.T.
NBC Coast to Coast Network

Vaseline

REG. U. S. PAT. OFF.

PREPARATIONS

Presto! Change your old set to a NEW 1932 PHILCO

No miracle! No magic! Just stop at FRANK'S, pick out the model you like, and ask about the trade-in value of your old set. FRANK'S generosity will amaze you! The NEW 1932 PHILCO is the last word in radio reception! A radio that really is a musical instrument! Hear it! See it! Today!! \$36.50 and up, complete.

We service all makes of radios. Reasonable charges. Complete satisfaction guaranteed. Tubes tested FREE! For service, call Parkway 1597.

FRANK'S

MUSIC AND RADIO SHOP

Cincinnati's Personal Interest Store

Open 9 a. m. to 9 p. m.

1207 Vine Street,

CINCINNATI

Just above 12th

Foot Metal Weather Strips
Will Last A Lifetime
Doors and Windows Will Not
Stick or Rattle
Manufactured Exclusively by the
METAL PRODUCTS CO.
4108 Spring Grove Ave.
Klrby 0320
Only Weather Strip Actually Made
in Cincinnati

COMPLETE PROGRAMS FOR SATURDAY, JANUARY 23, ON THIS PAGE

WSAI (225m.—1330 kc.)

8:00 A. M.—Gene and Glenn (NBC)
8:15—McCormick Fiddlers
8:45—WSAI Morning Dance Concert
9:15—Knox Sparkling Music (NBC)
9:30—Popular Musicale
10:30—Mrs. Blake's Radio Column (NBC)
10:15—Harmonica Bill
10:30—Musical Forum
11:15—Radio Household Institute (NBC)
11:30—Live Stock Reports
11:45—Popular Music
Noon—Sign off
1:45—Foreign Policy Assn. Luncheon
3:00—Dancing Melodies (NBC)
3:15—Opera: "Barber of Seville" (NBC)
5:15—"Skippy" (NBC)
5:30—Contract Bridge (NBC)
5:45—Memory Hour
6:30—Carroll Dickinson & Orch. (NBC)
6:45—"The Negro in Literature," Irvin S. Cobb (NBC)
7:00—Nick Lucas, songs (NBC)
7:15—Law That Safeguard Society (NBC)
7:30—Prince Albert Program (NBC)
7:45—Trials of the Goldbergs (NBC)
8:00—Cherniavsky's Greystone Orchestra
8:30—National Advisory Radio Education Council (NBC)
9:00—Pryor's Goodyear Band and Reveler's Quartet (NBC)
9:30—Club Valspar (NBC)
10:00—Lucky Strike Dance with Walter Winchell (NBC)
11:00—Gibson Orchestra: Kay Kayser

Network Programs

6:00 P. M.—Arthur Jarrett, songs; Freddie Rich Orchestra. WABC wbbm wwva wpsd wchd wadl wlap
—Waldorf-Astoria Orchestra. WEAf wcky whas wenr wwj wtam (on 6:05)
—Raising Junior: domestic skit. WJZ wgar wjr kyw
6:30—Hotel Bossert Orchestra. WABC wbbm wwva wpsd wchd wadl wlap
—Skippy, children's program. (NBC) wenr
—Peter van Steeden Orchestra. WJZ kdka wenr
—Little Buster's Circus Parade. (NBC) kdka wenr wgar
6:30—George Hall's Hotel Taft Orchestra. WABC wbbm wwva wpsd wchd wadl wlap
—Rex Cole Mountaineers: hill-billy music. WEAf
—Jergens: Ray Perkins, the Old Topper. WJZ wlv kdka wmaq wgar
6:45—Connie Boswell, songs. WABC wcco wbbm wwva wpsd wchd wadl wlap
—"The Negro in Literature," Irvin S. Cobb. WEAf wenr
—Sylvia Froos, song recital. WJZ kdka
7:00—The Political Situation in Washington Tonight. WABC wbbm wwva wpsd wchd wadl wlap
—Nick Lucas, songs. WEAf wsaai wenr wwj
—Amos 'n' Andy. WJZ wlv kdka wgar wjr wcky
7:15—Cremo: Bing Crosby. WABC wbbm wwva wpsd wchd wadl wlap
—Laws that Safeguard Society: "Marriage During Life of Former Spouse." WEAf wsaai wenr wapi
—Tastyest Jesters, vocal trio. WJZ wcky kdka wgar
7:30—Reis and Dunn, comedy and songs. WABC wcco wbbm wwva wpsd wchd wadl wlap
—Prince Albert Quarter Hour: Alice Joy with orchestra. WEAf wsaai wenr wwj
—Sonata Recital: Mathilde Harding, pianist; Arcadie Birkenholz, violinist. WJZ wgar wapi

WFBE (250m.—1200 kc.)

7:00 A. M.—Break of Day
7:15—Musical Clock
8:15—Birthday Party
8:30—Morning Concert
9:00—Our Daily Thought
9:15—Song Birds
9:30—College Tunes
9:45—Ray Richardson, ballads
10:05—Dot: Bright Saying Program
10:20—Julius Monk, piano
10:35—WFBE-RKO Theatre Party
10:50—Studio
11:00—Happiness Club
11:15—Morning Serenade
11:30—Housewives' Frolic
11:45—Dry Ridge Health Hints
Noon—Around the Town with Frank and Larry
12:30 P. M.—Max Fisher's Californians
12:45—Fay and Cleo
1:00—Sara Drucker
1:15—Story Telling Time
1:30—Day Dreams
1:45—Chas. Daunt, tenor
2:00—Miniature Concert
2:30—Harvey Harding
2:45—Frank Brandstetter, piano
3:00—Prof. Briol, French lessons
3:15—Forgetmenots
3:45—Studio
4:00—Male Quartet
4:15—Afternoon Dance Melodies
4:30—Studio
4:45—Paul Whiteman's Music
5:00—Central Vine Street Business Men
5:15—The Pirates' Club
5:30—Musical Appreciation for Children by Lucille Jenkins
5:45—Murdoch Williams, piano and voice
6:00—Moods in Blue
6:15—Studio
6:30—Sonada Sports Forecaster
6:35—Variety
6:45—Max Fisher's Orchestra
7:15—Post Question Box
7:30—Sports Review, Harry Hartman
7:35—Bag and Baggage
7:45—Studio
8:30—Bill Holland's Melodians, La Vista
8:45—Evening Stars
9:00—Lucky Boys
9:15—Nethers' Orchestra
9:45—Hy C. Geis
10:00—Max Fisher's Californians from Club Chatter Box
10:30—Bilsimar Trio
11:00—Bill Holland's Melodians, La Vista

NETWORK PROGRAMS

7:45—Camel Quarter Hour: Morton Downey, Tony Wons and orchestra. WABC wbbm wwva wpsd wchd wadl wlap
—Lucky Strike Dance Hour, with Walter Winchell. WEAf wsaai wenr wwj
—The Goldbergs. WEAf wsaai wtam wgy wenr wwj
—Hollywood Nights: tenor with orchestra. WJZ wcky wmaq kdka wjr wgar
8:00—Colonel Stoopnagle and Budd. WABC wbbm wwva wpsd wchd wadl wlap
—Civic Concerts Service Program. WEAf wmaq wwj
—Danger Fighters, dramatic sketch. WJZ whas kdka wls kstp wcky
8:15—Sterling: Abe Lyman's Orchestra. WABC wbbm wwva wpsd wchd wadl wlap
—Hoosier Editor, Frederick Landis. WABC wcco wbbm wwva wpsd wchd wadl wlap
—National Advisory Council on Radio in Education. WEAf wsaai whas wtam kyw kstp wwj
—Dance With Countess D'Orsay. WJZ wlv wmaq kdka wjr wgar
8:45—Vaughn de Leath, songs. WABC wbbm wwva wpsd wchd wadl wlap
—Carborundum Hour: Indian Legend. WABC wgn wchd wadl wlap
—Arthur Pryor and Orchestra, Revelers' Quartet. WEAf wsaai whas wtam wgy kyw kstp wwj
—Chicago Civic Opera. WJZ wcky wgar wls
9:30—Smith Brothers, "Trade" and "Mark." WABC wbbm wwva wpsd wchd wadl wlap
—Club Valspar: Harold Embury with Orchestra. WEAf wsaai wgy wtam wwj wmaq
—The First Nighter: "Fisherman's Luck." WJZ wlv kdka kyw wjr wgar
9:45—Four Clubmen with Irene Beasley, male quartet and contralto. WABC wcco wbbm wwva wpsd wchd wadl wlap

WKRC (545m.—550 kc.)

6:45 A. M.—Sunrise Worship
7:45—Gladys Catron, organist
8:00—Hamilton Business Hour
8:15—Hodges Brothers, mountain songs
8:30—Pyol: The Sizzlers
8:45—Studio
9:00—Jean West, shopping talk
9:15—Prosperity Special Group
9:30—Consolidated Merchants' Program
10:00—Weather; Lange Time
10:03—Woman's Hour: Tremlette Tully
10:30—Adventures of Helen and Mary (CBS)
10:45—Hub Clothing Co. Musicale
11:00—Julia Hayes Household Hints
11:30—Studio
11:45—Talk by Alfred Sloan (CBS)
Noon—S. C. Johnson and Son
12:05 P. M.—Skip and Step
12:20—Studio
12:30—Cincinnati Merchants' Program
1:00—Farm Network Program (CBS)
2:00—Funny Boners (CBS)
2:15—Saturday Syncopators (CBS)
2:30—National Democratic Club Forum (CBS)
3:00—Four Clubmen (CBS)
3:30—Rhythm Kings (CBS)
4:00—Ann Leaf at the Organ (CBS)
4:30—Cincinnati Trade School: Piano
4:45—Steinberg Program
5:00—Eddie Duchin's Orchestra (CBS)
5:30—Breath 'em: Witching Hour (CBS)
5:45—Lucky Kids (CBS)
6:00—Pat Gillick, organ
6:15—Sports Review: Stocks; Studio
6:30—George Hall's Orchestra (CBS)
6:45—A. O. Rust: Happy Feet
6:50—Studio; Lange Time (6:59)
7:00—Washington Political Situation (CBS)
7:15—Cremo—Bing Crosby (CBS)
7:30—Spanish War Veterans
7:45—Camel Quarter Hour: Morton Downey, Tony Wons (CBS)
8:00—Colonel Stoopnagle and Budd (CBS)
8:15—Sterling: Abe Lyman Orch. (CBS)
8:30—Horseshoe Gardens, Cliff Burns
9:00—Junior Chamber of Commerce
9:30—Hotel Alms: Ed Kling Orchestra
10:00—Chicago Variety Show (CBS)
10:30—Chesterfield: Alex Gray, Nat Shilkret Orchestra (CBS)
10:45—Fuller Auto Program
10:52—Jack Miller Orchestra (CBS)
11:11—Alms Grill: Ed. Kling Music
11:15—Don Redman's Orchestra
11:30—Memories
11:45—Enric Madriguera's Orch. (CBS)
Midnight—Guy Lombardo Orch. (CBS)
12:30 A. M.—St. Moritz Orchestra (CBS)

NETWORK PROGRAMS

10:00—National Radio Forum. WABC wbbm wwva wpsd wchd wadl wlap
—Lucky Strike Dance Hour, with Walter Winchell. WEAf wsaai wenr wwj
—Listerine: Russ Columbo and his Orchestra. WJZ wcky wmaq wjr wgar
10:15—Chicago Variety Program. WABC wcco wbbm wwva wpsd wchd wadl wlap
—Cuckoo: Burlesque Skit. WJZ wcky wmaq wjr wgar
10:30—Chesterfield: Alexander Gray, Nat Shilkret Orchestra. WABC wbbm wwva wpsd wchd wadl wlap
—Clara, Lu and Em, gossip. WJZ wcky kdka wjr wgar wgn
10:45—Jack Miller and his Orchestra. WABC wcco wbbm wwva wpsd wchd wadl wlap
—Twenty Fingers of Harmony, piano and organ. WJZ kdka wjr
11:00—Don Redman's Connie's Inn Orchestra. WABC wbbm wwva wpsd wchd wadl wlap
—Cremo: Bing Crosby. (CBS) wgn wcco wbbm wwva wpsd wchd wadl wlap
—Marion Harris, songs. WEAf wtam wwj
—Slumber Music, string ensemble. WJZ wjr (wmaq wcky on 11:15)
—Amos 'n' Andy. (NBC) whas wls wmaq kstp
11:15—Jesse Crawford, organ. WEAf
—Prince Albert Quarter-Hour: Alice Joy, with orchestra. (NBC) whas
11:30—Enric Madriguera's Orch. WABC
—Camel Quarter-Hour: Morton Downey, Tony Wons, orchestra. (CBS) wgn
—Rudy Vallee and Connecticut Yankees. WEAf wcky wtam wgy wwj
—Tito Coral, South American singer. WJZ wgar
11:45—Enric Madriguera's Orchestra. WABC wbbm wwva wpsd wchd wadl wlap
—Lew White, organ. WJZ wenr
Midnight—Guy Lombardo's Canadians. WABC wbbm wwva wpsd wchd wadl wlap
—Ralph Kirbery, tenor. WEAf wtam wgy
—Piano Moods: Lee Sims, piano; Ilo May Bailey, songs. WJZ wgar wjr

WCKY (202m.—1490kc.)

7:00 A. M.—Morning Melodies
7:30—Asher Sizemore and Little Jimmy
7:45—Kapua's Hawaiians
8:00—Organ Eye-Openers
8:15—Morning Devotions (NBC)
8:30—Cheerio (NBC)
9:00—Waltzes, Old and New
9:30—Band Music
9:45—Tunes in Blue
10:00—Willie's Music School of the Air
10:45—Classic Hour
11:15—Musical Novelties
11:30—Cumberland Crooners
Noon—Tuneful Topics
12:15 P. M.—Johnson Wax Program
12:20—Musical Interlude
12:25—Live Stock Quotations
12:30—National Farm and Home (NBC)
1:30—Piano Novelties
2:00—Dance Tunes
2:15—Moods Indigo
2:30—Children's Hour
3:00—Siesta Musicale
3:15—Matinee Melodies
3:45—Hawaiian Reveries
4:00—This an' That
4:15—Stars of Today
4:30—Saturday Matinee (NBC)
5:00—"Snow" Drifts, Jack Snow
5:15—Asher Sizemore and Little Jimmy
5:30—Story Book Hour
5:45—Cincinnati Automobile Show
6:00—Waldorf-Astoria Orchestra (NBC)
6:30—Late Dance Tunes; News
7:00—Amos 'n' Andy (NBC)
7:15—Tastyest Jesters (NBC)
7:30—Showboat Boys, quartet
7:45—Hollywood Nights (NBC)
8:00—Danger Fighters (NBC)
8:30—"It Pays to Advertise"
9:00—Chicago Civic Opera (NBC)
9:30—Tommy Thomas Music, Club Royal
10:00—Listerine: Russ Columbo (NBC)
10:15—Cuckoo (NBC)
10:30—Clara, Lu and Em (NBC)
10:45—Les, Bud and Joe, and Lena Pope
11:00—Coca Cola
11:15—Slumber Music (NBC)
11:30—Rudy Vallee's Connecticut Yankees (NBC)

WLW (428m.—700 kc.)

6:30 A. M.—International Fiddlers
7:00—Physical Exercises
7:15—Talent Bureau Program
7:30—Arthur Chandler, Jr., organ
7:45—Ford Rush
8:00—Morning Devotions
8:15—Phil Cook, Quaker Man (NBC)
8:30—Talent Bureau Program
8:45—Physical Exercises
9:00—Thoughts of Youth
9:10—Sam Wilson, baritone; Arthur Chandler, Jr., organist
9:20—Book News
9:30—Beautiful Thoughts (NBC)
9:45—WLW Mail Bag
10:00—Live Stock Reports
10:10—Maltine Announcements
10:15—A. & P. Orchestra
10:30—Colonel Goodbody (NBC)
10:45—Talent Bureau Program
11:00—Organ, Arthur Chandler, Jr.
11:15—Elliot Brock, violin
11:30—Live Stock: River: Weather
11:55—Time Signals
Noon—Governmental Glimpses, Gilbert Bettman, Ohio Attorney General
12:15 P. M.—Pat Barnes in Person (NBC)
12:30—Gibson Orchestra: Kay Kayser
12:45—National Farm and Home (NBC)
1:31—Henry Busse Orchestra
2:00—Organ Matinee
2:30—Talent Bureau Program
2:45—Sisters Three
3:00—Pat Harrington, tenor
3:15—Plantation Days
3:30—Seckatary Hawkins
4:00—A. & P. Orchestra
4:30—The Chatter
4:45—Crosley Dealers' Hour
5:15—"America at Work" (NBC)
5:45—Little Orphan Annie (NBC)
6:00—Old Man Sunshine
6:15—Netherlands Orchestra: Henry Busse
6:30—Jergens: Ray Perkins (NBC)
6:45—Taking the Mist Out of Chemistry: "The Manufacture of Explosives"
7:00—Amos 'n' Andy (NBC)
7:15—Kay Kayser's Orchestra
7:30—Crosley Theatre of the Air
8:00—Henry Busse's Orchestra
8:15—Oldsmobile Melody Speedway
8:30—Dance with Countess Dorsay (NBC)
9:00—King Edward Cigar Band
9:30—The First Nighter (NBC)
10:00—Greystone: Cherniavsky Orchestra
10:15—Arzen Serenaders with Ramona
10:30—Henry Busse Orchestra
10:45—Bob Newhall Sports Slices
11:00—Van Camp Night Caps
11:30—Doodlesocks with Syd Ten Eyck
Midnight—Greystone: Cherniavsky Orchestra
12:30—Netherlands Orchestra: Henry Busse
1:00—Gibson Orchestra, Kay Kayser

LETTER BOX

(Continued from page 5)

mountain time which is 12:45 a. m. eastern time.

Charles G. Roth, Avondale: There's no hoax about these broadcast stunts like the Lucky Strike and Oldsmobile programs. They're terrifically expensive to broadcast because so many telephone wires have to be hired to carry the portions of the programs to NBC headquarters in New York from which they are redistributed by telephone lines to network stations all over the country. Paul Whiteman, in Chicago, actually accompanied Bebe Daniels, in Hollywood, although Miss Daniels didn't listen to him because the sixth of a second it took for his music to get to her earphones confused her. She sang with an accompanist. Whiteman and his men were hearing it a sixth of a second later through earphones; Whiteman took up the beat from her singing and went on with the accompaniment. He says he knew it could be done because he tried it out by accompanying a singer in the next room. A couple of thousand miles meant no more to Whiteman than one room. For that program there were telephone lines from Chicago to New York to San Francisco, from San Francisco to New York, and from New York to all outlet cities, like Cincinnati. Winchell really says "Hello, Montreal!"

NETWORK PROGRAMS

12:05 A. M.—Coon-Sanders Orch. WEAf (wtam on 12:30)
12:15—Charlie Agnew's Edgewater Beach Hotel Orchestra. WJZ wgar wjr kyw
12:30—Harold Stern's Orchestra. WABC wkrk wpsd wlap
1:00—Noble Sissle's Orchestra. WABC
1:30—Dave Abrams' Barn Orchestra. WABC

as a cue to the orchestra leader and control engineers in the next city to take over the program and go on the air. Short waves take Winchell's voice to Europe as a signal, and bring the foreign orchestra music to America. It's thrilling, isn't it? And you can be assured that there's no faking in radio. Gertrude Berg plays Mollie Goldberg and writes the sketches. We'll get the other names for you.

THE RADIO LISTENERS' PRAYER

Lord, we thank Thee for the Radio, Equipped with a little dial To protect us against the Romeo Who sings and talks things vile.

High-pressure salesmanship and jazz Would monopolize the air It it were not for the little knob That prompts us to beware.

Good music and true Theology Will always have attention. Again we thank Thee for Radio With that turning knob invention.

Pro bono publico, Albert Jacobson, Walnut Hills.

Mrs. Mary Blair Klein, Mt. Lookout, Cincinnati: Tommie and Willie at WCKY, say they will announce your birthday at 6:30 p. m. Wednesday, January 27.

Anna Lausch, Wellston, O.: The next Teachers' Forum of the Ohio School of the Air is booked for 3:30 (Continued on page 12)

BETTER RECEPTION OR YOUR MONEY BACK

For your Home For your Auto

Thousands of set owners have improved their radio reception with

Effarsee
ANTENNAE
TRADE MARK
PATENT

Radio's most powerful and most selective inside aerial. Variety of sizes from

\$1.00 to \$5.00

FISHWICK RADIO
226 E. 8th St., Parkway 0681

LESTER SINGER RADIO SERVICE CO.

Cincinnati's Best Equipped Radio Service Station

All Makes of Radios Serviced

Power Packs and Sound Equipment

2032 Madison Road
Cincinnati, O. WOodburn 3788

CALL KIRBY 4435

For

RADIO REPAIRING

A Radio Technician equipped to repair your radio efficiently.

"Your satisfaction is our first consideration"

LESTER YOUNG RADIO SERVICE CO.

MONEY Boys: Sell RADIO DIAL

A little of your time and effort will pay good profits. Here's an easy way to have an income of your own. Show them the kind of salesman you are.

J. Louis Motz News Co.
918 E. Court St., Cincinnati, Ohio
Phone CHerry 3205

COMPLETE PROGRAMS FOR SUNDAY, JANUARY 24, ON THIS PAGE

WSAI (225m.—1330 kc.)

2:15 P. M.—Sunday Bright Spot (NBC)
 2:30—Sermonette and Hymn Time
 3:00—Lady Esther: Wayne King's Orchestra (NBC)
 3:30—National Religious Services (NBC)
 4:00—American Colony Life in Berlin (NBC)
 4:30—Davey Tree Experts (NBC)
 5:30—General Electric Program (NBC)
 6:00—Catholic Hour (NBC)
 6:30—"Our American Schools" (NBC)
 7:00—Los Pamperos (NBC)
 7:15—Songsters (NBC)
 7:30—Jodent Club of the Air (NBC)
 8:00—Chase & Sanborn: Eddie Cantor, Jimmy Wallington, Rubinoff (NBC)
 9:00—"Our Government"—David Lawrence (NBC)
 9:15—American Album of Familiar Music (NBC)
 9:45—The Buick Revelers (NBC)
 10:15—Henry Busse's Orchestra
 10:45—Sunday Night at Seth Parker's (NBC)

Network Programs

Noon—Voice of St. Louis, WABC wcco wspd kmox wlap wadc
 —Major Bowes Capitol Family (on 11:30). WFAF wlas wlam wgy wvj
 —Morning Musicale (on 11:30). WJZ wlv (kdka on 12:15)
 12:30 P. M.—International Broadcast: Prime Ministers of Denmark, Norway, Sweden. WABC wcco whk wspd wwa wcah wlap wadc
 —Tales of the Emerald Isle, dramatized legends. WFAF wlam wgy wvj
 —Balkan Mountain Men, vocalists, orchestra. WJZ wcky whas (kdka on 12:45) wgar
 12:45—Street Singer. WABC wcco wspd wwa wcah wlap wadc
 1:00—Cathedral Hour, choir and soloists. WABC wcco kmox wwa wlap wadc
 —Troika Bells, balalaika orchestra and soprano. WFAF wvj
 —Sentinels of the Republic, talk. WJZ kdka wjr kstp
 1:15—NBC Symphonic Hour: Walter Damrosch, conductor. WJZ wlv whas wmaq (kdka off 2:00) wjr wgar kstp
 1:30—Silver Flute, gypsy tales. WFAF wgy wvj
 1:45—Venida Program: Wee Willie Robyn, Emery Deutsch Gypsies. WABC wkrc wbbm whk kmox
 —Old Company's Program: American Singers, orchestra. WFAF wgy
 —Pop Concert: Walter Logan, conductor. (NBC) wlam wcky wvj
 2:00—Pastorale: mixed quartet, orchestra. WABC wkrc wbbm wovo whk kmox wwa wcah wlap wadc wcco
 2:15—Sunday Bright Spot, male trio, orchestra. WFAF wsaí wlam wgy kstp wvj whas kyw
 —Careless Love, Negro dramatic sketch. WJZ wcky wgar
 2:30—Columbia Church of the Air: WABC wkrc wcco wbbm wwa wlap wadc wcco
 —Moonshine and Honeysuckle, dramatic sketch. WFAF wlam wgy wmaq wvj wcky
 —Yeast Foamers, tenor and orchestra. WJZ wlv whas kdka kyw wjr wgar
 3:00—New York Philharmonic Orchestra. WABC wkrc wcco wbbm wwa wlap wadc wcco
 —Wayne King and his Orchestra. WFAF wlam kyw
 —National Youth Conference, Dr. Daniel A. Poling. WJZ wcky wmaq wgar
 3:30—Dr. S. Parkes Cadman, address; choir, orchestra. WFAF wsaí wlam wgy kstp wvj kyw whas
 —Waldorf-Astoria Organ Recital, Karl Bonawitz. WJZ wmaq
 4:00—"American Colony Life in Berlin." (Rebroadcast from Germany.) WFAF wsaí wlam wgy wvj wmaq whas
 —Travelogue: Malcolm La Prade. WJZ kdka kyw
 4:15—"Wandering Around Little Ol' Broadway." WJZ
 4:30—Davey Hour: Soloists and organ. WFAF wsaí wlam wgy wvj
 —The Musical Showmen, quartet and orchestra. WJZ wmaq kdka
 5:00—Real Folks, rural sketch. WABC wkrc wbbm wovo wcco whk wspd wadc
 —National Vespers: Dr. Harry Emerson Fosdick. WJZ wcky wmaq kstp wgar

Get "Coast to Coast"

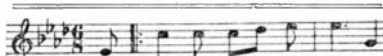
or NO COST
 Volotone, a new All Wave Tuner, brings in dozens of distant stations with doubled volume and clarity.
 Easily attached. Write Imperial Lab., 8943 Coke Bldg., Kansas City, Mo., for introductory Free Trial Offer.

WFBE (250m.—1200 kc.)

8:00 A. M.—Break of Day
 8:30—Concert Hour
 9:15—Birthday Party Program
 9:30—Invitation to the Waltz
 10:15—Dry Ridge Health Hints
 10:30—Vocal Varieties
 11:00—Excerpts from the Operas
 11:30—Our Thought for Today
 11:45—Morning Melodies
 Noon—Galvano and Cortez
 12:30 P. M.—UFA Theatre
 12:45—Little Concert
 1:00—Jewish Hour with Speaker
 1:15—Mrs. Hahn and Baillie Houliston
 1:30—Forgetmenots, music
 2:00—James A. Dorsey
 2:15—Beyond the Horizon
 2:30—Bill Reith's Cincinnati Panthers
 3:00—Mystery Melody Maker
 3:30—Studio
 3:45—Progressive Glee Club
 4:00—Studio
 4:15—Musical Moment
 4:30—Tea Music
 4:45—Post Symphony Hour
 5:45—Tom and Jerry
 6:00—Twilight Reveries
 6:30—Church Federation Hour
 7:00—Emma Methvin, songs
 7:15—With the Scouts
 7:30—Sports Review
 7:45—Jewell Litz and Mildred Prigge
 8:00—Max Fisher's Orchestra from Hotel Sinton
 8:45—Studio
 9:00—Eve Star: Henry Grad, baritone
 9:15—Dixie Trio; Elsie Doyle, soloist
 9:45—Hy C. Geis, organ recital
 10:00—Bill Holland's Melodians, La Vista
 10:15—Nocturne
 10:30—Bill Holland's Melodians, La Vista

NETWORK PROGRAMS

5:30—Blue Coal Radio Revue. WABC
 —Brooks and Ross, songs. (CBS) wbbm wwa wcah wlap
 —General Electric Home Circle: Dusolina Giannini, soprano, guest artist. WFAF wsaí wlam wgy wvj
 —Simoniz Guardsmen, tenor and orchestra. WJZ wlv kyw wgar wmaq
 5:45—Hook, Line and Sinkers. (CBS) wbbm wwa wcah wlap
 6:00—Grand Opera. WABC
 —Chicago Knights. (CBS) wbbm wcco wwa wlap wkrc
 —Catholic Hour: Rev. Dr. Joseph A. Daly. WFAF wsaí wlam wgy wvj
 —Raising Junior: domestic skit. WJZ kyw wjr wgar
 6:15—Veronica Wiggins, song recital. WJZ wjr wcky
 6:30—Quiet Harmonies: Emery Deutsch, conductor. WABC
 —Barnsdall Musical Memories, baritone, Melodians, orchestra. (CBS) wgn wcco wspd kmox
 —"Our American Schools." WFAF wsaí wlam wgy
 —The Cosmopolitans, string ensemble. WJZ
 7:00—The World's Business: Dr. Julius Klein. WABC wkrc wcco wbbm kmox wadc wlap
 —Los Pamperos, soprano, guitar ensemble. WFAF wsaí
 —Willys-Overland Orchestra, vocal trio, piano duo, orchestra. WJZ wcky kdka kyw kstp wjr wgar
 7:15—The Sylvanians: quartet and orchestra. WABC wkrc wgn wcco kmox
 —The Songsters, male quartet. WFAF wsaí
 —Levitski and Sciarretti, piano duo. WJZ wls
 7:30—Luden's Novelty Orchestra. WABC wkrc wgn wcco wbbm whk kmox
 —Jodent Club: Dramatic Sketch. WFAF wsaí wlam wgy wls wvj
 —The Three Bakers: trio and orchestra. WJZ wlv whas kdka kyw kstp wjr wgar
 8:00—The Metropolitans, male quartet and orchestra. WABC wkrc wgn wcco wbbm whk wspd kmox wadc
 —Chase and Sanborn Hour, Eddie Cantor, guest artist; Rubinoff's Orchestra. WFAF wsaí wlam wgy wls wvj whas (kstp on 8:30)
 —Enna Jettick Melodies: mixed quartet, orchestra. WJZ wlv whas kdka kyw wjr wgar kstp
 8:15—Fisk University Chorus, spirituals. WABC wcco wbbm wspd kmox wwa wcah wlap wadc



TUNE IN THE NEW!

CRANE & BREED

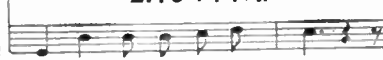
Wings of Song

A SUNDAY CLASSIC

Station WKRC

SUNDAY JAN. 24

2:15 P. M.



WKRC (545m.—550 kc.)

6:45 A. M.—Sunrise Worship
 9:00—God's Bible School
 10:00—Watchtower Program
 10:15—Jim Lightfield's Veteran Civic Hour
 Noon—American Legion Program
 1:00 P. M.—Jewish Community Program
 1:30—Monarch Supply: Happy Repairmen
 1:45—Venida: Wee Willie Robyn (CBS)
 2:00—Pastorale (CBS)
 2:15—Crane & Breed: On Wings of Song
 2:30—Columbia Church of the Air (CBS)
 3:00—New York Philharmonic Symphony Orchestra (CBS)
 5:00—Log Cabin: Real Folks (CBS)
 5:30—Xavier: Twenty Minutes of Good Reading
 6:00—Chicago Knights (CBS)
 6:15—Sports Review; Studio; Lange Time
 6:45—Studio
 7:00—The World's Business, Dr. Julius Klein (CBS)
 7:15—The Sylvanians (CBS)
 7:30—Luden's Novelty Orchestra (CBS)
 7:45—To be announced
 8:00—The Metropolitans (CBS)
 8:15—Alms & Doepeke: Martha Witkowska, contralto; Harold Krell, organ
 8:45—Angelo Patri—"Your Child" (CBS)
 9:00—Cliff Burns Orchestra
 9:30—Adventures with Count Von Luckner (CBS)
 10:00—Edna Wallace Hopper Show (CBS)
 10:30—Hotel Alms: Ed Kling Orchestra
 11:00—Time; Weather; Sports Review
 11:15—The Gauchos (CBS)
 11:30—California Melodies (CBS)
 Midnight—Eddie Duchin's Orch. (CBS)

NETWORK PROGRAMS

—Collier's Radio Hour. WJZ wlv kdka kyw wjr wgar
 8:45—Angelo Patri, "Your Child." WABC wkrc wgn wovo wcco whk wspd kmox wadc
 9:00—Roxy Theater Orchestra: Maurice. WABC wcco kmox wcah
 —"Our Government." David Lawrence. WFAF wsaí wgy wvj
 9:15—American Album of Familiar Music: male quartet, soloists, orchestra. WFAF wsaí whas wlam wgy wvj
 —Bayuk Stag Party: male quartet, orchestra. WJZ wlv kdka kyw wjr wgar
 9:30—Adventuring with Count von Luckner. WABC wkrc wgn wovo whk wspd kmox wadc
 9:45—Buick Revellers: Countess Olga Albani, soprano; Revelers quartet; Frank Black Orchestra. WFAF wsaí whas wlam wgy wvj
 —Kellogg Slumber Music: string ensemble. WJZ wlv kdka kyw wjr
 10:00—Edna Wallace Hopper Variety Show: Stage and Screen Stars; orchestra. WABC wkrc wbbm wovo wcco wbbm whk wspd kmox wadc wlap
 10:15—National Oratorio Society: "Gallia," "Fair Ellen;" Reinald Werrenrath, director. WFAF wsaí wlam wgy whas
 —Barbasol: The Old Singing Master. WJZ wlv kdka wmaq

WCKY (202m.—1490kc.)

Noon—Major Bowes' Capitol Family (NBC)
 12:30—Balkar. Mountain Men (NBC)
 1:00—Wurlitzer Program
 1:15—New Era Program
 1:30—Worthmore Soup Program
 1:45—Cleveland Pop Concerts (NBC)
 2:15—Careless Love (NBC)
 2:30—Moonshine and Honeysuckle (NBC)
 3:00—National Youth Conference (NBC)
 3:30—Waldorf-Astoria Organ Concert (NBC)
 4:00—Familiar Hymns sung by Alma Ashcraft and Grady Hodges
 4:15—Lawson's Hawaiians
 4:45—Charlene
 5:00—Dr. Harry Emerson Fosdick (NBC)
 5:30—Maurice Thompson, baritone, and Faye Tarvin, pianist
 5:45—Radio and Television Institute
 6:00—Coca Cola Program
 6:15—Veronica Wiggins (NBC)
 6:30—Cosmopolitans (NBC)
 7:00—Willys Overland Program (NBC)
 7:15—Morgan Eliot, baritone
 7:30—College of Music Concert
 8:00—Chico 'n' Peppina
 8:15—Nightingale Quartet
 8:30—"It Pays to Advertise"
 9:00—Sundodgers
 9:30—Tommy Thomas Music, Club Royal
 10:00—Soldiers of Fortune
 10:30—Tommy Thomas Music, Club Royal
 10:45—Thrillers (NBC)
 11:15—Sylvia Froos (NBC)
 11:30—Jesse Crawford (NBC)
 Midnight—Off

NETWORK PROGRAMS

10:30—Ernest Hutcheson, piano; Howard Barlow Concert Orchestra. WABC wbbm wspd wcah wadc wlap
 10:45—Sunday at Seth Parker's. WFAF wsaí kyw wgy kstp
 —Thrillers. WJZ wcky kdka wvj wgar
 11:00—The Gauchos: Tito Guizar, Hernandez Brothers, Vincent Sorey Orchestra. WABC wbbm whk wspd kmox wcah wadc wlap
 11:15—Ralph Kirbery, songs. WFAF wgy wvj
 —Sylvia Froos, songs. WJZ wvj wjr wgar wcky
 11:30—California Melodies. WABC wkrc wcco wbbm whk wcah wadc wlap
 —Jesse Crawford, organ. WFAF wgy wvj wvj wvj
 —David Novalis, violinist; Henrietta Schumann, pianist. WJZ wcky wjr wvj wvj
 11:45—Sannella and Herman, saxophone and xylophone. WJZ wcky wjr wgar kdka
 Midnight—Eddie Duchin Orchestra. WABC wkrc wcco wspd wlap
 —Larry Funk's Orchestra. WFAF wsaí (off 12:30) wlam (on 12:30)
 —Henry Theis Orchestra. WJZ wlv wvj wvj
 12:30 A. M.—Nocturne: Ann Leaf, organ. WABC wcco wspd wlap

WLW (428m.—700 kc.)

9:00 A. M.—Church Forum
 9:30—Children's Hour (NBC)
 10:00—Organ: Arthur Chandler, Jr.
 10:25—River Report
 10:30—Fiddlers Three (NBC)
 10:45—Song for Today (NBC)
 11:00—Russian Singers (NBC)
 11:30—Morning Musicale (NBC)
 12:30 P. M.—Varsity Quartet
 12:45—Sunday Serenade: Stoess Orchestra, singers
 1:15—Damrosch Symphony (NBC)
 2:15—College of Music
 2:30—Yeast Foamers Orchestra (NBC)
 3:00—Crosley Theatre of the Air
 3:30—Crosley Roamios, orchestra
 4:00—League of Little Flower (WJR)
 5:00—Dr. Barnhouse
 5:30—Simoniz Program (NBC)
 6:00—Shuron Musical Showman
 6:30—Silhouettes
 7:00—Netherland Orchestra: Henry Busse
 7:30—Three Bakers (NBC)
 8:00—Enna Jettick Melodies (NBC)
 8:15—Collier's Radio Hour (NBC)
 9:15—Bayuk Stag Party (NBC)
 9:45—Kaffee Hag Slumber Music (NBC)
 10:15—The Old Singing Master (NBC)
 10:45—Seger Ellis and Orchestra
 11:00—Greystone: Cherniavsky Orchestra
 11:30—Moon River, vocal, instrumental
 Midnight—Henry Theis' Orchestra
 1:00—Netherland Orchestra: Henry Busse

Who is Sylvia?



Madame Sylvia

This is Mme. Sylvia, whose expert care has kept many a movie actress beautiful beyond her time, and who is now telling radio listeners her secrets in the General Electric Home Circle programs at noon on Fridays through WSAI and NBC-WFAF stations.

SAFETY

—the Underlying Factor In

BUILDING and LOAN

SAFETY is the first consideration in deciding upon a plan for savings out of your earnings.

SAFETY for your principal—for every hard-earned dollar you lay aside should be uppermost in your thought.

When the beginning of a fund or fortune is small it is doubly necessary to safeguard your principal.

You can't afford to risk your money in anything *anywhere*, no matter what profit is promised, if you cannot be sure of its safety.

The outstanding feature of Building and Loan Investment is its SAFETY. No subscriber has ever lost a dollar of his savings in a Building and Loan Association in Hamilton County during the past decade.

Nor has there been a depreciation in the principal investment in the Building and Loans under Ohio's present laws.

The past is an assurance of the present and the future . . . your savings are safe in the B. and L.



This Declaration is Sponsored by

HAMILTON COUNTY LEAGUE of BUILDING AND LOAN ASSOCIATIONS

Composed of over 200 Associations — Banded Together for the Promotion of the Welfare of the Shareholders of Building and Loan Organizations Everywhere.

Phone Geo. W. Meier, Secretary, CHerry 2540
For Any Information Desired.

COMPLETE PROGRAMS FOR MONDAY, JANUARY 25, ON THIS PAGE

WSAI (225m.—1330 kc.)

8:00 A.M.—Gene and Glenn (NBC)
 8:15—McCormick's Fiddlers
 8:45—WSAI Morning Dance Concert
 9:15—Odas Maddox, guitar
 9:30—Popular Musicale
 10:00—M. S. Blake's Radio Column (NBC)
 10:15—Musical Tid Bits
 10:45—Organ Program
 11:00—McCormick's Old Time Fiddlers
 11:30—Dance Selections
 Noon to 12:15—G. E. Home Circle (NBC)
 12:50 P. M. to 1:00—Live Stock Reports
 3:00—Woman's Radio Review (NBC)
 4:00—WSAI Classical Hour
 4:15—Crosley Dealers' Salute
 4:30—Concert Program
 4:45—Minnabelle and Chick
 5:00—Crosley Singers
 5:15—Skippy (NBC)
 5:30—Celebrated Compositions
 5:45—Listerine: Russ Columbo (NBC)
 6:00—Memory Hour
 6:30—Everyday Poems by George Elliston
 6:45—Stebbins Boys (NBC)
 7:00—Vermont Lumberjacks (NBC)
 7:15—Campbell Soup Orchestra (NBC)
 7:30—Prince Albert Program (NBC)
 7:45—Trials of the Goldbergs (NBC)
 8:00—Gibson Orchestra: Kay Kayser
 8:30—Voice of Firestone, with Lawrence Tibbett (NBC)
 9:00—A. & P. Dance Gypsies (NBC)
 9:30—General Motors Parade (NBC)
 10:00—New National Radio Forum (NBC)
 10:30—Mr. Bones and Company (NBC)
 11:00—Netherlands Orchestra: Henry Busse

WFBE (250m.—1200 kc.)

7:00 A.M.—Break of Day
 7:15—Musical Clock
 8:15—Birthday Party
 8:30—Morning Concert
 9:00—Our Daily Thought
 9:15—Hy C. Geis, organ
 9:45—Ray Richardson, guitar
 10:05—Dot: Bright Saying Program
 10:20—Studio
 10:35—WFBE-RKO Theatre Party
 10:50—Mrs. Evans, advice
 11:00—Mary and John
 11:15—Morning Serenade
 11:30—Housewives' Frolic
 11:45—Dry Ridge Health Hints
 Noon—Around the Town with Frank and Larry
 12:30 P. M.—How It Began
 12:45—Luncheon Musicale
 1:00—Good Afternoon Melodies
 1:15—Story Telling Time
 1:30—Slumber Songs
 1:45—Forgetmenots
 2:15—Mrs. Julian Schwab, bridge lessons
 2:30—Variety
 2:45—Elinor Hurdle, readings
 3:00—Studio
 3:15—Studio
 3:30—Marion Hemple, songs
 3:45—Memory Lane
 4:00—Voice of the Strings
 4:30—John Charles Thomas, songs
 4:45—Musical Interlude
 5:00—Central Vine Street Business Men
 5:15—The Pirates' Club
 5:30—Bee Campbell, songs
 5:45—Jules Sien
 6:00—Music Masters
 6:15—Studio
 6:30—Show Windows—Frank Aston
 6:45—Max Fisher's Orchestra
 7:00—Dinner Music
 7:15—Post Question Box
 7:30—Sports Review, Harry Hartman
 7:45—Leo Polski, concert pianist
 8:00—Mrs. Adolf Hahn and Guest
 8:15—Radio Sunbeams
 8:30—Covington and Hersh
 8:45—Studio
 9:00—Lucky Boys
 9:15—Studio
 9:30—Reveries
 9:45—Highlights of the World Series
 10:00—Max Fisher's Californians from Club Chatter Box
 10:30—Belsimar Trio

WKRC (545m.—550 kc.)

6:45 A.M.—Sunrise Worship
 7:45—Gladys Catron, Organist
 8:00—Around the Clock
 8:15—Hodges Brothers, mountain songs
 8:30—Pyol Program: The Sizzlers
 8:45—The Old Dutch Girl (CBS)
 9:00—Jean West Shopping Talk
 9:15—Prosperity Specials
 9:30—Consolidated Merchants' Program
 10:00—Weather; Lange Time Signal
 10:03—Woman's Hour—Tremlette Tully
 10:30—Queen City Rug Makers
 10:45—Madison Singers (CBS)
 11:00—Musical Alphabet: Tchaikowsky Music (CBS)
 11:15—Julia Hayes Household Hints
 11:45—Jane Grey and "Kampf, the Jeweler, Artists"
 Noon—S. C. Johnson and Son Program
 12:05 P. M.—Skip and Step
 12:22—Studio
 12:30—Cincinnati Merchants
 1:00—Farm Network Program (CBS)
 2:00—Youngbluth and Son Period
 2:15—Burck-Bauer Organ Melodies
 2:30—American School of the Air: Drama of First Peace Conference at The Hague (CBS)
 3:00—Four Eton Boys (CBS)
 3:15—Theremin Electro Ensemble (CBS)
 3:30—Salon Orchestra (CBS)
 3:45—Sam Prager, pianist (CBS)
 4:00—Cincinnati Trade School: Piano
 4:15—Bert Low's Orchestra (CBS)
 4:30—Studio
 4:45—Steinberg Program
 5:00—Buddy Wagner's Orchestra (CBS)
 5:30—Uncle Ollie Kremel Gang (CBS)
 5:45—Wrigley: Lone Wolf Tribe (CBS)
 6:00—Pat Gillick, organ
 6:15—Sports Review; Stocks
 6:25—A. O. Rust: Happy Feet
 6:30—Hall-Ratterman: Blue-Green and Hi-Sea
 6:45—Wurzberg: The German and His Parrot; Lange Time (6:59)
 7:00—Wrigley—Myrt and Marge (CBS)
 7:15—Cremo—Bing Crosby (CBS)
 7:30—Pompeian: Boswell Sisters (CBS)
 7:45—Camel Quarter Hour: Morton Downey, Tony Wons (CBS)
 8:00—Linit: The Bath Club, Mrs. Howard Chandler Christy (CBS)
 8:15—Singin' Sam, Barbasol Man (CBS)
 8:30—Kate Smith, La Palina (CBS)
 8:45—Col. Stoopnagle and Budd (CBS)
 9:00—Vapex—Mills Bros. (CBS)
 9:15—Frostilla Broadcast Rehearsal with Mildred Hunt (CBS)
 9:30—Bourjois: An Evening in Paris (CBS)
 10:00—Guy Lombardo Panatella Orchestra (CBS)
 10:30—Chesterfield: Nat Shilkret Orchestra, Alex Gray, baritone (CBS)
 10:45—Studio
 11:00—Time; Weather; Sports Review
 11:15—Toscha Seidel, violin: Vivaldi, "Concerto in A Minor" (CBS)
 11:30—Memories
 11:45—Enric Madriguera's Orch. (CBS)
 Midnight—Ben Bernie Orchestra (CBS)

WCKY (202m.—1490kc.)

7:00 A.M.—Morning Melodies
 7:30—Asher Sizemore and Little Jimmy
 7:45—White Rose Melodies
 8:00—Organ Music
 8:15—Morning Devotions (NBC)
 8:30—Cheerio (NBC)
 9:00—Waltzes, old and new
 9:30—Band Music
 9:45—Tunes in Blue
 10:00—Vocal Varieties
 10:15—Dr. Copeland (NBC)
 10:30—Classic Hour
 11:00—Mrs. A. M. Goudiss
 11:15—Musical Novelties
 11:30—Cumberland Crooners
 Noon—Luncheon Program
 12:15 P. M.—Johnson's Wax Program
 12:20—Musical Interlude
 12:25—Live Stock Quotations
 12:30—National Farm and Home (NBC)
 1:30—Organ Recital
 2:00—Kentucky Federation of Women's Clubs
 2:15—Nomads (NBC)
 2:45—Music Masters
 3:00—Siesta Musicale
 3:15—Matinee Melodies
 3:45—Kapua's Hawaiians
 4:00—Stars of Today
 4:15—Rhythm and Rhyme
 4:30—Tantalizing Tunes
 4:45—Phil Spitalny Tea Dansante (NBC)
 5:00—"Snow" Drifts
 5:15—Asher Sizemore and Little Jimmy
 5:30—Story Book Time
 5:45—Radio and Television Institute
 6:00—Tommy and Willie
 6:30—Late Dance Tunes; News
 7:00—Amos 'n' Andy (NBC)
 7:15—Tastyest Jesters (NBC)
 7:30—Jane Froman and Orchestra (NBC)
 7:45—Waves of Melody (NBC)
 8:00—Carnation Milk: Contented Program (NBC)
 8:30—Death Valley Days: "The Mysterious Stranger" (NBC)
 9:00—"It Pays to Advertise"
 10:00—Sundodgers
 10:30—Louise Ryder, contralto
 10:45—Four Aces
 11:00—Coca Cola
 11:15—Slumber Music (NBC)
 11:30—Jesse Crawford, organist (NBC)
 11:45—Mills Orchestra (NBC)

WLW (428m.—700 kc.)

6:30 A.M.—International Fiddlers
 7:00—Physical Exercises
 7:15—Bradley Kincaid
 7:30—Organ, Arthur Chandler, Jr.
 7:45—Jolly Bill and Jane (NBC)
 8:00—Morning Devotions
 8:15—Phil Cook, the Quaker Man (NBC)
 8:30—Harmonica Bill
 8:45—Physical Exercises
 9:00—Rumford School of Cookery
 9:15—Backstage in Radio
 9:20—Child Care, talk
 9:30—Beautiful Thoughts (NBC)
 9:45—Art Talk by Cherry Greve
 10:00—Live Stock Reports
 10:10—Maltese Announcements
 10:15—A. & P. Orchestra
 10:30—Colonel Goodbody (NBC)
 10:45—Talent Bureau Program
 11:00—Elliot Brock, violin recital
 11:15—Talent Bureau Program
 11:30—Rogers Musical Trio (NBC)
 11:45—River; Weather; Time
 Noon—Bradley Kincaid
 12:15 P. M.—Pat Barnes in Person (NBC)
 12:30—Gibson Orchestra, Kay Kayser
 12:45—Markets; Live Stock Reports
 1:00—National Farm and Home (NBC)
 1:30—Netherlands Orchestra: Henry Busse
 2:00—Ohio School of the Air
 3:00—U. S. Marine Band (NBC)
 4:00—A. & P. Orchestra
 4:30—Organ Matinee
 4:45—The Chatter
 5:00—WLW Singers
 5:15—Bird Talk: Dr. Glenn Adams
 5:30—The Singing Lady (NBC)
 5:45—Little Orphan Annie (NBC)
 6:00—Old Man Sunshine
 6:15—Netherlands Orchestra: Henry Busse
 6:30—Royal Vagabonds with Ward Wilson (NBC)
 6:45—Lowell Thomas, news topics (NBC)
 7:00—Amos 'n' Andy (NBC)
 7:15—Sunset Melodies
 7:30—Centerville Sketches
 7:45—Seiberling Rubber Program
 8:00—Smilin' Ed McConnell
 8:30—Netherlands Plaza Orchestra
 8:45—Sisters of the Skillet
 9:00—Armco Band
 9:30—Mary Brown and Orchestra
 9:45—Life Savers Success Reporter:
 10:00—Canada Dry: "With Canada's Mounted" (NBC)
 10:30—Seger Ellis and Orchestra
 10:45—Bob Newhall Sports Slices
 11:00—Van Camp Night Cap
 11:30—WLW Fanfares: Program Dedicated to Portland, Oregon
 Midnight—Netherlands Orchestra: Henry Busse
 12:30 A. M.—Gibson Orch., Kay Kayser

Network Programs

6:00—Current Events; H. V. Kaltenborn, WABC wadw wlap
 —Waldorf-Astoria Empire Room Orchestra. WFAF wtm (on 6:05) (whas wenr on 6:15)
 —Raising Junior: domestic skit. WJZ kyw wgar
 6:15—Vaughn de Leath, with Shapiro and Shefter, piano duo. WABC wfm wspd wcah wadw wlap
 —Paradise of Song. WJZ
 —Skippy, children's program. (NBC) wenr
 6:30—Don Bigelow Orchestra. WABC wfm wcah wadw wlap (on 6:45)
 —The Lone Wolf Tribe, Indian story. (CBS) wbbm wcco wfm kmox
 —Rex Cole Mountaineers, hill-billy music. WFAF
 —Royal Vagabonds, with Ward Wilson. WJZ wlv whas wmaq wapi
 6:45—Arthur Jarrett, songs. WABC wfm wvva wlap
 —Stebbins Boys, comedy sketch. WFAF wsai
 —Lowell Thomas. WJZ wlv kdka
 —Little Orphan Annie (NBC). WENR kstp
 7:00—Wrigley: Myrt and Marge. WABC wkr wspd kmox wvva wadw
 —Vermont Lumberjacks, male quartet. WFAF wgy wwj wsai wenr
 —Amos 'n' Andy. WJZ kdka wgar wjr wlv wcky

NETWORK PROGRAMS

7:15—Cremo: Bing Crosby. WABC wkr wadw whk wcah wspd
 —Campbell Orchestra. WFAF wgy wtm wsai wenr
 —Tastyest Jesters. WJZ wcky kdka
 7:30—Jane Froman, songs. WJZ wenr wcky
 —Pompeian Make-up Box with the Boswell Sisters. WABC wkr wcco wfm whk kmox wcah wadw wlap

NETWORK PROGRAMS

—Prince Albert Quarter Hour: Alice Joy, with orchestra. WFAF wgy wtm wwj wsai
 7:45—The Goldbergs. WFAF wgy wtm wwj wsai wenr
 —Camel Quarter Hour: Morton Downey, Tony Wons, orchestra. WABC wadw whk wkr wcah wspd wlap wfm wcco
 —Waves of Melody, tenor and orchestra. WJZ wcky wmaq
 8:00—Carnation Milk: The Contented Program, male quartet, orchestra. WJZ wcky whas kyw wjr wlv
 —Soconyland Sketches, dramatic sketch. WFAF wgy
 —Linit: The Bath Club, interview, male quartet, orchestra. WABC wkr wcco wfm wspd kmox whk wadw
 8:15—Singin' Sam, the Barbasol Man. WABC wadw whk wkr wspd wfm wcco kmox wgn
 8:30—Voice of Firestone: Lawrence Tibbett, Harvey S. Firestone, Jr., male quartet, orchestra. WFAF wgy wtm wwj wsai wmaq whas
 —La Palina: Kate Smith, songs. WABC wadw wkr wcah wspd wlap wfm kmox wcco whk wgn
 —Death Valley Days: "The Mysterious Stranger," dramatic sketch. WJZ wcky kdka wlv kstp wgar
 8:45—Col. Stoopnagle and Budd. WABC wgn wovo whk wspd kmox wadw wkr
 9:00—Vapex—Mills Brothers. WABC wkr wgn wovo whk wspd kmox wadw

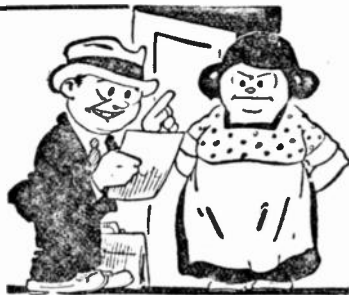
NETWORK PROGRAMS

—A. & P. Gypsies, tenor and orchestra. WFAF wgy wtm wwj wsai wmaq
 —Maytag Dance Orchestra, directed by Roy Barge, with male quartet. WJZ kdka wjr wlv wgar kstp
 9:15—Frostilla Broadcast Rehearsals: orchestra and vocalist. WABC wkr wgn wovo wspd wadw
 9:30—Bourjois: Evening in Paris: Pierre Brugnol, guest artist, Max Smolen Orchestra. WABC wkr wgn wovo wcco whk wspd kmox wadw
 —Parade of the States: "Nevada," soloists, mixed chorus, orchestra. WFAF wgy wtm wwj wsai whas wenr
 —Robert Burns Program. WJZ kdka
 10:00—Robert Burns Panatella: Guy Lombardo Orchestra. WABC wadw whk wkr wspd wovo wfm wbbm wcco kmox
 —New National Radio Forum. WFAF wsai wtm wenr wgy wwj
 —With Canada's Mounted, dramatization, with music. WJZ wlv kdka wmaq wjr wgar
 10:30—Chesterfield: Alexander Gray, Nat Shilkret Orchestra. WABC wkr wbbm wovo wcco wfm whk wspd kmox wcah wadw
 —Mr. Bones and Company. WFAF wsai
 —Archer Gibson Ensemble, organ and soloists. WJZ kdka
 10:45—Street Singer. WABC wadw
 —Wrigley: Myrt and Marge. (CBS) wbbm wcco

NETWORK PROGRAMS

11:00—Don Redman's Orchestra. WABC
 —Cremo: Bing Crosby. (CBS) wgn wovo wcco wfm kmox wlap
 —Waldorf-Astoria Dance Orchestra. WFAF (wgy off 11:15)
 —Prince Albert Quarter-Hour: Alice Joy, with orchestra. (NBC) whas wenr
 —Slumber Music, string ensemble. WJZ wjr (wcky on 11:15)
 —Amos 'n' Andy. (NBC) whas wenr kstp
 11:15—Toscha Seidel, violin. WABC wkr wspd wcah wadw wlap
 —Prince Albert Quarter-Hour. (NBC) whas wenr wapi
 —Lowell Thomas. (NBC) wmaq
 11:30—Enric Madriguera's Orchestra. WABC
 —Camel Quarter-Hour: Morton Downey, Tony Wons, orchestra. (CBS) wgn wovo
 —Jesse Crawford, organ. WFAF wcky wgy wwj wmaq
 —Don Pedro's Orchestra. WJZ
 11:45—Enric Madriguera's Orchestra. WABC wfm wadw wlap wkr
 —Mills Orchestra. WFAF wcky wgy wwj wmaq
 Midnight—Ben Bernie Orchestra. WABC wkr wfm wcco
 —Earl Hines Orchestra. WFAF wapi
 —Piano Moods: Lee Sims, piano; Ilo May Bailey, songs. WJZ kdka wgar wjr wenr
 12:15 A. M.—Peter Van Steeden and Orchestra. WJZ wgar wjr wenr
 12:30—Carl Morris and his Orchestra. WFAF
 —Noble Sissle Orchestra. WABC wfm wlap wcco
 1:00—Dave Abrams' Barn Orchestra. WABC
 1:30—Roseland Ballroom Orchestra. WABC

**No doubts
No wonders
No slips**



Mr. Salesman's going to have a hard time selling Mrs. Prospect. She's all out of sorts because she missed her favorite radio entertainer this morning.

Don't let the program you enjoy most go unheard because you didn't know it "was on." RADIO DIAL will see that you get full value of your radio by pointing out WHAT'S on the air and WHERE to find it. Order your copies today.

RADIO DIAL

22 E. 12th St., Cincinnati, Ohio.

Deliver RADIO DIAL to me every week for six months (26 weeks). Enclosed is one dollar (check, currency, money order).

Name _____

Address _____

City _____

State _____

☐ New Subscriber

☐ Renewal (please check)

1-C

Second Church of Christ, Scientist, Cincinnati, Ohio

A FREE LECTURE ON CHRISTIAN SCIENCE

by PETER V. ROSS, C. S. B. of San Francisco, California

Member of The Board of Lectureship of The Mother Church, The First Church of Christ, Scientist, in Boston, Massachusetts.

in EMERY AUDITORIUM
WALNUT STREET AT THE PARKWAY

MONDAY EVENING, JANUARY 25, 1932

at 8:15 P. M.

The Public is Cordially Invited

BURCK-BAUER, Inc.

807 Race St., Cincinnati, Ohio

Westinghouse Radios and Refrigerators.
General Motors and Sparto Radios.
Intelligent service on all makes Radios and Refrigerators.

Phone Parkway 5600

COMPLETE PROGRAMS FOR TUESDAY, JANUARY 26, ON THIS PAGE

WSAI (225m.—1330 kc.)

8:00 A. M.—Gene and Glenn (NBC)
8:15—McCormick Fiddlers
8:45—WSAI Morning Dance Concert
9:15—Knox Sparkling Music (NBC)
9:30—Popular Musicals
10:00—Mrs. Blake's Radio Column (NBC)
10:15—Musical Forum
10:45—Big Ben Musical Dreams (NBC)
11:00—"Your Child" (NBC)
11:15—Radio Household Institute (NBC)
11:30—Dance Selections
Noon—G. E. Home Circle (NBC)
12:15 P. M.—Midday Musicals
12:50—Live Stock Reports
1:00—Organ Program, Connie Blinn
1:30—Afternoon Dance Concert
2:00—McCormick Fiddlers
2:15—Light Classics
3:00—Woman's Radio Review (NBC)
4:00—Classical Program
4:15—Crosley Dealers' Salute
4:30—Concert Program
5:00—Dave Roberts, banjo
5:15—Skippy (NBC)
5:30—Celebrated Compositions
5:45—Memory Hour
6:30—Ramona
6:45—Stebbins Boys (NBC)
7:00—Midweek Hymn Time (NBC)
7:30—Prince Albert Program (NBC)
7:45—The Trials of the Goldbergs (NBC)
8:00—Blackstone Plantation (NBC)
8:30—True Story Hour (NBC)
9:00—McKesson Musical Magazine (NBC)
9:30—Fuller Brush Man (NBC)
10:00—Lucky Strike Dance with Walter Winchell (NBC)
11:00—Netherlands Orchestra: Henry Busse

Network Programs

6:00 P. M.—Waldorf-Astoria Orchestra
WEAF wenr whas wtam (on 6:05)
—Arthur Jarrett, songs. WABC wlap
wcco wad wch wsd wbbm
—Raising Junior, domestic skit. WJZ
wjr wgar kyw
6:15—Ramses Program, piano duo, baritone. WJZ
—Peter van Steeden and Orchestra.
(NBC) wgar
—Reis and Dunn. WABC wad wlap
wcco wvwa wsd wbbm
—Skippy, children's program. (NBC)
wenr
6:30—The Sylvanians. WABC wkrc wgn
wcco whk kmox
—Rex Cole Mountaineers: hill-billy
music. WEAF
—Three Mustachios, male trio.
(NBC) wenr
—Jergens: Ray Perkins, the Old
Topper. WJZ wlv wmaq wgar
6:45—Frank Stretz Orchestra. WABC
whk wbbm
—The Stebbins Boys: comedy.
WEAF wsa wtam wgy wvj
—Lowell Thomas: Literary Digest
Topics in Brief. WJZ wlv kdka
—Little Orphan Annie. (NBC) wenr
7:00—Mid-Week Federation Hymn Sing.
WEAF wsa wjr (kstp on 7:15)
—Amos 'n' Andy. WJZ wlv kdka
wky wjr wgar
—Wrigley: Myrt and Marge. WABC
wad wkrc wsd wcco wvwa wad
—Connie Boswell, songs. (CBS)
wbbm
7:15—Cremo—Bing Crosby. WABC wad
whk wkrc wch wsd
—Campbell Orchestra. WEAF wsa
wtam wenr wgy
—Keds Program: "Just Willie." Arthur
Fields, Fred Hall's Orchestra.
WJZ wlv wenr
7:30—Jane Froman, songs. WJZ wenr
—Prince Albert Quarter Hour: Alice
Joy, with orchestra. WEAF wsa
wgy wtam
—Kaltenborn Edits the News. WABC
wad whk wkrc wfm wbbm kmox
wfm wcco
7:45—Camel Quarter Hour: Morton
Downey, Tony Wons, orchestra.
WABC wkrc wad whk wfm wcco
kmox
—The Goldbergs. WEAF wsa wgy
wenr wtam wvj
—Back of the News in Washington.
WJZ wky
8:00—Linit: The Bath Club, interview,
male quartet, orchestra. WABC
wcco wfm kmox wad
—Blackstone Plantation: Julia Sand-
erson, Frank Crumit, orchestra.
WEAF wgy wtam wvj wsa kyw
—Voters' Service: "World Disarma-
ment in 1932." WJZ wky wls
8:15—Sterling Products: Abe Lyman's
Orchestra. WABC wgn wad whk
wkrc wsd wfm wcco kmox
8:30—Heel Hugger Harmonies, male quar-
tet, string ensemble. WJZ wls
—La Palina: Kate Smith, songs.
WABC wad whk wlap wcco wkrc
wfm kmox
—True Story, dramatic sketch.
WEAF wsa wtam wgy whas

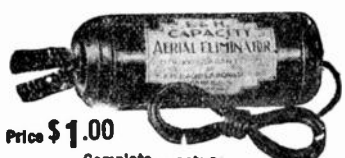
WFBE (250m.—1200 kc.)

7:00 A. M.—Break of Day
7:15—Musical Clock
8:15—Birthday Party
8:30—Morning Concert
9:00—Our Daily Thought
9:15—Dulcy Markham, the Mountain Girl
9:30—Concert Hour
9:45—Home Harmonies
10:05—Dot: Bright Saying Program
10:20—Julius Monk
10:35—WFBE-RKO Theatre Party
10:50—Anita Auch, dietitian
11:00—Happiness Club
11:15—Parker Keith
11:30—Housewives' Frolic
11:45—Dry Ridge Health Hints
Noon—Around the Town with Frank and
Larry
12:30 P. M.—Sara Drucker
12:45—How It Began
1:00—Studio
1:15—Story Telling Time
1:30—Day Dreams
1:45—Frank Brandstetter
2:00—WFBE DEDICATION
2:00—Around the Clock with Frank and
Larry
2:15—Hy C. Geis, organ recital
2:30—Ralph Pinkston
2:45—Tom and Jerry
3:00—Pauline Gidding Ungar
3:15—Adelaide Apfel
3:30—Marion Hemple
3:45—Charles Daunt and Frank Brand-
stetter
4:00—Covington and Hersh
4:15—Galvano and Cortez
4:30—Royal Troubadors
4:45—James A. Dorsey
5:00—Bee Campbell
5:15—Dixie Trio
5:30—Jules Sien and Sara Drucker
5:45—Murdock Williams
6:00—Emma Methvin and Bernice Stugard
6:15—Radio Sunbeams
6:30—Bag and Baggage
6:45—Max Fisher and His Californians
7:15—Daffydils
7:30—Trio Singers and Bilsimar Trio
7:45—Bertha Mathers and Carol Mathis
Tiemeyer
8:00—Audrey Gillespie and Mrs. Adolf
Hahn
8:15—Dedication Speeches
8:30—Rae Samuels, RKO Albee
8:45—Dave Apollon
9:00—Frank Simon and Armco Band
9:35—John Horgan
9:45—Leo Polski
10:00—Henry Grad, baritone
10:15—Bill Holland's Melodians, La Vista
10:30—Frank and Larry
10:45—Soprano, Tenor and Trio
11:00—Harvey Harding
11:15—Jewel Litz and Mildred Prigge
11:30—Max Fisher—Sinton

NETWORK PROGRAMS

8:45—La Gerardine Program. WABC
wad whk wsd wcco wgn kmox
—Sisters of the Skillet. WJZ kdka
wls
9:00—McKesson Musical Magazine.
WEAF wgy wtam wvj wsa wls
whas
—Ben Bernie Orchestra—Blue Rib-
bon Malt. WABC wad whk wkrc
wgn wcco wsd
—Household Finance Program: "The
Dress Rehearsal," dramatic sketch.
WJZ kdka wmaq wjr
9:30—The Fuller Man, soprano, baritone,
orchestra. WEAF wgy wtam wvj
wsa kyw kstp
—Great Personalities: Frazier Hunt.
WJZ kdka wgar wjr wlv wenr
—Eno Crime Club. WABC wad
whk wkrc wgn wsd wcco kmox
10:00—Lucky Strike Dance Hour, with
Walter Winchell. WEAF wtam
wvj wsa wenr whas (on at 10:30)
—"The Shadow." WABC wkrc wbbm
wcco wfm whk wsd kmox
wad
—Listerine: Russ Columbo and his
Orchestra. WJZ wky wjr wgar
10:15—Bavarian Peasant Band. WJZ
kdka
10:30—Clara, Lu and Em, gossip. WJZ
kdka wgar wjr kyw wky
—Chesterfield: Alexander Gray, Nat
Shilkret Orchestra. WABC wkrc
wbbm wcco wfm whk wsd kmox
wad
10:45—Paris Night Life. WJZ kdka wgar
kyw wky

F. & H. CAPACITY AERIAL



Price \$1.00

Complete, -ostra

Every Instrument Tested on Actual 1127 Mile Reception
A LARGE NUMBER ARE IN USE BY
GOVERNMENT. IN NAVY HOSPITAL.
The F. & H. Capacity Aerial Eliminator has the
capacity of the average 75-foot aerial, 50 feet high.
It increases selectivity and full reception on both
local and long distance stations is absolutely guar-
anteed. It eliminates the outdoor aerial along with the
unsightly poles, guy wires, mutilation of
woodwork, lightning hazards, etc.

ON SALE AT

KRAUSS RADIO STORES

111 E. FIFTH ST., CINCINNATI, O.
Mail Orders Promptly Filled.

WKRC (545m.—550 kc.)

6:45 A. M.—Sunrise Worship
7:45—Gladys Catron, Organist
8:00—Hamilton Business Hour
8:15—Hodges Brothers, mountain songs
8:30—Pyol Program: The Sizzlers
8:45—Studio
9:00—Jean West Shopping Talk
9:15—Wilmack-Bi-Co-Late Program
9:30—Consolidated Merchants
10:00—Grant Trio (CBS)
10:15—Weather; Lange Time Signal
10:18—Woman's Hour—Tremette Tully
10:45—Julia Hayes Household Hints
11:15—The Ambassadors (CBS)
11:30—Dill: Political Series (CBS)
11:45—Ben Alley, tenor (CBS)
Noon—S. C. Johnson and Son Program
12:05 P. M.—Skip and Step
12:22—Studio
12:30—Cincinnati Merchants
1:00—Pabst-ette Varieties (CBS)
1:15—Farm Network (CBS)
2:00—Aunt Jemima Songs (CBS)
2:15—Salon Orchestra (CBS)
2:30—American School of the Air:
Vienna, the Musical Capital (CBS)
3:00—Ann Leaf, organ (CBS)
3:30—Musical Americana: Edward Mac-
Dowell Music (CBS)
4:00—Rhythm Kings (CBS)
4:15—Funny Boners (CBS)
4:30—George Hall's Orchestra (CBS)
4:45—Steinberg Program
5:00—George Hall's Orchestra (CBS)
5:15—Meet the Artist (CBS)
5:30—Cincinnati Trade School: Piano
5:45—Lucky Kids (CBS)
6:00—Pat Gillick, organ
6:15—Sports Review; Stocks
6:30—The Sylvanians (CBS)
6:45—A. O. Rust: Happy Feet
6:50—Studio; Lange Time (6:59)
7:00—Wrigley—Myrt and Marge (CBS)
7:15—Cremo—Bing Crosby (CBS)
7:30—Kaltenborn Edits the News (CBS)
7:45—Camel Quarter Hour: Morton
Downey, Tony Wons (CBS)
8:00—Linit: The Bath Club, Julia Hoyt,
actress (CBS)
8:15—Abe Lyman's Orchestra (CBS)
8:30—La Palina—Kate Smith (CBS)
8:45—La Gerardine Program (CBS)
9:00—Ben Bernie's Blue Ribbon Malt
Orchestra (CBS)
9:30—Eno Crime Club: "The Case of Joe
Attymer," by Edgar Wallace (CBS)
10:00—The Shadow: "Friday, the 13th"
(CBS)
10:30—Chesterfield: Shilkret's Orchestra,
Alex Gray, baritone (CBS)
10:45—Eddie Schoelwer, piano
11:00—Time; Weather; Sports
11:15—Howard Barlow Symphony (CBS)
11:30—Memories
11:45—George Olsen Orchestra (CBS)
Midnight—Noble Sissle's Orch. (CBS)

NETWORK PROGRAMS

—Speech by Jovett Shouse, Chairman
National Democratic Committee
WABC wad
—Wrigley: Myrt and Marge. (CBS)
wbbm wcco wlap
11:00—Enric Madriguera's Orchestra.
WABC
—Cremo: Bing Crosby. (CBS) wgn
wcco wfm kmox wlap
—Slumber Music: String Ensemble.
WJZ wjr
—Amos 'n' Andy. (NBC) whas
wmaq wenr kstp
—Marion Harris, songs. WEAF wgy
wvj
11:15—Jesse Crawford, organ. WEAF wky
—Howard Barlow and Columbia Sym-
phony Orchestra. WABC wkrc
wfm wsd wch wad wlap
—Prince Albert Quarter-Hour: Alice
Joy, with orchestra. (NBC) whas
wenr wapi
11:30—George Olsen Orchestra. WABC
—The Camel Quarter-Hour: Morton
Downey, Tony Wons, orchestra.
(CBS) wgn wcco

WCKY (202m.—1490kc.)

7:00 A. M.—Morning Melodies
7:30—Kentucky Mountaineer, Little Jimmy
7:45—Kapua's Hawaiians
8:00—Organ Eye Openers
8:15—Morning Devotions (NBC)
8:30—Cheerio (NBC)
9:00—Waltzes, old and new
9:30—Band Music
9:45—Tunes in Blue
10:00—Vocal Varieties
10:30—Classic Hour
11:00—Musical Novelties
11:30—Cumberland Crooners
Noon—Luncheon Concert
12:15 P. M.—Johnson Wax Program
12:20—Musical Interlude
12:25—Live Stock Quotations
12:30—National Farm and Home (NBC)
1:30—Piano Novelties
2:15—Moods in Indigo
2:30—Music Masters
3:00—Siesta Musicals
3:15—Matinee Melodies
3:45—Kapua's Hawaiians
4:00—"This 'n' That"
4:15—Stars of Today
4:30—Tantalizing Tunes
4:45—Phil Spitalny Tea Dansante (NBC)
5:00—"Snow" Drifts, Jack Snow
5:15—Asher Sizemore and Jimmy
5:30—Story Book Time
5:45—Radio and Television Institute
6:00—Tommie and Willie
6:30—To be announced (NBC)
6:45—Late Dance Tunes
6:55—News Report
7:00—Amos 'n' Andy (NBC)
7:15—Les, Bud and Joe
7:30—Jane Froman and Her Orchestra
(NBC)
7:45—Back of Washington News (NBC)
8:00—Voters' Service (NBC)
8:20—"It Pays to Advertise"
9:00—Mystery Drama: "Dr. Dragonette"
9:30—Tommy Thomas Music, Club Royal
10:00—Listerine: Russ Columbo (NBC)
10:15—Tommy Ott, pianist
10:30—Clara, Lu and Em (NBC)
10:45—Paris Night Life (NBC)
11:00—Coca Cola
11:15—Slumber Music (NBC)
11:30—Jack Denny's Orchestra (NBC)

NETWORK PROGRAMS

—Jack Denny and Orchestra. WEAF
wtam wvj (wenr off 11:45) wky
—Sylvia Froos, songs. WJZ
11:45—Dream Pictures: Organ WJZ wgar
wjr wenr (kdka on 12:00)
—George Olsen Orchestra. WABC
wfm wsd wch wad wlap
Midnight—Noble Sissle Orchestra.
WABC wkrc wcco wsd wlap
—Ralph Kirby, songs. WEAF wvj
12:05 A. M.—Rudy Vallee. WEAF wvj
(wenr on 12:15)
12:15—Charlie Agnew's Edgewater Beach
Hotel Orchestra. WJZ wgar kyw
12:30—Cafe de la Paix Orchestra. WABC
wcco wfm wsd wlap
—Seymour Simon's Orchestra.
WEAF wenr wvj
1:00—Hotel Bossert Orchestra. WABC
1:30—Roseland Ballroom Orch. WABC

WLW (428m.—700 kc.)

6:30 A. M.—International Fiddlers
7:00—Physical Exercises
7:15—Talent Bureau Program
7:30—Organ: Arthur Chandler, Jr.
7:45—Jolly Bill and Jane (NBC)
8:00—Morning Devotions
8:15—Phil Cook, the Quaker Man (NBC)
8:30—Talent Bureau Program
8:45—Physical Exercises
9:00—Ford Rush
9:15—Recipes by Max of Netherland
Plaza
9:30—Beautiful Thoughts (NBC)
9:45—Wilson Premium Man
10:00—Live Stock Reports
10:10—Maltine Announcement
10:15—A. & P. Orchestra
10:30—Colonel Goodbody (NBC)
10:45—Davis Mystery Chef (NBC)
11:00—Mrs. A. M. Goudiss (NBC)
11:15—Talent Bureau Program
11:30—Through the Looking Glass (NBC)
11:45—River; Weather; Time
Noon—Tuxedo Entertainers, with "Boss"
Johnstone
12:15 P. M.—Pat Barnes in Person (NBC)
12:30—Gibson Orchestra, Isham Jones
12:45—Markets; Live Stock Reports
1:00—National Farm and Home (NBC)
1:30—Netherlands Orchestra: Henry Busse
2:00—Ohio School of the Air
3:00—Pat Harrington, tenor
3:30—Travel Talk
3:45—Plantation Days
3:55—Talent Bureau Program
4:00—A. & P. Orchestra
4:30—Organ Matinee
4:45—The Chatter
5:00—Maltine Story Hour (NBC)
5:30—The Singing Lady (NBC)
5:45—Little Orphan Annie (NBC)
6:00—Old Man Sunshine
6:15—Netherlands Orchestra: Henry Busse
6:30—Jergens: Ray Perkins (NBC)
6:45—Lowell Thomas (NBC)
7:00—Amos 'n' Andy (NBC)
7:15—Keds: Little Willie and Orchestra
(NBC)
7:30—Netherlands Orchestra: Henry Busse
7:45—Tangee Musical Dreams, with
Henry Thies Orchestra
8:00—R. F. D. Hour
8:15—Vincent Lopez and his Valvoliners
8:30—Werk Bubble Blowers, Hink & Dink
9:00—Maxwell House Cotton Queen with
Syd Ten Eyck and Bob Burdette
9:30—Great Personalities (NBC)
10:00—Chevrolet Chronicles
10:30—Seger Ellis and Orchestra
10:45—Bob Newhall Sports Slices
11:00—Van Camp Program
11:30—Los Amigos, Spanish program
Midnight—Netherlands Orchestra: Henry
Busse
12:30—Gibson Orchestra, Kay Kayser

Mme. Olga Sorova, who reads
outlines of her listeners' palms over
WSMK, has planned to read the
palms of six of Dayton's leading
citizens including the mayor and
city manager. Her daily period is
broadcast at 2:30 p. m.

The Oldsmobile Melody Speed-
way from WSMK (Sunday, 9:15
p. m.; Wednesday, 7:15 p. m.) is
produced by a large cast of radio
celebrities including Aileen Stanley,
"Scrappy" Lambert, the four pian-
ists, Phil Ohman, Victor Arden,
Gene Rodemich and Dan Lieber-
field, and Gus Haenschel's 30-piece
dance band.

Your Eyes
are worth looking into

We offer you our 26 years' experience
in solving your eye problems—you will
find our prices always the most reasonable.

GIBSON OPTICAL CO.
DR. F. E. REUSCH - OPTOMETRIST

430 Walnut St. Near Opposite
5th St. Hotel Gibson

PLAY SAFE!
Call Bob, he will fix it
R. PAUL
RADIO SERVICE
24 Hour Service Main 3902

Expert Radio Service

NOW—for **50c**
We Will
Inspect
Your Set and
Test Your
Tubes in
Your Home.

The Tommy Griffith Co.

MEIrose 5370
4566 Main Ave.
Norwood

Genuine
NEW RCA
RADIO TUBES

From **69c**

Parkway 4024, 614 Main St., Cincinnati, O.

7:00 P.M.
WABC WKRC
Every night except
Saturday and Sunday

DIFFERENT! A
serial story of TWO
SHOW GIRLS. Smiles..
Tears.. Romance..

Tune in Tonight
Begin Right Away

Myrt and Marge

WRIGLEY'S

COMPLETE PROGRAMS FOR WEDNESDAY, JANUARY 27, ON THIS PAGE

WSAI (225m.—1330 kc.)

8:00 A. M.—Gene and Glenn (NBC)
8:15—McCormick's Fiddlers
8:45—WSAI Morning Dance Concert
9:15—Musical Tid Bits
9:30—Popular Musicals
10:00—Mrs. Blake's Radio Column (NBC)
10:15—Jane Grant's Steero Hour (NBC)
10:30—National Home Hour (NBC)
11:00—Keeping Up With Daughter (NBC)
11:15—Radio Household Institute (NBC)
11:30—Dance Selections
Noon to 12:15—G. E. Home Circle (NBC)
12:50 P. M. to 1:00—Live Stock Reports
2:00—Woman's Radio Review (NBC)
4:00—Mary Steele, contralto
4:15—Crosley Dealers' Salute
4:30—Concert Program
5:00—Sam Wilson, baritone
5:15—Skippy (NBC)
5:30—Civil Service Talk
5:35—Memory Hour
6:00—Chevrolet Chronicles
6:30—Accordion and Tenor
6:45—Stebbins Boys (NBC)
7:00—Vincent Lopez Orchestra
7:15—Campbell Soup Orchestra (NBC)
7:30—Prince Albert Program (NBC)
7:45—The Trials of the Goldbergs (NBC)
8:00—"Big Time," humorous sketch (NBC)
8:30—Sousa's Goodyear Band and Revelers Quartet (NBC)
9:00—Halsey Stuart Program (NBC)
9:15—Mobil Oil Concert (NBC)
10:00—Coca Cola Program with Grantland Rice and guest (NBC)
10:30—Netherland Orchestra: Henry Busse
11:00—Gibson Orchestra: Kay Kayser

Network Programs

6:00 P. M.—Waldorf-Astoria Orchestra. WFAF wjw wtam (on 6:05) whas (on 6:15)
—John Kelvin, Irish tenor; Vincent Storey's Orchestra. WABC wcah wadw wlap
—Music Treasure Box. WJZ wenr
6:15—Rameses Program: Piano duo, baritone, speaker. WJZ
—Skippy, children's program. (NBC) wenr
—St. Moritz Orchestra. WABC wadw kmox wlap wspd wvwa
6:30—Rex Cole Mountaineers: Hill-billy music. WFAF
—The Lone Wolf Tribe: Indian Story (CBS). wbbm wcco
—The Royal Vagabonds, with Ward Wilson. WJZ wcky
6:45—Lowell Thomas. WJZ kdka wlv
—Little Orphan Annie (NBC). wenr
—The Stebbins Boys. WFAF wtam wjw wsa1 wgy
—Arthur Jarret, songs. WABC
7:00—Wrigley: Myrt and Marge. WABC wadw wkrc wspd kmox
—Reva Reyes, contralto. WFAF
—Amos 'n' Andy. WJZ kdka wgar wjr wlv wcky
7:15—Sundial Bonnie Laddies: Vocal trio. WJZ
—Cremo—Bing Crosby. WABC wadw wkrc wcah wspd
—Campbell Orchestra. WFAF wgy wtam wsa1 wenr
7:30—Prince Albert Quarter Hour: Alice Joy with Orchestra. WFAF wgy wtam wjw wsa1
—Pompeian Make-up Box: Boswell Sisters, songs. WABC wcco wadw wkrc wcah wspd kmox wkrc
—Jane Froman, songs. WJZ wenr wcky
7:45—Esse Program: Ripley. WJZ kdka
—Camel Quarter Hour: Morton Downey, Tony Wons, Orchestra. WABC wadw wkrc wcah wspd wlap wbbm wcco kmox
—The Goldbergs. WFAF wgy wtam wjw wsa1 wenr

WFBE (250m.—1200 kc.)

7:00 A. M.—Break of Day
7:15—Musical Clock
8:15—Birthday Party
8:30—Morning Concert
9:00—Our Daily Thought
9:15—Hy C. Gejs, organ recital
9:45—Ray Richardson
10:05—Dot: Bright Saying Program
10:20—Studio
10:35—WFBE-RKO Theatre Party
10:50—Mrs. Evans' Advice
11:00—Mary and John
11:15—Morning Serenade
11:30—Housewives' Frolic
11:45—Dry Ridge Health Hints
Noon—Around the Town with Frank and Larry
12:30 P. M.—How It Began
12:45—Luncheon Melodies
1:00—Studio
1:15—Story Telling Time
1:30—Slumber Songs
2:00—Chas. Daunt, tenor
2:15—Waltz Time
2:45—Dedication Program
3:15—Studio
3:30—Marion Hemple
3:45—Studio
4:00—Studio
4:15—Beatrice Hoehaw, book review
4:30—Tea Time Tunes
4:45—Galvano and Cortes
5:00—Central Vine Street Business Men
5:15—The Pirates' Club
5:30—Bee Campbell's Blues
5:45—Jules Sien
6:00—Music Masters
6:15—Studio
6:30—Sonata Sports Forecaster: Harry Hartman
6:35—Bag and Baggage
6:45—Max Fisher's Californians
7:15—Post Question Box
7:30—Sports Review, Harry Hartman
7:45—Forgetmenots
8:00—Studio
8:15—Radio Sunbeams
8:30—Bill Holland's Melodians, La Vista
9:00—Lucky Boys
9:15—Geo. Nethers' Orchestra
9:45—Reveries
10:00—Max Fisher's Californians from Club Chatter Box
10:30—Bilsimar Trio

Network Programs

8:00—Linit: The Bath Club, interview, male quartet, orchestra. WABC wcco wbbm kmox wadw wspd wkh wkrc
—Big Time: Humorous Sketch. WFAF wsa1 wtam wgy wmaq wjw
—"Tax Lobbying and the Freedom of the Air," Rep. Fiorello H. LaGuardia. WJZ wcky wlv
8:15—The Mellow-Clarions: trio, organ, orchestra. WJZ wgar wjr wcky kyw whas
—Singin' Sam, the Barbasol Man. WABC wadw wkrc wgn wspd wbbm kmox
8:30—Goodyear: Sousa's Band; Revelers Quartet. WFAF wgy wtam wjw wsa1 kyw whas
—La Palina: Kate Smith, songs. WABC wgn wadw wkrc wcah wspd wlap wbbm wcco kmox
—Jack Frost Melody Moments, tenor, quartet, orchestra. WJZ kdka wgar wjr wlv wls
8:45—Col. Stoopnagle and Budd. WABC wgn wovo wkrc wadw wkrc
9:00—Adventures of Sherlock Holmes. WJZ kdka wgar wjr wlv wmaq
—Halsey Stuart Program. WFAF wtam wjw wsa1 wls whas kyw kstp
—Gold Medal Fast Freight, quartet and organ. WABC wadw wkrc wgn wovo wbbm wcco kmox
9:30—Dutch Masters Program: Walter Scanlon, Billy Murray, Marcella Shields. WJZ kdka wgar wjr wlv wmaq wenr

THEO. G. STEINLE CHIROPRACTOR

PALMER GRADUATE
Office Hours: 9 A. M. to 5 P. M.
311 Lyric Theatre Bldg.
Main 4835 Cincinnati, O.

JANE GREY and
The Kampf Artists
Mon., Wed., Fri.
11:45 A. M.
Sponsored by
The A. W. Kampf Jewelry Co.
Diamond Remounting Specialists
18 W. Sixth St. Cincinnati, O.

WKRC (545m.—550 kc.)

6:45 A. M.—Sunrise Worship
7:45—Gladys Catron, Organist
8:00—Around the Clock
8:15—Hodges Brothers, mountain songs
8:30—Pyol Program: The Sizzlers
8:45—The Old Dutch Girl (CBS)
9:00—Jean West Shopping Talk
9:15—Willmack-Bi-Co-Late Program
9:30—Consolidated Merchants Program
10:00—Grant Trio (CBS)
10:15—Weather; Lange Time Signal
10:18—Woman's Hour—Tremlette Tully
10:45—Four Clubmen (CBS)
11:00—Marmola Orchestra
11:15—Queen City Rug Makers
11:30—Morning Minstrels (CBS)
11:45—Jane Grey and "Kampf, the Jeweler, Artists"
Noon—S. C. Johnson and Son Program
12:05 P. M.—Skip and Step
12:22—Studio
12:30—Cincinnati Merchants' Program
1:00—Studio
1:15—Fire Prevention Talk
1:20—Farm Network (CBS)
2:00—Aunt Jemima Songs (CBS)
2:15—Burck-Bauer Organ Melodies
2:30—American School of the Air: Art Appreciation (CBS)
3:00—Edna Wallace Hopper (CBS)
3:15—Julia Hayes Household Hints
3:45—Salon Orchestra (CBS)
4:00—U. S. Navy Band (CBS)
4:45—Steinberg Program
5:00—Kathryn Parsons, songs (CBS)
5:15—Uncle Ollie's Kremel Gang (CBS)
5:30—Cincinnati Trade School: Piano
5:45—Wrigley: Lone Wolf Tribe (CBS)
6:00—Pat Gillick, organ
6:15—Sports Review; Weather; Studio
6:40—A. O. Rust: Happy Feet
6:45—Wurzberg: The German and His Parrot; Lange Time
7:00—Wrigley: Myrt and Marge (CBS)
7:15—Cremo—Bing Crosby (CBS)
7:30—Pompeian: Boswell Sisters (CBS)
7:45—Camel Quarter Hour: Morton Downey, Tony Wons (CBS)
8:00—Linit: The Bath Club, Mme. Akma Clayburg, concert singer (CBS)
8:15—Singin' Sam, Barbasol Man (CBS)
8:30—La Palina—Kate Smith (CBS)
8:45—Col. Stoopnagle and Budd (CBS)
9:00—Gold Medal Fast Freight (CBS)
9:30—Eno Crime Club: "The Case of Joe Attymar," by Edgar Wallace (CBS)
10:00—Vitality Personalities: Artella Dickson, baritone (CBS)
10:15—Weed Tire Chain Program (CBS)
10:30—Chesterfield: Shilket's Orchestra, Alex Gray, baritone (CBS)
10:45—Studio
11:00—Time; Weather; Studio
11:15—Toscha Seidel, violinist (CBS)
11:30—Memories
11:45—Don Redman's Orchestra (CBS)
Midnight—Eddie Duchin's Orch. (CBS)
12:30 A. M.—Art Krueger Orchestra (CBS)

Network Programs

—Eno Crime Club: WABC wadw wkrc wgn wspd wovo kmox
—Mobil Oil Concert: Soprano, baritone, orchestra. WFAF wgy wtam wjw wsa1 wmaq whas
10:00—Vitality Personalities: Guest artist, male quartet, orchestra. WABC wkrc wbbm wovo wcco wbbm wkrc wadw wkrc wcah wadw
—Coca Cola Program: Interview, tenor, orchestra. WFAF wgy wtam wjw wsa1 wenr whas
—Listerine: Russ Columbo and his Orchestra. WJZ wcky wmaq wjr wgar
10:15—Tune Detective: Sigmund Spaeth. WJZ
—Weed Tire Chain Program: Mixed Quartet and Symphony Orchestra. WABC, wadw wkrc wgn wspd wovo wcco kmox
10:30—David Guion and his Orchestra. WFAF wtam wgy wenr wjw
—Clara, Lu and Em, gossip. WJZ kdka wgar wjr kyw wcky
—Chesterfield: Alexander Gray, Nat Shilket Orchestra. WABC wkrc wbbm wovo wcco wbbm wkrc wadw kmox wadw
10:45—Hollywood Nights: Tenor and Orchestra. WJZ wcky kdka kyw wjr wgar
—Street Singer. WABC
—Wrigley: Myrt and Marge. (CBS) wbbm wcco wlap
—David Guion and Orchestra. WFAF wtam wgy wenr wjw
11:00—Slumber Music: String Ensemble. WJZ wjr (wcky on 11:15)
—The Voice of Radio Digest: Guest artist. WFAF wtam wjw
—Leon Belasco Orchestra. WABC
—Cremo: Bing Crosby. (CBS) wgn wovo wcco wbbm kmox wlap

REMEMBER CHAS. W. NEYER

For Your New Home
1980 Baltimore Ave.
Cincinnati, O. West 6150

ELECTRIC WASHERS

All makes and models.
Terms as low as
\$1.25 Per Week
GOLDEN RULE ELECTRIC CO.
137 W. 7th CHerry 3702
CINCINNATI

WCKY (202m.—1490kc.)

7:00 A. M.—Morning Melodies
7:30—Asher Sizemore and Little Jimmy
7:45—Kapua's Hawaiians
8:00—Organ Eye Opener
8:15—Morning Devotions (NBC)
8:30—Cheerio (NBC)
9:00—Waltzes, old and new
9:15—Dr. Copeland (NBC)
9:30—Band Music
9:45—Tunes in Blue
10:15—Vocal Varieties
10:30—Classic Hour
11:00—Mrs. A. M. Goudiss (NBC)
11:15—Musical Novelties
11:30—Cumberland Crooners
Noon—Luncheon Program
12:15 P. M.—Johnson Wax Program
12:20—Musical Interlude
12:25—Live Stock Quotations
12:30—National Farm and Home (NBC)
1:30—Organ Music
2:00—Popular Dance Tunes
2:15—Moods in Indigo
2:30—Music Masters
3:00—Siesta Musicale
3:15—Matinee Melodies
3:45—Kapua's Hawaiians
4:00—The Interpreters
4:15—Stars of Today
4:30—Tantalizing Tunes
4:45—Phil Spitalny Tea Dansante (NBC)
5:00—"Snow" Drifts, Jack Snow
5:15—Asher Sizemore and Little Jimmy
5:30—Story Book Time
5:45—Radio and Television Institute
6:00—Tommie and Willie
6:30—Royal Vagabonds with Ward Wilson (NBC)
6:45—Late Dance Tunes
6:55—WCKY News Report
7:00—Amos 'n' Andy (NBC)
7:15—Four Aces
7:30—Jane Froman and Orchestra (NBC)
7:45—Chico 'n' Peppina
8:00—Parody Man
8:15—Mellow Clarions (NBC)
8:30—"It Pays to Advertise"
9:00—Sundodgers
9:30—Tommy Thomas Music, Club Royal
10:00—Listerine: Russ Columbo (NBC)
10:15—Cumberland Crooners
10:30—Clara, Lu and Em (NBC)
10:45—Hollywood Nights (NBC)
11:00—Jeff Davis, Hobo King
11:15—Slumber Music (NBC)
11:30—Vincent Lopez Orchestra (NBC)

Doodlesocker Dribbles

By SIDNEY TEN EYCK

I often sit and wonder, sit and think and ponder, tap my dome as in the days of yore. (Apologies to Kipling.) I was wondering what happened to Thundering Thorgeron on the Lucky Strike fracas. I guess he got a sore throat.

There's a tenor on one of the networks whose style of delivery is thoroughly disliked by most of the male listeners. With the females, however, it's quite the opposite. They palpitate whenever he croons. —So, a cigar company sponsors him. Tie that.

Did you ever hear about the time Bradley Kincaid made a forced

Network Programs

—Amos 'n' Andy. (NBC) wenr wmaq kstp whas
11:15—Toscha Seidel, violin. WABC wadw wlap wovo wbbm wkrc
—Jesse Crawford, organ. WFAF
—Price Albert Quarter-Hour: Alice Joy, with Orchestra. (NBC) whas wenr wapi
11:30—Tito Coral, South American baritone. WJZ wmaq wenr
—Don Redman's Orchestra. WABC
—Vincent Lopez and Orchestra. WFAF wjw wcky wgy
—Camel Quarter-Hour: Morton Downey, Tony Wons, orchestra. (CBS) wgn wovo

33
CENTS
Is All
You Pay
For the
Original
Steamboat
Boat Store
o'ee
CONSOLIDATED BOAT STORE
326 MAIN, CINCINNATI, OHIO

WLW (428m.—700 kc.)

6:30 A. M.—International Fiddlers
7:00—Physical Exercises
7:15—Talent Bureau Program
7:30—Organ, Arthur Chandler, Jr.
7:45—Jolly Bill and Jane (NBC)
8:00—Morning Devotions
8:15—Phil Cook, the Quaker Man (NBC)
8:30—Talent Bureau Program
8:45—Physical Exercises
9:00—Child Care and Training, Dr. Ada Arlitt
9:15—Ohio Federation of Woman's Club
9:30—Beautiful Thoughts (NBC)
9:45—WLW Mail Bag
10:00—Live Stock Reports
10:10—Maltine Announcement
10:15—A. & P. Orchestra
10:30—Colonel Goodbody, food talk (NBC)
10:45—Marley Personality Perfumes
11:00—Talent Bureau Program
11:15—Talk on Mouth Hygiene
11:25—Ramona, piano solos
11:35—River Reports
11:45—Sweetheart Program (NBC)
Noon—Talent Bureau Program
12:15 P. M.—Pat Barnes in Person (NBC)
12:30—Gibson Orchestra, Kay Kayser
12:45—Markets. Live Stock Reports
1:00—National Farm and Home (NBC)
1:30—Netherland Orchestra: Henry Busse
2:00—Ohio School of the Air
3:00—Pat Harrington, tenor
3:15—"The Washington Conference on the Cause and Cure of War," by Mrs. Carrie Chapman Catt (NBC)
3:30—Louis Johnen, baritone: "Art Songs"
3:45—Varsity Quartet
4:00—A. & P. Orchestra
4:30—Organ Matinee
4:45—The Chatter
5:00—Southern Singers
5:15—Mouth Health (NBC)
5:30—The Singing Lady (NBC)
5:45—Little Orphan Annie (NBC)
6:00—Old Man Sunshine
6:15—American Legion Talks
6:18—Netherland Orchestra: Henry Busse
6:30—Dr. Glenn Adams' Dog Talk
6:45—Lowell Thomas (NBC)
7:00—Amos 'n' Andy (NBC)
7:15—Gibson Orchestra: Kay Kayser
7:30—International Blue Flame Hour
8:00—"Tax Lobbying and the Freedom of the Air," by Fiorello La Guardia (NBC)
8:15—Oldsmobile Melody Speedway
8:30—Jack Frost Melody Moments (NBC)
9:00—Sherlock Holmes Adventure (NBC)
9:30—Dutch Masters: Walter Scanlon, Billy Murray, Marcella Shields (NBC)
10:00—Life Savers Reporter
10:15—Greystone: Cherniavsky Orchestra
10:45—Bob Newhall Sports Slides
11:00—Van Camp Program
11:30—Greystone: Cherniavsky Orchestra
Midnight—Henry Busse's Orchestra
12:30—Gibson Orchestra, Kay Kayser

landing? He was returning from a theater engagement late in the morning. He had driven all night and along about four o'clock in the morning the charms of Morpheus o'ertook him. He awoke one minute later with his car in a farmer's yard and wearing about eight feet of wire fence around his neck. The farmer was one of his public and made him sing a song—fence and all.

Just the same he's all man. He refuses to wear spats. To my notion, a mountain boy with spats on is akin to a sailor on horseback.

Comes another wild steer from Texas. Blayne Richards joined the fraternal order of Crosley Announcers last week. Mearle Tucker who preceded him by a couple of months is the other. Texas must be a pretty good state after all.

When this disconnected outline of ancient history goes to press, the undersigned and Bob (Bottlenose) Burdette will either be working for the Cotton Queen Show Boat permanently or driving sheep down Colerain Avenue. Filling the spot voided by Kink and Dink is a tough nut to crack. Or maybe I should stay in vogue and say nert.

Aw nertz,
SIDNEY TEN EYCK.

Network Programs

11:45—Lew White, organ. WJZ wenr
Midnight—Ralph Kirby, songs. WFAF wgy wenr wapi
—Eddie Duchin Orchestra. WABC wkrc
—Piano Moods: Lee Sims, piano; Ilo May Bailey, songs. WJZ kdka wenr wjr
12:05 A. M.—Coon Sanders Orchestra from Hotel New Yorker. WFAF wgy wapi wenr
12:15—Larry Funk's Orchestra. WJZ wjr wgar
12:30—Charlie Agnew's Orchestra. WFAF
—Benny Kyte's Orchestra. WJZ wgar
—Art Krueger's Orchestra. WABC wcco wbbm wkrc wadw wlap wkrc
1:00—Cafe de La Paix Orch. WABC
1:30—Roseland Ballroom Orch. WABC

THIS IS EARLE'S HYPO-COL Broadcasting

Tune in you Weak, Sickly, Run-down, Tired Folks—and learn how to tone up your energy and strength, gain rosy cheeks and rugged health.

Wonderful Earle's Hypo-Col contains natural, organic iron for your blood, hypophosphites for your nerves, cod liver extract and vitamins B, C and G for strength, energy, vigor, endurance and normal weight.

The good news about Hypo-Col is broadcast over Stations WKRC and WCKY every day except Sunday. And delicious, cherry-flavored Earle's Hypo-Col is sold by all druggists.



COMPLETE PROGRAMS FOR THURSDAY, JANUARY 28, ON THIS PAGE

WSAI (225m.—1330 kc.)

8:00 A. M.—Gene and Glenn (NBC)
8:15—M. Cormick Fiddlers
8:45—WSAI Morning Dance Concert
9:15—Knox Sparkling Music (NBC)
9:30—Popular Musicale
10:00—Mrs. Lake's Radio Column (NBC)
10:15—Musical Forum
10:45—Western Clock Program (NBC)
11:00—Popular Music
11:15—Radio Household Institute (NBC)
11:30—Dance Selections
Noon to 12:15—G. E. Home Circle (NBC)
12:50:1:00—Live Stock Reports
3:00—Woman's Radio Review (NBC)
4:00—Mona Motor Organ Recital
4:30—Crosley Dealers' Salute
4:45—Concert Program
5:00—Travel Talk
5:15—Skippy (NBC)
5:30—Celebrated Compositions
5:45—Listerine: Russ Columbo (NBC)
6:00—Memory Hour
6:25—Better Business Bureau Talk
6:30—James G. McDonald (NBC)
6:45—Stebbins Boys (NBC)
7:00—Vermont Lumberjacks (NBC)
7:15—Campbell Soup Program (NBC)
7:30—Prince Albert Program (NBC)
7:45—The Trials of the Goldbergs (NBC)
8:00—Fleischmann Hour: Rudy Vallee's Connecticut Yankees; Ray Perkins; Burns and Allen (NBC)
9:00—Pan-American Concert (NBC)
9:30—Sherlock Holmes Adventures (NBC)
10:00—Lucky Strike Dance with Walter Winchell (NBC)
11:00—Gibson Orchestra: Kay Kayser

Network Programs

6:00—Waldorf-Astoria Orchestra. WEAf wjw whas wtam (on 6:05) wjw
—Raising Junior: domestic skit, WJZ wgar wjr kyw
wadc wch wspd wlap wcco wkrc
—Tito Guizar, Spanish tenor. WABC
6:15—Peter van Steeden Orchestra. WJZ wjw
—Hotel Bossert Orchestra. WABC wlap
—Skippy, children's program. (NBC) wjw
—Gruen Answer Man. WJZ
6:30—The World Today: "Silver—An International Problem," James G. McDonald. WEAf wjw wsa wmaq
—Connie Boswell, songs. WABC wspd wlap wfbm wcco
—Old Songs of the Church. WJZ
—Peter van Steeden Orch. (NBC). KYW
6:45—Lowell Thomas. WJZ kdka wlv
—The Stebbins Boys, comedy sketch. WEAf wsa wgy wtam wjw
—Frank Stretz Orchestra. WABC wbbm
—Little Orphan Annie (NBC). WENR
7:00—Vermont Lumberjacks: Male Quartet. WEAf wgy wjw wsa wjw
—Amos 'n' Andy. WJZ kdka wlv wjw
—Wrigley: Myrt and Marge. WABC wkrc kmox wadc wjw
7:15—Tastyest Jesters: vocal trio. WJZ kdka wgar wjw
—Cremo: Bing Crosby. WABC wadc wkrc wch wspd
—Campbell Orchestra. WEAf wgy wtam wsa wjw

F. & H. CAPACITY AERIAL



Price \$1.00
Every Instrument Tested on Actual 1127 Mile Reception
A LARGE NUMBER ARE IN USE BY GOVERNMENT, IN NAVY HOSPITAL.
The F. & H. Capacity Aerial Eliminator has the capacity of the average 75-foot aerial, 50 feet high. It increases selectivity and full reception on both local and long distance stations is absolutely guaranteed. It eliminates the outdoor aerial along with the unsightly poles, guy wires, mutilation of woodwork, lightning hazards, etc. It does not connect to the light socket and requires no current for operation. Installed by anyone in a minute's time and is fully concealed within the set. Enables the radio to be moved into different rooms, or houses, as easily as a piece of furniture. WE PREDICT THIS TYPE OF AERIAL WILL BE USED PRACTICALLY ENTIRELY IN THE FUTURE. 8,000 dealers handle our line. Dealers! Over 80 leading jobbers carry our line or order sample direct. Write for proposition.

— Send coupon it protects you —
Name
Address
City State
Send one F. & H. Capacity Aerial with privilege of returning after 3-day trial if not satisfactory, for which enclosed find ☐ check ☐ M. O. or dollar bill, or send ☐ C. O. D. ☐ Send Literature. ☐ Dealer's proposition.
F. & H. RADIO LABORATORIES
FARGO, N. DAK., DEPT. 25

WFBE (250m.—1200 kc.)

7:00—Break of Day
7:15—Musical Clock
8:15—Birthday Program
8:30—Morning Concert
9:00—Our Daily Thought
9:15—Dulcy Markham, the Mountain Girl
9:30—Concert Hour
9:45—WFBE Women's Radio Hour
10:05—Dot Bright Sayings
10:20—Studio
10:35—WFBE-RKO Theatre Party
10:50—Anita Auch, delectian
11:00—Happiness Club
11:15—Morning Serenade
11:30—Housewives' Frolic
11:45—Dry Ridge Health Hints
Noon—Around the Town with Frank and Larry
12:30 P. M.—Sara Drucker
12:45—Luncheon Musicale
1:00—Studio
1:15—Story Telling Time
1:30—Day Dreams
1:45—Frank Brandstetter
2:00—Studio
2:30—Ralph Pinkston
2:45—Musical Silhouettes
3:00—Studio
3:15—The Old Sarg., U. S. Army Prog.
3:30—Prof. Briel
4:00—Vocal Varieties
4:15—Tea Time Tunes
4:30—Royal Troubadours
4:45—Studio
5:00—Central Vine Street Business Men
5:15—The Pirates Club
5:30—Musical Interlude
5:45—Murdoch Williams
6:00—Musical Memories
6:15—Studio
6:30—Sonada Sports Forecaster: Harry Hartman
6:35—Bag and Baggage
6:45—Max Fisher's Californians
7:15—Post Question Box
7:30—Sports Review, Harry Hartman
7:45—Dr. Theobald and Wonder Dog
8:15—Covington and Hersh
8:30—Bill Holland's Melodians, La Vista
8:45—Kentucky Post Program
9:00—The Lucky Boys
9:15—Western Hills Program
9:30—WFBE Players
10:00—Max Fisher's Californians from Club Chatter Box
10:30—Bill Holland's Melodians, La Vista

NETWORK PROGRAMS

7:30—Prince Albert Quarter Hour: Alice Joy with Orchestra. WEAf wgy wtam wsa
—Kaltenborn Edits the News. WABC wkrc wkc whk wfbm wbbm kmox wadc wcco
—Jane Froman, songs. WJZ wjw
7:45—Famous Fallacies of Business. WJZ wgar wls wjw
—Camel Quarter Hour: Morton Downey, Tony Wons. Orchestra. WABC wkrc wadc wch wlap wcco kmox
—The Goldbergs. WEAf wjw wgy wtam wsa wjw
8:00—Rudy Vallee—Fleischmann Hour: WEAf wgy wben wtam wjw wsa wmaq whas
—Linit: The Bath Club, interview, male quartet, orchestra. WABC wadc wch wlap wfbm wcco wkrc
—Dixie Spiritual Singers. WJZ kdka wls wjw
8:15—Rin Tin Tin Thriller. WJZ kdka wgar wlv wjw
—Sterling Products: Abe Lyman's Orchestra. WABC wkrc whk wgn wspd wcco kmox
8:30—La Palina—Kate Smith, songs. WABC wadc wkrc whk wch wspd wlap kmox wcco
—Golden Blossoms. WJZ

I am in Pain
I cannot sleep—I am so nervous.
You are? What a pity!
May we suggest that you investigate the benefit the multitude of chronic sufferers have derived with the use of the nationally famous
"MAGNETIC FLUX" THERONOID
Descriptive literature on request. Office or home demonstration given without obligation.

311 Lyric Theatre Bldg.
MAIn 5679 Cin., O.

WKRC (545m.—550 kc.)

6:45 A. M.—Sunrise Worship
7:45—Gladys Catron, Organist
8:00—Hamilton Business Hour
8:15—Hodges Brothers, mountain songs
8:30—Pyol Program: The Sizzlers
8:45—Studio
9:00—Jean West Shopping Talk
9:15—Wilma-Bi-Co-Late Program
9:30—Consolidated Merchants Program
10:00—Dr. Copeland—Health Talk (CBS)
10:15—Machine Age Housekeeping (CBS)
10:30—Bo-Peep Program
10:45—Barbara Gould Beauty Talk (CBS)
11:00—Morning Moods (CBS)
11:15—Acme Sunshine Melodies
11:30—Weather; Lange Time
11:33—Woman's Hour: Tremlette Tully
Noon—S. C. Johnson and Son Program
12:05 P. M.—Skip and Step
12:22—Studio
12:30—Cincinnati Merchants' Program
1:00—Farm Network Program (CBS)
1:30—Julia Hayes Household Hints
2:00—Aunt Jemima Songs (CBS)
2:15—Anne Leaf, organ (CBS)
2:30—American School of the Air (CBS)
3:00—La Forge Berumen Musicale (CBS)
3:30—Rhythm Kings (CBS)
3:45—Virginia Arnold, pianist (CBS)
4:00—U. S. Army Band (CBS)
4:30—Geo. Hall's Orchestra (CBS)
4:45—Steinberg Program
5:00—Ross Gorman's Orchestra (CBS)
5:30—Cincinnati Trade School: Piano
5:45—Lucky Kids (CBS)
6:00—Pat Gillick, organ
6:15—Sports Review; Stocks
6:30—Studio
6:45—A. O. Rust: Happy Feet
6:59—Lange Time Signal
7:00—Wrigley—Myrt and Marge (CBS)
7:15—Cremo—Bing Crosby (CBS)
7:30—Kaltenborn Edits the News (CBS)
7:45—Camel Quarter Hour: Morton Downey, Tony Wons (CBS)
8:00—Linit: The Bath Club (CBS)
8:15—Abe Lyman Orchestra (CBS)
8:30—La Palina—Kate Smith (CBS)
8:45—Angelo Patri—"Your Child" (CBS)
9:00—Vapex—Mills Bros. (CBS)
9:15—Berry Crafters
9:30—Love Story Program (CBS)
10:00—Hart, Schaffner & Marx, with Edwin C. Hill (CBS)
10:30—Chesterfield: Shilkret's Orchestra, with Alex Gray, baritone (CBS)
10:45—Jos. Koehne Sons
10:50—Gibson Optical; Studio
11:00—Time; Weather; Sports Review
11:15—Horseshoe Gardens: Cliff Burns
11:45—George Olsen's Orchestra (CBS)
Midnight—Guy Lombardo's Orchestra (CBS)

NETWORK PROGRAMS

8:45—Sisters of the Skillet. WJZ kdka wgar wlv wls
—Angelo Patri, "Your Child." WABC wadc whk wkrc wgn wspd wcco kmox wcco
9:00—Vapex: Mills Brothers. WABC wadc wcco wfbm wkrc whk wspd
—Pan-American Concert. WEAf wsa wgy wtam kyw
—Blackstone Plantation: Julia Sanderson, Frank Crumit, Orchestra. WJZ kdka wjw
9:15—Mennen: Ted Husing, Irene Beasley, Freddie Rich Orchestra. WABC wgn wcco kmox wspd wadc
9:30—Love Story Hour. WABC wadc whk wkrc wgn wspd wcco kmox
—Adventures of Sherlock Holmes. WEAf wgy wben wtam wjw wsa wjw
—Maxwell House Ensemble: tenor, male quartet, orchestra. WJZ kdka wjw wlv kyw whas
10:00—Hart Schaffner & Marx Trumpeters. WABC wadc whk wkrc wspd wcco kmox wlap wjw
—Lucky Strike Dance Hour, with Walter Winchell. WEAf wgy wtam wjw wsa wjw
—A. & P. Dance Gypsies: Harry Horlick, director; Frank Parker, tenor. WJZ kdka wgar wlv wmaq
10:30—Clara, Lu and Em, gossip. WJZ kdka wgar wjw kyw wjw
—Chesterfield: Alexander Gray, Nat Shilkret Orchestra. WABC wkrc wbbm wcco wfbm whk wspd
10:45—Jack Miller and his Orchestra. WABC wadc
—Wrigley: Myrt and Marge. (CBS) wbbm wcco wlap
—Paris Night Life. WJZ kdka wgar kyw wjw

WCKY (202m.—1490kc.)

7:00 A. M.—Morning Melodies
7:30—Asher Sizemore and Little Jimmy
7:45—Kapua's Hawaiians
8:00—Organ Music
8:01—Kentucky Mountaineer
8:15—Morning Devotions (NBC)
8:30—Cheero (NBC)
9:00—Waltzes, old and new
9:30—Band Music
9:45—Tunes in Blue
10:15—Vocal Varieties
10:30—Classic Hour
10:45—Magic Foamers
11:00—Mrs. A. M. Goudiss (NBC)
11:15—Musical Novelties
11:30—Cumberland Crooners
Noon—Luncheon Concert
12:15 P. M.—Johnson Wax Program
12:20—Musical Interlude
12:25—Live Stock Quotations
12:30—National Farm and Home (NBC)
1:30—Organ Reveries
2:00—Afternoon Concert
2:15—Moods in Indigo
2:30—Music Masters
3:00—Siesta Musicale
3:15—Matinee Melodies
3:45—Kapua's Hawaiians
4:00—Popular Requests
4:15—Tantalizing Tunes
4:45—Rhythm and Rhyme
5:00—"Snow" Drifts, Jack Snow
5:15—Asher Sizemore and Little Jimmy
5:30—Story Book Time
5:45—Radio and Television Institute
6:00—Tommy and Willie
6:30—To be announced (NBC)
6:45—Late Dance Tunes; News
7:00—Amos 'n' Andy (NBC)
7:15—Tastyest Jesters (NBC)
7:30—Jane Froman and Orchestra (NBC)
7:45—Famous Business Fallacies (NBC)
8:00—Dixie Spiritual Singers (NBC)
8:15—The Beggars
8:30—"It Pays to Advertise"
9:00—Blackstone Plantation (NBC)
9:30—Tommy Thomas Music, Club Royal
10:00—WCKY's Crackers
10:30—Clara, Lu and Em (NBC)
10:45—Paris Night Life (NBC)
11:00—Grady Hodges and Alma Ashcraft, songs
11:15—Slumber Music (NBC)
11:30—Blue Rhythm Boys Orch. (NBC)
11:45—Cab Calloway Orchestra (NBC)

NETWORK PROGRAMS

11:00—Slumber Music: String Ensemble. WJZ
—Don Redman's Connie's Inn Orchestra. WABC
—Cremo: Bing Crosby. (CBS) wgn wcco wfbm kmox wlap
—Lew Conrad's Orch. WEAf wgy
—Amos 'n' Andy. (NBC) whas wjw kstp wmaq
11:15—Howard Barlow and Columbia Symphony Orchestra. WABC wjw wch wadc wlap
—Prince Albert Quarter-Hour: Alice Joy, with orchestra. (NBC) whas wjw
—Lowell Thomas (NBC). WMAQ
11:30—Jesse Crawford, organ. WJZ wjw
—George Olsen's Orchestra. WABC
—Camel Quarter-Hour: Morton Downey, Tony Wons, orchestra. (CBS) wgn wjw
—Tito Coral, baritone. WJZ wmaq
11:45—Mills Orchestra. WEAf wgy wjw wjw
—Lew White, organ. WJZ wjw
Midnight—Piano Moods: Lee Sims, piano; Ilo May Bailey, songs. WJZ kdka wjw wjw
—Ralph Kirby, tenor. WEAf wjw wjw
—Guy Lombardo Orchestra. WABC wkrc wcco whk wlap
12:05 A. M.—Coon Sanders' Orchestra. WEAf wjw wjw
12:15—Earl Hines' Orchestra. WJZ wjw wgar wjw
12:30—Larry Funk's Orchestra. WJZ
—Louis Panico Orchestra. WABC wbbm wcco whk wlap
—Charlie Agnew's Orchestra. WEAf
1:00—Noble Sissle's Orchestra. WABC
1:30—Roseland Ballroom Orch. WABC

WLW (428m.—700 kc.)

6:30 A. M.—International Fiddlers
7:00—Physical Exercises
7:15—Bradley Kincaid
7:30—Organ Program, Arthur Chandler.
7:45—Jolly Bill and Jane (NBC)
8:00—Morning Devotions
8:15—Phil Cook, the Quaker Man (NBC)
8:30—Talent Bureau Program
8:45—Physical Exercises
9:00—Health Talk, Dr. Carl Wiltzbach
9:15—Backstage in Radio
9:30—Beautiful Thoughts (NBC)
9:45—What's New?—Talk on new household articles by Mildred Mayberry
10:00—Live Stock Reports
10:10—Maltine Announcement
10:15—A. & P. Orchestra
10:30—Colonel Goodbody (NBC)
10:45—Davis Mystery Chef (NBC)
11:00—Louis John Johnen, songs
11:15—Mouth Hygiene, talk
11:25—WLW Stars, Ramona
11:45—River: Weather; Time
Noon—Bradley Kincaid
12:15 P. M.—Pat Barnes in Person (NBC)
12:30—Gibson Orchestra, Kay Kayser
12:45—Markets; Live Stock Reports
1:00—National Farm and Home (NBC)
1:30—Netherland Orchestra: Henry Busse
2:00—Ohio School of the Air
3:00—Pat Harrington, tenor
3:15—Talk by Thomas L. Stix (NBC)
3:30—Singing Violin
3:45—Sisters Three
4:00—A. & P. Orchestra
4:45—The Chatter
5:00—Brazilian Coffee (NBC)
5:30—The Singing Lady (NBC)
5:45—Little Orphan Annie (NBC)
6:00—Old Man Sunshine
6:15—Netherland Orchestra: Henry Busse
6:30—Radio News Reel of Hollywood
6:45—Lowell Thomas (NBC)
7:00—Amos 'n' Andy (NBC)
7:15—Ungentine Program
7:30—Centerville Sketches
7:45—Tangee Musical Dreams: Henry Thies Orchestra
8:00—Florists' Program
8:15—Rin-Tin-Tin Thriller (NBC)
8:30—Netherland Orchestra: Henry Busse
8:45—Sisters of the Skillet
9:00—Earle Ferris Nurserymen
9:30—Maxwell House Ensemble (NBC)
10:00—A. & P. Dance Gypsies (NBC)
10:30—Seger Ellis and Orchestra
10:45—Bob Newhall Sport Slices
11:00—Van Camp Program
11:30—Crosley Theatre of the Air
Midnight—Netherland Orchestra: Henry Busse
12:30—Gibson Orchestra, Kay Kayser

WSMK

(1380 kilocycles)

HIGHLIGHTS

SUNDAY, JANUARY 24

12 Noon. The Father Flanagan's Boys' Home program is heard at this new time. The half hour is made up of music by a band of 48 homeless boys, the Celebrity Duo and organ, and talks by "Johnny, the Gloom Killer" and Father Flanagan.

12:30 p. m. When Tito Pandely, late of NBC and RKO fame, sings into the Dayton mike, listeners will hear Spanish songs direct from Pandely's native land, and announcements in Spanish, Greek, Italian, and English.

TUESDAY, JANUARY 26.

1:45 p. m. The Dental Directory is a new weekly feature giving practical information of dentistry. The speaker is Dr. Robert R. Gilbert.

WEDNESDAY, JANUARY 27.

4:45 p. m. Talented young pupils of the Dayton Institute of Music are heard in a new series of programs, broadcast at this time also on Monday and Friday.

RADIO SERVICE

Complete inspection by an expert in your home. Our service work guaranteed ninety days. Replacements made with original parts. Don't take chances. Call

50c

SCHWARTZ RADIO SERVICE SHOP

ESTABLISHED 10 YEARS
Liberty and Race, Cincinnati, Ohio, CHerry 5946

BOYS WANTED

Sell RADIO DIAL and make money. It's easy. Other boys are buying many things with the money they earn selling this interesting weekly of programs and radio news. Why don't you?

WARGO NEWS CO.

629 Central Ave.
Hamilton, Ohio

PROGRAMS FOR FRIDAY, JANUARY 29, ON THIS PAGE

WSAI (225m.—1330 kc.)

8:00 A. M.—Gene and Glenn (NBC)
8:15—McCormick Fiddlers
8:45—Morning Dance Concert
9:15—Odas Mattox
9:30—Popular Musicale
10:00—Mrs. Blake's Radio Column (NBC)
10:15—Musical Forum
10:45—Betty Crocker (NBC)
11:00—Music Appreciation Hour (NBC)
Noon to 12:15—G. E. Home Circle (NBC)

LETTER BOX

(Continued from page 6)

p. m. Tuesday, February 4, on WLW. You can obtain advance programs of the Ohio School of the Air by writing to B. H. Darrow, director, State House Annex, Columbus, O.

H. E. Clark, Swastika, Ont., Can.: I have asked the Service department at the Crosley Radio Corporation to send you information about their Musicale which may assist in operating it the way you desire.

Marie M. Bailey, Cincinnati, O.: Tony Wons is old enough to have a daughter about 12 years old. He is in the neighborhood of 40—one side or the other.

Mrs. F. S. of Cincinnati thinks Mary Brown sings better when her husband, Robert Brown, announces her program at WLW. Sorry, Mrs. F. S., about that picture. We haven't yet been able to overcome our modesty. After all, Radio Dial is a paper featuring radio entertainers and your editor hasn't been a radio entertainer since she was woman's hour director at WLW in 1927.

Billie and Virginia Simmons,

WFBE (250m.—1200 kc.)

7:00 A. M.—Break of Day
7:15—Musical Clock
8:15—Birthday Greetings
8:30—Morning Concert
9:00—Our Daily Thought
9:15—Hy C. Geis, organ
9:45—Morning Melodies
10:05—Dot "Bright Sayings" Program
10:20—Studio
10:35—WFBE RKO Theatre Party
10:50—Mrs. Evans' Advice
11:00—Mary and John, sketch
11:15—Parker Keith
11:30—Housewives' Frolic
11:45—Dry Ridge Health Hints
Noon—Around Town with Frank & Larry

Alexandria, Ind. A picture of Sidney Ten Eyck and Bob Burdette is in this issue. A picture of Sidney alone was in RADIO DIAL several weeks ago.

Roy Paul, Cincinnati: "Baron" Lloyd is one of the Skip and Step team at WKRC. We'll tell him you think his singing voice is improved. "Professor" Miller is now touring several states and broadcasting for a commercial concern.

Grace Gebhard, Ft. Wayne, Ind.: Your request has been sent to WLW.

E. B. W., Carlisle, Ky.: Be of good cheer. The picture you want is in the making.

After spending several months redecorating and furnishing a house at Hempstead, L. I., where he expected to spend most of his free time, Arthur Allen, one of the Stebbins Boys, has been obliged to move back to New York as his last daily broadcast is now scheduled for 1 a. m. for Pacific Coast stations.

WKRC (545m.—550 kc.)

6:45 A. M.—God's Bible School, Sunrise Worship
7:45—Gladys Catron, organist
8:00—Around the Clock
8:15—Hodges Brothers, mountain songs
8:30—Pyol Program: The Sizzlers
8:45—Old Dutch Girl (CBS)
9:00—Jean West Shopping Talk
9:15—Wilmack-Bi-Co-Late
9:30—Consolidated Merchants
10:00—Grant Trio (CBS)
10:15—Lange Time; Weather; Studio
10:18—Woman's Hour—Tremlette Tully
10:45—Don and Betty (CBS)
11:00—Fitch Professor: Jack Brooks (CBS)
11:15—Queen City Rug Makers
11:30—The Captivators (CBS)
11:45—Jane Grey and Kampf Jeweler Artists
Noon—S. C. Johnson & Son Program

TOTTENHAM TERRIERS

Dr. Glenn Adams, whose Wednesday night (6:30) dog talks at WLW are followed by thousands of dog lovers, is starting a new breed of dogs. He told his audience the other night about a "Tottenham Terrier" named "Dan'l Boone." The dog became a Tottenham Terrier because its

WCKY (202m.—1490kc.)

7:00 A. M.—Alarm Clock Melodies
7:30—Asher Sizemore and Little Jimmy
7:45—Kapua's Hawaiians
8:00—Organ Eye-Openers
8:15—Morning Devotions (NBC)
8:30—Cheerio (NBC)
9:00—Waltzes, Old and New
9:30—Band Music
9:45—Tunes in Blue
10:15—Dr. Copeland (NBC)
10:30—Classic Hour
11:00—Music Appreciation Hour (NBC)
Noon—Luncheon Concert

WLW (428m.—700 kc.)

6:30 A. M.—International Fiddlers
7:00—Physical Exercises
7:15—Talent Bureau Program
7:30—Arthur Chandler, Jr., organ
7:45—Jolly Bill and Jane (NBC)
8:00—Morning Devotions
8:15—Phil Cook, the Quaker Man (NBC)
8:30—Talent Bureau Program
8:45—Physical Exercise
9:00—Rumford School of Cookery
9:15—Talent Bureau Program
9:30—Beautiful Thoughts (NBC)
9:45—Wilson Premium Man
10:00—Live Stock Reports
10:10—Maltine Announcement
10:15—A. & P. Program
10:30—Colonel Goodbody (NBC)
10:45—Stokely Program (Contest)
11:00—Music Appreciation Hour (NBC)
Noon—Tuxedo Fiddlers

master wanted to hide the bar sinister in its ancestry. Dan'l's mother was a Poodle, and his father was a hitchhiker, and Dan'l looked like a little white Airedale. Dr. Adams suggests that "all little white dogs with Terrier appearance and an accidental ancestry be called Tottenham Terriers."

In addition to writing and acting in The Goldbergs (WSAI 7:45 p. m. daily), Mrs. Gertrude Berg attends Columbia university, keeps house for her husband and two children, is writing a play for Broadway production, and several scripts for "talkie shorts." In her spare time she dabbles in portrait painting.

RADIO SPECIALISTS

These repair service shops, as well as others advertising in this issue, have been investigated by Radio Dial and are economical as well as efficient. Get the most out of your radio by keeping it in perfect working condition.

AVONDALE

24 HOUR SERVICE

7 Days Per Week

Expert
Radio
repair

Low Rates — Guaranteed Work

JAMES FRENKEL LEON BASS
Call **AVon 3095**
CINCINNATI, OHIO

LITY

Expert Radio Inspection Service
50c

Phone CHerry 5230

ABC RADIO SALES
AND SERVICE

1511 Race St., Cincinnati, Ohio

RADIO REPAIRING

We guarantee our work
Prompt, Courteous Attention
CALL CHERRY 3745
A. M. Wagner Radio Co.

M. & T. RADIO SHOP
AL. THREM, Prop.

RADIO TESTED IN YOUR HOME
Repairing Reasonable Satisfaction Guaranteed

As Near As Your Telephone

1735 Elm (at Findlay Market)
Parkway 4573

BRUNSWICK

Complete parts and repair service. All makes expertly repaired and guaranteed.

QUEEN CITY RADIO SERVICE CO.
626 Broadway
Phone CHerry 2440

SERVICE
on ALL Makes

E. GROSSMAN
Parkway 3246
Avon 7893 after 5 p. m.

CITY

RADIO REPAIRING

Complete inspection in your home. Our service work guaranteed. Replacements made with the best of parts. We have repaired when others failed.

45c

UPTOWN RADIO SHOP

68 EAST McMICKEN AVE.

Cincinnati's First Repair Shop

We aim to please. Satisfaction is our guarantee!

Established 13 years in
Cincinnati, Ohio

CHerry 7895

CITY

UNITED RADIO, INC.

1103 VINE STREET

"The House of a Million Parts"

We service and repair every make Radio.

CHerry 6531

COVINGTON

Supreme Radio Service

Guaranteed Service on All Makes
Open from 8 A. M. until 9 P. M.
We specialize in installation of
Automobile Radios

Dealer Service Solicited

1902 Madison Ave.
HEmlock 6644, Covington, Ky.

For Quick Radio Service
Call HEmlock 7748

JOHNSTON RADIO SHOP

29 East Seventh Street
Covington, Ky.

Expert Workmanship on All
Makes. Consult Us.

FAIRVIEW

We Repair It

Guaranteed
RADIO SERVICE

on all makes
Authorized Mazda Dealers

FIX-IT SHOPPE

2503 Fairview Ave., WEst 5470

NEWPORT

RADIO REPAIRING

by expert radio technician

Member Local No. 2

My work must please! You be the judge.

I use only the best tubes and parts.

J. C. ARROWOOD

214 W. 9th St., Newport, Ky.

Call SOut 2125

FREE

Your Radio Troubles Analyzed

Fallers Radio Repair

522 York Street, Newport, Ky.

SOut 6415

OAKLEY

Repairs Guaranteed
WE SERVICE ALL SETS

W. Tieman

Aerials Erected

OPEN EVENINGS

Dealer Service

2916 Markbreit, JEFF. 3962

PLEASANT RIDGE

Guaranteed Radio Repair Service

Expert work and only the best parts used. We also carry a complete line of Westinghouse radios, refrigerators and appliances. A call will bring prompt service.

HUBBELL RADIO SHOP

6087 Montgomery Rd., JEFF. 6961

For advertising rates in these

columns, call RADIO DIAL,

Parkway 5081.

Dayton Boys

Make Spending
Money Selling

Radio Dial

SEE

WILKIE NEWS CO.

125 S. Ludlow, Dayton, Ohio

CORRECT TIME
WKRC TWICE DAILY

COURTESY OF

Lange
JEWELER

435 VINE — CAREW TOWER

REMEMBER — YOUR GRANDMOTHER'S
WEDDING RING CAME FROM LANGE'S

FACTORY SALE!

Special—This Week Only

Latest 1932 Super-Heterodyne \$39⁵⁰

All the
Features
of Highest
Priced
Radios:

Pentode,
Variable-Mu,
Screen-Grid
Tubes—
Automatic
Volume Control—
Full Vision
Dial—
Balanced Unit—
Tone Control—
Static
Modulator—
Pre-Selector—
Low Current
Consumption—
Factory
Guarantee



Just as
Illustrated

9 Tubes

Complete
with 9 Tubes

11 Tubes
\$54⁷⁵

\$10⁰⁰

Down

10 Months
to Pay

FREE DELIVERY
FREE INSTALLATION
FREE SERVICE

Come Direct to Big Factory Showrooms!

Open 8 A. M. to 9 P. M. Daily During This Sale. Sunday, 9 to 5

MIDWEST RADIO CORP'N

America's big, old, reliable radio manufacturers—Established 1920

909-911 BROADWAY

Visit Our Factory!