

RADIO DOINGS

RED BOOK OF RADIO

5¢
WEEKLY

*The Radio Authority
of the
Pacific Coast*

*Madame
Louise
Homer*



*KFJ
and
KPO
October
24th*

Vol. IX

OCTOBER 24-30, 1926

No. 17

When
you find
this seal



on a new
RADIOTRON

you know that this tube has been tested, approved and passed by this organization as AAA1—that the dealer who uses this seal has been tested, approved and passed by this organization as AAA1—and that your purchase carries the triple security of Manufacturer, Distributor and Dealer approval.

In truth—"O.K."

**Kolster · Crosley
Brandes
Burgess Batteries
Radiotrons**

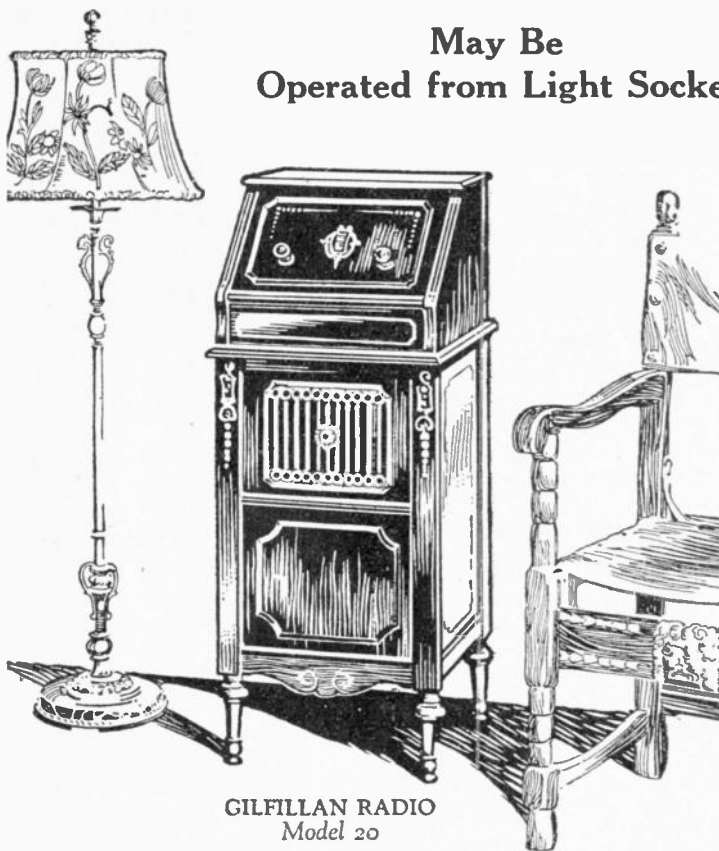
H. Earle Wright, Incorporated

123-129 Second Street
SAN FRANCISCO

415 East Eighth Street
LOS ANGELES

ONE DIAL Control,

May Be
Operated from Light Socket



GILFILLAN RADIO
Model 20

SIX tubes; shielded radio stages. Improved Neutrodyne. Built-in Rola Cone Speaker. Operated from light socket with battery eliminators or with usual batteries.

The Season's greatest Radio value, with all the best features in hand-carved Cabinet. See this and other new Gilfillan Sets at the dealers.

Sherman Clay & Co., Distributors

GILFILLAN RADIO

Made by GILFILLAN BROS. INC., 1815 Venice Blvd., Los Angeles, Cal.

HERE IT IS ENTIRELY NEW

S. L. F.--S. L. W. L. ARMO CONDENSER

With Micrometer Adjustment

Outstanding success of the season. It is acknowledged by Radio Engineers to meet all requirements. Adaptable to all sets, new or old, insuring perfect tuning.

Price
\$4.50

Armo

Capacity
.00035
.00045

**Low Minimum Capacity—Required Maximum Capacity for
Entire Broadcast Wave Band**

Micrometer adjustment allows accurate matching of capacities and inductances. No other balancing condenser or compensating devices need be used.

This adjustment is a feature found in no other manufactured.

If your dealer is unable to supply you, mail your orders to

ARMO RADIO LABORATORIES
(Manufacturers)

1666 Tarleton Street

Los Angeles, Calif.

GENERAL SALES AGENT

C. W. HILLS, Telephone HOLLYWOOD 2622

Radio Doings

LOS ANGELES
527-29 Van Nuys
Bldg.
Tucker 8468

Trade Mark Reg. U. S. Pat. Off.

SAN FRANCISCO
406 New Call Bldg.
Douglas 1388

"The Red Book of Radio"

HUBERT C. CHARLES
General Manager

H. C. CHARLES, Editor
N. E. BROWN, Technical Editor
MAJ. LAWRENCE MOTT, Signal
Corps, O.R.C., Associate Editor

CONGER and MOODY,
Sharon Building,
San Francisco Representative
J. W. HASTIE,
Eastern Representative

New York Office, 155 E. 42nd St., New York City

(Entered as second-class matter, Nov. 25, 1923, Los Angeles, Cal., Post Office, under Act of March 3, 1879.)
Copyright, 1926, by Horwood Publishing Co.

Issued Weekly. Five Cents a Copy. Two Dollars a Year. Canada and Foreign Countries, \$2.50 per Year.

Vol. IX Los Angeles OCTOBER 23, 1926 San Francisco No. 17

Grand Opera

DURING the past two weeks we have been royally entertained by the broadcasting of those two immortal operas, "La Traviata" and "Aida," by the Italian composer, Verdi; we are also soon to hear an air recital by that incomparable Madame Louise Homer. Surely wonderful treats.

There is no doubt but that most of us have been keenly thrilled, while others have taken these programs simply as a matter of fact.

Have we stopped to consider just how it is possible for this class of entertainment to be brought into our homes, entailing practically no expense on our part, and that radio entertainment is the cleanest form of amusement we enjoy?

In this Union of forty-eight States, with its six hundred or more broadcast stations, we pay no compensation whatever for radio entertainment, while some of our European neighbors are not so fortunate.

The broadcast stations through which you receive these wonderful programs represent an investment of thousands of dollars, both in installation and maintenance, and through them, as well as the sponsors of these programs, we are privileged to be so royally entertained.

We voice words of praise for the artistry displayed by the various radio entertainers; we appreciate the recent wonderful programs of grand opera and recitals as rendered by world-renowned artists.

In the vernacular of the stage, applause is music to the ears of the artists and the producers, but, sitting at our receiving sets, they are unable to hear this and the only way the artists, the broadcast station and the sponsor of these programs know that we do appreciate their efforts is through the medium of cards or letters of appreciation.

Show this appreciation TODAY not only to the artists themselves but to the broadcaster and sponsor, through whose efforts this entertainment has been made possible.

ONLY \$2.00 A YEAR

Have RADIO DOINGS mailed to your home every week. Fill out blank below. Either mail to us, or your dealer will be glad to take care of it for you. Please indicate whether NEW or RENEWAL.

HORWOOD PUBLISHING CO., 527 Van Nuys Bldg., Los Angeles,
406 New Call Building, San Francisco, California.

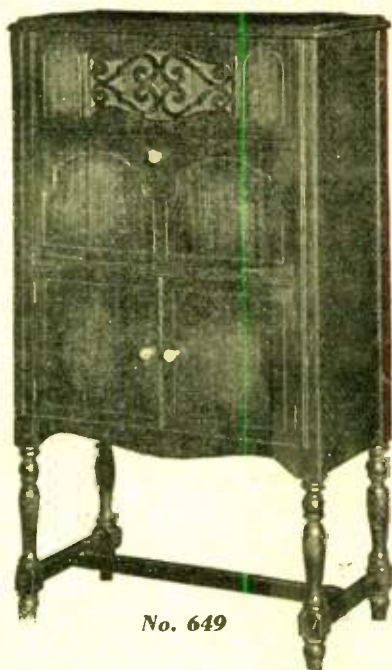
Gentlemen: I enclose \$2.00, for which send me RADIO DOINGS for one year.
NEW—RENEWAL.

Name _____

Address _____

McMILLAN FIVE OVER THE TOP

Quality and Price in One



No. 649

This beautiful two-tone Walnut console with built-in speaker and Utah unit with the incomparable McMillan Five Radio.

No. 649—\$105.00

Less Tubes and Batteries



No. 641

Low Boy Console

McMillan Five Radio in the beautiful two-toned Mahogany console. Built-in speaker and Utah unit.

No. 641—Price \$75.00

C. W. SMITH CO.

"The Home of Utah Speakers"

1125 Wall St.

Los Angeles, Calif.

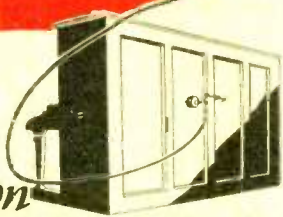
WEstmore 3291



Amazing New Invention! Use your Piano for your Radio's Loud Speaker!



*Perfect
Reproduction
of every Note in the Musical Scale*



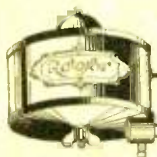
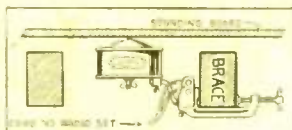
From all over the country praise pours in—from radio experts, manufacturers, musicians. "At last," they say, "the harsh, tinny noises that spoil most radio reproduction are eliminated!"

It IS amazing—for until you have heard the Rotofor Radio Piano Speaker you have no idea how clear, pure and mellow radio music can be. You hear high tones—low tones—many notes that ordinary speakers miss or muffle or distort. But

the big wooden sounding board of your piano reproduces EVERY note.

You can attach the Rotofor Speaker instantly to any piano. It doesn't injure or interfere with the piano in any way. It is invisible—out of the way—and does away with ugly horns. But most important is its marvelous tone.

You never heard anything like it. Ask your dealer to send one up to your home for a demonstration.



Mfd. by
International
Radio Corp.
145 Pacific
Electric Bldg.
Los Angeles



Rotofor

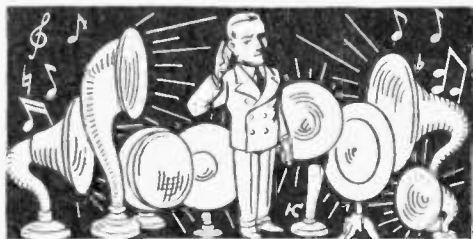
RADIO PIANO SPEAKER

Patents Pending

Made by the manufacturers of Rotofor—the Radio Simplified—One Dial Control—Five Tubes.

KEELER-WHITE CO.

211 S. San Pedro St.—MUTUAL 6279—Los Angeles
509 Mission St.—KEARNEY 1492—San Francisco
406 Occidental Ave., Seattle.



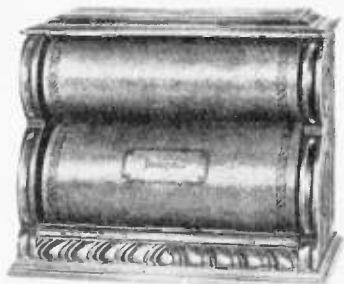
Maybe you're still looking
for the **PERFECT** speaker
If you really want
to **FIND** it, hear

The New **DICTOGRAND**
ROLL
SPEAKER

Made by

DICTOGRAPH PRODUCTS CORP.
New York City

Pacific Coast Representative
MARSHANK SALES COMPANY
735 Petroleum Securities Bldg.
Los Angeles
286 Chronicle Building
San Francisco



TRY it on your radio—with
your dealer's compliments.

Three models: *The DeLuxe*
(illustrated), \$27.50; the *Stand-*
ard, \$18; the *Tabouret*, \$41.

**HAVE
YOU A
PIANO?**

Then you're in luck! For the new **DICTOGRAND** Piano Unit will transform its perfect and costly sounding-board into a radio speaker of pleasing volume and rare clarity of tone. This unit is made for both upright and grand pianos.

Performance

"Just as good as a Stromberg Carlson" is a familiar phrase, but it deceives only those who fail to insist on a demonstration of the Receiver which has created the *standard of performance*. The Stromberg Carlson slogan, "Makers of voice transmission and reception apparatus for more than thirty years," is a guarantee of perfect radio performance.



No. 602 Universal Receiver, Art Console. 6-tube, totally shielded; dual control; equipped with voltmeter. American Walnut. Price, without accessories, \$360.

A Stromberg Carlson Dealer Franchise is invaluable. That's why you are assured of continued satisfaction.

Western Radio, Inc.

Wholesale Distributors for Southern California

CUNNINGHAM . STROMBERG CARLSON . EVEREADY

1224 Wall St.
Los Angeles

WEStmore
3338

80 DIFFERENT MAKES RADIO PARTS WHAT YOU WANT

Accuratune Dials
Acme Apparatus
Aero Coils
Aerovox Resistors
All American Parts
Amertran Transformers
Amperites
Amsco Condensers
Artco Coils
Baldwin Units
Benjamin Parts
Brandes Speakers
Branston Coils
Bremer-Tully Parts
C R L Resistances
Carborundum Crystals
Cardwell Parts
Carter Parts
CeCo Tubes
Chelton Condensers

Clarostats
Continental Condensers
Crescent Transformers
Daven Parts
De Jur Rheostats
De Luxe Cables
Dictogrand Speakers
Dubilier Parts
Eby Binding Posts
Ekko Clamps
Electrad Parts
Electrahot Irons
Formica Bakelite
Franco Batteries
General Radio Parts
Goodrich Rubber Panels
H-K Sodderdipt Lugs
Hammerlund Parts
Handy Chargers

KITS

Bremer-Tully Counterphase Six
Silver-Marshall S. C., Six and Shielded Six
Remler Transformer Unit for Infradyne
National Co. Browning-Drake Units
Harkness Two and Three Tube Kits

DEALERS: Park Next Door at Our Expense

RADIO SU

920 South Broadway

Wholesalers

OF THE BEST IN YOU CAN BUY IN LOS ANGELES 80

Hoosick Parts
Jefferson Transformers
Jones Multiplugs
Kelbrackets
Kellogg Parts
Kester Solder
Kodel Chargers
Kurz Kasch Dials
Lemco Transformers
Madison Moore Units
Marco Parts
Muter Parts
Naald Parts
National Co. Parts
Polymet Condensers
Precise Parts
Premier Parts
Raytheon Tubes
Remler Parts

Samson Transformers
Sangamo Condensers
Sensory Insulators
Signal Parts
Silver-Marshall Parts
Spaulding Panels
Sterling Meters
Stevens Tools
Testrite Hydrometers
Thordarson Transformers
Tobe Condensers
Tom Mack Crystals
Tower Speakers
Trimm Speakers
U S L Condensers
Victoreen Parts
Vesta Trickle Chargers
Weston Meters
X L Variodensers
Yaxley Parts

Eliminators and Trickle Chargers

All American Constant B

Acme E3, 180 volts Acme E1, 180 volts

Silite, Balkite and Acme Trickle Chargers

Vesta Trickle Chargers and Combination A Battery and Trickle

Tungar Trickle and Hobbs A Battery with Silite Trickle

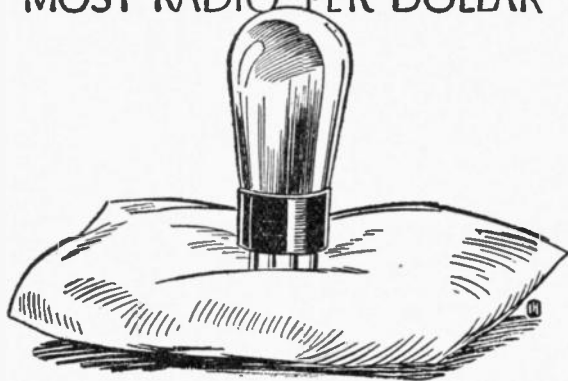
SEND FOR OUR LATEST CATALOGUE

PPLY CO.

VA. 6063

LOS ANGELES

MOST RADIO PER DOLLAR



CUSHIONED TUBE MOUNTING

As an example of the fine engineering which is a part of every King Radio we suggest you inspect the *Cushioned Tube Mounting* of the New King Sixty Line.

Each tube panel is mounted on specially-designed phosphor bronze springs, giving perfect cushioning for each tube.

In old-type radios, vibration caused by a passing trolley-car often set up tube-noises that spoiled perfect reception. Placing a loud speaker on the radio cabinet had the same effect ~~too~~.

The new King cushion tube-mounting minimizes all effects caused by mechanical interaction. It stops tube-noises due to outside vibrations. A seemingly small thing—but gets big results. It is typical of the care that characterizes every detail of the new King Line. See it at the Radio Show—and with it the new King Single Dial Station Selector, the new King Double-Cell Shield and the marvelous King Cabinet Work that is the talk of the whole radio industry.

Distributors for Los Angeles Territory:

THE BANTA COMPANY

1801 SOUTH HILL STREET
LOS ANGELES, CALIFORNIA

"Most Radio Per Dollar"

KING RADIO

For
CROSLEY
RADIOS

See
FRANK
RADIO

Downtown Headquarters for the
 Sensation of the 1927 Season

Have YOU seen the new Single Control?

Aside from specializing on Crosley Sets and Speakers, we carry a full line of reputable, standardized accessories such as

Majestic B Eliminators
Cunningham Tubes
Burgess and Eveready Batteries

and dependable, fully guaranteed merchandise at popular prices

Alltron Tubes \$.95
Everite B Batteries, 45-Volt (a good
battery made locally) \$2.65



FRANK RADIO CO.

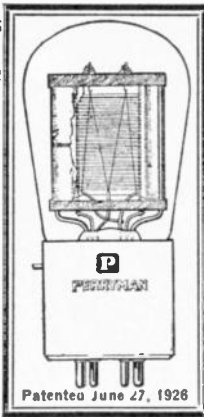
Factory Franchised Crosley Dealer

715½ South Main St.

Los Angeles, Calif.

EXPERT REPAIR DEPARTMENT

PERRYMAN RADIO TUBES



Patented June 27, 1926

Clear glass demonstrating tube, showing Perryman Patented Bridge

Type R.H. 199
Amplifier-Detector
Miniature Base
with short pins



Type R.H. 199
Amplifier-Detector
Adapter Base
with short pins



Type R.H. 199
Amplifier-Detector
New Standard
Base with
long pins



Type P.A. 120
Power Amplifier
New Standard
Base with
long pins



Type R.H. 201-A
Amplifier-Detector
New Standard base
with long pins



Type P.D. 200-A
Super-Sensitive
Detector New
Standard base
with long pins



Type P.A. 210
Super-power Amplifier
New Standard base
with long pins



Type P.A. 112
Power Amplifier
New Standard base
with long pins

A Complete Line!

A Revelation in Tube Construction. A Radio Vacuum Tube that is far superior to the old style tube. Due to its remarkable patented features

PERRYMAN TUBES

increases the sensitivity of your set, eliminates squeals and howls and give unheard of tone quality and volume.

*"Perryman Tubes for Distance
Without Distortion"*

Exclusive Wholesale Distributors

YALE
RADIO ELECTRIC CO.

1111 Wall Street
Westmore 3351

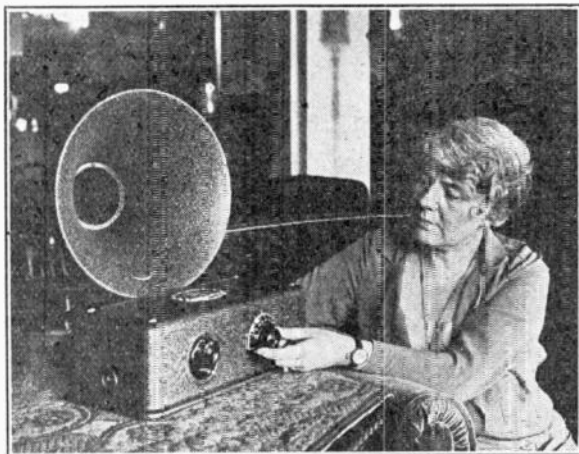
Madame Louise Homer in Air Recital

Of all the singers now before the public none has been in such constant demand to appear as Madame Louise Homer, who is to give a recital Oct. 24th over KFI, Los Angeles, and KPO. San Francisco.

It is through the efforts of Ray Thomas, Southern California Atwater Kent distributor, that Madame Homer will broadcast. Thomas spent much time and money making arrangements for her appearance, and it is fortunate, indeed, for radio listeners that he was able to secure this world-famous contralto at any time during the year.

famous organization. She has sung many times with the New York Philharmonic and New York Symphony, with the Chicago, Philadelphia, Minneapolis and Cincinnati orchestras, and with the younger orchestras of Detroit, Cleveland and San Francisco. Her last appearance in Los Angeles was with the Los Angeles Grand Opera.

In the last fifteen years it is reasonable to hazard the guess that Madame Homer has had more orchestra engagements than any other singer, and very few instrumentalists have had more than she. This is in itself an extraor-



She is one of the very few modern singers who have been able to adapt the grand style of opera to the radio, and while no one can sing trifles with more daintiness and grace, there are very few who can reach the heights of the great arias which are fitted to be broadcast.

Madame Homer, recognized as one of the greatest Metropolitan Opera stars, appeared with the Boston Symphony Orchestra dozens of times. In several seasons she had from ten to thirteen consecutive engagements with that

dinary triumph to the art of this great American singer.

Now, with the increasing popularity of the radio, additional demands are being made for her time. The public has recognized that such perfected instruments as the Atwater Kent are capable of rendering concerts with a clarity and fidelity of tone heretofore considered impossible. This perfect reproduction, together with the supreme simplicity of such models as the Atwater Kent one-dial radio, is contributing immeasurable benefits to music lovers.

Crosley Radios

All models are now ready for delivery. We have all the new models on display at our store. The new Single Drum control sets are very desirable. Come and see them.

Large 45-Volt "B" Batteries

These batteries are fresh and full test. A battery that is guaranteed to stand up. Regular price \$3.75.

Our Price \$2.45

Heavy Duty Batteries—Regular \$4.75; our price \$3.60.
22½ Volts "B" Batteries—Regular \$1.75; our price \$1.20.

Your Old Tube Is Worth 25c

towards the purchase price of the NSW "ACE" tube. These tubes are guaranteed to give satisfaction. 75c and your burned-out or weak tube gets the new "ACE."

CONSOLE RADIO CABINETS

Styles and finishes to suit everybody, prices that will more than please you. We welcome you to our store to look these beautiful models over.

Priced from \$2.50 up

Rubber Cased Storage "A" Battery

A full capacity storage battery. Guaranteed for two years. 100 Ampere Capacity. Extra Special Now \$8.50

Out-of-Town Buyers

Mail your orders in. We guarantee everything we sell. Regardless of your radio needs, we either have it in stock or will get it for you at a saving to you.

Complete Line of the Famous "Utah" Speakers

in stock, including the new improved BELL, JUNIOR, SENIOR, BOOK, and the new Utah CONE. OVER 20 NEW MODELS IN SPEAKERS at our store, INCLUDING such speakers as the Western Electric, Rola Recreator, Rola Cone, Farrand Jr. and Sr., Crosley Cone, Cannonball Cone, Stromberg Carlson Cone. Prices Range from \$7.50 to \$40.00



Prospecting With Radio

Old-time prospectors, who sought deposits of precious metals near the surface of the earth, are practically through for two reasons: These visible outcrops have practically all been discovered and cleaned up; and the remaining ore of value is buried too deep for them to discover. Now comes the modern, scientific prospector, who has applied radio to this difficult task of searching out the earth's secret hiding places of its values. Considerable success has been achieved by Mr. Wm. A. Sharpe, of Denver, Colo., with his radio camera-*phone*.

Following his perfection of the radio seismograph in 1925, designed to aid in locating pools of oil and gas, as well as water, Mr. Sharpe discovered he could detect the presence of metallic substances in the ground with even greater ease and with less study than he could the presence of soil, rock, liquids and gases. Experiments showed that his radio apparatus reacted very definitely when metals are tested with his earth "sounding" apparatus. One of his first experiments was made on the roof of a seven-story building in Denver, in which his radio camera photographed the steel beams in the structure clearly. Although they were hidden from sight.

An effort was then made at Meteor Crater, Arizona, to locate a giant meteor which had buried itself years ago, but had never been recovered, despite countless drillings and borings. His radio camera soon showed the location of the largest mass as about 100 feet from the rim of the crater, but buried to a depth of 1410 feet.

Another successful test was made later in the Las Animas mining district of New Mexico, where many ores were known to exist. His instruments responded so sensitively to rich metallic veins and bodies of ore that he was able to designate the richest locations.

Eighteen new veins were located, all of which were proved upon exploitation. During the tests three ancient tunnels, abandoned and sealed up years ago, were discovered, along with gold and silver deposits.

The radio cameraphone, consists of three units, according to Mr. Sharpe's description in a report to the American Mining Congress. The first is a radio broadcaster, which generates radio waves of different lengths and sends them into the earth. Those waves extend to regulated progressive depths, the length of the wave advancing one foot at a time. The second piece of apparatus is a radio receiver, which picks up the returning wave, reversed by a closed circuit. In the receiver the tone pitch of the sound varies according to the mineral or substance at the far terminal of the wave. Metallic substances produce a much higher tone pitch than any other mineral, and recognizable variations in tone are produced by different minerals. These tones are described as "radio echoes," although not technically such.

The photographic part of the equipment is fitted with an illuminated vibratory, thin-metallic foil about an inch square, which is suspended by a hair spring in contact with the diaphragm of the telephone mechanism of the radio receiver. The illumination of the foil is reflected in a mirror which intensifies it about thirty-five times. The mirror throws the reflections on a ground-glass screen on which the vibrations appear as lights and shadows. These are photographed by a motion-picture camera, the film of which is automatically exposed. A new picture is taken with each foot of advancement in the radio wave length, as the test progresses into the earth. When developed, the photographic film may be shown on a motion-

(Continued on page 69)

Radio Topics of the Day

A Weekly Review of Radio News, Thought and Opinion

FRENCH PLANES MUST USE RADIO

All French commercial airplanes carrying passengers must be radio equipped, according to a recent decree of the French government. Consul Raymond Davis at Paris reports to the Department of Commerce that every airplane for public transport, capable of carrying at least ten passengers, must be supplied with a radio-telegraphic outfit when it is to travel more than 160 kilometers without a stop, or fly over the sea or at a distance greater than 12.5 kilometers from the sea coast. The equipment must be handled by a skilled operator and not by the pilot. Radio telegraphy only may be used in ordinary communication, but in case of necessity the radio telephone may be used to insure the safety of the plane and passengers.

Apparatus used on French commercial planes must be capable of listening in on 900 meters, and must assure transmission and reception on 600 meters on damped or continuous wave (audible frequency), as well as by continuous wave on 850 to 950 meters and 1,500 to 1,550 meters, and the reception by continuous wave from 850 to 1,800 meters. Every public transport plane capable of carrying more than five, but less than ten persons, must be equipped with radio apparatus when it flies for more than 160 kilometers without stop or flies over the sea or at a distance of more than 12.5 kilometers from the coast.

GOOD-BYE WIG-WAG

Wig-wagging, so picturesque in our past wars, is now a memory of bygone days, inasmuch as a formal order has been issued by the U. S. Army that the use of semaphore hand flags as a means of visual signaling has been discontinued. The order came about through inroads made first by the telegraph, then the telephone, and finally radio telegraph and telephone.

With the development of electrical and almost instantaneous communication, unhampered by fog or darkness, the wig-wag system has long been obsolete. It came to us through the Greek and Roman armies, originating before the time of Christ, but has at last given away to modern methods, as most things must.

MORE TROUBLE FOR SPAIN

In addition to their other domestic troubles, Spain appears to be in considerable of a ferment because a certain group there is reported as endeavoring to secure a monopoly of the country's broadcasting concessions.

COMPROMISE ON RADIO BILLS

President Coolidge is confident that a radio regulating bill will be passed by Congress within a reasonable time. It was stated at the White House recently that the legislation would probably be in the nature of a compromise of the Senate and House measures now in conference.

'Queen Titania's' Program Broadcast by WWJ

Tuesday evening, October 19th, WWJ, the radio station of the Evening News, Detroit, Michigan, picked up and re-broadcast KHJ, Los Angeles. This re-broadcast continued during the time that "Queen Titania's Radio Fairies" program was on the air, and ceased when Queen Titania said good-night to her Radioland friends. WWJ is doing this in response to the many requests from its territory to hear the little "Fairy of the Microphone." Receiving sets were installed in all of the children's hospitals in Detroit so that all of the small patients could enjoy the messages of joy and cheer which Queen Titania brings with her from the Land of Ought-To-Be. As far as can be ascertained, this is the first time special preparations have been made to re-broadcast the program of any child artist.

KFI to Broadcast Football Games

KFI has made arrangements, in connection with the Los Angeles Examiner, to broadcast play by play reports from the more popular eastern football games each Saturday during the season. These will include the Army-Navy and Yale-Harvard games. When these games are played in the east the broadcasting will commence from 10 to 10:30 a.m.; if played in the middle west it will start at from 11 to 11:30 a.m. Announcement of the exact time will be made over KFI on each Friday preceding the game. KFI is also broadcasting, play by play, reports each Saturday afternoon of the football games at the Coliseum in Los Angeles, and also the University of California vs. University of Southern California, direct from the field at the Memorial Stadium at Berkeley on October 23.

Western "B" Power Unit

Supplies "B" Current from
Your Light Socket.
Sold on Its Merits—
Compare It with Others



135-150 Volts
Operates Any Set—1 to 10
Tubes

\$24.00

F. O. B. Los Angeles

Ample Power
No Hum
No Distortion
Two Voltage Controls
Improves Reception

**SEE YOUR DEALER
OR SEND DIRECT**

ASHWORTH & GALLOP,
5853 S. Broadway, Los Angeles.

Gentlemen:—Please send me at once one Western "B" Power Unit. If after seven days' trial it is not satisfactory, I will return it and you will refund my money.

- ☐ Payment Enclosed.
☐ Send C. O. D.
☐ Send Literature.

Name.....
Address.....
City.....State.....
Dealer's Name.....

?

Questions and Answers

By N. E. BROWN, A.I.E.E. and A.S.M.E.
Technical Editor, Radio Doings

?

QUESTION—Charles Jones, Corona, Calif., says he has purchased a certain type of B eliminator for use with a model 25 R. C. A. receiver, but is not able to get things working right.

ANSWER—The eliminator you mention is not well adapted to the receiver in question. There are some that are such as to be used with your receiver and they give you full printed directions as to how to make the installation.

QUESTION—Merton A. Albee of Los Angeles writes he has made changes in the audio transformers and detector tube in his five-tube neutrodyne and now has a high pitched whistle that is heard when there is nothing on the air, but is drowned out when the program comes on.

ANSWER—It is possible that there is a sustained audio oscillation either in your detector or audio amplifier. Try taking out the grid leak, or shorting it. If the whistle stops it may be in the detector tube. Try one of the A tubes. If it is not affected by these changes try putting a .001-.0005 condenser across the secondary of the first transformer. If this cures it, it is in the audio amplifier and maybe grid and plate leads too close together, a high resistance in the common B battery lead or the combination of unsuitable transformers. Try reversing the primary of the first transformer. If any of these things stop it, it is due to transformers that are too alike, or coupling, electrostatic, electromagnetic or resistance, or combinations of them. Condensers should not be left on the secondaries, and the primaries should not be reversed, only as a means to

aid in location of the fault, after which the cause and not the symptom should be treated, and this is another job which can be done only with the receiver before one.

QUESTION—R. W. James of Los Angeles says he has five tube neutrodyne which is giving trouble by being noisy and sometimes it will not work at all until the current has been on for ten or fifteen minutes.

ANSWER—This sounds like a transformer or the windings of the speaker "going west;" you might try another speaker if you could get one and if changing speakers cleared the trouble it would indicate speaker trouble, but if it did not it would look like transformer trouble. Of course these symptoms can have other causes, but the most usual ones are mentioned.

QUESTION—Wm. E. Clark, of Sacramento, Calif., asks if the direction of the aerial has any effect on the dial readings. Asks why some stations do not come in in the proper order on his dials.

ANSWER—Unless the actual capacity to ground of the antenna varies the tuning will be the same. That is, if in swinging the flat top of the antenna 360 degrees it does not come close to the earth or other bodies, so as to increase or decrease the capacity to ground, the position on the dial will be the same for a given wave length. Stations may not come in in proper sequence on your dials because of mistakes in the tabulations, changes of allocation and freaks of resonance which, for the want of a better name, are called harmonics.

Static

WE CELLDOM TRY

A reader says some prison must be broadcasting these days. "Otherwise," he asks, "how do you account for all these chain programs?" — *Broadcast Listener*.

PROVING IT

"They say Jones is dead-broke."

"He is. He couldn't pay for the upkeep of a crystal set."—*Science and Invention*.

HE COULD DO NOTHING CHEAPER

The stingiest man in the world bought a radio. On Sunday morning he tuned in and listened to the best sermon preached. When the minister announced, "Now the ushers will pass the plate, be liberal," this man turned off his radio.—*Terre Haute Star*.

ALSO A PRIZE FIGHT

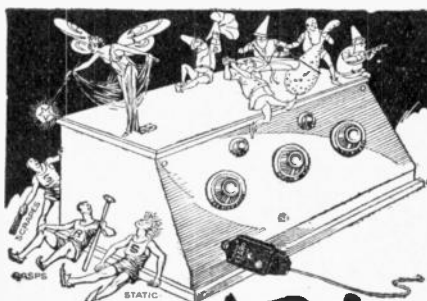
Hearing a football game through the loud speaker also helps to conserve the overcoat and keep the feet dry, even if it does cut down the gate receipts.—*Indianapolis News*.

THE WIND'S COMPLAINT

"Young radio sets, I grieve to say,
Are most impertinent today,
Because they copy what I do—
When I start howling, they howl, too."
—*Wireless Magazine*.

CAUTIOUS PURCHASER

"You'll make no mistake, madam, in taking this set. It's a wonder."
"Yes, but, see here, how often do you have to wind it?"—*Radio Age*.



SNAP!

Poly Claro-Plug Improves Your Loud Speaker's Tone Almost Beyond Belief

Chases the scrapes, rasps and other extraneous noises from your loud speaker; modifies static; broadens the range, booming in the bass and high tones; improves the tone quality of even the most inexpensive loud speaker.

Merely plug into the loud speaker jack and push phone plug into sleeve provided. For sets without jacks, attach to binding posts—simple, easy, quick. Try one on your set today.



Price \$1.50

Polyplugs Can't Be Tugged or Jarred Loose!

The loud speaker cord criss-crosses through Polymet's exclusive tension slot. Now just try to loosen that positive contact by tugging or jarring—not a chance in the world! Automatic, quick, easy.

Poly Plug, Genuine Bakelite . . . 50c
E-Z Plug, Composition . . . 35c



Write today for illustrated descriptions of all Polymet Products. Sent FREE on request.

Polymet Manufacturing Corporation
599-F Broadway . . . New York City
Pacific Coast Representatives

The Spector Company, Los Angeles, Cal.

POLYMET PRODUCTS

The Why of Radio

By N. E. BROWN, Radio Technician

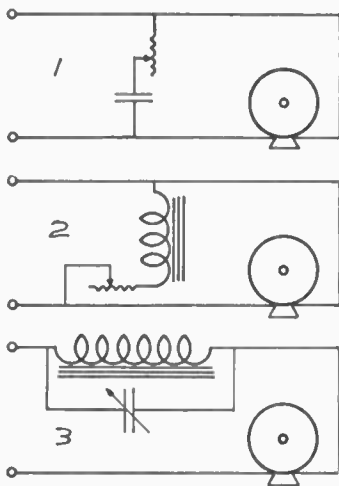
Institute of Radio Engineers—American Society of Mechanical Engineers; American Institute of Electrical Engineers

EDITOR'S NOTE—This is the sixty-seventh installment of **RADIO DOINGS'** complete course in Radio. It began with the issue of July 4th, 1925, and will cover every phase of radio from the basic principles to and including every device and set now in use. This course will be continued from week to week.

(Conclusion of Last Week's Installment)

The third type of treatment requires more skill than the two just mentioned, as it will need band choke effects to be had by tuning the choke by a variable condenser alone or by the same and suitable fixed capacities in parallel with it. The use of this type of compensation will be indicated when there is heard sharp resonant effects at some point in the tonal range, which may be due to acoustic defects in the mechani-

MODIFYING TONE QUALITY.



TECH. LAB. OF N.E. BROWN.

cal parts of the speaker or electrical shortcomings in the speaker, any of the transformers, improper ratio of B to C batteries, etc., as the writer has many times enumerated. Any one of these will give rise to peaks of volume at some points (and combinations may give rise to several peaks closely or widely associated), but while it is better to treat the causes of these defects it may be easier to treat the symptoms as suggested in this article.

If the choke is quite sharply tuned

and a shortcircuiting switch provided, the effect may be noted by the ear and either the capacity or inductance increased to reach a lower point in the scale or one or both may be decreased to reach a higher point in the musical range until the exact part of the scale is reached that it is desired to effect. Then, if the band covered by the resonant circuit is too broad, it may be narrowed by increasing the capacity element and decreasing the inductive element in the same proportion, and on the other hand, if a wider effect is desired, it may be had by decreasing the capacity element and increasing the inductive element, and if the effect is too severe, it may be reduced by shunting the resonant circuit by a variable resistance, so as to let more or less of the current pass to the speaker without modification by the tuned circuit.

Now do not make a mistake by thinking the resistance should be included in the tuned part of the circuit, for this would not get the desired results, it would only greatly broaden the band covered. This is, in fact, a band rejector circuit. A band pass circuit would have the inductance and capacity in series and would then act to let a certain band through easily and reject all other frequencies outside of this band.

The efficiency of single section filters like that shown in No. 3 is not high and the curve is usually quite broad, but this is just what is desired in this case IF THE RESONANCE THAT IS CAUSING THE TROUBLE IS ALSO BROAD, and it usually is, due to the acoustic properties of a poorly designed horn or to some part of the electrical and magnetic circuits. If it should develop in the experimental work that a more sharply tuned unit must be had than can be gotten from high capacity and small inductance then a more complicated network will have to be designed and constructed. This would then assume the form of Campbell filter the technical discussion of which would be out of place in this article.

October in Radio History

- 1901. The first fan aerials were erected for experiments between Poldhu, England and Newfoundland.
- 1905. Construction of Clifden, Ireland, high power radio station was commenced.
- 1907. Trans-Atlantic stations at Clifden and Glace Bay were opened for limited public service.
- 1913. The Volturno was burned in mid-Atlantic. In response to the wireless appeal 10 vessels came to the rescue and 521 lives were saved.
- 1914. E. H. Armstrong was issued a patent covering the regenerative circuit, also known as super-heterodyne circuit.
- 1915. Communication was effected across the Atlantic from Arlington to the Eiffel Tower, Paris.
- 1923. Vienna Fire Department installed receiving sets on apparatus.
- 1924. Radio vision, or seeing by radio, loomed as possibility.
- 1925. Remarkable development of short waves. Discovered that short-wave signals which could not be heard 1000 miles away were distinctly heard 10,000 miles away.
- 1926. Following an epoch-making year in sending photographs by radio, weather maps are broadcast to U. S. naval vessels.

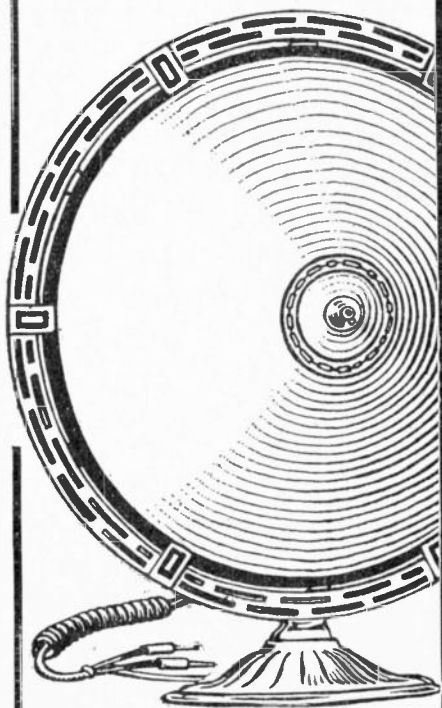
It has been estimated that to operate a 20-kw. station, including programs and all overhead, costs about \$300 an hour every hour the station is on the air. This calculation is based on a nine-hour operating day.

Among the interesting radio lectures now on the air are the Eye-o-logues of the Marshutz Optical Co., well-known eyesight specialists of 518 West Sixth Street, Los Angeles. Every Wednesday evening at 7:30, KMTR broadcasts these ten-minute talks.

Herald

\$13.75

A FREE-EDGED cone speaker, 18 inches high, with protecting metal frame. Compare this handsome new Herald for volume and tone with any higher priced speaker at your dealer's.



BAKER-SMITH CO., INC.
 Call Bldg., San Francisco, Cal.
 Selling Representatives for Pacific Coast

DX CLUB

The World at His Finger Tips

San Pedro, Calif.

October 8, 1926.

Radio Doings:

In connection with some of the DX I have been getting, and in which I know you will be interested, I am inclosing a number of news clippings and pictures, if you care to use them, for your DX Club, also a picture of myself.

I received a letter from King George of England today. He is quite a DX fan himself, and he was interested in some of my receptions of their British stations.

Also received a letter from Mr. L. W. Roberts, head of the International Bible Students of Brisbane, Australia.

The Australian and Japanese stations are coming in great for the past week, pick them up on the loud speaker with enough volume, using two stages (five

tubes) on my Super Zenith set, to fill a large room.

Later on, when conditions are more favorable, I am planning to have a number of DX parties for foreign stations between 2:00 a.m. and daylight. I'll do this regularly about twice a month.

Also will try to rebroadcast some of the Japanese and Australian stations through some of the local stations.

Also want to say that the Middle West, and some of the Eastern stations, are breaking through for the past two weeks. It looks like a great DX winter. PWX, Havana, came in

good last Sunday, October 3rd.

Wishing you a great success in the RADIO DOINGS and the DX Club,

Signing off,

JACK MOSKOVITZ,
1121 S. Meyler St.



No Wonder Jack Smiles

SOME MORE DX

The following information covering DX reception was furnished us recently by "Hastings" of Venice, California:

WGY, Schenectady, was heard on September 16th from 3:20 p. m. to 4:25 p. m. by Mr. Stevenson of the Venice Radio Shop, using a six-tube Splitdorf,

and "Hastings," also at Venice, on his three-tube. Reception was good except when the station was interfered with by KVOO, Brislw, Okla., and KRCA (portable) at Riverside. Mr. Stevenson states WGY could be heard thirty feet away from the speaker.

Distant Stations for the DX Fan

| Call Letters | Location | W.L. Meters | Power Watts | Schedule of Concert and Dance Music |
|--------------|---------------------|-------------|-------------|--|
| CYL | Mexico City | 480 | 1000 | Sun., Tues., Fri., 8 to 9 p. m. |
| WJAD | Waco, Texas | 353 | 200 | Tues., Wed., Fri., 6 to 8 p. m. |
| KPRC | Houston | 297 | 500 | Sat. and Wed., 8 to 10 p. m. |
| WHB | Kansas City | 366 | 500 | Sun., 8 to 11 p. m. Tues., 6 to 7 p. m. |
| WDAF | Kansas City | 366 | 1000 | Daily except Sun., 9:30 to 11 p. m. |
| WHO | Des Moines | 526 | 5000 | Daily except Sat. and Wed., 9 to 10 p. m. |
| KMOX | St. Louis | 280 | 1500 | Daily except Sun. and Thurs., 1 to 9 p. m. |
| KSD | St. Louis | 545 | 500 | Thurs., Fri. and Sat., 7 to 9 p. m. |
| WGN | Chicago | 303 | 1000 | Daily except Sun., 8 to 9 p. m. |
| WLIB | Chicago | 303 | 4000 | Daily except Sun., Mon., Wed., 9 to 11 p. m. |
| WHT | Chicago | 238 | 3500 | Daily except Sun. and Mon., 8 to 10 p. m. |
| WQJ | Chicago | 447 | 500 | Daily except Sun. and Mon., 8 to 12 p. m. |
| WBBM | Chicago | 226 | 1500 | Daily except Mon. and Fri., 6 to 10 p. m. |
| AT9 | Fort Bragg, N. C. | 434 | 750 | Tues., Thurs., Sat., 5 to 7 p. m. |
| WCX | Detroit | 517 | 5000 | Daily except Sat. and Sun., 4 to 8 p. m. |
| WJR | Pontiac | 517 | 5000 | Mon., Wed., Sat., 7 to 10 p. m. |
| WKRC | Cincinnati | 326 | 1000 | Sun., Tues., Thurs., Sat., 8 to 10 p. m. |
| WGR | Buffalo | 319 | 750 | Mon and Fri., 6 to 10 p. m. |
| CFCF | Montreal | 411 | 2000 | Mon. and Fri., 6 to 8:30 p. m. |
| CFCA | Toronto | 356 | 2000 | Wed., 8 to 9 p. m. |
| CKAC | Montreal | 411 | 1500 | Tues. and Thurs., 6 to 9 p. m. |
| WMBF | Miami, Fla. | 384 | 500 | Daily, 5 to 10 p. m. |
| WGHB | Clearwater, Fla. | 266 | 500 | Daily except Sun., 5 to 10 p. m. |
| WGBU | Tulford, Fla. | 278 | 500 | Daily except Sun., 5 to 10 p. m. |
| PWX | Havana | 400 | 1000 | Daily except Thurs., 5 to 8 p. m. |
| WOO | Philadelphia | 508 | 500 | Daily, 4:30 to 5:30 p. m. |
| WIP | Philadelphia | 508 | 500 | Tues., Thurs., Sat., 7 to 9 p. m. |
| WBAL | Baltimore | 246 | 1000 | Mon., Tues., Thurs., Fri., 6 to 9 p. m. |
| WPG | Atlantic City | 300 | 500 | Daily, 6 to 8 p. m. |
| WAHG | Richmond Hill, N.Y. | 316 | 500 | Mon., Wed., Fri., 4:30-9 p. m. Sat., 9 p. m. |
| WHAZ | Troy, N. Y. | 379 | 1000 | Mon., 5 to 7:30 p. m. |
| WEAF | New York City | 491 | 5000 | Daily except Sun., 3 to 9 p. m. |

FOR YOUR ENTERTAINMENT

The Makers of

WHITE KING AND MISSION BELL SOAP



Will Broadcast over KFI
every Saturday evening
from 8:00 to 9:00



Latest Broadcast Changes

Five new broadcasters were licensed last week and five wave-length changes were announced by the Department of Commerce.

FIVE NEW STATIONS

| Call | Owner | Wave Length Meters | Frequency Keys | Power Watts |
|------|---|-----------------------|-------------------|----------------|
| KXRO | Brott Laboratories, Seattle Wash..... | 240 | 1249 | 85 |
| WDXL | DXL Radio Corp., Detroit, Mich..... | 296.9 | 1010 | 250 |
| WEDC | Emil Denmark Broadcasting Station, Chicago, Ill..... | 422.3 | 710 | 1000 |
| KGCX | First State Bank of Vida, Vida, Mont..... | 240 | 1249 | 7½ |
| KSEI | KSEI Broadcasting Association, Pocatello, Idaho | 260.7 | 1150 | 500 |

CHANGES ANNOUNCED

WRNY, Experimenter Publishing Co., New York, N. Y., wave length changed from 374.8 meters, or 800 kilocycles, to 373.8 meters, or 802 kilocycles.

KFWC, L. E. Wall, San Bernardino, Calif., from 211.1 meters, or 1420 kilocycles, to 291.1 meters, or 1030 kilocycles.

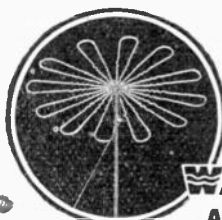
KFQB, Lone Star Broadcast Co., Fort Worth, Texas, name changed from The Searchlight Publishing Co., wave length from 263 meters, or 1140 kilocycles, to 508.2 meters or 590 kilocycles.

WEMC, Emanuel Missionary College, Berrien Springs, Mich., wave length changed from 285.5 meters, or 1050 kilocycles, to 315.6 meters, or 950 kilocycles.

WGES, Oak Leaves Broadcasting Corp., Chicago, Ill., wave length changed from 249.9 meters, or 1200 kilocycles, to 315.6 meters, or 950 kilocycles.

KFQW., C. F. Kuierim, location changed from North Bend, Wash., to Seattle, Wash.

Costa Rica and Salvador are now in communication with each other by radio.



**Bring In
Every
Station
on the
Air
with a**

**WAVE-X
Condensing
ANTENNA**

An aerial that can be erected on wall, chimney or roof, anywhere 5 foot square is available. Provides sharper tuning. Increases selectivity and is non-directional. Twelve highly conductive feelers reaching out in all directions have the capacity of long single wire. Perfect insulation prevents losses. Erected and dismantled quickly. A single upright to erect, hammer and screwdriver the only tools needed. No. 2, 8 foot pole ready to install, full instructions, \$12.50. Get a Wave-X now.

**REDI-MAST
FOR AERIALS**

A strong hand turned rock maple pole 5 to 8 foot lengths. Fits any roof. Will carry heaviest sheet covered single or multiple wire antennas in strong wind. Complete, guy rods, nab irons, roof sockets, anchor pins and full instructions. 5 foot mast \$3.50 each. 8 foot \$4.25. Ask your dealer.

DEALERS

Wave-X and Redi-Mast are quick sellers. Write today for our dealer offer.

The Zinke Co.
1323 S. Mich.,
Chicago

**The Pressed
Metal Mfg. Co.**
Waukesha, Wis.

HOW TO REACH THEM BY PHONE

KFI—Los AngelesWESTmore 0331
After 6 P. M.WESTmore 0337
KFSG—Los AngelesDRExel 2560
KHJ—Los Angeles...METropolitan 0700
KTLB—Los Angeles...METropolitan 4601
KFWB—HollywoodGLadstone 9461
KFQZ—HollywoodGLadstone 3196
KMTR—HollywoodHOLlywood 3026
KNX—HollywoodHOLlywood 4606
KPSN—PasadenaWAKEfield 3111
KNRC—Santa Monica..Santa Mon. 63101
KFVD—Venice659-50
KFON—Long Beach61460
KFWI—San FranciscoGraystone 466
KFRC—San FranciscoDouglass 4500
After 6 P. M.Douglass 4509
KJBS—San FranciscoGraystone 456
KPO—San FranciscoSutter 5600
After 5:30 P. M.Kearney 5777
KFUU—OaklandLAKeside 1730
KFUS—OaklandELmhurst 4709
KGO—OaklandFRUITvale 5980
KLX—OaklandLAKeside 6000
KLS—OaklandLAKeside 6223
KRE—OaklandTHornwall 1
During broadcasting hours..Berk. 9300
KTAB—OaklandMERritt 246
KZM—OaklandLAKeside 100
KFSD—San DiegoMain 8661
KFOB—BurlingameBurlingame 4565
KFQU—Holy City, Calif...Los Gatos 458

ALL TIME TABLES ADJUSTED
TO PACIFIC TIME
(X) Indicates Station Is On the Air

[illegible]

Authorized Dealer for Fada and Crosley Sets

Sales, Service and Exchange

Battery Charging, 50c—Tubes Rejuvenated Free

DAVIS RADIO CO.

**Time Payments if Desired.
Open Evenings and Sundays**

WEstmore 6948
2817 S. Main St., Los Angeles

MONDAY TIME TABLE

ALL TIME TABLES ADJUSTED
TO PACIFIC TIME
(X) Indicates Station Is On the Air

| | | | | STATIONS | | | | | | | |
|---------------|--------------|-------------|-------------------|----------|-----------------------|-------------------|---------|--------------|--------------|---------------|---------------|
| | | | | | | | | | | | |
| 10-12 A.M. | 12-2 P.M. | 2-4 P.M. | 4-8 P.M. | CALL | Wave Length Meters | Power In Watts | STATION | 8-10 P.M. | 8-10 P.M. | 10-12 P.M. | 10-12 P.M. |
| 10-00-10-30 | 10-30-11-00 | 11-00-11-30 | 11-30-12-00 | X | X | X | X | X | X | X | X |
| 12-00-12-30 | 12-30-1-00 | 1-00-1-30 | 1-30-2-00 | X | X | X | X | X | X | X | X |
| 2-00-2-30 | 2-30-3-00 | 3-00-3-30 | 3-30-4-00 | X | X | X | X | X | X | X | X |
| 4-00-4-30 | 4-30-5-00 | 5-00-5-30 | 5-30-6-00 | X | X | X | X | X | X | X | X |
| KFI | 467 | 4000 | Los Angeles | X | X | X | X | X | X | X | X |
| KHJ | 405 | 500 | Los Angeles | X | X | X | X | X | X | X | X |
| KNX | 337 | 750 | Los Angeles | X | X | X | X | X | X | X | X |
| KTBI | 294 | 750 | Los Angeles | X | X | X | X | X | X | X | X |
| KNRC | 238 | 1000 | Santa Monica | X | X | X | X | X | X | X | X |
| KFWB | 252 | 500 | Hollywood | X | X | X | X | X | X | X | X |
| KMTR | 370 | 500 | Hollywood | X | X | X | X | X | X | X | X |
| KFQZ | 226 | 500 | Hollywood | X | X | X | X | X | X | X | X |
| KPSN | 315 | 1000 | Pasadena | X | X | X | X | X | X | X | X |
| KFWC | 211 | 100 | San Bernardino | X | X | X | X | X | X | X | X |
| KFON | 233 | 500 | Long Beach | X | X | X | X | X | X | X | X |
| KFVD | 205 | 250 | Venice | X | X | X | X | X | X | X | X |
| KFSD | 246 | 1000 | San Diego | X | X | X | X | X | X | X | X |
| KFCB | 380 | 50 | San Diego | X | X | X | X | X | X | X | X |
| AMB | 327 | 100 | Tijuana, Mex. | X | X | X | X | X | X | X | X |
| CYH | 311 | 1000 | Monterey, Mex. | X | X | X | X | X | X | X | X |
| KSMR | 285 | 100 | Santa Maria | X | X | X | X | X | X | X | X |
| KPO | 428 | 1000 | San Francisco | X | X | X | X | X | X | X | X |
| KJBS | 220 | 5 | San Francisco | X | X | X | X | X | X | X | X |
| KFRC | 268 | 50 | San Francisco | X | X | X | X | X | X | X | X |
| KFWI | 250 | 500 | San Francisco | X | X | X | X | X | X | X | X |
| KQW | 333 | 500 | San Jose | X | X | X | X | X | X | X | X |
| KTAB | 303 | 1000 | Oakland | X | X | X | X | X | X | X | X |
| KGO | 361 | 4000 | Oakland | X | X | X | X | X | X | X | X |
| KZM | 240 | 100 | Oakland | X | X | X | X | X | X | X | X |
| KLX | 508 | 500 | Oakland | X | X | X | X | X | X | X | X |
| KFUS | 256 | 50 | Oakland | X | X | X | X | X | X | X | X |
| KRE | 256 | 100 | Berkeley | X | X | X | X | X | X | X | X |
| KMJ | 234 | 50 | Fresno | X | X | X | X | X | X | X | X |
| KFWH | 254 | 100 | Eureka | X | X | X | X | X | X | X | X |
| KFBK | 535 | 100 | Sacramento | X | X | X | X | X | X | X | X |
| KFOA | 454 | 1000 | Seattle | X | X | X | X | X | X | X | X |
| KJR | 384 | 1000 | Seattle | X | X | X | X | X | X | X | X |
| KOMO | 306 | 1000 | Seattle | X | X | X | X | X | X | X | X |
| KHQ | 394 | 1000 | Spokane | X | X | X | X | X | X | X | X |
| KMO | 250 | 500 | Tacoma | X | X | X | X | X | X | X | X |
| KOWW | 285 | 500 | Walla Walla | X | X | X | X | X | X | X | X |
| KGW | 491 | 1000 | Portland | X | X | X | X | X | X | X | X |
| KFJR | 263 | 50 | Portland | X | X | X | X | X | X | X | X |
| KFEC | 248 | 50 | Portland | X | X | X | X | X | X | X | X |
| KOIN | 319 | 1000 | Portland | X | X | X | X | X | X | X | X |
| KOAC | 280 | 500 | Corvallis, Ore. | X | X | X | X | X | X | X | X |
| CFAC | 437 | 2000 | Calgary | X | X | X | X | X | X | X | X |
| KSL | 300 | 1000 | Salt Lake City | X | X | X | X | X | X | X | X |
| KOA | 322 | 5000 | Denver | X | X | X | X | X | X | X | X |
| KLZ | 384 | 500 | Denver | X | X | X | X | X | X | X | X |
| WOAW | 528 | 1000 | Omaha | X | X | X | X | X | X | X | X |
| WOC | 484 | 5000 | Davenport | X | X | X | X | X | X | X | X |
| WOAI | 394 | 5000 | San Antonio | X | X | X | X | X | X | X | X |
| WBAP | 476 | 1000 | Fort Worth | X | X | X | X | X | X | X | X |
| KFKP | 288 | 5000 | Hastings | X | X | X | X | X | X | X | X |
| KYW | 536 | 3500 | Chicago | X | X | X | X | X | X | X | X |
| KDKA | 309 | 1000 | Pittsburgh | X | X | X | X | X | X | X | X |
| WJZ | 454 | 1000 | New York | X | X | X | X | X | X | X | X |
| WGY | 380 | 5000 | Schenectady | X | X | X | X | X | X | X | X |
| KMOX | 280 | 5000 | St. Louis | X | X | X | X | X | X | X | X |
| KTHS | 375 | 1000 | Hot Springs, Ark. | X | X | X | X | X | X | X | X |

Model No. 200

\$35⁰⁰**Console with Cone Loudspeaker****Ready for Your Set and Batteries**

Rear view showing large compartment providing ample space for all batteries, battery charger or battery eliminator. These are entirely concealed from view. The back is open for ventilation of batteries.

MODEL 200
with 22-inch ConeMODEL 200
with 22-inch Cone

The Cone Loudspeaker, with its spruce sounding board, is quickly and easily removable, allowing instant access to all batteries, battery eliminator or other equipment and wiring.

A Revelation in Radio Reproduction

AT LAST—a cone loudspeaker that reproduces *all* the tones as they are broadcast. From the deep voiced tuba of an orchestra to the softest note of a vocal solo—*every* tone—*every* sound is reproduced in all its beauty, just as it entered the microphone.

This 22-inch Windsor Cone Loudspeaker, with its spruce sounding board, will reproduce the softest crooning lullaby in a softly lighted room, or the full throated march music of a band in an auditorium—both with perfect fidelity of sound and tone.

The Windsor Cone Loudspeakers Console is the greatest value in the world of radio. When compared with the average cost of cone-type loudspeakers of even smaller size, the cost of the complete Windsor—cone loudspeaker, spruce sounding board, and console—is amazingly low.

As a piece of furniture, the Windsor Cone Loudspeaker Console is of such manifest high

quality and attractive design as to be a welcome addition to any home. Finished in Mahogany or Walnut.

The Windsor Cone and Horn Loudspeakers, combined with attractive pieces of furniture in many models, are being demonstrated by recognized dealers everywhere. Go to your dealer today and examine this astonishing new Cone Loudspeaker Console. If he happens not to have one, write to us and we will tell you the name of the nearest store

at which you can see and hear one.

Note to Dealers Write or wire today for details of the highly profitable Windsor selling franchise.

WINDSOR FURNITURE COMPANY

World's Largest Manufacturers and Originators of Loudspeaker Consoles

Carroll Avenue, Chicago, Illinois

Los Angeles Branch
917 Maple Avenue

With 16-inch Cone (Pat. applied for) This 20 by 17-inch Cone Loudspeaker Table has suspended from the under side of the top a 16-inch Windsor Cone Loudspeaker. Placed in any part of a room, it fills the room with music just as an inverted electric lamp floods the room with light. Finished in Mahogany or Walnut.



Model 60C

Price.....**\$23**

WINDSOR FURNITURE COMPANY

Electrical Department,
917 Maple Ave., Los Angeles.

Send me **FREE** and without obligation circulars of the Windsor line of Cone and Horn Loudspeakers combined with pieces of furniture, and name of nearest dealer:

Name.....
Address.....
City.....State.....
Dealer's Name.....

R. D. 6

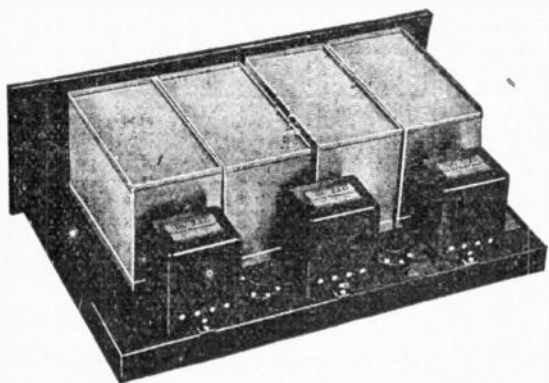
**ALL TIME TABLES ADJUSTED
TO PACIFIC TIME**
(X) Indicates Station Is On the Air

World Radio History

SM

630

SILVER SHIELDED SIX



One of the highest types of broadcast receivers. It embodies complete shielding of all radio frequency and detector circuits and the quality of reproduction is *real*—true to the ear. Behind the Shielded Six is competent engineering, it is sensitive—selective, and yet there are but two dials to tune. The 630

kit including all specified matched and measured parts, \$104.50

We can furnish cabinets for either table or console models.

220 AND 221 AUDIO TRANSFORMERS



S-M 220—the big, husky audio transformer you hear in the finest sets—the only transformer with the *rising* low note characteristic that means real quality—not only on paper—but when you hear it. It is a power job—yet this finest of audio amplifying devices is sold, with a guarantee for but \$6.60.

The S-M 221 is an output transformer that will bring out the low notes on your present set. It should be used between the last audio tube and the loud speaker—it eliminates blasting and will increase speaker capacity for handling strong signals without distortion, \$6.60

We can make immediate delivery at this time. Orders filled in rotation. No. 630 kit can be furnished assembled if desired at a list price of \$121.50.

WOODILL & HULSE ELECTRIC CO.

111 E. 3rd St.

Los Angeles

WEDNESDAY TIME TABLE

ALL TIME TABLES ADJUSTED
TO PACIFIC TIME
(X) Indicates Station Is On the Air

| | | | | | | | | | | STATIONS | | | | 6-8 P.M. | 8-10 P.M. | 10-12 P.M. |
|---------------|--------------|-------------|-------------|-------------|--------------|---------------|--------------|-------------|-------------|-----------|-----------------------|-------------------|-------------------|-------------|--------------|---------------|
| 10-12 A.M. | 12-2 P.M. | 2-4 P.M. | 4-6 P.M. | 6-8 P.M. | 8-10 P.M. | 10-12 P.M. | 12-2 P.M. | 2-4 P.M. | 4-6 P.M. | CALL | Wave Length Meters | Power In Watts | STATION | 6-8 P.M. | 8-10 P.M. | 10-12 P.M. |
| 10 00-10 30 | 10 30-11 00 | 11 00-11 30 | 11 30-12 00 | 12 00-12 30 | 12 30-1 00 | 1 00-1 30 | 1 30-2 00 | 2 00-2 30 | 2 30-3 00 | 3 00-3 30 | 3 30-4 00 | 4 00-4 30 | 4 30-5 00 | 5 00-5 30 | 5 30-6 00 | |
| X | X | | | | | | | | | KFI | 467 | 4000 | Los Angeles | X | X | X |
| | | | | | | | | | | KHJ | 405 | 500 | Los Angeles | | X | X |
| X | X | | | | | | | | | KNX | 337 | 750 | Los Angeles | X | X | X |
| X | X | X | X | | | | | | | KFSG | 275 | 500 | Los Angeles | | X | X |
| | | | | | | | | | | KTBI | 294 | 750 | Los Angeles | | X | X |
| | | | | | | | | | | KNRC | 238 | 1000 | Santa Monica | | X | X |
| | | | | | | | | | | KFWB | 252 | 500 | Hollywood | X | X | X |
| X | | | | | | | | | | KMTT | 370 | 500 | Hollywood | X | X | X |
| | | | | | | | | | | KFQZ | 226 | 500 | Hollywood | X | X | X |
| | | | | | | | | | | KPSN | 315 | 1000 | Pasadena | X | | |
| | X | X | X | | | | | | | KFWC | 211 | 100 | San Bernardino | | | |
| | | | | | | | | | | KFWO | 211 | 250 | Catalina | X | X | X |
| | | | | | | | | | | KFVD | 205 | 250 | Venice | X | X | X |
| | | | | | | | | | | KFSD | 246 | 1000 | San Diego | X | X | X |
| | | | | | | | | | | KFBC | 380 | 50 | San Diego | | X | X |
| | | | | | | | | | | AMB | 327 | 100 | Tijuana, Mex. | | X | X |
| | | | | | | | | | | KSMR | 285 | 100 | Santa Maria | X | X | X |
| | | | | | | | | | | KFON | 233 | 500 | Long Beach | X | X | X |
| X | X | | | | | | | | | KPO | 428 | 1000 | San Francisco | X | X | X |
| X | X | | | | | | | | | KFRG | 268 | 50 | San Francisco | X | X | X |
| X | X | | | | | | | | | KJBS | 220 | 5 | San Francisco | | | |
| | | | | | | | | | | KFWI | 250 | 500 | San Francisco | X | X | X |
| X | | | | | | | | | | KQW | 333 | 500 | San Jose | X | X | X |
| | | | | | | | | | | KTAB | 303 | 1000 | Oakland | | X | X |
| | | | | | | | | | | KGO | 361 | 4000 | Oakland | X | X | X |
| | | | | | | | | | | KLX | 508 | 500 | Oakland | | X | X |
| X | X | | | | | | | | | KZM | 240 | 100 | Oakland | | X | X |
| | | | | | | | | | | KFUS | 256 | 50 | Oakland | | X | X |
| | | | | | | | | | | KRE | 256 | 100 | Berkeley | | | |
| X | X | X | | | | | | | | KMJ | 234 | 50 | Fresno | | X | X |
| | | | | | | | | | | KGW | 491 | 1000 | Portland | X | X | X |
| | | | | | | | | | | KFWH | 254 | 100 | Eureka | X | X | X |
| | | | | | | | | | | KOIN | 319 | 1000 | Portland | | X | X |
| | | | | | | | | | | KFEC | 248 | 50 | Portland | X | | |
| | | | | | | | | | | KOAC | 280 | 500 | Corvallis, Ore. | | X | X |
| | | | | | | | | | | KFOA | 454 | 1000 | Seattle | | X | X |
| X | X | X | | | | | | | | KOMO | 306 | 1000 | Seattle | X | X | X |
| X | X | X | | | | | | | | KJR | 394 | 1000 | Seattle | X | | |
| X | X | | | | | | | | | KMO | 250 | 500 | Tacoma | | X | X |
| | | | | | | | | | | KOWW | 285 | 500 | Walla Walla | | X | X |
| | | | | | | | | | | CFAC | 436 | 2000 | Calgary | | | |
| | | | | | | | | | | WOAI | 394 | 5000 | San Antonio | X | X | |
| X | X | X | | | | | | | | WBAP | 476 | 1000 | Fort Worth | | X | X |
| | | | | | | | | | | WSMB | 319 | 500 | New Orleans | X | X | X |
| | | | | | | | | | | WOC | 484 | 5000 | Davenport | | X | X |
| X | X | X | | | | | | | | WHO | 526 | 5000 | Des Moines | X | X | X |
| | | | | | | | | | | KOA | 322 | 5000 | Denver | X | X | X |
| | | | | | | | | | | KLZ | 384 | 500 | Denver | X | X | X |
| | | | | | | | | | | WOAW | 526 | 1000 | Omaha | | X | X |
| | | | | | | | | | | KSL | 300 | 1000 | Salt Lake City | X | X | X |
| X | X | | | | | | | | | KFKX | 288 | 5000 | Hastings | | | |
| X | X | | | | | | | | | WLS | 345 | 1500 | Crete, Ill. | X | X | X |
| | | | | | | | | | | KYW | 535 | 3500 | Chicago | X | X | X |
| X | | | | | | | | | | KDKA | 300 | 1000 | Pittsburgh | X | X | X |
| | | | | | | | | | | WGY | 380 | 5000 | Schenectady | X | | |
| X | X | X | | | | | | | | KMOX | 280 | 5000 | St. Louis | | X | X |
| | | | | | | | | | | KTHS | 375 | 1000 | Hot Springs, Ark. | | X | X |

Operating P. O. Substation No. 66

Royal

The Most Convenient Electric Washer

—fits on stationary tubs

The Royal Electric Washer applies proven washing methods in a modern way, eliminating every undesirable feature found in machines of the usual type

Requires No Floor Space

Royal fastens on your sanitary stationary tubs. No machine in your way or to shove around when used.

No Water to Handle

Just turn the faucet for all the hot or cold water desired, pull the plug when through.

Cleaner Clothes

Your clothes will be getting gently washed with a natural hand washing motion, and then you rinse by power in clean hot water. Rinsing is as important as washing. Using power for both washing and rinsing means cleaner clothes.

Simple to Operate

And it's all so simple. You just place the wash, a few pieces or many, in the tub, turn the faucets for all the hot or cold water you need, put in your soap, turn the electric switch and—that's all.

Sanitary

Your porcelain enamel lined stationary tub is the logical place to wash—it stays clean and sanitary. Zinc, tin, copper, aluminum bath tubs and laundry trays are practically unknown today, for the good reason.

Guaranteed

The Royal Electric Washer is fully guaranteed. Over 8000 are in use today in California homes.

*Royal costs less and does more. Why not pay a little down and have this wonderful convenience in your home—NOW?
Phone EMpire 1141*

L. A. DUNCAN

RADIO ELECTRICIANS

2889-2891 West Pico

Los Angeles' Finest Electric Store

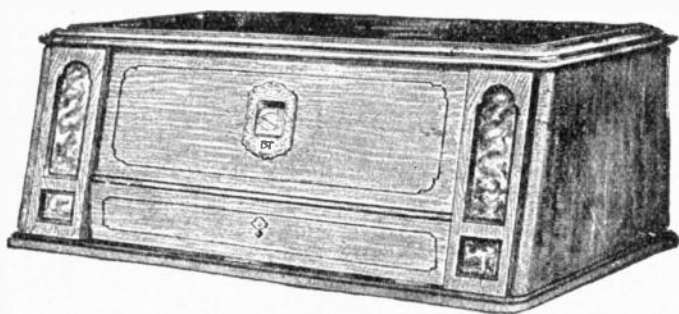
THURSDAY TIME TABLE

ALL TIME TABLES ADJUSTED
TO PACIFIC TIME

(X) Indicates Station Is On the Air

| 10-12 A.M. | | 12-2 P.M. | | 2-4 P.M. | | 4-6 P.M. | | STATIONS | | 6-8 P.M. | | 8-10 P.M. | | 10-12 P.M. | |
|---------------|-------------|--------------|-------------|-------------|------------|-------------|-----------|-----------|-----------|-------------|-----------|--------------|-----------|---------------|-----------|
| 10 00-10 30 | 10 30-11 00 | 11 00-11 30 | 11 30-12 00 | 12 00-12 30 | 12 30-1 00 | 1 00-1 30 | 1 30-2 00 | 2 00-2 30 | 2 30-3 00 | 3 00-3 30 | 3 30-4 00 | 4 00-4 30 | 4 30-5 00 | 5 00-5 30 | 5 30-6 00 |
| | | | | | X | X | | | | | | | | | X |
| | | | | | | | | | | | | | | | |
| X | X | X | | X | | | X | | | | | | | | X |
| | | X | X | X | | | | | | | | | | | |
| | | | | | | | | X | X | | | | | | |
| | | | | | | | X | X | X | X | | X | | | |
| | | | | | | | | | | | | | | | |
| X | X | | | | | | | | | | | | X | X | X |
| | | | | | | | | | | | | | | | |
| | | | | | | | | | | | | | | | |
| | | | | | | | | | | | | | | | |
| | | | | | | | | | | | | | | | |
| | | | | | | | | | | | | | | | |
| | | | | | | | | | | | | | | | |
| | | | | | | | | | | | | | | | |
| | | | | | | | | | | | | | | | |
| | | | | | | | | | | | | | | | |
| | | | | | | | | | | | | | | | |
| | | | | | | | | | | | | | | | |
| | | | | | | | | | | | | | | | |
| | | | | | | | | | | | | | | | |
| | | | | | | | | | | | | | | | |
| | | | | | | | | | | | | | | | |
| | | | | | | | | | | | | | | | |
| | | | | | | | | | | | | | | | |
| | | | | | | | | | | | | | | | |
| | | | | | | | | | | | | | | | |
| | | | | | | | | | | | | | | | |
| | | | | | | | | | | | | | | | |
| | | | | | | | | | | | | | | | |
| | | | | | | | | | | | | | | | |
| | | | | | | | | | | | | | | | |
| | | | | | | | | | | | | | | | |
| | | | | | | | | | | | | | | | |
| | | | | | | | | | | | | | | | |
| | | | | | | | | | | | | | | | |
| | | | | | | | | | | | | | | | |
| | | | | | | | | | | | | | | | |
| | | | | | | | | | | | | | | | |
| | | | | | | | | | | | | | | | |
| | | | | | | | | | | | | | | | |
| | | | | | | | | | | | | | | | |
| | | | | | | | | | | | | | | | |
| | | | | | | | | | | | | | | | |
| | | | | | | | | | | | | | | | |
| | | | | | | | | | | | | | | | |
| | | | | | | | | | | | | | | | |
| | | | | | | | | | | | | | | | |
| | | | | | | | | | | | | | | | |
| | | | | | | | | | | | | | | | |
| | | | | | | | | | | | | | | | |
| | | | | | | | | | | | | | | | |
| | | | | | | | | | | | | | | | |
| | | | | | | | | | | | | | | | |
| | | | | | | | | | | | | | | | |
| | | | | | | | | | | | | | | | |
| | | | | | | | | | | | | | | | |
| | | | | | | | | | | | | | | | |
| | | | | | | | | | | | | | | | |
| | | | | | | | | | | | | | | | |
| | | | | | | | | | | | | | | | |
| | | | | | | | | | | | | | | | |
| | | | | | | | | | | | | | | | |
| | | | | | | | | | | | | | | | |
| | | | | | | | | | | | | | | | |
| | | | | | | | | | | | | | | | |
| | | | | | | | | | | | | | | | |
| | | | | | | | | | | | | | | | |
| | | | | | | | | | | | | | | | |
| | | | | | | | | | | | | | | | |
| | | | | | | | | | | | | | | | |
| | | | | | | | | | | | | | | | |
| | | | | | | | | | | | | | | | |
| | | | | | | | | | | | | | | | |
| | | | | | | | | | | | | | | | |
| | | | | | | | | | | | | | | | |
| | | | | | | | | | | | | | | | |
| | | | | | | | | | | | | | | | |
| | | | | | | | | | </ | | | | | | |

BREMER TULLY COUNTER PHASE EIGHT



"Bremer Tully's Greatest Achievement"

Dealers: Write for Franchise Application Blanks



10th Edition "Better Tuning" Now Out



Factory Representatives

McCLELLAND-FELTHOUSE
CORPORATION

1358-60 S. Figueroa St.

Los Angeles

WEstmore 5586, 6519

515-517 Eddy St.

San Francisco

Tel. Franklin 6226

FRIDAY TIME TABLE

ALL TIME TABLES ADJUSTED
TO PACIFIC TIME
(X) Indicates Station Is On the Air

| 10-12 A.M. | | 12-2 P.M. | | 2-4 P.M. | | 4-6 P.M. | | STATIONS | | | | 8-8 P.M. | | 8-10 P.M. | | 10-12 P.M. | | | | | | | | | | | | | |
|---------------|-------------|--------------|-------------|-------------|-------------|-------------|------------|------------|------------|------------|------------|-------------|------------|--------------|------------|---------------|------------|------------|-------------------|------------|------------|------------|------------|-------------|-------------|-------------|-------------|---|--|
| 10 00-10 30 | 10 30-11 00 | 11 00-11 30 | 11 30-12 00 | 12 00-12 30 | 12 30- 1 00 | 1 00- 1 30 | 1 30- 2 00 | 2 00- 2 30 | 2 30- 3 00 | 3 00- 3 30 | 3 30- 4 00 | 4 00- 4 30 | 4 30- 5 00 | 5 00- 5 30 | 5 30- 6 00 | 8 00- 8 30 | 6 30- 7 00 | 7 00- 7 30 | 7 30- 8 00 | 8 00- 8 30 | 8 30- 9 00 | 9 00- 9 30 | 9 30-10 00 | 10 00-10 30 | 10 30-11 00 | 11 00-11 30 | 11 30-12 00 | | |
| X | X | X | | | | | | | | | | | | | X | KFI | 467 | 4000 | Los Angeles | | X | X | X | X | X | X | X | | |
| | | | | | X | X | | | | | | | | | | KHJ | 405 | 500 | Los Angeles | | | X | X | X | X | X | X | | |
| X | | | | X | | | X | X | X | X | X | X | X | X | | KNX | 337 | 750 | Los Angeles | | X | X | X | X | X | X | | X | |
| | X | X | X | X | | | | | | X | X | X | X | | | KFSG | 275 | 500 | Los Angeles | | | X | X | X | X | X | | | |
| | | | | | | | | | X | X | | | | | | KTBI | 294 | 750 | Los Angeles | | X | X | X | X | X | | | | |
| | | | | | | | | X | X | X | | X | | | | KNRC | 238 | 1000 | Santa Monica | | | X | X | X | X | X | | | |
| | | | | | | | | | | | | | | | | KFWB | 252 | 500 | Hollywood | | X | X | X | X | X | X | X | | |
| | | | | | | | | | | | | | | X | X | KMTR | 370 | 500 | Hollywood | | X | X | X | X | X | X | X | X | |
| | | | | X | X | | | | | | | | | | | KFQZ | 226 | 500 | Hollywood | | X | X | | X | X | X | X | | |
| | | | | | | | | | | | | | | | | KPSN | 315 | 1000 | Pasadena | | X | | | | | | | | |
| | | | | | | | | | | | | | | | | KFWC | 211 | 100 | San Bernardino | | X | | | | | | | | |
| | | | | | | | | | | | | | | | | KFWO | 211 | 250 | Catalina | | X | X | X | | | | | | |
| | | | | X | X | | | | X | X | X | X | X | X | | KFON | 233 | 500 | Long Beach | | X | X | X | X | X | X | X | X | |
| | | | | | | | | | | | | X | X | X | | KFVD | 205 | 250 | Venice | | X | X | | X | X | X | X | X | |
| | | | | | | | | | | | | | | | | KFSD | 246 | 1000 | San Diego | | X | X | X | X | X | X | X | | |
| | | | | | | | | | | | | | | | | KFBC | 380 | 50 | San Diego | | | | | X | X | X | | | |
| | | | | X | X | X | X | | | | | | | | | AMB | 327 | 100 | Tijuana, Mex. | | | X | X | X | X | | | | |
| X | X | | | X | X | X | X | X | X | X | X | X | X | X | | KPO | 428 | 1000 | San Francisco | | X | X | X | X | X | X | X | X | |
| X | X | X | | | | | | X | X | X | X | | | | | KJBS | 220 | 5 | San Francisco | | | | | | | | | | |
| | | | | | | | | | | | | | | | | KFRC | 268 | 50 | San Francisco | | X | X | X | | X | X | X | | |
| | | | | | | | | | | | | | | | | KFWI | 250 | 500 | San Francisco | | X | X | X | X | X | X | X | X | |
| | | | | | | | | | | | | | | | | KSMR | 285 | 100 | Santa Maria | | | | X | X | | | | | |
| X | | | | | | | | | | | | | | | | KQW | 333 | 500 | San Jose | | X | X | X | X | X | X | | | |
| | | | | | | | | | | | | | | X | X | KTAB | 303 | 1000 | Oakland | | | X | | X | X | X | | | |
| | | | | X | X | X | X | | | | | | | | | KGO | 361 | 4000 | Oakland | | X | X | X | | | | | | |
| | | | | | | | | | | | | | | | | KLX | 508 | 500 | Oakland | | | X | | X | X | X | | | |
| X | X | | | | | | | | | | | | | | | KFUS | 256 | 50 | Oakland | | | | | X | X | | | | |
| | | | | | | | | | | | | | | | | KZM | 240 | 100 | Oakland | | X | | | | | | | | |
| | | | | | | | | | | | | | | | | KRE | 256 | 100 | Berkeley | | | | | | X | X | X | X | |
| | | | | | | | | | | | | | | | | KMJ | 234 | 50 | Fresno | | | | X | X | X | | | | |
| | | | | | | | | | | | | | | | | KFWH | 254 | 100 | Eureka | | X | | X | X | X | | | X | |
| X | X | X | | | | | | X | X | | | | | | | KGW | 491 | 1000 | Portland | | X | X | | X | X | X | X | X | |
| | | | | | | | | | | X | X | | | | | KOIN | 319 | 1000 | Portland | | | | X | X | X | X | | | |
| | | | | | | | | | | | | | | | | KOAC | 280 | 500 | Corvallis, Ore. | | | X | X | X | X | | | | |
| X | X | X | | | | | | | | X | X | | | | | KJR | 348 | 1000 | Seattle | | X | | | | X | X | X | | |
| X | | | | | | | | | | | | | | | | KOMO | 306 | 1000 | Seattle | | | X | X | X | X | | | | |
| | | | | | | | | | | | | | | | | KFOA | 454 | 1000 | Seattle | | X | X | X | X | X | X | X | X | |
| | | | | | | | | | | | | | | | | KFOX | 233 | 1000 | Seattle | | | | X | X | X | X | X | X | |
| X | X | | | | | | | | X | X | X | X | X | | | KMO | 250 | 500 | Tacoma | | | | | X | X | X | X | | |
| | | | | | | | | | | | | | | | | KHQ | 394 | 1000 | Spokane | | X | X | X | X | | X | X | X | |
| | | | | | | | | | | | | | | | | KOWW | 285 | 500 | Walla Walla | | | X | | X | X | X | X | X | |
| | | | | | | | | | | | | | | | | CNRV | 291 | 5000 | Vancouver, B. C. | | | X | X | X | X | X | X | | |
| | | | | | | | | | | | | | | | | CKCD | 410 | 2000 | Vancouver | | | | | X | X | | | | |
| | | | | | | | | | | | | | | | | CFAC | 436 | 2000 | Calgary | | | | | | | | | | |
| | | | | | | | | | | | | | | | | CFCA | 358 | 1000 | Toronto | | | | | | | X | X | X | |
| X | X | X | | | | | | | | | | | | | | KGU | 270 | 500 | Honolulu | | | | X | X | X | | | | |
| X | | X | X | X | X | | | | | | | | | | | WBAP | 476 | 1000 | Fort Worth | | X | | | X | X | X | X | | |
| | | | | | | | | | | | | | | | | KOA | 322 | 5000 | Denver | | X | X | X | X | X | | | | |
| | | | | | | | | | | | | | | | | KSL | 300 | 1000 | Salt Lake City | | | | | | | | | | |
| | | | | | | | | | | | | | | | | WOAW | 520 | 1000 | Omaha | | | X | X | | | | | | |
| | | | | | | | | | | | | | | | | WOC | 484 | 5000 | Davenport | | X | X | X | X | | X | X | | |
| | | | | | | | | | | | | | | | | KFKX | 288 | 5000 | Hastings, Neb. | | | X | X | | | | | | |
| X | X | | | | | | | | X | X | X | X | X | X | X | KYW | 535 | 3500 | Chicago | | | | X | X | X | | | | |
| X | | | | | | | | | | | X | X | X | X | X | KDKA | 309 | 1000 | Pittsburgh | | X | X | | | | | | | |
| | | | | | | | | | | | | | | | | WGY | 380 | 5000 | Schenectady | | X | X | | X | X | | | | |
| X | X | X | X | X | X | X | X | X | X | X | X | X | X | X | X | KMOX | 280 | 5000 | St. Louis | | | X | X | X | X | | | | |
| | | | | | | | | | | | | | | | | KTHS | 375 | 1000 | Hot Springs, Ark. | | | X | X | X | X | | | | |



"Just as if you were there!"

HERE is the Radio sensation of years---the Velvet "Jewel Case" Its grace of contour and quiet finish naturally blend into the most tasteful surroundings, and reproduction is so complete and natural that you lend yourself to the full enjoyment of the melody "just as if you were there!" Sales will reach unprecedented volume---for the public wants it! Write or wire for dealer or jobber franchise quick!

Sales Dept.,
The Zinke Co.,
1323 S. Michigan Ave.,
Chicago, Ill.

Price
\$45.00

Manufactured by
The Borkman Radio Corp.,
Salt Lake City, Utah
Kalamazoo, Mich.

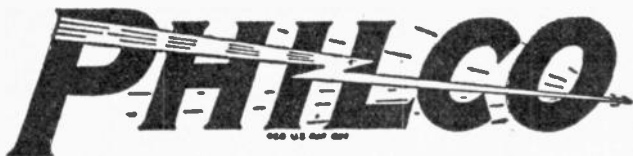
The "JEWEL CASE" Number 21

Velvet Radio Speakers

SATURDAY TIME TABLE

ALL TIME TABLES ADJUSTED
TO PACIFIC TIME
(X) Indicates Station Is On the Air

| | | | | STATIONS | | | 6-8 P.M. | | 8-10 P.M. | | 10-12 P.M. | | | | | | | | |
|------------|-----------|----------|----------|----------|--------------------|----------------|-------------------|------------|------------|------------|------------|------------|------------|------------|-------------|--------------|--------------|--------------|--------------|
| 10-12 A.M. | 12-2 P.M. | 2-4 P.M. | 4-6 P.M. | CALL | Wave Length Meters | Power in Watts | STATION | 6 00- 6 30 | 6 30- 7 00 | 7 00- 7 30 | 7 30- 8 00 | 8 00- 8 30 | 8 30- 9 00 | 9 00- 9 30 | 9 30- 10 00 | 10 00- 10 30 | 10 30- 11 00 | 11 00- 11 30 | 11 30- 12 00 |
| | | | | KFI | 467 | 4000 | Los Angeles | X | X | X | X | X | X | X | X | X | X | X | X |
| | | | | KHJ | 405 | 500 | Los Angeles | | X | X | X | X | X | X | X | X | X | X | X |
| X | | | | KNX | 337 | 750 | Los Angeles | X | X | X | X | X | X | X | X | X | X | X | X |
| | X | X | X | KFSG | 275 | 500 | Los Angeles | | X | X | X | X | X | X | X | X | X | X | X |
| | | | | KNRC | 238 | 1000 | Santa Monica | | | X | X | X | X | X | X | X | X | X | X |
| | | | | KFWB | 262 | 500 | Hollywood | X | X | | X | X | X | X | X | X | X | X | X |
| | | | | KMTR | 370 | 500 | Hollywood | X | X | X | X | X | X | X | X | X | X | X | X |
| | | | | KFQZ | 226 | 500 | Hollywood | X | X | | X | X | X | X | X | X | X | X | X |
| | | | | KPSN | 315 | 1000 | Pasadena | X | | | X | X | | X | X | X | X | X | X |
| | | | | KFWO | 211 | 250 | Catalina | X | X | X | X | | | | | | | | |
| | | | | KFON | 233 | 500 | Long Beach | X | X | X | X | X | X | X | X | X | X | X | X |
| | | | | KFVD | 205 | 250 | Venice | X | X | | X | X | X | X | X | X | X | X | X |
| | | | | KFSD | 246 | 1000 | San Diego | | X | X | X | X | X | X | X | X | X | X | X |
| | | | | KFBC | 300 | 50 | San Diego | | | | X | X | X | X | X | X | X | X | X |
| | | | | AMB | 327 | 100 | Tijuana, Mex. | | X | X | X | X | | | | | | | |
| | | | | KSMR | 285 | 100 | Santa Maria | X | X | X | X | X | | | | | | | |
| X | X | | | KPO | 428 | 1000 | San Francisco | X | X | X | X | X | X | X | X | X | X | X | X |
| | | | | KFRG | 288 | 50 | San Francisco | X | X | X | | X | X | X | X | X | X | X | X |
| X | X | X | | KJBS | 220 | 5 | San Francisco | | | | | X | X | X | X | X | X | X | X |
| | | | | KFWI | 250 | 500 | San Francisco | | | | | X | X | X | X | X | X | X | X |
| X | | | | KQW | 333 | 500 | San Jose | | X | X | | | | | | | | | |
| X | X | | | KFUS | 256 | 50 | Oakland | | | | | | | | | | | | |
| | | | | KTAB | 303 | 1000 | Oakland | | X | | | | | | | | | | |
| | | X | X | KGO | 361 | 4000 | Oakland | | | | | X | X | X | X | X | X | X | X |
| | | | | KZM | 240 | 100 | Oakland | | X | | | | | | | | | | |
| | | | | KLX | 508 | 500 | Oakland | | X | | | | | | | | | | |
| | X | | | KRE | 256 | 100 | Berkeley | | | | X | X | X | X | X | X | X | X | X |
| | | | | KFBK | 535 | 100 | Sacramento | | | | X | X | X | X | X | | | | |
| | | | | KMJ | 234 | 50 | Fresno | | | | | | | X | X | | | | |
| | | | | KFWH | 224 | 100 | Eureka | X | X | | | | | | | | | | X |
| X | X | X | | KGW | 491 | 1030 | Portland | X | X | | | | | | | X | X | X | X |
| | | | | KFJR | 263 | 50 | Portland | | | | | | | | | | | | |
| | | | | KOIN | 319 | 1000 | Portland | | | | | | | | | | | | |
| | | | | KFOA | 454 | 1000 | Seattle | | X | X | X | | X | X | | | | | |
| | | | | KOMO | 306 | 1000 | Seattle | | X | X | X | | | | | | | | |
| X | X | X | | KJR | 384 | 1000 | Seattle | X | | | | | | X | X | X | X | X | X |
| X | | | | KHQ | 394 | 1000 | Spokane | X | X | | | | | | | | | | |
| X | X | | | KMO | 250 | 500 | Tacoma | | | | | X | X | X | X | | | | |
| | | | | KOWW | 285 | 500 | Walla Walla | | X | | | | X | X | X | X | X | X | X |
| | | X | X | CFAC | 436 | 2000 | Calgary | | | | | | | | | | | | |
| | | | | CKCD | 410 | 2000 | Vancouver, B.C. | | | | X | X | | | | | | | |
| X | X | X | | WBAP | 476 | 1000 | Fort Worth | X | | X | X | X | | | | | | | |
| | | | | WOAI | 394 | 5000 | San Antonio | | | | | | | | | | | | |
| | X | | | WOC | 484 | 5000 | Davenport | X | X | | | | | | | | | | |
| | X | X | X | WSMB | 319 | 500 | New Orleans | | X | X | X | X | | | | | | | |
| | | | | KOA | 322 | 5000 | Denver | X | | | | | | | X | X | | | |
| | | | | KLZ | 384 | 500 | Denver | | X | X | | | | | | | | | |
| | | | | KFAU | 280 | 750 | Boise, Ida. | | X | X | | | | | | | | | |
| | X | X | X | KSL | 300 | 1000 | Salt Lake City | X | X | X | X | X | X | X | X | | | | |
| | | | | WOAW | 528 | 1000 | Omaha | | X | X | | | X | X | | | | | |
| | | | | WLW | 422 | 5000 | Cincinnati | X | X | | | | | | | | | | |
| X | X | | | KYW | 535 | 3500 | Chicago | X | X | X | X | | | | | | | | |
| X | | | | KDKA | 306 | 1000 | Pittsburgh | | | | | | | | | | | | |
| | X | X | | WGY | 780 | 5000 | Schenectady | | | | X | X | | | | | | | |
| | X | X | | KTHS | 375 | 15000 | Hot Springs: Ark. | | X | X | X | X | | | | | | | |
| X | | | | KMOX | 280 | 5000 | St. Louis | X | X | X | X | X | X | X | X | X | X | X | X |



SOCKET POWER

Yours on Very **EASY PAYMENTS**

Yes, you can now buy the famous Philco A and B Socket Powers from us on Easy Payments. You merely pay a small first payment and then you can pay the balance in the easiest of easy monthly payments. **THINK OF IT!** Now you can do away with dry-cell battery troubles, "B" batteries and the ordinary "A" storage battery. No more recharging to do; no more replacements.

Runs any Radio From Your Electric Current

With PHILCO A and B Socket Powers you can have A and B radio power as dependable and as constant as your electric current. It makes no difference what kind or what make of radio set you have, PHILCO Socket Powers will give you radio power smoothly and perfectly.

Trade In Your Old Storage Battery

It's a fact. It makes no difference what make of "A" storage battery you have. It makes no difference how old or worn out it may be; we will give you a very liberal trade-in allowance on your "A" storage battery on the purchase of a brand new guaranteed PHILCO AB Socket Power.

Installed on Your Radio Set FREE



Easy as turning on your electric light

One switch controls everything. Snap it on and from your house current you get a strong, steady flow of Radio A and B Power. Snap it off and your radio is silent. Operates any make of radio.

**Satisfaction
Guaranteed**

PHILCO SALES & SERVICE Co.

1514 South Hope St.

Phone WEstmore 9065

Open 8 a. m. to 9 p. m. except Sundays

**MAIL THIS
COUPON**

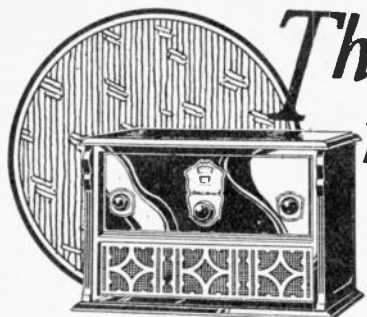
**or Phone
WE. 9065**

for FREE DEMON-
STRATION in your
home. It places you
under no obligation.

Name _____

Address _____

Make of Radio Set _____



Model 350—\$115.00
with built-in Reproducer—

Los Angeles

ATWATER RADIO & ELEC. CO.
3208 Glendale Blvd.

CHAPMAN HOUSE SALES CO.
4377-79 S. Figueroa St.

DEAN K. BARRIS
3100 S. Vermont Ave.

BIRONG & BUSHARD
1717 W. Adams St.

FRANK W. HASBROUCK
6511 S. Vermont

HARRY SAVOY
828 West Jefferson St.

HOLLAND ELECTRIC SHOP
5632 Pasadena Ave.

INTERPHONE ELECTRIC CO.
5510 Monte Vista St.

MANCHESTER RADIO CO.
1522 E. Manchester Ave.

MOHAWK BAT. & RAD. CO.
2115 Sunset Blvd.

NORTON & NORTON
2211 N. Broadway

POTTER RADIO SALES CO.
1817 W. 64th St.

THAYER ELECTRIC CO.
2908 Whittier Blvd.

WEST STATES ELECT. CO.
2510 West Pico St.

WEST STATES ELECT. CO.
4751 South Broadway

WOODS HDWE. & RADIO STORE
8215 So. Western Ave.

Hollywood Dealers

BARROWS & CONKWRIGHT
5545 Sunset Blvd.

DORAN'S ELECTRIC SHOP
7515 Sunset Blvd.

DORANS ELECTRIC SHOP
8030 Santa Monica Blvd.

H. D. HATFIELD & SON
1762 N. Vermont Ave.

Southern California Dealers

ALHAMBRA, LeRoy G. Franklin
644 W. Main

ANAHEIM, Bennett's Radio Shop
220 Center St.

ARTESIA, Wm. B. Hayes
325 N. Main St.

ATASCADERO, Newman T. Winter

BAKERSFIELD, Stewart-Warner
Sales & Service Station

2427 Chester Ave.

BREA, Bennett's Radio Shop
129 S. Pomona Ave.

BUELLTON, O. R. Skinner

CALEXICO, City Electric Co.
313 Second St.

CHINO, Woods Radio Company
413 Sixth St.

CHULA VISTA, Inskeep & Proster
347 Third Ave.

COMPTON, Model Electric Co.
138 E. Main St.

CORONADO, Coronado Radio Shop
1011 Orange Ave.

COVINA, Harold R. Houser
115 College St.

CULVER CITY, Culver City Radio &
Elec. Co.

6715 Washington Blvd.

EAGLE ROCK, Weaver & King
5112 Eagle Rock Blvd.

EL CENTRO, Bowles & Son
Seventh and Main Sts.

EL SEGUNDO,
110 Grand Ave.

EL MONTE, R.
El Monte Hs.

EL MONTE, W.
El Monte Hd.

ENCINITAS, L.

ESCONDIDO, D.
112 S. Kaimali

FILLMORE, H.

GARDENA, Dor
725 W. 165th

GLENDAL, W.
(Broadway)

202 E. Broad

GLENDORA, J.

HERMOSA BE,
Elec. Store

713 El Camin

HUNTINGTON
King

116 E. Irvingt

INDEPENDEN
Hdw. Co.

INGLEWOOD, I.
111 N. Market

LA JOLLA, Red
7462 La Jolla

LA MESA, La

LANCASTER, E

LONG BEACH,
& Service S

1118 American



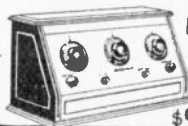
Model 405

\$20.00

Model 425-

\$26.50

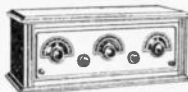
Reproducer ~



Model

305

\$97.50



Model 325—\$77.50



Model 300—\$67.50

Stewart-Warner 6-Tube receiver enclosed reproducer

and performance of these new 6 reproducing unit used in the models same as that used in the new Stewart-Warner development.

These Stewart-Warner dealers demonstrate rather have a two or three dial type also in the Stewart-Warner



**Model 345 — \$82.50 with the
New Model 415 Reproducer \$31.50**

W. McAllister

J. Weaver
Radio Co.

er & King
Co.

k Rosen

ich's Electric Shop

oad Elec. Co.
ears

rd Holman
o.)

e M. Reed

t. Calif. Radio &

deal

RK, H. L. (Radio)

St.

Inyo Fur. &

D. Aylsworth

g & White

Radio Studio

A. Knopf

Stewart-Warner Sales

ion

wa.

LONG BEACH, The Electric Radio Co.
1719 E. Anaheim

LYNWOOD, Lynwood Elec. Co.
204 N. Long Beach Blvd.

MONTEREY PARK, Monterey Park Music Co.
102 E. Garvey St.

NEWHALL, C. E. Graham

OCEAN PARK, Crescent Tire and Supply Co.
Bay and Main Sts.

OCEANSIDE, Dudley L. Axe
Second St.

ORANGE, Roy Des Larzes
143 N. Glassell St.

PACIFIC BEACH, James R. Ramsey

PALMS, T. B. Brickell
12204 Washington Blvd.

PASADENA, Premier Radio
11 California St.

PASADENA, Premier Radio Co.
Athletic Club Bldg.

PASO ROBLES, R. C. Heaton

POMONA, George W. Hiett
183 E. 3rd St.

REDLANDS, J. L. Yount
106 W. Citrus Ave.

SAN BERNARDINO, Gurr, Smith & Gurr
439 Fourth St.

SAN DIEGO
Stewart-Warner Radio Sales Co.
411 "C" St.
"Radio Smith,"
1241 28th St.

"Better Radio"
2855 University Ave.

Glen H. Dutton.
3855 Van Dyke
Guy H. Parmenter,
2723 San Diego Ave.

SAN FERNANDO, Willis Rowe

SAN GABRIEL, Murphy & Hendricks
243 S. San Gabriel Blvd.

SAN LUIS OBISPO, Cline Elec. Co.
986 Monterey St.

SANTA ANA, Shafer's Music Store
415 N. Main St.

SANTA BARBARA, Val Felger
732 State St.

SANTA MARIA, Ford & Smart
118 E. Main St.

SANTA MONICA, J. C. Suite
825 Wilshire

SANTA PAULA, The Music Shop
104 W. Main St.

SATICOY, H. H. Wright
6th and D Sts.

SHAFTER, Henry C. Neufeld
TAFT, Woodall & Bird
610 Center Street

UPLAND, Jay M. Ross

VENICE, Stewart-Warner Radio
Studio
1029 Washington Blvd.

VENTURA, Richardson Co.
Main St. and Ventura Blvd.

WESTMINSTER, Martin Engel

WHITTIER, H. C. Oldham
128 S. Greenleaf

WILMINGTON, G. F. Clausung
716 W. Anaheim St.

Stewart-Warner Products Service Station

{ Wholesale Distributors Stewart-Warner Radio }

66 South Figueroa Street ~ LOS ANGELES

811 Front Street (near "F") ~ SAN DIEGO

Radio
Tubes -
\$2.00
each





LESLIE ADAMS
Announcer

Los Angeles, California—467 Meters

KFI

4000 WATTS—840 KILOCYCLES

Radio Central Super-Station of Earle C. Anthony, Inc.
1000 S. Hope St. Phone WE. 0331. After 6 P. M., WE. 0337
Class "B" 5000-Watt W. E. Station, Operating on 4000 Watts
ROBERT HURD, Program Manager

DAILY EXCEPT SUNDAY—

- 5:30 p. m.—Musical Program.
- 6:00 p. m.—KFI Nightly Doings.
- 6:15 p. m.—KFI Radio Travel Guide.
- 6:30 p. m.—Musical Program.
- 6:45 p. m.—KFI Radiatorial Period.

MONDAY, WEDNESDAY AND FRIDAY:

- 10:20 to 11:30 a. m.—KFI Woman's Dept., direction Agnes White.

WEEK COMMENCING SUNDAY, OCTOBER 24, 1926

SUNDAY, OCTOBER 24—

- 10:00 a. m.—Church Services, direction of L. A. Church Federation.
- 4:00 p. m.—Bethel Temple Young People, direction Carl Edward Hatch.
- 6:30 p. m.—KFI Nightly Doings.
- 6:45 p. m.—Music Appreciation Chat and Father Ricard's Sun Spots.
- 7:00 p. m.—Jack Smith and his Dance Orchestra.
- 8:00 p. m.—Aeolian Organ Recital; John Rhys Thomas, tenor.
- 9:00 p. m.—Louise Homer, contralto, from Metropolitan and Chicago Opera Companies, presented by Ray Thomas, Inc., Los Angeles, Distributors for So. Calif., and Ernest In-gold, Inc., San Francisco, Distributors for No. Calif. of Atwater Kent Receiving Sets. Broadcast simultaneously by KFI and KPO.
- 10:00 p. m.—Packard Six Orchestra, Bill Hennessy, director.

MONDAY, OCTOBER 25—

- 7:00 p. m.—Owen Fallon and his Californians; Clarice Russell, soloist.
- 8:00 p. m.—Louise Klos, harpist and soprano; Evelyn Pickrell, violinist; Emma Kimmel, soprano.
- 9:00 p. m.—Program by Walter M. Murphy Motors Co., Los Angeles, and Stanley W. Smith, Inc., San Francisco. Virginia Flohri, soprano; Claribel Patten Wallace; Gamut Male Quartet and Heinrich Tandler String Quartet; Will Garroway, accompanist. Broad-cast simultaneously by KFI, Los Angeles, and KPO, San Francisco.
- 10:00 p. m.—Program by Meiklejohn Bros.

TUESDAY, OCTOBER 26—

- 7:00 p. m.—Paul Howard's Quality Serenaders.
- 8:00 p. m.—Screen Artists Quartet; Eugene Petrovsky, tenor.
- 9:00 p. m.—Truth Tyler Plock, pianist; LeRoy Ressler, baritone; Flo Ellsworth, soprano.
- 10:00 p. m.—Azure Music Club; Clarice Russell, blues singer; Pat Lynn and his banjo-uke; Betty Arden, KFI Girl.

WEDNESDAY, OCTOBER 27—

- 7:00 p. m.—Virginia Ballroom Orchestra.
- 7:30 p. m.—Nick Harris, Detective Stories; Frank Barry, tenor.
- 8:00 p. m.—California Petroleum Corporation Program; Paul Roberts, Calpet Male Quartet, Calpet Trio.
- 9:00 p. m.—Navy Day Program; Rear Admiral Wm. W. Phelps, speaker.
- 10:00 p. m.—Sunset Instrumental Quartet; Dorothy Ruth Miller, pianist; Ernest Burley, tenor.

THURSDAY, OCTOBER 28—

- 7:00 p. m.—Program by University of Southern California.
- 8:00 p. m.—KFI Drama Hour.
- 9:00 p. m.—Louise Klos Trio; Alma Frances Gordon.
- 10:00 p. m.—Johnston & Farrell's Music Box Hour, direction of Gene Johnston; Jim, Jack and Gene Trio, and soloists.

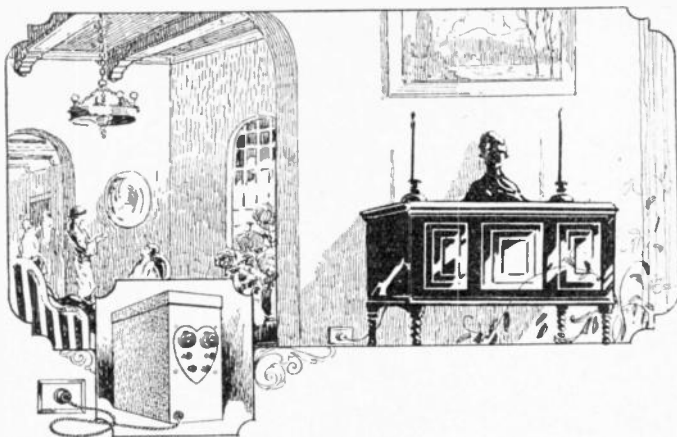
FRIDAY, OCTOBER 29—

- 7:00 p. m.—S. R. Lloyd, pianist; Virginia McCoy, contra-contralto; Baron Keyes, song writer.
- 8:00 p. m.—Aeolian Organ Recital; Alex Reilly at the console; Louise Klos, soprano.
- 9:00 p. m.—Sylvia Zeitlan Rosenthal, concert pianist; Margaret Melrose, coloratura so-prano; De Etta Miller, accompanist.
- 10:00 p. m.—Packard Ballad Hour; Irene Wynn, contralto; J. Maurice Woods, baritone; Ruth and Dolores Palethorpe.

SATURDAY, OCTOBER 30—

- 2:30 p. m.—Football Game—Stanford vs. University of Southern California.
- 7:00 p. m.—Program by Paul Roberts.
- 8:00 p. m.—Program by the Los Angeles Soap Company.
- 9:00 p. m.—Associated Packard Dealers of California Program. Gretchen Garrett, so-prano; Screen Artists Quartet; Ralph Reily, tenor. Broadcast simultaneously by KFI and KPO.
- 10:00 p. m.—Packard Radio Club; Dorothy Cleveland; Betty Arden, KFI Girl; Pat Lee and Red Wyatt and his Uke.
- 11:00 p. m.—KFI Midnight Frolic.

Copyright, 1926, Earle C. Anthony, Inc.



The IDEAL "B" POWER for Western conditions

OPERATE your radio from the light socket with VELVETONE, the "B" Battery Eliminator especially designed to meet the severe conditions of western radio reception. VELVETONE furnishes abundant smooth "B" power at all times—never runs down. An exclusive filtering process prevents all current hum and distortion. Uses no rectifying tubes, has no parts to burn out or wear out—will last indefinitely. Guaranteed to operate *any* receiving set satisfactorily, or money refunded.

VELVETONE gives more power and improves the tonal quality of all reception. And think of the convenience and economy! Nothing to do but turn the light switch. Have your dealer demonstrate the new radio enjoyment with this improved "B" battery eliminator. Price \$31.95 installed complete.

This Table Shows Velvetone Output

| Load | Voltage | Load | Voltage | Load | Voltage | Load | Voltage |
|----------|---------|----------|---------|----------|---------|----------|---------|
| 10 Mils. | 166 | 30 Mils. | 130 | 50 Mils. | 104 | 70 Mils. | 80 |
| 20 Mils. | 146 | 40 Mils. | 116 | 60 Mils. | 90 | 80 Mils. | 70 |

VELVETONE PRODUCTS ARE NATIONALLY ADVERTISED

VELVETONE

"B" BATTERY ELIMINATOR

The Heart of the Radio



"Uncle John" Daggett
Announcer

Los Angeles, California—405.2 Meters

KHJ

500 WATTS—740 KILOCYCLES
Times Bldg., First and Broadway, Los Angeles.
Owned and operated by Los Angeles Times.
JOHN S. DAGGETT, Manager and Program Arranger.
E. K. BARNES, Assistant Manager.
Phone MEt. 0700

"Kindness, Happiness and Joy"

DAILY EXCEPT SUNDAY—

12:30 to 1:30 p.m.—Program of Dance Music. News Items.

DAILY EXCEPT SUNDAY AND MONDAY—

7:30 p.m.—Scripture reading.

DAILY EXCEPT MONDAY—

6:00 to 6:30 p.m.—White King Quartet.

WEEK COMMENCING SUNDAY, OCTOBER 24, 1926

SUNDAY, OCTOBER 24—

10:00 a.m.—Sermon from the KHJ studio by Mrs. Leila Castberg.

10:30 a.m. to 12:30 p.m.—Services from the First M. E. Church, Arthur Blakeley, organist.

7:00 to 8:00 p.m.—Services from the First M. E. Church.

8:00 to 10:00 p.m.—News items. Program including Frederick MacMurray, viola; Orpheus Four Male Quartet, and others.

TUESDAY, OCTOBER 26—

2:30 p.m.—Auction Bridge.

6:30 to 7:30 p.m.—Children's Hour. Weekly visit of the Radio Fairies, Queen Titania and her Sandman.

7:40 p.m.—Talk on "Dogs," by H. M. Robertson.

8:00 to 9:00 p.m.—Program by So. Calif. Women's Press Club.

9:00 to 10:00 p.m.—Harry James Beardsley, Ethel Glasmann Clark, and others.

10:00 to 11:00 p.m.—Dance music by the Los Angeles Railway Orchestra.

WEDNESDAY, OCTOBER 27—

2:30 p.m.—Talk on "Gardens," by Fred C. McNabb.

6:30 to 7:30 p.m.—Children's program, including Dick Winslow; Vivian Marple, "Blue Bell of KHJ;" Glenn Fitz; Lois Jane Campbell, "Brown Eyes;" Patricia Eccleston, "Little Daffodil;" Constance Jeanette McCoy, "Sweet Marie;" saxophone pupils of Kathryn Thompson.

7:40 p.m.—Dr. Mars Baumgardt will lecture on "Astronomy."

8:00 to 10:00 p.m.—Patriotic program in honor of "Navy Day."

10:00 to 11:00 p.m.—Dance music by Jerry Grant and his orchestra.

THURSDAY, OCTOBER 28—

6:30 to 7:30 p.m.—Children's program, including Dickie Brandon; Jeanne De Bard, "Little Preacher;" Joyce Coad, "Little Red Riding Hood;" Ida Palmer; Nancy Nolen, pupil of Winifred Pollard, and others.

7:40 p.m.—Dr. Philip M. Lovell will give "Care of the Body."

8:00 to 10:00 p.m.—Program presenting the Zoellner Quartet, and others, 9 p. m. Arthur Edwin Wake, assistant pastor of Wilshire Presbyterian Church, will speak.

10:00 to 11:00 p.m.—Virginia Hemenway's Harmony Girls.

FRIDAY, OCTOBER 29—

6:30 to 7:30 p.m.—Children's hour. Program presenting Marguerite Bringham, "Night-ingale;" Roberta Bush, "Firefly of KHJ;" Billy Lord, "Police Comrade;" Margaret Bond, Clyvus Holland, and others.

8:00 to 10:00 p.m.—Program under the auspices of the Long Beach Exchange Club. 9:00 p. m. Mrs. Willoughby Rodman will speak.

10:00 to 11:00 p.m.—Dance music by Al Johnson's Marigold Gardens Orchestra.

SATURDAY, OCTOBER 30—

1:30 to 2:00 p.m.—Art Pabst, "Pacific Electric Art."

6:30 to 7:30 p.m.—Children's program, including Dolly Wright; Arthur Stevens, "King Arthur;" "Baby Blossom" West, reader.

8:00 to 10:00 p.m.—News items. Program presenting Benjamin Sears, Karl Brandenburg, tenor, and others.

THE RADIO BUYERS' GUIDE CONTAINING LIST OF ALL RADIO PRODUCTS
HANDLED ON PACIFIC COAST AND BY WHOM HANDLED, OUT NOV. 1ST.

\$1

RADIO BATTERIES RECHARGED RENTAL BATTERIES FURNISHED

Called For and Delivered—Within 4-Mile Radius
Small Added Charges over 4 Miles

LU DLUM & STEELE, Willard Dealers

965 Venice Blvd.

Call Westmore 6974

Los Angeles

\$1

The KEMPER RADIO LABORATORIES

Have now perfected and put on the market
Their first Cabinet Set known as

The KEMPER AMPLIPHONIC

No aerial

no ground

no Batteries

The price is exceptionally low due to our selling plan

*Direct from the Factory
to You*

The Kemper Ampliphonic can be heard either at
the factory or at the Biltmore Arcade Shoppe

KEMPER RADIO LABORATORY

1236 Santee St.

Los Angeles

WEstmore 2504



Harold Isbell
Announcer

Hollywood, California—337 Meters

KNX

500 WATTS—890 KILOCYCLES
LOS ANGELES EVENING EXPRESS
Paul G. Hoffman's Studebaker Building, 6116 Hollywood
Blvd., Hollywood. Phone HO. 4603
NAYLOR ROGERS, Manager and Program Director
GLEN RICE, Asst. Manager
"The Voice of Hollywood"

DAILY EXCEPT SUNDAY—

- 7:30 a.m.—KNX morning gym.
- 8:00 a.m.—Inspirational talk and morning prayer.
- 8:55 a.m.—Time signals.
- 9:00 a.m.—Radio Shopping News, conducted by Carrie Preston Rittmeister.
- 10:00 a.m.—Town Crier of the Day's morning message.
- 10:30 a.m.—Kate Brew Vaughn, except Friday and Saturday.
- 12:00 m.—George Redman's Orchestra.
- 1:30 p.m.—The Book Worm.
- 4:55 p.m.—Market reports.
- 5:30 p.m.—George Redman's Orchestra, through the courtesy of Jel-X-Cell Co.
- 6:00 p.m.—The Town Tattler.
- 6:30 p.m.—Atwater Kent Orchestra, courtesy Ray Thomas, Inc.

WEEK COMMENCING SUNDAY, OCTOBER 24, 1926

SUNDAY, OCTOBER 24—

- 10:00 a.m.—First Presbyterian Church of Hollywood, Rev. Stewart P. MacLennan.
- 2:00 to 4:00 p.m.—City Park Board musical program.
- 4:30 p.m.—Half hour of Cinema Chit-chat by Helene Sullivan.
- 6:30 p.m.—First Unitarian Church.
- 7:00 p.m.—First Presbyterian Church of Hollywood, Rev. Stewart P. MacLennan.
- 8:00 p.m.—Circle Theatre Concert Orchestra.
- 9:00 p.m.—Feature program.

MONDAY, OCTOBER 25—

- 2:00 p.m.—Paul Hugon.
- 3:00 p.m.—Little Jean and the Town Crier of the Day.
- 4:30 p.m.—Blue Monday Frolic—Howard Clark.
- 7:00 p.m.—Pacific Palisades Association courtesy program.
- 7:30 p.m.—Playlet, courtesy Overell Furniture Company.
- 8:00 p.m.—Luboviski Trio, courtesy L. W. Stockwell Company.
- 9:00 p.m.—Feature program.
- 10:00 p.m.—Ray West's Alexandria Hotel Orchestra, courtesy of M. Weinstein.
- 11:00 p.m.—Hotel Ambassador; Abe Lyman's Coconut Grove Orchestra.

TUESDAY, OCTOBER 26—

- 4:00 p.m.—Louise Howatt, contralto.
- 7:00 p.m.—Dearden's Furniture Co. courtesy program; Chet Mittendorf's Merrymakers.
- 8:00 p.m.—Builders' Finance Association courtesy program.
- 9:00 p.m.—Western Auto Supply Co. courtesy program.
- 10:00 p.m.—Hotel Ambassador; Abe Lyman's Coconut Grove Orchestra.

WEDNESDAY, OCTOBER 27—

- 2:00 p.m.—Walter Butterly, baritone, accompanied by Herb Henning.
- 3:00 p.m.—Musical readings by Claire and Pierre Mellonino.
- 4:00 p.m.—Talk on Care of Children, by Dr. Wayne B. Burr.
- 7:00 p.m.—Wilson Packing Co. courtesy program.
- 8:00 p.m.—Stewart-Warner Radio Dealers of Southern California courtesy program.
- 9:00 p.m.—El Sereno Country Club courtesy program; El Sereno Country Club Orchestra.
- 10:00 p.m.—Edgewater Club Orchestra by remote control from Santa Monica.
- 11:00 p.m.—Hotel Ambassador; Abe Lyman's Coconut Grove Orchestra.

THURSDAY, OCTOBER 28—

- 11:00 a.m.—Nature Talk, courtesy Marvel Ant Gelatine Co.
- 7:00 p.m.—Carthay Circle Theatre organ recital by Fred Scholl.
- 8:00 p.m.—Paige-Jewett Motor Company program.
- 9:00 to 10:00 p.m.—Don P. Smith Inc. courtesy program.
- 10:00 p.m.—L. A. District Federation of Women's Clubs program.
- 11:00 p.m.—Hotel Ambassador; Abe Lyman's Coconut Grove Orchestra.

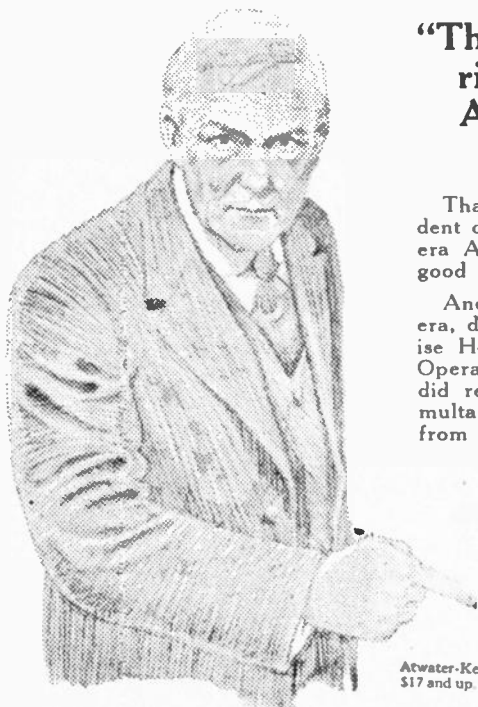
FRIDAY, OCTOBER 29—

- 2:00 p.m.—L. A. District Federation of Women's Clubs musical program.
- 3:00 p.m.—Reading by Edward Murphy.
- 4:00 p.m.—Boy Scouts' Musical Program.
- 7:00 p.m.—Feature program.
- 8:00 p.m.—Russell-Pierce Furniture Co. courtesy program.
- 9:00 p.m.—Davis Perfection Bread Co. courtesy program.
- 11:00 p.m.—Hotel Ambassador; Abe Lyman's Coconut Grove Orchestra.

SATURDAY, OCTOBER 30—

- 1:00 p.m.—Town Crier of the Day and his pals.
- 2:30 p.m.—Broadcasting the Football Game through the courtesy of the California Crushed Fruit Co.
- 7:30 p.m.—Luna Park courtesy program.
- 9:00 p.m.—Rondith Corporation courtesy program.
- 10:00 p.m.—Hotel Ambassador; Abe Lyman's Coconut Grove Orchestra.
- 11:00 p.m.—Saturday Night Frolic from the Studio of KNX.

ATWATER KENT RADIO



Judge B. F. Bledsoe
President of the
Los Angeles Grand
Opera Association

Every evening from
6:30 to 7:00 the At-
water Kent Orchestra is
on the air over KNX.

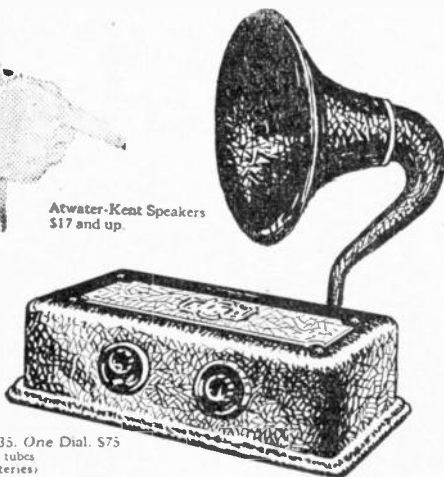
**"The one thing supe-
rior to O. K. is an
A. K."**

Judge B. F. Bledsoe.

That is the opinion of the Presi-
dent of the Los Angeles Grand Op-
era Association, who surely knows
good music reproduction.

And speaking of the Grand Op-
era, don't forget that Madame Lou-
ise Homer, world-famous contralto
Opera Star, will broadcast a splen-
did recital over KFI and KPO si-
multaneously, next Sunday, Oct. 24,
from 9 to 10:15 p. m.

Atwater-Kent Speakers
\$17 and up.



Model 35. One Dial. \$75
(without tubes
and batteries)

RAY THOMAS, INC.

Atwater Kent Distributor

1248 South Hope St.

Los Angeles, Cal.

WEStmore 6334



Charlie Wellman
Announcer

Hollywood, California—252 Meters

KFWB

500 WATTS—1180 KILOCYCLES
WARNER BROS. MOTION PICTURE STUDIOS
Warner Bros. West Coast Studio—5842 Sunset Blvd.
CHARLIE WELLMAN, Manager. Phone GL. 9461
"Movie Land"

DAILY EXCEPT SUNDAY—

6:00 to 7:00 p.m.—Pontiac Six Dinner Hour.

8:00 to 8:10 p.m.—News Items.

10:10 to 11:00 p.m.—Warner Bros. Frolic

MONDAY, TUESDAY AND WEDNESDAY—

5:00 to 6:00 p.m.—Children's Hour by Big Brother.

WEEK COMMENCING SUNDAY, OCTOBER 24, 1926

SUNDAY, OCTOBER 24—

9:00 to 11:00 p.m.—Frances St. George, Albert Keglovich, Dan Gridley, June Parker, Edward Novis, Nell Larson, Warner Bros. Syncopators and others.

MONDAY, OCTOBER 25—

8:00 to 9:00 p.m.—Program presented by courtesy of The Sealy Company, featuring Raquel Nieto, Frances St. George, the Sealy String Trio, the Sealy Tuftless Mattress Orchestra, Edward Novis.

9:00 to 10:00 p.m.—Edward Novis, Ann Grey, Art Pabst and his banjo, Bill Hatch and his orchestra.

TUESDAY, OCTOBER 26—

8:00 to 9:10 p.m.—Ina Mitchell Butler, Kenneth Gillum, Peggy Mathews, Bill Hatch and his orchestra.

9:10 to 10:10 p.m.—Albert Keglovich, Edward Novis, June Parker, Bill Hatch and his orchestra.

WEDNESDAY, OCTOBER 27—

8:00 to 9:00 p.m.—Julius H. Phillips, Frances St. George, Bill Hatch and his orchestra.

9:10 to 10:10 p.m.—June Parker, Dan Gridley, Ray Kellogg and Bill Hatch, Bill Hatch and his orchestra.

THURSDAY, OCTOBER 28—

8:00 to 9:00 p.m.—Program by courtesy of John Wright, the Right Tailor, featuring Hatch Graham and his banjo, Frances St. George, Ray Kellogg and Bill Hatch, Charlie Wellman, the John Wright Orchestra, Raquel Nieto.

9:00 to 10:00 p.m.—Ina Mitchell Butler, Dan Gridley, June Parker, Warner Bros. Trio and Bill Hatch and his orchestra.

FRIDAY, OCTOBER 29—

8:00 to 9:00 p.m.—Program presented by courtesy of Bert Farrar, Inc., featuring Raquel Nieto, Ray Kellogg, Bill Hatch, Charlie Wellman, the Chevy Chase Orchestra.

9:00 to 10:00 p.m.—Julius H. Phillips, Peggy Mathews, Armand Girola, Bill Hatch and his orchestra.

SATURDAY, OCTOBER 30—

8:00 to 9:00 p.m.—Program presented by courtesy of the Mona Motor Oil Company, featuring Peggy Mathews, Ray Kellogg and Bill Hatch, Charlie Wellman, and the Mona Motor Oil Company Orchestra.

9:00 to 10:00 p.m.—Julius H. Phillips, Ann Grey, Bill Hatch and his orchestra, and others.

DEALERS: SEND US YOUR NAME AND WE WILL MAIL YOU FREE A COPY OF THE RADIO BUYERS' GUIDE, OUT NOVEMBER 1ST.

WEEK-END SPECIAL

ATWATER KENT \$99⁸⁵

Complete—Nothing Else to Buy—Pay \$5 Month

WHAT YOU GET—Set Model 19, R.C.A. Tubes, Hobbs Storage Battery, Burgess "Bs," Atwater Kent Speaker, Aerial and Ground Wire, Etc.

STARR PIANO CO.

630 So. Hill

OPEN
EVENINGS

L. A. MUSIC CO.

4410 So. Broadway

Norman D. Sturges

Radio Batteries

for Better and Longer Life



"The ideal dry battery for radio use must be noiseless and long-lived. Sturges Radio Batteries are made of specially-compounded ingredients, so that they shall be ideal."

Norman D. Sturges

Manufactured and Guaranteed by
Sturges Multiple Battery Corporation
Jamaica, New York

Southern California Distributors

MYERS ELECTRIC SUPPLY CO.,
1727 S. Los Angeles St., Los Angeles

BAKER ELECTRIC CO.
12th and Los Angeles Sts., Los Angeles

COAST ELECTRIC CO.
744 G St., San Diego, Calif.

AYLSWORTH & ROBINSON,
207 E. 15th St., Los Angeles

GREAT WEST ELECTRIC CO.,
1149 Santee St., Los Angeles

CALIFORNIA WHOLESALE ELEC. CO.
413-15 E. 11th St., Los Angeles

Pacific Coast Branch

DON TAYLOR SALES COMPANY

Factory Representation

3023 South Grand Ave., Los Angeles

Los Angeles Warehouse Stock, 1817-1855 Industrial Street



Gladwyn N. Nichols
Announcer

Los Angeles, California—275.1 Meters

KFSG

500 WATTS—1090 KILOCYCLES
ANGELUS TEMPLE, ECHO PARK. Phone DR. 2560
AIMEE SEMPLE MCPHERSON, Founder, President
ESSIE BINKLEY, Program Manager
ESTHER FRICKE GREENE, Organist
GLADWYN N. NICHOLS, Musical Director and Announcer
"Four-Square Gospel"

DAILY EXCEPT SUNDAY AND MONDAY—

10:30 to 11:30 a. m.—Sunshine Hour.

11:30 a. m. to 12:30 p. m.—Noonday Musical.

DAILY EXCEPT SUNDAY, WEDNESDAY AND SATURDAY—

2:30 to 3:30 p. m.—Gray Studio program.

WEEK COMMENCING SUNDAY, OCTOBER 24, 1926

SUNDAY, OCTOBER 24—

0:30 a. m. to 12:30 p. m.—Morning worship, Temple Auditorium, by Aimee Semple McPherson.

2:30 to 4:30 p. m.—Afternoon dispensational service by Aimee Semple McPherson.

6:45 to 8:00 p. m.—Musical Hour. Temple band and choir.

8:00 to 9:30 p. m.—Revival service by Aimee Semple McPherson.

10:00 to 1:00 p. m.—Music Lovers' hour.

TUESDAY, OCTOBER 26—

3:30 to 4:30 p. m.—Vesper Hour. Organ recital by Barnest Ballard.

6:30 to 7:30 p. m.—Angelus Hour. Bible School band and soloists.

7:30 to 9:30 p. m.—Services by student evangelists.

WEDNESDAY, OCTOBER 27—

2:30 to 5:30 p. m.—Divine healing services by Aimee Semple McPherson.

6:30 to 7:30 p. m.—Angelus Hour. Organ recital by B. Earnest Ballard.

7:30 to 9:30 p. m.—Mid-week prayer service by Aimee Semple McPherson.

THURSDAY, OCTOBER 28—

3:30 to 4:30 p. m.—Vesper Hour. Organ recital by B. Earnest Ballard.

6:30 to 7:30 p. m.—Angelus Hour. Program arranged by ohn Kennedy.

7:30 to 9:15 p. m.—Water baptismal service by Aimee Semple McPherson.

9:15 to 10:00 p. m.—Gray studio program.

10:00 to 11:00 p. m.—Back Home Hour. Angelus Temple Band.

FRIDAY, OCTOBER 29—

3:30 to 4:30 p. m.—Vesper Hour. Organ recital by Esther Fricke Greene.

6:30 to 7:30 p. m.—Angelus Hour.

7:30 to 9:30 p. m.—Crusaders' Rally by Sister McPherson.

SATURDAY, OCTOBER 30—

3:30 to 4:30 p. m.—Children's Happy Hour.

6:30 to 7:30 p. m.—Angelus Hour. Organ recital by B. Earnest Ballard.

7:30 to 9:30 p. m.—Divine healing service by Aimee Semple McPherson.



Mr. E. Carrier
Announcer

Los Angeles, California—294 Meters

KTBI

750 WATTS—1020 KILOCYCLES
BIBLE INSTITUTE OF LOS ANGELES
MR. M. E. CARRIER, Manager
PROF. H. G. TOVEY, Director of Programs
Phone, ME. 6701

DAILY EXCEPT SUNDAY—

8:30 to 9:00 a. m.—Devotional Hour

2:00 to 3:00 p. m.—Inspirational Hour.

DAILY EXCEPT FRIDAY AND SUNDAY—

7:15 to 8:00 p. m.—Aunt Martha's Children's Hour.

WEEK COMMENCING SUNDAY, OCTOBER 24, 1926

SUNDAY, OCTOBER 24—

10:00 a. m. to 12:30 p. m.—Regular Service of the Church of the Open Door.

6:00 to 7:00 p. m.—Radio vesper service. Sermon by Rev. Henry J. Hutchins.

MONDAY, OCTOBER 25—

8:00 to 9:00 p. m.—Musical program arranged by Bessie D. Cornell.

TUESDAY, OCTOBER 26—

8:00 to 9:00 p. m.—Musical program

WEDNESDAY, OCTOBER 27—

8:00 to 9:00 p. m.—Musical program by Southwestern College of Music.

THURSDAY, OCTOBER 28—

8:00 to 9:00 p. m.—Rol Benner, violinist, Pasadena, will direct a musical program.

FRIDAY, OCTOBER 29—

6:15 to 7:00 p. m.—Aunt Martha's children's program.

7:00 to 8:00 p. m.—Exposition of International Sunday School lesson

8:00 to 9:00 p. m.—Musical program arranged by J. Oliver Erison of Long Beach.

Let Us Bring Your TONE QUALITY Up-to-date

If your radio set doesn't measure up to the standards of production set by the more modern instruments, don't discard it; let us modernize your amplification. We positively guarantee to improve the quality of your reception by bringing your amplifier up to date. Have this improvement to your set made by us. We are amplification experts.

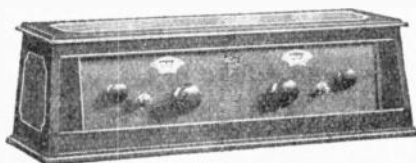
Average Price for This Service, \$18.50

E. E. EAGLES

Call Washington 9588—We Call for Your Set
704 Sunset Blvd. Los Angeles

For RELIABLE RECEPTION

The Valleytone Radio Receiver, Model No. 52, is a 5-tube tuned radio frequency receiver, which employs the exclusive Valley potential balance method of suppressing oscillation and preventing distortion. Two-dial control; antenna control for improving selectivity on crowded lower wave lengths and increasing volume on higher wave lengths; power tube wiring which makes the use of a power tube optional at the desire of the user.



Model 52—\$96

Price \$96.00

The Valley Twin Bulb Charger operates at $2\frac{1}{2}$ ampere rate with one bulb and at 5 amperes with two bulbs. Use of second bulb is optional. Absolutely noiseless.

List price, \$16.50, without bulbs

VALLEY ELECTRIC COMPANY

ST. LOUIS, MO.

Pacific Coast Representative

WESTERN STATES SALES CO.

286 Chronicle Bldg.
San Francisco

445 San Fernando Bldg.
Los Angeles





Charles W. Hamp
Announcer

Hollywood, California—370.2 Meters

KMTR

500 WATTS
ECHOPHONE RADIO MFG. CO.
1025 North Highland Avenue. Telephone HOLLY 3026
OLIVER S. GARRETSON, Technical Engineer
Portable Broadcast Station 6XBA
FREEMAN LANG, Field Engineer
"Echoes of the World"

DAILY EXCEPT SUNDAY—

6:00 to 7:00 p. m.—Radio Press Agents Hour.

10:00 p. m. to 12:00 midnight—Dance Music from Palais de Dance.

DAILY EXCEPT SUNDAY, MONDAY AND THURSDAY—

8:00 to 9:00 p. m.—KMTR Concert Orchestra.

TUESDAY AND THURSDAY—

9:00 to 10:00 p. m.—Miller's Lafayette Cafe Dance Orchestra.

TUESDAY, THURSDAY AND SATURDAY—

9:30 to 10:00 a. m.—Sylvia, the Blind Cook.

DAILY EXCEPT SATURDAY AND SUNDAY—

5:00 to 6:00 p. m.—Home Hour.

MONDAY, WEDNESDAY AND FRIDAY—

11:00 to 11:15 a. m.—Radio Classified Guide.

WEEK COMMENCING SUNDAY, OCTOBER 24, 1926

SUNDAY, OCTOBER 24—

6:30 to 7:00 p. m.—Leila Castberg's Half Hour.

7:00 to 8:00 p. m.—Miller's Lafayette Cafe Concert Orchestra.

8:00 to 10:00 p. m.—KMTR Concert Orchestra.

MONDAY, OCTOBER 25—

1:00 to 1:30 p. m.—Chester Baake of the Herman L. Baake Nurseries, "Gardening."

7:00 to 7:30 p. m.—Chas. Weeks' Lectures.

7:30 to 8:30 p. m.—Safeway Stores Program.

8:30 to 9:30 p. m.—KMTR Concert Orchestra.

9:30 to 10:00 p. m.—Y. M. C. A. Program.

TUESDAY, OCTOBER 26—

7:00 to 7:30 p. m.—E. P. Barclay, African Explorer and Diamond Expert.

7:30 to 8:00 p. m.—Gaylord Wilshire's Ionaco Lecture.

WEDNESDAY, OCTOBER 27—

7:00 to 7:30 p. m.—Special Musical Program.

7:50 to 8:00 p. m.—Marshutz Optical Company—Weekly Eyesight Talk.

9:00 to 10:00 p. m.—Los Angeles Railway Orchestra.

THURSDAY, OCTOBER 28—

7:00 to 8:00 p. m.—Mme. Alene's Talk.

8:00 to 9:00 p. m.—Rexal Drug Company Program.

FRIDAY, OCTOBER 29—

8:15 to 9:15 a. m.—Breakfast Club.

7:00 to 7:30 p. m.—Gaylord Wilshire's "Ionaco" Lecture.

7:30 to 8:00 p. m.—Prof. Alfred Cookman, President of Los Angeles Nature Study Club.

9:00 to 10:00 p. m.—Johnny Haas and his Drake Collegians.

SATURDAY, OCTOBER 30—

7:00 to 8:00 p. m.—Police and Fire Departments' Program.

9:00 to 10:00 p. m.—Special Musical Program.

THE TECHNICAL LABORATORY OF N. E. BROWN I. R. E., A. I. E. E., A. S. M. E.

(Technical Editor Radio Doings)

with its thousands of dollars worth of equipment and years of experience, is in a position to improve the selectivity, tonal quality and performance in general of your radio equipment, be that what it may. Special and authorized R. C. A. (Radiola) and Silver-Marshall service. No other laboratory on the coast is as thoroughly equipped with precision instruments. Special equipment for the testing and matching of superheterodyne interstatge transformers. The highest degree of accuracy guaranteed. Tests and reports on parts and equipment.

Telephone THornwall 0270 for appointments

6805 So. Western Avenue

Los Angeles

References: California Bank, Mercantile Agencies and Our Customers.

Authorized Radiola Dealer

*Courteous
Competent
Salesmen*



*Servicing
by
Experts*

What's the Score?

Why be in doubt as to the various plays of your favorite football team?

Install a Radiola in your home and hear the game play by play right from the field.

We carry a complete stock of the entire Radiola line at all times, in both sets and accessories.

DEMONSTRATION GLADLY MADE IN YOUR HOME

Eastman Kodak Stores, Inc.

510 South Broadway

Los Angeles ,Calif.



Dave Ward
Announcer

Hollywood, California—226 Meters

KFQZ

1641 North Argyle Ave., Hollywood, California
Gladstone 3197; Gladstone 3196
DAVE WARD, Program Director and Announcer
L. E. TAFT, Technical Engineer
"The Palace Hangar Studio"

DAILY EXCEPT SUNDAY—

12:00 to 1:00 p. m.—Los Angeles Merchants' and Manufacturers Hour, with the Office Boy, Hazel McCauley, and others.

6:00 to 7:00 p. m.—Chico De Verdi's California String Trio, with soloists.

WEEK COMMENCING SUNDAY, OCTOBER 24, 1926

SUNDAY, OCTOBER 24—

8:00 to 9:00 p. m.—Classical Hour with Martin D'Andrea, LaMont Stetzer, Bernice Banister and Helen Sheppard Peabody.

9:00 to 10:00 p. m.—C. Howard Paxton, Eugenia Whisenant and others.

10:00 to 11:00 p. m.—KFQZ Cut-Ups Orchestra, Hazel McCauley and the Office Boy.

11:00 to 12:00 midnight—Old Timers in Old Time Melodies.

MONDAY, OCTOBER 25—

8:00 to 9:00 p. m.—L. A. Railway Hawaiian Quartet, the Honeywell Twins and Phil Neeley.

9:00 to 10:00 p. m.—Myra Belle Vickers Program.

10:00 to 11:00 p. m.—KFQZ Cut-Ups Orchestra.

TUESDAY, OCTOBER 26—

8:00 to 9:00 p. m.—Howard "Blue" Stevenson, Royal Wallace and Mildred Masser.

9:00 to 11:00 p. m.—Jack Rabbits Dance Orchestra, Bob Swan, Hazel McCauley and the Office Boy.

WEDNESDAY, OCTOBER 27—

8:00 to 9:00 p. m.—Art Goodstein, Martha Davis and Willis Stone.

9:00 to 10:00 p. m.—Kitty and her Boys, Don Miner and Fred Till.

10:00 to 11:00 p. m.—KFQZ Cut-Ups Orchestra.

THURSDAY, OCTOBER 28—

8:00 to 9:00 p. m.—Silver String Quartet.

9:00 to 10:00 p. m.—Lawrence Lohr, Ekin Haig and Jack Wilson.

10:00 to 11:00 p. m.—Sunset Collegians Dance Orchestra.

FRIDAY, OCTOBER 29—

8:00 to 9:00 p. m.—Selwyn Harris Program.

9:00 to 10:00 p. m.—Eddie Miller's Dixie Boys.

10:00 to 11:00 p. m.—Len Nash's Town Band.

SATURDAY, OCTOBER 30—

8:00 to 9:00 p. m.—Lawrence Lohr, Ekin Haig and others.

9:00 to 11:00 p. m.—L. A. Railway Dance Orchestra, Billie Lee, Geraldine Clark, Adie Lucien, Hazel McCauley and the Office Boy.

Do you know who handles the different radio products? The Radio Buyers' Guide will tell you.

Say You Saw It in RADIO DOINGS.

STANDARD RADIO CO.

Tel. WE. 1560



417 W. Pico

ATWATER KENT DEALERS

See New 6-Tube Single Dial
\$75.00

EXPERT REPAIRING

LOS ANGELES

SUPPLIES



George Frenger
Announcer

Pasadena, California—315.6 Meters

KPSN

PASADENA STAR-NEWS
1000 WATTS—950 KILOCYCLES
GEORGE CECIL COWING, Managing Director
GEORGE FRENGER, Program Manager
FORBES W. VAN WHY, Engineer-in-Charge
PERCY C. PRYOR, Studio Office
Phone, Wakefield 3111

DAILY EXCEPT SUNDAY—

6:00 to 6:15 p. m.—Dinner-time news report.

WEEK COMMENCING SUNDAY, OCTOBER 24, 1926

SUNDAY, OCTOBER 24—

10:30 a. m.—Family Altar service by the United Church Brotherhood.

TUESDAY, OCTOBER 26—

8:00 to 9:00 p. m.—Star-News concert hour, organ recital, Ames H. Shearer at the console.

THURSDAY, OCTOBER 28—

8:00 to 9:00 p. m.—Star-News concert hour.

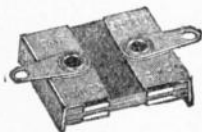
SATURDAY, OCTOBER 30—

8:00 to 9:00 p. m.—Concert hour with the Star-News Instrumental Ensemble.

The Radio Buyers' Guide contains list of all radio products handled on the Pacific Coast—Out November 1

AEROVOX

"Built Better"



"used
in the
LC-27"

FIXED CONDENSERS

are Specified in

LC-27

Diamond of the Air

To be announced soon(?)

Raytheon "B" Eliminator

Ultradyne

To be announced soon(?)

by L. M. Cockaday

" Herman Bernard

" John Rider

" Raytheon Mfg. Co.

" R. E. Lacault

" R. E. Lacault

AEROVOX fixed condensers have been approved
by M. I. T. and Yale Universities.

AEROVOX WIRELESS CORP.

489-491-493 Broom Street
New York



Tom Mitchell
Announcer

Santa Monica, California—238 Meters

KNRC

500 WATTS CAPACITY
Owned and Operated by KEIRULFF & RAVENS-
CROFT COMPANY.
Municipal Auditorium, Ocean Park, Santa Monica,
Calif. Phone Santa Monica 63-101.
TOM MITCHELL, Studio Manager and Announcer.
C. B. JUNEAU, Transmission Engineer.
"The Station with a Smile"

DAILY EXCEPT SUNDAY AND MONDAY—

1:00 p.m.—Musical program.
2:00 p.m.—"Talk on Dogs."
2:30 p.m.—Band Concert.
4:15 p.m.—Family Circle.
7:00 p.m.—Classical Hour.
8:00 p.m.—Band Concert.

WEEK COMMENCING SUNDAY, OCTOBER 24, 1926

SUNDAY, OCTOBER 24—

2:30 to 4:30 p.m.—Municipal Auditorium Band Concert.
8:00 to 9:00 p.m.—Municipal Auditorium Band Concert in Municipal Auditorium of Ocean Park.

MONDAY, OCTOBER 25—

1:00 to 2:00 p.m.—Blue Monday Musical by Cliff Eddy and Tom Mitchell.
2:30 to 3:30 p.m.—Band Concert by Ocean Park Municipal Auditorium Band, under the direction of A. Tommasino.
4:15 p.m.—Family Circle with Brother Tom.
7:00 p.m.—Miss Helen Meier, concert pianist.
7:45 p.m.—Talk on Dogs by Tom Mitchell.
8:00 to 9:00 p.m.—Band Concert by Municipal Auditorium Band, direction of A. Tommasino.
9:00 to 11:00 p.m.—Black and Tan Orchestra, The Pirate Band and others.

TUESDAY, OCTOBER 26—

7:45 p.m.—Talk of Dogs by Tom Mitchell.
9:00 to 11:00 p.m.—Tike Whinnery and his Music Masters, Miss Ethel Glassman Clark, Virginia McCoy, Piggly Wiggly Girls, and others.

WEDNESDAY, OCTOBER 27—

7:55 p.m.—Talk on Dogs.
9:00 to 11:00 p.m.—The Gables Club Orchestra, under the direction of Lee Young, Jr.; Geraldine Gordon, contralto; Calawaii Trio, Hawaiian entertainers.

THURSDAY, OCTOBER 28—

9:00 to 11:00 p.m.—Adkins Saxophone Band, Helen Gest in novelty numbers, Len Nash and his Country Boys featured.

FRIDAY, OCTOBER 29—

9:05 p.m.—Jack Boaz, hunting and fishing scout for the New York Hardware Trading Co., will tell you where to go fishing and hunting.
9:15 to 11:00 p.m.—L. A. R. R. Orchestra, through the courtesy of the L. A. R. R. Co., Lucille Baumeister, contralto, and others.

SATURDAY, OCTOBER 30—

9:00 to 12:00 p.m.—Week meeting of the K. R. B.'s Frolic.

Dealers: Send us your name and we will forward you a copy of the Radio Buyers' Guide free—Out November 1st.

PALMER RADIO LABORATORY

Established 1923

Specializing in

SUPER-HETERODYNES AND INFRADYNES
Intermediate Transformers Made and Calibrated

Also all other types of receivers made to operate efficiently

Satisfaction Guaranteed or No Charge

Advice Free

Open Evenings Till 9 P. M.

Courtesy to All

4529 S. Vermont, Los Angeles. Phone VERmont 7883



J. A. Cleary
Announcer

Venice, California—205 Meters

KFVD

250 WATTS

McWHINNIE ELECTRIC CO., 1825 So. Pacific Ave.
Phone 375

DAILY EXCEPT SUNDAY—

9:00 to 10:00 a.m.—News and musical program.

5:00 to 7:00 p.m.—Shopping Guide and musical program.

10:00 p.m. to 12:00 midnight—Venice Ballroom Orchestra.

WEEK COMMENCING SUNDAY, OCTOBER 24, 1926

SUNDAY, OCTOBER 24—

10:00 p.m. to 12:00 midnight—Venice Ballroom Orchestra.

MONDAY, OCTOBER 25—

8:00 to 10:00 p.m.—Studio broadcasting, featuring Corrine Redd, soprano; Clifford Vallie, tenor; Geraldine Gordon, female baritone; Melba Lyon, studio accompanist.

TUESDAY, OCTOBER 26—

8:00 to 10:00 p.m.—Studio broadcasting, featuring Martin Wallace Orchestra and entertainment.

WEDNESDAY, OCTOBER 27—

4:00 to 5:00 p.m.—Special children's hour program.

7:30 to 8:00 p.m.—Special program sponsored by the Edgewater Pharmacy.

8:00 to 9:00 p.m.—Studio program, featuring Elite Dance Orchestra.

9:00 to 9:30 p.m.—Program sponsored by the Ellis Fisher Motor Car Co.

9:30 to 10:00 p.m.—Studio program.

THURSDAY, OCTOBER 28—

4:00 to 5:00 p.m.—Special program by Mr. Louis Lusich, Slavonian tenor.

8:00 to 10:00 p.m.—Studio broadcasting.

FRIDAY, OCTOBER 29—

4:00 to 5:00 p.m.—Special children's hour program.

8:00 to 10:00 p.m.—Studio broadcasting, featuring Mr. Barkey and mandolin quartet.

SATURDAY, OCTOBER 30—

8:00 to 10:00 p.m.—Studio broadcasting.

12:00 p.m. to 7 a.m.—Frolic at the Ship Cafe.

DEALERS

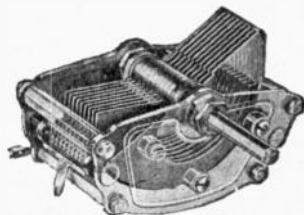
WHERE TO BUY

METRALIGN

SLT STRAIGHT LINE
TUNING

G. I. CONDENSERS

Makes
any set
a new set
—in 15
minutes



RADIO MANUFACTURERS SUPPLY CO.
1000 South Broadway
LOS ANGELES

Cor. S. BROADWAY and TENTH ST.



"Hal." G. Nichols
Announcer

Long Beach, California—233 Meters

KFON

1280 Kilocycles—500 Watts
NICHOLS & WARRINGER, INC.
Studio: 211 Jergins Trust Bldg. Phones: 617-19, 614-60.
Business Office: 212 Jergins Trust Bldg.
Phones: 617-19, 614-60
HAL G. NICHOLS, Manager and Studio Director
"Where Your Ship Comes In"

DAILY EXCEPT SUNDAY—

11:30 a.m. to 12:30 p.m.—Prizma Hour.
4:00 to 4:30 p.m.—Press-Telegram Late News.
5:00 to 6:00 p.m.—KFON Concert Orchestra.
6:00 to 6:20 p.m.—Organ Recital from State Theater.
6:20 to 7:00 p.m.—KFON Concert Orchestra.
DAILY EXCEPT SUNDAY AND MONDAY—
2:30 to 4:00 p.m.—Municipal Band Concert.

WEEK COMMENCING SUNDAY, OCTOBER 24, 1926

SUNDAY, OCTOBER 24—

11:00 a.m. to 12:20 p.m.—Service from Church of the Nazarene, Rev. L. A. Reed.
5:00 to 6:00 p.m.—KFON Concert Orchestra, sponsored by Long Beach business men.
6:00 to 6:20 p.m.—Birkel Music Company piano recital, featuring Weber Duo-Art.
6:20 to 6:50 p.m.—KFON Concert Orchestra.
7:00 to 7:45 p.m.—Studio program.
7:45 to 9:00 p.m.—Service from First Church of Christ, Scientist, by remote control.
9:00 to 10:00 p.m.—KFON Radio Favorites and Concert Orchestra.
10:00 to 11:00 p.m.—Studio Orchestra and assisting artists.

MONDAY, OCTOBER 25—

7:00 to 8:00 p.m.—Thrifty Sandy program, sponsored by Citizens State Bank.
8:00 to 8:15 p.m.—Lure of the Sky, Dr. Lewis Thomas.
8:15 to 9:00 p.m.—Studio program.
9:00 to 11:00 p.m.—"Airdales' Club," presented by Long Beach Advertising Club.

TUESDAY, OCTOBER 26—

7:00 to 7:30 p.m.—J. W. Marshall & Sons program.
7:30 to 8:00 p.m.—Chat for Booklovers.
8:00 to 9:00 p.m.—Press-Telegram presenting Long Beach Municipal Band.
9:00 to 10:30 p.m.—Aero Club of Long Beach, featuring California Casa Real Orchestra.
10:30 to 12:00 p.m.—State Theatre, presenting Pantages Vaudeville.

WEDNESDAY, OCTOBER 27—

7:00 to 8:00 p.m.—Musical program from main studio.
8:00 to 9:00 p.m.—Press-Telegram presenting Long Beach Municipal Band.
9:00 to 10:00 p.m.—Truck Tire Service program.
10:00 to 11:00 p.m.—Gaskell Mfg. Co. and Missman Radio Co. program.

THURSDAY, OCTOBER 28—

7:00 to 8:00 p.m.—Studio program.
8:00 to 9:00 p.m.—Press-Telegram musical program, by Frank P. Goss.
9:00 to 10:00 p.m.—Spaulding's Big Bear Lake Land Company's program.
10:00 to 11:00 p.m.—Shell Oil Company Orchestra.

FRIDAY, OCTOBER 29—

7:00 to 8:00 p.m.—Psychology lecture, Dick Carlson, California College of Commerce.
8:00 to 9:00 p.m.—Press-Telegram presenting Long Beach Municipal Band.
9:15 to 10:00 p.m.—Mountain View Acres program.
10:00 p.m. to 1:00 a.m.—Elks Frolic, presented by Long Beach Lodge of Elks, No. 888.

SATURDAY, OCTOBER 30—

7:00 to 7:30 p.m.—Texas Cowboys' Duet in old-time dance music.
7:30 to 8:00 p.m.—Studio program.
8:00 to 9:00 p.m.—Press-Telegram presenting Long Beach Municipal Band.
9:00 to 10:00 p.m.—Favorite Radio Stars and Studio Orchestra.
10:00 to 11:00 p.m.—Studio program.

BAKELITE, FIBRE & WROUGHT PARTS

**CELORON
FORMICA**

{ Sheets
Tubes
Rods

{ Sheets
Tubes
Rods

{ Panels
Sub-panels
Coil Forms

{ Loops
Loop Strips
Specials

Rubber Panel Stock

If it can be made of bakelite or fibre we can make it

TWINING-SCOTT

Distributors, Diamond State Fibre Co.

WEstmore 4277

1125 Wall St.

LOS ANGELES



Major Lawrence Mott
Announcer

Avalon, California—211.1 Meters

KFWO

THE ISLAND STATION
Power 250 Watts—Western Electric Equipment
"Katalina for Wonderful Outings"
MAJOR LAWRENCE MOTT, Owner-Operator
MISS FRANCES HEWITT, Studio and Program Director
"The Isle With a Smile"

WINTER SCHEDULES AT KFWO
The Mott Station at Catalina Island, California
(In effect week of Sept. 20th)

DAILY EXCEPT MONDAY—

12:30 to 1:30—Hotel St. Catherine Orchestra.

6:30 to 8:00—Hotel St. Catherine Orchestra.

DAILY EXCEPT MONDAY, THURSDAY AND SUNDAY—

6:00 to 6:30—Studio.

MONDAYS: Silent.

TUESDAYS: 5:00 to 6:00—Miss Hewitt's Golden Hour.
6:00 to 6:30—Studio.

WEDNESDAYS: 8:00 to 9:00—Studio Program.
9:00 to 12:00 Midnight—Overseas.

THURSDAYS: 6:00 to 6:30—Wrigley Chimes.
8:00 to 9:00—Studio Program.

FRIDAYS: 5:00 to 6:00—Miss Hewitt's Golden Hour.

SATURDAYS: 3:00 to 4:30—Rebroadcast of KNX.

SUNDAYS: 5:00 to 6:00—Miss Hewitt's Golden Hour.

6:00 to 6:30—Wrigley Chimes.

8:00 to 9:15—Lobby Concert.

9:15 to 10:00—Studio.



Tom Sexton
Announcer

San Diego, California—245.8 Meters

KFSD

1000 WATTS—1220 KILOCYCLES
AIRFAN RADIO CORPORATION
U. S. Grant Hotel, 326 Broadway, San Diego. Main 8661
RAYMUND V. MORRIS, President
TOM SEXTON, Announcer
"Kiss From San Diego"

DAILY—

6:30 to 7:00 p. m.—Musical Amusement Review

DAILY EXCEPT SATURDAY—

6:15 to 6:30 p. m.—E. Frank Gunn, "Ye Towne Topics."

DAILY EXCEPT SUNDAY—

10:00 to 11:00 p. m.—Harvey Ball and his U. S. Grant Hotel Orchestra

WEEK COMMENCING SUNDAY, OCTOBER 24, 1926

SUNDAY, OCTOBER 24—

3:00 to 4:00 p. m.—Temple service of the Theosophical University at Point Loma, California, broadcast by remote control.

7:00 to 8:00 p. m.—Mixed musical program.

8:00 to 9:00 p. m.—Program of sacred music and ballad numbers.

9:00 to 10:00 p. m.—All Star Five; Gene Merritt, baritone.

MONDAY, OCTOBER 25—

7:00 to 8:00 p. m.—Studio program.

8:00 to 9:00 p. m.—First Unitarian Church, Howard B. Bard, pastor.

9:00 to 10:00 p. m.—Mixed program.

TUESDAY, OCTOBER 26—

7:00 to 8:00 p. m.—Sally Canady Huff and her "Sunset Ensemble."

8:00 to 9:00 p. m.—Union Title and Trust Company program.

9:00 to 10:00 p. m.—R. V. Morris, Inc., Hudson-Essex program.

WEDNESDAY, OCTOBER 27—

7:00 to 7:30 p. m.—Orthophonic Concert.

7:30 to 8:30 p. m.—Concert program broadcast by remote control from the Theosophical University at Point Loma, California.

8:30 to 10:00 p. m.—KFSD request program.

THURSDAY, OCTOBER 28—

7:00 to 8:00 p. m.—Harry Abell and his Orange Lantern Orchestra.

8:00 to 9:00 p. m.—John P. Mills, Inc., Riviera Villas program.

9:00 to 10:00 p. m.—Mixed musical program.

FRIDAY, OCTOBER 29—

7:00 to 8:00 p. m.—San Diego Police Department program.

8:00 to 9:00 p. m.—Pure Milk Dairy Company program.

9:00 to 10:00 p. m.—Sally Canady Huff and her "Sunset Ensemble."

SATURDAY, OCTOBER 30—

7:00 to 8:00 p. m.—Mixed program.

8:00 to 9:00 p. m.—Mme. de Bauviere, "Franco-American" hour.

9:00 to 10:00 p. m.—Studio program.

11:00 p. m. to 1:00 a. m.—KFSD Midnight Frolic.



Claude Morrison
Announcer

San Francisco, California—428.3 Meters

KPO

1000 WATTS—700 KILOCYCLES
HALE BROTHERS AND THE CHRONICLE
CLAIRE MORRISON, Technical Director
Phone, Kearney 5777
"The Voice of San Francisco"

DAILY EXCEPT SUNDAY—

- 6:45, 7:15, 7:45 a. m.—Health drill by Hugh Barrett Dobbs,
- 10:30 a. m.—Weather forecast and general information.
- 12:00 noon—Time Signals.
- 12:30 to 1:00 p. m.—Clift Hotel Concert Orchestra, Sollie Heilbronner, director.
- 1:00 to 2:00 p. m.—Rudy Seiger's Fairmount Hotel Orchestra.
- 2:30 to 3:30 p. m.—Baseball, play by play, from Recreation Park.
- 4:30 to 5:30 p. m.—Palace Hotel Concert Orchestra.
- 5:30 to 6:15 p. m.—Children's Hour with Big Brother.
- 6:15 to 6:30 p. m.—Stock quotations.
- 6:30 to 7:00 p. m.—State Restaurant Orchestra.
- 7:00 to 7:30 p. m.—Rudy Seiger's Orchestra.
- 7:30 to 8:00 p. m.—DX.

WEEK COMMENCING SUNDAY, OCTOBER 24, 1926

SUNDAY, OCTOBER 24—

- 9:45 to 10:45 a. m.—Undenominational and non-sectarian church service.
- 10:45 a. m.—United States weather forecast, amusement and general information.
- 6:00 to 6:30 p. m.—States Restaurant Orchestra, Waldemar Lind director.
- 6:30 p. m.—Baseball scores and general information.
- 6:35 to 8:35 p. m.—Palace Hotel Concert Orchestra.
- 8:35 to 10:00 p. m.—Rudy Seiger's Fairmont Hotel Concert Orchestra.

MONDAY, OCTOBER 25—

- 8:00 to 9:00 p. m.—"Uda Waldrop Hour," featuring Uda Waldrop, KPO's official organist, at the organ of the First Unitarian Church.
- 9:00 to 10:00 p. m.—Simultaneous broadcast by KFI and KPO of a program being presented at KFI by Stanley W. Smith, Inc., San Francisco, and the Walter M. Murphy Company, Los Angeles.
- 10:00 to 11:00 p. m.—Mandarin Cafe Orchestra, Lynn Pryor director.

TUESDAY, OCTOBER 26—

- 8:00 to 9:00 p. m.—Mandarin Cafe Orchestra, Lynn Pryor director.
- 9:00 to 0:00 p. m.—Program featuring the KPO Trio and Gypsy and Marta, harmony team.
- 10:00 to 11:00 p. m.—Palace Hotel Rose Room Dance Orchestra, Gene James director.

WEDNESDAY, OCTOBER 27—

- 8:00 to 9:00 p. m.—Program by the Atwater Kent artists, under the auspices of Ernest Ingold, Inc.
- 9:00 to 10:00 p. m.—Clift Hotel Dance Orchestra, Herb Meyerinck director.
- 10:00 to 11:00 p. m.—States Restaurant Orchestra, Waldemar Lind director.
- 11:00 p. m. to 12:00 midnight—Cabiria Cafe Orchestra, Billy Long leader.

THURSDAY, OCTOBER 28—

- 8:00 to 9:00 p. m.—Program by the University of California.
- 9:00 to 10:00 p. m.—Program by Ames Lono's Hawaiians.
- 10:00 to 11:00 p. m.—Mandarin Cafe Orchestra, Lynn Pryor director.

FRIDAY, OCTOBER 29—

- 8:00 to 9:30 p. m.—Intakes and Exhausts by Gasoline George of Hertz Driv-ur-Self Stations.
- 8:30 to 9:00 p. m.—Cabiria Cafe Orchestra, Billy Long leader.
- 9:00 to 10:00 p. m.—Palace Hotel Rose Room Dance Orchestra, Gene James director.
- 9:10 to 9:20 p. m.—Book reviews by Harry A. Small of The Chronicle.
- 10:00 to 11:00 p. m.—States Restaurant Orchestra, Waldemar Lind director.
- 11:00 p. m. to 12:00 midnight—Clift Hotel Dance Orchestra, Herb Meyerinck director.

SATURDAY, OCTOBER 30—

- 8:00 to 9:00 p. m.—Last Saturday of the month: Simultaneous broadcast by KPO and KFI of a talk at the KPO studios by Herbert Hoover.
- 9:00 to 10:00 p. m.—Simultaneous broadcast by KFI and KPO of a program being presented for the Associated Packard dealers of California.
- 10:00 p. m. to 12:00 midnight—Clift Hotel Dance Orchestra, Herb Meyerinck director.

Fifty-two weeks only \$2.00—Subscribe Now.

Alternating Current Transformers

Filament
Trans.

\$5.00

I Specialize on Operating Sets

Without Batteries

RAY CAMPBELL

Plate
Trans.

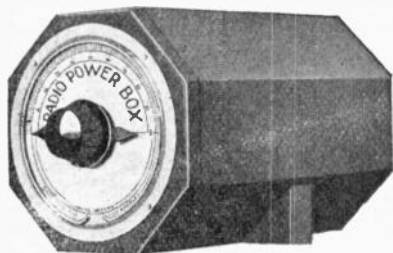
\$5.00

1217 Dwiggins Street, near N. Huntington Drive, Two Blocks from Sierra Vista Station,
LOS ANGELES, CALIF. Phone GARfield 7891. Wholesale Dealers: COOK-NICHOLS.

ANNOUNCING
50% REDUCTION
 In the Price of
Radio Power Box
 and
CHANGE OF SELLING POLICY

HEREAFTER

We will sell Direct to Set Owners, thereby SAVING them the
 "Middle Man's PROFIT"



Model No. 24

This Model
 Built for
 Radiola
 And Other
 Super-
 Heterodynes

Regular Price
\$12

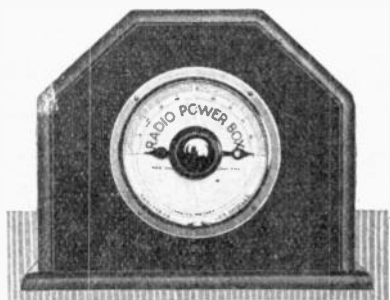
Now \$6

De Luxe Model No. 25

Regular Price
\$15

This Model
 Built for
 Radiola 25

Now \$7



SAVES BATTERIES, GETS DISTANCE

Shipped Direct to Set Owners on Receipt of Price

Send All Remittances to

THE SANTEE CO.

216 Calo Building

443 South San Pedro Street

LOS ANGELES, CAL.



Howard I. Milholland
Announcer

Oakland, California—361.2 Meters

KGO

3000 WATTS—830 KILOCYCLES
PACIFIC COAST STATION, GENERAL ELECTRIC CO.
Phone, Fruitvale 5960

DAILY EXCEPT SUNDAY—

11:30 a. m. to 1:00 p. m.—Luncheon concert; also time signal and weather reports.

1:30 and 7:00 p. m.—Stock and weather reports. Baseball scores
2:00 to 4:00 p. m.—Knickerbocker Trio.

6:00 to 6:55 p. m.—Bem's Little Symphony Orchestra.

WEEK COMMENCING SUNDAY, OCTOBER 24, 1926

SUNDAY, OCTOBER 24—

11:00 a. m.—Calvary Presbyterian Church service, Rev. Ezra Allen Van Nuys, pastor.

4:00 p. m.—Vesper service, Grace Cathedral, San Francisco.

6:30 to 7:30 p. m.—Stanislas Bem's Little Symphony.

7:35 p. m.—Calvary Presbyterian Church service, San Francisco.

9:00 to 10:00 p. m.—Stanislas Bem's Little Symphony.

MONDAY, OCTOBER 25—

4:00 to 5:00 p. m.—California Federation of Women's Clubs.

5:30 to 6:00 p. m.—KGO Kiddies' Klub.

8:00 to 9:00 p. m.—The Royal Hour, featuring The Gondoliers,

9:00 p. m.—"Chats About New Books."

8:20 p. m.—Auction Bridge lessons.

TUESDAY, OCTOBER 26—

8:00 to 9:00 p. m.—(Oakland studio)—The Pilgrims. Eveready program

9:00 p. m.—Surprise broadcast.

WEDNESDAY, OCTOBER 27—

5:30 p. m.—"For Instance," by General Jackson.

8:00 p. m.—Farm program, co-operating with U. S. Dept. of Agriculture,

8:30 p. m.—Bem's Little Symphony.

9:00 p. m.—Address by Edwin C. Voorhees, University of California.

THURSDAY, OCTOBER 28—

5:00 to 6:00 p. m.—George W. Ludlow, "Friend to Boys."

8:00 p. m.—Oakland studio program. "The White Elephant," comedy by Watkins Eppes Wright, presented by the KGO Players, Wilda Wilson Church directing.

10:30 p. m. to 12:00 midnight—Phil Lampkin's Musical Bears.

FRIDAY, OCTOBER 29—

11:10 a. m.—Prudence Penny, Home-making Talk.

SATURDAY, OCTOBER 30—

4:00 to 5:00 p. m.—Stanislas Bem's Little Symphony.

8:45 p. m.—"Weekly Sport Review," by Al Sanotro.

9:00 p. m. to 1:00 a. m.—Dance music, Wilt Gunzendorfer's Hotel Whitcomb Band.



Chas. H. Gabrielle, Jr.
Announcer

Oakland, California—508.2 Meters

KLX

500 WATTS—507 METERS
OAKLAND TRIBUNE RADIOPHONE
Phone, Lakeside 6015

"Oakland, Where Rail and Water Meet"

DAILY EXCEPT SUNDAY—

3:00 p. m.—Baseball.

7:00 to 7:30 p. m.—News broadcast.

WEEK COMMENCING MONDAY, OCTOBER 25, 1926

MONDAY, OCTOBER 25—

8:00 to 9:00 p. m.—Studio program.

9:00 to 10:00 p. m.—Weekly meeting of the Lake Merritt Ducks.

WEDNESDAY, OCTOBER 27—

6:30 to 7:00 p. m.—Athens Athletic Club Orchestra.

8:00 to 9:00 p. m.—Educational program.

9:00 to 10:00 p. m.—Navy Day program.

FRIDAY, OCTOBER 29—

8:00 to 9:45 p. m.—Western Auto Supply Company program.

9:45 to 10:30 p. m.—Athens Athletic Club Orchestra.

SATURDAY, OCTOBER 30—

2:30 p. m.—Football, University of Oregon vs. University of California.

Mohawk Radio

One Dial

"SENECA"—The Mohawk Unit drawer for use in phonographs or individual cabinets. \$62.50.

The **"CHEROKEE"**—Mohawk six-tube, one dial, shielded table receiver, at \$70.00.



Chippewa

"WINONA"—Mohawk one dial, six-tube, shielded radio with "B" battery compartments. Walnut hand rubbed piano finish, at \$85.00.

"CHIPPEWA" — Mohawk one dial, six-tube, shielded radio console, with built-in speaker and self-contained battery compartments—two-tone, at \$120.00.

"PONTIAC" — Mohawk one dial, six-tube, shielded radio console, built-in loud speaker, self-contained battery compartment, Walnut hand rubbed piano finish, burl Walnut front, drop-lid with invisible hinges, at \$150.00.

"GENEVA"—Mohawk one dial, six-tube, shielded radio console. Built-in loud speaker in dome of console, battery compartment, dome full piano hinged, front burl Walnut, inlaid, rich Walnut hand rubbed piano finish, at \$195.00.

"POCAHONTAS"—Mohawk one dial, six-tube, shielded Super De Luxe Radio Console. Built-in loud speaker, battery compartment, exterior in Colonial design, burl Walnut, rich two-tone Walnut hand rubbed piano finish, at \$310.00.

COOK-NICHOLS CO.

411 South San Pedro Street
482 So. Fair Oaks Ave.
PASADENA, CALIF.

Los Angeles, California
2435 East Anaheim St.
LONG BEACH, CALIF.



R. M. Bitzer
Announcer

Oakland, California—303 Meters

KTAB

THE ASSOCIATED BROADCASTERS
ADA MORGAN O'BRIEN, Director

DAILY EXCEPT SUNDAY—

8:45 to 9:15 a. m.—Prayer Service.
9:15 to 9:45 a. m.—Shopping and women's hour.
5:00 to 6:00 p. m.—Children's hour.
7:00 to 7:30 p. m.—Shopping hour.

WEEK COMMENCING SUNDAY, OCTOBER 24, 1926

SUNDAY, OCTOBER 24—

11:00 a. m. and 7:45 p. m.—Church service of Tenth Avenue Baptist Church.

MONDAY, OCTOBER 25—

8:00 to 10:00 p. m.—Evening of Italian music.

TUESDAY, OCTOBER 26—

8:00 to 8:30 p. m.—Through the courtesy of Uncle Al's Radio Shop.

WEDNESDAY, OCTOBER 27—

9:15 to 9:45 a. m.—Shopping Hour. Talk on Banking by Miss Jean Hobbs.
8:00 to 10:00 p. m.—Studio program and Boulevard Players. (8:00 to 9:00 p. m., through the courtesy of the Farmers and Merchants Savings Bank.)

THURSDAY, OCTOBER 28—

9:45 to 10:00 a. m.—Dr. J. D. Thompson on "Diet and Health."
Silent Night.

FRIDAY, OCTOBER 24—

9:15 to 9:45 a. m.—Shopping Hour.
7:00 to 7:30 p. m.—Shopping Hour.
8:00 to 8:15 p. m.—Course in Football by Nibs Price, U. C. football coach.
8:15 to 9:15 p. m.—Studio program.

SATURDAY, OCTOBER 30—

9:15 to 9:45 a. m.—Shopping Hour. Radio Recipes, OB.
Silent Night.

HOOK YOUR RADIO TO ELECTRIC LIGHT CURRENT

Forget Your "A" Battery Troubles

Thousands throughout the
world are using

BLAX POLARIZER

Equip Your Set Now

Only \$1.00

Ask Your Dealer



Be sure it's a
BLAX

Other Interesting Items:

Three Tube Diagram

Send 25c for Three-Tube Working
Blue Print.

Heavy Duty Transformers

Especially Wound for Three-Tube
Set, \$2.00.

"B" Battery Eliminators

We will close out our stock at a discount

But Most of All—Use **BLAX POLARIZER**

BLACK BROS., 918 Black Bldg., Los Angeles



KOMO—Seattle, Washington—305.9 Meters

1000 WATTS

HOME SAVINGS BLDG., SEATTLE, WASH.

DAILY EXCEPT SUNDAY—

9:30 to 9:40 a. m.—Inspirational Service.

9:40 to 10 a. m.—Road Bulletin.

10:20 a. m.—Weather Forecast.

7:45 to 8:00 p. m.—"Ye Towne Topics."

WEEK COMMENCING SUNDAY, OCTOBER 24, 1926**SUNDAY, OCTOBER 24—**

10:00 to 11:00 a. m.—International Bible Students Association, morning service.

11:00 to 12:10 p. m.—Plymouth Congregational Church.

12:10 to 1:10 p. m.—St. James Cathedral Parish.

6:00 to 7:00 p. m.—Power Plant Engineering Company, presenting Herbert Preeg's Concert Orchestra.

7:50 to 9:10 p. m.—First Church of Christ, Scientist.

9:10 to 10:10 p. m.—International Bible Students Association, Bible lecture.

MONDAY, OCTOBER 25—

10:00 to 10:20 p. m.—Vogue La Rose Beauty Parlor.

6:15 to 7:45 p. m.—Schwabacher Bros. & Co., Inc., Dinner hour concert.

8:00 to 8:15 p. m.—U. S. Farm School.

TUESDAY, OCTOBER 26—

12:00 to 12:20 (Noon)—U. S. Department of Agriculture.

12:20 p. m.—Seattle City Wide Democratic Women's Club.

6:15 to 7:45 p. m.—Schwabacher Bros. & Co., Inc., Dinner hour concert.

8:00 to 9:00 p. m.—International Bible Students Association, Bible lecture.

9:00 to 9:30 p. m.—Remick's Song Shop.

WEDNESDAY, OCTOBER 27—

10:00 to 10:20 a. m.—Vogue La Rose Beauty Parlor. Talk.

12:00 to 12:30 (Noon)—U. S. Department of Agriculture. "Noon Hour Flashes."

12:30 to 1:30 p. m.—Western Radio Sales Company presenting organ recital.

6:00 to 7:00 p. m.—Power Plant Engineering Company, presenting Herbert Preeg's Concert Orchestra.

8:00 to 9:00 p. m.—Northern Bond & Mortgage Concert Orchestra.

9:00 to 9:15 p. m.—National Farm Radio School.

10:00 p. m.—"Navy Day Program."

THURSDAY, OCTOBER 28—

12:00 to 12:15 (Noon)—U. S. Farm Department of Agriculture. "Noon Hour Flashes."

12:30 p. m.—Young Men's Business Club. Weekly luncheon.

8:00 to 8:30 p. m.—Albers Milling Company. "Poultry Talks."

8:30 to 8:45 p. m.—"Ye Towne Topics." "Daily Health Messages."

FRIDAY, OCTOBER 29—

10:00 to 10:30 a. m.—Vogue La Rose Beauty Parlor. Talk.

6:15 to 7:45 p. m.—Schwabacher Bros & Co., Inc., Dinner hour concert.

SATURDAY, OCTOBER 30—

12:30 (Noon)—King County Democratic Club. Remote control.

6:15 to 7:45 p. m.—Schwabacher Bros & Co., Inc., Dinner hour concert.

The Radio Buyers' Guide will contain list of the Radio Manufacturers, Manufacturers' Agents and Jobbers, with the respective lines handled. Out November 1

HORNS

FOR
PORTABLES
CABINETS
CONSOLES

Wonderful Tone; no square corners to cause that hollow sound like "tootin'" down a barrel.

**COMPARISON INVITED
H O R N S**

Number—Size

Tone Travel

100—6" Diam., 6" Deep..... 13"

200—5"x8", 8" Deep..... 18"

200—8" Diam., 8" Deep..... 18"

300—10" Diam., 9½" Deep..... 23"

400—8"x12", 11½" Deep..... 35"

400—11½" Diam., 11½" Deep.. 35"

UNITS

We Represent

Holliday Radio
Co., Inc.

Manufacturers of the best Commercial Unit on the market. Will take the power tube without distortion. Fully Guaranteed.

We Will Out-Demonstrate Any Horn Made, Regardless of Its Cost or What Material Is Used in Its Manufacture.

M. J. CARLS, 1929 S. Los Angeles St. WE. 2712. Los Angeles



Paul R. Weismeyer
Announcer

Portland, Oregon—491.5 Meters

KGW

1000 WATTS—610 KILOCYCLES
THE MORNING OREGONIAN
"Keep Growing Wiser"

DAILY EXCEPT SUNDAY—

9:45 to 10:00 a.m.—Women's health exercises.
10:00 to 11:30 a.m.—Town Crier, music, weather reports, news items.
6:00 to 7:00 p.m.—Dinner concert.
7:30 to 7:45 p.m.—Weather and market reports and baseball scores.

WEEK COMMENCING SUNDAY, OCTOBER 24, 1926

SUNDAY, OCTOBER 24—

10:25 a.m. to 12 noon—Morning services from the St. Stephens Pro-Cathedral.
7:30 to 9:00 p.m.—Evening services from the Hinson Memorial Baptist Church.
9:00 to 10:00 p.m.—Concert by the Chevrolet Little Symphony Orchestra.

MONDAY, OCTOBER 25—

7:45 to 8:00 p.m.—Lecture, "Proper Care of the Hair and Scalp," by N. J. Fuller.
8:00 to 9:00 p.m.—Vaudeville entertainment.
9:00 to 10:00 p.m.—Concert.
10:00 p.m. to 12:00 midnight—Dance music by Cole McElroy's Orchestra.

TUESDAY, OCTOBER 26—

7:00 to 7:30 p.m.—Children's program, broadcast simultaneously with KFOA, Seattle.
8:00 to 10:00 p.m.—Educational program.
10:00 p.m. to 12:00 midnight—Dance music, featuring Herman Kenin and his orchestra.

WEDNESDAY, OCTOBER 27—

8:00 to 9:00 p.m.—Concert by the 7th United States Infantry Band.
9:00 to 10:00 p.m.—Musical entertainment.

THURSDAY, OCTOBER 28—

7:45 to 8:00 p.m.—Lecture, given under the auspices of the Catholic Truth Society
8:00 to 10:00 p.m.—Vaudeville entertainment.

FRIDAY, OCTOBER 29—

8:00 to 8:30 p.m.—Weekly meeting of the KGW Movie Club.
8:30 to 10:30 p.m.—Dance music by Cole McElroy's Orchestra.
10:30 p.m. to 12:00 midnight—Weekly frolic of the Keep Growing Wiser Order of Hoot Owls.

SATURDAY, OCTOBER 30—

10:00 p.m. to 12:00 midnight—Dance music by wire telephony from the Indian Grill of the Multnomah Hotel, featuring Herman Kenin and his orchestra.



W. C. ("Doc") Gordon
Announcer

Seattle, Washington—384.4 Meters

KJR

NORTHWEST RADIO SERVICE CO.
1000 WATTS—780 KILOCYCLES
THE BROADCASTING HOME OF THE POST-
INTELLIGENCER
"Radio Headquarters"

DAILY EXCEPT SUNDAY—

11:30 a.m. to 12:00 noon—Post-Intelligencer Talk.
12:00 noon, 6:00 p.m. and 10:00 p.m.—Pacific Standard Time Signals
5:40 p.m.—Closing stock quotations.
6:00 p.m.—Baseball scores.
6:05 p.m.—Weather report and "The Box Office."

WEEK COMMENCING SUNDAY, OCTOBER 24, 1926

SUNDAY, OCTOBER 24—

11:00 a.m. to 12:30 p.m.—Church Service from First M. E. Church, Dr. J. Ralph Magee.
7:45 to 8:00 p.m.—Organ recital.
8:00 to 9:15 p.m.—Evening Service, First M. E. Church, Dr. J. Ralph Magee, pastor.
9:15 to 10:45 p.m.—Puget Sound Savings & Loan Assn. Orchestra.

MONDAY, OCTOBER 25—

6:30 to 7:30 p.m.—Bert Blangy's Central Ford Agency Dinner Hour Concert.
8:30 to 10:00 p.m.—Post-Intelligencer Studio Program.

TUESDAY, OCTOBER 26—

6:30 to 7:30 p.m.—Amaizo Oil Co. Dinner Hour Concert.
8:30 to 10:00 p.m.—Puget Sound Savings & Loan Assn. Studio Program.

WEDNESDAY, OCTOBER 27—

9:00 to 11:00 p.m.—Dance music by remote control from Butler Hotel.

THURSDAY, OCTOBER 28—

8:30 to 10:00 p.m.—Puget Sound Savings & Loan Assn. Studio Program.
10:00 to 10:30 p.m.—Benjamin Franklin Electric Co. Musical Program.

FRIDAY, OCTOBER 29—

8:30 to 10:00 p.m.—Post-Intelligencer Studio Program.

SATURDAY, OCTOBER 30—

9:00 to 11:00 p.m.—Dance music by remote control from Butler Hotel.



Freeman H. Talbot
Announcer

Denver, Colorado—322.4 Meters

KOA

930 KILOCYCLES—2000 WATTS
GENERAL ELECTRIC COMPANY
Pacific Standard Time
"Rocky Mountain Broadcasting Station"

DAILY EXCEPT SATURDAY AND SUNDAY—

- 10:45 a.m.—Weather, Stock and Produce Reports.
- 11:15 a.m.—Rialto Theater music.
- 5:00 p.m.—Stock and Market Reports.
- 5:30 p.m.—Dinner Concert.

WEEK COMMENCING SUNDAY, OCTOBER 24, 1926

SUNDAY, OCTOBER 24—

- 10:00 a.m.—Service of First Congregational Church. Sermon—"What's Mine Is Ours," by Rev. Robert Hopkin, pastor.
- 4:30 p.m.—Organ recital from First Congregational Church; Royce H. Mintener, organist.
- 6:45 p.m.—Service of First Congregational Church

MONDAY, OCTOBER 25—

- 6:30 p.m.—Book of Knowledge program by H. G. Knight.
- 7:00 p.m.—Instrumental program by Scheuermans Colorado Orchestra.
- 7:15 p.m.—Scientific football Tom McNamara.
- 7:25 p.m.—Studio program: Minstrel Show, KOA Minstrel players, Freeman H. Talbot, director. KOA Orchestra, Lewis H. Chernoff, director, and incidental music by miscellaneous artists.

TUESDAY, OCTOBER 26—

- 2:15 p.m.—Talk, "Europe," given by E. D. Whitley.
- 2:30 p.m.—Matinee for housewives.
- 3:30 p.m.—Question Box, given by Margie Bond.
- 3:45 p.m.—Fashion Review.
- 6:30 p.m.—Farm Question Box.

WEDNESDAY, OCTOBER 27—

- 5:27 p.m.—National Farm Radio Council talk.
- 6:30 p.m.—Wynken, Blynken and Nod time.
- 7:00 p.m.—Instrumental program by Scheuerman's Colorado Orchestra.
- 7:15 p.m.—Scientific football, Tom McNamara.
- 7:25 p.m.—Studio program: Part I—Special Navy Day program. Part II—Popular program.

THURSDAY, OCTOBER 28—

- 2:15 p.m.—Talk, "South America," given by E. D. Whitley.
- 2:30 p.m.—Matinee for housewives, presented by Ruth Spivak School of Dramatic Art.
- 5:30 p.m.—Dinner concert, Brown Palace String Orchestra.

Silent Night.

FRIDAY, OCTOBER 29—

- 11:15 a.m.—Instrumental concert by Denver Union Pacific Shop Employees' Band
- 2:15 p.m.—Talk, "Australia and the South Seas," given by E. D. Whitley.
- 2:30 p.m.—Matinee for housewives.
- 3:30 p.m.—Question Box, given by Margie Bond.
- 5:27 p.m.—United Press Weekly Sports Review.
- 6:30 p.m.—Preview of International Sunday School Lesson.
- 7:00 p.m.—Instrumental program by KOA Orchestra.
- 7:15 p.m.—Scientific football, Tom McNamara.
- 7:25 p.m.—Studio program

SATURDAY, OCTOBER 30—

- 10:45 a.m.—Weather, road reports, stocks, markets and livestock.
- 11:15 a.m.—Organ recital, Aladdin theater, Denver.
- 6:00 p.m.—Football finals, courtesy Associated Press and Denver Post.
- 9:30 p.m.—Dance program, Scheuerman's Colorado Orchestra, from Colorado Club, Denver.

DEALERS! DON'T MISS A COPY OF THE RADIO BUYERS' GUIDE—OUT NOVEMBER 1

Navy Utilizing Short Waves

Realizing that Radio is the only practical means of communication between shore stations and ships and between ships themselves, the communication experts of the Navy have embarked on a program to develop as many channels in the ether as possible and to utilize them economically. Although they will continue to use older style, the long-wave or low-frequency method, Naval experts are now planning to develop the high-frequency or short-wave service, with such funds as are available. During July, traffic on high-frequency increased 65 per cent in volume over the amount handled in June, and transmission by this method across the Pacific increased by 46 per cent. The trans-Pacific circuit from San Francisco via Honolulu and Cavite is now operating well on high-frequency, but will be supplemented soon by an additional circuit between a Pacific Coast station, Tutuila and Cavite. Home signals and Navy press now are sent via short waves as well as long.

A method to overcome the curious behavior of the short waves, which do not follow the ordinary routes taken by longer-wave transmissions, has been perfected. It was found that short-wave transmissions could not be heard at all distances from a source; in other words, the waves skipped some points and could only be received at certain distances. By transmitting each short-wave message on four different channels, it is found that one of the four carrier waves is available at all distances from the station, up to the limit of its transmission. Knowing the four channels used are in the 4,000, 8,000, 12,000, and 16,000 bands, and that messages are about to be transmitted, the radio operators on ships listen in on the frequency which is more likely to reach them, dependent on their location. An

operator knows how far his ship is from the station, and chooses a frequency on which to listen, based on his knowledge and the phenomena of the skip wave. At first it was feared that the short-wave system, due to its skip distance handicap, would not be available for naval use except between shore stations or ships, the definite location of which were known. But the new method of transmitting on four frequencies has overcome this difficulty and this new service is now reliable in spite of summer static.

The Navy now has short wave stations in Washington, San Francisco, Key West, Puget Sound, San Diego, Cavite, Guantanamo, Cordova, Honolulu, Balboa, Guam, Tutuila, Lakehurst, Norfolk, and Charleston. All of these stations are handling traffic daily, and it will be noticed that with stations on both sides of the Pacific, regular trans-Pacific communication is now possible. The stations in California now communicate with those in Alaska, while Washington is in touch with the stations on the West coast, the Canal Zone, and the West Indies.

Following the establishment of the first short-wave station at Anacostia about a year ago, experimental short-wave receivers were put on some of the Navy's vessels. The early tests were so successful and enthusiasm ran so high that today practically 100 ships of the Navy have experimental or hand-made receivers, so that they can listen in on the short-wave stations.

After successful tests on the Denver, the cruisers Memphis and Pittsburgh were equipped with two of the first factory made short-wave transmitters, and it is understood that six more sets will soon be placed on other craft. Eventually all flagships will have sets rated at from 500 watts to 5 KW.

Blax Three Tube Batteryless Set

The world "do move." In no way is the truth of this statement more thoroughly proven than in radio. This time, a Los Angeles experimenter has perfected a simple 3-tube set which works very satisfactorily on the electric light current.

Murray J. Black, 918 Black Building, Los Angeles, who developed this "Blax" tuned radio frequency set, refers to it as follows:

"Just as the public demanded a self-starter for their automobiles so are they now requiring a radio without batteries.

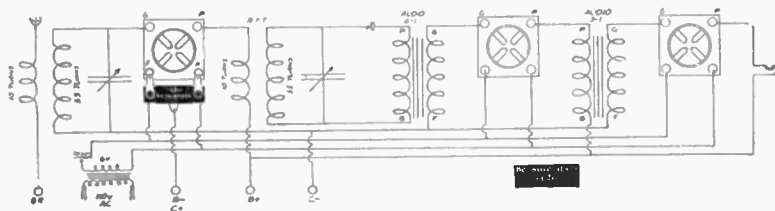
"I feel that the Blax tuned radio frequency set, using Blax A. C. polarizer, is entirely satisfactory for ordinary uses. The set is simple, is reasonably selective and has plenty of volume—especially on local programs.

Should you wish to increase the wave length reception of the set, add a few coils; to lower the wave length reception, remove a few turns.

Most any tuned radio frequency coils will do in place of the ones described, providing they are properly neutralized and balanced.

Placing a .001 or .002 fixed condenser across the primaries (between P. & B.) of either or both of the audio transformers will generally improve the quality of reception.

The ordinary doorbell transformer lacks sufficient capacity to light three 201A tubes without heating and interfering somewhat with reception. Black Bros., Inc., 918 Black Building, Los Angeles, have had transformers especially designed and wound to meet the requirements of this set. Furthermore,



List of Parts

Two radio frequency transformers, 2 variable condensers (.00035 to .0005 MF capacity), 2 audio transformers, 3 tube sockets, 1 jack, 1 rheostat (10 to 20 ohm), 2 dials, 1 panel (7x12 or 7x14), 1 Blax polarizer, 1 doorbell transformer (20 watt), 1 crystal detector, 3 201A tubes, 1 fixed condenser (.002 or .001 capacity).

Suggestions for Construction

Both (T_1 & T_2) coils may be wound on 2½" tubing with 55 turns of 24 D. C. wire on the secondaries and 10 turns on the primaries.

In the event that you wish to use Harkness coils or to change over a Harkness set, remove all but 8 or 10 coils on the primary of the second coil. Then, should the set oscillate, remove another turn or two. The first coil may remain the same.

The number of turns on the secondary of both coils should be the same. The exact number depends on several factors: the size of the wire, its insulation, the size of the tubing and the capacity of the tuning condenser.

these heavy duty transformers will operate two tubes even more satisfactorily than the regular transformer.

For local reception it is generally unnecessary to use both the ground and aerial. Mr. Black says, "I have seen a number of sets giving good service without an aerial; the ground was connected to the aerial post. This makes the set very selective."

Mr. Black wishes to give credit to "Radio" Uhl for ideas and assistance in experiments.

Prospecting With Radio

(Continued from Page 17)

picture screen by a regular projector and studied. The result shows what is practically a section view of the radio "boring" or "sounding" into the earth, the different substances being revealed by the light and dark lines which definitely depict the mineral and metal "echoes," as well as their depths below the surface.

"WHO'S WHO" In RADIO

—and the reasons why

—*♦*—

The Story of an Ideal

A quarter of a century ago a woman conceived the idea that if she were to organize a school dedicated to the purpose of making men more efficient with their mind and hands that it would fill a long felt want.

This woman further believed that if she gave 100 per cent quality instruction

acid test of experience. Its graduates have gone into the automobile industry, the electrical industry and the radio industry and done their share in the development of these great industries.

It has been said that women will stand by their ideal, make sacrifices for it, convinced that what they have sown will bear fruit. Many men have started into business with high ideals, but when the first temptation came to cut the quality in order to make more money, they did not hesitate to sacrifice their ideals in order to make the additional profits.

Mrs. Rosenkranz has steadily refused to do this. In fact, she has consistently raised the quality of the National Automotive and Electrical School until today it enjoys the reputation of being the leading quality school in automotive and electrical engineering.

Over 16,000 men have graduated from this institution, and many of them are occupying important positions, making more money than they ever dreamed of making in their old lines of work.

Other schools have come and gone during these years, but the National remains and will remain through the years to come as an example of what one human being can do who will stand steadfast to his purpose.



MRS. ROSENKRANZ

and a courteous consideration of every student that her school would be a success.

In all of these years she has never wavered from her idea.

The National Automotive and Electrical School of Los Angeles has stood the

Timely Trade Topics

It has been called to our attention that parties are offering units for sale to the trade in Los Angeles, claiming that they are Utah Units. We wish to warn the trade that they should be careful in buying these. All Utah Units bear the name. Before buying units examine them for this distinguishing mark.

The Santee Company, manufacturers of the "Radio Power Box," have adopted a new sales policy. The sale of this remarkable instrument is now discontinued with the trade and will hereafter be sold direct to the set owner for cash, at one-half of the former price. This provides the opportunity for Super-Heterodyne owners to equip their sets at a very low cost.

Ralph E. Hetzel, of 8303 Santa Monica Blvd., Los Angeles, telephone GRanite 5874, announces the opening of the HETZEL RADIO SERVICE. Mr. Hetzel is an authorized dealer for Federal Ortho-Sonic and Kemper Super-Harmonic.

Another instance where community interests cleared up a lot of local radio interference is reported from Johnstown, N. Y. A local dealer, who believed that his sales of radio equipment and accessories were falling off because local electrical interference was hindering the attempts of the fans to listen in, hired a trouble shooter and soon cleaned up the town, and, incidentally, sold out his whole stock. Besides the services of a radio expert, he secured the cooperation of the local electric power, light and telephone companies. The combined efforts of these men, who made a tour of the town with a portable trouble shooting set, located and remedied 85 per cent of the interference.

Mr. Don Taylor, formerly associated with the C. W. Smith Company and the Scott Sales Company of Los Angeles, is now located at 3023½ South Grand avenue, as head of the Don Taylor Company, factory representatives for the Sturgess Multiple Battery Corporation; the Amplex Instrument Lab. manufacturers of Harmo-Sonic Radio Receivers; Hart & Heyman; Utt-Williams Electrical Products Company; Arthur Coil Company; and the Fore Electric Manufacturing Company, manufacturers of the Fore Battery Charger. Mr. Taylor will be glad to greet his old friends at his new location.

Mr. Frank H. Deardorf, who has been prominently identified in the Radio circles in Los Angeles for some time, has been appointed factory representative of the Dejur Products and the Leaf-Burkhart Company, manufacturers of the Leaf-Burkhart Cone Speakers. Mr. Deardorf is located at 3023½ South Grand avenue.

The Spartan Electric Corporation of 350 West 34th Street have been appointed distributors, covering New York and metropolitan territory, for A-C Dayton Radio Receivers, manufactured by the A-C Electrical Manufacturing Company, Dayton, Ohio.

Reports of a number of sub-committees of the standards committee of the Radio Manufacturers Association have been submitted to the membership of that organization within the past few weeks. These reports indicate considerable progress, and point to the day when simplified practices will be prevalent in the radio industry.

Broadcasters' Digest

Revision of the weekly schedule of broadcasting observed at KGW has resulted in the shifting of the weekly meeting of the KGW Movie Club to Friday evenings instead of Mondays, as has heretofore been the evening reserved for this feature. The time of presentation has also been changed. Hereafter the Movie Club will open its meetings at 8 o'clock, one hour later than the former time, and will continue until 8:30.

"The White Elephant" is the name of a three-act comedy which will be broadcast by the KGO Players, directed by Wilda Wilson Church, on Thursday evening, October 28, at 8 o'clock. Music between acts will be played by the Arion Trio.

Announcement has been made that Rev. Bruce Brown will preach over station KFI Sunday, October 24th, at 10 a. m.

Scheuerman's Colorado orchestra, said to be the finest of its kind in the west, is now broadcasting late dance programs from the Coronado club every Saturday night, beginning at 10:30.

It seems that a part of the contract with Mascagni, the temperamental Italian composer, if he had come to this country, was that he had to be "protected" from hearing any jazz over the radio while in our midst.

Herbert Hoover, Secretary of Commerce, and at one time Czar of Radio, will be heard over KPO and KFI, broadcasting simultaneously, from 8 to 9 p.m. on Saturday, October 30. This will originate over KPO, and be carried to KFI over private telephone wires connecting these stations.

KNX, the Evening Express, celebrated its third birthday on the 10th of the month. A great party was staged at the studio, starting at midnight and continuing until the wee small hours.

All of the exclusive KNX artists were on hand to help in the celebration, many of them having been on the opening night program for KNX. When the orchestra, Mittendorf's Merrymakers, was on the air the studio doors were opened wide and part of the throng danced in the outer room.

KNX was a real host and plenty of refreshments were served during the course of the evening. Among some of the artists present were June Pursell, Ron Wilson, Calmon Luboviski, Claire Mellonino, Chet Mittendorf, Paul Finstein, the Optimist Club quartet, Leroy Kullberg, Tom Breneman, Marcia Obuchon, Joseph Diskay, George Gramlich, Charles Dimond, Sol Hoopii, Frank Churchill, Leah Wood Moore, Evelyn Kemp, Howard Johnson, Frank Gelger, Edward Novis, Dan Gridley, Dudley Chambers and his KNX Rounders, Eddie of KNX, Eunice Wynn, Louise Sullivan and her trio, Misha Gegna, Louise Howatt, Edward Murphey and many, many others.

The first fall meeting of the Butte Radio Club was held on the evening of October 9th. Judge W. E. Carroll presided. A large and enthusiastic number were present, including eleven new members of the organization. Brief but interesting addresses were made by Judge Carroll, C. J. Traurmen, publicity director of the club, and G. O. Mudridge. This club is a fast growing organization and promises "big things" for the coming fall and winter.

Excessive resin from solder can be removed with alcohol and a soft cloth.

~~PHILCO~~ Socket Power A-B

Runs Any Radio From Your House Current

CALL WE. 6528

FOR FREE DEMONSTRATION

OR

Mail This Coupon Today

J. M. ANDREWS RADIO

209 West 18th St.

Los Angeles, Calif.

Absolutely

No Hum!

No Distortion!

PHILCO A AND B

Socket Power will give you perfect Radio A and B Power from your electric lighting current, absolutely without the least hum and without the least distortion. One switch controls everything—your A power, your B power, and even the radio set itself.

Authorized Dealer

One Dial Shamrock Receiver

SPECIAL OFFER COUPON

Gentlemen:

Please send me **WITHOUT COST** and **WITHOUT OBLIGATION** complete illustrated literature describing the PHILCO A and B Socket Powers. I also desire the full details of your easy payment plan and trade-in allowance.

Name.....

Address.....

Make of Radio Set.....

— ON ITS WAY —

The Fall Edition of the

RADIO DOINGS CALL AND LOG BOOK

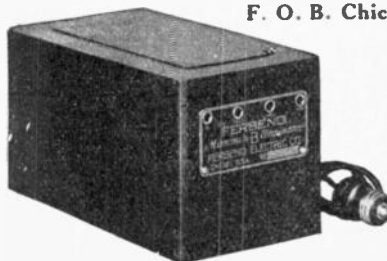
Now Being Compiled

NO MORE "B" BATTERIES

WITH FERBEND'S IMPROVED B BATTERY ELIMINATOR

Only \$12.50 Complete

F. O. B. Chicago - \$14.75 Delivered Here



Just plug into your light socket and forget your battery troubles. Lasts indefinitely.

Guaranteed equal or superior to any eliminator regardless of price. Operates any set. Delivers 90 volts.

Distributed Exclusively by

NATIONAL ELECTRIC CO.

Phone VAndike 0643

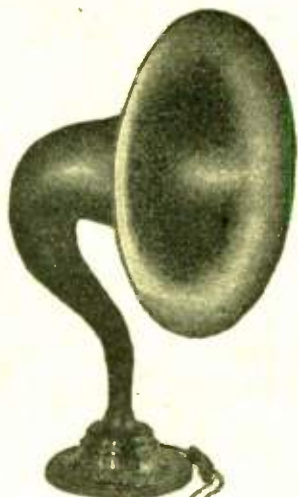
835 S. Olive St.

Los Angeles, Calif.

Original
Nathaniel Baldwin

Salt Lake City

This Signature Is Your Guarantee



Concert Grand

***“You Can’t Beat
the
Concert Grand”***

Mica Diaphragm, mahogany finish

\$35.00

Other Styles of Horns

CONCERT, imitation black leather,
aluminum diaphragm.....\$25.00

JUNIOR, aluminum diaphragm.....15.00

***COMPLETE LINE OF ANY
STYLE LOUD SPEAKERS***

Whatever your requirements are, we have it

Southern Distributors

MYERS ELECTRIC SUPPLY CO.
1727 S. Los Angeles St., Los Angeles

PACIFIC MOTOR SUPPLY CO.
922 South Main St., Los Angeles

NEILSON RADIO SUPPLY CO.
311 North Central Ave., Phoenix, Arizona

THE DANIEL SPECIALTY CO.
5234 Melrose Ave., Los Angeles

SUNSET ELECTRIC CO.
1141 First St., San Diego

TRI-STATE MOTOR CO., INC.
320-330 W. San Antonio St., El Paso, Texas

Warehouse stock, KEELER, WHITE CO., Pacific Coast Agents

**211 South San Pedro St.
LOS ANGELES**

**509 Mission St.
SAN FRANCISCO**

**406 Occidental Ave.
SEATTLE**



\$50. to \$250 a week
IN WORK THAT IS
ALMOST ROMANCE

Be a Radio Expert

Get into the great new Big-Pay Industry, Radio. If you're earning a penny less than \$50 a week, clip coupon now. Send for Amazing Free Book. Be a Radio Expert, and draw

down easy money for the easiest and most fascinating work in the world. Positions everywhere. Thoroughly trained men are in big demand. Need for Radio Experts in every community. Short hours. BIG

PAY. Free book gives all the facts. Astonishing opportunities—thousands of them. Every day N. R. I. trained

men are taking good places in the Radio field. Free book tells all about their success. Send for it now!



Learn Quickly and Easily

AT HOME Master Radio Engineers will show you how to qualify quickly and easily at home, for Radio's fine jobs. We guarantee to train you successfully. Lack of experience no drawback—common schooling all you need. Our tested, clear methods make it easy for you. Send coupon now for free proof.

Instruments Given with Course

All instruments shown here and many others given to students for practice work while learning. Receiving sets, from simplest kind to thousand mile receiver. An **UNEQUALLED OFFER**. Many other big features for limited time only.

Famous Training That "Pays for Itself"

Spare time earnings are easy in Radio. Increase your income almost from the start through practical knowledge we give you. This is the famous practical training that pays its own way.

PROOF



"Accepted a position with Chicago Daily News-Station WMAQ. My income practically doubled, thanks to your fine course."

Keith Kimball, Chicago.



"Just been made sales Manager of this Radio concern—a big raise in pay. Regret I did not take course sooner."

R. E. Jones, Bay City

Get
this
Amazing
Book

Most amazing book on Radio ever written—full, interesting facts about this great field and how we

prepare you and help you start. You can do what others have done. **GET THIS BOOK.**

Send Coupon

offer, including all instruments—Send coupon today for special limited you'll get full particulars by return mail.

Radio Needs Trained Men

National Radio Institute

Dept. TV-1
Washington, D. C.

LARGEST RADIO SCHOOL IN THE WORLD

ORIGINATORS OF RADIO HOME STUDY TRAINING

You get all of these

RICH REWARDS IN RADIO

MAIL THIS NOW

NATIONAL RADIO INSTITUTE
Dept. TV-1, Washington, D. C.

Without obligating me in any way, send me your free book, "Rich Rewards in Radio," and all information about your practical, home-study Radio course.

Name.....

Address.....

RAY-O-VAC BATTERIES

*Have
Staying Power
and
Low Internal
Resistance*



No. 9303
Master Ray-O-Vac



**Your Set Will Work Better and Longer With
Ray-O-Vacs**

Ray-O-Vac radio batteries give a steady, uniform voltage and have exceedingly low internal resistance.

You need a low resistance battery for transmission as well as reception.

The Ray-O-Vac battery has the lowest internal resistance of any dry cell battery made, with staying power that gives it longer life. Yet it costs no more than ordinary batteries.

The dealers from whom you usually buy can undoubtedly furnish you with Ray-O-Vac radio batteries. If you have any difficulty getting them, write us for the name and address of a nearby dealer or jobber who can supply you.



FRENCH BATTERY COMPANY

MADISON, WIS.

737 Terminal Street

Los Angeles



*“When you buy your new
‘B’ batteries it will pay you to follow
the Eveready rules”*

RECEPTION is improving steadily these evenings as the weather grows colder. There is more distance to be had at the turn of the dial. New features come upon the air and the riches of radio never were so profuse.

When did you buy your “B” batteries? If they were Eveready “B” Batteries, installed according to the Eveready rules, you will know if they need replacing. These are the rules:

On all but single tube sets—Connect a “C” battery. The length of service given below is based on its use.*

On 1 to 3 tubes—Use Eveready No. 772. Listening in on the average of 2 hours daily, it will last a year or more.

On 4 or more tubes—Use the Heavy-Duty “B” Batteries, either No. 770 or the even longer-lived Eveready Layerbuilt No. 486. Used 2 hours daily, these will last 8 months or longer.

*NOTE: A “C” battery greatly increases the life of your “B” batteries and gives a quality of reception unobtainable without it. Radio sets may easily be changed by any competent radio service man to permit the use of a “C” battery.

Of course, if you listen longer than two hours daily, or if you use a power tube, your “B” batteries will not last quite so long as given above. And if you listen less, they will last longer.

Send for the booklet, “Choosing and Using the Right Radio Batteries,” sent free on request. It tells about the proper battery equipment for use with the new power tubes. There is an Eveready dealer nearby.

Manufactured and guaranteed by
NATIONAL CARBON CO., INC.
New York San Francisco

Canadian: National Carbon Co., Limited
Toronto, Ontario

EVEREADY
Radio Batteries
—they last longer

“RADIO”

**For October
IS NOW
ON SALE**

**AT
Newsstands**

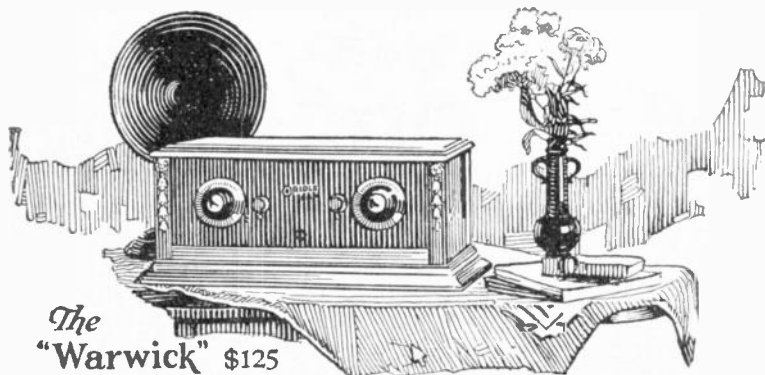
**25
Cents
Per Copy**

ANOTHER FINE ISSUE

ORIOLE **RADIO** **RECEIVERS** ~

WHEN you step to your radio set and turn the dials—does it respond,—*always*, day or night, winter or summer,—with clear and satisfying entertainment? It will if your set is an Oriole. The remarkable Trinum Circuit has knocked out “temperament” from Radio and you can depend upon it to do *what you want when you want it*. Cut right through powerful local stations and select the one you want—that’s Oriole’s assurance.

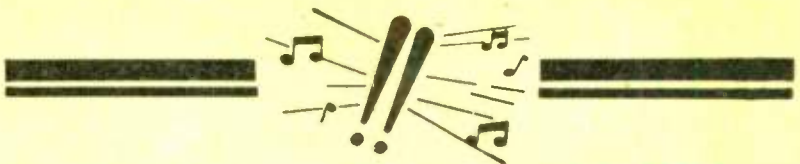
1. **Tone:** Clear, pure, true to the original. Full rounded liquid tones of the violin or piccolo, the deep rumble of the bass, the clear spoken voice.
2. **Volume:** More than you will ever need—but the reserve volume assures tonal beauty because you don’t need to force the tubes.
3. **Selectivity:** It’s positively amazing the way the slightest turn of the dial tunes sharply to any station, cutting out all the others.
4. **Quality:** Built like a fine watch—precision manufacture from the finest low loss parts. Cabinets of transparent grain black walnut, beautifully designed and finished.
5. **Beauty:** An Oriole set enhances the finest home surroundings, grace and symmetry of design, and that “quality appearance” that comes only from true craftsmanship.
6. **Price:** A price range within reach of all. Three types of cabinets but the same supremely fine Radio instrument in each.



The
“Warwick” \$125

Sales Department
THE ZINKE CO.
 1323 S. Michigan Ave.
 Chicago, Ill.

Manufactured by
W-K ELECTRIC CO.
 Kenosha, Wis.



ORTHO-SONIC

By R. A. F. Co.

Federal Radio

New Beauty in Radio



E-40 Ortho-sonic

Six tubes — wet or dry battery type. Single control without loss of efficiency. Extremely selective. Rugged — all-metal construction — will last a lifetime. Illuminated scale — acts as pilot light. Built in speaker — latest acoustical design. Receiver compartment slides out to install tubes. Genuine walnut cabinet, inlaid with rosewood. Ample space for all batteries. Width, 31 1/4 inches; height, 55 inches; depth, 19 1/4 inch. Price, without accessories,

\$300.00

D-10 Ortho-sonic

Five tubes — wet or dry battery type. Centralized control. Very selective. Genuine mahogany cabinet, mahogany-lined. Finished in a rich brown. Length, 24 inches; height, 11 1/4 inches; depth, 12 1/4 inches. Price, without accessories,

\$100.00

D-5 Console

Specially designed and finished to match D-10. Ample space for all batteries. Length, 26 1/4 inches; height, 30 inches; depth, 18 1/4 inches. Price,

\$30.00



SEE A FEDERAL DEALER NOW

Exclusive Wholesale Distributors

YALE RADIO ELECTRIC CO.

1111 Wall St., Los Angeles, Calif.

Phone WESTmore 3351