


PHILCO



Radio Log

- Whenever "strangers" in the air
Are picked up by your set,
Don't sit and wonder who they are
Because you haven't met.

With this identifier you
Can name them right away.
No wait for slow announcers now
At any time of day!

50	75	100	150	200	250	300	500	750	1000	POWER	1500	2000	2500	5000	10000	15000	25000	50000	
F	G	H	I	J	K	L	M	N	O	CODE	P	Q	R	S	T	U	V	W	

There are only 97 numbers on YOUR dial to accommodate more than 700 radio stations of North America. Stations at each number are listed MAP-LIKE beside 97 blank spaces. The 97 groups are in exact order, so, YOUR dial number recorded every 5th, or 10th, space enables you to estimate those skipped. To identify those heard by chance, station announcements will seldom be necessary. You can expect to hear stations of greater power, from greater distances. Note the letter at the extreme right and code above. *Columbia (WABC) †National Red (WEPF) ‡National Blue (WJZ) †National Red OR Blue Network

Revision 39

COPYRIGHT, 1933—BY HAYNES' RADIO LOG
161 WEST HARRISON ST., CHICAGO, ILLINOIS

Fall 1933

WESTERN Wash., Ore., Cal., Utah, Etc.	MIDDLE WESTERN Minn., Ia., Neb., Mo., Tex., Etc.	kilo	Dial No.	CENTRAL Ill., Mich., Ohio, Tenn., Etc.	EASTERN Mass., N. Y., Pa., N. C., Etc.
KFDY Brookings, S. D.	†KSD-KFUO St. Louis, Mo.	540		*CKLW Windsor-Detroit.	S
†KOAC Corvallis, Ore.	†KFYR Bismarck, N. D.	550		*WKRC Cincinnati, Ohio.	O
*KLZ Denver, Colo.	KGTZ Springfield, Mo.	560		*WINO Chicago-Gary.	O
†KTAB San Francisco, Cal.	KFOM Beaumont, Tex.	570		*WNOX Knoxville, Tenn.	O
*KVI Tacoma, Wash.	*WNAX Yankton, S. D.	580		*WKBN Youngstown, Ohio	O
†KMTR Los Angeles, Cal.	KGKO Wichita Falls, Tex.	590		WEAO Columbus, Ohio.	O
CKUA-CHMA Edmonton.	*WIBW Topeka, Kas.	600		WOBU Charleston, W. Va.	M
†KMJ Fresno, Cal.	KSAC Manhattan, Kas.	610		*WDBO Orlando, Fla.	K
†KHQ Spokane, Wash.	†WGW Omaha, Neb.	620		WKZO Kalamazoo, Mich.	O
KFGQ Anchorage, Al.	XEPN Pedroas Negras, Conh. W	630		†CFCF Montreal, Que.	M
†KFSD San Diego, Cal.	*WMT Waterloo, Iowa.	640		*WREC Memphis, Tenn.	M
*KFRC San Francisco, Cal.	†WQAF Kansas City, Mo.	650		WJAY Cleveland, Ohio.	M
†KGW Portland, Ore.		660		†WTMJ Milwaukee, Wis.	O
†KTAR Phoenix, Ariz.	KFRU Columbia, Mo.	670		WGBF Evansville, Ind.	M
CJGX Yorkton, Sask.	WOS Jefferson City, Mo.	680		WAIU Columbus, Ohio.	M
†KFI Los Angeles, Cal.	WOI Ames, Iowa.	690		†WSM Nashville, Tenn.	W
KPCB Seattle, Wash.	XFG Mexico City, D. F.	700		XEM Matamoros, Tams.	W
	WAAW Omaha, Nebr.			†WMAQ Chicago, Ill.	S
†KPD San Francisco, Cal.	KFEQ St. Joseph, Mo.			CMAF Havana, Cuba.	O
CFAC Calgary, Alta.	CJCJ Calgary, Alta.			NAA Arlington, Va.	O
	XET Monterey, Mex.			†WLW Cincinnati, Ohio.	W

KMPC Beverly Hills, Cal.	XEN Mexico City.	710		WDR Newark, N. J.	W
		720			
CJCA Edmonton, Alta.	XEF-XER Villa Acuna.	730		*WGN Chicago, Ill.	V
	KMMJ Clay Center, Neb.	740		CMK Havana, Cuba.	S
†KGU Honolulu, Hawaii.	XEAN Juarez, Chi., Mex.	750		†WSB Atlanta, Ga.	W
KXA Seattle, Wash.	WEW St. Louis, Mo.	760		†WJR Detroit, Mich.	T
	*KFAB Lincoln, Nebr.	770			
KELW-KTM California.	XEP Mexico City.	780		*WBBM Chicago, Ill.	V
†KGO San Francisco, Cal.		790		†WMC Memphis, Tenn.	O
	†WBAP Ft. Worth, Tex.	800		CMCQ Havana, Cuba.	M
	WFAA Dallas, Tex.	810		CMJK Camaguey, Cuba.	M
	*WCCO Minneapolis, Minn.	820			
	XFI Mexico City, Mex.	830		*WHAS Louisville, Ky.	V
	†KOA Denver, Colo.	840		WRUF Gainesville, Fla.	S
	XETM Matamoros, Tams.	850		CMC Havana, Cuba.	M
KIEV Glendale, Cal.	KWKH Shreveport, La.	860		WWL New Orleans, La.	T
	WHB Kansas City, Mo.	870			
	XEFO Tiajuana.	880		†WENR-†WLS Chicago, Ill.	W
		890		WCOG Meridian, Miss.	O
CJRM-CJRW Saskatchewan	WSUI Iowa City, Ia.	900		WMMN Fairmont, W. Va.	K
KLX Oakland, Cal.	KEKA-KPDF Colorado.	910		WILL Urbana, Ill.	K
KSEI Pocatello, Idaho.	KUSD Vermillion, S. D.	920		WLBL Stevens Pt., Wis.	R
KARK Little Rock, Ark.	KFNF Shenandoah, Ia.	930		CMX Havana, Cuba.	M
KGBU Ketchikan, Alaska.	†WKY Okla. City, Okla.	940		XFF Chihuahua, Ch.	M
*KHJ Los Angeles, Cal.	XEW Mexico City.	950		†WWJ Detroit, Mich.	O
CKY Winnipeg, Man.	†KPRC Houston, Texas.	960		WAAF Chicago, Ill.	O
†KOMO Seattle, Wash.	KFEL-KFXF Denver.	970		CXK Brandon, Man.	M
KROW Oakland, Cal.	KMA Shenandoah, Ia.	980		*WBRC Birmingham, Ala.	M
*KGIN Portland, Ore.	KGBZ York, Nebr.	990		WFIW Hopkinsville, Ky.	O
KFWB Hollywood, Cal.	†WDAY Fargo, N. D.			XEFO Mexico City, Mex.	T
	WHA Madison, Wis.				
	†WABC Kansas City, Mo.				
	†KGHL Billings, Mont.				
	XEAW Reynosa, Tams.				
†KJR Seattle, Wash.	XEAF Tiajuana, Mexico.				

50	75	100	150	200	250	300	500	750	1000	POWER CODE	1500	2000	2500	5000	10000	15000	25000	50000		
F	G	H	I	J	K	L	M	N	O		P	Q	R	S	T	U	V	W		
WESTERN										Dist No.	CENTRAL					EASTERN				
KFVO Los Angeles, Cal. K	†WHO-WOCDes M-Day pt, W									1000	CKOC Hamilton, Ont. M					WORK York, Pa. O				
CKCK-CHWC Regina, Sk. M	KGGF Coffeyville, Kas. M									1010	†WIS Columbia, S. C. M					WPAP-WQAO New York. K				
KQW San Jose, Cal. M	WNAO Norman, Okla. M									1020	†KYW Chicago, Ill. T					WHN-WRNY New York. K				
CFCN Calgary, Alta. T	XEB Mexico City. T									1030	WKAR E. Lansing, Mich. O					WRAX Philadelphia, Pa. K				
KNX Los Angeles, Cal. V	†KTHS Hot Springs, Ark. T									1040	†WTAM Cleveland, Ohio. W					CKNK Toronto, Ont. H				
KWJJ Portland, Ore. M	†KRLD Dallas, Tex. T									1050	WMBI Chicago, Ill. (WCBD) S					WESG Elmira, N. Y. O				
KJBS San Francisco, Cal. H	KFBI Abilene, Kas. S									1060	XENT Nueve Laredo, Mex. W					CHNS Halifax, N. S. M				
	WJAG Norfolk, Nebr. O									1070	CFCA Toronto, Ont. H					†WTIC Hartford, Conn. W				
	WOZ-WCAZ Illinois. H									1080	WJSD-NWAO Milwaukee, W					†WBAL Baltimore, Md. T				
	*KMOX St. Louis, Mo. W									1090	WJJD Chicago, Ill. H					*WDT Charlotte, N. C. V				
CRCV Vancouver, B. C. M	KSOO Sioux Falls, S. D. R									1100	†WAPI Birmingham, Ala. V					WLWL New York City. S				
KGDM Stockton, Cal. K	*KTRH Houston, Tex. O									1110	*WOWO Ft. Wayne, Ind. T					*WPG Annapolis, N. J. S				
KFIO-KRSC Washington, H	WTAW College Station, Tex. M									1120	WMAZ Macon, Ga. M					†WRVA Richmond, Va. S				
KFGS-KRKO Los Angeles M	XEH Monterey, Mex. K									1130	WJW-WBDB*WFAW					WBAI-WBDO-WPHH				
*KSL Salt Lake City, Utah. W	†KVOO Tulsa, Okla. V									1140	WVAE-WJBL-WJBC-WFBE					WBDX-WCDD-WBWB				
XETA Mexico City. O	WOGY Minneapolis, Minn. M									1150	WJW-WALR-WCDS-WKFI					WJJC-WHDC-WFL-WCAK				
	†WQAI San Antonio, Texas. W									1160	WSEN-WHBU-WSIX-WJBY					WJDI-WGDC-WDBL-WFAS				
	WBAZ-WCAT-WIL-KMLB									1170	*WDAE Tampa, Fla. H					WQDX-WPBO-WBAK				
	KGDE-KFJB-KBTM-KGHJ									1180	*WBSB South Bend, Ind. M					*WMBG-WGOC-WLCL-WJEJ				
	WBMS Huntsville, Ala. H									1190	*WFBM Indianapolis, Ind. O					†WCAE Pittsburgh, Pa. O				
	KFVS-KWEA-KOLR-WBQ									1200	WXYZ Detroit, Mich. O					*WNAC Boston, Mass. O				
	KFOR-KGCR-WTAX-KFPW									1210	*WDSU New Orleans, La. O					WKAQ San Juan, P. R. O				
	WHBF-WMTW-WGCM-WIBU									1220	XEFA Mexico City. M					WODA Paterson, N. J. O				
	†WREN-KFKU Lawrence, Kas. O									1230						WAAM-WGCP Newark NJ. O				
	KGGM Albuquerque, N.M. M									1240										
	KLPN Minot, N. D. K									1250										
	KTAT Ft. Worth, Tex. O																			
	WLB-WRHM Minneapolis M																			
	WCAL Northfield, Minn. O																			
KVOA-KWWG-KRGV Tex M	†KOIL Council Bluffs, Ia. O									1260	*WTOC Savannah, Ga. M					*WLBW Erie, Pa. O				
*KOL Seattle, Wash. O	KWLC-KGCA Decorah, Ia H									1270	WASH-WOOD Gr. Rpd. M					†WFBR Baltimore, Md. O				
KFBF Great Falls, Mont. O	*KFOR Colo. Springs, Colo. O									1280	*WJDX Jackson, Miss. M					*WORC Worcester, Mass. M				
†KDYL Salt Lake City. O	†WISA Madison, Wis. M									1290	*WOOD Chattanooga, Tenn. O					WTNJ-WCAM-WCAP NJ M				
*KALE-KFJR Portland, Orem	†WRR Dallas, Tex. M									1300	:WIOD-WMBF Miami, Fla. O					*WJAS Pittsburgh, Pa. O				
KFAC Los Angeles, Cal. O	†WESB Superior, Wis. O									1310	WTRC-WRA W-WBRE					WNEI San Juan, P. R. M				
KMED-KFBK-KKRD-KFYO	*KTSA San Antonio, Tex. O									1320	WEXL-WTJS-WFOF-WBEO					WBBR-WFAB New York. O				
KIFH-KGCX-KFPL-WDAH	*RFH Wrenita, Kas. O									1330	WBOW-WMBO-WROL-WLBC					WEVD-WHAZ New York. M				
KCRJ-KIT-KGFW	*KFI Kansas City, Mo. O									1340	†WSMB New Orleans, La. M					WOL-WKAV-WEBR-WTEL				
KID Idaho Falls, Idaho. K	KFSM-WBCK-KFXR-WIAS									1350	†WSAI Cincinnati, Ohio. M					WGH-WHAT*WJS-S-WNBH				
KMO Tacoma, Wash. K	WAML-KRMD-KGEZ									1360	*WSPD Toledo, Ohio. O					WJAC-WFBC-WGAL-WSAJ				
KGB San Diego, Cal. O	KGBX-WCLS-KFGQ									1370	WEHC Charlottesville, Va. M					*WADC Akron, Ohio. O				
*KFPY Spokane, Wash. O	KGHF Pueblo, Colo. K									1380	WGES Chicago, Ill. M					*WORC Hartford, Conn. M				
KIDO Boise, Idaho. O	*KSCJ Sioux City, Ia. O									1390	WHDW-WHBD-WJPK-WJPM					WCOA Pensacola, Fla. M				
KGER Long Beach, Cal. O	*KATP Eau Claire, Wis. O									1400	*WGL-WHBO-WJRN-WJTL					WMSG-WBNX-WAWZ NYK				
KGAR-KFJM-KFBL-KICA	†KWK St. Louis, Mo. O									1410	WSMK Dayton, Ohio. J					*WFBL Syracuse, N. Y. O				
KOOS-KRE-KVL-KUJ	†KQIR Butte, Mont. M									1420	*WHK Cleveland, Ohio. O					*WCSL Charleston, S. C. M				
*KOH Reno, Nev. M	WQBC Vicksburg, Miss. O									1430	WKBK Indianapolis (WBAE)					WLEU-WTBO-WLIM-WJMS				
*KOY Phoenix, Ariz. O	KQFG-KCRC-KMAC-KNO									1440	*WBCM Bay City, Mich. M					WSPA-WAGM-WHDL WMAS				
KLO Ogden, Utah. M	KGKL-KLUF-KWKC-KSO									1450	*WODX*WSFA Alabama M					*WHPA Manchester N.H. M				
KGRS-WDAG Marillo, Tex O	*WKBH La Crosse, Wis. O									1460	WELL-WMBC-WPAD-Wam C					*WFEA*WBAK*WNEC*WOKO				
KGIX*WAGO	*KLRA Little Rock, Ark. O									1470	WKBI-WHFC-WEHS Chgo H					WCSA-WSAN Allentown. K				
KGFF-KUMA-KORE-KBPS	KOCW Chickasha, Okla. K									1480	WLL-WMBC-WPAD-Wam C					WSAR Fall River, Mass. K				
KGGC-KXL-KGIW-KIOW	WHBL Sheboygan, Wis. M									1490	*WCAH Columbus, Ohio. M					WHOM Jersey City, N. J. K				
KGFC-KXK-KGFW	KFLV Rockford, Ill. M									1500	*WNR Memphis, Tenn. M					*WJSV Alexandria, Va. T				
CFCT Victoria, B. C. F	WMBH-WLBF-KABC-WJBO										*WBG Greensboro, N. C. M					*WKBW Buffalo, N. Y. S				
†KECA Los Angeles, Cal. O	KFIZ-KICK-KWCR-KCMC										†WGAR Cleveland, Ohio. M					WWSW-WFOV-WNBF-WMIL				
KDFN Casper, Wyo. M	KGNF No. Platte, Neb. M										WTFI Athens, Ga. M					WSYB-WMBQ-WRRL				
KLS Oakland, Cal. K	*WMBD Peoria, Ill. M										*WLAC Nashville, Tenn. S									
	†WTD Quincy, Ill. M										†WCKY Covington, Ky. S									
	*KTBS Shreveport, La. O										WMPC-WKEU-WRDW									
	†KSTP St. Paul-Minneapolis V										WKBZ-WKBV-WOPI-WPEN									
	KOMA Oklahoma City, Okla S																			
KREG-KDB California. H	KQBE-KNOW-KPJM																			
KXO-KGFK-KPQ	WHEF-KGKY-KGFI																			

Of the 97 frequencies, 40 are used individually by super-power stations at night: 640 to 870; 980 to 1170; 1460 to 1490. How many of them can you tune in?

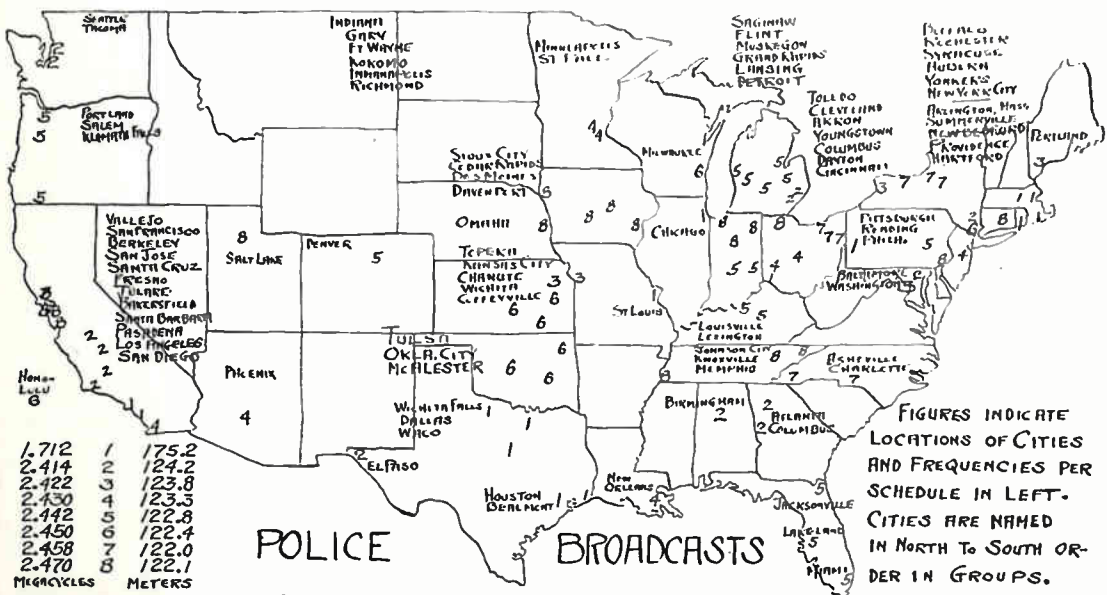
● From advance programs of the three major networks, we compile RADIO MENU. It lists the three programs to be heard during each of the sixteen, 15 minute periods each evening of the week in a new and compact form. Most repeat from week-to-week so they are reasonably accurate for a month or more. A number appears after each listing, directing you to one of six small maps, which shows the area served by that program. Listeners outside those areas will be guided to desired programs by the symbols *, † and ‡ designating the network stations on the preceding pages of this log. Those within the area are guided in the same manner to a local or nearby station. It is readily adapted to any time zone. Radio Menu serves to remind listeners of their favorite programs, which might otherwise be forgotten and acquaint them of many splendid features that are not listed in their local papers, by reason of there being no local outlet.

● For the automobile radio. It is inconvenient to thumb a book while driving, so we have prepared a skeleton chart along the lines of the preceding pages comprising more than 350 of the more prominent call letters. It is on a single card, for the pocket of the car or some other convenient place.

● In presenting the schedule below, which not only covers all scoring rules for contract, but has calculated them as well for every combination, it is suggested: If you have not graduated to Contract, continue your regular game of Auction but SCORE Contract. It is an easy first step and the fine points of the game will be discovered and the articles in your daily newspaper will be of added interest and help.

4 Honors in One Hand 100		CONTRACT BRIDGE SCORE-AT-SIGHT		Two Game Rubber 700	
5 Honors in One Hand 150				Three Game Rubber 500	
4 Aces (No Tie) One Hand 150				Rubber Incomplete 1 Game 300	
100	250	450	700	1000	1750
50	100	150	200	250	350
ONE TWO THREE FOUR FIVE SIX SEVEN					
♣ NO Trump		♣ NO Trump		♣ NO Trump	
20	30	40	60	80	120
30	30	60	90	120	180
100	200	300	400	500	750
200	400	600	800	1000	1500
		*Under Tricks Penalty Vulnerable		*Under Tricks Penalty NOT Vulnerable	
		†Penalty, if Doubled, NOT Vulnerable		‡Penalty, if Doubled, NOT Vulnerable	
		*Multiply by 2 if Doubled; by 4 if Re-Doubled.		*Multiply by 2 if Re-Doubled.	
		*BID AND MADE Bonus, Over Tricks		*BID AND MADE Bonus, Over Tricks	
		†Bonus, Over Tricks Doubled NOT Vul.		†Bonus, Over Tricks Doubled NOT Vul.	
		‡Bonus, Over Tricks Doubled Vul.		‡Bonus, Over Tricks Doubled Vul.	
				Slam Bid 1500	
				Vulnerable 2250	

● The very nature of these extra services prohibit including them in this booklet. To remove sections would disfigure it and more durable paper is desirable too. We would like to send you two successive Radio Menus, an Auto Radio Log, and two copies of the bridge score—one for your pocket and one on gummed paper for your table top or card box. You'll find the Menus very helpful and if you have no need for the others, they will delight some of your neighbors. No letter is required, print your name on a piece of paper, enclose a dime to cover postage and handling and send to Haynes' Radio Log, 161 West Harrison St., Chicago.



The number of municipalities equipped with Police transmitters has more than doubled recently. Their efficiency in battles against crime is unquestioned. A short wave radio or an adapter to a regular radio is necessary to tune in Police Calls. To those who are not equipped to hear, a study of the above map will be both interesting and instructive. Note that often groups of cities share the same frequency within a reasonable reception area, which increases and dove-tails their effectiveness. Police cars in surrounding towns are all tuned in and often are directed by their own headquarters through the facilities of the nearest city.

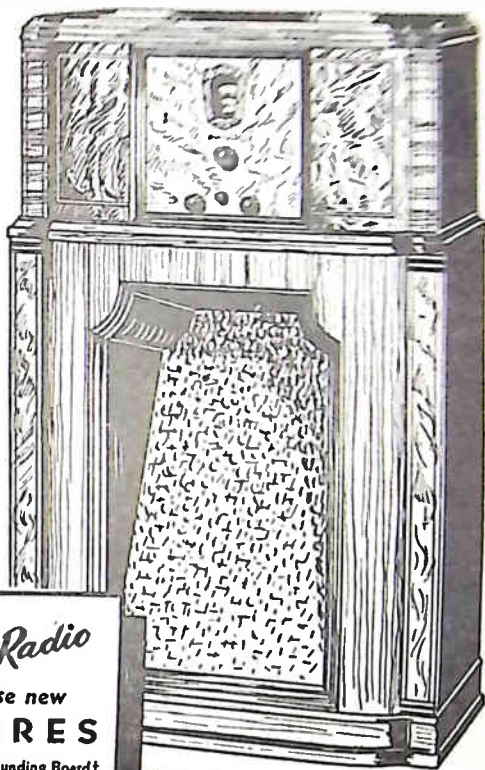
Magnificent New 1934

PHILCO

... enables you to seek out
FOREIGN STATIONS!

Enjoy world-wide reception with the new PHILCO 16. Listen to the truest and most perfect reproduction of American, Canadian, Cuban and Mexican stations. Then go adventuring in the fascinating realm of the short waves—perhaps experience the thrill of picking up Rome, London, Paris, Berlin or Buenos Aires, and even the ultra-short wave British Empire Station broadcasts. Also police and airplane calls, amateur and marine communications.

The new PHILCOS are the finest radios ever designed, providing glorious tone and unexcelled performance! Let us give you a demonstration!



The Only Radio

with all these new

FEATURES

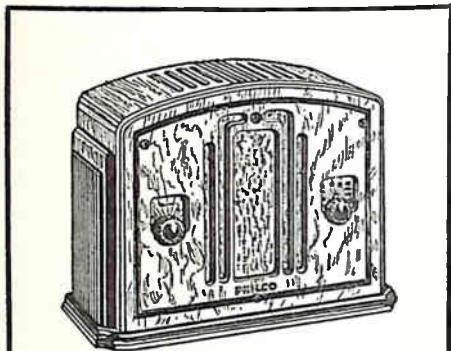
- Patented Inclined Sounding Board†
- New Auditorium Speaker†
- Balanced Power "Class A" Audio System
- Bass Compensating Tone Control
- Patented Full-Floating Chassis
- Automatic Inter-Station Noise Suppression
- Shadow Tuning
- Illuminated Station Recording Dial
- Automatic Volume Control
- PHILCO High-Efficiency Tubes
- Exquisite Hand-Rubbed Cabinets

(Except in Baby Grand)

PHILCO 16X

Provides reception as if the artists were "present in person." Magnificent cabinet of costly woods.

The powerful and versatile 16 chassis is also available in the beautiful remote control model—the 16RX. Also in the new 16 Lowboy and 16 Baby Grand.



PHILCO 54C

The first small set built to meet Underwriters' Safety Standards. Automatic Volume Control, Electro-Dynamic Speaker, Illuminated Dial. Operates on both AC and DC. Gets police and airplane calls in addition to your favorite programs. Built-in aerial—no ground required. Hand-rubbed walnut cabinet.

See all the new PHILCOS at our store. A wide selection of smart new Highboys, Lowboys, Baby Grands, "X" models and Remote Control receivers, DC models and Battery-Operated sets—AT ALL PRICES!

EASIEST PAYMENTS

Liberal Trade-In Allowances

HEAR

Boake Carter, Philco's news commentator, Mondays to Fridays, 7:45 P.M., E.S.T., over Key Columbia Stations.

PHILCO—A Musical Instrument of Quality

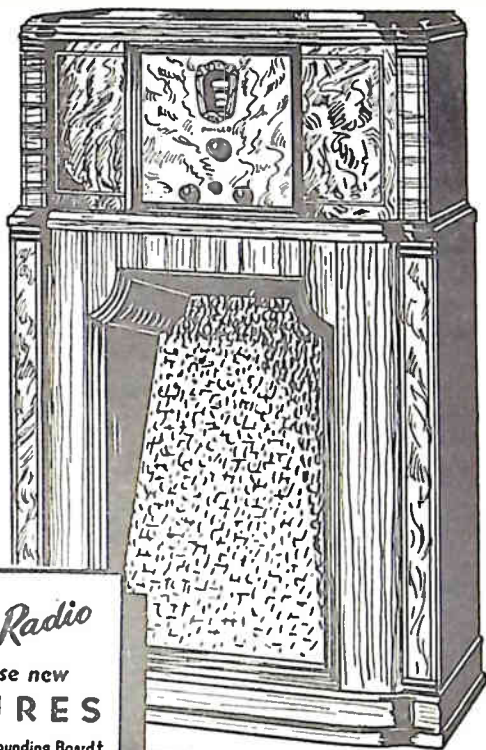
Magnificent New 1934

PHILCO

... enables you to seek out
FOREIGN STATIONS!

Enjoy world-wide reception with the new PHILCO 16. Listen to the truest and most perfect reproduction of American, Canadian, Cuban and Mexican stations. Then go adventuring in the fascinating realm of the short waves—perhaps experience the thrill of picking up Rome, London, Paris, Berlin or Buenos Aires, and even the ultra-short wave British Empire Station broadcasts. Also police and airplane calls, amateur and marine communications.

The new PHILCOS are the finest radios ever designed, providing glorious tone and unexcelled performance! Let us give you a demonstration!



PHILCO 16X

Provides reception as if the artists were "present in person." Magnificent cabinet of costly woods.

The powerful and versatile 16 chassis is also available in the beautiful remote control model—the 16RX. Also in the new 16 Lowboy and 16 Baby Grand.

The Only Radio

with all these new

FEATURES

- Patented Inclined Sounding Board†
- New Auditorium Speaker†
- Balanced Power "Class A" Audio System
- Bass Compensating Tone Control
- Patented Full-Floating Chassis
- Automatic Inter-Station Noise Suppression
- Shadow Tuning
- Illuminated Station Recording Dial
- Automatic Volume Control
- PHILCO High-Efficiency Tubes
- Exquisite Hand-Rubbed Cabinets

†Except in Baby Grand

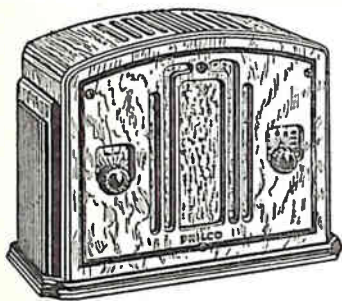
See all the new PHILCOS at our store. A wide selection of smart new Highboys, Lowboys, Baby Grands, "X" models and Remote Control receivers, DC models and Battery-Operated sets—AT ALL PRICES!

EASIEST PAYMENTS

Liberal Trade-In Allowances

HEAR

Boake Carter, Philco's news commentator, Mondays to Fridays, 7:45 P.M., E.S.T., over Key Columbia Stations.



PHILCO 54C

The first small set built to meet Underwriters' Safety Standards. Automatic Volume Control, Electro-Dynamic Speaker, Illuminated Dial. Operates on both AC and DC. Gets police and airplane calls in addition to your favorite programs. Built-in aerial—no ground required. Hand-rubbed walnut cabinet.

PHILCO—A Musical Instrument of Quality

A FRIENDLY TIP FROM THE PUBLISHER

Do not blame the broadcaster or the Government for poor reception if your set has been in operation for a year or more without having been checked by an expert, or if you have neglected to have your tubes tested recently. It is estimated that more than half of the radio sets in this country are improperly installed.

Your local dealer's charge for returning your set to its original efficiency is small. So small, in fact, that he cannot bring the important matter of service to your attention profitably. Why don't you take the initiative? Phone him and allow him to look over your set, test your tubes and check over your entire installation.

A modern radio, under normal conditions at night should tune in most of the stations with power of S, T, U, V and W. In the chart section of this log, their required settings are immediately apparent. If you fail to hear most of them, have your tubes tested. You will find it interesting to watch the process of testing on the new devices which disclose the nature of any defects on the meters before your eyes.

KABC	San Antonio, Tex 1420 M	KFWB	Los Angeles, Cal 950 O	KHQ	Spokane, Was 590 Q	KQW	San Jose, Cal 1010 M
KALE	Portland, Ore 1300 M	KFXD	Nampa, Idaho 1200 M	KICA	Clovis, N.M. 1370 H	KRE	Berkeley, Cal 1370 H
KARK	Little Rock, Ark 890 M	KFXF	Denver, Col 920 M	KICK	Carter Lake, Ia 1420 H	KREG	Santa Ana, Cal 1500 H
KASA	Little City, Okla 1210 H	KFXJ	Grand Junction, Colo 1200 H	KID	Idaho Falls, Ida 1320 M	KRGV	Hartlingen, Tex 1260 M
KBPS	Portland, Ore 1210 H	KFXM	San Bernardino, 1210 H	KIDO	Boise, Ida 1350 O	KRHD	Los Angeles, Cal 1220 M
KBMT	Parkburg, Ark 1200 H	KFXR	Oklahoma City, Okla 1310 H	KIDW	Lamar, Col 1420 H	KRII	Dallas, Tex 1040 T
KCMC	Parkanna, Ark 1420 H	KFYR	Lubbock, Tex 1310 H	KIEM	Eureka, Cal 1210 H	KRLD	Shreveport, La 1330 H
KCRC	Build, Okla 1370 K	KFYR	Bismarck, N.D. 550 O	KIEV	Glendale, Cal 850 S	KROW	Okland, Cal 930 O
KCRJ	Jerome, Ariz 1310 H	KGA	Spokane, Was 1470 S	KIFH	Juneau, Alaska 1310 H	KRSC	Seattle, Was 1120 H
KDB	Santa Barb, Cal 1500 H	KGAR	Tucson, Ariz 1370 H	KIGY	Lowell, Ariz 1200 H	KSAC	Manhattan, Kan 580 M
KDFN	Casper, Wyo 1440 M	KGB	San Diego, Cal 1330 O	KIT	Yakima, Was 1310 H	KSCJ	St. Paul, Minn 1460 V
KDKA	Pittsburgh, Pa 980 W	KGBU	Ketchikan, Alaska 900 M	KJBS	San Francisco, Cal 1070 H	KSD	St. Louis, Mo 550 M
KDLR	Devils Lake, N.D. 1210 H	KGBX	Springfield, Mo 1310 H	KJR	Seattle, Was 970 S	KSEI	Pocatello, Ida 890 M
KDYL	Salt Lake City, U. 1290 O	KGBZ	York, Neb 930 M	KLCN	Blytheville, 1 Ark 200 H	KSL	Salt Lake City, U. 1370 W
KECA	Los Angeles, Cal 1430 O	KGCA	Decorah, Iowa 1270 H	KLO	Orden, Utah 1400 M	KSO	Des Moines, Ia 1370 K
KELW	Burbank, Cal 780 M	KGCR	Watertown, S.D. 1210 H	KLPM	Minot, N.D. 1240 K	K500	St. Paul, Minn 1460 V
KERN	Bakersfield, Cal 1200 M	KGD	Minidapa, Mont 1310 H	KLRA	Little Rock, Ark 1390 S	KSTP	San Francisco, Cal 560 O
KEX	Portland, Ore 1180 S	KGDC	Wolf Point, Mont 1310 K	KLUF	Galveston, Tex 1370 H	KTAR	Phoenix, Ariz 620 M
KFBAB	Lincoln, Neb 770 S	KGDE	Fergus Falls, Minn 1200 H	KLX	Oakland, Cal 880 O	KTAT	Ft. Worth, Tex 1240 O
KFCAC	Los Angeles, Cal 1300 O	KGDM	Stockton, Cal 1100 K	KLZ	Denver, Col 560 O	KTBS	Shreveport, La 1450 O
KFB	Great Falls, Mont 1288 O	KGDY	Huron, S.D. 1340 K	KMA	Shenandoah, Ia 930 M	KTFI	Twin Falls, Ida 1240 M
KFBI	Ableno, Kas 1050 S	KGEE	Yuma, Cal 1200 H	KMAC	Kansas City, Mo 950 S	KTHS	Hot Springs, Ark 1040 T
KFBK	Sacramento, Cal 1310 H	KGER	Long Beach, Cal 1360 O	KMB	Kansas City, Mo 950 S	KTM	Los Angeles, Cal 780 O
KFBL	Everett, Was 1370 F	KGEZ	Kalspell, Mont 1310 H	KMED	Medford, Ore 1310 H	KTRH	Houston, Tex 1120 O
KFDY	Beaumont, Tex 560 M	KGGF	Alva, Okla 1420 H	KMJ	Fresno, Cal 580 M	KTRH	San Antonio, Tex 1290 O
KFDM	Brookings, S.D. 550 O	KGGG	Oklahoma City, Okla 1370 H	KMLB	Monroe, La 1200 H	KTSM	El Paso, Tex 1310 H
KFEL	Denver, Col 920 M	KGGI	Cor. Christi, Tex 1500 K	KMMJ	Clay Center, Neb 740 O	KTW	Seattle, Was 1220 O
KFEQ	St. Joseph, Mo 880 R	KGGJ	Los Angeles, Cal 1200 H	KMO	Tucoma, Was 1330 K	KUJ	Walla Walla, Was 1370 H
KFGQ	Boono, Iowa 1310 H	KGGK	Moorehead, Minn 1500 H	KMOX	St. Louis, Mo 1090 W	KUMR	Yuma, Ariz 1420 H
KFGW	Wichita, Kan 1300 O	KGGM	Roswell, N.M. 1370 H	KMPC	Beverly Hills, Cal 710 M	KUOA	Fayetteville, Ariz 1260 O
KFI	Los Angeles, Cal 640 W	KGGN	Ravenna, Neb 1310 H	KMTR	Los Angeles, Cal 570 M	KUSO	Vermillion, S.D. 890 M
KFIO	Spokane, Was 1120 H	KGGP	Pierre, S.D. 630 J				

KFIZ	Fond du Lac, Wis 1420 H	KGGC	San Francisco, Cal 1420 H	KNDW	Austin, Tex 1500 H	KVI	Tacoma, Was 570 M
KFJB	Marshalltown, Ia 1200 H	KGGF	Coffeyville, Kan 1010 M	KNX	Los Angeles, Cal 1050 V	KVL	Seattle, Was 1370 H
KFJI	Klamath Falls, Ore 1210 H	KGGM	Albuquerque, N.M. 1230 M	KOA	Denver, Col 830 W	KVOA	Tucson, Ariz 1260 M
KFJM	Gd. Forks, N.D. 1370 M	KGGH	Publico, Cal 1320 K	KOAC	Corvallis, Ore 550 O	KVOO	Tulsa, Okla 1140 V
KFJR	Portland, Ore 1300 M	KGGI	Little Rock, Ark 1200 H	KOB	Albuquerque, N.M. 1180 T	KVOR	Colorado Springs, Colo 1270 O
KFJZ	Ft. Worth, Tex 1370 M	KGHL	Billings, Mont 950 O	KOCW	Chickasha, Okla 140 H	KVVC	Bellingham, Was 1200 H
KFKA	Greely, Colo 880 O	KGHR	Butte, Mont 1350 M	KOD	Keosauqua, Mo 1380 M	KWGR	Wichita, Kan 1200 H
KFKU	Lawrence, Kan 1210 H	KGHS	Franklin, Cal 1420 H	KOIL	Council Bluffs, Ia 1260 O	KWEA	Shreveport, La 1210 H
KFLV	Rockford, Ill 1140 M	KGIX	Las Vegas, Nev 1420 H	KOIN	Portland, Ore 940 O	KWFW	Hilo, T.H. 1210 H
KFN	Shenandoah, Ia 890 M	KGIZ	Grant City, Mo 560 M	KOL	Seattle, Was 1270 O	KWG	Stockton, Cal 1200 H
KFOR	Lincoln, Neb 1210 K	KGKB	Tyler, Tex 1500 H	KOMA	Oklahoma City, Okla 1480 S	KWJJ	Portland, Ore 1060 M
KFOX	Long Beach, Cal 1250 O	KGKL	San Angelo, Tex 1370 H	KOMO	Seattle, Was 920 O	KWK	St. Louis, Mo 1350 O
KFPL	Dublin, Tex 1310 H	KGKD	Wichita Falls, Tex 570 H	KONO	San Antonio, Tex 1400 H	KWKC	Kansas City, Mo 780 O
KFRM	Greenville, Tex 1210 H	KGKE	Scotts Bluff, Neb 1500 H	KOOS	Marshfield, Ore 1370 H	KWKH	Shreveport, La 850 T
KFW	Ft. Smith, Ark 1210 H	KGMB	Honolulu, T.H. 1320 K	KORE	Eugene, Ore 1420 H	KWJ	Decorah, Ia 1270 H
KFPY	Spokane, Was 1340 O	KGNE	No. Platte, Neb 1430 M	KOY	Phoenix, Ariz 1390 M	KWSC	Pullman, Was 1220 O
KFQD	Anchorage, Alaska 00 K	KGNF	Dodge City, Kas 1340 K	KPCB	Seattle, Was 650 H	KWWG	Brownsville, Tex 1260 M
KFR	San Francisco, Cal 610 O	KGO	San Francisco, Cal 790 T	KPJM	Prescott, Ariz 1500 W	KXA	Seattle, Was 760 M
KFRU	Columbia, Mo 630 M	KGRS	Amarillo, Tex 1410 O	KPO	San Francisco, Cal 680 W	KXL	Portland, Ore 1420 W
KFS	San Diego, Cal 600 O	KGT	Honolulu, Hawaii 750 R	KPOF	Denver, Col 880 M	KXO	El Centro, Cal 1500 H
KFSG	Los Angeles, Cal 1120 M	KGV	Missoula, Mont 1200 H	KPPC	Pasadena, Cal 1210 F	KXRO	Aberdeen, Was 1310 H
KFU	St. Louis, Mo 550 M	KGVO	Portland, Ore 620 O	KPSC	Wenatchee, Was 1500 H	KXYZ	Houston, Tex 1440 K
KFV	Los Angeles, Cal 1000 K	KGY	Olympia, Was 1210 H	KPRC	Houston, Tex 920 O	KYA	San Francisco, Cal 1230 O
KFVS	C. Girardeau, Mo 1210 H	KHJ	Los Angeles, Cal 900 D	KQV	Pittsburgh, Pa 1380 M	KYW	Chicago, Ill 1020 T
						NAA	Arlington, Va 630 O

CANADIAN, CUBAN AND MEXICAN

CFAC	Calgary, Alta 690 M	CHWK	Chilliwack, B.C. 780 H	CKPC	Preston, Ont 930 H	HHK	Portau Prince, Haiti 920 O
CFBO	St. John, N.B. 1030 M	CJCA	Edmonton, Alta 750 M	KPR	Port Arthur, Ont 780 H	XEAF	Tijuana, Mex 980 Q
CFCA	Toronto, Ont 600 M	CJCB	Calgary, Alta 690 M	CKUA	Edmonton, Alta 580 M	XEAN	Juarez, Mex 750 S
CFCF	Quebec, Que 600 M	CJGX	Yorkton, Sask 630 M	CKX	Brandon, Man 930 M	XEAW	Reynosa, Mex 965 T
CFCH	North Bay, Ont 930 H	CJOC	Lethbridge, Alta 580 H	CKY	Winnipeg, Man 910 S	XEB	Mexico City, Mex 8030 T
CFCH	Calgary, Alta 1030 T	CJOR	Vancouver, B.C. 1210 M	CRCA	Moncton, N.B. 580 M	XEFD	Tijuana, Mex 855 R
CFCO	Chatham, Ont 1210 H	CJRM	Moose Jaw, Sask 880 M	CRCD	Ottawa, Ont 880 M	XEF	Mexico City, Mex 940 S
CFCY	Charlottetown, PEI 630 M	CJRW	Fleming, Sask 850 M	CRCT	Toronto, Ont 840 S	XEM	Juarez, Mex 1015 H
CFJC	Kamloops, B.C. 1120 H	CKCD	Vancouver, B.C. 1010 H	CRCV	Vancouver, B.C. 1100 M	XEN	Mexico City, Mex 711 O
CFJC	Fredericton, N.B. 930 H	CKCK	Regina, Sask 1020 M	CMAF	Havana, Cuba 680 O	XENT	New Laredo, Mex 1225 W
CFJC	Saskatoon, Sask 890 M	CKCL	Toronto, Ont 580 H	CMAF	Havana, Cuba 840 M	XEPN	Piedras Negras, Mex 585 W
CFBR	Toronto, Ont 690 T	CKCD	Ottawa, Ont 1010 H	CMQ	Havana, Cuba 780 M	XET	Monterrey, Mex 690 M
CFRC	Kingston, Ont 915 H	CKCR	Waterloo, Ont 645 H	CMY	Havana, Cuba 435 O	XETM	Matamoros, Mex 850 W
CHCK	Charlottetown, PEI 1310 H	CKLW	Windsor, Ont 550 S	CMJK	Camaguey, Cuba 790 O	XETR	Mexico City, Mex 610 O
CHGS	Summerside, PEI 1120 H	CHMC	Cobalt, Ont 1210 H	CMK	Havana, Cuba 730 R	XEW	Mexico City, Mex 910 S
CHLP	Montreal, Que 1120 H	CKMO	Vancouver, B.C. 1410 H	CMQ	Havana, Cuba 630 M	XFG	Mexico City, Mex 638 O
CHMA	Edmonton, Alta 580 K	CKNC	Toronto, Ont 1030 H	CMX	Havana, Cuba 890 M	XFI	Mexico City, Mex 812 O
CHNS	Halifax, N.S. 1050 M	CKOC	Hamilton, Ont 1010 M	CMW	Havana, Cuba 600 P		
CHRC	Quebec, Que 645 H	CKOV	Kelowna, B.C. 1200 H				
CHWC	Regina, Sask 1010 M						

50 75 100 150 200 250 300 500 750 1000 POWER 1500 2000 2500 5000 10000 15000 25000 50000
F G H I J K L M N O CODE P Q R S T U V W

WAAB Boston... Mass 1410 M	WEED Greenville... N.C. 1428 H	WJAY Cleveland... Ohio 630 M	WOKO Albany... N.Y. 1430 M
WAAC Chicago... Ill 1280 M	WEEL Boston... Mass 590 O	WJBC LaSalle... Ill 1200 H	WOL Washington, D.C. 1310 H
WAAM Newark... N.J. 1250 R	WEU Reading... Pa 830 O	WJBI Red Bank... N.J. 1210 H	WOMT Manltowood... Wis 1220 H
WAAT Jersey City... N.J. 948 M	WEHC Charlottesville Va 1350 M	WJBK HighlandPk. Mich 1370 H	WOOD Gd Rpd... Mich 1270 M
WAAW Omaha... Neb 660 M	WEHS Chicago... Ill 1420 H	WJBL Des Moines... Ia 1200 H	WOPI Bristol... Tenn 1500 H
WABC Bangor... Me 1200 H	WEIC Del. Clk. Mich 1450 W	WJBO New Orleans, La 1420 H	WOPJ Kansas City, Mo 1300 O
WABI Waco... Tex 1420 H	WENR Americus... Ga 1420 H	WJBU Sunbury... Pa 1210 H	WOR Newark... N.J. 730 W
WACO Waco... Tex 1420 H	WENC Chicago... Ill 870 W	WJBW New Orleans, La 1200 H	WORC Worcester... Mass 1280 H
WAGC Akron... Ohio 1320 O	WESG Elmira... N.Y. 1040 O	WJBY Gadsden... Ala 1210 H	WORK York... Pa 1000 O
WADM Presque Isle... Me 1420 H	WEVD New York... N.Y. 1300 M	WJDX Jackson... Miss 1270 O	WOS Jefferson City, Mo 630 M
WAIU Columbus... Ohio 840 M	WEW St. Louis... Mo 1310 F	WJEL Dayton... Ohio 1200 H	WOW New York... N.Y. 1310 O
WALF Zanesville... Ohio 1220 H	WEJ Royal Oak, Mich 910 F	WJEM Tupelo... Miss 990 O	WOWB Omaha... Neb 590 O
WAMC Ansonia... Ala 1220 H	WEA Dallas... Tex 800 W	WJJD Chicago... Ill 1130 U	WOWD Ft. Wayne... Ind 1160 T
WAML Laurel... Miss 1310 H	WFAB New York... N.Y. 1300 O	WJMS Ironwood... Mich 1420 H	WPAD Paducah... Ky 1420 H
WAPI Birmingham, Ala 1140 W	WFAM South Bend... Ind 1200 H	WJMT Detroit... Mich 750 T	WPAP New York... N.Y. 1010 K
WARD Brooklyn... N.Y. 1400 M	WFAS White Plains N.Y. 1210 H	WJSV Alexandria... Va 1460 T	WPCN New York... N.Y. 570 M
WASH Grand Rapids, Mi 1270 M	WFBC Greenville... S.C. 1200 H	WJTL Atlanta... Ga 1370 H	WPEN Philadelphia... Pa 1500 H
WAWZ New York... N.Y. 1450 W	WFBE Cincinnati... O 1200 H	WJW Akron... Ohio 1210 H	WPFB Hattiesburg, Miss 1370 H
WAZL Hasleton... Pa 1420 H	WFBG Altoona... Pa 1310 H	WJZ New York... N.Y. 720 W	WPGA Atlantic City, N.J. 1300 S
WBAW Lafayette... Ind 1400 M	WFBK Syracuse... N.Y. 1360 O	WKAA San Juan... P.R. 1240 O	WPHR Petersburg... Va 1200 K
WBAA Harrisburg... Pa 1430 O	WFBM Indianapolis... Ind 1230 O	WKAR E. Lansing, Mich 1040 O	WPRO Providence, R.I. 1210 H
WBAL Baltimore (700)... 1060 T	WFBT Baltimore... Md 1270 M	WKBB E. Dubuque... Ill 1500 H	WPTF Raleigh... N.C. 680 S
WBAP Fort Worth... Tex 900 W	WFDF Phila... Mich 1310 H	WKBC Birmingham, Ala. 1310 H	WQAN Miami... Fla 860 O
WBAX Wicks-Barro... Pa 1400 M	WFEE Manchester, N.H. 1430 M	WKBF Indianapolis, Ind. 1400 M	WQAO New York... N.Y. 1010 K
WBBC Bay City... Mich 1410 M	WFFI Philadelphia... Pa 560 M	WKBF Chicago... Ill 1420 H	WQCC Vicksburg... Miss 1360 M
WBBL Richmond... Va 1210 H	WFI Hopkinsville... Ky 940 O	WKBN Youngstown... O 570 M	WQOM St. Albans... Vt 1370 H
WBBM Chicago... Ill 770 V	WFLA Clearwater... Fla 620 O	WKBV Connersville, Ind 1500 H	WQOX Thomasville... Ga 1210 H
WBFR Brooklyn... N.Y. 1300 O	WFDX Brooklyn, N.Y. 1400 M	WKBW Buffalo... N.Y. 1480 S	WRAK Williamsport... Pa 1370 H
WBFX New Orleans, La 1200 H	WFCAL Lancaster... Pa 1310 H	WKBY Ludington, Mich 1500 H	WRAL Wilmington, N.C. 1370 H
WBZZ Ponca City, Okla 1200 H	WGCAR Cleveland... O 1450 M	WKCU La Grange... Ga 1500 H	WRAX Hattiesburg... Miss 1370 H
WBCH Bay City... Mich 1410 M	WGBB Freeport... N.Y. 1210 H	WKFI Greenville... Miss 1210 H	WRAX Philadelphia... Pa 1020 K
WBEN Buffalo... N.Y. 900 O	WGBF Evansville... Ind 630 M	WKJL Lancaster... Pa 1200 H	WRDL Columbus... Ga 1200 H
WBEO Marquette... Mich 1320 H	WGBI Scranton... Pa 880 K	WKRC Cincinnati... Ohio 550 O	WRDX Itonnoka, Va... 1440 K
WBHS Huntsville... Ala 1200 H	WGCAM Gulfport... Miss 1220 H	WKY Okla. City... Ok 1900 O	WRFC Washington, D.C. 950 M
WBIG Greensboro... NC 1440 H	WGCN Newark... N.J. 1250 K	WLAC Nashville... Tenn 1470 S	WRGW Augusta... Mo 1370 H
WBKN New York... N.Y. 1350 M	WGCES New York... N.Y. 1450 W	WLAP Louisville... Ky 1200 K	WRHC Augusta... Ga 1500 H
WBOD New York... N.Y. 1450 W	WGH Newport News, Va 1310 H	WLB Minneapolis, Minn 1250 O	WRHE Lawrence... Kan 1220 O
WBOW Terra Haute... Ind 130 H	WGL Ft. Wayne... Ind 1370 H	WLBK Muncie... Ind 1310 F	WRHM Minneapolis, Minn 1250 O
WBRC Birmingham... Ala 930 O	WGN Chicago... Ill 720 V	WLBK Kan. City... Kan 1420 H	WRJN Racine... Wis 1370 H
WBRE Wilkes-Barre... Pa 1310 M	WGN Chester Twp, N.Y. 1230 F	WLBW Stevens Pt... Pa 1260 O	WRNY New York... N.Y. 1010 K
WBEO Needham... Mass 920 W	WGNT Buffalo... N.Y. 950 O	WLBZ Bangor... Me 620 M	WRPL Knoxville... Tenn 1310 H
WBT Charlotte... N.C. 1080 V	WGST Atlanta... Ga 890 M	WLCL Ithaca... N.Y. 1210 F	WRSL Joliet... Ill 830 S
WBTD Danville... Va 1370 H	WGY Schenectady, N.Y. 790 W	WLEY Lexington, Mass 1370 H	WRUF Gainesville... Fla 280 M
WBZ Springfield... Mass 990 V	WHM Madison... Wis 940 O	WLIT Philadelphia... Pa 560 M	WRVA Richmond... Va 1110 S
WBZA Boston... Mass 990 O	WHAM Milwaukee... Wis 1220 K	WLS Chicago... Ill 870 W	WSAI Cincinnati... O 1330 M
WCAC Storrs... Conn 600 M	WHAM Rochester... N.Y. 1350 V	WLSB Buffalo... N.Y. 1400 M	WSAJ Grove City... Pa 1310 H
WCAD Canton... N.Y. 1220 M	WHB Brookville... Ky 1320 H	WLEU Erie... Pa 1420 H	WSAN Allentown... Pa 1440 K
WCAE Pittsburgh... Pa 1220 O	WHAT Philadelphia... Pa 1310 H	WLVA Lynchburg... Va 1370 H	WSAR Fall River... Mass 1450 K
WCAH Columbus... Ohio 1450 M	WHAZ Troy... N.Y. 1300 M	WLW Cincinnati... O 700 W	WSB Huntington, W. Va 1290 M
WCAL Northfield, Minn 1250 O	WHB Kansas City... Mo 860 H	WLWL New York... N.Y. 1300 S	WSB Atlanta... Ga 740 W
WCAM Camden... N.J. 1280 M	WHBC Canton... Ohio 1200 B	WMAC Syracuse... N.Y. 570 K	WSBC Chicago... Ill 1210 H
WCAO Baltimore... Md 600 K	WHBD Bellefontaine... O 1370 H		WSBT South Bend... Ind 1230 M
WCAP Asbury Park, N.J. 1280 M			
WCAT Rapid City... S.D. 1200 H			

68	75	100	150	200	250	300	500	750	1000	POWER	1500	2000	2500	5000	10000	15000	25000	50000
F	G	H	I	J	K	L	M	N	O	CODE	P	Q	R	S	T	U	V	W

No matter what make of radio you have, or how your dial is numbered, the chart on the first four pages is a point-by-point list of the stations from one end of your dial to the other. Simple, complete, compact, it stands alone in the Radio Log field. Few, if any, radio dials exactly conform with Kilocycle listings. USE YOUR PENCIL in that blank, center column.

THE PRINCIPAL SHORT WAVE STATIONS HEARD IN AMERICA

Megs*	Meters	Call	Location	Time†	Megs*	Meters	Call	Location	Time†
21.55	13.92	W8XK	Pittsburgh, Pa.	7 AM—2 PM	9.51	31.55	GSB	Daventry, England	9:30—11:30 AM; 5:00—7:00 PM
21.52	13.94	GSH	Daventry, England	New—Irregular	8.84	33.95		Ships	
18.83	15.93	PLE	Bandoeng, Java	7:40—9:40 AM Tu.	8.33	36.00		German Ships	
17.79	16.85	GSG	Daventry, England	6—10:30 AM	8.03	37.35	RABAT	Morocco	1:30—4 PM; Sun.
17.78	16.87	W3XAL	Boundbrook, N. J.	12—6:30 PM	7.77	38.47	HBP	Geneva, Switz.	4—4:45 PM; Sun.
17.77	16.88	PHI	Huizen, Holland	7—9 AM Summer	7.30	41.10		Amateur	
17.59	17.05		Ships	Irregular	7.00	42.90		Amateur	
15.33	19.57	W2XAD	Schenectady, N. Y.	1—2 PM M.W.F.	6.62	45.31	PRADO	Riobamba, Ecuador	8—10:30 PM; Thurs
				12—2 PM Su.	6.16	48.80	YV3BC	Caracas, Venez.	4—10 PM
15.27	19.65	W2XE	Wayne, N. J.	Irregular	6.14	48.85	W8XK	Pittsburgh, Pa.	3—11 PM
15.24	19.68	PONTSE	France	7—9 AM	6.12	49.02	W2XE	Wayne, N. J.	4—11 PM
15.21	19.72	W8XK	Pittsburgh, Pa.	8 AM—3 PM	6.11	49.1	YV1BC	Caracas, Venez.	6—9 PM
15.20	19.73	DJB	Zeesen, Germany	7—8:30	6.10	49.18	W3XAL	Boundbrook, N. J.	Irregular
15.15	19.80	GSF	Daventry, England	10:30 P—12:30 A	6.10	49.18	W9XF	Chicago, Illinois	Irregular
				5:00—11:30 AM	6.10	49.20	VE9GW	Toronto, Canada	Irregular
				5—7 PM	6.08	49.34	W9XAA	Chicago, Illinois	10 A—8 P; Su. Irr.
15.12	19.84	HVJ	Vatican City	4—4:15 PM	6.06	49.50	W3XAU	Philadelphia, Pa.	Irregular
14.40	20.83		Amateur		6.05	49.59	GSA	Daventry, England	5—7 PM; Winter
14.00	21.43		Amateur		6.02	49.83	DJC	Zoesen, Germany	6—8 PM; Irr.
13.23	22.68		Ships		6.01	49.96	VE9DR	Montreal, Canada	5 AM—11 PM
13.05	23.00		German Ships		5.80	51.75	HJ4ABE	Medellin, Colombia	7—9 PM
11.91	25.20	PONTSE	France	10:30 A—1:30 P	5.80	51.70	HJ1ABB	Barranquilla, Col.	7—9 PM
11.88	25.25	W8XK	Pittsburgh, Pa.	3—9 PM	5.76	52.70		Airports	
11.86	25.30	GSE	Daventry, England	2:30 A—11:30 P Irr.	4.28	70.10	RV15	Khabarovsk, Rus.	2—8 AM; Irr. Win.
11.83	25.36	W2XE	Wayne, N. J.	1—3 PM	4.18	71.82		Ships	
11.81	25.40	I2RO	Rome, Italy	10:00—11:00 AM	4.00	75.00		Amateur	
				1:30—4:30 PM	3.50	85.70		Amateur	
11.80	25.42	W1XAL	Boston, Mass.	Irregular	3.14	95.40		Airports	
11.76	25.51	DJD	Zeesen, Germany	8 AM—7 PM; Irr.					
11.75	25.53	GSD	Daventry, England	12—4:30 PM; Irr.					
11.73	25.57	PHI	Huizen, Holland	8—10 AM; Winter					
11.72	25.60	VE9JR	Winnipeg, Man.	8 A—9 P; Tues.					
11.72	25.60	PONTSE	France	2—4; 5—7:30 P Irr.					
9.87	30.40	EAQ	Madrid, Spain	4:30—6 PM; Daily Noon—2 PM; Sat.					
9.67	31.00	T14NRH	Heredia, C. R.	10—11 PM					
9.60	31.25	XETE	Mexico City	5—11 PM					
9.59	31.27	CTIAA	Lisbon, Portugal	3:40—6 PM Tu & Fri					
9.59	31.28	HBL	Geneva, Switz.	4—4:45 PM; Sat.					
9.59	31.28	VK2ME	Sydney, Aust.	11 PM—1 AM; Sun 3:30—11:30 AM					
9.57	31.35	W1XAZ	Springfield, Mass.	Irregular					
9.56	31.38	DJA	Zeesen, Germany	3—9 PM; Irr.					
9.53	31.48	W2XAF	Schenectady, N. Y.	5—11 PM					
9.51	31.55	VK3ME	Melbourne, Aust.	4—5:30 AM; Wed. 4—6 AM; Sat.					

SHORT WAVE TUNING IS DIFFERENT

Do not expect to hear short wave radio stations from all over the world at any time the receiver is turned on. Tune systematically. Refer to the short wave station log and try for those stations that are operating at the time you are tuning. Simply because a station is on the air, do not assume that it should necessarily be heard in your location. A station may be heard on schedule one day and not the next. Tune slowly and carefully. Tune below 26 metres during the day, between 26 and 33 metres, early evening and from 33 to 52 metres at night. Very few foreign stations are heard above 52 metres. Do not expect best results between midnight and 4:00 or 5:00 A.M. These suggestions are offered as practical tips on tuning. There are always possible exceptions to the rule. To convert megacycles to kilocycles change the period to a comma and add a cipher. Every short wave listener has urgent need for a time converter. It must be of a sliding scale nature to be speedy and accurate, and require no calculations. The best to our knowledge is unique, strong and simple. Sold on a money back guarantee for \$1.00 by the designer, W. H. Reeks, 5941 No. Rockwell St., Chicago.

*A megacycle is 1,000 kilocycles. †Central Standard Time.

ENJOY IMPROVED RECEPTION

with the *NEW*

PHILCO HIGH-EFFICIENCY *Tubes*

Put your radio in the finest condition to get all the big programs on the air. Replace your old, worn-out tubes with the remarkable new PHILCO High-Efficiency Tubes which improve the performance of ANY radio! You will be amazed at the small cost of a complete new set of these tubes—and equally surprised at the added enjoyment they will provide.



PHILCO HIGH-EFFICIENCY TUBES
are more compact, more efficient and
consume less current

TUBES TESTED FREE!

Bring in your old tubes—we'll test them for you **FREE** on our accurate tube tester.

Printed in U.S.A.