

THE NEW WORLD OF RADIO ENTERTAINMENT



In This Issue

**HOW TO GET
OVERSEAS STATIONS**



**30 MOST POPULAR
FOREIGN STATIONS**



**INTERESTING FACTS
ABOUT WORLD-WIDE
STATIONS**

Simplified
**WORLD-WIDE
RADIO LOG**

5¢

How these eminent people keep in touch with the NEW WORLD of EVENTS, POLITICS and MUSIC

“The new Stewart-Warner Magic Dial Radio brings me, from every corner of the earth, not only the cultural advantages of good music and intelligent entertainment — but vitally important information on the trend of international politics and world events. With the new Stewart-Warner All-Wave Radio, you can actually have a ‘ringside seat’ at any one of the greatest battles in world history — for a price that any modern home can and should afford.”

Says

**WALTER
B. PITKIN**

*Noted Professor
and Author of
“Life Begins at
Forty” and
Other Books*



M. GEORGES BUROSSE

*Commandant of the Great French Lines
(On board his flagship, “Ile de France”)*

“As master of a great ocean liner, I have a wide range of interests. I must be up-to-date on current events. So it is natural that I am intensely enthusiastic about the new Stewart-Warner Radio with the Magic Dial. At a simple touch of the hand, my Stewart-Warner brings me the best programs. With it I keep in intimate touch with the world at both ends of my voyage — Europe and America.”

ERNO RAPEÉ

*Director of Music
Radio City Music Hall — New York*

“I have made it an essential part of my daily program to tune in Paris, London, Rome, Madrid, Prague, Vienna and the South American capitals of culture. I listen as often as I can to broadcasts from abroad in order to keep our productions at the Music Hall up-to-the-minute in modernity and authentic in color. A turn of the Magic Dial on the new Stewart-Warner All-Wave Radio, and the music of the world floods my study — affording me priceless entertainment and fresh ideas for my work.”



The Fascinating NEW WORLD of RADIO ENTERTAINMENT

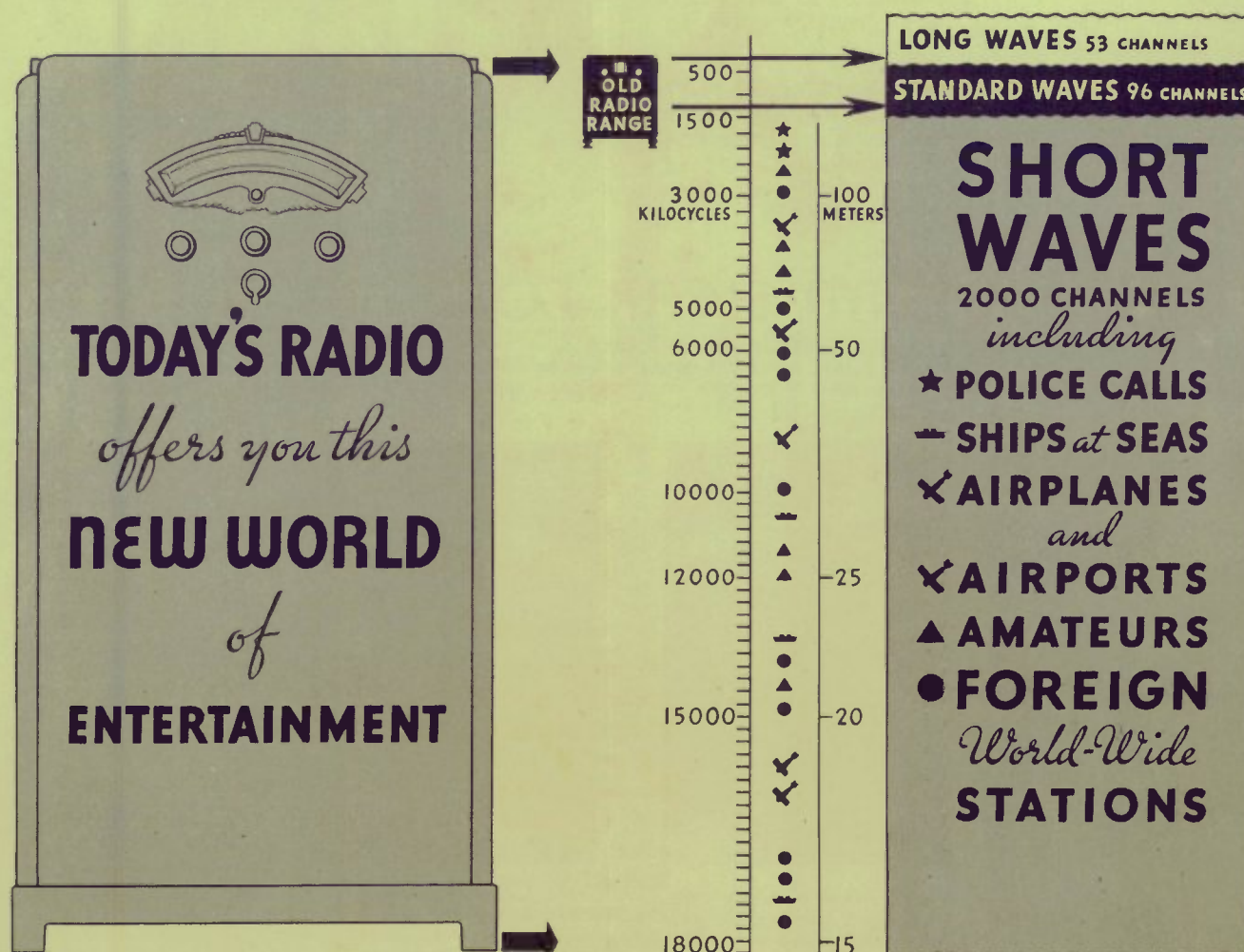
Mystery, Romance, Adventure and Thrills Aplenty to Be Found in New Greater Field Opened Up by Short Wave Radio

Today, radio broadcasting is done over three types of waves, commonly referred to as Long Waves, Standard Waves, and Short Waves. The relative breadth of these wave bands is clearly illustrated in the chart below. The so-called Long Wave Band is restricted to governmental and commercial transmission — almost entirely in code — and is of no interest to the average listener. The Standard Wave Band makes available the broadcasts with which everyone is familiar. Until now, the reception of the average radio set was *confined* to this band.

But, now, radio developments have opened up a new and greater field of entertainment — the Short Wave Band, heretofore *below* the range of an

ordinary radio set. This band — twenty times larger than the Standard Wave Band — makes available radio's latest, greatest thrill. Short Waves bring you Police Calls from cities throughout the country, conversations between Airplanes and Airports, programs from ships at sea, and the supreme thrill of direct broadcasts from over 200 Foreign Stations located throughout the world.

The radio of yesterday made available broadcasts in the Standard Wave Band only. The radio of today brings you this marvelous entertainment, from far greater distances and with far better tone, **PLUS** the fascinating **NEW WORLD** of RADIO ENTERTAINMENT to be found in the Short Wave Band.



HOW TO GET OVERSEAS STATIONS

Ever Hear a Broadcast Direct from Europe? Here's What It Takes . . . and Why It Is Possible

Today, hearing direct broadcasts from Foreign Stations throughout the world is no longer a myth. It's an everyday occurrence — made possible by two things:

First, the perfection of simplified world-wide radio sets making it possible for the average listener to tune-in on the short waves over which Foreign Stations broadcast their programs.

Second, the development of better overseas stations, far more powerful and with new directional aerials especially designed to broadcast entertaining programs to the United States and Canada, and to far flung colonial possessions.

Today, the whole world is at your command for merely the price of a good All-Wave radio set, which receives short wave as well as standard wave broadcasts. Now, practically all leading radio manufacturers offer such sets, so you have plenty to choose from. But, select your Round-the-World Radio carefully. Favor the manufacturer with the most experience. Then, have installed in your home a good short wave aerial, one especially suited to your individual location.

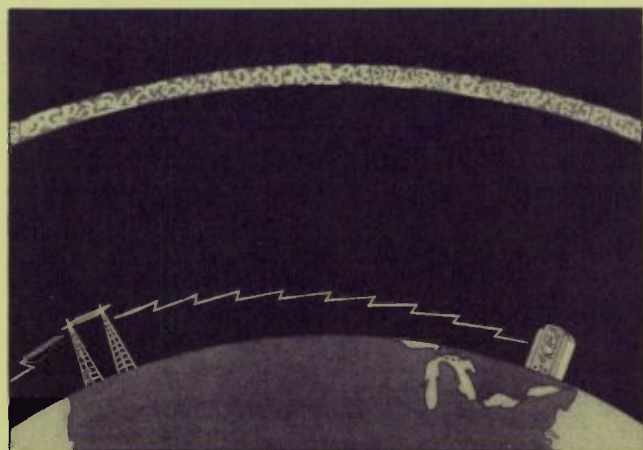
In this magazine you will find a listing of the most frequently heard overseas stations, and the hours each is on the air. Supplement this information with that to be found in the leading short wave radio magazines, because changes in Foreign Sta-

tion broadcasts may occur frequently. Especially recommended is the magazine published monthly by the International Short Wave Club, of East Liverpool, Ohio. Subscription only \$1.00 per year. Keeping constantly posted on short wave broadcasts will lead to a greater enjoyment of your Round-the-World Radio.

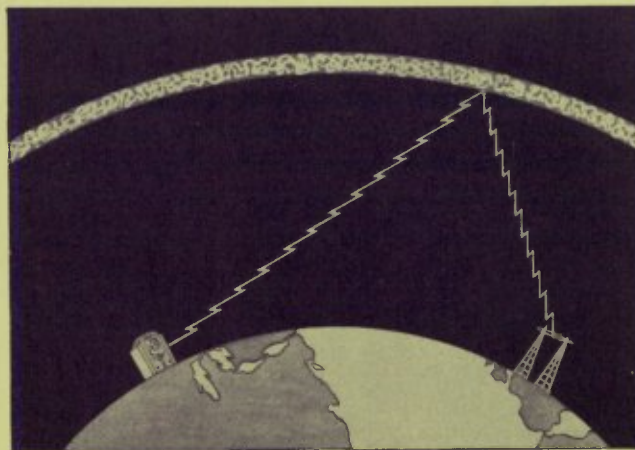


WHY YOU CAN HEAR FOREIGN STATIONS

Programs from overseas stations are broadcast on short waves, because short waves travel such great distances. The reason for this is clearly shown in the following charts, illustrating the difference between the travel of standard wave broadcasts with which you are familiar, as compared to broadcasts sent out over short waves.



Standard wave broadcasts follow the curvature of the earth and travel direct from the sending station to the radio in your home. The earth continuously absorbs these waves until, after they have reached a certain point, their strength is entirely dissipated.



Short wave broadcasts sweep upward until they strike an atmospheric layer, about 150 miles high, and are then deflected toward the earth. Thus avoiding the earth's weakening influences, short waves retain their initial strength and travel great distances.

GSD LONDON ENGLAND

11.75 Megacycles - - 25.53 Meters
HEARD THE WORLD OVER

Programs from this popular station, broadcast to the far flung units of Britain's mighty empire, emanate from the studios of the British Broadcasting Corporation, London. The type of music and the variety of program are comparable to that you might hear over an American chain station.

Eight transmitters are used — GSA, GSB, GSC, GSD, GSE, GSF, GSG and GSH — two of them being employed simultaneously on each broadcast to insure the best possible reception. If you cannot receive the program so well on one of the wave lengths, you can generally tune it in on the other.

Broadcasts from this chain of stations are directed daily to the five Empire zones — Australian, Indian, African, West African and Canadian. Listening to these broadcasts, one can capture much of the very atmosphere of London such as, for instance, hearing the striking of Big Ben and the Westminster Chimes as clearly as though he were walking down the Strand or crossing the famous Waterloo Bridge.

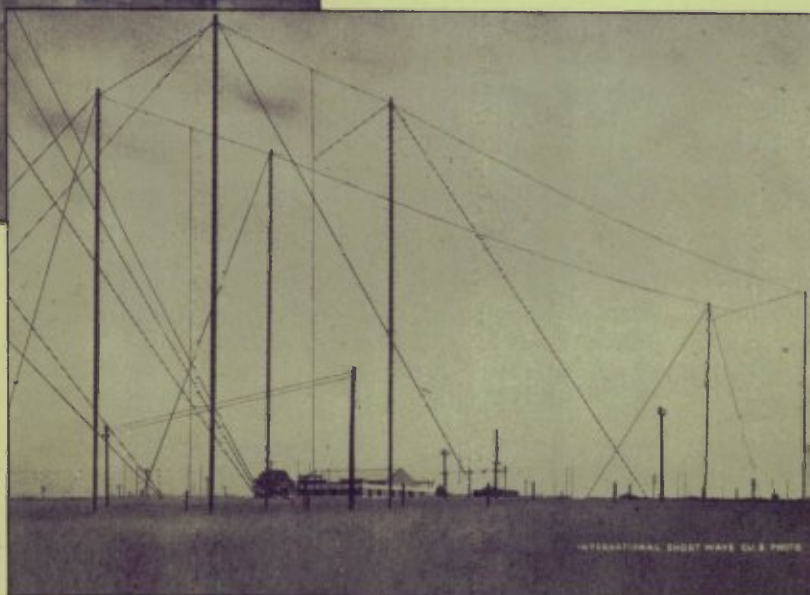


Big Ben, the chimes from which close the programs broadcast from England, is one of the historical landmarks of London. Built in 1858, it is still reputed to be the most powerful striking clock in the world. The bell weighs $13\frac{1}{2}$ tons, the hammer 400 pounds. Its hour hand measures 9 feet long, and its minute hand 14 feet.



Above: The Control Room of the stations at Daventry, England, operated by the British Broadcasting Corporation.

At Right: Studios are in London, but the transmitting plant of these stations is located in Daventry. Here, eighteen immense aerials, including five groups of directional aerials, direct the London broadcasts to the vast British Empire.



PARIS and FRANCE

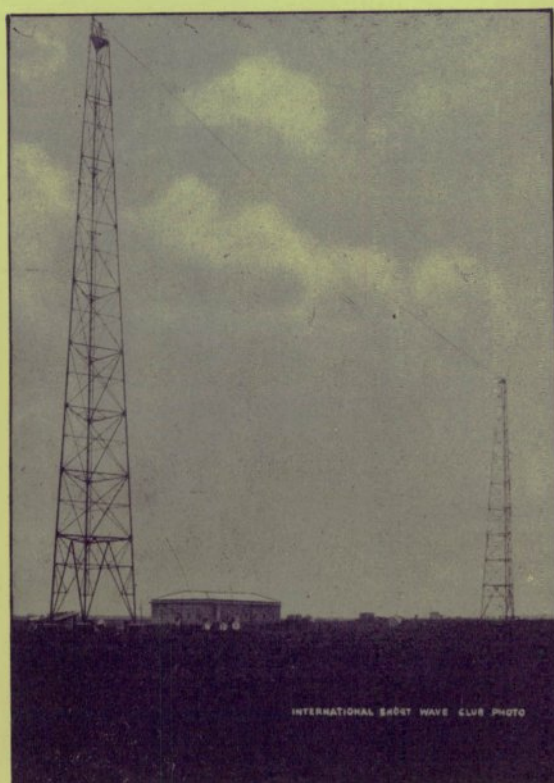
will probably be among the first objectives of your world tours via radio. Here is pictured the Arc de Triomphe in Paris, the city famed for its festivity and entertainment.



FYA PARIS FRANCE

15.24 Megacycles - - 19.68 Meters

"Hallo, hallo, ici c'est Radio Coloniale," says the announcer and you know you are listening to FYA, the most familiar French station, located in Pontoise. Its daily broadcasts offer a variety of entertaining music, interspersed with news announcements generally given in English.



INTERNATIONAL SHORT WAVE CLUB PHOTO

I2RO ROME ITALY

11.81 Megacycles - - 25.40 Meters

A popular, mellow-voiced signora announces this station as "Radio Roma-Napoli." Most of the programs emanate from the studios in Rome, but some are also picked up from Naples and other cities throughout Italy.

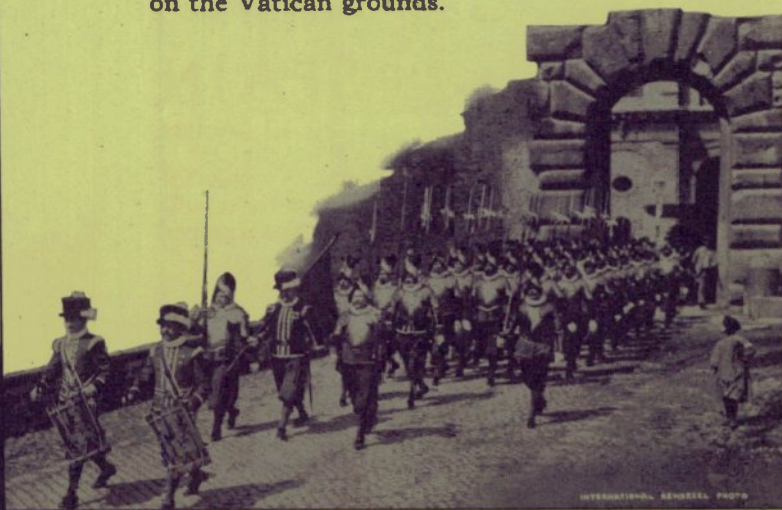
HVJ VATICAN CITY

15.11 Megacycles - - 19.84 Meters

When touring Italy via radio you can also tune in the special programs broadcast daily from Station HVJ, located in Vatican City.

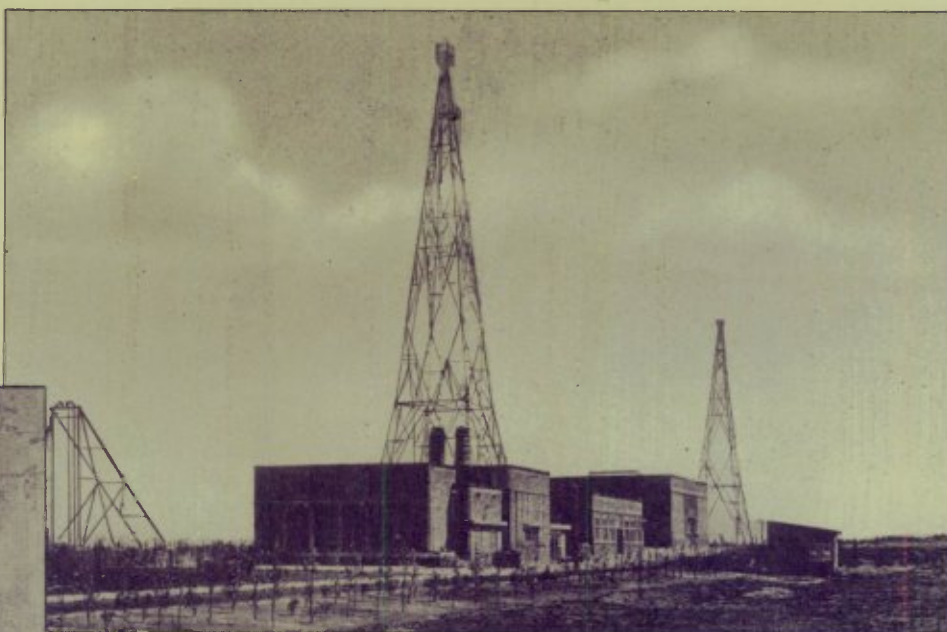
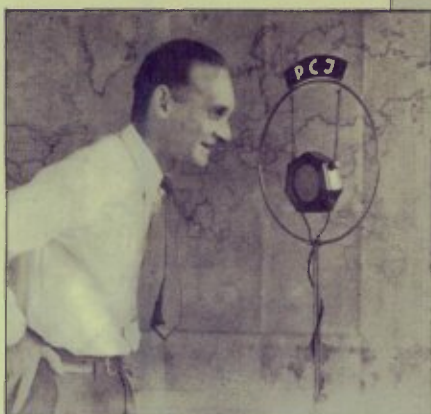
Left: The transmitting station and immense aerials for Station I2RO are located just outside Rome.

Below: With uniforms and equipment of centuries past, the Swiss Guard presents an interesting spectacle, as it passes beneath one of the ancient portals on the Vatican grounds.



INTERNATIONAL RENAISSANCE PHOTO

Below: Edward Startz, the famous and accomplished announcer, identifies Station PHI for local and world listeners. To make certain his call letters are clearly understood, this silver-tongued linguist repeats announcements in seven different languages — Dutch, Malay, English, French, German and Portuguese.



Programs from Station PHI are broadcast to the world from this transmitting plant, located in Huizen, Holland. Studios are maintained in Hilversum. This station is on the air Monday, Thursday and Friday from 7:30 to 9:30 A.M. and on Saturdays and Sundays from 7:30 to 11:00 A.M. (E.S.T.).

DJB BERLIN GERMANY

15.20 Megacycles - - 19.73 Meters

"GERMAN ROUND THE WORLD SENDER"

is the name given to this station by its operators the German Broadcasting Company. Opened with a cheery "Hello, America, we hope you have good reception tonight," programs from this station bring to U. S. radio listeners gems of classical music and song. Broadcasting is done from early morning until late at night, two transmitters being used on each program to insure best possible reception. Announcements are made in three languages — first German, then English, then Spanish. Call letters used are DJA, DJB, DJC, DJD. Studios are in Berlin, the transmitting plant being located in Zeesen, Germany.

EAQ MADRID SPAIN

9.86 Megacycles - - 30.40 Meters

The daily broadcasts from this station are colorful and entertaining, and your enjoyment of them will be further increased by the fact that announcements are made in English as well as Spanish.

The programs, broadcast from approximately 5 to 7 P.M. (E.S.T.), offer music, literature and news. The Saturday broadcasts, noon to 2 P.M., are intended primarily for Europe, Canary Islands and other Spanish possessions. On stated evenings each week, one hour of the broadcast is devoted to the International Broadcast Club of London, an organization established for creating good will and a closer relationship among the radio listeners of the world.

PHI HUIZEN HOLLAND

11.73 Megacycles - - 25.57 Meters

The land of dikes and windmills and famous old cities is an interesting one to visit via radio. PHI is not only an outstanding station in Holland, but the world over. Through this station, Holland keeps in touch with her colonial possessions in Dutch East and West Indies. During the summer months, PHI leaves its regular wave band of 11.73 megacycles and broadcasts over 17.77 megacycles.



Station J1AA, Kemikawa-Cho, Kiba-Chen, Japan

sends listeners a program verification card on the front of which is a picture of the station. Broadcasts from Japan are received daily in the U. S. from approximately 5:00 to 7:00 A.M. (E.S.T.).

Below: The front of the card which YV3BC sends to listeners, upon request, to verify receipt of programs. When writing this station, address YV3BC, Radiodifusora Venezuela, Caracas.



Above: This orchestra is typical of those which play the tantalizing tangos and rhumbas broadcast from South American Stations and heard so regularly in the United States.

YV3BC Caracas VENEZUELA

6.15 Megacycles - - 48.78 Meters

This station, located in the capital of the Republic of Venezuela — the most northerly country in South America — is heard consistently by Round-the-World radio listeners in the United States. Its entertaining programs offer a variety of typically South American tangos, rhumbas, songs, etc.

YV3BC broadcasts daily from 10:30 A.M. to 1:00 P.M., and from 4:30 to 9:30 P.M. (E.S.T.). Like several of the other South American stations, announcements are not made in English, but this station can be readily identified by a distinctive chimes signal.

"LA VOZ DE BARRANQUILLA"

P O Box 719
BARRANQUILLA -- COLOMBIA -- S A

WE VERIFY YOUR RECEPTION OF OUR STATION ON

HJ-1-ABB

(FORMELY H K D)

ON THE AIR
DAILY 8 TO 10 PM E S T
THURSDAY SPECIAL 15 WC
PROGRAM 10 TO 10 30 PM

Daily: 11 1/2 am - 1 pm. and 5 to 10 pm

PLEASE REPORT AGAIN
THANKS!
E. J. PELLET
OWNER & OPERATOR

POWER 150

"Ha-Ya-Une-Ah-Bay-Bay," says the station announcer in his best South American English, and you know you are listening to HJ1ABB, Barranquilla, Colombia. And, if you want your reception verified, this station upon request will mail you one of the above verification cards.

VK2ME SYDNEY AUSTRALIA

9.59 Megacycles - - 31.28 Meters

"The Voice of Australia" is a welcome visitor each Sunday in many U. S. homes, with its diversified program of music, including an interesting and instructive talk on some section of Australia. The time of day is also broadcast, together with the chimes from the clock located on the Sydney Post Office.

Each program is opened and closed with the famous laughing call of the Kookabura bird. VK2ME broadcasts Sundays only, from 1:00 to 3:00, 5:00 to 9:00 A.M., and from 11:30 A.M. to 1:30 P.M. (E.S.T.).

HBL Geneva SWITZERLAND

9.59 Megacycles - - 31.27 Meters

This station, together with HBP, is maintained by the League of Nations for a dual purpose. First: to broadcast discussions of the various problems placed before this tribunal and, second, to create good will and a better understanding among the nations of the world.

The program is Saturday — 5:30 to 6:15 P.M. (E.S.T.) — consists of three fifteen minute talks — given first in English, then French, then Spanish. Listeners who wish to communicate with this station will receive prompt, courteous acknowledgment of their letters. Answers to any questions will be cheerfully given. Address: Information Section, League of Nations, Geneva, Switzerland.

TIME TABLE *and* LOG of the MOST FREQUENTLY HEARD FOREIGN STATIONS

NOTE: During the winter months, stations on 31 meter and 49 meter bands come in best late afternoon and nights. Stations on 19 meter and 25 meter bands are best in daylight hours.

Since there are over 200 Foreign Stations on the air — regularly or irregularly — the Round-the-World radio listener has plenty of opportunity for exploring among the short waves. Presented here is a carefully selected list of Overseas Stations, chosen on the basis of quality of program broadcast, consistency of reception and volume. These stations offer the greatest entertainment and are the ones most frequently heard. Their broadcasts provide an enjoyable variety of concert and symphony orchestras, typical native songs and music, and a goodly fund of information on current daily topics. See next page for additional Short Wave stations.

<i>Megacycles</i>	<i>Meters</i>	<i>Call</i>	<i>Location</i>	<i>Time of Broadcasts (Eastern Standard Time)</i>
21.47 17.78 15.14 11.86 11.75 9.58 6.05	13.97 16.86 19.82 25.28 25.53 31.30 49.59	GSH GSG GSF GSE GSD GSC GSA	London, ENGLAND	6 A.M. to 8:30 A.M., Daily 6 A.M. to 10:45 A.M. 8:40 A.M. to 12:45 Noon — 1:00 to 5:30 P.M. 8:45 A.M. to 12:45 Noon — 1:00 to 5:30 P.M. 12:00 P.M. to 2:15 A.M., 6:00-8:00 P.M. 6 P.M. to 8 P.M., Daily 6:00-9:00 P.M.
15.24 11.88 11.70	19.68 25.20 25.63	FYA FYA FYA	Paris, FRANCE	7 to 10 A.M., Daily 10 A.M. to 5 P.M., Daily 2 to 11 P.M., Daily
15.20 11.76 9.56	19.73 25.51 31.38	DJB DJD DJA	Berlin, GERMANY	1 to 2 A.M. — 4:00 to 5:30 A.M. and 8:00 to 11:00 A.M. 1 to 4:30 P.M. — 7 to 11 P.M., Daily 4:30 to 5:30 A.M. — 8 to 10:00 A.M. — 5:00 to 8:15 P.M. Daily 12:15 to 4:00 P.M. — 8:45 to 10:30 P.M.
6.02	49.83	DJC		
11.81	25.40	12RO	Rome, ITALY	11:30 to 12:30 A.M. — 1:15 to 6 P.M., Daily
15.11 5.96	19.84 50.26	HVJ HVJ	Vatican City, ITALY	5:00 to 5:30 A.M., Daily 5 to 6 A.M., Sunday — 10:00 to 10:30 A.M., Daily
17.77 11.73	16.88 25.57	PHI PHI	Huizen, HOLLAND	7:30 to 11:00 A.M., Daily 7:30 to 10:00 A.M., Irreg.
9.86	30.40	EAQ	Madrid, SPAIN	5 to 7 P.M., Daily — Sat. 12:00 to 2 P.M.
9.60	31.25	CT1AA	Lisbon, PORTUGAL	Tues., Fri., 5 to 7 P.M.
9.59 7.79	31.27 38.47	HBL HBP	Geneva, SWITZERLAND	5:30 to 6:15 P.M. 5:30 to 6:15 P.M.
9.59	31.28	VK2ME	Sydney, AUSTRALIA	Sunday 12 to 2 A.M. — 4:30 to 8:30 A.M. 11:30 A.M. to 1:30 P.M.
9.58 9.51	31.31 31.55	VK3LR VK3ME	Melbourne, AUSTRALIA	3 to 8:00 A.M., Daily except Sunday 5 to 7 A.M., Wed., Sat.
7.88	38.07	J1AA	Kemikawa — Cho Kiba-Chen — JAPAN	4 to 7 A.M., Daily Relays JOAK
6.66	45.00	HC2RL	Guayaquil, ECUADOR	6 to 8 P.M., Sunday — Tues. 9 to 12 P.M.
6.62	45.31	PRADO	Rio Bomba, ECUADOR	9 to 11 P.M., Thursday
6.44	46.50	HJ1ABB	Barranquilla, COLOMBIA	7 to 10 P.M., Daily
6.25	48.00	HJ3ABF	Bogota, COLOMBIA	7 to 11 P.M., Daily
6.15 6.11	48.78 49.08	YV3RC YV2RC	Caracas, VENEZUELA	10:30 A.M. to 1 P.M. — 4:30 to 9:30 P.M., Week days 5 to 10 P.M., Daily
6.06	49.50	HIX	Santo Domingo, DOMINICAN REPUBLIC	Tues. and Fri. 8:00 to 10 P.M. — Sun. 2:30 to 4:45 P.M.
6.02	49.80	XEBT	Mexico City, MEXICO	6 to 12 P.M., Irreg.
6.00	50.00	COC	Havana, CUBA	4 to 6 P.M., Daily
6.00	50.00	RV59	Moscow, U.S.S.R.	2 to 6 P.M., Daily
5.93	50.59	HJ4ABE	Medellin, COLOMBIA	6 to 11 P.M., Daily — Changes Schedule freq.
4.27	70.20	RV15	Khabarovsh, SIBERIA	1 to 9 A.M., Daily
4.11	73.00	HCJB	Quito, ECUADOR	7 to 10 P.M., Daily except Monday

A Partial LOG OF OTHER FOREIGN STATIONS

Megacycles	Meters	Call	LOCATION	Megacycles	Meters	Call	LOCATION
21.08	14.23	PSA	Rio de Janeiro, Brazil Calls WKK, WLK daytime	6.13	48.92	LCL	Jeløy, Norway Relays Oslo 11 A.M. to 6 P.M.
21.03	14.27	LSN	Buenos Aires, Argentine 8 A.M. to 4 P.M. WKK and WLK	6.12	49.00		Johannesburg, Africa 4 to 6 A.M., 8 to 10:30 A.M., 11 A.M. to 3:40 P.M.
20.02	14.99	DHO	Nauen, Germany Calls PPU and LSM mornings	6.12	49.00	PK1WK	Bandoeng, Java, 5 to 6:30 A.M.
19.35	15.50	FTM	St. Assise, France Calls LSG 10:00 A.M.—2:00 P.M.	6.11	49.08	VE9HX	Halifax, N. S. 8:30 to 11:30 A.M., 5 to 10 P.M.
18.04	16.63	GAA	Rugby, England Calls Argentine 10:00 A.M. to 2:00 P.M.	6.11	49.08	VUC	Calcutta, India, 9:30 A.M. to noon, Saturdays 11:45 P.M. to 3 A.M.
17.75	16.92	HSP	Bangkok, Siam Calls Germany 4:30 A.M. to 6:30 A.M.	6.10	49.20	HJ1ABD	Cartegena, Colombia 11:30 A.M. to 12:30 P.M., 7 to 9 P.M.
16.04	18.71	KKP	Kauahuku, Hawaii Calls KWU 1:00 to 7:00 P.M.	6.09	49.29	VE9GW	Bowmanville, Ontario Mon., Tues., Wed., 1 to 10 P.M. Thurs., 2 to 11 P.M. Fri., Sat., 6 A.M. to 11 P.M. Sun., 10 A.M. to 7 P.M.
15.81	19.02	LSL	Buenos Aires, Argentine Calls GAA 8 A.M. to 1 and FTM 1 to 2 P.M.	6.09	49.22	VE9BJ	St. John's, N.B., Canada Near 5 and 11 P.M.
14.53	20.65	LSN	Buenos Aires, Argentine Phones New York, daytimes	6.07	49.39	YV5BMO	Maracaibo, Venezuela Irregularly 5:30 to 11 P.M.
14.46	20.75	GBW	Rugby, England Phones MNC 6 A.M. to 6 P.M.	6.07	49.39	OXY	Shamelback, Denmark 2 to 6:30 P.M., irregular
11.72	25.60	CJRX	Winnipeg, Canada 6 to 10:30 P.M., Sun. 9 to 10 P.M.	6.07	49.39	VE9CS	Vancouver, B. C. Fri. 12:30 to 1:45 A.M. Sun. Noon to Midnight
10.67	28.12	CEC	Santiago, Chili Calls HJY, evenings, irregularly	6.06	49.50	HIX	Santo Domingo, R.D. Tues., Fri., 8:10 to 10:10 P.M. Sun., 8:40 to 10:40 A.M. and 2:40 to 4:40 P.M.
10.35	28.98	LSX	Buenos Aires, Argentine Thurs. and Fri. 8 P.M., Sat. 10 P.M.	6.06	49.50	VO7LO	Nairobi, Kenya Colony 11 A.M. to 2 P.M. daily
9.60	31.25	XETE	Mexico City 8 to 10 P.M., irregular	6.05	49.60	HJ3ABI	Bogota, Colombia 8 to 10 P.M., irregular
9.37	32.02	HJ5ABH	Palmira, Colombia 11 to 12 A.M. and 7:30 to 9:30 P.M.	6.02	49.83	CQN	Macao, China Mon., Fri., 7 to 9 A.M.
9.28	32.33	GCB	Rugby, England Calls CGA and SUV afternoons	6.01	49.96	VE9DN	Drummondville, Canada Sat., after 10:30 P.M.
9.12	32.89	CP5	La Paz, Bolivia 7:30 to 10:30 P.M., irregularly	6.01	49.96	COC	Havana, Cuba, Daily 4 to 6 P.M., Also irregular 8 to 10 P.M.
8.05	37.33	CNR	Rabat, Morocco, Africa Sunday 2:30 to 5 P.M.	5.99	50.08	YV4BSG	Caracas, Venezuela 4:30 to 10:30 P.M.
7.52	39.89	KKH	Kauahuku, Hawaii Calls KWO California evenings	5.97	50.25	HJ2ABC	Cucuta, Colombia 11 A.M. to Noon, 6 to 9 P.M.
7.40	40.55	HJ3ABD	Bogota, Colombia 7:30 to 11 P.M.	5.95	50.42	HJ4ABE	Medellin, Colombia, Mon., 7 to 11 P.M. Tues., Thurs., Sat., 6:15 to 8 P.M. Wed., Fri., 7:30 to 10:30 P.M.
7.22	41.55	HKE	Bogota, Colombia Mon. 6 to 7 P.M. Tues., Fri., 8 to 9 P.M.	5.95	50.42	TGX	Guatemala City, Sun., 2 to 5 A.M. And also near Midnight
7.00	42.86	HJ1ABE	Cartagena, Colombia Mon. 10, Wed. 8 P.M.	5.88	51.49	HJ2ABA	Tunja, Colombia 1 to 2 and 7:30 to 10 P.M.
6.67	44.96	HC2RL	Guayaquil, Ecuador Sun. 5:45 to 8, Tues. 9:15 to 11:45 P.M.	5.77	52.00	XDA and XAM	Mexico, Evenings near 7 P.M.
6.61	45.35	REN	Moscow, U.S.S.R., 1 to 6 P.M.	5.70	52.65	HCK	Quito, Ecuador Generally 8 to 11 P.M.
6.48	46.30	HJ5ABD	Cali, Colombia, 7 to 10 P.M.	5.60	53.57	HJ3ABC	Cali, Colombia, 8 to 10 P.M.
6.45	46.51	HJ1ABB	Barranquilla, Colombia 7:30 to 10 P.M. daily	4.32	69.44	GDB- G6RX	Rugby, England Evenings 7 to 10 P.M.
6.32	47.50	HIZ	Santo Domingo, R.D. Daily 4:40 to 5:40; Sat. 11 to 12:40 P.M.	4.25	70.65	RV15	Khabarovsk, U.S.S.R., 1 to 9 A.M.
6.23	47.80	HI1A	Dominican Republic 12:10 to 1:40 and 7:40 to 9:40 P.M. daily. Sun. 1:40 to 4:40 P.M. and 7:40 to 9:40 P.M.				
6.13	48.92	ZGE	Kuala Lumpur, Malaya States Sun., Tues., Fri. 6:40 to 8:40 A.M.				

LEADING U.S. SHORT-WAVE RADIO STATIONS

Megacycles	Meters	Call	LOCATION	Megacycles	Meters	Call	LOCATION
21.54	13.92	W8XX	Pittsburgh, Pa., 6 A.M. to 1 P.M., Relays for KDKA	9.59	31.27	W3XAU	Philadelphia, Pa. 11 A.M. to 5 P.M., irregular
21.41	14.01	WKK	Lawrenceville, N. J., 8 A.M. till 4 P.M. Phones PSA, Brazil	9.57	31.36	W1XAZ	Boston, Mass., 6 A.M. to Midnight
17.78	16.87	W3XAL	Bound Brook, N. J., 9 A.M. to 3 P.M.	9.53	31.49	W2XAF	Schenectady, N. Y. 6:45 P.M. to 10 P.M.
15.35	19.54	KWU	Dixon, Calif. 2 till 7 P.M. Phones to Hawaii	9.49	31.60	WEF	Rocky Point, N. Y. Heard in the evening
15.34	19.56	W2XAD	Schenectady, N. Y. Mon., Wed., Fri. 1:30 to 2:30 P.M. Sun. 1 to 3 P.M.	6.43	46.69	W3XAL	Bound Brook, N. J. Relays Chain Programs
15.27	19.64	W2XE	Wayne, N. J., 10 A.M. to 12 Noon Relays for WABC	6.14	48.86	W8XX	Pittsburgh, Pa., 3:30 P.M. to 1 A.M. Relays for KDKA
15.21	19.72	W8XX	Pittsburgh, Pa., 9 A.M. to 3:15 P.M. Relays for KDKA	6.12	49.00	W2XE	Wayne, N. J. 5 P.M. to 10 P.M. Relays for WABC
13.90	21.58	WQP	Rocky Point, N. Y. Calls RNE at intervals A.M.	6.10	49.18	W3XAL	Bound Brook, N. J., 4 P.M. to Midnight, Mon., Wed., Sat.
11.97	25.11	KKQ	Bolinas, Calif. Heard irregularly evenings	6.10	49.18	W9XF	Chicago, Ill. 3:30 to 7 P.M., 8:30 to 1 A.M.
11.87	25.27	W8XX	Pittsburgh, Pa. 3:30 to 9 P.M., Relays KDKA	6.08	49.34	W9XAA	Chicago, Ill. 1 P.M. to about 6 P.M. Sun.
11.83	25.36	W2XE	Wayne, N. J. Relays WABC 2 to 4 P.M.	6.06	49.50	W3XAU	Philadelphia, Pa., 7 P.M. to Midnight
11.79	25.42	W1XAL	Boston, Mass. Relays NBC Programs	6.06	49.50	W8XAL	Cincinnati, Ohio, 6:30 A.M. to 7 P.M., 10 P.M. to 2 A.M.
				6.04	49.67	W1XAL	Boston, Mass. Daily 6 to 7 P.M.

GET THE NEWS
BEFORE IT IS
PUBLISHED



POLICE CALLS

With a short wave radio, you can listen-in on the incessant alarms broadcast to cruising squad cars — you can thrill to the pulse quickening dramas of city life in which radio plays such an important part.

Police stations come on the air, broadcast their message, and immediately go off the air. When a Police Call is tuned in, you can listen to several others by simply keeping your dial at the same location, because there are a number of police stations on each wavelength.

120.48 Meters 2,490 Kilos
WPFJ Clarksburg, W. Va.
WPDZ Fort Wayne, Ind.
WPFJ Hammond, Ind.
WPGC Huntington, N. Y.
WPDZ Kokomo, Ind.
KGZU Lincoln, Nebr.
KGHJ Long Beach, Calif.
WPGS Mineola, N. Y.
KGHX Santa Ana, Calif.
KGZD San Diego, Calif.
KGHD Seattle, Wash.
KGHE Snoqualmie, Wash.
WPGN South Bend, Ind.

121.26 Meters 2,474 Kilos
WFOF Knoxville, Tenn.
KGHG Las Vegas, Nev.
WPDF Philadelphia, Pa.
KGHM Reno, Nev.
WPFQ Swarthmore, Pa.
WRDQ Toledo, Ohio

121.65 Meters 2,466 Kilos
WPGA Bay City, Mich.
KGQZ Cedar Rapids, Iowa
WPGK Cranston, R. I.
KGPN Davenport, Iowa
KGZG Des Moines, Iowa
WPDF Flint, Mich.
WPEC Memphis, Tenn.
KGPI Omaha, Nebr.
WPFV Pawtucket, R. I.
WPGH Port Huron, Mich.
KGPK Sioux City, Iowa
WPEM Woonsocket, R. I.

122.05 Meters 2,458 Kilos
WPDQ Akron, Ohio
WPDV Charlotte, N. C.
WRBH Cleveland, Ohio
KGZW Lubbock, Texas

WPGD Rockford, Ill.
WPDG Youngstown, Ohio
KGZI Wichita Falls, Texas

122.40 Meters 2,450 Kilos
WPEF Bronx, N. Y.
WPEE Brooklyn, N. Y.
KGZF Chanute, Kans.
KGZP Coffeyville, Kans.
KGPO Honolulu, Hawaii
WPDK Milwaukee, Wis.
WPEG New York, N. Y.
KGPH Oklahoma City, Okla.
KGPO Tulsa, Okla.
KGPZ Wichita, Kans.

122.85 Meters 2,442 Kilos
WPLG Binghamton, N. Y.
KGPK Denver, Colo.
WPEB Grand Rapids, Mich.
WMDZ Indianapolis, Ind.
WPFQ Jacksonville, Fla.
WFFT Lakeland, Fla.
WPDH Lansing, Mich.
WPDF Louisville, Ky.
WPFZ Miami, Fla.

122.85 Meters 2,442 Kilos
WPFQ Muskegon, Mich.
WPFX Palm Beach, Fla.
KGPP Portland, Ore.
WPFH Reading, Pa.
WPDH Richmond, Ind.
WPES Saginaw, Mich.
KCZR Salem, Ore.

123.45 Meters 2,430 Kilos
WPDQ Columbus, Ohio
WPDH Dayton, Ohio
WPFK Hackensack, N. J.
KGPB Minneapolis, Minn.
WPEK New Orleans, La.
KGZJ Phoenix, Ariz.

WPGI Portsmouth, Ohio
WPDS St. Paul, Minn.
WPGH Shreveport, La.

123.80 Meters 2,422 Kilos
WMJ Buffalo, N. Y.
KGPE Kansas City, Mo.
WPFU Portland, Maine
KGZC Topeka, Kans.
KGPG Vallejo, Calif.
WPDW Washington, D. C.

124.37 Meters 2,414 Kilos
KGZV Aberdeen, Wash.
WPGH Albany, N. Y.
KGZX Albuquerque, N. M.
WPDY Atlanta, Ga.
KGPS Bakersfield, Calif.
WPFH Baltimore, Md.
WPGI Columbus, Ga.
WCK-WPDX Detroit, Mich.
KGZM El Paso, Texas
KGZA Fresno, Calif.
WRDR Grosse Point, Mich.
WMO Highland Park, Mich.
WPGM Lagrange, Ga.
KGZO Santa Barbara, Calif.
KGPF Santa Fe, N. M.
KGPA Seattle, Wash.
KGHS Spokane, Wash.
KGZN Tacoma, Wash.
WPGA Tulare, Calif.
WPGJ Utica, N. Y.

124.69 Meters 2,406 Kilos
KGBZ Little Rock, Ark.
KGPW Salt Lake City, Utah

175.23 Meters 1,712 Kilos
WPDH Arlington, Mass.
KGPJ Beaumont, Texas
WPDH-C-D Chicago, Ill.

KVP Dallas, Texas
WPEI E. Providence, R. I.
KGPL Los Angeles, Calif.
WPFN New Bedford, Mass.
WFFA Newton, Mass.
KGJX Pasadena, Calif.
WPDU Pittsburgh, Pa.
WPGF Providence, R. I.
KGZY San Bernardino, Calif.
WPEH Somerville, Mass.
KGZQ Waco, Texas

175.85 Meters 1,706 Kilos
WKDU Cincinnati, Ohio
WPET Lexington, Ky.
KGPC St. Louis, Mo.

178.36 Meters 1,682 Kilos
KGHO Des Moines, Iowa
WPGG Findlay, Ohio

179.21 Meters 1,674 Kilos
KGHK Palo Alto, Calif.
KGPD San Francisco, Calif.
KGPM San Jose, Calif.
KGZT Santa Cruz, Calif.

180.07 Meters 1,666 Kilos
WRDS East Lansing, Mich.
WMP Framingham, Mass.
WPEW Northampton, Mass.
WPEL Bridgewater, Mass.

180.88 Meters 1,658 Kilos
KSW Berkeley, Calif.
WPGC S. Schenectady, N. Y.
KGZE San Antonio, Texas

184.05 Meters 1,630 Kilos
WEY Boston, Mass.
WKDT Detroit, Mich.
KGPD San Francisco, Calif.
KIDA Seattle, Wash.

Short Waves Carry the Conversations between AIRPLANES and AIRPORTS



Skilled pilots, winging their way across the continent in mail and passenger planes, keep in constant touch with their ground crews via short wave radio.

With a Round-the-World radio set, you can eavesdrop on these epics of the air — hear warnings sent aloft of blinding fogs and hazardous storms — then, on the same wave length, listen to the voices of the pilots themselves, punctuated by the steady drone of the mighty motors.

Today, there are 138 Airplane Stations in the United States. They are assigned to no specific wave length sector — are interspersed throughout the entire short wave band — but are most concentrated between 3000-3500 kilocycles, and 52-59 meters (5.0 - 5.5 megacycles).

Short Waves Also Bring Broadcasts from SHIPS at SEA . . .

These stations relay telephone conversations from shore to ships, and vice versa. Also, they are frequently rented to broadcast special programs direct from the big ocean liners at sea. Ship Stations broadcast on four bands:

16.85 — 18.27 Meters (17.80 — 16.42 Megacycles)
22.50 — 24.30 Meters (13.34 — 12.35 Megacycles)
33.93 — 36.58 Meters (8.84 — 8.20 Megacycles)
67.87 — 73.17 Meters (4.42 — 4.10 Megacycles)

Phone calls from shore to ships are most frequently broadcast from Station WOO, Ocean Gate, N. J., on 17.12 megacycles (17.52 meters), and 9.53 megacycles (35.02 meters). This station phones ships, England and South America.

Calls of Prominent Passenger Liners:

GLRZ	Aquitania	DAAC	Europa
GMJQ	Belgianland	DXJC	Hamburg
GBZW	Berengeria	FNSM	Ile de France
DDAS	Bremen	GFVV	Majestic
GFJX	Caledonia	VQJM	Monarch of Bermuda
DOBX	Columbus	DHRL	New York
DDDT	Deutschland	GLSQ	Olympic
GMBJ	Empress of Britain	VQJP	Queen of Bermuda

AMATEUR PHONE STATIONS

You can listen to the "Radio Engineers of Tomorrow" chat through thousands of miles of space with friends they never see. These stations are licensed by the Federal Radio Commission the same as any commercial broadcast station. But, these so-called "Amateur" stations are not assigned to any definite wave lengths, they can broadcast anywhere within the "amateur bands" established by governmental regulations. You can listen to Amateur Phone conversations at approximately 21 meters (14 megacycles), 75 meters (4.0 megacycles), 135-160 meters (1750-2000 kilocycles). The amateur band between 40-42 meters is reserved for broadcasts in code.



UNITED STATES BROADCAST STATIONS

Call Kilocycles Location

KABC 1420 San Antonio, Tex.
 KALE 1300 Portland, Ore.
 KARK 890 Little Rock, Ar.
 KASA 1210 Elk City, Okla.
 KBPS 1420 Portland, Ore.
 KBTM 1200 Jonesboro, Ark.
 KCMC 1420 Texarkana, Ark.
 KCRC 1370 Enid, Okla.
 KCRJ 1310 Jerome, Ariz.
 KDB 1500 Santa Barbara, Cal.
 KDFN 1440 Casper, Wyo.
 KDKA 980 Pittsburgh, Pa.
 KDRL 1210 Devils Lake, N. D.
 KDYL 1290 Salt Lake City, U.
 KECA 1430 Los Angeles, Cal.
 KELW 780 Burbank, Cal.
 KERN 1370 Bakersfield, Cal.
 KEX 1180 Portland, Ore.
 KFAB 770 Lincoln, Nebr.
 KFAC 1300 Los Angeles, Cal.
 KFBB 1280 Great Falls, Mont.
 KFBI 1050 Abilene, Kan.
 KFBK 1310 Sacramento, Cal.
 KFBL 1370 Everett, Wash.
 KFDL 560 Beaumont, Tex.
 KFDY 780 Brookings, S. D.
 KFEL 920 Denver, Colo.
 KFEQ 680 St. Joseph, Mo.
 KFGQ 1310 Boone, Iowa
 KFH 1300 Wichita, Kan.
 KFI 640 Los Angeles, Cal.
 KFIO 1120 Spokane, Wash.
 KFIZ 1420 Fond du Lac, Wis.
 KFJB 1200 Marshalltown, Iowa
 KFJI 1210 Klamath Falls, Ore.
 KFJM 1370 Grand Forks, N. D.
 KFJR 1300 Portland, Ore.
 KFJZ 1370 Fort Worth, Tex.
 KFKA 880 Greeley, Colo.
 KFKU 1220 Lawrence, Kan.
 KFNF 890 Shenandoah, Iowa
 KFOR 1210 Lincoln, Nebr.
 KFOX 1250 Long Beach, Cal.
 KFPL 1310 Dublin, Tex.
 KFPW 1310 Greenville, Tex.
 KFPW 1210 Fort Smith, Ark.
 KFPY 890 Spokane, Wash.
 KFQD 600 Anchorage, Alaska
 KFRC 610 San Francisco, Cal.
 KFRU 630 Columbia, Mo.
 KFSD 600 San Diego, Cal.
 KFSG 1120 Los Angeles, Cal.
 KFUO 550 St. Louis, Mo.
 KFVD 1000 Los Angeles, Cal.
 KFVS 1210 Cape Girardeau, Mo.
 KFWB 950 Hollywood, Cal.
 KF XD 1200 Nampa, Idaho
 KFXF 920 Denver, Colo.
 KFXJ 1200 Grand Junction, Colo.
 KFXM 1210 San Bernardino, Cal.
 KFXR 1310 Oklahoma, Okla.
 KFYO 1310 Lubbock, Tex.
 KFYR 550 Bismarck, N. D.
 KGA 1470 Spokane, Wash.
 KGAR 1370 Tucson, Ariz.
 KGB 1330 San Diego, Cal.
 KGBU 900 Ketchikan, Alaska
 KGBX 1310 Springfield, Mo.
 KGBZ 930 York, Nebr.

Call Kilocycles Location

KGCA 1270 Decorah, Iowa
 KGCR 1210 Watertown, S. D.
 KGCU 1240 Manda, N. D.
 KGCX 1310 Wolf Point, Mont.
 KGDE 1200 Fergus Falls, Minn.
 KGDM 1100 Stockton, Cal.
 KGDY 1340 Huron, S. D.
 KGEK 1200 Yuma, Colo.
 KGER 1360 Long Beach, Cal.
 KGEZ 1310 Kalispell, Mont.
 KGFF 1420 Shawnee, Okla.
 KGFG 1370 Olahoma, Okla.
 KGFI 1500 Corpus Christi, Tex.
 KGFJ 1200 Los Angeles, Cal.
 KGFK 1500 Moorehead, Minn.
 KGFL 1370 Rosewell, N. M.
 KGFW 1310 Kearney, Nebr.
 KGFX 630 Pierre, S. D.
 KGGC 1420 San Francisco, Cal.
 KGGF 1010 Coffeyville, Kan.
 KGGM 1230 Albuquerque, N. M.
 KGHF 1320 Pueblo, Colo.
 KGGH 1200 Little Rock, Ark.
 KGHF 950 Billings, Mont.
 KGIR 1340 Butte, Mont.
 KGIW 1420 Alamosa, Colo.
 KGIX 1420 Las Vegas, Nev.
 KGKB 1500 Tyler, Tex.
 KGKL 1370 San Angelo, Tex.
 KGKO 570 Wichita Falls, Tex.
 KGKY 1500 Scottsbluff, Nebr.
 KGMB 1320 Honolulu, Hawaii
 KGNF 1430 North Platte, Nebr.
 KGNU 1340 Dodge City, Kan.
 KGO 790 San Francisco, Cal.
 KGRS 1410 Amarillo, Tex.
 KGU 750 Honolulu, Hawaii
 KGVO 1200 Missoula, Mont.
 KGW 620 Portland, Ore.
 KGY 1210 Olympia, Wash.
 KHJ 900 Los Angeles, Cal.
 KHQ 590 Spokane, Wash.
 KICA 1370 Clovis, N. M.
 KICK 1420 Carter Lake, Iowa
 KID 1320 Idaho Falls, Idaho
 KIDO 1350 Boise, Idaho
 KIDW 1420 Lamar, Colo.
 KIEM 1210 Eureka, Cal.
 KIEV 850 Glendale, Cal.
 KIFH 1310 Juneau, Alaska
 KIFS 1518 Fort Klamath, Ore.
 KIT 1310 Yakima, Wash.
 KJBS 1070 San Francisco, Cal.
 KJR 970 Seattle, Wash.
 KLCN 1290 Blytheville, Ark.
 KLO 1400 Ogden, Utah
 KLPM 1240 Minot, N. D.
 KLRA 1390 Little Rock, Ark.
 KLS 1440 Oakland, Cal.
 KLUF 1370 Galveston, Tex.
 KLX 880 Oakland, Cal.
 KLZ 560 Denver, Colo.
 KMA 930 Shenandoah, Iowa
 KMAC 1370 San Antonio, Tex.
 KMBC 950 Kansas City, Mo.
 KMED 1310 Medford, Ore.
 KMJ 580 Fresno, Cal.
 KMLB 1200 Monroe, La.
 KMMJ 740 Clay Center, Nebr.

Call Kilocycles Location

KMO 1330 Tacoma, Wash.
 KMOX 1090 St. Louis, Mo.
 KMPC 710 Beverly Hills, Cal.
 KMTR 570 Hollywood, Cal.
 KNOW 1500 Austin, Tex.
 KNX 1050 Hollywood, Cal.
 KOA 830 Denver, Colo.
 KOAC 550 Corvallis, Ore.
 KOB 1180 Albuquerque, N. M.
 KOH 1380 Reno, Nev.
 KOIL 1260 Council Bluffs, Ia.
 KOIN 940 Portland, Ore.
 KOL 1270 Seattle, Wash.
 KOMA 1480 Oklahoma City, Okla.
 KOMO 920 Seattle, Wash.
 KONO 1370 San Antonio, Tex.
 KOOS 1370 Marshfield, Ore.
 KORE 1420 Eugene, Ore.
 KOTN 1500 Pine Bluff, Ark.
 KOY 1390 Phoenix, Ariz.
 KPCB 650 Seattle, Wash.
 KPJM 1500 Prescott, Ariz.
 KPO 680 San Francisco, Cal.
 KPOF 880 Denver, Colo.
 KPPC 1210 Pasadena, Cal.
 KPQ 1500 Wenatchee, Wash.
 KPRC 920 Houston, Tex.
 KQV 1380 Pittsburgh, Pa.
 KQW 1010 San Jose, Cal.
 KRE 1370 Berkeley, Cal.
 KREG 1500 Santa Ana, Cal.
 KRGV 1260 Harlingen, Tex.
 KRKD 1120 Los Angeles, Cal.
 KRLD 1040 Dallas, Tex.
 KRMD 1310 Shreveport, La.
 KROW 930 Oakland, Cal.
 KRSC 1120 Seattle, Wash.
 KSAC 580 Manhattan, Kan.
 KSCJ 1330 Sioux City, Iowa
 KSD 550 St. Louis, Mo.
 KSEI 890 Pocatello, Idaho
 KSL 1130 Salt Lake City, U.
 KSO 1320 Des Moines, Iowa
 KSOO 1110 Sioux Falls, S. D.
 KSTP 1460 St. Paul, Minn.
 KSUN 1200 Lowell, Ariz.
 KTAB 560 San Francisco, Cal.
 KTAR 620 Phoenix, Ariz.
 KTAT 1240 Fort Worth, Tex.
 KTBS 1450 Shreveport, La.
 KTFI 1240 West Twin Falls, Ida.
 KTHS 1060 Hot Springs National Park, Ark.
 KTM 780 Los Angeles, Cal.
 KTRB 740 Modesto, Cal.
 KTRH 630 Houston, Tex.
 KTSA 1290 San Antonio, Tex.
 KTSM 1310 El Paso, Tex.
 KTUL 1400 Tulsa, Okla.
 KTW 1220 Seattle, Wash.
 KUJ 1370 Walla Walla, Wash.
 KUMA 1420 Yuma, Ariz.
 KUOA 1260 Fayetteville, Ark.
 KUSD 890 Vermillion, S. D.
 KVI 570 Tacoma, Wash.
 KVL 1370 Seattle, Wash.
 KVOA 1260 Tucson, Ariz.
 KVOO 1140 Tulsa, Okla.

Call Kilocycles Location

KVOR 1270 Colorado Springs, Colo.
 KVOS 1200 Bellingham, Wash.
 KWCR 1430 Cedar Rapids, Ia.
 KWEA 1210 Shreveport, La.
 KWFV 1210 Hilo, Hawaii
 KWG 1200 Stockton, Cal.
 KWJJ 1040 Portland, Ore.
 KWK 1350 St. Louis, Mo.
 KWKC 1370 Kansas City, Mo.
 KWKH 850 Shreveport, La.
 KWLC 1270 Decorah, Iowa
 KWSC 1220 Pullman, Wash.
 KWTO 560 Springfield, Mo.
 KWWG 1260 Brownsville, Tex.
 KWYO 1370 Sheridan, Wyo.
 KXA 760 Seattle, Wash.
 KXL 1420 Portland, Ore.
 KXO 1500 El Centro, Cal.
 KXRO 1310 Aberdeen, Wash.
 KXYZ 1440 Houston, Tex.
 KYA 1230 San Francisco, Cal.
 KYW 1020 Chicago, Ill.
 WAAB 1410 Boston, Mass.
 WAAF 920 Chicago, Ill.
 WAAT 940 Jersey City, N. J.
 WAAW 660 Omaha, Nebr.
 WABC 860 New York, N. Y.
 WABI 1200 Bangor, Me.
 WACO 1420 Waco, Tex.
 WADC 1320 Akron, Ohio
 WAGM 1420 Presque Isle, Me.
 WAIU 640 Columbus, Ohio
 WALA 1410 Mobile, Ala.
 WALR 1210 Zanesville, Ohio
 WAMC 1420 Anniston, Ala.
 WAML 1310 Laurel, Miss.
 WAPI 1140 Birmingham, Ala.
 WARD 1400 Brooklyn, N. Y.
 WASH 1270 Grand Rapids, Mich.
 WATR 1190 Waterbury, Conn.
 WAVE 940 Louisville, Ky.
 WAWZ 1350 Zarephath, N. J.
 WAZL 1420 Hazelton, Pa.
 WBAA 1400 Lafayette, Ind.
 WBAL 1060 Baltimore, Md.
 WBAP 800 Fort Worth, Tex.
 WBAX 1210 Wilkes-Barre, Pa.
 WBBC 1400 Brooklyn, N. Y.
 WBBL 1210 Richmond, Va.
 WBBM 770 Chicago, Ill.
 WBBR 1300 Brooklyn, N. Y.
 WBBZ 1200 Ponca City, Okla.
 WBCM 1410 Bay City, Mich.
 WBEN 900 Buffalo, N. Y.
 WBEO 1310 Marquette, Mich.
 WBHS 1200 Huntsville, Ala.
 WBIG 1440 Greensboro, N. C.
 WBNO 1200 New Orleans, La.
 WBNS 1430 Columbus, Ohio
 WBNX 1350 New York, N. Y.
 WBOQ 860 New York, N. Y.
 WBOW 1310 Terre Haute, Ind.
 WBRC 930 Birmingham, Ala.
 WBRE 1310 Wilkes-Barre, Pa.
 WBSO 920 Babson Park, Mass.
 WBT 1080 Charlotte, N. C.
 WBTM 1370 Danville, Va.

(Continued on next page)

UNITED STATES BROADCAST STATIONS

Call Kilocycles Location

(Continued from preceding page)

WBZ 990 Boston, Mass.
WBZA 990 Springfield, Mass.
WCAC 600 Storrs, Conn.
WCAD 1220 Canton, N. Y.
WCAE 1220 Pittsburgh, Pa.
WCAL 1250 Northfield, Minn.
WCAM 1280 Camden, N. J.
WCAO 600 Baltimore, Md.
WCAP 1280 Asbury Park, N. J.
WCAT 1200 Rapid City, S. D.
WCAU 1170 Philadelphia, Pa.
WCAZ 1200 Burlington, Vt.
WCAZ 1070 Carthage, Ill.
WCBA 1440 Allentown, Pa.
WCBF 1080 Zion, Ill.
WCBM 1370 Baltimore, Md.
WCBS 1210 Springfield, Ill.
WCCO 810 Minneapolis, Minn.
WCFL 970 Chicago, Ill.
WCHS 580 Charleston, W. Va.
WCKY 1490 Covington, Ky.
WCLO 1200 Janesville, Wis.
WCLS 1310 Joliet, Ill.
WCNW 1500 Brooklyn, N. Y.
WCOA 1340 Pensacola, Fla.
WCOE 880 Meriden, Miss.
WCRW 1210 Chicago, Ill.
WCSH 1360 Charleston, S. C.
WCSH 940 Portland, Me.
WDAE 1220 Tampa, Fla.
WDAF 610 Kansas City, Mo.
WDAG 1410 Amarillo, Tex.
WDAH 1310 El Paso, Tex.
WDAS 1370 Philadelphia, Pa.
WDAY 940 Fargo, N. D.
WDBJ 930 Roanoke, Va.
WDBO 580 Orlando, Fla.
WDEL 1120 Wilmington, Del.
WDEV 550 Waterbury, Vt.
WDGY 1180 Minneapolis, Minn.
WDNC 1500 Durham, N. C.
WDOD 1280 Chattanooga, Tenn.
WDRS 1230 Hartford, Conn.
WDSU 1250 New Orleans, La.
WDZ 1070 Tuscola, Ill.
WEAF 660 New York, N. Y.
WEAN 780 Providence, R. I.
WEBC 1290 Superior, Wis.
WEBQ 1210 Harrisburg, Ill.
WEBR 1310 Buffalo, N. Y.
WEDC 1210 Chicago, Ill.
WEED 1420 Greenville, N. C.
WEEI 590 Boston, Mass.
WEEU 830 Reading, Pa.
WEHC 1350 Charlottesville, Va.
WEHS 1420 Cicero, Ill.
WELL 1420 Battle Creek, Mich.
WENC 1420 Albany, Ga.
WENR 870 Chicago, Ill.
WESG 680 Elmira, N. Y.
WEVD 1300 New York, N. Y.
WEW 760 St. Louis, Mo.
WEXL 1310 Royal Oak, Mich.
WFAA 800 Dallas, Tex.
WFAB 1300 New York, N. Y.
WFAM 1200 South Bend, Ind.
WFAS 1210 White Plains, N. Y.
WFBC 1200 Greenville, S. C.

Call Kilocycles Location

WFBE 1200 Cincinnati, Ohio
WFBG 1310 Altoona, Pa.
WFBF 1360 Syracuse, N. Y.
WFBM 1230 Indianapolis, Ind.
WFBT 1270 Baltimore, Md.
WFDL 1310 Flint, Mich.
WFEA 1430 Manchester, N. H.
WFI 560 Philadelphia, Pa.
WFLA 620 Clearwater, Fla.
WGL 1500 Lancaster, Pa.
WGAR 1450 Cleveland, Ohio
WGBB 1210 Freeport, N. Y.
WGBF 630 Evansville, Ind.
WGBI 880 Scranton, Pa.
WGCM 1210 Mississippi City, Miss.
WGCP 1250 Newark, N. J.
WGES 1360 Chicago, Ill.
WGH 1310 Newport News, Va.
WGL 1370 Fort Wayne, Ind.
WGLC 1370 Hudson Falls, N. Y.
WGN 720 Chicago, Ill.
WGNV 1210 Chester Twp., N. Y.
WGR 550 Buffalo, N. Y.
WGST 890 Atlanta, Ga.
WGY 790 Schenectady, N. Y.
WHA 940 Madison, Wis.
WHAD 1120 Milwaukee, Wis.
WHAM 1150 Rochester, N. Y.
WHAS 820 Louisville, Ky.
WHAT 1310 Philadelphia, Pa.
WHAZ 1300 Troy, N. Y.
WHB 860 Kansas City, Mo.
WHBC 1200 Canton, Ohio
WHBD 1370 Mt. Orab, Ohio
WHBF 1210 Rock Island, Ill.
WHBL 1410 Sheboygan, Wis.
WHBQ 1370 Memphis, Tenn.
WHBU 1210 Anderson, Ind.
WHBY 1200 Green Bay, Wis.
WHDF 1370 Calumet, Mich.
WHDH 830 Boston, Mass.
WHDL 1420 Tupper Lake, N. Y.
WHEB 740 Portsmouth, N. H.
WHEC 1430 Rochester, N. Y.
WHEF 1500 Kosciusko, Miss.
WHET 1370 Dothan, Ala.
WHFC 1420 Cicero, Ill.
WHIS 1410 Bluefield, W. Va.
WHK 1390 Cleveland, Ohio
WHN 1010 New York, N. Y.
WHO 1000 Des Moines, Ia.
WHOM 1450 Jersey City, N. J.
WHP 1430 Harrisburg, Pa.
WIBA 1280 Madison, Wis.
WIBG 970 Glenside, Pa.
WIBM 1370 Jackson, Mich.
WIBU 1210 Poynette, Wis.
WIBW 580 Topeka, Kan.
WIBX 1200 Utica, N. Y.
WICC 600 Bridgeport, Conn.
WIL 1200 St. Louis, Mo.
WILL 890 Urbana, Ill.
WILM 1420 Wilmington, Del.
WIND 560 Gary, Ind.
WINS 1180 New York, N. Y.
WIOD 1300 Miami, Fla.
WIP 610 Philadelphia, Pa.
WIS 1010 Columbia, S. C.

Call Kilocycles Location

WISN 1120 Milwaukee, Wis.
WJAC 1310 Johnstown, Pa.
WJAG 1060 Norfolk, Nebr.
WJAR 890 Providence, R. I.
WJAS 1290 Pittsburgh, Pa.
WJAX 900 Jacksonville, Fla.
WJAY 610 Cleveland, Ohio
WJBC 1200 La Salle, Ill.
WJBI 1210 Red Bank, N. J.
WJBK 1500 Detroit, Mich.
WJBL 1200 Decatur, Ill.
WJBO 1420 Baton Rouge, La.
WJBW 1200 New Orleans, La.
WJBY 1210 Gadsden, Ala.
WJDX 1270 Jackson, Miss.
WJEJ 1210 Hagerstown, Md.
WJEM 990 Tupelo, Miss.
WJIM 1210 Lansing, Mich.
WJJD 1130 Chicago, Ill.
WJMS 1420 Ironwood, Mich.
WJR 750 Detroit, Mich.
WJSV 1460 Washington, D. C.
WJTL 1370 Atlanta, Ga.
WJW 1210 Akron, Ohio
WJZ 760 New York, N. Y.
WKAQ 1240 San Juan, Puerto Rico
WKAR 1040 East Lansing, Mich.
WKBB 1500 East Dubuque, Ill.
WKBF 1400 Indianapolis, Ind.
WKBH 1380 La Crosse, Wis.
WKBI 1420 Cicero, Ill.
WKBN 570 Youngstown, Ohio
WKBO 1200 Harrisburg, Pa.
WKBV 1500 Richmond, Ind.
WKBW 1480 Buffalo, N. Y.
WKBE 1500 Ludington, Mich.
WKEU 1500 Lagrange, Ga.
WKFI 1210 Greenwood, Miss.
WKJC 1200 Lancaster, Pa.
WKOK 1210 Sunbury, Pa.
WKRC 550 Cincinnati, Ohio
WKY 900 Oklahoma, Okla.
WKZO 590 Kalamazoo, Mich.
WLAC 1470 Nashville, Tenn.
WLAP 1420 Lexington, Ky.
WLB 1250 Minneapolis, Minn.
WLBC 1310 Muncie, Ind.
WLBK 1420 Kansas City, Kan.
WLBL 900 Stevens Point, Wis.
WLBW 1260 Erie, Pa.
WLBZ 620 Bangor, Me.
WLEU 1420 Erie, Pa.
WLEY 1370 Lexington, Mass.
WLIT 560 Philadelphia, Pa.
WLNH 1310 Laconia, N. H.
WLS 870 Chicago, Ill.
WLTH 1400 Brooklyn, N. Y.
WLVA 1370 Lynchburg, Va.
WLW 700 Cincinnati, Ohio
WLWL 1100 New York, N. Y.
WMAL 630 Washington, D. C.
WMAQ 670 Chicago, Ill.
WMAS 1420 Springfield, Mass.
WMAZ 1180 Macon, Ga.
WMB 1420 Detroit, Mich.
WMBD 1440 Peoria, Ill.
WMBF 1300 Miami Beach, Fla.
WMBG 1210 Richmond, Va.
WMBH 1420 Joplin, Mo.

Call Kilocycles Location

WMBI 1080 Chicago, Ill.
WMBO 1310 Auburn, N. Y.
WMBQ 1500 Brooklyn, N. Y.
WMBR 1370 Jacksonville, Fla.
WMC 780 Memphis, Tenn.
WMCA 570 New York, N. Y.
WMEX 1500 Chelsea, Mass.
WMMN 890 Fairmont, W. Va.
WMPC 1200 Lapeer, Mich.
WMT 600 Waterloo, Iowa
WNAC 1230 Boston, Mass.
WNAD 1010 Norman, Okla.
WNAX 570 Yankton, S. D.
WNB 1500 Binghamton, N. Y.
WNBH 1310 New Bedford, Mass.
WNBO 1200 Silverhaven, Pa.
WNB 1430 Memphis, Tenn.
WNBW 1200 Carbondale, Pa.
WNBX 1260 Springfield, Vt.
WNBZ 1290 Saranac Lake, N. Y.
WNE 1290 San Juan, Puerto Rico
WNEW 1250 Newark, N. J.
WNOX 560 Knoxville, Tenn.
WNRA 1420 Muscle Shoals City, Ala.
WNYC 810 New York, N. Y.
WOAI 1190 San Antonio, Tex.
WOCL 1210 Jamestown, N. Y.
WOI 640 Ames, Iowa
WOKO 1430 Albany, N. Y.
WOL 1310 Washington, D. C.
WOMT 1210 Manitowoc, Wis.
WOOD 1270 Grand Rapids, Mich.
WOPI 1500 Bristol, Tenn.
WOQ 1300 Kansas City, Mo.
WOR 710 Newark, N. J.
WORC 1280 Worcester, Mass.
WORK 1000 York, Pa.
WOS 630 Jefferson City, Mo.
WOSU 570 Columbus, Ohio
WOW 1130 New York, N. Y.
WOW 590 Omaha, Nebr.
WOWO 1160 Fort Wayne, Ind.
WPAD 1420 Paducah, Ky.
WPEN 1500 Philadelphia, Pa.
WPFB 1370 Hattiesburg, Miss.
WPG 1100 Atlantic City, N. J.
WPHR 1200 Petersburg, Va.
WPRO 1210 Providence, R. I.
WPTF 680 Raleigh, N. C.
WQAM 560 Miami, Fla.
WQAN 880 Scranton, Pa.
WQBC 1360 Vicksburg, Miss.
WQDM 1370 St. Albans, Vt.
WQDX 1210 Thomasville, Ga.
WRAC 1370 Williamsport, Pa.
WRAW 1310 Reading, Pa.
WRAX 1020 Philadelphia, Pa.
WRBL 1200 Columbus, Ga.
WRBX 1410 Roanoke, Va.
WRC 950 Washington, D. C.
WRDO 1370 Augusta, Me.
WRDW 1500 Augusta, Ga.
WREC 600 Memphis, Tenn.
WREN 1220 Lawrence, Kan.
WRGA 1500 Rome, Ga.
WRHM 1250 Minneapolis, Minn.
WRJN 1370 Racine, Wis.

(Continued on next page)

UNITED STATES BROADCAST STATIONS

Call Kilocycles Location	Call Kilocycles Location	Call Kilocycles Location	Call Kilocycles Location
(Continued from preceding page)			
WROK 1410 Rockford, Ill.	WSEN 1210 Columbus, Ohio	WSYB 1500 Rutland, Vt.	WTJS 1310 Jackson, Tenn.
WROL 1310 Knoxville, Tenn.	WSFA 1410 Montgomery, Ala.	WSYR 570 Syracuse, N. Y.	WTMJ 620 Milwaukee, Wis.
WRR 1280 Dallas, Tex.	WSGN 1310 Birmingham, Ala.	WTAD 1440 Quincy, Ill.	WTNJ 1280 Trenton, N. J.
WRUF 830 Gainesville, Fla.	WSIX 1210 Springfield, Tenn.	WTAG 580 Worcester, Mass.	WTOC 1260 Savannah, Ga.
WRVA 1110 Richmond, Va.	WSJS 1310 Winston-Salem, N. C.	WTAM 1070 Cleveland, Ohio	WTRC 1310 Elkhart, Ind.
WSAI 1330 Cincinnati, Ohio	WSM 650 Nashville, Tenn.	WTAQ 1330 Eau Claire, Wis.	WVFW 1400 Brooklyn, N. Y.
WSAJ 1310 Grove City, Pa.	WSMB 1320 New Orleans, La.	WTAR 780 Norfolk, Va.	WWAE 1200 Hammond, Ind.
WSAN 1440 Allentown, Pa.	WSMK 1380 Dayton, Ohio	WTAW 1120 College St'n, Tex.	WWJ 920 Detroit, Mich.
WSAR 1450 Fall River, Mass.	WSOC 1210 Charlotte, N. C.	WTAX 1210 Springfield, Ill.	WWL 850 New Orleans, La.
WSAZ 1190 Huntington, W. Va.	WSPA 1420 Spartanburg, S. C.	WTBO 1420 Cumberland, Md.	WWNC 570 Asheville, N. C.
WSB 740 Atlanta, Ga.	WSPD 1340 Toledo, Ohio	WTEL 1310 Philadelphia, Pa.	WWRL 1500 Woodside, N. Y.
WSBC 1210 Chicago, Ill.	WSUI 880 Iowa City, Iowa	WTFI 1450 Athens, Ga.	WWSW 1500 Pittsburgh, Pa.
WSBT 1230 South Bend, Ind.	WSUN 620 St. Petersburg, Fla.	WTIC 1040 Hartford, Conn.	WWVA 1160 Wheeling, W. Va.
	WSVS 1370 Buffalo, N. Y.		WXYZ 1240 Detroit, Mich.

CANADIAN BROADCAST STATIONS

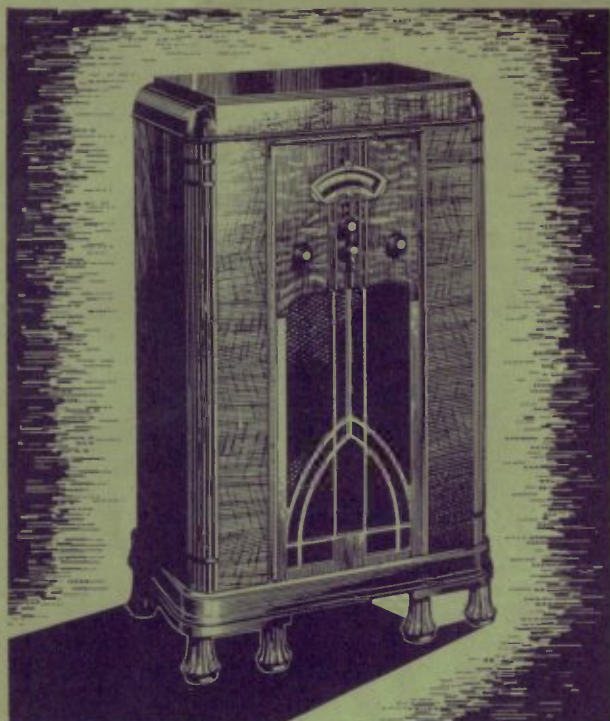
Call Kilocycles Location	Call Kilocycles Location	Call Kilocycles Location	Call Kilocycles Location
CFAC 930 Calgary, Alta.	CHCK 1310 Charlottetown, P. E. I.	CJKL 1310 Kirkland Lk., Ont.	CKLW 840 Windsor, Ont.
CFBO 1210 St. John, N. B.	CHGS 1120 Summerside, P. E. I.	CJLS 1310 Yarmouth, N. S.	CKMC 1210 Cobalt, Ont.
CFCF 600 Montreal, Que.	CHLP 1120 Montreal, Que.	CJOC 840 Lethbridge, Alta.	CKMO 1410 Vancouver, B. C.
CFCN 930 North Bay, Ont.	CHML 1010 Hamilton, Ont.	CJOR 600 Vancouver, B. C.	CKNC 1030 Toronto, Ont.
CFCN 1030 Calgary, Alta.	CHNC 1210 New Carlisle, Que.	CJRC 1390 Winnipeg, Man.	CKOC 1120 Hamilton, Ont.
CFCH 930 North Bay, Ont.	CHNS 1050 Halifax, N. S.	CJRM 540 Moose Jaw, Sask.	CKOV 1210 Kelowna, B. C.
CFCO 600 Chatham, Ont.	CHPR 1370 St. John, N. B.	CKAC 730 Montreal, Que.	CKPC 930 Preston, Ont.
CFCT 1450 Victoria, B. C.	CHRC 580 Quebec, Que.	CKBI 1210 Prince Albert, Sask.	CKPR 930 Fort William, Ont.
CFCY 630 Charlottetown, P. E. I.	CHSJ 1370 St. John, N. B.	CKCD 1010 Vancouver, B. C.	CKTB 1200 St. Catharines, Ont.
CFJC 1310 Kamloops, B. C.	CHWC 1010 Regina, Sask.	CKCH 1210 Hull, Que.	CKUA 580 Edmonton, Alta.
CFLC 930 Prescott, Ont.	CHWK 780 Chilliwack, B. C.	CKCK 1010 Regina, Sask.	CKWX 1010 Vancouver, B. C.
CFNB 1030 Fredericton, N. B.	CJAT 1200 Trail, B. C.	CKCL 580 Toronto, Ont.	CKX 1450 Brandon, Man.
CFPL 730 London, Ont.	CJCA 730 Edmonton, Alta.	CKCO 1010 Ottawa, Ont.	CKY 780 Winnipeg, Man.
CFQC 1230 Saskatoon, Sask.	CJCB 880 Sydney, N. S.	CKCR 1510 Waterloo, Ont.	CRCM 910 Montreal, Que.
CFRB 690 Toronto, Ont.	CJCJ 690 Calgary, Alta.	CKCV 1310 Quebec, Que.	CRCO 880 Ottawa, Ont.
CFRC 1510 Kingston, Ont.	CJCS 780 Sudbury, Ont.	CKFC 1410 Vancouver, B. C.	CRCS 1500 Chicoutimi, Que.
CFTP 1260 Edmonton, Alta.	CJGX 630 Yorkton, Sask.	CKGB 1420 Timmins, Ont.	CRCT 960 Toronto, Ont.
CHAB 1200 Moose Jaw, Sask.		CKIC 1010 Wolfville, N. S.	CRCV 1100 Vancouver, B. C.

MEXICAN BROADCAST STATIONS

Call Kilocycles Location	Call Kilocycles Location	Call Kilocycles Location	Call Kilocycles Location
XEA 1200 Guadalajara, Jal.	XEFA 1180 Mexico City, D. F.	XEMC 750 Merida, Yuc.	XETZ 850 Mexico City
XEAB 1210 Nuevo Laredo, Tams.	XEFB 1420 Monterrey, N. L.	XEMO 860 Tijuana, L. C.	XEU 1200 Vera Cruz, Ver.
XEAC 1295 San Luis Potosi, S. L. P.	XEFC 1310 Merida, Yuc.	XEMZ 1210 Tijuana, L. C.	XEW 890 Mexico City, D. F.
XEAE 980 Tijuana, L. C.	XEFE 1370 Laredo, Tams.	XEN 710 Mexico City, D. F.	XEWZ 1200 Mexico City, D. F.
XEAF 1080 Nogales, Son.	XEFG 1040 Mexico City, D. F.	XENT 1340 Nuevo Laredo, Tams.	XEX 1310 Mexico City, D. F.
XEAI 1420 Mexico City, D. F.	XEFI 720 Chihuahua, Chih.	XEOK 920 Tijuana, B. C.	XEY 1200 Merida, Yuc.
XEAL 660 Mexico City, D. F.	XEFJ 1210 Monterrey, N. L.	XEOX 640 Saltillo, Coah.	XEYZ 780 Mexico City, D. F.
XEAO 660 Mexicali, L. C.	XEFO 940 Mexico City, D. F.	XEP 970 Mexico City, D. F.	XEZ 630 Merida, Yuc.
XEAW 950 Reynosa, Tams.	XEFV 1210 Juarez, Chih.	XEPN 590 Piedras Negras, Coah.	XEZZ 1370 San Luis Potosi
XEAZ 1420 Leon, Guan.	XEFW 1310 Tampico, Tams.	XEPR 740 Mexico City, D. F.	XFA 1310 Agua Caliente
XEB 1010 Mexico City, D. F.	XEFZ 1370 Mexico City, D. F.	XES 970 Tampico, Tams.	XFB 1290 Jalapa, Ver.
XEBE 1280 Agua Caliente, L. C.	XEH 1130 Monterrey, N. L.	XET 690 Monterrey, N. L.	XFC 810 Agua Caliente, Ags.
XEC 1200 Toluca, D. F.	XEI 1310 Morelia, Mch.	XETB 1310 Torreon, Coah.	XFD 1240 Orizaba, Ver.
XECW 1310 Mexico City, D. F.	XEJ 1020 Juarez, Chih.	XETH 1210 Puebla, Pue.	XFG 688.3 Mexico City, D. F.
XED 1160 Guadalajara, Jal.	XEK 1120 Mexico City, D. F.	XETU 890 Pachuca, Hdgo.	XFO 940 Mexico City, D. F.
XEE 1210 Durango, Dgo.	XEL 1370 Saltillo, Coah.	XETW 820 Mexico City, D. F.	XFX 610 Mexico City, D. F.
	XEMA 1200 Tampico, Tams.		

Only

STEWART-WARNER RADIO



The Round-the-World Radio of Proved Performance

An exclusive Stewart-Warner feature, The "Magic Dial" really gives you 4 radios in one. By a simple adjustment you click into place the dial you want to use—one for standard American broadcasts; one for amateur, airplane and police calls; one for ships at sea and South America; one for all other foreign stations. "Geared tuning" makes short-wave selection as easy as local!

There is a Stewart-Warner Round-the-World Radio to fit any purse and to enhance the beauty of any decorative scheme—from smart, compact table models to consoles which are beautiful pieces of furniture as well as a source of endless entertainment, culture, useful information. Compare Stewart-Warner quality and prices with all others—and judge for yourself.



Gives You the Amazing



*Easiest to Tune World Wide Dial on
the Market. Really 4 Radios in One*

● Why gamble when buying a Round-the-World Radio? Stewart-Warner, the pioneers in simplified all-wave radio, offer you in today's "Magic Dial," these benefits of their extra years of experience: (1) Simplicity of clear, accurate tuning—even for the most distant foreign stations—never before possible at *any* price! (2) Remarkably low prices. Stewart-Warner has had time to bring all-wave radio to simplified, economical efficiency.

Foreign Reception Guaranteed

Why limit your pleasure to only American programs, when now you can have entertainment from all over the world—so easily and for so little? But don't expect "Magic Dial" results from anything but the new Stewart-Warner Radio. And don't let the new low prices prejudice you. The best foreign reception possible in your locality is positively guaranteed by Stewart-Warner.

