

# SPEEDX

*the dx radio magazine for active shortwave listeners*

# Montréal



10-11-12

CONVENTION

NOVEMBER 10-12

August 22-23-24

AUGUST 1975

Vol. V - No. VIII



# KEYNOTES



## CONGRATULATIONS TO 4 NEW FULL MEMBERS

TAKAHARU KIYOMIYA  
SAITAMA-KEN, JAPAN

JOHN KUBINSKY  
JOHNSTOWN, PA

GEORGE ZINK  
SO. GATE, CA

MARY SWEANY  
CALISTOGA, CA

Certificates of Full Membership and a copy of the SPEEDX Constitution were mailed to each of the above in July.

---\*\*\*---

## PEANUT POWER PREAKNESS

The starting gate went up about two weeks ago. A few early reports (as of 14 July) indicate intense interest and enthusiasm being generated amongst the brethren and sistern of SPEEDX.

Some of the comments received to date are quite surprising as well as gratifying. For some examples: A dear little lady up north confides "although Ulan-Bator is my favorite tea-time listening, I certainly intend to do some real DXing during the contest period. You will please consider me a serious contender." Right on, Aunt Billie Jean! A venerable east coast DXer, inactive since 1932 lets it be known he has retrieved his Pilot Wasp from the attic and "-will prove much is undiscovered between 14 and 200 meters--"

Heartwarming as the above is, please be reminded that Full Details of this unique and unusual contest will be found in the July issue of SPEEDX bulletin. Plenty of time remains to get into the running; but don't drag your feet (or break a leg) at the turn. LET'S GO!!!

----WATCH FOR GOL. JACK'S REPORT EACH MONTH----

---\*\*\*---

## RADIO CANADA INTERNATIONAL

RGI shows an interest in improving their signal to the United States of N.A. SPEEDXER Don Johnson, Ralph Sanserino and Oliver Ellsworth were invited to the home of a fellow DXer in San Bernardino, Ca on July 7 to meet with Eng. C.E. Jackson, head of engineering service for RGI. During the very interesting afternoon, we monitored several frequencies of the 0100 transmission to North America, which we discussed at length as well as transmitting problems in general. Mr Jackson was concerned with the poor modulation of the signal to this area. The many tapes of transmissions that he is making on his tour of the U.S. will be studied for the purpose of improving their signal.

---

## OUR COVER

The Association of North American Radio Clubs (ANARC) of which SPEEDX is a member will be holding their annual convention in Montreal, Que. Canada, beginning on August 22nd and continuing through August 24th. Co-host of this year's conclave will be Radio Canada International with most of the activities taking place at the Maison du Radio Canada, the RGI headquarters building. Shortwave personalities new and old from their "Radio Canada--- Shortwave Club" series will be there. Will you?

SPEEDX WELCOMES THE FOLLOWING NEW ASSOCIATE MEMBERS

CHARLES HOFFMAN  
MANHEIM, PA

TORSTEN SCHARBERG  
FED REP OF GERMANY

WILLIAM MILLER  
SACRAMENTO, CA

ANDREW MAHONEY  
TERRE HAUTE, IN

JAY SPELL  
LOS ANGELES, CA

MARY SWEANY  
CALISTOGA, CA

FLOYD WALKER  
FORT WAYNE, IN

NORMAN LANGIEY  
ENGLAND

KENNETH ZICHI  
BAY CITY, MI

JEFF BERGER  
AUSTIN, TX

JOSEPH CARMAN  
ALPENA, MI

Welcome to SPEEDX. You have joined a club that has an incentive program, that is, you gain full membership by supporting the various columns and sections, by doing so you help the club and yourself, as a full member does enjoy a few privileges not afforded to associate members. We are looking forward to hearing from you often.

---\*---

NORTHERN CALIFORNIA DXERS

NORCAL DXERS are planning a DX get-together, August 29, through September 1 1975 at the El Rancho Inn, 1100 El Camino Real, Millbrae, Ca. For full details, contact Rick Heald, 17412 Rolando Ave. Castro Valley, Ca 94546.

OHIO WEEKEND DX SEMINAR

DX get-together to be held September 20-21 at the Holiday Inn South, 2455 Springboro Road, Dayton, OH. Registration fee \$3.00. For full details write to; Brandon Lovett, 201 Carrlands Drive, Kettering, OH 45429. Send SASE for reply.

SOUTHERN CALIFORNIA AREA DXERS

SCADS will be holding their next get-together in October. Full details to be published later, however it is suggested that October 18 and 19 be held open. SPEEDX has been advised that the SCADS get-together is the largest in the United States, other than the ANARC conventions.

SPEEDX encourages these get-togethers in various areas, and suggests that they be attended for good fellowship.

---\*---

HOBBY PICTURES FOR COMMUNICATIONS WORLD

SPEEDXER Don Jensen, who is an editor for COMMUNICATION WORLD, is looking for pictures of SPEEDXERS to be published in his column. A black & white or good contrast color snap shot size picture of you and your DX corner would be welcome by Don. A list of gear shown in photo and a brief thumbnail sketch of yourself should be written on the back of the picture. Mail to: Don Jensen, 5204 70th Street, Kenosha, WI 53140.

ENGLISH BROADCASTS ON SHORTWAVE

Glenn Hauser has compiled a comprehensive list that is audible in North America, and is available to anyone for a 4x9½ inch SASE. Order from NASWA Post Office Box 13 Liberty, IN 47353. (Glenn, the 4 page list is great, I have one, Ellsworth)

ITU LIST OF COASTAL STATIONS

William Trubee, Box 1323 Kealahakua, Hawaii 96750 is looking for such a list, please quote price. Bill will answer all replies.

FOR SALE...Don Moore, Box 6 Milesburg, PA 16853 is selling his Barlow--Wadleigh XCR-39. 18 months old in good condition for \$200.00. Send Don a SASE for full details, that I do not have room for here. (OE)

THIS IS A SUMMARY OF A 6 PAGE REPORT SENT TO SPEEDX BOD. IT INCLUDES BOTH SPEEDX & SPEEDXTRA ACCOUNTS FROM 1 JULY 1974 TO 30 JUNE 1975 INCLUSIVE.

BALANCE ON HAND 1 JULY 1974 .....		<u>\$1,508.94</u>
RECEIPTS	PRE-PAID SUBSCRIPTIONS.....	\$2,212.02
	PRE-PAID RENEWALS.....	2,746.50
	SAMPLE SALES.....	179.11
	SUNSET BOOKLET SALES.....	178.23
	RUBBER STAMP SALES.....	119.00
	LOAN REPAYMENT(SPEEDXTRAS).....	211.40
	TOTAL RECEIPTS.....	<u>\$5,646.26</u>
DISBURSEMENTS	BULLETIN PRINTING.....	\$2,335.55
	BULLETIN POSTAGE.....	1,250.58
	HQS POSTAGE.....	394.55
	HQS PRINTING.....	240.55
	SPEEDXGRAM PRINTING.....	92.59
	HQS SUPPLIES.....	167.41
	ADDRESS LABELS.....	47.07
	MISC(ANARC DUES, POB RENT, ETC).....	69.85
	TOTAL DISBURSEMENTS.....	<u>\$4,598.15</u>
BALANCE ON HAND 30 JUNE 1975.....		<u>\$2,557.05</u>

§PEEDXTRAS	FINANCIAL REPORT SUMMARY	§PEEDXTRAS
BALANCE ON HAND 1 JULY 1974.....		<u>\$ 49.14</u>
RECEIPTS	WUDXH SALES.....	\$1,423.44
	CGDXH SALES.....	48.76
	TOTAL RECEIPTS.....	<u>\$1,472.20</u>
DISBURSEMENTS	POSTAGE.....	\$138.67
	MISC PRINTING.....	31.11
	SUPPLIES.....	43.93
	WUDXH EXPENCES.....	170.00
	LOAN REPAYMENT (TO SPEEDX).....	200.00
	MISC.....	38.75
	TOTAL DISBURSEMENTS.....	<u>\$622.46</u>
BALANCE ON HAND 30 JUNE 1975.....		<u>\$898.88</u>

I certify this summary of SPEEDX & SPEEDXTRAS accounts for the period of 1 July 1974 to 30 JUNE 1975 is correct & accurate to the best of my knowledge.

**S P E E D X**  
 P. O. BOX E  
 ELSINORE, CALIFORNIA  
 92330 USA

*Don Johnson*  
 DON JOHNSON  
 TREASURER/BUSINESS MANAGER

**WANTED:**



SPEEDX SEEKS SOME SOUL SEARCHING SNAPS! Send your pic of you & your shack to HQS. B/W or good contrast color pic. Pics will be printed as space permits.....



DAVE THORNE of Santa Ana, California. Dave is an ex-BIG WHEEL of SPEEDX. Here he is tuning his SW4A.....



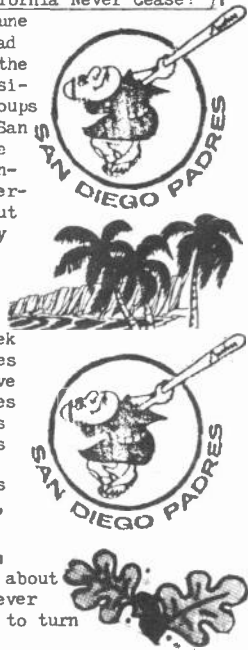
# DX MONTAGE

RESEARCH/COMPILATION/REDACTION by A. W. BRGOKS

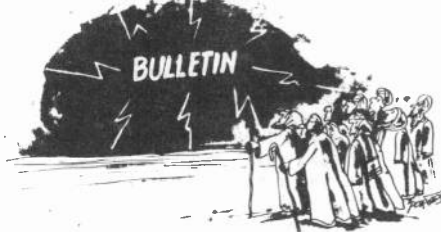
74 Massachusetts Road

Oakdale, Connecticut 06370

PUT YOUR HANDS ON THE RADIO (or "Will The Wonders Of Southern California Never Cease?"); During a recent transcontinental return flight it was my good fortune to be assigned a seat next to a gentleman of advancing years who had been involved in amateur radio operations since the early part of the century. A native New Englander now a seventeen-year San Diego resident, the affable gent was an active member of several amateur groups including the Quarter Century Wireless Association...of which the San Diego Chapter was responsible for an interesting display of antique radio equipment which I had viewed with pleasure during my just concluded visit. I can heartily recommend a visit for anyone either permanently or temporarily in the San Diego area. The extensive layout can be seen at the San Diego Aerospace Museum in Balboa Park and my accidental airborne acquaintance, amateur operator Romeo Bilodeau (K6FM), was among those instrumental in arranging for this antique wireless and radio display...all making for a very pleasant return trip...and following immediately on the heels of yet another radio oriented coincidence. While driving in San Diego earlier in the week with the car radio tuned to a local broadcast band station my senses were jolted by the announcer's voice saying, "Don Johnson...you have six minutes to call our station to win tickets to a San Diego Padres game". I began wondering abstractly if the erstwhile SPEEDX Business Manager some miles up the coast was listening. My brief reverie was terminated by the self-same voice proclaiming that "Don Johnson of Elsinore" had called and had won the tickets. Yes, SPEEDXers, it was OUR Don Johnson...a fact confirmed by a personal verification card, not from the station, but from the winner himself. That's real DX?



WE INTERRUPT THIS PROGRAM: The illustration from a recent TV Guide was provided by Tim Eagen. Tell me...is this how HCJB does it?

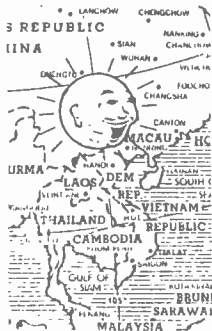


### ACORNS FROM OAKDALE;

...The nicest thing about newspapers is you never have to ask someone to turn down the volume...



EXPATRIOT DX: "...his prize possession is a SW radio he uses daily to tune in news from America" states a Newsweek excerpt sent by Jim Meehan. Who is this new devotee to SWling? Ex-militant Eldridge Cleaver, now living in Paris...who is quoted as saying that "if it came to a choice between a woman and a radio, I'd choose the radio. It brings the outside world in". Not the choice I'd make!



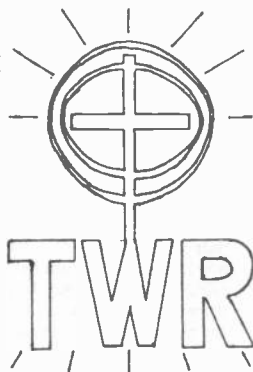
YOU'RE NOT LIKELY TO HEAR IT ON RADIODIFFUSION NATIONALE KHMERE, BUT ...recently several persons died and about twenty others were arrested in the Cambodian capital of Phnom-Penh. Not unusual in view of the strife-torn Indo-Chinese republic today? Ah, but wait.....these misfortunes were not the result of battle. The wounds and incarcerations occurred when some Cambodian soldiers fired their guns against evil spirits that were causing an eclipse of the moon. Unlike some superstitious Occidentals who believe this celestial phenomenon is caused by the obscuration of the light of a satellite by the intervention of its primary planet between it and the sun, some superstitious Cambodians believe a lunar eclipse is caused by the spirit of a monkey eating the moon...and, further, that only noise can stop the process by frightening away the spirit. Actually, it wasn't a monkey. The truth of the matter is that the moon was being devoured by B.A.D.Guy Chris Lobdell who mistook the lunar globe for one of Kathleen Testa's famous meatballs! And even severe heterodyne doesn't scare him away!



# DX MONTAGE

...IF YOU MUST BLAME SOMEONE FOR THIS CONTINUATION, MAKE IT ALAN W. BROOKS!

HABA ADAI...CONSTRUCTION COMMENCES FOR TRANS WORLD RADIO ON GUAM:  
 TWR announced on May 12th that final clearance had been received for establishing two radio stations on Guam. Therefore, it came as no surprise that on June 1st the ground was broken for the two new stations, KTWG and KTRW. There will be one MW and two SW transmitters...the shortwave coverage will be directed to China, southeast Asia, Indonesia, eastern Russia, and Australia. The two Guam outlets will be the first TWR installations on American soil. It was as early as 1963 that TWR attempted to gain a site in Puerto Rico, but were thwarted by an FCC freeze on new stations. In 1970 a local minister helped secure property in Merizo in the southern part of the island near the foot of Mount Schroeder for the shortwave site. In August of 1973, of course, the FCC freeze was lifted. The TWR application for a shortwave station on Guam was then updated and in January Of 1974 a construction permit was granted subject to the clearance from the military authorities on Guam. The actual construction on TWR-Guam has begun as an access road was opened to the MW site on Nimitz Hill and foundations have been laid for the tower and transmitter building...



ЧЕТВЕРТ 23 МАЯ 1974 ГОДА

**CLASSIFIED  
 HELP WANTED**

**Грузинский Отдел  
 ГОЛОСА АМЕРИКИ  
 ИЩЕТ ЛИЦ**

свободно говорящих  
 ПО-ГРУЗИНСКИ  
 и обладающих хорошим  
 знанием английского языка,  
 на должности  
 РЕДАКТОРОВ,  
 ПИСАТЕЛЕЙ  
 и  
 ДИКТОРОВ  
 в грузинском отделе  
 Голоса Америки  
 в Вашингтоне.  
 Оклады — начиная  
 от 9,969 долларов в год —  
 зависят от квалификации.  
 Заинтересованных лиц  
 просит посылать  
 автобиографии с указанием  
 трудового опыта  
 по следующему адресу:

Miss JANET DAVIS,  
 VOICE OF AMERICA,  
 Personnel, Room G-312  
 HEW-S Building,  
 Washington, D. C. 20547  
 EQUAL OPPORTUNITY  
 EMPLOYER

**THE VOICE OF THE O-E-O?:**

Marc Fisher, a sometime student of the Russian language and a full time M.A.D. Man, forwarded the adjacent Equal Employment ad as published in New Russian Word, a daily New York City paper for Russian immigrants...the general tenor of the VOA ad seems to translate as follows: "Georgian Division...Voice of America...Faces Wanted....Freedom Speaks In Georgian...Applicant must have excellent knowledge of English...For positions of Editor, Writer, and Director in the Georgian Division of the Voice of America in Washington". As it continues this ad also includes mention of salary...approximating \$9,969...plus some other information, among which appears the line stating that ye olde VOA is, indeed, an Equal Opportunity Employer. A word of caution here, however. I believe you will determine that the Georgian they are seeking is not that currently spoken by former SPEEDX-SWB editor Carroll Patterson...

**TODAY TV FILM...TOMORROW QSL CARDS!:**

Indian political troubles moved just a bit closer to the DXer as outlined in a UPI release forwarded from San Bernardino by Lou Leistner...

**Fire in India 'sabotage'**

NEW DELHI (UPI) — Fire suspected of being "an act of sabotage" by opponents of Prime Minister Indira Gandhi gutted the television film library in the All-India Radio building in downtown New Delhi Saturday.

The opposition has accused the government-owned All-India Radio of being biased in favor of the embattled Mrs. Gandhi.

**AS RADIO FREE BROACKTON CHANGES HANDS:**

Bob Wirrell sends along an item from the Brockton Enterprise relating an incident involving a talkative, quite profane thief who apparently stole a two-way radio. It began when the local police dispatcher heard an unfamiliar voice calling to the station over the air. Mixed with the initial call were several colorful expletives. For over an hour the anonymous thief constantly broke into radio communications with taunts and brief radio messages. Eventually the thief announced that he had tired of the game and had sold the radio. Shortly thereafter a different voice was heard with an offer to sell the police the portable and than fell silent for the rest of the night. We understand, however, that Frank Testa did QSL one of the transmissions and invited the perpetrator to the next B.A.D. meeting to explain this new field. I say, Mark Scannell, where were you on the evening of...???



# HAP PENINGS

## HANDICAPPED AID PROGRAM

TED POLING - HAP DIRECTOR  
P. O. BOX 163  
MT STERLING, IL 62353 USA

SUPPORT WORLD DX HANDICAPPED AID CAMPAIGN



We hope you have found our series on the overseas HAPs informative and interesting. We used it to show the American SWL the extent and variety of services offered to Hapies overseas.

We don't want to beat you over the head about it, but it is probably worth repeating that the new HAP director is Ted Poling, and that HAPs new headquarters are now at P.O.Box 163, Mt. Sterling, IL 62353.

I don't contemplate any major changes in policies, services or projects. As always, HAP could use assistants for various purposes—typing, writing, duplicating, distributing, taping. There's no pay, but one does gain the satisfaction of helping others.

Volunteerism is a great American tradition; if you can volunteer some service to HAP, we can continue to be a unique and worthwhile service to the hobby and to the handicapped person who is or wants to be, a successful SWL.

The individual SWL can also help HAP by spreading the word about us among your friends and among the institutions and organizations which serve handicapped persons.

The sales of RCI interval signal tapes are going fairly well. Tapes will be sold at the 1975 ANARC convention in Montreal in August. Since no postage cost will be involved, the tapes will be sold for \$3.00 each, cash and carry.

Two additional tapes will be available soon: one of European interval signals and identifications, and one for the rest of the world. These tapes are now in the preparation stage, and should be available soon. Watch for further details.

There are now more than eighty Hapies, about evenly divided between the United States and the rest of the world. This does not include persons being served by other HAP organizations.

Ted Hindle, chairman of HAP-UK, has undertaken to distribute tapes in his part of the world. This was made necessary by the fact that it costs nearly as much as a tape to buy an overseas money order. He will group individual orders into one group order, thus spreading the cost over a number of tapes.

We recently made Hapies of the students of a class for the educable mentally handicapped class in Colorado.

Their teacher feels that SW may contain possibilities for enabling his class of 11 to 18 year olds to broaden their horizons.

He had been using his own receiver in the class room with fair results.

He now wants to apply for a grant to help purchase equipment and supplies, and HAP has tried to help by citing references to the educational uses of short-wave which appeared in hobby publications.

After investigating, it was found that short-wave has already been used as an aid in the teaching of foreign languages on the secondary and higher education levels. This meant that there was at least a small body of works he could use as citations in his grant application.

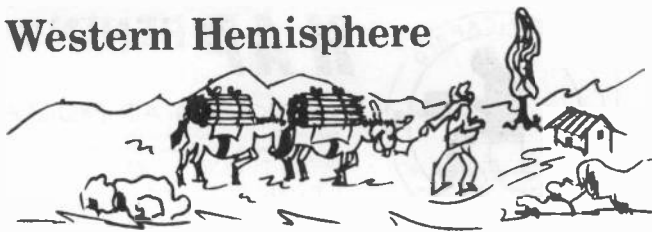
As far as we know, this use of short-wave is unique.

And HAP is proud to be part of it.

We want to thank Ian MacFarland of RCSI/C for his help with HAP forms and publicity.

73 Ted Poling

# SWBC DX - Western Hemisphere



— EDITOR —

E.J. "Jim" Whitehead  
177 Pine Ridge Road  
Reading, Mass. 01867

## REFRAN

"No hay rosas sin espinas"

## ZIPPITY DOO DAH

Last month Jack Jones reported a mysterious station identifying itself as "Radio Swan" and using Brer Rabbit's happy tune, Zippity Doo Dah as its theme song. Although many DXers were inclined to dismiss Jack's report as little more than a fairy tale, Jack stuck to his radio like Brer Rabbit stuck to Tar Baby and solved the mystery by deftly piecing together the various clues in a way that would have made even the great Sherlock Holmes jealous. As a result Jack now has that "wonderful feelin" that comes from having been the first to log a new station and is the hands down winner of this month's gold star.

As Jack sees it Radio Swan could well be "another Clarín or Reloj". It is located in San Pedro Sula, a rapidly growing city in northwest Honduras, and operates on both 1100 khz medium wave and 6185 khz in the 49 meter band. Jack reports hearing frequent "Radio Swan de Honduras" announcements and advises he believes the station, at least for now, is operating around the clock.

## NOW'S THE TIME

Yep, summer is here! But don't forget that now is the time to get yourself ready for the upcoming DX season. Take a minute and check the supports and connections on your antenna system for corrosion and wear. Then, check your ground and, if you haven't already, install a lightning arrester. Summer is also a good time to get your receiver to a qualified technician for a check and realignment. Remember to take a little time now to insure you don't miss a minute of this winter's DX.

It is also time to get to the reports before my ribbon melts in this heat. So, with the usual reminder that all times are GMT, that all dates are in the month/day format, and that the SIO code is used to report reception conditions, its off to the races.

## ARGENTINA

- 5985 1020 LRS2 R. Splendid:w/OM tlc and a bit of march music (312 6/12 Laves-TX)
- 6180 1100 LRA34 R. Nacional. Mendoza:w/LRA ID, 8 a.m. TC, nx relayed from B.A. (--4 6/16 Hauser-OK)
- 9690 0630 LRA32 R.A.E.:w/EE cmntry on music, ID (434 6/14 Uerlings-WA) (444 7/8 0500 w/"INFORMA RADIO NACIONAL" nx pgm, non-stop mx, IDs as "R. Nacional, Buenos Aires" Redman-IL) (443 0300 6/19 Miklejewski-MN) (444 0300 7/10 Kannry-IL) (333 0842 6/29 Junqua-JAPAN) (433 0440 6/19 Cleveland-CA) (222 0445 7/3 MacCoy-AZ)
- 11710 2330 LRA35 R.A.E.:w/"MEN OF THE AMERICAS" pgm featuring a tlc abt a Brazilian composer (454 6/13 Vecchiola-PA)
- 11880 0323 LRS R. Splendid:w/nx in SS, ID @ 0329 (232 6/20 Cleveland-CA)
- 15290 0157 LRU R. El Mundo:w/ SS broadcast of fight direct from Madison Square Garden (353 7/1 Rodriguez-PR) (232 0130 7/1 Zilmer-WI) (454 1643 6/29 Karki-ID)
- 15435 1403 LRA33 R. Nacional:w/ "BIBLIOTECA R. NACIONAL" pgm (252 7/3 Bixby-CA) (444 1500 6/21 w/"AQUI DEPORTES" spts pgm Rodriguez-PR)



**BOLIVIA**

6035 0944 CP92 R. Panamericana:w/mx and ads, much QRM, few IDs (122  
6/20 Laves-TX)

**BRAZIL**

- 3245 0110 ZYF225 R. Clube de Varginha:w/OM & YL  
chatter (222 7/1 Miller-OH)
- 4755 0855 ZYF23 R. Dif. do Maranhão:w/Brazilian  
mx, OM t1k (433 6/24 Redman-IL)
- 4795 2346 PRI4 R. Tabajara de Paraíba:w/futebol  
OM ancr in loud cries of anguish,  
guess his team must have been behind  
(222 6/23 Miller-OH)
- 4855 0830 PRC5 R. Clube do Pará:w/U.S. and L.A.  
pop mx,ads (343 6/25 Laves-TX)
- 4985 2330 ZYX2 R. Brasil Central:w/singing ID, OM  
and YL anmts, probably ads, pop mx  
(343 6/16 Vecchiola-PA)
- 5017v 0130 ?? R. Negra (?)w/ pop mx pgm called  
"DISCOTECA DO POVO", ads,TC, singing ID seems to be "R. Negra,  
R. Negra" Confusing as R. Cultura de Cuiabá reported here.  
May be new slogan or name (343 7/4,5,10,14 etc. Whitehead-MA)
- 5045 0100 ZYE73 Emisoras Presidente Prudente:w/Brazilian pop mx,ads, ID  
as above @ 0100 (343 7/2 Whitehead-MA)
- 6015 0200 ZYB85 R. Clube de Pernambuco:w/ coverage of sports event (333  
7/2 Beal-WA)(322 0005 7/3 Rodriguez-PR)
- 6175 0757 ZYY24 R. Guarani:w/music,ads,ID @ 0801 (443 6/22 Rodriguez-PR)
- 9675 1002 ZYT29 R. Diário da Manhã:w/ "COKE" ads, frequent IDs (342 6/19  
Beal-WA)
- 9695 0005 ZYB61 R. Rio Mar:w/tlks,ID, QRM de R. Sweden (222 7/3 Laves-TX)
- 9705 1000 ZY224 R. Mauá:w/ nx in PP (353 6/11 Jones-MS)
- 11735 0335 ZYW28 R. Clube de Goiânia:w/tlk mostly, s/off @ 0400 although  
WRTH lists 0500 (343 7/2 Beal-WA)
- 11785 0107 ZYU61 R. Guaiaba:w/variety of mx,"Chop Sticks" on piano @ 0131  
followed ID @ 0130 (222 6/16 Beal-WA)
- 11925 0135 ZYR78 R. Bandeirantes:w/mixture of Brazilian and U.S. pop music  
ID @ 0153 and again @ 0202 (333 6/17 Beal-WA)
- 15245 2115 PRL8 R. Nacional Brasília:w/EE introductions of Brazilian hits  
to 2128 when "SOMETHING TO THINK ABOUT" pgm, QRM de Zaire  
(353 6/9 Earhart-PA)(232 2105 7/4 Bixby-CA)(444 1950 6/18  
Bodell-OR)(434 2115 6/10 Famularo-NJ)(454 2137 7/7 Smith-TN)  
(343 2100 7/6 Sanserino-CA)
- 15445 0046 PRL8 R. Nacional Brasília:w/PP ID and nice South American mx  
(444 6/22 Scannell-MA)(454 2350 6/10 Earhart-PA)
- 17815 2215 ZYE419 R. Cultura, São Paulo:w/tlk, probably nx (333 7/4 Zilmer-  
WI)

**CANADA**

- 5960 0410 CBC Northern Svc.:w/sports report and big band mx in broadcast  
// 9625. Announced as 250 kw both frequencies via Sackville  
(--? 6/21 Talbot-WI)(554 0215 6/18 Marti-CA)
- 6005 1045 CFCX, Montreal:w/weather report,LJ show (422 6/24 Zilmer-WI)
- 6070 1410 CFRX, Toronto:w/"Garden-matic" ad,tlk show on gardening,ID  
(353 6/14 Famularo-NJ)(433 0645 6/13 Redman-IL)
- 6085 0105 R. Canada Intl.w/nx,"THE WORLD THIS WEEK" pgm,ID, "LISTENERS'  
MAILBAG", then RCSWC pgm (454 6/14 Famularo-NJ)(434 0103  
6/15 Yajko-PA)
- 6160 2030 CKZN, St. Johns:w/local broadcast, ID,mx,nx (333 6/27 Uerlings-  
WA) Believe you mean CKZU, Vancouver don't you???
- 9625 0300 CBC Northern Svc.:w/ country music pgm (353 6/26 Karki-ID)(444  
1420 6/12 Famularo-NJ)
- 9650 0155 R. Canada Intl.w/"THE WORLD IN BRIEF" pgm,s/off @ 0157 (333  
7/8 Bowen-N.S.)(444 0106 6/15 Yajko-PA)(544 0122 6/22  
Deaton-GA)
- 9655 0400 R. Canada Intl.:w/nx,spts,wx (444 6/18 Henning-CA)(333 0420  
6/16 MacCoy-AZ)
- 9740 0100 R. Canada Intl.:w/ pgm // 9650 and which should not be here  
but was on two occasions where they mix with R. Prague on  
the same freq. Sked lists only 11940, 9650, and 6085 (332  
7/10 & 7/13 Brooks-CT)



CANADA (cont.)

- 11720 1355 CBC Northern Svc.:w/discussion on buying a car, ID, nx, vocal mx (454 6/25 Karki-ID)(--3 1257 6/15 w/unexpected multilingual ID at end of "MUSIC FROM OTHER CONTINENTS" pgm Hauser-OK) (444 1900 6/15 Jacobson-IL)
- 11825 1145 R. Canada Intl.:w/radio play to 1215, into FF pgm (555 6/29 Talbot-WI)
- 11855 1808 R. Canada Intl.:w/"THE WORLD THIS WEEK" (444 6/21 Yajko-PA)
- 15325 1715 R. Canada Intl.:w/s/on into mx, then into GG nx beamed to Africa (444 7/6 Scannell-WA)(444 1800 6/2 w/EE nx Bob & Rita Kelly-TN)(544,1800,7/5 Deaton-GA)(423 1835 7/2 Uerlings-WA)(433 1807 6/21 Yajko-PA)(544 1632 6/15 Famularo-NJ)
- 17820 1635 CBC Armed Forces Svc.:w/OM & YL in FF tlk, music pgm (242 6/7 Earhart-PA)(353 2102 7/6 w/EE nx, ID giving freqs in 19,25, and 31 m.b.s only Jones-MS)(434 1804 6/16 Yajko-PA)

CHILE

- 6135 1116 CE613 R. Univ. de Concepción:w/light, middle of the road mx, Bonanza theme hrd often (233 7/2 Laves-TX)
- 9565 0212 CE956 R. Nacional de Chile:w/EE tlk on Latin America in "Voice of Chile" pgm // 15150 (423 7/7 Famularo-NJ) (343 0115 7/7 Sanserino-CA)
- 9590 1732 CE959 R. Presidente Balmaceda:w/interviews at sports type event followed by parade type mx, crowd noise in background, few ads (343 6/18 Miklejewski-MN)(253 1732 6/27 Hauser-OK)(433 0113 7/1 Rodriguez-PR)
- 9750 1700 CE975 R. Minería:w/ads and SS anmts @ 1630, 1658 ads to "R. Minería de Santiago" ID, 3 vibraphone tones. "RADIONOTICIAS" @ 1700 (--4 7/6 Hauser-OK)(433 1045 6/30 Zilmer-WI)
- 11810 1213 CE1181 R. Nacional de Chile:w/tlk on far south of Chile, oyster production, sheep production, mineral production, etc. (222 6/28 Miklejewski-MN)(442 1339 6/19 Cleveland-CA)
- 15150 0220 CE1515 R. Nacional de Chile:w/"VOICE OF CHILE" pgm incl. tlk by Chilean ambassador to OAS, ID (242 6/17 White-FL)(253 0118 6/15 Marti-CA)

COLOMBIA

- 4755 0332 HJKC Emisora Nuevo Mundo:w/LA mx pgm (331 6/23 Cleveland-CA)
- 4785 0659 HJLW Ecos del Combeima:w/frantic ancr, wild pop mx, many IDs as "Super Radio" (332, 6/19 Miklejewski-MN)(433 0905 6/24 Zilmer-WI)(323 0902 6/27 Bodell-OR)
- 4855 0320 HJFV R. Neiva:w/TENTATIVE reception of possible sports event coverage, into mx @ 0327. Unable to decipher ID (331 6/23 Cleveland-CA) Bill, R. Clube do Pará now active here so at the time you mention it could be either although I have not heard R. Neiva in some time.
- 4885 0415 HJG Ondas del Meta:w/LA mx pgm, IDs (433 6/15 Rodriguez-PR)
- 4945 0545 HJDH R. Colosal:w/Mexican & tango mx, several IDs (433 7/3 Redman-IL)(332 0712 6/19 Miklejewski-MN)(332 0900 6/6 Tannenwald-NY)
- 4955 0051 HJCC R. Nacional:w/tlk by OM & YL, ID (333 6/28 Yajko-PA)(432 0240 6/23 Cleveland-CA)(332 0210 6/19 Famularo-NJ)
- 4965 0630 HJAE R. Santa Fé:w/tango mx, IDs, some rTTY QRM (333 6/13 Redman-IL)
- 5010 2335 HJOX R. Surcolombiana:w/music, ads, OM ancr (242 6/11 Famularo-NJ)
- 5035 0353 HJIC LV del Cagueta:w/tlk including "RCN LA RADIO DEPORTIVA DE COLOMBIA" network release, ID @ 0359 w/ freq. info, s/off (443 6/15 Rodriguez-PR)(242 0320 6/26 Laves-TX)
- 5075 0052 HJGC R. Sutatenza:w/"NUESTROS COMPOSITORES" pgm, full ID @ 0059, "Alka Seltzer" ad, nx by OM (433 7/3 Miklejewski-MN)(444 0930 6/24 Redman-IL)(433 0045 6/12 Yajko-PA)(444 0143 7/10 Vecchiola-PA)(443 0300 6/20 Cleveland-CA)(333 0900 6/20 Tannenwald-NY)
- 5095 0137 HJGG R. Sutatenza:w/ GG comentary, German folk songs (444 7/10 Vecchiola-PA)
- 5950 0445 HJNX R. Super de Medellín:w/ Colombian music pgm, IDs (322 7/9 Cleveland-CA)(422 0610 6/21 Redman-IL)
- 5990 0504 HJ?? LV de los Centauros:w/end LA mx pgm, IDs giving freqs and off w/ NA (433 6/15 Rodriguez-PR)(222 0450 6/26 Laves-TX)



COLOMBIA (cont.)

- 6030 0010 HJZJ R. Nacional:w/"Lección 39 de español" educational pgm  
(433 7/4 Rodriguez-PR)(232 0246 7/10 Jones-MS)
- 6043 0200 HJLB LV del Tolima:w/0200 sports,0230 NOTICIERO TODELAR, 0255  
ID. Apparently moved up slightly to escape DW and RBI on  
its nominal 6040 khz (--3 7/9 Hauser-OK)
- 6065 0900 HJAX R. Super:w/ Colombian music pgm,ads,IDs  
(333 6/9 Tannenwald-NY)(444 0737 6/22  
Bodell-OR)(433 0555 6/21 Redman-IL)
- 6075 0210 HJID R. Sutatenza:w/tlks, orchestra mx,vocals  
time pips & ID @ 0230 into nx (343 6/22  
Thompson-NM)
- 6085 1105 HJTF Ondas del Darién:w/ fanfare,"Buenos dias, Colombia", ID  
into LA mx pgm (343 6/29 Miller-OH)
- 6095 0625 HJIW LV del Centro:w/ Colombian music, RCN and local IDs (443  
7/1 Laves-TX)(444 0507 6/15 Rodriguez-PR)
- 6125 0033 HJKE R. Continental:w/TODELAR nx, then local ID (444 7/4  
Rodriguez-PR)(212 1052 6/20 Laves-TX)(121 0143 7/9 Famularo-  
NJ)
- 6150 0432 HJ?? LV del Huila:w/nx, ID (422 7/9 Cleveland-CA)
- 6160 0700 HJKJ Emisora Nueva Granada:w/Colombian music,RCN network slogans  
IDs etc. (433 6/13 Redman-IL)



COSTA RICA

- 4832 0643 TIHB R. Capital:w/LA mx, ID as "R. Capital, en la corazon de  
Costa Rica" (343 6/19 Miklejewski-MN)(333 0127 6/29 Yajko-PA)  
(333 0045 7/6 Famularo-NJ)(333 0830 6/24 Tannenwald-NY)
- 6150 1020 TIRS R. Atenea:w/clear and slow IDs "R. Atenea de Costa Rica"  
which also give frequency and address (434 7/2 Laves-TX)  
(433 1024 7/8 Jones-MS)(433 1045 7/3 Zilmer-WI)
- 9645 1140 TIFC Faro del Caribe:w/ bilingual sermon given in alternating  
English and Spanish sentences (322 6/29 Miller-OH)(232 1050  
7/3 Miklejewski-MN)

CUBA

- 11725 0104 R. Habana Cuba:w/world nx in EE (544 7/8 Quinn-NY)(533 0100  
7/6 Deaton-GA)
- 11760 2055 R. Habana Cuba:w/EE Svc. here briefly ex-11855 trying to avoid  
interference there from RCI. However returned to 11855 on  
6/30 apparently because of QRM from VOA Tangier in its  
European target area. (--4 6/29 Hauser-OK)(454 ??? 6/26  
Karki-ID)(444 0333 7/6 Henning-CA)
- 11855 2050 R. Habana Cuba:w/mx pgm,"PHILATELY IN CUBA" pgm,"VOICE OF  
VIETNAM" pgm etc. (333 7/6 Brooks-CT)(--2 1950 6/29 Hauser-  
OK)(422 2010 6/21 Zilmer-WI)
- 11930 0200 R. Habana Cuba:w/EE tlks,mx,"VOICE OF VIETNAM" pgm (444 7/7  
Famularo-NJ)(433 0140 7/8 Bowen-N.S.)

DOMINICAN REPUBLIC

- 3204 0015 HIAU LV de la Libertad:w/pretty LA ballads,mentions of Dom. Rep.  
(322 7/1 Miller-OH)(323 0234 6/17 Baron-PA)
- 4850 0415 HIRL R. Clarín:w/merengue mx,IDs, heavy QRN (422 6/26 Redman-IL)  
(332 0415 7/9 Cleveland-CA)(312 0135 6/29 Yajko-PA)
- 4882 0900 HJJP R. Comercial:w/mx,ads,IDs (322 6/27 Tannenwald-NY)
- 4929v 0920 HIBE R. Mil:w/ many IDs,much music. Appears to be slightly  
below nominal 4930 khz (354 6/30 Laves-TX)(433 0915 6/24  
Redman-IL)(342 0250 6/23 Cleveland-CA)
- 9505 2220 HISD R. Televisión Dominicana:w/pgm of continuous LA mx,ID @  
2230 (333 7/7 Bowen-N.S.)(433 2015 6/15 Redman-IL)(222 2345  
6/13 Beal-WA)(322 2103 7/14 Baron-PA)
- 11700 1849 HIRL R. Clarín:w/ID,ads,mx (433 6/26 Yajko-PA)

ECUADOR

- 3985 1025 HGER5 Escuelas Radiofónicas Populares:w/SS tlk including some  
local words (333 6/27 Bodell-OR)
- 4679 0545 HCWE1 R. Nacional Espejo:w/choral andean mx,ads, off suddenly  
@ 0600 (333 6/24 Redman-IL)(433 0408 7/9 Cleveland-CA)(333  
0157 6/11 Famularo-NJ)

615  
Klcs.

20.000  
WATS

# EMISORAS GRAN COLOMBIA

¡ PRIMERA EN SINTONIA !

4910 Kcs. ONDA CORTA

105,3 Mgs. F. M.

ESTUDIOS: Calle Guayaquil 1524 Edificio Pardo - Telfs. 211670-213113-212383 - Casilla Postal 2246 - Quito-Ecuador

- 4752 0248 HCER5 R. Centinela del Sur: w/some pop music, ID (333 7/9 Laves-TX)(343 0037 6/12 Pamularo-NJ)
- 4826 0721 HCAV3 R. Luz y Vida: w/Ecuadorian mx, ID (233 6/25 Laves-TX)
- 5025 0327 HCOB5 R. Splendit: w/romantic music, ads (323 6/15 Rodriguez-PR)
- 5970 0232 HCJB LV de los Andes: w/"DX PARTY LINE" pgm (253 6/15 Marti-CA)
- 6075 0815 HCJB LV de los Andes: w/"BACK TO THE BIBLE" pgm beamed to Australia/New Zealand. Into RR @ 0830 (343 6/24 Junqua-JAPAN) (343 1020 6/14 Earhart-PA)
- 9560 0430 HCJB LV de los Andes: w/"BLESS THIS HOUSE" pgm (322 7/3 MacCoy-AZ)
- 9745 2200 HCJB LV de los Andes: w/sign on of SS Svc.. Mixing with R. Moscow SS Svc. on the same freq. (332 7/10 Brooks-CT)
- 11900 2303 HCJB LV de los Andes: w/religious pgmning // 15270 in SS noted here interferring with R. RSA (???) 7/2 Hauser-OK)
- 11910 0319 HCJB LV de los Andes: w/ID, "BAPTIST HOUR" (554 6/15 Smith-FL) (434 0121 6/18 Yajko-PA)(333 0202 7/8 Bowen-N.S.)
- 15115 1600 HCJB LV de los Andes: w/"MORNING IN THE MOUNTAINS" pgm, ID (554 6/20 Smith-FL)
- 15265 2115 HCJB LV de los Andes: w/hymns, organ mx (333 6/18 Thompson-NM)
- 15270 2145 HCJB LV de los Andes: w/classical mx, SS ID & time signal (343 6/13; Earhart-PA)
- 15410 1405 HCJB LV de los Andes: w/new freq. ex 15405 and // 15265. Music pgm in SS Svc. Mixing severely with VOA (--2 6/19 Hauser-OK)
- 17715 1940 HCJB LV de los Andes: w/"DX PARTY LINE" release to Europe (423 6/16 Yajko-PA)(332 2100 7/6 Jones-MS)

## GRENADA

- 9550 1602 R. Grenada: w/ news of Grenada, Dominica and other nearby islands (343 7/6 White-FL)

## GUATEMALA

- 3380 0128 TGCH R. Chortis: w/ SS anmts, slow dreamy LA mx (332 7/1 Miller-OH)
- 4825 0128 TGNM R. Mam: w/ "EL MUNDO EN MARCHA" pgm followed by "LA PALABRA DE DIOS" a brief religious message into religious drama to 0205 sign off. (333 7/8 Whitehead-MA)

## HAITI

- 3345 0951 4VSO R. 4VEH: w/ Creole religious tlks, organ music in background (454 6/16 White-FL)
- 9770 1250 4VEH R. 4VEH: w/ EE religious vocals (333 7/7 Bowen-N.S.)
- 11835 1230 4VEJ R. 4VEH: w/ "Light & Life Hour" (333 6/29 Talbot-WI)(434 1333 6/22 Yajko-PA)(454 1240 6/26 Bob & Rita Kelly-TN)

## HONDURAS

- 4820 0408 HRVC LV Evangelica: w/nx in EE (354 6/22 Smith-TN)(343 0345 6/3 Bob & Rita Kelly-TN)
- 4920 0243 HRPL3 R. Progreso: w/many IDs, ads, pop LA music (242 6/17 Meehan-CA)(322 0310 6/24 Redman-IL)(323 0239 6/12 Rodriguez-PR)(332 0300 6/23 Cleveland-CA)(433 0412 6/16 Miklejewski-MN)
- 5960 1050 HRRH LV de Occidente: w/slow classical mx, ID just before VOA wiped them out @ 1100 (222 7/2 Laves-TX)
- 6185 0841 HR?? R. Swan: w/ light and pop inst. mx, IDs. Under VOA carrier from 0848 on. Blasted by "Yankee Doodle" @ 0859. Noted 7/11 w/"BUENOS DIAS AMIGOS" pgm of U.S. and LA pop mx, TCs and ID as "Radio Swan de Honduras". Theme tune is "Zippity Doo Dah" (322 6/11, 7/6, 7/7, & 7/11 Jones-MS)

MARTINIQUE

5995 1010 O.R.T.F. Fort de France: w/ FF pop mx pgm, anmts (423 6/14  
White-FL)(444 2310 7/9 Vecchiola-PA)(222 0145 7/3 Laves-TX)

MEXICO

- 6115 1525 XEUDS R. Universidad de Sonora: w/ orchestra music, both  
classical and semi-classical, SS anmts (444 7/3 Thompson-  
NM)(322 0240 6/17 Meehan-CA)
- 6160 0625 XEWW LV de América Latina: w/nx, commentary by YL (422 6/17  
Redman-IL)
- 9609 0131 XEYU R. Universidad de México: w/U.S. pop mx, ID @ 0133, ads  
(222 6/20 Rodriguez-PR) (???) 1500 6/29 Hauser-OK)
- 9705 2300 XERM X, México: w/music, multilingual anmts mentioning special  
broadcast on 15385 and request reports (444 6/29 Henning-CA)  
(333 2100 6/26 Uerlings-WA)
- 15125 0000 XERM R, México: w/delightful radio version of "CINDERELLA"  
(454 7/14 Whitehead-MA)(444 0230 6/18 Redman-IL)(333 0245  
6/18 Talbot-WI)(343 2215 7/2 Beal-WA)(444 1805 6/19  
Rodriguez-PR)(444 2026 6/29 Miller-OH)(433 2145 6/18 Henning-  
CA)(444 1850 6/17 Thompson-NM)(443 2327 6/25 Smith-FL)  
(444 2218 7/4 Quinn-NY)
- 15160 1410 XEWW LV de América Latina:w/Banco de México ads, nx til 1414,  
many ads (252 7/3 Bixby-CA)
- 15300v 2200 XERM X R, México: w/frequency varying between 15300 and 15320 khz.  
Noted with distorted audio with coverage of UN sponsored Intl.  
Women's Year Conference. Presume this for coverage of  
conference as not heard since (442 6/21 Zilmer-WI)
- 15385 2130 XERM X R, México: w/mixed bag of mx, mostly ranchera mx, ID and  
multilingual request for reports to P.O. Box 20-620, México  
D.F. México. (322 7/4 Miklejewski-MN)(--2 2004 6/29 Hauser-  
OK)(433 0315 6/26 Redman-IL)

NETHERLANDS ANTILLES

- 6020 0055 R. Nederland, Bonaire: w/ SS tlk, opera selection, vocals  
(444 6/22 Thompson-NM)
- 6165 0200 R. Nederland, Bonaire: w/"HAPPY STATION" pgm (544 6/23 Deaton-GA)
- 9590 0238 R. Nederland, Bonaire: w/SS Svc. incl. orchestra mx, tlks, etc.  
(343 7/4 Thompson-NM)
- 9760 0330 Trans World Radio, Bonaire: w/ IS, ID in EE, into Rumanian pgm  
of religious tlk, hymns (343 7/4 Thompson-NM)(454 0515,7/8  
w/ end of bcst in AA, ID Karki-ID)
- 11785 0220 Trans World Radio, Bonaire: w/ hymns, ID in SS (343 7/4 Thompson)
- 11815 1102 Trans World Radio, Bonaire: w/mx, interview with young boy with  
cancer (333 6/14 Earhart-PA)
- 15245 2140 Trans World Radio, Bonaire: w/ Dutch Svc. tlks, ringing of ships  
bell prior to program (433 6/15 Jacobson-IL)
- 15350 0115 Trans World Radio, Bonaire: w/ID at end of PP pgm into GG Svc.  
(453 7/10 Jones-MS)

PARAGUAY

6025 1028 ZPA1 R. Nacional de Paraguay: w/long SS tlks, many IDs QRM de  
AFRTS (333 6/12 Laves-TX)(222 1035 6/27 Bodell-OR)

PERU

- 4935 0204 OAX9E R. Tropical: w/talk and music, severe het observed (222  
7/9 Laves-TX)
- 5040 0405 OCY4Y R. Libertad de Junfn: w/beautiful andean music, SS anmts  
(352 6/15 Rodriguez-PR)
- 6045 1106 OCY4H R. Santa Rosa: w/ music pgm, ID (212 7/2 Laves-TX)
- 9504 1203 OAX8F R. Loreto: w/OM DJ with LA mx pgm. Much tlk between  
numbers, ID @ 1231. One number in PP played "for our  
Brazilian friends" (222 6/30 Miklejewski-MN)

**RADIO 50KW**  
**AMERICA**

MARIANO CARRANZA 431  
TELEFONO: 710920  
TELEX: 3540217  
CASILLA: 119:  
LIMA - PERU

**Compañía**  
**Peruana de**  
**Radiodifusión S. A.**

PERU (cont.)

- 9515 0056 OAX4J R, La Crónica: w/ IDs incl. freq., traditional Spanish mx  
TCs, ads (333 6/19 Bixby-CA)  
9562 1620 OAX4R R, Nacional, Lima: w/ tlk of Peru, LA mx, ads (343, 7/6  
White-FL)(242 1140 6/30 Miller-OH)

TURKS & CAICOS

- 4788 2306 VSI8 Radio VSI8: w/anmts of local events (333 6/13 White-FL)

UNITED STATES OF AMERICA

- 6155 0350 WYFR Family Radio: w/"UNSHACKLED" pgm (454 6/27 Karki-ID)  
9565 1528 V.O.A.: w/nx, mx, Nat King Cole vocals, s/off 1600 (222 6/27  
Smith-FL)  
9615 0920 KGEI LV de la Amistad: w/nx, time, ID, mx (333 6/16 Smith-FL)  
9715 0119 WYFR Family Radio: w/SS rel pgm (343 7/10 Brooks-CT)  
9725 0100 V.O.A.: w/ SS Svc s/on, ID, tlk, mx (444 7/10 Brooks-CT)  
9755 0700 A.F.R.T.S.: w/ nx, tlk beamed to Caribbean (333 6/28 Uerlings-WA)  
11720 0107 WYFR Family Radio: w/"THE SOUND OF A NEW LIFE" pgm (444 7/8  
Quinn-NY)  
11805 1710 WYFR Family Radio: w/religious mx, sermons (333 7/7 Bowen-N.S.)  
11905 0120 KGEI LV de la Amistad: w/SS religious tlk (434 7/8 Quinn-NY)  
15110 2045 WYFR Family Radio: w/pgm in special EE (???) 6/29 Hauser-OK)  
15185 2212 WINB World Inter-National Broadcasters: w/"IN DEFENSE OF TRUTH"  
pgm (544 7/5 Deaton-GA)(322 2130 7/14 Baron-PA)  
15330 1606 A.F.R.T.S.: w/fill mx not // Greenville 15430.(???) 7/8 Hauser-OK)  
21485 1705 V.O.A., Bethany: w/nx, correspondents repts (343 6/17 Thompson-NM)  
21500 1600 V.O.A., Greenville: w/EE ID into nx in language unidentified  
(444 6/17 Thompson-NM)  
21540 1715 V.O.A., Bethany: w/Swahili nx, orch mx (444 6/20 Thompson-NM)

VENEZUELA

- 3245 1023 YVKT R, Libertador: w/Venezuelan mx, IDs (232 7/8 Laves-TX)(323  
0220 6/13 w/nx @ 0231, lt. mx Famularo-NJ)  
3365 0344 YVQP R, Puerto La Cruz: w/ads, LA mx, ID (332 6/29 Miller-OH)  
4770 0133 YVNW R, Bolívar: w/ID, LA pop mx (333 6/29 Yajko-PA)  
4800 0235 YVMO R, Lara: w/ pop mx, SS anmts, IDs (343 7/8 Scannell-MA)  
4850 0313 YV?? R, Capital: w/U.S. pops, ID (443 7/6 Rodriguez-PR)  
4860 0310 YVQE R, Maracaibo: w/LA music, ads, ID (332 6/20 Cleveland-CA)  
4890 0330 YVKB Rdf, Venezuela: w/pop mx, anmts as "La Estación de  
Alegria" (422 6/24 Redman-IL)(332 0308 6/23 Cleveland-CA)  
(333 0053 6/28 Yajko-PA)(454 0130 6/22 Vecchiola-PA)(252  
0337 6/20 Smith-TN)  
4900 0330 YVNK R, Juventud: w/ID, rock mx pgm (242 6/12 Meehan-CA)(422  
0300 7/1 Redman-IL)(432 0313 6/23 Cleveland-CA)  
4910 1019 YVNI R, Carora: w/ soft mx, ID heavy QRM (222 6/30 Laves-TX)  
4920 0940 YVKR R, Caracas: w/ anmts, Venezuelan mx, QRM de ABC Brisbane  
(323 6/16 Bodell-OR)  
4930 0241 YVMI LV de la Fé: w/"HORA REGIONAL" pgm incl. vocal mx (444  
6/12 Rodriguez-PR)  
4940 0246 YVPA R, Yaracuy: w/LA mx, ads, ID (321 6/23 Cleveland-CA)(433  
0055 6/29 Yajko-PA)  
4950 0120 YVNM R, Coro: w/ LA music, many IDs (323 6/29 Yajko-PA)  
4970 0006 YVLR R, Rumbos: w/ mx, TC, bug spray, coffee & whiskey comls.  
(343 6/11 Famularo-NJ)(422 0345 6/26 Redman-IL)(333 0052  
6/29 Yajko-PA)(444 0002 6/17 Vecchiola-PA)(444 0130 7/3  
Thompson-NM)(333 0900 6/24 Tannenwald-NY)(333 0320 6/18  
Smith-FL)  
4980 0125 YVOC Ecos del Torbes: w/ singing IDs, nx @ 0130, comls.(333  
7/3 Miklejewski-MN)(343 0349 6/23 Cleveland-CA)(422 0355  
6/26 Redman-IL)(444 0116 6/29 Yajko-PA)(454 0109 6/27  
Vecchiola-PA)(454 0350 7/3 Quinn-NY)  
4990 0226 YVMQ R, Barquisimeto: w/mx, ID, ads (343 6/18 Smith-FL)(444 0148  
6/29 Vecchiola-PA)(343 0355 6/23 Cleveland-CA)(434 0111  
6/29 Yajko-PA)  
5030 0230 YVMK R, Reloj Continente: w/gong, ID, classical mx (Sunday)  
(343 7/9 Earhart-PA)(343 0105 7/10 Vecchiola-PA)  
6070 1010 YVSR R, San Sebastián: w/ID, orchestral mx, vocals (211 7/8  
Beal-WA)(322 0956 7/10 Jones-MS)

# SWBC DX

## EUROPE / AFRICA



**TRANS  
WORLD  
RADIO**



Robert Butterfield  
P.O. Box 398  
Belmont, Massachusetts  
02178 U.S.A.

Deadline: 15th  
Times & Dates: GMT  
Frequencies: kHz

### -Africa-

#### ALGERIA

7195 2356 Radiodiffusion-Télévision Algérienne: Ar tlk, mx (343 6/13 White-FL)  
15160 0812 RTVA: Ar singing (322 6/27 Bodell-OR);(323 2140 6/22 Vokes-TX)

#### ANGOLA

9660 1545 A Voz de Angola: Port w/ vocal and instr mx (333 6/26 Bixby-CA)

#### ASCENSION ISLAND

15195 1005 VOA via Atlantic Relay: Port tlk, under NHK (222 6/27 Bodell-OR)  
15260 2320 BBC, Atlantic Relay: Eng DX progr (343 6/18 White-FL)  
15400 0803 BBC, Atlantic Relay: Eng nx (222 6/29 Zink-CA)

#### CANARY ISLANDS

11800 0009 R. Nacional de Espana, Tenerife: Sp tlk (232 6/18 Laves-TX); (333 0010 6/14 Vokes-TX);(444 0201 7/9 Famularo-NJ);(332 0400 6/20 Cleveland-CA)  
15365 0046 RNE: Sp w/ mx (433 6/30 Zink-CA);(343 0225 6/27 Zimarowski-MA);(333 0500\* 7/8 Crews-FL);(343 2345 6/14 Earhart-PA)

#### CENTRAL AFRICAN REPUBLIC

7220 0620 Radiodiffusion Nationale Centrafricaine: U/lang w/ afro mx, drums, hvy QRN (242 6/16 Vokes-TX);(121 0626 Laves-TX)

#### CHAD

4304.5 2116 Radiodiffusion Nationale Tchadienne: Fr tlk, mx, IDs (222 6/16 Baron-PA);(252 2145 6/22 Smith-MA);(353 2245 7/5 Brooks-CT) 2300 s/off

#### CONGO, PEOPLE'S REPUBLIC OF THE

4765 0440 Radiodiffusion Television Congolaise: Fr? w/ chorus mx to 0500, drums and nx (343 6/22 Vokes-TX);(332 0535 6/27 Zimarowski-MA)  
9611t 1617 RTVC: U/lang w/ tlk, nx @ 1630, afro mx @ 1640, more tlk, no ID hrd (333 6/18 Junqua-JAPAN) listed 9610. rfb.

#### EGYPT, ARAB REPUBLIC OF

9475 0215 R. Cairo: Eng w/ Eng nx to NA (545 6/9 Jacobson-IL);(443 0220 6/24 Jones-MS);(433 0220 6/15 Yajko-PA);(444 0307 6/19 Svinicki-MI);(332 0320 6/20 Cleveland-CA)  
9805 2211 R. Cairo: Eng tlks on Mid-East, ID (444 6/19 Famularo-NJ); (555 2235 6/29 Talbot-WI)

ETHIOPIA

II955 1340 ETLF: Eng ID @ 1345 into progr in Telugu (333 6/19 Thompson-NM)  
 15250 0525 ETLF: U/lang w/ mx, Eng ID (322 6/26 Uerlings-WA);(343 0530 7/6 Beal-WA);(322 0532 7/2 Zink-CA)

GABON

4777 2120 Radiodiffusion Television Gabonaise: Fr w/ afro mx, tlk (232 6/23 Junqua-JAPAN);(332 2334 6/23 Miller-OH);(343 2245 7/9 Vecchiola-PA);(323 2310 6/13 White-FL)

GHANA

4980 2140 Ghana Broadcasting Corporation, Ejura: Eng rel progr, nx, hi-lite mx, s/off w/ anthem 2305 (352 7/2 Brooks-CT);(222 0612 6/27 Eichenhorn-MI) Last logging tent. rfb.  
 4915 2245 GBC, Accra: Vern/Eng w/ nx, s/off 2305 (353 7/5 Brooks-CT);(343 2225 6/9 Earhart-PA);(332 0555 in Eng 6/27 Zimarowski-MA);(232 0600 6/27 Eichenhorn-MI) Sorry, out of order. rfb.  
 6130t 0620 R. Ghana (GBC): Eng w/ rock mx, time per 6/75 FRENDX (322 6/20 Meehan-CA)  
 11850 2015 R. Ghana: Eng nx (433 6/23 Pimblett-ALBERTA);(322 2035 6/24 Bodell-OR);(343 2102 6/24 White-FL)

GUINEA-BISSAU

5040 0615 R. Bissau: Port w/ mx, instrumentals, ancmt by OM (343 6/21 Earhart-PA)

IVORY COAST

4940t 2235 Radiodiffusion Television Ivoirienne: Fr w/ commtry, some mx (443 7/9 Vecchiola-PA);(333 0610 6/8 Earhart-PA);(242 0612 TENT 6/20 Meehan-CA)  
 7215 0620 RTVI: Fr w/ drums, tlk (352 6/16 Vokes-TX)  
 11920 2104 RTVI: Fr w/ speech (333 6/27 Bodell-OR);(323 2201 7/2 White-FL);(423 1915 in Eng 6/16 Yajko-PA)

LIBERIA

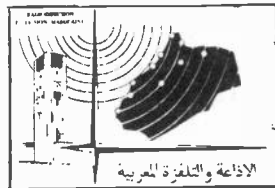
II950 1740 ELWA: Fr tlk, rel songs, ID @ 1800 (333 7/3 Bodell-OR); (343 2004 in Ibo 7/5 White-FL)

MALAGASY REPUBLIC

9585nI 2120\* H. Nederland, Talata: Eng progr to Eur from 2000-2120, ex 11730

MALI

4786t 2239 R. Mali: Fr w/ commtry (232 6/28 Vecchiola-PA)

MOROCCO

5960 2255 Radiodiffusion Television Marocaine: Ar w/ chants, extended commtry (433 7/9 Vecchiola-PA)  
 6170 2156 RTVM: Ar songs, nx, more mx (333 6/11 Famularo-NJ)  
 9615 2135 RTVM: Ar w/ string mx, tlk (433 6/7 Smith-MA);(353 0130 6/23 Bixby-CA);(444 2120 6/26 White-FL)

11735t 1400 RTVM: Ar w/ chants, ancmts (422 7/7 Scannell-MA) Yes it is Mark. rfb.

15205 1804 VOA, Tangler: Eng nx (222 6/17 Baron-PA)

MOZAMBIQUE

II780 0640 R. Clube de Mocambique: Eng "IM Radio" w/ ID, comml, mx (333 7/8 Crews-FL)  
 11820 1430 RCM:Port w/ independence celebrations (343 6/26 Junqua-JAPAN)

NIGERIA

7275 0605 Voice of Nigeria (NBC): Eng w/ nx, ID as "This news is coming to you from the Voice of Nigeria, Lagos" (322 6/20 Meehan-CA);(-4 0615 7/5 Lance-AZ);(444 0615 6/26 Groce-CA);(333 0545 7/6 Crews-FL)



AUSTRIA

6155 0131 Osterreichischer Rundfunk: Eng w/ nx, comtry // 9770 (333 7/7 Zimarowski-MA); (333 6/15 Yajko-PA)  
 9770 \*0130 ORF: Eng w/ nx, comtry (433 6/24 Zilmer-WI);(533 0130 6/24 Deaton-GA);(434 0135 6/18 Pamularo-NJ);(333 0136 7/9 Pimblett-ALBERTA);(422 \*0330 6/29 Groce-CA)  
 15335 1830 ORF: Eng "Report from Austria" (322 6/29 Zilmer-WI)

BELGIUM

6080 \*0040 Radiodiffusion Television Belge: Eng w/ tourism tlk (322 6/16 Yajko-PA);(444 0053 6/28 White-FL)  
 9730 2320 RTB: IS from 2320-2330. Port from 2330-2345, Sp from 2345-0000, Dutch from 0000-0020, Fr from 0020-0040, and Eng from 0040-0100 (433 7/9 Brooks-CT)  
 9755 \*2255 RTB: Eng w/ Belgium Speaking to NA (433 6/24 Zilmer-WI); (432 7/9 Brooks-CT)  
 11855 \*2255 RTB: Eng "Belgium Speaking, hvy QRM from WYFR same fqy (422 6/21 Zilmer-WI)

BULGARIA

9700 2130 R. Sofia: Eng ID, nx (433 6/28 Bob & Rita Kelly-TN);(434 0012 6/12 Yajko-PA);(322 0045 6/16 Jacobson-IL);(432 0415 6/28 Groce-CA)

CZECHOSLOVAKIA

7345 \*0100 R. Prague: Eng s/on, nx (433 7/6 Deaton-GA);(444 0335 6/22 Vecchiola-PA)  
 9540 0122 R. Prague: Eng w/ comtry (434 6/26 Yajko-PA);(342 0130 6/26 Groce-CA);(554 0340 7/5 Marti-CA)  
 9740 \*0100 R. Prague: Eng prgr (332 7/7 Brooks-CT)  
 11990 0349 R. Prague: Eng mx, s/off w/ fqys @ 0355 (332 6/20 Cleveland-CA)

DENMARK

15165 \*0942 R. Denmark: Eng ID, IS, Danish prgr (333 6/27 Bodell-OR)  
 WRTH lists 5 min prgr to Greenland at 0945-0950 wkdays. rfb.

FINLAND

15185 \*1400 R. Finland: Eng w/ IS, ID, ancmt of writers strike, mx (343 6/22 Smith-MA);(544 1400 6/22 Scannell-MA);(444 1400 6/15 Pamularo-NJ);(433 2300 6/22 Zilmer-WI);(434 2328 6/28 Groce-CA)

FRANCE

5955 1626 R. France International: Fr w/ intvw (444 6/19 Mulcahy-ENGLAND)  
 11705 0600 RFI: Fr w/ tlk, mx (353 7/4 Earhart-PA)  
 15200 1700 RFI: Eng "Paris Calling Africa" // 15300 (444) 15360 (332) (444 7/12 Brooks-CT);(333 1705 7/13 Baron-PA);(444 7/5 Deaton-GA)  
 15360 1710 RFI: Eng nx to Afr (343 6/28 Earhart-PA)  
 15425 \*1700 RFI: Eng "Paris Calling Africa" w/ nx (333 6/20 Pimblett-ALBERTA)  
 17720 \*1700 RFI: Eng "Paris Calling Africa" // 15200 (333) 15210 (333) 15300 (322) 15360 (311) 15425 (322) 17820 (311) (332 6/28 Zilmer-WI);(222 1515 6/25 Bixby-CA)  
 17775 1710 RFI: Eng mx, tlk (343 6/19 Yajko-PA)  
 17850 1003 RFI: Fr nx (343 7/4 White-FL);(333 1712 in Eng 6/19 Yajko-PA)  
 21620 1733 RFI: Eng tlk, Fr lang prgr, mx, nx (353 7/4 Earhart-PA)

GERMANY, DEMOCRATIC REPUBLIC OF

11840 0330 R. Berlin International: Eng w/ IS, ID // 11890 (343 7/7 Sanserino-CA);(212 0340 7/6 Beal-WA);(433 0355 6/28 Zink-CA);(555 0400 7/5 Talbot-WI);(444 0408 7/6 Pimblett-ALBERTA); (343 0410 6/23 Laves-TX)  
 15125 1200 RBI: Eng nx, comtry, mx // 15320 (321) (332 6/29 Zilmer-WI)

RWANDA  
7225 0434 Deutsche Welle, Kigali: Eng w/ nx (333 6/22 Zimarowski-MA)

SENEGAL  
11895 2003 Radiodiffusion du Senegal: Fr nx, ID, mx (323 6/14 Baron-PA)

SOUTH AFRICA  
3250 0140 SABC: Eng w/ orch mx, vocals, ads, tlk (333 6/28 Thompson-NM);(322 0350 in Afrikaans 6/27 Zimarowski-MA)  
3980 0202 SABC: Eng w/ Amer pop mx, jazz also // 3250 (432 6/30 Miller-OH);(322 0225 7/8 Zimarowski-MA):(333 0250 6/28 Thompson-NM)  
4875 0238 SABC: Eng w/ tlk, R. RSA sked begins 0256, not hrd this date (332 6/9 Earhart-PA)  
0310 R. RSA: Eng ID, orch mx, time pips, nx (333 6/25 Thompson-NM);(442 0335 6/23 Cleveland-GA);(353 2125 7/2 Brooks-CT)  
5980 0407 R. RSA: Eng tlk, ID (432 6/20 Cleveland-GA);(443 0420 6/27 Eichenhorn-MI);(444 2255 7/9 Vecchiola-PA)  
7285 0600 SABC: Eng tlk, ID, local time (343 6/28 Groce-CA)  
9695 \*2229 R. RSA: Eng s/on, nx (444 6/17 Deaton-GA)  
11900 2315 R. RSA: Eng nx, s/off @ 2320 (454 6/13 Vecchiola-PA);  
11950 0600 R. RSA: Eng nx (434 6/11 Montgomery-IL)  
15175 1550 R. RSA: Eng ID, nx, orch mx (333 6/21 Thompson-NM)  
15220 0635 R. RSA: Eng mx, progr summary, time, nx (333 6/16 Smith-FL); (332 1548 6/21 Eichenhorn-MI)

SPANISH SAHARA  
11805t 1801 R. Sahara: Ar songs, over mod, tlk, past normal s/off, wYFR QRM (322 7/3 Bodell-OR)

SUDAN  
11835 1520 R. Omdurman: Ar w/ mx, tlk, ID @ 1528 and 1547 (343+ 6/24 Junqua-JAPAN)

SWAZILAND  
6155 0715 Swazi Music Radio: Eng ads, rock mx (212 6/27 Bodell-OR)

TOGO  
5047 0551 Radiodiffusion du Togo: Fr w/ afro, French, and Amer song, tent. (242 6/20 Meehan-CA);(343 2245 in U/lang 6/28 Vecchiola-PA)



TUNISIA  
11970 1800 Radiodiffusion Television Tunisienne: Ar w/ chants, tlks, flute/string mx (222 6/22 Smith-MA) // 15225 (433 2140 6/21 Vokes-TX)  
15225 2045 RTVT: Ar singing (344 6/27 Bodell-OR);(343 1559 6/28 Junqua-JAPAN);(111 1800 6/22 Smith-MA)

UPPER VOLTA  
4815 2355 Radiodiffusion Television Voltaique: Fr w/ drums @ 2359, ID as "Ici Ouagadougou", anthem and off COOL (232 7/9 White-FL);(342 0538 6/18 Vokes-TX)

ZAIRE  
15245 0610 La Voix du Zaire: Fr w/ afro mx, ID (232 6/14 Zimarowski-MA)  
15350 1935 La Voix du Zaire: Fr tlk // 15245 (434 6/25 Bodell-OR);(322 1915 6/22 Eichenhorn-MI)

-Europe-

ALBANIA  
6200 0148 R. Tirana: Eng tlks (444 6/18 Famularo-NJ)  
7300 0145 R. Tirana: Eng political tlks (333 0145 6/22 Yajko-PA)  
9750 0003 R. Tirana: Eng nx (422 6/27 Miller-Ch)  
9780 \*0300 R. Peking via Tirana: Eng w/ IS, s/on, nx, tlks (433 6/16 Famularo-NJ)

GERMANY, FEDERAL REPUBLIC OF

6040 0134 Deutsche Welle: Eng nx (444 6/18 Yajko-PA)  
 1724 VOA, Munich: Eng w/ "World Report", Press review (443 6/19  
 Mulcahy-ENGLAND) Typing this on vacation, so I don't have  
 my VOA sked handy, new fqy or what? rfb.  
 7285 0200 DW: Eng comment to Asia (433 6/24 Zilmer-WI)  
 9545 0530 DW: Eng nx, ID @ 0535, commtry (333 7/8 Crews-FL);(333 0545  
 6/23 Eichenhorn-MI)  
 9565 \*0130 DW: Eng nx, spts (534 7/6 Talbot-WI);(443 0130 6/23 Zilmer-  
 WI) // 9690 9745 11865  
 9745 0130 DW: Eng nx to NA, 0150\* (444 7/10 Brooks-CT)  
 15150 1430 DW: Eng nx to Afr (433 6/28 Zilmer-WI)  
 15275 0558 DW: Ger w/ IS @ 0558, 0559 ID "... iber die Sender in der  
 Bundesrepublik Deutschland", reported at times as Malta,  
 BBC MS shows FRG, 0600 w/ Eng opening to Afr (--- 6/27  
 Hauser-OK);(232 \*0930 Eng to Asia 6/17 Eichenhorn-MI)

GREAT BRITAIN

9410 0300 BBC: Eng w/ nx, tlk, rock mx (333 6/21 Thompson-NM);(555  
 0315 6/9 Jacobson-IL);(433 0430 6/24 McCoy-AZ);(433 1905  
 7/2 Uerlings-WA)  
 11750 1120 BBC: Eng tlk (343 6/19 Capili-HI);(433 0300 7/6 Henning-CA)  
 11780 0429\* BBC: Eng w/ nx summary, off to NA (354 6/25 Karki-ID)  
 12095 1345 BBC: Eng w/ "Listener's Choice" (344 6/22 Scannell-WA)  
 15295 1615 BBC: Eng w/ tennis, unlisted fqy // 15070 15365 (433 6/28  
 Zilmer-WI)  
 15335 \*1100 BBC: Eng nx to Caribbean, unlisted fqy // 15310 15070 15400  
 15435 (232 6/21 Zilmer-WI)

GREECE

7270 0259 VOA, Kavala: Eng ID, w/ QTH, nx (444 6/25 White-FL)  
 15345t 1558 Ethnikon Idhryma Radiophonias Tileorasseos (EIRT): Grk ancmt,  
 IS, Albanian s/on? (232 6/19 Bodell-OR) Most likely, fits  
 WRTH. rfb.

HOLLAND

6165 0155 R. Nederland: Eng nx, DX Jukebox (444 6/20 Jacobson-IL);  
 (544 0225 6/19 Famularo-NJ);(343 0507 6/15 Capili-HI);(454  
 0513 6/27 Karki-ID)  
 9715 0552 R. Nederland: Eng w/ mx requests (333 6/22 Capili-HI);(454  
 0903 6/15 Smith-FL);(433 2130 6/16 Deaton-GA)  
 11825 1030 R. Nederland: Eng "What's New", 1050\* (342 6/25 Zilmer-WI);  
 (353 1035 6/14 Earhart-PA)

HUNGARY

6000 0305 R. Budapest: Eng nx, mx (332 6/17 Eichenhorn-MI)  
 7220 \*0200 R. Budapest: Eng s/on, nx (444 6/28 Vecchiola-PA);(444 0200  
 6/25 Eichenhorn-MI)  
 9655 2138 R. Budapest: Eng tlk, ID, mx (433 6/18 Famularo-NJ)  
 11910 2130 R. Budapest: Eng nx // 9655 (433) (422 6/24 Zilmer-WI)  
 15160 1035 R. Budapest: Eng ID, nx (322 7/2 White-FL)  
 15220x 0319 R. Budapest: Eng (?) w/ prgr finally audible, 0359 IS, 17710  
 not hrd, In recent DX prgr R. Budapest stated these channels  
 were 1 or 2 kw xmtrs for 'modulation experiments'. (142 6/28  
 Hauser-OK)

ITALY

9575 \*0100 Radiotelevisione Italiana: Eng nx, lite mx (-- 6/27 Talbot-  
 WI);(433 0119 7/9 Pimblett-ALBERTA);(433 0116 6/15 Yajko-PA)  
 11810 \*0100 RAI: Eng to NA, TWR QRM 11815 (212 7/3 Uerlings-WA);(444  
 0100 7/5 Thompson-NM);(444 0100 6/19 Deaton-GA);(433 0100  
 7/1 White-FL);(444 0102 6/21 Pimblett-ALBERTA);(433 0102  
 7/5 Zink-CA);(433 0112 6/27 Yajko-PA)

LUXEMBOURG

6090 0030 R. Luxembourg: Eng rock mx, dj "John Henry here in the  
 Heart of Europe" (343 7/6 Famularo-NJ);(343 1135 in Fr  
 7/2 Miller-OR)

MALTA

6100 0129 Deutsche Welle, Cyclops: Eng w/ IS, nx, commtry, ID, TC, fqy  
 (333 7/6 Thompson-NM)  
 11865 0130 DW: Eng nx (444 7/10 Scott-FL)

MONACO

- 7105 \*0620 Trans World Radio: Eng w/ IS, s/on (322 6/27 Zimarowski-MA);(322 0635 6/27 Smith-MA)  
 11760 1520 TWR: Russ w/ rel prgr, ID as "Govorit Monte Karlo" (343 6/27 Junqua-JAPAN)  
 11815 0052 TWR: Eng w/ "DX Special" (434 6/12 Yajko-PA)

NORWAY

- 9645 0200 R. Norway: Eng w/ "News and Views" (422 7/7 Deaton-GA);(322 0216 7/7 Jones-MS);(444 0400 6/22 Henning-CA);(353 0415 7/7 Sanserino-CA);(423 0415 6/23 Uerlings-WA)  
 11850 0700 R. Norway: Norwegian w/ nx, Eng ID (333 6/24 Tomori-HI)  
 11860 0430 R. Norway: Eng w/ comtry, ID @ 0440 (333 7/6 Crews-FL);(332 0415 7/6 Beal-WA) //s ancd 9645 11860 11870  
 11870nf 0520 R. Norway: Norw w/ tlk, ID (353 7/4 Earhart-PA)  
 15175 1614 R. Norway: Eng nx, ID, mx (434 6/15 Famularo-NJ);(333 0010 6/26 Jacobson-IL);(243 0000 7/7 Laves-TX);(333 1620 6/15 Svinicki-MI);(444 1620 6/15 Eichenhorn-MI)

POLAND

- 9540 2030 Polish R.: Eng w/ piano IS, ID, nx, comtry, "Poland Today", sked and address as P.O. Box 46, Warsaw, also at 1600, 1700, 1830 (433 6/25 Smith-MA)  
 11815 \*0200 Polish R.: Eng prgr, Polish ID, Eng nx (322 6/24 Pimblett-ALBERTA);(333 0200 6/25 Vokes-TX);(222 0215 6/25 Laves-TX);(454 0220 5/26 White-FL);(432 0259 7/3 Bixby-CA);(423 0305 6/25 Bodell-OR)  
 11835 0305 Polish R.: Eng nx, comtry, mx (212 6/27 Talbot-WI)  
 11840 0220 Polish R.: Eng w/ Polish songs, ID @ 0233, Polish at 0235, Eng broadcasts 0200 & 0300 (ancd in EST) (333 6/29 Earhart-PA);(432 0315 ?? Zilmer-WI) // 11815 (422) 15120 (222)

PORTUGAL

- 6025 0235 R. Portugal: Eng tlk on Mozambique (434 6/26 Groce-CA);(444 0235 6/24 White-FL)  
 11815L 1049 R. Free Europe, Lisbon: Hungarian w/ tlk, 1059 chimes (353 6/14 Earhart-PA)  
 15170 1440 R. Free Europe, Lisbon?: Hungarian w/ pop mx, ID as "Europa Radio" (343 7/12 Brooks-CT)

ROMANIA

- 9570 0127 R. Bucharest: Eng s/on, nx (433 6/18 Deaton-GA);(433 0145 6/23 Zilmer-WI);(333 0403 6/25 Laves-TX);(433 0215 6/15 Yajko-PA)  
 9690 2111 R. Bucharest: Eng nx, ID (444 6/12 Famularo-NJ);(333 2115 6/27 Van Himbergen-MI)

SPAIN

- 9630 0102 R. Nacional de Espana: Sp w/ prgr of Sp mx (433 7/9 Pimblett-ALBERTA);(433 0500 6/24 MacCoy-AZ)  
 11880nf 0103 RNE: Sp mx prgr // 9520, site unknown (--4 6/22 Hauser-OK);(544 0115 6/27 Miller-OH);(343 2300 6/16 Beal-WA)  
 11900 0446 RNE: Sp w/ nx, s/off 0452 (454 6/26 Karki-ID)  
 11925 0230 RNE: Eng nx, ID, TC, fqys, nx (453 6/10 Smith-FL)  
 11975 0100 RNE: Eng s/on, nx (434 0100 6/29 Groce-CA) Glenn Hauser notes that after further checks RNE is still being used and is a subsidiary of Radio-Television Espanola, which is used frequently also. rfb.

SWEDEN

- 9695 \*0230 R. Sweden: Eng nx (433 6/28 Zilmer-WI);(333 0230 ??? Henning-CA);(343 0230 6/28 Groce-CA);(433 0232 7/6 Zink-CA);(333 0235 6/27 Zimarowski-MA);(333 0235 6/25 Eichenhorn-MI);(433 0256\* 7/6 Jones-MS)  
 11705 \*0230 R. Sweden: Eng nx, "Panorama" // 9695 (222) (444 7/4 Mullen-MT);(444 0230 7/10 Kannry-NY);(444 0230 7/6 Henning-CA);(434 0235 6/23 Jacobson-IL);(433 0239 7/4 Zink-CA);(433 0245 6/10 Svinicki-MI);(333\*2300 6/25 Groce-CA);(444 2300 6/21 Scannell-MA);(343 2300 7/8 Beal-WA);(555 2300 6/11 Smith-FL);(433 2306 6/22 Jones-MS);(433 2314 6/26 Pimblett-ALBERTA);(444 2328 6/23 Eichenhorn-MI)



radio  
SWEDEN

## SWITZERLAND

9535 2100 SBC: Eng to Africa w/ IS, TC, ID, sked, nx (454 6/25 Smith-MA); (434 \*0145 6/23 Yajko-PA)  
 9590 2100 SBC: Eng "Dateline", nx, comtry (322 7/3 Van Himbergen-MI)  
 11715 0145 SBC: Eng nx, jazzmx (433 6/23 Zink-CA); (333 0145 6/29 Groce-CA); (444 0145 7/6 Wilson-IL); (444 0140 7/5 Thompson-NM); (443 0155 6/23 Zilmer-WI); (353 0430 7/7 Sanserino-CA); (333 0430 7/8 Crews-FL); (433 0432 6/20 Pimblett-ALBERTA); (454 0433 6/25 Karki-ID); (333 0450 6/21 Cleveland-CA)

## UKRAINIAN SSR

11715 0008 R. Moscow, Vinnitsa: Eng nx (534 6/15 Baron-PA)

## USSR

6040 2205 R. Moscow: Eng nx, comtry // 9710 (342 7/8 Brooks-CT)  
 9530 0218 R. Moscow: Eng w/ listener's questions (333 7/10 Jones-MS); (343 0232 6/14 Smith-FL)  
 12000 0131 R. Moscow: Eng comtry (444 6/24 Jones-MS)  
 12050 0315 R. Kiev: Eng w/ mx (554 6/24 Deaton-GA)  
 15505 2300 R. Moscow: Eng nx, comtry (242 6/23 Zilmer-WI)

## VATICAN STATE

9605 \*0100 R. Vaticana: Eng s/on w/ bells, tlk (333 6/16 Jacobson-IL); (444 0108 7/1 White-FL)  
 11845 \*0057 R. Vaticana: Eng s/on w/ bells, 0100 ID (343 7/4 Thompson-NM)  
 17840 \*1115 R. Vaticana: Eng w/ IS, ID, nx, comtry (222 6/28 Smith-FL)

## YUGOSLAVIA

6100 \*2200 R. Belgrade: Eng nx (332 7/8 Brooks-CT)  
 9620 \*2200 R. Belgrade: Eng w/ IS, nx (222 6/17 Laves-TX); (422 2200 7/12 Brooks-CT); (423 2200 6/21 Famularo-NJ); (-2 2200 6/27 Talbot-WI)

-Clandestine-

## CLANDESTINE

11695 1645 R. Peyk-e-Iran (Bulgaria): Parsi? w/ OM ancr, various types of mx, middle eastern, "western", tlk, gong @ 1701, possible jamming (333 7/4 Earhart-PA)  
 12140 1600 R. Espana Independiente (Romania): Sp nx, propaganda, ID on the hour (332 6/29 Tannenwald-NY); (352 1800 6/14 Vokes-TX)

# Europe/Africa Roundup:

Ciao! Thanks this month go to new reporters Dean Groce, Ken Karki, Ken Lance, Walter Mardi, Jack Montgomery, Robin Tomori, Bob Vokes, John White, and Bob Wilson. Hope all of you who can make it to the ANARC Convention have good weather and a good time.

**Radio Vaticana goes modern: Tnx to Steve Gelfand who culled this article out of the New York Post June 9, 1975.**

By MICHAEL DOBBS

VATICAN CITY -- Radio Vatican, once the staid voice of the leader of the Catholic Church, is tuning into the seventies with jazz and news in six languages.

The radio station, founded more than 40 years ago so that the Pope could speak to the faithful, has suddenly taken on a new image.

"This is Radio Vatican," a voice blares out from a penthouse flat in the popular Roman quarter of Trastevere. A moment later, the street is filled with the sound of modern jazz in stereo.

Called "Studio A," the new program is the brainchild of a self-effacing American priest, the Rev. John St. George, who is in charge of the radio's English-language programs.

In his office high up above the Vatican gardens and within a stone's throw of St. Peter's, Father St. George admits he had to face opposition in getting his program on the air.

"We snuck up on them," he says, meaning that one fine day last summer the radio waves suddenly vibrated to the sound of "Studio A" without any prior announcement.

As if "Studio A" were not enough, church traditionalists are also having to digest a snappy breakfast time show full of news, music, tourist information and interviews.

Aimed at the millions of foreign pilgrims who have flooded into Rome for the church's jubilee Holy Year

celebrations, the program is conducted in five or six languages.

The show, called "Hello Pilgrim," is fast-paced as the multilingual announcers switch effortlessly from Spanish to French to English to Italian to German. When a party of 30,000 pilgrims from Yugoslavia arrived in town, the announcers came out in Serbo-Croat as well.

**'That's Some Drop'**

The sacred mixes freely with the profane on the show. After a reading from the Gospel, the English host broke in breathlessly to tell his listeners: "The South African Rand has fallen five points on international exchanges and, believe me, that's some drop."

The juxtaposition is an indication of a new philosophy creeping into Vatican radio.

"If you really want to talk to them then you have to meet them where they are. A radio program without an audience is just an exercise in piety," Father St. George said.

REUTERS

73,

Bob

*Bob*





INDONESIA

3165	1208	333	OR	RKPD Kota Madya Surabaya, Jawa: Indo tkl (Bodell 7/1)
3205	1209	343	OR	RRI Bandung, Jawa: same Indo tkl by OM (Bodell 7/1)
3223	1237	333	OR	RRI Mataram, L. Sundas: same Indo tkl (Bodell 7/1)
3241	1212	232	OR	RRI Ambon, Maluku: same Indo tkl (Bodell 7/1)
3250	1213	333	OR	RRI Banjarmasin, Kalimantan: same tkl (Bodell 7/1)
3325	1231	333	JAPAN	RRI Jayapura: Indo tkl by OM (Junqua 7/3)
	1335	432	CA	RRI Jayapura: Indo pop mx, ID, 1400* (Cleveland 7/8)
3345	1221	333	OR	RRI Pontianak, Kalimantan: Indo mx (Bodell 7/1)
3432	1236	333	OR	RPDK Kediri, Jawa: OM singing in Indo (Bodell 7/1)
3945	1139	232	OR	RRI Dempasar: Balinese mx, songs, drums (Bodell 7/10)
3965T	1138	222	OR	RRI Pontianak, Kalimantan: Indo? tkl (Bodell 7/10)
3975	1136	323	OR	RRI Surabaya, Jawa: Indo mx (Bodell 7/10)
4000	1135	333	OR	RRI Kendari, Sulawesi: cont. Indo mx (Bodell 7/10)
4600	1248	333	OR	RKPD Tingkat II Trenggalek, Jawa: Mx (Bodell 7/1)
4719	1210	242	TX	RRI Ujung Pandang: Indo tkl by OM, tx troubles (Vokes), and by Laves TX, Jessen OR, Cleveland CA and by Cleveland CA, Jessen OR.....
4764	1220	233	TX	RRI Medan, Sumatera: Indo tkl by OM (Laves 6/20), and by Cleveland CA, Jessen OR.....
4775	1241	333	OR	RRI Jakarta: Indo tkl, mx //3277 (Bodell 7/14)
4790T	1250	232	OR	RRI Fak-Fak, Irian Jaya: Pop mx, pause, "Love Ambon" RRI ID, then mx (Bodell 7/15) Seemed too strong for RF
4805	1259	322	JAPAN	RRI Jakarta: "Love Ambon" on vibes, mx (Junqua 7/3)
4845	1359	232	OR	RRI Ambon: mx, IS, S/off (Jessen 7/9)
4855	1435	333	JAPAN	RRI Palembang: Indo tkl by OM, mx (Junqua 6/30)
4871	1237	242	TX	RRI Sorong, Irian Jaya: Indo tkl, chimes (Laves 6/13)
	1354	332	CA	RRI Sorong: Indo pop mx, vocals (Cleveland 6/19)
4885	1447	322	JAPAN	RRI Bukittinggi, Sumatera: mx, "L. A." (Junqua 6/30)
4932	1215	232	TX	RRI Surakarta, Jawa: soft mx, ID (Laves 6/20)
	1350	322	CA	RRI Surakarta: 2 YLs w/pgm listings (Cleveland 7/8)
5047	1232	243	TX	RRI Yogyakarta, Jawa: Yl tkl in Indo (Laves 6/20)
5885	1214	242	OR	RRI Pakanbaru, Sumatera: Indo tkl (Bodell 7/10)
5987	1425	443	CA	RRI Menado, Sulawesi: lt mx, tkl, 1430 ID (Cleveland)
6045	1444	422	CA	RRI Jakarta: Indo mx, chanting (Cleveland 6/19)
6070	0840	222	OR	RRI Jayapura: Quran reading, //7161.5 (Bodell 6/27)
<u>7057NF</u>	1135	322	WA	RRI Jakarta: hymns, island mx (Beal 6/21), this is your Chinese(T) Bart, replaces 7195, // 6045, etc. Voice of Indonesia: Eng pop mx, ID (Uerlings 7/2), also in Indo @ 1025 by Eichenhorn MI, and in Eng from 1100 to 1200 by Laves TX, Zilmer WI, Pimblett ALB, Miller OH, Miklejewski MN, Zimarowski MA, and Wirrell MA.....whew.....
11789	*0900	423	WA	

RADIO REPUBLIK INDONESIA

IRAN

9022	2010	222	PA	Voice of Iran: Eng nx (Baron 7/14)
15084	0508	454	PA	VOI: Dramatic pgm in Farsi (Earhart 7/6), and by Beal WA @ 1615, Miller OH, Jessen OR, Wirrell w/ 1845 ID, Jacobson IL....now on 24 hours a day.....

IRAQ

9745	1930	322	MA	Radio Baghdad: S/on w/anthem in Eng (Zimarowski 7/6) and Laves TX, 2015-2103 in German and 2110-2200 in French reports Alan Brooks CT.....
<u>9757.65</u>	1840	???	OK	RB: up from nominal 9745 (Hauser)



ISRAEL

7395	2004	333	PA	IBA: Eng nx (Yajko 6/16)
9495	0300	322	MI	IBA: Hebrew w/mx, prayer, YL nx (Eichenhorn 6/16)
9560	2200	322	WI	IBA: French nx, // 7395, 9815, 12025 (Zilmer 6/20)
9815	0402	353	TN	IBA: Eng w/nx (Smith 7/9)
	2002	433	PA	IBA: Eng w/nx (Yajko 6/16)
11643	0330	343	PA	IBA: classical mx, Hebrew tkl (Earhart 6/26)
	2130	342	WI	IBA: Home Service in Hebrew, //9495, 15512 (Zilmer)
12025	0400	343	CA	IBA: Eng S/on, ID, nx (Sanserino 7/7), and by Baron, Earhart, Miklejewski, and Yajko @ 2000.....
15100	2100	454	FL	IBA: Hebrew political tkl (White 6/14), and by Zilmer WI, and Earhart PA
15485	2000	443	MN	IBA: Eng nx, cnty (Miklejewski 6/27), and by Beal WA, Pimblett ALB, and Jacobson IL.....

NIPPON HOSO KYOKAI

(Japan Broadcasting Corporation)  
TOKYO, JAPAN

JAPAN

3910	1344	432	CA	FEN: Eng w/lr mx (Cleveland 6/19)
	0930	545	HI	FEN: Pop mx, Eng annx (Montgomery 6/10)
3925	1403	333	CA	NSB: Japanese tlk by YL (Cleveland 6/18)
3945	0930	544	HI	NSB 2nd pgm: World nx, cmtly in JJ (Montgomery 6/11)
6055	1435	433	CA	NSB: JJ w/Eng lessons (Cleveland 7/8)
6155	1404	422	CA	FEN: Eng w/mx report, it mx (Cleveland 7/8)
7285	0945	322	WA	NHK Tokyo: Eng/JJ lessons, ID, nx (Beal 6/12)
9505	1605	444	ALB	Radio Japan: Eng tlk, 1615 into JJ (Pimblett 6/22)
9525	1515	333	OR	RJ: Chinese w/IS, S/off (Jessen 7/3)
9585	1259	342	CT	RJ: IS, S/on, features in GOS (Brooks 6/24)
	1540	232	OR	RJ: Eng w/American jazz mx (Jessen 7/2)
9595	1046	343	MN	NSB: Eng w/'Let's Learn Japanese' (Miklejewski 6/23) also in Japanese by Capili HI, Cleveland CA.....
11705	1030	454	MN	RJ: Portuguese to S. A. (Miklejewski 6/23)
11750	0830	444	WA	FEN: Eng pgm (Uerlings 6/24)
11815	1403	311	MN	RJ: Eng in GOS (Miklejewski 7/1)
15105	0019	333	WI	RJ: Nx in Japanese (Winslow 6/17), and by Thompson NM @ 0100, Jacobson IL @ 0500, Beal WA @ 1915, and Jessen OR @ 2017.....in Eng and Japanese.....
15195	0300	343	OR	RJ: OM in Spanish, IS, S/off (Jessen 7/1)
15300	2340	433	IL	RJ: Eng nx, Japanese lessons (Jacobson)
	2345	343	IL	RJ: Eng in N. A. Service (Wilson 6/30)
15310	0520	232	IL	RJ: OM w/nx in Japanese (Jacobson 6/25)
	0720	343	HI	RJ: Nx in Japanese (Trubee 6/13)
15325	0725	343	HI	RJ: German w/nx to Europe, //15430 ex 15390 (Trubee)
15420	0147	333	PA	RJ: Eng tlk on Tokyo museum (Yajko 6/27)
17825	0130	353	CA	RJ: Eng to N. A., // 17125, 15420, 15195 (Sanserinso)
	0140	323	PA	RJ: Eng w/mx of Japan (Yajko 6/27)

KOREA, D. P. R.

2775	1114	232	OR	Hamhung w/Korean choral mx (Bodell 7/10)
3890	1543	444	JAPAN	R. Pyongyang: French tlk to SEA (Junqua 6/29)
7580	1345	422	CA	RP: Eng pol. tlk, 1339* w/anthem (Cleveland 7/9)
9340	0959	221	MN	RP: Eng tlk, mx, ID @1020, // 11535 (Miklejewski)
	1040	433	WI	RP: Eng nx, cmtly (Zilmer 6/25)
9370	1200	322	MN	RP: Eng annx, IS, ID, tlk (Miklejewski 6/30)
	1200	322	WI	RP: Eng nx, cmtly, mx (Zilmer 6/28)
9820	0715	322	CA	RP: Eng cmtly by YL (The Leistners 6/20)
9977	1645	323	WA	RP: Eng cmtly to Mideast, Europe (Uerling 6/20)
11535	1008	433	MI	RP: Eng nx, ID by YL (Eichenhorn 7/1), and by White FL, and in Japanese @1126 by Capili HI.....

KOREA, REPUBLIC OF

3918	1200	323	OR	KBC Seoul: KK tlk, t. pips, them mx (Bodell 7/14)
6348	1120	333	TX	Voice of Hope: KK tlk, mx, 1200* (Vokes 6/26)
9640	0920	333	HI	R. Korea: Eng political tlk by YL (Capili 6/22)
	0925	343	OR	RK: Eng w/'Melodies of Korea' (Hickman 6/28)
15335	0515	343	CA	RK: Eng w/'Melodies of Korea' (Mercado 6/18)
	0905	343	WA	RK: Eng nx, cmtly on No. Korea (Beal 7/2)

KUWAIT

11940	1757	122	TX	R. Kuwait: Jazz, pop mx, Eng tlk (Laves 6/23)
	1919	333	FL	RK: Eng tlk by YL/OM, VOA QRM 11935 (White 7/5)

LAOS

4500	1312	232	JAPAN	United Lao Races(WRTH): lang tlk by OM/YL (Junqua 7/3)
------	------	-----	-------	--

LEBANON

9675	0218	222	TX	R. Lebanon: Arabic tlk (Laves 6/20), Eng @ 0230 heard by Zilmer WI, Vokes TX.....
------	------	-----	----	--

**Radio Iwan**

MALAYSIA

4845	1225	242	TX	Radio Malaysia: mx, 1230 nx (Laves 6/13)
6100	1359	444	CA	RM: mx, then Chi tlk by OM, // 6175 (Szot 6/27)
9665	1545	443	CA	RM: Eng pop mx, B. Malaysia tlk (Birby 7/5)
	1550	333	JAPAN	RM: Eng mx, tlk by YL/OM (Junqua 6/26)
9740	1745	232	OR	BBC Tebrau: World Service, w/Eng nx, cmtly (Jessen)
11750	1600	222	OH	BBC Tebrau: IS, Eng nx (Miller 6/28)



MALAYSIA (continued)

11900 1100 333 TX  
15310 1305 343 CA

Suara Malaysia: Filipino(WRTH) tlk, mx (Vokes 6/26)  
BBC Tebrau: Eng w/nx (Mercado 6/10)



MONGOLIA

11810v 2217 443 JAPAN

Ulan Bator Radio: Eng tlk by OM, mx, YL tlk, ID at 2227, off at 2229 (Junqua 6/23)

PAKISTAN

11762 0430 444 HI  
15520 1300 242 WI  
17820 1303 243 OK

R. Pakistan Karachi: Slo speed Eng nx (Montgomery)  
RP Islamabad: Eng nx (Zilmer 6/29)  
RP: Eng nx (Hauser 7/5)

PHILIPPINES

2653 1045 243 OR

FEBC=Far East Broadcasting Company

DXCR (harmonic of 1326.5): continues to be heard daily from f/in 1045 to f/out 1245, broadcast are mostly religious pgms in Eng and local lang., nx and wx heard at 1100 and 1225, IDs as "...This is DXCR, 1330, Valencia, Philippines (that's on Mindanao). WRTH says owned by Mountain View College, possibly Adventist (Voice of Prophecy @1230)(Bodell) DXCR: IDs slurred, tlk in Eng w/terrible accent, annx freq, as 1330, Mw pwr of 5Kw. (Szot)..... VOA: Eng S/on annx site as Philippines (Beal 6/15) VOA Tinang: IS, ID, S/off (Jessen 7/10) FEBC: hymns, JJ tlk, vocals (Thompson 6/27) FEBC: religious pgm in U/lang (Jessen 6/25) R. Veritas: pop mx, annx by YL, 1235 ID in Thai, 1236 ID in Eng mentioning target areas of Malaysia and Sri Lanka, req. reports to Box 373 Quezon City, then Thai songs (Hauser)..... Voice of Philippines: Eng nx, spts (Cleveland 7/9) VOA Tinang: Viet pgm, IS, ID, 1700\* (Jessen 7/2) AFRTS Poro: Eng pgm relaying AFRTS (Uerlings 6/24) FEBC: Eng religious pgm, 1130 in Japanese, listed last month as Seychelles (Zilmer 6/24), (White FL) FEBC: 'Back to the Bible' in Eng (Montgomery 6/19) VOA Tinang: Eng nx (Zimarowski 7/7) FEBC: Eng w/cnty on Amer. in Philippines (Jacobson)

**PHILIPPINES**

1300 333 CA

6160 1300 343 WA  
7205 1600\* 343 OR  
7225 1330 343 NM  
1610 1610 322 OR  
9569.3 1236 232 OK

MANILA  
CALLING

9580 1405 433 CA  
9605 1635 233 OR  
11840 0830 333 WA  
11855 \*1101 343 WI  
11920 0900 444 HI  
15290 0013 343 MA  
15440 2335 322 IL

RYUKYU ISLANDS

7255 1123 ??? WI

VOA Okinawa: Eng w/severe interfer., mentioned a letter from a Mr. Hauser (who?? hi-Glenn)(Talbot 7/6)



SABAH

4970 1153 122 TX

R. Malaysia Kota Kinabalu: Eng? tlk (Laves 7/8)

SARAWAK

4835 1242 242 TX  
4895 1121 333 TX  
4950 1135 433 TX  
5005 1159 322 TX  
5030 1358 343 OR

RMS=Radio Malaysia Sarawak

RMS Kuching: Chi. w/mx, 1400 Eng (Laves 7/8), also by (Cleveland CA), (Jessen OR) in Bahasa Malaysia RMS Kuching: U/lang tlk (Laves 7/8) RMS Kuching: Eng tlk (Laves 7/8), (Cleveland CA) RMS Sibiu: soft mx, // 4895 (Laves 7/8) RMS Kuching: Bidayuh tlk, ID (Jessen 7/8)(Laves TX)

SAUDI ARABIA

9730 2247 443 CT

BKSA=Broadcasting Service of the Kingdom of Saudi Arabia  
BKSA: Qoran reading, ID 'Arabiyah al Saudiyah', anthem, 2259 S/off (Brooks 7/9).....

SINGAPORE

5052 1345 333 CA  
11940 1335 343 NM  
1535 443 WA

R. Singapore: Eng w/pop tunes (Cleveland 6/20)  
RS: orch., marimba mx, freq ID (Thompson 6/17)  
RS: ID, nx in Eng (Uerlings 6/20)

SRI LANKA

4870 1612 333 JAPAN  
9625 1700 222 OR  
15120 1915 311 MA  
1915 434 MA

SLBC=Sri Lanka Broadcasting Corporation

SLBC Ch. 2: Sinhala tlk, tps, 1630 ID (Junqua 6/29)  
VOA Colombo: Eng nx, heavy QRM (Jessen 7/2)  
SLBC: Eng S/on, nx (Zimarowski 7/5)  
SLBS: Eng nx, mx, requests reports (Wirrell 7/4)

SRI LANKA (continued)

15425 0055 343 FL SLBC: Eng w/mx, relig pgm (White 7/3), and by Laves TX w/BBC nx @ 0200, Scannell MA, Zilmer WI.....

15445 0216 433 PA SLBC: Eng w/U. S. pop mx (Yajko 6/27), // 15425???

REPUBLIC OF CHINA

TAIWAN BCC=Broadcasting Corporation of China VOFC=Voice of Free China

7130 1450 333 OR BCC: Eng to Far East & Australia (Jessen 7/11)

15245 0300 342 TX VOFC: Eng nx, soft mx, cmtly (Vokes 6/22)

TURKEY

9515 0015 322 MS Voice of Turkey: Eng tlk (Jones 7/6), and Yajko PA, Miklejewski MN, Famularo NJ, Smith FL.....

11880 0140\* 433 PA VOT: Eng S/off (Yajko 6/12), RNE/RTE covers them here

15165 \*2200 433 N.A. VOT: heard w/ Eng by Pimblett ALB, Zilmer, Famularo NJ, Miller OH, Eichenhorn MI, & Earhart PA @ 0450...

UNION OF SOVIET SOCIALIST REPUBLICS*Radio Tashkent*Asiatic RSPSR

4485 1345 332 CA Petropavlovsk-Kamchatskiy: Russ tlk (Cleveland 6/18)

5015 1205 333 ALB Vladivostok: Russ tlk (Pimblett 6/25)(Cleveland 7/8)

7210 1610 222 OR Khabarovsk: classical mx, ham QRM (Jessen 6/26)

7495 1453 353 OR Mayak HS via FE site: cl. mx, Russ tlk (Hickman 7/1)

9760 1636 252 OR Mayak (Irkutsk?): mx, RR tlk (Hickman 6/23)

9770 1633 353 OR Mayak Khabarovsk: YL tlk, // 9760 (Hickman 6/23)

9810 1623 343 OR RM Vladivostok: Chi. tlk, mx, 1630 IS (Hickman 6/23)

10275 1259 222 CA Mayak II: Mayak IS, nx in Russian (Szot 6/29)

11690T 0335 332 PA R. Yerevan via FE site: U/lang, tlk, mx (Earhart 7/5)

12010 0630 332 OR RM via FE site: Chi. w/IS, S/or., tlk (Hickman 6/23)

12060 0445 353 PA Mayak: Mayak IS, mx (Earhart 6/14) P-K or Khabarovsk

12240 1640 343 OR Magadan: Russ. w/Opera, tlk (Hickman 6/25)

15180 \*0301 343 FL R. Yerevan via Khabarovsk: Eng nx, 0328\* (White 7/6)

0528 332 PA RM Khabarovsk: Eng tlk, lt mx, ID (Earhart 7/6).....

15210 0540 332 PA RM Petropavlovsk-Kamchatskiy: cl. mx (Earhart 7/6)

17900 0201 242 MS RM Vladivostok: Eng nx (Jones 7/10)

Kazakh SSR

7245 1605 232 OR Alma Ata? relaying RM: Chi. tlk (Jessen 7/1)

17785 1006 343 FL Alma Ata relay: Eng nx, mx 1030 RR (White 7/4)source?

Uzbek SSR

15115 1205 242 OH R. Tashkent: Eng nx by YL, mx, ID (Miller 7/4)

21745 0800 242 HI R.Peace & Prog. via Tashkent(WRTH): Eng tlk (Trubee)

Site Unknown

11735 0412 333 OK RM: used for N. A. service, // 12000 (Hauser 6/20)

1400 333 MA RM? w/ Radiostania Rhodina ID, RR? tlk (Scannell)

2200 333 WI R Kiev: IS, U/lang tlk, mx (Talbot 6/27)

11790 0630 444 HI RM: Eng nx, cmtly (Montgomery 6/11)

11850 0258\* 333 WI RM: S/off (Talbot 6/27)Konevo, Vinnitsa, or Vladiv.

15150 1155 343 PA RM: cl. mx, 1200 IS (Earhart) Alma Ata or Euro site?

15460 1210 353 PA RM: RR tlk, not Tashkent(Earhart)Kenga, Armavir,Zhig

VIETNAM, D. R.

10040 1805 232 OR Voice of Vietnam: Eng nx (Jessen 6/25),(Szot CA)

10059v 1144 322 TX VOV: Viet tlk, children wailing (Laves 6/27), and @ 1440 by Szot CA, varies from 10056 to 10063.....

15012 1253 454 CA VOV: heard w/Viet tlk, mx (Mercado 6/27), and by Zilmer WI, Vokes TX, Beal Wa, and @ 1730 Jessen OR..

SOUTH VIETNAM

9620 0744 122 TX Radio of Liberated Saigon: Viet tlk, // 9755 (Laves)

10010v 1559\* 252 OR Liberation R.: Eng tlk (Hickman 6/25), and Szot CA, Cleveland CA, Laves TX, and in Viet by Vokes TX.....

10222 1308 111 CA LR: YL w/nx in U/lang, heavy QRM (Szot 6/29)

YEMEN ARAB REPUBLIC

9585 \*0300 222 N.A. R. Sana'a: according to reports from the Mideast this is Sana'a rather than Syria at this time as I had previously led people to believe; heard this month by Baron PA, Vokes & Laves TX, Bodell OR w/ flute IS, S/on, Arabic tlk, and Quran reading; Syria sked 1100-1400; Somalia also may use this freq. . .

# OCEANIA

AUSTRALIA			S=Shepparton	P=Perth	L=Lyndhurst
7235	1550	343	OR	R. Australia(S): Eng business report (Jessen 6/26)	
7270	0700*	343	PA	RA(site?): Eng pop mx, ID, S/off (Earhart 6/21)	
9530	2245*	322	WI	RA(S): Eng nx (Zilmer 7/3) via long path????????	
9580	1215	544	GA	RA(S): Eng nx @ 1230 (Deaton 6/23), and White IL	
9610	1545	544	ALB	ABC(P): Eng, 1600* (Pimblett 7/5), and Jessen OR	
9680	0600	343	MN	ABC Melbourne: Eng w/brief nx, mx (Miklejewski)	
9695	1012	333	NJ	RA(S): Eng ID, Eng lessons for Indo (Famularo 6/11)	
9770	1130	433	WI	RA(S): Eng mx, // 6005, 7220, 11810 (Zilmer 6/21)	
11750	0340	444	IL	RA(site?): "Alan Freeman Rock Show" (Jacobson 6/24)	
11840	1830	444	CA	RA(S): Eng w/mx (Henning 7/6), and Miklejewski MN	
15140	0510	343	OR	RA(S): Eng nx (Jessen 7/11)	
15160	0330	333	NM	RA(L): Eng cl. mx (Thompson 6/18), Jacobson IL	
15230	0558	444	HI	ABC Melbourne: "Soundstage" pgm (Capilli 6/22)	
15270mf	0715	242	HI	RA(site?): Eng w/World nx (Trubee 6/13)	
15290	0300	333	OK	RA(S): "Calling Antarctica" on Fridays (Hauser 6/13), Eng heard by Jacobson IL, Mercado CA, Earhart PA....	
15320	0045	333	IL	RA(S): Fr tlk (Winslow), and Deaton GA, Jones MS	
15425	0033+	242	TX	ABC(P): Eng (Laves), (Eichenhorn MI), (Jacobson IL)	
17740	0200	343	PA	RA(S): Eng to SEA (Yajko 6/26), Miklejewski MN	
17795	0330	434	NY	RA(S): Eng (Kannry 7/10), Svinicki MI, Wilson IL	
17820	0450	433	MN	RA(S): Eng to Africa, Fr @ 0530 (Miklejewski 6/25)	
17870	0232	242	FL	RA(S): Eng to SEA (Smith 6/12), Miklejewski 6/25	

## RADIO-NOUMEA

NOUMEA - NOUVELE-CALEDONIE

NEW CALEDONIA				
7170	0713	444	MI	R. Noumea: OM in French (Svinicki 6/12)

## NEW ZEALAND

6080	*0600	433	ALB	NZBC: Eng S/on (Pimblett 6/21), @ 1045 by Zilmer WI
9520	1129	242	OH	NZBC: Latin mx, Eng nx (Miller 6/29)(Zilmer 6/25)
9540	0735	222	MA	NZBC: Eng ID (Zimarowski 6/27)(Henning CA)(Svinicki)
15110	0300	243	AZ	NZBC: nx, wx (Lance 6/25), Baron PA, Svinicki MI
15280	0350	353	PA	NZBC: football(Earhart 7/14), Jacobson IL, Yajko PA

## PAPUA NEW GUINEA

## NBC=National Broadcasting Commission

2376	1208	333	JAPAN	R. Chimbu: U/lang tlk, C&W mx (Junqua 7/6)
2410	1212	333	JAPAN	R. Goroka: Pidgin tlk, C&W mx (Junqua 7/6), Bodell OR
2450	1143	342	JAPAN	R. West Highlands: U/lang tlk, mx (Junqua 6/26)
3220	1242	333	JAPAN	R. Morobe: U/lang w/island mx (Junqua 7/6), Bodell
3945	1248	322	JAPAN	R. Gulf District: island mx, 1302* w/GSTQ (Junqua)
3322	0915	222	MI	R. Bougainville: Pidgin tlk, mx (Eichenhorn 7/1)
3335	0937	2222	MI	R. East Sepik: Pidgin tlk by OM/YL (Eichenhorn 7/1)
3360	1227	333	JAPAN	R. Milne Bay: ID as "National Radio" (Junqua 7/1)
3375	1215	323	OR	R. Southern Highlands: Pidgin tlk (Bodell 7/1)
3385	0925	222	MI	R. East New Britain: Pidgin tlk, mx (Eichenhorn 7/1)
4890	0816	453	MA	NBC: Eng nx (Wirrell 6/27), Zimarowski, Thompson
9520	0630	443	CA	NBC: Eng w/mx, 0800*, // 4890 (The Listeners 6/15)

## SOLOMON ISLANDS

## SIBS=Solomon Islands Information & Broadcasting Service

5020	0751	142	TX	SIBS: Eng tlk (Laves 6/28), and Hickman OR @ 1117*
------	------	-----	----	--

## TAHITI

11825	0338	354	TN	R. Tahiti: heard in Tahitian (Smith 7/9), Henning CA, Zimarowski MA, Pimblett ALB, and in Fr by Miklejewski
15170	2015+	434	CA	HT: in Fr w/mx (Henning 6/12), and White FL, Capilli HI, Svinicki MI, Eichenhorn MI, Wirrell MA.....

## CLANDESTINE

4115-7	1039	222	TX	VRPR: Korean tlk, mx (Laves 6/27), Vokes TX
9423	1432	444	CA	V of the Thai People: march mx, Thai nx (Sztot 6/27)

That doesn't leave me much room. Thank to 46 contributors this month, and especially to new ones: Kenneth Lance, Jack Montgomery, Bob Vokes, John White, Bob Wilson; and to MEL HICKMAN for the great job he did on the column the last 17 months. DATELINE will return next month. Thank go to Mark Scannell, Ken Compton, and Woody Smith for their items (Woody ignore the ret. cd., we had a little "tête-à-tête" w/P.O. over it). Until next month (unless one of the nearby volcanoes erupts before then).....

# WORLD SERVICE STATION SKEDS

EMISSIONS

## PROGRAMMI

Editor:

TRASMISSIONI

BULLETIN DE PROGRAMMES

MEL HICKMAN  
7409 S.E. 82nd  
PORTLAND, OR 97266

PROGRAMS

ENGLISH SERVICE

SERVIZIO

PROGRAMME SCHEDULE

Deadline: 15th

COMUNICATI NEL CORSO

Howdy! Well, here I am a few pages further back in the bulletin. I kinda miss being the center-fold (Hi!). Anyway, here are this month's passports to DX:

**AUSTRALIA:** A couple of changes noted in the RA sked: 15270 has replaced 11765 for the 0645-0915 Eng to Europe (Harding, SCDX) and 11870 is being used to Asia at 1500-1730. (Adrian Peterson in UADX)

**BRUNEI:** R. Brunei has English scheduled at 2258-0030, 0300-0500, and 1200-1430, all on 7215. (Bixby)

**CANADA:** Note these revisions to last month's RCI sked:

1800-1857 Afr 15325, 17c20  
2102-2159 Eur 11855, 15325, 17820  
(Harding)

**CHINA, REP OF:** WFC shows two English transmissions:

0200-0350 to North America and Australia -  
5980, 7130, 11c25, 11c60, 15125, 15345,  
15370, 17720, 17890

1900-2000 to Europe and West Africa  
9510, 11825, 11c60, 15345, 15370, 17720,  
17890. (Harding, Bixby)

**CUBA:** RHC has the following French times:

0300-0330 NA 11760  
0730-0830 Medit 15230  
1700-1840 Medit 11720, 15230  
1900-2010 Eur 11c55 (Cleveland, RHC)

**CZECHOSLOVAKIA:** Prague is currently airing these English transmissions:

0100-1057 ECNA 5930, 7345, 9540, 9740,  
11990  
0300-0357 WCNA Same as above.  
(Harding, Smith)

**EGYPT, A. R.:** R. Cairo's summer Eng sked:

0200-0330 NA 9475  
1715-1830 C/Safr 17890  
2030-2200 E/C/Safr 17725  
2145-2300 Eur 9805 (Bixby)

**FRANCE:** RFI's African service at 1700-

1800 lists these frequencies -  
East and Indian Ocean - 15140, 15160, 15210  
Central Africa - 15300, 17c20, 21620  
West Africa - 15360, 15425, 17720  
North Africa - 7285, 5955, 9505.  
(Harding, Bixby, Laves)

**GERMANY, FED. REP.:** DW has this sked

effective July 1 (all in English):  
0120-0220 Asia 7210, 7285, 9670, 11945  
0130-0150 ECNA 6010, 6040, 6100M, 9565,  
9690, 9745M, 11865M  
0430-0515 C/Safr 7150, 7225K, 9565K, 9765  
0530-0550 WCNA 6075, 6185, 9545

## GERMANY, FED. REP. (CONTINUED)

0600-0630 WAfr 9615, 9700, 11765, 11905,  
15275  
0930-1030 Asia 9c50, 11c50, 11925, 15275,  
17780, 17800, 17825, 21540K  
1045-1115 C/Safr 117c5K, 15410K, 17765,  
17875, 21500, 21600  
1200-1245 WAfr 15410K, 17765K, 17875, 21600  
1715-1745 C/Safr 7286K, 9735K, 11850, 15135  
1720-1750 Asia 7160, 11785, 15405M, 17875M  
1930-2000 WAfr 9765, 117c5, 15150  
2100-2200 Asia 6185, 7130, 9765.  
M = Malta, K = Kigali, Rwanda (Scannell)

**GERMAN DEM. REP.:** RFI hopes listeners in NA

are hearing English at -  
0100-0145 ECNA 9730  
0230-0345 ECNA 9730  
0330-0415 WCNA 9560, 11840, 11c90, 11970  
(Harding, Talbot)

**HOLLAND:** Ru's engineering Dept sked shows these changes from last month's SPSSDX -  
0930-1050 (S-F) Eur 5955L, 6045L, 7210L  
1400-1520 (S-F) Eur 5955L, 6045L  
1642-1651 (M-F) WCNA 11820B, 15190B (Eng/Dt)  
1830-1950 (D) Afr 6020M, 11730L, 17700L  
1830-1950 (D) Afr 6020L  
2000-2120 (D) WEur 9585M  
also

0930-1050 (D) FE 11825L, 15110L  
L = Lopik, B = Bonaire, M = Madagascar  
(Harding, Scannell)

**HUNGARY:** Budapest has Eng at these times:

0200-0230 (Tu-Su) NA 6000, 7220, 9585, 9833,  
11910, 15220, 17710

0300-0330 (Daily) NA Same as above.

0400-0415 (W, Sa) NA Same as above.

1030-1100 (Daily) Au-NZ 7220, 9585, 11910,  
15160, 15235, 17780,  
21525

1200-1240 (M-F) Eur 6025, 7155, 7220,  
9585, 11910, 15160,  
17760

1430-1500 (M-F) Asia 7155, 7220, 9565,  
11910, 15160, 177c0,  
21525

1515-1530 (?) Eur 1340, 6025, 7155,  
9585, 9833, 11910,  
15125, 177c0

2130-2200 (W-F) Eur 5965, 71c0, 9655,  
9c33, 11910, 15125,  
17780 (Scannell-Talbot)

**ISRAEL:** A sked from Davidonis reminds us this country will change to standard time on August 31 as mentioned in A/O last month.

**ITALY:** The RAI English Service to NA is at 0100-0120 on 11c10 and 9575. French follows at 0120-0135. (Harding)

**JAPAN:** The July RJ News lists these new skeds for English transmissions -  
 0130-0230 N/LA 15195, 15235, 17725, 17825  
 0600-0830 Eur 15430, 17325  
 0930-1030 Au-NZ 11875, 15235  
 1115-1145 SEAsia 9675, 11875  
 1630-1700 SAsia/Afr 7250, 9670  
 1630-1900 Eur 7195, 9605  
 2015-2045 ME/NAfr 7250, 9700  
 2345-0045 ECNA 11725, 15270 (R. Japan)

**KOREA, D. P. R.:** Pyongyang Eng services are  
 0600-0800 SEA 9820, 12075  
 1000-1100 LA 7405, 9395  
 1200-1400 SEA 7580, 9370, 15630  
 2300-2400 SEA 11535, 15630. (Cleveland)

**KOREA, REP. OF:** R. Korea uses 15335 and 9640 to beam English as follows:  
 0500-0530 NA 1100-1130 SA  
 0630-0700 Eur 1430-1500 SEA  
 0900-0930 NA 1900-1930 Eur  
 (Marti)

**NEW ZEALAND:** Listeners in the Pacific Islands can hear HNZ English at...  
 0600-0845 on 6080 and 9540  
 1700-1945 on 6080 and 9755  
 2000-0545 on 15110.  
 Three transmissions to Australia include:  
 0000-0545 on 15280  
 0900-1145 on 6080 and 9520  
 2000-2400 on 11900.  
 The Sun. 0015-0045 Antarctica beam is on 15280.  
 (Haring, Marti, Yajko)

**NORWAY:** R. Norway transmits in English at:  
 0000-0030 (Mondays) 9645\*, 11860, 15175\*  
 0200-0230 (Mondays) 6180\*, 9645\*, 11860\*  
 0400-0430 (Mondays) 2645@, 11860, 11870@  
 0600-0630 (Mondays) 11870@, 15175, 17800  
 0800-0830 (Sundays) 6180, 11850, 15175  
 1200-1230 (Sundays) 6180, 15175, 21730  
 1400-1430 (Sundays) 9590, 17795\*, 21730  
 1600-1630 (Sundays) 15175, 15345, 17795\*  
 1800-1830 (Sundays) 6180, 11860, 21730  
 2000-2030 (Sundays) 11850, 15175, 21730  
 2200-2230 (Sundays) 11850, 15175, 15345  
 NA freqs underlined, \* = ECNA, @ = WCNA  
 (Bowen, Harding)

**PORTUGAL:** Adventist World Radio using Radio Trans-Europe has a Saturday only English program at 1900-1930 on 9670. (Compton)

**ROMANIA:** The latest Eng sked of R. Bucharest:  
 0130-0230 ECNA 5990, 6155, 6190, 9570, 9690, 11775, 11940  
 0400-0430 WCNA Same as above.  
 0530-0600 Afr 11840, 15340, 17840  
 0645-0715 Pac 11630, 11940, 15250, 15300  
 1200-1230 Asia 11630, 15300  
 1300-1330 Eur 7195, 9690, 11940  
 1500-1530 Asia 9530, 11940, 15250  
 1730-1800 Afr 9590, 11790, 15365  
 1930-2030 Eur 7225, 9510  
 2100-2130 Eur 7195, 9690 (Famularo)

**SPAIN:** Eng from RNE is beamed to NA at 0100-0145 and 0200-0245 on 6065 and at 0300-0345 on 11925. (Famularo, Smith)

**SWAZILAND:** TRR shows this schedule with only meter bands listed:  
 0445-0700 E/SAfr 60, 31 Afrikaans, English

**SWAZILAND (CONTINUED)**

0700-0930 E/SAfr 60, 31 English  
 1530-1600 SAfr 49, 25 Portuguese  
 1615-1645 SAfr 90, 49 German  
 1630-1700 SAfr 49 Shona (M, TH, Sa)  
 1655-1730 SAfr 90, 49 Zulu  
 1700-1730 SAfr 49 Nyanja  
 1730-1815 SAfr 90, 49 Afrikaans, English  
 1815-2030 SAfr 90, 49 English  
 1900-2000 SAfr 41 Portuguese  
 (Cleveland)

**SWEDEN:** The latest NA schedule for

R. Sweden shows:  
 0100-0130 11955 Swedish  
 0230-0300 9695, 11705 English  
 0230-0300 6035 French  
 1230-1300 15315 English  
 1330-1400 15315 French  
 1400-1430 15315 English  
 1430-1500 15315 Swedish  
 2300-2330 6035, 9605, 11705 English  
 2330-2400 6035, 11705 Swedish  
 (Wilson, Yajko)

**TAHITI:** The beautiful music station is using this sked:  
 French at 0500-0700, 1600-2045, 2145-2330.  
 Tahitian at 0300-0500, 2045-2145, plus news at 1645 and 1715.  
 English news at 1900 Monday thru Saturday.  
 Bi-lingual church services on GMT Mondays, sked not always followed. (Cleveland)

**TOGO:** radiodiffusion du Togo broadcasts in French, English, and vernaculars on 5047 at 0530-0800 and 1730-2300. 7265 is used at 0800-0900, 1200-1400, and 1630-1730.  
 (Famularo)

**TURKEY:** VOT has these languages scheduled for 9515, 11880, 15105:

1330-1430 - Arabic  
 1430-1500 - Romanian  
 1500-1530 - Greek  
 1530-1600 - Bulgarian  
 1600-1630 - Serbo-Croat  
 2100-2130 - German  
 2130-2200 - French  
 2200-0030 - English  
 (TRT)

Thanks much for the support this month and I hope you find this, my first Stations Skeds column useful (and readable).

A couple of notes to end the column. As you have reports for Station Skeds and Asia/Oceania, feel free to put them in one envelope and mail it to either one of us. (It saves postage!)

The ☐ in front of a country indicates I have the complete schedule of that station on file and graphed according to time and in order of frequency (similar to the VOA schedules). If you want a copy of the graphed schedule, send me a SASE and a dime stamp. If you receive complete schedules, I would appreciate receiving a copy or the real thing which I will return the following day.

Don't forget to vote!!!

73's,

*MEL*

# UTILITY REPORT

Deadline: 15th of the month



Editor: STEVEN J. HANDLER  
Ass't.: KENNETH COMPTON

Report to: P. O. Box 253  
Deerfield, IL  
60015 USA

From US Navy Communications Station NST Londonderry, Northern Ireland (via James Vecchiola-PA) comes the following information and schedule for NST and NST Relay transmissions- All broadcasts are keyed by NST, transmitter sites are listed below-

Freq (KHz)	Transmitter Site	Antenna Type	Transmitter Power
7504.5	Londonderry, N. Ireland (NST)	Monocone	3 KW
12691	Londonderry, N. Ireland (NST)	Vertical Doublet	3
3724	Thurso, Scotland (GXH)	90° Sector Sleeve	2.5
5917.5	Rota, Spain (AOK)	Monocone	5
7705	Rota, Spain (AOK)	Monocone	5
222919	Rota, Spain (AOK)	Monocone	5
5167	Keflavik, Iceland (TFK)	Conical Monopole	2.5
8518	Keflavik, Iceland (TFK)	Conical Monopole	3
4623	Nea Makri, Greece (NGR)	Conical Monopole	3.5
13372.5	Nea Makri, Greece (NGR)	Conical Monopole	3

Information above was effective May 1st, 1975.

SAD NEWS: Rumor has it that the US Navy is going to close down US Naval Communications Stations to save some money. Stations that may get the axe by the end of this year are NSS and TFK. NSS is the US Naval Communications Station Washington DC located at Cheltham, Maryland. TFK is the US Naval Communications Station located at Keflavik, Iceland. You may want to QSL them before they close down.

Address reports to NGR as follows: U.S. Naval Communications Station NGR  
Nea Makri, Greece  
F.P.O. New York, NY 09525  
Attn: Chief Radio Officer

Reports for NSS may be sent to: U.S. Naval Communications Station-NSS  
Chief Radio Officer  
(Cheltham, Maryland)  
Washington, D.C. 20390

Lot of loggings this month so the QSL report will be brief:

AUSTRALIA: Standard Frequency Time Station VNG, 4500 KHz Lyndhurst, sent card and letter folder card with full data for two IRCs and EE report (Nutter-KY)

BERMUDA: US Naval Air Station, Bermuda 'RASPBERRY BERMUDA', 6723 KHz USB returned PFC with full data. Power listed as .175 Kw w/35' conical antenna. vs: Joseph Keifer (Chabak)

ICELAND: US Navy Communications Station, Keflavik, NRK/TFK using tactical id 'Portcall' 11268 KHz SSB, 5kW using a Rhombic antenna 256' returned PFC in 91 days air (Chabak)

LAOS: XWA-Vientiane sent card and letter for report via U.S. Embassy, Vientiane in two weeks air for two IRCs and mint stamps. verified by Mr. Khamleuang Sayarath, Sec. General of PIT via L.W. Pate U.S. Information Service-U.S. Embassy (Scott-FL) Fantastic!

NORTHERN IRELAND: U.S. Naval Communications Station-NST Londonderry, 7504½ KHz sent regular card (yellow card with Navy Seal and Leprechaun) with full data in two weeks for 1 IRC and EE report. vs: Receivers Officer (Vecchiola-Pa) same 44 days (Walters-NJ) the Receivers Officer indicates that he welcomes reports, send your's to: C.J. Rhoades, ENS, USNR, Receivers Officer, USNAVCOMSTA-NST, Northern Ireland, FPO New York, NY 09512

SOUTH AFRICA: ZUD sent black & white map card in 35 days for EE report and 2 IRCs, 5305KHz using horizontal log peridic, xmsm dir. to Luanda, Angola (Chabak-CO)

SCOTTLAND: SKERRYMORE LIGHTHOUSE 2182 KHz sent PFC card with full data in 41 days for mint stamps return postage/ (Crawford-Scotland)

SHIPS: U.S.S. BARBIE NIBS 2550 KHz returned PFC in 1 week, pwr 500 watts (Trubee-Hi)  
USS FREELE DLG-15 NLOH 8742 KHz 500 watts to NORATS-Honolulu, returned PFC (Chabak)  
USS MOUNT WHITNEY LCC-20 3261 KHz returned PFC in 32 days, w/photo of ship (Chabak)

More QSLs next month, now on to the loggings---

## LOGGINGS

## NORTH AMERICA

ALASKA:	8934	0326	KIS70 Anchorage VolMet OM EE wx AM (Brooker-MI)
	8989	0338	AKA Elmendorf AFB OM EE tfc USB (Brooker-MI)
	13201	0538	Elmendorf Airways EE tfc USB (Trubee-HI)
CANADA:	4422.2	0526	CFW300 Vancouver marine op EE tfc USB (Trubee-HI)
	8440	0035	CFH Navy Ellershouse NS V mkr CW (Scott-FL)
	12874	2035	VCS DCT Halifax NS CQ mkr CW (Thompson-NM)
	12874a	2237	CKN Vancouver BC CFS V mkr CW (Thompson-NM)
	13130	0220	VAI DCT Vancouver CQ mkr CW (Thompson-NM)
	13273	2355	Gander VolMet OM EE wx AM (Jacobson-IL)
GREENLAND:	6715	0304	XPH Thule AFB w/SKYKING USB (Handler-IL)
	14900	2009	OXI68 Godthaab YL EE/Dan vm SSB (French-MD)
U. S. A.:	60	0358	WVVB Ft Collins CO BCD time code AM (French-MD)
	179	0357	WGU20 DCPA Chase MD OM time/ex AM (French-MD)
	232	0355	"MX" Andrews AFB MD beacon CW (French-MD)
	2514	1117	WLC Rogers City MI CM EE wx AM (Talbot-VI)
	3268	0330	NPG USN San Francisco CA V mkr CW (Thompson-NM)
	3502.5	2315	NPG USN San Francisco CA annex Ham AFD call on 3991. LSB (Beal-WA)
	4256	0242	KLC ITT Galveston TX CW mkr CW (Thompson-NM)
	4310	0020	WNU TRT Pearl R. LA CQ mkr CV (Scott-FL)
	4721	0222	CROWN (White House) tfc w/CARBINE via Andrews AFB telephone patch USB (Burton-OH)
	5519	1109	Cakland VolMet OM EE wx USB (Capilli-HI)
	5696	1050	USCGAS Corpus Christi TX OM EE tfc USB (Beal-WA)
	6446	0235	MLO Mobile R. AL V mkr CV (Thompson-NM)
	6540	2353	KEA4 NY ARINC w/Air Jamaica SSB? (French-MD)
	6723	2355	RASPBERRY Patuxent MD OM EE tfc USB (Handler-IL)
	6738	0951	McClellan AFB OM EE vm USB (Capilli-HI)
	6756	0028	CROWN w/SAM31861 via patch Andrews USB (Burton-OH)
	6792a	0051	KKN50 State Dept Wash DC 2RA mkr CW (Scott-FL)
	7303	2330	NPG OM&YL w/AFC Ham call on 7285 LSB (Beal-WA)
	8514	2150	WSL ITT Amagansett NY V mkr CV (Thompson-NM)
	8550	0205	WPA RCA Port Arthur TX v mkr CW (Thompson-NM)
	8582	2143	KLB ITT Marysville WA CQ mkr CW (Thompson-NM)
	8590	1533	KCK ITT Cerritos CA CQ mkr CW (Thompson-NM)
	8610	0156	WSC RCA Tuckerton NJ V mkr CW (Thompson-NM)
	8630	0152	WCC RCA Chatham MA V mkr CW (Thompson-NM)
	8728	2204	NMF USCG Marshfield MA CQ mkr CW (Burton-OH)
	8778.5	0330	WOM ATT Ft Lauderdale FL EE tfc USB (Jacobson-IL)
	8868	0740	NY VolMet OM EE wx AM (Jacobson-IL)
	8945	0114	KEA5 ARINC NY w/Clipper 180 AM? (French-MD)
	8989	0243	Loring AFB ME w/"44" SSB (French-MD)
		0231	McClellan AFB w/MAC60203 SSB (French-MD)
		1322	Loring AFB cly ASCCT4082 (Brit a/c) (French-MD)
	3993	1346	MacDill AFB FL w/Navy DR5X SSB (French-MD)
	9905	0250	WOC ATT Manahawkin NJ CM EE vm LSB (Winslow-WI)
	11176	2245	McClellan Airways CA EE tfc USB (Trubee-HI)
	m12022.5	1947	KKN50 State Dept Intell Svc Wash DC 2RA mkr CW (Compton-MA)
	12771a	0220	NMN USCG Portsmouth VA CQ mkr CW (Thompson-NM)
	12826.5	0210	WNU TRT Pearl R. LA CQ mkr CW (Thompson-NM)
	13051.5	2127	WPD Tampa Marine FL CQ mkr CW (Thompson-NM)
	13138.5	2135	WCK ATT Ft Lauderdale FL OM EE tfc USB (Jacobson)
	13400a	2355	WOC ATT Manahawkin NJ CM EE vm USB (Jacobson-IL)
	13998	0227	AIR USAF HQ Wash DC CQ mkr CV (Brooker-MI)
	14400	2230	VOA EE/CC feeder Delano CQ LSB (Beal-WA)
	15547m	2339	KKN50 State Dept Wash DC V mkr CW (Burton-OH) 1815 (Hauser-OK)
	16973.5	1753	WCC RCA Chatham MA V mkr CW (French-MD)
	16997.6	1752	WSL ITT Amagansett NY CQ mkr CW (French-MD)

## CARIBBEAN

BAHAMAS:	396	0200	"ZBB" beacon Bimini CW (French-MD)
BARBADOS:	12709	0210	SPO C&V St. Philip ID mkr CW (Thompson-NM) 2335 (MacLennon-ONT)
BERMUDA:	2716	0728	BERMUDA CONTROL USN OM EE tfc SM (Simon-NY)
	8718	1330	VRT Bermuda R. C&V V mkr CW (Brooker-MI) 2440 (MacLennon-ONT)
	12709	2345	VRT C&V Bermuda R. V mkr CW (Thompson-NM)

CUBA: 4168 0113 CLQ Havana R. tfc CW (Brooker-MI) 2240 (Mac-  
lennan-ONT)  
6505.5 0120 CLA2 Havana R. CQ mkr CW (Thompson-NM)  
12878 0110 CLQ Havana IRTS V mkr CW (Thompson-NM)  
17393 1838 CLN562 YL EE/SS vm SSB (French-MD)  
17805a 2124 CLQ Havana R. CQ mkr CW (New Freq?) (Hauser-OK)  
GUANTANAMO:6723 0045 RASPBERRY GUANTANAMO clg San Juan USB (Burton-OH)  
MARTINIQUE:8554 0203 FUF Fr. Navy Fort de France V mkr CW (Thompson-NM)  
NETHERLANDS  
ANTILLES:6491.5 0126 PJC Curaçao R. Willemstad CQ mkr CW (Burton-OH)  
8694 1213 PJC Curaçao R. CQ mkr CW (Brooker-MI)  
13042.5 1428 PJC Curaçao R. CQ mkr CW (Brooker-MI)  
PUERTO  
RICO: 8471 0712 NMR USCG San Juan V mkr CW (Burton-OH)  
12718.5 0010 NMR USCG San Juan CQ mkr CW (Thompson-NM)

CENTRAL AMERICA

CANAL ZONE:8615 1140 NBA USN Balboa CQ mkr CW (Brooker-MI)  
11176 0554 AHF Albrook AFB AIRWAYS EE tfc USB (Trubee-HI)  
12883 0050 NBA USN Balboa CQ mkr CW (Thompson-NM)  
15015 0200 AHF Albrook AFB OM EE tfc USB (MacLennan-ONT)  
1510 (Brooker-MI)  
COSTA RICA:8478 0304 TIM CRI Limón V mkr CW (Brooker-MI)  
13100 0200 TIM CRI Limon V mkr CW (Thompson-NM) 0231  
(Brooker-MI)  
MEXICO: 12844 1732 XFL Mazatlan de Sinaloa CQ mkr CW (Thompson-NM)

SOUTH AMERICA

ARGENTINA: 8646 0135 LPD86 Gen. Pacheco R. V mkr CW (Thompson-NM) 0229  
(Brooker-MI)  
10256m 0320 CIT Buenos Aires YL SS vm LSB (Simon-NY)  
10350 0019 LQA5 CIT Buenos Aires YL SS vm SSB (French-MD)  
12705a 2358 LSA5 Boca R. V mkr CW (Thompson-NM)  
12988.5 2335 LPD88 Gen. Pacheco R. V mkr CW (Thompson-NM)  
BRAZIL: 6369 0321 PPA25 PTT Amaralina R. CQ mkr CW (Thompson-NM)  
7470 0347 EMBRATEL Rio YL EE/FF OM PP vm LSB (Simon-NY)  
10640 0249 PVX EMBRATEL Rio YL-OM EE/FF-PP vm SSB (French-MD)  
12210 0324 PPG6 EMBRATEL Rio YL FF vm & tfc SSB (French-MD)  
12753 2358 PWZ USN Guanabara V mkr CW (Thompson-NM)  
CHILE: 6481.5 0055 CCS Navy Santiago V mkr CW (Thompson-NM)  
12526 0040 CCM Navy Punta Arenas V mkr CW (Thompson-NM)  
17606 2039 CCS Navy Santiago clg HDW CW (Burton-OH)  
COLOMBIA: 8470a 0034 HKB Barranquilla R. CQ mkr CW (Scott-FL)  
12781.5 2353 HKB Barranquilla R. CQ mkr CW (Thompson-NM)  
12853.5 2248 HKC Buenaventura R. CQ mkr CW (Thompson-NM)  
13087.5 1902 HKC Buenaventura R. CQ mkr CW (Brooker-MI)  
GUYANA: 8718 0132 8RB W. Indies C&W Demarara CQ mkr CW (Brooker-MI)  
URUGUAY: 10770 1147 CXL24 "La Señal" Montevideo YL time sig mkr SSB  
(French-MD)  
13371.2 2213 CWO4 Montevideo V mkr CW (Thompson-NM)  
16047.5 ??? CXL28 "La Señal" YL time sig SSB (French-MD)  
17606 2035 CXR Navy Montevideo clg DYM CW (Burton-OH)  
VENEZUELA: 6100 0720 YVTO Caracas time sig AM (Uerlinge-WA)  
8959 0009 YXA Maiquetia Aeradio clg San Juan AM? (French-MD)

EUROPE

AZORES: 7364 0918 CTD7 Radionaval Ponta Delgada clg CTAC CW  
(Griffith-MO)  
BELGIUM: 8652 2315 OST Ostend R. V mkr CW (MacLennan-ONT)  
13067 1421 OST4 Ostend R. CQ mkr CW (Brooker-MI)  
CZECHOSLOVAKIA:  
3170 0230 OLB5 OMA Prague time sig CW (Olsson-CT)  
DENMARK: 12916.5 0155 OKX6 Lyngby R. CQ mkr CW (Thompson-NM)  
13239 2340 Frederikshavn R. ID mkr CW (Thompson-NM)  
ENGLAND: 1657.5 1845 Jersey R. OM EE wx AM (Crawford-SCOTLAND)  
2719 0708 GCC Cullercoats R. EE tfc list AM (Crawford-S)  
4251.5 0240 GKS Portishead R. ID mkr CW (Thompson-NM)  
8190a ??? GKK Portishead R. ID mkr CW (Scott-FL)  
8410a 0032 GKC Portishead R. CQ mkr CW (Scott-FL)  
8496 0301 GKS Portishead R. ID mkr CW (Brooker-MI)  
8558 0246 GKB Portishead R. ID mkr CW (Brooker-MI)



	11200	0241	MVU RAF W. Draydon EE wx USB (Handler-IL)
	12835.5	2338	GKB Portishead R. ID mkr CW (Thompson-NM)
	13020	1911	GKC Portishead R. ID mkr CW (Brooker-MI)
	14993	1432	BBC EE feeder AM? (Hauser-OK)
FRANCE:	4328	0254	FFL2 St Lys R. CQ mkr CW (Thompson-NM)
	6421.5	0117	FFL3 St Lys R. CQ mkr CW (Thompson-NM)
	8522.5	0138	FFL4 St Lys R. CQ mkr CW (Thompson-NM)
	10195	1947	FPR9 FTS Paris OM EE/FF vm SSB (French-MD)
	11391	1500	Paris VolMet OM FF wx AM (Crawford-SCOTLAND)
	15805	1850	FTP80 FTS Paris OM EE/FF vm SSB (French-MD)
GERMANY, E.:	12869a	0348	DHS Ruegen R. CQ mkr CW (Thompson-NM)
	18535	0930	UDP Berlin OM EE/FF/GG vm USB (Kiyomiya-JAPAN)
GERMANY, W.:	2614	0645	DAJ Norddeich R. OM EE/GG wx AM (Crawford-SCOT)
	4244	0235	DAL Norddeich R. V mkr CW (Thompson-NM)
	5690	0321	Lahr Military CFS clg CAM7449 USB (Burton-OH)
	8511.9	0253	DAL Norddeich R. V mkr CW (Brooker-MI)
	12763.5	0047	DAM Norddeich R. V mkr CW (Thompson-NM)
	12898.5	0103	DAN Norddeich R. CQ mkr CW (Thompson-NM)
GREECE:	8704	0215	SVA Athinal R. V mkr CW (Brooker-MI) 0240 (MacLennan-ONT)
HOLLAND:	1862	0700	PCH Scheveningen R. OM EE tfc list AM (Crawford)
	7735	????	PDL37 PTT Kootwijk OM EE vm SSB (French-MD)
	8562	0244	PCH2 Scheveningen R. CQ mkr CW (Brooker-MI)
	10735	2227	PCL50 PTT Kootwijk OM EE vm USB (Simon-NY)
	12966	1948	PCB8 Scheveningen R. CQ mkr CW (Brooker-MI)
ICELAND:	8690	2155	TFA PTT Reykjavik R. CQ mkr CW (MacLennan-ONT)
	13069.5	1927	TFA4/13 PTT Reykjavik R. CQ mkr CW (Brooker-MI) 2132 (Olsson-CT)
IRELAND:	5533	0014	Shannon VolMet OM EE wx AM (Olsson-CT)
	13312	2024	Shannon VolMet OM EE wx AM (Brooker-MI)
ITALY:	4615	0226	IDR2 Rome V mkr CW (Brooker-MI)
	6390	0315	IDQ Navy Rome ID mkr CW (Thompson-NM)
	7304	0151	IDR3 Rome V mkr CW (Hauser-OK)
	8460a	0038	ICB Genova R. CQ mkr CW (Scott-FL)
	8470a	0040	IQX Trieste R. CQ mkr CW (Scott-FL)
	8649.5	0206	IAR Roma R. V mkr CW (Brooker-MI)
	8685	0156	IRM Rome Medical R. V mkr CW (Brooker-MI) 0303 (French-MD)
	12996	1955	IAR Roma R. V mkr CW (Brooker-MI)
	12975	2320	IQX Centro R. Trieste V mkr CW (Thompson-NM)
	12978	2330	ICB Genova R. V mkr CW (Thompson-NM)
	13015.5	2131	IAR3 Roma R. V mkr CW (Thompson-NM)
NORWAY:	6915	2355	LHB Rogaland R. Press CW (Olsson-CT)
POLAND:	8482	0100	SPH4 Gdynia R. CQ mkr CW (MacLennan-ONT)
	8634	0250	SPH2 Gdynia R. V mkr CW (Thompson-NM)
	8902.5	2150	SPC Gdynia R. PTT OM EE/PP vm SSB (Compton-MA)
	13793	1140	SON37 PTT Warsaw OM EE vm USB (Kiyomiya-JAPAN)
PORTUGAL:	8490	0302	CUL7 Lisboa R. CQ mkr CW (Brooker-MI)
SCOTLAND:	1827	0707	GKR Wick R. clg ship SSB (Crawford-SCOTLAND)
	9043a	0042	MKL RAF Pitreavie wx best CW (French-MD)
SPAIN:	8619	0232	EAD Aranjuez R. CQ mkr CW (Brooker-MI)
	13065	1904	EAD4 Aranjuez R. CQ mkr CW (Brooker-MI)
	13175.5	0650	EHY51 Madrid EE tfc USB (Trubee-HI)
SWEDEN:	4180a	0323	SAG Göteborg R. CQ mkr CW (Brooker-MI)
	8498	2240	SAG2 Göteborg R. CQ mkr CW (MacLennan-ONT)
	12880.5	0338	SAG Göteborg R. CQ mkr CW (Thompson-NM) 2305 (Olsson-CT)
SWITZERLAND:	14505	1450	PTT Berne YL EE/FF/SS vm USB (Simon-NY)
U.S.S.R.:	2182	2205	UNN Vyborg R. EE tfc AM (Crawford-SCOTLAND)
	4710	1410	Kuibyshev Vol Met YL RR wx AM (Junqua-JAPAN)
	8260	0950	UFN Novorossisk R. V mkr CW (Scott-FL)
	8658	0310	UJQ Kiev V mkr CW (French-MD)
	12708a	0003	UMV Murmansk R. V mkr CW (Thompson-NM)
	13080	1445	UMV Murmansk R. YL RR vm SSB (Crawford-SCOT)
YUGOSLAVIA:	8700	0134	YUR Rijeka R. V mkr CW (Brooker-MI)

-----  
AFRICA

ANGOLA:	8642	0110	XXV25 PTT Luanda CQ mkr CW (MacLennan-CNT)
ASCENSION I.:	6753	0107	USAF Ascension R. w/MAC40651 USB (Burton-OH)
CAMEROON:	9045.5	0117	TJF90 STI Douala YL EE/FF vm SSB (French-MD)

CEN.AF.REP.:19298	0003	FCR Bangui YL EE/FF vm LSB (Simon-NY)
	15640	1510 FCR Bangui YL EE/FF vm LSB (Kiyomiya-JAPAN)
ETHIOPIA:	17495	1130 ETS Addis Ababa YL EE/Amh vm LSB (Kiyomiya-JAPAN)
LIBERIA:	7830	2230 KKN44 US Embassy Monrovia clg KMT99 & KWR93 CW (Compton-MA)
	18352.5	1647 KKN44 US Embassy Monrovia c17 KWR96 CW (Burton-OH)
MAURITIUS:	8726	0250 ZC04 BRN Vaccas V mkr CW (MacLennan-ONT) 0255 (French-MD)
MOROCCO:	6720	0257 FANPARE USN Kenitra OM EE test USB (Burton-OH)
	8686	2210 GNP PTT Casablanca CQ mkr CW (MacLennan-ONT)
SENEGAL:	8666	0110 6WW Fr. Navy Dakar V mkr CW (MacLennan-ONT)
	17218.4	2042 6WR Fr. Navy Dakar V mkr CW (Burton-OH)
SO.AFRICA:	4247	0150 ZRQ Cape Naval R. Wynberg V mkr CW (Thompson-NM)
	8566	0243 ZSC Capetown R. CQ mkr CW (Brooker-MI)
	13598	1450 S.Af. AF Durban OM EE vm SSB (Crawford-SCOTLAND)
SUDAN:	8959	2325 Khartoum Aeradio OM EE tfc AM (Clason-CT)
UPPER VOLTA:	11095	2050 XTA9 FCR Ouagadougou YL EE/FF vm USB (Simon-NY)

-----  
ASIA

BURMA:	19170	0940 PTT Rangoon OM EE vm USB (Kiyomiya-JAPAN)
HONGKONG:	5519	1116 VolMet OM EE wx USB (Capilli-HI)
	8903	1315 VolMet OM EE wx SSB (Thompson-NM)
INDONESIA:	8868	1632 Kemayoran Aeradio Jakarta OM EE tfc AM (Junqua-J)
	19340	0451 PTT Bandung OM EE vm USB (Kiyomiya-JAPAN)
ISRAEL:	8694	0005 4XO PTT Haifa CQ mkr CW (MacLennan-ONT)
	8706	0216 4XZ Haifa Naval R. V mkr CW (Brooker-MI)
	16425	2110 4XL Lod R. EE tfc CW (Burton-OH)
JAPAN:	5519	1111 Tokyo VolMet OM EE wx USB (Capilli-HI)
	8903	1310 JMA Tokyo VolMet OM EE wx AM (Thompson-NM)
	11176	0550 Yokota Airways USAF OM EE tfc USB (Trubee-HI)
	12878	0342 JCU Choshi R. CQ mkr CW (Thompson-NM)
	13008	1540 JCR Nagasaki R. CQ mkr CW (Thompson-NM)
	13201	0547 Yokota Airways USAF c1g SKYKING USB (Trubee-HI)
	17697	0645 KDD Tokyo YL EE/JJ vm LSB (Trubee-HI)
PHILIPPINES:	11251	0958 AIC Clark AFB OM EE tfc USB (Trubee-HI)
SAUDI ARABIA:	18785	0730 HZQ PTT Jeddah OM EE/AA vm LSB (Kiyomiya-JAPAN)

-----  
OCEANIA

AUSTRALIA:	4500	1320 VNG Lyndhurst time sig AM (Uerlings-WA)
	7500	1230 VNG Lyndhurst EE time sig AM (Talbot-WI)
	8478	0717 VHP4 Navy Canberra V mkr CW (Burton-OH) 074C (MacLennan-ONT)
	8481	1152 VIS Sydney Press CW (Brooker-MI)
	8521	1149 VIS26 AORTS Sydney V mkr CW (Brooker-MI)
	12000	0445 VNG Lyndhurst time sig AM (Gaede-CA)
	14430	0630 CTC Sydney new OM EE vm SSB (Kiyomiya-JAPAN)
GUAM:	6739	0950 AIE Andersen AFB OM EE tfc USB (Capilli-HI)
	13201	0554 Andersen Airways EE tfc USB (Trubee-HI)
HAWAII:	2500	1124 WWVH NES Kauai time sig EE OM AM (Leamy-OH)
	4585	0438 KUA341 CAP w/FIREBRAND & Mobile 191 USB (Trubee)
	6520	0550 NMO USCG Honolulu EE wx USB (Trubee-HI)
	8542	0600 KHK RCA Honolulu V mkr CW (MacLennan-ONT)
	8903	1320 KVM70 Honolulu VolMet OM EE wx AM (Thompson-NM)
	13201	0620 USAF Hickam Airways EE tfc USB (Trubee-HI)
NEW CALEDONIA:	17655	2359 FUJ Fr. Navy Noumea V mkr CW (Brooker-MI)
NEW ZEALAND:	8678	1143 ZLP4 RNZN Iirirangi V mkr CW (Brooker-MI)
	8870.4	1105 ZLZ NZPO Himatangi tfc USB (Capilli-HI)
	12740	0330 ZLB5 Awarua CQ mkr CW (French-MD)
	12943.5	2256 ZLP2 RNZN Iirirangi V mkr CW (Thompson-NM)
PHILIPPINES:	6738	1124 AIC Clark AFB w/SKY KING EE USB (Capilli-HI)
TAHITI:	11665	1005 FZP6 FTS Papeete YL EE/FF vm USB (Simon-NY)

-----  
TACTICAL

4495	0946	FORESTROW w/SPEAR EE CM tfc USB (Trubee-HI) SAC net-ED.
8989m	1520	GOLDEN HAWK radio checks w/724D, 3VH9 et al SSB (Compton-MA)
	1526	PHENOMENON R. cks w/V30T & 3VHM SSB (Compton-MA)
	1530	3VH9 c1g DESTINY SSB (Compton-MA)
11243	0549	BOULDER DAM & WINNING WILLIE c1g SKYKING USB (Trubee-HI)
	1325	WINNING WILLIE CM EE SKYKING best USB (Brooker-MI)
	0551	SEA FOWL w/SURVIVAL OM EE USB (Trubee-HI)
	0557	LOMITA w/DIADEK, AMERICAN ELI., PERBIMON TREE USB (Trubee)

11243 0605 DATEABLE YL EE w/DIETARY, SUMMER SCHOOL & TENOR (Trubee)  
 0618 BIRCHTREE w/ENCO, RONIS YL, & CHUG57 USB (Trubee-HI)  
 0622 DECKBOAT w/JET SET & UNDERSIDE USB (Trubee-HI)  
 11265 1008 TANGO NOVEMBER w/WHITETREE USB (Trubee-HI) USN net-ED.  
 15034.5 1512 THRASHER w/CHARLIE QUEBEC USB, then RTTY (Brooker-MI)

-----  
 HIGH SEAS

500 0354 UULA "Velikii Octiabr" clg CLA CW (French-MD)  
 2550 0645 USS BARBIE radio check w/Pearl Harbor AM (Trubee-HI)  
 4183a 0422 GBTT "Queen Elizabeth II" clg NBA CW (Burton-OH)  
 5696 0942 NPCR CGC "Dallas" w/NMO Honolulu USB (Beal-WA)  
 6274 0156 GNUT "Baron Renfrew" cargo ship clg GKB CW (Thompson-NM)  
 6276 0203 GZDB HMS "Edith" clg GKB CW (Thompson-NM)  
 6333a 0551 RMQT (USSR Navy vessel) clg ESF CW (Burton-OH)  
 6723 0321 GKXS HMS "Ark Royal" EE tfc USB (Handler-IL)  
 8260a 0055 YUCU (USSR ship) tfc CW (Scott-FL)  
 8404a 0539 RMUS (USSR Navy ship) clg ESF CW (Burton-OH)  
 12358 0232 "Enterprise" cargo ship wkg WOM USB (Trubee-HI)  
 0245 "Margarita" wkg WOM USB (Trubee-HI)  
 12361.5 0245 "City of Lisbon" w/WOM USB (Trubee-HI)  
 12372 0225 "Top Wave" w/KMI USB (Trubee-HI)  
 12375.5 0626 "Darmad Skou---?" Danish ship w/Hongkong R. USB (Trubee)  
 12382.5 0550 "Queen Mary" US cargo ship w/KMI USB (Trubee-HI)  
 0610 "Venture II" (US registry) w/KMI USB (Trubee-HI)  
 0630 "Marconi Transporter" ore carrier w/KMI USB (Trubee-HI)  
 12396.5 0220 OOUL "Copenhagen" Danish liner w/KMI USB (Trubee-HI)  
 12571a 2135 GOQF "Anco Sovereign" clg FFL CW (Thompson-NM)  
 12768a 2237 DINH "Paul Lorenz Russ" clg DAN CW (Thompson-NM)  
 12782a 2232 GRYS "Orcoma" cargo ship clg GKB CW (Thompson-NM)

-----  
 AIRCRAFT IN FLIGHT

6727 0323 MAC59400 w/AFG37 Scott AFB IL SSB (French-MD)  
 6713 0035 AIR FORCE ONE w/SAM 2000 & RESCUE ECHO LSB (Olsson-CT)  
 8989 1321 Ascot 9041 (RAF a/c) w/Loring AFB ME SSB (French-MD)

-----  
 "SPY" NUMBERS STATIONS

4669a 0222 YL EE 4-digit groups "End" @ 0225 (Bixby-CA)  
 9000m 1410 "138" YL SS 4-digit grs count 83, msg repeated, "Final" @  
 1427 SSB (Compton-MA)  
 9955a 2227 Series of dots to 2230, then EE YL w/"754" repeated for 10  
 minutes, high background noise AM (Hauser-OK)  
 13020 1409 YL SS 4-digit grs, msg repeated, off @ 1426 SSB (Compton)

-----  
 UNIDENTIFIED

8609 1536 "NAVCOMSTA ONE" OM EE vm w/short count USB (Junqua-JAPAN)  
 8635a 1317 SMOKY ZERO ONE w/North Bay Ont. via Andrews phone patch  
 SSB (Compton-MA)  
 15075 1606 "QTT DE ITT COM NY" CW (Hauser-OK)  
 15240 1825 "PB" jammer against IBA's RR program? (Hauser-OK)  
 15370 1612 "BR" USSR jammer against R. Svoboda (Hauser-OK)

-----  
 RADICTELETYP

Two reporters again this month!

BOLIVIA: 10495 0125 CPM2 La Paz RY test 60 wpm/60 Hz shift (Green-UT)  
 GUINEA: 10288 0110 3XA Conakry? RY test 66/425 (Green-UT)  
 GERMANY, E.: 9062 0505 Koenigswusterh. RY test 66/425 (Green-UT)  
 KENYA: 8165 0155 5YD7 Nairobi RY test 66/425 (Green-UT)  
 KERGUELEN  
 ISLAND: 10113 0340 FJY2 (French Antarctica) tfc to Tahiti 66/425  
 (Green-UT)  
 NIGERIA: 7818 ??? 5NK Kano RY test 66/425 (Green-UT)  
 KOREA, N.: 13780 0330 HME28 Korea Central News Agency Pyongyang test &  
 nx 66/425 (Green-UT)  
 SUDAN: 10237 0245 STK Khartoum RY test 66/425 (Green-UT)  
 U. S. A.: 10600a 0140 WFK21 PREWI NY w/QRA WUK38, WFN20, WFN52 66/425  
 (Scott-NY)  
 AT SEA: 8430 0110 RETJ (Russian vessel) RY test to EBA2/4 Madrid  
 (Scott-FL)

73 & Good DX!

*Steve and  
 Ken*

# QSL REPORTS



Editor: Bill Cleveland  
2441 Fairview Drive  
Visalia, Calif. 93277

Verified countries -- 167

Deadline: 15th of month

"No one needs a vacation so much as the fellow that just had one!" Anyway, I had one and now I need one. Back to the lawnmower and typewriter keys. Had a great trip, ate lots of seafood (no clams, Jaime!), and gained "x" pounds, where "x" is a very large number. Stopped off in Portland and had a brief chat with new A/O Editor Bob Bodell, then on to Seattle. Saw more rain in a week than I saw all last winter--kinda nice for a change. Took a day off and splashed my way over to Port Angeles to call on SPEEDX's first president, Art Glover. Now I've got to wait a whole year before I can go back.

Take a good look at that masthead. Thanks to Alan Mayer for Dahomey and Sao Tome and to Bruce Baron for Tanzania, all previously unreported this year, we are now three countries ahead of the 1974 total for the entire year--and we still have four months to go. Where's that Ulan Bator, Doug? A hearty welcome to 8 new reporters and on to the loggings.

## EUROPE

- ALBANIA:** R. Peking Relay, 7120, date/fqy "Red Flag Canal" cd in 30d air, no rp + sked (REDMAN IL), date/fqy "Deep in Study" cd in 2 wks air, no rp (FLEMING NY). Why not, Kevin? You know where it came from. bc
- BELGIUM:** ORU, 6055, usual date/fqy map cd in 96d air (YAJKO PA)
- BULGARIA:** R. Sofia, 9700, date/time "Ohrid University" cd in 60d for MS (BOYCE WA), same in 117d for no rp (YAJKO PA), f/d "Nessebur" cd in 7 mo (FLEMING NY)
- CZECHOSLOVAKIA:** R. Prague, 5930, f/d black/white cd of Demanova Caves in 51d air for no rp (ROBINSON AL); 7345, f/d Zamek castle cd in 44d air, no rp (SMITH FL), f/d cd of young girl handing flowers to soldier (30th anniversary of the liberation of Czechoslovakia by the Soviet Army), 46d air (HOFFMAN PA); 940, castle cd in 60d for MS (BOYCE WA); 11990, 30th anniversary cd in 46d air, no rp (SMITH FL) NJ
- DENMARK:** R. Denmark, 15165, f/d Radiohouse aerial tower cd in 37d air, no rp (FAMULARO)
- FINLAND:** R. Finland, 15185, f/d "Spring in Finland" cd in 17d air, no rp (FLEMING NY), f/d "Summer in Finland" cds in 13-20d for no rp to 2 IRCs (BEAL WA)(DEATON CA)(YAJKO PA)
- FRANCE:** R. France Internationale, 15120, old ORF cd in 7 wks air (WICKETT MD); 15140, f/d station cd in 2 mo air for 1 IRC, FF rpt (WOOTTEN MD); 15160, f/d blue "Telediffusion de France" cd in 50d air for no rp, FF rpt (EICHENHORN MI); 15300, TDF cd in 25d air for no rp, FF rpt (QUINN NY), same in 6 wks for FF rpt (FLEMING NY), same in 30d for 1 IRC, EE/FF rpt (BIXBY CA)
- GERMANY (Democratic Republic):** RBI, 9730, f/d green cd w/castle outline and antique car in 30d air for EE rpt and no rp + request for reports v/s Rudi Friedel (VECCHIOLA PA); 15255, f/d cd (no desc) + pennant in 43d air for 1 IRC, EE rpt (KELLY'S TN)
- GERMANY (Federal Republic):** Deutsche Welle, 6075, f/d cd w/multicolored circles in 194d air, no rp, EE rpt (QUINN NY); 6120, same in 60d, no rp SPEEDX form (WICKETT MD)
- GREAT BRITAIN:** BBC, 9580, Thames cd in 58d, for 1 IRC (MARTI CA); 15070, same in 32d, no rp (ZINK CA)
- R. Canada Relay, 9685, new, no data RCI cd in 37d, no rp (CHAFFIN TN)
- VOA Relay, 5995, Kennedy Center cd in 9d (MARTI CA); 7230, Capitol cd in 8d (QUINN NY)
- It's Woodferton, Walter, with two o's and two f's. bc
- HOLLAND:** R. Nederland, 6165, p/c "His/Hers/Theirs" cds in 7 and 110d (TESTA'S MA); f/d "New Lutheran Church" cd in 11d for 2 IRCs (YAJKO PA); 9715, f/d engraved cd showing Holland's Capitol" in 16d air for 2 IRCs (NUTTER KY); 11730, New Lutheran Church cd in 18d air (HARDING CA); no fqy, cows in farm pasture, 9d air (SCANNELL MA). Again, I'm in no position to argue, but are you sure -- WRTH lists 6165 as exclusively a Bonaire fqy; 9715 and 11730 are used by both Bonaire and Lopik (plus Talata for 11730). Please be sure these actually originated in Lopik! Otherwise, credit to Bonaire or Talata. bc
- HUNGARY:** R. Budapest, 6000, f/d purple cd w/undidentified bldg in upper left corner, in 52d sfc for 2 IRCs, + pennant (ROBINSON AL); 9833, f/d blue castle cd in 50d air for no rp, v/s Mari Soter (REDMAN IL), same in 75d air, no rp (BEAL WA)
- ITALY:** RAI, 9575, f/d cd w/painting by Giambattista Tiepolo in 60d air for 1 IRC (SVINICKI MI), f/d cd w/painting "Il Settecento Italiano" in 82d sfc for 1 IRC (YAJKO PA) f/d blue/white cd w/lady, boy and cow in 54d for 1 IRC (LAVES TX)
- LUXEMBOURG:** R. Luxembourg, 6090, f/d coat of arms and antenna cd in 35d for 3 IRCs (CREWS FL) and in 102d for 2 IRCs (PIMBLETT ALB)
- MALTA:** CBC Relay, 6100, f/d cd in 34d w/site (WHITE FL)
- Deutsche Welle Relay, 6100, f/d colored circle cd in 24d air, no rp (SCANNELL MA)

NORWAY: R. Norway, 11850, f/d "Norsk Folkemuseum, Oslo" cd in 13d air, no rp (TOMORI HI); 15175, same cd in 14d air for MS (YAJKO PA)

POLAND: Polish R., 9640, 30th anniversary cd in 90d for MS + station pin (BOYCE WA). Are you sure about that fgy, Dennis? WRTH lists 9540. bc 11815, same cd + tie pin and long ltr from Lech Stanislawski in 26d air for 2 IRCs (SANSERINO CA)

PORTUGAL: R. Portugal, 6025, f/d color cd of naval escort ship "Sagres" in 14d air for 2 IRCs (THOMPSON NM)

ROMANIA: R. Bucharest, 5990, f/d Television Center cd + ltr in 63d air for no rp (FAMULARO NJ)

SPAIN: RNE, 6065, f/d antenna cd + sked in 110d sfc for no rp and EE rpt (SMITH AL), same in 47d air for no rp (FAMULARO NJ)

SWEDEN: R. Sweden, 11705, 50th anniversary cd in 2 wks air for no rp (NEBRON CA), same cd in 28d air for no rp + record from Saturday show v/s Gurriel Burg (SCANNELL MA)

SWITZERLAND: SBC, 5970, f/d cd "Old Bridge near Intragna", in 6 wks for no rp (FLEMING NY)

9725, f/d "Carnival of Basle" cd, in 50d sfc, no rp v/s J.A.Chisholm (SMITH AL)

USSR:

Byelorussian SSR: R. Moscow, 7100, site Orsha, Grand Kremlin Palace cd in 34d air (PIMBLETT ALB)

Latvian SSR: R. Riga, 5393, f/d colored cd w/address on cover in EE + sked, in 98d sfc for EE rpt and no rp, v/s Lena Brjantseva (MAYER IL)

Lithuanian SSR: R. Moscow, 11870, site Kaunas, f/d cd w/picture of Soviet rocket launch, in 24d air (MAYER IL)

RSFSR (European): R. Moscow, 7100, 7200 (Armavir), 9500, 9530, 9680, 11770, (all sites Moscow xopt as noted), f/d cds Grand Kremlin Palace (BOYCE WA)(REDMAN IL)(SMITH FL), View of Kremlin from Moskva River (MAYER IL)(SMITH FL), tall buildings (PIMBLETT ALB), Sputnik Memorial (SMITH FL) in 22-42d air for no rp

R. Peace and Progress, no fgy, cd and ltr + sked in 29d air, no rp (KELLY'S TN)

Ukrainian SSR: R. Kiev, 7150, abstract "tree" design cd in 2 mo air, f/d, no rp and EE rpt (VECCHIOLA PA); 7400, circle and triangle cd, f/d in 96d air (SMITH FL); 9665, "R. Kiev" circle cd, f/d in 31-46d air (DEATON GA)(CHAFFIN TN); 12050, f/d cd w/stn symbol in 53d (MARTI CA); 12870, f/d circle cd in 62d air (ZINK CA)

R. Moscow, 9700, site Nikolayev, f/d Kremlin cd in 24d air (MAYER IL)

VATICAN CITY STATE: Vatican R., 9605, f/d "Control Room" cd in 50d sfc, no rp (SMITH AL) same in 20d air, no rp (BEAL WA); 11700, same cd in 23d air, no rp (QUINN NY); 11740, f/d color photo of gardens near Vatican Radio Bldg, 17d air, no rp (SMITH FL); 11845, f/d cd, picture of Pope Paul VI, in 12d air, no rp (SCANNELL MA)

YUGOSLAVIA: R. Belgrade, 9620, two f/d folder cds for two rpts (picture of Piran and picture of Rovin) in 129d air, no rp, EE rpt (PIMBLETT ALB)

## AFRICA

ASCENSION ISLAND: BBC Relay, 9510, Thames cd in 29d sfc, no rp (CHAFFIN TN)

VOA Relay, 15125, Capitol cd in 14d sfc (MAHONEY IN)

DAHOMY: Rdif. Dahomey, 4870, f/d multicolored cd w/Dahomey scenes, in 103d air for FF rpt and 1 IRC, sked on back (MAYER IL)

EGYPT: R. Cairo, 9475, f/d cd w/view of Alexandria in 2 mo, no rp (WOOTTEN MD), same in 70d for 1 IRC (BIXBY CA), f/d Luxor Temple cd in 38d air, 2 IRCs (THOMPSON NM); 9805, f/d color cd w/view of Kasr el Nil Bridge, Cairo, in 93d air, no rp (SMITH FL)

IVORY COAST: R. Abidjan, 11920, "SWL" cd, f/d in 3 wks for 2 IRCs, FF/EE rpt (FLEMING NY)

LIBERIA: ELWA, 4770, African drummer cd in 346d sfc for MS, EE rpt (BROOKS CT)

MOROCCO: VOA Relay, 15205, Capitol cd in 7d for no rp (BARON PA)

NIGERIA: V of Nigeria, 7275, usual f/d green/white flag cd in 32d for no rp and EE rpt (QUINN NY), same in 30d, no rp (EICHENHORN MI), same in 24d for 1 IRC (BEAL WA); 15185, same cd, no time stated, no rp (BERNSTEIN GA)

SAO TOME: Emissor Reg. de S. Tome e Principe, no fgy stated (4807 WRTH list), f/d green cd w/jungle photo in 269d air for 1 IRC, EE rpt (MAYER IL)

SIERRA LEONE: SLBS, 3316, f/d form ltr (copy on next page) in 105d for 2 IRCs, EE rpt, v/s E.P.Roberts (LEISTNER'S CA); 5980, same in 49d for 2 IRCs, EE rpt (SNYDER CA)

SOUTH AFRICA: RSA, 5980, 7270, 9525, 9695, 15220, 21535, f/d cds in 15-45d for no rp to 2 IRCs. "City of Gold" (EICHENHORN MI)(NUTTER KY), Nyala Ram (CHAFFIN TN), Flamingos (DEATON GA), White rhino and calf (NEBRON CA)(REDMAN IL)(SMITH FL), Johannesburg at night (DEATON GA), Johannesburg from Carlton Centre (SMITH FL)(SNYDER CA)(THOMPSON NM)

SABC, 3250, usual industries cd in 20d air for no rp (EICHENHORN MI)

SPANISH SAHARA: R. Sahara, 11805, folder cd in 27d for SS rpt, 1 IRC (WICKETT MD)

SWAZILAND: Swazi Musicradio, 4980, f/d form ltr in 22d air for 2 IRCs, EE rpt, v/s J. Tomlinson (PIMBLETT ALB), f/d handwritten ltr in 4 mo sfc for 2 IRCs, EE rpt, v/s Stan Gobbi (FLEMING NY)

TANZANIA: R. Tanzania, 15435, green/red/white Sauti Tanzania studio bldg cd in 135d for 1 IRC, v/s S.A.B. Dedi, Chief Eng. (BARON PA)

TOGO: Rdif. du Togo, 5047, f/d globe cd w/sked on reverse, in 18d air for no rp and EE rpt (FAMULARO NJ)

Nothing in the world is friendlier than a wet dog.



23.04.1975

To: Mr. Lewis A. Leister

3363 Peckham Avenue **Sierra Leone Broadcasting Service**

San Bernardino Telephone 4711 Cables Broadcasts

California 92405 New England, Freetown

U. S. A.

Short Wave Radio, Transmission details.

Frequency: (MHz)	Wavelength: (Metres)	Time (G.M.T.)	Power to Aerial (kW)
5.980	49	0745-1015; 1230-1740	10
3.316	90	0555-0730; 1745-2330	10
5.980	49	0555-1015	250 KW
9.630	31	0600-1030; 1230-1745	250 KW
			250 KW

Aerial: 4 Element, Vertical Incidence Horizontal Array.

Station Identification: Sierra Leone Broadcasting Service  
(National Radio and Television Broadcasting Service).

Dear Mr. Leister

The SLBS acknowledges receipt of your reception report (S)/letter for 27 February 1975

We thank you for your Correspondence, and are pleased ~~to confirm~~ ~~we cannot confirm~~ that the Signals you heard on 3.316 MHz 90 Metres. From 0658 to 0728 G.M.T., Originated from our transmitter in W. Freetown

- ✓ Your timing is correct. Station identification is incorrect.
- ✓ Programme details given are insufficient. Programme details do not coincide with our Station log.
- ✗ Please find enclosed a copy of our programme Schedule. Thank you for the recording.
- ✓ Thank you for your technical details. Any additional information will be sent on request.
- ✓ Additional Information requested is on an attached sheet.

Yours Sincerely,

REPek

G.F. Roberts,  
Engineer-in-Charge.

ASIA

- BRUNEI: R. Brunei, 7215, date/fqy map and mosque cd in 19d air for 1 IRC (BIXBY CA), same in 21d for 2 IRCs v/s N.J.A. Frigout, Chief Eng. (THOMPSON NM)
- BURMA: BES, 5040, f/d black/white pc in 70d air for 3 IRCs, v/s U. Kyaw Nyein (RADTKE CA)
- CHINA (People's Republic): R. Peking, 7120, date/fqy cd of porcelain figures "Skipping" in 18d air (SMITH FL), no fqy, f/d cd of porcelain figures "Deep in Study" in 22d air, + two pcs (SMITH FL)

CHINA (Republic): WOFC, 17720, f/d cd "Fine glazed twin jars" in 116d sfc, no rp (MEEHAN CA); 17890, same in 37d air for 1 IRC (BIXBY CA), f/d cd, painting by Chang Ta-Chien, 119d sfc, no rp + 7 pamphlets on country and arts (MEEHAN CA)

INDIA: AIR, 9912, f/d cd of ancient painting "Lady writing a love letter", 6½ mo air for 1 IRC (VECCHIOLA PA), f/d Buddhist monastery cd in 206d (BARON PA); 11719, f/d Buddhist monastery cd w/wrong date in 206d for 1 IRC, v/s M.R. Ali (BARON PA); 11810, f/d cd, painted storks in 8 mo air, no rp v/s G.K. Mathur (RADTKE CA), f/d cd "Lady at her toilette" in 140d air for no rp, v/s N. Ral (SMITH FL)

INDONESIA: RRI Ambon, 3241, f/d studio cd and personal ltr in 5 mo air for MS (used) and Indo rpt, v/s J. Nendissa (cd) and A.W. Rakimin (ltr) (WOOTTEN MD)

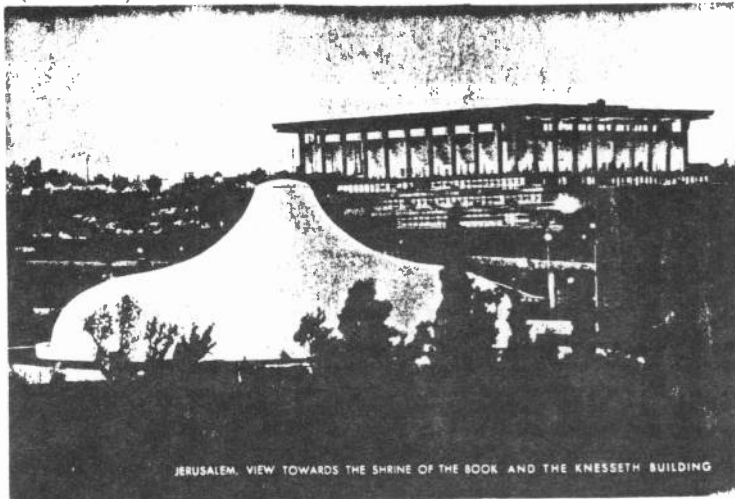
RRI Yogyakarta, 5047, f/d plain white cd w/RRI logo on front in 46d for 2 IRCs and Indo rpt v/s Mrs. Roekmi Sutadi (MAHONEY IN)

RRI Sibolga, 5260, long f/d ltr of confirmation in Indonesian, w/information about the Sibolga area and some nice comments on the SPR-4, in 70d air for MS and Indo rpt, v/s Qamal Haffa (CLEVELAND CA)

IRAN: Voice of Iran, 9022, f/d color antenna cd in 23d air for 2 IRCs and Farsi rpt (THOMPSON NM) I'll be counting on you to recognize my Farsi sign one of these months, Glenn. bc 15084, f/d green cd w/pix of new NRIT bldg in Tehran, 29d air for no rp and EE rpt. (SMITH FL)

IRAQ: R. Baghdad, 9745, usual map and bridge cd + tourist guide book in 100d air, no rp (FAMULARO NJ), same in 98d air for 1 IRC (WHITE FL), same in 83d sfc, no rp (YAJKO PA)

ISRAEL: IBA, 7395, f/d Knesseth bldg cd in 41d air, no rp (YAJKO PA); 9495, f/d cd, "Shrine of the Book & Knesseth Building" (see below), in 45d air for Hebrew rpt and no rp (LEVIN NJ); 11643, same in 72d air for 1 IRC and EE rpt (DAVIDONIS MA); 12025, same in 53d air for 2 IRCs and EE rpt (ZINK CA); 15485, same in 46d air for no rp and EE rpt (SNYDER CA)



Contributed by  
Len Davidonis  
(It's pretty dark  
but we'll try it)

JERUSALEM. VIEW TOWARDS THE SHRINE OF THE BOOK AND THE KNESSETH BUILDING

JAPAN: NHK, 5990, date/fgy "Tachibina" dolls cd in 13d air, no rp (THOMPSON NM), date/fgy "Kamakura" festival cd in 13d, no rp (WHITE FL); 9505, "Tachibina" dolls cd in 10d air no rp (HARDING CA); 15105, "Tachibina" doll cd in 9d air, no rp (MEEHAN CA); 15300, same cd in 10-12d air, no rp (WOOTTEN MD)(FLEMING NY)(MARTI CA)( JACOBSON IL), date/fgy cd of doll playing the koto in 9d air, no rp (QUINN NY)

KOREA (Republic): R. Korea, 11925, f/d cd of "Royal Crown" in 52d for 1 IRC (MARTI CA)

PHILIPPINES: FEBC, 7225, f/d map of Philippines cd in 33d for 2 IRCs, v/s Joan Ross (MERCADO CA), native village cd in 42d for MS (BOYCE WA)

VOA, 15220, f/d Capitol cd in 7d air, (THOMPSON NM); 15290, JFK Center cd in 19d sfc v/s George Jacobs (PIMBLETT ALB)

RYUKYU ISLANDS: VOA, 7165, JFK Center cd in 28d sfc, v/s George Jacobs (PIMBLETT ALB)

SINGAPORE: R. Singapore, 11940, f/d "Singapore by Night" cd in 17d for 2 IRCs (LAVES TX)

TURKEY: TRT (Voice of Turkey), 11880, f/d cd of humorist Nasreddin Hodja, in 96d air for 1 IRC and EE rpt (WHITE FL)

USSR:  
RSFSR (Asiatic): R. Moscow, 9580 (Blagoveshchensk), Sputnik Memorial cd + pennant in 34d air (PIMBLETT ALB); 15210 (no site), f/d cd of Kremlin Palace in 30d (MARTI CA); 17720 (Petropavlovsk-Kamchatsky), cd w/view of the Kremlin in 34d air (PIMBLETT ALB)

YEMAN ARAB REPUBLIC: R. Sanaa, 5805, f/d form ltr (see next page) in 2 mo air for 3 IRCs and EE/FF rpt, v/s Hussein Nunu (WOOTTEN MD)

Beware of the man who says he runs his own home. He'll lie about other things, too.

YEMEN ARAB REPUBLIC  
Ministry of Information  
Radio Sanaa

الجمهورية العربية اليمنية  
وزارة الاعلام  
اناعة صنعاء

To  
Mr/MRS/MISS Charles A. Wootton  
Address: Bethesda / USA  
.....

Sanaa, 24th May 75.

Dear Sir,

with great pleasure we received Your reception report for the short - wave programme of Radio Sanaa.

In the following we are glad to confirm Your submitted datas:

R A D I O S A N A A

Frequency: 5805 kHz .....

Date of reception: 5th April 75 Time of reception: 03 25 GMT

by Mr/Mrs/Miss Charles A. Wootton.....

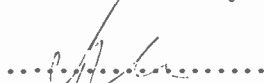
in Bethesda / USA.....

SINFO - Code reported: 3/2/2/2/2 .....

The programme details mentioned in Your report had been checked and found correct.

Thank You for listening Radio Sanaa and kind regards from the YEMEN ARAB REPUBLIC,

Yours faithfully

  
.....  
(ing. Hussein Hanu)

Technical Director of  
Radio Sanaa

OCEANIA

AUSTRALIA: R. Australia (f/d cds, v/s Peter Homfray), 5995, 9570, 9580, 11740, 11765, 15160, 15240, 15320, 17715, 17740, 17795 in 15d for MS, 19-40d for 1-2 IRCs, 81-121d for no rp (no rp got sfc mail): Aboriginal cave paintings (MARTI CA), "Stanley Chasm" (MARTI CA), Nocturnal sugar glider (DuRANT THAI)(HARDING CA)(MEEHAN CA)(MARTI CA)(QUINN NY)(SMITH FL)(THOMPSON NM); surf lifesaving boat (HARDING CA)(QUINN NY)(SMITH FL)(THOMPSON NM)(BROOKS GT); Koala and baby (DuRANT THAI)(MEEHAN CA)(QUINN NY)(SMITH FL - 2 cds)(TESTA'S MA)(YAJKO PA); bear cd (NEBRON CA). OK, Larry, I'll bite again. Though Zoo la-1b was many years ago, I don't recall any bears in Australia. A zoo, maybe? bc ABC Perth, 9610, f/d map cd of Western Australia in 95d air for 2 IRCs (YAJKO PA)



NEW CALEDONIA: R. Noumea (ORTF), 7170, f/d antenna/map/fighting cock cd in 30d air for 2 IRCs and EE rpt (4th try), v/s Le Leizour - Dir. (RADTKE CA)

NEW ZEALAND: NZBC, 9540, f/d form ltr + sked in 43d air for 1 IRC, v/s I.M. Buist (WHITE FL); 15110, f/d "snow capped volcano" cd in 30d air for 1 IRC (MARTI CA), same in 30d (RADTKE CA), f/d NZ countryside view in 30d, no rp (REDMAN IL)

PAPUA NEW GUINEA: R. New Ireland, 2428, f/d NBC letterhead typed form ltr in 439d air for 3 IRCs, EE rpt (still "organizing") (SNYDER CA)

R. Bougainville, 3322, fgy only, plain white Dept. of Information cd in 43d air for EE rpt and 2 IRCs (MAHONEY IN)

NBC, Port Moresby, 4890, f/d ltr in 91-378d for MS or 2 IRCs, v/s Allen Hull or (for the 91d reply) Carolus Ketsimur--Director (BROOKS CT)(THOMPSON NM)(WOOTTEN MD); 9520, same ltr in 21-361d for 1-3 IRCs (LEISTNER'S CA)(ZINK CA)(MERCADO)(RADTKE CA)(HARDING CA)(BIXBY CA)(PIMBLETT ALB). Looks like C. Ketsimur (21d reply) accepted the challenge to "reorganize". bc

TAHITI: R. Tahiti (ORTF), 11825, usual f/d "thumbs up" cartoon cd in 85d air for 2 IRCs and FF rpt on SPEEDX form (CLEVELAND CA)

## S. AMERICA

ARGENTINA: RAE, 9690, f/d blue/white modern "check design" cd in 97d air for 2 IRCs and EE rpt (WHITE FL)

BOLIVIA: R. Panamericana, La Paz, 6035, SS ltr w/veri statement, xmtr info in 143d air for 2 IRCs, v/s Jaime Vásquez de la B. (BARON PA)

BRAZIL: R. Bandeirantes, São Paulo, 11925, no data ltr in 46d air for 1 IRC and EE rpt v/s Samir Razuk (BEAL WA)

R. Nacional de Brasilia, 11780, f/d map cd in 58d air for 1 IRC and EE rpt + pennant (MAHONEY IN), cassette tape returned w/Brazilian mx in 6 mo air for 3 IRCs (WOOTTEN MD); 15245, f/d map cd in 2 wks air, no rp, EE rpt (EICHENHORN MI)

CHILE: R. Presidente Balmaceda, 9590, date only blue/red/white station logo cd + logo decal in 40d air for 1 IRC, EE/SS rpt (BIXBY CA)

R. Nacional del Chile, 11810, f/d cd in 115d for 1 IRC, EE rpt, v/s Gustavo Heitman S. (WICKETT MD)

COLOMBIA: La Voz del Huila, Neiva, 6150, SS ltr in 74d for 1 IRC (SMITH TN), no data personal ltr in 18 wks air for MS and SS rpt + green/yellow pennant (WOOTTEN MD). Both ltrs signed by v/s Irma Q. de Melo



Above is an interesting card received in 1937 by Dempsey Crews. The station is no longer listed. I would appreciate receiving copies of old cards from any country, and will run them from time to time, space permitting, for their historical interest. bc

ECUADOR: HCJB, 5970, 9560, 11910, 11915, 15115, f/d cds, v/s Sam Rowley, in 12-210d for no rp, 22-35d for 2 IRCs: Mt. Illinizas (QUINN NY)(FLEMING NY), Mt. Antisana (QUINN NY)(MERCADO CA), Mt. Cotopaxi (MERCADO CA)(BROOKS CT), "Mountain" (NEBRON CA), "Wood Carving in Ecuador" #1 (MERCADO CA)(NEBRON CA)(SCANNELL MA)(HARDING CA)(FAMULARO NJ)(YAJKO)(SMITH FL)(THOMPSON NM)(LEVIN NJ -- also rcvd pennant)

GUYANA (Republic): GBS (Action R.), 3290, f/d form ltr w/tech info on stn in 13d air for no rp (WHITE FL)

PERU: R. Atlantida, Iquitos, 4788, SS no data ltr of confirmation in 10 wks air for SS rpt and MS (used), v/s Julio Reátegui Burga (WOOTTEN MD), same in 115d (WICKETT MD)

PERU (continued):

R. America, Lima, 9505, date/fqy letterhead ltr in 22d for 2 IRCs and SS rpt (CREWS FL)  
VENEZUELA: Rdif. Venezuela, 4890, no data photo cd w/"DJ's" on front & "100 horas -- Record Mundial" in 35d for 2 IRCs and SS rpt (MEEHAN CA)  
 R. Juventud, 4900, date/fqy teenage dancers cd in 56d sfc for 2 IRCs, SS rpt & tape (WHITE FL)  
 R. Rumbos, 4970, f/d "La Casa Fuerte" ruins cd in 117d for 1 IRC (BARON PA), f/d cd "Colonia Tobar" in 3 mo air for 2 IRCs and SS rpt (FLEMING NY), f/d "Legislative Palace" cd in 52d for 1 IRC and Gilfer form rpt (LAVES TX), f/d cd of Guaiqa Indian climbing Pijiguao Palmtree in 158d sfc for 2 IRCs, SS rpt and tape (WHITE FL)  
 R. Continente, 5030, no data photo cd of stn + ltr w/veri statement, in 3 mo air for no rp, SPEEDX form, v/s Hilda Almeyda F. (REDMAN IL)

N. AMERICA

BELIZE: R. Belize, 3300, f/d map cd in 77d air for 1 IRC, EE rpt (PIMBLETT ALB)  
CANADA: RGI, 5970, 6085, 11825, 15305, 15325 + some w/no fqy listed, new no data cds in 13-46d (WOOTEN MD)(WINSLOW WI)(HARDING CA)(VECCHIOIA PA)(SMITH FL)(THOMPSON NM) (QUINN NY) (NEBRON CA)(BROOKS CT), f/d World Cycling Championships cd in 30d (QUINN NY) BBC (Sackville Relay), no data Thames cd in 50d air (CHAFFIN TN)  
 CBC Northern Service, 5960, 9625, 9755, 11720, f/d Eskimo "bear sculpture" cd in 11-24d for no rp or 1 IRC (CREWS FL)(MONTGOMERY HI)(VECCHIOIA PA)(CHAFFIN TN)  
 CFRX Toronto, 6070, date/fqy multicolor "carnival" abstract cd in 10d air, no rp, v/s C. Eastwood (VECCHIOIA PA)  
COSTA RICA: Faro del Caribe (TIFC), 9645, cd in 12d air for EE rpt and MS (WICKETT MD)  
CUBA: R. Habana, 17885, f/d multicolored "test pattern" cd in 100-135d for no rp or 2 IRC and EE rpts, v/s Maria Triana (BROOKS CT)(NUTTER KY)  
EL SALVADOR: R. Nacional de El Salvador, 5980, fqy only blue/white antenna cd in 15 mo air for no rp and SS rpt, v/s L. Heredia, Dir. (RADTKE CA)  
GUATEMALA: R. Cultural, 3300, f/d Quetzal Bird cd in 2 wks for MS (WICKETT MD), same in 121d for 1 IRC (BARON PA), same, no time, for 1 IRC (SMITH FL); v/s Wayne Berger  
 La Voz de Nahuala, 3360, f/d station cd in 9 mo air for MS (used) and SS rpt + pennant (WOOTEN MD)  
HAITI: R. St. 4VEH, 11835, f/d "Vertiers Memorial" cd in 72d sfc for 2 IRCs (WHITE FL), same in 119d sfc for 1 IRC (YAJKO PA); v/s Mrs. Edna Beachy  
HONDURAS: R. Progreso, 4920, f/d ltr w/xntr info + pennant in 19d air for 2 IRCs and SS rpt, v/s Jerry E. Tolle (DEATON GA)  
MEXICO: R. Universidad de Sonora, 6115, no data white/gray cd w/EE/SS stn info in 35d air for 1 IRC and EE/SS rpt (BLXBY CA)  
NETHERLANDS ANTILLES: R. Nederland, 6165, f/d "Round Lutheran Church" cd in 11d, no rp (QUINN NY), same in 5 wks (NEBRON CA), "Westerkerk" Church cd in 9d, no rp (FLEMING NY), same in 30d + pennant (SMITH AL), same in 5 wks (WOOTEN MD), "Church" cd in 3 wks, no rp (NEBRON CA), f/d cd of Amsterdam, #2 in series, 30d air, no rp (EICHENHORN MI), UDXI cd in 102d for 2 IRCs (QUINN NY)  
 TWR, 11815, f/d "Flamingo" cd in 16d air for 2 IRCs, EE rpt, v/s D.J. Beans, C/Eng. (CREWS FL), f/d antenna cd in 11d air for 3 IRCs, EE rpt, v/s Julius F. Schipper, (THOMPSON NM)  
UNITED STATES: AFRTS, 9700, 15330, usual f/d Armed Forces seals cd in 6-7d, no rp, (CHAFFIN TN)(MAYER IL)  
 KGEI, 9615, 15280, f/d San Francisco scene cd in 14-35d sfc for 10¢ or 3 US airmail MS, + pennant, bumper sticker, literature, sked, etc. (ROBINSON AL)(SMITH FL)  
 VOA, 6055, 9565, 9230, 17820, 21485, 21500, time/fqy JFK Center cds in 5-12d, v/s Monica Vall (my old cards were signed Monica Vallandingham--wonder if she changed it legally or just got tired of writing the whole thing?? bc) (FLEMING NY)(CHAFFIN TN)(SCANNELL MA - 2 cds)(THOMPSON NM - 2 cds)  
 V of the OAS, 15170, date only plain white cd in 2 wks for EE rpt and no rp (FLEMING NY)  
 WINB, 15185, 21580, f/d black/white cd in 6-7d, no rp + sked v/s Rev. John M. Norris (MERCADO CA)(ROBINSON AL) Nancy reports that station literature says the good Reverend is deceased. Just shows what you can learn from VOA--they used that 30th anniversary cd for years! bc  
 WFYR, 9525, 11720, microphone cd in 17d sfc, no rp, v/s "Arthur" (CHAFFIN TN)



Well, we made it again with an inch and a half to spare (before reduction). I was rather surprised that no one got last months sign "SLOW--MEN WORKING" in Finnish, courtesy of Ms Robin Majors, who sent my sign list to friends in Finland for translation. An easy one this month, with two (count 'em--two) big clues--it's rather common among certain European stations, and (now hear this) it is not a national language! If that doesn't give it away, nothing will! Here we go -- RESTIGO MALPERMESATA Take a guess--help out HAP.  
 Still some suspect fqys. I doubt HCJB<sup>on</sup> both 11910 and 11915 and Port Moresby on 4820 (I didn't even put that one in) has to be a very rare catch.  
 That's it for another month. '73's and good DX. *Bill* 7/17/75

# Tips and Topics

The Feature Section of SPEEDX

EDITOR: ARTHUR S. GETZEL - 70-29 KISSENA BLVD - FLUSHING - NY 11367

For this August issue of SPEEDX, I am bringing you a list of DX programs heard around the shortwave dial by Joesph Smith. I hope this list will be a great help to all of you during these summer months.

Australia DX'er's Calling 100% DX tips and news on up-to-date SWL stations, and DX reports from DX'er's and club magazine.

SUN: 1200-1210 9580 NA English  
MON: 0215-0225 15320/17795 NA English

Belgium Belgium Calling DX'ers 100% DX tips and news from club magazine and DX'ers in the world, club news, pirates. The DX program of Belgium is on every second and fourth week.

MON: 2255-2315 9730/11855 NA English  
TUE: 0040-0100 6080/9730 NA English

Bulgaria R. Sofia Bulgaria Calling 70% DX tips from Bulgaria DX'ers, 30%

amateurs news, talks about SWL hobby, listener's letters  
SAT: 0015-0025 9700 NA English  
SAT: 0415-0425 9700 NA English

Canada RCI - Radio Canada Shortwave Club 50% technical, technical mailbag

(about all answered by mail), talks about the SWL hobby, talk on HAF/CHAP 1st of month, IS+ID signals of different SWL stations in the world.  
SAT: 1200-1215 5970/9655/11825/15175 NA English  
SUN: 0140-0155 6085/9650/11940 NA English  
SUN: 0440-0450 6135/9655 NA English  
SUN: 0540-0550 6135/9655 NA English

Czechoslovakia R. Prague-Monitor Club 95% technical, technical mailbag, amateurs news,

talks on the SWL hobby, some music.  
FRI: 0140-0150( 5930/7345/9540/9630 NA English  
PRI: 0340-0350( 9740/11990

Ecuador HCJB - DX Party Line (Three different shows a week), 30% DX tips and news from

DX'ers, listener's letters, Club news, talks on the SWL hobby, religion talks, one music number.  
TUE: 0230-0300 5970/ 9560/11910 NA English  
THU: 0230-0300 5970/9560/ 11910 NA English  
SUN: 0230-0300 5970/9560/ 11910 NA English

Finland FINN DX NOTE: R. Finland might drop English transmission in mid

1975. 70% DX news, talks on SWL stations, talks on the SWL hobby.  
TUE: 1413-1428 15185 NA English  
TUE: 2313-2328 15185 NA English

Great Britain BBC - World Radio Club 40% technical, technical mailbag, 04% DX news, one

country every other month, talk about DXing outside the SWL bands, weekly propagation condition report.  
WED: 1330-1345 15070/17790 NA English  
WED: 2315-2330 5975/6055/6175/9510/7325 NA English  
9580/9915/11750/11780/15070  
FRI: 2100-2115 9580/15260/17740 NA English

Holland

R. Nederland - DX Juke Box 40% technical, technical mailbag, DX tips from

four parts of the world, Radio Spectrum Course, club news, new equipment, talk outside the SWL bands, four music numbers.

THU: 2147-2223	9715/11730(L)	NA	English
FRI: 0217-0253	6165(B)	NA	English
FRI: 0507-0543	6165/9715(B)	NA	English

HungaryCalling DX'ers and Radio Amateurs  
100% DX tips and news from club and

DX'ers in the world, some amateurs news.

WED: 0400-0415	6000/7250/9833/9585/11910	NA	English
SAT: 0400-0415	15220/17710	NA	English

IsraelCalling All Listener's DX news  
about Israel radio and IBA. 90%

listener's letters, some music on each program.

SAT: 0200-0220	9815/12025/15485	NA	English
----------------	------------------	----	---------

JapanTokyo Calling 100% DX tips and news,  
talks about R. Japan in "Week in

Review", some music on each program.

MON: 0015-0035	15270/15300	NA	English
MON: 0200-0220	15195/15420/17725/17825	NA	English

Netherlands AntilliesWR Bonaire - DX Special 100% DX  
news and tips from DX clubs and

DX'ers. Club news, religion talks, some music.

THU: 0045-0100	11815	NA	English
SAT: 1205-1220	11815	NA	English

NorwayDX Radio Norway 95% DX tips and news,  
talks on the SWL hobby, some BCB news

Program is on the first week of the month.

SUN: 1420-1428	17795	NA	English
SUN: 1620-1628	15175/17795	NA	English
MON: 0020-0028	9645/11860/15175	NA	English
MON: 0220-0228	618r/9645/11860	NA	English
MON: 0420-0428	9645/11860/11870	NA	English
MON: 0620-0628	11870	NA	English

PortugalDX Magazine of Portugal Note: This  
DX program might be off the air dueto the present political situation. However, Radio Portugal said it  
will return. The program is not on every week.

SAT: 0245-0300	6125/11935	NA	English
SAT: 0445-0500	6025/11935	NA	English

RomaniaR. Bucharest DX Club: 90% technical,  
10% DX tips and news, lots of amateur

news, talks about the SWL hobby, listener's letters.

THU 0215-0227	5990/6150/6190	NA	English
& and	9570/9690		
SAT 0415-0427	11790/11940		

South AfricaRSA - DX Corner 50% technical,  
technical mailbag, talks about the SWL

hobby, 50% DX news on African stations only.

WED: 2307-2312	5980/9525/9695/11900	NA	English
----------------	----------------------	----	---------

SwitzerlandSEC - Swiss Shortwave Merry-Go-Round  
40% technical, technical mailbag,some DX news, talks outside the SWL bands, mostly talks on amateur news,  
club news, monthly propagation condition reports. Program is on every  
second and fourth week.

SAT: 1320-1340	15140	NA	English
SUN: 5965/6135/9725/11715	0150-0210	NA	English
SUN: 0435-0455	9725/11715	NA	English

SwedenR. Sweden Calling DX'ers 100% DX  
tips and news from DX'ers and clubmagazines, up-to-date DX news, club news, pirates news, unidentified  
stations.

TUE: 1248-1258	15310	NA	English
TUE: 1418-1428	15310	NA	English
TUE: 2318-2328	6035/9605/11705	NA	English
WED: 0248-0258	9695/11705	NA	English

TURKEY

Voice of Turkey DX Program 100%  
DX tips and news, QSL information

about VCT, five music numbers.

SAT: 2215-2235	9515/11880	NA	English
----------------	------------	----	---------

USSR Radio Kiev

R. Kiev DX Program 95% DX and  
amateur news of USSR, technical, list-  
ener's letters, some music on each program. Program last week of the  
month.

FRI: 0040-0050	9600/9665/9720/11720/12050	NA	English
	15210/15240/17720/17900		
FRI: 0310-0320	7150/9520/9610/9720/11720	NA	English
	12050/15210/15240/17720		

USSR Radio Moscow

DX Program of Moscow 100% amateur news  
of the USSR, technical, technical

mailbag, no DX news, no music.

THU: 2315-2320	9500/9520/9660/11720/11750	NA	English
FRI: 0015-0020	11770/11790/11870/12050/15210		
	15240/17720/17900		
FRI: 0315-0320	9520/9660/9700/11770/11790/11970	NA	English

This list of DX programs to North America has its times and dates in GMT and its frequencies in kHz. Transmissions, frequencies, and programs are subject to change due to weather conditions and interference. Most times are approximate--tune in early.

---

CRYSTAL CALIBRATORS FOR THE DX'ER

by Robert F. Leamy

The use of a crystal calibrator in DXing can aid materially in determining the exact frequency a receiver is tuned to. For this reason a calibrator is an excellent addition to a DX'ers equipment.

There are several calibrators on the market, both kit form and wired, which provide marker intervals down to 5 kHz. The advantage of such a unit over the usual 100 khz calibrator can be readily seen.

Two calibrators with which I am familiar are the units made by Polomar Engineers, Box 455, Escondido, California 92025 and Data Engineering at 555 1/2 Fort Royal Road, Springfield, Virginia 22151. Both calibrators are excellent units. However, the selection of marker intervals on Data Engineering's FLS-3 is somewhat greater. The FLS-3 provides markers every 100, 100, 50, 25, 10, and 5 kHz. These intervals are switch selected from the front panel.

A very detailed review of the FLS-3 was written by Bob Foxworth of the National Radio Club and appeared in the 1-9-74 issue of the club publication "DX News." The article details how the unit functions and provides data on several modifications which make the unit more flexible in operation. Methods of connecting the unit to various types of receiver inputs are discussed. A reprint of Bob's 8 page review can be ordered from the National Radio Club, Box 127, Boonton, NJ 07005. Ask for reprint R-17 which costs 6.00 for members and 8.00 for non-members.

If you are technically inclined and would like to build your own calibrator; plans are available for a unit giving markers at a 1 kHz interval. The May 1972 issue of "QST" magazine has a construction article by A. C. Beresford (VE7EX) of Vancouver, British Columbia. The unit utilizes integrated circuits for ease of construction and provides marker signals at 100, 20, 10, 5, and 1 kHz. By simple wiring changes two alternate ranges are possible. 100, 50, 10, 5, 1 kHz or 100, 50, 10, 2, and 1 kHz.

.....  
 Note in September for a new BCD. After all, SEPDEX is "your" club!!!!!!!  
 .....

Back issues of QST may be available at your local library or from a local ham. If you cannot locate the article, I can provide copies for 40¢ to cover duplication costs and postage.

If you are contemplating adding a crystal calibrator to your DX den one or both of the two articles mentioned above should provide invaluable information.

---

AN OPEN LETTER TO CLOSED LOGBOOKS

by Doug Snyder

I recently had the opportunity to review the membership participation statistics of SPEEDX members and afterwards, I was asked if I had any suggestions on how to improve participation in the club activities. "Well," I said, "for every DX tip or article sent in to the editors, the SPEEDX treasurer will give the contributor five dollars or a gallon of gas, which ever is worth more at the time." After I picked myself up off the floor, I admitted that that was not quite a sound idea. Therefore, to placate the treasurer of SPEEDX, I am writing this open letter to all members who rarely, or not at all, contribute to the pages of SPEEDX. Now please, don't get me wrong. I am not putting anyone down. Everyone who is a member of SPEEDX has just as much right not to report as they do to report. But if everybody exercised their right not to report, who would want to read blank pages?

My purpose in writing this is to try and find out the reasons why so many members don't report or write short articles or correspond with the editors. Being Projects Coordinator for SPEEDX, one of my own projects is to increase the participation in the club and I feel that in order to do that, I should first find out what keeps some members from doing so. Maybe you feel that your receiver is not accurate enough to send in reports with the frequencies listed, or you feel that your loggings are too common to be printed. Well, let me just say, for every problem there is a solution. It maybe that you belong to another shortwave club and report to that one instead of SPEEDX, and just read SPEEDX for reference. That probably means you value the other club more than SPEEDX. This I would also like to know--what you feel could be improved in SPEEDX in order to make SPEEDX your #1 club. So please, if you rarely or never report to SPEEDX, please drop me a line in a letter or postcard, telling me your views and/or reasons. Confidentially will be preserved and I will answer all who wants an answer. My address is Doug Snyder, 3130 Woodmont Drive, San Jose, CA 95118.

Remember, its your twelve dollars--let us help you enjoy it more. I will be waiting to hear from you.

---

Again, I hope you all enjoyed last months article written by Mark Twain. I have received many letters commenting on the article. Most comments have been quite favorable. However, I did get one letter condemning Mr. Clemens on his ignorance of the German tougue! There will always be one dissatisfied critic in every crowd.

I will not be at the ANARC convention this month because I am attending college for the summer. I already took a brief vacation in Canada early in July which was a relief from New York's humidity. Those of you who will attend the convention will definitely enjoy Montreal. Quebec has that French flavor that may lead a person to think of Europe. No, I did not visit Radio Canada on account of the fact that I was in Montreal for only a brief stay. Again, I hope you enjoy the convention and I give my regards to all who attend.

I hope you will excuse some of my typing errors this month. The reason for this is on account of the fact that I am typing during one of New York's' famous heatwaves without air conditioning which inhibits any form of scientific concentration.

I am looking for a new assistant editor. Anyone in the NY metropolitan area who is interested please contact me at my above address. Typing experience is a must. Have a pleasant August. I remain,

*Arthur*

AUGUST CONTRIBUTORS PAGE

Each Contributors name is preceded by a number. This number indicates how many SPEEDX columns a specific reporter contributed to this month. Credits for columns/sections other than SWBC, OSL and UTE are not listed here, they are recorded separately by the Membership Chairman, Art Glover.

2 BARON, BRUCE	PA.....R4C	4 MARTI, WALTER	CA...DX-160
5 BEAL, BART	VA...SB-3L3	1 MAYER, ATAN	IL...SPR-4
2 BERNSTEIN, ROGER	GA...DX-160	3 MEEHAN, JIM	CA...SX-190
6 BIXBY, MARK	CA...HA-225	2 MERCADO, MARJO	CA.....R4
2 BODELL, BOB	OR...SPR-4	2 MIKLEJEWSKI, STAN.	NM...D-7000
2 BOWEN, PETER	CAN...EDY-570	3 MILLER, AL	OH...HRO-500
1 BOYCE, DENNIS	WA...GE-PORT	3 MONTGOMERY, JACK	HI...HA-600A
4 BROOKS, ALAN	CT...DX-150A	1 MUNGAMY, CIARAN	ENG....U-800
1 BROOKER, JIM	MI...GRF-5100	1 MULLEN, WES	MT...SX-190
1 BURTON, BOB	OH.....R391	1 NEBRON, LARRY	CA...SX-190
3 CAPIII, JIM	HI...SPR-4	2 NUTTER, RON	KY...UNELC07
1 CHABAK, MIKE	CO...DX-150B	1 OLSSON, ERIC	CT...SPR-4
1 CHAFFIN, DAVID	TN...S-38-E	3 PIMBLETT, NIGEL	ALB...DX-150A
5 CLEVELAND, BIII	CA...SPR-4	2 QUINN, THOMAS JR.	NY...DX-160
3 COMPTON, KEN	MA...DX-150A	1 RADTKE, CARL	CA...SPR-4
2 CRAWFORD, WM.	SCOT...TR-6002	2 REDMAN, RON	IL...P-1660
2 CREWS, DEMPSEY	FL...DX-150B	1 ROBINSON, NANGY	AL...SPR-4
2 DAVIDONIS, LEN	MA...HA-600A	4 SANSERINO, RALPH	CA...R-392
4 DEATON, JEFF	GA...DX-160	4 SCANNELLI, MARK	MA...SW-717
1 DURANT, HENRY	THAI...SPR-4	3 SCOTT, LLOYD	FL...FRR-502
3 EARHART, KEN	PA...SX-190	1 SIMON, DAVID	NY...SX-190
3 EICHENHORN, SANDY	MI...SPR-4	2 SMITH, DAVY	AL...S-85
5 FAMILARO, RAIPI	NJ...XCR-30	4 SMITH, TOM	FL...HA-600A
1 FLEMING, KEVIN	NY...DX-150A	1 SMITH, WADE	MA...SX-190
1 FRENCH, BOB	MD...S-108	3 SMITH, WOODY	TN...TRANS-0
1 GAEDE, ALLAN	CA...HO-180	1 SNYDER, DOUG	CA...SPR-4
1 GELFAND, STEVE	NY...NC-183D	3 SVINICKI, JEROME	MI...SPR-4
1 GREEN, DALE	UT.....??	1 SZOT, KEVIN	WI...XR-390
1 GROCE, DEAN	CA...HO-180A	4 TALBOT, LARRY	WI...SB-313
2 HANDLER, STEVE	IL...SX-130	2 TANNENWALD, LEON	NY...NORMEADE
2 HARDING, BARRY	CA...DX-150A	1 TESTA, FRANK & KAY	MA...DX-150
5 HAUSER, GIENN	OK...HQ-160	5 THOMPSON, GLENN	NM...HQ-145A
3 HENNING, HERB	GA...SPR-4	2 TOMORI, ROBIN	HI...RF-1260
2 HICKMAN, MEL	OR...A-2515	3 TRUBEE, BILL	HI...SPR-4
1 HOFFMAN, CHARLES	PA...DX-160	4 UERLINGS, JIM	WA...S-120
1 HOLBROOK, HANK	MD...SP-600	1 VAN HIMBERGEN, T.	MI...DX-160
6 JACOBSON, JOSEPH	IL...S-120	4 VECCHIOIA, JIM	PA.....R4C
1 JESSEN, WILBUR	OR...R-530	2 VOKES, BOB	TX...XCR-30
3 JONES, JACK	MS...DX-150A	1 WALTERS, JOHN	NJ...R-1530
4 JUNQUA, GIB	JAPAN....R4-C	4 WHITE, JOHN	FL...SPR-4
4 KANNRY, JOE	NY...XCR-30	1 WICKETT, BOB	MD...SB-310
2 KARKI, KEN	ID...DX-150A	1 WILSON, DAVE	OH...SCOTT
3 KELLY, BOB & RITA	TN...GRF-230	3 WILSON, BOB	IL...XCR-30
1 KIYOMIYA, T.	JAPAN...SPR-4	4 WINSLOW, JOHN	WI.....??
2 LANCE, KEN	AZ...SX-190	1 WIRRELL, BOB	MA...SX-190
5 LAVES, ALAN	TX...DX-150A	1 WOOTTEN, CHARLES	MD...R-530
4 LEISTNER, LOU & E.	CA...SPR-4	5 YAJKO, BOB	PA...DX-160
1 LEVIN, JAY	NY...DX-160	3 ZIIMER, BOB	WI...SPR-4
2 MAC COY, DON	AZ...R-392	2 ZIMAROWSKI, MARK	MA...DX-150
1 MAC LENNAN, KEN	ONT.....??	2 ZINK, GEORGE	CA...SPR-4
1 MAHONEY, MICHAEL	IN...S-20R		

A big healthy welcome to 6 first time reporters, they are: Dean Groce, Charles Hoffman, Eric Olsson, Robin Tomori, John White and Dave Wilson.

We wish to thank 101 contributors for your loggings. Hope you are all working on the "Peanut Power Contest". Will be interesting to see the final results.

This month we salute Montreal Quebec, Canada the host city for the ANARC convention. We hope all of you that are in attendance are enjoying yourselves. Wish I could be there with you, however will be in spirit. Ollie

THE OFFICIAL DX MAGAZINE PUBLISHED MONTHLY BY SPEEDX

CONTENTS

KEYNOTES.....	OLIVER ELLSWORTH	2
DX MONTAGE.....	ALAN BROOKS	5
HAPPENINGS.....	TED POLING	7
SWBC WESTERN HEMISPHERE.....	JIM WHITEHEAD	8
EUROPE AFRICA.....	BOB BUTTERFIELD	15
ASIA OCEANIA.....	MEL HICKMAN	22
STATION SCHEDULES.....	BOB BODELL	28
UTILITY SECTION.....	STEVE HANDLER	30
QSL SECTION.....	BILL CLEVELAND	36
TIPS & TOPICS.....	ART GETZEL	43
CONTRIBUTORS PAGE.....	OLIVER ELLSWORTH	47

BOARD OF DIRECTORS: JIM WHITEHEAD, OLIVER ELLSWORTH  
 DON JOHNSON, STEVE D'ADOLF, JOHN TRAUTSCHOLD  
 BUSINESS MANAGER/PUBLISHER ..... DON JOHNSON  
 MANAGING EDITOR ..... OLIVER ELLSWORTH  
 PROJECTS COORDINATOR ..... DOUG SNYDER  
 SPEEDXGRAM EDITOR/PUBLISHER ..... JOHN TRAUTSCHOLD  
 MEMBERSHIP CHAIRMAN ..... ART GLOVER

SUBSCRIPTION RATES PER YEAR (12 ISSUES)

FIRST CLASS IN USA.....	\$12.00
FIRST CLASS IN CANADA/MEXICO.....	12.00
AO TO SOUTH AMERICA/EUROPE.....	20.50
AO TO ASIA/AFRICA/OCEANIA.....	23.00
SURFACE MAIL WORLD WIDE.....	14.00
SAMPLE COPY WORLD WIDE.....	6 IRC's or 1.00

(MAKE ALL FUNDS PAYABLE IN US DOLLARS)

Permission is granted to broadcast, publish, or reproduce any material contained herein(excepting items which state that they appear by permission from other sources) providing credit is given to: SPEEDX, PO BOX E, ELSINORE, CALIFORNIA, 92330 USA and to the author or contributor when stated.

**S P E E D X**  
 P O B O X E  
 ELSINORE CALIFORNIA  
 U S A  
 9 2 3 3 0

U.S. POSTAGE PAID  
 FIRST CLASS MAIL  
 PERMIT NUMBER 36  
 ELSINORE CA 92330

**FIRST CLASS MAIL**

ADDRESS CORRECTION REQUESTED