

SPEEDX

the dx radio magazine for active shortwave listeners



**CLUB ONDES COURTES DE
RADIO-CANADA
SHORT WAVE CLUB**

**ES DE
ADA
CLUB**



**CLUB ONDES COURTES
RADIO-CANADA
SHORT WAVE C**

**COURTES DE
CANADA
AVE CLUB**



**CLUB ONDES
RADIO-C
SHORT WA**

**ONDES COURTES DE
DIO-CANADA
RT WAVE CLUB**



**CLUB
RAD
SHO**

**CLUB ONDES COURTES DE
RADIO-CANADA
SHORT WAVE CLUB**



NOVEMBER 1975

Vol. V No. XI

JOHNSON, SNYDER, AND BROOKS ELECTED

In the 1975 election to fill three open positions on the SPEEDX 5 member Board of Directors, 65% of the 138 eligible voters responded, and the three newly elected Directors are Don Johnson, Doug Snyder and Alan Brooks. These three, together with the two carry-over Directors (Jim Whitehead and Steve d'Adolf), will comprise the SPEEDX Board of Directors for the next two year period.

Here are the complete results of the balloting:

Don Johnson (63 votes; elected to 4-year term)
Doug Snyder (38 votes; " " " ")
Alan Brooks (35 votes: " " 2-year term)

Robert Butterfield	20	Serge Neumann	18
Kenneth Earhart	8	Lloyd Scott Jr.	8
Arthur Getzel	7	T.E. "Tom" Smith	3
Steven Handler	18	John Trautschold	33
Mel Hickman	15	William Trubee	5

As their first matter of business, the new Board will be voting this month for their selection of a chairman of the Board (President) for the next two years. That decision will be reported as soon as it becomes available.

Our congratulations to the newly elected Directors, and to the voters for their participation. We also extend most sincere thanks to the outgoing Directors, John Trautschold and Oliver Ellsworth, for their excellent help and guidance during their term of office.

CONGRATULATIONS TO 3 NEW FULL MEMBERS

KENNETH KARKI
GRANGEVILLE, ID

DAVID ROMANI
ANN ARBOR, MI

ROBERT VOKES
AUSTIN, TX

Certificates of Full Membership and a copy of the SPEEDX Constitution were mailed to each of the above in October.

SPEEDX WELCOMES THE FOLLOWING NEW ASSOCIATE MEMBERS

WILLIAM PEARSON
AVONMORE, PA

ROBERT BEAUDOIN
BRIDGEPORT, CT

ROBERT FOXWORTH
NEW YORK, NY

ROBERT FORGIONE
WOLCOTT, CT

IINDA DeVRIES
OXFORD, MA

BARRY WASYLIK
WINNIPEG, CAN

GREG KRESSIY
DEMAREST, NJ

JOHN HERMAN
VINTIA, OK

JOHN ENGLAND
PEORIA, IL

PAUL B. SMITH
BALTIMORE, MD

DICK NEISON
SIMI VALLEY, CA

FRANK WOLTMAN
CAMBRIDGE, WI

JOOST DENISSEN
TILBURG, HOLLAND

BRIAN BAUMGARTNER
OTTAWA, CAN

CARLETON MILLER
SILVER LAKE, WA

HITOSHI ASANO
TOKYO, JAPAN

CARL MOORE
BRATTLEBORO, VT

ARTIE BIGIEY
SAN ANTONIO, TX

THOMAS FISCHER
SWITZERLAND

RANDALL SEAVER
CHUIA VISTA, CA

We are looking forward to hearing from all of you often. SPEEDX urges you to support the various columns and sections by sharing your loggings and thoughts with the full membership. Our editors are looking forward to helping you. They need your loggings. SPEEDX needs you.

SOUTHERN CALIFORNIA AREA DXERS

The SCADS meet held in Tustin CA on Oct. 18/19, was a huge success.--54--DXers on hand for a great time. The highlight was a HAP auction that netted \$283.40 which will be donated to the Handicapped Aid Program. The auction became quite active in the bidding at times.

A SCADS get together will be held at the home of Randy Seaver, 1154 Via Trieste Ghula Vista, CA Saturday November 29. Time: 12 noon to evening, a \$2.00 registration fee will cover refreshments and a spaghetti dinner at 5PM

---*---

BOSTON AREA DXERS

A reminder that the BAD GUYS will be meeting on Sunday November 16 at the home of Mark Scannell, 20 Ridgewood Dr. Norwood, MA. A charge of \$1.50 to cover expences will be made.

---*---

MERRY CHRISTMAS SPEEDX STYLE

Thanks to all that responded to the announcement of the HAP Christmas Tree Fund drive in the October issue. All thoes donating \$1.00 or more to the fund, will be wishing all DXers Happy Holidays by their names appearing on the decorative Holiday Greeting page in the December issue of SPEEDX. All donations to reach SPEEDX Headquarters by November 15. Lets fill that page with the names of SPEEDX members.

---*---

BRITISH BROADCASTING CORPORATION MONITORING SERVICE

SPEEDX has acquired a subscription to the BBC-MS, therefore henceforth, information of interest to the shortwave DXer and listener will appear in SPEEDX from this source.

---*---

WORLD RADIO TV HANDBOOK 1976

SPEEDX regrets to announce that we will not be offering WRTH '76 to our members at a discount, as announced last month. The publisher, Watson-Guption has reneged on their agreement with us, due to pressure by retail out-lets. Sorry, we tried to bring to you WRTH at a reasonable price.

---*---

PEANUT POWER PREAKNESS

My old friend "James the Hellene" calls the other night; Sharply takes me to task for not letting him know my horse "DXers Delight" is running this season at Jefferson Downs.--Very patiently do I explain to Jimmy that he has things fouled up as usual; I don't own a mule name of "DXers Delight" much less a horse and if he simmers down a mite I will give him the straight dope, which I do namely, everything about Peanut Power Preakness.--As I mention prizes I hear his ears make sounds like QRN all the way from Vegas.Says he'll get in touch tomorrow and hangs up real fast.--So I hear from him tomorrow collect. He has spent several hours and much scratch talking with this one and that one in such places as Kansas City, New York and Boston and will I be interested in investing a small sum to defray research expenses? I say perhaps.--After considerable haggling a deal is struck: Three IRCs and two fifths of Pearl River Elixir for his early line which I am pleased to pass along to one and all;--50:1 Some poor soul will receive letter 24 January from FIBS saying "Sorry, secretary lost reception report. Please resubmit so we may properly verify".--25:1 A prominent DXer will receive shrunken head veri from station in Ecuador; full data tattoo on left ear. This will send him to his own shrinker.--Jimmy's odds goes on and on, but the above will suffice due to space limitations. We have about one more month to grab those low low power jewels and send them a report. Don't let time slip up on you!

Jack



DX MONTAGE

RESEARCH/COMPILATION/REDACTION by A. W. BROOKS

74 Massachusetts Road

Oakdale, Connecticut 06370

CONFERENCE AT APARTMENT 201 (or "The Guy That Came In From The Cold"): It was New England...it was January...it was Sunday...and it was cold. Attired suitably in trenchcoat and carrying my imposing black attaché case, I alit from the seat of the foreign conveyance, bade my spouse and progeny an apprehensive farewell. It was with great trepidation that I approached the ascending staircase, ultimately arriving in front of the door to apartment 20L. Inside there was the audible, though garbled, sound of voices. Would coming here like this substantially change my *modus operandi*? After several rapid, furtive glances up and down the hallway to ascertain that I had not been followed, I knocked tentatively on the door. The voices seemed to hush....the door opened slowly.... AND THERE THEY WERE!...for the first time I was face to face with THEM....The B.A.D. Guys...for this was, indeed, the gathering place designate for all the Boston Area DXers, radio buffs of varying species and stages of development and accomplishment. In a very short time familiar names became familiar faces, Host Steve d'Adolf, Jerry Berg, Chris Lobdell, and many others. I was afforded also the opportunity to meet Jim Whitehead, later to distinguish himself as President of a then newly-formed organization known as SPEEDX. I was soon told that I would live to regret that liaison...and it was Mrs. Whitehead who mentioned it. Before the afternoon's social contacts concluded I discovered that I had learned more about the various phases of DXing in those few hours than I had from two years of membership in a DX club or of listening to DX programs. This fact is no secret to those in attendance at various regional gatherings since then whether in Boston or Los Angeles and all points between. If nothing else it affords an opportunity to find out that DXers are real people...Well, most of them anyway...except for Charlie Loudenboomer and Mike Macken, of course...



THAT SHOULD START "TONGUES" WAGGING: One of the main sessions at the joint meeting of the Fédération Internationale des Professeurs de Langues Vivantes and the American Council on the Teaching of Foreign Languages will be devoted to the use of radio to teach languages. The session will be held 29 November in Washington and chaired by Professor Richard Wood. Most of the world's major radio stations have provided materials for distribution at the meeting, and representatives have been invited to address the session. Manufacturers of SW receiving equipment have been invited to display their products. Those with an interest in radio and language instruction are invited to attend.



ACORNS FROM OAKDALE:

Heterodyning occurs when you take a person of the opposite sex to lunch.

MALTESE CROSS-UP: Deutsche Welle has handed over its transmitters on Malta to a private organization called "Radio Mediterran", of which DW is still the major shareholder. So Radio Mediterran is much like Radio Trans-Europe since these changes in organization make it possible to add programs by private organizations to the Köln relay broadcasts. Included is a Saturday program, "MALTA CALLING", produced by TeleMalta Corporation, the ex-Rediffusion Malta entity...



YOU'RE NOT LIKELY TO HEAR IT ON RADIO MOSCOW, BUT... The Soviet Union has produced a machine that cost \$480,000 to build and doesn't work. The LIVT-200 is a machine built years ago by the Leningrad Institute of Water Transport and its purpose was to unload cement from ships. But by the time it was completed the Ministry of River Fleet decided it did not need it. However, it did need a machine that would unload calcium phosphate without stirring up clouds of chemical dust. The Leningrad Institute set about converting the LIVT-200 to handle calcium phosphate. A panel was assembled to watch the machine operate. There was a whirring of machinery and, then, nothing. The machine stopped. The phosphate, dampened to keep down dust, had hardened inside the machine and had brought it to a halt. The manufacturers tried again, this time with dry phosphate. The machine started up and suddenly the assembled experts were choking and gasping for air as it belched forth great clouds of dust. The experts decided to sell the LIVT-200 for scrap, but the Institute protested, saying with a little work, it could bring the machine to perfection. However, the Institute said, it would cost another \$240,000 to do so. The UPI story did not quote the experts' reply, but even Moscow doesn't wish to run "in the red".....



DX MONTAGE



The SOAP BOX

A DIVISION OF "DX MONTAGE"

Moderator: *Stan W. Brink*



Some time ago, SERGE NEUMANN, respected DXer and television news director, forwarded a few comments concerning the upward spiral in the battle of the shortwave transmitter. The synopsis is as follows:

"...a study report recommendation that the Voice of America be authorized to construct 2,500 KW transmitters to put the VOA ahead of other foreign broadcasters is frightening. The VOA already uses forty-one domestically-based transmitters with power totalling 8,625 KW combined and another seventy overseas transmitters with power totalling 13,685 KW...these figures exclude those transmitters with power less than 35 KW. Shortwave listeners should demand that the VOA and United States Information Agency officials who would spend hundreds of thousands of taxpayers' dollars to construct such units...and antenna systems to accomodate them...themselves listen to shortwave and see what's being heard around the world. I'm reasonably sure they'd be amazed at the overall quality of the signals put out by the 113 VOA transmitters and 22,310 KW of combined power...furthermore, this latest development considerably erodes some conclusions brought forth in my article, "THE POWER GAME", published in the June 1974 issue of the SPEEDX bulletin (pp. 44-46)..."



Among other arrivals not so long ago came the next commentary which at the very least has got to be thought-provoking. Its author, a respected West Coast DXer and a very active and loyal SPEEDXer, prefaces his remarks by noting that the dissertation is being written with mixed feelings. What is your reaction?...



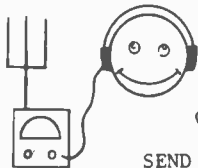
"...I can imagine some of the thoughts that will pop into some peoples' heads as they read it. However, it is not being presented as a proposal nor is it necessarily the opinion of any other member of SPEEDX, NASWA, or ASWLC. It is strictly personal thoughts I'd like to share..."

"I, like many other SWLs and DXers, belong to the three clubs mentioned above. I joined SPEEDX first and...after becoming more involved in DX-ing...joined ASWLC and NASWA. During this period of time I have scoured the three monthly publications from cover to cover...and the fact that keeps staring me in the face is the tremendous amount of repetition in these bulletins that occurs every month...mainly in the loggings sections, which is the 'meat' of every issue. It seems that a good number of reporters who continually report do so to two or all three clubs.... Would it not be nice to have a single publication...to contain around 90 or 100 pages...that still covers every facet of DXing? I am not proposing a merger of three clubs into one, rather I am presenting my thoughts in consolidating DX information into one source. The three clubs could still maintain their chosen titles and feature sections. I...for one... like to maintain files on DX information concerning time, frequencies, and countries. ASWLC has a time index, SPEEDX and ASWLC have listing by countries, and NASWA has a frequency log. But...wouldn't it be great to have all three sections in the publication and each listing all logging information sent in by members of all three clubs? No repetition and no sending reports to 9 or 10 editors every month. I don't know what the cost of postage would be for mailing the issues, but I'm sure it would be less than the combined three publications. Cost of printing and paper would be cut down also, and as every club is facing rapidly rising costs yet still trying to maintain a \$10-12 membership fee, it seems inevitable that something has to give..."

"...So, there it is. There are many facets I did not touch on, but you have my general feelings. I am certainly proud to be a member of SPEEDX and I am in no way dissatisfied with the organization, but I like to obtain as much DX information as possible with minimum effort and cost..."

Okay, SPEEDXers...surely some of you have thoughts on these two subjects...so come up here on THE SOAP BOX and speak your mind...

TECHNICAL TOPICS



Q-MULTIPLIER? AVC? ANTENNA?
GAIN? IMAGE? TUNER?

CROSS-MOD?

AGC?
LSB?
S-METER?



SEND YOUR TECHNICAL QUESTIONS TO:

JOHN KOLB
12532 ARABIAN WAY
POWAY, CAL. 92064

Jeff Fossen would like to know how practical it would be to connect a frequency counter to his DX-160. I would not advise this. The cost to a freq counter could better be spent on a better receiver. In general, there are three problems associated with this combination. First, a freq counter will read the frequency of the receiver local oscillator, not the freq of the received signal. Thus you would have to add or subtract a conversion factor to get the right freq. With a DX-160, you would always subtract 455 kHz from the counter reading. Heathkit made a digital display unit which would take the several frequencies from an SB series receiver/transceiver and combine these for a correct reading, but this was dropped from the latest catalog. It would require much thought and modification to use this with a different receiver. The other two problems concern the connection of the two units. The freq counter must be connected so that it doesn't pull the freq of the rx oscillator, or load down it's output level. This might require adding a buffer amplifier inside the rx. There is also a possibility of digital logic signals inside the freq counter coupling back into the rx through the cable between the two, and causing QRM.

Bill Trubee and someone at the SCADs meeting (Ted Wilson, I believe) reported problems with their receivers causing interference to their TV sets. "When certain combinations of radio bands and TV channels are used at the same time I get dark wavy lines running vertically on the screen." (Bill T.) Bill uses a SPR-4, Ted a R-4B. Ted has tried several R-4B's and they all do the same. He returned the set to Drake, who found the set "within spec." It was suggested that Ted use a low pass filter on the rx antenna input to prevent the oscillator radiation from leaving the set via the antenna, but Ted has this problem even with no antenna connected, ruling out antenna radiation. Both the SPR-4 and R-4's have RF bypass capacitors on the power line, so I wouldn't expect a power line filter to help much, but it's worth a try. The only things I can suggest are to try connecting a good ground, and to insure there is a good connection between the rx chassis and the metal covers. This can be assured by having shiny metal (steel wool or sandpaper the contact points) along the joining edges and lock washers under the screws.

Bill would also like to know what the RF gain control on his SPR-4 is to be used for. Well Bill, not much. It seems to be there only because people expect one. It can be used to make the receiver less sensitive to signals below a certain level (by lowering the gain so that they disappear into the receiver noise level) but I don't see much value to that except to set the rx for DXing Bonaire. On some receivers the RF gain control can be turned down to prevent strong signals from causing overload; in other sets, the design is so poor, the RF gain doesn't help. I've never found any overload in my SPR-4 to find out if the RF gain control would help. In older receivers without product detectors, the RF Gain should be used to control output volume, and the AF gain control (volume) turned up full when receiving SSB signals.

I have received several questions on beam antennas lately, so here is a general discussion. A beam is an antenna which is designed to be very sensitive to signals in one direction, and insensitive to signals from other directions. This can help in two ways. With two or more stations on a given frequency, it can allow you to make one station stronger than the others if the stations lie in different directions from the receiving site, and it allows a greater signal strength of the desired station compared to static and similar noise sources which are approaching the antenna from all directions. Sound too good to be true? For most of us, it is. Except for log-periodic antennas, beams only cover a single band. While beams for several ham bands have been designed combined on a single boom, this has not been done for an SWL beam, and this is a job for an antenna engineer. Cubical quads for two or more bands could be put on a common boom without much interaction, but not other types of beam. Secondly, unless you are interested in stations from a single direction only, the beam will have to be mounted on some kind of mast and rotor. Quads consist of two square loops of wire, $\frac{1}{4}$ wavelength on a side, mounted about .2 wavelengths apart.

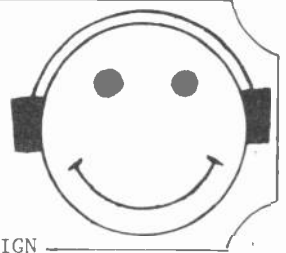
WANTED Alan Laves, 2902 Willowbridge Circle, Austin, TX 78703, would like to buy a BC-221 or LM-18 Frequency Meter. Must be in A-1 shape and have original calibration book and power supply. If you have such a thing for sale, drop Alan a line.



HAP PENINGS

HANDICAPPED AID PROGRAM

TED POLING -HAP DIRECTOR
P. O. BOX 163
MT STERLING, IL 62353



SUPPORT WORLD DX HANDICAPPED AID CAMPAIGN

The long awaited GENERAL INQUIRY and NEW HAPPIE letters and their accompanying lists have been printed. Copies of the General Inquiry letter, along with service & project lists, have been sent to each club on HAP's list. The announcement of our year-end fund drive was sent out with this mailing. The General Inquiry letter and or lists of projects & services can now be sent to anyone who asks.

Order forms for the Radio Canada IS/ID tapes and the Language ID tape are now available on request from HAP HQS. The package containing HAP records and our SMILE stamps is still missing in the mail. Orders for this rubber stamp are being returned. Please re-order when we announce they are again available. A new HAP Jacket Patch is being worked on. We have a few of the original Patches left (designed like the one on the left in my masthead) that were found in a box we overlooked. These are 3" in diameter in red/blue/white. They may be purchased from HAP HQS for \$1.00 each. First come, first served.

HAPIE NEWS.....HAP-86 has just been inducted into HAP. He is blind and being supplied with SPEEDX and ASWIC bulletins on tape.....HAP-76, Joe "Sparky" Ulmer of Denver Colorado, has been named as a HAP Equipment Manager for that area. Sparky held a DX get together at his home in late September.....HAP-82, a class for the educable mentally handicapped in Denver, has just received a grant for the purchase of equipment. This grant was supplied by the local Board of Education after HAP HQ helped compile information for presentation to possible grantors. Our congratulations to the class teacher, Mr. Tom Hillilo.....HAP is cooperating with the local chapter of the National Paraplegia Foundation in Denver, establishing a Citizens Band network for use by handicapped persons needing assistance in emergency situations. Even though HAP does not cater to this facet of the hobby, we are HAPpy to assist in this case.

The question has arisen as to why HAP has not inducted more people not already in the hobby. The superficial answer would be, "If they don't apply, we can't induct 'em!" Our HAP reports over SWBC stations and articles in the hobby press are effective means of reaching those handicapped persons already in the hobby, but how about those who are not already Shortwave Listeners? Hap does not have the staff and resources to search out these people, or the kind of organizations which serve them, and this is where YOU as an individual can help.

Here in Illinois we have an umbrella group which serves a number of organizations. We were able to secure a copy of its list of member organizations and sent a letter to selected groups offering to send copies of an article we prepared for their use in their membership bulletins. If YOU could help us find the names and addresses of similar agencies in your area, HAP would be HAPpy to supply copies of its letter and article to you for forwarding to the agency, or to write to them ourselves. If no umbrella groups exists in your area, we can supply the names of specific health care groups we would like to contact.

YOU might also help by being on the lookout for institutions and homes for the physically handicapped. The person to contact in such cases would most likely be the Director, Director of Voluntary Services, or in some cases, the Librarian.

So you see, YOU can help HAP to reach the people we would most like to contact. A few minutes research by you in the local phone book and a couple of phone calls, could well be the key to making a lot of peoples life a little bit richer. Please, take the time to do so and let HAP HQS know the results.

\$\$\$\$\$...HAP extends its thanks for two money raising projects. First is the 1975 ANARC Convention where a HAP auction was held and the RCI IS/ID tapes were sold. Almost \$130 was raised for HAP there and we thank CHAP & Ian McFarland for their help!

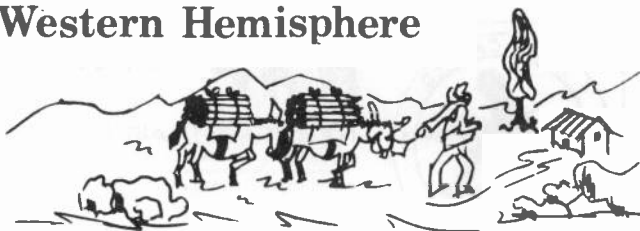
Second was the SCADS meet in California where a HAP auction was also held bringing in \$283.40! Thanks go to Don Johnson, Stewart Mackenzie, Grant Manning, & Dave Thorne for their help. Natcherly we offer many thanks to the fine people at both meets who purchased items for the benefit of HAP. It's YOUR support that keeps HAP going.

Be sure to write if you have any comments, suggestions or help to offer HAP. Ted

SWBC DX - Western Hemisphere

- EDITOR -

E.J. "Jim" Whitehead
177 Pine Ridge Road
Reading, Mass. 01867



LATIN POTPOURRI

According to information supplied by Victor Jaar and relayed by Glenn Hauser most shortwave stations in Haiti are inactive. Mentioned specifically were Radiodiffusion Haitienne, 4940, Radio Capois-la-Mort, 5040, La Voix de la Revolution Duvalieriste, 5980 & 9485v, Radio Caraibes, 6015v, Radiodiffusion Capoise, 6175, Radio Haiti-Inter, 6195, and Radio Union, 6050, which no longer exists. Victor advises that Radio Haiti-Inter dropped shortwave after boosting power on medium wave and is not likely to return. La Voix de la Revolution Duvalieriste did, however, plan to return to shortwave as of a year ago.

One Haitian station that remains active is Radio Citadelle. This station has been logged in the early morning on its frequency of 6155 khz in Puerto Rico and Mississippi. Of course, Radio 4VEH is also active and is still the best bet for DXers trying to add Haiti to their country totals. Look for Radio 4VEH on 11835 khz around 1230 GMT or on 3345, 6120, and 9770 where they are also active.

Speaking of logging new countries now is a good time to try to log La Voz de los Galapagos, 4810 khz. This rarely heard station has been noted with good signals as early as 0130 GMT here in New England over the normally dominant Radio Popular. DXers on the WCNA will find your best shot around 0400 GMT or in the early morning hours.

That brief appearance of CHNX, Halifax, on 6080 khz has now been explained. CHNX Chief Engineer, Dick Parker, in a letter to Al Brooks says simply, "We goofed and had trouble!! We are back on the tracks now and mean to stay there." And, indeed, CHNX is once again squarely planted on its assigned frequency of 6130 khz. CHNX, incidentally, will celebrate its golden anniversary during 1976 and Dick Parker notes it will be a "big year for us." So, let's make a note to accept engineer Parker's invitation to "tune in and help us celebrate."

The International Service of Radio Nacional de Venezuela is being noted once again on 19 meters. There are many reports this month of programs in various languages being aired on 15400 khz. This service is apparently beamed to Europe and the Middle East since Arabic, French, and English programs are noted. According to an announcement monitored by Glenn Hauser the broadcasts on 15400 khz are parallel 6170 and 11750 kilohertz but these outlets are not mentioned in any reports and may be presumed inaudible. Look for Radio Nacional anywhere from 1400 to past 2300 GMT.

Those of you checking 5980 khz in hopes of logging the Peruvian, Radio Panamericana, are advised to beware of Radio México which is also active on 5980 khz in the evenings. Radio México is not adverse to playing Andean style music so be sure you get an ID and don't jump to conclusions.

One last note before the loggings and that is the usual reminder that all times are in GMT, that dates are stated in the month/day format, and that reception conditions are reported in the S10 code. Thanks to 43 great guys who sent in loggings. Y'all have a happy Turkey Day. Y'hear.

ARGENTINA

- 6120 0900 LRX1 R. El Mundo:w/nx, TC, mx, ID (322 9/10 Tannenwald-NY)
(111 0915 9/28 Vilar6-PR)
- 6160 1000 LRA? R. Nacional:w/nx, ID, apparently off frequency (333, 9/10
Vilar6-PR) Could this be LV19 R. Municipal, Malargüe with
a relay of R. Nacional? LV19 listed here! ejw
- 9690 0615 LRA32 R.A.E.:w/ARGENTINA IS A WORLD POWER featurette, other EE
tlks, provincial mx (554 9/9 Marti-CA)(Redman-IL)(MacCoy-AZ)
(Lovett-OH)(DeVries-MA)
- 11710 0630 LRA35 R.A.E.:w/ARGENTINA 75 pgm, folk mx, IDs, off @ 0700 (444
9/24 Hoffman-PA)(Earhart-PA)(Zelasko-IN)(Yajko-PA) Ken
Earhart also reports SS nx @ 2302 on 9/27 despite listed
EE svc. 2302 - 2358. Has been reported normal since so
maybe a holiday or operator error.

BOLIVIA

- 4875 1033 CP75 La Cruz del Sur:w/children singing hymns, OM SS tlk (343
9/14 Miller-OH)
- 6035 1000 CP92 R. Panamericana:w/YL SS tlk into OM in Quechua, Bolivian
mx. Covered first by Uruguayan then splatter from LV del
Tolima (444 9/8 Vilar6-PR)

BRAZIL

- 3205 0115 ZYE318 R. Ribeirão Preto:w/OM spinning Brazilian pops, ad,
recorded ID w/freqs @ 0120. Is ex-3265 (222 9/29 Whitehead-MA)
- 3326 0146 ZYL26 R. Gazeta:w/OM reads ad, into pop vocal, ads, mention
Gazeta in passing (222 9/29 Whitehead-MA)
- 4755 0859 ZYF23 R. Dif. do Maranhão:w/ ID, Brazilian mx (333 10/7 Jones-MS)
- 4765 0938 ZY028 R. Espírito Santo:w/Brazilian mx pgm (232 10/2 Bodell-OR)
- 4785 0330 ZYN8 R. Ribamar:w/clear ID w/freq. usual Brazilian music pgm
(433 10/4 Vecchiola-PA)
- 4855 0240 PRC5 R. Clube do Pará:w/typical sambas, ads, ID (343 9/17
Miller-OH)(444 0305 10/4 Vecchiola-PA)(222 0830 10/5 Vilar6)
- 4915 0832 ZYE2 R. Dif. Macapá:w/PP tlk, music (433 10/2 Bodell-OR)
- 4985 0800 ZYX2 R. Brasil Central:w/ ID mentions "La mais potente" slogan
(322 10/5 Vilar6-PR)(444 0844 10/2 Bodell-OR)(333 2320 9/24
Miller-OH)(444 ??? ??? Shaw-CA)(353 0615 9/20 Earhart-PA)
- 5025 0836 ZYO23 R. Vitória:w/PP tlk, Brazilian mx, ads (242 10/2 Bodell-
OR)(342 0440 9/25 Earhart-PA)
- 5965 0925 ZYU60 R. Guaíba:w/lt. instrumentals, ID (444 9/21 Laves-TX)
- 5975 0928 ZYH01 R. Guarujá:w/OM speech, ID @ 0929 (131 10/8 Vokes-TX)
- 6000 0027 PRK5 R. Inconfidência:w/soccer match (323 9/18 Yajko-PA)
- 6045 0942 ZYS33 R. Clube Paranaense:w/OM & YL ID, pops (333 9/21 Laves-TX)
- 6135 0852 PRC21 R. Gaúcha:w/Brazilian mx, IDs (333 9/19 Yajko-PA)
- 6155 0855 ZYN30 R. Cultura da Bahia:w/accordion mx, morning prayer (222
9/28 Vilar6-PR)
- 6175 0905 ZYV74 R. Guaraní:w/ads, local mx, anmt. "R. Guaraní, Belo
Horizonte, Minas Gerais" (212 9/28 Vilar6-PR)
- 9545 2235 ZYZ43 R. Universo:w/OM tlk, ID @ 2245 (322 9/14 Vokes-TX)(211
2250 9/16 w/ "A VOZ DO BRAZIL" pgm, ID @ 2259 Laves-TX)
- 9585 0930 ZYR56 R. Nacional de São Paulo:w/"Philadelphia Freedom", other
pops, ID (222 10/4 Vokes-TX)
- 9665 0830 PRL8 R. Nacional de Brasília:w/TENTATIVE logging of OM tlk,
pop Brazilian mx, possible ad (353 10/4 Earhart-PA)
- 9675 0920 ZYT29 R. Diário da Manhã:w/ OM PP tlks, ID as "R. Diário"
(343 10/7 Vokes-TX)
- 9695 0015 ZYB61 R. Rio Mar:w/lt. Brazilian mx, ads (233 10/9 Lovett-OH)
- 9705 1025 ZYZ24 R. Mauá:w/OM tlk, PP songs, ID (222 10/4 Vokes-TX)
- 9755 0028 ZYF24 R. Dif. do Maranhão:w/PP spts commentary, heard as early
as 2230 some days (353 9/19 Brooks-CT) ZYW23 listed. New??
- 11785 2327 ZYU61 R. Guaíba:w/easy listening PP mx, OM ancr (333 9/9
Bixby-CA)(444 0152 9/15 Brooks-CT) 2327 unusual for WCNA??
- 11795 0204 ZYZ39 R. Nacional de Rio:w/many IDs, OM tlk (142 10/10 Laves-TX)
- 11805 0005 ZYZ65 R. Globo:w/OM nx w/electronic tones (343 9/23 Bixby-CA)
(322 0152 9/23 w/mx, ID, nx bulletin, ads Miklejewski-MN)
- 11825 2310 ZYB87 R. Jornal do Comércio:w/pops, OM ancr (433 9/16 Bixby-CA)
- 11865 0353 ZYB85 R. Clube de Pernambuco:w/Brazilian contemporary music,ad
Signal fading fast (252 9/11 Bixby-CA)
- 11925 0145 ZYR78 R. Bandeirantes:w/light mx, IDs, tlk (433 9/15 Brooks-CT)
(333 2336 w/nxcst 9/16 Bixby-CA)
- 15145 2330 ZYB37 R. Jornal do Comércio:w/pop mx, some bossa nova type
(343 10/5 Zilmer-WI)(222 1935 9/21 Lovett-OH)

BRAZIL (cont.)

- 15190 0025 PRK9 R. Inconfidencia:w/ soccer match cmntry (333 9/18 Yajko-PA)
 15245 2100 PRL8 R. Nacional de Brasflia:w/EE MUSIC OF THE MASTERS pgm
 (423 9/28 Redman-IL)
 15445 0200 PRL8 R. Nacional de Brasflia:w/pop mx pgm, PP IDs (333 10/8
 Redman-IL)(444 0040 9/23 Yajko-PA)
 17815 2359 ZYE419 R. Cultura, São Paulo:w/s/off @ 0000 w/ID, audible
 after VOA vacates 17820 (152 9/11 Laves-TX)

CANADA

- 5960 0210 CBC Northern Svc.:w/EE nxcst (444 10/1 Zelasko-IN)
 5970 0800 R. Canada Intl.:w/IS, ID, nx, spts, magazine to Southeast Asia
 (342 9/4 Smith-FL)(444 1145 9/26 Zelasko-IN)(434 1213 9/20
 Yajko-PA)
 6070 0930 CFRX, Toronto:w/"CFRB News" (433 9/20 Jones-MS)
 6080 1716 CKFX, Vancouver:w/country mx, ads (222 10/4 Pimblett-ALBERTA)
 6085 0132 R. Canada Intl.:w/nx, IDs, magazine pgm (554 10/1 VanFossen-OH)
 6135 0405 R. Canada Intl.:w/CANADA WEEKEND MAGAZINE
 6160 0936 CKZN, St. Johns:w/marine wx, spts nx (352 9/22 Jones-MS)(433
 2220, 10/9 Brooks-CT)(332 1100 9/31 Zilmer-WI)
 6160 0615 CKZU, Vancouver:w/C & W mx (333 ??/?? Shaw-CA)
 6175 0435 R. Canada Intl.:w/mx, cmntry on Caribbean relations (433 10/7
 Benjamin-CA)
 9535 0035 R. Canada Intl.:w/SS DX pgm announcing disbanding of RCSWC
)??? 9/7 Hauser-OK) This svc. now on 9655 khz gh
 9625 2000 CBC Northern Svc./R. Canada Intl.:A real mess here as RCI and
 the Northern Svc. share the same frequency though beamed to
 different target areas. Presumably it is felt that QRM will
 not be a problem at the target area. Here RCI in FF and EE
 2000 - 2200 mixes at about equal level with Northern Svc.
 (--2 9/9 Hauser-OK)("What a mess, Don't know how you'd SIO
 rate it!", 2100 10/10 Lovett-OH)(433 0210 w/Northern Svc.
 10/1 Zelasko-IN)(544 1030 w/Northern Svc. 9/30 Hoffman-PA)
 (434 0118 9/16 Bethge-MO)(554 1700 9/26 Van Fossen-OH)
 (555 1030 9/12 Smith-FL)
 9655 0430 R. Canada Intl.:w/science tlk on pipeline (334 10/3 MacCoy-AZ)
 11720 1705 CBC Northern Svc.:w/live coverage of World Series (--3 10/11
 Hauser-OK)
 15325 1845 R. Canada Intl.:w/RCSWC pgm to Africa, ID (333 10/4 Van Fossen
 OH)(544 2222 10/5 S.J. Shaw-CA)(433 2145 9/28 Redman-IL)
 17820 1935 R. Canada Intl.:w/FF version RCSWC (444 9/21 Jacobson-IL)

CHILE

- 9750 1022 CE957 R. Minerfa:w/ discription of tennis match, ID @ 1031
 (232 9/19 Miklejewski-MN)(433 2325 10/7 Pimblett-ALBERTA)
 15150v 2208 CE1515 R. Nacional de Chile:w/GG & II versions of THE VOICE OF
 CHILE pgm. GG 2208 - 2211 followed by Italian 2211 - 2220
 (233 9/23 Schwartz-DE)(333 0110 9/15 Talbot-WI)(433 2255 w/EE
 9/15 Yajko-PA)(333 2153 9/28 S.J. Shaw-CA)(433 2300 9/18
 Van Fossen-OH)

CLANDESTINE

- 12080 2245 R. Euzkadi:w/Basque nx, ID @ 2300, mx (232 9/23 Barber-MANITOBA)
 (232 1958 w/ SS sign off anmt followed by chorus singing
 9/14 Vecchiola-PA) Active no doubt due to situation in Spain.

COLOMBIA

- 2440 0320 HJAV R. Cordobesa:w/ID, RCN plug, is 2x 1220 harmonic (???
 10/11 Hauser-OK)
 3280 0255 HJJU R. Meridiano 70:w/TNETATIVE logging of traditional
 Colombian mx, Do not believe is Ecuadorian LV del Napo
 (252 9/23 Bixby-CA)
 4755 0422 HJKC Emisora Nuevo Mundo:w/LA mx, CARACOL promos (322 10/8
 Cleveland-CA)(423 0555 10/7 Redman-IL)
 4765 0107 HJDY R. Catatumbo:w/Guitar mx, ads, tlk (333 9/28 Thompson-NM)
 4786v 0619 HJLW Ecos del Combeima:w/Colombian mx, repeated IDs, Super net
 plugs (232 9/28 Snyder-CA)(Cleveland-CA)(Redman-IL)(Miller-
 OH)(Earhart-PA)(Tannenwald-NY)
 4865 0510 HJLZ LV del Cinaruco:w/LA nx including many mentions of Bogota
 (343 9/30 Snyder-CA)(333 0433 9/25 Cleveland-CA)(322 0123
 9/23 Jones-MS)

COLOMBIA (cont.)

- 4885 0355 HJIG Ondas del Meta:w/inst. mx, ads, many IDs (343 9/27 Thompson-NM)(432 0417 9/25 Cleveland-CA)
 4915 0245 HJSG R. Guatapurí:w/soccer match cmntry (333 10/8 Vokes-TX) (242 0405 9/18 Laves-TX)(433 0412 9/25 Cleveland-CA)
 4945 0605 HJDH R. Colosal:w/LA mx, anmts of "La Serenata Colosal" (444 9/24 Redman-IL)(Cleveland-CA)(Bixby-CA)(Miklejewski-MN)
 4955 0415 HJCG R. Nacional:w/ Opera pgm (433 10/10 Pimblett-ALBERTA) (Cleveland-CA)(Thompson-NM)(Redman-IL)(Talbot-WI)
 4965 0406 HJAE R. Santa Fé:w/Colombian mx, frequent IDs (433 9/26 Cleveland-CA)(444 0610 9/15 Redman-IL)
 5075 0231 HJGC R. Sutatenza:w/nice LA mx, ID (333 10/10 Trautschold-WI) (443 0326 9/26 Cleveland-CA)
 5900 1030 HJ?? R. Nacional:w/LA mx, tlk, cl. mx, ID with gongs. Possible test or point to point feeder?? (443 10/6 Zilmer-WI)
 5990 1045 HJ?? LV de los Centauros:w/mx, tlk, ID (322 10/1 Zilmer-WI)
 6030 2330 HJZJ R. Nacional:w/ID, cl. mx (333 10/9 Leamy-OH)
 6065 0535 HJAX R. Super:w/tango mx, many IDs (433 9/16 Redman-IL)(333 0605 9/15 Jacobson-IL)
 6075 0205* HJID R. Sutatenza:w/SS tlk, ID @ 0204* (--2 10/3 Jernakoff-NY) (444 0204* 9/15 Leamy-OH)(333 0900 ??/?? Tannenwald-NY)
 6115 1045 HJIE LV del Llano:w/ranchera mx pgm, ad for work clothes (222 9/16 Miklejewski-MN)
 6150 0950 HJ?? LV del Huila:w/LA mx, anmt "Una onda moderna en la juventud" (444 9/17 Vilaró-PR)(Redman-IL)(Bixby-CA) (Miklejewski-MN)(Earhart-PA)
 6170 0950 HJBJ LV de la Selva:w/ads, LA mx, hit hard by YVKO @ 0958 (343 9/17 Jones-MS)(544 0930 9/17 Vilaró-PR)
 15335 2330 HJZP R. Nacional:w/SS ID, nxcst (434 9/18 Yajko-PA)(433 1230 9/20 Zilmer-WI)(443 1600 9/26 Jones-MS)

COSTA RICA

- 4832 1100 TIHB R. Capital:w/SS ID/TC, ranchera mx, pop mx, ads (443 9/9 Smith-FL)(343 0300 9/17 Brooks-CT)
 6006 0830 TIHB R. Reloj:w/LA mx, IDs (322 9/11 Tannenwald-NY)(433 0858 9/24 Yajko-PA)(423 0620 9/24 Redman-IL)
 6175 1120 TIFC Faro del Caribe:w/religious vocal mx, ID as "Emisora... Faro del Caribe" (332 9/24 Brooks-CT)
 9645 1134 TIFC Faro del Caribe:w/"WORD OF LIFE" pgm (343 9/25 Brooks-CT)

CUBA

- 9525 0745 R. Habana Cuba:w/EE VOICE OF VIETNAM pgm (443 9/24 Miller-CA)
 9550 0425 R. Habana Cuba:w/SS political speech, mx (443 10/7 MacCoy-AZ)
 11720 1658 R. Habana Cuba:w/opening AA svc, much QRM (--2 9/7 Hauser-OK)
 11760 2210 R. Habana Cuba:w/SS mx pgm (444 9/28 S.J. Shaw-CA)
 11835 0105 R. Habana Cuba:w/EE nx on Middle East, is NF (353 9/19 Earhart-PA)(--? 0159 w/SS anmt of this NF 9/7 Hauser-OK)
 11855 2030 R. Habana Cuba:w/EE nxcst by OM/YL, cmntry (444 9/15 DeVries-MA)
 11930 0220 R. Habana Cuba:w/political tlk, cmntry (444 9/23 Yajko-PA)
 15230 1615 R. Habana Cuba:w/LA mx pgm broken by excerpts from Castro speeches (444 9/14 Jacobson-IL)(434 2160 9/28 S.J. Shaw-CA)
 17705 1230 R. Habana Cuba:w/SS ID, TC, LA mx, cmntry (454 9/11 Smith-FL)

DOMINICAN REPUBLIC

- 4807 0918 HIAQ R. Norte:w/LA mx pgm (333 9/18 Jones-MS)(423 ??? w/ ID as "La emisora que más se identifica con el pueblo" 10/10 Vilaró-PR)(332 0910 w/OM ID, LA ballads 9/13 Earhart-PA)
 4850 0017 HIRL R. Clarín:w/SS nx, LA ballads (343 9/21 Brooks-CT)(Miller-OH)(Cleveland-CA)(Thompson-NM)(Tannenwald-NY)
 4930 0258 HIBE R. Mil:w/vocal and inst. mx, many IDs (333 9/27 Thompson-NM)(Cleveland-CA)(Redman-IL)(Vecchiola-PA)
 9505 2140 HISD R. Televisión Dominicana:w/non-stop LA ballads, ID @ 2200 (433 10/10 Earhart-PA)(Leamy-OH)(Vecchiola-PA)(Redman-IL) (Jones-MS)(Lovett-OH)

ECUADOR

- 3280 0312 HCVN7 LV del Napo:w/LA music, SS anmts (331 9/26 Cleveland-CA)
 3340 0330 HCVA4 R. El Mar:w/OM tlk, ID, then LA mx (342 10/9 Vokes-TX)

ECUADOR (cont.)

- 3380 1120 HCRY4 R. Iris:w/Andean mx on organ, terrible modulation, ID
(342 ??/?? Shaw-CA)(443 0230 9/29 Whitehead-MA)
- 3390 0310 HCOT1 R. Zaracay:w/Andean mx to 0320 then pop LA mx, ID @ 0335
(322 9/26 Miklejewski-MN)(Cleveland-CA)(Redman-IL)(Bixby-CA)
- 3395 1125 HCER5 Escuelas Radiofónicas Populares:w/OM hosting Andean vocal
mx, ad for vanilla extract & others, ID then chime and nx
(333 ??/?? Shaw-CA)(323 1056 9/15 Miklejewski-MN)
- 4679v 0130 HCWE1 R. Nacional Espejo:w/mx,chapter of soap opera, ads (333
9/27 Tannenwald-NY)(Vilar6-PR)(Redman-IL)(Thompson-NM)
(Cleveland-CA)(Yajko-PA)(Earhart-PA)
- 4772 0408 HCDW2 R. Cenit:w/sports event coverage, s/off @ 0424 w/ ID & NA
(333 10/5 Laves-TX)(434 0405 10/5 Vokes-TX)
- 4790 0545 HCMQ1 R. Atalaya:w/ LA ballads & tlk (332 9/25 Earhart-PA)
- 4800 0917 HCMB5 R. Popular Independiente:w/ID as "R. Popular...Ecuador"
Ecuadorian mx (322 10/10 Jones-MS)(Snyder-CA)(Earhart-PA)
- 4820 *0926 HCRT6 R. Paz y Bien:w/NA, ID @ s/on (232 10/8 Vokes-TX)(112
1000 w/ Ecuadorian mx pgm 9/17 Vilar6-PR)
- 4926 0625 HCAV3 R. Luz y Vida:w/ Ecuadorian mx pgm (343 9/28 Snyder-CA)
(444 1015 w/ U.S. pops 10/8 Jones-MS)(444 0545 9/23 Redman-IL)
- 4911 0501 HCMJ1 Emisora Gran Colombia:w/ excited OM w/ sports event
coverage, IDs, then mx pgm (343 9/30 Snyder-CA)
- 4923 0310 HCRQ1 R. Quito:w/Bolero mx, Pepsi ads, IDs (444 9/26 Redman-IL)
(322 0340 9/26 Cleveland-CA)(344 0106 10/9 Vecchiola-PA)
- 4938 0219 HXCZ1 R. Nacional del Ecuador:w/American MORs "Tea for Two",
"Girl that I Marry" etc. (322 9/18 Miller-OH)(Laves-TX)
(Trautschold-WI)(Jones-MS)(Redman-IL)
- 5060 0338 HCEH3 R. Nacional Progreso:w/ ID, Andean mx (242 9/23 Bixby-CA)
- 5970 0615 HCJB LV de los Andes:w/PASSPORT pgm (444 10/11 Naylor-CA)(
Miller-CA)(Johnstone-CA)(Benjamin-CA)(Thompson-NM)
- 6050 0320 HCJB LV de los Andes:w/SS nx, ID (444 9/14 Jacobson-IL)(352
9/14 w/OM nxcst @ 1137 Earhart-PA)
- 6065 1005 HCJB LV de los Andes:w/SS rel. tlk, is new frequency for trans-
missions to South America (454 9/14 Earhart-PA)
- 6130 1055 HCJB LV de los Andes:w/hymns, VOA QRM (332 9/13 Earhart-PA)
- 9560 0230 HCJB LV de los Andes:w/DX PARTY LINE pgm (544 9/21 DeVries-MA)
(Benjamin-CA)(Naylor-CA)(Zelasko-IN)(MacCoy-AZ)
- 9625 0426 HCJB LV de los Andes:w/end Romanian, into Russian @ 0430 (444
10/8 Lovett-OH)(454 0350 10/10 Earhart-PA)
- 9745 1030 HCJB LV de los Andes:w/EE pgm to S. Pacific, into Russian @
1045 (333 10/1 DeVries-MA)
- 11875 0120 HCJB LV de los Andes:w/Ecuadorian string mx, IDs. Is NF for SS
Svc. (353 9/19 Earhart-PA)(--4 0120 9/7 Hauser-OK)
- 11915 0215 HCJB LV de los Andes:w/ PASSPORT pgm (343 9/17 Smith-FL)(-- ?
0117 9/7 Hauser-OK)
- 15115 0021 HCJB LV de los Andes:w/ SS ID, nx, some mx 0030* (444 10/8
Van Fossen-OH)(--? 2115 tho not audible @ 2145 during
Quechua block 9/7 Hauser-OK)(454 1312 w/MORNING IN THE
MOUNTAINS pgm 9/6 Smith-FL)(454 2330 9/21 Earhart-PA)
- 15160 1404 HCJB LV de los Andes:w/NF for MORNING IN THE MOUNTAINS pgm tho
weaker than // 15115. HCJB suffers and causes a severe het
to XEWW, no doubt ruining its daytime reception in South
America too (--2 9/7 Hauser-OK)(333 1400 9/20 Brooks-CT)(423
1245 w/HAPPINESS IS 9/14 Yajko-PA)(333 1940 w/SS lt. mx pgm
9/21 Lovett-OH)
- 17730 2000 HCJB LV de los Andes:w/EE ID, HOUR OF DECISION pgm (554 9/10
Smith-FL)(333 1930 9/22 Jacobson-IL)

EL SALVADOR

- 2310 0335 YSCF Ondas Orientales:w/TENTATIVE logging of SS tlk, presumed
YSCF as in previous years. Is 2x 1155 (--1 10/11 Hauser-OK)
- 9576 1800 YSV R. Comercial:w/religious mx, sermon, no positive ID so must
remain TENTATIVE (222 9/20 Vokes-TX)

FRENCH GUYANA

- 3385 0927 O.R.T.F Cayenne:w/OM tlk in FF, QRM (323 10/2 Bodell-OR)(332
*0902 w/tone, 0915 guitar IS, LA mx, ID, & freqs into tlk
and mx pgm 10/9 Jones-MS)

GALÁPAGOS ISLANDS

- 4810 0130 HCVG8 LV de los Galápagos:w/OM saying Mass, then YL w/rel. mx
to 0200 ID. (322 10/13 Whitehead-MA)(242 1212 10/8 Laves-
TX)(342 1211 10/8 Vokes-TX)

GUYANA

5950 0000 GBS Action Radio:w/EE nx, rel tlk (422 10/7 Zilmer-WI)

GUATEMALA

2360 1045 TGBA R. Maya de Barillas:w/ Indian language tlk // 3325
(252 9/25 Zilmer-WI)
2390 1155 TGDF LV de Atitlán:w/ID and vocal mx, seemingly in Indian lang.
(333 ??/?/? Shaw-CA)(252 1100 9/25 Zilmer-WI)
2420 1140 TGED R. 1210:w/vocal mx, "TGED" ID is 2x 1210 (--2 10/8 Hauser-OK)
3300 0315 TGNC R. Cultural:w/EE rel tlks (433 9/24 Kummer-KY)(Cleveland-CA)(Thompson-NM)(Miklejewski-MN)
3325 1113 TGBA R. Maya de Barillas:w/Swiss mx pgm complete w/ yodels
(343 9/15 Miklejewski-MN)(Jones-MS)(Thompson-NM)(Shaw-CA)
3360 1145 TGVN LV de Nahualá:w/OM hosting Central American rhythms, UTE
QRM (333 ??/?/? Shaw-CA)(Thompson-CA)(Miklejewski-MN)
3380 0105 TGCH R. Chortis:w/orchestral mx, many IDs (444 9/27 Thompson-NM)(322 0210 9/30 Jones-MS)
4825 0130 TGMN R. Mam:w/EL MUNDO EN MARCHA nxcst (433 10/8 redman-IL)(443 0203 w/horrible sounding mx, ID 10/10 Vecchiola-PA)

HAITI

3345 1035 4VSO R. 4VEH:w/SS rel tlk, rel. mx (333 10/2 Bodell-OR)
6155 1500 4VWA R. Citadelle:w/FF ballads, ads (322 9/18 Vilar6-PR)(322 1051 w/ OM & YL ancrs, mention Cap Haitien 10/10 Jones-MS)
11835 1405* 4VEJ R. 4VEH:w/EE closing anmts, ID (343 9/20 Snyder-CA)(343 1220 w/LIGHT OF LIFE pgm after ID @ 1230 9/28 Miklejewski-MN)

HONDURAS

4781 1158 HRRZ R. Juticalpa:w/SS TC/ID, LA mx (222 10/7 Laves-TX)(333 1158 w/ID, ads for Coke, Banco Central 10/1 Vokes-TX)
4820 0335 HRVC LV Evangelica:w/SOUNDS OF JOY pgm, OM nx (333 9/28 DeVries-MA)(Brooks-CT)(Cleveland-CA)(Jones-MS)(Redman-IL)(Earhart-PA)(Miklejewski-MN)
4920 1245 HRPL3 R. Progreso:w/"La más grande, R. Progreso" anmts,ranchera mx (222 9/25 Miklejewski-MN)(Vilar6-PR)(Cleveland-CA)(Redman)
5875 1114 HRN LV de Honduras:w/guitar mx,rooster crowing occasionally, many ads, ID (444 9/19 Miklejewski-MN)
6075 1207 HRMH5 LV del Junco:w/lt. organ mx, OM w/ IDs (333 9/20 Snyder-CA)(222 1208 9/25 Vokes-TX)
6185 0725 HR?? R. Swanw/mx,frequent IDs (242 9/18 Talbot-WI)(Barber-MANITOBA)(Yajko-PA)(Vilar6-PR)

MARTINIQUE

3315 0115 O.R.T.F. Fort de France:w/FF tlk between 2 OM, stong RTTY QRM (432 10/1 Earhart-PA)
5995 0120 O.R.T.F. Fort de France:w/OM tlk, mx after 0130 (--3 10/5 Jernakoff-NY) Once again, believe this is Vatican FF Svc.!!!

MEXICO

5980 0204 XERMX R. México:w/RADIO CORREG DEL AIRE (323 10/9 Miklejewski-MN)
6105 2205 XEQM Su Pantera:w/pop mx, tlk of Merida, call letter ID (232 9/21 Laves-TX)(322 0325 9/28 Zilmer-WI)(333 1145 9/20 Vokes-TX)(333 1231 9/14 Jones-MS)
6115 2230 XEUDS R. Universidad de Sonora:w/many IDs, classical mx (444 10/6 Thompson-NM)(443 2230 9/18 Cleveland-CA)
9515 2355 XEWW LV de América Latina:w/REVISTA DE LA SEMANA pgm, lt mx (232 10/9 Lovett-OH)
9555 1917 XEQK La Hora Exacta:w/rapid SS ads, TC (??? 9/15 Hauser-OK)
15160 2350 XEWW LV de América Latina:w/ promos, ads (444 9/24 Lovett-OH) (--2 1343 w/ nx @ 1400 hetting HCJB 10/10 Hauser-OK)
15385 2205 XERMX R. México:w/ ID, anmts, Mexican mx (444 9/23 Schwartz-DE) (Thompson-NM)(Redman-IL)(Talbot-WI)(Jacobson-IL)(Zelasko-IN)

NICARAGUA

2200 0323 YNQ Emisora La Lider:w/TENTATIVE logging of SS dialog, pgm promos. Is 2x 1100 harmonic (--1 10/11 Hauser-OK)
2920 0330 YNTJ Ecos de las Brumas:w/LA mx into s/off @ 0402, off @ 0405 after anthem. Is 2x 1460 harmonic (343 10/8 Hauser-OK)

PARAGUAY

6025 *1000 ZPA1 R. Nacional:w/pgm notes, ID, then mx (423 10/2 Bodell-OR)

PERU

- 4790 0320 OAX8F R. Atlantida:w/ LA mx, ads, 0325 ID (332 9/24 Cleveland-CA)(322 1035 w/ Peruvian mx, ads 9/23 Vilar6-PR)
- 4826 0355 OAX8R LV de la Selva:w/TENTATIVE logging of non-stop Andean mx no ID in 30 min. who else? (432 9/29 Cleveland-CA) HCAV3 ??
- 4860 0420 OB24Z R. Chinchaycocha:w/ Romantic LA mx, novelty tune to 0429 ID into 0502* (433 9/25 Cleveland-CA)
- 4890 0407* ????? R. Musical de Junfn:w/pop mx pgm, long sign off anmts w/ ID as listed. Is new station!! (333 10/16 Vokes-TX) Nice catch!! Thanks for the phone tip. ejw
- 4995 0452 OAZ4C R. Andinaw/Andean mx, SS anmts (332 9/24 Cleveland-CA)
- 5010 0437 OAX8V R. Eco:w/ "R. Eco, Eco.." ID, Peruvian mx (252 10/1 Bixby-CA)(322 0435 9/24 Cleveland-CA)
- 5025 1045 OAX7Q R. Quillabamba:w/ Andean style mx, tlk (433 9/25 Zilmer-WI)(??? 1028 10/5 Laves-TX)(343 1025 9/26 Miklejewski-MN)
- 5040 0458 OCY4Y R. Libertad de Junfn:w/Andean mx, IDs as "R. Libertad" (343 9/14 Laves-TX)(333 0445 9/25 Cleveland-CA)(433 1030 9/25 Zilmer-WI)
- 5970 1030 OBX4Q R. El Sol:w/Andean mx, ID. Heard each day to CBC s/on @ 1100 (322 10/1 Zilmer-WI)(444 1045 10/4 Vokes-TX)
- 5980 0520 OBX4M R. Panamericana:w/mx pgm, IDs rare (433 9/14 Laves-TX)
- 6010 1030 OAX4V R. América:w/LA mx, YL tlk, ID @ 1043 (342 9/19 Zilmer-WI)
- 6082 0550 OAX4Z R. Nacional:w/EL PERU EN MARCHA pgm, IDs (422 9/16 Redman-IL)
- 9505 0130 OAX4V R. América:w/ nice LA mx, ID, ads (333 10/9 Miklejewski-MN) You positive this not R. TV Dominicana also active here?

TURKS & CAICOS

- 4788 2255 VSI8 R. VSI8:w/pop mx DJ show, IDs (222 10/9 Laves-TX)(333 2235 w/apparent test xmsn-same song repeated, OM ID QTH etc. 10/6 Vokes-TX)(212 2303 9/29 Jones-MS)

VENEZUELA

- 3225 1050 YVTC R. Occidente:w/ OM hosting LA vocals (343 ??/?? Shaw-CA)
- 3245 2055 YVKT R. Libertador:w/ ads, IDs (111 9/28 Vilar6-PR)(422 0322 w/ 2 OM talking, CW QRM 9/26 Cleveland-CA)
- 3295 0300 YVOG R. Trujillo:w/ OM ID, nice LA music pgm (232 9/23 Bixby-CA)
- 3355 0232 YVLC R. Impacto Valencia:w/Rumbos net nx, local ID @ 0233 (212 10/5 Laves-TX)
- 3365 0220 YVQP R. Puerto La Cruz:w/OM ID, tlk (343 10/5 Laves-TX)(422 0145 w/ mx, ads 10/4 Zilmer-WI)(321 0310 10/10 Cleveland-CA)
- 3385 *1000 YVQI R. Barcelona:w/ NA, martial mx, ID, call, freqs, into LA mx pgm (432 9/20 Jones-MS)
- 3395 2110 YVOJ R. Universidad:w/ ads mx, IDs (222 9/28 Vilar6-PR)(333 0353 10/5 Laves-TX)
- 4770 0135 YVNW R. Bolivar:w/ OM tlk, swinging LA pop mx (232 9/22 Trautshold-WI)(Brooks-CT)(Cleveland-CA)(Yajko-PA)(Redman-IL)
- 4780 0145 YVLA LV de Carabobo:w/ pop U.S. and LA vocals (342 9/19 Brooks-CT)(Vilar6-PR)(Laves-TX)(Redman-IL)(Miller-OH)(Vecchiola-PA)
- 4800 0155 YVMO R. Lara:w/ anmts amid fanfare, ID seemingly "Para Lara, R. Lara" (433 10/10 Vecchiola-PA)
- 4810 2310 YVMG R. Popular:w/group SS vocals, OM/YL tlk and comments 0400* (343 9/16 Brooks-CT)(333 0015 9/25 Yajko-PA)
- 4820 2305 YVWJ R. Tricolor:w/nx, ID, into LA mx pgm (333 9/20 Brooks-CT) (343 0348 9/21 Laves-TX)
- 4850 0353 YV?? R. Capital:w/ pop mx pgm MÚSICA MUNDIAL, 0401 ID (333 9/21 Laves-TX)
- 4860 0940 YVQE R. Maracaibo:w/ OM ancr., ads, ballads (342 9/13 Earhart-PA)(422 0317 9/26 Cleveland-CA)(444 0330 10/10 Redman-IL)
- 4870 0430 YVKP R. Tropical:w/pop LA mx, mention of "La Pantera" after each song. S/off @ 0501 w/ID as "R-A-I R-A-I, R. Tropical" (343 10/5 Laves-TX)(343 0130 10/9 Whitehead-MA)
- 4880 0100 YVMS R. Unversow/ LA mx, ads, ID (333 9/27 Tannenwald-NY) (Cleveland-CA)(Redman-IL)(Vecchiola-PA)(Jones-MS)
- 4890 0235 YVKB Radiodifusora Venezuela:w/ LA & U.S. pop mx (333 9/21 Barber-MANITOBA)(Jones-MS)(Cleveland-CA)(Thompson-NM) (Redman-IL)(Tannenwald-NY)(Miklejewski-MN)
- 15400 1304 YVRO R. Nacional de Venezuela:w/ AA tlk incl. ID, mixed AA & LA mx to 1403 when back to SS w/nmx, cl. mx. EE noted 2215 to past 2300 w/ national mx, tlk on Venezuela. ID lists // freqs of 11750 & 6170 tho not heard on either. EBC QRM (253 2215 10/10 Hauser-OK)(311 1403 10/9 Miklejewski-MN) (433 2200 9/22 Zilmer-WI)

SWBC DX EUROPE / AFRICA



Robert Butterfield
38 Hamilton Road
Belmont, Massachusetts
02178 U.S.A.

Deadline: 15th
Times & Dates: GMT
Frequencies: kHz

-Africa-

ALGERIA

- 11910~~4~~ 0920 Radiodiffusion Television Algerienne: Fr w/ string mx, tlk (252 10/4 Earhart-PA)
11965 2035 RTVA: Fr w/ Ar mx, ancmts by YL (444 8/27 Rojewski-WA)

ANGOLA

- 3290~~4~~ 0642 R. Clube do Bié: Port, ancmts w/ Eng songs (322 9/26 Bixby-CA)
4820 0510 Emissora Oficial: Port/vern w/ afro mx, ID, tlk, hrd after HRVC s/off (332 10/3 Zimarowski-MA)
5045 1356 R. Clube de Benguela: Port w/ YL tlk, IS, 1400 AP, ID, nx, hrd daily (242 9/19 Bixby-CA)
5060 0527 R. Clube do Huambo: Port tlk, Angolian mx (242 9/15 Snyder/Bodell-CA)
7245 1518 Emissora Oficial: Port Angolian mx (232 9/14 Snyder/Bodell-CA) // 9535 9660
9535 1423 Emissora Oficial: Port/vern w/ political speeches, 1448 ID, live coverage of airport event, still hrd past 1630 (343 10/10 Hauser-OK) Last two are long path receptions. rfb.
9630 1528 R. Clube de Angola: Port w/ native mx, 1530 three chimes, nx, Eng pop mx (242 9/13 Bixby-CA)
11875 1450 Emissora Oficial: Port tlk by YL (444 9/13 Snyder/Bodell-CA)

ASCENSION ISLAND

- 6005 0447 BBC, Atlantic Relay: Eng w/ Ulster rpt, stocks (434 10/11 Naylor-CA); (444 0710 9/15 Jacobson-IL)
9580 2100 BBC, Atlantic Relay: Eng "World Radio Club" (444 9/26 Rojewski-WA); (434 0437 10/11 Naylor-CA)
15105 1642 BBC, Atlantic Relay: Eng w/ IS, s/on w/ QTH, to S Afr (343 9/28 White-FL)

BOTSWANA

- 4845 0420 R. Botswana: Setswana w/ request prgr, native mx (322 9/29 Cleveland-CA); (332 0440 9/30 Snyder-CA); (333 9/13 0442 Snyder/Bodell-CA)

CAMEROON

- 4972A 2225 R. Yaounde: (TENT) Fr? w/ drum mx, afro chants (332 10/2 Vecchiola-PA)

CAPE VERDE ISLANDS

- 3930 2341 R. Barlavento: Port w/ pop mx, hvy ARO QRM (322 9/16 Miller-OH)

CHAD

- 4904.5 2154 Radiodiffusion Nationale Tchadienne: Ar tlk, anthem @ 2159, s/off @ 2200 (343 10/9 White-FL)

CONGO, PEOPLE'S REPUBLIC OF THE

- 4765 0430 Radiodiffusion Television Congolaise: Fr/vern w/ native mx (322 10/4 Cleveland-CA); (232 0521 Snyder-Bodell-CA)

DAHOMEY

4870 *0510 Radiodiffusion du Dahomey: Fr w/ "La Voix de la Revolution" s/on, anthem, ID, afro mx, tlk (332 10/1 Zimarowski-MA); (242 0525 10/2 Bodell-OR); (222 2108 10/8 Junqua-JAPAN)

EGYPT, ARAB REPUBLIC OF

9475 0210 R. Cairo: Eng mailbag (433 9/19 Earhart-PA); (545 0320 9/20 Patterson-NC); (444 0300 9/18 Jacobson-IL)
 9805 2240 R. Cairo: Eng w/ "Listener's Corner" (444 9/29 Rojewski-WA); (444 2205 9/9 DeVries-MA); (444 2240 9/13 Yajko-PA)
 15475 1215 R. Cairo: Ar chants (433 9/20 Zilmer-WI)

EQUATORIAL GUINEA

6250 0700 R. Malabo: Sp (?) with radio opera, fading (323 ?/? Shaw-CA) Presume this is the station you meant, Malabo being its new name. Date? rfb.

ETHIOPIA

6185t 0343 R. Ethiopia: Ar (or possibly Amharic) w/ afro mx, ID @ 0400 but not positively hrd (322 9/23 White-FL)
 7165 0325 ETLF: U/lang w/ IS under ARO QRM (311 9/19 Hansen-AZ)

GABON

4777 2230 Radiodiffusion Television Gabonaise: Fr w/ mx, tlk (343 9/18 Brooks-CT); (433 2250 9/20 Vecchiola-PA); (333 0510 9/25 Cleveland-CA)
 7135 0755 RTVG: Fr w/ tlk to 0757, mx, ancmt, off @ 0800 (332 10/4 Earhart-PA)

GAMBIA

4820 *0625 R. Gambia: Eng w/ IS, s/on, into Ar Koran Reading (232 10/3 Zimarowski-MA)

GHANA

3366 0551 Ghana Broadcasting Corporation, Accra: Eng w/ U.S. pops, tlk (353 10/3 Bixby-CA)
 4915 2245 GBC, Accra: Eng w/ nx (434 9/17 Patterson-NC); (444 2250 9/13 Vecchiola-PA); (333 0601 9/15 Zimarowski-MA); (454 2150 in Vern 9/16 Earhart-PA)
 4980 2125 GBC, Ejura: Eng w/ rel prgr, ID @ 2147 (333 10/8 Junqua-JAPAN); (443 2230 9/16 Earhart-PA)
 11850 2022 R. Ghana (GBC): Eng w/ commtry (323 9/14 Yajko-PA); (333 9/25 2000 Van Fossen-OH)

GUINEA-BISSAU

5040 *0555 R. Bissau: Port w/ drumbeat IS, s/on (333 9/15 Zimarowski-MA); (343 0556 9/20 Earhart-PA); (222 2336 9/20 Gavaras-MN); (322 2336 9/23 Miller-OH)

IVORY COAST

4940 2230 Radiodiffusion Television Ivoirienne: Fr w/ commtry, ancmt by YL @ 2230 (443 10/2 Vecchiola-PA)
 11920 2215 RTVI: Fr w/ afro mx, ID as "Ici Abidjan" (344 9/29 Barber-MANITOBA)

LESOTHO

4800 0454 R. Lesotho: Eng w/ pop mx, BBC nx @ 0500, local ID @ 0514, followed by lt mx (342 9/28 Brooks-CT)

LIBERIA

4770 2200 ELWA: Eng w/ VOA nx relay, local ID, rel mx (353 9/17 Brooks-CT); (344 2240 9/13 Vecchiola-PA); (342 0611 9/26 Bixby-CA); (333 2145 10/8 Junqua-JAPAN)
 6035 0510 VOA, Monrovia: Eng "Breakfast Show" (434 9/24 Wirrell-MA); (434 0523 10/11 Maylor-CA)
 7195 *0259 VOA, Monrovia: Eng "African Safari" (433 9/30 Jones-MS)
 7280 0405 VOA, Monrovia: Eng "Breakfast Show" (444 10/3 DeVries-MA); (432 0316 9/19 Cleveland-CA)
 11950 2040 ELWA: Eng "Back to the Bible" (433 9/16 White-FL)
 17870 2048 VOA, Monrovia: Eng "Africana" (343 9/23 Zimarowski-MA)

MALAGASY REPUBLIC

11730 2002 R. Nederland, Talata: Eng "Happy Station" ex 9585 (--- 9/7 Hauser-OK);(444 2050 10/5 Pimblett-ALBERTA)
 11740 1433 R. Nederland, Talata: Eng "What's New" (343 10/11 Naylor-CA)
 17730 1535 Radio Television Malagasy: Eng w/ afro nx, some U.S. pops, 1555 more nx, 1600 chimes, U/lang (222 9/20 Bixby-CA);(343 1513 9/16 White-FL)

MALI

4785 2227 R. Mali: Fr w/ drama, nx, anthem, off @ 2400 (432 9/16+ Brooks-CT);(333 2235 Vecchiola-PA);(322 2315 9/17 Miller-OH)
 5995 2228 R. Mali: Ar/Fr/vern w/ soul mx, local mx, drama, nx @ 2230, Off @ 0002, 2358 R. Vaticana IS s/on (333 9/15 Brooks-CT); (432+ 2147 9/23 Earhart-PA)

MAURITANIA

4850 2144 Radiodiffusion Nationale de Mauritanie: Ar/Fr w/ Ar nx @ 2200, Fr nx @ 2245, drama, chants, off 2306 (343 9/16-9/18 Brooks-CT);(422 2145 9/15 Vecchiola-PA);(333 0704 9/21 Gavaras-MN);(444 -/- Shaw-CA)

MOROCCO

7190 0300 VOA, Tangier: Eng nx, mx, commtry (454 10/5 Wirrell-MA)
 9615 2245 Radiodiffusion-Television Marocaine: Ar mx, ID (344 9/29 Barber-MANITOBA);(343 0155 9/22 Bodell-OR)
 15205 1847 VOA, Tangier: Eng "Country Music USA" (444 9/13 Rojewski-WA)

MOZAMBIQUE

3210 0353 R. Mocambique: Port w/ IS sounding like contemporary mx, 0400 choral singing (353 9/23 Bixby-CA)
 3265 0370 R. Mocambique: Eng pop mx (322 10/8 Cleveland-CA);(353 0405 9/23 Bixby-CA)
 4923 0420 R. Mocambique: Eng/Afrikaans w/ pop mx, ads (242 10/2 Bodell-OR) From Gerry Wood, R. RSA, 23rd September 1975: "R. Clube de Mocambique, R. Pax, and AeroClube de Beira have been Nationalized and are now known as R. Mozambique ... Uncertain of future of LM Radio run by SABC via tape from Johannesburg."

NIGER

5020 *0532 Office de Radiodiffusion Television du Niger: Fr w/ ID after national atham, Koran reading (333 9/15 Snyder/Bodell-CA); (242 0545 10/3 Bixby-CA);(352 0545 9/20 Earhart-PA);(232 0608 9/15 Zimarowski-MA)

NIGERIA

6025 2240 Nigerian Broadcasting Corporation, Enugu: Eng w/ mx prgr, ID, nx @ 2300, ID, s/off @ 2305 (333 10/7 Gavaras-MN)
 6195 2146 NBC, Sokoto: Eng/Hausa w/ Eng soul mx, local mx, ID @ 2158 and 2224 and 2259 ... Koran chants from 2245, anthem, off 2303 (332 9/22-9/25 Brooks-CT)
 7275 0550 Voice of Nigeria (NBC): Eng nx, Nigerian mx, (233 9/28 Johnstone-CA);(433 0600 9/26 Schwartz-DE)

RHODESIA

3394m 0400 Rhodesia Broadcasting Corporation: Eng nx, ID, pop mx (322 10/4 Zimarowski-MA);(332 0355 10/4 Vecchiola-PA);(232 0405 9/18 Hansen-AZ);(232 0425 9/15 Snyder-Bodell-CA)

RWANDA

7225 0435 Deutsche Welle, Kigali: Eng "Top 40" (333 9/26 Leamy-OH)
 9735 1523 Deutsche Welle, Kigali: Fr nx (---4 10/10 Hauser-OK)
 11905 0604 Deutsche Welle, Kigali: Eng w/ nx, ID as African Service. (332 9/28 Snyder-CA)
 17765 1225 Deutsche Welle, Kigali: Eng w/ African Service (333 10/1 Smith-FL)

SPEEDX LOGGING REPORT FORMS ARE AVAILABLE FROM HQ.

SEYCHELLES

11865 1225 Far East Broadcasting Association: Eng w/ IS, ID, rel mx (332 9/28 Zilmer-WI)
 15325 1545 FEBA: Eng w/ "DI Postbag" finally audible, lots of tips (-4 9/24 Hauser-OK);(344 1600 9/13 Snyder/Bodell-CA);(333 1600 10/4 Leamy-OH);(252 1612 9/20 Bixby-CA)

SIERRA LEONE

3316 2235 Sierra Leone Broadcasting Service: Eng w/ nx, comtry (453 9/22 Vecchiola-PA);(333 ?/? 2335* Miller-OH);(343 0601 9/15 Snyder/Bodell-CA);(333 0615 9/21 Gavaras-MN)

SOUTH AFRICA

3980 0300 SABC, Springbok R.: Eng/Afrikaans w/ mx, Pall Mall ad, tlk (353 9/10 Earhart-PA);(333 0355 10/9 Cleveland-CA);(312 0430 9/13 Talbot-WI)
 3995 0401 R. RSA: Eng nx, ARO CRM (432 10/9 Cleveland-CA);(322 0256 9/10 Earhart-PA)
 4810 0355 SABC, Sprinkbok R.: Eng/Afrikaans w/ mx, ID, ads, "Birthday Book" segment, R. Popular s/off at 0400 leaves just a het which disappears at 0406, Galapagos? (343 9/17 Brooks-CT);(333 0331 9/21 Barber-MANITOBA);(434 0400 9/26 Leamy-OH);(443 0415 9/26 Cleveland-CA);(433 10/6 Wirrell-MA)
 4835 0346 SABC: Eng nx (333 9/21 Barber-MANITOBA);(343 0410 9/24 Hansen-AZ);(443 0412 9/26 Cleveland-CA)
 4875 0300 SABC: Afrikaans w/ mx after nx (232 9/21 Barber-MANITOBA);(443 0503 9/25 Cleveland-CA)
 5980 0410 R. RSA: Eng nx, mx (333 9/28 Miller-CA);(333 2220 9/18 Jacobson-IL)
 7270 0300 R. RSA: Eng nx (433 10/9 Pearson-PA);(433 0319 9/19 Cleveland-CA);(443 0400 9/30 Miller-CA);(433 0425 9/20 Hansen-AZ)
 9515 2309 R. RSA: Eng prgr, testing on this fqy instead of regular 9525, announcing 9525 @ 2309! noted this date only (--- 10/8 Hauser-OK);(444 0415 10/11 Naylor-CA)
 9525 2235 R. RSA: Eng w/ mailbag, nx (433 9/14 DeVries-MA);(322 0300 10/7 Benjamin-CA)
 9560 1414 SABC: Afrikaans w/ Rugby match // 11885 (434 9/13 Snyder/Bodell-CA)
 9680 1418 SABC: Eng w/ Rugby match // 11790 (322 9/13 Snyder/Bodell-CA)
 9710 1416 SABC, Springbok R.: Eng pop mx, tlk // 11935 (333 9/13 Snyder/Bodell-CA) Looks like we have a pair of quick dial spinners here!
 11900 2230 R. RSA: Eng w/ jazz mx, (534 10/11 Van Possen-OH)
 21535 1530 R. RSA: Eng to C & E Africa (333 10/5 Kaufman-NY);(544 1320 10/12 Van Possen-OH);(343 1521 9/21 Smith-FL) South Africa will finally go into television land soon under close watch of the censor. We might see some radio changes. rfb.

SOMALIA

9585 1816 R. Mogadishu: Ar singing type mx (233 10/2 Bodell-OR);(444 2015 9/27 Barber-MANITOBA);(433 in Somali @ 2100* 9/13 Miller-OH);(333 2103* 9/18 Schwartz-DE);(333 2045 10/3 Gavaras-MN)

SPANISH SAHARA

11805 2035 R. Sahara: Ar w/ mx, nx, two IDs (222 9/26 Barber-MANITOBA);(141 2215 TENT 9/23 Snyder-CA);(222 0712 9/24 Bodell-OR)

TANZANIA

9750t 1435 R. Tanzania: Eng w/ American accented discussion of African politics, 1442 mx, 1456 abrupt off, sked to 1600 Sat/Sun only (--- 10/11 Hauser-OK)

TÓGO

5047 2257 Radiodiffusion du Togo: Fr nx, anthem @ 2300, off @ 2301 (343 9/24 Miller-OH);(443 2205 9/16 Earhart-PA);(322 2301* 10/5 Jones-MS);(332 0537 9/13 Zimarowski-MA);(443 0537 10/2 Wirrell-MA)

TUNISIA
11970 2238 Radiodiffusion Television Tunisienne: Ar mx, ID @ 2345 (222 9/23 Barber-MANITOBA);(333 1900 9/16 Zimarowski-MA);(333 1815 TENT Lovett-OH)

UPPER VOLTA
4815 2250 Radiodiffusion-Television Voltaique: Fr w/ Eng soul mx and local vern vocals, anthem, off @ 0001 (333 9/17 & 18 Brooks-CT)

ZAIRE
7115 *0400 R. Bandundu: U/lang w/ s/on, afro mx, regional station (222 9/15 Snyder/Bodell-CA)
7117 0327 La Voix du Zaire: U/lang tlk (333 9/15 Snyder/Bodell-CA); (322 0330 9/29 on 7115 Zilmer-WI) Zaire on 7115 here, is my meter off? rfb.

ZAMBIA
4911 0410 R. Zambia: U/lang tlk, ID, mx (343 9/15 Snyder/Bodell-CA); (222 0515 w/ end of Eng 9/22 Schwartz-DE)

-Europe-

ALBANIA
6200 0130 R. Tirana: Eng nx, commtry (444 9/22 Wirrell-MA)
7065 0015 R. Tirana: Eng commtry (444 9/19 Yajko-PA)
7120 0130 R. Peking via Tirana: Eng tlk, mx (433 9/18 Earhart-PA)
9480 1650 R. Tirana: Eng commtry, mx (423 9/8 DeVries-MA)

AUSTRIA
6155 0132 Osterreichischer Rundfunk: Eng pol tlk (433 9/17 Yajko-PA); (434 0136 10/2 Smith-TN);(332 0149 9/22 Wirrell-MA)

BELGIUM
9755 2305 Radiodiffusion Television Belge: Eng tlk on opera (433 9/15 Yajko-PA)

BULGARIA
6070 1955 R. Sofia: Eng w/ DX prgr (322 9/19 Cawthorne-ENGLAND)
9700 *0000 R. Sofia: Eng w/ s/on, fqys, nx (333 9/25 Jacobson-IL);(323 0015 9/23 Bethge-MO)
15310 2113 R. Sofia: Eng nx, Letterbox, not often hrd this fqy (343 9/7 Hauser-OK)

CZECHOSLOVAKIA
5930 0135 R. Prague: Eng w/ DX tips (323 9/19 Bethge-MO)
6055 0000 R. Prague: Multi-lingual w/ Inter-programme of mx, tlk (322 9/24 Brooks-CT)
7345 0130 R. Prague: Eng w/ cl mx (322 9/28 Smith-FL);(322 0312 9/19 Cleveland-CA);(444 0320 9/21 DeVries-MA);(232 0330 9/23 Marti-CA) // 5930 9540 9630 9740 11990

DENMARK
15170nF 2150 R. Denmark: Danish nx, commtry (444 9/23 Schwartz-DE)

FINLAND
11755 *2030 R. Finland: Eng s/on, nx, spts, Finn DX (453 9/23 Cawthorne-ENGLAND)
15185 1400 R. Finland: Eng w/ IS, ID, nx (444 9/18 DeVries-MA);(332 1400 9/23 Cleveland-CA);(444 1811 9/22 White-FL)

FRANCE
11745 1700 R. France International: Eng "Paris Calling Africa" // 11845 11905 (333 10/9 Zilmer-WI)
15200 1705 RFI: Eng w/ prgr notes, mx // 15200 15300 15360 (444 9/13 Yajko-PA);(443 1725 9/14 Jones-MS);(444 1745 9/21 Gavaras-MN)
15210 1711 RFI: Eng "Paris Calling Africa" (443 9/21 Snyder-CA)
15425 1700 RFI: Eng "Paris Calling Africa" (333 9/21 Lovett-OH)
21620 1715 RFI: Eng "Paris Calling Africa" (252 9/17 Zilmer-WI)

GERMANY, DEMOCRATIC REPUBLIC OF

7260 *2115 R. Berlin International: Eng nx (444 9/28 Cawthorne-ENGLAND)
 9730 1855 RBI: Eng mailbag prgr, comtry (333 9/16 DeVries-MA)
 15390 2010 RBI: Eng nx, mx, Afr svc (433 9/23 Yajko-PA)

GERMANY, FEDERAL REPUBLIC OF

3995 0227 Deutsche Welle: Ger w/ IS under ARO QRM (222 9/22 Lovett-OH)
 6075 0530 DW: Eng nx, comtry (333 9/28 Johnstone-CA)
 6100 0140 DW: Eng nx (434 9/17 Bethge-MO)
 6180 0530 DW: Eng prgr (444 9/13 Berstein-GA)
 7285 0200 DW: Eng nx, Asian service (333 9/23 Yajko-PA)
 11850 0940 DW: Eng w/ ID, nx, mx, ID, intvw (353 10/4 Earhart-PA)
 15135 1800 DW: Eng prgr (232 10/5 Zeigler-MI)
 17875 1225 DW: Eng w/ contest nx (443 9/21 Zilmer-WI)

GREAT BRITAIN

3952 0310 BBC: Eng w/ IS to 0315 s/on (222 9/30 Pimblett-ALBERTA)
 6055 2300 BBC: Eng nx (322 9/24 Brooks-CT)
 7200 0446 VOA, Wofferton: Eng "Breakfast Show" (232 9/14 Rojewski-WA)
 9510 0100 BBC: Eng nx, comtry (544 10/7 Van Fossen-OH);(433 0320 10/3 DeVries-MA)
 21710 1330 BBC: Eng "World Radio Club" (352 9/17 Zilmer-WI);(222 1210 10/1 Smith-FL)

GREECE

9520 *0015 EIRT: Eng w/ local nx for 15 min, IS @ 0015 on flute "Once I was a shepard boy" (322 9/20 Bouchy-OH) From Glenn Hauser: "I haven't been able to hear it yet, but note this news from BBC World Radio Club 10/1, newly named 'Voice of Greece' has opened a NA service at 1200-1245, 15 min each of Greek, English and French (Hauser-OK)
 7275 *0158 VOA, Kavala: Eng ancmnt after IS into Urdu prgr (555 9/10 Smith-FL)
 17760 2000 EIRT: E Eur Lang after flute IS, ID (444 9/20 Gavaras-MN)

HOLLAND

9715 2209 R. Nederland: Eng "His and Hers" (444 9/23 Yajko-PA);(444 2212 9/29 Smith-TN);(352 0604 9/18 Smith-FL)
 15415 1500 R. Nedrland: Eng "Happy Station" Sunday prgr (343 9/21 Brooks-CT)

HUNGARY

6000 0200 R. Budapest: Eng nx, comtry (434 9/24 Van Fossen-OH)
 9655 2130 R. Budapest: Eng nx, request mx (433 9/19 Zilmer-WI)
 9833 0315 R. Budapest: Eng w/ hungarian folk mx, rock mx (454 9/19 white-FL)

ITALY

6010nf 0108 Radiotelevisione Italiana: Eng nx, comtry, mx (544 10/1 Van Fossen-OH);(--- 9/10 0120 into Fr Hauser-OK) // 9575

LUXEMBOURG

6090 0002 R. Luxembourg: Eng w/ Daily Mirror radio nx, rock mx prgr (333 10/1 Smith-TN);(433 0015 9/15 Jacobson-IL);(343 0030 9/18 Kummer-KY);(444 0040 9/28 DeVries-MA);(333 0100 9/23 Schwartz-DE)
 15350 1410 R. Luxembourg: Fr mx, IDs (343 9/21 Brooks-CT)

MALTA

6100 0150 Deutsche Welle, Cyclops: Eng w/ local ID after prgr in Eng (444 9/26 Leamy-OH);(333 0130 9/23 Pimblett-ALBERTA);(444 0146 10/6 Smith-TN)
 9755 2020 Adventist World Radio via Cyclops: Eng 2020-2030 w/ World DX Club, 2030-2045 "Voice of Hope" prgr, address (433 9/20 Hoffman-PA)
 2045 R. Malta via Cyclops: Eng w/ fast paced prgr of nx, mx, comtry, "Malta Calling" IDs, address (433 9/20 Hoffman-PA); (444 9/20 2045 Brooks-CT)
 2100 IBRA Radio via Cyclops: Eng rel prgr, Swedish address for reports (333 9/20 Talbot-WI)

MONACO
7105 0630 Trans World Radio, Monaco: Eng rel prgr (--3 9/21 Lance-AZ)
9640 0945 TWR: Eng "DX Special" (352 9/27 Earhart-PA) Note the
11815 msn listed here in Aug was erroneous. rfb.

NORWAY
11860 1800 R. Norway: Eng nx (433 9/28 Pimblett-ALBERTA);(433 2400
9/15 Rojewski-WA)

POLAND
6135 2230 Polish R.: Eng commtry, feature (343 9/15 Brooks-CT)
9540 1610 Polish R.: Eng features (333 9/8 DeVries-MA)

PORTUGAL
6025 *0230 R. Portugal: Eng w/ ID, nx, tlks (322 10/9 Pearson-PA);(545
0231 10/7 Van Fossen-OH);(434 0432 9/22 Wirrell-MA);(333
0440 9/14 Berstein-GA)

ROMANIA
9570 0142 R. Bucharest: Eng tlk on U.N. (434 9/23 Yajko-PA);(323 0235
9/5 Leamy-OH)

RSPSR, EUROPEAN
11960 *0330 R. Moscow, Voronezh: Eng s/on, fqys, nx, commtry (343 10/11
Naylor-CA)

SICILY
6060 2317 Radiotelevisione Italiana, Caltanissetta: It/Fr/Ger/Eng w/
operatic mx, Fr nx 2330, Ger nx 2334, pop mx, Eng nx 0003,
multilingual IDs (332 9/23 Brooks-CT);(243 0240 10/9 White-
FL)

SPAIN
6065 0100 R. Nacional de Espana: Eng mx, nx, commtry (433 10/2 Kummer-
KY);(333 0128 9/23 Yajko-PA);(433 9/24 C300 Hoffman-PA);(423
0310 9/28 DeVries-MA);(423 0333 9/24 Marti-CA)

SWEDEN
6035 2300 R. Sweden: Eng nx to ECNA at reduced power of 25kw, down
from 350 kw (--- 9/23 Zilmer-WI)
9605 2317 R. Sweden: Eng SCDXers // 6035 (11705 not on air due to
antenna problems);(422 9/23 Zilmer-WI);(433 2305 9/14
DeVries-MA);(433 2304 9/23 Yajko-PA);(454 2300 9/21 Earhart-
PA)
15305 *1400 R. Sweden: Eng to NA (444 9/21+ Brooks-CT);(333 1400 9/14
Yajko-PA)

SWITZERLAND
6135 0145 SBC: Eng to NA // 5965 (432);(444 9/24+ Brooks-CT);(545 0145
10/11 Van Fossen-OH);(434 0148 9/23 Yajko-PA);(433 0150
9/26 Rojewski-WA);(454 0152 9/22 Wirrell-MA)
7210 0600 International Committee of the Red Cross, Geneva: Eng w/
Red Cross nx (454 9/26 Wirrell-MA);(242 0655 9/26 Bixby-CA)

USSR
9530 2305 R. Moscow: Eng w/ commtry (433 9/26 DeVries-MA);(544 0133
10/2 Van Fossen-OH)
*0030 R. Vilnius: Eng commtry, nx, mx (333 9/20 Bouchy-OH)
9785 1453 R. Station Peace and Progress: Eng nx (242 10/6 Herbold-CA)
17900 2343 R. Moscow: Eng w/ Russian mx (333 9/22 Yajko-PA)

YUGOSLAVIA
9620 *2200 R. Belgrade: Eng w/ IS, ID, nx (322 10/1 Talbot-WI);(222 9/15
Leamy-OH);(323 2204 9/13 Yajko-PA)

EUROPE/AFRICA ROUNDUP:

Thanks to new reporters Jules Anderson, Lance Barber, James Bethage,
J.C. Bouchy, Cedric Cawthorne, Linda DeVries, George Hansen, Jim Johnstone,
Robb Leamy, Spence Naylor, W.J. Pearson, and welcome back to Ed Shaw.

New England DX Society - NEDS: All New Englanders, the first issue of the
NEDS Newsletter is out, if you live in the six state region and haven't
received your free copy, write to Henry Michalanka, 14 Brook Street, Central
Falls, Rhode Island, 02863. He'll send one along. More next month ...

ASIA-OCEANIA

BOB BODELL - EDITOR
5230 S.E. 48th AVE
PORTLAND, OR 97206

DEADLINE: 15th of the month



Frequencies in KiloHertz Time in GMT month/day format
A=approximate L=listed M=measured T=tentative *0000=S/on 0000*=S/off

FREQ	TIME	SIO	LOCATION	
AFGHANISTAN				
4775	1330	222	CA	R. Afghanistan: fair to weak flutes, strings, OM tlk @ 1330, male vocals to fade out around 1430 (Shaw 9/25)
BRUNET				
4865	1425	222	OR	R. Brunei: Eng w/OM tlk on economic condx (Jessen 10/12)
7215	1425	444	AZ	RB: Eng w/opera mx, 1447* (Hansen 9/28) welcome back!
BURMA				
BBS=Burma Broadcasting Service				
5040	1140	322	MAN	BBS: Burmese mx, ID (Barber 9/22), and in Burmese by White FL @ 1104, Schwartz DE @ 1130, Laves TX @ 1246, Jessen OR @ 1428, in Eng by Snyder CA @ 1445.....
CAMBODIA				
4907	----	323	CA	Phnom Penh R: YL tlk in Camb., severe QRM (Ed Shaw 9/25)
CHINA, P. R. OF RADIO PEKING				
CJKT=Central Peoples Broadcasting Station				
2475	----	222	CA	Chekiang JKT, Hangchow: OM w/Chinese tlk (E. Shaw 9/25)
2600	1344	322	OR	PLA Fukien: YL tlk in Chinese, choral mx (Jessen 10/10)
3390	1205	222	MN	R. Peking?: OM, YL tlk, nx (Miklejewski 9/18)
3400	1153	242	MS	PLA Fukien: Chinese? w/YL tlk (Jones 10/4)
3450	1355	333	CA	CJKT: Chinese w/vocal mx, OM annx (Cleveland 10/7)
3535	1351	433	CA	PLA Fukien: Chinese music (Cleveland 9/18)
3900	1435	343	OR	Fukien JKT, Hailar: Chinese w/OM, YL tlk (Jessen 10/12)
3940	1340	433	CA	Hupeì JKT: Chinese w/Eng lessons (Cleveland 10/6)
4045	1350	432	CA	PLA Fukien: Chinese music, // 4330 (Cleveland 9/30)
4068	1350	433	CA	Huhehot JKT: Mongolian(WRTH), w/tlk, mx (Cleveland 9/30)
4840	0950	333	CA	Harbin or PLA: Chinese singing (E. Shaw 10/9), and PLA by Miklejewski MN @ 1210, Jones MS @ 1145, Jessen OR..
4915	1235	222	TX	Kwangsì JKT, Nanning: Oriental mx, OM whaling (you mean walling) (Laves 10/5), w/Eng lessons @1347 (Bixby 9/17)
4925	1030	343	CA	Heilungkiang JKT, Harbin: childrens' chorale, 'Haer-pin', (E. Shaw 9/25), also by Laves TX, Bixby CA, 0840*
5020	1344	232	CA	Kiangsi JKT: Chinese tlk by OM (Bixby 9/17)
5040	0950	343	OR	Foochow 1: Chinese w/YL tlk (Jessen 9/24)
5200	1225	333	MN	PLA Fukien: Chinese tlk, // 4840 (Miklejewski 9/27)
5900	1210	322	MAN	PLA: Chinese w/editorial cmnty (Barber 9/26)
5935	1225	333	MAN	Lhasa: Chinese mx, 'CJKT' ID (Barber 9/26)
6000	0905	242	CA	R. Peking: Chinese tlk by OM, heavy QRM (Dawson 10/12)
6250A	1218	232	MS	RP: Eng w/ID, cmy (Jones 10/4)
6290	2054	333	ENG	RP: Eng w/political tlk (Cawthorne 9/29), and @ 1303 by Miklejewski MN, in Chinese @ *1100 by Jones MS....
6400	1437	343	OR	PLA Fukien: a "Chinese soprano" (Jessen 10/12)
6665	0950	253	CA	RP: Chinese w/a YL singing (Dawson 9/13)
6860	2030	343	ENG	RP: Eng w/nx, // 7590 (Cawthorne 9/29)
7510	1155	333	MAN	RP: Chi. w/ID "Chungkuo Senmin Kwanpo Tientai" (Barber)
9020	1624	434	CA	RP: Chinese tlk by YL (Stanford Shaw 9/25)(Zink 9/29)
9375	0345	252	CA	RP: Chinese music (Dawson 10/1)
9390	1255*	454	MN	RP: Span tlk, ID 'Aqui Radio Peking' (Miklejewski 9/17)

ASIA RADIO
Afghanistan

CHINA (continued)

9460	0950	442	PA	R. Peking: Eng w/tlk, mx, ID, Pakistan 1000* (Earhart)
9490	1230	322	MAN	RP: Chinese w/opera music (Barber 9/17)
9790	0300	323	GA	RP: English programme (Bernstein 9/18)
9860	1530	433	WA	RP: Eng w/nx, comment (Rojewski 9/26)(Miklejewski MN)
9900	1304	242	OK	RP: w/Malay ID @ 1304 (Hauser 9/8)
9920	1330	333	MAN	RP: Uighur w/Chinese mx (Barber 9/20)
9945	1343	344	MAN	RP: Chinese w/music (Barber 9/20)
9965	1353	232	MAN	RP: Chinese mx, not // 9920 or 9945 (Barber 9/20)
11605A*	1259	322	MN	RP: U/lang tlk, ID, freq mentions Vietnam (Miklejewski)
11675	0000	333	MA	RP: Eng IS, ID, nx (Linda DeVries 9/29), and by Yajko PA @ 0122, Jacobson IL @ *0100, Miklejewski MN 1125*..
11685	1145	344	MN	RP: Spanish to 1255 then 'Internationale' (Miklejewski 9/20), 1204 in Eng by Barber MAN, Yajko PA.....
11720	*0830	342	FL	RP: 'East Is Red' S/on, Eng nx, ID, mx (Smith 9/25)
11945	0005	333	MI	RP: YL in Eng, // 15060 (323) (Zeigler 9/19), also by Marti CA @ 0157*, Brooks CT, Schwartz DE, Yajko PA....
12055	0138	434	PA	RP: Eng w/sports (Yajko 9/23) congrats on the SPR-4, reb.
12120	0315	222	CA	RP: Chinese songs (S. Shaw 9/25), Jessen OR @ 0020
12150	0010	333	MA	RP?: Chinese? w/children songs, Oriental mx (DeVries)
15030	1745	232	OH	RP: Home svce w/wailing (Lovett 10/5)(Barber MAN @ 0113)
15060	0040	333	KY	RP: Eng narrative, mx on Tibet (Kummer 9/21)(Barber MAN)
15095	*0200	333	MAN	RP: Mandarin pgrm, ID (Barber 9/22)(Yajko PA @ 0110)
15265	*0030	333	PA	RP: S/on in Chinese w/tlk (Yajko 9/16)
15270	*1300	432	WI	RP: Eng nx (Zilmer 9/17), and by Yajko PA 9/20
15380	*0030	343	PA	RP: S/on w/National Anthem (Yajko 9/23)
17650	0109	333	MAN	RP: nx in Spanish, mx (Barber 9/24)(Thompson NM 9/20)

DODECANESE ISLANDS

7205	2156	323	FL	VOA Rhodes: Arabic to 2100, Eng to 2200* (White 10/5)
------	------	-----	----	---

INDIA

AIR=All India Radio

3235	1342	242	CA	AIR Gauhati: U/lang tlk by YL, OM (Snyder 10/4)
4920	1432	131	OR	AIR Madras: weak w/Eng nx by OM (Bodell 10/6)
9525	1906	422	MA	AIR Aligarh: Eng cmt by YL, local mx (DeVries 9/14), also White FL @ 2156, Yajko Pa @ 1800, Miklejewski MN.
9912	2222	232	TX	AIR Delhi: Eng tlk, ID, // 9525 (Laves 9/19)(Zilmer WI)
9950mf	1537	322	JAPAN	AIR Delhi: Eng YL w/nx, OM w/cmt, mixing w/unid Russ., 9/26, 1330 in Hindi 10/3 (Junqua) BBC says 9952, reb..
11620	2005	343	ENG	AIR Aligarh: Eng nx (Cawthorne 9/6)(Miklejewski MN)
11810	1452	343	CA	AIR Delhi: Eng w/pgrm sked, 1455 nx (Snyder 9/20)
15180t	1520	333	DE	AIR Delhi: U/lang, Indian mx, annx (Schwartz 9/21)



INDONESIA

RRI=Radio Republik Indonesia

2503	1125	---	CA	RDK Bandung: OM tlk in Indonesian (E. Shaw 9/25)
2830	1110	143	CA	RRI Tandjung Karang: OM tlk, pop mx (E. Shaw 10/9)
3205	1340	322	CA	RRI Bandung: YL w/Indo music (Cleveland 9/24)
3250	1345	242	CA	RRI Banjarmasin: Indo songs (Birby 9/30)(E. Shaw 9/25)
3277	1348	422	CA	RRI Jakarta: Indo tlk, mx (Cleveland 9/22)(E. Shaw)
3291.5	1105	222	CA	RRI Sibolga: hetting Milne Bay (Shaw 9/25)
3294	1350	432	CA	RRI Samarinda: Indo music (Cleveland 9/24)
3375	1115	243	CA	RRI Jambi: Qur'an, then mx (E. Shaw 9/25)(Cleveland)
3395	1140	243	CA	Unid Indo: "Love Ambon", nx relay, OM/YL songs w/YL host, Fak-Fak or Singaraya? (E. Shaw 10/9).....
3432.5	1210	243	CA	RPDK Kediri: heard 'Propinsi Jawa Timur' (Shaw 10/9)
3762	1150	243	CA	RKPKD Tuban: heard "Kabupaten Tuban" (Shaw 10/9), also w/local Indonesian mx @ 1345 by Cleveland on 10/1....
3960	1344	322	CA	RRI Padang: OM tlk, mx, ARO het (Cleveland 9/19)
3965	1338	311	CA	RRI Pontianak: Indo mx, CW, ARO QRM (Cleveland 9/19)
4380v	1355	432	CA	Unid: tlk of Indonesia (Cleveland 9/30) PLA here 10/4
4600	1440	---	CA	RKPKD Trenggalek: YL w/Indo mx (Shaw 9/25)
4719	1243	232	MN	RRI Ujung Pandang: Indo? tlk, mx (Miklejewski 9/20)
4764	1402	443	CA	RRI Medan: OM w/Jakarta nx (Birby 9/18)(E. Shaw 9/25)
4775	1355	332	CA	Jakarta w/Prog. Khusus: OM w/nx (Cleveland 9/29)(Shaw)
4805	1548	222	OR	RRI Jakarta: Indo w/local music (Jessen 10/11)
4855	1548	333	CA	RRI Palembang: Indo cmt, ute QRM (Shaw 10/3)
4885	1435	333	CA	RRI Bukittinggi: OM Indo tlk, Qur'an reading (Shaw 9/25)
4900	1600*	334	CA	RRI Gorontalo: Indo pgrm (Shaw 10/3)
4927	1532	343	OR	RRI Jambi: local & Islamic mx (Jessen 10/11)(E. Shaw)
4932	1258	343	TX	RRI Surakarta: 'Love Ambon', nx (Laves 10/5)(Jessen OR)
4955	1420	333	CA	RRI Banda Aceh: Islamic chants, 1430 ID (Shaw 9/25)

INDONESIA (continued)

5987 1359 433 CA RRI Manado: Indo w/ID, then nx (Cleveland 10/1)
 7058 1015 251 PA RRI Jakarta: tentative w/mx, tlk (Earhart 9/27)
 7110 *1000 444 CA RRI Yogyakarta: Nat. Anthem, // 5047 (Shaw 9/28)
 7139 0858 333 CA RRI Ambon: ads, provincial nx, mx (Shaw 9/28)
 11789 *1100 222 NY VOI: Eng nx, ID, local mx (Jernakoff 10/1)(Yajko PA)

IRAN

9022 2005 333 MA V. of Iran: Eng nx, mx (DeVries 9/9)(Wirrell 9/29)(Yajko)
 15084 1421 242 OH VOI: Farsi w/Persian mx (Lovett 9/21), and by S. Shaw
 CA @ 1511, Barber MAN @ 1205, Schwartz DE @ 1600.....

IRAQ

6155 1105 353 PA R. Baghdad(t): chants, Arabic mx (Earhart 9/13) Ken, it
 was 2:05 PM in Baghdad, more likely Singapore in Malay.
 9745 2020* 332 ENG RB: Eng w/ID (Cawthorne 9/26), and @ 1945 by DeVries MA,
 also heard here on several occasions, but irregular
 from 1700-1920 w/Arabic programming (Bodell OR).....

R. B. I.ISRAEL

6230 2305 --- OK IBA w/10 minute tone tests between 2305-0305 on 9/24-25
 only, // 7395, 9815, 12025, sometimes 11960, 9785 (Hauser)
 7395 2005 332 WI IBA: Eng nx (Zilmer), and by Miklejewski MN @ 2030
 9009 2051 343 PA IBA: Eng w/nx of the Mideast (Yajko 9/16)
 9815 2015 555 WI IBA: Eng w/nx, press (Talbot 10/1), and DeVries MA 10/2
 11642.5 2044 343 OR IBA: Eng nx, Soff (Hickman 10/11), and *2000-2050* by
 Zeigler MI, Schwartz DE, Rojewski WL, Hauser OK, Yajko.
 12080 2000 453 WI IBA: Hebrew Home Service, tlk, mx (Zilmer 9/28)(Hauser)
 15100 1205 233 PA IBA: Eng w/nx, ads, 1230*, into Fr pgrm (Hoffman 9/29),
 and by Jones MS, Earhart PA, Yajko PA, Zilmer WI.....
 15485 1225 434 PA IBA: Eng w/many ads (Yajko 9/21)
 17689 1215 232 JAPAN IBA: Eng w/ads, cmty, 1230 Fr. (Junqua 10/2)(Zilmer WI)

IBA=Israel Broadcasting Authority**RADIO JAPAN****NHK**JAPAN

3607 1145 343 CA NHK Hiroshima: YL/OM discussion (Shaw 9/25) Tokyo-Japan
 3910 1352 433 CA Far East Network: Eng w/pop stds (Cleveland 9/22)// 6155
 3925 1358 443 CA Nihon Short-wave Broadcasters: JJ mx, ID (Cleveland)
 5990 1305 434 CA R. Japan: Eng nx on the Royal visit (Naylor 10/10)
 6055 0920 454 CA NSB: JJ w/a play (Dawson 10/12)(Miller CA @ 1440)
 6130 1338 333 OR NHK Kumamoto: OM tlk in Japanese (Bodell 10/8)
 9505 0906 443 FL RJ: Eng/JJ nx, cmty (Smith 9/25)(Miller CA @ 1415)
 9585 1300 444 CT RJ: Eng/JJ w/IS, ID, nx, current affairs (Brooks 9/21),
 also by Miller OH, Miklejewski MN..Somalia 9585.5 hets
 9595 1540 444 WA NSB: Eng w/"Tokyo Forum" (Rojewski 9/26)(Cleveland CA)
 11705 1428 343 CA RJ: Eng/JJ annx, Bengali pgrm (Naylor 10/11)(Hickman)
 15105 0045* 333 WY RJ: Eng nx, JJ mx (Jolley 9/22), also by Lovett OH,
 Marti CA, Naylor CA, S. Shaw CA, Smith FL, White FL...
 15195 0120 545 CA RJ: Eng/JJ cmty, JJ lessons (Miller 9/5)(Schwartz DE)
 15270 0015 454 AZ RJ: Eng "mailbag" (Lance 10/12), also by Durant MD
 @ 0045*, Zeigler MI @ 2345, Wirrell MA, Wilson IL,
 15300 0030 333 NY RJ: Eng w/"Tokyo Calling", DX news (Jernakoff 10/3),
 Mercado CA, Durant, MD, Wirrell MA, Wilson IL.....
 15310 0105 343 PA RJ: Eng to Europe w/nx, financial tlk (Yajko 9/24)

JORDAN

9560 1700 322 MA HKBS: Eng w/ID, pop music (DeVries 9/19)

HKBS=Hashemite Kingdom Broadcasting ServiceKOREA, D. P. R.

2696.5 1243 333 OR Chongjin (per Szot) w/Korean mx, YL tlk (Bodell 10/8)
 2850 1340 443 CA KCBS: Korean tlk by YL (Cleveland 9/22)
 3015 1105 242 CA R. Pyongyang: JJ tlk (Snyder 9/20)(Cleveland)(Jessen OR)
 3320 1110 343 CA Unid Korean here (Shaw 9/25)
 3560 1347 322 CA R. Pyongyang: Eng tlk by OM to SEA (Cleveland 9/18)
 4700 1151 232 MS YL tlk in Oriental lang, DPRK or China? (Jones 10/4)
 6250 0931* 352 PA R. Pyongyang (t): choral sing. in U/lang (Earhart 9/28)
 6576 2050 333 ENG RP: YL talking in English (Cawthorne 9/28)
 9340 1005 443 CA RP: Eng cmty by YL, mx (Miller 10/5)
 9420 1049* 343 MA RP: Eng w/songs, IS anthem (Brooks 9/20), and Barber
 MAN @ 1230, White FL @ 1310, Jones MS, Smith FL, Zilmer
 9820 0730 344 CA RP: Eng cmty, Korean mx (Johnstone 9/28)(Zink 10/5)
 9977 1910 444 WA RP: Eng cmty by YL, Korean music (Rojewski 9/24)

D. P. R. K. (continued)

11533 1047 343 OH R. Pyongyang: Eng tlk, Korean mx (Miller 9/21)(Yajko PA)

REP. OF KOREA

2510 1340 222 OR R. Korea: U/lang tlk by OM (Jessen 10/10)
 2920 1305 222 JAPAN Unid, probably 2 x 1460, HLSH, Hamyang w/KK tlk by OM (Junqua 9/25).....
 6348 0935 322 MS V. of Hope: Korean? w/oriental mx, YL annx (Jones 10/7)
 9640 *0630 433 AZ RK: Eng w/times, freqs (Hansen 10/5), @ 0901 by Dawson CA, @ 1117 White FL, 1900 Rojewski WA, 1115 Miller OH
 11295 0900 333 CA Seoul: Eng w/nx, cmt, Korean mx (Johnstone 10/5)
 11850nf0650 322 CA RK: Eng w/"magazine" (Zink 9/28)(Snyder @ 1456 9/20)

Korean Broadcasting System

KUWAIT

9555 1650 333 OR R. Kuwait: Urdu svce, 1700 Eng, //11940 (Bodell 10/15)
 9650 0400 312 AZ RK: Arabic mx, chanting, singing (MacCoy 10/8)
 11940 1730 222 PA RK: Eng nx, wx, pop mx pgrm (Hoffman 9/19), also in Eng by Schwartz DE, Miklejewski MN, Yajko PA.....

QSL

LAOS

4500 1355 211 CA United Lao Races (t); OM tlk in U/lang, under VNG(Bixby)

LEBANON

9545nf 0255 343 AZ R. Lebanon: Eng w/pop music, YL annx, announcing freq still as 9675 and *0130 rather than *0230 (Hansen 9/29)

Radio Liban

MALAYSIA

Baycoath

3915 1402 433 CA BBC Tebrau: Burmese w/tlk by YL (Cleveland 9/22)
 6100 *1345 232 OR BBC w/IS, Mideast mx, Kuala, Russ mix (Bodell 10/6)hmm?
 7100 *1345 131 CA BBC, another Tebrau?, Chinese pgrm (Snyder 9/20)
 7160 1408 433 CA R. Malaysia: Eng nx by OM, mx (Mercado 9/6)
 9665 1702* 333 OR RM: on late w/Islamic mx in pgrm for Ramadan (Bodell)
 9740 1105 344 FL BBC Tebrau: Eng in World Service (Bodell 9/25)
 11750 1453 444 CA BBC: Eng WS (Naylor ??)(Rojewski WA)(Miller OH)
 11950 1608 333 CA BBC Tebrau: Eng nx, Saturday pgrm, unlisted (Naylor)

MONGOLIA

4085 1352 343 CA Ulan Bator R: tent. w/OM tlk in U/lang (Bixby 9/25)??
 6383 1130 333 JAPAN UBR: Mongol. w/Moscow relay, // 4762.5, 5054, and Moscow on 9590, 1200 UBR's HS 2, w/mx, tlk, 1210 S/off w/anthem (Junqua 10/2) Snyder says they don't QSL Moscow



NEPAL

3425 1347 311 CA R. Nepal: local mx, 1350 nx, QRM (Cleveland 10/10)
 5007 1340 333 CA RN: Nepali tlk by OM, back on this freq (Bixby 9/17)

PAKISTAN

3405nf*1657 333 JAPAN R=Rawalpindi K=Karachi I=Islamabad
 R. Pakistan: IS, Eng S/on, nx, mx request pgrm, also heard in Urdu between 1510 and 1647 (Junqua 9/27) (R)
 7085 2105 444 FL RP: Eng nx, cmt, (White 10/9), and by Earhart PA on 9/27, Cawthorne ENG 9/27.....(K).....
 9460 1305 422 AZ RP: Eng w/nx (Hansen 9/19), Enx @ 2130 by DeVries MA, @ 1257 White FL, and in Urdu @ 1230 by Barber MAN.(K).
 15520 1530 343 PA RP: slo speed Eng nx, 1545* (Hoffman 9/19) (I)
 17830 1910 333 IL RP: Urdu w/local, pop mx (Jacobson 9/21) (I)

RADIO PAKISTAN

PHILIPPINES

2653 1224 333 OK DXCR (2 x 1326.5): YL in local lang, mor mx, 1226 ID, TCs, "Voice of...", relig pgrm (Hauser 10/11+), also by Jessen OR w/1400*, annx, Bixby CA on 9/18.....
 7225 1330 333 NM FEBC: relig. mx, Japanese tlk (Thompson 9/20)
 9545 2305 --- OK VOA: 500Kw in Eng, mix w/DW in Spanish (Hauser 9/7)
 9580 1450 444 CA V. of Philippines: Eng w/mailbag, mx (Miller 9/27), also by Johnstone CA @ 0920, Hansen AZ @ 1515, Smith FL @ 0923, Rojewski WA @ 1530, Jones MS @ 0849.....
 11855 0930 444 CA FEBC: Eng w/religious programme (Johnstone 10/4).
 11910 0020 343 CA R. Veritas: tests in Eng (Shaw 10/9)(1502* Junqua)
 15290 0000 333 CA VOA, Tinang: Eng w/nx (Mercado 9/14)(Hickman OR 10/12)
 15440 2330 433 NC FEBC: Eng w/local, World nx, political tlk, religious pgrm (Patterson 9/24)(White FL)(Yajko PA)(Zilmer WI)

VOP

RYUKYU ISLANDS

7165 1128 343 FL VOA Okinawa: Eng pgrm, mx (White 9/4)(Earhart 9/23)

SABAH

4970 1355 322 CA RMS: B. Malaysia w/mx (Cleveland 10/2)(Jessen OR 10/11)

SARAWAK

4835 1519 343 OR RMS Kuching: Bahasa Malaysia w/local mx (Jessen 10/1)
4895 1402 433 CA RMS Kuching: Iban (WRTH) w/nx by YL (Cleveland 10/2)
4950 1355 422 CA Kuching: Eng w/pop, C&W mx (Cleveland 9/23)(Jessen 10/11)
5030 1310 333 MN Kuching: Bidayah tlk, Islamic mx (Miklejewski)(Snyder)
6050 1450 433 OR RMS Sibui: B. Malaysia w/YL singing (Cleveland 10/12)
7145 0935 344 CA RMS Kuching: Yellow Network w/local mx (Shaw 9/28)
7165 0935 344 CA Kuching: Chinese w/pop mx in Red Network (Shaw 9/28)

SAUDI ARABIA

6145(t)2124 333 CT BKSA=Broadcasting Service of the Kingdom Of Saudi Arabia
11865 1655 232 CA BKSA: Arabic mx, OM/YL tlk, tent ID @ 2130 (Brooks 9/24)
CA BKSA: Qur'an, "Riyadh" ID 1700+ (Snyder 9/21)(Bodell)

SINGAPORE

5052 1405 433 CA R. Singapore: Eng w/"comedy" pgrm (Cleveland 9/19)
11940 1552 333 CA RS: lite mx, "Soothing Sounds", 1607 ID (Naylor 10/11)

SRI LANKA

3395nf 1615 222 JAPAN SLBC=Sri Lanka Broadcasting Corporation
9720 1925 222 MN SLBC: ch. 1 in Sinhala w/Oriental mx (Junqua 9/27)
11800 *1900 343 NY SLBC: Eng w/nx, sports to Europe (Miklejewski 9/28)
15120 1915 232 ENG SLBC: Eng w/pop mx, nx (Jernakoff 10/2)(Miklejewski MN)
15120 1915 232 ENG SLBC: Eng nx (Cawthorne 9/25)(Lovett OH 9/21)

TAIWAN

3230 1450 232 CA BCC=Broadcasting Corporation of China
7185 1150 352 PA BCC: Chinese tlk by YL, march mx (Cleveland)(Jessen OR)
15125 0205 242 FL BCC (t): Chinese type tlk, mx, anthem? (Earhart 9/23)
15345 0210 354 CA V. of Free China: Eng nx, Chi mx, // 17720, 17890(White)
17890 0205 343 CA VOFC: Eng nx, mx, IS, ID (Marti 9/29)(Thompson NM 9/24)
NM VOFC: Eng w/orch. mx, nx, Mandarin songs (Thompson 9/20)

THAILAND

4830 1540 333 CA RT: Thai w/Bell mx, chants, // 6070 (Ed Shaw 10/3)

TURKEY

9515 2300 454 MA VOT: Eng nx, DX pgrm, Turkish mx (Wirrell 9/24), also heard by DeVries MA, Earhart PA, Zilmer WI, Yajko PA, Miklejewski MN, and @ 0500 in Turkish by Jacobson IL.
11880 0000 444 WA VOT: Eng in // by Rojewski 9/30, Yajko PA, and @ 1604 w/the Qur'an by Hickman OR, Turkish by Snyder, Miller

UNION OF SOVIET SOCIALIST REPUBLICS

Armenian SSR

7275 *0559 333 OR Yerevan w/Armenian tlk, mx 0629* (Hickman 10/2)

Asiatic RSFSR

4040 1339 422 CA R. Moscow via Magadan?: Russ w/classics (Cleveland 9/23)
4520 0610 233 OR Palana: local in Russ w/OM & YL tlk (Jessen 10/11)
4613,4 1100 444 CA RM via Khabarovsk: off 4610, RR nx, annx (Shaw 10/9)
4820 1514 222 OR RM via Khanty-Manslysk: Russian songs (Jessen 10/11)
5015 1145 323 MN RM via Vladivostok: Russ w/class mx (Miklejewski 9/27), also by Birby CA w/pop mx, Jessen OR, Cleveland CA....
6035 1239 433 MS RM via Khabarovsk: U.S. mx, // 6080 (Jones 10/4)
6100 1050 232 MS RM?: Russian mx, Chinese? tlk by YL (Jones 9/18)
7100 0242 545 MA RM: Eng w/local nx, mx (Wirrell 9/22) Euro. site?, reb
9675 1420 231 CA R. ST. Peace & Progress: Eng tlk by OM (Snyder 9/20)
9710 0705 443 CA RM: Eng nx, cmty, letters (W. Miller 10/1) site unk.
12020 *1400 222 JAPAN Radiostansiya Rodina: organ IS, IDs, Russian tlk, mx, 'UN' jammer, also on 17775 (Junqua 9/20).....
12240 0025 232 OR RM Magadan: long tlk by OM in Russian (Jessen 10/12)
15210 0000 544 CA RM: Eng w/nx, mailbag (Mercado 9/30)
15490 *1530 444 CA RM: Mayak S/on in Russian (Snyder 9/20) Euro site?, reb.
15505 0130 333 NM RM via Sverdlovsk: Eng nx, cmty, folk mx (Thompson)

Azerbaijan SSR

9840 0326 323 FL Baku: re Moscow in RR from 0300 (White 9/20), local w/ Azerbaijani mx @ 0204, and re RM @ 1715 (Bodell 10/19)

Uzbek SSR

11925 *1400 343 CA R. Tashkent: Eng w/IS, nx, // 11730 (Bixby)(Miklejewski)

VIETNAM

6450 1320 343 JAPAN V. of Vietnam(UADX): Viet tlk by YL, mx (Junqua 10/1)
 10040 1618 333 CA VOV: Viet? w/nx (S. Shaw 9/25), Span @ 1120 White FL, and Miklejewski MN on 9/26, Fren @ 1340 Cleveland CA..
 10058v 1290 322 MAN VOV: Viet tlk, mx (Barber 9/26)(Cleveland CA 10/3)
 15012 1205 343 FL VOV: Viet tlk, mx, 1257* (White 9/24)(@ 1200 Barber MAN)

YEMEN ARAB REPUBLIC

5805 0309 343 FL R. Sana': Qur'an reading by OM, then AA tlk (White 9/2)
 7300 *0300 343 OR RS: brief Arabic tlk by OM, then Qur'an, irreg(Bodell)

PEOPLE'S DEMOCRATIC REPUBLIC OF YEMEN

7190 2230* 333 MAN Aden on late w/ID, National Anthem (Barber 9/23), also @ 0300 w/Qur'an, Arabic mx (Bodell OR daily).....
 11770 1435 232 CA Aden w/Qur'an, Arabic tlk, time pips @ 1505 (Snyder CA), also strong many days, occas mix w/BBC ar 1800 (Bodell)
 11802 2230+ 122 CA Aden (t) Arabic tlk, seemed // 11770 (E. Shaw 10/1)



OCEANIA



AUSTRALIA

4920 1110 333 PA ABC Brisbane: Eng nx (Yajko 9/21)(Miklejewski MN)
 5995 1045 444 OH R. Australia: Eng w/Top 40 mx, // 6005 (leamy 10/8), also @ 0800 Talbot WI, @ 1020 Earhart PA, Yajko PA....
 6005 1012 453 MS RA: Eng to the Pacific (Jones 9/30)(@ 1245 Zilmer WI)
 6090 1159 352 PA ABC Sydney: Eng w/1200 ID, pop music (Earhart 9/10),
 6140 1400 332 CA ABC Perth: Eng w/mx (Cleveland 9/19) and Yajko PA
 6150 1200 312 MA ABC Melbourne (t): Eng tlk (DeVries 9/10)(Cleveland CA)
 7220 1147 333 FL RA: Eng nx, cmty to PNG: (Smith 9/22)(@ 1250 Yajko PA)
 7280 1216 433 FL RA: Indo mx, ID, tlk (Smith 9/22) listed as 7290, reb.
 7290 1215 354 MN RA: Chinese w/Chinese mx, IDs by YL (Miklejewski 9/18)
 9570 0730 333 ENG RA: Eng w/'Focus on Australia' (Cawthorne 9/29), and by Jacobson IL, Smith FL, Yajko PA.....
 9580 1130 444 IL RA: Eng w/nx (Wilson 9/30), @ 1150 by Durant MD, @ 1205 by DeVries MA, and @ 1218 by W. Miller CA.....
 9600 1400 232 OH RA: TCs, IS, Thai S/on (Miller)&(1155 Indo Earhart PA)
 9610 0400! 323 WI ABC Perth: Eng nx, science pgmr (Talbot 9/21), 1500 by Rojewski WA, Wilson IL, DeVries MA, Yajko PA, Schwartz
 9680 1505* 333 OR ABC Melbourne: Eng S/off (Hickman 10/9)(Miklejewski MN)
 9770 1047 343 MN RA: Eng mx pgmr (Miklejewski 10/3)(DeVries MA)(Yajko)
 9790 1000 433 GA RA: Eng "Countdown Show" (Bernstein 9/13) listed 9770
 11740 0848 342 PA RA: Indo pgmr (Earhart PA), 1005 Eng (Smith 9/5)
 11825 0800 343 FL HA: Eng w/R & R, World nx, stocks (Smith 9/18)
 11870 1540 343 CA RA: Eng w/tlk on windmills for energy (Naylor 10/11)
 15140 0315 354 CA RA: Eng w/Top 40 mx (Martí 9/21)
 15150 0240 322 CA RA: Eng news (S. Shaw 10/4)
 15290 0418 222 CA RA: Eng w/nx, mx (Benjamin 10/6)
 15320 0250 323 CA RA: Eng w/nx (S. Shaw 10/4)
 15425 0707 --- CA ABC Perth: Eng w/pop mx, wx (Zink 9/28)
 17795 0130 434 IL RA: Eng nx, "World of Music" (Jacobson 9/16)

RADIO AUSTRALIA



NEW CALEDONIA

7170 0720 343 OR R. Noumea: Eng lessons for schools w/Fren annx(Bodell), heard in Fren by Laves TX, Yajko PA, Earhart PA, Hickman OR, Cleveland CA, Miklejewski MN @ 1100*.....
 // 11710 NOUMEA

NEW HEBRIDES

3945 0800 333 CA R. Vila: Eng to 0800 then French w/lilting organ mx, variety show, island mx (E. Shaw 10/6+) easy QSL-hi!

NEW ZEALAND

6105 0645 333 CA RNZ: Eng w/sports nx, mx (miller 10/9)(@0818 Yajko PA)
9520 1045 343 WI RNZ: Eng w/mx, World nx (Zilmer 9/19)(@ 0905 Yajko PA)
9540 0730 353 PA RNZ: Eng w/ballads (Earhart 9/20)(Wilson IL)(Yajko PA)
15110 0415 222 AZ RNZ: Eng w/NZ nx, wx (MacCoy 10/3), and by S. Shaw CA,
Benjamin CA, Wilson, Jacobson IL, Rojewski WA.....
15280 0246 333 CA RNZ: Eng w/classic mx (S. Shaw 10/4)(@ 0246 Yajko PA)

PAPUA NEW GUINEA

3290 1118 242 OH R. Central District: Pidgin annx, hymns (Miller 9/14)
3305 1212 332 TX R. Western Dist: Pidgin w/relig. svce, mx (Laves 9/11)
3322 1130 232 OH R. Bougainville: Pidgin w/uke, tlk, chorus (Miller 9/14)
3385 1211 222 TX R. E. New Britain: OM yelling (Laves)(in Eng Zilmer WI)
3904.5 0830+ 434 CA R. Manus: Eng/Pidgin tlk, mx, to past 1200 (Shaw daily)
4890 1355 --- OK NBC Port Moresby: independence ceremonies w/Big Ben,
GSTQ, National Anthem, speeches, festivities (Hauser
9/15), Eng pgrms by Schwartz DE, Earhart PA, Thompson NM

SOLOMON ISLANDS

5020 1043 222 MS SIIBS: Eng pops, RA nx @ 1100 (Jones 10/)(Jessen OR)

TAHITI

11825 0445 444 WA Radio-Tele-Tahiti: Tahitian w/ID, mx (Rojewski 9/16),
and in Fren. @ 0515 by Jacobson IL, Hickman OR.....
15170 0307 343 CA RT: Tahitian w/ pop mx, // 11825 (S. Shaw)(Naylor 10/11)

UNIDENTIFIED STATIONS

3000 0944 232 OR OM tlk in U/lang (Jessen 9/24) Chinese heard here, reb.
3035 1345 353 CA OM tlk to crowd in U/lang (Bixby 9/26) Korean?, reb.
3385 1449 433 JAPAN Unid Russian w/YL, jazz mx, ute QRM (Junqua 10/7)
4675 1030 --- CA Unid, possibly Indo w/OM hosting pop mx (Shaw 10/9)
4841.7 0955 --- CA Unid, YL w/operatic mx, not Chinese (Shaw 9/24)
6095 2315 332 CT Arabic w/mx, tlk, instrumental mx (Brooks 9/24) Iraq?
7135 1420 232 OR Islamic mx for Ramadan, U/lang tlk (Bodell 10/6) Pak?
7400 0230 232 OH OM/YL in Asian lang, march mx (Lovett 9/24) Moscow?

----- D A T E L I N E -----

BOUGAINVILLE-The Papua New Guinea government in Port Moresby closed down and has taken over control of the Provincial government on Bougainville. On 20 Oct. a march involving 3000 "Republic of North Solomons" secessionists, including the former Provincial Premier, protested on government grounds in Sohano. The PNG flag was burned; several other marches were held throughout Bougainville - - - NBC, Port Moresby, 10/20 - - - RA news 10/22 reported that the secessionists are willing to give the PNG government a share in the Bougainville copper revenues in return for granting Bougainville independence - - -

INDONESIA-Ed Shaw sent in a survey of Indo stations carrying the Jakarta news relay, 1600-15 on 10/3; RRI Medan 4764, RPD Jakarta 4775, RRI Jakarta 4805, Bukittinggi 4805, Jambi 4927, Surakarta 4932, Banda Aceh 4955 - -Thanx Ed - -

CLANDESTINE/DPRK-The Voice of the Revolutionary Reunification for Korea sked 1s: in Korean 0300-0530, 1000-1600, 2300-2330 on 4551.5, 1000-1410 on 4115, English 1s at 0530-0600 and 2300-2330 on 4551.5 (Kouji Yamada, Tokyo, Japan)

LAOS-Michael Willis, Victoria, Australia reports on 2 stations in Laos, both of which relay Pathet Lao and have their own regional programmes. A new station on 6652 is heard 1100-1346*. Another station is heard on 6987, 1100-1400*

MONGOLIA-Michael also reports that UBR is now on 7300, ex-7237, Chinese 1300, Mongolian 1330-1400*, also testing on 7262, 0850-0900 (the last 3 items forwarded by Glenn Hauser from his LISTENER'S NOTEBOOK, Oct FRENDX of NASWA) - -

TURKEY-RSA is the latest broadcaster to land on a VOT frequency, moving to 9515, ex-9525 @ 2230 S/on in Eng to NA-let's see RNE, VOA, now RSA hmmm! reb.

PORTLAND-here we are again, and with an extra page to give us a little breathing room. In months to come we'll expand coverage of late DX news and programme info, with your assistance. This month thanks to to 52 contributors with hearty welcomes to Lance Barber, Roger Bernstein, Cedric Cawthorne, Linda DeVries, Peter Jernakoff, Jerry Jolley, Marvin Kummer, Brandon Lovett, and Spencer Naylor. Welcome returns to Ed Shaw, and George Hansen. - - - - -

*****A/O KWICKIE KWIZ*****A/O KWICKIE KWIZ*****A/O KWICKIE KWIZ*****
The response to last months KWIZ question was underwhelming (h1). QSL ed Bill Cleveland did come in with the correct answer tho, which was the island of Bali. Let's try again? In this country you will be able to hear Chinese on the local station, since 75% of the people are Chinese. Yet the country is located over 2500 kilometres from the China coast. What country is it?

73 and Aloha, *Bl* 10/21/75

**WORLD SERVICE
PROGRAMMI**

STATION SKEDS

EMISSIONS

**TRASMISSIONI
PROGRAMS
SERVIZIO**

BULLETIN DE PROGRAMMES

ENGLISH SERVICE

PROGRAMME SCHEDULE

Editor:

MEL HICKMAN
7409 S.E. 82nd
PORTLAND, OR 97266

Deadline: 15th

COMUNICATI NEL CORSO

WINTER ENGLISH SCHEDULES TO NORTH AMERICA

COUNTRY	STATION	TIMES (GMT)	FREQUENCIES	REPORTERS
Australia	R. Australia	0100-0300 1115-1245	15320 (Shep 100kw), 17795 (Shep 50kw) 9580 (Shep 50kw)	Bodell
Austria	ORF	0130-0200 0330-0400 0430-0500	6155, 9770 6155, 9770 6015	Johnson
Belgium	RTB-BRT	0040-0100 2215-2315	6080, 9730 9755, 11855	Harding, Wood
Canada	RCI	0100-0157 0400-0600 1115-1215 2300-0100	6085, 9650, 11940 6135, 9655 5970, 9655, 11825 M-F 6085	Benjamin, Wilson, Lance Brick, Thompson, Caliri
China, P. R.	R. Peking	0000-0100 0100-0200 0200-0300 0300-0400 0300-0500 1200-1300	9940, 11675, 11945, 15060 7060, 7120T, 9780T, 9940, 11675, 11945, 12055, 15060 7060, 9940, 11675, 12055, 15060 7120T, 9780T 9460, 11650, 12055, 15060 11685	Brick, Kubinsky McIntosh Wood
Czechoslovakia	R. Prague	0100-0157 0300-0357	5930, 7345, 9540, 9630, 9740, 11990 Same as above.	Thompson
Ecuador	HCJB	0100-0500 0500-0700 1215-1230 1230-1630	5970, 9560, 11915 5970, 9560 11745 11745, 15115	Brick, Wood
Finland	R. Finland	0300-0330 1400-1430	9720 11755, 15185	Zelasko, Johnson Harding, Wilson
Ghana	R. Ghana	2000-2100	11850	Cleveland, Talbot
Great Britain	BBC	1100-1200 1200-1330 1500-1615 1700-1830 2115-2200 2200-2300 2300-0030 0030-0315 0315-0330 0330-0415	15070 5990 Sackville, 15070 17840 Ascension 15365 Sackville 5975, 15260 Ascension 5975, 7325, 15260 Ascension 5975, 6175 Sackville, 7325, 9510 Sackville, 9580 Ascension, 15260 Ascension Same as above except 9510 from Greenville Same as above except delete 15260 5975, 6175 Sackville	Wood
Israel	IBA	0500-0515 1200-1230 2000-2055	5900, 7395, 9009, 9815, 17685 Marti, Thompson 11642.5, 12025, 15100, 15485 Bernstein, Levin 7395, 9009, 9815, 11642.5, 15240	
Japan	R. Japan	0130-0230 2345-0045	15195, 15420, 17725, 17825 11705, 15270	Bodell, Zelasko Wood
Poland	Polskie R.	0200-0230 0300-0335	6095, 6135, 7270, 9675, 11815, 11840, 15120 Same as above.	Talbot, Pimblett, Zelasko, Bixby, Bowen
Romania	R. Bucharest	0130-0230 0400-0430	5990, 6155, 6190, 9570, 9690, 11775, 11940 Same as above.	Bernstein
South Africa	R. RSA	2226-2320	5980, 9515, 9585, 11900	Wood, Bernstein
Sweden	R. Sweden	0230-0300 1230-1300 1400-1430 2300-2330	6045, 9695 9605, 15305, 21690 9765, 11735, 15305 6035, 6045, 9605	Wood
Switzerland	SBC	0145-0215 0430-0500	5965, 6135, 6175, 9725 6045, 6175, 9725	Bodell, Wood
Vatican State	Vatican R.	0100-0115	5995, 6165, 9605	Bernstein

MY SPECIAL THANKS TO THOSE WHO VOTED FOR ME IN THE BOD RACE AND CONGRATS TO THE NEW BOD.

BRAZIL: Radio Nacional de Brasilia has adjusted its 19 meter frequency to 15240 for the 1900-2300 transmissions in Portuguese, German, and English. (Wood, Bixby, and Brooks)

COSTA RICA: Aqui Costa Rica is a Eng/Spain program at 0600-0700 Sundays carried by R. Capital on 4832 and R. Relej on 6006. (Wood)

ECUADOR: Other HCJB Eng beams include:
0500-0700 Pac 11915
0700-0830 Pac 9745, 11915
0715-0830 Eur 6130, 9760
0830-1045 Pac 6130, 9745
1230-1630 SA 15160
1730-1800 Eur 15315, 17730
(Wood, Brick)

ETHIOPIA: ETLF has Eng transmissions at:
0410-0425 EAFr 7165
0530-0610 WAFr 11890
1255-1325 Sri Lanka 15320
1330-1345 India 11900, 15190
1655-1710 Ethi 6065
1755-1810 EAFr 9705
1830-1910 SAfr 7145
1930-2015 WAFr 11890 (Wirrell, Erick)

INDIA: The last AIR schedule shows these English beams:
1000-1100 NEA 11725, 15190, 17387
1000-1100 NZ-Aus 11775, 15205, 17775
1330-1500 SEA 11810, 15335
1745-1945 EAFr 9575, 15080
1745-2230 Eur 7150, 9525, 11620
1945-2045 W/NAfr 9755, 11880
1945-2230 Eur 9912
2045-2230 NZ-Aus 7215, 9912, 11740
2345-0115 E/SEA 3905, 7215, 9540, 11710
2345-0115 NEA 9875, 11825, 15280 (AIR)

ISRAEL: IBA lists these frequencies for its H.S. sked in Hebrew, Eng, French, and Arabic:
0400-0600 7412.5, 9400, 12080
0600-1845 12080, 15512.5
1900-2000 9400, 12045
2000-2305 7412.5, 9400, 12045.
A full sked is broadcast in English Thursdays during the N.A. beam. (Bernstein)

MALTA: R. Malta has an English beam at 2045-2100 on 9755. This is followed by IBRA Eng programs. (Wood)

MARTINIQUE: Jack Jones forwards this sked for Fort-de-France:
1000-1200 3315 4 kw
1200-2300 5995 4 kw
1200-0230 1310 50 kw
2300-0230 3315 4 kw
Jack notes the 4895 freq was scratched out.

MEXICO: XERMX, R. Mexico, is scheduled in Sp from 1315 until 0305 (exc Sun 0505*) on 5980, 9705, 15125, and 15385. (Bixby)

NEW ZEALAND: RNZ has this winter sked for English transmissions:
0600-0845 Pac 6080, 9540
0900-1145 Aust 9520, 11780
1700-1945 Pac 6080, 9755
2000-2230 Aust 11900
2000-0545 Pac 15110
2245-0545 Aust 15280

NEW ZEALAND (CONTINUED): The Sunday beam to Antarctica is 0015-0200 on 11705. (Ya, jko, Talbot)

SEYCHELLES: FEBA has this current Eng sked - 0600 (Su, Sa), 0630 (M-F) -0830 25m, 19m 1530-1645 25m, 19m
Possible frequencies include 11715, 11740, 11785, 11810, 11865, 15160, and 15325. (Rojewski)

SOUTH AFRICA: From Johnson and Talbot come these domestic service schedules:
Afrikaans - English -
0558-0721 3955, 4875 0558-0720 3965, 4835
0721-0836 4875, 9560 0720-0835 4835, 9680
0836-1721 9560, 11885 0835-1720 9680, 11790
1721-1821 4875, 9560 1720-1820 4835, 9680
1821-S/Off 3955, 4875 1820-S/Off 3965, 4835
Springbok - RSA -
0500-0722 3980, 4810 C000-0500 (Sun 0600*)
0722-0837 4810, 9710 3250, 3980
0837-1722 9710, 11935 Market Reports -
1722-1822 4810, 9710 1805-1850 3230, 5980
1822-S/Off 3980, 4810

TOGO: Those of you who are tired of hearing Togblekope on 5047 should try for Lama-Kara on 6155 around 0430-0500. (Wood)

TURKEY: The latest sked from TRT lists these short wave programs:
9515 - Turkish 0400-1330 and 1630-2200, English 2200-0030.
11880 - Turkish 0400-1330 and 1630-2100, Arabic 1330-1430, Romanian 1430-1500, Greek 1500-1530, Bulgarian 1530-1600, Serbo-Croat 1600-1630, German 2100-2130, French 2130-2200, English 2200-0030

UNITED NATIONS: UN Radio lists the following English news and information programs -
0230-0245 Tu-Sa 1515F, 15270DE, 17750TI, 17850DE
0500-0505 Tu-Sa 6055G, 9530G
0545-0600 Tu-Sa 6055G, 9530G
0630-0635 Tu-Sa 9530TA, 11770TA
0707-0715 Tu-Sa 6055G, 9520TA
0745-0755 Tu-Sa 6055G, 9520G, 17860M, 21550M
0845-0900 Tu-Sa 5955DI, 9555DI
1000-1005 Tu-Sa 6150DI, 9660DE, 11930TI
1800-1805 M-F 15150TA, 15410G, 21670G
1830-1835 M-F 15140TA, 15410G, 18275G USB
DE - Delano, DI - Dixon, G - Greenville, P - Porro, TA - Tangier, TI - Tinang. (Jacobson)

VIETNAM, D. R.: VOV sends Rojewski this schedule of services:
English at 0100, 1000, 1300, and 1600 on 10040 and 12035; and at 1800 on 10040 and 15012.
French at 0230, 0430, and 1330 on 10040 and 12035; and at 2100 on 10040 and 15012.
Spanish at 0200, 0300, and 1100 on 10040 and 12035.
Japanese at 1200, 1500, and 2200 on 10040 and 15012.

YUGOSLAVIA: Radio Beograd has English beams at these times: (according to Mr. Brooks)
1530-1600 - 9620, 11735, 15240
1830-1900, 2000-2030 - 6100, 7240, 9620
2200-2215 - 1268, 6100, 7240, 9620

UTILITY REPORT



Editor:

KEN COMPTON
7 MOUNT VERNON STREET
BRIGHTON, MA 02135

Deadline: 15th of the month

The loss of Steve Handler, who has been with the ute sections of SPEEDX since its beginning, will be deeply felt. We hope you will continue to be a prolific contributor to the "Utility Report", Steve, and the very best of luck with your future endeavors!

QSLs

ALASKA: USCGAS Annette, 5696, PFC & ltr stating mine the first SWL reception rpt they've rec'd, also photos & map. 10d surface for MS. VS: Thomas E. Bates, RM2. (Chabak-CO)

ARGENTINA: LPD86, Gen. Pacheco R., 8646, f/d PFC & pc in 166d surface for SS rpt & 2 IRCs. VS: Ignacia Irureta. (MacLennan-ONT)

AUSTRALIA: VNV30 AOTC Sydney(?), 7980, Usual AOTC cd in 57d for 1 IRC & rpt of "Antarctic Bases Composite" vm. (Holbrook-MD)

VNG, Lyndhurst, 7500, folded antenna cd in 31d air for no RP. (DeVries-MA) 12000, same cd in 26d air for no rp. (Smith-FL)

VHP, Aussie Navy, Canberra, 8478, PFC, personal ltr, & Navy photo folder in 33d air for 3 IRCs. (Walters-NJ)

VIS, OTC Sydney, 12952.5, Earth Sta cd f/d less time, in 26d air. Sent one IRC w/EE rpt. (Walters-NJ)

VIX, Aussie Navy, Canberra, 8478, same cd as VHP in 20d air. (Walters)

VII, Thursday Island R., 6502, f/d cd in 1m surface for EE rpt (RP?-Ed.) (Koizumi-JAPAN) Nice going, Mr. K.!

VIP3 Perth, 8597, no data "verification" cd in 1m surface for SAE & 2 IRCs. (Next time I'll send a PFC.) (French-MD)

BAHAMAS: Marsh Harbour Beacon, Bahamas Telecom Corp., 361 khz, f/d veri form for EE rpt & 1 IRC, 100 watts. (Holbrook-MD)

BARBADOS: 8PO, C&W St. Philip, f/d folder map cd 15d air, 2 IRCs. (MacLennan-ONT)

BELGIUM: 8789.6 & 8805.6, Oostende R. sent f/d b&w OST-OSU cd in 7wks for FF rpt & 2 IRCs (MacLennan-ONT) 8802 Same in 90d surf. (Vogel-PA)

CAMEROON: TJF90, INTEL CAM, Douala, 9045, FF ltr w/date & veri statement only in 19d air for FF rpt & ms, PFC not returned. (Walters-NJ)

CENTRAL AFRICAN REPUBLIC: TLZ93, Bangui, 9308, returned PFC w/all data in 46d for EE rpt & 2 IRCs. (Holbrook-MD)

CANADA: CHU, Ottawa 3330, Sir Sanford Fleming cd in 7d air for no rp. (DeVries-MA)

VAI, Vancouver Marine Aeradio, 8722, PFC & pers ltr in 20d air for ms. (Walters-NJ)

LOM beacon "L", Toronto, 368, returned PFC in 12d air for ms & SAE. VS: D. E. Burry. MS & SAE used. (French-MD)

GFH Halifax 9890 RTTY & 9890 FAX, sent info on how to improve reception, and sample wx map for 2 IRCs & photo of my shack, 2 wks. (Scott-FL)

CANAL ZONE: WHZ70, SA+CS IFSS Telfers Is., 9796, PFC in 8d air for ms & SAE (used). (French-MD)

COLOMBIA: Cali Aeradio, 6666, rtrnd PFC w/all data for SS rpt & 2 IRC in 13d air, VS: Pedro Gamboa S. 1kw. (French-MD)

DAHOMY: TYK8 FCR Contonou, 10895, PFC completed & returned in 23 d air for ms & FF rpt. (Walters-NJ)

GHANA: 9GN24 ETS Accra, 15920, f/d mimeo form ltr in 17d air for EE rpt & 3 IRCs which were returned! (Walters-NJ)

GIBRALTAR: GYU Royal Navy, 6371, PFC w/date & time marked "continuous" in 24d air for EE rpt & 2 IRCs. (Walters-NJ)

GERMANY, W.: DHJ59 Ger. Navy Wilhelmshaven, 8648, f/d PFC but power & art data marked CLASSIFIED, in 15d air for EE rpt & 2 IRCs. (Walters-NJ)

GUANTANAMO: NAW26 AAC&R, 7430, f/d b&w map cd for ms in 23d air (Walters-NJ) PFC & no data ack cd in 12d for SASE (used). (French-MD)

HAWAII: WWVH Kauai, 10000, green Aloha cd in 10d air for no RP (DeVries)

HOLLAND: PCK93 PTT Kootwijk, 13809, blue&white antenna cd in 45d air. 30 kw. (Holbrook-MD) Did you send return postage, Hank?-Ed.

ICELAND: TFA, PTT Gufunes, 12175 7-scene color photo cd in 5 wks surface for EE rpt & 2 IRCs. VS: Krispin Dorvaldoddir. (Vecchiola-PA) same in 28d air (Holbrook-MD) same in 17d air (MacLennan-ONT)

IRELAND: Shannon Aeradio. 2889, new 4p. QSL booklet f/d, photos & full sked. (Wirrell-MA)

ITALY: IRH58 ITALCABLE Rome-Tervainica, 10815, fine map cd in 2m&16d, no RP. 10kw. (Holbrook-MD)

MALI: TZB910 Bamako TIM, 10694, PFC returned in 19d air for FF rpt & 2 IRCs. 35kw. VS: illegible. (French-MD)

MAURITIUS: GZC Royal Navy, Vacoas, 8726, f/d b&w cd, 42d air for 2 IRCs. (MacLennan-ONT)

MEXICO: KDD229 PTT Mexico City, 10565, f/d registered SS ltr in 25d air for SS rpt & ms. (Walters-NJ)

SENEGAL: 6VZ, GATE R. Dakar, 5696. PFC f/d in 364d air via USCG Cutter "Vigilant" (Postmarked Boston!) for EE rpt & ms. 1kw. VS: A. F. Durkee, GATE Communications Officer. (Chabak-CO)

NETHERLANDS ANTILLES: PJY6 PTT Aruba, 16350, glossy white-yellow-blue cd in 25 mos. air for 1 IRC & EE rpt. (Kay & Frank Testa-MA)
PJC, Willemstad, Curacao, 4334, f/d coat-of-arms cd in 109d air for EE rpt & ms. VS: illegible. (Walters-NJ)

NEW CALEDONIA: FJJP8 PTT Noumea, 8698, f/d QSL (card or ltr, Mr. K.?) in 4 months air for FF rpt & 1 IRC. (Koizumi-JAPAN)

NORWAY: LFN Rogaland R. Ganddal, 8527, f/d PFC in 12d air for EE rpt & 2 IRCs. (Walters-NJ)

PORTUGAL: CTP, NATO Oeiras, 6389, PFC w/all data returned in 15d air for 1 IRC & EE rpt thru British Field Post Office #67. (Walters-NJ)

U. S. A.: WED40 Manahawkin NJ, 10515, new Bell System no data cd in 30d surface for ms. (Holbrook-MD)
KOK, ITT Cerritos CA, 12993, PFC completed & returned in 9d surface for ms. 10kw. (Mercado-CA)
KLB, ITT Seattle WA, f/d PFC in 10d srfc for ms. (Walters-NJ)
NMF USCG Marshfield MA 8728 PFC 18d srfc for ms. (Walters-NJ)
WSL, ITT Brentwood NY 4343, mimeo form ltr 13d surface for ms. VS: Burton B. Hart, Assistant Manager. (Walters-NJ)

ISRAEL: 4XO Haifa R. 6470, f/d form ltr in 25d air for EE rpt & 3 IRCs. (Walters-NJ)

AIRCRAFT: USAF Plane "Gull 24" on ground @ Homestead AFB at time of reception, 8993, PFC & pers ltr in 6d surface for SASE (used). (French-MD)

SHIPS: GYZA "Mysia" Shell tanker, 16716, ltr QSL & photo in 34d air stated ship anchored @ Bonny, Nigeria. (Holbrook-MD)
NAON USS New Orleans 6723 PFC returned completed after being sent back for lack of data, total of 54d air; ms. 1kw. (Chabak-CO)
NODM CGC Hornbeam 2182, completed PFC & photo rec'd via USCG Woods Hole MA, MS returned. (Holbrook-MD)
PCYI "Barentsz Zee" tug, 16716, 250 mi. NW of Paramaibo, ltr QSL & photo. (Holbrook-MA) Air or surface, Hank? Did you send RP?-Ed.

NEW OR CHANGED ADDRESSES
Marsh Harbor Beacon: Bahamas Telecommunications Corp. - P.O. Box N-3048 - Nassau, Bahamas.
Call Aeradio: Jefe Torre de Control - Aeropuerto "Palmaseca" - Cali, Colombia.
Telecommunications Internationales de Mali - B.P. 273 - Bamako, Mali
CGC Hornbeam - c/o USCG Base - Woods Hole, MA 02543.
GTP NATO Portugal: NATO Station - APO New York, NY 09678.
ROGALAND Radio - Postboks 67 - 4310 Ganddal, Norway.

BAD NEWS FOR DXERS OF VOICE MODE MARITIME RADIO TRANSMISSIONS

A new regulation is contained in the Final Acts of the World Maritime Administrative Radio Conference, Geneva, 1974, effective Jan. 1, 1976: "18. Coast stations shall not occupy idle radiotelephone channels by emitting identifications signals, such as those generated by call slips or tapes. Exceptionally, a coast station when requested by a mobile station for the purpose of establishing a radiotelephone call, may emit a receiver tuning signal of not more than 10 seconds duration."
Looks like this bans coast station voice markers, so do your coastal station voice dxing before the end of this year. (French-MD)

LOGGINGS

COMPRESSING 2 months' loggings into one has forced us to edit with a meat cleaver this month! In the future, as in the past, we shall make every effort to use all complete loggings submitted.

ALASKA: 2670 0816 NMJ USCG Ketchikan Mar Notice AM (Chabak-CO)
5696 0303 NOU CGAS Annette Is. t/c w/NOJ SSB (Chabak-CO)
0532 NOJ USCG Kodiak YL EE a/c t/c SSB (Chabak-CO)

CANADA:	368	0254	"L" beacon Toronto CW (French-MD)
	530	0308	"NB" mil beacon Nabob ONT CW (French-MD)
	2598	0335	VCS Halifax NS Marine Op wx CW (MacLennan-ONT)
		0105	VBG Toronto Marine Op wx CW (MacLennan-ONT)
	2970	0425	Gander VolMet Nfld. OM EE wx AM (DeVries-MA)
	6351.5	0156	VAI DOT Vancouver BC CQ mkr CW (Thompson-NM)
	8465	2355	CKN Vancouver Mil V mkr CW (MacLennan-ONT)
	9006	0137	Trenton Mil w/Military 755 USB (French-MD)
	10335a	1852	Halifax Mil wx best SSB (French-MD)
GREENLAND:	14900	2030	OX168 GTO Godthaab YL Dan vm USB (Smith-MA)
U. S. A.	335	1005	LAX VLF wx bureau bcst L.A., CA AM (Shaw-CA)
	2670	0600	NMG USCG Belle Chase LA EE tfc AM (Straumanis-II)
	2980	1300	VolMet Oakland CA OM EE wx (Miller, Shaw - CA)
	4372	0217	KMI ATT Oakland CA OM EE tfc USB (Benjamin-CA)
	4406.3	2328	WOO ATT Manahawkin NJ OM EE vm SSB (Wirrell-MA)
	4431	0225	WOM ATT Ft Lauderdale FL tfc USB (Benjamin-CA)
	4431.8	0257	VAI DOT Vancouver BC tfc USB (Benjamin-CA)
	4473	0105	KIG448 CAP Nashville TN OM EE roll SSB (Scott)
	4562.5	1124	VOA EE feeder Delano CA SSB (Kerrigan-IL)
	5652	2136	WSY70 NY VolMet OM EE wx AM (Kerrigan-IL)
	5688	0500	AFES MacDill AFB a/c tfc SSB (Wirrell-MA)
	5747	0400	VOA Greenville NC EE feeder SSB (Smith-MA)
	5696	0033	NMB9 CGAS Savannah GA R. ck.w/Miami SSB (Chabak)
		0259	NMC CG San Bruno w/ NOJ Kodiak SSB (Chabak-CO)
		0423	NMH CGAS Alexandria VA tfc LSB (Chabak-CO)
		0731	NOB CGAS SanFran a/c tfc SSB (Chabak-CO)
		2354	NMQ Pt Vicente CA tfc SSB (Chabak-CO)
		2358	NOY8 CGAS Corpus Christi TX tfc SSB (Chabak-CO)
	6376	0153	WCC RCA Chatham MA V mkr CY (Thompson-NM)
	6378	0226	AFL Loring AFB Limestone ME clg TG696
	6521.8	0532	NMH USCG Alexandria VA OM EE wx SSB (Straumanis)
	6926	0233	KKN50 DOS Wash DC QRA mkr CW (MacLennan-ONT)
	8765.4	1130	NMF USCG Boston R., Marshfield MA OM EE wx LSB (Smith-MA)
	8868	1905	WSY70 NY Aeradio w/TWA881 SSB (DeVries-MA)
	8903	1630	Oakland VolMet OM EE wx (Shaw-CA)
	8989	0005	AGD Vandenberg AFB CA a/c R. cks USB (Shaw-CA)
	11180	1530	AFES MacDill AFB phone patch a/c tfc SSB (Scott)
	11246	0013	AFES MacDill AFB Tampa FL tfc SSB (Kerrigan-IL)
MEXICO:	4270	0135	XFU Veracruz R. CQ mkr CW (Thompson-NM)
	12778	2240	XFL Mazatlan R. CQ mkr CW (MacLennan-ONT)

CARIBBEAN

BAHAMAS:	2558	1130	VPN Nassau EE hurricane rpt AM (Scott-FL)
BELIZE:	10700	1402	ZIK48 Belize City OM EE vm SSB (French-MD)
BERMUDA:	6487.5	0125	VRT C&W Bermuda R. V mkr CW (Thompson-NM)
CUBA:	7930	0233	CLN92 IRTS Havana YL EE/SS vm SSB (French-MD)
GUANTANAMO:	7433	0001	NAW26 AAC&R OM EE vm SSB (French-MD)
JAMAICA:	6470.5	0235	6YI Kingston R. CQ mkr CW (Straumanis-IL)
MARTINIQUE:	8554	1580	FUF Fr. Navy Fort de France V mkr CW (Thompson)
PUERTO RICO:	10101.6	0725	WWL20 AAC&R San Juan OM EE/SS vm USB (MacLennan)
TRINIDAD:	8847	2321	Piarco Aeradio w/Springbok 205 AM (French-MD)
	8710	0100	9YL North Post R. Vmkr & tfc list CW (OlssonCT)

CENTRAL AMERICA

CANAL ZONE:	5710	0014	AHF Albroke AFB clg Gulf 27 SSB (Chabak-CO)
	8993	0858	AHF Albroke AFB w/Hurricane Hunter Gulf 35 SSB (Chabak-CO)
	17136.8	1518	NBA USN Balboa CQ mkr CW (French-MD)
COSTA RICA:	8478	0226	TIM Limon R. V mkr CW (Straumanis-IL)
	13099.5	2300	NBA USN Balboa CQ mkr CW (French-MD)

SOUTH AMERICA

ARGENTINA:	8726	0340	LSA4 Boca R. V mkr CW (Olsson-CT)
	8754.7	0320	LPP54 Pasadas Misiones R. OM SS vm LSB (Smith)
	8757.7	2319	LPL24Gen. Pacheco R. OM SS vm SSB (French-MD)
	15000	2320	LOL YL S3 time sig AM (DeVries-MA)
BRAZIL:	9130	0120	EMBRATEL Rio YL EE/FF/SS-OM PP vm SSB (Smith-MA)
	12754	0000	PWZ USN Rio V mkr CW (MacLennan-ONT)
	12978	2324	PPL Salinópolis R. PTT V mkr CW (Mercado-CA)
	17160	2353	PWZ USN Rio V mkr CW (Koizumi-JAPAN)

CHILE:	6481.5	0733	CCS Armada de Chile Santiago V mkr (Straumanis)
	8826	2348	Antago Air clg Mendoza Air in SS AM (French-MD)
	12256	0115	CGM Navy Punta Arenaz V mkr CW (Thompson-NM)
COLOMBIA:	6386.5	0150	HKC Buenaventura R. CQ mkr CW (Thompson-NM)
	6666	0833	Cal Aeradio wkg Panama AM (French-MD)
	12781.5	0050	HKB Barranquilla R. CQ mkr CW (Thompson-NM)
SURINAM:	13046	0025	PZN LTT Paramaibo CQ mkr CW (Koizumi-JAPAN)
URUGUAY:	8602	2210	CWA Cerrito R. V mkr CW (Koizumi-JAPAN)
	13371.2	0038	CWD4 Cerrito R. V mkr CW (Thompson-NM)
VENEZUELA:	6100	1000	YVTO Cagagal Obs Caracas OM time sig AM (Jernakoff-NY) 1016(Zeigler-MI) 0626(WirrellMA)
	8704	0345	YVG La Guaira R. V mkr CW (MacLennan-ONT)

EUROPE

AZORES:	5710	0227	CUW Lajes AFB w/MAC40633 SSB (Chabak-CO)
BELGIUM:	6411	0256	OST Ostend R. V mkr CW (Straumanis-IL)
	18780	1130	PTT Brussels EE/FF/Flem vm USB (Kiyomiya-J)
DENMARK:	14833.5	2050	OKR54 PTT Copenhagen YL Dan vm LSB (Smith-JA)
ENGLAND:	8496.5	2227	GKS Portishead R. ID mkr CW (French-MD)
	8740	0115	BPO Maritime OM EE vm LSB (Smith-MA)
	12150a	2305	BBC EE feeder SSB (DeVries-MA)
ESTONIAN SSR:	8479	1101	UAH Tallinn R. V mkr CW (Olsson-CT)
FRANCE:	8510	2152	FFS4/FFT4 SSte R. CQ mkr CW (Straumanis-IL)
	8751.2	1901	FFL42 St Lys R. OM FF-mx vm SSB (French-MD)
	9117.5	0200	FYJ3 FTS Paris OM EE/FF vm USB (Smith-MA)
FINLAND:	8725	2053	OFJ Helsinki R. freq mke CW (Olsson-CT)
GERMANY, E.:	8805.6	0130	DHS Ruegen R. YL G3 vm w/CW ID LSB (Smith-MA)
GERMANY, W.:	6475.5	0145	DAM Norddeich R. V mkr CW (Thompson-NM)
	8511.9	0028	DAL Norddeich R. V mkr CW (Straumanis-IL)
	9890?	0057	AEA USASTRATCOM Pirmasens OM EE vm SSB (French)
	10530	1956	AEA USASTRATCOM Pirmasens OM EE vm SSB (French)
GYBRALTAR:	12825a	2200	GYU BRN ID mkr CW (MacLennan-ONT)
GREECE:	8757.6	0500	Athina R. OM EE vm SSB (Smith-MA)
HOLLAND:	6895	2357	PBC Soerree Naval N13A-V mkr CW (French-MD)
	8562	2235	PCH? Scheveningen R. CQ mkr CW (MacLennan-ONT)
	19710	1140	PTT Kootwijk OM EE vm LSB (Kiyomiya-JAPAN)
ICELAND:	12175	1820	TFA Reykjavik R. PTT EE/Ice vm SSB (DeVries-MA)
IRELAND:	2889	0551	EIP Shannon Aeradio OM EE wx AM (Wirrell-MA)
ITALY:	13015.5	1630	IAR Roma R. V mkr CW (Thompson-NM)
	19178	1120	ITALCABLE Rome EE/FF/SS/It vm USB (Kiyomiya-J)
NORWAY:	12876	1645	LFW Rogaland R. V mkr CW (Thompson-NM)
POLAND:	8557	0900	Szczecin R. V mkr CW (Koizumi-JAPAN)
PORTUGAL:	8550a	0604	CTP Navy Lisboa CQ mkr CW (Straumanis-IL)
SPAIN:	8770.4	2314	Pozuelo del Rey tfc list SSB (French-MD)
SWEDEN:	8498	0000	SAG2 Göteborg R. CQ mkr CW (Straumanis-IL)
SWITZERLAND:	13024	0050	HEB Berne R. CQ mkr CW (MacLennan-ONT)
TURKEY:	10765	0034	AJO U.S.Army Adana OM EE vm SSB (French-MD)
UKRAINIAN SSR:	8593	2025	UF8 Odessa R. CQ mkr CW (Olsson-CT)
U. S. S. R.:	8620	0315	UBN Zhdanov R. V mkr CW (Olsson-CT)
	8635	0010	UJQ Kiev Ukraine V mkr CW (MacLennan-ONT)
	13114.5	1418	UMV Murmansk OM RR vm USB (Kiyomiya-JAPAN)
YUGOSLAVIA:	12780	2140	YUR Rijeka R. V mkr CW (MacLennan-ONT)

AFRICA

ALGERIA:	8826	0312	FNA Algiers Aeradio EE tfc SSB (Smith-MA)
ANGOLA:	6488	0233	XKV27 Luanda Radionaval V mkr CW (Straumanis-IL)
CENTRAL AF. REP.:	9298m	0220	FCR Bangui YL EE vm SSB (Smith-MA)
ETHIOPIA:	10835	0220	ETJ84 Addis Ababa ETS YL EE/Amh vm SSB (French)
EQUATORIAL GUINEA:	20206	1509	3CA67 Banapa w/Eay49 V mkr CW (French-MD)
LIBERIA:	7827a	0143	KKN44 US Embassy Monrovia QRA mkr CW (French-MD)
MALI:	10694	0127	TZB910 Bamako YL EE/FF vm SSB (French-MD)
MAURITIUS:	12988.5	1352	3ZL5 BRN Vacoas V mkr CW (Straumanis-IL)
MOROCCO:	6272	0736	AJI USAF Sidi Slimane V mkr CW (Trubee-HI)
NIGER:	10846	0030	6UR8 Niamey EE/FF vm SSB YL (French-MD)
REUNION IS.	8469	2004	FFD PTT St Denis CQ mkr CW (Compton-MA)
SENEGAL:	6353	0640	6VA Dakar R. CQ mkr CW (MacLennan-ONT)
SO. AFRICA:	5433a	1840	ZSY Hood Pt R. w/Victoria Key tfc AM (Scott-FL)
		1540	ZSQ3 Port Eliz. R. Emerald Hill EE tfc SSB (Scott-FL)
TUNISIA:	8552	2335	FUX Fr. Navy Bizerte V mkr CW (Olsson-CT)
UPPER VOLTA:	11095	0055	XTA9 FCR Ouagadougou YL EE/FF vm SSB (French)

ASIA

HONG KONG:	8534	1115	GZO BRN ID mkr CW (Olsson-CT)
INDONESIA:	8542	1440	PKI Jakarta R. CQ mkr CW (Koizumi-JAPAN)
	8694	0918	PKM Bitung R. CQ mkr CW (Koizumi-JAPAN)
JAPAN:	4010	1252	NDT USN Yokosuka ID mkr CW (Kiyomiya-JAPAN)
	6738	0747	Yokota Airways OM EE clg QQ974 SSB (Chabak-CO)
	8523.4	0943	JOR Nagasaki R. CQ mkr CW (Straumanis-IL)
KUWAIT:	9230a	0340	9KT27 PTT YL EE/AA mx vm (new?-Ed.) (Smith-MA)
MALAYSIA:	8698	1120	9MG2 Penang R. CQ mkr CW (Olsson-CT)
SINGAPORE:	8718	1130	9VG20 Singapore R. V mkr CW (Olsson-CT)
SAUDI ARABIA:	8480	0330	HZY AR-AM Oil Co CQ mkr & tfc 11st CW (MacLennan)
VIETNAM:	6205	0725	XVZ Saigon R. V mkr CW (Trubee-HI)

FRENCH ANTARCTICA

NEW AMSTERDAM IS. 8690 1205 FUJ4 V-CQ mkr CW (Koizumi-JAPAN)

OCEANIA

AUSTRALIA:	7500	1000	VNG APO Melbourne OM EE time sigs AM (Jernakoff)
CHRISTMAS IS.:	6204.2	0640	Christmas R. OM EE clg Chiaka(sp?) LSB (Trubee)
COOK IS.:	350	1054	"RG" aero beacon Raratonga CW (Trubee-HI)
GUADALCANAL:	242	2000	"HN" beacon Honiara CW (Trubee-HI)
GUAM:	385	1102	"GUM" air beacon CW (Trubee-HI)
HAWAII:	320	1020	"FSS" beacon Fr. Frigate Shoals CW (Trubee-HI)
	5519	0655	Honolulu VolMet EE wx KVM70 AM (Miller-CA)
	11179	0420	AGA Hickam Airways w/EG227 SSB (Chabak-CO)
	16978	0201	KHK RCA Honolulu R. V mkr CW (Koizumi-JAPAN)
JOHNSON IS.:	389	0535	"APO" Appolo aero beacon off freq CW (TrubeeHI)
N. ZEALAND:	12943.5	0600	ZLP2 RNZN Awarua V mkr CW (Trubee-HI)
TAHITI:	5151	0940	FUM Fr. Navy Papeete-Mahina V mkr CW (Trubee)
	9053	0908	FZ090 FTS Papeete YL EE vm SSB (Chabak-CO)
WAKE ISLAND:	254	1045	"AWK" aero beacon CW (Trubee-HI)

SHIPS

2182	0102	"Aegis Thunder" C4AR (Cypriot) clg Havana AM (French-MD)
4208	0820	EATF "Perfecto" cargo SS tfc w/LPD USB (Trubee-HI)
5696	1521	4YH Ocean Station Hotel EE R. ck USB (Olsson-CT)
8362	0110	KFCP "Mariposa" liner clg KPE CW (Thompson-NM)
8773a	0117	WMEY "American Clipper" clg WCC CW (French-MD)
12355	0635	JKNG "Daichi Maru" JJ clg JDO USB (Trubee-HI)

AIRCRAFT

6540	0241	SPRINGBOX 205 wkg NY SSB (French-MD)
8826	0127	Zambian 801 clg N'Djamena SSB (French-MD)

TACTICAL

6697	0050	YANKEE OM EE tfc to STRONGBOX SSB (Chabak-CO)
	0237	BUCKO OM EE tfc to a/c YANKEE XRAY SSB (Chabak-CO)
	0501	QUEENSLAND OM EE R. ck w/IVANHOE SSB (Chabak-CO)
6761	0220	SADDLESIDES OM EE w/BANJO 74 SSB (Chabak-CO)
	0313	SMOKY VALLEY Foxtrot type bc on freq Quebec SSB (Chabak-CO)
9060	1906	VALHALLA w/OXBOW 94,95,etc. on PAPA 1 freq SSB (Chabak-CO)
9584a	0043	03 wkg 3A & 3B mentd 2nd Armd Div SSB (Hauser-OK)
9693	2047	ANALOG 1 wkg ANALOG 2 SSB (Hauser-OK)
11243	0435	ANGRY MAN w/FOXTROT type bc SSB (Chabak-CO)

"SPY" NUMBERS STATIONS

3868m	0542	YL SS 5-digit groups SSB (Wirrell-MA)
4490m	2307	YL SS 5-digit SSB (Wirrell-MA)
5730a	0240	YL GG 5-digit ea gr rptd, freq "Achtungs" SSB (Brick-MA)
5810a	0105	YL SS 3-digit ID, 10 digits, 10 tones, then 4-digit groups SSB (Brick-MA)
6440m	0433	YL GG 5-digit SSB (Wirrell-MA)
9075	2330	YL SS 4-digit SSB (Zeigler-MI)
10015	1932	"286" ID "1716 43" 43 gr 5-digit msg, s/off "286" CW (French)
11615	2039	YL EE 5-digit, ea gr repeated off 2047 AM (Talbot-NI)
15520	1320	"V-149" ID 5-digit grs CW (Scott-FL)

RADIOTELETYPE

BELIZE:	13465	2055	ZIK62 Belize City EE test 66wpm 170shift (Green)
PUERTO RICO:	7995	0025	WVQ2 FCC Monitoring Sta Isabela EE test 60/170 (Scott-FL)

QSL REPORTS



Editor: Bill Cleveland
2441 Fairview Drive
Visalia, Calif. 93277



Verified countries -- 175

Deadline: 15th of month

The equinox has passed, fall is here, business and reception is picking up. With 60 reporters this month that number is up slightly, but the total number of reports (350, unless I miscounted--which is probable) is down slightly. But look at that country total--five more to drool over and to lose more sleep trying to add to our individual totals. This month we add (alphabetically) Galapagos Islands, Lesser Sunda Islands, New Hebrides, Qatar, and Thailand. On the debit side of the ledger, I have removed the tentative Swan Island (reported last month) from the list as R. Swan is actually located in San Pedro Sula in Honduras. Win a few and lose a few. Doug Snyder lost on the Ulan Bator and is feeling rejected. He notes, however, that the rejection letter gives the address as CPO Box 356, not CPO Box 365 as reported in WRTH. Address collectors take note. However, Doug was a winner in the BOD election, so perhaps he considers it an even trade. May I take this opportunity to offer my congratulations to the successful contestants in the BOD election; also a hearty welcome to the 8 first time contributors to this column for 1975--many thanks for your contributions and keep them coming. And to the old hands that report faithfully month after month--you're what makes this column possible. All I do is type it up. My thanks for your continuing support. Now if a few of my old reports would just be honored with QSLs.....

EUROPE

- ALBANIA:** R. Tirana, 6200, cd of R. Tirana (?) building in 4 wks air for 2 IRCs, EE rpt (JERNAKOFF NY)
R. Peking Relay, 9780, date/fqy cd "Celebrating a bumper harvest" in 14d air, + a medal (FLEMING NY) Are you a "Hero of the Harvest", Kevin? bc
- AUSTRIA:** ORF, 6155, f/d cd "Sunny South of Austria" in 55d air for 2 IRCs (ROMANI MI)
- BELGIUM:** ORU, 6080, date/fqy map cd, no time (YAJKO PA), map and man in chair cd w/date only in 38d, no rp (McINTOSH PA); 9730, map cd in 47d air, no rp (WHITE FL); 9755, map cd in 30d for 2 IRCs (DAY CA) and in 5 wks for 2 IRCs (JERNAKOFF NY)
- BULGARIA:** R. Sofia, 9585, f/d "Nessebur" cd in 82d air, no rp (DeVRIES MA); 9700, "Bachkovo Monastery" cd with f/d in 53d air, no rp (McINTOSH PA), same + pennant in 42d, no rp (FLEMING NY), f/d "Climent of Ohrid University" cd in 135d for 2 IRCs (ROMANI MI) same in 93d for 1 IRC (KUMMER KY), same in 96d for no rp, same in 160d, no rp (MIKLEJEWSKI MN); 15310, f/d "Nessebur" cd in 53d, no rp (McINTOSH PA)
- CZECHOSLOVAKIA:** R. Prague, 5930, "Trade Fair Grounds" cd w/full data in 15 wks for no rp (VOGKEROOTH PA); 7345, "Hradčany Castle" cd w/full data in 40d air, no rp (BOWEN NS), same in 33d + pennant, no rp (DAY CA), f/d city photo cd in 40d, no rp (McINTOSH PA); 9540, f/d castle cd in 43d for 2 IRCs (KARKI ID), f/d "High Tatra Mountains" cd in 38d, no rp (VOGEL PA), f/d "Trade Fair Grounds" cd in 49d for 2 IRCs (HARDING CA); 11990, f/d "Old Town Square" cd in 38d air, no rp (MIKLEJEWSKI MN)
- DENMARK:** R. Denmark, 15165, radiohouse aerial tower cd in 29d air for 1 IRC (WHITE FL)
- FINLAND:** R. Finland, 15185, f/d "Autumn in Finland" cd in 3!!! days (WILSON IL), same in 9d (FLEMING NY), same in 17d for 1 IRC (DAY CA) Guess it doesn't pay to pay, Ed! bc
- FRANCE:** R. France International, 11940, f/d RFI cd in 60d air, no rp (TRAUTSCHOLD WI)
- GERMANY (Federal Republic):** Deutsche Welle, 9690, f/d multicolored circles cd in 98d air for no rp (DEVRIES MA)
- GREAT BRITAIN:** BBC, 6175, usual Thames cd in 40d air for 2 IRCs (MILLER CA)
- GREECE:** VOA (Kavala), 7270, /fd Capitol cd in 11d (SMITH FL), JFK Center cd w/full data in 9d (McINTOSH PA), same with time/fqy only in 7d (WHITE FL), same w/date only in 10d (MOSMAN IL), f/d cd, no desc, in 4d (TRAUTSCHOLD WI)
- HOLLAND:** R. Nederland, 6165, f/d "Mint Tower" cd in 19d air for 1 IRC (BETHGE MO), same in 17d (TESTA'S MA - 2 cds), "New Lutheran Church" cd in 15d (TESTA'S MA). Are you sure about site of xmsn? WRTH lists this fqy as exclusively Bonaire! bc; 9715, f/d "Mint Tower" cd in 16d air, no rp (ROMANI MI), same in 21d, no rp (DURANT MD), same in 15d for 2 IRCs (HARDING CA), same in 18d for 2 IRCs (VOGEL PA), f/d "Round Lutheran Church of 15th Century" cd in 11d for MS (WHITE FL); 11730, "Mint Tower" cd in 16d, no rp (YAJKO PA) same in 16d for 1 IRC (ROJEWSKI WA), "New Lutheran Church" cd in 50d (FLEMING NY)
- HUNGARY:** R. Budapest, 7220, blue palace cd in 35d air (McINTOSH PA); 9655, f/d cd of bridge crossing Buda & Pest in 12d air, no rp (GETZEL NY); 9833, blue palace cd in 70d for 1 IRC (THOMPSON NM), view of Budapest cd in 50d sfc, no rp (DAY CA)

ICELAND: ISBS, 12175, f/d picture cd of Iceland in 30d for 3 IRCs, EE rpt, v/s Kristin Dorvaldsdóttir (BARBER MAN)

ITALY: RAI, 6010, f/d cd "Il Sellaento Italiano" in 14 wks for no rp (VOCKEROTH PA); 9575, f/d "Genova, Palazzo Granello" cd in 89d air, no rp (JAKUBIAK MI)

LUXEMBOURG: R. Luxembourg, 6090, f/d antenna cd in 23d sfc for 1 IRC (ZEIGLER MI), same in 20d for 1 IRC (BARBER MAN), same in 25d for 1 IRC (WIRRELL MA), same in 21d for 1 IRC (JERNAKOFF NY), same in 28d for no rp (BOWEN NS), same in 135d for 2 IRCs (TALBOT WI)

MALTA: Adventist World R., 9755, f/d orange/black people of the world cd in 18d air for 2 IRCs, Malta stamped on back (HOFFMAN PA)

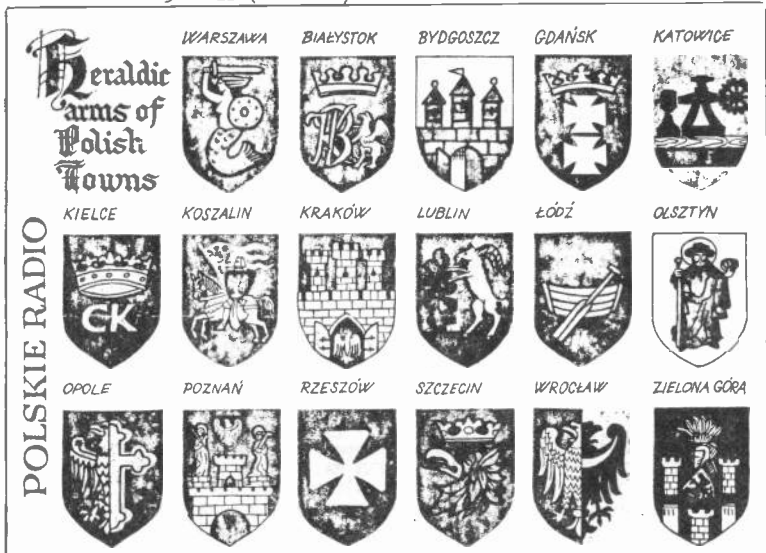
Deutsche Welle Relay, 6100, f/d cd in 18d air for no rp (WASHBURN ME)

Xandir Malta (Valetta), 9755, f/d form ltr w/wrong fqy in 15d air for no rp (MAYER IL)

I'll bite Alan, who are they? Can't find anything like this in WRTH or FBIS. bc

NORWAY: R. Norway, 9645, f/d scene of boats and docks in 14d air, no rp (McINTOSH PA), Mountain cd in 19d air, no rp (GETZEL NY); 17795, f/d "Nordfjord" picture in 14d air for 1 IRC (KUMMER KY), f/d "Stave church from Gol" cd in 16d air, no rp (WHITE FL)

POLAND: Polish R., 6135, f/d red/gray "30 years of People's Poland" cd in 41d air for 1 IRC (VAN FOSSEN OH); 7285, f/d 30th anniversary map/flag cd in 31d air, no rp (BOWEN NS); 11815, cd w/symbols of the arts, 26d air, no rp (DAY CA), 30th anniversary cd in 30d, no rp (DAY CA), same in 45d for 2 IRCs (TALBOT WI), same in 28d, 1 IRC (BIXBY CA), f/d cd "Heraldic arms of Polish towns" in 29d, no rp (WHITE FL), brown map cd w/full data in 130d for no rp (DEVRIES MA); 11840, "Heraldic arms" cd (MOSMAN IL), 30 years of People's Poland cd in 34d air (YAJKO PA)



Thanks to
Stan
Miklejewski

PORTUGAL: Adventist World R., 9670, f/d globe cd in 130d air for no rp (McINTOSH PA)

R. Portugal, 6025, f/d picture cd of full-rigged sailing ship, 14d air for 2 IRCs (ROJEWSKI WA)

ROMANIA: R. Bucharest, 9570, f/d red/blue/gold circle design cd in 52d air for ?? IRCs (BERNSTEIN CA); 9690, f/d black/white photo of ski slopes and lodge in 83d air for 2 IRCs (said IRCs not needed)(ROMANI MI)

SPAIN: RNE, 11880, date/fqy antenna tower cd in 68d for 2 IRCs (KARKI ID)

SWEDEN: R. Sweden, 9695, f/d blue/yellow map cd in 54d air for 2 IRCs (ROMANI MI); 11705; same cd in 21d for 2 IRCs (HARDING CA), same in 40d for 1 IRC (DAY CA), 2 cds in 3-5d (WILSON IL); 15315, same cd in 29d for 2 IRCs (KARKI ID), same in 40d for no rp (McINTOSH PA), same in 4d (WILSON IL)

SWITZERLAND: SBC, 11715, f/d "Old bridge near Intragna" cd in 76d sfc, v/s J.A.Chisholm (THOMPSON NM), "Holbein Fountain, Basle" cd in 41d sfc, no rp (BETHGE MO), f/d "Klaus-jagen--old St. Nicholas custom" cd in 43d air, no rp (BERNSTEIN CA); 15140, same cd in 32d sfc (WILSON IL)

USSR:

Lithuanian SSR: R. Vilnius, 7355, f/d cd in 69d air, EE rpt, no rp (WASHBURN ME); 9685, f/d cd w/symbolic tree, birds and concentric radio wave symbols, 52d air for no rp (SCHWARTZ DE); 11720, f/d "Lietuvos Radijas" cd in 60d air, no rp (JAKUBIAK MI)

RSFSR (European): R. Moscow, (no sites except as listed), 9530, 9600, 9680, 9710, 12035, 12055 (Armavir), 12060 (Voronezh), 15295 (Voronezh), f/d flag cds in 29d (DEVRIES MA - also rcvd pennant)(VOGEL PA - 32d)(MARTI CA - 23d)(VOCKEROTH PA - 7 wks); Grand Kremlin Palace cds (SMITH FL - 22 & 23d); view of Kremlin cd in 25d (MAYER IL)(BEAUDOIN CT - 41d)

USSR:

RSFSR (European-continued): (VOGEL PA - 32d); Sputnik Memorial cd in 30d (SMITH FL), 2 cds in 32d (VOGEL PA); view of Kremlin and Moskva River in 32d (VOGEL PA); no desc. in 38d, v/s Inna Lazerva--S. Asian svc (MAYER IL)
Ukrainian SSR: R. Kiev, 11720, f/d circle and triangle design cd in 62d air, no rp (BOWEN NS), f/d circle design cd in 69d air, no rp (DeVRIES MA); 11735, f/d circle design cd in 64d air for 2 IRCs (ROMANI MI); 12050, f/d "Shchors monument" in Kiev cd in 63d air for no rp (DAY CA)
 R. Moscow, 9660 (Ivano-Frankovsk), f/d Kremlin view cd in 23d air, no rp (SMITH FL); 9700 (Nikolayev) same in 29 and 39d (DeVRIES MA); 11770, f/d city buildings cd in 29d air (HARDING CA); 17880, Kremlin view cd in 34d air (SMITH FL)
VATICAN CITY STATE: Vatican R., 5995, f/d picture cd of gardens near Vatican R. bldg, in 38d sfc for no rp (HOFFMAN PA); 11845, f/d color picture cd of xmtr station and antennas in 52d sfc for 2 IRCs (ROMANI MI); 17840, f/d color photo of Vatican Gardens in 22d air for no rp (SMITH FL)

AFRICA

ALGERIA: Rdif. TV Algerienne, 11715, f/d white cd w/blue Arabic writing in 90d air for 2 IRCs and FF rpt (BARBER MAN)
ASCENSION ISLAND: BBC Atlantic Relay, 9510, usual Thames cd w/"Atlantic Relay" typed in, 72d sfc, no rp (WASHBURN ME); 9580, no data cd w/view of Parliament Buildings from Thames River in 31d air, no rp (ROMANI MI), "same old cd" (which one? bc) in 41d air for 1 IRC (WIRRELL MA)
EGYPT: R. Cairo, 9475, f/d black/white city cd in 53d air for 1 IRC (WIRRELL MA)
ETHIOPIA: ETILF, 7165, 2 f/d blue/white cds, pennants and skeds in 6 mo total after f/up, 1 IRC each, v/s Eliane Mbodwam (BARON PA); 11830, same cd, two pennants in 6½ mo, 3 IRCs (WIRRELL MA)
GHANA: GBC, 11850, usual f/d plain cd w/green/yellow/red border in 30d air for 2 IRCs, request reports to Propagation Engineer, PO Box 1633, Accra (TALBOT WI)
IVORY COAST: R. Abidjan, 11920, usual Abidjan cd in 18d air for 1 IRC, EE rpt (TRAUTSCHOLD WI) PA)
LIBERIA: ELWA, 11950, f/d native drummer cd in 8 mo sfc for 2 IRCs and EE rpt (VECCHIOLA VOA, 6035, f/d Capitol cd in 7d sfc (WIRRELL MA)
MALAGASY (Republic): R. Madagascar, 17730, f/d cd w/picture of Rdif Nationale building in 180d air for 2 IRCs, EE/FF rpt (BARBER MAN)
MOROCCO: VOA, 15205, JFK Center cd in 6d sfc (WHITE FL)
NIGER: ORTN, 5020, date/time only cd in 132d for FF rpt and tape sent registered mail (WASHBURN ME)
NIGERIA: V. of Nigeria, 7275, f/d green/white flag cd w/station insignia in 35d air for 1 IRC and EE rpt (VAN FOSSEN OH), same in 6 wks for 2 IRCs and EE rpt (JERNAKOFF NY)
RHODESIA: RBC, 3396, f/d antelope cd in 40d for 2 IRCs, EE rpt, v/s E. McKenzie (BEAUDOIN CT)
SOUTH AFRICA: RSA, 3995, 4875, 5980, 7270, 92525, 9285, 9695, 11900, 15220, f/d cds, some signed Pieter V.D.M. Martins. Cds include "Beach blooms at Blouberg" in 13-27d for no rp to 2 IRCs (HOFFMAN PA)(FLEMING NY)(DAY CA)(DeVRIES MA)(MARTI CA)(MILLER CA)(HERBOLD CA) "White rhino and calf" in 13-31d for 0-2 IRCs (DAY CA)(THOMPSON NM)(SMITH FL)(DuRANT MD)(HARDING CA); "Coral tree blossom" in 24-28d, no rp (WILSON IL)(DuRANT MD); "diamond" cd in 30d (VOCKEROTH PA); Night picture of Johannesburg in 3 wks (DOLYAK IA)
SABC, 3250, f/d industries cd in 86d air for 1 IRC (JAKUBIAK MI); 3980, same cd in 15d for 2 IRCs (TALBOT WI); 11790, same cd in 19d, no rp (SMITH FL)
TUNISIA: Rdif. TV Tunisienne, 11970, f/d ltr in FF, v/s B. Khoudja, in 29d air for rpt in Arabic and 2 IRCs (SCHWARTZ DE)

ASIA

AFGHANISTAN: R. Afghanistan, 15195, f/d cd w/pictures of Buddha, map of country, picture of new flag pasted over old one printed on cd, in 14 wks air for 1 IRC and EE rpt (WICKETT MD)
BRUNEI: R. Brunei, 7215, date/time map and mosque cd in 26d air for 2 IRCs (MAYER IL)
CHINA (People's Republic): R. Peking, 9780, "Red Flag Canal" cd in 27d air, date/fq only, no rp (BERNSTEIN GA); 11945, same cd in 17d air (MARTI CA); 15385, "On Patrol" cd in 20d air (ROJEWski WA); 17855, date/fq porcelain figures cd in 23d air (SMITH FL)
CYPRUS: BBC, East Mediterranean Relay, 11955, usual Thames cd in 17d, site typed in (BOWEN NS); 15420, same in 45d (HARDING CA)
INDIA: AIR, 11620, Taj Mahal cd in 130d for MS and EE rpt (BOYCE WA); 11810, f/d "Barge of Love" cd in 198d, 2 IRCs (MOSMAN IL)
INDONESIA: RRI Mataram/Lombok, 3223, f/d II ltr of confirmation w/xmtr and antenna data included, 175d air (30d after f/up) for MS (used) and Indo rpt, v/s Rinaldi (CLEVELAND CA)
IRAN: V. of Iran, 9022, f/d cd in 30d air for EE rpt, no rp (WASHBURN ME), Tabriz transmission center cd w/pennant in 24d air for EE rpt, no rp v/s M. Blacyon (WHITE FL)
IRAQ: R. Baghdad, 9745, f/d map cd in 92d air for 1 IRC, EE rpt (WIRRELL MA), same in 3 wks for 2 IRCs (JERNAKOFF NY)

ISRAEL: IBA, 9009, f/d cd "view towards the Shrine of the Book and the Knesseth Bldg" in 50d air, no rp (THOMPSON NM); 12025, same cd in 28d for 1 IRC (VAN FOSSEN OH), same in 55d for 2 IRCs (HARDING CA), Knesseth Bldg cd in 58d for 1 IRC (MARTI CA); 15485, "Shrine of the Book and Knesseth Bldg" cds (3) in 33d for no rp and 46d for 2 IRCs (THOMPSON NM)

JAPAN: NHK, 5990, f/d "Koto" cd in 10d air, no rp (THOMPSON NM); 9585, f/d "Kamakura" cd in 15d air, no rp (ROJEWski WA); 11875, "Koto" cd in 13d (SMITH FL); 15105, "Tachibina" dolls cd in 15d (SMITH FL); 15195, "Kamakura" cd in 10d (DAY CA), "Horai Pond and Cherry Blossoms" cd in 20d + taped voice ltr and songs in 15d in response to 60 min tape (MILLER CA); 15270, "Koto" cd in 15d (YAJKO PA); 15300, "Koto" cds in 5d (WILSON IL), in 8d (HARDING CA) and in 14d (FLEMING NY); 17725, "Koto" cd in 11d (MARTI CA); no fqy, "Tachibina Dolls" cd in 17d (YAJKO PA)

KOREA (Republic): R. Korea, 15335, f/d cd "Spring in Jeju-do" in 66d air for 2 IRCs (HARDING CA)

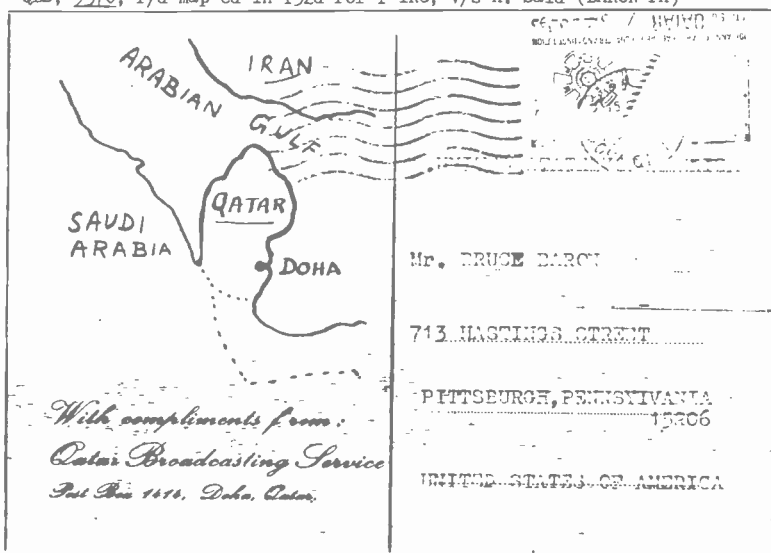
KUWAIT: R. Kuwait, 11940, f/d folder cd in 97d, no rp (MOSMAN IL), date/fqy map cd in 3 wks air for 2 IRCs (JERNAKOFF NY); 15345, f/d folder cd in 50d air, no rp (MERCADO CA); 15415, same in 9 wks for no rp (VOCKEROTH PA)

MALAYSIA: BBC Far Eastern Relay, 15310, usual Thames cd in 38d, no rp, no site listed tho requested, rcvd from London tho sent to Malaysian address (BARON PA); 15435, Thames cd w/"Far Eastern Relay" in 45d for 2 IRCs (HARDING CA) (Maybe the IRCs did it, Bruce! bc)

NEPAL: R. Nepal, 5000, f/d black/white cd in 632d air for 2 IRCs, EE rpt, v/s K.B. Khatri, Dir. General (MAYER IL) Maybe I shouldn't give up hope yet--mine is only 11 mo overdue.

PHILIPPINES: VOP, 9580, date/fqy coat of arms cd in 27d air for 1 IRC v/s Teresita D. Dianzon (WHITE FL), pers. ltr, magazines, and record in 32d air, v/s Julie S. Paderon (MA) (MILLER CA); 11840, VOA, Capitol cd in 4d (SMITH FL); 15290, JFK Center cd in 4d (WIRRELL)

QATAR: QBS, 9570, f/d map cd in 132d for 1 IRC, v/s A. Said (BARON PA)



SINGAPORE: R. Singapore, 6000, f/d housing development cd in 31d air for MS (GETZEL NY); 11940, same cd in 124d sfc for 2 IRCs, v/s T. Allanby (THOMPSON NM)

THAILAND: R. Thailand, 9655, "Royal Barge" cd in 189d air for 3 IRCs, EE rpt, v/s Danai Sriyajhai, Dir (JUNQUA JAPAN)

USSR:
RSFSR (Asiatic): R. Moscow (sites as indicated), 7100 (Sverdlovsk), 9710 (Petropavlovsk-Kamchatsky), 11970 (Kenga), 12050 (Khabarovsk), 15130 (Vladivostok), 15210 (Petropavlovsk-Kamchatsky), 17900 (Komsomolsk-on-Amur), f/d skyscraper cd in 30d air (THOMPSON NM) (CA) (MILLER CA - 18d), view of Kremlin from Moskva River cd in 29d (HARDING CA) and 40d (DAY Moscow skyline cd, no time (SMITH FL), flags of the Republics cd in 26d (THOMPSON NM) 40d (DAY CA), 50d (ROJEWski WA), rocket memorial cd in 29d (DEVRIES MA)(MILLER CA), 30d (THOMPSON NM); flags of the Republics cd in 41d for RR rpt (BEAUDOIN CT)

VIETNAM (Dem. Rep.): V. of Vietnam, 12035, ltr + sked in 120d for EE rpt and MS (BOYCE WA) (Where did you get North Vietnamese mint stamps, Dennis? bc)

OCEANIA

AUSTRALIA: R. Australia (f/d cds, v/s Peter Homfray), 5995, 6005, 9570, 9580, 9760, 11765, 15320, 17740, 17795, in 12-17d for 2 IRCs, 75-185d for no rp. "Kookaburra bird" cd (HARDING CA)(THOMPSON NM); "Koala and baby" cd (SMITH FL); "Stanley Chasm" cd (YAJKO PA)

AUSTRALIA (continued):

(TESTA'S MA)(DAY CA)(WILSON IL); "San Michele Sheep Station" cd (WILSON IL)(DAY CA); "Nocturnal Sugar Glider" cd (WILSON IL)(DAY CA)(SMITH FL)(STRAUMANIS IL); "Aboriginal Cave Painting" cd (THOMPSON NM)(SMITH FL)(DAY CA)(WILSON IL)
ABC Sydney, 6090, usual map cd in 11d air for 2 IRCs (LEAMY OH)
ABC Perth, 6140, usual map cd in 18d for 1 IRC (ROJEWSKI WA)
ABC Melbourne, 15230, usual map cd in 78d air for 2 IRCs (HARDING CA)
VNG (Time Station), 7500, f/d cd w/pix of VNG xmtr site in 5 wks air for 3 IRCs, (JERNAKOFF NY)

NEW CALEDONIA: R. Noumea, 7170, orange map cd with date/time in 90d for 1 IRC and MS, EE rpt (4th rpt sent)(HERBOLD CA), same in 48d for 1 IRC, FF rpt, v/s Roger Le Leizour (MERCADO CA), same in 6 wks sfc for 2 IRCs, EE rpt, v/s A. DuJardin (JERNAKOFF NY)

NEW HEBRIDES: R. Vila, 3945, f/d folder cd w/map, Tam-Tam picture, in 183d air for 2 IRCs, EE rpt (IRCs returned) (BODELL OR)

NEW ZEALAND: R. New Zealand, 9540, f/d "fishing" cd in 21d air, no rp (WICKETT MD), f/d cd w/country scene in 30d air for 2 IRCs (KARKI ID), same in 30d air for 1 IRC (ZEIGLER); 15280, f/d cd w/aerial view of Wellington in 29d for 1 IRC (DeVRIES MA)

PAPUA NEW GUINEA: R. New Ireland, 2428, f/d ltr w/mention of other DXers who sent reports, in 33d air for MS.(used), EE rpt + personal note explaining pidgin forms, v/s I. Tsika (MAYER IL)

R. Bougainville, 3322.5, plain black/white NBC cd in 19d air for MS, EE rpt, v/s A. Edoni (LEAMY OH)

NBC, Port Moresby, 4890, f/d ltr in 159d sfc, no rp, v/s Allen Hull (MIKLEJEWSKI MN), same in 16d for 2 IRCs, v/s Carolus Ketsimur (WHITE FL); 9520, same in 101d for 2 IRCs (MILLER CA)

TAHITI: R. Tahiti, 15170, f/d "Thumbs Up" cartoon cd in 4 wks air for 2 IRCs, EE rpt (JERNAKOFF NY), same in 44d for FF rpt and no rp (MERCADO CA), same in 52d air for 1 IRC and EE rpt (DeVRIES MA), same in 57d air for 1 IRC, EE rpt (WIRRELL MA), same in 80d air for 2 IRCs, EE rpt (WHITE FL), same in 83d air for 2 IRCs, EE rpt (ZINK CA)

S. AMERICA

BOLIVIA: La Cruz del Sur, 4875, fqy only cd of mountain and llama in 8½ wks for MS and EE rpt, v/s Rev. Augusto Clavijo (WICKETT MD)

BRAZIL: R. Brasil Central, Goiania, 4995, date/fqy ltr in EE in 34d for 1 IRC (BARON PA), same in 25 wks for MS and PP rpt (WICKETT MD)

R. Nacional de Brasilia, 11780, f/d map cd in 32d air for EE rpt, 3 IRCs (WASHBURN ME), same in 39d air for EE rpt, no rp (WHITE FL); 15245, same in 23d air for 1 IRC and EE rpt (BIXBY CA), same in 25d air for 2 IRCs EE rpt (said no pennants available)(DAY CA) 15445, same in 47d for PP rpt and MS (GETZEL NY). These map cds are reported as being tan, pink, and yellow, and green has been reported in previous months. bc

CHILE: V. of Chile, 9565, f/d harbor scene cd in 19d, no rp (MOSMAN IL)

COLOMBIA: R. Sutatenza, 5075, date/fqy info cd w/photo of station interior, in 218d sfc for EE rpt and MS (YAJKO PA)

La Voz del Llano, 6115, date only ltr in 30d for MS, SS rpt (ZEIGLER MI)

ECUADOR: La Voz de Galapagos, 4810, commercial type pc w/island scene, veri statement, in 18d air for MS and SS rpt, v/s HNA Laura Arbolaez for Padre Edgar Raul Bitto, Dir. + pennant (WHITEHEAD MA) Sorry if I messed up the name, but that's what it looks like.



ECUADOR (continued):

HCJB, 5970, 9560, 11910, 15115, 15300, v/s Sam Rowley, Herbert Jacobson, or Roger Stubbe. f/d cds, in 25-61d for no rp, 21d for 1 IRC. "Woodcarving in Ecuador, #2" (VAN FOSSEN OH) (BOWEN MS) (SMITH FL) (DAY CA) (MILLER CA) (YAJKO PA); "Phase 2-New Antenna Arrays" (YAJKO PA) "Phase 3-50 kw transmitter" (YAJKO PA); "Phase 6-RCA 100 kw transmitter" (YAJKO PA); 35th anniversary, series II-Power" (YAJKO PA); 35th anniversary, series IV (THOMPSON NM); antenna system in Pifo (SMITH FL); Mt. Chimborazo (MILLER CA)

GUYANA: GES (Action R.), 3290, f/d ltr w/rpt on station set up and sked in 10d for 2 IRCs, v/s Denis Leandro (BEAUDOIN CT)

VENEZUELA: R. Bolivar, 4770, ltr w/veri statement and time only + large pennant in 5 mo air for no rp, v/s Trina de Bartoli (REDMAN IL)

R. Dif. Venezuela, 4890, no data ltr in 67d for 2 IRCs, SS rpt (MOSMAN IL)

R. Juventud, 4900, f/d green/white cd of teenagers dancing, in 67d for 2 IRCs, SS rpt (MOSMAN IL)

R. Rumbos, 4970, f/d cd showing city highways in Caracas, in 97d sfc for 1 IRC, EE/SS rpt (DeVRIES MA), 25th anniversary cd showing Colonia Tovar, in 118d sfc for MS and SS rpt (DEAN OH)

R. Barquisimeto, 4990, f/d (wrong date) green/white network cd in 27d, 2 IRC, SS rpt (MOSMAN IL)

N. AMERICA

CANADA: BBC (Sackville Relay), 9510, Thames cd in 53d sfc (DAY CA); no fqy, same in 23d air for 1 IRC (MARTI CA)

RCI, 6135, skeds and ltr explaining new RCI QSL policy (MILLER CA) (MARTI CA)

CFRX Toronto, 6070, date/fqy colorful cd in 12d air, no rp (WICKETT MD)

CKZN St. Johns, 6160, date/fqy blue CBC cd w/St. Johns overprint in 12d for 2 US stamps, (JONES MS)

COSTA RICA: R. Capital, 4832, f/d SS ltr + pennant in 16d air for 1 IRC and SS rpt (SMITH FL), same in 26d for 2 IRCs (BEAUDOIN CT) v/s Lilia De Boettger

Faro del Caribe (TIFC), 9645, f/d purple/yellow map cd + pennant in 20d air for 1 IRC EE rpt (WHITE FL)

CUBA: R. Habana, 11760, f/d colored circles cd in 83d air for 1 IRC, EE rpt (KARKI ID); 11930, same cd in 72d air, no rp (ROMANI MI), same in 73d sfc (DAY CA), same in 67d sfc (McINTOSH PA) v/s Maria Montero Triana

DOMINICAN REPUBLIC: RTV Dominicana, 9505, f/d ltr in 19d air for EE/SS rpt, 1 IRC (BIXBY CA), same in 19d for 2 IRC, EE rpt (JERNAKOFF NY) v/s R.A. Font Bernard

GUATEMALA: R. Cultural, 3300, date/fqy "Quetzal" cd in 14d air for 2 IRCs, EE rpt (THOMPSON NM), same in 18d for 2 IRCs (BEAUDOIN CT)

HONDURAS: HRVC, 4820, date/fqy map cd + pennant in 21d air for 2 IRC (WHITE FL), same - pennant in 436 days, v/s Reina Isabel Nunez, for EE rpt and 1 IRC (STRAUMANIS IL) R. Swan, 6185, fqy only EE ltr in 30d for EE/SS rpt, 3 IRCs (BIXBY CA), same in 31d for SS rpt and 1 IRC (STRAUMANIS IL), same in 25 days for SS rpt and 1 IRC (TRAUTSCHOLD WI) v/s Ralph H. Nodarse

MARTINIQUE: ORIF, 3315, date only cd w/beach scene in 22d sfc for 1 IRC, EE rpt (JONES MS). See reproduction at right. →

MEXICO: R. Mexico (XERMX), 9705, f/d SS form ltr in 177d for EE/SS rpt and 1 IRC, v/s Ing. Manuel Cerrillo L. (BIXBY CA)

NETHERLANDS ANTILLES: R. Nederland, 6020, f/d cd "New Lutheran Church" 88d air for 2 IRCs, SS rpt (THOMPSON NM); 6165, f/d "Mint Tower" cd in 13d, no rp (DAY CA), same 22d (WIRRELL MA), "New Lutheran Church" cd in 79d for 2 IRCs (KARKI ID), same, 20d (MILLER CA)



NETHERLANDS ANTILLES (continued):

R. Nederland (continued), 9715, f/d "Mint Tower" cd in 19d air for 2 IRCs (HOFFMAN PA) TWR, 11815, f/d folder cd of "Flamingo Island" in 33d air for 2 IRCs (VAN FOSSEN OH), same in 57d sfc for no rp (McINTOSH PA), f/d antenna cd in 12d air for 2 IRCs + pennant (HOFFMAN PA); 15255, f/d antenna cd in 13d air for 1 IRC (SMITH FL)

TURKS AND CAICOS ISLANDS: R. Station VS18, 4788, no data form ltr w/veri statement only, about 1 yr for 2 IRCs (VECCHIOLA PA), fqy only form ltr in 286d sfc (SMITH TN), time/fqy form ltr in 242d sfc for no rp (SMITH FL). Must be a "variable form" form ltr. bc

UNITED STATES: KGET, 15355, f/d cd w/Bay bridge and cable car in 56d sfc for 10¢ stamp + pennant and bumper sticker (SMITH FL)

VOA, 9670, Capitol cd in 9d (MARTI CA); 11965, same in 7d (VOCKEROTH PA)


WWV, all six fqys, f/d cd "Arapahoe Chief Niwot" in 19d sfc for MS (returned)(VAN FOSSEN OH); 15000, same cd in 2 wks sfc for MS (JERNAKOFF NY)

WWVH, 15000, fqy/date lagoon scene in 11d air, no rp (MARTI CA)

WYFR, 6155, f/d microphone cd in 18d for MS (MARTI CA); 15135, same in 34d sfc, no rp, (McINTOSH PA); 15440, same in 13d sfc, no rp (TRAUTSCHOLD WI)

odds 'n ends

Bet you didn't know that we have a couple of celebrities in our midst. True. Mark Bixby and Andris Straumanis are now bona fide, card-carrying honorary reporters for Radio Swan; authorities please take note and offer them every consideration. But work fast, fellows--those cards are only valid until 1 enero, 1976.



RADIO
SWAN

PRENSA

MARK BIXBY

---REPORTERO HONORARIO---

R. Bixby
Gotento

San Pedro Sula, 3 de SEPTIEMBRE de 1975

A LAS AUTORIDADES:

Rogamos muy atentamente ofrecer facilidades al portador de este CARNET, para el mejor desempeño de sus funciones.

Válido hasta 1º de ENERO de 1976

Firma del Portador.

George Brick sends the following pertinent info:
1. In order to receive Air Mail reply from HCJB, you must include 40¢ in US or Canadian stamps or 2 IRCs from the Americas or 3 IRCs from the rest of the world.
2. No more QSL veris will be issued by RCI until Spring 1976. Program skeds mailed at that time will include a do-it-yourself QSL to be mailed to RCI for verification and return.



No one came up with the correct language last month--in fact, no one even took a shot at it. Rather surprising--I felt sure that the Son of DX Montage would get it, though I didn't expect much from his OM. It was an easy one--Czechoslovakian--courtesy of Mrs. Vera Robertson, and said "Passenger Loading Zone." Try this one and give HAP a hand; it's a lot tougher than last month's, more easily heard on the ECNA than WCNA, but appropriate to the season--and very common (the sign--not the language).

In answer to some questions and comments: 1. Re language of report, in every case where a language other than English is reported to me, that fact is indicated in this report. Since the vast majority of reports are in English, to avoid endless repetition I do not indicate them except in a few instances where a language other than English might seem to be in order, i.e., local Indonesians, Latins, etc. In short, assume the language of the report was English unless stated otherwise.

2. All station addresses reported to me are included here if they differ from the address given in WRTH. For example, see Ulan Bator in lead paragraph.

My local man in blue delivered contributions from Brooks, Pearson, Sanserino, and Van Fossen today. Sorry fellows--next month. There is no way you can mail them on ECNA the 14th and get them here the 15th--and that applies pretty well to WCNA too; Visalia is one of those places where you can't get here from there, so mail early. And have you contributed to the HAP Christmas Tree Fund? Do it now. 73's, *Bill* 10/17/75

Tips and Topics

The Feature Section of SPEEDX

EDITOR: ARTHUR S. GETZEL - 70-29 KISSENA BLVD - FLUSHING - NY 11367

AN END OF AN ERA

By Arthur S. Getzel

In 1967 Radio Canada International inaugurated a new program--the Radio Canada Shortwave Club. Since that time, Ian McFarland and company has been a familiar voice on our shortwave dial. However, all this will come to an end this November on account of the fact of Radio Canada's present financial difficulty.

Again, the proverbial ax has fallen another tree in the forest we call international broadcasting. At another time, I would have told you to write letters and pull together in order to try to save the program. However, this time I shall not tell you to do so for a very simple reason. Mr. McFarland literally told me and the rest of the ANARC convention that writing to Radio Canada's management will produce no results. After all, did we save the English service of Deutsche Welle by this method?

Of course there is only one reason for this amputation--money. According to Mr. McFarland, RCI has been operating on the same budget for the last few years during this time of double digit inflation. Thus, cuts must be made in programming in order to keep the service operational. You may ask why can't they cut another program or even a minor language? This question is to be posed only to the management of Radio Canada who remain obstinate in holding on to their sacred decision.

Worse than this is Radio Canada's new QSL policy. Radio Canada will not issue any QSL's till mid 1976. Furthermore, the QSL's they will eventually issue will, of course, be of a no data type. I could and have forgiven Radio Canada's cut of the shortwave club but to cut out QSL's is totally intolerable. It's bad enough that DXers must cope with minor stations with poor QSL policies; however what are we to expect when a "major" international broadcaster acts like a Radio Moratouia somewhere in outer Mongolia.

Let us hope this attitude does not become a trend in international broadcasting. Cutting out a program will only hurt the listener; however, cutting out QSL's may in the long run also hurt the station that follows such a policy. I will welcome any comments from SPEEDX members concerning this commentary.

THE HISTORY OF RADIO BUDAPEST

Radio broadcasting in Hungary began on the 1st day of December, 1925. Although that was the beginning of regular broadcasting, experimental work had been going on previously for quite some time. There had been quite a serious tradition in the transmitting of music and news bulletins in Hungary. As a matter of fact, it was the first country to make use of the telephonograph, which began operating as early as 1894. The inventor of the telephonograph, the Hungarian Tivadar Puskas later collaborated with Thomas Alva Edison. The telephonograph as its name indicates was used for the transmission of news to subscribers on a local telephone-like line. It also transmitted musical programmes from the fourth floor of an apartment house at 22 Radkoczi street. This house was later to become the first set of studios of Radio Budapest. Actual wireless programme broadcasting began in 1923, when the engineers of the Hungarian Experimental Post Institute first began radio telephonic experiments at the MTI - Hun-

garian Telegraphic Service - located in the heart of Budapest. In 1924 the experimental institute began to attempt reception of foreign broadcasts with a one tube regenerative set. Meanwhile the amateur movement had begun to develop, though it was first occupied with getting the relevant specialized literature and with the reception of foreign stations. In 1925 the construction of PKI 2 kilowatt transmitter began on Csepel Island in Budapest. It was this station which began to transmit regularly. When it first began to put programmes over the air, Radio Budapest had 15,000 subscribers. The majority of them were radio enthusiasts who had built their own receivers and even made the parts themselves. In one year's time the number of subscribers had risen to 50,000.

In 1927 a new Telefunken 3 kilowatt transmitter was built in Csepel and at the same time the daily broadcasts were lengthened from 4 to 10 hours. In that same year the Post Office began building a 20 kilowatt transmitter in Lakihegy. Lakihegy is also on Csepel Island and is a spot chosen for its geographical location for broadcasting all over the country. The transmitter was Telefunken, and the assembly took place under the direction of a technician from the Telefunken firm and was carried out by the staff of the Lakihegy Post Office. The new transmitter began operating on the 7th April, 1928. It had a three stage equipment - a cooling system of 2.5 kw producing the base frequency, a modulator stage and a final stage, which functioned with a water cooling tube of 20 kw. The antenna was built on two 150 meter high steel towers. The building of another transmitter named by the press at that time "The giant of Lakihegy" began in 1933 with a transmitter of 120 kilowatt. The entire manufacture and construction of this transmitter was carried out by the Hungarian Standard Electricity Factory.

This new transmitter began operating in December of 1933 and was officially named Budapest One. This set was seven staged, with a modified Heising system modulation with 120 kilowatt tubes, driven into a push, pull through system of stages to the final amplifier stage. The new antenna was a tower of the Blow-Knox system which in proportion and method was far ahead of countries which were richer and more developed than Hungary, and at that time it was the highest steel construction on earth, reaching an altitude of 314 meters. As a point of interest it should be mentioned that the 480 ton weight of the tower was supported against the wind by a 9 centimetre thick porcelain wall insulator! The antenna was very good from the electrical point of view, because its height surpassed half of the transmitted wavelengths. This ensured transmission without fading to the entire country, day and night. The 20 kilowatt equipment was modernized and began transmitting the programmes of Radio Budapest Two. The shortwave station at Szekesfehervar began broadcasting in the thirties and transmitted overseas programs.

Unfortunately the Second World War completely demolished the equipment of the Hungarian Radio. The withdrawing Nazi troops not only blew up installations but in many cases dismantled the equipment, so that by the end of the war the country was without any radio station whatsoever. The staff of the Post Office did heroic work in reconstructing the stations. One part of the equipment which had been carried off was found on the western frontier of the country, and Radio Budapest was first heard again on 1st May, 1945. By the end of 1948, the Hungarian Standard Factory had built the new 135 kilowatt equipment which has been functioning without interruption ever since. The 314 meter antenna tower was rebuilt and Budapest Two was reconstructed at its new location in Szolnok, also with a capacity of 135 kilowatts. This transmitter is also used for broadcasting to foreign countries on mediumwave.

Radio Budapest's two shortwave transmitters of 100 kw each and three transmitters of 15 kw are broadcasting at the present time on the 13, 16, 19, 25, 30.5, 41, 49, and 50 meterbands in six languages - English, Spanish, German, Italian, Greek and Turkish. In 1974 two new 250 kilowatt shortwave transmitters were put into operation near the town of Jaszbereny, equipped with up-to-date shortwave antennae directed to North America, Asia, Australia, and New Zealand, for the overseas services. In addition to the new Jaszbereny shortwave outlet, they have also modernized the antennae of the old 100 kilowatt stations and now they use a rotary long-periodic antennae for their external services.

The Hungarian radio today broadcasts programs for more than 2,500,000 subscribers in Hungary from 26 modern studios. The studios are equiped

almost entirely with products of modern Hungarian industry. The Hungarian Radio has link-ups with international programmes and participates in the work of the UNESCO radio section; has regular exchanges with East and West and has very good contacts with radio enthusiasts from clubs and organizations all over the world.

On the initiative of DXers in 1965, Radio Budapest formed a international DXers organization, the Radio Budapest Shortwave Club, which by now has nearly 7000 members from all continents acting as official monitors of Radio Budapest and maintaining permanent contact with the station.

This information comes directly from the RBSWC.

OUR VISIT TO CBC IN SACKVILLE

By John Vockeroth

My wife and I took a 10 day trip in May visiting the Canadian Provinces of New Brunswick, Nova Scotia and Prince Edward Island. One of the highlights of the trip was a visit to CBC-BCI Antenna Farm and Transmitter site in Sackville, New Brunswick. Sackville is 30 miles west of Moncton, the nearest large cit. Sackville has a population of 2000 and only one large industry.

Mr Alan Daily, a transmitter technician took us on our escorted tour. Mr. Daily gave us a very informative and interesting tour. He showed us first the manual 50 kw transmitters and antenna switches. One of the transmitters was broadcasting to Africa on 9455. We were next shown the master control room which is fully automated and also controls the 250 kw transmitters. Operations and programs are computer controlled.

All programs are made in Montreal. They are sent to Sackville by microwave to Moncton and then sent by land to the transmitter site. Recently they have sent programs directly to Sackville but problems have occurred. The reflections from the snow caused considerable problems. They are still working out the bugs. Only the DW programs are made at another transmitter site. The opening BBC announcement is patched into their relays.

I left Sackville on a rainy afternoon taking pictures and getting soaked as only a DXer would do and pointed our car toward Moncton our next stop. We left Mr. Daily dreaming of his opportunity to join the TV section in the future.

THE CQ SHORTWAVE LISTENER HANDBOOK: A REVIEW

By Richard Lewis

The CQ Shortwave Listener Handbook written by John Schaltz is one of the most technical books on shortwave listening I have ever read. Here is everything you ever wanted to know on the technical aspects of the hobby. If you want to construct a multicoupler or if you want general information on how to improve your listening post this is the book for you.

The book, based on information taken from the authors technical knowledge gained from working in professional monitoring stations is a very comprehensive text from start to finish. It will give you the type of information to pull in more DX than ever before.

There is one disadvantage in regards to the text which is very apparent. That is the section on DX clubs. This information is at least five or six years out of date. The shortwave listener clubs which were founded within the last few years are not included and the clubs which were established at that time have the addresses which were the addresses five years ago. However, the author advises the reader to look in any edition of the WRPB for any current addresses.

The book costs \$5.00 and is available from the publisher: CQ Magazine, 15 Vanderventer Ave, Port Washington, NY 11050 or your local ham distributor.

By Stan Rogacki

When a SWler or DXer purchases or homebrews an integrated circuit or transistorized device for use with his station receiver, often it can work on any voltage between 9 and 15 volts DC. Usually, a decision must be made as to how the device will be powered, either by a power supply or batteries. If the accessory is to be mounted internally, problems pop up concerning shutting off the battery, changing it regularly, and finding space for it or the added power supply. An easy and inexpensive way to power these devices is by tapping the power from a B+ wire from your tube receiver. Since the current needed is very small, receiver performance will not be affected. Here's how:

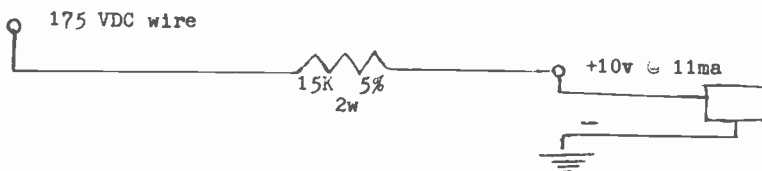
First, check your schematic or consult a tube manual for a high voltage connection on one of the tube bases, just about any one will do. In the author's receiver, 175 volts are available, so we will use this voltage in an example. Suppose you want to power a transistorized preamp which draws 11 milliamps at 10 volts. If we tap the 175 volt line, we will need a voltage drop of 165 volts. A resistor is needed to "soak up" this excess voltage. Using Ohm's Law:

$$\begin{aligned} \text{Volts} &= \text{Amps} \times \text{Resistance} \\ 165 \text{ Volts} &= .011 \times R \text{ (ohms)} \\ 15,000 &= \text{ohms} \end{aligned}$$

A resistance of 15K ohms is needed. Since power is being dissipated, a proper wattage resistor must be chosen so that the resistor will not melt! Using Ohm's Law again:

$$\begin{aligned} \text{Power} &= \text{Volts} \times \text{Amps} \\ &= 165\text{V} \times .011\text{A} \\ &= 1.8 \text{ Watts} \end{aligned}$$

Therefore, a 15K, 2 watt resistor would be adequate. Five percent tolerance is recommended. In case an "oddball" resistance or wattage value is needed, consult an electronics manual or a neighborhood serviceman or radio amateur for hints on increasing power handling capability, series and parallel hookup, etc. The receiver chassis is the negative pole or ground for the device. See figure below:



Good power supplies cost a lot of money and batteries eventually die, so why not give this neat, little trick a try?

That's it for this month. I still don't know how I managed to do my column this month. A month in which I did at least ten things at the same time--and don't ask me what.

In the past month contributions to my column has surprisingly decreased. I know its probably because all you folks are really trying hard to get that good winter DX out there. However, if you could just spare a few minutes away from your receiver and write me an article, I would be most appreciative as well as the rest of SPEEDX.

A personal note this month goes out to Stewart Freed of Montreal (hi) who decided to take my advice at the ANARC convention and join SPEEDX. By the way, Stew was one of the co-hosts at the ANARC convention last summer in Montreal. Stew, I hope you will be an active supporter of SPEEDX and enjoy a long tenure with our club. Have a nice Turkey and I remain, Best wishes and 73's, *Stan*

NOVEMBER CONTRIBUTORS PAGE

Each contributors name is preceded by a number. This number indicates how many SPEEDX columns a specific reporter contributed to this month. Credits for columns/sections other than SWBC, QSL and UTE are not listed here, they are recorded separately by the Membership Chairman, Art Glover.

1 ANDERSON, JULIUS	NY...SX-133	3 LOVETT, BRAD	OH...SX-190
4 BARBER, LANCE	CAN...SX-190	2 MACCOY, DON	AZ....R-392
1 BARON, BRUCE	PA.....R4C	2 MAC LENNAN, KEN.	ONT.....??
1 BEAUDOIN, ROBERT	CT....R-388	5 MARTI, WALTER	CA...DX-160
6 BENJAMIN, LORENZO	CA...SX-190	1 MAYER, ALAN	IL....SPR-4
4 BERNSTEIN, ROGER	GA...DX-160	2 MC INTOSH, RANDY	PA...DX-160
3 BETHGE, JANE	MO...SW-717	4 MERCADO, MARJO	CA.....R4
5 BIXBY, MARK	CA...HA-225	3 MIKIEJEWSKI, STAN.	MN...D-7000
6 BODELL, BOB	OR....SPR-4	3 MILLER, AL	OH...HRO-500
2 BOWEN, PETER	NS.CAN..EDY-750	5 MILLER, BILL	CA..YORK-21
1 BOUCHY, J.C.	OH....SPR-4	3 MOSMAN, JOHN	IL....SW-4A
1 BOYCE, DENNIS	VA..GE-PORT	3 NAYLOR, SPENCE	CA...HQ-180
3 BRICK, GEORGE	MA....NC-88	1 OISSION, ERIC	CT....SPR-4
4 BROOKS, ALAN	CT..DX-150A	4 PATTERSON, DON	NC...XCR-30
1 BURTON, BOB	OH....R-391	1 PEARSON, BILL	PA...DX-160
2 CAWTHORNE, CEDRIC	ENG...GR-100	2 PIMBETT, NIGEL	AIB..DX-150A
3 CHABAK, MIKE	CO...HA-150B	2 REDMAN, RON	IL...P-1660
3 CLEVELAND, BILL	CA...SPR-4	5 ROJEWski, DON	WA...DX-160
2 CRAWFORD, WM.	SCOT..TR-6002	2 ROMANI, DAVE	MI..DX-150A
3 DAWSON, ARCH	CA....SPR-4	4 SCHWARTZ, RICHARD	DE...SX-190
1 DAY, EDWARD	CA...SX-190	2 SCOTT, ILOYD	FL..FRR-502
1 DEAN, DENNIS	OH..HQ-180A	3 SHAW, ED	CA...R-390A
6 DEVRIES, LINDA	MA...DX-160	3 SHAW, STANFORD	CA....SPR-4
1 DOLYAK, EVELYN	IA...HA-700	6 SMITH, TOM	FL...XCR-30
2 DURANT, HENRY	MD....SPR-4	1 SMITH, WADE	MA...SX-190
3 EARHART, KEN	PA...SX-190	2 SMITH, WOODY	TN..TRANS-0
1 FLEMING, KEVIN	NY..DX-150A	3 SNYDER, DOUG	CA....SPR-4
3 FRENCH, BOB	MD....S-108	3 STRAUMANIS, ANDRIS	IL...SW-717
1 GAVARAS, TOM	MN...HQ-180	1 SZOT, KEVIN	CA...R-390
1 GREEN, DAJE	UT.....??	7 TALBOT, LARRY	WI...SB-313
1 GRIDER, DON	MD....SPR-4	2 TANNENWALD, LEON	NY.NORMEAD
2 HANSEN, GEO.	AZ....SPR-4	1 TESTA, FRANK & KAY	MA...D-150
2 HARDING, BARRY	CA..DX-150A	4 THOMPSON, GLENN	NM..HQ-145A
3 HAUSER, GLENN	OK...HO-160	2 TRAUTSCHOLD, JOHN	WI...SB-310
2 HERBOLD, AGNES	CA...SX-190	1 TRUBEE, BILL	HI....SPR-4
2 HICKMAN, MEL	OR...A-2515	2 VAN FOSSEN, JEFF	OH...DX-160
4 HOFFMAN, CHAS.	PA...DX-160	5 VECCHIOIA, JIM	PA.....R4C
6 JACOBSON, JOE.	IL....SPR-4	1 VILARO, NARCISO	PR..CRF5100
1 JOHNSON, DONALD C.	CA...SPR-4	1 VOCKEROTH, JOHN	PA...SX-190
2 JAKUBIAK, DAVID	MI..TRANS-0	2 VOGEL, WENDELL	PA...SX-122
5 JERNAKOFF, PETER	NY...SB-313	1 VOKES, ROBERT	TX...XCR-30
1 JESSEN, WILBUR	OR...R-530	2 WALTERS, JOHN	NJ...R-1530
3 JOHNSTONE, JIM.	CA...OR-666	1 WASHBURN, CHAS.	ME...SX-130
1 JOLLEY, JERRY	WY.....??	3 WHITE, JOHN	FL....SPR-4
5 JONES, JACK	MS..DX-150A	1 WHITEHEAD, JIM	MA...SX-190
3 JUNOUA, GIB	JAPAN....R4C	1 WICKETT, BOB	MD...SB-310
1 KAUFMAN, MALCOIM	NY...SW-4A	4 WILSON, BOB	IL...XCR-30
1 KARKI, KEN.	ID..DX-150A	6 WIRREIL, BOB	MA...SX-110
1 KERRIGAN, PATRICK	IL...HA-230	1 WOOD, RICHARD	NY...R-390A
1 KIYOMIYA, T.	JAPAN...SPR-4	5 YAJKO, BOB	PA....SPR-4
4 KOIZUMI, H.	JAPAN..9R5-9DS	1 YOST, SCOTT	MI...FT-101
1 KUMMER, MARVIN	KY...D-7000	4 ZEIGLER, GARY	MI...XCR-30
3 LANCE, KEN.	AZ...SX-190	2 ZELASKO, LEO	IN....SPR-4
2 LAMES, ALAN	TX..DX-150A	3 ZILMER, BOB	WI...SPR-4
4 LEAMY, ROBB.	OH...HQ-180	1 ZIMAROWSKI, MARK	MA...DX-150
1 LEVIN, JAY	NJ...DX-160	2 ZINK, GEO.	CA....SPR-4
1 GETZEL, ART	NY..HA-600A		

This month we welcome 10 first time reporters, they are as follows: Lance Barber, Robert Beaudoin, J.C. Bouchy, Cedric Cawthorne, Linda DeVries, George Hansen, Jerry Jolley, Spencer Naylor, William Pearson and Narciso Vilaro. We hope to see your names often in SPEEDX. A big thank you to 113 contributors to SPEEDX this month.

73. "Ellie"

THE OFFICIAL DX MAGAZINE PUBLISHED MONTHLY BY SPEEDX

BOARD OF DIRECTORS

PRESIDENT.....JIM WHITEHEAD
 MEMBERS.....ALAN BROOKS, STEVE D'ADOLF
 DOUG SNYDER, DON JOHNSON
 MANAGING EDITOR.....OLIVER ELLSWORTH
 BUSINESS MANAGER/PUBLISHER/TREASURER.....DON JOHNSON
 PROJECTS COORDINATOR.....DOUG SNYDER
 MEMBERSHIP CHAIRMAN.....ART GLOVER
 SPEEDXGRAM EDITOR/PUBLISHER.....JOHN TRAUTSCHOLD

SUBSCRIPTION RATES PER YEAR

FIRST CLASS TO USA/CANADA/MEXICO.....\$12.00
 AO (AIRMAIL) TO SOUTH AMERICA/EUROPE..... 20.50
 AO (AIRMAIL) TO ASIA/AFRICA/OCEANIA..... 23.00
 FIRST CLASS WORLDWIDE (OUTSIDE USA/CANADA/MEXICO)..... 14.00
 SAMPLE COPY WORLDWIDE..... 6 IRC's or 1.00
 (MAKE ALL MONIES PAYABLE TO SPEEDX IN US FUNDS)

Permission is granted to broadcast, publish, or reproduce any material contained herein (excepting items which state that they appear by permission from other sources) providing credit is given to: SPEEDX, P. O. BOX "E", ELSINORE, CALIFORNIA USA and to the author or contributor when stated.

INDEX

KEYNOTES.....OLIVER ELLSWORTH 2
 DX MONTAGE.....ALAN BROOKS 4
 TECHNICAL TOPICS.....JOHN KOLB 6
 HAPPENINGS.....TED POLING 7
 SWBC WESTERN HEMISPHERE.....JIM WHITEHEAD 8
 EUROPE AFRICA.....BOB BUTTERFIELD 15
 ASIA OCEANIA.....BOB BODELL 22
 STATION SCHEDULES.....MEL HICKMAN 29
 UTILITY SECTION.....KEN COMPTON 31
 QSL SECTION.....BILL CLEVELAND 36
 TIPS AND TOPICS.....ART GETZEL 43
 CONTRIBUTORS PAGE.....OLIVER ELLSWORTH 47

S P E E D X
 P O BOX E
 ELSINORE CALIFORNIA
 9 2 3 3 0 U S A

U.S. POSTAGE PAID
 FIRST CLASS MAIL
 PERMIT NUMBER 36
 ELSINORE CA 92330

FIRST CLASS MAIL

ADDRESS CORRECTION REQUESTED