

A

МОСКВА

GUIDE



TO

РАДИО

SOVIET



BROADCASTING

written and compiled by:

Robert Butterfield and Doug Snyder

a publication of:

**SPEEDX, P.O. Box E, Elsinore, California, 92330,
U.S.A.**

INTRODUCTION

It soon becomes obvious to the DXer new to the scene that though large broadcasting organizations are relatively easy to receive, they are often not the easiest to obtain "complete" QSL verifications from. By complete we mean a reply that includes frequency, date, time, and transmitter site (if more than one are used). Sometimes it becomes even difficult to obtain any sort of a reply, complete or not. The Soviet broadcasting system is a case in point. At times complete QSLs have been relatively easy to obtain, at other times almost impossible to come by. Because of this oscillating QSL policy SPEEDX has put together this booklet to give the DXer an edge, though somewhat small, an edge none the less, in trying to elicit a complete verification.

Research has been extensive and as up to date as possible. We have tried to include information on the various problems that avail themselves to those DXing the Soviet Union such as language and station identification, addresses, etc. A section of this pamphlet contains a by-frequency list of Soviet sites so as to put all available information as to location in one source for the DXer. It can be noted that for those frequencies under 5950 kHz (i.e. below the major international bands) there is substantially more accuracy than for those above. These lower frequencies are generally used for regional "home" coverage and are thereby less likely to change over a period of time as compared to those frequencies/sites in the international bands above 5950 kHz. Please note that more than one station may be on a given frequency below 5950 kHz and it is thus up to the DXer himself to narrow down the possibilities through identification announcements, transmission times, languages, etc., to discover the station actually being listened to. On those frequencies above 5950 kHz, multiple transmission sites on the same frequency, either in the same or different language, at the same time, are a common occurrence due to different target areas. The accuracy of the list here is limited, especially for external service broadcasts, because of the frequently changing propagation conditions and interference problems. Its usefulness lies in the fact that it brings the resources of several publications together and helps to narrow down the possibilities that are present.

As is probably evident, any short-wave broadcast originating in the USSR could conceivably come from any of the known transmitting sites listed elsewhere. Realistically, however, it is possible to pinpoint some frequencies as per sites and to narrow down others that are questionable to a workable few.

SOVIET GEOGRAPHY AND TRANSMITTER SITES

The Union of Soviet Socialist Republics is the largest country in the world. It occupies one-seventh of the land area of the globe. Its territory stretches almost 10000 kilometers east to west, and nearly 5000 kilometers north to south, occupying eleven different time zones. The USSR is made up of fifteen republics (see map for a list of republics - for the purposes of transmitter location the RSFSR has been divided into European and Asian sections). All republics are Soviet states and have their own constitution and the right to secede from the USSR. Some union republics include Autonomous Soviet Socialist Republics (ASSR), Autonomous Regions, and National Areas.

The ASSR represents the highest form of autonomy. In the USSR there are twenty autonomous republics, sixteen of them are in the RSFSR, two in the Georgian SSR, and one each in the Azerbaijan SSR and Uzbek SSR. Autonomous republics were formed to insure the independence of the separate national peoples of the Soviet Union. There are nearly 130 different nationalities in the USSR. Autonomous Regions are a step below autonomous republics. They enjoy administrative autonomy, but do not have power in the Supreme Soviet (congress). There are eight Autonomous Regions in the USSR, five are located in the RSFSR, and one each in the Azerbaijan SSR, Georgian SSR, and Tadzhik SSR. A National Area constitutes an administrative and territorial unit insuring the autonomy of the least numerous nationalities in the USSR. (The above taken from information supplied by Radio Moscow.)

The map accompanying this booklet shows the location of all known Soviet short-wave transmitting sites in their respective republics. This map should provide a handy reference guide and DX tool.

THE SOVIET SYSTEM OF BROADCASTING

Soviet broadcasting activities are formally under control of the State Committee for Broadcasting and Television, which is responsible to the Council of Ministers. In each republic there is also a Committee for Broadcasting and Television. Party members hold key positions on the committees.

The Soviet radio network covers even the remotest regions of the vast USSR, a difficult feat to say the least. Wired receivers play an important part in the reception network. All receivers, regardless of type, must be licensed for a small fee.

SOVIET HOME SERVICE BROADCASTING

The home services based in Moscow are divided into three separate programs:

First Program: A general purpose style program designed for coverage throughout the Soviet Union. News is supplied by the TASS news agency. This program is also relayed by local stations and Republican First Programs. Because of the wide time differences the Moscow First Program is divided into four editions which are listed here in chronological order; Edition 1 to the European USSR, Turkmenia, Sverdlovsk and Tyumen' oblasts, 0200-2200; Edition 1C to Western Siberia, Central Asia, and Kazakhstan, 2300-1900; Edition 1B to Eastern Siberia, 2100-1700; and Edition 1A to the Far East, 1900-1500. Relayed on LW, MW, SW and FM.

Second Program: The "Mayak" (Lighthouse or Beacon) program. Operating 24 hours a day. It is a musical program intended for all union coverage. On the hour and half hour are 5-10 minutes of news, reports, and/or interviews preceded by the interval signal. Live sport broadcasts are also sometimes transmitted. Relayed by many local stations.

Third Program: A mainly musical and literary program. Transmitted to the European USSR, Novosibirsk Area and Kazakhstan. On the air 0600-2000. Relayed by local outlets.

The home services other than Moscow, called Republican Programs, divided into two sections:

Republican First Program: This program consists of, in most cases, relays of Moscow's "First Program", plus the republic's own programs in Russian and the main language(s) of the republic concerned. In the Baltic area, separate Russian and local language programs are broadcast. Relayed on LW, MW, SW and FM.

Republican Second Program: Most republics have a second program in the main language of the republic. Broadcasting times vary from a few hours to most of the day. These programs are usually specially named and this is the only identification used. Relayed as is the first program. (Other local programs are produced for district areas in local languages and from local transmitters. City programs are locally produced evening programs for some major cities.)

(from the WRTVH)

SOVIET EXTERNAL SERVICE BROADCASTING

The external services based in Moscow can be separated into four different sections:

Radio Moscow External Service: "Radio Moscow" broadcasts on a 24 hour basis to most areas of the globe in Russian and other languages. Different languages may be broadcast on the same frequency, at the same time, from different regions of the USSR.

Radio Station Peace and Progress: This station broadcasts over the facilities of Radio Moscow and is jointly sponsored by the following organizations; Union of Soviet Journalists, APN News Agency, Soviet Society for Cultural Ties with Foreign Countries, Soviet Writers' Union, Soviet Composers' Union, National Society of Knowledge, Soviet Peace Committee, Soviet Women's Committee, and the Committee of Youth Organizations.

Radiostantsiya Rodina: The "Voice of the Soviet Homeland", also broadcast over the facilities of Radio Moscow, is sponsored by the Soviet Committee for Cultural Relations with Compatriots Abroad. Broadcasts in Russian.

Fifth Program: This Russian language program is intended for compatriots abroad and for Soviet seamen. The service includes a 24 hour relay of Radio Moscow's Home Service Second Program, "Mayak". Some frequencies are intended for home audiences and some for those abroad. It is difficult to differentiate between the two.
(BBC MS)

Other external services:

Regional External Services: Broadcasts from various republics in the USSR and are meant to be complimentary to those external services broadcast over the facilities of Radio Moscow. Fourteen of the fifteen republics have regional short-wave broadcasting facilities, though the transmitters used may or may not be local ones. The only exception is the Moldavian SSR. Of the fourteen broadcasting on short-wave, eleven have an external service intended for listenership outside the republic. The remaining three republics, Kazakh SSR, Kirghiz SSR, and Turkmen SSR, have only home service broadcasts on short-wave.

Radiostantsiya Tikhy Okean: "Radiostation Pacific Ocean" is broadcast from various regions of the USSR and originates from the Vladivostok studio. Programming is in Russian with an occasional English language lesson. See section on Broadcasts to Soviet Seamen for other external transmissions to Soviet seafarers.

HINTS ON RUSSIAN LANGUAGE IDENTIFICATION

by Richard E. Wood

Russian words, like English, take strong stress on a particular syllable while the other syllables are weak and lose their full quality. For example, the Russian "o" is a broad, strong sound almost like "o-a" when under stress. However, when unstressed it is a slurred "a". Likewise, the stressed "a" is a pure "ah", when unstressed it is a vague "uh". Hence, the most important thing to know about a Russian name is which syllable bears the stress. The spelling and normal transliteration in English is no help here, as the stress is not marked. However, it has been added on the following typical examples:

Vladivostók	Moskvá	Ríga	Petrozavódsck
Khabárovsk	Kíyev	Tállin	Vilnyús
Novosibírsck	Alma-Atá	Tashként	Magadáń
		Yúzhno-Sakhalínsck	

In standard transliteration, "kh" stands for the guttural sound of Scottish Loch or Spanish Moxico, "zh" is the "g" of garage or the "z" of azure. Under certain circumstances, stressed "e" stands for "yo", i.e. Khrushchev is actually "yov", Kishinev is Kishinyov, etc. Final "d" is "t" (as in German), "g" is "k", "v" is "f", etc. Remember, the unstressed syllables drop their full quality, you will not hear three full vowels in the ending of "slushayette".

SOVIET STATION IDENTIFICATION

by Richard E. Wood

Most Soviet stations relay Moscow on the hour. Local identification is more likely to be heard on the half-hour, but the best time of all is between five minutes before and right up to the hour when the time signal is sounded. Local identification can be heard frequently alternating Russian and then the particular local language (Armenian, Kazakh, etc.). Some republics use a single bi-lingual broadcasting network on the same frequencies (Baku, Azerbaijan SSR is frequently noted bi-lingually), while others tend to use separate frequencies for separate languages (e.g. Tashkent, Uzbek SSR). Names of capital cities are generally similar or identical in both languages, but Alma-Ata in Kazakh is Almaty, Kishinev in Moldavian is Chisinau (Kishinów).

Of the Soviet regional languages: Ukrainian and Belorussian sound like Russian; Estonian sounds like Finnish, Latvian and Lithuanian sound similar to each other, but unlike anything else; Moldavian sounds like Romanian (i.e. similar to Italian); Armenian sounds distinctive, but a little like Persian; Georgian sounds unique; Tadjik sounds like Persian; the remaining five languages of the five remaining republics Turkmen SSR, Uzbek SSR, Kirghiz SSR, Kazakh SSR, and Azerbaijan SSR sound like Turkish, but tend to stress the last syllable.

Russian language identification include: "Govorit ..." (plus name of city in nominative case); "Vyslúshayete ..." (plus name in accusative, which often changes the ending, thus Moskvá becomes Moskvu).

SOVIET DXING

As of this writing, Radio Moscow is now on the positive side of the scale in one possibly obtaining "complete" QSL verifications. How long this will last is a matter of question due to economic considerations and the like. A considerable amount of speculation has been written recently on the accuracy of frequency/site lists and their subsequent value; and also, interestingly enough, on the correctness of actual QSL site verifications received.

It should be obvious that no one can expect that every frequency/site listed in a given publication is correct. As has been mentioned, for the lower frequencies, the accuracy of such lists is increased substantially. Considerable difficulty develops in the higher frequencies. In general, it is advised that one take each frequency list as a guide which has varying degrees of usefulness, from poor to excellent, in helping one determine what site is being listened to.

The IFRB listings are seen by a number of DXers as the best available information. Still, even this information is dated by the time it reaches the individual. Where the IFRB and the actual QSL site listings agree, there are many who consider these to be "correct" in most cases, that is, being the best available information. Even this, though, provides occasional difficulties. One recognizes that schedules frequently change due to interference, and many other conditions. The BBC Monitoring Service, which is used extensively in this Guide, is another highly respective source. Even they point out the difficulties in distinguishing what comes from where. Other sources such as the "RTVH" also provide much useful information.

Another problem encountered is the correctness of actual QSL verifications in relation to the sites as listed on the card or letter. There are instances where the site listed on a verification is definitely incorrect. Thus one cannot always be sure that the site listed is in fact the site heard. An opinion which has gained a following in recent times is that though the site may not be the exact one, it is at least in the general area of the actual one. In general, the state of the art as it is now would make it necessary for one to accept the site listed as being de facto correct, except in the known and obvious cases of being false. One will notice that many of those QSLs listed in the frequency/site list following will differ from the listed sites, more so for the higher frequencies.

In reporting to Soviet stations there are a few hints which may prove helpful. For reports to Radio Moscow External Service broadcasts it is advisable to reply to the service concerned (i.e. North American, African, etc.). Request politely that the transmitter site be mentioned in the verification. Mention this point two or three times in your report, but don't over-do it.

In reporting regional based broadcasts it is best to send reports to the studio that originated the broadcast. For regional relays of the Radio Moscow Home Service, it is best to report to Moscow itself, and hope that the site will be given as requested.

One will have the best luck in reporting English language broadcasts. Unfortunately this is not possible in many instances such as the home services where reports of Russian language programs in Russian is the best chance for a verification (see chart for current QSL policies of Home Services). Taped reports cannot be used as tapes are not allowed to be mailed to the USSR. Remember, Radio Moscow is not in the QSL report forwarding business.

BROADCASTS TO SOVIET SEAMEN

External service transmissions for Soviet seamen come in several "programs" which are separate and originate from different studios. Radio Kaliningrad is broadcast on 1385 kHz every Sunday in Russian from 0001-0100 GMT (duration varies) to Soviet fisherman in the North Atlantic. Radio Leninrad is broadcast on short-wave every Friday as per schedule (see chart).

Radiostantsiya Atlantika (Radio Station Atlantic) is broadcast over the facilities of Radio Riga on 5935, 1484, 1070 kHz, everday except Tuesdays and Fridays in Russian from 1200-1300 (and irregularly from 1000-1100 GMT). Radiostantsiya Tikhy Okean (Radio Station Pacific Ocean) is broadcast from studios in Vladivostok as the regional external broadcast from that studio as per the schedule listed (see chart).

THE SOVIET UNION: PROPAGATION AND MOST PROBABLE FREQUENCIES by Doug Snyder

What with the extraordinary amount of transmitter sites in the Soviet Union, how does one determine where a particular transmission is being broadcast from? It has been determined over a period of several years that even Radio Moscow does not rate 100% for accuracy on their site listing on QSLs. In general, it can be said that the site listed is the actual one, but there have been discrepancies caught in the past.

By becoming familiar with the geography of the USSR with respect to North America, plus the ability to calculate or estimate sunset/sunrise times, and knowing the approximate times in which Radio Moscow (or other services) would normally beam to a certain region (West Coast N.A., Africa, etc.) and keeping aware of the current propagation conditions, it is possible to determine, sometimes with good accuracy, where the transmission is originating from.

This brief article will try to explain some basic propagation principles common to reception of the USSR stations plus the inclusion of the charts showing the most probable frequencies of reception on the west and east coasts of North America. The charts should be used as a guide only; the actual useable frequencies from a certain area may vary day-to-day depending on propagation conditions; however, the frequencies shown are the most reliable in terms of that particular time block.

Low frequency signals (below approximately 7-8 MHz) will not normally propagate when there is an appreciable amount of daylight between receiver and transmitter. By "an appreciable amount" it is meant an hour or two after sunrise and before sunset in either location or between the two locales. High frequency signals (above approximately 11 MHz) will not normally propagate when there is an appreciable amount of darkness due to the weakened ionosphere allowing the signals to penetrate through. Of course, there are days when these conditions are more or less flexible and the 31 meter band is a good middle ground spot to determine these conditions.

To get to the west coast of North America, signals from the European and Siberian regions of the USSR have to travel either over the North Pole or through the "Auroral Zone" (a large area around the pole in which the Northern Lights occur). Only on days when the Earth's magnetic field is quiet can reception be expected to occur with any degree of quality, and even then, other propagation conditions have to be good. Signals from the Far Eastern portion of the USSR arrive on the west coast with great regularity.

On the east coast, conditions differ somewhat. Signals from the European region of the USSR are not greatly affected by the auroral zone and therefore, a good portion of the transmissions beamed to the east coast originate in the European area, while programs beamed to the west coast originate from the Far East. For the east coast listener, the Siberian and Far East regions suffer from polar fade, but they have the advantage over a west coast listener due to the larger number of sites in the European region.

If you are, or want to become, a serious Russian station DXer, keep a log of what you hear from the USSR, noting items such as time fade-in/out, sign-on/off, language (if possible), in addition to the usual log items. You may not at first be able to determine from where it is being broadcast from, but if you keep track of what is reported and what is heard by you, you will become quite good at pinning the sites down. All that is left to do then, is to report your findings to SPBEDX, the club that cares about you.

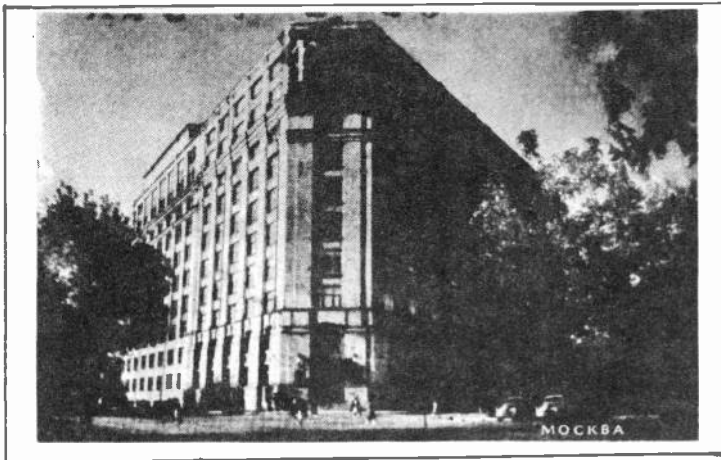
WCNA: Low sunspot activity: GMT Shown in Time Blocks

SEASON	0000-0400			0400-0800			0800-1200			1200-1600			1600-2000			2000-2400		
	EU	SI	FE	EU	SI	FE	EU	SI	FE	EU	SI	FE	EU	SI	FE	EU	SI	FE
Winter	6	11	15	6	11	9	4	9	6	6	9	6	11	11	9	11	9	11
Spring/Fall	7	9	15	6	11	9	6	9	6	9	11	6	11	15	9	9	11	15
Summer	11	11	15	9	11	15	9	9	9	11	11	9	15	15	11	11	11	15

ECNA: Low sunspot activity: GMT Shown in Time Blocks

SEASON	0000-0400			0400-0800			0800-1200			1200-1600			1600-2000			2000-2400		
	EU	SI	FE	EU	SI	FE	EU	SI	FE	EU	SI	FE	EU	SI	FE	EU	SI	FE
Winter	6	6	11	4	6	9	4	6	7	11	11	9	15	15	9	9	11	15
Spring/Fall	9	9	11	6	6	6	6	6	6	11	15	6	15	15	9	11	11	11
Summer	11	9	15	9	9	11	9	7	9	11	15	11	15	15	15	15	15	15

EU = European USSR; SI = Siberian USSR; FE = Far East USSR
Frequencies in MHz



RADIO MOSCOW BUILDING



RADIO MOSCOW ANNOUNCERS (left to right): Terry Kapustin, Sergei Rudin, Annabelle Bucar, the ever helpful Eugenia Stepanova in the center, Annette Setyaeva, Lucy Pravdina, and Joe Adamov.

REGIONAL CENTRE BROADCASTING CHART

To help you use the chart of Soviet Regional Broadcasting Centres, a few words of explanation are in order: The last column for "Home Service Transmitters" shows the frequencies used for such home service broadcasts. Where no short-wave frequencies are known, medium and long wave frequencies are given. Those short-wave frequencies listed in this column are those known to be actually located in the republic and are used for local broadcasts. The "QSL Policy" column shows QSLs that have been actually received recently, in what form, and if a Russian language report was used.

The "transmitter" column contains information on Regional external service frequencies. For those where an "x" occurs in the "own" sub-column, then for those frequencies shown, the transmitter site (or sites) is (are) located within the republic listed. Where an "x" appears in the "RM" (Radio Moscow) column, then those frequencies listed are broadcast over the facilities of Radio Moscow and thus may come from anywhere within the USSR. The remainder of the chart pertains to additional information on the external services.

SOVIET REGIONAL BROADCAST CENTRES

Republic	Studio	Beam	Language	Times	Days	Frequencies	xmtr		QSL Policy	HS Amtrs
							Own	RM		
1 Armenian SSR	Yerevan	NA/SA	Armenian	0300-0325	Su/W/ Th/Sa	11690, 9735, 9610, 9540	-	x	Card in EE	7175, 4990, 4810, 4040
		NA/SA	English	0325-0330	Su/W/ Th/Sa	11690, 9735, 9610, 9540	-	x		
		ME/NE	Armenian	0600-0730	Su	863	x	-		
		EUR	Armenian	0800-0850	Su	15305, 15190, 12035	x	-		
		EUR	French	0850-0900	Su	15305, 15190, 12035	x	-		
		ME	Azerbaij.	1300-1400	D	4990, 863	x	-		
		ME	Kurdish	1400-1500	D	4990, 863	x	-		
		ARAB	Arabic	1500-1530	D	6120, 4990	x	-		
		ME/NE	Armenian	1530-1630	D	6120, 4990, 863	x	-		
		ME	Kurdish	1730-1800	D	4990, 863	x	-		
		ME	Armenian	1800-1830	D	6120, 4990	x	-		
ME/NE	Arabic	1830-1900	D	6120, 4990, 1313	x	-				
ME/NE	Armenian	1900-2100	D	6120, 4990, 863	x	-				
EUR	Armenian	2130-2200	D	6120, 4990	x	-				
2 Azerbaijan SSR	Baku	ME/NE	Persian	1300-1330	D	6135, 6110	x	-	Card in EE	6135, 4958, 4785
		ME/NE	Azerbaij.	1330-1400	D	" "	-	-		
		ME/NE	Persian	1400-1500	D	" "	-	-		
		ME/NE	Turkish	1500-1530	D	" "	-	-		
		ARAB	Arabic	1530-1600	D	" "	-	-		
		ME/NE	Turkish	1600-1630	D	" "	-	-		
		ARAB	Arabic	1630-1700	D	" "	-	-		
		ME/NE	Persian	1700-1715	D	" "	-	-		
		ME/NE	Azerbaij.	1830-1900	D	" "	-	-		
		ME/NE	Turkish	1900-1950	D	" "	-	-		
		EUR	Beloruss.	1800-1830	D	7420, 6010	-	-		
EUR	Beloruss.	2130-2200	D	7420, 5945, 5900	-	-				
3 Byelorussian SSR	Minsk	EUR	Beloruss.	1800-1830	D	7420, 6010	-	-	Card in EE	(1)
		EUR	Beloruss.	2130-2200	D	7420, 5945, 5900	-	-		
		EUR	Finnish	0800-0915	Su	6085	x	-		
		EUR	Finnish	0915-1000	M-Sa	1034	x	-		
		EUR	Finnish	1005-1100	M-Sa	1034	x	-		
4 Estonian SSR	Tallinn	EUR	Finnish	1600-1630	M-Sa	6085, 1034	x	-	Card in EE	1511, 1331, 1214, 1074
		EUR	Finnish	2105-2135	D	6085, 1034	x	-		
		EUR	Swedish	2135-2200	D	6085, 1034	x	-		
		EUR	Estonian	2135-2200	D	6085, 1034	x	-		
		EUR	Estonian	2135-2200	D	6085, 1034	x	-		

Republic	Studio	Beam	Language	Times	Days	Frequencies	Xmtr		QSL Policy	HS Xmtrs
							Own	Ric		
5 Georgian SSR	Tbilisi	EU/ME	Georgian	1900-2100	Tu/F/ Su	5930	-	X	Letter in RR (for RR rpt)	5040
6 Kazakh SSR	Alma Ata	-	-	-	-	(No External Service)	-	-	Letter in RR	(2)
7 Kirghiz SSR	Frunze	-	-	-	-	(No External Service)	-	-	Letter in RR (for RR rpt)	(3)
8 Latvian SSR	Riga	EUR	Swedish	0800-0830	Su	5935,575	X	-	Card in EE & Swedish	1421,1349, 1070,575
		EUR	English	0830-0930	Su	5935,1421,1349,575	X	-		
		EUR	Latvian	1930-2000	W	5935,1421,1349,575	X	-		
		EUR	Swedish	2020-2050	Tu/Th, Sa	5935,575	X	-		
		EUR	Latvian	2050-2130	Tu/Th, Sa	5935,1349,575	X	-		
9 Lithuanian SSR	Vilnius	EUR	Lithuan.	2200-2230	D	1554,1106,665	-	X	Card in EE	1554,1106, 665
		EU/NA	English	2230-2300	Sa/Su	7355,7310,5940,1554,1106,665	-	X		
		EU/NA	Lithuan.	2230-2300	M-F	7355,7310,5940,1554,1106,665	-	X		
		NA	English	0030-0100	Su/M	7355,5980,5940,5915	-	X		
		NA	Lithuan.	0030-0100	Tu-Sa	7355,5980,5940,5915	-	X		
10 Tadzhik SSR	Dushanbe	S ASIA	Tadzhik	1400-1500	D	7275,1142	X	-	Card in RR (for RR rpt)	4975,4635
		ME/NE	Persian	1530-1600	D	" "	-	-		
		S ASIA	Tadzhik	1600-1630	D	" "	-	-		
		S ASIA	Tadzhik	1700-1730	D	" "	-	-		
		ME/NE	Persian	1800-1830	D	" "	-	-		
11 Turkmen SSR	Ashkhabad	-	-	-	-	(No External Service)	-	-	Letter in RR (for RR rpt)	4895,4825

Republic	Studio	Beam	Language	Times	Days	Frequencies	Xmtr		QSL Policy	HS Xmtrs
							Own	RM		
12 Ukrainian SSR	Kiyev	EUR	Moldavian	1530-1600	D	1376, 890	x	-	Card in EE	6020, 4940
		EUR	Ukrainian	1730-1800	D	7360, 6020, 5920	x	-		
		EUR	German	1800-1830	Su/Tu F	7360, 6020, 5920	x	-		
		EUR	Ukrainian	1800-1830	W/Sa	7360, 6020, 5920	x	-		
		EUR	Moldavian	1830-1900	D	1546	x	-		
		EUR	English	1930-2000	D	7360, 6020, 5920	x	-		
		EUR	Ukrainian	2030-2100	D	7360, 6020, 5920	x	-		
		EUR	Ukrainian	2200-2400	D	1241	-	-		
		NA/SA	Ukrainian	2200-2300	D	17720, 15450*, 15180*, 12050*, 9800, 9790, 9635+, 7400, 7235, 7205, 7150, 7100, 6020, 5940, 4860	-	x		
		NA/SA	English	0030-0100	M, W, Th, Sa	15450*, 15180*, 15140, 12050*, 9800, 9790, 9635+, 7205, 7150, 6020	-	x		
		NA/SA	English	0300-0330	M, W, Th, Sa	11860*, 9800, 9790, 9780*, 9635+, 9580*, 7260, 7245, 6020, 5980, 5905, 7260, 7245, 5980	-	x		
		NA/SA	Ukrainian	0330-0400	M, W, Th, Sa	(Monitorin.f suggests: * Petropavlovsk, + Khabarovsk)	-	x		
13 Uzbek SSR	Tashkent	S ASIA	English	1200-1230	D	11925, 9600, 9540, 6025	x	-	Card in EE	5925, 4850
		S ASIA	Urdu	1230-1300	D	11925, 9600, 9540, 6025	x	-		
		C ASIA	Uighur	1230-1330	D	6135, 5915, 5035*, 1367*	x	-		
		S ASIA	Hindi	1300-1330	D	11925, 9600, 9540, 6025	x	-		
		S ASIA	Urdu	1330-1400	D	11925, 9600, 9540, 6025	x	-		
		S ASIA	English	1400-1430	D	11925, 9600, 9540, 6025	x	-		
		C ASIA	Uighur	1430-1500	D	11925, 9600, 6135*, 5915, 5035*	x	-		
		S ASIA	Hindi	1500-1530	D	11925, 9600, 9540, 6025	x	-		
		C ASIA	Uighur	1530-1600	D	6135*, 5915, 5035*, 1367*	x	-		
		ME/NE	Persian	1600-1630	D	9550, 9540, 7145, 5945	x	-		
		ME/NE	Arabic	1630-1700	D	9540, 5945	x	-		
		ME/NE	Uzbek	1700-1800	D	9550, 9540, 7145, 5945	x	-		
(* via Alma Ata)										

Republic	Studio	Beam	Language	Times	Days	Frequencies	Xmtr		QSL Policy	HS Xmtrs
							Own	RM		
14 RSFSR, European	Leningrad	NORTH ATLAN	Russian	2230-2330	F	7250, 1493	-	-		(4)
RSFSR, Asian	Vladivostok	NA/FE/ME/SASIA/PACIF	Russian	0700-0800	Su/W/ F/Sa	17825, 17815, 17705, 15375, 15240, 15190, 11905, 9770, 9620, 7320, 6115, 6080 12240*, 9500*, 5940*, 4030*, 236*, 4485, 182, 4050**, 973**, 281** 7210## 5015#, 245#	-	x	Letter in RR (for RR rpt)	(5)
		ME/FE/SASIA/PACIF	Russian	1430-1530	Su/W/ F/Sa	9790, 9665, 9590, 9450, 7340, 7315, 6145	x	-		
		NA/FE/SASIA/PACIF	Russian	1900-2000	Su/W/ F/Sa	9735, 9580, 7380, 7315, 7300, 7260, 7160, 6175, 5980 5015#, 245#	-	x		
		(including Eng lang lesson)		1930-2000	W	(* Magadan, # Vladivostok, + Petropavlovsk-Kamchatskiy ** Yuzhno-Sakhalinsk, ## Khabarovsk)	x	-		

Notes:

- (1) HS Xmtrs: 12005, 11995, 9795, 9785, 9560, 9540, 9450, 7290
- (2) HS Xmtrs: Alma Ata: 9380, 9250, 6870, 5970, 5260, 5035, 4845, 4545 Ural'sk: 4875 Dzhambul: 4760 Kokchetav: 4420 Kzyl-Orda: 4110, 4055 Semipalatinsk: 4040
- (3) HS Xmtrs: Frunze: 4940, 4010 Osh: 4810 Naryn: 4795
- (4) HS Xmtrs: Ufa: 4485 Petrozavodsk: 5065, 4780 Naryn-War: 4795 Murmansk: 5930 Arkhangelsk: 5015 Moskva: see WRTVH
- (5) HS Xmtrs: Vladivostok: 11990, 9770, 7255, 7200, 5015, 4040 Khabarovsk: 11890, 9810, 9770, 9645, 9620, 9375, 7310, 7100, 6190, 6115, 6080, 6035, 5990, 5970, 5900, 4610 Yakutsk: 11765, 9725, 9585, 7200, 7165, 7100, 4825, 4800, 4395 Magadan: 12240, 9500, 7380, 7320, 7230, 5940 Irkutsk: 7420, 7345, 6090, 5930 Tyumen: 4940, 4895 Krasnoyarsk: 9790, 7440, 7145, 5290 Ulan Ude: 4795 Yuzhno-Sakhalinsk: 11840, 4050 Blagoveshensk: 4975 Krasnoyarsk: 9790, 7440, 7145, 5290 Palana: 4520 Nikolayevsk-na-Amure: 7370 Khatny-Mansysk: 4520 Anadyr: 4030 Chita: 5055

Sources:

This chart is based upon one first appearing in Dixing the USSR June 1975 edition, © Australian Radio DX Club, for which we gratefully acknowledge permission granted by the ARDXC and the author, Bob Padula. Information on Home Service Transmitters and QSL Policy comes from the October 1975 edition, and other information is based on BBC Monitoring Service schedules on "USSR Regional Radio Centres (External Services)" Winter 1975/76, © BBC.

RADIO MOSCOW HOME SERVICES

<u>PROGRAMME:</u>	<u>F I R S T</u>	<u>F I R S T</u>	<u>F I R S T</u>	<u>F I R S T</u>	<u>T H I R D</u>
<u>xmsn span:</u>		"A"	"B"	"C"	
	0200-2200	1900-1500	2100-1700	2300-1900	0600-2000
<u>FREQUENCY:</u>					
15480			0800-0900		
15470	0800-1300				
15310	0800-1400				
15275				0800-1200	
14860	0800-1300				
12070	1000-1230				
12055	0500-0800				
12045	0500-1400				
12005	0300-0700 1100-1300				
12000			0200-0400		
11995	0400-1030 1100-2100				
11930	0800-1000				
11785	0500-0800 1000-1200		0800-1300		
11760				0500-1100	
11735					0600-1300
11715			0200-0400		
11700				0800-1200	
11690					0600-1300
10530*				0001-0200 1000-1200 1500-1900	
9810	0500-1300				
9800	0700-1300				
9775	0700-1000				
9765	1130-1400		0200-0400		
9700	0800-1700				
9655					0600-1600
9575					0600-1500
9540					0600-1200
9500			0200-0300		
9490				0800-1500	
9380*				0001-1200 1500-1900	
7440	0700-1400				
7420	0400-1800				
7400				2300-0600	
7355					0600-1500
7345			2300-2400		
7340	0300-0600 1200-2100				
7320			0800-0900		

<u>PROGRAMME:</u>	F I R S T	F I R S T "A"	F I R S T "B"	F I R S T "C"	T H I R D
<u>FREQUENCY:</u>					
7290	0600-0700				
7285	0300-0600 1000-1700				
7265	0600-0700				
7240	0600-0700				
7210	0300-0600			0001-0200	
7200					0600-1500
7145			2100-0100		
6870				0001-0100	
6180	1400-1500				
6090	0200-0500				
6080				0001-0600	
6065				0001-0200	
6030				2300-0500	
6000	0200-0500 1300-1930				
5940			1400-1700		
5920	0200-0600				
5910	0200-0700				
5900				2300-0500	
5065	0200-0800				
4975				0001-0200	
4895	0200-0500 1400-2100				
4850				0001-0200 1700-1800	
4825	0200-0500				
4810	0200-0600				
4785	0400-0500 1400-2100				
4780	0200-0800				

Notes:

(*) Alma Ata All times GMT Frequencies in kHz

Source:

From the BBC Monitoring Service schedule "USSR (Domestic Services) Radio Moscow Short-wave Frequency-Usage Chart", winter. © British Broadcasting Corporation, 1975. All BBC items appear with permission.

SSB FEEDER SERVICES

These services are constantly changing frequency, times of operation, and service carried, and are not, therefore, included in the main list of Radio Moscow Home Services. As a guide to the number of channels involved and programmes carried, the list below has been provided and has been corrected to December 1975.

First Programme Feeders: 15700 from 1200-1300, 14850 from 0900-1200, 12390 from 1100-1500, 12205 from 0300-1600, 12100 from 0400-1400, 6825 from 2000-2100, and 6770 from 1300-2100. First "A" Programme Feeders: 18285 from 0800-0900, 15490 from 0500-0900, 9150 from 0001-0300, and 6807 from 0900-1500. First "C" Programme Feeders: 19120 from 0800-1000, 16030 from 0500-1200, 15540 from 0600-0800, 13820 from 0800-1200, 12250 from 0400-1400, 12175 from 1000-1400, 11495 from 0400-1500, 9200 from 0001-0200, 8125 from 2300-0200, 7970 from 1600-1800 and 2300-0400, 7410 from 1300-1800, 6770 from 0001-0300, and 5815 from 0001-0200. First "B" Programme Feeders: 5255 from 1100-1700 and 2100-0300.

RUSSIAN LANGUAGE REPORTING FORM

The Russian language report form on the following page is simple to use and should be of use in reporting to some of the regional stations throughout the Soviet Union. Although the official policy currently being publicized is that the regionals will not QSL, there have been several known cases of QSLs being received. In any case, the form may be used by a DXer in reporting to any station broadcasting a Russian language program.

DIRECTIONS:

Simply take your copy of "Guide to Soviet Broadcasting" to your nearest library, or other source, where you can make a photo copy of the Russian format - then fill in the blanks using the guide lists/phrases below. Use care in penmanship when duplicating the few necessary Russian alphabet characters. An English translation of the Russian format is provided here:

Date 197 Year, Day

My postal address is:

RECEPTION REPORT OF
RADIO STATION

U.S.A.

Dear Friends,

Today I had the great pleasure to hear your broadcast from _____ to _____ hours in Greenwich Time on frequency of _____ mHz in the _____ meter band! The broadcast which I heard contained the following details:

Greenwich Time

Program Details

The language heard was _____. My evaluation of the transmission in "SINPO" code would be _____.

My receiver is a _____. I employ an antenna which is _____ meters long. If my report is correct, please send me your verification or QSL which confirms my reception of your station. Please also send me your transmission schedule, pennant, and other information about your city and country.

Finally, I wish all the best to you. Thank you for your kind attention!

With friendly greetings,

- (1) In the date line of the letter, use Roman Numerals to reflect the month (i.e. XII = December).
- (2) Use the Russian spelling of the day:
Monday: ПОНЕДЕЛЬНИК Thursday: ЧЕТВЕРТ Sunday: ВОСКРЕСЕНЬЕ
Tuesday: ВТОРНИК Friday: ПЯТНИЦА
Wednesday: СРЕДА Saturday: СУББОТА
- (3) Use English spelling for the blank describing your receiver.
- (4) Languages:
Russian: РУССКОМ French: ФРАНЦУЗКОМ Chinese: КИТАЙСКОМ
Turkish: ТУРЕУКОМ Swedish: ШВЕДСКОМ German: НЕМЕЧКОМ
- (5) Details:
News: ИЗВЕСТИЯ Music: МУЗИКА
Commentary: КОМЕНТАР National: НАЦИОНАЛЬНАЯ
Sign on: НАЧАЛО Popular: ПОПУЛЯРНАЯ
Sign off: КОНЕЦ Light: ЛЁГКАЯ
Request program: КОНЦЕРТ ПО ЗАЯВКЕ marches: МАРШОВЫЕ ПЕСНИ
Read by man: ЧИТАЕТ МУЖЧИНА Symphony: СИМФОНИЧЕСКАЯ
Read by woman: ЧИТАЕТ ЖЕНЩИНА Opera: ОПЕРНАЯ
Press Review: ОБЗОР ПЕЧАТИ Program: ПРОГРАММА
Station ID: ОБЪЯВЛЕНИЕ СТАНЦИИ Pgm for children: ПРОГРАММА ДЛЯ ДЕТЕЙ

Source:

These two pages of Russian language reporting guide were prepared for NASWA by Rumen Pankov of Bulgaria and submitted via Ed Shaw. It appears by permission and the authors and SPEEDX thank them for allowing the reproduction of this Russian language report form.

— — 197, —

РАПОРТ О ПРИЁМЕ

РАДИО СТАНЦИЮ

МОЙ ПОЧТОВЫЙ АДРЕС:

СЩА

ДОРОГИЕ ДРУЗЬЯ,

СЕГОДНЯ Я ИМЕЛ УДОВОЛЬСТВИЕ УСЛЫШАТЬ ВАШУ ПЕРЕДАЧУ ОТ _____ ДО _____ ЧАСОВ ПО ГРИНВИЧУ НА ЧАСТОТЕ _____ МГЦ В ДИАПАЗОНЕ _____ МЕТРОВ! ПЕРЕДАЧА, КОТОРАЯ Я СЛЫШАЛ ИМЕЛА СЛЕДУЮЩЕЕ СОДЕРЖАНИЕ:

ВРЕМЯ ПО ГРИНВИЧУ

ДЕТАЛИ ПРОГРАММЫ

ПЕРЕДАЧА ВЕЛАСЬ НА _____ ЯЗЫКЕ. ОЦЕНКА КАЧЕСТВ ВАШЕЙ ПЕРЕДАЧИ ПО "SINPO" БЫЛА. _____ . МОЙ ПРИЁМНИК _____ . Я ПОЛЬЗУЮСЬ ВНЕШНОЙ АНТЕННОЙ ДЛИННОЙ В _____ МЕТРОВ. ЕСЛИ ЭТИ СВЕДЕНИЯ ПРАВИЛЬНЫЕ, ПРОШУ ВАС, ОТПРАВИТЬ МНЕ ВАШУ КАРТОЧКУ ПОТВЕРЖДЕНИЯ ТИПА "QSL", В КОТОРОЙ ВЫ УТВЕРЖДАЕТЕ ЧТО Я В ДЕЙСТВИТЕЛЬНОСТИ СЛЫШАЛ ВАШУ РАДИО СТАНЦИЮ. ПРОШУ ВАС ОТПРАВИТЬ МНЕ ВАШЕ РАССПИСАНИЕ (ПЕРЕДАЧ И ИХ ЧАСТОТ), ТАК ЖЕ ФЛАГ СТАНЦИИ И ЗНАЧОК, И АРУГУЮ ИН ФОРМАЦИЮ ОТНОСИТЕЛЬНО ВАШЕГО ГОРОДА И СТРАНЫ.

В КОНЦЕ МОЕГО РАПОРТА, ХОЧУ ВЫРАЗИТЬ ИСКРЕННУЮ БЛАГОДАРНОСТЬ ЗА ОКАЗАННОЕ МНЕ ВНИМАНИЕ!

С ДРУЖЕСКИМИ ПРИВЕТАМИ

ALPHABETICAL LISTING OF LISTED SOVIET SHORTWAVE TRANSMITTING SITES

Alma Ata, Kazakh SSR(76.95E 43.25N)
 Anadyr, ARSFSR(177.48E 64.75N)
 Andizhan, Kirghiz SSR(72.36E 40.75N)
 Arkhangel'sk, ERSFSR(40.53E 64.57N)
 Armavir, ERSFSR(41.13E 45.00N)
 Ashkhabad, Turkman SSR(58.38E 37.95N)
 Baku, Azerbaijan SSR(49.85E 40.38N)
 Blagoveshchensk, ARSFSR(127.53E 50.28N)
 Chimkent, Kazakh SSR(69.60E 42.30N)
 Chita, ARSFSR(113.50E 52.05N)
 Dudinka, ARSFSR(86.25E 69.41N)
 Dushanbe, Tadzhik SSR(68.80E 38.58N)
 Dzhambul, Kazakh SSR(71.36E 42.90N)
 Frunze, Kirghiz SSR(74.60E 42.98N)
 Gor'kiy, ERSFSR(44.00E 56.33N)
 Gulistan, Uzbek SSR(68.76E 40.50N)
 Gur'yev, Kazakh SSR(51.93E 47.11N)
 Irkutsk, ARSFSR(104.33E 52.27N)
 Ivano Frankovsk, Ukraine SSR
 (24.71E 48.91N)
 Kalach, ERSFSR(41.01E 50.41N)
 Kalinin, ERSFSR(35.91E 56.86N)
 Kan'ov, Ukraine SSR(31.46E 49.73N)
 Kaunas, Lithuanian SSR(23.90E 54.90N)
 Kazan', ERSFSR(49.13E 55.75N)
 Kenga, ARSFSR(80.95E 57.45N)
 Khabarovsk, ARSFSR(135.10E 48.45N)
 Khanty Mansiysk, ARSFSR(69.10E 61.00N)
 Khar'kov, Ukraine SSR(36.25E 50.00N)
 Kingisepp, ERSFSR(28.60E 59.36N)
 Kiyev, Ukraine SSR(30.52E 50.43N)
 Kokchetav, Kazakh SSR(69.41E 53.28N)
 Komsomol'sk na Amure, ARSFSR
 (137.03E 50.58N)
 Krasnoyarsk, ARSFSR(92.83E 56.01N)
 Kursk, ERSFSR(36.20E 51.70N)
 Kyzyl, ARSFSR(94.45E 51.70N)
 Kzyl Orda, Kazakh SSR(65.46E 44.80N)
 Leningrad, ERSFSR(30.25E 59.91N)
 L'vov, Ukraine SSR(24.00E 49.83N)
 Magadan, ARSFSR(150.80E 59.57N)
 Michurinsk, ERSFSR(40.50E 52.90N)
 Minsk, Byelorussian SSR(27.57E 53.98N)
 Mogilev, Byelorussian SSR
 (30.35E 53.90N)
 Moskva, ERSFSR(37.62E 55.75N)
 Murmansk, ERSFSR(33.08E 68.96N)
 Naryn, Kirghiz SSR(75.98E 41.43N)
 Nar'yan Mar, ERSFSR(53.00E 67.65N)
 Nikolayev, Ukraine SSR(32.00E 46.96N)
 Nikolayevsk na Amure, ARSFSR
 (140.73E 53.13N)
 Novosibirsk, ARSFSR(82.91E 55.03N)
 Omsk, ARSFSR(73.40E 55.00N)
 Orenburg, ERSFSR(55.10E 51.90N)
 Orsha, Byelorussian SSR(30.40E 54.50N)
 Osh, Kirghiz SSR(72.80E 40.55N)
 Palana, ARSFSR(159.96E 59.11N)
 Pavlodar, Kazakh SSR(76.95E 52.30N)
 Petropavlovsk, Kazakh SSR
 (69.10E 54.90N)
 Petropavlovsk Kamchatskiy, ARSFSR
 158.65E 53.02N)
 Petrozavodsk, ERSFSR(34.33E 61.78N)
 Riga, Latvian SSR(24.10E 56.95N)
 Ryazan, ERSFSR(39.73E 54.63N)
 Semipalatinsk, Kazakh SSR
 (80.21E 50.46N)
 Serpukhov, ERSFSR(37.41E 54.91N)
 Simferopol', Ukraine SSR
 (34.10E 44.95N)
 Starobel'sk, Ukraine SSR
 (38.93E 49.26N)
 Sukhumi, Georgian SSR(41.03E 43.01N)
 Sverdlovsk, ARSFSR(60.60E 56.85N)
 Syktyvkar, ERSFSR(50.76E 61.66N)
 Tallinn, Estonian SSR(24.75E 59.42N)
 Tashkent, Uzbek SSR(69.38E 41.33N)
 Tbilisi, Georgian SSR(44.82E 41.72N)
 Tula, ERSFSR(37.61E 54.20N)
 Tyumen', ARSFSR(65.53E 57.15N)
 Ufa, ERSFSR(55.93E 54.73N)
 Ulan Ude, ARSFSR(107.61E 51.83N)
 Ural'sk, Kazakh SSR(51.36E 51.23N)
 Uzhgorod, Ukraine SSR
 (23.50E 48.33N)
 Vilnius, Lithuanian SSR(25.32E 54.68N)
 Vinnitsa, Ukraine SSR(28.48E 49.23N)
 Vladivostok, ARSFSR(131.93E 43.17N)
 Vologda, ERSFSR(39.91E 59.20N)
 Voronezh, ERSFSR(39.16E 51.66N)
 Yakutsk, ARSFSR(129.81E 62.21N)
 Yerevan, Armenian SSR
 (44.50E 40.13N)
 Yuzhno Sakhalinsk, ARSFSR
 (142.70E 46.96N)
 Zhigulevsk, ERSFSR(49.45E 53.41N)

ARSFSR= Asiatic Russia
 ERSFSR= European Russia

As of this writing, 85 sites.
 The WRTVH76 lists one new site,
 Mogilev, on a frequency of 11995
 kHz. Another new site was listed
 on a recent QSL: Michurinsk on a
 frequency of 9775 kHz.

SOVIET SITES VERSUS FREQUENCIES, WITH SOURCES LISTED

Sources used: WRTVH76, WRTVH75, FBIS (Foreign Broadcast Info. Service), TBS (Tropical Band Survey), GBS (Guide to Broadcasting Stations), SPEEDX, NASWA and ASWLC Surveys, QSL Columns, ARDXC (Australian Radio DX Club) & SDXC (Swedish DX Club).

Notes: If a source listed a particular site/frequency as did another source, only the first source has that site/frequency shown. For example, if WRTH lists Anadyr on 4030 and so does FBIS, Anadyr is listed under WRTH only.

This list was originally typed up using the WRTH75 listing; however, there have been extensive changes made in the WRTH76, all of which are listed here along with '75 listings. Sites shown with a ('76) mean that this particular site was not listed under this frequency in the '75 WRTH. Sites shown with a ('75) mean that this particular site was listed in the WRTH75, but not in the WRTH76. Sites with no year shown indicate that it was listed in both editions.

This list, incomplete as it probably is, is only as accurate as the sources researched at the time of their research. There are other Soviet frequencies and unknown sites, and any update information will be greatly appreciated.

It is also to be noted that the sites listed are not necessarily Radio Moscow. Many of the site/frequency combinations are those of Home Service programming, many of which are on the Tropical Bands and/or out-of-band frequencies.

<u>Frequency</u>	<u>WRTVH</u>	<u>FBIS</u>	<u>Other</u>
3960			Baku (GBS) /ARDXC
3995	Kyzyl ('76) Khabarovsk ('75)		Nikolayevsk na Amure
4000		Gulistan	
4010	Frunze		
4030	Anadyr		
4040	Yerevan		Magadan (TBS)
	Vladivostok		
	Semipalatinsk		
4050	Frunze		
	Yuzhno Sakhalinsk		
4055	Moskva		Kzyl Orda (ARDXC)
	Petropavlovsk (Kazakh)		
4080		Semipalatinsk	
4110	Kzyl Orda ('75)		
4310	Chimkent		
4395	Yakutsk		
4420	Kokchetav		
4425		Dudinka	
4485	Ufa	Novosibirsk	Vladivostok (SPEEDX)
	Petropavlovsk Kam.		
4510		Andizhan	Yerevan (GBS)
4520	Palana ('76)		
	Khanty Mansiysk		
	Alma Ata		
4545		Gur'yev	
4560		Khabarovsk	
4610		Pavlodar	
4615			
4635	Dushanbe		
	Moskva ('75)		
4656			Baku (SPEEDX)
4760	Khabarovsk ('75) (Weather st.)		
	Dzhambul		
4780	Petrozavodsk		
4785	Baku		
4795	Naryn ('76)		
	Ulan Ude		
	Nar'yan Mar		
	Frunze		
4800	Yakutsk		
4810	Yerevan		Frunze (TBS)
	Osh		Kyzyl (SDXC)
4815		Kyzyl	
4820	Khanty Mansiysk	Magadan	Orenburg (TBS)

<u>Frequency</u>	<u>WRTVH</u>	<u>FBIS</u>	<u>Other</u>
4825	Kiyev Yakutsk Vladivostok Ashkhabad		Khabarovsk(NASWA) Moskva (GBS)
4845			Alma Ata (ARDXC)
4850	Tashkent		Moskva (GBS)
4860	Chita ('76) Moskva Sverdlovsk		Orenburg (TBS)
4875	Ural'sk		
4885	Novosibirsk		
4895	Ashkhabad Tyumen'		
4920	Yakutsk('76) Kiyev	Moskva	
4930	Tbilisi ('76) Ashkhabad Yerevan ('75)		Dushanbe (SDXC)
4940	Frunze ('76) Kiyev Yakutsk Naryn ('75)		Tyumen'
4950			Frunze (SDXC)
4957		Anadyr	
4958	Baku		
4965		Sukhumi	
4975	Blagoveshchensk Dushanbe		
4990	Yerevan ('76)	Alma Ata	
5015	Arkhangel'sk Vladivostok		
5035	Alma Ata		
5040	Tbilisi		
5050			Petropavlovsk Kam./ (TBS)
5055	Chita ('75) Kzyl Orda		
5065	Petrozavodsk		
5260	Alma Ata		
5290	Krasnoyarsk		
5465		Ural'sk	
5495			Tashkent (SDXC)
5755		Moskva	
5825			Syktvykar (SDXC)
5900	Zhigulevsk Petro. Kam.('76) Novosibirsk('76) Orsha Khabarovsk('75) Armavir('76)	Kiyev Minsk	Moskva (SPEEDX)
5905	Kiyev Moskva	Starobel'sk	
5910	Moskva Kiyev ('76) Kenga ('75)		Krasnoyarsk(ARDXC)
5915	Moskva Kaunas ('76) Irkutsk('76) Armavir('75) Zhigulevsk('75) Kiyev ('75) Kenga('75)	Baku Yerevan	Alma Ata (QSL)
5920	Moskva('76) Far East('76) Kiyev ('76) Novosibirsk('76)	Kiyev Minsk	Orsha (QSL) Kazan' (QSL)
5925	Zhigulevsk Moskva ('75) Tashkent		
5930	Murmansk Moskva ('76) Irkutsk ('76) Siberia ('76) Tbilisi ('75)		Krasnoyarsk (ARDXC)

<u>Frequency</u>	<u>WRTVH</u>	<u>FBIS</u>	<u>Other</u>
5935	Riga('75)		
5940	Zhigulevsk Magadan Moskva Simferopol'	Kiyev Minsk Vinnitsa	Serpukhov(QSL)
5945	Tashkent ('75) Orsha ('75)		Minsk (SDXC)
5950	Zhigulevsk Moskva Khabarovsk ('76) Kenga ('75)		
5955	Khabarovsk ('76) Komsomol'sk na Amure ('75)		Vladivostok (NASWA)
5960	Zhigulevsk Vladivostok Kiyev ('75) Orsha ('75)	Kaunas Minsk	
5965	Sverdlovsk ('76) Armavir ('76) Moskva ('75)		
5970	Moskva Alma Ata Irkutsk Khabarovsk ('76) Vinnitsa ('76) Nikolayevsk na Amure ('75)	Chita	
5975	Moskva	Minsk	
5980	Moskva Kiyev Novosibirsk ('76) Irkutsk('76) Kenga ('75) Krasnoyarsk ('75)	Ryazan Tbilisi	Khabarovsk (QSL) Vinnitsa (QSL)
5985	Tula Blagoveshchensk ('76)		Khabarovsk (QSL)
5990	Serpukhov Khabarovsk ('75)	Nikolayevsk na Amure	
6000	Zhigulevsk	Moskva	Khabarovsk (QSL) Voronezh (QSL)
6005	Vologda	Voronezh	
6010	Moskva Novosibirsk('76) Kiyev ('75) Sverdlovsk ('75)	Krasnoyarsk	
6015	Orsha		
6020	Moskva ('75) Kiyev Khabarovsk		
6025	Tashkent		
6030	Zhigulevsk Kiyev Sverdlovsk Dushanbe ('76)	Moskva Simferopol'	
6035	Khabarovsk	Vladivostok	
6040	Orsha		
6045	Moskva Kiyev		
6050	Khabarovsk	Irkutsk	Tallinn(QSL) /(QSL) Nikolayevsk na Amure Komsomol'sk na Amure /(QSL)
6055	Kiyev Leningrad('75) Zhigulevsk ('75) Moskva('76) Nikolayevsk na Amure('76) Alma Ata ('75)	Starobel'sk Tallinn	
6060	Komsomol'sk na Amure ('75) Moskva ('75) Kiyev ('75) Novosibirsk ('76) Kaunas('75) Kenga ('75) Vladivostok Moskva('75)	Minsk	
6065	Armavir Novosibirsk ('76) Kaunas('75) Kenga ('75) Vladivostok Moskva('75)		
6070	Vladivostok Moskva('75)	Khabarovsk L'vov	



---- EUROPEAN/ASIAN BOUNDARY

SW TRANSMITTER SITE

1
2
3
4
5
6
7
8



SOVIET REPUBLICS

- | | |
|--------------------------|---------------------------|
| ARMENIAN SSR. | 9 KIRGHIZ SSR. |
| ASIAN RSFSR. | 10 LATVIAN SSR. |
| AZERBAIJAN SSR. | 11 LITHUANIAN SSR. |
| BYELORUSSIAN SSR. | 12 MOLDAVIAN SSR. |
| ESTONIAN SSR. | 13 TADZHIK SSR. |
| EUROPEAN RSFSR. | 14 TURKMEN SSR. |
| GEORGIAN SSR. | 15 UKRAINIAN SSR. |
| KAZAKH SSR. | 16 UZBEK SSR. |

IS IN THE SOVIET UNION

<u>Frequency</u>	<u>WRTVH</u>	<u>FBIS</u>	<u>Other</u>
6075	Sverdlovsk Kiyev ('75)		
6080	Moskva Dushanbe ('76) Khabarovsk ('76)	Frunze	
6085	Komsomol'sk na Amure ('75) Yerevan Tallinn Orsha ('75)	Tbilisi	
6090	Irkutsk Zhigulevsk	Orenburg	Vladivostok (NASWA) (ARDXC) Nikolayevsk na Amure
6095	Moskva ('76)		
6100	Zhigulevsk Petropavlovsk Kam. ('76)	Kursk Vladivostok	
6105	Moskva Tallinn Leningrad ('76) Kenga ('75)	Dushanbe Kalinin	
6110	Baku ('75)		
6115	Zhigulevsk Nikolayevsk na Amure ('76) Khabarovsk ('75)	Orenburg	
6120	Armavir Kiyev ('76) Kenga ('75) Yerevan ('75) Moskva ('75)		
6125	Ashkhabad Novosibirsk ('76) Kenga ('75)	Krasnoyarsk	
6130	Moskva Irkutsk	Novosibirsk	
6135	Vladivostok ('76) Alma Ata ('75)		
6140	Moskva ('76) Voronezh ('75)		
6145	Moskva Vladivostok ('76) Armavir ('75) Sverdlovsk Khabarovsk ('75)	Omsk Starobel'sk	
6150	Irkutsk ('76)		
6155	Novosibirsk ('76) Kenga ('75)	Krasnoyarsk	
6160	Moskva		
6165	Moskva Blagoveschensk ('76) Vladivostok ('75)	Kiyev	
6170	Zhigulevsk Armavir ('76)	Starobel'sk	
6175	Moskva Vinnitsa Kiyev Sverdlovsk Irkutsk ('76) Krasnoyarsk ('75)	Kazan'	
6180	Tula Alma Ata		Ryazan (QSL)
6185	Ryazan Leningrad ('76) Krasnoyarsk ('75)		
6190	Nikolayevsk na Amure Novosibirsk ('76) Kenga ('75)	Omsk	Khabarovsk (NASWA)
6195	Baku ('75)		
6200	Moskva Armavir Leningrad ('76) Kiyev ('76) Kenga ('75)		Chita (QSL) L'vov (QSL) Omsk (QSL)
6870	Alma Ata		
6930		Moskva	

<u>Frequency</u>	<u>WRTVH</u>	<u>FBI5</u>	<u>Other</u>
7100	Moskva Sverdlovsk Petrovavlovsk Kamchatskiy Yakutsk R.Moscow relay, Bulgaria('76) Novosibirsk('76) Irkutsk('76) Kenga('75) Armavir('75)		Orsha (QSL) Khabarovsk(ARDXC)
7105	R.Moscow relay, Bulgaria(76)	Orsha	Armavir(QSL)
7110	Zhigulevsk Novosibirsk('76) Nikolayevsk na Amure('76) Kenga('75) Kingisepp('75)	Tula Omsk	Khabarovsk(QSL) Moskva(QSL)
7115	Alma Ata Irkutsk('76) R.M. relay, Bulgaria('76) Novosibirsk('76)	Chita Dushanbe	Khabarovsk(QSL) Ivano Frankovsk(QSL)
7120	Simferopol' Moskva	Sverdlovsk L'vov	Tula(QSL)
7125	Zhigulevsk Yerevan('76) Nikolayevsk na Amure('76)	Kazan'	Khabarovsk(ARDXC)
7130	Armavir Kaunas Leningrad('76) Kingisepp('75)	Yerevan	
7135	Moskva Kiyev Orsha Vladivostok('76) Armavir('76) Novosibirsk('76) Komsomol'sk na Amure('75) Kenga('75)	Dushanbe	
7140	Moskva Kaunas Orsha('76)	Riga	
7145	Tula Tashkent Moskva('76) Krasnoyarsk('76)		
7150	Zhigulevsk Simferopol' Novosibirsk('76) Vladivostok('76) Sverdlovsk('75)	Kiyev Sverdlovsk	L'vov(QSL) Khabarovsk(QSL) Moskva(QSL)
7155		Kazan' Vilnius	
7160	Zhigulevsk Petrovavlovsk Kam. Moskva('76) Novosibirsk('76) Orsha('76) Armavir('75) Kenga('75) Vladivostok('75)	L'vov Omsk	Minsk (SDXC) Kiyev(QSL) Tashkent(QSL)
7165		Vinnitsa	Kiyev(QSL) Yakutsk(ARDXC) Khabarovsk(QSL)
7170	Sverdlovsk Irkutsk Nikolayevsk na Amure('76) Novosibirsk('76) Yerevan('76) Moskva('75) Kenga('75) Komsomol'sk na Amure	Armavir	
7175	Gor'kiy Zhigulevsk Petrovavlovsk Kamchatskiy Dushanbe('76) Khabarovsk('75)	Starobel'sk	Tashkent(QSL) Yerevan(ARDXC)
7180	Kiyev		Blagoveshchensk(QSL)

<u>Frequency</u>	<u>WRTVH</u>	<u>FBIS</u>	<u>Other</u>
7185	Yerevan Zhigulevsk Irkutsk Moskva('76) Nikolayevsk na Amure('76) Novosibirsk('76) Kenga('75) Blagoveshchensk('75)	Sverdlovsk Tbilisi	
7190	Moskva		
7195	Irkutsk Armavir Moskva('76) Kaunas('75) Kiyev('75)	Tula Vinnitsa	
7200	Vladivostok Leningrad('76) Zhigulevsk('76) Yakutsk('75)		Armavir(QSL) Moskva(QSL)
7205	Alma Ata Moskva Sverdlovsk Kiyev Zhigulevsk('75)	Armavir	Frunze (NASWA)
7210	Moskva Sverdlovsk Khabarovsk		Orsha(QSL) Vladivostok(SPEEDX)
7220	Chita Irkutsk('75)		Vladivostok
7225	Nikolayevsk na Amure('76)		
7230	Moskva Novosibirsk('76) Nikolayevsk na Amure('76) Sverdlovsk('76) Kenga('75) Krasnoyarsk('75) Irkutsk('75) Zhigulevsk('76)	Kazan'	Minsk(QSL) Magadan(ARDXC)
7235	Tula		Vinnitsa(QSL)
7240	Zhigulevsk		Minsk(SPEEDX) Alma Ata(QSL) Tula(QSL)
7245	Alma Ata Vinnitsa Vladivostok('76) Yerevan('75) Moskva('76)	Tashkent Tbilisi	
7250	Novosibirsk('76)		
7255	Novosibirsk('76) Vladivostok('76)		
7260	Tula Kiyev Vladivostok Petropavlovsk Kam.('76)	Minsk	
7265	Armavir Yakutsk Moskva('76) Leningrad('76) Vladivostok('76) Ryazan('75) Kingisepp('75) Yerevan('75) Khabarovsk('75)	Baku	
7270	Kiyev Irkutsk Moskva('76) Novosibirsk('76) Kenga('75)		
7275	Irkutsk Komsomol'sk na Amure Kenga('75) Yerevan('75)		Khabarovsk(NASWA) Nikolayevsk na Amure /(ARDXC)

<u>Frequency</u>	<u>WRTVH</u>	<u>FBIS</u>	<u>Other</u>
7280	Moskva Kiyev('76) Blagoveshchensk('76) Armavir('75) Komsomol'sk na Amure('75) Zhigulevsk('75)		
7285	Moskva Nikolayevsk na Amure('76)	Krasnoyarsk	
7290	Petropavlovsk Kam. Moskva Sverdlovsk('76) Yerevan('76) Simferopol' Minsk('75)	Tbilisi	Krasnoyarsk(ITU)
7295	Chita Tashkent Zhigulevsk Moskva('75) Armavir('75)		
7300	Moskva Dushanbe Zhigulevsk('76) Novosibirsk('76) Kenga('75)		Petro.Kam.(NASWA) Kazan'(QSL)
7305	Moskva Armavir Novosibirsk('76) Leningrad('76) Kenga('75) Kingisepp('75) Zhigulevsk('75)		
7310	Irkutsk Zhigulevsk Moskva Khabarovsk('76) Simferopol'('75)	Nikolayevsk na Amure	Armavir(QSL)
7315	Chita Moskva('76) Yerevan('76) Sverdlovsk('75)		
7320	Moskva Magadan Sverdlovsk Yerevan('75)		Minsk(QSL)
7325	Kaunas Novosibirsk('76) Kenga('75)		
7330	Moskva		
7335	Armavir Zhigulevsk Yerevan('75)		
7340	Moskva Irkutsk Leningrad('76) Vladivostok('76) Orsha('75) Kingisepp('75) Zhigulevsk('75)		
7345	Moskva Novosibirsk('76) Yakutsk('76) Irkutsk('75)		
7350	Moskva('76)		
7355	Simferopol' Moskva Armavir Zhigulevsk Novosibirsk('76) Kiyev('75)		Omsk(QSL)
7360	Armavir('76)		Minsk(SDXC) /(ARDXC)
7370	Moskva Sverdlovsk	Minsk	Nikolayevsk na Amure

<u>Frequency</u>	<u>WRTVH</u>	<u>FBIS</u>	<u>Other</u>
7380	Kiyev Kaunas Sverdlovsk Moskva Leningrad Vinnitsa ('76) Irkutsk('76)	Magadan	
7390	Moskva Kaunas Vinnitsa Kiyev('76) Zhigulevsk('76) Armavir('76) Kingisepp('75)		
7400	Moskva Simferopol' Vologda Armavir Leningrad('76) Kingisepp('75)	Kiyev	
7420	Moskva Orsha Irkutsk('76) Zhigulevsk('76) Vinnitsa('75) Kiyev('75) Kenga('75)	Minsk	
7440	Moskva Novosibirsk('76) Krasnoyarsk('76) Kenga('75)		
7540		Moskva	
7565		Alma Ata	
9090		Alma Ata	
9250	Alma Ata		
9350		Alma Ata	
9375	Khabarovsk		
9380	Alma Ata		
9450	Moskva Minsk Sverdlovsk Nikolayevsk na Amure('76) Kiyev('76)		
9470	Orsha Armavir Kiyev Moskva Novosibirsk('76) Dushanbe('75)		
9480	Orsha('76) Armavir('76) Dushanbe('76) Yerevan('76)	Moskva Minsk	
9490	Zhigulevsk('76)	Moskva	
9500	Magadan Zhigulevsk Armavir Chita Leningrad('76) Alma Ata('75) Novosibirsk('76) Kenga('75)		Kenga(QSL) Moskva(QSL)
9505			
9510	Zhigulevsk Tashkent('76)	Ashkhabad	
9515	Armavir('76) Yerevan('75)	Baku Krasnoyarsk	
9520	Moskva Simferopol' Yerevan('76) Armavir('76)	Leningrad	
9525	Kingisepp('75) Moskva('75) Simferopol'('76)	Kenga	

<u>Frequency</u>	<u>WRTVH</u>	<u>FBIS</u>	<u>Other</u>
9530	Moskva Sverdlovsk Zhigulevsk R.M. Relay, Bulgaria ('76) Novosibirsk('76) Dushanbe('76) Alma Ata('76) Simferopol('75)		
9535	Alma Ata Zhigulevsk		
9540	Minsk Moskva Leningrad('76) Nikolayevsk na Amure('76) Vladivostok('76) Petropavlovsk Kam. ('75) Tashkent('75)		
9545	Vladivostok('76) Moskva('75)		
9550	Moskva Irkutsk('76) Vinnitsa('75) Kiyev('75) Kingisepp('75) Tashkent('75)	Tbilisi	
9555		Irkutsk	
9560	Zhigulevsk Leningrad Novosibirsk('76) Minsk ('75) Kiyev('75)	Serpukhov	
9565	Tashkent Novosibirsk('76)	Kiyev	
9570	Moskva		
9575	Vinnitsa Khabarovsk Irkutsk('76) Zhigulevsk('76)	Nikolayevsk na Amure	
9580	Moskva Petropavlovsk Kam. Zhigulevsk Kiyev Blagoveshchensk('75)	Kazan' Starobel'sk	Dushanbe(NASWA)
9585	Yakutsk		
9590	Simferopol' Sverdlovsk Novosibirsk('76) Kenga('75)	Omsk Starobel'sk Khabarovsk	
9600	Moskva Simferopol' Kiyev('76) Petropavlovsk Ka.('76) Kenga('75) Tashkent('75)		
9605	Zhigulevsk Serpukhov('75)		
9610	Tula Kiyev Vinnitsa Alma Ata('76) Blagoveshchensk('76) Vladivostok('76) Simferopol'('75) Khabarovsk('75)	Vilnius	
9615	Leningrad('76)		
9620	Moskva Kiyev Armavir Nikolayevsk na Amure('76) Khabarovsk('75)		
9625	Moskva('76)		
9630	Serpukhov Kaunas		Armavir(QSL)

<u>Frequency</u>	<u>WRTVH</u>	<u>FBIS</u>	<u>Other</u>
9635		Vladivostok	
9640	Moskva		
	Zhigulevsk		
9645	Kenga('75)	Khabarovsk	
	Novosibirsk('76)		
	Blagoveshchensk('75)		
9650	Leningrad		Irkutsk(SDXC)
	Moskva		Minsk(QSL)
	Kiyev('75)		Orsha(QSL)
9655	Orsha	Chita	Minsk(QSL)
	Armavir		
	Irkutsk		
9660	Vinnitsa('76)	Minsk	Moskva(QSL)
	Yerevan('75)		
9665	Yerevan	Baku	Voronezh(QSL)
	Irkutsk	Chita	
	Simferopol'	Ivano Frankovsk	
	Kingisepp('75)		
	Tashkent('75)		
9670	Irkutsk		
	Moskva('75)		
9675	Armavir	Voronezh	
	Simferopol'		
	Vladivostok('75)		
	Novosibirsk('76)		
9680		Moskva	Yerevan(QSL)
9685	Simferopol'	Kiyev	
	Moskva		
	Sverdlovsk('76)		
	Chita('76)		
	Armavir('75)		
9690	Tula	Khabarovsk	Vladivostok(NASWA)
	Zhigulevsk		(ARDXC)Nikolayevsk na Amure
9695	Armavir('76)	Orsha	
	Yerevan('75)	Khabarovsk	
	Kaunas('75)	Tbilisi	
9700	Moskva('75)		Chita(SPEEDX)
			Nikolayev(QSL)
			Uzhgorod(QSL)
			L'vov (QSL)
9705	Novosibirsk('76)		
	Vinnitsa('76)		
9710	Dushanbe	Frunze	Kiyev(QSL)
	Moskva	Irkutsk	
	Vinnitsa('76)		
	Petropavlovsk Kam.('76)		
	Chita('75)		
9715	Orsha	Orenburg	
9720	Ryazan		
	Tashkent	Frunze	
	Vinnitsa		
	Irkutsk		
	Zhigulevsk		
	Armavir('75)		
9725	Yakutsk		
9730	Zhigulevsk	Tula	Nikolayevsk na Amure
	Moskva('76)		/(QSL)
	Dushanbe('75)		
9735	Tula		
	Nikolayevsk na Amure('76)		
	Yerevan('76)		
	Petropavlovsk Kam.('76)		
	Khabarovsk('75)		
	Kiyev('75)		
9740	Leningrad		
	Moskva		
9745	Moskva	Kenga	
	Yerevan		
	Novosibirsk('76)		
9750	Moskva	Krasnoyarsk	
	Novosibirsk('76)		
	Kenga('75)		
9755	Nikolayevsk na Amure('76)		Alma Ata(SPEEDX)
			Orsha(SPEEDX)

<u>Frequency</u>	<u>WRTVH</u>	<u>FBIS</u>	<u>Other</u>
9760	Leningrad('76) Nikolayevsk na Amure('76) Yerevan('76) Kingisepp('75) Irkutsk('75) Orsha('75)	Ashkhabad	Ivano Frankovsk(QSL)
9765	Moskva Leningrad('75) Armavir('75)	Irkutsk	
9770	Vladivostok Khabarovsk Novosibirsk('76) Kenga('75)		
9775	Vinnitsa Zhigulevsk Kingisepp('75) Irkutsk('75) Moskva('76)		Michurinsk(QSL)
9780	Blagoveschensk('76) Petropavlovsk Kam.('76) Khabarovsk('75) Dushanbe('75) Moskva('75)	Yerevan	Zhigulevsk(QSL) Nikolayevsk na Amure /(QSL)
9785	Moskva Sverdlovsk('76) Orsha Yerevan('75)		Minsk(SDXC) Zhigulevsk(QSL)
9790	Nikolayevsk na Amure('76) Krasnoyarsk('76) Novosibirsk('76) Alma Ata('75) Kenga('75)	Yerevan	
9795	Moskva Yerevan('76) Minsk('75)		
9800	Moskva Armavir Tashkent('76) Zhigulevsk('76) Sverdlovsk('76) Khabarovsk('75) Kingisepp('75) Chita('75) Yerevan('75)		Kazan'(SPEEDX)
9810	Moskva('76) Khabarovsk('76) Irkutsk('76) Nikolayevsk na Amure('76) Armavir('76) Simferopol('76) Baku		
9840		Moskva	
9850		Moskva	
9880			-
9910			
10530	Alma Ata		Serpukhov (QSL)
11570		Moskva	
11630	Moskva		
11690	Moskva Nikolayevsk na Amure('76) Yerevan('76) Novosibirsk('76) Tashkent('76) Khabarovsk('75) Kenga('75)	Baku	Vladivostok(QSL) Petro. Kam. (QSL) Blagoveschensk(QSL)
11700	Moskva Zhigulevsk Nikolayevsk na Amure('76) Dushanbe('76) Armavir('75) Tashkent('75)		
11705	Kiyev	Serpukhov	

<u>Frequency</u>	<u>WRTVH</u>	<u>FBIS</u>	<u>Other</u>
11710	Moskva Armavir Yerevan Irkutsk Nikolayevsk na Amure('76) Khabarovsk('75) Komsomol'sk na Amre('75)		Vladivostok(ARDXC)
11715	Moskva Simferopol('76) Yerevan('76)	Orsha	
11720	Tashkent Armavir Irkutsk Zhigulevsk('76) Vladivostok('76) Moskva('76) Tula('75) Yerevan('75) Khabarovsk('75)	Sverdlovsk	Chita(QSL)
11725	Moskva	Simferopol'	
11730	Armavir Vladivostok('76) Novosibirsk('76) Tashkent('75) Khabarovsk('75)	Chita Vinnitsa	
11735	Zhigulevsk Simferopol'		Vinnitsa(QSL)
11740	Irkutsk	Novosibirsk	
11745	Moskva Armavir('75) Sverdlovsk('75)	Minsk	
11750	Zhigulevsk Vladivostok('76) Kaunas('75)		
11755	Yerevan Leningrad('76) Kaunas('76) Simferopol('75) Kingisepp('75) Chita('75)	Tashkent Tbilisi Vladivostok	
11760	Moskva		
11765	Moskva Tashkent('76) Yakutsk Tallinn('76) Kenga('75)		
11770	Irkutsk Simferopol' Kingisepp('75) Vinnitsa('75)	Moskva	Kursk(QSL) Kiyev(QSL) Khabarovsk(QSL) Chita(SPEEDX)
11775	Armavir Vinnitsa Tashkent('76) Kenga('75)		
11780	Sverdlovsk	Omsk	
11785	Tashkent Novosibirsk('76)		
11790	Ryazan Yerevan Simferopol'		
11795	Kaunas	Moskva	
11800	Kiyev Vladivostok('76)		
11805	Moskva Yerevan('75)	Kazan'	
11810	Moskva Yerevan Orsha('76) Novosibirsk('76) Kiyev('75)	Simferopol'	Minsk(NASWA)
11815			Khabarovsk(SPEEDX)

<u>Frequency</u>	<u>WRTVH</u>	<u>FBIS</u>	<u>Other</u>
11820	Yerevan Irkutsk Kiyev Armavir Moskva('76)	Krasnoyarsk	Tbilisi(QSL) Voronezh(NASWA)
11830	Kiyev Leningrad Moskva Vladivostok('76) Vinnitsa('75)		Tbilisi(QSL)
11835	Moskva Novosibirsk('76)	Krasnoyarsk Serpukhov	
11840	Kenga Yuzhno Sakhalinsk		
11845	Zhigulevsk	Kazan'	
11850	Leningrad Moskva Alma Ata Simferopol' Sverdlovsk('76) Khabarovsk('75) Irkutsk('75) Kaunas('75) Zhigulevsk	Kazan' Konevo Vladivostok	Vinnitsa(QSL)
11855	Zhigulevsk		
11860	Moskva Novosibirsk('76) Ryazan(?) Kenga('75) Irkutsk('75)	Gor'kiy Krasnoyarsk Yuzhno Sakhalinsk	Nikolayevsk na Amure /(QSL)
11870	Moskva Novosibirsk('76) Sverdlovsk('76) Kenga('75) Kingisepp('75)	Kaunas	Khabarovsk(SPEEDX)
11880	Moskva Irkutsk('76) Vinnitsa('76) Simferopol'('75)	Ivano Frankovsk	
11885		Novosibirsk	
118	Ryazan Irkutsk Zhigulevsk('75) Khabarovsk('75)	Ashkhabad	Yerevan(SPEEDX)
11895	Zhigulevsk Khabarovsk('76)		
11900	Simferopol' Moskva Dushanbe Nikolayevsk na Amure('76) Khabarovsk('75)	Sverdlovsk	L'vov(QSL)
11905	Alma Ata Irkutsk		
11910	Novosibirsk('76) Leningrad('76) Kenga('75) Zhigulevsk('75)		
11915	Nikolayevsk na Amure('76) Petropavlovsk Kamchatskiy('76)		
11920	Moskva Armavir Sverdlovsk('76)		Tashkent(SDXC)
11925	Tashkent		Tbilisi(QSL)
11930	Moskva Sverdlovsk Dushanbe	Armavir	
11935	Tula('75)		
11940	Chita Novosibirsk('76) Kenga('75)	Krasnoyarsk	
11950	Moskva Kiyev	Alma Ata	Khar'kov(QSL)
11955	Moskva	Serpukhov	

<u>Frequency</u>	<u>WRTVH</u>	<u>FBIS</u>	<u>Other</u>
11960	Vladivostok Alma Ata Armavir Blagoveshchensk('76) Zhigulevsk('76) Sverdlovsk('76) Moskva('75) Vinnitsa('75)	Serpukhov Tashkent	Vornezh(QSL) PetropavlovskKam. /(ARDXC)
11965	Kazan'		
11970	Vladivostok('76) Vinnitsa('76) Moskva('76) Kenga('75)		
11975	Moskva Simferopol'('75)		Khar'kov (QSL)
11980	Moskva Alma Ata Simferopol'('76) Khabarovsk('76)	Yerevan	Nikolayevsk na Amure /(QSL)
11985	Moskva Yerevan		
11990	Moskva Vinnitsa Vladivostok('76) Armavir('75) Tashkent('75)	Kyev	
11995	Moskva MOGHILEV('76)	Minsk	
12000	Zhigulevsk Vinnitsa Simferopol' Novosibirsk('76) Yerevan ('76) Leningrad('76) Kenga('75) Kingisepp('75)	Armavir	Moskva(QSL) Tula(QSL)
12005	Minsk		
12010	Petropavlovsk Kamchatskiy Zhigulevsk Armavir Novosibirsk('76) Kiyev('76) Dushanbe('76) Nikolayevsk na Amure('76) Sverdlovsk('76) Khabarovsk('75) Kingisepp('75)		
12020	Moskva Armavir Zhigulevsk Petropavlovsk Kamchatskiy('76)		Riga(NASWA)
12030	Zhigulevsk Vinnitsa Sverdlovsk Moskva('76) Novosibirsk('76) Dushanbe('75)		
12035	Yerevan Moskva('76)		
12040	Armavir Novosibirsk('76) Nikolayevsk na Amure('76) Kenga('75)	Yerevan	
12045	Moskva Leningrad('76) Kingisepp('75)		
12050	Moskva Alma Ata Yerevan Petropavlovsk Kamchatskiy('76)	Khabarovsk Kiyev	Armavir(QSL) Vladivostok(QSL)
12055	Armavir		

<u>Frequency</u>	<u>WRTVH</u>	<u>FBIS</u>	<u>Other</u>
12060	Vologda Moskva Zhigulevsk Nikolayevsk na Amure('76) Novosibirsk('76) Vinnitsa('76) Khabarovsk('75)		Petropavlovsk Kam. /(QSL)
12070	Sverdlovsk Armavir Moskva Novosibirsk('76) Vinnitsa('75) PetropavlovskKam.('75) Kenga('75) Tashkent('75)		Kiyev(SPEEDX)
12080		Moskva	
12110			Serpukhov(QSL)
12120		Vladivostok	
12240	Magadan		
13810		Alma Ata	
14860	Sverdlovsk('75)		
14995		Moskva	
15100	Armavir Moskva Tashkent('76) Nikolayevsk na Amure('76) Leningrad('76) Vladivostok('76) Yerevan('75) Chita('76) Khabarovsk('75) Kenga('75)	Khabarovsk	Krasnoyarsk(SPEEDX)
15105	Yerevan('76) Novosibirsk('76) Zhigulevsk('76) Moskva('76) Dushanbe('76) Sverdlovsk('75)		
15110	Tashkent Vladivostok('76) Novosibirsk('76)	Kiyev	
15115	Moskva('75)		
15120	Armavir Tashkent Petropavlovsk Kam. Alma Ata('76) Yerevan('76) Nikolayevsk na Amure('76) Vinnitsa	Kiyev Frunze Simferopol'	(QSL)Petropavlovsk Kam. Ryazan(QSL) Khabarovsk(ARDXC)
15130	Zhigulevsk Ryazan Vladivostok('76) Kingisepp('75) Simferopol' Armavir('76) Novosibirsk('76) Alma Ata('75) Kenga('75)	Petro. Kam.	Riga(QSL)
15140	Dushanbe('76) Armavir('75)		
15150	Novosibirsk('76) Alma Ata('75) Kenga('75) Dushanbe('76) Armavir('75)	Omsk	
15155	Novosibirsk('76) Kenga('75) Khabarovsk('75)	Krasnoyarsk	L'vov(QSL)
15170	Kiyev Dushanbe Sverdlovsk	L'vov	
15175	Petropavlovsk Kamchatskiy Nikolayevsk na Amure('76) Khabarovsk('75) Moskva('75)		Armavir(QSL)
15180	Moskva('76) Tashkent('75)	Ashkhabad	
15185	Yerevan Irkutsk Sverdlovsk	Ivano Frankovsk	Tashkent(QSL)

<u>Frequency</u>	<u>WRTVH</u>	<u>FBIS</u>	<u>Other</u>
15200	Kalach		
15205	Simferopol'		
15210	Dushanbe	Irkutsk	Alma Ata(NASWA)
	Orsha	Moskva	
	Petropavlovsk Kam.		
	Chita('76)		
15220	Yerevan('75)		
	Zhigulevsk	Dushanbe	
	Armavir('76)		
	Alma Ata('75)		
15230	Zhigulevsk		
	Moskva('76)		
	Voronezh('75)		
15235		Kiyev	
15240	Nikolayevsk na Amure('76)	Blagoveshchensk	Moskva(QSL)
15245	Petropavlovsk Kam.		Nikolayevsk na Amure (QSL)
	Simferopol'('76)		
	Zhigulevsk('75)		
15255	Moskva('76)	Blagoveshchensk	
	Novosibirsk('76)		
	Simferopol'('75)		
15260	Moskva		Kazan'(QSL)
	Yerevan('76)		
	Sverdlovsk		
	Blagoveshchensk('76)		
15265	Moskva	Gor'kiy	
	Novosibirsk('76)		
	Simferopol'('76)		
	Kenga('75)		
	Armavir('75)		
	Yerevan('75)		
	Sverdlovsk('75)		
15275	Ryazan	Tashkent	
	Armavir('76)		
15280	Armavir('75)		
15295	Armavir	Voronezh	Irkutsk(QSL)
	Zhigulevsk		
	Sverdlovsk('75)		
	Vinnitsa('75)		
15305	Sverdlovsk	Kiyev	
15310	Moskva('76)		
	Kiyev('76)		
15320	Yerevan	Armavir	
	Leningrad('76)		
	Kinglsepp('75)		
15330	Tashkent		
	Simferopol'		
	Dushanbe('76)		
	Kenga('75)		
15350	Nikolayevsk na Am.re('76)		
	Leningrad('76)		
	Moskva('76)		
	Tashkent('76)		
	Vologda('75)		
15360	Moskva		
	Irkutsk		
15365	Sverdlovsk('75)		
15370	Armavir('76)		
	Vinnitsa('75)		
15375	Leningrad	Komsomol'sk na Amure	
	Nikolayevsk na Amure('76)		
	Khabarovsk('75)		
	Moskva('75)		
	Armavir('75)		
15385	Armavir	Chita	
	Irkutsk		
	Zhigulevsk		
	Simferopol'('75)		
15395	Alma Ata	Tashkent	
15400	Moskva	Kiyev	
15405	Armavir	Sverdlovsk	Khabarovsk(QSL)
	Yerevan		
	Moskva('76)		
	Vinnitsa('76)		

<u>Frequency</u>	<u>WRTVH</u>	<u>FBIS</u>	<u>Other</u>
15410	L'vov		
15415	Yerevan	Kazan'	
	Bverdlovsk		
	Blagoveshchensk('76)		
15425	Moskva		
	Simferopol'		
	Novosibirsk('76)		
15435	Moskva('76)	Krasnoyarsk Tula	
15440	Ryazan		
	Kiyev		
	Leningrad('76)		
	Armavir('76)		
	Kingisepp('75)		
15445	Nikolayevsk na Amure('76)		
15450	Zhigulevsk	Simferopol'	Serpukhov(QSL) Moskva(QSL) Orenburg(QSL)
15455	Simferopol'		
15460	Zhigulevsk		
	Armavir		
	Novosibirsk('76)		
	Kenga('75)		
	Tashkent('75)		
15470	Moskva		Kalinin(QSL)
	Zhigulevsk		
	Simferopol>('75)		
	Irkutsk('75)		
15480	Zhigulevsk		
	Moskva('76)		
	Leningrad('76)		
	Kingisepp('75)		
15490	Moskva		Orenburg(QSL)
	Armavir('76)		
	Zhigulevsk('76)		
15505	Alma Ata		Sverdlovsk(QSL)
	Tashkent('76)		
	Moskva('76)		
	Orsha('75)		
17700	Yerevan		
	Vinnitsa		
17705	FAR EAST		
17710	Zhigulevsk	Moskva	
	Yerevan('76)		
	Armavir('76)		
17720	Moskva	Kazan'	
	Petropavlovsk Kam.		
	Yerevan('76)		
17730	Serpukhov		
17745	Kiyev	Frunze Kursk	Vladivostok(QSL)
	Alma Ata		
	Dushanbe		
	Blagoveshchensk('76)		
17755	Dushanbe	Tashkent	Krasnoyarsk(SPEEDX) Vinnitsa(QSL)
17760	Simferopol>('75)		
17765	Armavir	Tula	
	Zhigulevsk		
	Yerevan('75)		
	Vinnitsa('76)		
17770		Khabarovsk	
17775	Ryazan		Kazan'(QSL) Armavir(QSL)
	Irkutsk		
	Nikolayevsk na Amure('76)		
	Petropavlovsk Kam.('76)		
	Khabarovsk('75)		
	Kingisepp('75)		
17780		L'vov	
17785	Alma Ata('75)	Frunze	Sverdlovsk(SPEEDX)
17790		Krasnoyarsk	
17795	Serpukhov		

<u>Frequency</u>	<u>WRTVH</u>	<u>FBIS</u>	<u>Other</u>
17805	Armavir('76) FAR EAST('76) Vinnitsa('75) Irkutsk('75) Armavir('75) Khabarovsk('75) Novosibirsk('76)	Tallinn Tbilisi	
17815	Tashkent('76) FAR EAST('76) Kingisepp('75) Armavir('75) Kenga('75)	Frunze Simferopol'	Omsk(QSL)
17820	Vinnitsa Alma Ata('76) Simferopol('75)	Kiyev	
17825	Tashkent('76) Yerevan('76) Dushanbe('75)	Frunze	
17835	Vinnitsa Tashkent Novosibirsk('76) Kenga('75)	Krasnoyarsk Moskva	
17840	Alma Ata('76) Irkutsk('75)	Frunze	Krasnoyarsk(QSL)
17845	Moskva	Sverdlovsk	
17850	Armavir Tashkent('76) Vinnitsa('75)		/(QSL)
17860	Zhigulevsk Nikolayevsk na Amure('76)	Kursk	Komsomol'sk na Amure Khabarovsk(QSL)
17865	Khabarovsk('75)		Komsomol'sk na Amure /(QSL)
17870	Zhigulevsk Vladivostok('76) Yerevan('76) Khabarovsk('75)	Ryazan	
17875	Armavir		
17880	Moskva Vinnitsa('76) Nikolayevsk na Amure('76) Khabarovsk('75)	Petropavlovsk Kamchatskiy	
17885	Vinnitsa		Petro.Kam.(QSL)
17890	Chita Zhigulevsk('76)	Sverdlovsk	
17900	Moskva Vladivostok('76)		Komsom. na Amure /(QSL)
21450	Yerevan('76) Armavir('75)		
21460	Tashkent('76) Alma Ata('76) Tula('75)		
21490	Tula Yerevan('76)		
21505	Tashkent Yerevan	Dushanbe	
21510	Armavir		
21515	Kiyev('76) Simferopol('76) Yerevan('75)	Chita	
21530	Armavir Alma Ata('75)	Frunze	
21540		Kursk	
21565	Simferopol'		
21575	Kiyev Yerevan('75)	Moskva	
21585		Minsk	
21590	Serpukhov('76)		
21600	Moskva	Leningrad	
21610	Riga		
21615		Riga	
21625	Alma Ata	Frunze	
21635	Kalinin		
21645	Armavir		
21680	Yerevan		

<u>Frequency</u>	<u>WRTVH</u>	<u>FBIS</u>	<u>Other</u>
21705	Yerevan		
21725	Tashkent		
21745	Dushanbe('76)	Armavir	
	Tashkent('75)		

SUPPLEMENTARY NOTES

The scheduled 9 and 10 MHz out-of-band frequencies which until the end of 1975 carried the Alma Ata(Kazakh SSR) Republican First and Second Programmes, have been replaced by in-band frequencies. The first Program is currently heard on 9790, 9590, 6180, 5970 and 181 kHz, and the Second Program on 9790, 5960, and 5260 kHz. (See Regional Centre Chart)

Radio Baku's scheduled frequency of 9840 kHz unheard since the end of 1975 has been located on 6135 kHz in parrallel with the scheduled 6110 kHz.(See Regional Centre Chart)

Radio Vilnius' home service First Program (not previously observed on short-wave) has been heard on 9710 kHz from 0700 to approximately 1730 GMT since the 3rd of February, 1976.(See Regional Centre Chart)

A previously unlisted Home Service frequency of 3385 kHz has been monitored relaying the Second Program. From 1030 GMT to 1200 GMT, the program was parallel the SSB feeder noted on 7135 kHz; the program on 3385 was not a feeder; at 1200 GMT, the program switched and was heard parallel to 5015 kHz and other frequencies. The site, other than being in the Far East portion of the USSR, has not been identified.



This is a special publication from SPEEDXTRAS, the Projects Division of SPEEDX, P. O. Box E, Elsinore, California 92330. SPEEDX publishes a monthly DX Magazine of 48 pages or more, in the English language covering Shortwave Listening and the Utility field. A sample copy may be obtained from the above address for US\$1.00 or 6 IRC's.

SUNSET-SUNRISE TIMES FOR SOVIET TRANSMITTING SITES (All times are GMT)

	Jan	Feb	Mar	Apr	May	Jun	Jul	Aug	Oct	Nov	Dec
Alma	1125-0219	1202-0142	1243-0012	1328-0016	1406-2359	1428-2317	1420-2325	1348-2357	1205-0039	1140-0205	1117-0227
Andr	0224-2157	0413-2007	0549-1831	0733-1647	0911-1509	1034-1346	0958-1422	0821-1559	0640-1740	0312-2108	0149-2231
Andz	1151-0230	1235-0156	1302-0119	1344-0037	1418-0004	1438-2343	1430-2351	1401-0020	1323-0058	1204-0217	1144-0237
Arch	1134-0702	1322-0914	1457-0339	1640-0155	1817-0019	1938-2258	1903-2352	1728-0108	1547-0248	1222-0614	1101-0735
Armv	1343-0448	1422-0409	1505-0359	1534-0237	1634-0157	1658-0133	1649-0142	1615-0216	1529-0301	1358-0433	1334-0452
Askh	1255-0318	1325-0248	1359-0248	1436-0136	1507-0106	1525-0048	1518-0055	1452-0121	1417-0156	1307-0306	1248-0325
Baku	1322-0359	1355-0326	1432-0249	1513-0208	1547-0134	1607-0115	1559-0122	1531-0151	1412-0309	1325-0346	1314-0406
Bag	0737-2323	0825-2234	0918-2142	1016-2043	1105-1955	1135-1925	1124-1936	1041-2018	0947-2113	0736-2304	0726-2334
Chim	1158-0246	1235-0210	1312-0131	1357-0047	1433-0014	1454-2349	1446-2357	1415-0228	1334-0109	1251-0152	1150-0253
Chk	0825-0027	0917-2335	1013-2239	1116-2136	1208-2044	1240-2012	1228-2024	1142-2120	1044-2308	0846-0006	0813-0039
Dudh	24HR-NITE	0943-0247	1148-0042	1401-2229	1607-2003	24HR DAY	24HR DAY	1506-2124	1232-2338	1045-0145	0808-0122
Dush	1212-0238	1282-0207	1317-0133	1355-0054	1427-0023	1445-0004	1438-0011	1412-0038	1336-0114	1258-0114	1224-0226
Dzhl	1149-0240	1225-0204	1305-0124	1350-0039	1427-0002	1449-2340	1441-2348	1328-0102	1244-0145	1203-0226	1141-0248
Frnk	1136-0227	1212-0151	1252-0111	1337-0026	1414-2349	1436-2327	1428-2335	1356-0000	1315-0049	1231-0132	1150-0213
Gorn	1239-0529	1343-0425	1449-0319	1602-0206	1705-0129	1745-0023	1730-0038	1634-0134	1525-0243	1414-0354	1305-0503
Gul	1206-0244	1239-0210	1316-0133	1358-0052	1431-0019	1451-2359	1444-0006	1415-0035	1337-0115	1257-0153	1219-0231
Gury	1252-0413	1325-0330	1421-0243	1514-0151	1557-0108	1623-0042	1613-0051	1536-0129	1447-0117	1357-0308	1309-0356
Irku	0900-0105	0953-0012	1050-2316	1153-2213	1245-2120	1318-2047	1306-2100	1220-2146	1121-2245	1020-2346	0921-0044
Ivan	1434-0609	1520-0523	1610-0433	1705-0337	1751-0251	1820-0223	1809-0233	1729-0313	1637-0405	1542-0550	1423-0619
Kala	1322-0510	1411-0201	1504-0328	1603-0229	1651-0140	1722-0110	1710-0121	1628-0204	1535-0259	1436-0356	1342-0450
Kali	308-0605	1413-0459	1521-0352	1636-0237	1740-0133	1821-0051	1806-0107	1708-0204	1558-0315	1445-0427	1355-0538
Kano	1403-0545	1451-0457	1542-0406	1640-0309	1727-0221	1756-0122	1746-0203	1704-0244	1611-0338	1515-0433	1422-0526
Kau	1408-0641	1508-0541	1610-0439	1719-0329	1818-0231	1896-0153	1842-0207	1749-0259	1644-0404	1537-0512	1432-0617
Kazn	1222-0509	1324-0403	1429-0258	1540-0147	1641-0046	1720-0007	1706-0021	1611-0116	1540-0223	1355-0332	1247-0440
Keag	1004-0305	1111-0201	1221-0052	1337-2335	1443-2230	1526-2146	1510-2203	1410-2302	1258-0014	1144-0128	1031-0241
Khab	0714-2245	0759-2200	0848-2111	0943-2016	1028-1931	1056-1903	1046-1913	1006-1933	0915-2044	0822-2137	0732-2227
Kha	1243-0521	1145-0302	1306-0142	1434-0013	1552-2255	1648-2200	1626-2221	1513-2334	1349-0058	1223-0224	1057-0350
Khar	1023-0527	1431-0439	1523-0347	1621-0249	1709-0201	1739-0131	1728-0142	1646-0224	1552-0318	1455-0415	1402-0508
Kiev	1404-0552	1453-0503	1546-0410	1645-0311	1733-0222	1804-0152	1752-0203	1710-0246	1619-0341	1518-0438	1421-0532
King	1319-0652	1430-0537	1549-0423	1711-0300	1823-0183	1912-0059	1853-0118	1718-0224	1629-0342	1509-0302	1350-0621
Koic	1115-0350	1210-0234	1309-0136	1414-0030	1506-2336	1603-2301	1531-2314	1442-0202	1344-0104	1238-0207	1102-0343
Koms	0657-2246	0747-2157	0840-2104	0939-2000	1028-1916	1058-1845	1047-1857	1004-1940	0909-2035	0811-2132	0717-2227
Kras	0226-0212	1023-0109	1134-0004	1246-2251	1348-2150	1428-2110	1413-2125	1318-2220	1209-2328	1059-0038	0951-0146
Kurs	1336-0535	1427-0445	1523-0348	1624-0246	1715-0155	1747-0123	1731-0136	1651-0220	1553-0317	1453-0417	1356-0514
Kyzy	0943-0142	1034-0050	1130-2325	1231-2253	1322-2202	1354-2130	1343-2142	1258-2227	1200-2324	1100-0024	1003-0121
KzOr	1206-0310	1243-0231	1328-0148	1416-0100	1456-0021	1519-2357	1511-0006	1437-0009	1353-0121	1305-0211	1221-0319
Levl	1309-0620	1425-0533	1542-0416	1706-0252	1820-0138	1911-0047	1851-0107	1743-0215	1623-0325	1501-0457	1340-0618
Lvov	1433-0615	1521-0527	1612-0436	1710-0358	1757-0251	1827-0221	1816-0232	1734-0314	1641-0407	1545-0503	1452-0536
Maga	0508-2245	0624-2129	0740-2014	0903-1951	1016-1738	1105-1648	1046-1707	0940-1814	0821-1933	0700-2054	0540-2214
Mikh	1312-0324	1407-0429	1505-0331	1609-0227	1703-0131	1737-0059	1724-0112	1637-0159	1537-0259	1434-0402	1334-0502
Mink	1359-0621	1456-0524	1556-0423	1703-0317	1759-0220	1835-0158	1821-0158	1732-0248	1629-0320	1524-0455	1422-0558
Mogl	1348-0609	1445-0512	1545-0412	1652-0306	1748-0209	1823-0134	1810-0147	1720-0237	1618-0309	1513-0444	1411-0526
Mosk	1308-0551	1410-0449	1515-0344	1626-0233	1727-0132	1806-0053	1752-0107	1657-0202	1550-0309	1441-0418	1333-0546

Times computed for mid-month value

	Jan	Feb	Mar	Apr	May	Jun	Jul	Aug	Sep	Oct	Nov	Dec
Murm	24HR NITE	1320-0615	1522-0414	1731-0204	1950-2346	24HR DAY	24HR DAY	1834-0102	1624-0311	1420-0516	1150-0745	24HR NITE
NarM	0935-0721	1211-0445	1404-0252	1604-0052	1806-2250	24HR DAY	1925-2131	1701-2355	1502-0154	1306-0350	1054-0602	24HR NITE
NlKv	1412-0532	1475-0449	1541-0403	1633-0311	1716-0228	1742-0202	1732-0212	1655-0249	1607-0337	1516-0428	1429-0515	1403-0541
NlKk	0630-2244	0725-2149	0824-2050	0929-1945	1023-1851	1057-1817	1045-1830	0957-1918	0856-2018	0753-2121	0652-2222	0618-2236
NlOv	1011-0245	1111-0149	1214-0045	1321-2333	1423-2234	1500-2211	1446-2210	1354-2210	1248-0008	1131-0116	1035-0221	0957-0300
Omsk	1019-0233	1149-0223	1252-0121	1402-0011	1501-2312	1538-2235	1524-2249	1432-2234	1326-0046	1219-0154	1114-0259	1035-0332
Uren	1219-0420	1311-0328	1407-0232	1509-0130	1601-0208	1633-0006	1621-0018	1535-0104	1437-0202	1337-0302	1240-0359	1207-0432
Oren	1344-0612	1443-0514	1544-0412	1655-0304	1750-0207	1827-0130	1813-0144	1722-0255	1618-0359	1512-0445	1408-0549	1351-0626
Osh	1150-0228	1223-0151	1300-0117	1342-0036	1415-0002	1435-2342	1428-2350	1359-0018	1321-0057	1240-0137	1203-0215	1143-0235
Pala	0435-2205	0549-2051	0703-1937	0825-1815	0936-1704	1024-1616	1006-1631	0901-1739	0744-1857	0624-2016	0506-2134	0417-2232
Pavl	1050-0255	1143-0202	1239-0105	1342-0002	1435-2310	1508-2237	1455-2249	1409-2235	1310-0034	1209-0135	1111-0234	1037-0307
Petp	1070-0340	1207-0240	1309-0138	1419-0029	1517-2350	1555-2252	1541-2306	1449-2359	1344-0104	1236-0211	1131-0316	1053-0344
Peka	0519-2132	0614-2037	0712-1939	0817-1834	0911-1740	0950-1706	0932-1719	0845-1806	0714-1907	0641-2010	0541-2110	0507-2144
Petz	1234-0652	1401-0525	1524-0401	1655-0230	1817-0108	1916-0009	1853-0032	1736-0149	1609-0316	1440-0445	1310-0615	1211-0715
RlKa	1355-0653	1500-0547	1608-0439	1723-0324	1827-0220	1909-0138	1845-0154	1736-0251	1615-0002	1522-0515	1421-0826	1359-0708
Seml	1045-0233	1134-0144	1227-0051	1326-2352	1415-2303	1445-2233	1434-2244	1351-2327	1236-0022	1159-0119	1105-0214	1034-0244
Smf	1411-0516	1450-0437	1534-0354	1622-0305	1702-0226	1725-0202	1717-0210	1643-0245	1558-0330	1511-0417	1426-0501	1402-0525
Star	1335-0513	1422-0426	1513-0336	1609-0239	1656-0153	1724-0124	1714-0135	1633-0215	1541-0308	1446-0403	1354-0455	1325-0524
Sukh	1330-0442	1426-0406	1507-0325	1592-0240	1629-0205	1651-0141	1643-0149	1611-0221	1529-0305	1445-0347	1404-0428	1342-0450
Sver	1129-0426	1235-0320	1342-0215	1457-0058	1601-2354	1643-2305	1627-2328	1529-0026	1401-0135	1307-0249	1156-0359	1114-0442
Sykt	1259-0545	1256-0418	1418-0256	1549-0125	1710-0004	1809-2305	1746-2328	1630-0044	1503-0211	1335-0339	1206-0508	1106-0608
Tall	1334-0708	1449-0553	1604-0438	1727-0315	1839-0203	1928-0114	1909-0133	1803-0239	1645-0357	1525-0517	1405-0637	1315-0727
Tash	1202-0244	1236-0218	1314-0132	1357-0049	1431-0014	1452-2354	1444-0001	1415-0031	1335-0110	1254-0152	1215-0230	1154-0251
Tbil	1338-0423	1413-0348	1452-0310	1533-0226	1610-0151	1631-0130	1623-0138	1553-0208	1513-0248	1431-0330	1352-0409	1331-0431
Tula	117-0542	1415-0444	1516-0343	1623-0236	1720-0139	1756-0103	1743-0116	1652-0207	1519-0310	1443-0416	1340-0319	1304-0555
Tyum	1107-0408	1214-0302	1322-0153	1438-0058	1543-2353	1625-2251	1609-2307	1511-0005	1400-0116	1246-0229	1135-0341	1052-0424
Ufa	1201-0432	1300-0323	1402-0230	1511-0122	1609-0023	1646-2354	1632-0000	1541-0052	1436-0156	1329-0303	1225-0408	1147-0445
ULAN	084-0950	0941-2358	1037-2302	1139-2200	1230-2109	1302-2037	1251-2049	1205-2134	1107-2232	1007-2332	0910-0029	0837-0102
Ural	1237-0432	1328-0341	1422-0247	1523-0146	1631-0056	1644-0025	1633-0036	1549-0121	1432-0217	1353-0316	1257-0412	1226-0444
UzBE	1441-0611	1526-0526	1615-0437	1709-0345	1754-0258	1822-0200	1812-0240	1739-0319	1642-0410	1549-0503	1459-0533	1431-0621
Viln	1404-0634	1503-0535	1605-0433	1713-0324	1811-0226	1848-0149	1835-0203	1743-0254	1639-0359	1532-0506	1427-0610	1350-0648
Vinn	1417-0555	1504-0518	1554-0418	1651-0321	1737-0235	1806-0206	1755-0217	1715-0257	1622-0350	1528-0445	1436-0536	1407-0605
Vlad	0746-2239	0822-2202	0903-2122	0948-2036	1025-1959	1048-1937	1039-1945	1008-2017	0925-2059	0841-2143	0800-2225	0737-2247
Volo	1235-0606	1349-0451	1504-0337	1626-0215	1737-0104	1825-0015	1807-0034	1702-0139	1544-0257	1424-0416	1306-0335	1216-0624
Voro	1324-0523	1415-0431	1511-0336	1612-0234	1703-0143	1735-0111	1721-0123	1639-0208	1541-0306	1441-0405	1344-0502	1312-0535
Yaku	0607-0034	0737-2305	0902-2140	1035-2007	1158-1843	1300-1741	1236-1806	1116-1925	0947-2034	0817-2224	0645-2356	0543-0058
Yere	1344-0420	1417-0347	1454-0310	1534-0230	1608-0156	1627-0137	1620-0137	1552-0212	1514-0250	1434-0350	1357-0407	1337-0427
Yusa	0649-2209	0732-2126	0818-2040	0911-1948	0953-1905	1019-1839	1010-1849	0933-1926	0844-2014	0754-2105	0706-2152	0640-2219
Zhis	1234-0450	1330-0355	1429-0256	1534-0150	1629-0055	1704-0020	1651-0000	1603-0122	1501-0223	1357-0327	1256-0428	1221-0503
Serp	1314-0547	1414-0447	1516-0345	1625-0235	1724-0137	1802-0059	1748-0113	1653-0205	1550-0310	1443-0418	1338-0523	1300-0601
Yraz	1306-0335	1405-0437	1507-0335	1616-0227	1714-0129	1750-0052	1737-0105	1643-0157	1541-0301	1434-0408	1330-0512	1252-0350
Nary	1135-0217	1209-0143	1247-0105	1330-0022	1405-2347	1425-2327	1418-2334	1348-0004	1308-0044	1227-0125	1148-0204	1127-0225

all sites listed ;All Times in GMT; mtd-month values
My thanks to Rich Mitchell for running the computer program

RADIO MOSCOW'S PROGRAMS BROADCAST VIA THE DOMESTIC SERVICE OF THE COUNTRY CONCERNED (C) BBC MS

0600-0650	Mongolian (relay)	Mongolia	First Program
0630-0700	Polish (Su) Concert	Poland	First Program
0900-0930	German (alternate Mon)	East Germany	Berliner Rundfunk
0830-0845	Polish (W, Sa) Concert	Poland	First Program
0830-0900	Romanian (Mon)	Romania	First Program
0840-0900	Polish (Mon, Fri)	Poland	Second Program
0930-1000	Mongolian (relay)	Mongolia	First Program
1130-1200	Mongolian (relay)	Mongolia	Second Program
1230-1300	German (Th)	East Germany	Radio DDR Second Program
1315-1335	Polish (Tu, Fri)	Poland	Second Program
1315-1400	Mongolian (relay)	Mongolia	First Program
1330-1400	Bulgarian (Su)	Bulgaria	Horizont Program
1405-1430	Czech/Slovak (Su)	Czechoslovakia	Hvezda Program
1615-1645	German (4th Mon)	East Germany	Radio DDR First Program
1615-1645	Romanian (Tu, Th)	Romania	Second Program
1530-1600	Bulgarian (not Su)	Bulgaria	Horizont Program

ADDRESSES OF SOVIET RADIO STATIONS THAT TRANSMIT TO FOREIGN COUNTRIES

Radio Moscow, Moscow, USSR
Radio Station "Rodina", Moscow, USSR
Radio Station "Atlantika", June 17th Square 8, Riga, Latvia, USSR
Radio Kiev, Radio Center, Kiev, Ukrainian SSR, USSR
Radio Minsk, 4 Krasnaya Street, Minsk, Byelorussian SSR, USSR
Radio Tashkent, 49 Khorezm Street, Tashkent, Uzbek SSR, USSR
Radio Vilnius, 49 Konarsky Street, Vilnius, Lithuania, USSR
Radio Tallin, 14 Kreizvaldi Street, Tallin, Estonia, USSR
Radio Yerevan, 5 Mravian Street, Yerevan, Armenian SSR, USSR
Radio Tbilisi, 68 Lenin Street, Tbilisi, Georgia, USSR
Radio Baku, 1 M. Gusein Street, Baku 37011, Azerbaijan SSR, USSR
Radio Dushanbe, 17 Ordzhonikidze Street, Dushanbe 73425, Tadzhik SSR, USSR

CREDITS

The authors wish to express their thanks and appreciation to the following individuals and organizations who have contributed to, or provided information for, the "Guide to Soviet Broadcasting".

Bob Bodell
Richard E. Wood
Andy Kerr
Bob Padula
Rumen Pankov
Ed Shaw
BBC Monitoring Service
Australian Radio DX Club, P.O. Box 227, Box Hill, Victoria 3128, Australia
North American SW Association, P.O. Box 13, Liberty, Indiana, 47353, U.S.A.
Eugenia Stepanova, Radio Moscow
The Individual Regional Stations of the USSR

SOURCES

Some of the information contained herein is based upon information from the following sources:

DXing the USSR, June 1975, October 1975, by Bob Padula, published by ARDX.
World Radio and Television Handbook, 1975, 1976
Twentieth Century Russia by Donald W. Treadgold, Rand-McNally 1972.
Rand McNally World Atlas, Imperial Edition.
Foreign Broadcast Information Service
Tropical Band Survey 1975
Guide to Broadcasting Stations 1973
NASWA Russian Language Reporting Form
SDXC, ASWLC

© Reproduction, publication, or broadcast of any material contained herein is prohibited (excepting short excerpts for review, informational, or promotional purposes providing credit to the authors and publisher is given) without prior written permission from SPEEDX, P.O. BOX E, ELSINORE, CALIFORNIA, 92330, U.S.A. © 1976

