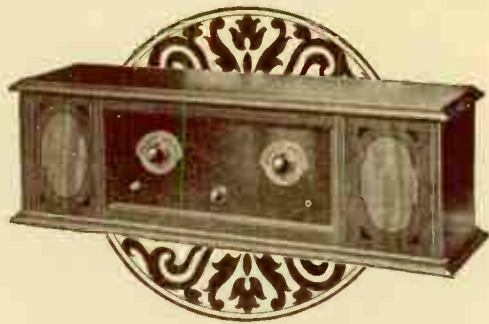


"Radio Built for the Years to Come"



## The Model R Receiver (Rauland-Lyric-Equipped)

In this five-tube receiver are embodied all of the principal improvements in set construction during the past two years. Such features include the famous Rauland-Lyric Transformers in the audio amplifier, Toroid Coils in the radio frequency end, the completely shielded All-American Straight-Line-Frequency Condensers, controlled by two 360° dials, and the unique "Steel Chassis" assembly. A fine walnut cabinet accommodates all batteries required, or the Constant-B, if preferred. The price is \$90, east of the Rocky Mountains.

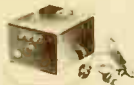
*Rauland-Lyric*



A laboratory-grade audio transformer for the music lover.

Price each \$9.

*Constant-B*



A permanent dependable rectifier (without liquids), providing B current direct from the light socket.

Complete with Raytheon Tube \$45.

*Filtrola*



For eliminating interference. Tuned to any particular wave length, it drops out such station permanently until re-tuned.

Price \$15.

If you desire more detailed information about the above or other All-American radio products, use the enclosed mailing card.

ALL-AMERICAN RADIO CORPORATION  
Pioneers in the Industry E. N. Rauland, Pres.  
Belmont, Tripp, and Kenosha Aves. Chicago, U.S.A.

**ALL-AMERICAN**  
Radio Built for the Years to Come

W·E·N·R



Studio at the  
All-American Factory



Downtown Studio of WENR  
Kimball Hall, Chicago

Radio Built for the Years to Come

Dear Listener:

I want to thank you heartily for the comments you have been good enough to send us on our broadcasts. When we count up the many friends we have made—some of them in far-off countries—we feel encouraged to still greater efforts. I hope you will come to feel that you can always find a good time on our wave length. In order to give it to you, we need all the help you can provide in the way of suggestions as to what you would like to hear.

Sincerely yours,  
FRANK WESTPHAL,  
Director.

## Facts of Interest

The voice of WENR was first heard on the air in April, 1925. The power was at that time only 5 watts, but was shortly increased to 100 watts.

The present 1,000 watt plant of WENR, using the most modern type of Western Electric transmitter, was placed in service August 29, 1925.

WENR has been heard in the farthest corners of the United States and Canada, in Cuba, Mexico, Central America, Alaska, Hawaii and New Zealand.

It is the aim of WENR to provide at each hour a program having a certain definite character, so that whatever may be your musical tastes, you can rely on finding with us at some time during the week the kind of music you enjoy.

Whatever the character of the program, we endeavor to keep our modulation so perfect that our listeners may enjoy unimpaired tone reproduction at all times.

Visitors are welcome during broadcasting hours, at the Kimball Hall Studio.

Listeners who desire written verification of their reception of WENR may receive it on giving us, by mail or by wire, the names of artists or musical selections heard at some specified time. "Ekko" stamps are sent out with our verification whenever the fee of ten cents is enclosed.


## WENR Broadcasting Schedule

Central Standard Time


Daylight Saving Time during summer months.

Wave Length 266 meters      Frequency 1130 kilocycles      Power 1,000 watts

	11	Noon	1	2	3	4	5	6	7	8	9	10	11	Midn't	1	2
SUN.																
MON.																
TUE.																
WED.																
THU.																
FRI.																
SAT.																



Here are the famous All-American Pioneers, under the direction of Frank Westphal, well known orchestra leader and composer. Widespread success has greeted the WENR idea of a dance orchestra in our own studio, suited in personnel and instrumentation for the one purpose of supplying the best of dance music to the microphone.



FRANK WESTPHAL  
Studio Director of WENR,  
and Leader of the All-  
American Pioneers.

### The Rauland-Lyric Trio

This organization of symphony men represents the sincere efforts of WENR to give pleasure to the lover of string ensemble music, as well as to those who prefer entertainment of the lighter type.

### What We Broadcast

The general character of programs is here described. Exact hours are given in the schedule opposite.

11 to 12 Noon	Sacred Programs.
1 to 3 P. M.	Varied entertainment, and talks of general interest on subjects pertaining to the home.
6 to 7 P. M.	Dinner music, featuring the Rauland-Lyric Trio.
8 to 10 P. M.	Popular music, interspersed with dance selections by the All-American Pioneers.
12 to 2 A. M.	Midnight frolics, featuring the All-American Pioneers.
Sundays	
2 to 4 and 6 to 7	Sacred and semi-classical programs.
9:30 P. M. to 12	Popular music programs.