

*Easter  
Number*

1929

THE  
NORTHWESTERN  
PENNSYLVANIA  
BROADCAST  
STATION  
OIL CITY



## *Every Loud Speaker Is **Your** Salesman*

**R**ADIO is an invisible SALESMAN who is permitted to enter any home at almost any time, and, if he presents himself properly, is always welcome—in fact his visits may become a looked for treat.

**R**ADIO is the new painless method of educating the public on the virtues of a product or business.

**R**ADIO is the VOICE of your business—you can't afford to remain silent these days—if you do you will be saying, "I am a little behind," which is another way of saying "I have allowed others to get a little ahead."

**I**S your competitor using RADIO? If he is, he is beating you to it. This is a TRUTH whether you are willing to admit it or not—the biggest businesses in the country have recognized this.

**I**N RADIO publicity, remember, you are using the SPOKEN WORD—you are TELLING about your product. It is a PERSONAL recommendation.



# *"We too - - Aim to Please"*



THE broadcast station of today so arranges its programs as to please the largest number of their audience. It must be borne in mind that in this vast audience there are those who care for nothing but the classical in music—others who much prefer jazz—still others who like best the sketches and novelty features.

It has been found after careful survey of a cross section of the country's radio audience that dance music pleases a larger percentage of the radio audience than any other single type of broadcasting program. It provides both casual and active entertainment.

The radio receiver may be turned on while the usual activities of the home are continued undisturbed, or the program may be used to provide the main feature of the evening's entertainment. The most people who enjoy and understand classical music also enjoy good jazz music—those who object to and dislike popular music are a small proportion of the radio audience. Persons whose musical taste is so advanced that the very thought of popular music irritates them are rarely, if ever, radio listeners.

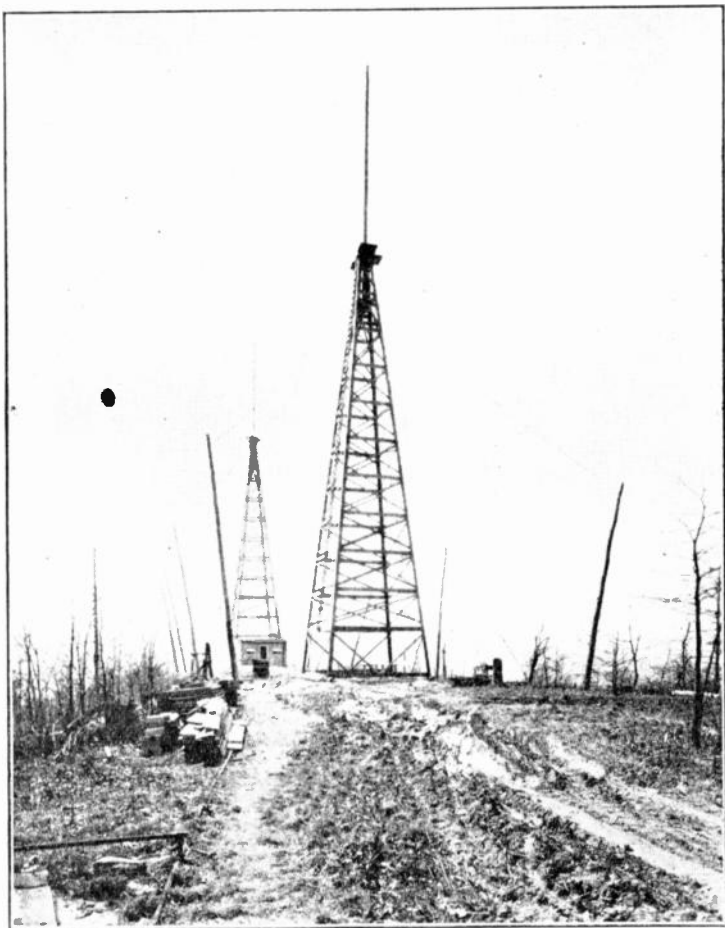
The fairly constant volume of dance music, which suits it to easy microphone pick-up, further recommends it. It may be broadcast from the studio or picked up from a remote point with equal facility.

Apparently the easiest way to satisfy the majority of the radio audience is to give them dance music. This will explain why we, of WLBW, provide popular dance music on the majority of programs.

On the other hand, we too, realize that all jazz without the proper interspersing of the classics or the dramatic features, would lose a very sizable portion of our radio audience, even though they prefer popular dance music to any other. Realizing this, we have endeavored to make our programs well-balanced, and you have only to refer to the center pages of this booklet to see that a well-balanced program has been provided for our listeners.

To create that friendly feeling between the staff of WLBW and our invisible audience, we publish this booklet and trust that we may, from time to time, explain to those who are interested in our programs the "why's" and "wherefore's" of our various features, and we want you always to bear in mind that—"We too, Aim To Please."

RADIO STATION WLBW.



## “HIGH UP ON A HILL TOP”

The title of one of our latest songs may well be applied to the unique towers of WLBW. For the towers pictured above stand on the top of a mountain carrying an antennae which is 1430 ft. above the sea level. Radio engineers have agreed that both the height and the construction of these towers give the maximum of efficiency to the station. There probably is no other station of the same power anywhere that reaches out as far as WLBW.

The towers are of All Wood construction patterned after the old fashioned Pennsylvania oil derrick and have a forty-foot mast protruding skyward from each tower. Even the long guys shown in the picture from tower and masts are also all wood, being made of hickory “sucker rod,” which are also used in the oil industry.

This unique tower construction was designed by W. S. Paca, General Manager of the Northwestern Pennsylvania Broadcasting Station at Oil City, Pa.



## And Here They Are - - AMOS 'N ANDY



"Amos and Andy" whose voices are listened to nightly discussing the affairs of the "Fresh Air Taxicab Company, Incorporated," and other vital matters are in real life really two regular fellows who have been friends and have worked together for eight or nine years.

"Amos," whose real name is Freeman F. Gosden, is tall and blond and is a genuine Southerner, having been born and raised in Richmond, Virginia. "Andy" also fair, was raised in Peoria, Illinois, and is privately known as Charles J. Correll. Both of the boys now live in Chicago and are happily wedded to charming wives.

Each afternoon they "go into a huddle" and it is at this time they think and write out their next "Amos and Andy" episode. Much of the material they get out of their long acquaintance with colored people. Mr. Gosden drawing on his boyhood home in Virginia. Mr. Correll's people were also originally from the South so the dialect comes naturally to him.

The two men first went on the air in 1925 as "Sam 'N Henry," then they changed names and studios and have worked out a type of short radio entertainment with a style and technique all its own.

They saw immediately that it would not do to

have their act in the form of a vaudeville act where they would have to depend on "Gags." They build up their episode to a point where they have a feeling of intimacy with their audiences.

"Gags" each night, even the best of them, would soon grow stale, so when they write their episode, if a joke suggests itself in their dialogue, out it goes. Nothing of a suggestive nature is ever allowed to creep into their line of talk and this feature has brought them much favorable comment from countless listeners, particularly members of the clergy.

The boys receive an enormous amount of fan mail, even though they have never asked their listeners to write to them. This fan mail is given personal attention by "Amos 'N and Andy" as it is through this medium they are able to feel the pulse of their listeners and know what they want. Messrs. Correll and Gosden recently engaged in a new venture. On March 1st, they brought out a book about themselves, telling all the professional secrets, such as how they take the various parts when the episode calls for several characters.

The trick, they say, is to remember which voice belongs to each character. The book contains a number of pictures and interesting information regarding these two popular entertainers.



# Do You Know?

1. Who made the first Radio Tour in the history of Broadcasting—a Tour of thirty-five stations? Whose idea was it—who financed it?

2. Who has entertained at Radio stations 2LO London—the Eiffel Tower, Paris—



PWX, Havana—KGU, Honolulu, besides over three hundred other stations?

3. Who has appeared before more microphones than any other Entertainer?

4. Who is really the Pioneer Radio Entertainer of them all and who when there were only three stations on the air was known as "The K.Y.W. Music Maker?"

5. Who received the first advertising contract in radio history? A three year contract as the original Eveready Entertainer?

6. Who had the first radio marriage—the first hook-up in radio history (for a private citizen) a net-work of four stations from WEAJ including WGN, Chicago?

7. Who has received over two hundred thousand letters from radio fans all over the world in his six years before the "Mike?"

8. Who made the first and the only world tour of Broadcasting history entertaining in every principal radio station in the U.S.A., Hawaii, Canada, Cuba, England, Scotland, Ireland and France?

9. Who has written over one thousand songs, words and music of his own composition?

10. Who wrote the words and music and first published the song "Underneath the Mellow Moon" a song which sold over one million records and seven hundred thousand copies—a tremendous waltz ballad hit?

11. Who wrote the words and music, first published and popularized "It Ain't Gonna Rain No Mo'," a song which sold over two million records and one million copies—one of the greatest popular hits of all time?

12. Who is now at the head of the Music Publishing business that bears his name?

13. Who sang "It Ain't Gonna Rain No Mo' " on Victor Records—the largest vocal record in the history of the record business?

14. Who first introduced the "whispering" style to records and radio when he sang his own composition "Land of My Sunset Dreams" on Victor Records with a sale of over three hundred and sixty thousand?

15. Who first introduced the "vocal squeals" or "throat noises" to records and radio?

16. Who first introduced the negro dialect "two-voice dialogue" stories to records and radio, creating a character whom he labelled "Henry?"

17. Who originated and popularized the expressions "Yes Suh!" "Hello Folks!" and "Hey-hey!"

18. Who first introduced the "crooning style" to radio and records and who at that time was known as the "traveling troubador?"

19. Who first introduced the "chatter" style of vocal orchastration of popular songs to records and radio, when he sung "Down Kentucky Way" for Brunswick Records?

20. Who has done more to stimulate the sales of Ukuleles in the United States than any other one man?

21. Who placed the first Ukulele on the market bearing a signature a "Red Head" which sold over seventy thousand, is still selling strong?

22. Who was known to Vaudeville and Orchestra work as "The Singing Xylophonist" in 1917, '18, '19, '20, except for the time he spent over in France with the A.E.F.

23. Who is today headlining the Keith-Orpheum circuit receiving an ovation at every appearance, breaking house records as a box office attraction and stopping shows everywhere?

24. Who is the tall, lanky, red-headed young American of Scotch-English descent who, on his own initiative, reached the very pinnacle of success in his chosen art when he was twenty-seven years of age, because he originated and created instead of imitating?

25. Who is it that after having had as much world-wide favorable publicity as any other popular entertainer still wears the same sized hat?

26. Who has been in the music business fifteen years and whose fans have purchased over twenty-one million music products bearing his name?

**THERE'S ONLY ONE ANSWER**

**WENDELL HALL**

**"The Red-Headed Music Maker"**

## **THE PETROLEUM TELEPHONE CO.**

**Presents For Your  
Enjoyment**

**The Extension Tele-  
phone Entertainers**

**Each THURSDAY Evening**

**From Station**

**W L B W**

**AT 6:00 O'CLOCK**

**We cordially invite you to**

**TUNE IN !**

## **K R A M E R Auto Body Dep't.**

**EXCEL IN THE FOLLOWING**

**Van and Truck Bodies**

**Full line Martin-Parry Stand-  
ardized Bodies**

**Wrecked Auto Bodies made  
Like New**

**Auto Refinishing**

**Auto Upholstering—New  
Top Coverings**

**Auto Glass furnished  
and Installed**

**Auto Parts Renickled**

**Kramer Wagon Co.  
OIL CITY, PA. PHONE 169**





*The Father  
of Radio*

## THE BIRTH OF THE VACUUM TUBE



*Written Especially for  
"The Announcer"*

*by*

**DR. LEE DEFOREST**

*Chief Consulting Engineer*

*DeForest Radio Co.*

I am often asked to tell how it was that I came to invent the audion, or three element vacuum-tube. It is a simple story—a story which goes back to the year 1900 when I was Associate Editor of "Western Electrician." Each night after my work at the office had been finished, I would go back to my rooms to spend a few hours with my hobby—a toy known as wireless telegraphy. Now, one of my most prized possessions was a spark-coil, and the pronounced, crashing spark which it emitted never failed to fascinate me. I soon became conscious, however, of what was at first an inexplicable phenomenon, and it was this: when my spark-coil was working, the Welsbach gas mantle which lighted my room flickered and sputtered constantly, but burned with a steady full brilliance the moment I turned the coil off.

For some time, I was at a loss to explain the curious circumstances which I had observed, but I was vaguely conscious that the spark discharge exerted a mysterious but none the less positive influence on the heated particles of the gas burner. Further experiments brought me to the conclusion that this startling effect was simply the result of the action of sound-waves. In the meantime, however, I saw the possibility of applying the principle of this apparent phenomenon to the detection of wireless signals—a problem which was then engaging the attention of many experimenters. Accordingly, I left the employ of the Western Electric Company and went to work independently with the idea of making a heated gas wireless detector. Partial success attended my efforts in this direction, for in 1903 I was able to produce the first detector of this kind. I was soon to find, however, that although this device worked well enough as a laboratory set-up, the field of its commercial application was all too limited.

Nevertheless, I refused to be discouraged by my first reverse, and gave the problem some careful thought and study. The result

was that I decided to enclose the heated gas in an evacuated glass bulb and to employ a filament as the heat-source. After many trials and tribulations, I managed to secure the services of an independent glass-blower (the big companies had no time to interest themselves in my fantastic experiment), and this gentleman, McCandless by name, agreed to make up a few experimental vacuum-tubes for me. These first tubes, of course, were of the two-element variety, with carbon filaments and platinum plates, or "wings" as they were then known.

I connected the antenna to the platinum plate, the ground to the carbon filament, and the telephones and the battery across these two elements. I soon found, however, that I had to shunt or by-pass much of the signal energy through the telephone and battery circuit, and that I could do this only with a very considerable loss in efficiency. It was at this point that the idea of a third element occurred to me, thus marking the first constructive step toward the development of the present-day vacuum tube. In the beginning I made use of a band of tin-foil, wrapped around the outside of the round glass bulb, but this soon proved inadequate. Later, I essayed a coiled wire placed inside the bulb itself, thus coming one step nearer success. Finally, after various arrangements, I decided upon a zigzag bit of wire, enclosed in the bulb and placed directly between the filament and the plate. Having little imagination, I called the third element the "grid" because of its similarity to a roaster grid. And "grid" it has remained ever since.

My first three element vacuum-tube was made in 1906, and I named it the "Audion." How this crude device was developed, perfected and improved is a matter of comparatively recent history and my readers are doubtless familiar with the story. With the advent of radio broadcasting in 1920, my once despised Audion quickly became one of



the most sought-after of all commodities. It was refined by engineers in hundreds of research laboratories and it was produced in thousands of factories in fantastic quantities. Returning from Germany (where I had been experimenting with my talking motion picture system, the Phonofilm) in 1921, I saw the once precarious experiment of radio broadcasting in the process of evolving into a national institution.

Recently, convinced that the vacuum tube is the real foundation of the art of broadcasting, I turned once again to its development. Today, at our plant in Jersey City, I have a corps of highly-trained and efficient vacuum-tube specialists constantly working with but one idea in mind. And that idea is to produce a vacuum tube which shall stand for all time as a distinct contribution to the radio art.

## HUPMOBILE 6 *and* 8



## STEWART TRUCKS

4 *and* 6



CONSTRUCTED OF ALL FIRST CLASS MATERIAL

This is one of the principal reasons for  
the low cost of operation

Beautiful in Appearance   Comfortable to Ride In  
Easy to Handle

## BOYLE MOTOR CO.

312 SENECA STREET  
OIL CITY, PA.

N. B. MYERS GARAGE  
FRANKLIN, PA.

# CHARLES "CHIC" SALE

*the Famous Comedian*  
*to Broadcast from WLBW*



IS STAR OF "GAY PAREE"  
WHICH PLAYS AT THE  
COLONEL DRAKE THEATRE

*April 9th*

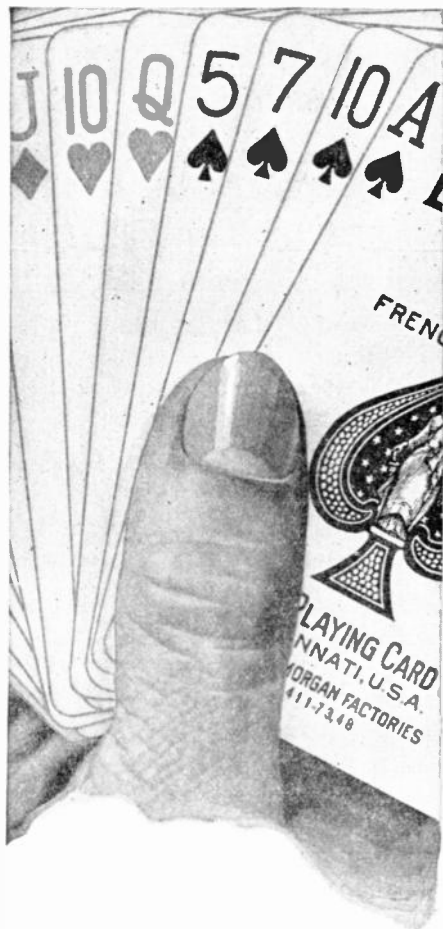
Members of the WLBW Radio audience will have the opportunity of supplementing their Radio entertainment with the privilege of seeing the inimitable Charles "Chic" Sale, famous comedian of the big musical comedy "Gay Paree" which comes to the Col. Drake Theatre in Oil City, Tuesday, April 9th.

"Gay Paree" will be presented twice on this date with a matinee beginning at 2:15 p. m., and the evening performance at 8:15 p.m. The matinee performance was arranged for, after considerable effort upon the part of the management of the Drake Theatre, especially for the out-of-town patrons, many of whom would be unable to attend the Theatre in the evening.

Although "Chic" Sale does not ordinarily broadcast from stations outside of New York and then only on Chain programs, efforts are being made to have Mr. Sale broadcast over WLBW some time during the one day which he is in Oil City.

"Gay Paree" is one of Messrs. Schubert's biggest and finest productions. It is a musical comedy with a cast of more than 100 persons, headed by "Chic" Sale, Frank Gaby, Stanley Rogers, Silvia Froos, Franklin Baetty, The Kelo Brothers, The Berkohoff Troupe, and many other famous actors, actresses, and Broadway favorites.

The 39 big scenes include such a wealth of singing, dancing, and comedy that every one is guaranteed "One Grand and Glorious Time," when "Gay Paree" comes to the Drake Theatre.



## Preferred

for their big indexes—fine finish  
—easy dealing—lasting quality  
—by the experts who broadcast  
and the players who listen to  
the Weekly Radio Bridge Games  
from Station WLBW.

The U. S. Playing Card Company  
Cincinnati, U. S. A. Windsor Canada  
Co-Sponsors with Auction Bridge Magazine,  
19 W. 44th Street, New York City, of

# BRIDGE *by* RADIO



*Single and Two-Pack Cases*

# BICYCLE *and* CONGRESS PLAYING CARDS



MR. WILLIAM LANTZ

**C**REMONA, a town of considerable size in Italy was for a duration of two centuries, from 1550 to 1750, the seat of the famous Cremona school of violin makers.

The shape and construction of the violin, and the other instruments belonging to the family, having been finally settled by the great makers of Brescia, Casparo da Salo and Paola Maggini, it was at Cremona that the last step in the art of violin making was made, which led to the point of perfection from which no further progress has yet been possible or perhaps desirable. Antonio Stradivarius and Josef Guarnerius are the greatest of all and their instruments have never been surpassed.

The violin pictured in the hands of our leader, Mr. William Lantz, above, is a genuine Guarnerius and was made

## *Our Ensemble Leader and His "Guarnerius"*



in the year 1738 and it is quite natural that he should prize it so highly. It has a commercial value of from \$3500 to \$5000 and it is the one Mr. Lantz uses in his dinner hour ensemble every evening at 6 o'clock.

William Lantz, at an early age started violin lessons with his father who at that time was first solo trumpet with Walter Damrosch, Sr., in Gilmore's Band and Liberatto Band.

Having sufficiently mastered the violin as to take his place at a very early age in local orchestras "Bill" as he is best known decided that as a part of his education to go to California where he had no difficulty in securing a place in Grauman's Million Dollar Theatre Orchestra, under Guitterson, one of the country's foremost conductors.

Bill then decided to move to New York and played in Loew's Broadway Theatre in Brooklyn. His artistry soon caused his transfer to Loew's State Theatre in New York which was considered then as it is now the "pet" of this great theatrical magnate.

After many years of playing with leaders of international renown Mr. Lantz returned to his home in Oil City where he has entertained in the various theatres. He was founder and organizer of the Oil City Symphony Orchestra. Tune in any evening, except Sunday and hear "Bill" Lantz as he leads the WLBW Ensemble with his Guarnerius violin.



## *Friends . . .* *Meet Our* *Studio Directress*



**M**EET the little lady whom you seldom see but who is responsible for the arrangement of all studio programs from WLBW. We want you to know about Dorothy Paca, who besides being Studio Directress of this station has won many laurels as a musician. Miss Paca was born in Baltimore, Maryland but came to Pennsylvania with her parents when she was less than a year old. She received her early education in Oil City, being graduated from the high school here. Following her graduation, Miss Paca entered Notre Dame Seminary in Baltimore and there, under the guidance of Professor O'Denhal, quickly developed as a soprano soloist. Under this able direction—Prof. O'Denhal having been the discoverer of no less a voice than Mable Garrison—which continued for several years, Miss Paca was induced to take up voice seriously, and went from Baltimore to New York where she was instructed by Mme. Renaud. A great honor was conferred upon Miss Paca when she was selected by Governor Ritchie of Maryland to represent that state in the conservatory of music opened by France as a compliment to America, at Fontaine Bleau. During her year at this con-



MISS DOROTHY PACA

servatory. Miss Paca justified the Maryland Governor's choice by taking the first prize certificate at the end of the year, a certificate signed by some of the world's greatest musicians. Following concert appearances in Paris, Miss Paca returned to New York City where she continued her studies and concert work, and where she specialized in instruction study under Prowscowsky. While in New York she was one of the first soprano soloists to be heard over the air, having sung for WJZ and later for WEAJ.

With this musical background Miss Paca gives her talents and training to the arrangement of the popular WLBW studio programs.

# APRIL BROADCAST FROM WLBW

1929

## SUNDAYS, APRIL 7, 14, 21, 28

- |   |  |
|---|--|
| 3:00 P.M. Symphonic Hour, C.B.S.  | 7:11 P.M. Amos N' Andy.                          |
| 4:00 P.M. Cathedral Hour, C.B.S.  | 7:20 P.M. News Flashes, Oil City Derrick.        |
| 5:00 P.M. Watchtower Program, I.B.S.A   | 7:30 P.M. Studio Program.                        |
| 5:30 P.M. Church Services, 10th Presby-<br>terian Church, Phila. Pa.,<br>C.B.S. | 8:00 P.M. La Palina Hour, C.B.S.                 |
|   | 8:30 P.M. Sonatron Program, C.B.S.               |
| 6:00 P.M. Harvey Fritz, Correct Time.   | 9:00 P.M. Majestic Theatre of the Air,<br>C.B.S. |
| 6:02 P.M. To be announced.  | 10:00 P.M. De Forest Audions, C.B.S.             |
| 7:00 P.M. Studio program.   | 10:30 P.M. Around the Samovar, C.B.S.            |
|   | 11:00 P.M. Correct Time.                         |

## MONDAYS, APRIL 1, 8, 15, 22, 29

- |  |  |
|--|--|
| 11:50 A.M. Aunt Sammy's Housekeepers<br>Chat.      | 6:03 P.M. WLBW Ensemble Hour.<br>Dinner Music.         |
| 12:00 M. Luncheon Hour of Music.                   | 7:00 P.M. News Flashes, Oil City Derrick.              |
| 12:20 P.M. Logan & Bryan, Stock Reports            | 7:11 P.M. Amos N' Andy.                                |
| 12:50 P.M. News Herald Bulletins.                  | 7:20 P.M. Studio Recital. Announcements.               |
| 1:00 P.M. Harvey Fritz, Correct Time.              | 7:30 P.M. Tone Pictures, C.B.S.                        |
| 1:02 P.M. Ronald Corbett Co., Weather<br>Forecast. | 8:00 P.M. Kansas School Daze, C.B.S.                   |
| 1:04 P.M. Latonia Theatre Sketches.                | 8:30 P.M. CeCo Couriers, C.B.S.                        |
| 3:00 P.M. Radio Dealers Hour of Music.             | 9:00 P.M. Physical Culture Magazine<br>C.B.S.          |
| 5:00 P.M. Popular Melody Time.                     | 9:30 P.M. Warner Brothers Vitaphone<br>Jubilee, C.B.S. |
| 5:55 P.M. "Something About Everything."            | 10:00 P.M. Robt. Burns Panatela, C.B.S.                |
| 6:00 P.M. Harvey Fritz, Correct Time.              | 11:00 P.M. Correct Time. Announcements.                |
| 6:02 P.M. Ronald Corbett Co., Weather<br>Forecast. |  |

## TUESDAYS, APRIL 2, 9, 16, 23, 30

- |  |  |
|--|--|
| 10:00 A.M. Ida Bailey Allen, C.B.S.                | 6:03 P.M. WLBW Ensemble Hour,<br>Dinner Music.   |
| 11:50 A.M. Aunt Sammy's Housekeepers<br>Chat.      | 7:00 P.M. News Flashes, Oil City Derrick.  |
| 12:00 M. Luncheon Hour of Music.                   | 7:11 P.M. Amos N' Andy.  |
| 12:20 P.M. Logan & Bryan, Stock Reports            | 7:20 P.M. Studio Recital, Announcements.   |
| 12:50 P.M. News Herald Bulletins.                  | 7:30 P.M. MoBo Entertainment.  |
| 1:00 P.M. Harvey Fritz, Correct Time.              | 8:00 P.M. Political Talk, C.B.S.   |
| 1:02 P.M. Ronald Corbett Co., Weather<br>Forecast. | 9:00 P.M. Old Gold Hour, presenting Paul<br>Whiteman and His Orchestra<br>C.B.S.                                 |
| 1:04 P.M. Latonia Theatre Sketches.                | 10:00 P.M. Curtis Institute of Music Pro-<br>gram, (April 2-16-30) The Voice<br>of Columbia, (April 9-23) C.B.S. |
| 2:00 P.M. Meadville Business Men's Hour.           | 11:00 P.M. Baby Ruth's Royal Canadians,<br>direction Guy Lombardo,<br>C.B.S.                                     |
| 2:45 P.M. Theronoid Period.                        | 12:00 Mid. Correct Time.   |
| 3:00 P.M. Radio Dealers Hour of Music.             |  |
| 5:00 P.M. Popular Melody Time.                     |  |
| 5:55 P.M. "Something About Everything."            |  |
| 6:00 P.M. Harvey Fritz, Correct Time.              |  |
| 6:02 P.M. Ronald Corbett Co., Weather<br>Forecast. |  |

## WEDNESDAYS, APRIL 3, 10, 17, 24

- |   |  |
|---|--|
| 10:00 A.M. Ida Bailey Allen Home Makers<br>Club, C.B.S. | 1:02 P.M. Ronald Corbett Co., Weather<br>Forecast. |
| 10:30 A.M. Jewell Hour, C.B.S.                          | 1:04 P.M. Latonia Theatre Sketches.                |
| 11:00 A.M. Franklin Business Men's Hour.                | 3:00 P.M. Radio Dealers Hour of Music.             |
| 12:00 M. Luncheon Hour of Music.                        | 5:00 P.M. Popular Melody Time.                     |
| 12:20 P.M. Logan & Bryan, Stock Reports                 | 5:55 P.M. "Something About Everything"             |
| 12:50 P.M. News Herald Bulletins                        | 6:00 P.M. Harvey Fritz, Correct Time.              |
| 1:00 P.M. Harvey Fritz, Correct Time.                   | 6:02 P.M. Ronald Corbett Co., Weather<br>Forecast. |

# APRIL BROADCAST FROM WLBW

1929

## WEDNESDAYS, APRIL 3, 10, 17, 24

- |  |   |
|--|---|
| 6:03 P.M. WLBW Ensemble Hour.<br>Dinner Music. | 9:30 P.M. La Palina Smoker, C.B.S.        |
| 7:00 P.M. News Flashes, Oil City Derrick       | 10:00 P.M. Kolster Radio Hour, C.B.S.     |
| 7:10 P.M. To be announced.                     | 10:30 P.M. Daguerreotype, C.B.S.          |
| 8:00 P.M. Hank Simmons Show Boat, C.B.S.       | 11:00 P.M. Correct Time. Announcements.   |
| 9:00 P.M. Van Huesen Program, C.B.S.           | 12:00 Mid. Organ Favorites, Medora Weaver |

## THURSDAYS, APRIL 4, 11, 18, 25.

- |   |   |
|---|---|
| 10:00 A.M. Ida Bailey Allen Home Makers<br>Club, C.B.S. | 6:02 P.M. Ronald Corbett Co., Weather<br>Forecast.        |
| 11:50 A.M. Aunt Sammy's Housekeepers<br>Chat.           | 6:03 P.M. Petroleum Extension Telephone.<br>Dinner Music. |
| 12:00 M. Luncheon Hour of Music.                        | 7:00 P.M. News Flashes, Oil City Derrick.                 |
| 12:20 P.M. Logan & Bryan, Stock Reports                 | 7:11 P.M. Amos N'Andy.                                    |
| 12:50 P.M. News Herald Bulletins.                       | 7:20 P.M. Studio Recital. Announcements.                  |
| 1:00 P.M. Harvey Fritz, Correct Time.                   | 7:30 P.M. Studio Program.                                 |
| 1:02 P.M. Ronald Corbett Co., Weather<br>Forecast.      | 8:00 P.M. Sweethearts, C.B.S.                             |
| 1:04 P.M. Latonia Theatre Sketches.                     | 8:30 P.M. Then And Now, C.B.S.                            |
| 2:45 P.M. Theronoid Period.                             | 9:00 P.M. Aunt Jemima, C.B.S.                             |
| 3:00 P.M. Radio Dealers Hour of Music.                  | 9:30 P.M. Sonora Hour, C.B.S.                             |
| 5:00 P.M. Popular Melody Time.                          | 10:00 P.M. The Columbians, C.B.S.                         |
| 5:55 P.M. "Something About Everything".                 | 10:30 P.M. Musical Episode, C.B.S.                        |
| 6:00 P.M. Harvey Fritz, Correct Time.                   | 11:00 P.M. Correct Time.                                  |

## FRIDAYS, APRIL 5, 12, 19, 26.

- |   |  |
|---|--|
| 10:00 A.M. Ida Bailey Allen Home Makers<br>Club, C.B.S. | 6:00 P.M. Harvey Fritz, Correct Time.                          |
| 10:30 A.M. Rit Fashion Review.                          | 6:02 P.M. Ronald Corbett Co., Weather<br>Forecast.             |
| 11:50 A.M. Aunt Sammy's Housekeepers<br>Chat.           | 6:03 P.M. WLBW Ensemble Hour,<br>Dinner Music.                 |
| 12:00 M. Radio Home Bazaar, C.B.S.                      | 6:45 P.M. Enna Jettick Melodies, C.B.S.                        |
| 12:15 P.M. Luncheon Hour of Music.                      | 7:00 P.M. Bringing Fifth Ave. to N. W.<br>Penna.—Helen Gordon. |
| 12:20 P.M. Logan & Bryan, Stock Reports                 | 7:05 P.M. News Flashes, Oil City Derrick.                      |
| 12:50 P.M. News Herald Bulletins.                       | 7:11 P.M. Amos N'Andy.   |
| 1:00 P.M. Harvey Fritz, Correct Time.                   | 7:20 P.M. Studio Recital, Announcements.                       |
| 1:02 P.M. Ronald Corbett Co., Weather<br>Forecast.      | 7:30 P.M. Studio Recital.                                      |
| 1:04 P.M. Latonia Theatre Sketches.                     | 8:00 P.M. Close-Ups, C.B.S.                                    |
| 2:00 P.M. Franklin Business Men's Hour.                 | 8:30 P.M. Veedol Hour, C.B.S.                                  |
| 3:00 P.M. Radio Dealers Hour of Music.                  | 9:00 P.M. True Story Hour, C.B.S.                              |
| 5:00 P.M. Popular Melody Time.                          | 10:00 P.M. Kodak Hour, C.B.S.                                  |
| 5:55 P.M. "Something About Everything."                 | 10:30 P.M. Night Club Romances, C.B.S.                         |

## SATURDAYS, APRIL 6, 13, 20, 27.

- |  |  |
|--|--|
| 11:00 A.M. Meadville Business Men's Hour.            | 5:55 P.M. "Something About Everything."            |
| 12:00 M. Luncheon Hour of Music.<br>Request Program. | 6:00 P.M. Harvey Fritz, Correct Time.              |
| 12:20 P.M. Logan & Bryan, Stock Reports              | 6:02 P.M. Ronald Corbett Co., Weather<br>Forecast. |
| 12:50 P.M. News Herald Bulletins.                    | 6:03 P.M. WLBW Ensemble Hour,<br>Dinner Music.     |
| 1:00 P.M. Harvey Fritz, Correct Time.                | 7:00 P.M. News Flashes, News Herald.               |
| 1:02 P.M. Ronald Corbett Co., Weather<br>Forecast.   | 7:11 P.M. Amos N'Andy.                             |
| 1:04 P.M. Latonia Theatre Sketches.                  | 7:20 P.M. Studio Recital. Announcements.           |
| 3:00 P.M. Radio Dealers Hour of Music.               | 8:00 P.M. Correct Time.                            |
| 5:00 P.M. Popular Melody Time.                       |  |

# Columbia System

## JOHN STEEL

John Steel, well-known American tenor, is one of the most popular stars of musical shows and the concert stage. He has appeared in many productions in the past few years but his greatest successes were made in the Ziegfeld Follies and the Music Box Review in which he played the leading male roles.

Although he has had much experience on the stage, he has not reached his thirties. He is good-looking but his personality is a modest one. At present he is making New York his home, living in the exclusive Park Cresent Hotel on Riverside Drive.

## CHARLES HACKETT

There are but few people, even slightly interested in music, who have not heard of Charles Hackett. Principal tenor of the Chicago Civic Opera Company, his rise has been meteoric, but, for some time past, he has taken his place as a fixed star. Mr. Hackett made his memorable debut here in opera in 1919 at the Metropolitan Opera House, in the "Barber of Seville," and since then he has sung in opera and in concert in all of the principal music centers of the world. His first public appearance was as a singer in a Worcester High School Glee Club, and this was followed by a position as soloist in a Boston Church Choir. Making the most of his small engagements, he set out for Italy, and, after a debut in opera in Genoa, was immediately engaged to sing in the famous La Scala in Milan. From that time on he has gone steadily forward, until he is now recognized as one of the leading operatic tenors of this country.

## THOMAS MUIR

Thomas Muir, the well-known tenor, was born in America but studied most of his music in Italy and sang while abroad in the Palermo Opera. He has made many radio appearances, but is chiefly known for his appearance as guest soloist with the Philadelphia, Detroit, Russian and Cincinnati Symphony Orchestras. He also sang in the Philadelphia Civic Opera Company, where his reception was particularly marked for its enthusiasm and appreciation.

## GENE AUSTIN

Gene Austin, famous tenor, is entitled to the proud title of being the record-breaking Victor artist. This does not mean that he has destructive tendencies, but merely that the Victor Company have sold more of his records than of any artist who records for them. Discs of "Muddy Water," "Someday Sweetheart" and other favorites have been gobbled up as soon as recorded, and his latest current hits, have been added to his popularity.

There is scarcely a home in any part of the country where Gene Austin's name is not known, for in addition to being a popular singer, he is the composer of those well-known songs "When My Sugar Walks Down The Street," "How Come You Do Me Like You Do," and "Voice Of The Southland."

He has recently appeared over the Columbia Broadcasting System on the La Palina Smoker scoring a tremendous hit with the radio audience.





# Broadcasting Stars

## ELEANOR PAINTER

Eleanor Painter, well-known soprano, studied singing in Berlin and sang at the Charlottenberg Opera Company in Germany for two years. After this training she returned to America where she took leading parts in such musical plays as the "Lilca Domino," "Gloriana," a revival of "Florodora" and "The Last Waltz." In the intervals she made many operatic appearances in Germany and sang the roll of "Carmen" with the Philadelphia Grand Opera Company last month with great success.

Eleanor Painter is best known, however, for the part she created in "Princess Pat," Victor Herbert's beautiful operetta, in which she attained wide popularity.

## RUTH ETTING

Coming from a small western town, Ruth Etting has had a dramatic career in every sense of the word. Enrolled as an art student in the Academy of Fine Arts in Chicago, she was one of a group of girls called upon to take part in the chorus of a musical revue. One of the leads of the show becoming ill, Miss Etting was called upon to take her part and made a sensational success which put her well on the way to stardom. Last year she was featured in the Ziegfield Follies, and at present she is a star in "Whoopie" with Eddie Cantor.

She has made many recordings for the Columbia Phonograph Company, 43 all told, and is known as the "Sweetheart of Columbia" records.

Miss Etting appeared with Eddie Cantor on the first of the new Majestic Theatre of the Air programs on January 6th, heard over Columbia Broadcasting System.

## BELLE BAKER

Miss Baker, often called "The Incomparable," has played on the Keith Circuit for twelve years and is considered one of their biggest headliners. She has broken numerous box-office records for the theatres she has played and in her last appearance at the Palace Theatre in Cleveland thousands of people were unable to gain admittance so great was her popularity. Miss Baker has met with equal success in a recent engagement of five weeks in the large moving picture houses of Chicago, where she was the featured stage attraction.

This inimitable singing comedienne was starred in Shubert's "Artists and Models" and for two years in Ziegfield's "Betsy." She is a Brunswick recording artist and her number, "That's How I Feel About You," is their biggest seller. At present Miss Baker is planning to appear in the moving pictures in a feature talkie. Miss Baker has been heard in quite a few programs over the Columbia Broadcasting System including appearances in the Majestic Theatre of the Air and Vedol Vodevil.

## AGNES DAVIS

Agnes Davis, the talented soprano, who was recently heard as a feature artist of the Curtis Institute of Music program over Columbia Broadcasting System, is from Denver, Colorado. She attained recognition last year by winning the National Atwater-Kent Audition Contest and was a subsequent winner of a scholarship at the Curtis Institute of Music.

She is a student in the advanced course of music at the school and gives promise of being one of the foremost operatic and concert sopranos of the country.





## TRANSMISSION INTERVAL



Caller—"Is Mr. Jones in? This is Mr. Smith who has come to see him."

Butler (a radio enthusiast)—"Yes, sir; will you kindly stand by for a moment."

## FORCE OF ATTRACTION

A Scotchman recently admitted into a London hospital had his head jammed down the horn of a loud speaker. It was afterwards ascertained that, in the church from which the service was being broadcast, the collection box had been upset.



## ONE ACCESSORY LACKING

Old Lady (returning recent purchase): "I've tried every possible way, but I can't get any stations with this loud speaker."

Salesman: "I'm sorry madam. What make of set are you using?"

Old Lady: "Set? Oh, I haven't got a set!"



## A PUZZLING CIRCUIT

Newlywed—"Now, dear, I'm sure you can learn to cook by radio"

Mrs. Newlywed—"All right, Freddie, you hurry and hook up the radio to the range while I run down to the grocer's."



## REMOTE CONTROL



A Radio Announcer named Bevan.

Was motoring with his family of seven.

When the steering gear broke

He said to his folk—"We'er now changing over to Heaven."

## ON WHICH THE SUN NEVER SETS

Teacher—"What country is farthest from us?"

Willie (a will-be "ham")—"Why, DX!"



## HIE HAD THEM TRAINED

Mrs. Binks—"Very few people wear headphones nowadays."

Mrs. Jinks—"Yes, and I think it's a shame. John's ears were just starting to look natural and now he's beginning to look as much like a donkey as ever."



## ONE IZAAK WALTON NEVER HEARD OF

Farmer Boy (returning from fishing)—"That city feller must'a been foolin' me when he said he had a lot of luck fishin' for 'DX' up here. I ain't caught one 'o the durn things yet."



AT THE MILLION DOLLAR  
**DRAKE THEATRE**  
OIL CITY, PENN'A.

---

ANNOUNCEMENT EXTRAORDINARY !

— C O M I N G —

TUESDAY, APRIL 9th—Matinee and Evening

*THE MESSRS. SHUBERT PRESENT*

THE GREAT AND GORGEOUS MUSICAL SHOW

“**Gay Paree**”

*WITH THE INIMITABLE*

**CHARLES “CHIC” SALE**

*And A Cast of Over 150—Including—*

FRANK GABY, STANLEY ROGERS, SYLVIA FROOS, THE  
KELO BROS.—THE FAMOUS BERKHOFF TROUPE AND  
THE NEW YORK WINTER GARDEN GIRLS, ETC.

---

**SEATS ON SALE AT BOX OFFICE**

**NOTE THE LOW PRICES—**

**M A T I N E E** — FIRST FLOOR—\$1.00, \$1.50, \$2.00, \$2.50.

DE LUXE LOGE—\$1.00, \$1.50, \$2.00, \$2.50.

**E V E N I N G** — FIRST FLOOR—\$1.50, \$2.00, \$2.50, \$3.00.

DE LUXE LOGE—\$1.50, \$2.00, \$2.50, \$3.00.

**HOW TO GET TICKETS BY MAIL OR TELEPHONE—**

Mail orders must be accompanied by check or money order. Be sure and send self-addressed, stamped envelope to insure safe return of your tickets. Telephone orders promptly filled—Box Office Telephone number Oil City 2100.

**— I M P O R T A N T N O T I C E —**

The MATINEE performance of this famous show has been arranged especially for the benefit of our out-of-town patrons, who prefer to attend the Theatre during the daytime hours, and thus avoid the night crowds. Special attention given to Matinee Theatre Parties. You will enjoy the convenience of our cozy rest rooms for ladies and smoking rooms for gentlemen. Every factor for your comfort and convenience.

# "OUR NEXT FEATURE IS PRESENTED BY"

This announcement has become familiar to all radio listeners—and has become a part of nearly all radio programs. The reason is obvious—some one must pay for talent, and broadcasting station expense. Listeners appreciate the entertainment furnished them and are willing to accept the sponsor's story of his products and in turn show their appreciation by patronage. The following is the list of those who make possible your entertainment from Northwestern Pennsylvania Broadcast Station WLBW. For them we solicit your patronage.

## LIST OF LOCAL ADVERTISERS

### BRADFORD, PA.

Brown Boot Shop.

### BROOKVILLE, PA.

Brown Boot Shop.

### CAMBRIDGE SPRINGS, PA.

The Hotel Bartlett.

### CLARION, PA.

Brown Boot Shop.  
Ronald Corbett Company.  
Merle Laboratories.  
Clarion Furniture Co.

### CLEARFIELD, PA.

Brown Boot Shop.

### CORRY, PA.

National Bank of Corry.

### DUBOIS, PA.

Brown Boot Shop.

### ERIE, PA.

Refill Sales Company, Refill Broom.

### FRANKLIN, PA.

Anderson & Company, Furniture.  
A. J. Barron, Funeral Director.  
William A. Blair Company.  
Boyle Motor Company.  
Callan's Pharmacy.  
Franklin Garage Company.  
Jordan Jewelry Shop.  
Knight-Whippet Company.  
Korner Shoe Store.  
Lamberton National Bank.  
L. L. Limber's Bakery.  
Nelson's Dept. Store.  
Ott's Tire Shop.  
Pardoe Hardware Company.  
Park Theatre.  
Pierpont Motor Company.  
Plumer Bros. Wholesale and retail  
Tobacco and Candy.  
Pope Electric Shop.  
Riddle Bros. Restaurant.  
Watson Coal Company.

### GROVE CITY, PA.

Geo. J. Howe Company.  
The Wholesale Coffee Roaster.

### INDIANA, PA.

Brown Boot Shop.

### KANE, PA.

Brown Boot Shop.

### KNOX, PA.

Super Rub Chemical Company.

### MEADVILLE, PA.

Bates Music Store.  
Jack Bell, Electric Contractor.  
A. W. Carpenter, Electric Contractor.  
H. D. Carpenter, Electric Contractor.  
City Coal & Supply Company.  
Dunn's Bakery.  
Green & Baker, Manufacturers of  
Pure Ice Cream.  
Hanes Electric Company.  
Hecker's Electric Company.  
Larson's Beauty Shop.  
Maxwell & Blanchard, Furniture.  
Meadville Electric Supply Company.  
Meadville Tire Company.  
Patton & Emig, Wall Paper & Paints.  
C. F. Reitze, Hardware Company.  
Reynolds' Electric.  
W. E. Ries & Company, Electrical  
Contractor.  
F. E. Smith, Meats.  
Weller's Garage.  
Ott's Tire Shop.

### OIL CITY, PA.

Arlington Hotel.  
Art Nouveau.  
Berlin Radio Service.  
Boyle Motor Company.  
Brown Boot Shop.  
Continental Refining Company.  
P. H. Cribbs Company, Grocers  
Col. Drake Theatre.  
Sydney F. DeVore.  
Fornoff-Fry.  
Harvey Fritz, Jeweler.  
Helen Gordon Specialty Shop.  
W. W. Jeffrey, Ford Dealer.  
Kimball's.  
Kramer Wagon Company.  
Louis P. Lehman, Evangelist.  
Logan & Bryan, Brokers.  
McMahon & McLane.  
Dr. Arthur McCandless, Chiropractor.  
Royal Restaurant.  
Sigworth's Electric Shop.  
Veach Furniture Store.  
Warren Motor Company.  
Young's Electrical Store.  
Oil City Variety Store

### Radio Dealers, Oil City, Pa.

W. H. Corrin.  
Veach Furniture Company.

### PHILIPSBURG, PA.

Brown Boot Shop.



**PLEASANTVILLE, PA.**

Geo. N. Foggan.

**PUNXSUTAWNEY, PA.**

Brown Boot Shop.

**ST. MARYS, PA.**

Brown Boot Shop.

**TIDIOUTE, PA.**

City Garage.

Overland Tidioute Company.

**TITUSVILLE, PA.**

J. R. Gillen.

J. B. Goldstein's.

Helen Gordon Specialty Shop.

Mrs. Nina Foss Luckey.

D. E. Olson.

A. J. Robinson.

Ropp-Shreve, Decorative Company.

Frank J. Sheehan.

William & Homan.

W. A. Myers.

**WARREN, PA.**

A.B.C. "Yes" Motor Service Station.

H. S. King & Son.

Warren Radio Company, Radio Dealer.

Barrett Cleaners and Dyers.

Sundell Electric Co.

Bartsch and Sons Furniture Store.

**ASHVILLE, N. Y.**

Empire Oil Company.

**FREDONIA, N. Y.**

The White Inn.

**SALAMANCA, N. Y.**

Brown Boot Shop.

First National Bank.

Fitzgerald Bros. Dept. Store.

Hunt Furniture Company.

McCann Hardware Company.

Palace Restaurant.

Ray's Department Store.

Salamanca Trust Company.

**WESTFIELD, N. Y.**

Murray Hill Hotel.

## NATIONAL ADVERTISERS

The International Heating Co., St. Louis, Mo.—Makers of Oil Burning Heaters.

The ARZEN Laboratories, Inc., Clinton, Iowa—Medical Preparation for Colds, Etc.

The Preston Manufacturing Company, St. Louis, Mo.—Washing Machine.

The 10th Presbyterian Church, Philadelphia, Pa.—Church Services.

The Congress Cigar Co., Philadelphia, Pa.—The La Palina Hour, C.B.S.

Grigsby-Grunow Co., Chicago, Ill.—Majestic Theatre of the Air.

McFadden Publications, Inc., New York, N. Y.—The Physical Culture Hour, C.B.S.

The True Story Hour, C.B.S.

Warner Brothers, Inc., Hollywood, Calif.—The Vitaphone Jubilee Hour, C.B.S.

Kolster Radio Corp., Newark, N. J.—Kolster Hour, C.B.S.

De Forest Radio Corp., Jersey City, N. J.—De Forest Audions, C.B.S.

CeCo Manufacturing Co., Providence, R. I.—CeCo Couriers, C.B.S.

Wrigley Co., Chicago, Ill.—Wrigley Royal Canadians, C.B.S.

Enna Jettick Shoes, Auburn, N. Y.—Enna Jettick Melodies, C.B.S.

P. Lorillard Co., New York, N. Y.—Old Gold Cigarettes, C.B.S.

American Sugar Refining Co.

Royal Baking Powder Co. New York,

Beech-nut Packing Company

Jewel Tea Company

Pillsbury Flour Mills

Sonatron Tubes.

Kansas Cleansing Powder.

Theronoid Corp.

Mobo Automobile Soap.

Van Heusen Collars.

Rit Fashion Review.

Sonora Hour.

Veedol Hour.

Kodak Hour.

Shaw Du-All Tractors.

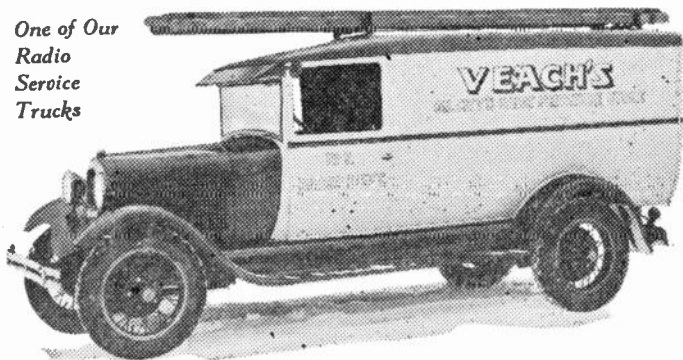
International Typewriter Co., Chicago, Ill.

Davis Paint Co., Kansas City, Mo.

# *for* EXPERT RADIO SERVICE

Telephone Oil City 4 1 9 3  
(Veach's Radio Dep't.)

*One of Our  
Radio  
Service  
Trucks*



## IF YOUR RADIO ISN'T "PERKING"—

**JUST RIGHT** — then telephone Oil City 4193, and ask for one of our Experts to call at your home and inspect your Radio. Many times the necessary repairs and adjustments can be made in a few moments. And if your

Radio Set needs to be completely overhauled, balanced, and tested we will bring it into our Radio Shop where we have complete facilities for making balky sets "perk." Our Radio Department has eight Radio Specialists and our Radio Shop is in charge of two graduate Radiotricians. No matter what kind of a Radio set you have—no matter what the trouble is—you can depend on our Radio Experts to put your set in working order. The charge for this service is very moderate indeed.

## PLANNING TO BUY A NEW RADIO ?

If you are planning to buy a new All Electric Radio Set, or if you live outside of the City limits and need a battery set, we invite you to call and inspect the new models in Atwater Kent, Majestic, Radiola, Philco, and Stromberg Carlson Radios. We are distributors of these five famous makes of Radio Receiving Sets. We also carry a complete line of Radio Cabinets, Loud Speakers, Radio Tubes, and other Accessories.

# VEACH'S

OIL CITY'S GREAT FURNITURE STORE

"The Home of Northwestern Pennsylvania's Largest Radio Dep't"

# WLBW ALLOCATION LOG

LATEST CHANGES AND CORRECTIONS TO DATE

By THE FEDERAL RADIO COMMISSION

Call Letters	Location	Power	Kc.	Mtrs.	Call Letters	Location	Power	Kc.	Mtrs.
KDKA	Wilkins Township E. Pittsburgh, Pa.	50KW	980	305.9	KFXR	Oklahoma City, Okla.	100	1310	228.9
KDLR	Devils Lake, N. D.	100	1210	247.8	KFXV	Flagstaff, Ariz.	100	1420	211.1
KDYL	Salt Lake, Utah	1 KW	1290	232.4	KFYO	Abilene, Texas	100	1420	211.1
KEJK	Beverly Hills, Cal.	500	1250	239.9	KFYR	Bismark, N. D.	500	550	545.1
KELW	Burbank, Calif.	500	780	384.4	KGA	Spokane, Wash.	5 KW	1470	204.0
KEX	Portland, Ore.	5 KW	1180	254.1	KGAR	Tucson, Ariz.	100	1370	218.8
KFAB	Lincoln, Nebr.	5 KW	770	389.4	KGB	San Diego, Calif.	250	1360	220.4
KFAD	Phoenix, Ariz.	500	620	483.6	KGBU	Ketchikan, Alaska	500	900	333.1
KFBB	Havre, Mont.	250	1360	220.4	KGBX	St. Joseph, Mo.	100	1370	218.8
KFBK	Sacramento, Calif.	100	1310	228.9	KGBY	See KGBZ.			
KFBL	Everett, Wash.	50	1370	218.8	*KGBZ	York, Nebr.	500	930	322.4
KFBU	Laramie, Wyo.	500	600	499.7	*Stations KGBZ, KGES, KGCH, KGE0 and KGDW to combine as KGBZ				
KFCB	Phoenix, Ariz.	100	1310	228.9	KGCA	Decorah, Iowa	50	1270	236.1
KFCR	Santa Barbara, Calif.	100	1500	199.9	KGCB	Enid, Okla.	100	1370	218.8
KFDM	Beaumont, Texas	500	560	535.4	KGCI	San Antonio, Texas	100	1370	218.8
KFDY	Brookings, S. Dak.	500	550	545.1	KGCM	Concordia, Kan.	50	1420	211.1
KFEC	Portland, Ore.	100	1370	218.8	KGCR	Brookings, S. D.	100	1210	247.8
KFEL	Denver, Colo.	250	940	319.0	KGCU	Mandan, N. D.	100	1200	249.9
KFEQ	St. Joseph, Mo.	2½KW	560	535.4	KGCX	First State Bank of Vida	10	1420	211.1
KFEY	Kellogg, Idaho	10	1210	247.8	KGDA	Dell Rapids, S. D.	15	1370	218.8
KFGQ	Boone, Iowa.	100	1310	228.9	KGDE	Fergus Falls, Minn.	50	1200	249.9
			Sunday	Only	KGDM	Stockton, Calif.	50	1150	260.7
KFH	Wichita, Kans.	1 KW	1300	230.6	KGDP	Pueblo, Colo.	10	1210	247.8
KFHA	Gunnison, Colo.	50	1200	249.9	KGDR	San Antonio, Texas	100	1500	199.9
KFI	Los Angeles, Calif.	5 KW	640	468.5	KGDW	See KGBZ			
	C.P. for 50KW				KGDY	Oldham, S. D.	15	1200	249.9
KFIF	Portland, Ore.	50	1420	211.1	KGEF	Los Angeles, Calif.	1 KW	1300	230.6
KFIO	Spokane, Wash.	100	1230	243.8	KGEK	Yuma, Colo.	50	1200	249.9
KFIZ	Fond du Lac, Wis.	100	1420	228.9	KGEO	See KGBZ			
KFIU	Juneau, Alaska	10	1310	211.1	KGER	Long Beach, Calif.	100	1370	218.8
KFJB	Marshalltown, Iowa	100	1200	249.9	KGES	See XGBZ			
KFJF	Oklahoma City, Okla.	5 KW	1470	204.0	KGEW	Fort Morgan, Colo.	100	1200	249.9
KFJI	Astoria, Ore.	50	1370	218.8	KGEZ	Kalispell, Mont.	100	1310	228.9
KFJM	Grand Forks, N. D.	500	550	545.1	KGFF	Alva, Okla.	100	1420	211.1
KFJR	Portland, Ore.	500	1300	230.6	KGFG	Oklahoma City, Okla.	100	1370	218.8
KFJY	Fort Dodge, Iowa	100	1310	228.9	KGFI	Glendale, Calif.	250	1000	299.8
KFJZ	Fort Worth, Texas	100	1370	218.8	KGFI	San Angelo, Texas	100	1310	228.9
KFKA	Greeley, Colo.	500	880	340.7	KGFJ	Los Angeles, Calif.	100	1420	211.1
KFKB	Midford, Kan.	5 KW	1130	265.3	KGFK	Halleck, Minn.	50	1200	249.9
KFKU	Lawrence, Kan.	1 KW	1220	245.8	KGFL	Raton, N. Mexico	50	1370	218.8
KFKX-KYW—(See KYW-KFKX)					KGFV	Ravenna, Nebr.	50	1420	211.1
KFKZ	Kirksville, Mo.	50	1200	249.9	KGFY	Pierre, S. D.	200	580	516.9
KFLV	Rockford, Ill.	500	1410	212.6	KGGF	Picher, Okla.	500	1010	296.9
KFLX	Galveston, Texas	100	1370	218.8	KGGH	Cedar Grove, La.	50	1310	228.9
KFMX	Northfield, Minn.	1 KW	1250	239.9	KGGM	Albuquerque, N. Mex.	100	1370	218.8
KFNF	Shenandoah, Iowa	500	890	336.9	KGHB	Honolulu, Hawaii	250	1320	227.1
KFOA	Seattle, Wash.	1 KW	1270	236.1	KGHD	Missoula, Mont.	50	1420	211.1
KFOR	Lincoln, Nebr.	100	1210	247.8	KGHE	Pueblo, Colo.	250	1320	227.1
KFOX	Long Beach, Calif.	1 KW	1250	239.9	KGHG	McGehee, Ark.	50	1310	228.9
KFPL	Dublin, Texas	15	1310	228.9	KGHI	Little Rock, Ark.	100	1500	199.9
KFPM	Greenville, Texas	15	1310	228.9	KGHL	Billings, Mont.	500	950	315.6
KFPW	Siloam Springs, Ark.	50	1340	223.7	KGHX	Richmond, Texas	50	1500	227.1
KFPY	Spokane, Wash.	500	1390	215.7	KGIO	Idaho Falls, Idaho	250	1320	227.1
KFQA-KMOX—(See KMOX-KFQA)					KGIQ	Twin Falls, Idaho	250	1320	227.1
KFQD	Anchorage, Alaska	100	1230	243.8	KGIR	Butte, Mont.	250	1360	220.4
KFOU	Holy City, Alaska	100	1420	211.1	KGJF	Little Rock, Ark.	250	890	336.9
KFOW	Seattle, Wash.	100	1420	211.1	KGJW	Trinidad, Colo.	100	1420	211.1
KFOZ	Hollywood, Calif.	1 KW	850	352.7	KGKB	Brownwood, Texas	100	1500	199.9
KFRC	San Francisco, Calif.	1 KW	610	491.5	KGKL	San Angelo, Texas	100	1370	218.8
KFRU	Columbia, Mo.	500	620	475.9	KGKO	Wichita Falls, Texas	250	570	526.0
KFSD	San Diego, Calif.	500	600	499.7	KGO	Oakland, Calif.	10KW	790	379.5
KFSG	Los Angeles, Calif.	500	1120	267.7	KGRC	San Antonio, Texas	100	1370	218.8
KFUL	Galveston, Texas	500	1290	232.4	KGRS	Amarillo, Texas	1 KW	1410	212.6
KFUM	Colorado Springs, Colo.	1 KW	1270	236.1	KGTT	San Francisco, Calif.	50	1420	211.1
KFUO	Clayton, Mo.	500	550	545.1	KGU	Honolulu, Hawaii	500	940	319.0
KFUP	Denver, Colo.	100	1310	228.9	KGW	Portland, Ore.	1 KW	620	483.6
KFUR	Ogden, Utah	50	1370	218.8	KGY	Lacey, Wash.	10	1200	249.9
KFVD	Culver City, Calif.	250	700	428.3	KHJ	Los Angeles, Calif.	1 KW	900	333.1
KFVS	Cape Girardeau, Mo.	100	1210	247.8	KHQ	Spokane, Wash.	1 KW	590	508.2
KFWB	Los Angeles, Calif.	1 KW	950	315.6	KICK	Red Oak, Iowa	100	1420	211.1
KFWC	Ontario, Calif.	100	1200	249.9	KIDO	Boise, Idaho	1 KW	1250	239.9
KFWF	St. Louis, Mo.	100	1200	249.9	KJBS	San Francisco, Calif.	100	1100	272.6
KFWI	San Francisco, Calif.	500	930	322.4	KJR	Seattle, Wash.	5 KW	970	309.1
KFWM	Oakland, Calif.	500	93	322.4	KKP	Seattle, Wash.	15	1370	218.8
KFWO	Avalon, Calif.	100	1500	199.9	KLCN	Blytheville, Ark.	50	1290	232.4
KFXD	Jerome, Idaho	50	1420	211.1	KLDS-KMBC—(See KMBC-KLDS)				
KFXF	Denver, Colo.	250	940	319.0	KLRA	Little Rock, Ark.	1 KW	1390	15.28
KFXJ	Edgewater, Colo.	50	1310	228.9	KLS	Oakland, Calif.	250	1440	20.72

# ALLOCATION LOG

WLBW

Call Letters	Location	Power	Kc.	Mtrs.
KLX	Oakland, Calif.	500	880	340.7
KLZ	Durpout, Colo.	1 KW	560	535.4
KMA	Shenandoah, Iowa.	500	930	322.4
KMBC )				
KLDS	Independence, Mo.	1 KW	950	315.6
KMED	Medford, Ore.	50	1310	228.9
KMIC	Ingleswood, Calif.	500	1120	267.7
KMJ	Fresno, Calif.	100	1200	249.9
KMMJ	Clay Center, Nebr.	1 KW	740	405.2
KMO	Tacoma, Wash.	500	1340	223.7
KMOX )				
KFQA	Kirkwood, Mo.	5 KW	1090	275.1
KLTR	Kirkwood, Calif.	1 KW	570	526.0
KNX	Hollywood, Calif.	5 KW	1050	285.5
KOA	Denver, Colo.	12.5 KW	830	361.2
KOAC	Corvallis, Ore.	1 KW	560	535.4
KOB	State College, N. Mex.	10KW	1180	254.1
KOCW	Chickasha, Okla.	100	1420	211.1
KOH	Reno, Nev.	100	1370	218.8
KOIL	Council Bluffs, Iowa.	1 KW	1260	238.0
KOIN	Sylvan, Ore.	1 KW	940	319.0
KOMO	Seattle, Wash.	1 KW	920	325.9
KORE	Eugene, Ore.	100	1420	211.1
KOW	Denver, Colo.	500	1390	215.7
KPCB	Seattle, Wash.	100	1210	247.8
KPJM	Prescott, Ariz.	100	1500	199.9
KPLA	Los Angeles, Calif.	1 KW	570	526.0
KPO	San Francisco, Calif.	5 KW	680	440.9
KPOF	Denver, Colo.	500	880	340.7
KPPC	Pasadena, Calif.	50	1200	249.9
KPO	Seattle, Wash.	100	1210	247.8
KPRC	Houston, Texas	1 KW	920	325.9
KPSN	Pasadena, Calif.	1 KW	950	315.6
KPWV	Westminster, Calif.	50 KW	1490	214.2
KQV	Pittsburgh, Pa.	500	1380	217.3
KQW	San Jose, Calif.	500	1010	296.9
KRE	Berkeley, Calif.	100	1370	218.8
KRGV	Harlingen, Texas	500	1260	338.0
KRLD	Dallas, Texas	10KW	1040	288.3
KRMD	Seattle, Wash.	50	1310	228.9
KRSC	Seattle, Wash.	50	1120	267.7
KSAC	Manhattan, Kan.	500	580	516.9
KSBA	Shreveport, La.	1 KW	1450	206.8
KSJC	Sioux City, Iowa	1 KW	1330	225.4
KSD	St. Louis, Mo.	500	550	545.1
KSEI	Pocatello, Idaho	250	900	333.1
KSL	Salt Lake City, Utah	5 KW	1130	265.3
KSMR	Santa Maria, Calif.	100	1200	249.9
KSO	Clairina, Iowa.	1 KW	1380	217.3
KSOO	Sioux Falls, S. D.	1 KW	1110	270.1
KSTP	Westcott, Minn.	10KW	1460	205.4
KTAB	Oakland, Calif.	500	1280	234.2
KTAP	San Antonio, Texas	100	1420	211.1
KTAT	Fort Worth, Texas	1 KW	1240	241.8
KTBI	Los Angeles, Calif.	1 KW	1300	330.6
KTBR	Portland, Ore.	500	1300	230.6
KTBS	Hot Springs, Ark.	10 KW	800	374.8
C.P. for 5 KW				
KTM	Santa Monica, Calif.	500	780	384.4
KTNT	Muscatine, Iowa.	5 KW	1170	256.3
KTSA	San Antonio, Texas	1 KW	1290	322.4
KTUE	Houston, Texas	5	1420	211.1
KTW	Seattle, Wash.	1 KW	1270	236.1
KUJ	Longview, Wash.	10	1500	199.9
KUOA	Fayetteville, Ark.	1 KW	1390	215.7
KUOM	Missoula, Mont.	500	570	526.0
KUSD	Vernonville, S. D.	500	890	326.9
KUT	Austin, Texas	500	1120	267.7
KVI	Nr. Des Moines, Wash.	1 KW	1340	224.7
KVL	Seattle, Wash.	100	1370	218.8
KVOO	Tulsa, Okla.	5 KW	1140	263.0
KVOS	Bellingham, Wash.	100	1200	249.9
KWVA	Chicago, Ill.	5 KW	1020	292.9
KWBS	Portland, Ore.	15	1500	199.9
KWCR	Cedar Rapids, Iowa	100	1310	228.9
KWEA	Shreveport, La.	100	1210	247.8
KWG	Stockton, Calif.	100	1200	249.9
KWJJ	Portland, Ore.	500	1060	282.8
KWK	St. Louis, Mo.	1 KW	1350	222.1
KWKC	Kansas City, Mo.	100	1370	218.8
KWKH	Kennonwood, La.	20KW	850	352.7
KWLC	Decorah, Iowa.	50	1270	236.1
KWSC	Pullman, Wash.	500	1390	215.7
KWTC	Santa Ana, Calif.	100	1500	199.9
KWWG	Brownsville, Texas.	500	1260	338.0
KXA	Seattle, Wash.	500	570	526.0
KXL	Portland, Ore.	500	1250	239.9
KXO	El Centre, Calif.	100	1200	249.9

Call Letters	Location	Power	Kc.	Mtrs.
KXRO	Aberdeen, Wash.	75	1420	211.1
KYA	San Francisco, Calif.	1 KW	1230	243.8
KYW )				
KFKK	Chicago, Ill.	5 KW	1020	293.9
KZM	Hayward, Calif.	100	1370	218.8
WAAD	Cincinnati, Ohio.	25	1420	211.1
WAAD	Chicago, Ill.	500	920	325.9
WAAM	Newark, N. J.	500	1250	239.9
WAAT	Jersey City, N. J.	300	1070	280.2
WAAB	Omaha, Nebr.	500	660	454.3
WABC )				
WBOQ	W. of Cross Bay Blvd. Queens Co., N. Y.	5 KW	860	348.6
WABF	Kingston, Pa.	250	1440	208.2
WABI	Bangor, Maine	100	1200	249.9
WABO-WHEC	(See WHEC-WABO)			
WABY	Philadelphia, Pa.	50	1310	228.9
WABZ	New Orleans, La.	100	1200	249.9
WADC	Akron, Ohio.	1 KW	1320	227.1
WAFD	Detroit, Mich.	100	1500	199.9
WAGM	Royal Oak, Mich.	50	1310	228.9
WAH	Columbus, Ohio.	5 KW	640	468.5
WALK	Willow Grove, Pa.	50	1500	199.9
WAPI	Birmingham, Ala.	1 KW	1140	263.0
C.P. for 5000				
WASH	Grand Rapids, Mich.	250	1270	236.1
WBA	Lafayette, Ind.	500	1400	214.2
WBAC	Harrisburg, Pa.	500	1120	267.7
WBAL	Glen Morris, Md.	5 KW	1060	282.8
WBAP	Fort Worth, Tex.	10 KW	800	374.8
C.P. for 50 KW				
WBAW	Nashville, Tenn.	5 KW	1490	201.2
WBAN	Wilkes-Barre, Pa.	100	1210	247.8
WBBC	Brooklyn, N. Y.	250	1400	214.2
WBBL	Richmond, Va.	100	1370	218.8
WBBM )				
WJBT	Glenview, Ill.	10KW	770	389.4
C.P. for 25KW				
WBBR	Rossville, N. Y.	1 KW	1300	230.6
WBBW	Norfolk, Va.	100	1200	249.9
WBBY	Charleston, S. C.	75	1200	249.9
WBBZ	Ponca City, Okla.	100	1200	249.9
WBCM	Bay City, Mich.	500	1410	212.6
WBET	Medford, Mass.	500	1360	220.4
WBIS-WNAC	(See WNAC-WBIS)			
WBMH	Detroit, Mich.	100	1310	228.9
WBMS	Fort Lee, N. J.	250	1450	206.8
WBNY	New York, N. Y.	250	1350	222.1
WBOQ-WABC	(See WABC-WBOQ)			
WBOW	Terre Haute, Ind.	100	1310	228.9
WBRC	Birmingham, Ala.	500	930	322.4
WBRE	Wilkes-Barre, Pa.	100	1310	228.9
WBRL	Tilton, N. H.	500	1430	209.7
WBSS	Wellesley Hills, Mass.	250	780	384.4
WBT	Charlotte, N. C.	5 KW	1080	277.6
C.P. for 10KW				
WBZ	E. Springfield, Mass.	15KW	990	302.8
WBZA	Boston, Mass.	500	990	302.8
WCAC	Storrs, Conn.	500	1330	225.4
WCAD	Canton, N. Y.	500	1220	245.8
WCAE	Pittsburgh, Pa.	500	1220	245.8
WCAH	Columbus, Ohio.	250	1430	229.7
WCAJ	Lincoln, Nebr.	500	590	508.2
WCAL	Northfield, Minn.	1 KW	1250	239.9
WCAM	Camden, N. J.	500	1280	234.2
WCAO	Baltimore, Md.	250	600	499.7
WCAP	Asbury Park, N. J.	500	1280	234.2
WCAT	Rapid City, S. D.	100	1200	249.9
WCAU	Byberry, Pa.	1 KW	1170	256.3
C.P. for 5 KW				
WCAX	Burlington, Vt.	100	1200	249.9
WCAX	Carthage, Ill.	100	1070	280.2
WCBA	Allentown, Pa.	100	1500	199.9
WCBD	Zion, Ill.	5 KW	1080	277.6
WCBI	Baltimore, Md.	100	1370	218.8
WCBS	Springfield, Ill.	100	1210	247.8
WCDA	Anoka, Minn.	15KW	810	370.2
WCDF	Cliffside Park, N. J.	250	1350	222.1
WCGU	Chicago, Ill.	50KW	970	309.1
WCLB	Coney Island, N. Y.	500	1400	214.2
WCLC	Long Beach, N. Y.	100	1500	199.9
WCLD	Kenosha, Wis.	100	1200	249.9
WCLF	Juliet, Ill.	100	310	228.9
WCLM	Culver, Ind.	500	1400	214.2
WCOA	Pensacola, Fla.	500	1120	267.7
WCOC	Columbus, Miss.	500	880	340.7
WCOH	Greenville, N. Y.	100	1210	247.8
WCRW	Chicago, Ill.	100	1210	247.8
WCSH	Portland, Me.	500	940	319.0
WCSO	Springfield, Ohio.	500	1380	217.3



# ALLOCATION LOG

WLWB

Call Letters	Location	Power	Kc.	Mtrs.	Call Letters	Location	Power	Kc.	Mtrs.
WCX-WJR—(See WJR-WCX)					WHBF	Rock Island, Ill.	100	1210	247.8
WDAE	Tampa, Fla.	1 KW	620	483.6	WHBL	Sheboygan, Wis.	500	1410	212.6
WDAF	Kansas City, Mo.	1 KW	610	491.5	WHBP	Johnstown, Pa.	100	1310	228.9
WDAG	Amarillo, Tex.	1 KW	1410	212.6	WHBQ	Memphis, Tenn.	100	1370	218.8
WDHA	El Paso, Texas.	100	1310	228.9	WHBU	Anderson, Ind.	100	1210	247.8
WDAY	W. Fargo, N. D.	1 KW	1280	234.2	WHBW	Philadelphia, Pa.	100	1500	199.9
WDBJ	Roanoke, Va.	250	930	322.4	WHBY	West De Pere, Wis.	100	1200	249.9
WDBO	Orlando, Fla.	1 KW	620	483.6	WHDI	Minneapolis, Minn.	500	1410	212.6
WDEL	Wilmington, Del.	250	1120	267.7	WHDL	Tupper Lake, N. Y.	10 KW	1420	211.1
WDGY	Minneapolis, Minn.	500	1410	212.6	WHEC )				
WDOF	Chattanooga, Tenn.	1 KW	1280	234.2	WABO )	Rochester, N. Y.	500	1440	208.2
WDRG	New Haven, Conn.	500	1330	225.4	WHFC )				
WDSU	New Orleans, La.	1 KW	1270	236.1	WHK )	Cleveland, Ohio.	1 KW	1390	215.7
WDWF )					WHN )	New York, N. Y.	250	1010	296.9
WLSI )	Cranston, R. I.	100	1210	247.8	WHO )	Des Moines, Iowa.	5 KW	1000	299.8
WDZ )	Tuscola, Ill.	100	1070	280.2	WHPP )	Englewood Cliffs, N. J.	10	1420	211.1
WEAF	Bellmore, N. Y.	50KW	660	454.3	WIAS	Ottumwa, Iowa.	100	1420	211.1
WEAI	Ithaca, N. Y.	500	1270	236.1	WIJA	Madison, Wis.	100	1210	247.8
WEAM	N. Plainfield, N. J.	100	1370	218.8	WIBG	Elkins Park, Pa.	50	930	322.4
WEAN	Providence, R. I.	250	505	258.5	WIBM	Jackson, Mich.	100	1370	218.8
WEAO	Columbus, Ohio.	750	550	545.1	WIBO	Des Moines, Ill.	1 KW	570	526.0
WEAR	Cleveland, Ohio.	1 KW	1070	280.2	WIBR	Steubenville, Ohio.	50	1420	211.1
WEBC	Superior, Wis.	1 KW	1280	234.2	WIBS	Elizabeth, N. J.	250	1450	206.8
WEBE	Cambridge, Ohio.	100	1210	247.8	WIBU	Poynette, Wis.	100	1310	228.9
WEBQ	Harrisburg, Ill.	50	1210	247.8	WIBW	Topeka, Kan. (Near)	1 KW	1300	230.6
WEBR	Buffalo, N. Y.	100	1310	228.9	WIBX	Utica, N. Y.	100	1200	249.9
WEBW	Beloit, Wis.	350	600	499.7	WIBZ	Montgomery, Ala.	15	1500	199.9
WEDC	Chicago, Ill.	100	1210	247.8	WICC	Easton, Conn.	500	1190	252.0
WEDH	Erie, Pa.	30	1420	211.1	WIL	St. Louis, Miss.	1 KW	1350	222.1
WEET	Boston, Mass.	500	590	508.2	WILL	Urbana, Ill.	250	890	336.9
WEHS	Evanston, Ill.	100	1310	228.9	WILM	Wilmington, Del.	100	1500	199.9
WELK	Philadelphia, Pa.	100	1370		WINR	Bay Shore, N. Y.	100	1210	247.8
WEMC	Berrien Springs, Mich.	1 KW	590	508.2	WIOD	Miami Beach, Fla.	1 KW	1240	241.8
WENR )					WIP	Philadelphia, Pa.	500	610	491.5
WBCN )	Chicago, Ill.	25 KW	870	344.6	WISN	Milwaukee, Wis.	250	1120	267.7
WEPS	Gloucester, Mass.	100	1200	249.9	WJAD	Waco, Texas.	1 KW	1240	241.8
WEVD	Woodhaven, N. Y.	500	1300	230.6	WJAG	Norfolk, Nebr.	1 KW	1060	282.8
WEW	St. Louis, Miss.	1 KW	760	394.5	WJAK	Kokomo, Ind.	50	1310	228.9
WFAA	Dallas, Texas.	5 KW	1040	288.3	WJAR	Providence, R. I.	250	890	336.9
	C.P. for 5 KW				WJAS	Pittsburgh, Pa.	1 KW	1290	232.4
WFAN	Philadelphia, Pa.	500	610	491.5	WJAX	Jacksonville, Fla.	1 KW	1260	238.0
WFBC	Knoxville, Tenn.	50	1200	249.9	WJAY	Cleveland, Ohio.	500	1450	206.8
WFBE	Cincinnati, Ohio.	100	1200	249.9	WJAZ	Mt. Prospect, Ill.	5 KW	1480	202.6
WFBG	Altoona, Pa.	100	1310	228.9	WJBC	La Salle, Ill.	100	1200	249.9
WFBJ	Collegeville, Minn.	100	1370	218.8	WJBI	Red Bank, N. J.	100	1210	247.8
WFBK	Syracuse, N. Y.	750	900	333.1	WJBK	Ypsilanti, Mich.	50	1370	218.8
	Temporarily assigned full				WJBL	Decatur, Ill.	100	1200	249.9
	time on	1 KW	1490	214.2	WJBO	New Orleans, La.	100	1370	218.8
WFRM	Indianapolis, Ind.	1 KW	1050	285.5	WJBT-WBBM—(See WBBM-WJBT)				
WFRB	Baltimore, Md.	250	1120	267.7	WJBU	Lewisburg, Pa.	100	1210	247.8
WFCT	Pawtucket, R. I.	100	1210	247.8	WJBW	New Orleans, La.	30	1200	249.9
WFDF	Flint, Mich.	100	1310	228.9	WJBY	Gadsden, Ala.	50	1210	247.8
WFI	Philadelphia, Pa.	500	560	535.4	WJJD	Mooshead, Ill.	20KW	1180	254.1
WFIW	Hopkinsville, Ky.	1 KW	940	319.0	WJKS	Gary, Ind.	500	1360	220.4
WFJC	Akron, Ohio.	500	1450	206.8	WJR )				
WFKD	Frankford, Pa.	50	1310	228.9	WCX )	Silver Lake Village, Mch.	5 KW	750	399.8
WFLA )					WJSV	Mt. Vernon Hills, Va.	10KW	1460	205.4
WSUN )	Clearwater, Fla.	1 KW	900	333.1	WJZ	Bound Brook, N. J.	30KW	760	394.5
WGAL	Lancaster, Pa.	15	1310	228.9	WKAQ	San Juan, P. R.	500	580	516.9
WGBB	Freeport, N. Y.	100	1210	247.8	WKAR	E. Lansing, Mich.	500	1040	288.3
WGBC	Memphis, Tenn.	500	1430	209.7	WKAV	Laconia, N. H.	100	1310	228.9
	Sunday Only				WKBB	Joliet, Ill.	100	1310	228.9
WGBF	Evansville, Ind.	500	630	475.9	WKBC	Birmingham, Ala.	10	1310	228.9
WGBI	Scranton, Pa.	250	880	340.7	WKBE	Webster, Mass.	100	1200	249.9
WGBS	Astoria, L. I., N. Y.	500	1180	254.1	WKBF	Indianapolis, Ind.	500	1400	214.2
WGCM	Gulfport, Miss.	100	1210	247.8	WKBH	La Crosse, Wis.	1 KW	1380	217.3
WGCP	Newark, N. J.	260	1250	239.9	WKBI	Chicago, Ill.	50	1310	228.9
WGCS	Chicago, Ill.	500	1360	220.4	WKBN	Youngstown, Ohio.	500	570	526.0
WGHP	Fraser, Mich.	750	1240	241.8	WKBO	Jersey City, N. J.	250	1450	206.8
WGL	Ft. Wayne, Ind.	500	1230	243.8	WKBP	Battle Creek, Mich.	50	1420	211.1
WGMS-WLB—(See WLB-WGMS)					WKBQ	New York, N. Y.	250	1350	222.1
WGN )					WKBS	Galesburg, Ill.	100	1310	228.9
WLIB )	Elgin, Ill.	25KW	720	416.4	WKBW	Brookville, Ind.	100	1500	199.9
WGR	Buffalo, N. Y.	1 KW	550	545.1	WKBY	Amherst, N. Y.	5 KW	1470	204.0
WGST	Atlanta, Ga.	250	890	336.9	WKCB	Ludington, Mich.	50	1500	199.9
WGY	Schenectady, N. Y.	50KW	790	379.5	WKEN	Grand Island, N. Y.	1 KW	1040	288.3
WHA	Madison, Wis.	750	750	400.0	WKJC	Lancaster, Pa.	100	1200	249.9
WHAD	Milwaukee, Wis.	250	1120	267.7	WKRC	Cincinnati, Ohio.	500	550	545.1
WHAM	Victor Twp. N. Y. (Rochester)	5 KW	1150	260.7	WKY	Oklahoma City, Okla.	1 KW	900	333.1
WHAP	Carlstadt, N. J.	1 KW	1300	230.6	WLAC	Nashville, Tenn.	5 KW	1490	201.2
WHAS	Jeffersonstown, Ky.	5 KW	820	365.6	WLB	Okalona, Ky.	30	1200	249.9
WHAZ	Troy, N. Y.	500	1300	230.6	WLB )				
WHB	Kansas City, Mo.	1 KW	950	315.6	WGMS )	Minneapolis, Minn.	1 KW	1250	239.9
WHBC	Canton, Ohio.	10	1200	249.9	WLCB	Muncie, Ind.	50	1310	228.9
WHBD	Bellefontaine, Ohio.	100	1370	218.9	WLBF	Kansas City, Kansas.	100	1420	211.1
					WLBG	Petersburg, Va.	100	1200	249.9
					WLBH	Farmingdale, N. Y.	30	1420	211.1
					WLBL	Stevens Pt., Wis.	2 KW	900	333.1
					WLBO	Galesburg, Ill.	100	1310	228.9

# ALLOCATION LOG

WLBW

Call Letters	Location	Power	Kc.	Mtrs.
WLBV	Mansfield, Ohio.....	100	1210	247.8
WLBW	Oil City, Pa.....	500	1260	238.0
WLBX	L. I. City, N. Y.....	100	1500	199.9
WLBZ	Dover-Foxcroft, Maine..	250	620	483.6
WLCI	Ithaca, N. Y.....	50	1210	247.8
WLEX	Lexington, Mass.....	100	1420	211.1
WLIB-WGN—(See WGN-WLIB)				
WLIT	Philadelphia, Pa.....	500	560	535.4
WLOE	Chelsea, Mass.....	100	1500	199.9
WLS	Crete, Ill.....	5 KW	870	344.6
WLSI-WDFW—(See WDFW-WLSI)				
WLTH	Brooklyn, N. Y.....	500	1400	214.2
WLW	Mason, Ohio.....	50KW	700	428.3
WLWL	Kearny, N. J.....	5 KW	1100	272.6
WMAC	Cazenovia, N. Y.....	250	570	526.0
WMAF	S. Dartmouth, Mass.....	500	1360	220.4
WMAK	Martinsville, N. Y.....	750	900	333.1
WMAL	Washington, D. C.....	250	630	475.9
WMAN	Columbus, Ohio.....	50	1210	247.8
WMAQ	Addison, Ill.....	5 KW	670	447.5
WMAY	St. Louis, Mo.....	100	1200	249.9
WMAZ	Macon, Ga.....	500	890	336.9
WMB	Newport, R. I.....	100	1500	199.9
WMB	Detroit, Mich.....	100	1420	211.1
WMBD	Peoria Hts., Ill.....	500	1440	208.2
WMBF	Miami Beach, Fla.....	500	560	535.4
WMBG	Richmond, Va.....	100	1210	247.8
WMBH	Joplin, Mo.....	100	1420	211.1
WMBI	Addison, Ill.....	5 KW	1080	277.6
WMBJ	Wilksburg, Pa.....	100	1500	199.9
WMBL	Lakeland, Fla.....	100	1310	228.9
WMBM	Memphis, Tenn.....	10	1500	199.9
WMB	Auburn, N. Y.....	100	1370	218.8
WMBQ	Brooklyn, N. Y.....	100	1500	199.9
WMBR	Tampa, Fla.....	100	1210	247.8
WMB	Lemoynne, Pa.....	500	1430	209.7
WMC	Memphis, Tenn.....	500	780	384.4
WMC	Hoboken, N. J.....	500	570	526.0
WMES	Boston, Mass.....	50	1500	199.9
WMMN	Fairmont, W. Va.....	250	890	336.9
WMPC	Lapeer, Mich.....	30	1500	199.9
WMRJ	Jamaica, N. Y.....	10	1420	211.1
WMSG	New York, N. Y.....	250	1350	222.1
WMT	Waterloo, Iowa.....	100	1200	249.9
WNAC )				
WNBS	Boston, Mass.....	500	1230	243.8
WNAD	Norman, Okla.....	500	1010	296.9
WNAT	Philadelphia, Pa.....	100	1310	228.9
WNAX	Yankton, S. D.....	1 KW	570	526.0
WNBF	Binghamton, N. Y.....	50	1500	199.9
WNBH	New Bedford, Mass.....	100	1310	228.9
WNBJ	Knoxville, Tenn.....	50	1310	228.9
WNBO	Washington, Pa.....	15	1200	249.9
WNBQ	Rochester, N. Y.....	15	1500	199.9
WNB	Memphis, Tenn.....	500	1430	209.7
WNBW	Carbondale, Pa.....	5	1200	249.9
WNBX	Springfield, Vt.....	10	1200	249.9
WNBZ	Saranac Lake, N. Y.....	10	1290	232.4
WNEW	Newport News, Va.....	100	1310	228.9
WNJ	Newark, N. J.....	250	1450	206.8
WNOX	Knoxville, Tenn.....	1 KW	560	535.4
WNRC	Greensboro, N. C.....	500	1440	208.2
WNYC	New York, N. Y.....	500	570	526.0
WOAI	San Antonio, Texas.....	5 KW	1190	252.0
WOAN	Lawrenceburg, Tenn.....	500	600	499.7
WOAX	Trenton, N. J.....	500	1280	234.2
WOBT	Union City, Tenn.....	15	1310	228.9
WOB	Charleston, W. Va.....	250	580	516.9
WOC	Davenport, Iowa.....	5 KW	1000	299.8
WOC	Jamestown, N. Y.....	25	1210	247.8
WODA	Paterson, N. J.....	1 KW	1250	239.9
WOI	Ames, Iowa.....	3½ KW	560	535.4
WOK-WMBB—(See WMBB-WOK)				
WOKO	Mt. Beacon, N. Y.....	500	1440	208.2
WOL	Washington, D. C.....	100	1310	228.9
WOMT	Manitowoc, Wis.....	100	1210	247.8
WOO	Philadelphia, Pa.....	100	1500	199.9
WOOD	Furnwood, Mich.....	500	1270	236.1
WOQ	Kansas City, Mo.....	1 KW	610	491.5
WOR	Kearney, N. J.....	5 KW	710	422.3
WORD	Batavia, Ill.....	5 KW	1480	202.6
WOS	Jefferson City, Mo.....	500	630	475.9
WOV	Secaucus, N. J.....	1 KW	1130	265.3
WOW	Omaha, Nebr.....	1 KW	590	508.2
WOWO	Ft. Wayne, Ind.....	10KW	1160	258.5
WPAP-WQAO—(See WQAO-WPAP)				
WPCC	Chicago, Ill.....	500	570	526.0

Call Letters	Location	Power	Kc.	Mtrs.
WPCH	Hoboken, N. J.....	500	810	370.2
WPG	Atlantic City, N. J.....	5 KW	1100	272.6
WPOR-WTAR—(See WTAR-WPOR)				
WPRC	Harrisburg, Pa.....	100	1200	249.9
WPSC	State College, Pa.....	500	1230	243.8
WPSW	Philadelphia, Pa.....	50	1500	199.9
WPTF	Raleigh, N. C.....	10KW	680	440.9
WQAM	Miami, Fla.....	750	1240	241.8
WQAN	Scranton, Pa.....	250	880	340.7
WQAO )				
WPAP	Cliffside, N. J.....	250	1010	296.9
WQBC	Utica, Miss.....	300	1360	220.4
WQBJ	Clarksburg, W. Va.....	65	1200	249.9
WQBZ	Weirton, W. Va.....	60	1420	211.1
WRAF	La Porte, Ind.....	100	1200	249.9
WRAK	Erie, Pa.....	50	1370	218.8
WRAW	Reading, Pa.....	100	1310	228.9
WRAX	Philadelphia, Pa.....	250	1020	293.8
WRBC	Valparaiso, Ind.....	500	1240	241.8
WRBI	Tifton, Ga.....	20	1310	228.9
WRBJ	Hattiesburg, Miss.....	10	1500	199.9
WRBL	Columbus, Ga.....	50	1200	249.9
WRBQ	Greenville, Miss.....	100	1210	247.8
WRBT	Wilmington, N. C.....	50	1370	218.8
WRBU	Gastonia, N. C.....	100	1210	247.8
WRBW	Columbia, S. C.....	15	1310	228.9
WRC	Washington, D. C.....	500	950	315.6
WREC	Whitehaven, Tenn.....	500	600	499.7
WREN	Lawrence, Kan.....	1 KW	1220	245.8
WRHM	Fridley, Minn.....	1 KW	1250	239.9
WRJN	Racine, Wis.....	100	1370	218.8
WRNY	Coytesville, N. J.....	250	1010	296.9
WRR	Dallas, Texas.....	500	1280	234.2
WRUF	Gainesville, Fla.....	5 KW	1470	204.0
WRVA	Richmond, Va.....	1 KW	1110	270.1
	C. P. for 5 KW			
WSAI	Mason, Ohio.....	5 KW	800	374.8
WSAJ	Grove City, Pa.....	100	1310	228.9
WSAN	Allentown, Pa.....	250	1440	208.2
WSAR	Fall River, Mass.....	250	1450	206.8
WSAZ	Huntington, W. Va.....	250	580	516.9
WSB	Atlanta, Ga.....	10KW	740	405.2
WSBC	Chicago, Ill.....	100	1210	247.8
WSBT	South Bend, Ind.....	500	1230	243.8
WSDA-WSGH—(See WSGH-WSDA)				
WSEA	Portsmouth, Va.....	500	780	384.4
WSGH )				
WSDA	Brooklyn, N. Y.....	500	1400	214.2
WSIS	Sarasota, Fla.....	250	1010	296.9
WSIX	Springfield, Tenn.....	100	1210	247.8
WSM	Nashville, Tenn.....	5 KW	650	461.3
	C. P. for 50KW			
WSMB	New Orleans, La.....	750	1320	227.1
WSMD	Salisbury, Md.....	100	1310	228.9
WSMK	Dayton, Ohio.....	200	570	526.0
WSPD	Toledo, Ohio.....	500	1340	223.7
WSRO	Middletown, Ohio.....	100	1420	211.1
WSSH	Boston, Mass.....	100	1420	211.1
WSUI	Iowa City, Iowa.....	500	580	516.9
WSUN-WFLA—(See WFLA-WSUN)				
WSVS	Buffalo, N. Y.....	50	1370	218.8
WSYR	Syracuse, N. Y.....	250	570	526.0
WTAD	Quincy, Ill.....	500	1440	208.2
WTAG	Worcester, Mass.....	250	580	516.9
WTAM	Cleveland, Ohio.....	3½ KW	1070	280.2
WTAQ	Eau Claire, Wis.....	1 KW	1330	225.4
WTAR )				
WPOR	Norfolk, Va.....	500	780	384.4
WTAW	College Sta. Texas.....	500	1120	267.7
WTAX	Streator, Ill.....	50	1210	247.8
WTAZ	Chesterfield Hills, W. Va.	16	1210	247.8
WTBO	Cumberland, Md.....	50	1420	211.1
WTFI	Toccoa, Ga.....	500	1450	206.8
WTHS	Atlanta, Ga.....	100	1310	228.9
WTIC	Hartford, Conn.....	250	600	499.7
WTMJ	Brookfield, Wis.....	1 KW	620	483.6
WVAE	Hammond, Ind.....	100	1200	249.9
WWJ	Detroit, Mich.....	1 KW	920	325.9
WWL	New Orleans, La.....	500	850	352.7
	C. P. for 5 KW			
WVNC	Asheville, N. C.....	1 KW	570	526.0
WVRL	Woodside, N. Y.....	100	1500	199.9
WVVA	Wheeling, W. Va.....	250	1160	258.5
	C. P. for 5KW			

# *“Exclusiveness”*

**W**HEN you look at the page of a newspaper you are probably looking at twenty different advertisements at once; they are all over the page, therefore you may **OVERLOOK** a particular “ad”, it may be lost in the mass of matter before you.

**W**HEN an “ad” is placed before you via the **RADIO** it is **EXCLUSIVE**—only one name can be placed before you at a time.

**T**HE person sponsoring the program has your **UNDIVIDED** attention—the busiest man in the country is **NOT** busy when he is listening to the radio.

**C**OULD you get the attention of a business man in such an exclusive way under any other circumstances? You are talking business in **HIS OWN HOME**.

**W**HEN the prospective buyer is listening in, and “Quaker State Motor Oil” is announced he has not **OVERLOOKED** it—he **COULDN'T DODGE IT**.



*The* OIL CITY DERRICK

Member Associated Press

Member Audit Bureau of Circulation



*News When It Is News*



Tune in each evening at 7:00 o'clock, on  
Station WLBW, for the latest News  
Flashes direct from our  
Editorial Rooms.

COMMERCIAL  
*Printing*  
DEPARTMENT

The Finest Equipped Printing Plant In  
Northwestern Pennsylvania

CATALOGS AND DIRECT MAIL ADVERTIS-  
ING. OFFICE AND FACTORY FORMS.  
RULING AND BOOKBINDING.

*Phone 4362*