

Radio Week

COMPLETE LOGS FOR WEEK OF FEBRUARY 19TH TO 25TH

Vol. 1 Feb. 19, 1939 No. 4
Copyright 1939

Contents

Late Flashes	2
Program Highlights	5
Air Serials	6
Dial Indicator	8
Logs for Week.....Pages 8 to 20	
Short Wave Guide.....	21
News on the Air.....	23
Alphabetic Program Index.....	22, 23



Crusading editor, Edward G. Robinson, casts an approving eye on his favorite Radio magazine, Radio

News Week. Frankie Darrow, often heard on the KNX-CBS Show is on the right.

Log of Stations for Week
Airshows Indexed Alphabetically



Program Highlights
Previews—Special Events

Late Flashes

Mrs. F.D.R. To Speak

Mrs. Franklin D. Roosevelt will be heard over the transcontinental network of KNX-CBS, Tuesday, Feb. 21, when she speaks as guest of honor at a banquet tendered by the American Youth Congress in New York. Program will carry an announcement of an "Eleanor Roosevelt Fellowship" which it is establishing as a testimonial to the First Lady of the Land. It will be heard at 7:45 p. m.

Dr. Christian Special

"Washington Had His Delaware" based on a story of the regeneration of an 18-year-old youth who is uncertain about his feelings regarding his native land, will be the theme of the "Dr. Christian" airshow Tuesday, Feb. 21, on KNX-CBS, at 7 p. m. Jean Hersholt has the leading role.

Dietrich C. & S. Guest

Marlene Dietrich will appear as guest star on the Chase and Sanborn Hour, Sunday, from 5 to 6 p. m. on KFI-NBC in the dramatic portion of the show with Don Ameche. Then she will be on the introductory list of Charlie and Bergen.

"Buck" Gunga Din

Jack "Sahib" Benny will present his version of the movie version of Rudyard Kipling's version of "Gunga Din" on his half hour program over KFI-NBC, Sunday, Feb. 19, at 8:30 p. m. Kenny Baker gets the title role, while Buck Benny portrays Sergeant McChesney and Don Wilson does his brother, Huckleberry.

Lily Pons On Air

Lily Pons makes her second guest appearance of the season for the Sunday Evening Hour on KNX-CBS, Sunday, Feb. 19, at 6 p. m. The symphonic orchestra and 26-voice chorus will be directed by Wilfred Pelletier.

Horton On Gateway

Edward Everett Horton will play the support role to two aspirants to picture contracts during the Sunday, Feb. 19, broadcast of the Gateway to Hollywood, on KNX-CBS, at 3:30 p. m. Monetta Darnell, of Dallas, Tex., is the girl entrant.

Anti-War Policy

"What Is The Best Policy For Keeping the United States Out of War" will be the subject of discussion between Senators Gerald P. Nye, Republican, of North Dakota, and Claude Pepper, Democrat of Florida, on the "People's Platform" program Sunday, airing over KNX-CBS, at 10 p. m.

The Play's The Thing

Fight of independent motion picture theater owners and exhibitors throughout the country, has Hollywood in a topsy-turvy nightmare as far as radio is concerned. Ultimate outcome is expected to result in radio 'finding' itself as one of the dominating factors of the field of entertainment that will survive without the aid of big box office names on various programs.

It will harken back to the old stage tradition that 'the plays the thing' and result in hundreds of energetic and ambitious radio actors and actresses finding themselves cast in important roles on the bigger programs with salaries they are entitled to collect. Scores of radio players that have been in the game since radio first became a commercial selling medium, have stood by watching scores of picture people step into the picture and collect big salaries that rightfully should have gone to these pioneers of the air waves.

Present conditions in Hollywood with respect to the broadcasting picture makes one think of the early days of talking pictures, when a hub-bub of excitement followed the first success in this field. The picture industry went wild in its effort to give the public something that was different and as a result most anything offering a person a chance to stand before the cameras and talk, was put on film and crammed down the throats of the public that paid their way into the theaters.

Radio programs, jammed to the brink with picture names, seems to have suffered the same fate. Probably it was the feeling that people had seen the faces of their favorite stars on the screen would like to listen to them on the air. But who ever it was that sold the bill of goods, forgot that emoting before a person's eyes was different than emoting before a person's imagination. Thus writers, producers and performers have been forced to throw off the more important entertainment features, and attempt to build programs around individuals on the air that have been typed on the screen. These attempts might not have been wasted in so many instances if it was not for the fact that entirely new plays had to be pounded out week after week.

With action of various studios calling a halt on their stars appearing on radio, it will be a boon to broadcasting. It should give the pioneers of this type of entertainment a much sought after break, bring many of them back to the microphone, and above all result in writers and producers offering a higher type of entertainment, better material and shows that are built around 'The Plays The Thing' instead of trying to build-up, or hold-up characters that already have been typed in films.

JACKSON PEARSON,
Publisher

Jeanette MacDonald Guest On Guild Show

Jeanette MacDonald will make her only radio appearance of the year one of a minor sensational nature, when she swings "Little White Dove" from the "Gypsy Love Song," along with several semi-classical numbers when she appears on the Screen Guild Show, Sunday, Feb. 19, at 4:30 p. m. on KNX-CBS.

Robert Taylor will aid on the program with a "Jitterbug" selection on the cello that helped him earn his tuition through college, and Charles Winninger, will give a comedy characterization for the musical "A Song From Clotilde."

Hear Him NOW

KING of the TRUMPET

Clyde McCoy
and his
SUGAR BLUES ORCHESTRA

The Palomar

ALL STAR REVUE • DELUXE DINNER 90 • VERMONT AT THIRD • DREXEL 7131

Drama
Music
News

RADIO NEWS WEEK

"Geared to the Tempo of a Newspaper"

Telephone FEderal 5103

Sports
Comedy
Education

RADIO NEWS WEEK may be obtained from ANY
RALPHS GROCERY STORE EACH WEEK.

By mail subscriptions are \$1.50 per year. Single copies 5 cents each. Mail \$1.50 together with your name and address to Radio News Week, 721 South Mariposa, Los Angeles, California.

Studio Executives Order More Movie Stars Off Air

NETWORKS TO REPORT ROYAL PARTY VISIT

When King George and Queen Elizabeth of England, visit the United States shores, from May 15 to June 15, their every move and action will be reported by air over the three transcontinental networks in this country, the Canadian Broadcasting Corporation and the British Broadcasting System in Canada.

It will mark the first visit ever paid America by a reigning King and Queen of the British Isles. One of the most elaborate set-ups of transcontinental and transoceanic broadcasting ever attempted for two individuals are now in their formation through the special events department of the Columbia, National and Mutual coast-to-coast networks. The first word to America from shores of this side will be uttered by the distinguished visitors on May 15, from Quebec.

From this point they are expected to travel by easy stages to Niagara Falls, arriving on June 7. While in the United States on a three day visit most of the time will be spent in Washington.

New Sec. Commerce On Air Friday, 24th

Harry L. Hopkins, speaking over the radio for the first time as the Secretary of Commerce of the United States, will deliver a quarter hour address on KNX-CBS, Feb. 24, on "Government and Business."

He will speak before the Des Moines, Ia., Economic club. As there has been much speculation in the press as to Hopkin's attitude toward industry, his talk is destined to prove of unusual interest for the people of this country and foreign nations because of trade relations.

Because of the importance of the program, "Calling All Cars" will not be heard at its regular period on this day only. Hopkin's speech will be carried throughout the world by short wave stations of the Columbia Broadcasting System.

Loses Pal



Bob Burns

Boyhood Pal Inspired Many Burns Sketches

Cy Cordell, a boyhood companion of Bob Burns and principal figure in hundreds of Bob's radio sketches is dead. He died just before Christmas in Van Buren, Ark.

For the past three years Cy Cordell, who ran Van Buren's hardware store, figured in many of Burns stories. Somewhere in the scenario of every Burns motion picture, that named appeared. He figured in the hunting and fishing stories and other whoppers related to the radio audience by Bob. It was in his hardware store that many of Grampa Snazzy's antics took place.

Virtually every choice bit of philosophy Grampa Snazzy uttered was in front of this picturesque store where Van Burenties in the old days bought all their fishing tackle, shotgun shells, candy sticks and animal skins.

Cordell was the man who sold Grampa Snazzy 27 cases of shotgun shells and eight cases of rifle cartridges and agreed to deliver them to a designed spot in Africa. Deal was called off when he remembered he only had a small boy and a bicycle to make the deliveries.

Until the time of his death, Cy Cordell recieved as much mail as any man in Arkansas. Kraft Music Hall listeners were always writing to ask if fishing and hunting in the surrounding country was as good as Bob Burns claimed. Hunters from all over the United States stopped at his hardware store to purchase hooks

(Continued on Page 17)

MOTION PICTURE THEATER OWNERS DEMAND ACTION

Sudden switch in the broadcasting picture has taken place in the past two weeks that will mean an entirely new set-up for the industry before many more weeks pass. Hollywood's studio executives have ordered many of the pictures stars off the airways as far as commercial programs are concerned, and Metro-Goldwyn-Mayer studios have cancelled their contract with Maxwell House coffee for the Good News of 1939 airshow, effective next July.

Movement to take the 'big names' of the picture world off the airlines started some weeks back when independent theater owners and exhibitors, declared war against so many picture people being on the radio. Their cause was just in the fact they claimed from 35,000,000 to 40,000,000 people remained at home on Saturday and Sunday to listen to radio programs that featured more than 40 stars of the screen.

As a result picture films were unwinding in their theaters to empty seats, where in the past Mr. and Mrs. Public crowded the picture houses and stood in line for seats over the weekend periods.

Darryl Zanuck, in charge of production at 20th-Century Fox studios, took the first step when he settled Tyrone Powers contract with the Woodbury people. The next step came last week when MGM announced they would step out of the radio picture with their Good News program. The studio was paid \$20,000 weekly to put this show on the air.

Following this came Ronald Colman's
(Continued on Page 17)

Kaltenborn Voted Best News Analyst

H. V. Kaltenborn has been voted the nation's best news analyst and Ted Husling the country's top sports commentator, according to tallies of a coast-to-coast poll of radio columnists and editors conducted under the sponsorship of Radio Daily, a broadcast industry trade paper. Guy Lombardo, a CBS feature, and his orchestra were voted the winner in the dance orchestra group.

HOW ALUMINUM BECAME POPULAR

How America became the leading aluminum manufacturing center of the world will be told in a romantic story on the 141st World Is Yours series, Sunday, Feb. 19. The program is sponsored by the Office of Education of the U. S. Department of the Interior and the Smithsonian Institute, airing here over KFI-NBC.

The story begins in 1886, when Charles M. Hall, 22, working with homemade instruments in a woodshed, developed the electrolytic process for making aluminum. However, the cost of producing the metal was so high that it equaled that of precious metals.

The electrolytic process reduced the cost from \$100 to 20 cents a pound. The huge bauxite deposits of Arkansas supply the aluminum industry in the United States. Today it is used for shoe-eyelets, ships, bathtubs, airplanes, bridge spans, automobiles and hundreds of other useful articles.

Secret Poll Held By CBS Backstage Club

"Scram" unofficial backstage organization of CBS stagehands at Columbia Square Playhouse, held their first annual secret poll last week, and the following is what they decided about radio stars: Best Dressed Conductor, Ray Noble and Ben Pollock. Loudest socks, worn by unnamed trumpeter in Nobel's Orchestra. Largest amount of left over apple cores, scripts, memos, and cigars, Eddie Cantor's tribe. Loudest rehearsal, Burns and Allen. Quietest rehearsals, Silver Theater. Worst dresser, The Mad Russian. Best Dressed Woman, Claire Trevor. Best Dressed Announcer, Carleton Kadell, Screwiest Stooge, Paul Douglas. Biggest Patron of Apple Machine, Edward G. Robinson, and Most Incessant Script Doodler, Jack Haley.

Carl Hoff's Band On "Show of the Week"

Carl Hoff's musicians swing out in the stellar spot on the KHJ-Mutual network program the "Show of the Week" which is a cavalcade of outstanding music, when it rides the airways Sunday, Feb. 19 at 3:30 p. m. Hal Kemp and his band have the assignment for the following week.

Ted Weems, his orchestra and two popular soloists, Perry Como and whistling Elmo Tanner, take over the role on March 5th. Horace Heidt and his broadcasting Brigadiers dominate the spotlight on March 12th.

Lovely Blue



Name Spring Shade In Honor 'Miss Blue'

"Buzz Me Miss Blue" who is secretary of the Amos 'n' Andy radio offering on KFI-NBC, was the recipient of a signal honor conferred upon her by the Affiliated Fashionists of California and the Los Angeles and Hollywood Millinery Guild at a recent Market Week held in the Biltmore Hotel.

The organization named a new spring shade, "Genevieve Blue" in her honor. The distinction was formally accorded the honor at a dinner attended by fashionists, millinery and gown designers, newspaper fashion correspondents and buyers from New York, Paris and London.

"Miss Blue" is Madaline Lee in private life, hailing from Dallas, Tex.

Style in Spotlight

By FRANCES SCULLY

With wintry blasts from the snow-capped mountains giving the California sun keen competition, the late winter styles must be warm . . . and I do mean warm.

Lovely Irene Rich, who is perfection in her choice of clothes, was glimpsed at Santa Anita recently in a charming costume which features a chubby beaver bolero. The dress is simply designed of sheer plaid wool, the color scheme favoring the light violet shades. Her hat of matching beaver features a snood. Her platform shoes, handbag and gloves are brown suede. As her only touch of brilliance, the NBC dramatic star, chooses a brightly colored necklace of rose colored and amethyst stones.

BLACK PROPHECIES TREND IN RADIO

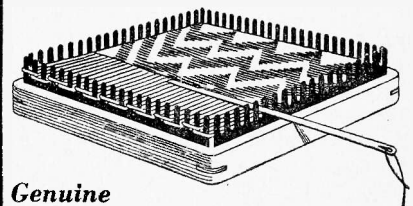
Frank J. Black, considered radio's prophet of the future, who for the past eight years has gained a wide reputation for his prognostications of what would happen during the coming year in broadcasting. He claims that each year he has attained a record of 70 per cent of his predictions coming true.

The following is what he has outlined for 1939 in radio:

"Composers will regard radio as a serious vehicle and they will really open up a field of writing original music for dramatic programs. Audience participation programs will be on the wane by the end of the year. Swing as we now know it will be almost wholly replaced by a new popular music of elegance unless there is a war.

"Raucousness will disappear from music and different instrumental combinations will be developed. Unfortunately, practically no new vocal talent will be discovered. No less than three sponsors will put on good dramatic programs without 'big names' and their success will again prove that 'the play's the thing'.

SPECIAL OFFER!



Genuine

JIFFY LOOMS

FOR ONLY **10c** TO USERS OF

WHITE KING SOAP

Loom weaves afghans, spreads, material for dresses, sweaters, etc. . . . quickly, inexpensively. Saves time and yarn. Full 4-inch size, wood frame, fibre needles, special steel needle. Free instructions for many designs sent with each loom.

Just mail 10c in coin and seal of quality from GIANT size White King Soap box to Dept. R., White King Soap Co., Los Angeles.



OFFER LIMITED ACT TODAY

First Lady of Stage On Kate Smith Hour

Helen Hayes first lady of the American stage will make one of radio's most unusual "request" guest appearances when she visits Kate Smith's Hour broadcast on the KNX-CBS network, Thursday, Feb. 23, at 8:30 p. m. The appearance will be unusual, because Miss Hayes made the request herself. She stated she had always wanted to broadcast with Kate, whom she admires and who is also a Washingtonian.

Miss Hayes who has been starring on the stage in the title role of "Victoria Regina" for the past four years, will select a microphone vehicle appropriate to the day before Washington's birthday.

Cantor Airs From Fair

Eddie Cantor takes his Camel Caravan to the San Francisco World's Fair for their broadcast on Monday, Feb. 20th, over KNX-CBS, at 7:30 p. m. Those making the trip with him will include the Mad Russian, Sid Fields, as Mr. Guffy, Bert Parks, and Edgar Fairchild, who accompanied him northward for the opening ceremonies over the week end.

Carroll on Texaco

Madeline Carroll will make the guest appearance in the dramatic spot on the Texaco Star theater, on Washington's birthday, Wednesday, Feb. 22, at 6:00 p. m. on KNX-CBS.

Jolson Goes Double

Cliff Nazarro, double-talking comedian, and Marjorie Wilson, author of "Charm, the New Etiquette" will furnish the spice for Al Jolson during his weekly broadcast Tuesday, Feb. 21, at 9 p. m. on KNX-CBS.

Dedicated To Expo

Frank Crumit and Julia Sanderson, the two generals of the weekly airshow "Battle of the Sexes" will dedicate their Monday, Feb. 20th program to the Golden Gate International Exposition, over the KNX-CBS network from New York, at 9:30 p. m.

Nick Lucas Back

Nick Lucas, the singing troubadour of radio fame, will be the guest of Al Pearce and his Gang, on the Monday, Feb. 20th show hitting here on KFI-NBC at 7:30 p. m. He will sing his old favorite that helped to make him famous on the air, "Bye, Bye, Blackbird."

Leeds To Repeat

Andrea Leeds and John Garfield will do the second episode of the Columbia Silver Theater's production "Escape From Tomorrow" during the show, Sunday, Feb. 19, at 3 p. m.

PROGRAM HIGHLIGHTS FOR WEEK

FEBRUARY 19 TO 25

SUNDAY

8:30 a. m. Major Bowes, KNX.
9:00 a. m. Radio City Music Hall, KECA.
9:30 a. m. Univ. Chicago Round Table Discussion, KFI.
10:30 a. m. Salute to New York World's Fair, KFI, KNX, KHJ.
11:00 a. m. Magic Key of RCA, KECA.
12:00 p. m. Philharmonic-Symphony Society of New York, KNX.
2:00 p. m. Metropolitan Opera Auditions of the Air, KECA.
2:00 p. m. The Steelmakers, KHJ.
3:00 p. m. Silver Theater, Andrea Leeds; John Garfield, KNX.
3:30 p. m. Gateway to Hollywood; Talent Guest, KNX.
3:30 p. m. Prof. Puzelwit, KFI.
3:30 p. m. Show of the Week; Ray Perkins, MC, KHJ.
4:00 p. m. Woodbury Playhouse; Charles Boyer, Gail Patrick, KFI.
4:30 p. m. Screen Guild Show; George Murphy, MC, Jennette McDonald, Robert Taylor, KFI.
4:30 p. m. Fitch Bandwagon, Gene Krupa's Orch., KFI.
5:00 p. m. This Is New York, KNX.
5:00 p. m. Chase & Sanborn Hour, Don Ameche, Charlie McCarthy, Edger Bergen, Dorothy Lamour, Marlene Dietrich, KFI.
6:00 p. m. Ford Sunday Evening Hour, KNX.
7:00 p. m. The Circle, Basil Rathbone; John Gunther, KFI.
7:00 p. m. Bob Benchley, Artie Shaw's Orch., KNX.
8:00 p. m. Walter Winchell, KFI.
8:30 p. m. Jack Benny, KFI.
9:00 p. m. Ben Bernie, KNX.
9:30 p. m. One Man's Family, KFI.

MONDAY

9:30 a. m. Farm and Home Hour, KECA.
11:00 a. m. Nation's School of the Air, KHJ.
6:00 p. m. Lux Radio Theater, KNX.
6:00 p. m. Hour of Charm; Spitalny's Orch., KFI.
6:30 p. m. Eddie Duchin Orchestra; Morton Downey, KFI.
7:00 p. m. Carnation Contented Hour, KFI.
7:00 p. m. Guy Lombardo, KNX.
7:30 p. m. Al Pearce and Gang, KFI.
7:30 p. m. Cantor's Camel Caravan, KNX.
8:30 p. m. Voice of Firestone; Margaret Speaks, KFI.
9:00 p. m. Cavalcade of America, KNX.
9:00 p. m. Listen Ladies, KEHE.
9:00 p. m. Hawthorne House, KFI.
9:30 p. m. Sophie Tucker, KNX.

TUESDAY

5:30 p. m. Information Please; Quiz Program, KFI.
6:00 p. m. We, the People; Gabriel Heatter, KNX.
6:30 p. m. Benny Goodman Swing Orch., KNX.
6:30 p. m. Fibber McGee, KFI.
7:00 p. m. Bob Hope; Jerry Colonna, KFI.
7:30 p. m. Jimmy Fidler, Movie Gossip, KNX.
8:30 p. m. Big Town; Edward G. Robinson, KNX.
8:30 p. m. Johnny Presents; Johnny Green Orch., KFI.
9:00 p. m. Al Jolson; Martha Raye, KNX.
9:30 p. m. The Grouch Club, KNX.
9:30 p. m. Signal Carnival, Variety Show, KFI.

Manning Triples In Brass

Knox Manning, who does a "Headliens on Parade" broadcast on KNX-CBS, has just finished a three-way job in connection with the Douglas Corrigan film, "The Flying Irishman" at RKO Radio studios. Manning wrote the narrative, served as commentator and appears as a member of the cast. It marks his first appearance in a major part on the screen.

WEDNESDAY

5:30 p. m. Hobby Lobby; Dave Elman, KFI.
6:00 p. m. Texaco Star Theater, KNX.
7:00 p. m. Kay Kyser, College of Musical Knowledge, KFI.
7:00 p. m. "99 Men and a Girl", Raymond Paige, Salute to Washington's Birthday, KNX.
7:30 p. m. Ask-It-Basket, KNX.
8:30 p. m. Paul Whiteman, KNX.
8:30 p. m. Tommy Dorsey and Orch., KFI.
9:00 p. m. Fred Allen; Town Hall Tonight, KFI.
9:00 p. m. Gang Busters, KNX.
9:30 p. m. Sophie Tucker, KNX.

THURSDAY

5:00 p. m. Rudy Vallee Variety Hour, KFI.
5:30 p. m. Joe Penner, KNX.
6:00 p. m. Major Bowes Amateur Hour, KNX.
6:00 p. m. Good News of 1939; Frank Morgan, Bob Young "Baby Snooks", KFI.
7:00 p. m. Bing Crosby and Bob Burns, KFI.
7:00 p. m. Tune-Up Time, Walter O'Keefe; Andre Kostelanetz, KNX.
8:15 p. m. Standard Symphony Hour, KFI.
8:30 p. m. Kate Smith Variety Show, KNX.
9:30 p. m. I Want a Divorce, KNX.

FRIDAY

10:45 a. m. Voice of Experience, KHJ.
11:00 a. m. Nation's School of the Air, KHJ.
3:30 p. m. Today with Bob Trout, KNX.
5:00 p. m. Warden Lawes Criminal Cases, KFI.
6:00 p. m. Campbell Playhouse; Orson Welles, KNX.
7:00 p. m. Guy Lombardo, KFI.
7:00 p. m. Grand Central Station, KNX.
7:30 p. m. Calling All Cars, KNX.
7:45 p. m. Jimmy Fidler, Movie Gossip, KFI.
8:30 p. m. Burns and Allen, KNX.
9:00 p. m. Gilmore Circus, KFI.
9:00 p. m. First Nighter, KNX.
9:30 p. m. Jack Haley Wonder Show; Virginia Verrill, KNX.
10:00 p. m. Sophie Tucker, KNX.

SATURDAY

8:00 a. m. Cincinnati Conservatory, KNX.
9:00 a. m. American Education Forum, KECA.
10:55 a. m. Metropolitan Opera, KFI.
12:00 p. m. London Music Hall, KHJ.
3:00 p. m. Kaltenmeyer Kindergarten, KFI.
5:00 p. m. Tommy Rigg's Quaker Party, KFI.
6:00 p. m. Phil Baker.
7:00 p. m. Hit Parade; Lanny Ross, KNX.
7:00 p. m. NBC Symphony, KECA.
8:00 p. m. National Barn Dance, KFI.
8:00 p. m. Joe E. Brown; Gill and Deming, KNX.
8:30 p. m. Johnny Presents; Johnny Green Orch., KNX.
9:00 p. m. Fred Waring, KFI.
9:00 p. m. Professor Quiz, KNX.
9:30 p. m. Avalon Time, KFI.
10:00 p. m. This Week in Review, KFI.

World in Action

For an instructive and entertaining half hour, tune in to KMTR Sunday evenings at 9 to heard the WORLD IN ACTION. This program, which runs for a half hour, is a stirring re-enactment of the news and the stories behind the news of the preceding week. Norman Page writes the script, and produces this dramatic show.

VERSATILE NILES



Ken Niles

Ken Niles has introduced more than a thousand film luminaries to the radio audience since he turned announcer in 1931. Now he is master of ceremonies on the 'Gateway To Hollywood' search for new talent. Other duties in his line are actor, announcer, and director of radio shows, along with serving as head of the dramatic school for aspirants who have been selected

to appear on the 'Gateway' show. This show is heard on KNX-CBS each Sunday at 3:30 p. m.

VETERAN RADIOER

Bert Parks, heard on the Eddie Cantor-Camel Caravan show on KNX-CBS, Monday night, was an announcer and network singer before he was old enough to vote. He is only 25 now. He joined the show during its recent visit to New York. Parks hails from Atlanta, Ga., and despite his age is one of the Columbia networks veteran staff men.



Bert Parks

Weaver Joins KEHE As Commentator

Hank Weaver, assistant to many Los Angeles sportscasters for the past two years, moved into a sportscasting role in his own right over KEHE this week.

Weaver, now conducting "Today in Sports" over KEHE daily at 6:45 p. m. and handling other sports casts, replaced Reid Kilpatrick, resigned.

Bing Crosby Turns Fire Fighter

Bing Crosby turned fire fighter recently when a fire broke out in the dressing room of the NBC studios where he was going over the Kraft Music Hall script with Bob Burns. The flame was unnoticed until a full wastebasket suddenly threw out flames. CALMLY? Bing WALKED over, found fire extinguisher, and smothered the flame before it had reached dangerous proportions.

Crosby's pipe was judged guilty of starting the blaze, which might have reached dangerous proportions if Bing had not acted quickly.

Leading Radio Stars Were Kid Performers

Many of today's radio stars didn't just fall into the broadcasting business and become famous over night. Some of the leaders of this new entertainment profession, really can date their experience back to the days when other kids of the neighborhood were learning nursery rhymes. They weren't just showing off for mother's friends in the front parlor either, they were really doing stage duty. Skipping over a few names of the radio log we find the following:

Take Betty Winkler, for example. The little leading lady of Girl Alone remembers having made her stage debut, singing "Margie," at the age of four, covered with blackface makeup.

Les Tremayne, leading man of the First Nighter dramas, was earning a professional salary at the age of three and a half, playing in those drawing-room and garden party scenes in London movies.

Betty Lou Gerson got in just under the wire—in nursery thespianism. She was six before she made her bow; but it was a deep one. The role demanded that Betty Lou fall off the davenport and cry hysterically. It all seemed so real that the little Birmingham girl couldn't control her sobs for two hours.

Alice Hill, star actress in Betty and Bob, also waited until she was six before allowing drama to get into her bloodstream. It was then she started directing the neighborhood youngsters in plays, staged in the basement of her home. She charged a full cent.

'EXTRAS' TO 'MIKE'

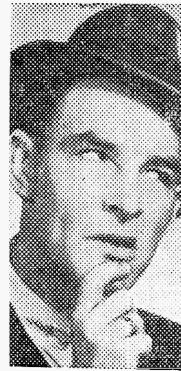
John Conte is a young fellow that screamed his way from selling extras on Hollywood street corners to selling 'commercials' in a Hollywood radio studio. Not so many years ago Conte was making 20 cents a night selling newspapers. He tried out for an announcers berth and was signed. Now he is heard on the new Screen Guild Show, at 4:30 p. m.



John Conte

Sunday and on the Silver Theater program at 3:00 p. m. on the same day. Both shows air over KNX-CBS.

PRODUCER-HECKLER



Ed Gardner

Producer Ed Gardner on the radio show 'This Is New York' one of the newer hits riding Sunday evening on KNX-CBS, also is 'Archie' the chief heckler who gives the accounts of goings-on in 'Duffy's Bar and Grill' on the program. Gardner suggested the part to script writers but overlooked getting a performer. He read the lines in rehearsals so well the cast demanded he should remain in the spot.

AIR SERIALS

Sons of the Pioneers.....	8:00	KHJ	Myrt and Marge....	1:15	KNX
Haven of Rest.....	8:15	KNX	Stella Dallas.....	1:15	KFI
Virginia Lane.....	8:15	KECA	Vic and Sade.....	1:30	KFI
Mirandy (Tues. to Sat.)...	8:45	KHJ	Hilltop House.....	1:30	KNX
David Harum.....	8:45	KFI	Stepmother.....	1:45	KNX
Carters of Elm St.....	9:00	KFI	The O'Neills.....	1:45	KFWB
Her Honor Nancy James....	9:15	KNX	Girl Alone.....	1:45	KFI
The O'Neill's.....	9:15	KFI	Scattergood Baines.....	2:00	KNX
Home Town.....	9:15	KHJ	Houseboat Hannah.....	2:00	KFI
Romance of Helen Trent...	9:30	KNX	Life and Love of Dr. Susan.	2:15	KNX
Bridge Club.....	9:30	KFI	Johnson Family.....	2:15	KHJ
Kitty Keene.....	9:30	KFWB	Guiding Light.....	2:15	KFWB
Our Gal Sunday.....	9:45	KNX	Young Dr. Malone.....	2:30	KFI
John's Other Wife.....	10:00	KFI	Kitty Keene.....	2:45	KNX
The Goldberg's.....	10:00	KNX	Ma Perkins.....	3:00	KNX
Just Plain Bill.....	10:15	KFI	Story of Mary Marlin.....	3:15	KFWB
Life Can Be Beautiful.....	10:15	KNX	Heart of Julia Blake.....	3:15	KNX
Road of Life.....	10:30	KNX	Woman's Magazine.....	3:30	KFI
Peables Takes Charge.....	10:30	KECA	Father and Son.....	3:45	KECA
Dangerous Roads.....	10:30	KFI	(Mon.-Wed.-Fri.)		
Tena and Tim, (Mon.,	10:45	KNX	Easy Aces.....	4:00	KFI
Wed., Fri.)			(Tues., Wed., Thur.)		
Voice of Experience.....	10:45	KHJ	Ma Perkins.....	4:00	KFWB
(Mon., Wed., Fri.)			Pepper Young's Family.....	4:15	KFWB
Dr. Kate.....	10:45	KFI	Art Baker's Notebook.....	4:30	KFI
Road of Life.....	10:30	KNX	Howie Wing.....	5:15	KNX
Nation's School.....	11:00	KHJ	Dick Tracy.....	5:30	KHJ
Big Sister.....	11:00	KNX	Little Orphan Annie.....	5:45	KHJ
Betty and Bob.....	11:00	KFI	Jack Armstrong.....	6:00	KHJ
Aunt Jenny's Stories.....	11:15	KNX	Gen. Shafter Parker.....	6:15	KHJ
Arnold Grimm's Daughter...	11:15	KFI	Phantom Pilot.....	7:00	KHJ
Vallant Lady.....	11:30	KFI	(Mon.-Wed.-Fri.)		
Story of Mary Marlin.....	12:00	KFI	Lone Ranger.....	7:30	KHJ
Ma Perkins.....	12:15	KFI	(Mon.-Wed.-Fri.)		
Pepper Young's Family.....	12:30	KFI	Amos 'n Andy.....	8:00	KFI
Guiding Light.....	12:45	KFI	Lum and Abner.....	8:15	KNX
Yours Sincerely.....	12:45	KNX	(Mon.-Wed.-Fri.)		
(Mon.-Wed.-Fri.)			Frank and Archie.....	9:15	KHJ
Pretty Kitty Kelly.....	1:00	KNX	(Sun.-Mon.-Tues.)		
Backstage Wife.....	1:00	KFI			

Cracklin's

Kellogg's sure took on a whale of a job when they started out to square that CIRCLE . . . Our suggestion would be a conference, which is short in lots of CIRCLES for a free for all word battle, then what ever is decided in the conference—forget it. Then go out and hire a good band, get a comedian, a fair to middling vocalist and buy Charlie McCarthy and his mouthpiece from Chase and Sanborn and the problem is six, two and even and four square—so'elp Me folks, so'elp me . . .

* * *

Von Zell of Town Hall, We, The People; Ben Bernie; Al Pearce and the Phil Baker program is a busy man . . . to wit his schedule is as follows;—Sundays, two rehearsals and two broadcast with Ben Bernie—Monday ditto with Al Pearce, Tuesdays, We, The People; Wednesdays rehearsals and two Fred Allen Town Hall Tonights; Thursdays, rehearsal and preview of the Phil Baker show; Friday, he can do anything he likes but Saturday its another rehearsal with Phil Baker and at night the regular program . . . and, to those toiling souls who have a tough time of it making their way through one thirty minute show each week we give you the Von Zell, Harry for short and tops in his line of endeavor.

* * *

Radio Digest a new mag on the stands this past month is well worth the buy for just one article which is a reprint of a broadcast given by Richard Brooks over Station WNEV New York. The article "SIXTY MILLIONS WILL DIE" is one of the most forcefully written pieces against war it has ever been our privilege to hear or read and it would be a blessing could every American in these United States spend a few minutes reading this short pithy true synopsis of WAR in all its GLORY. Better still that some of our local stations rebroadcast it.

* * *

Rumor has it says the typing tipster that Benny Goodman is negotiating with a film concern who are plannig to star the swingmaster in a filling tentatively titled "Cavalcade of Swing."

* * *

Names make News and the name Bob Trout stands for News in the sphere of Radio so to radio's weird vernacular has been added the phrase, "Doing a Bob Trout," which means gathering fresh news or, being thar' when it happens . . .

* * *

Lionel Hampton, Benny Goodman's Vibraphonist was at one time trick trap drummer in Louie Armstrong's band out at Frank Sebastian's old Cotton Club

Joins Family



Lucy Gillman, youthful actress who has been on radio more than half her life, is newest addition of One Man's Family on KFI-NBC Sunday. She is Laura Parker.

Hitler says that his is a model government, which gives Al Jolson a laugh because he knows that Webster's defines "Model" as "an imitation of the real thing!"

True A Theme Note For "Tune-Up Time"

Music lovers the country over await the theme note of "Tune Up Time" to tune-up their instruments, when a single note is carried across the country, exactly at 7 p. m. every Thursday evening on KNX-CBS. The note is a "True A Natural," an international pitch.

Immediately in homes, clubs, and musical centers throughout the country, the note is sounded again on hundreds of instruments, ranging from a Guadagnini owned by some wealthy violinist in an Oshkosh Wisc., string quartet, to a battered saxophone that is the proud possession of an Umpha Pi man in Jacksonville, Fla.

Musicians and music lovers from Maine to California make it a weekly habit to tune their instruments by the theme of the new CBS variety show. The pianist sounds the note first. Then it is picked up by the string section of Conductor Andre Kostelanetz's 45-piece orchestra.

Columbia technicians make sure it is a true A—440 vibrations per second—by checking the note very carefully five minutes before the program goes on the air. To obtain the truest rendition of the tune, a special small microphone is placed inside the piano near the A string.

How to make friends
and
Influence Husbands!
Always Keep One of

Delicious Cakes
In the cake box.

White Cakes, made with egg whites, Crisco and Swansdown Cake Flour, generously topped with a variety of luscious frostings. 29c

Yellow Cakes, made with whole eggs, real butter and Swansdown Cake Flour, with that favorite frosting of men—Chocolate! 30c

Devil's Foods, rich, moist and dark—Mmmm! 29c.

Angel Food hand made—light and tender as foam.
23c Plain; 25c Iced

★ ★ —Special This Week— ★ ★

Lady Baltimore Cake—Rich and Good, from an historic old American Recipe. . . .
30c from

Modernized Bakery
at
"Sells for less" prices

Ralph's
GROCERY COMPANY
SELLS FOR LESS

SUNDAY

Feb. 19, 1939

HOUR-BY-HOUR DAILY LOG

Listings below were absolutely correct at press time. Radio News Week is not responsible for changes.

6 to 7 a. m.
 KMTR—6, California Theater.
 KFVD—6, Spanish Church.
 KGFJ—6, Melodies.
 KFOX—6, El Despertador.

7 to 8 a. m.
 KMTR—7, California Theater.
 KMPC—7, Enduring Memories.
 7:30, Melodies.
 KEHE—7, Morning Melodies.
 KFVD—7, Spanish Church.
 KNX—7, With the Classics.
 KRKD—7:15, Rev. Squires.
 7:45, News.
 KGFJ—7, Melodies.
 KFOX—7, El Despertador, 7:30.
 Variety, 7:45, Rev. Delinder.
 KFAC—7:30 Funny Paper Man.
 KGER—7, News, 7:05, Missionary Church.

8 to 9 a. m.
 KFI—8, News, 8:05, Julio Martinez Qyangura, 8:15, Chimney House, 8:30, Meridian Music.
 KNX—8, West Coast Church, 8:30, Major Bowes.
 KHJ—8, Examiner Funny Paper Man, 8:30, Raoul Nadeau, 8:45, Food for Thought.
 KFWB—8, Melodies, 8:30, Union Rescue Mission.
 KECA—8, Church Quarter Hour, 8:15, Neighbor Nell, 8:30, Southernaires.
 KEHE—8, Sunday School, 8:30, Hymn Time, 8:45, Early Edition.
 KMTR—8, Anthony Zeoli, 8:30, National Message, 8:45, Bob Shuler.
 KMPC—8, Christian Businessmen, 8:30, Swedish Tabernacle.
 KFVD—8, Rev. Joe Salas, 8:30, Church of Christ.
 KGFJ—8, Serenade, 8:15, Standard Quartet, 8:30, Stan Myers Orchestra.
 KFOX—8, Rainbow Trio, 8:30, Harry Bluestone.
 KFAC—8, Country Church of Hollywood, 8:45, Sunday School.
 KGER—8, News, 8:05, Sabbath Songs, 8:30, Peace Gospel.

9 to 10 a. m.
 KFI—9, Dr. Casselberry, 9:15, Singers, 9:30, Univ. of Chicago Round Table.
 KNX—9:00, Major Bowes, 9:30, Salt Lake Tabernacle.
 KHJ—9, Choir, 9:15, Dr. Corbin, organ, 9:30, Lamp Lighter, 9:45, American Wild Life.
 KFWB—9, Union Rescue Mission, 9:30, Over Garden Fence, 9:45, Desert Stories.
 KECA—9, Radio City Music Hall.
 KEHE—9, P. E. Gardner, 9:30, Tunes and Tempos, 9:45, Eddie Brackett.
 KMTR—9, California Theater.
 KMPC—9, Dr. Vous, 9:30, Hymns.
 KFVD—9, Central Tabernacle, 9:30 Bible School.
 KRKD—9, Musical Moments.
 KGFJ—9, Freddie Rich, Orch, 9:15, Hawaiians, 9:30, Hit Revue.
 KFOX—9, Sunday Musicale
 KFAC—9:15, Dr. Frank McCoy, 9:30, Three Quarter Time, 9:45, Mrs. G. W. Ballard.
 KGER—9, News, 9:05, Central Pentecostal.

10 to 11 a. m.
 KFI—10, Physical Well Being, 10:15, Tune Travelogue, 10:30, Salute of Nations to N. Y. World Fair.
 KNX—10, Church of the Air, 10:30, Salute to N. Y. World Fair.
 KHJ—10, Sumner Prindle, 10:15, Romance of Hi Ways, 10:30, Salute to N. Y. Worlds Fair.
 KFWB—10, Dr. Cook, 10:15, Methodist Church, 10:30, Music in the Air.
 KEHE—10, Symphony Hall.
 KMTR—10, Madame Reinhart.

DIAL INDICATOR

<p>KMTR—Hollywood 570 KFSD—San Diego 600 KFI—Los Angeles 640 KMPC—Beverly Hills 710 KEHE—Los Angeles 780 KIEV—Glendale 850 KHJ—Los Angeles 900 KFWB—Hollywood 950 KFVD—Culver City 1000 KNX—Hollywood 1050 KFSG—Los Angeles 1120</p>	<p>KRKD—Los Angeles 1120 KGFJ—Los Angeles 1200 KFYM—San Bernardino 1210 KFOX—Long Beach 1250 KFAC—Los Angeles 1300 KGB—San Diego 1330 KGER—Long Beach 1360 KECA—Los Angeles 1430 KVOE—Santa Ana 1500 KGPL—L. A. Police 1712</p>
--	--

KECA—10:15, Tolstoy's Redemption, 10:30, Standard Radio Transcription, 10:45 Looks at Books.
 KMPC—10, Variety.
 KRKD—10, Musical Moments.
 KFSG—10:30 Morning Worship.
 KGFJ—10, Freddie Berrens Orch, 10:30, Jimmy Walsh Orch, 10:45, Sammy Liner.
 KFOX—10, Pacific Paradise, 10:15, The Visitor, 10:45, Variety.
 KGER—10, News, 10:05, Bible Class, 10:45, I Am.

11 a. m. to 12 Noon
 KFI—11, Aunt Fannie Sunday Dinner, 11:30 Barry McKinley, 11:45, Fables in Verse.
 KNX—11, American All-Immigrants All, 11:30, Charlie Lung, 11:45, To be announced.
 KHJ—11, Life Begins Today, 11:15, Sinfonietta, 11:30, Voice of Two Worlds.
 KFWB—11, Hard of Hearing, 11:30, Jean Leonard.
 KECA—11, Magic Key of RCA.
 KEHE—11, Popular Parade, 11:45, Opportunities for men.
 KMTR—11, Madame Reinhart, 11:30, Rhea Crawford.
 KMPC—11, First M. E. Church.
 KFVD—11, Jewish Classic Hour.
 KFSG—11, Morning Worship.
 KGFJ—11, Swing Carnival.
 KFOX—11, St. Luke's Church.
 KFAC—11, Harold Rhodes.
 KGER—11, Rev. Chas. E. Fuller.

12 Noon to 1 p. m.
 KFI—12, Sunday Drivers, 12:30, Vivian Della Chiesa, 12:45, Dog Talk.
 KNX—12, N. Y. Philharmonic Orchestra.
 KHJ—12, News, 12:15, On a Sunday Afternoon, 12:30, Meet a Mutual Friend, 12:45, Tony Cabooch.
 KFWB—12, Morgan Family.
 KECA—12, Arco Band, 12:30, Festival of Music.
 KEHE—12, Shadows of Past, 12:15, Opportunities, 12:30, 20th Century Revue, 12:45, Mid-day Melodies.
 KMTR—12, St. Brendan's Church.
 KMPC—12, First M. E. Church, 12:15, Roscoe Presents, 12:30, Noon Airs.
 KFVD—12, Glen Austin.
 KFSG—12, Morning, Worship Off Air, 12:30 to 3 p. m.
 KGFJ—12, This-That.
 KFOX—12, St. Luke's Church, 12:30, Hit Revue.
 KFAC—12:30, Organ.
 KGER—12, News, 12:05, Melodies, 12:30, Jugo Slava.

1 to 2 p. m.
 KFI—1, Ranger Serenade, 1:30, Crawford Caravan.
 KNX—1, N. Y. Philharmonic Orchestra.
 KHJ—1, Harold Stokes Orch, 1:30, Luther Layman's League.
 KFWB—1, G. Allison, 1:30, America Marches On.
 KECA—1, Vespers, 1:30, World Is Yours.

KEHE—1, News, 1:15, Kenna Dome, 1:30, Words and Music, 1:45, Highlights Science.
 KMTR—1, Corriere Dell Aria.
 KMPC—1, Tuneful Topics, 1:15, Varieties, 1:30, Eyes of Youth, 1:45, Singing Strings.
 KFVD—1, Air Editor.
 KRKD—1, All-Request Program.
 KGFJ—1, Concert, 1:45, State Blind Workshop.
 KFOX—1, Billy MacDonald's Orch.
 KFAC—1:30, Maurice Kosloff.
 KGER—1, News, 1:05, Rodolfo Hoyes.

2 TO 3 P. M.
 KFI—2, Uncle Ezra, 2:30, Man From Cook's, 2:45, Organ.
 KNX—2, Golden Afternoon, 2:30, Problem Clinic.
 KHJ—2, Wheeling Revue, 2:30, Rabbi Magnin, 2:45, Elinor Remick Warren.
 KFWB—2, Symphony Hall.
 KECA—2, Metropolitan Opera Auditions, 2:30, Viennese Ensemble, 11:45, New Poetry Hour, 2:45, Otto Clare and Music.
 KEHE—2, Sunday Swing.
 KMTR—2, Hard of Hearing, 2:15, Gates of Hollywood, 2:30, Floyd Johnson.
 KMPC—2, Hawaiian Harmonies.
 KFVD—2:15, World on Air, 2:30, Little Fellow.
 KRKD—2, All-Request Program.
 KGFJ—2, News, 2:15, Studio Party, 2:30, Scholastic Guild, 2:45, Organ.
 KFOX—2, Christian Science, 2:15, Hit Tunes.
 KFAC—2:30, Jack Stearn Presents.
 KGER—2, News, 2:05, Music, 2:15, Charlie Cook, 2:30, Long Beach Band.

3 TO 4 P. M.
 KFI—3, Reserved, 3:30, Prof. Puzzelewit.
 KNX—3, Silver Theater, 3:30, Gateway to Hollywood.
 KHJ—3, Help Thy Neighbor, 3:30, Show of the Week.
 KFWB—3, Symphony Hall, 3:15, Take It Easy.
 KECA—3, Catholic Hour, 3:30, Musical Celebrities.
 KMTR—3, Floyd Johnson, 3:15, Socialist Party.
 KMPC—3, Better Music, 3:30, Calvary Church.
 KFSG—3, Divine Healing Debate.
 KGFJ—3, Organ, 3:30, W. C. T. U. 3:45, Job Daughters.
 KFOX—3, Christian Science Lecture.
 KGER—3, News, 3:05, Henri Scanlon, 3:20, Long Beach Band.

KFAC—3, Sunday Afternoon Concert.
4 TO 5 P. M.
 KFI—4, Woodbury's Playhouse, 4:30, Fitch's Band Wagon.
 KNX—4, Back Home in Montana, 4:30, Screen Actors Guild.
 KHJ—4, Bach Cantata, 4:30, Jim Walsh Orch.
 KFWB—4, Popular Concert, 4:30, Matinee Melodies.
 KECA—4, Out of the West, 4:30, Paul Carson, Organ.
 KEHE—4, Rabbi Kohn, 4:15, Drama, 4:45, Ethel Hubler.
 KMTR—4, Opera.
 KMPC—4, H. M. S. Richards, 4:30, Twilight Melodies.
 KRKD—4:15, All-Request Program.
 KGFJ—4, News, 4:15, Dixie Songsters, 4:30, Golden Gate Exposition, 4:45, Ross Hayward Orch.
 KFOX—4, Concert Master, 4:30, Fireside Church.
 KFAC—4, Salvation Army.
 KGER—4, News, 4:05, Silhouettes, 4:30, Malouf Party.

5 TO 6 P. M.
 KFI—5, Chase & Sanborn Hour.
 KNX—5, This Is New York.
 KHJ—5, Forum of Air.
 KFWB—5, Church Federation, 5:30, Marimba Magic, 5:45, Footprinters.
 KECA—5, Cleveland Orch.
 KEHE—5, Cowboy Church.
 KMTR—5, Martin Luther Thomas, 5:30, Harlem Express.
 KRKD—5, All Request Program.
 KGFJ—5, American Legion, 5:15, Nat Brandwynne Orch, 5:30, Temple Baptist Church.
 KFOX—5, String Time, 5:30, Chick MacGregor.
 KFAC—5, Christian Science, 5:15, Kay Gordon Chorus, 5:30, Markoff Singers.
 KGER—5, News, 5:05, Hit Tunes, 5:15, 4 Square Gospel, 5:30, Church of God.

6 TO 7 P. M.
 KFI—6, Manhattan Merry-Go-Round, 6:30, Album of Familiar Music.
 KNX—6, Ford Sunday Evening Hour.
 KHJ—6, Old Fashion Revival Hour.
 KFWB—6, Voices of the World, 6:30, Streamline Serenade, 6:45, Musical.
 KECA—6, Woodbury Playhouse, 6:30, Readers Guide, 6:45, Reserve.
 KEHE—6, King Cowboy, 6:15, News, 6:30, Emil Baffa's Orch.
 KMTR—6, Harlem Express, 6:30, Collegiate Chin Fest.
 KRKD—6, All Request Program, 6:30, Santaella String Ensemble.
 KGFJ—6, News, 6:30, King's Men.
 KFOX—6, News, 6:10, Island Music, 6:20, Beauty Talk, 6:25, Music, 6:30, Hollywood Brevities, 6:45, W.P.A.
 KFAC—6, News, 6:15, Wilshire Christian Church.
 KGER—6, News, 6:05, Tadpole and Schoolkids, 6:30, Italian News.

7 TO 8 P. M.
 KFI—7, The Circle.
 KNX—7, Robert Benchley, 7:30, Deep River Boys, 7:45, Capitol Opinions.
 KHJ—7, Goodwill Hour.

ALL IN? RADIO REVEALS WHY Locates ailment at Source, tells how to correct it and what to eat

EXAMINATION THIS WEEK—ONLY

DR. JOS. F. BLACK, D.C., 4622 Wilshire Blvd. Los Angeles, California—Phone York 1211

\$ 1 50

SUNDAY

Feb. 19, 1939

HOUR-BY-HOUR DAILY LOG

KFWB—7, Meet the Inventor. 7:30, Reported Missing.
 KECA—7, Maurice Spitalny Orch. 7:30, Cheerio.
 KEHE—7, Blue Room. 7:15, Strolling Tom. 7:30, Concert Miniatures.
 KMTR—7, Forum.
 KFSG—7, Aimee Semple McPherson.
 KGFJ—7, News. 7:30, Rex Melbourne.
 KFOJ—7, Fred Bernes' Orch. 7:15, Strolling Tom. 7:30, Harmony Hall. 7:45, News.
 KFAC—7, Open Forum.
 KGER—7, News. 7:05, Lowell Weeks. 7:30, Eve Eden. 7:45, Players Guild.
8 TO 9 P. M.
 KFI—8, Walter Winchell. 8:15, Irene Rich. 8:30, Jack Benny.
 KNX—8, Life Without Regret. 8:30, Archie Bleyer's Orch.
 KHJ—8, Frost Warnings, Tico Tico Trio. 8:15, World Affairs. 8:30, Dance Orch.
 KFWB—8, Stars Over Manhattan. 8:30, Musicale.
 KECA—8, Press News. 8:05, Noble Sissel Orch. 8:30, Emil Baffa Orch.
 KEHE—8, Presbyterian Church.

KMTR—8, Anybody Can Act.
 KFSG—8, Aimee Semple McPherson.
 KGFJ—8, News. 8:15, Lenny Carson. 8:30, King's Jesters.
 KFOJ—8, Christian Science.
 KFAC—8, Dr. Louis Talbot.
 KGER—8, News. 8:05, Frank Wells. 8:30, Japanese Church.
9 TO 10 P. M.
 KFI—9, Seth Parker. 9:30, One Man's Family.
 KNX—9, Ben Bernie Show. 9:30, Los Angeles Hour. 9:45, News.
 KHJ—9, News. 9:15, Frank and Archie. 9:30, Voice of Prophecy.
 KFWB—9, Curtain Calls. 9:30, News. 9:45, Music.
 KECA—9, Larry Clinton Orch. 9:30, Herbie Kay Orch. 9:45, University Explorer.
 KEHE—9, Carol Lofner Orch. 9:30, Dance Music.
 KMPC—9:30, Mary's Melody Makers.
 KFSG—9, Aimee Semple McPherson. 9:30, Voice of First Nighters.

KGFJ—9, News. 9:15, Night Court Drama. 9:30, Al Williams. 9:45, Ray Sintra.
 KFOJ—9, News. 9:15, Landscape Gardener. 9:30, Dance Music.
 KGER—9, News. 9:05, Musical Moments. 9:15, Charlie Cook. 9:30, Tuckin' In
 KFAC—9, Pan Pacific Auditorium.
 KMTR—9, World in Action. 9:45, Hollywood Journeys.
10 TO 11 P. M.
 KFI—10, News. 10:15, Chapel Quartet. 10:30, Bridge to Dreamland.
 KNX—10, People's Platform. 10:30, Song of Evening. 10:45, Maxine Sullivan.
 KHJ—10, Phil Harris Orch. 10:30, Chuck Foster's Orch.
KFWB—10, Telephone Quiz. 10:30, Leaders in Dancetime.
 KECA—10, Phil-Harmonia.
 KEHE—Roy Dell's Orch. 10:30, Emil Baffa's Orch.
 KMTR—10, Conga Orch.
 KMPC—10, Catherine the Great. 10:30, Joe Morengo Orch. 10:45, Minature Playhouse.
 KFSG—10, Organ Meditations.
 KGFJ—10, News. 10:15, San-

KFOJ—10, Bob Hamilton's Orch. 10:30, Freddie Berrin's Orch.
 KFAC—10:30, Organ.
11 TO 12 MIDNIGHT
 KNX—11, Clyde McCoy's Orch. 11:15, Archie Bleyer's Orch. 11:45, Prelude to Midnight.
 KFI—11, Wax Works.
 KHJ—11, Carvel Craig Orch. 11:30, Playboys. 11:45, Phil Harris.
 KFWB—11, Leaders in Dancetime. 11:30, Symphony Hall.
 KEHE—11, Andy Iona Orch. 11:15, News. 11:30, Clyde McCoy Orch.
 KMTR—11, Melody Lane.
 KMPC—11, Nocturne Swing. 11:30, Less Dance.
 KFVD—11, Fun House.
 KFSG—11, Studio. 11:30, Hawaiian Trio.
 KGFJ—11, News. 11:15, Organ. 11:30, Musicale.
 KFOJ—11, Hit Revue. 11:30, Clyde McCoy's Orch.
 KFAC—11, Mel LeMon.
12 MIDNIGHT
 KMPC—12, Swing Club.
 KFVD—1, Fun House to 4.
 KFSG—12, Jubilee to 3 a.m.
 KGFJ—12, Nite Owl to 6 a.m.
 KFAC—12, Mel LeMon to 6.
 KNX—12, Dancetime.

Prima Donna



Dorothy Ann Crow, 16-year-old soprano, is the prima donna soloist of "It's Wheeling Steel" heard on KHJ-Mutual network at 2 p. m. Sunday. She joined the Musical Steelmakers family one year ago.

Taft-Smith Debate

U. S. Senator Robert Taft, Republican of Ohio, and Representative T. V. Smith, Democrat of Illinois, two important young newcomers to the national political scene, will be heard in the first of a series of weekly discussions on various phases of "Foundation of Democracy," offered by KNX-CBS, Tuesday, Feb. 21, at 2:30 p. m.

"Glacier Priest" On Armco Show Feb. 19

Father Bernard R. Hubbard, known as the "Glacier Priest" will be guest speaker on Dr. Frank Simon's Armco Band program, over KECA-NBC network at noon Sunday, Feb. 19. Father Hubbard will discuss wild life and ice formations on King Island in the Bering Sea, where he recently conducted an expedition. As guest soloist on the program, Yolanda Rita Picucci, 15-year-old Philadelphia flutist, will offer Ganne's "Andante and Scherzo."

Ralph's "SELLS FOR LESS" Ralph's "SELLS FOR LESS" Ralph's "SELLS FOR LESS" Ralph's "SEL

Washington's Birthday Week . . .

Special

Red Cherry Pie

"We cannot tell a lie" . . . if there's a better way to make cherry pie, we haven't heard of it. Crisp, flaky, melt-in-your-mouth pastry, done to a golden brown turn. Chock full of plump, red-ripe Wisconsin cherries—fresh, thanks to quick-freezing at the pick of the season, sweetened with pure cane sugar 'til the rich juices thicken just enough—no gelatin.

Oh Boy!

What a Pie!

25¢

(Try popping it in the oven a few minutes before serving)

You'll like these, too: Lemon, 20c; Pumpkin, 19c; Green Apple, 23c; Custard, 20c; Youngberry, 25c.

from

Ralph's MODERNIZED BAKERY

at

"Sells for less" prices

Ralph's "SELLS FOR LESS" Ralph's "SELLS FOR LESS" Ralph's "SELLS FOR LESS" Ralph's "SEL

MONDAY

Feb. 20, 1939

HOURLY-DAILY LOG

6 TO 7 A. M.

KMPC — 6:45, Cheerful Rhythms.
 KEHE—6, Musical Clock.
 KHJ—6, Rise and Shine.
 KFVB—6, Stu Wilson.
 KFVD—6, Spanish program.
 KNX—6, Sunrise Salute.
 KRKD—6, Early Riser. 6:15, Rev. Johnston. 6:30, News. 6:45, Early Riser.
 KGFJ—6, Concert.
 KFOX—6, El Despertador.
 KFAC—6, Old Time Religion. 6:45, Melodic Gems.
 KGER—6, News. 6:05, Farm News. 6:25, Music. 6:30, Purple Mules.

7 TO 8 A. M.

KFI—7, Off the Record. 7:15, News. 7:30, Musical Newsie. 7:45, Radio On Review.
 KMPC—7, Morning Express. 7:30, Cheerful Rhythms.
 KEHE—7, Musical Clock.
 KHJ—7, Rise and Shine. 7:45, News.
 KFVB—7, Stu Wilson.
 KFVD—7, Spanish program. 7:15, Cover Wagon Jubilee.
 KNX—7, Sunrise Salute. 7:30, News. 7:45, Sunrise Salute.
 KRKD—7, Early Riser. 7:45, News.
 KGFJ—7, News. 7:15, King's Men. 7:30, Sports. 7:45, Rhythm Classics.
 KFOX—7, El Despertador. 7:30, News. 7:40, Hal Kemp's orch.
 KFAC—7, Pastor Reynolds. 7:30, Good Luck to You. 7:45, News.
 KGER—7, News. 7:15, Aubrey Lee.
 KECA—7, Story of Month. 7:15, Josh Higgins. 7:30, Financial. 7:45, News.

8 TO 9 A. M.

KFI—8, On the Job. 8:15, News. 8:30, Optimism of an Optometrist. 8:45, David Harum.
 KNX—8, Morning Melodies. 8:15, Eton Boys. 8:30, Russell Brown. 8:40, Surprise Your Husband. 8:45, Rhapsody in Rhythm.
 KHJ—8, Sons of Pioneers. 8:15, Haven of Rest. 8:45, Bide Dudley Theater.
 KFVB—8, Melodies.
 KECA—8, Church Quarter Hour. 8:15, Virginia Lane. 8:30, Jingle Town Gazette. 8:45, Originalities.
 KEHE—8, News. 8:15, Early Edition. 8:30, Mirrors.
 KMPC—8, Unity Daily Word. 8:15, News. 8:30, Vocal Reveries.
 KFVD—8, Cover Wagon Jubilee. 8:45, Dr. Reynolds.
 KRKD—8:30, State Employment Service.
 KGFJ—8, News. 8:15, Rhythm Memories. 8:30, Hit Revue.
 KFOX—8, Moods Musicale. 8:15, Dr. Clark. 8:30, Musical Newsy. 8:45, Ads.
 KGER—8, News. 8:05, Music. 8:15, Mizpah. 8:45, Vi-Em.

9 TO 10 A. M.

KFI—9, Carters of Elm Street. 9:15, O'Neills. 9:30, Bridge Club.
 KNX—9, Mary Margaret McBride. 9:15, Nancy James. 9:30, Helen Trent. 9:45, Our Gal Sunday.
 KHJ—9, Jean Abbey. 9:15, Home Town. 9:30, Happy Homes. 9:45, Toronto Trio.
 KFVB—9:15, Dr. Reynolds. 9:30, Kitty Keen. 9:45, Musical.
 KECA—9, News. 9:15, Kidoodlers. 9:30, National Farm and Home.
 KEHE—9, Melodies. 9:30, Clifford Clinton. 9:45, Swing Time.
 KMPC—9, Melodies. 9:15, Market With Mable. 9:30, Echos. 9:45, Rhythms in Beauty.
 KFVD—9, Cover Wagon Jubilee. 9:15, News. 9:30, Dr. Richardson.

Lew Won't Lie To Papa



Little George (Lew Lehr) Washington admits he cannot tell a lie to his Papa—Ben Bernie. Seems from the picture that Lew slipped and did his work on a potted palm, instead of the cherry tree, but the spirit of Washington's birthday is the idea the picture is to convey.

KRKD—9:30, U. S. Weather Forecast.
 KGFJ—9, News. 9:15, Reg Cortney Orch. 9:30, Footlight Favorites. 9:45, Kings Jesters.
 KFOX—9, Rhythms. 9:15, Dr. Reynolds. 9:30, Kitty Keene. 9:45, News. 9:55, Best Buys.
 KFAC—9, Meditations. 9:15, Dr. Frank McCoy. 9:30, Three-quarter Time. 9:45, Women in the News.
 KGER—9, News. 9:05, Allimin. 9:15, Gospel Assembly. 9:45, Rev. Adams.
 KFI—10, John's Other Wife. 10:15, Plain Bill. 10:30, Dangerous Roads. 10:45, Dr. Kate.
 KNX—10, Goldbergs. 10:15, Life Can Be Beautiful. 10:30, Road of Life. 10:45, Tena and Tim.
 KHJ—10, Midmorning Matinee. 10:30, Silhouettes in Blue. 10:45, Voice of Experience.
 KFVB—10, News. 10:15, Musical 10:30, Kitty Keene. 10:45, Swap Shop.
 KECA—10, National Farm and Home. 10:15, Agriculture Today. 10:30, Peables Takes Charge. 10:45, Judy and Lanny.
 KEHE—10, Shadows. 10:30, Rev. Anthony Zeoli.
 KMPC—10, Shopping News. 10:30, Dancing Feet.

KFVD—10, Bible School. 10:15, Records. 10:30, Union Rescue Mission.
 KRKD—10, In My Solitude. 10:15, Frontier Riders. 10:45, Paddock Flashes.
 KGFJ—10, News. 10:15, Islanders. 10:30, Moods and Melody.
 KFOX—10, Word to Wives. 10:15, Federal Housing. 10:30, Vic and Sade. 10:45, House of MacGregor.
 KFAC—10, Mid-morning Serenade. 10:30, Harmony Home. 10:45, Gothic Tower.
 KGER—10, News. 10:05, Ann Gilchrist. 10:15, Charlie Cook. 10:30, Travel Talk. 10:45, Organ.
 KMTR—10:30, Turf Tales. 10:45, 29 Palms.

11 TO 12 NOON

KFI—11, Bert and Bob. 11:15, Arnold Grimm's Daughter. 11:30, Valiant Lady. 11:45, Hymns.
 KNX—11, Big Sister. 11:15, Aunt Jentry. 11:30, American School.
 KHJ—11, Nations School. 11:30, Eddie Albright. 11:45, News and Music.
 KEHE—11, Rhythm Romance. 11:15, Reflections.
 KFVB—11, Grady Cantrell. 11:15, Jamboree. 11:30, Journal of Living.
 KECA—11, Adventures in Reading. 11:30, Know Your Child. 11:45, Markets.

KMPC — 11, Know Your Schools. 11:15, Top Tunes. 11:30, Baby Clinic. 11:45, Varieties.
 KFVD—11, News. 11:15, Dr. Stricker. 11:30, Shop With Violet.
 KRKD—11:30, News.
 KGFJ—11, News. 11:15, Dr. Wiseman. 11:30, Lenny Carson.
 KFOX—11, Variety. 11:30, News. 11:40, Music.
 KFAC—11, Man on the Street. 11:30, Home Beautiful. 11:45, Strikes and Spares.
 KGER—11, News. 11:10, Student News. 11:25, Music. 11:30, Cheerful Earful. 11:45, Saddle Tramps.
 KMTR—11, Monitor News. 11:15, Salvation Army. 11:30, Saddle Pals.

12 NOON TO 1 P. M.

KFI—12, Mary Marlin. 12:15, Ma Perkins. 12:30, Pepper Young. 12:45, Guiding Light.
 KNX—12, Fletcher Wiley. 12:30, Harvey Harding, organist. 12:45, Yours Sincerely.
 KHJ—12, News. 12:15, Concert Hall. 12:30, Cats in the Fiddle. 12:45, Good Health Training.
 KFVB—12, Ben Sweetland. 12:15, News. 12:30, Swing Shots. 12:45, Maj. Bateson.
 KECA—12, U. S. Dept. of Agriculture. 12:15, Rochester Civic Orch. 12:45, Between the Book Ends.
 KMPC—12, Studio Concert. 12:15, News. 12:30, Hoosier Hotshots. 12:45, Tuneful Topics.
 KFVD—12, Air Editor. 12:30, Maurice Johnson.
 KRKD—12, Mountaineers. 12:30, Curbstone Quizz.
 KGFJ—12, News. 12:15, This-That.
 KFOX—12, Island Music. 12:30, Man on the Street. 12:45, Major Bateson.
 KFAC—12, News. 12:15, Modern Melodies. 12:30, Organ. 12:45, City College.
 KGER—12, News. 12:10, Motor Vehicle Talks. 12:15, Charlie Cook. 12:30, Mrs. Essie Lacey.

1 TO 2 P. M.

KFI—1, Backstage Wife. 1:15, Stella Dallas. 1:30, Vic and Sade. 1:45, Girl Alone.
 KNX—1, Kitty Kelley. 1:15, Myrt and Marg. 1:30, Hilltop House. 1:45, Stepmother.
 KHJ—1, F.H.A. 1:15, Midstream. 1:30, Wayne and Dick. 1:45, Book A Week.
 KFVB—1, G. Allison. 1:30, Waltz Time. 1:45, O'Neills.
 KECA—1, Club Matinee. 1:30, School News. 1:45, First American.
 KEHE—1, Memories. 1:15, Parade. 1:45, Eddie Brackett.
 KMPC—1, Fall Parade. 1:30, Studio Concert. 1:45, Varieties.
 KFVD—1, News. 1:15, Favorites. 1:30, Poets Club. 1:45, Romantic Rhythm.
 KRKD—1:15, City Hall. 1:50, News.
 KGFJ—1, News. 1:15, String Orch. 1:30, Frank Tromba.
 KFOX—1, Music. 1:15, Rhythmic Age. 1:30, Church Songs. 1:45, O'Neills.
 KFAC—1, Religious Science. 1:15, Georgiana Franz. 1:30, Board of Education.
 KGER—1, News. 1:05, Cirgonian Club. 1:30, Spanish Trio.
 KMTR—1, Geo. Higley.

2 TO 3 P. M.

KFI—2, Houseboat Hanna. 2:15, True Stories. 2:30, Young Dr. Malone. 2:45, Lillian K. Cornell.
 KNX—2, Scattergood Baines. 2:15, Life and Love of Dr. Susan. 2:30, Woman's Forum. 2:45, Kitty Keene.
 KECA—2, Classic Hour.

MONDAY

Feb. 20, 1939

HOUR-BY-HOUR DAILY LOG

KHJ—2, Edna O'Dell. 2:15, Let's Play Bridge. 2:30, TBA. 2:45, Radio Campus.
 KFVB—2, Dr. Reynolds. 2:15, Guiding Light. 2:30, Sound Track.
 KEHE—2, Listen Ladies. 2:30, Tunes and Tempos. 2:45, Originalities.
 KMPC—2, Swing Organ. 2:30, Frank Gallagher.
 KFVD—2, Hawaiians. 2:15, Or-Organ. 2:30, Vocals. 2:45, Music Moods.
 KRKD—2:15, Chuck Henry Orch.
 KGFJ—2, News. 2:15, Civic. 2:30, Rosario Bordon Concert.
 KMTR—2:15, See'n' Things. 2:45, Stock Reports.
 KFOX—2, Christian Science. 2:15, Guiding Light. 2:30, Foster Rucker.
 KFAC—2, American Legion Auxiliary. 2:15, Famous Voices. 2:30, Women's Clubs.
 KGER—2, News. 2:05, George Strange. 2:15, Charlie Cook. 2:30, Music.

3 TO 4 P. M.

KFI—3, Agnes White. 3:15, I Love Mystery. 3:30, Woman's Magazine. 3:45, Ann Warner.
 KNX—3, Ma Perkins. 3:15, Julia Blake. 3:30, Bob Trout. 3:45, Best Buys. 3:50, KNXtra.
 KHJ—3, Feminine Fancies. 3:30 Maritime Music.
 KFVB—3, Clover Kerr. 3:15, Mary Marlin. 3:30, Take It Easy.
 KECA—3, Science. 3:15, Patricia Gilmore. 3:25, News. 3:30, Ray Perkins. 3:45, Del Courtney's Orch.
 KEHE—3, News. 3:15, Cocktails. 3:30, Aimee-Bella-Vie. 3:45, Dansante.
 KMPC—3, Siesta Time. 3:30, Aunt Sue. 3:45, Tea Time Tunes.
 KFVD—3, News. 3:15, Memories. 3:30, Hot Wax. 3:45, Novelty Notes.
 KRKD—3:30, U. S. C. program.
 KGFJ—3, News. 3:15, Chester Gay. 3:30, Texas Outlaws.
 KFOX—3, At the Theater. 3:15, Mary Marlin. 3:30, Crimson Trail. 3:45, News.
 KFAC—3, Musical Masterpieces.
 KGER—3, News. 3:10, Music 3:45, Happy Mammy.
 KMTR—3:30, Piano.

4 TO 5 P. M.

KFI—4, Durward Howes. 4:15, Paul Carson, organ. 4:30, Art Baker's Notebook. 4:45, News.
 KHJ—4, Fulton Lewis, Jr. 4:15, Reserve. 4:30, Clipper.

"Johnny Presents"



Marian McManus Featured on The Philip Morris Air Show

KNX—4, Fletcher Wiley. 4:30, Yeo at the Organ. 4:45, Tea for Two.
 KFVB—4, Ma Perkins. 4:15, Pepper Young. 4:30, Music.
 KECA—4, Pageants of History. 4:15, Chanarral Club. 4:30, Song Pictures. 4:45, March of Science.
 KEHE—4, Dansant. 4:15, Songs of Stars. 4:30, Jack Stanley Orch.
 KMPC—Rev. Don Milligan. 4:30, Twilight Melodies. 4:45, News.
 KFVD—4, Tea Time. 4:15, Band Concert. 4:30, For You.
 KRKD—4, South Sea Boys. 4:15, News.
 KGFJ—4, News. 4:15, Arthur Schurt. 4:30, Swing Carnival.
 KMTR—4, Adult Evening College.
 KFOX—4, Ma Perkins. 4:15, Pepper Young. 4:30, Dance Rhythms.
 KFAC—4, Santa Monica J. C. 4:30, Vernon Steele. 4:45, Farm Time.
 KGER—4, News. 4:10, Music. 4:15, Village Voice. 4:30, Monitor News. 4:45, School Kids.

5 TO 6 P. M.

KFI—5, Carson Robison's Buckaroos. 5:30, Those We Love.
 KNX—5, News. 5:15, Howie Wing. 5:30, Headlines on Parade. 5:45, Teachers Pets.
 KHJ—5, News. 5:15, Johnny Murray. 5:30, Dick Tracy. 5:45, Orphan Annie.
 KFVB—5, Fairy Tales. 5:15, Uncle John. 5:30, Music in the Air. 5:45, Bert Fiske, Piano.
 KECA—5, Tune Type. 5:15, News. 5:30, Sports. 5:45, Musical Vignettes.
 KEHE—5, Stuart Hamblen's Gang.
 KRKD—5, Land of Enchantment. 5:30, Race Results. 5:45, Beverly Hillbillies.
 KGFJ—News. 5:15, Tango Time. 5:30, Freddie Rich Orch. 5:45, Sunset Swing.
 KFOX—5, Larry Clinton's Orch. 5:15, Benny Goodman's Orch. 5:30, Tommy Dorsey's Orch. 5:40, Beauty Talk. 5:45, Bunny Berigan's Orch.
 KFAC—5, Christian Science. 5:15, Tea Time Melodies. 5:30, Whoa Bill Club.
 KGER—5, News. 5:05, Lico Estrada.

6 TO 7 P. M.

KFI—6, Hour of Charm. 6:30, Eddy Duchin.
 KNX—6, Lux Radio Theater.
 KHJ—6, Jack Armstrong. 6:15, Shafter Parker. 6:30, Dorothy Gordon. 6:45, Johnson Family.
 KFVB—6, News. 6:15, Gaylord Carter. 6:30, Song Shoppers. 6:45, William Farnum.
 KEHE—6, News. 6:15, Blue Room. 6:30, Sports. 6:45, Dinner Dance.
 KECA—6, Budd Show. 6:30, Westminster College Choir.
 KRKD—6, Beverly Hillbillies. 6:15, Financial. 6:45, Aloha Serenaders.
 KGFJ—6, News. 6:15, Serenaders. 6:30, Norman Hartford Sports. 6:45, Clyde Lucas Orchestra.
 KFOX—6, News. 6:10, Chick MacGregor. 6:20, Rolly and Lloyd. 6:30, Popular Tunes. 6:45, Serenaders.
 KFAC—6, News. 6:15, Sports Flashes.
 KGER—6, News. 6:15, Robert Noble. 6:30, Italian News.
 KMTR—6, Saddle Pals. 6:30, Calif. Pension.

7 TO 8 P. M.

KFI—7, Carnation Contented Program. 7:30, Al Pearce Gang.
 KNX—7, Guy Lombardo's Orch. 7:30, Cantor's Camel Caravan.

KHJ—7, News Dramas. 7:15, Fu Man Chu. 7:30, Lone Ranger.
 KFVB—7, Universe of Melody. 7:30, Joe Hernandez. 7:45, Invitation to Romance.
 KECA—7, True or False. 7:30, National Forum.
 KEHE—7, Clifford Clinton. 7:15, Strollin' Sam. 7:30, News. 7:45, Dark Room.
 KRKD—7, News.
 KFSG—7:45, Convention Service.
 KGFJ—7, Spanish Hour.
 KFOX—7, Concert. 7:15, Strollin' Tom. 7:30, Swing Ding.
 KFAC—7, Jimmie Allen. 7:30, Mrs. G. W. Ballard.
 KGER—7, News. 7:05, Jewish Hour.
 KMTR—7, Corrier Dell Aria.

8 TO 9 P. M.

KFI—8, Amos 'n' Andy. 8:15, Edwin C. Hill. 8:30, Voice of Firestone.
 KNX—8, Sam Hayes News. 8:15, Lum & Abner. 8:30, Pick & Pat.
 KHJ—8, Frost Warnings. 8:05, Pageant of Melody. 8:15, Jimmy Dorsay. 8:55, Today's Top Tune.
 KFVB—8, Stars Over Manhattan. 8:30, Radio Players.
 KECA—8:15, Orch. 8:30, Stanford University. 8:45, Law in Every Day Life.
 KEHE—8, Studio Dark Room. 8:15, Midnight Mission. 8:30, Little Counsellor. 8:45, Melodies.
 KFSG—8, Convention Service.
 KGFJ—8, News. 8:15, Negro News. 8:30, Auto Auction. 8:45, Italian Music.
 KMTR—8, Insurance Folly. 8:15, T. W. Hughes. 8:30, Globe Trotters Club.
 KFOX—8, Hawaiians. 8:15, Rabbi Grafman. 8:30, Radio Players.
 KFAC—8, Strike Up the Band. 8:30, Hal Berger's Baseball Dramas.
 KGER—8, News. 8:05, Rodolfo Hoyes.

9 TO 10 P. M.

KFI—9, Hawthorne House. 9:30, Battle of Sexes.
 KNX—9, Cavalcade of America. 9:30, Sophie Tucker. 9:45, News.
 KHJ—9, News. 9:15, Frank-Archie. 9:30, Bob Crosby Orch. 9:45, Thomas Conrad Sawyer.
 KFVB—9, Swing. 9:30, News. 9:45, Moonlight Sonata.
 KECA—9, Freddy Martin Orch. 9:30, Know Your Schools. 9:45, Ricardo Rhapsodies.
 KEHE—9, Listen Ladies.
 KMPC—9:30, Dancing Feet. 9:45, News.
 KFSG—9, Convention Service.
 KGFJ—9, News. 9:15, Shoppers Guide. 9:30, Stan Myers Orch.
 KFOX—9, Geo. Redman's Orch. 9:15, Freddie Berren's Orch. 9:30, News. 9:45, Dance Music.
 KFAC—9, Concert Hall. 9:30, Pepperdine College.
 KGER—9, News. 9:05, Interdenom. Church. 9:30, Moods in Melodies. 9:45, Tenth Inning.
 KMTR—9, Floyd Johnson.

10 TO 11 P. M.

KFI—10, News. 10:15, Shep Fields' Orch. 10:30, Carlos Molina's Orch.
 KNX—10, Camera Club. 10:15, Nightcap Yarns. 10:30, Clyde McCoy's Orch.
 KHJ—10, Devil's Scrapbook. 10:30, Jimmie Walsh's Orch.
 KFVB—10, Telephone Quiz. 10:30, Going Forward.
 KECA—10, Phil-Harmonia.
 KEHE—10, Piano. 10:15, Cuban Orch. 10:30, Kingdom of Dreams.
 KMPC—10, A Cappella in Bronze. 10:15, Wax Har-

monies. 10:30, Joe Morengo Orch. 10:45, Cat's Claws.
 KFSG—0, Story of Songs.
 KGFJ—10, News. 10:15, Musical Comedy. 10:30, Dance Music.
 KMTR—10, Conga Orch.
 KFOX—10, Clyde McCoy. 10:30, Bob Hamilton's Orch.
 KFAC—10, Choral Hour. 10:30, Organ.
 KGER—10, News. 10:15, Music. 10:45, Charlie Cook.

11 TO 12 MIDNIGHT

KFI—11, Paul Martin's Orch. 11:30, Silhouettes.
 KNX—11, Novelty Swing. 11:30, Archie Bleyer's Orch.
 KHJ—11, Shep Fields' Orch. 11:15, Carvel Craig's Orch. 11:30, Skinnay Ennis Orch.
 KFVB—11, Going Forward. 11:30, Symphony Hall.
 KECA—11, Wax Works.
 KEHE—11, Clifford Clinton. 11:15, News. 11:30, Cuban Orch.
 KMPC—11, Dancing Feet. 11:15, Nocturne Swing. 11:30, Sweet and Low. 11:45, Let's Dance.
 KFVD—11, Fun House.
 KFSG—11, Temple Portrait Players. 11:30, Prelude to Slumber.
 KGFJ—11, News. 11:15, Seger Ellis Orch. 11:30, Rhythm.
 KFOX—11, Request Hour.
 KGER—11, News. 11:05, Music. 11:55, News.
 KMTR—11, Melody Lane.

12 MIDNIGHT

KMPC—12, Swing Club.
 KHJ—12, Rhapsody in Wax.
 KFVD—12, Fun House to 4.
 KNX—12, News. 12:15, Dance-time.
 KRKD—12, Musicland Revue
 KGFJ—12, Nite Owl to 6 a.m.
 KFAC—12, Mel Lemon to 6.
 KGER—12, Hospitality Hour.

"Elda Furry"



Born Elda Furry, but now famous as Hedda Hopper. Her career started from a little Quaker town, leading to the stage, then to Hollywood and film fame, and now to stardom in KECA-NBC's Brent-house radio offering. She is the widow of DeWolf Hopper, and is aiding her son, William Hopper, in his first strides toward a picture career.

TUESDAY

Feb. 21, 1939

HOUR-BY-HOUR DAILY LOG

7 TO 8 A. M.

KFI—7, Off the Record. 7:15, News. 7:30, Musical Newsy. 7:45, Radio on Review.
 KNX—7, Sunrise Salute. 7:30, News. 7:45, Sunrise Salute.
 KHJ—7, Rise and Shine. 7:45, News.
 KFVB—7, Stu Wilson.
 KECA—7, Story of Month. 7:15, Josh Higgins. 7:30, Financial. 7:45, News.
 KEHE—7, Musical Clock.
 KFVD—7, Spanish Program. 7:15, Covered Wagon Jubilee.
 KRKD—7, Early Riser. 7:45, News.
 KGFJ—7, News. 7:15, Mixed Choir. 7:30, Sports. 7:45, Rhythm Classics.
 KFOX—7, El Despertador. 7:30, News. 7:40, Music. 7:45, Rev. Van Delinder.
 KFAC—7, Pastor Reynolds. 7:30, Good Luck to You. 7:45, News.
 KGER—7, News. 7:05, Aubrey Lee.
 KMPC—7, Morning Express. 7:30, Cheerful Rhythms.

8 TO 9 A. M.

KFI—8, Ted White. 8:15, News. 8:30, Reserve. 8:45, David Harum.
 KNX—8, My Turn Now. 8:15, Rhythmairs. 8:30, Westerners. 8:45, March Parade.
 KHJ—8, Sons of Pioneers. 8:15, Haven of Rest. 8:45, Mirandy.
 KFVB—8, Melodies. 8:45, Day Dreams.
 KECA—8, Church Quarter Hour. 8:15, Virginia Lane. 8:30, Paul Page. 8:45, Originalities.
 KEHE—8, News. 8:15, Early Edition. 8:30, Musical Mirrors.
 KFVD—8, Covered Wagon Jubilee. 8:45, Dr. Reynolds.
 KRKD—8:30, Jonathan Breakfast Club.
 KGFJ—8, News. 8:15, Rhythm Memories. 8:30, Hit Revue.
 KFOX—8, Moods Musicale. 8:15, Dr. Clark. 8:30, Hit Tunes. 8:45, Ads.
 KFAC—8, Country Church of Hollywood. 8:30, Mirandy. 8:45, Mildred Lager.
 KGER—8, News. 8:05, Music. 8:15, Mizpah Hour. 8:45, Charlie Cook.
 KMPC—8, Unity Daily Word. 8:15, News. 8:30, Vocal Reverses.
 KMTR—8:45, Race Comment.

9 TO 10 A. M.

KFI—Carters of Elm Street. 9:15, O'Neills. 9:30, Bridge Club.
 KNX—9, Better Business Bureau. 9:15, Nancy James. 9:30, Helen Trent. 9:45, Our Gal Sunday.
 KHJ—9, Carolyn Price. 9:15, Home Town. 9:30, Happy Homes. 9:45, String Ensemble.
 KFVB—9, Jamboree. 9:15, Dr. Reynolds. 9:30, Kitty Keene. 9:45, Morning Musical.
 KECA—9, News. 9:15, Bailey Axton. 9:30, National Farm-Home.
 KEHE—9, Melodies. 9:15, Dr. Reynolds. 9:30, Clifford Clinton. 9:45, Swing Time.
 KFVD—9, Covered Wagon Jubilee. 9:15, News. 9:30, Dr. Richardson.
 KRKD—9, Jonathan Breakfast Club. 9:30, Weather Forecast.
 KGFJ—9, News. 9:15, Ross Haywood. 9:30, Footlite Favorites. 9:45, Dyana Gale, Dixie Songsters.
 KFOX—9, Rhythms. 9:15, Dr. Reynolds. 9:30, Kitty Keene. 9:45, News. 9:55, Best Buys.
 KFAC—9, Meditations. 9:15, Dr. Frank McCoy. 9:30, Marion Manners. 9:45, Women in the News.
 KGER—9, News. 9:05, Allimin. 9:15, Gospel Assembly. 9:45, Rev. Adams.

KMPC—9, Melodies. 9:30, Echoes. 9:45, Rhythms in Beauty.
 KMTR—9, Martin Thomas.

10 TO 11 A. M.

KFI—10, John's Other Wife. 10:15, Plain Bill. 10:30, Dangerous Roads. 10:45, Dr. Kate.
 KNX—10, Goldberg's. 10:15, Life Can Be Beautiful. 10:30, Road to Life. 10:45, Mary Lee Taylor.
 KHJ—10, Mid-Morning Matinee. 10:30, Don Arres, baritone. 10:45, Swingsters.
 KFVB—10, News. 10:15, Musical. 10:30, Vic and Sade. 10:45, Jamboree.
 KECA—10, National Farm and Home. 10:15, Agriculture Today. 10:30, Peables Takes Charge. 10:45, Vera Scott.
 KEHE—10, Eddie Brackett. 10:30, Rev. Anthony Zeoli.
 KFVD—10:30, Union Rescue Mission.
 KRKD—10, In My Solitude. 10:15, Sons of the Prairie. 10:45, Paddock Flashes.
 KGFJ—10, News. 10:15, Sol Hopli Orch. 10:30, Moods in Melody.
 KFOX—10, Word to Wives. 10:15, String Time. 10:30, Vic and Sade. 10:45, House of MacGregor.
 KFAC—10, Mid-morning Serenade. 10:45, Gothic Tower.
 KGER—10, News. 10:05, Ann Gilchrist. 10:15, Charlie Cook. 10:30, Almanac. 10:45, Music.
 KMPC—10, Shopping News. 10:30, Dancing Feet.
 KMTR—10, Anthony Zeoli. 10:30, Turf Tales.

11 A. M. TO 12 NOON

KFI—11, Betty and Bob. 11:15, Arnold Grimm's Daughter. 11:30, Valiant Lady. 11:45, Hymns.
 KNX—11, Big Sister. 11:15, Aunt Jennie's Real Life Stories. 11:30, School of the Air.
 KHJ—11, Nation's School. 11:30, Eddie Albright. 11:45, Hollywood Whispers.
 KFVB—11, Grady Cantrell. 11:15, Jamboree. 11:30, Journal of Living.
 KECA—11, Science Everywhere. 11:30, Little Varieties. 11:45, Markets.
 KEHE—11, Rhythm Romance. 11:15, Reflections.
 KFVD—11, News. 11:15, Dr. Stricker. 11:30, Shop With Wiseman. 11:30, Frank Trom-Violet.
 KRKD—11, P.-T. A. Program. 11:30, News.
 KGFJ—11, News. 11:15, Dr. bar Orch.
 KFOX—11, Variety. 11:30, News. 11:40, Music.
 KFAC—11, Man on the Street. 11:30, Rhythm Styles. 11:45, Strikes and Sparaes.
 KGER—11, News. 11:10, Student News. 11:25, Music. 11:30, Cheerful Earful. 11:45, Step Ladder.
 KMPC—11, Dr. Louis Talbot. 11:30, Varieties.
 KMTR—11, Monitor News. 11:15, Mission Rosary. 11:30, Saddle Pals.

12 NOON TO 1 P. M.

KFI—12, Mary Marlin. 12:15, Ma Perkins. 12:30, Pepper Young. 12:45, Guiding Light.
 KNX—12, Fletcher Wiley. 12:30, Harvey Harding, organist. 12:45, Olson Oddities.
 KHJ—12, News. 12:15, Three-Quarter Time. 12:30, Cats in the Fiddle. 12:45, Good Health and Training.
 KFVB—12, Ben Sweetland. 12:15, News. 12:30, Swing Shots. 12:45, Luncheon Concert.
 KECA—12, U. S. Dept. of Agriculture. 12:15, Army Band. 12:45, Between the Bookends.
 KFVD—12, Air Editor. 12:30, Maurice Johnson.

KEHE—12, News. 12:15, Dr. Frank McCoy. 12:30, Clifford Clinton. 12:45, Melodies.
 KRKD—12, Mountaineers. 12:30, Curbstone Quiz.
 KGFJ—12, News. 12:15, This-That.
 KFOX—12, Cowboy Music. 12:15, Stories of Life. 12:30, Man on the Street. 12:45, Island Music.
 KFAC—12, News. 12:15, Modern Melodies. 12:30, Organ. 12:45, L. A. City College.
 KGER—12, News. 12:10, Water-front Reporter. 12:20, Music. 12:35, Mrs. Essie Locey.
 KMPC—12, Margo Lowell. 12:15, News. 12:30, Hoosier Hotshots. 12:45, Tuneful Topics.

1 TO 2 P. M.

KFI—1, Backstage Wife. 1:15, Stella Dallas. 1:30, Vic and Sade. 1:45, Girl Alone.
 KNX—1, Kitty Kelly. 1:15, Myrt and Marge. 1:30, Hill-top House. 1:45, Stepmother.
 KHJ—1, Better Business Bureau. 1:15, Midstream. 1:30, Two Keyboards. 1:45, Book-a-Week.
 KFVB—1, G. Allison. 1:30, H. M. Robertson. 1:45, O'Neills.
 KECA—1, Club Matinee. 1:30, School News. 1:45, Classic Hour.
 KEHE—1, Memories. 1:15, Parade. 1:45, Eddie Brackett.
 KFVD—1, News. 1:15, Favorites. 1:30, Poet's Club. 1:45, Rhythm.
 KRKD—1:15, City Hall. 1:50, News.
 KGFJ—1, News. 1:15, Singing Strings. 1:30, Stan Meyers Orch.
 KFOX—1, Stars Over Hollywood. 1:15, Harmony Hall. 1:30, Church Songs. 1:45, O'Neills.
 KFAC—1, Religious Science. 1:15, Sheriff's Office. 1:30, Board of Education.
 KGER—1, News. 1:05, Officials on Parade. 1:20, Bits of Hits. 1:30, Spanish Trio.
 KMPC—1, Fall Parade. 1:30, Studio Concert. 1:45, Varieties.
 KMTR—1:30, Geo. Higley.

2 TO 3 P. M.

KFI—2, Houseboat Hannah. 2:15, True Stories. 2:30, Young Dr. Malone. 2:45, Edward Davies.
 KNX—2, Scattergood Baines. 2:15, Life and Love of Dr. Susan. 2:30, Woman's Forum. 2:45, Kitty Keene.
 KHJ—2, Around the World. 2:15, Let's Play Bridge. 2:30, La Forge Musical. 2:45, Jane Anderson, piano.
 KFVB—2, Dr. Reynolds. 2:15, Guiding Light. 2:30, Sound Track.
 KECA—2, Classic Hour.
 KEHE—2, Listen, Ladies. 2:30, Tunes and Tempos. 2:45, Originalities.
 KFVD—2, Hawaiians. 2:15, Organ. 2:30, Vocals. 2:45, Music Moods.
 KRKD—2:15, Chuck Henry Orch.
 KGFJ—2, News. 2:15, Civic. 2:30, Concert Gems.
 KFOX—2, Christian Science. 2:15, Guiding Light. 2:30, Foster Rucker.
 KFAC—2, Good Cheer. 2:15, FHA Talk. 2:30, Strike Up the Band.
 KGER—2, News. 2:05, George Strange. 2:15, Charlie Cook. 2:30, Long Beach Band.
 KMPC—2, Swing Organ. 2:30, Salute to Hollywood.
 KMTR—2, Race Results. 2:45, Stock Reports.

3 TO 4 P. M.

KFI—3, Benno Rabinoff. 3:15, I Love Mystery. 3:30, Woman's Magazine. 3:45, Ann Warner.

KNX—3, Ma Perkins. 3:15, Stafford Sisters. 3:30, Today, Bob Trout. 3:45, Best Buys. 3:50, KNXtra.
 KHJ—3, Feminine Fancies. 3:30, Airliners. 3:45, Elinor Sherry, organ.
 KFVB—3, Clover Kerr. 3:15, Mary Marlin. 3:30, Matinee Melodies.
 KECA—3, Cornellian's Orch. 3:25, News. 3:30, Our Calif. Schools. 3:45, Ralph Blaine.
 KEHE—3, News. 3:15, Musical Cocktails. 3:30, Jack Stanley's Orch.
 KFVD—3, News. 3:15, Memorials. 3:30, Hot Wax. 3:45, Novelty Notes.
 KRKD—3:30, U. S. C. Program.
 KGFJ—3, News. 3:15, Margit Hegidus. 3:30, Texas Out-laws.
 KFOX—3, At the Theater. 3:15, Mary Marlin. 3:30, Talking Drums. 3:45, News.
 KFAC—3, Musical Masterpieces.
 KGER—3, News. 3:05, Soloist. 3:20, Long Beach Band.
 KMPC—3, Siesta Time. 3:30, Microphone Hi-Lites. 3:45, Tea Tunes.
 KMTR—3, Race Results. 3:30, Piano. 3:45, Race Results.

4 TO 5 P. M.

KFI—4, Easy Aces. 4:15, Mr. Keen. 4:30, Art Baker's Notebook. 4:45, News.
 KNX—4, Fletcher Wiley. 4:30, Helen Mencken Drama.
 KHJ—4, Fulton Lewis. 4:15, Carvel Craig's Orch. 4:30, Clipper.
 KFVB—4, Ma Perkins. 4:15, Pepper Young. 4:30, Take It Easy.
 KECA—4, Bob Keith's Orch. 4:15, Howard Milholland. 4:30, Oscar Shumsky. 4:45, Vivian Della Chiesa.
 KEHE—4, Moments Musicale. 4:15, Songs of Stars. 4:30, Jack Stanley Orch.
 KMPC—4, Rev. Don Milligan. 4:30, Melodies. 4:45, News.
 KFVD—4, Tea Time. 4:15, Lady Make Believe. 4:30, For You.
 KRKD—4, South Sea Boys. 4:15, News. 4:30, Venna Taylor.
 KGFJ—4, News. 4:15, Tea Time. 4:30, Swing Carnival.
 KFOX—4, Ma Perkins. 4:15, Pepper Young. 4:30, Dance Rhythms.
 KFAC—4, City College. 4:15, Musical Comedy Favorites. 4:30, Moods in Music.
 KGER—4, News. 4:10, Music. 4:15, Village Voice. 4:30, Monitor News. 4:45, School Kids.

5 TO 6 P. M.

KFI—5, Charles Dillon. 5:15, Virginia Flohri. 5:30, Information, Please.
 KNX—5, Brown and Yeo. 5:15, Howie Wing. 5:30, Let's Talk Music. 5:45, News. 5:55, Oddities.
 KHJ—5, News. 5:15, Johnny Murray. 5:30, Dick Tracy. 5:45, Little Orphan Annie.
 KFVB—5, Take It Easy. 5:15, Uncle John. 5:30, Music in Air.
 KECA—5, Gilbert & Sullivan Music. 5:45, Reserve.
 KEHE—5, Stuart Hamblen's Gang.
 KRKD—5, Drama Behind Headlines. 5:30, Race Results. 5:45, Beverly Hillbillies.
 KGFJ—5, News. 5:15, Xavier Gugarth Orch. 5:30, King's Jesters.
 KFOX—5, Larry Clinton's Orch. 5:15, Benny Goodman's Orch. 5:30, Tommy Dorsey's Orch. 5:40, Beauty Talk. 5:45, Bunny Berigan's Orch.
 KFAC—5, Christian Science. 5:15, Tea Time Melodies. 5:30, Whoa Bill Club.

TUESDAY

Feb. 21, 1939

HOURLY-BY-HOURLY DAILY LOG

KGER—5, News. 5:05, Lico Estrada.
6 TO 7 P. M.
 KFI—6, Pull Over, Neighbor. 6:30, Fibber McGee.
 KNX—6, We the People. 6:30, Camel Caravan. Benny Goodman.
 KHJ—6, Jack Armstrong. 6:15, Gen. Shafter Parker. 6:30, Ed Fitzgerald Review. 6:45, Johnson Family.
 KFVB—6, News. 6:15, Gavlord Carter. 6:30, Song Shopper. 6:45, William Farnum.
 KECA—6, What's the Big Idea? 6:30, Eugene Conley.
 KEHE—6, News. 6:15, Blue Room. 6:30, Sports. 6:45, Dinner Dance.
 KRKD—6, Beverly Hillbillies. 6:30, Santaella Ensemble. 6:45, Aloha Serenaders.
 KGFJ—6, News. 6:15, Concert. 6:30, Norman Hartford. Sports. 6:45, Serenaders.
 KPOX—6, News. 6:10, Rolly and Lloyd. 6:30, Dance Rhythms. 6:45, Serenader.
 KRAC—6, News. 6:15, Sports Flashes. 6:30, Supper Dance Diversions. 6:45, June Michael
 KGER—6, News. 6:15, Robert Noble. 6:30, Italian News.
 KMTR—6, Saddle Pals. 6:30, Calif. Pension.
7 TO 8 P. M.
 KFI—7, Bob Hope. 7:30, Uncle Ezra. 7:45, Night Editor.
 KNX—7, Doctor Christian. 7:30, Jimmy Fidler. 7:45, American Viewpoints.
 KHJ—7, Phantom Pilot. 7:15, Inside of Sports. 7:30, Green Hornet.
 KFVB—7, Variations and Syn-copations. 7:30, Santa Anita Races.

KECA—7, If I Had the Chance. 7:30, Sons of the Lone Star.
 KEHE—7, Clifford Clinton. 7:15, Strollin' Tom. 7:30, News. 7:45, Phil Harris Orch.
 KRKD—7, News. 7:30, Do You Know.
 KFSG—7:45, Convention Service.
 KGFJ—7, Spanish Hour.
 KPOX—7, Concert. 7:15, Strollin' Tom. 7:30, Swing Ding.
 KPAC—7, Jimmie Allen. 7:30, Mrs. G. W. Ballard. 7:45, County on Review.
 KGER—7, News. 7:05, Jewish Hour.
 KMTR—7, Corriere Del Aria. 7:30, Mission Music Hall.
8 TO 9 P. M.
 KFI—8, Amos 'n' Andy. 8:15, Vocal Varieties. 8:30, Johnny Presents.
 KNX—8, Red Norvo's Orch. 8:15, Westerner's Quartet. 8:30, Big Town.
 KHJ—8, Frost Warnings, Grif Williams' Orch. 8:15, Don't You Believe It. 8:30, Jimmie Walsh Orch. 8:55, To the Rescue.
 KFVB—8, Morgan Family. 8:30, California Pension.
 KECA—8, Swingin' at the O. 8:15, Nick Harris. 8:30, Joe Hines Orch.
 KEHE—8, Phil Harris Orch. 8:15, Jack Stanley Orch. 8:30, Carol Lofner Orch.
 KFSG—8, Convention Service.
 KGFJ—8, News. 8:15, Negro News. 8:30, Ross Haywood. 8:45, Italian Music.
 KMTR—8:00, Rev. Garcia.
 KPOX—8, Hawaiians. 8:15, Clyde McCoy. 8:30, Literature. 8:45, String Time.

KFAC—8, Strike Up Band. 8:30, Hal Berger.
 KGER—8, News. 8:05, Rodolfo Hoyos.
9 TO 10 P. M.
 KFI—9, Reserve. 9:30, Carefree Carnival.
 KNX—9, Al Jolson. 9:30, Grouch Club.
 KHJ—9, News. 9:15, Frank Archie. 9:30, Mysteries of Life. 9:45, Cantando Club.
 KFVB—9, Maurice Zam. 9:15, News. 9:30, Grouch Club.
 KECA—9, Carlos Molina's Orch. 9:30, Radio Logic. 9:45, University Explorer.
 KEHE—9, Clyde McCoy Orch. 9:30, Olympic Boxing.
 KMPC—9, Mary's Melody Makers. 9:45, News.
 KFSG—9, Convention Service. 9:30, Angelus Choir.
 KGFJ—9, News. 9:15, Shopping Guide. 9:30, Lenny Carson.
 KPOX—9, Freddie Berren's Orch. 9:30, World News. 9:45, Popuar Danice Rhythms.
 KFAC—9, Concert Hall. 9:30, Youth Play Night. 9:45, Loyola Thinks.
 KGER—9, News. 9:05, Music. 9:30, Charlie Cook. 9:45, American Legion.
 KMTR—9, Floyd Johnson.
10 TO 11 P. M.
 KFI—10, News. 10:15, Ho Hum. 10:30, Shep Fields' Orch.
 KNX—10, News. 10:15, Night-cap Yarns. 10:30, Harry Owens Orch. 10:45, Maxine Sullivan.
 KHJ—10, Phil Harris Orch. 10:30, Chuck Foster's Orch.
 KMPC—10, Mary's Melody Stars Drama. 10:30, Joe Morango Orch. 10:45, Wax Harmonies.

KFVB—10, Telephone Quiz. 10:30, Going Forward.
 KECA—10, Phil Harmonia.
 KEHE—10, Olympic Boxing. 10:45, Cuban Orch.
 KFSG—10, Angelus Choir.
 KGFJ—10, News. 10:15, Musical Comedy. 10:30, Dance Music.
 KFOX—10, Bob Hamilton's Orch. 10:30, Hit Revue.
 KFAC—10:30, Organ.
 KGER—10, News. 10:15, Gay 90's Revue. 10:45, Rhythm.
11 TO 12 MIDNIGHT
 KFI—11, Buddy Rogers Orch. 11:30, Herbie Kay Orch.
 KNX—11, Clyde McCoy's Orch. 11:30, Archie Blyer's Orch.
 KHJ—11, Jack McLean's Orch. 11:30, Playboys.
 11:45, Phil Harris Orch.
 KFVB—11, Going Forward. 11:30, Symphony Hall.
 KECA—11, Musical Encore.
 KEHE—11, Clifford Clinton. 11:15, News. 11:30, Andy Iona Orch.
 KMPC—11, Dancing Feet. 11:15, Nocturne Swing. 11:30, Sweet and Low. 11:45, Let's Dance.
 KFVD—11, Fun House.
 KFBS—11, Angelus Choir. 11:15, Hawaiian Trio.
 KGFJ—11, News. 11:15, Clyde McCoy Orch. 11:30, Rhythm.
 KFOA—11, Geo. Redman's Orch. 11:30, News. 11:45, Organ.
 KFAC—11, Night Concert.
12 MIDNIGHT
 KMPC—12, Swing Club.
 KHJ—12, Rhapsody in Wax
 KFVD—12, Fun House to 4.
 KNX—12, News. 12:15, Dance-time.
 KRKD—12, Musicland Revue to 6.
 KGFJ—12, Nite Owl to 6.
 KFAC—12, Mel LeMon to 6.

NEW THRILLS FROM THE FAMILY OVEN!

New notions about the joys of home baking are inspired through the use of Ace-Hi Family Flour. Do you realize that here is ONE flour blended and milled to answer ANY demand by the most exacting home baker? . . . Ace-Hi is dependable to the point where it is absolutely guaranteed up and down the line from Bread to Biscuits to Pastry!



Send for this notable Recipe Book "Personally Proven Recipes" is an authoritative book—in full color. It will give you entirely new notions about home-baking. Mailed free on request to

CALIFORNIA MILLING CORPORATION
 55th & Alameda, Los Angeles

WEDNESDAY

Feb. 22, 1939

HOUR-BY-HOUR DAILY LOG

6 TO 7 A. M.

KMPC—6:45, Cheerful Rhythms.
KEHE—6, Musical Clock.
KHJ—6, Musical Clock.
KFVB—6, Stu Wilson.
KFVD—6, Spanish Program.
KNX—6, Sunrise Salute.
KRKD—6, Early Riser. 6:15, Rev. Johnston. 6:30, News. 6:45, Early Riser.
KGFJ—6, Concert.
KFOX—6, El Despertador.
KFAC—6, Old Time Religion. Inst. 6:45, Melodic Gems.
KGER—6, News. 6:05, Farm News. 6:25, Music. 6:30, Purple Mules.

7 TO 8 A. M.

KFI—7, Off the Record. 7:15, News. 7:30, Musical Newsy. 7:45, Radio on Review.
KMPC—7, Morning Express. 7:30, Cheerful Rhythms.
KEHE—7, Musical Clock.
KHJ—7, Rise and Shine. 7:45, News.
KFVB—7, Stu Wilson.
KFVD—7, Spanish Program. 7:15, Covered Wagon Jubilee.
KNX—7, Sunrise Salute. 7:30, News. 7:45, Sunrise Salute.
KRKD—7, Early Riser. 7:45, News.
KGFJ—7, News. 7:15, Cossack Choir. 7:30, Sports. 7:45, Rhythm Classics.
KFOX—7, El Despertador. 7:30, News. 7:40, Music. 7:45, Rev. Van Delinder.
KFAC—7, Pastor Reynolds. 7:30, Good Luck to You. 7:45, News.
KGER—7, News. 7:15, Aubrey Lee.
KECA—7, Story of Month. 7:15, Josh Higgins. 7:30, Financial. 7:45, News.

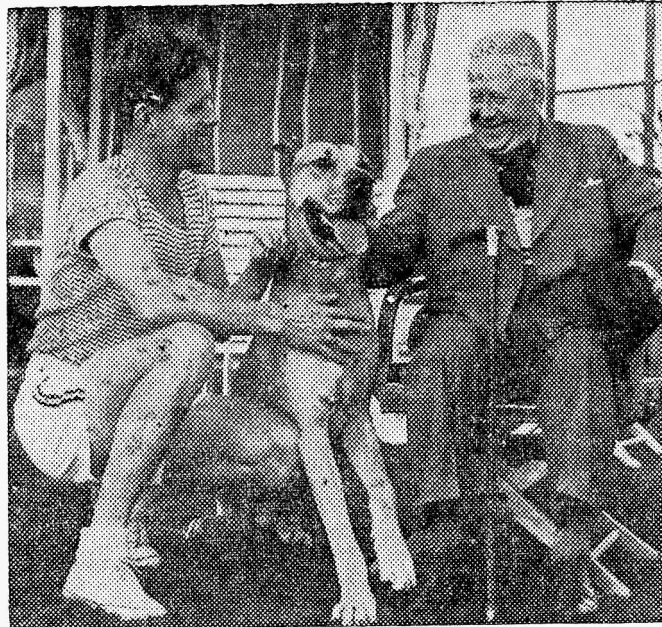
8 TO 9 A. M.

KFI—8, Ted White. 8:15, News. 8:30, Optimism of an Optometrist. 8:45, David Harum.
KNX—8, Morning Melodies. 8:30, Brown and Berman. 8:40, Surprise Your Husband. 8:45, Rhapsody in Rhythm.
KHJ—8, Sons of Pioneers. 8:15, Haven of Rest. 8:45, Mirandy.
KFVB—8, L. A. Breakfast Club.
KECA—8, Church Quarter-Hour. 8:15, Virginia Lane. 8:30, Jingle Town Gazette. 8:45, Originalities.
KEHE—8, News. 8:15, Early Edition. 8:30, Mirrors. 8:15, News. 8:30, Vocal Reveries. 8:45, Modern Tunes.
KFVD—8, Covered Wagon Jubilee. 8:45, Dr. Reynolds.
KRKD—8:30, State Employment Service.
KGFJ—8, News. 8:15, Memories. 8:30, Hit Review.
KFOX—8, Moods Musical. 8:15, Dr. Clark. 8:30, Hit Tunes. 8:45, Ads.
KFAC—8, Country Church of Hollywood. 8:30, Mirandy. 8:45, Mildred Lager.
KGER—8, News. 8:05, Music. 8:15, Mizpah Hour. 8:45, Vi and Em.
KMTR—8:45, Race Comment.

9 TO 10 A. M.

KFI—9, Carters of Elm Street. 9:15, O'Neills. 9:30, Bridge Club.
KNX—9, Mary Margaret McBride. 9:15, Nancy James. 9:30, Helen Trent. 9:45, Our Gal Sunday.
KHJ—9, Balladier. 9:15, Home Town. 9:30, Happy Homes. 9:45, Bernie Cummin's Orch.
KFVB—9, L. A. Breakfast Club. 9:30, Kitty Keene. 9:45, Musicale.
KECA—9, News. 9:15, Kidoodlers. 9:30, National Farm and Home.
KMPC—9, Melodies. 9:15, Market With Mabel. 9:30, Morning Echoes. 9:45, Rhythms in Beauty.

"BATTLING" VALLEE AND DAD



Rudy Vallee again has found himself facing trouble through his asserted beating of a bus boy in a Florida hotel. The bus boy filed charges against the maestro last week, after what Walter Winchell, on his Sunday night broadcast, termed a mistake. Rudy is shown here with his father, Charles Vallee, posed with their favorite Great Dane dog.

KEHE—9, Melodies. 9:15, Dr. Reynolds. 9:30, Clifford Clinton. 9:45, Swingtime.
KFVD—9, Covered Wagon Jubilee. 9:15, News. 9:30, Dr. Richardson.
KRKD—9:30, U. S. Weather Report.
KGFJ—9, News. 9:15, Clyde Lucas Orch. 9:30, Footlite Favorites. 9:45, Gene Austin.
KFOX—9, Rhythms. 9:15, Dr. Reynolds. 9:30, Kitty Keene. 9:45, News. 9:55, Best Buys.
KFAC—9, Meditations. 9:15, Frank McCoy. 9:30, Three-Quarter Time. 9:45, Women in the News.
KGER—9, News. 9:05, Allimin. 9:15, Full Gospel Assembly. 9:45, Church for Blind.
KMTR—9, Martin Thomas.

10 TO 11 A. M.

KFI—10, John's Other Wife. 10:15, Plain Bill. 10:30, Dangerous Roads. 10:45, Dr. Kate.
KNX—10, Goldbergs. 10:15, Life Can Be Beautiful. 10:30, Road of Life. 10:45, Tena and Tim.
KHJ—10, Mid-Morning Matinee. 10:30, Our Quartet. 10:45, Voice of Experience.
KFVB—10, News. 10:15, Musicale. 10:30, Vic and Sade. 10:45, Swap Shop.
KECA—10, National Farm and Home. 10:15, Agriculture Today. 10:30, Peables Takes Charge. 10:45, Phil Brito.
KEHE—10, Shadows of the Past. 10:30, Rev. Anthony Zeoli.
KMPC—10, Shopping News. 10:30, Dancing Feet.
KRKD—10, In My Solitude. 10:15, Frontier Riders. 10:45, Paddock Flashes.
KGFJ—10, News. 10:15, Hawaiian Orch. 10:30, Moods in Melody.
KFAC—10, Mid-Morning Serenade. 10:30, Harmony Homes. 10:45, Gothic Tower.

KFVD—10:30, Union Rescue Mission.
KFOX—10, Word to Wives. 10:15, FHA. 10:30, Vic and Sade. 10:45, House of MacGregor.
KGER—10, News. 10:05, Ann Gilchrist. 10:15, Charlie Cook. 10:30, Almanac. 10:45, Organ.
KMTR—10, Anthony Zeoli. 10:30, Turf Tales. 10:45, 29 Palms.

11 A. M. TO 12 NOON

KFI—11, Betty and Bob. 11:15, Arnold Grimm's Daughter. 11:30, Valiant Lady. 11:45, Betty Crocker.
KNX—11, Big Sister. 11:15, Aunt Jenny. 11:30, American School.
KHJ—11, Nation's School. 11:30, Eddie Albright. 11:45, Muse and Music.
KFVB—11, Grady Cantrell. 11:15, Gertrude Ross. 11:30, Journal of Living.
KECA—11, Your Health. 11:30, Marine Band.
KEHE—11, Rhythm Romance. 11:15, Reflections.
KMPC—11, Dr. Louis Talbot. 11:30, Varieties.
KFVD—11, News. 11:15, Dr. Stricker. 11:30, Shop With Violet.
KRKD—11:30, News.
KGFJ—11, News. 11:15, Dr. Wiseman. 11:30, Ross Haywood.
KFOX—11, Optimism of An Optometrist. 11:15, Variety. 11:30, News. 11:40, Music.
KFAC—11, Man on the Street. 11:30, Home Beautiful. 11:45, Strikes and Spares.
KGER—11, News. 11:10, Student News. 11:25, Music. 11:30, Cheerful Earful. 11:45, Saddle Tramps.
KMTR—11, Monitor News. 11:15, Story Teller. 11:30, Saddle Pals.

12 NOON TO 1 P. M.

KFI—12, Mary Marlin. 12:15, Ma Perkins. 12:30, Pepper Young. 12:45, Guiding Light.
KNX—12, Fletcher Wiley. 12:30, Harvey Harding, organist. 12:45, Yours Sincerely.
KHJ—12, News. 12:15, Bill Lewis, Baritone. 12:30, Cats in the Fiddle. 12:45, Book Shelf.
KFVB—12, Ben Sweetland. 12:15, News. 12:30, Swing Shots. 12:45, Major Bateson.
KECA—12, U. S. Dept. of Agriculture. 12:15, Market Reports. 12:30, Del Courtney's Orch. 12:45, Between the Bookends.
KMPC—12, Studio Concert. 12:15, News. 12:30, Hoosier Hotshots. 12:45, Tuneful Topics.
KEHE—12, News. 12:15, Dr. Frank McCoy. 12:30, Clifford Clinton. 12:45, Melodies.
KFVD—12, Air Editor. 12:30, Maurice Johnson.
KRKD—12, Mountaineers. 12:30, Curstone Quiz.
KGFJ—12, News. 12:15, This-That.
KFOX—12, Hal Kemp's Orch. 12:15, Island Music. 12:30, Man on Street. 12:45, Gardener of the Air.
KFAC—12, News. 12:30, Organ. 12:45, L. A. City College.
KGER—12, News. 12:10, Motor Vehicle Talk. 12:15, Junior Chamber of Commerce. 12:30, Music. 12:35, Mrs. Essie Loyce.

1 TO 2 P. M.

KFI—1, Backstage Wife. 1:15, Stella Dallas. 1:30, Vic and Sade. 1:45, Girl Alone.
KNX—1, Kitty Kelly. 1:15, Myrt and Marge. 1:30, Hilltop House. 1:45, Stepmother.
KHJ—1, Geo. Wash. Birthday Handicap. (Hialeah). 1:15, Midstream. 1:30, P-T. A. 1:45, Book-a-Week.
KFVB—1, G. Allison. 1:30, Waltz. 1:45, O'Neills.
KECA—1, Club Matinee. 1:30, School News. 1:45, My Los Angeles.
KEHE—1, Memories. 1:15, Parade. 1:45, Eddie Brackett.
KMPC—1, Fall Parade. 1:30, Studio Concert. 1:45, Varieties.
KFVD—1, News. 1:15, Favorites. 1:30, Poets' Club. 1:45, Rhythm.
KRKD—1:15, City Hall. 1:50, News.
KGFJ—1, News. 1:15, Harry Horlick Orch. 1:30, Jim Walsh Orch.
KFOX—1, Brevities. 1:15, Rhythmic Age. 1:30, Church Songs. 1:45, O'Neills.
KFAC—1, Religious Science. 1:15, Georgena Franz. 1:30, Board of Education.
KGER—1, News. 1:05, Officials on Parade. 1:20, Bits of Hits. 1:30, Spanish Trio.

2 TO 3 P. M.

KFI—2, Houseboat Hannah. 2:15, True Stories. 2:30, Young Dr. Malone. 2:45, Reserve.
KNX—2, Scattergood Baines. 2:15, Life and Love of Dr. Susan. 2:30, Woman's Forum. 2:45, Kitty Keene.
KHJ—2, Mark Love. 2:15, Lets Play Bridge. 2:30, Box Office.
KFVB—2, Dr. Reynolds. 2:15, Guiding Light. 2:30, Sound Track.
KECA—2, Classic Hour.
KEHE—2, Listen, Ladies. 2:30, Tunes-Remotes. 2:45, Organalities.
KMPC—2, Swing Organ. 2:30, Frank Gallagher.
KFVD—2, Hawaiians. 2:15, Organ. 2:30, Vocals. 2:45, Music Moods.
KFOX—2, Christian Science. 2:15, Guiding Light. 2:30, Foster Rucker.

WEDNESDAY

Feb. 22, 1939

HOUR-BY-HOUR DAILY LOG

KRKD—2:15, Chuck Henry Orch.
 KGFJ—2, News. 2:15, Civic. 2:30, Symphony Hi-Lites.
 KFAC—2:15, Famous Voices. 2:30, Band Concert.
 KGER—2, News. 2:05, Geo. Strange. 2:15, Charlie Cook. 2:30, Long Beach Band.
 KMTR—2, Race Results. 2:45, Stock Reports.
3 TO 4 P. M.
 KFI—3, Agnes White. 3:15, I Love a Mystery. 3:30, Woman's Magazine.
 KNX—3, Ma Perkins. 3:15, Julia Blake. 3:30, Today, Bob Trout. 3:45, Best Buys. 3:50, KNXtra
 KHJ—3, Feminine Fancies. 3:30, Public Health Program.
 KFVB—3, Clover Kerr. 3:15, Mary Marlin. 3:30, Melodies.
 KECA—3, American Schools. 3:15, Rollini's Orch. 3:25, News. 3:30, Lyon and Marlowe. 3:45, Romance Lyrics.
 KEHE—3, News. 3:15, Musical Cocktails. 3:30, Amy, Belle and Vi. 3:45, Federal Housing Talk.
 KMPC—3, Singing Strings. 3:30, Aunt Sue. 3:45, Meet the Author.
 KFVD—3, News. 3:15, Memories. 3:30, Hot Wax. 3:45, Novelty Notes.
 KRKD—3:30, U. S. C. Program.
 KGFJ—3, News. 3:15, Lennie Conn Quartet. 3:30, Texas Outlaws.
 KFOX—3, At the Theater. 3:15, Mary Marlin. 3:30, Crimson Trail. 3:45, News.
 KFAC—3, Musical Masterpieces. 3:45, Josephine Heintz Garitz.
 KGER—3, News. 3:05, Music. 3:20, Long Beach Band.
 KMTR—3, Race Results. 3:30, Piano. 3:45, Race Results.
4 TO 5 P. M.
 KFI—4, Easy Aces. 4:15, Mr. Keen. 4:30, Art Baker's Notebook. 4:45, News.
 KNX—4, Fletcher Willey. 4:30, Hollywood and Vine.
 KHJ—4, Fulton Lewis, Jr. 4:15, Jack McLean's Orch. 4:30, Clipper.

Lovable Rascal



That lovable but mischievous rascal of the Aldrich Family, heard in a homey skit each week on the Kate Smith hour, is none other than Ezra Stone. They call him Henry in the radio play. Should you ever be in New York and want to see Henry, drop into the Broadway stage hit, 'What A Life' in which he has a featured role, aside from his radio duties.

KFWB—4, Ma Perkins. 4:15, Pepper Young. 4:30, Take it Easy.
 KECA—4, Bob Keith's Orch. 4:15, Your Government Reports. 4:30, Horace Heidt Orch.
 KEHE—4, Varieties. 4:15, Songs of Stars. 4:30, Jack Stanley's Orch.
 KMPC—4, Rev. Don Milligan. 4:30, Melodies. 4:45, News.
 KFVD—4, Tea Time. 4:15, Band Concert. 4:30, For You.
 KRKD—4, South Sea Boys. 4:15, News. 4:30, Venna Taylor.
 KFOX—4, Ma Perkins. 4:15, Pepper Young. 4:30, Eyesight Philosopher. 4:45, Dance Rhythms.
 KGFJ—4, News. 4:15, Tea Time. 4:30, Swing Carnival.
 KFAC—4, Musical Comedy Favorites. 4:30, Moods in Music.
 KGER—4, News. 4:10, Music. 4:15, Village Voice. 4:30, Monitor News. 4:45, Tadpole.
5 TO 6 P. M.
 KFI—5, Robert Hurd. 5:15, Life's Moving Stories. 5:30, Hobby Lobby.
 KNX—5, Tea for Two. 5:15, Howie Wing. 5:30, Judy and the Jesters. 5:45, News. 5:55, Oddities.
 KHJ—5, News. 5:15, Johnny Murray. 5:30, Dick Tracy. 5:45, Little Orphan Annie.
 KFWB—5, What Is It? 5:15, Uncle John. 5:30, Music in Air. 5:45, Bert Fiske, Piano.
 KECA—5, WPA Music. 5:15, News. 5:30, Vibraphone Time. 5:45, Jose Rodriguez.
 KEHE—5, Stuart Hamblen's Gang.
 KRKD—5, Gateway to Hall of Fame. 5:30, Race Results.
 KGFJ—5, News. 5:15, Henry King Orch. 5:30, Barney Andrews. 5:45, Sunset Swing.
 KFOX—5, Larry Clinton Orch. 5:15, Benny Goodman's Orch. 5:30, Tommy Dorsey's Orch. 5:45, Bunny Berigan's Orch.
 KFAC—5, Christian Science. 5:15, Tea Time Melodies. 5:30, Uncle Whoa Bill.
 KGER—5, News. 5:05, Lico Estrada.
6 TO 7 P. M.
 KFI—6, 30-Minute Sheff. 6:30, Inglewood Park Concert.
 KNX—6, Texaco Star Theater.
 KHJ—6, Jack Armstrong. 6:15, Gen. Shafter Parker. 6:30, Dorothy Gordon. 6:45, Johnson Family.
 KFWB—6, Voices of World. 6:30, Resorts. 6:45, Uncle Jimmy.
 KECA—6, Magnolia Blossoms. 6:15, Between the Lines. 6:30, Wings for Martins.
 KEHE—6, News. 6:15, Blue Room. 6:30, Sports. 6:45, Southern Serenade.
 KRKD—6:30, Santaella's Strings. 6:45, Aloha Serenaders.
 KGFJ—6, News. 6:15, Concert. 6:30, Norman Hartford Sports. 6:45, Singing Strings.
 KFOX—6, News. 6:10, Rolly & Lloyd. 6:30, Dance Rhythms. 6:45, Serenader.
 KFAC—6, News. 6:15, Sports Flashes. 6:30, Supper Dance Diversions. 6:45, June Michael.
 KGER—6, News. 6:15, Robert Noble. 6:30, Italian Journal.
 KMTR—6, Saddle Pals. 6:30, Calif. Pension.
7 TO 8 P. M.
 KFI—7, Kay Kyser's College of Musical Knowledge.
 KNX—7, 99 Men and a Girl; Raymond Page. 7:30, Ask-It-Basket.
 KHJ—7, News Dramas. 7:15, Fu Man Chu. 7:30, Lone Ranger.
 KFWB—7, Wednesday at 7. 7:15, Song Shoppers. 7:30, Santa Anita Races.

KECA—7, Ranson Sherman Presents. 7:30, Public Interest in Democracy.
 KEHE—7, Clifford Clinton. 7:15, Strollin' Tom. 7:30, News. 7:45, Phil Harris Orch.
 KRKD—7, News. 7:30, Do You Know
 KFSG—7:45, Convention Service.
 KGFJ—7, Spanish Hour.
 KFOX—7, Concert. 7:15, Strollin' Tom. 7:30, Swing Ding.
 KFAC—7, Jimmie Allen. 7:30, Floyd Allen.
 KGER—7, News. 7:05, Jewish Hour.
 KMTR—7:30, Mission Music Hall.
 KMTR—7, Corriere Del Aria.
8 TO 9 P. M.
 KFI—8, Amos 'n' Andy. 8:15, Edwin C. Hill. 8:30, Tommy Dorsey's Orch.
 KNX—8, To be announced. 8:15, Lum & Abner. 8:30, Paul Whiteman.
 KHJ—8, Frost Warnings, Tico Tico Trio. 8:15, Phillistine. 8:30, Answer Game.
 KFWB—8, Morgan Family. 8:30, California Pension. 8:15, KECA—8, Band Stand. 8:15, Monitor News. 8:30, Freddie Martin's Orch.
 KEHE—8, Phil Harris Orch. 8:15, Jack Stanley Orch. 8:30, Carol Lofner Orch.
 KFSG—8, Convention Service.
 KGFJ—8, News. 8:15, Negro News. 8:30, Auto Auction. 8:45, Italian Music.
 KFOX—8, Hawaiians. 8:15, Clyde McCoy. 8:30, String Time.
 KFAC—8, Strike Up Band. 8:30, Baseball Drama.
 KGER—8, News. 8:05, Rodolfo Hoyos.
 KMTR—8, Do You Want to Be an Announcer. 8:30, Garment Workers Talk. 8:45, Sports.
9 TO 10 P. M.
 KFI—9, Fred Allen, Town Hall Tonight.
 KNX—9, Gang Busters. 9:30, Sophie Tucker. 9:45, News.
 KHJ—9, News. 9:15, Dick Jurgens' Orch. 9:30, Joe Reichman's Orch. 9:45, Thomas Conrad Sawyer.
 KFWB—9, Life of Lincoln. 9:30, News. 9:45, Moonlight Sonata.
 KECA—9, Vern Osborne. 9:30, Parents on Trial.
 KEHE—9, Clyde McCoy Orch. 9:30, Cuban Orch.
 KMPC—9, Mary's Melody Makers. 9:45, News.
 KFSG—9, Convention Service. 9:45, Spirit of Life.
 KFOX—9, Landscape Gardener. 9:15, Geo. Redman Orch. 9:30, News. 9:45, Dance Music.
 KGFJ—9, News. 9:15, Shopping Guide. 9:30, Robert Benjamin Orch.
 KFAC—9, Concert Hall.
 KGER—9, News. 9:05, Fireside Parade. 9:30, Charlie Cook. 9:45, Music.
 KMTR—9, Floyd Johnson.
10 TO 11 P. M.
 KFI—10, News. 10:15, Meet Some People. 10:30, Penn Club Orch. 10:45, Shep Fields Orch.
 KNX—10, Westerners Quartet. 10:15, Nightcap Yarns. 10:30, Harry Owens Orch.
 KHJ—10, Phil Harris Orch. 10:30, Foolish Philosopher. 10:35, Chuck Foster's Orch.
 KFWB—10, Telephone Quiz. 10:30, Going Forward.
 KECA—10, Phil-Harmonia.
 KEHE—10, Piano. 10:15, Symphony Hall.
 KMPC—10, Mary's Melody Makers. 10:15, Command Performance. 10:30, Joe Morongo Orch. 10:45, Wax Harmonies.
 KFSG—10, Spirit of Life. 10:30, Melody Trio.

KGFJ—10, News. 10:15, Musical Comedy. 10:30, Dance Music.
 KFOX—10, Bob Hamilton's Orchestra. 10:30, Billy McDonald's Orch.
 KFAC—10:15, Maurice Kosloff. 10:30, Organ.
 KGER—10, News. 10:15, Gay 90's Revue. 10:45, Charlie Cook.
 KMTR—10, Conga Orch.
11 TO 12 MIDNIGHT
 KFI—11, Gary Nottingham Orch. 11:30, Silhouettes.
 KNX—11, Clyde McCoy's Orch. 11:30, Archie Bleyer's Orch.
 KHJ—11, Jack McLean's Orch. 11:30, Jim Walsh's Orch.
 KFWB—11, Going Forward. 11:30, Symphony Hall.
 KECA—11, Wax Works.
 KEHE—11, Clifford Clinton. 11:15, News. 11:30, Andy Iona Orch.
 KMPC—11, Dancing Feet. 11:15, Nocturne Swing. 11:30, Sweet and Low.
 KFVD—11, Fun House.
 KFSG—11, Angelus Temple.
 KGFJ—11, News. 11:15, Jimmy Grier Orch. 11:30, Rhythm.
 KFOX—11, Request Hour. 11:30, Turn Table Tunes.
 KGER—11, News. 11:05, Music. 11:30, Turn Table Tunes. 11:55, News.
 KMTR—11, Melody Lane.
12 MIDNIGHT
 KMPC—12, Swing Club.
 KHJ—12, Rhapsody in Wax.
 KFVD—12, Fun House to 4.
 KNX—12, News. 12:15, Dance-time.
 KRKD—12, Musicland Revue.
 KGFJ—12, Nite Owl to 6.
 KFAC—12, Mel LeMon.
 KGER—12, Hour of Hospitality.

Youthful Veteran



Joan Tetzel, 17-year-old veteran of radio whose record is the envy of many an older actor. She is heard regularly over KNX and the Columbia network.

THURSDAY

Feb. 23, 1939

HOUR-BY-HOUR DAILY LOG

6 TO 7 A. M.

KMPC—6:45, Cheerful Rhythms.
 KEHE—6, Musical Clock.
 KHJ—6, Rise and Shine.
 KFVB—6, Stu Wilson.
 KFVD—6, Spanish Program.
 KNX—6, Sunrise Salute.
 KRKD—6, Early Riser. 6:15, Rev. Johnston. 6:30, News. 6:45, Early Riser.
 KGFJ—6, Concert.
 KFOX—6, El Despertador.
 KFAC—6, Old Time Religion. 6:45, Melodic Gems.
 KGER—6, News. 6:05, Farm News. 6:25, Music. 6:30, Purple Mules.

7 TO 8 A. M.

KFI—7, Off the Record. 7:15, News. 7:30, Musical Newsy. 7:45, Radio on Review.
 KMPC—7, Morning Express. 7:30, Cheerful Rhythms.
 KEHE—7, Musical Clock.
 KHJ—7, Rise and Shine. 7:45, News.
 KFVB—7, Stu Wilson.
 KFVD—7, Spanish Program. 7:15, Covered Wagon Jubilee.
 KNX—7, Sunrise Salute. 7:30, News. 7:45, Sunrise Salute.
 KRKD—7, Early Riser. 7:45, News.
 KGFJ—7, News. 7:15, Choral Serenade. 7:30, Sports. 7:45, Rhythm Classics.
 KFOX—7, El Despertador. 7:30, News. 7:40, Music. 7:45, Rev. Van Delinder.
 KFAC—7, Pastor Reynolds. 7:30, Good Luck to You. 7:45, News.
 KGER—7, News. 7:15, Aubrey Lee.
 KECA—7, Story of Month. 7:15, Josh Higgins. 7:30, Financial. 7:45, News.

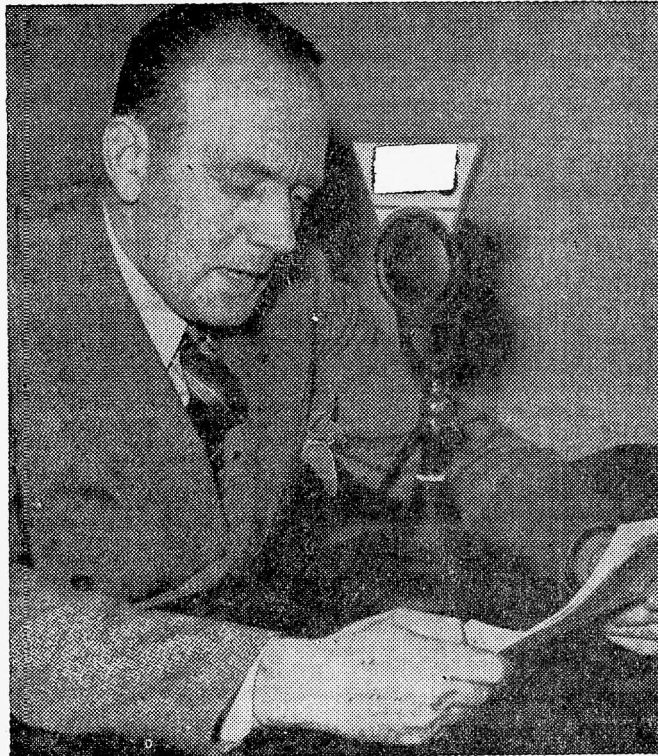
8 TO 9 A. M.

KFI—8, Ted White. 8:15, News. 8:30, Martha Meade. 8:45, David Harum.
 KNX—8, My Turn Now. 8:15, Captivators. 8:30, Westerners Quartet. 8:45, March Parade.
 KHJ—8, Sons of Pioneers. 8:15, Haven of Rest. 8:45, Mirandy.
 KFVB—8, Melodies. 8:45, Day Dreams.
 KECA—8, Church Quarter Hour. 8:15, Virginia Lane. 8:30, Paul Page. 8:45, Originalities.
 KEHE—8, News. 8:15, Early Edition. 8:30, Mirrors.
 KMPC—8, Unity Daily Word. 8:15, News. 8:30, Vocal Reveries. 8:45, Modern Tunes.
 KFVD—8, Covered Wagon Jubilee. 8:45, Dr. Reynolds.
 KGFJ—8, News. 8:15, Old Timers. 8:30, Hit Revue.
 KFOX—8, Moods Musical. 8:15, Dr. Clark. 8:30, Hit Tunes. 8:45, Ads.
 KFAC—8, Country Church of Hollywood. 8:30, Mirandy. 8:45, Mildred Lager.
 KGER—8, News. 8:05, Music. 8:15, Mizpah Hour. 8:45, Charlie Cook.
 KMTR—8:45, Blue Bloods of Turf.

9 TO 10 A. M.

KFI—9, Carters of Elm Street. 9:15, O'Neills. 9:30, Radio Trans. 9:45, Benny Walker.
 KNX—9, Committee L. A. Philharmonic. 9:15, Nancy James. 9:30, Helen Trent. 9:45, Our Gal Sunday.
 KHJ—9, Gloomchasers. 9:15, Home Town. 9:30, Happy Homes. 9:45, String Ensemble.
 KFVB—9, Waltz Time. 9:15, Dr. Reynolds. 9:30, Kitty Keene. 9:45, Desert Stories.
 KECA—9, News. 9:15, George Griffin. 9:30, National Farm and Home.
 KEHE—9, Melodies. 9:15, Dr. Raymond. 9:30, Clifford Clinton. 9:45, Swingtime.
 KMPC—9, Melodies. 9:30, Morning Echoes. 9:45, Rhythms in Beauty.

Romantic Adventures on KFI



Hal Burdick who broadcasts "Night Editor" over KFI-NBC on Tuesday nights at 7:45 p. m. The thrills and excitement that pack the lives of newspaper people are made vivid on this program.

KFVD—9, Covered Wagon Jubilee. 9:15, News. 9:30, Dr. Richardson.
 KMTR—9, Martin Thomas.
 KRKD—9:30, U. S. Weather Report.
 KGFJ—9, News. 9:15, Barney Andrews. 9:30, Footlite Favorites.
 KFOX—9, Rhythms. 9:15, Dr. Reynolds. 9:30, Kitty Keene. 9:45, News. 9:55, Best Buys.
 KFAC—9, Meditations. 9:15, Dr. Frank McCoy. 9:45, Women in the News.
 KGER—9, News. 9:05, Allimin. 9:15, Old Paths. 9:45, Rev. Adams.

10 TO 11 A. M.

KFI—10, John's Other Wife. 10:15, Plain Bill. 10:30, Dangerous Roads. 10:45, Dr. Kate.
 KNX—10, Goldbergs. 10:15, Life Can Be Beautiful. 10:30, Road to Life. 10:45, Mary Lee Taylor.
 KHJ—10, Mid-Morning Matinee. 10:30, As You Like It. 10:45, Beauty Secrets.
 KFVB—10, News. 10:15, Musicale. 10:30, Vic and Sade. 10:45, Morning Jamboree.
 KECA—10, National Farm and Home. 10:15, Agriculture Today. 10:30, Peables Takes Charge. 10:45, County Medical Association.
 KEHE—10, Shadows of the Past. 10:30, Rev. Anthony Zeoli.
 KMPC—10, Shopping News. 10:30, Dancing Feet.
 KFVD—10, Records. 10:30, Union Rescue Mission.
 KRKD—10, In My Solitude. 10:15, Sons of the Prairie. 10:45, Paddock Flashes.
 KMTR—10, Anthony Zeoli. 10:30, Turf Tales.

KGFJ—10, News. 10:15, Hawaiian Music. 10:30, Moods in Melody.
 KFOX—10, Word to Wives. 10:15, String Time. 10:30, Vic and Sade. 10:45, House of MacGregor.
 KFAC—10, Mid Morning Serenade. 10:30, L. A. City College. 10:45, Gothic Tower.
 KGER—10, News. 10:05, Ann Gildcrst. 10:15, Charlie Cook. 10:30, Almanac. 10:45, Organisms.

11 A. M. TO 12 NOON

KFI—11, Betty and Bob. 11:15, Arnold Grimm's Daughter. 11:30, Valiant Lady. 11:45, Hymns.
 KNX—11, Big Sister. 11:15, Aunt Jenny. 11:30, American School.
 KHJ—11, Nation's School. 11:30, Eddie Albright. 11:45, Hollywood Whispers.
 KFVB—11, Grady Cantrell. 11:15, Jamboree. 11:30, Journal of Living.
 KECA—11, Standard School. 11:45, Markets.
 KEHE—11, Rhythm Romance. 11:15, Reflections.
 KMPC—11, Dr. Louis Talbot. 11:30, Varieties.
 KFVD—11, News. 11:15, Dr. Stricker. 11:30, Shop with Violet.
 KRKD—11:30, News.
 KGFJ—11, News. 11:15, Dr. Wiseman. 11:30, Stan Myers Orch.
 KFOX—11, Variety. 11:30, News. 11:40, Music.
 KFAC—11, Man on Street. 11:30, Rhythm Styles. 11:45, Strikes and Spares.
 KGER—11, News. 11:10, Student News. 11:25, Music. 11:30, Cheerful Barful. 11:45, Saddle Tramps.

KMTR—11, Monitor News. 11:15, Housewives Exchange. 11:30, Saddle Pals.

12 NOON TO 1 P. M.

KFI—12, Mary Marlin. 12:15, Ma Perkins. 12:30, Pepper Young. 12:45, Guiding Light.
 KNX—12, Fletcher Wiley. 12:30, Harvey Harding, organ. 12:45, Olson Oddities.
 KHJ—12, News. 12:15, Rich Harmonies. 12:30, Cats and the Fiddle. 12:45, Good Health and Training.
 KFVB—12, Ben Sweetland. 12:15, News. 12:30, Swing Shots. 12:45, Mayor Bowron.
 KECA—12, U. S. Dept. of Agriculture. 12:15, Grand Slam Revue. 12:30, Hoosier Hop. 12:45, Between the Bookends.
 KEHE—12, News. 12:15, Dr. Frank McCoy. 12:30, Clifford Clinton. 12:45, Melodies.
 KMPC—12, Margo Lowell. 12:15, News. 12:30, Hoosier Hotshots. 12:45, Tunesful Topics.
 KFVD—12, Air Editor. 12:30, Maurice Johnson.
 KRKD—12, Mountaineers. 12:30, Curbstone Quiz.
 KGFJ—12, News. 12:15, This-That.
 KFOX—12, Hal Kemp's Orchestra. 12:15, Island Music. 12:30, Man on Street. 12:45, Music.
 KFAC—12, News. 12:15, Modern Melodies. 12:30, Organ. 12:45, City College.
 KGER—12, News. 12:10, Charlie Cook. 12:25, Mid-day Melodies. 12:35, Mrs. Essie Loyce.

1 TO 2 P. M.

KFI—1, Backstage Wife. 1:15, Stella Dallas. 1:30, Vic and Sade. 1:45, Girl Alone.
 KNX—1, Kitty Kelly. 1:15, Myrt and Marge. 1:30, Hilltop House. 1:45, Stepmother.
 KHJ—1, Women's Clubs. 1:15, Midstream. 1:30, Two Keyboards. 1:45, Book-a-Week.
 KFVB—1, G. Allison. 1:30, Polk Land Tours. 1:45, O'Neills.
 KECA—1, Club Matinee. 1:30, School News. 1:45, Classic Hour.
 KEHE—1, Memories. 1:15, Parade. 1:45, Eddie Brackett.
 KMPC—1, Fall Parade. 1:30, Studio Concert. 1:45, Varieties.
 KFVD—1, News. 1:30, Radio Poets. 1:45, Rhythm.
 KRKD—1:15, City Hall. 1:50, News.
 KGFJ—1, News. 1:15, Rainbow Trio. 1:30, Stan Myers Orchestra.
 KFOX—1, Stars Over Hollywood. 1:15, Treasure Chest. 1:30, Church Songs. 1:45, O'Neills.
 KFAC—1, Religious Science. 1:15, Sheriff's Office. 1:30, Board of Education.
 KGER—1, News. 1:05, Officials on Parade. 1:20, Bits of Hits. 1:30, Spanish Trio.
 KMTR—1:30, Geo. Higley Talk.

2 TO 3 P. M.

KFI—2, Houseboat Hannah. 2:15, True Stories. 2:30, Young Dr. Malone. 2:45, Bridge Club.
 KNX—2, Scattergood Baines. 2:15, Life and Love of Dr. Susan. 2:30, Woman's Forum. 2:45, Kitty Keene.
 KHJ—2, Lawrence Salerno. 2:15, Lets Play Bridge. 2:30, Weber's Concert Review. 2:45, Hugh Monaca's Orch.
 KFVB—2, Dr. Reynolds. 2:15, Guiding Light. 2:30, Sound Track.
 KECA—2, Classic Hour.
 KEHE—2, Listen, Ladies. 2:30, Tunes-Tempos. 2:45, Organ.
 KMPC—2, Swing Organ. 2:30, Salute to Inglewood.
 KFVD—2, Hawaiians. 2:15, Organ. 2:30, Vocals. 2:45, Music Moods.
 KRKD—2:15, Chuck Henry

Burns' Pal Dies

(Continued from Page 3)

and lines and ammunition.

Tourists stopped at the store to seek his autograph and make souvenir purchases.

Just a year ago Cy's business had increased so rapidly as a result of Bob's radio tales, he was forced to move into a larger store in Fort Smith, across the river.

All of Burn's stories portrayed Cordell as the man who would do anything for a friend, and that's the kind of a person he was in real life, Bob claims.

These are the reason you have not

Alice King, Addition To "Listen, Ladies"

Newest addition to KEHE's vocal staff is Alice King, formerly vocalist with Horace Heidt.

Featured with three sisters on Heidt's Program, Alice now solos on KEHE's "Listen, Ladies" program. (Tuesday thru Fridays at 2:00 p. m., Monday nights at 9:00 p. m.)

heard his name mentioned on Kraft Music Hall of late.

In the last few years of his life Cy Cordell became one of the most famous radio characters that ever lived, who had never been on the air.

Movies Shun Air

(Continued from Page 3)

as president of the Kellogg Circle air program. Lack of suitable material was given as the fact behind this action. He will not be heard on this program during the present series at least.

Last Sunday Cary Grant, called back to the Circle, requested his release from the four remaining broadcasts under his contract with Kellogg. He was successful in obtaining his release.

Now, it is understood Zanuck is looking over contracts of 20th-CF players to see if he can weed out more of them from the commercial airlines.

THURSDAY

KGFI—2, News. 2:15, Civic. 2:30, Concert Gems.
 KFON—2, Christian Science. 2:15, Guiding Light. 2:30, Foster Rucker.
 KFAC—2, U. S. C. Program. 2:15, Famous Voices. 2:30, Band Concert.
 KGER—2, News. 2:05, Geo. Strange. 2:15, Music. 2:30, Long Beach Band.
 KMTR—2, Race Results. 2:45, Stock Reports.

3 TO 4 P. M.

KFI—3, Bridge Club. 3:15, I Love a Mystery. 3:30, Woman's Magazine. 3:45, Ann Warner.
 KNN—3, Ma Perkins. 3:15, Stafford Sisters. 3:30, Today: Bob Trout. 3:45, Best Buys. 3:50, KNXtra.

KHJ—3, Feminine Fancies.

3:30, Sands of Time.
 KFVB—3, Clover Kerr. 3:15, Mary Marlin. 3:30, Matinee Melodies.

KECA—3, Met. Opera Guild. 3:15, Social Relations. 3:30, Tito and His Swingtet. 3:45, Symphony Preview.

KEHE—3, News. 3:15, Musical Cocktails. 3:45, Guests.

KMPC—3, Singing Strings. 3:30, Picture Rhythms.

KFVD—3, News. 3:15, Memories. 3:30, Hot Wax. 3:45, Novelty Notes.

KRKD—3:30, U. S. C. Program.

KGFI—3, News. 3:15, Organ. 3:30, Texas Outlaws.

KFON—3, at the Theater. 3:15, Mary Marlin. 3:30, Talking Drums. 3:45, News.

KFAC—3, Musical Masterpieces.

KGER—3, News. 3:05, Disabled Veterans. 3:20, Long Beach Band.

KMTR—3, Race Results. 3:30, Memories. 3:45, Race Results.

4 TO 5 P. M.

KFI—4, Easy Aces. 4:15, Mr. Keen. 4:30, Art Baker's Notebook. 4:45, News.

KNN—4, Fletcher Wiley. 4:30, City Salute. 4:45, Tea for Two.

KHJ—4, Fulton Lewis, Jr. 4:15, Dance Orch. 4:30, Clipper.

KFVB—4, Ma Perkins. 4:15, Pepper Young. 4:30, Take It Easy.

KECA—4, Bob Keith's Orch. 4:15, Better Business Bureau. 4:30, Maurice Spitalny's Orch. 4:45, Elvira Rios.

KEHE—4, Moments Musicale. 4:15, Songs of Stars. 4:30, Interlude.

KMPC—4, Rev. Don Milligan. 4:30, Melodies. 4:45, News.

KFVD—4, Tea Time. 4:15, Lady Make Believe. 4:30, For You.

KRKD—4, South Sea Boys. 4:15, News. 4:30, Venna Taylor.

KFON—4, Ma Perkins. 4:15, Pepper Young. 4:30, Dance Rhythms.

KGFI—4, News. 4:15, Tea Time. 4:30, Swing Carnival.
 KFAC—4, City College. 4:15, Musical Comedy Favorites. 4:30, Moods in Music.
 KGER—4, News. 4:10, Music. 4:15, Village Voice. 4:30, Monitor News. 4:45, Tadpole.

5 TO 6 P. M.

KFI—Rudy Vallee.
 KNN—5, News. 5:15, Howie Wing. 5:30, Joe Penner.

KHJ—5, News. 5:15, Johnny Murray. 5:30, Dick Tracy. 5:45, Little Orphan Annie.

KFVB—5, What Is It? 5:15, Uncle John. 5:30, Music in Air.

KECA—5, Parade of Progress. 5:30, Eastman School of Music.

KEHE—5, Stuart Hamblen's Gang.

KRKD—5, Round Table. 5:30, Race Results.

KGFI—5, News. 5:15, Jose Manzanera's Orch. 5:30, Rhythm Rascals. 5:45, Sunset Bridge.

KFON—5, Larry Clinton's Orchestra. 5:15, Benny Goodman's Orch. 5:30, Tommy Dorsey's Orch. 5:40, Beauty Talk. 5:45, Bunny Berigan's Orch.

KFAC—5, Christian Science. 5:15, Pet Parade. 5:30, Uncle Whoa Bill.

KGER—5, News. 5:05, Lico Estrada.

6 TO 7 P. M.

KFI—6, Good News of 1939.

KNN—6, Major Bowes Amateurs.

KHJ—6, Jack Armstrong. 6:15, Gen. Shafter Parker. 6:30, Ed. Fitzgerald Review. 6:45, Johnson Family.

KFVB—6, News. 6:15, Gaylord Carter. 6:30, Resorts. 6:45, Uncle Jimmy.

KECA—6, Eastman School of Music. 6:15, Whispering Voice Choir. 6:30, American Town Meeting.

KEHE—6, News. 6:15, Blue Room. 6:30, Sports. 6:45, Book Club.

KRKD—6, Beverly Hillbillies. 6:30, Santaella Strings. 6:45, Aloha Serenaders.

KGFI—6, News. 6:15, Concert. 6:30, Norman Hartford Sport. 6:45, King's Jesters.

KFON—6, News. 6:10, Rolly Lloyd. 6:30, Dance Rhythms. 6:45, Serenader.

KFAC—6, News. 6:15, Mike Frankovich. 6:30, Supper Dance Diversions. 6:45, June Michael.

KGER—6, Sports. 6:15, Selected Vocal. 6:30, Jewish Hour.

KMTR—6, Saddle Pals. 6:30, Calif. Pension.

7 TO 8 P. M.

KFI—7, Music Hall. Bing Crosby.

KNN—7, Tuneup Time. 7:45, American Viewpoint.

Feb. 23, 1939

HOUR-BY-HOUR DAILY LOG

KHJ—7, Phantom Pilot. 7:15, Inside of Sports. 7:30, Green Hornet.

KFVB—7, Pepperdine College. 7:15, Shout Hallelujah. 7:30, Santa Anita Races.

KECA—7, American Town Meeting. 7:30, Wayne Van Dyne, tenor. 7:45 Minstrel Show.

KEHE—7 Clifford Clinton. 7:15 Strollin Tom. 7:30, News. 7:45 Phil Harris Orch.

KRKD—7, News. 7:30, Do You Know?

KFSG—7:45, Convention Service.

KGFI—7, Spanish Hour.

KMTR—7, Corriere Dell Aria.

KFON—7, Concert. 7:15, Strollin Tom. 7:30, Swing Ding.

KFAC—7, Jimmie Allen. 7:30, Mrs. G. W. Ballard.

KGER—7, News. 7:05, American-Italian Hour.

8 TO 9 P. M.

KFI—S. Amos 'n' Andy. 8 15, Standard Symphony.

KNN—S, Inside Story. 8:30, Kate Smith.

KHJ—8, Frost Warning, Griff Williams Orch. 8:15, Don't You Believe It. 8:30, Chuck Foster's Orch. 8:55, To the Rescue.

KFVB—8, Morgan Family. 8:30, Calif. Pension.

KECA—8, Calif. Safety Council. 8:15, Arty Shaw's Orch. 8:30, Packard Parade. 8:45, Larry Clinton's Orch.

KEHE—8, Phil Harris Orch. 8:15, Jack Stanley Orch. 8:30, Carol Lofner Orch.

KFSG—8, Convention Service.

KGFI—8, News. 8:15, Negro News. 8:30, Ross Haywood.

KMTR—8:30, Little Theater. 8:45, Property Owners Talk.

KFON—8, Hawaiians. 8:15, Eventide Echoes. 8:30, String Time.

KFAC—8, Strike Up Band. 8:30, Hal Berger's Baseball Drama.

KGER—8, News. 8:05, Rodolfo Hoyos.

9 TO 10 P. M.

KFI—9, Standard Symphony. 9:15, Broadway Memories. 9:45, Four Star Tonight.

KNN—9, Kate Smith. 9:30, I Want a Divorce. 9:45, Bert Lytell. Drama Time.

KHJ—9, News. 9:15, Ben Alexander's Orch. 9:30, Famous Jury Trials.

KFVB—9, Maurice Zeom. 9:15, Symphonic Serenade. 9:30, News. 9:45, Moonlight Sonata.

KECA—9, Curious World. 9:15, Lee Shelley Orch. 9:30, Herbie Kay Orch. 9:45, University Explorer.

KEHE—9, Clyde McCoy's Orch. 9:30, Maurice. 9:45, Cuban Orch.

KMPC—9, 9:30, Mary's Melody Makers. 9:45, News.

KFSG—9, Convention Service.

KGFI—9, News. 9:15, Shopping Guide. 9:30, Rex Melbourne Orch.

KFON—9, Gospel Reporters. 9:30, News. 9:45, Dance Music.

KFAC—9, Concert Hall.

KGER—9 News. 9:05, Spanish Orphans. 9:30, Earaches of 1939.

KMTR—9, Floyd Johnson.

10 TO 11 P. M.

KFI—10, News. 10:15, Shep Fields Orch. 10:30, Emil Baffa's Orch.

KNN—10, News. 10:15, Nightcap Yarns. 10:30, Harry Owens Orch. 10:45, Maxine Sullivan.

KHJ—10, Phil Harris Orch. 10:30, Skinny Ennis Orch. 10:45, Playboys.

KFVB—10, Telephone Quiz. 10:30, Going Forward.

KECA—10, Phil-Harmonia.

KEHE—10, Negro Hour.

KMPC—10, Mary's Melody Makers. 10:15, Star Shots. 10:30, Joe Morengo Orch. 10:45, Wax Harmonies.

KFSG—10, Convention Service. 10:30, Hymns.

KGFI—10, News. 10:15, Musical Comedy. 10:30, Dance Music.

KFON—10, Bob Hamilton's Orch. 10:30, Ross Ballroom.

KFAC—10:30, Organ.

KGER—10, News. 10:15, Gay 20's Revue. 10:45, Charlie Cook.

KMTR—10, Conga Orch.

11 TO 12 MIDNIGHT

KFI—11, Carlos Molino Orch. 11:30, Buddy Rogers' Orch.

KNN—11, Clyde McCoy Orch. 11:30, Archie Bleyer's Orch.

KHJ—11, Shep Fields Orch. 11:15, Jack McLean's Orch. 11:45, Phil Harris Orch.

KFVB—11, Going Forward. 11:30, Symphony Hall.

KECA—11, Musical Encore.

KEHE—11, Clifford Clinton. 11:15, News. 11:30, Andy Iona Orch.

KMPC—11 Dancing Feet. 11:30 Sweet and Low. 11:45, Let's Dance.

KFSG—11, Gospel Accordion. 11:30, Memory Melodies.

KGFI—11, News. 11:15, Ross Haywood. 11:30, Rhythm.

KFON—11, Shep Fields Orch. 11:15, Jack McLean Orch. 11:45, Phil Harris Orch.

KFAC—11, Geo. Redman's Orch. 11:30, News. 11:45, Organ.

KMTR—11, Melody Lane.

12 MIDNIGHT

KMPC—12, Swing Club.

KHJ—12, Rhapsody in Wax.

KFVD—12, Fun House to 4.

KNN—12, News. 12:15, Dance time to 1 a. m.

KRKD—12, Musicland Revue.

KGFI—12, Nite Owl to 6.

KFAC—12, Mel Le Mon.

FRIDAY

Feb. 24, 1939

HOURLY-DAILY LOG

6 TO 7 A. M.
 KMPC—6:45, Cheerful Rhythms
 KEHE—6, Musical Clock.
 KHJ—6, Rise and Shine.
 KFVB—6, Stu Wilson.
 KFVD—6, Spanish Program.
 KNX—6, Sunrise Salute.
 KRKD—6, Early Riser. 6:15.
 Rev. Johnston. 6:30. News.
 6:45, Early Riser.
 KGFJ—6, Concert.
 KFOV—6, El Despertador.
 KFAC—6, Old Time Religion.
 6:45, Melodic Gems.
 KGER—6, News. 6:05, Farm
 News. 6:25. Music. 6:30, Purple
 Mules.

7 TO 8 A. M.

KFI—7, Off the Records. 7:15.
 News. 7:30, Musical Newsy.
 7:45, Radio Review.
 KMPC—7, Morning Express.
 7:30, Cheerful Rhythms.
 KEHE—7, Musical Clock.
 KHJ—7, Rise and Shine. 7:45,
 News.
 KFVB—7, Stu Wilson.
 KFVD—7, Spanish Program.
 7:15, Covered Wagon Jubilee.
 KNX—7, Sunrise Salute. 7:30,
 News. 7:45, Sunrise Salute.
 KRKD—7, Early Riser. 7:45,
 News.
 KGFJ—7, News. 7:15, Sym-
 phonic Choir. 7:30, Sports.
 7:45, Rhythm Classics.
 KFOV—7, El Despertador. 7:30
 News. 7:40, Music. 7:45, Rev.
 Van Delinder.
 KFAC—7, Pastor Reynolds.
 7:30, Good Luck to You. 7:45,
 News.
 KGER—7, News. 7:15, Aubrey
 Lee.
 KECA—7, Story of Month. 7:15
 Josh Higgins. 7:30, Financial.
 7:45, News.

8 TO 9 A. M.

KFI—8, Ted White. 8:15, News.
 8:30, Reserve. 8:45, David
 Harum.
 KNX—8, Morning Melodies.
 8:30, Russell Brown. 8:40,
 Surprise Your Husband. 8:45,
 Rhapsody in Rhythm.
 KHJ—8, Sons of Pioneers. 8:15,
 Haven of Rest. 8:45, Mirandy.
 KFVB—8, Melodies.
 KECA—8, Church Quarter
 Hour. 8:15, Virginia Lane.
 8:30, Paul Page. 8:45, Original-
 ities.
 KEHE—8, News. 8:15, Early
 Edition. 8:30, Mirrors.
 KMPC—8, Unity Daily Word.
 8:15, News. 8:30, Vocal Re-
 veries. 8:45, Modern Tunes.
 KFVD—8, Covered Wagon Ju-
 bilee. 8:45, Dr. Reynolds.
 KRKD—8:30, State Employment
 Service.
 KGFJ—8, News. 8:15, Old
 Timers. 8:30, Hit Revue.
 KFOV—8, Moods Musical. 8:15,
 Dr. Clark. 8:30, Hit Tunes.
 8:45, Ads.
 KFAC—8, Country Church of
 Hollywood. 8:30, Mirandy.
 8:45, Mildred Lager.
 KGER—8, News. 8:05, Music.
 8:15, Mizpah Hour. 8:45, Vi
 and Em.
 KMTR—8:45, Turf Blue Bloods.

9 TO 10 A. M.

KFI—9, Carters of Elm Street.
 9:15, O'Neills. 9:30, Smile Pa-
 rade.
 KNX—9, Mary Margaret Mc-
 Bride. 9:15, Nancy James.
 9:30, Helen Trent. 9:45, Our
 Gal Sunday.
 KHJ—9, Carolyn Pryce. 9:15,
 Home Town. 9:30, Happy
 Homes. 9:45, Swingsters.
 KFVB—9, Melodies. 9:15, Dr.
 Reynolds. 9:30, Kitty Keene.
 9:45, Morning Musical.
 KECA—9, News. 9:15, Alden
 Edkins. 9:30, National Farm-
 Home.
 KEHE—9, Melodies. 9:15, Dr.
 Reynolds. 9:30, Clifford Clin-
 ton. 9:45, Swingtime.
 KFVD—9, Covered Wagon Ju-
 bilee. 9:15, News. 9:30, Dr.
 Richardson.

KMPC—9, Melodies. 9:15, Mar-
 ket with Mabel. 9:30, Echo-
 es. 9:45, Rhythms in Beau-
 ty.
 KRKD—9:30, Weather Fore-
 cast.
 KGFJ—9, News. 9:15, Frank
 Trombar Orch. 9:30, Footlite
 Favorites.
 KFOV—9, Rhythms. 9:15, Dr.
 Reynolds. 9:30, Kitty Keene.
 9:45, News. 9:55, Best Buys.
 KFAC—9, Meditations. 9:15,
 Dr. Frank McCoy. 9:30, Three
 Quarter Time. 9:45, Women
 in the News.
 KGER—9, News. 9:05, Allimin.
 9:15, Full Gospel Assembly.
 9:45, Music.
 KMTR—9, Martin Thomas.

10 TO 11 A. M.

KFI—10, John's Other Wife.
 10:15, Plain Bill. 10:30, Dan-
 gerous Roads. 10:45, Dr.
 Kate.
 KNX—10, Goldbergs. 10:15 Life
 can be Beautiful. 10:30, Road
 of Life. 10:45, Tena and Tim.
 KHJ—10, Mid-Morning Matinee
 10:30, Red River Dave. 10:45,
 Voice of Experience.
 KFVB—10, News. 10:15, Musi-
 sale. 10:30, Vic and Sade.
 10:45, Swap Shop.
 KECA—10, National Farm and
 Home. 10:15, Agriculture To-
 day. 10:30, Peables Takes
 Charge. 10:45, Four of Us.
 KEHE—10, Shadows. 10:30,
 Rev. Anthony Zeoli.
 KMPC—10, Shopping News.
 10:30, Dancing Feet.
 KFVD—10:30, Union Rescue
 Mission.
 KRKD—10, In My Solitude.
 10:15, Frontier Riders. 10:45,
 Paddock Flashes.
 KGFJ—10, News. 10:15, Men-
 ders. 10:30, Moods to Memory.
 KFOV—10, Word to Wives.
 10:15, Matinee. 10:30, Vic and
 Sade. 10:45, House of Mac-
 Gregor.
 KFAC—10, American Immor-
 tals. 10:30, Harmony Home.
 10:45, Gothic Tower.
 KGER—10, News. 10:05, Ann
 Gilchrist. 10:15, Charlie Cook.
 10:30, Travel Talk. 10:45, Or-
 gan.
 KMTR—10, Anthony Zeoli.
 10:30, Turf Tales. 10:45, 29
 Palms.

11 A. M. TO 12 NOON

KFI—11, Betty and Bob. 11:15,
 Arnold Grimm's Daughter.
 11:30, Valiant Lady. 11:45,
 Betty Crocker.
 KNX—11, Big Sister. 11:15,
 Aunt Jenny. 11:30, American
 School.
 KHJ—11, Nation's School. 11:30
 Eddie Albright. 11:45, Muse
 and Music.
 KFVB—11, Grady Cantrell.
 11:15, Federal Housing. 11:30,
 Journal of Living.
 KECA—11, Stringtime. 11:30,
 Know Your Child. 11:45,
 Markets.
 KEHE—11, Morning Dancing.
 11:15, Reflections.
 KMPC—11, Dr. Louis Talbot.
 11:30, Variety.
 KFVD—11, News. 11:45, Dr.
 Stricker. 11:30, Shop with Vi-
 olet.
 KRKD—11, Records. 11:30,
 News. 11:45, Records.
 KGFJ—11, News. 11:15, Dr.
 Wiseman. 11:30, Russ Mor-
 row Orch.
 KFOV—11, Variety. 11:30, News.
 11:40, Music.
 KFAC—11, Man on the street.
 11:30, Home Beautiful. 11:45,
 Strikes & Sparer.
 KGER—11, News. 11:10, Stud-
 ent News. 11:25, Music. 11:30
 Cheerful Earful. 11:45, Step-
 ladder.
 KMTR—11, Monitor News. 11:15,
 Answer Me This. 11:30, Sad-
 die Pals.

12 NOON TO 1 P. M.

KFI—12, Mary Marlin. 12:15,
 Ma Perkins. 12:30, Pepper
 Young. 12:45, Guiding Light.
 KNX—12, Fletcher Wiley.
 12:30, Harvey Harding, or-
 ganist. 12:45, Yours Sin-
 cerely.
 KHJ—12, News. 12:15, Frank
 Vanay. 12:30, Cats and the
 Fiddle. 12:45, Good Health
 and Training.
 KFVB—12, Ben Sweetland.
 12:15, News. 12:30, Swing
 Shots. 12:45, Major Bateson.
 KECA—12, U. S. Dept of Agri-
 culture. 12:15, Calif. Agri-
 culture. 12:45, Common-
 wealth club.
 KEHE—12, News. 12:15, Dr.
 Frank McCoy. 12:30, Clifford
 Clinton. 12:45, Melodies.
 KMPC—12, Studio Concert.
 12:15, News. 12:30, Tuneful
 Topics.
 KFVD—12, Air Editor. 12:30,
 Maurice Johnson.
 KRKD—12, Mountaineers. 12:30
 Curbstone Quiz.
 KGFJ—12, News. 12:15, This-
 That.
 KFOV—12, Hal Kemp Orch.
 12:15, Life's Moving Stories.
 12:30, Man on Street. 12:45,
 Gardener of the Air.
 KFAC—12, News. 12:15, Morn-
 ing Melodies. 12:30, Organ.
 12:45, L. A. City College.
 KGER—12, News. 12:10, Melo-
 dies. 12:20, Charlie Cook.
 12:35, Mrs. Essie Lacey.

1 TO 2 P. M.

KFI—1, Backstage Wife. 1:15,
 Stella Dallas. 1:30, Vic and
 Sade. 1:45, Girl Alone.
 KNX—1, Kitty Kelly. 1:15,
 Myrt and Marge. 1:30, Hilltop
 House. 1:45, Stepmother.
 KHJ—1, National Emergency
 Council. 1:15, Midstream. 1:30
 Wayne & Dick. 1:45, Book-a
 Week.
 KFVB—1, G. Allison. 1:30,
 Waltz Time. 1:45, O'Neills.
 KECA—1, Commonwealth Club
 1:30, School News. 1:45, Clas-
 sic Hour.
 KEHE—1, Memories. 1:15, Pa-
 rade. 1:30, Revue.
 KMPC—1, Fall Parade. 1:30,
 Studio Concert. 1:45, Vari-
 ety.
 KFVD—1, News. 1:15, Favor-
 ites. 1:30, Poets' Club. 1:45,
 Rhythms.
 KRKD—1:15, City Hall. 1:50,
 News.
 KGFJ—1, News. 1:15, Mid-
 stream. 1:30, Wayne & Dick.
 1:45, Hatterfields.
 KFOV—1, Brevities. 1:15, Rhyth-
 mic Age. 1:30, Church
 Songs. 1:45, O'Neills.
 KFAC—1, Religious Science.
 1:15, Georgena Franz. 1:30,
 Board of Education.
 KGER—1, News. 1:05, Officials
 on Parade. 1:20, Music. 1:30,
 Spanish Trio.
 KMTR—1:30, Geo. Highley.

2 TO 3 P. M.

KFI—2, Houseboat Hannah.
 2:15, True Story. 2:30, Young
 Dr. Malone. 2:45, Bridge Club.
 KNX—2, Scattergood Bains.
 2:15, Life and Love of Dr. Sus-
 san. 2:30, Woman's Forum.
 2:45, Kitty Keene.
 KHJ—2, Discovering Our
 Schools. 2:15, Let's Play
 Bridge. 2:30, TBA. 2:45,
 Radio Campus.
 KFVB—2, Dr. Reynolds. 2:15,
 Guiding Light. 2:30, Sound
 Track.
 KECA—2, Classic Hour.
 KEHE—2, Tune-Tempos. 2:45,
 Organalities.
 KMPC—2, Swing Organ. 2:30,
 Frank Gallagher.
 KFVD—2, Hawaiians. 2:15, Or-
 gan. 2:30, Vocals. 2:45, Mus-
 ic Moods.
 KRKD—2:15, Chuck Henry
 Orch.
 KGFJ—2, News. 2:15, Civic.
 2:30, Concert.

KFOX—2, Christian Science.
 2:15, Guiding Light. 2:30,
 Foster Rucker.
 KFAC—2, Eunice Cheaney. 2:15,
 Famous Voices. 2:30, Band
 Concert.
 KGER—2, News. 2:05, Geo.
 Strange. 2:15, Charlie Cook.
 2:30, Long Beach Band.
 KMTR—2, Race Results. 2:45,
 Stock Reports.

3 TO 4 P. M.

KFI—3, Bridge Club. 3:15, I
 Love a Mystery. 3:30, Wom-
 an's Magazine.
 KNX—3, Ma Perkins. 3:15, Ju-
 lia Blake. 3:30, Bob Trout.
 3:45, Best Buys. 3:50, KNX
 tra.
 KHJ—3, Feminine Fancies. 3:30,
 Little Revue.
 KFVB—3, Clover Kerr. 3:15,
 Mary Marlin. 3:30, Short
 Shots. 3:45, Easy Hour.
 KECA—3, Norman Cloutier's
 Orch. 3:05, Brief Case. 3:15,
 Dorothy Rochelle. 3:25, News.
 3:30, Lyon & Marlowe. 3:45,
 Rollin's Orch.
 KEHE—3, News. 3:15, Amy,
 Belle and Vi. 3:30, Cock-
 tails.
 KMPC—3, Singing Strings. 3:30
 Aunt Sue. 3:45, Picture Rhyth-
 ms.
 KFVD—3, News. 3:15, Memo-
 ries. 3:30, Hot Wax. 3:45,
 Novelty Notes.
 KRKD—3, Walter Brown Mur-
 ray. 3:30, U. S. C. Musicale.
 KGFJ—3, News. 3:15, Louis
 Chicco Orch. 3:30, Texas Out
 laws.
 KFOX—3, At the Theater. 3:15
 Mary Marlin. 3:30, Crimson
 Trail. 3:45, News.
 KFAC—3, Musical Masterpiece.
 KGER—3, News. 3:05, Modernos.
 3:20, Long Beach Band.
 KMTR—3, Race Results. 3:30,
 Memories. 3:45, Race Results.

4 TO 5 P. M.

KFI—4, Ann Warner. 4:15, Bet-
 ter Business. 4:30, Art Bak-
 er's Notebook. 4:45, News.
 KNX—4, Fletcher Wiley. 4:30,
 Judy and the Jesters. 4:45,
 Hollywood Scrapbook.
 KHJ—4, Fulton Lewis, Jr. 4:15,
 Jack McLean Orch. 4:30, Clip-
 ner.
 KFVB—4, Ma Perkins. 4:15,
 Pepper Young. 4:30, Matinee
 Melodies.
 KECA—4, Artie Shaw's Orch.
 4:30, Trio Time. 4:45, Oscar
 Shumsky.
 KEHE—4, Cocktails. 4:15, Song
 of Stars. 4:30, Jack Stanley
 Orch.
 KMPC—4, Rev. Don Milligan.
 4:30, Melodies. 4:45, News.
 KFVD—4, Tea Time. 4:15, Band
 Concert. 4:30, For You.
 KRKD—4, South Sea Boys. 4:15
 News. 4:30, Venna Taylor.
 KGFJ—4, News. 4:15, Tea
 Time. 4:30, Swing Carnival.
 KFOX—4, Ma Perkins. 4:15,
 Pepper Young. 4:30, Dance
 Rhythms.
 KFAC—4, Musical Comedy Fa-
 vorites. 4:30, Moods in Music.
 KGER—4, News. 4:10, Music.
 4:15, Village Voice. 4:30,
 Monitor News. 4:45, School
 Kids.

5 TO 6 P. M.

KFI—5, Warden Laves' Crimi-
 nal Cases. 5:30, Your Govern-
 ment at Your Service. 5:45,
 Know Your Schools.
 KNX—5, Yeo at the Organ.
 5:15, Howie Wing. 5:30, Tea
 for Two. 5:45, News. 5:55,
 Oddities.
 KHJ—5, News. 5:15, Johnny
 Murray. 5:30, Dick Tracy.
 5:45, Little Orphan Annie.
 KFVB—5, Song Shoppers. 5:15,
 Uncle John. 5:30, Music on
 Air. 5:45, Bert Fiske, piano.
 KECA—5, Eddie Swartout's
 Music. 5:15, News. 5:30, Jam-
 boree.

FRIDAY

Feb. 24, 1939

HOURLY-DAILY LOG

KEHE-5, Stuart Hamblen's Gang. KRKD-5, Santaella Presents. 5:30, Race Results. KGFJ-5, News. 5:15, Louis Pacheco Orch. 5:30, Robert Benjamin. 5:45, Sunset Swing KFOX-5, Larry Clinton Orch. 5:15, Benny Goodman Orch. 5:30, Tommy Dorsey Orch. 5:40, Beauty Talk. 5:45, Artie Shaw's Orch. KFAC-5, Christian Science. 5:15, Tea Time Melodies. 5:30, Uncle Whoa Bill. KGER-5, News. 5:05, Lico Estrada.

6 TO 7 P. M.

KFI-6, Waltz Time. 6:30, March of Time. KNX-6, Campbell Playhouse. KHJ-6, Jack Armstrong. 6:15 Gen. Shafter Parker. 6:30, Dorothy Gordon. 6:45, Johnson Family. KFVB-6, News. 6:15, Gaylord Carter. 6:30, Resorts. KECA-6, Plantation Party. 6:30, Horse and Buggy Days. 6:45, Voice of Motordom. KEHE-6, News. 6:15, Blue Room. 6:30, Sport. 6:45, Dinner Dance. KRKD-6:30, Santaella Strings. 6:45, Aloha Serenaders. KGFJ-6, News. 6:15, Concert. 6:30, Norman Hartford Sport. 6:45, Stan Myers Orch. KPOX-6, News. 6:10, Chick MacGregor. 6:30, Rolly and Lloyd. 6:30, Dance Rhythms. 6:45, Serenader. KFAC-6, News. 6:15, Sports Flashes. 6:30, Supper Dance Diversions. 6:45, June Michael. KGER-6, News. 6:15, Robert Noble. 6:30, Jewis Hour. KMTR-6, Saddle Pals. 6:30, Calif. Pension. 7 TO 8 P. M. KNX-7, Grand Central Station. Harry L. Hopkins.

KFI-7, Guy Lombardo. 7:30, Uncle Ezra. 7:45 Jimmy Fidler. KHJ-7, News Dramas. 7:15, Fu Man Chu. 7:30, Lone Ranger. KFVB-7, In the Gloaming. 7:30, Santa Anita Races. KECA-7, Sports Parade. KEHE-7, Clifford Clinton. 7:15, Strollin' Tom. 7:30, News. 7:45, Phil Harris Orchestra. KRKD-7, News. 7:30, Do You Know? 7:45, German Music. KFOX-7, Concert. 7:15, Strollin' Tom. 7:30, Swing Ding. KGFJ-7, Spanish Hour. KFAC-7, Jimmie Allen. 7:30, Mrs. G. W. Ballard. 7:45, L. A. Playground Dept. KGER-7, News. 7:05, Jewish Hour. KMTR-7, Corriere Dell Aria.

8 TO 9 P. M.

KFI-8, Amos 'n' Andy. 8:15, Cabbages and Kings. 8:30, Death Valley Days. KNX-8, Through Sport Glass. 8:15, Lum and Abner. 8:30, Burns and Allen. KHJ-8, Frost Warnings. 8:05, Geo. Olson's Orch. 8:15, Philistine. 8:30, Hancock Ensemble. KFVB-8, Morgan Family. 8:30, Calif. Pension. KECA-8, Band Stand. 8:15, Winter Snow Sports. 8:30, Waltz Time. KPHE-8, No vena Service. 8:45, Carol Lofner Orch. KRKD-8, German Music. 8:15 Little Tokyo. KGFJ-8, News. 8:15, Negro News. 8:30, Auto Auction. 8:45, Italian Music. KFOX-8, Hawaiians. 8:15, Eventide Echoes. 8:30, String Time. KFAC-8, Strike Up Band. 8:30, Hal Berger's Baseball Drama. KGER-8, News. 8:05, Rodolfo Hoyos. KMTR-8:15, T. W. Hughes. 8:30, Valley Amateurs.

9 TO 10 P. M.

KFI-9, Gilmore Circus. 9:30, Good Morning Tonight. KNX-9, First Nighter. 9:30, Jack Haley. Ted Fio-Rito. KHJ-9, News. 9:15, Sammie Kay's Orch. 9:30, Ina Ray Hutton's Orch. 9:45, Thomas Conrad Sawyer. KFVB-9, America Marches On. 9:30, News. 9:45, Hollywood Legion boxing. KECA-9, Freddy Martin's Orch. 9:30, Buddy Rogers' Orch. KEHE-9, Listen Ladies. KMPC-9:30, Mary' Melody Makers. 9:45, News. KRKD-9, Little Tokio. 9:30, All-Request Program. KGFJ-9, News. 9:15, Shopping Guide. 9:30, Jimmy Walsh Orch. KFOX-9, Landscape Gardener. 9:15, Freddie Berrens' Orch. 9:30, News. 9:45, Geo. Redman's Orch. KFAC-9, Concert Hall. KGER-9, News. 9:05, Aubrey Lee. KMTR-9, Floyd Johnson. 9:45, Rhea Crawford.

10 TO 11 P. M.

KFI-10, News. 10:15 National Editor. 10:30 Herbie Kay Orch. KNX-10, Sophie Tucker. 10:15 Night cap Yarns. 10:30, Harry Owens Orch. 10:45 Clyde McCov Orch. KFVB-10, Hollywood Legion Boxing. KHJ-10, Phil Harris Orch. 10:30, Foolish Philosopher. 10:35, Chuck Foster's Orch. KECA-10, Phil-Harmonia. KEHE-10, Piano. 10:15, Clyde McCoy Orch. 10:30, Cubon Orch. KMPC-10, Mary's Melody Makers. 10:15, Wax Harmonies. 10:30, Joe Morengo Orch. 10:45, Mexican Rhythms. KRKD-10, All-Request program.

KGFJ-10, News. 10:15, Musical Comedy. 10:30, Dance Music. KFAC-10:15, Maurice Kosloff. 10:30, Organ. KFOX-10, Clyde McCoy's Orch. 10:30, Ross Ballroom. 10:45, Bob Hamilton's Orch. KGER-10, News. 10:15, Aubrey Lee. KMTR-10, Conga Orch.

11 P. M. TO 12 MIDNIGHT

KFI-11, Gary Nottingham's Orch. 11:30, Silhouettes. KNX-11, Pasadena Dance. 11:30, Archie Bleyer's Orch. 11:45, Black Chapel. KHJ-11, Shep Fields Orch. 11:15, Playboys. 11:30, Skinnay Ennis' Orch. 11:45, Jim Walsh's Orch. KFVB-11, Going Forward. 11:30, Symphony Hall. KECA-11, Wax Works. KEHE-11, Clifford Clinton. 11:15, News. 11:30, Andy Iona Orch. KMPC-11, Dancing Feet. 11:15 Nocturne Swing. 11:30, Let's Dance. KRKD-11, All-Request Program. KGFJ-11, News. 11:15, Seger Ellis Orch. 11:30 Rhythm. KFOX-11, Request Program. KFAC-11, Night Concert. KGER-11, News. 11:05, Music 11:15, Charlie Cook. 11:30, Turntable Tunes. 11:55, News.

12 MIDNIGHT

KNX-12, News. 12:15, Dance-time to 1 a. m. KHJ-12, Rhapsody in Wax. KFVB-12, News. 12:15, Phil Harris Orch. 12:45, Dance time. KRKD-12, Musicland Revue. KGFJ-12, Nite Owl to 6. KFAC-12, Mel LeMon to 6. KGER-12, Hour of Hospitality.

SATURDAY

Feb. 25, 1939

HOURLY-DAILY LOG

6 TO 7 A. M.

KMPC-6:45 Cheerful Rhythms KEHE-6, Musical Clock. KHJ-6, Rise and Shine. KFVB-6, Stu Wilson. KFVD-6, Spanish Program. KNX-6, Sunrise Salute. KRKD-6, Early Riser. 6:15, Rev. Johnston. 6:30, News. 6:45, Early Riser. KGFJ-6, Concert. KFOX-6, El Despertador. KFAC-6, Old Time Religion. 6:45, Melodic Gems. KGER-6, News. 6:05, Farm News. 6:25, Music. :30, Purple Mules.

7 TO 8 A. M.

KFI-7, Off the Records. 7:15, News. 7:30, Musical Newsy. 7:45, Radio Review. KMPC-7, Morning Express. 7:30, Cheerful Rhythms. KEHE-7, Musical Clock. KHJ-7, Rise and Shine. 7:45, News. KFVB-7, Stu Wilson. KFVD-7, Spanish Program. 7:15, Covered Wagon Jubilee. KNX-7, Sunrise Salute. 7:30, News. 7:45, Sunrise Salute. KRKD-7, Early Riser. 7:45, News. KGFJ-7, News. 7:15, Choral Serenade. 7:30, Sports. 7:45, Rhythm Classics. KFOX-7, El Despertador. 7:30 News. 7:40, Music. 7:45, Rev. Van Delinder. KFAC-7, Pastor Reynolds. 7:45, News. KGER-7, News. 7:15, Aubrey Lee. KECA-7, Three Romeos. 7:15, Amanda Snow. 7:30, Swing Serenade. 7:45, Child Grows Up.

8 TO 9 A. M.

KFI-8, Glen Hurlburt. 8:15, News Period. 8:30, Reserve. 8:45, Do You Remember? KNX-8, Cincinnati Conservatory of Music. KHJ-8, Collegiate Revue. 8:15, This Wonderful World. 8:30, U. S. Army Band. 8:45, Mirandy. KFVB-8, Melodies. 8:45, Day Dreams. KECA-8, Church Quarter Hour. 8:15, Music Internationale. 8:30, Our Barn. KEHE-8, News. 8:15, Early Edition. 8:30, Musical Mirrors. KMPC-8, Unity Daily Word. 8:15, News. 8:30, Vocal Reveries. KFVD-8, Covered Wagon Jubilee. 8:45, Dr. Reynolds. KGFJ-8, News. 8:15, Old Timers. 8:30, Hit Revue. KFOX-8, Mother and Dad. 8:30, Hit Tunes. 8:45, Ads. KFAC-8, Country Church of Hollywood. 8:30, Mirandy. 8:45, Golden Rule Club. KGER-8, News. 8:05, Music. 8:15, Mizpah Hour. 8:45, Charlie Cook. KMTR-8:45, Turf Bluebloods.

9 TO 10 A. M.

KFI-9, County Medical Talk. 9:15, Norman Cloutier's Orch. 9:30, Gypsy Trails. KNX-9, In the Music Room. 9:15, Melody Ramblings. 9:30, Enoch Light's Orch. KHJ-9, Morrey Breman's Orch. 9:15, School Admin. Conven. 9:30, Board of Education. 9:45, Walter Flandorf, organ. KFVB-9, Waltz Time. 9:30, Margaret Clark. 9:45, Musicale. KECA-9, American Education

Forum. 9:25, Organ. 9:30, National Farm & Home. KPHE-9, Tangos. 9:30 Swing-time. KMPC-9, Path of Beauty. 9:15 Melodies. 9:30, Echoes. 9:45, Rhythms in Beauty. KFVD-9, Covered Wagon Jubilee. 9:15, News. KRKD-9:30, Weather Forecast. KGFJ-9, News. 9:15, Russ Morrow Orch. 9:30, Footlite Favorites. KMTR-9, Martin Thomas. KFOX-9, Rhythms. 9:15, Musical Newsy. 9:30, Odds and Ends. 9:45, News. KFAC-9, Meditations. 9:30, Three-quarter Time. 9:45, Women in the News. KGER-9, News. 9:05, Allimin. 9:15, Full Gospel Assembly. 9:45, Music.

10 TO 11 A. M.

KFI-10, Radio Pen Friend. 10:15, Calling all Stamp Collectors. 10:30, Campus Notes. 10:55, Metropolitan Opera. KNX-10, Monitor Child. 10:15 Women's Club. 10:30, Moods for Moderns. KHJ-10, Mid-Morning Matinee. 10:30, Carnegie Symphony. KFVB-10, News. 10:15, Jamboree. KECA-10, National Farm and Home. 10:30, City Schools Harmonica Band. 10:45, Ray Kinney's Orch. KEHE-10, Shadows of the Past. 10:30, Reflections. 10:45, Junior Bird Club. KFVD-10, Song Gospel. 10:15, Records. 10:30, Live, Help Live. 10:45, Organ. KRKD-10, In My Solitude. 10:15, Sons of the Prairie.

10:45, Paddock Flashes. KMPC-10, Shopping News. 10:30, Dancing Feet. KGFJ-10, News. 10:15, Al Perry Orch. 1:0:30 Moods in Melody. KFOX-10, Word to Wives. 10:15, String Time! 10:30, Hollywood Legion Band. 10:45, House of MacGregor. KFAC-10, Mid-Morning Serenade. 10:45, Gothic Tower. KGER-10, News. 10:05, Music. 10:15, Charlie Cook. 10:30, Church of Deaf and Blind. 10:45, Organ. KMTR-10, Anthony Zeoli. 10:30, Turf Tales. 10:45, Stock Reports.

11 A. M. TO 12 NOON

KFI-11, Metropolitan Opera... KNX-11, Men Against Death. 11:30, Buffalo Presents. 11:45, Fran Hines, tenor. KHJ-11, D.A.R. 11:15, Anthony Candeloris Orch. 11:30, Inter-Collegiate Debates. KFVB-11, Jamboree. 11:45, Salvation Army. KECA-11, Joe Reichman's Och. 11:30, Del Courtney's Orch. KEHE-11, 52nd Street. 11:30, Airplane Trip. KMPC-11, Dr. Louis Talbot. 11:30, Varieties. KFVD-11, News. 11:15, Dr. Stricker. 11:30, Shop with Violet. KRKD-11:30, News. KGFJ-11, News. 11:15, Dr. Wiseman. 11:30, Eddie Fitzpatrick Orch. KFOX-11, Huntington Park. 11:30, News. 11:40, Music. KFAC-11, Man on the Street. 11:30, Medical Talk. 11:45, Strikes & Spares.

SATURDAY

Feb. 25, 1939

HOURLY-DAILY LOG

KGFR—11, News, 11:05, Melodies, 11:30, Cheerful Earful, 11:45, Stepladder.
KMTR—11, Monitor News, 11:15, Religion, 11:30, Saddle Pals.

12 NOON TO 1 P. M.

KFI—12, Metropolitan Opera.
KNX—12, Merry-makers, 12:30, Texas Rangers.
KFWB—12, Ben Sweetland, 12:15, News, 12:30, Swing Shots.

KHJ—12, News, 12:15, London Music Hall.

KECA—12, Rakov's Orch. 12:15 Four of Us, 12:30, Al Roth's Orch.

KEHE—12, News, 12:15, Symphony Hall.

KMPC—12, Ralph Hubbard, 12:15, News, 12:30, Hoosier Hotshots, 12:45, Tuneful Topics.

KFVD—12, Board of Education, 12:30, Maurice Johnson, 12:45, Bruce Johnson.

KRKC—12:15, Civic.
KGFJ—12, News, 12:15, This-That.

KFOX—12, Hal Kemp's Orch. 12:15, Island Music, 12:30 Man on Street, 12:45, Cam eos.

KFAC—12, News 12:30, Organ, 12:45, L. A. City College.
KGER—12, News, 12:10, Melodies, 12:30, Charlie Cook, 12:45, Music.

1 TO 2 P. M.

KFI—1, Metropolitan Opera.
KNX—1, Chas. Paul, 1:30, Dance-operators.

KHJ—1, Flamingo Stakes (Hialeah), 1:30, Gloomchasers.

KFWB—1, Children's Workshop, 1:30, Dance Session.

KECA—1, Club Matinee, 1:30, Classic Hour.

KEHE—1, Symphony Hall, 1:15, Parade, 1:30, Salvation Army, 1:45, Revue.

KMPC—1, Varieties, 1:30, Studio Concert 1:45, Music Moderne.

KFVD—1, News, 1:30, KRKC—1:45, News.

KGFJ—1, News, 1:15, Ben Selwyn Orch. 1:30, Freddie Rich Orch.

KFOX—1, Stars Over Hollywood, 1:15, Rainbow Trio, 1:30, Los Caballeros.

KFAC—1, Religious Science.
KGER—1, News, 1:05, George Strange, 1:30, Spanish Trio.

KMTR—1:30, Geo. Highley.

2 TO 3 P. M.

KFI—2, Rhythms, 2:15, Youth Meets Government, 2:30, Reserve.

KNX—2, What Price America, 2:30, Jack Marshard Orch.

KHJ—2, International House, 2:30, Drama of Youth.

KFWB—2, Dance Session.
KECA—2, Chamber of Music Concert, 2:30, Classic Hour.

KEHE—2, Jack Stanley Orch. 2:30, Modern Tempos.

KMPC—2, Swing Organ, 2:30, Studio Concert.

KRKC—2:15, Chuck Henry Orch.

KGFJ—2, News, 2:15, Civic, 2:30, Concert, 2:45, Jungle Jim.

KFOX—2, Christian Science, 2:15, Church Songs, 2:30, Foster Rucker.

KFAC—2:30, Band Concert.
KGER—2, News, 2:05, D. A. R. 2:15, Music, 2:30, Long Beach Band.

KMTR—2, Race Results, 2:45, Gustav Fredrick.

3 TO 4 P. M.

KFI—3, Kaltmeyer Kindergarten, 3:25, News, 3:30, Reserve, 3:45, Religion.
KNX—3, News, 3:05, Leighton Noble, 3:30, Sat. Night Swing
KHJ—3, Bob Crosby's Orch. 3:30, Manny Lander's Orch.

KFWB—3, Dance Session.
KECA—3, El Chico Revue, 3:25 News, 3:30, Renfrew of the Mounted.

KEHE—3, News, 3:15, Cock-tails, 3:30, Dansante.

KMPC—3, Singing Strings, 3:30 Popular Rhythms.

KFVD—3, News, 3:15, Mem-ories, 3:30, Hot Wax, 3:45, Favorites.

KFOX—3, At the Theater, 3:15 Treasure Chest, 3:30, Talk-ing Drums, 3:45, News.

KGFJ—3, News, 3:15, Eddie Eben, 3:30, Texas Outlaws.

KFAC—3, Musical Masterpiece.
KGER—3, News, 3:10, Music, 3:20, Long Beach Band.

KMTR—3, Race Results, 3:30, Memories, 3:45, Race Results.

4 TO 5 P. M.

KFI—4, Freddie Martin's Orch. 4:30, Lives of Great Men, 4:45, Castilla Twins.

KNX—4, Americans at Work, 4:30, Jimmie Davis' Orch.

KHJ—4, Bernie Cummin's Orch. 4:15, Raymond Gram's Swing, 4:30, Red Norvo's Orch. 4:45, American Legion News.

KFWB—4, Dance Session.
KECA—4, Message of Israel, 4:30, Rendezvous with Ricardo.

KEHE—4, Light Opera.
KMPC—4, Orchestra, 4:15, Norman Parade, 4:30, Melodies, 4:45, News.

KFVD—4, Favorites, 4:30, For You.

KRKC—4:15, News.
KGFJ—4, News, 4:15, Tea Time, 4:30, Swing Carnival.

KFOX—4, Matinee, 4:30, Dance Rhythms.

KFAC—4, Musical Comedy Favorites, 4:30, Pan-Pacific Aud. 4:45, Classics.

KGER—4, News, 4:10, Music, 4:15, Village Voice, 4:30, Miss Muffet, 4:45, School Kids.

5 TO 6 P. M.

KFI—5, Tommy Riggs' Quaker Party, 5:30, Carlos Molinos Orch.

KNX—5, Sports Broadside, 5:30 Ray Bradford's Orch. 5:45, Adventures in Science.

KHJ—5, Jazz Nocturne, 5:30, Symphonic Strings.

KFWB—5, Dance Session, 5:20, Music on the Air.

KECA—5, Music and American Youth, 5:30, Brent House.

KEHE—5, Stuart Hamblen's Game.

KRKC—5:15, Evelyn Jurs, 5:30, Race Results.

KFOX—5, Larry Clinton Orch. 5:15, Benny Goodman's Orch. 5:30, Tommy's Dorsey's Orch. 5:40, Beauty Talk, 5:45, Artie Shaw's Orch.

KGFJ—5, News, 5:15, Azvler Cugat Orch. 5:30, Roy Nugent, 5:45, Sunset Swing.

KFAC—5, Christian Science, 5:15, Paul Jordan Smith, 5:30 Kids of Big Top, 5:45, Princess Redhead.

KGER—5, News, 5:05, Lico Estrada.

6 TO 7 P. M.

KFI—6 Dinner Date with Judy, 6:30, Rhythm Fantasia, 6:45, King Cowboy.

KNX—6, Phil Baker, 6:30, Saturday Serenade.

KHJ—6, Hawaii Calls, 6:30, Hollywood Whispers, 6:45, Sons of the Pioneers.

KFWB—6, News, 6:15, B'Nai Brith, 6:30, Fred Skinner, 6:45, Marimba Magic.

KECA—6, Biltmore Trio, 6:15, March of Progress, 6:30, Hall of Fun.

KEHE—6, News, 6:15, Blue Room, 6:45, Pepperdine College.

KRKC—6:30, Santaella's Strings, 6:45, Father Vaughn.

KGFJ—6 News, 6:15, Concert, 6:30, Sports, 6:45, Barney Andrews.

KFOX—6, News, 6:10, Rolly Lloyd, 6:30, Dance Rhythms, 6:45, Serenaders.

KFAC—6, News, 6:15, Sports Flashes, 6:30, Musicale, 6:45, L. A. Bar Ass'n.

KGER—6, News, 6:15, Music, 6:30, Italian Journal.

KMTR—6, Saddle Pals, 6:30, Calif. Pension.

7 TO 8 P. M.

KFI—7, Sweeten Swing, 7:30, Reserve.

KNX—7, The Hit Parade, 7:45, Tonight's Best Buys.

KHJ—7, Betty Jane Rhodes with Chicco, 7:15, Inside of Sports, 7:30, Larry Clinton.

KFWB—7, Dick Connor, 7:15, Streamline Serenade, 7:30, Santa Anita Races.

KECA—7, NBC Symphony.
KEHE—7, Dinner Dance, 7:15, Strollin' Tom, 7:30, News, 7:45, Phil Harris Orch.

KRKC—7, News, 7:30, Do You Know?

KFSG—7:45, Aimee Semple McPherson.

KFOX—7, Concert, 7:15, Strollin' Tom, 7:30, Swing Ding.

KGFJ—7, Spanish Hour.
KFAC—7, Where Songs Are Born, 7:30, Dr. James Fifield.

KGER—7, News, 7:05, Music, 7:15, Charlie Cook, 7:30, Music, 7:45, Salvation Army.

KMTR—7, Deep South.

8 TO 9 P. M.

KFI—8, National Barn Dance.
KNX—8, Joe E. Brown, 8:30, Johnny Presents.

KHJ—8, Frost Warnings, Yar Concert, 8:15, Jimmy Dorsey's Orch. 8:45, Jimmy Grier's Orch.

KFWB—8, Dixieland Band, 8:15, Union Rescue Mission, 8:45, Waltz Time.

KECA—8, NBC Symphony, 8:30, George Crooks, 8:45, Lou Breese Orch.

KEHE—8, What's the Answer? 8:30, Carol Lofner Orch.

KFSG—8, Aimee Semple McPherson, 8:15, Negro News, 8:30, Nat Brandwynne Orch. 8:45, Italian Music.

KFOX—8, Hawaiians, 8:15, String Time, 8:30, Dance Rhythms.

KFAC—8, Opera.
KGER—8, News, 8:05, Rodolfo Hoyos.

9 TO 10 P. M.

KFI—9, Fred Waring, 9:30, Avalon Time.

KNX—9, Professor Quiz, 9:30, Bert Lytell, Dramatime, 9:45, Capitol Opinions.

KHJ—9, News, 9:15, Glen Grey's Orch. 9:30, Bob Crosby's Orch.

KFWB—9, Their Greatest Story, 9:30, News, 9:45, Moonlight Sonata.

KECA—9, Horace Heidt Orch. 9:30, Freddy Martin Orch.

KHEHE—9, Clyde McCoy's Orch. 9:30, Jack Stanley Orch.

KMPC—9:30, Mary's Melody Makers, 9:45, News.

KFSG—9, Aimee Semple McPherson, 9:30, Two Grand Pianists.

KGFJ—9, News, 9:15, Shopping Guide, 9:30, Russ Morrow Orch.

KFOX—9, Glendale Civic Aud. 9:30, News, 9:45, Redman's Orch.

KFAC—9, Opera.
KGER—9, News, 9:05, Aston Radio Group.

KMTR—9, Movie Comment, 9:15, Fishing Pals.

10 TO 11 P. M.

KFI—10, This Week in Review, 10:15, Carlos Molinos Orch. 10:30, Gary Nottingham's Orch.



Busiest Year
Six days out of each week you will hear Gabriel Heatter, host of 'We The People' who is now in his sixth and busiest year this year. He does commentaries aside from his regular weekly program.

KNX—10, To be announced, 10:15, Clyde McCoy's Orch. 10:30, Bob Sherwood Orch. 10:45, Maxine Sullivan.

KHJ—10, Phil Harris Orch. 10:30, Joe Reichman's Orch.
KFWB—10, Rhythms, 10:30, Going Forward.

KECA—10, Phil-Harmonia, 10:30, Cuban Orch. 10:30, Rhythm Airs, 10:45, Andy Iano Orch.

KMPC—10, Mary's Melody Makers, 10:15, Dance Time, 10:30, Joe Morengo Orch. 10:45, Wax Harmonies.

KFSG—10, Back Home.
KGFJ—10, News, 10:15, Musical Comedy, 10:30, Front Page, 10:45, Dance Music.

KFOX—10, Billy McDonald's Orch. 10:30, Coyle Chambers' Orch.
KFAC—10, L. A. City College.
KGER—10, News, 10:15, Open Door Church, 10:30, Jr. College Dance.

KECA—10, Phil-Harmonia.
KMTR—10, Conga Orch.

11 TO 12 MIDNIGHT

KFI—11, Herbie Kay Orch. 11:30, Archie Loveland Orch.

KNX—11, Pasadena Dance, 11:30, Archie Bleyer's Orch.
KHJ—11, Shep Fields Orch. 11:15, Skinnay Ennis Orch. 11:30, Jack McLean Orch. 11:45, Phil Harris Orch.

KFWB—11, Going Forward, 11:30, Symphony Hall.
KECA—11, Musical Encore.
KEHE—11, Phil Harris Orch. 11:15, News, 11:30, Andy Iano Orch.

KMPC—11, Dancing Feet, 11:15, Nocturne Swing, 11:30, Let's Dance.

KFSG—11, Texas Pals.
KGFJ—11, News, 11:15, Clyde McCoy Orch. 11:30, Rhythm.

KFOX—11, Bob Hamilton's Orch. 11:30, News, 11:45, Organ.
KFAC—11, Night Concert.
KMTR—11, Melody Lane.

12 MIDNIGHT

KMPC—12, Swing Club.
KFVD—12, Fun House to 4.
KRKC—12, Muscialand Revue.
KGFJ—12, Nite Owl to 6.

KFAC—12, Mel LeMon to 7:30.
KNX—12, Dancetime to 1 a. m.
KHJ—12, Rhapsody in Wax.

Airplane Zanies Sign For "Model" Show

Tom Howard and George Shelton, the zanies of the airplanes, take over the "Model Minstrel" program from that famous blackface comic team Pick and Pat, starting Feb. 27. The new jokesters were the two that did the pinch hitting for the Ebony team when Pick and Pat were on their recent vacation. The two blackfacers have had the program for the past five years. "Model Minstrel" show is heard each Monday night at 8:30 p. m. on KNX-CBS.

The team of Howard and Shelton is one of the oldest partnerships in the show business.

Bergen & McCarthy Plan Vacation

Edgar Bergen will take Charlie Mc Carthy on a winter vacation this year. The NBC star and his famous dummy plan to leave February 27 for New York, and they will broadcast their portion of the Chase and Sanborn Hour from Radio City March 5 and 12. Bergen (without McCarthy) plans to get his fill of Broadway plays during his vacation in New York.

Rubber Anniversary

The 100th anniversary of the discovery of the process of vulcanizing rubber will be saluted by Secretary of Commerce Harry L. Hopkins and leaders of allied industries in a special National Broadcasting company program on Thursday, Feb. 23. Program will air here on KECA for half hour at 6 p. m.

Discuss Public Debt—Future

One of the most discussed subjects in America today, "The Public Debt and the Future" will be the center of discussion by three members of the University of Chicago faculty during the broadcast of the U. of C. Round Table, over KFI-NBC, Sunday, Feb. 19, at 9:30 a. m.

Jan Peerce Solos

Jan Peerce, tenor, will be soloist with the Radio City Music Hall Symphony orchestra, conducted by Erno Rapee, during the Music Hall on the air program, heard Sunday, Feb. 19, at 9 a. m. on KFI-NBC.

Present Tolstoy's "Redemption"

Count Leo Tolstoy's great play, "Redemption" will be presented as the regular Sunday feature, Feb. 19, on KECA-NBC at 10 a. m. during the NBC Great Play program period.

Zasu Pitts With Fibber

Zazu Pitts returns to the Fibber Mc Gee airshow riding KFI-NBC on Tuesday evening at 6:30 p. m. The return of Miss Pitts will mark her third appearance on this broadcast.

RADIO NEWS WEEK SHORT WAVE GUIDE

Compiled by EARL DE HAVEN

Reception conditions—4 P. M. to 11 P. M., GOOD—12 Midnite to 7 A. M., FAIR.
7 A. M. to 4 P. M., FAIR.

SHORT WAVE "BEST BETS"—PACIFIC STANDARD TIME

DJN*	9.54 Mc.	Berlin, Germany	2:00 to 9:00 P. M.
XEBR*	11.82 Mc.	Hermosillo, Mexico	10 A. M. to 1 P. M. & 6 to 9 P. M.
ZRK	9.61 Mc.	Kilpheuvai, South Africa	8:45 to 9:45 P. M.
IRF	9.83 Mc.	Rome, Italy	3:30 to 6:00 P. M. Mon.-Wed.-Fri.
JZZ	11.80 Mc.	Tokyo, Japan	9:30 to 10:30 P. M.
JFO	9.62 Mc.	Taihoku, Taiwan	1:00 to 4:40 A. M.—News 1:55 A. M.
JVN	10.66 Mc.	Tokyo, Japan	1:00 to 7:00 A. M.—News 1:55 A. M.
TGWB	6.49 Mc.	Guatemala City, Guatemala	6:00 to 9:00 P. M.
TGWA	9.68 Mc.	Guatemala City, Guatemala	6:00 to 8:00 P. M.
YV5RC	5.97 Mc.	Caracas, Venezuela	5:00 to 7:00 P. M.
LRX	9.66 Mc.	Buenos Aires, Argentina	6:00 to 8:30 P. M.—Sat. to 9 P. M.
GSD	11.75 Mc.	London, (Davenport) England	3:20 to 5:30 P. M. 6:20 to 8:30 P. M.
TG-2	6.19 Mc.	Guatemala City, Guatemala	3:00 to 9:00 P. M. Mon.-Fri.-Sat.
GSC	9.58 Mc.	London, (Davenport) England	Same as GSD & 12 Midnite, 2 A. M.
DJB	15.20 Mc.	Berlin, Germany	2:00 to 9:00 P. M.
DJD	11.77 Mc.	Berlin, Germany	2:00 to 9:00 P. M.
VLR	9.58 Mc.	Melbourne, Australia	12:30 to 5:30 A. M.
VK3ME	9.51 Mc.	Melbourne, Australia	1:00 to 4:00 A. M.
YSD	7.89 Mc.	San Salvador, El Salvador	4:00 to 8:00 P. M.
THP	6.69 Mc.	San Jose, Costa Rica	4:00 to 8:00 P. M.
ZBW-3	9.52 Mc.	Hong Kong, China	1:00 to 7:00 A. M.
TPB-7	11.88 Mc.	Paris, France	6 to 8 P. M. & 10 P. M. to 2 A. M.

(NEWS IN ENGLISH from TPB-7 at 7:15 P. M. DAILY)

HP5B	11.79 Mc.	Panama City, Panama	6:00 to 8:00 P. M.
PLP	11.00 Mc.	Bandoeng, Java	1:00 to 7:00 A. M.
RV-15	4.27 Mc.	Khabarovsk, Siberia USSR	1:00 to 5:00 A. M.


All Schedules DAILY unless otherwise noted.

*The "Hit-of-the DIAL"—DJN Berlin, Germany
DJN Berlin, Germany—9:54 Mc.—"Hello everybody! This is Berlin calling through the German Short Wave station DJE." This cheery, familiar announcement is an invitation for listeners everywhere to join the huge audience that regularly tunes in on the splendid variety programs from Broadcasting House, Berlin. Many of the great Wagnerian operas are presented in their entirety; there are frequent concerts by bands of the German Army; great organ recitals present the classics of the masters; and programs of numbers requested by listeners who write in from every continent. Regular news broadcasts in many languages are a popular feature on all transmissions. A transcription of an old German folk song, "Ever Be True and Faithful" is played for 15 minutes before and after every transmission.

"The Finest FLOUR the world produces . . ."

That's one reason

WHY YOU'LL LIKE




New "Dairy Loaf" Bread

WHITE OR WHEAT, SLICED OR UNSLICED

All hard wheat flour used in Ralphts
Bread is made from Montana Wheat—
winner of 7

International Championships

There are many other reasons, too—so why not get all your
BREAD and ROLLS
from



Modernized Bakery

at

"Sells for less" prices

RADIO NEWS WEEK... ALPHABETICAL PROGRAM GUIDE

Adventures of Gen. S. Parker...KHJ	6:15 P.M.	Mon. to Fri.	Ford Sunday Evening Hour...KNX	6:00 P.M.	Sun.
Allen, Fred...KFI	9:00 P.M.	Wed.	Four-Thirty Chipper...KHJ	4:30 P.M.	Mon. to Fri.
Amer. Album of Familiar Music...KFI	6:30 P.M.	Sun.	Frank & Archie...KHJ	9:15 P.M.	Sun.-Mon.-Tues.
American Education Forum...KECA	9:00 A.M.	Sat.	Gang Busters...KNX	9:00 P.M.	Wed.
American School of the Air...KNX	11:30 A.M.	Mon. to Fri.	Gateway to Hollywood...KNX	3:30 P.M.	Sun.
American Viewpoints...KNX	7:45 P.M.	Tues.	Gill & Doemling...KNX	8:00 P.M.	Sat.
Americans All...KNX	11:00 A.M.	Sun.	Giltmore Circus...KFI	9:00 P.M.	Fri.
Americans at Work...KNX	7:30 P.M.	Thurs.	Girl Alone...KFI	1:45 P.M.	Mon. to Fri.
Amos 'N' Andy...KFI	8:00 P.M.	Mon. to Fri.	Goldbergs...KNX	10:00 A.M.	Mon. to Fri.
Andy and Virginia...KHJ	6:00 A.M.	Mon. to Sat.	Good Morning Tonight...KNX	9:30 P.M.	Fri.
Answer Gauge...KHJ	8:30 P.M.	Wed.	Good News of 1939...KFI	6:00 P.M.	Thurs.
Armstrong, Jack...KHJ	6:00 P.M.	Mon. to Fri.	Good Will Court...KHJ	7:00 P.M.	Sun.
Arnold, Gene—Minstrels...KECA	7:30 P.M.	Wed.	Goodman, Benny—Orchestra...KNX	6:30 P.M.	Tues.
Arnold Grimm's Daughter...KFI	11:15 A.M.	Mon. to Fri.	Grand Central Station...KNX	7:00 P.M.	Fri.
Around the World...KHJ	2:00 P.M.	Tues.	Green Hornet...KHJ	7:30 P.M.	Tues. & Thurs.
Ask It Basket...KNX	7:30 P.M.	Wed.	Grouch Club...KNX	9:30 P.M.	Tues.
Aunt Jennie's Real Life Stories...KNX	11:15 A.M.	Mon. to Fri.	Guiding Light...KFI	12:45 P.M.	Mon. to Fri.
Avalon Time...KFI	9:30 P.M.	Sat.	Haley, Jack...KNX	9:30 P.M.	Fri.
Back Home...KNX	2:30 P.M.	Sun.	Hall of Fun...KECA	6:30 P.M.	Sat.
Backstage Wife...KFI	1:00 P.M.	Mon. to Fri.	Haneschen, Gus—Orchestra...KFI	6:30 P.M.	Sun.
Baker, Art...KFI	4:30 P.M.	Mon. to Fri.	Harris, Nick...KECA	10:00 A.M.	Sun.
Baker, Kenny...KFI	8:30 P.M.	Sun.	Hatterfields...KHJ	1:45 P.M.	Mon. to Fri.
Baker, Phil...KNX	6:00 P.M.	Tue., Thurs., Sat.	Haven of Rest...KHJ	8:15 A.M.	Mon. to Fri.
Balster, Sam...KHJ	7:15 P.M.	Sun.	Hawthorne House...KFI	9:00 P.M.	Mon.
Barbirolli, John Symphony Orch...KNX	12 Noon	Mon.	Hayes, Sam...KNX	8:00 P.M.	Mon.
Battle of the Sexes...KFI	9:30 P.M.	Sun.	Headlines on Parade...KNX	5:45 P.M.	Mon.
Becker, Bob...KFI	10:45 P.M.	Sun.	Heart of Julia Blake...KNX	3:15 P.M.	Mon., Wed., Fri.
Benchley Show...KNX	7:00 P.M.	Sun.	Heatter, Gabriel...KNX	6:00 P.M.	Tues.
Benny, Jack...KFI	8:30 P.M.	Sun.	Heidt, Horace—Orchestra...KECA	8:30 P.M.	Wed.
Bergen, Edgar...KFI	5:00 P.M.	Sun.	Help Thy Neighbor...KHJ	2:30 P.M.	Sun.
Bernie, Ben...KNX	9:00 P.M.	Sun.	Her Honor, Nancy James...KNX	9:15 P.M.	Mon. to Fri.
Better Business Bureau...KNX	9:00 A.M.	Tues.	Hersholt, Jean...KNX	7:00 P.M.	Tues.
Better Business Bureau...KECA	4:15 P.M.	Thurs.	Hill, Edwin C...KFI	8:15 P.M.	Mon., Wed.
Better Business Bureau...KFI	4:15 P.M.	Fri.	Hilltop House...KNX	1:30 P.M.	Mon. to Fri.
Betty & Bob...KFI	11:00 A.M.	Mon. to Fri.	Hit Parade...KNX	7:00 P.M.	Sat.
Betty Lou...KFI	5:00 P.M.	Sat.	Hobby Lobby...KFI	5:30 P.M.	Wed.
Between the Bookends...KECA	12:45 P.M.	Mon. to Thurs.	Holdens...KFI	4:15 P.M.	Mon. and Fri.
Between the Lines...KECA	7:30 P.M.	Thurs.	Hollywood Playhouse...KFI	4:00 P.M.	Sun.
Big Sister...KNX	11:00 A.M.	Mon. to Fri.	Home Town...KHJ	9:15 A.M.	Mon. to Fri.
Black, Frank—Orchestra...KECA	11:00 A.M.	Sun.	Honolulu Bound...KNX	6:00 P.M.	Sat.
Boredom by Budd...KECA	6:00 P.M.	Mon.	Hope, Bob...KFI	7:00 P.M.	Tues.
Bowes, Major...KNX	6:00 P.M.	Thurs.	Hot Stove League...KFI	10:15 P.M.	Wed.
Bowes, Major...KNX	8:30 A.M.	Sun.	Hour of Charm...KFI	6:00 P.M.	Mon.
Boyer, Charles...KFI	4:00 P.M.	Sun.	Houseboat Hannah...KFI	2:00 P.M.	Mon. to Fri.
Boyer, Charles...KECA	6:00 P.M.	Sat.	Hymns of All Churches...KFI	11:45 A.M.	Mon., Tues., Thurs.
Brent House...KECA	5:30 P.M.	Sun.	I Want a Divorce...KNX	9:30 P.M.	Thurs.
Brice, Fanny...KFI	6:00 P.M.	Thurs.	Information Please...KFI	5:30 P.M.	Tues.
Bridge Club...KFI	9:30 A.M.	Mon. to Thurs.	Idea Mart...KFI	6:30 P.M.	Wed.
Brown, Joe E...KNX	8:00 P.M.	Sat.	Inglewood Park Concert...KFI	6:30 P.M.	Wed.
Brown & Berman...KNX	8:30 A.M.	Mon. to Fri.	Inlaws...KHJ	5:15 P.M.	Mon. to Fri.
Burdick, Hal—Night Editor...KFI	7:45 P.M.	Tues.	Inside of Sports...KHJ	7:15 P.M.	Tues., Thurs., Sat.
Burns & Allen...KNX	8:30 P.M.	Fri.	Inside Story...KNX	8:00 P.M.	Thurs.
Burns, Bob...KFI	7:00 P.M.	Thurs.	It's My Turn Now...KNX	8:00 A.M.	Tues. & Thurs.
Cabbages an dKings...KFI	7:45 P.M.	Tues. and Thurs.	Jamboree...KECA	5:30 P.M.	Fri.
Call to Youth...KFI	9:30 A.M.	Sat.	Jello Program...KFI	8:30 P.M.	Sun.
Calling All Cars...KNX	7:30 P.M.	Fri.	Johnny Presents...KNX	8:30 P.M.	Sat.
Camel Caravan...KNX	6:30 P.M.	Tues.	Johnny Presents...KFI	8:30 P.M.	Tues.
Camera Club...KNX	9:30 P.M.	Mon.	John's Other Wife...KFI	10:00 A.M.	Mon. to Fri.
Campbell Playhouse...KNX	6:00 P.M.	Fri.	Johnson Family...KHJ	2:15 P.M.	Mon. to Fri.
Cantor, Eddie...KNX	7:30 P.M.	Mon.	Johnstone, Jack...KFI	8:30 P.M.	Tues.
Carlay, Rachel...KFI	6:00 P.M.	Sun.	Jolson, Al...KNX	9:00 P.M.	Tues.
Carnegie Symphony...KHJ	10:30 A.M.	Sat.	Just Plain Bill...KFI	10:15 A.M.	Mon. to Fri.
Carnation Contented Program...KFI	7:00 P.M.	Mon.	Kate, Dr...KFI	10:45 A.M.	Mon. to Fri.
Carters of Elm Street...KFI	9:00 A.M.	Mon. to Fri.	Keen, Mr. Tracer of Lost Persons...KFI	4:15 P.M.	Tue., Thurs.
Casselberry, Dr. Wm...KFI	8:45 P.M.	Sun.	Kiddoodlers...KECA	9:15 A.M.	Mon. & Wed.
Catholic Hour...KECA	3:00 P.M.	Sun.	King Cole's Jesters...KECA	9:00 A.M.	Mon.
Cavalcade of America...KNX	9:00 P.M.	Mon.	Kitty Keene...KNX	2:45 P.M.	Mon. to Fri.
Chaparral Club...KECA	4:15 P.M.	Mon.	Kostelanetz, Andre...KNX	7:00 P.M.	Thurs.
Chase & Sanborn Program...KFI	5:00 P.M.	Sun.	Know Your Child...KECA	11:30 A.M.	Mon. and Fri.
Cheerio...KECA	7:30 P.M.	Sun.	Kraft Music Hall...KFI	7:00 P.M.	Thurs.
Chicago Round Table...KFI	9:30 A.M.	Sun.	Kyser's Musical College...KFI	7:00 P.M.	Wed.
Christian, Dr...KNX	7:00 P.M.	Tues.	Lady Esther Serenade...KFI	7:00 P.M.	Fri.
Church of the Air...KNX	10:00 A.M.	Sun.	Lampighter...KHJ	9:30 A.M.	Sun.
Circle Program...KFI	7:00 P.M.	Sun.	Lane, Virginia...KECA	8:15 A.M.	Mon. to Fri.
Classic Hour...KECA	1:45 P.M.	Mon. to Fri.	Law in Everyday Life...KECA	8:45 P.M.	Mon.
Club Matinee...KECA	1:00 P.M.	Mon. to Thurs.	Lennox, Elizabeth...KFI	6:30 P.M.	Sun.
Court of Human Relations...KFI	1:30 P.M.	Sun.	Lewis, Fulton, Jr...KHJ	4:00 P.M.	Mon. to Fri.
Criminal Case Histories...KFI	5:00 P.M.	Wed. & Fri.	Life Can Be Beautiful...KNX	10:45 A.M.	Mon. to Fri.
Crocker, Betty...KFI	11:45 A.M.	Thurs.	Listen, Ladies...KEHE	9:00 P.M.	Mon.
Crosby, Bing...KFI	7:00 P.M.	Thurs.	Little Orphan Annie...KHJ	5:45 P.M.	Mon. to Fri.
Crumit, Frank...KFI	9:30 A.M.	Mon.	Lombardo, Guy...KNX	7:00 P.M.	Mon.
Dangerous Roads...KFI	10:30 A.M.	Mon. to Fri.	Lone Ranger...KHJ	7:30 P.M.	Mon., Wed., Fri.
David Harum...KFI	8:45 A.M.	Mon. to Fri.	Lullaby Lady...KFI	7:00 P.M.	Mon.
Death Valley Days...KFI	8:30 P.M.	Fri.	Lum and Abner...KNX	8:15 P.M.	Mon., Wed., Fri.
De Mille, Cecil...KNX	6:00 P.M.	Mon.	Lux Radio Theater...KNX	6:00 P.M.	Mon.
Devil's Scrapbook...KHJ	10:00 P.M.	Mon.	McBride, Mary Margaret...KNX	9:00 A.M.	Mon., Wed., Fri.
Don't You Believe It...KHJ	8:15 P.M.	Tues. & Thurs.	McCarthy, Charlie...KFI	5:00 P.M.	Sun.
Dorsey, Tommy—Orchestra...KFI	8:30 P.M.	Wed.	Ma Perkins...KFI	12:15 P.M.	Mon. to Fri.
Drama Time With Bert Lytell...KNX	9:30 P.M.	Thurs. and Sat.	Ma Perkins...KNX	3:00 P.M.	Mon. to Fri.
Duchin, Eddie...KFI	6:30 P.M.	Mon.	Magic Key of RCA...KECA	11:00 A.M.	Sun.
Easy Aces...KFI	4:00 P.M.	Tues., Wed., Thur.	Magnin, Rabbi...KHJ	2:30 P.M.	Sun.
Famous Actor's Guild...KNX	4:30 P.M.	Tues.	Man From Cook's...KFI	2:30 P.M.	Sun.
Famous Jury Trials...KHJ	7:00 P.M.	Wed.	Manhattan Merry Go Round...KFI	6:00 P.M.	Sun.
Father and Son...KECA	3:45 P.M.	Mon., Wed., Fri.	March of Time...KFI	6:30 P.M.	Fri.
Feminine Fancies...KHJ	3:00 P.M.	Mon. to Fri.	Marines Tell It To You...KHJ	8:00 P.M.	Mon.
Fibber McGee & Molly...KFI	6:30 P.M.	Tues.	Mary Marlin...KFI	12:00 Noon	Mon. to Fri.
Fidler, Jimmy...KNX	7:30 P.M.	Fri.	Maxwell House Hour...KFI	6:00 P.M.	Thurs.
Fidler, Jimmy...KFI	7:45 P.M.	Fri.	Meade, Martha...KFI	9:00 A.M.	Thurs.
Flo Rito, Ted...KNX	9:30 P.M.	Fri.	Melton, James...KHJ	8:45 P.M.	Thurs.
First Americans...KECA	1:45 P.M.	Mon.			
First Nighter...KNX	9:00 P.M.	Fri.			
Fitch Bandwagon...KFI	4:30 P.M.	Sun.			

"Missing Persons" Show in Second Year

The "Radio Bureau of Missing Persons" heard at a new time, 7:30 p. m. Sunday on KFWB, is now moving into its second year on the radio under the direction of Robert Dillon. He has the endorsement of civic and fraternal organizations throughout the southwest for his radio program. Aside from this, city, county and state police departments of the country offer him cooperation in the show. He has solved 269 cases out of the 499 presented on the air. He will speak before the Long Beach Women's Club on March 17, telling of the workings of his broadcast.

News On The Air

Table listing radio programs and stations. Columns include time, station call letters, and program details. Includes programs like KRKD Daily Ex. Sun, KFGR Daily Ex. Sun, KFI Mon. thru Fri, etc.

ALPHABETICAL PROGRAM GUIDE (Cont.)

Table listing programs alphabetically by station. Includes programs like Men Against Death, Mencken, Helen, Merry-makers, Metropolitan Opera Auditions, etc.

Table listing programs alphabetically by program name. Includes programs like Singing Strings, Smile Parade, Smith, Kate, Snooks, Baby, Sons of the Pioneers, etc.

GOOD HOUSEKEEPING DEMANDS ITS USE!

SANI-CLOR

A FINE BLEACH

SAVE TWO WAYS WITH SANI-CLOR

SAVE:

Save dainty hands in washing and cleaning! Sani-Clor whitens clothes, kitchen enamelware and wooden utensils; removes stains, mildew and scorch. Made of purest ingredients, SANI-CLOR is SAFE for white linens and cotton goods.



SAVE:

Save 20% of your washing and cleaning cost with SANI-CLOR! Return the empty Sani-Clor bottle to your grocer and you get the following refund—

- 1^c** on quarts
- 2^c** on half gallons

NOW ON SALE AT ALL

ESTABLISHED 1873
Ralphs
 GROCERY COMPANY
 SELLS FOR LESS